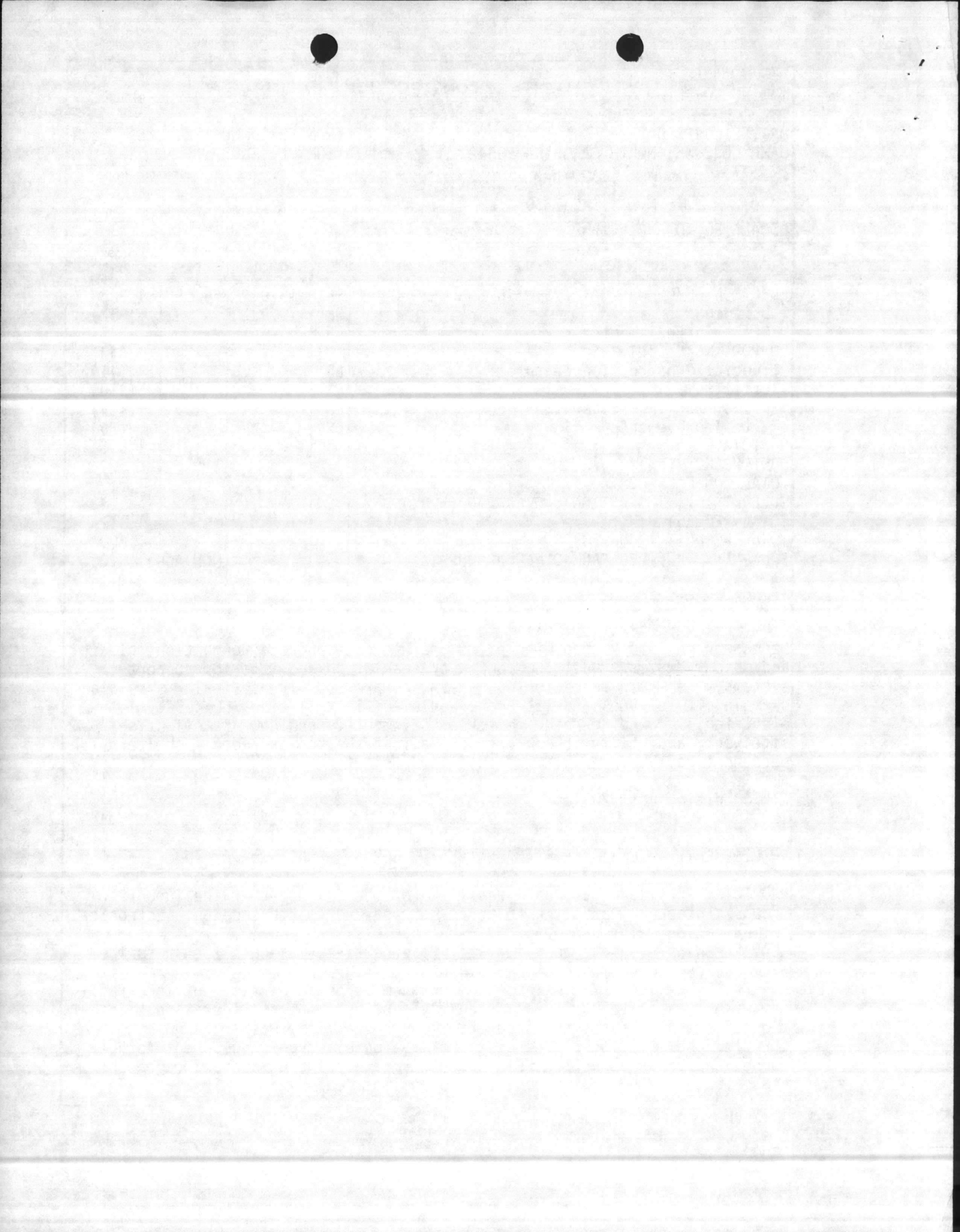
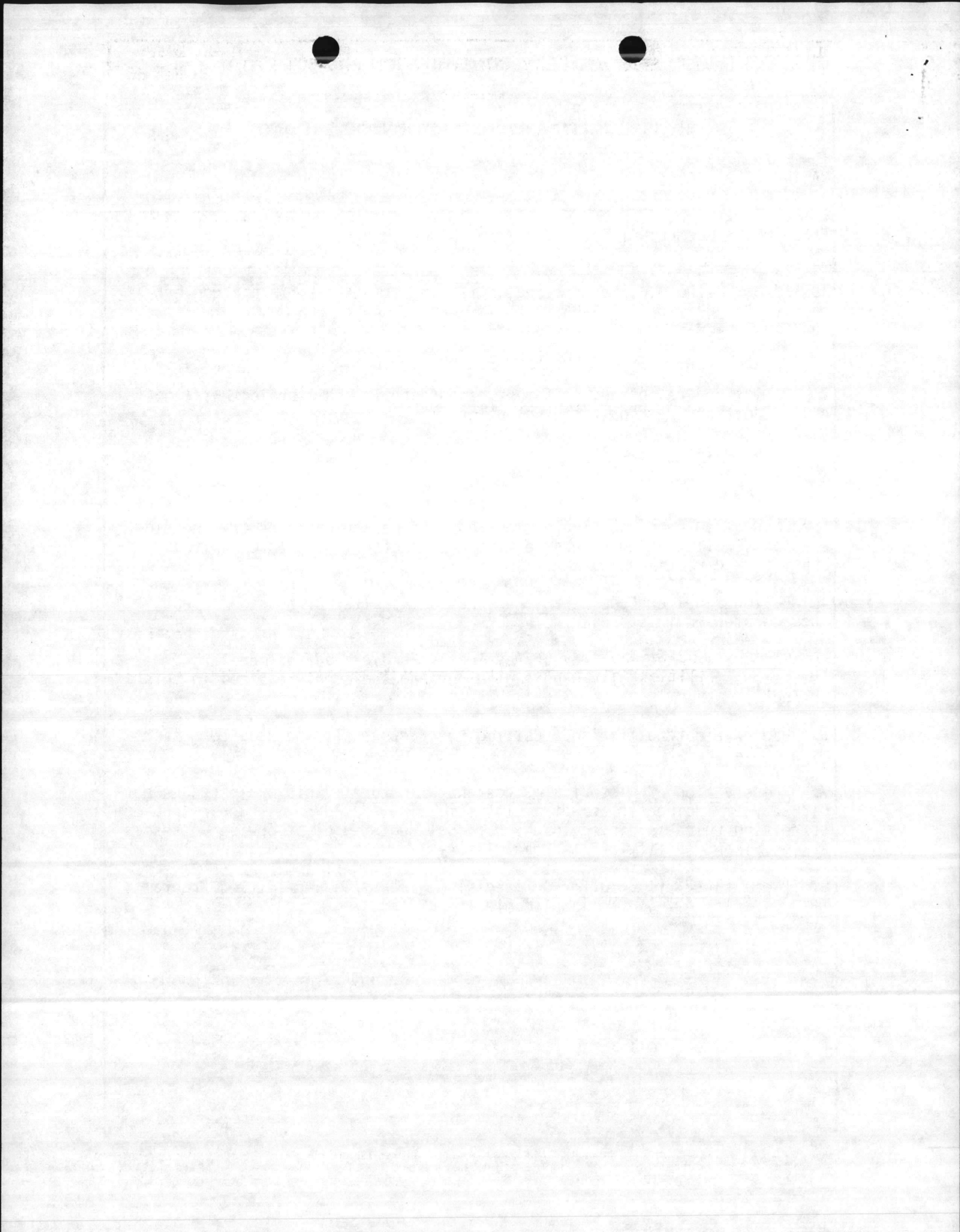


| | | | | | | |
|---|--|--|----------------------------|--|----------------------------------|--|
| 1. COMPONENT MARINE CORPS | | FY 19 ⁸⁹ MILITARY CONSTRUCTION PROJECT DATA | | | 2. DATE 20 Feb 86 | |
| 3. INSTALLATION AND LOCATION MARINE CORPS BASE CAMP LEJEUNE, NORTH CAROLINA 28542 | | | | 4. PROJECT TITLE ELECTRONICS/COMMUNICATIONS MAINTENANCE SHOP | | |
| 5. PROGRAM ELEMENT | | 6. CATEGORY CODE 217-30 | 7. PROJECT NUMBER P-679 | | 8. PROJECT COST (\$000) 1,800 | |
| ESCALATED TO APRIL 1989 | | | | 9. COST ESTIMATES | | |
| ITEM | | U/M | QUANTITY | UNIT COST | COST (\$000) | |
| ELECTRONICS/COMMUNICATIONS MAINTENANCE SHOP | | SF | 19,912 | 66.56 | 1,325 | |
| Building | | SF | 19,912 | | (982) | |
| Built-in Equipment | | LS | - | | (343) | |
| SUPPORTING FACILITIES | | | | | 311 | |
| Special Construction Features | | LS | - | | (41) | |
| Utilities | | LS | - | | (110) | |
| Roads, Parking, Sidewalks | | LS | - | | (134) | |
| Site Improvements | | LS | - | | (26) | |
| SUBTOTAL | | | | | <u>1,636</u> | |
| CONTINGENCY (5%) | | | | | 82 | |
| TOTAL CONTRACT COST | | | | | <u>1,718</u> | |
| SUPERVISION, INSPECTION & OVERHEAD (5.5%) | | | | | 94 | |
| TOTAL REQUEST | | | | | <u>1,812</u> | |
| TOTAL REQUEST (ROUNDED) | | | | | 1,800 | |
| EQUIPMENT PROVIDED FROM OTHER APPROPRIATIONS | | | | | (NON-ADD) (0) | |
| 10. DESCRIPTION OF PROPOSED CONSTRUCTION | | | | | | |
| <p>Permanent one-story shop with piles, reinforced concrete foundation, floors, and masonry walls. Built-up roof over insulation and interior support systems, i.e.: air conditioning, steam, compressed air, sprinkler fire alarm, plumbing, telephones and telephone equipment installation, 60/400 cycle electrical; grounding, etc., exterior pavements, fencing, area lighting, site work, and utilities connected. Fallout shelter excluded - shelters for personnel have been programmed in other projects.</p> <p>Air conditioning: 20 Tons</p> | | | | | | |
| <p>REQUIREMENTS: <u>26,312 SF</u> *ADEQUATE: <u>13,662 SF</u> <u>SUBSTANDARD: 0 SF</u></p> <p>PROJECT: Provide an adequate facility for the 2d Force Service Support Group Maintenance Battalion to perform third and fourth echelon electronic/communication maintenance.</p> <p>REQUIREMENT: A maintenance facility to effectively execute the prescribed Electronics and Communications Maintenance Program.</p> <p>CURRENT SITUATION: The maintenance program is being carried out in a facility with inadequate utilities, security, and building configuration. Location of existing facility is contrary to the Facility Master Plan.</p> <p>IMPACT IF NOT PROVIDED: The deadline time on electronic equipment for personnel and vehicles will remain adversely affected and maintenance capability and combat readiness will continue to be impaired.</p> | | | | | | |



| | | |
|---|--|----------------------|
| 1. COMPONENT MARINE CORPS | FY 19 ⁸⁹ MILITARY CONSTRUCTION PROJECT DATA | 2. DATE 20 Feb 86 |
| 3. INSTALLATION AND LOCATION MARINE CORPS BASE, CAMP LEJEUNE, NORTH CAROLINA 28542 | | |
| 4. PROJECT TITLE ELECTRONICS/COMMUNICATIONS FIELD MAINTENANCE SHOP | 5. PROJECT NUMBER P-679 | |
| *Building FC-100 will be utilized until completion of P-679 and convert back to Category Code 214-51. | | |
| <u>SPECIAL CONSIDERATIONS</u> | | |
| 1. <u>Pollution Prevention, Abatement, and Control:</u> This project will not cause additional air or water pollution. | | |
| 2. <u>Flood Hazard Evaluation:</u> Requirements of Executive Order No. 11296 (Flood Hazards) are not applicable. | | |
| 3. <u>Environmental Impact:</u> The project Environmental Impact Assessment has been made, reviewed, and where required, the design concepts give consideration to eliminating adverse environmental effects consistent with applicable directives. | | |
| 4. <u>Fallout Shelter Considerations:</u> Fallout shelter protection is not incorporated in this project. | | |
| 5. <u>Design for Accessibility of Physically Handicapped Personnel:</u> Provisions for physically handicapped personnel are not required in this project. | | |
| 6. <u>Use of Air Conditioning:</u> Ceiling "U" factors will be made to conform with DOD 4270.1-M. | | |
| 7. <u>Preservation of Historical Sites and Structures:</u> This project does not directly or indirectly affect a district, site, building, structure, object, or setting which is listed in the National Register or otherwise possesses a significant quality of American history. | | |
| 8. <u>"New Start" Criteria for Commercial or Industrial Activities Program (OMB Circular A-76):</u> Not applicable. | | |



1. COMPONENT
MARINE CORPS

FY 1986 MILITARY CONSTRUCTION PROJECT DATA

2. DATE
20 Feb 86

3. INSTALLATION AND LOCATION
MARINE CORPS BASE, CAMP LEJEUNE, NORTH CAROLINA 28542

4. PROJECT TITLE
ELEC/COMM FIELD MAINTENANCE SHOP

5. PROJECT NUMBER
P-679

FACILITY STUDY

1. Project: Provide 19,912 SF of Electronics/Communications Maintenance Shop to perform third and fourth echelon elec/comm maintenance.

2. Current and Planned Future Workload with Regard to this Project: The duration of need is indefinite and the facility will be utilized 100 percent of the time. An average of ten hours per day for a five-day work-week is spent in the shop. After training exercises or deployments, the maintenance workload increases; consequently, many nights and weekends are required to perform the additional maintenance. The organization is responsible for performing third and fourth echelon maintenance on all items of electronics and communications equipment authorized by the T/E. The future workload is difficult to project; however, it is expected to increase as the present equipment becomes older and new items are introduced into the system.

3. Description of Proposed Construction:

a. Type of Construction:

(1) Permanent one-story maintenance shop on pilings, reinforced concrete foundations, floors, masonry walls, built-up roofs, insulation, interior utilities, air conditioning in training and administrative areas, 60/400 cycle power with AC/DC power bus duct.

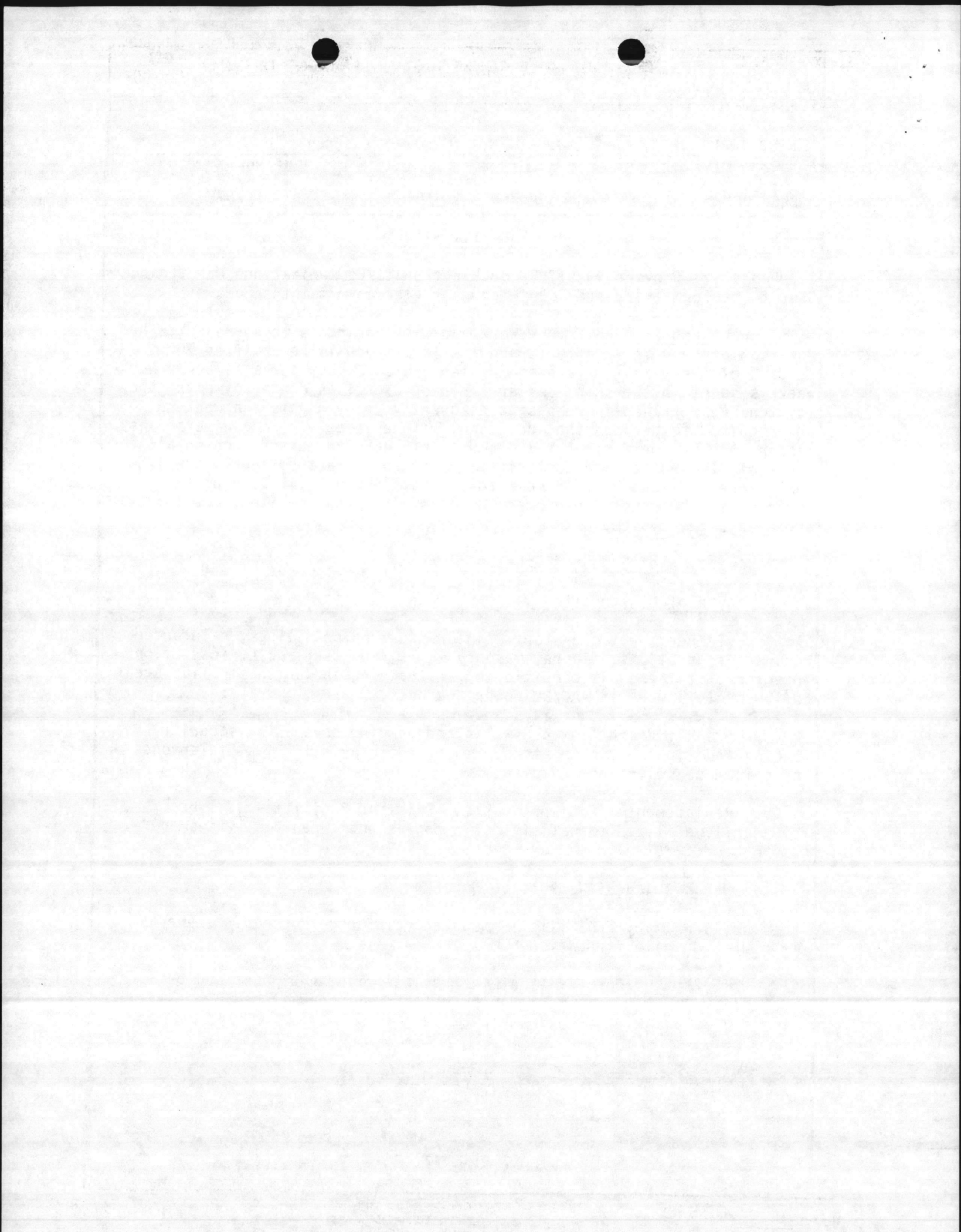
(2) Rigid and flexible walks and parking pavements, security fencing and lighting, site improvements, exterior utilities, telephones and telephone switching equipment.

b. Replacement: Not applicable. Existing facilities will be temporarily utilized to satisfy deficiencies until new facilities are constructed.

c. Description of Work to be Done:

(1) Primary Facilities: Modular reinforced concrete/masonry structures on pile foundation.

(2) Energy Conservation: Energy efficient equipment and building orientation for maximum energy conservation will be utilized.



1. COMPONENT

MARINE CORPS

FY-1989

MILITARY CONSTRUCTION PROJECT DATA

2. DATE

20 Feb 86

3. INSTALLATION AND LOCATION

MARINE CORPS BASE, CAMP LEJEUNE, NORTH CAROLINA 28542

4. PROJECT TITLE

ELEC/COMM FIELD MAINTENANCE SHOP

5. PROJECT NUMBER

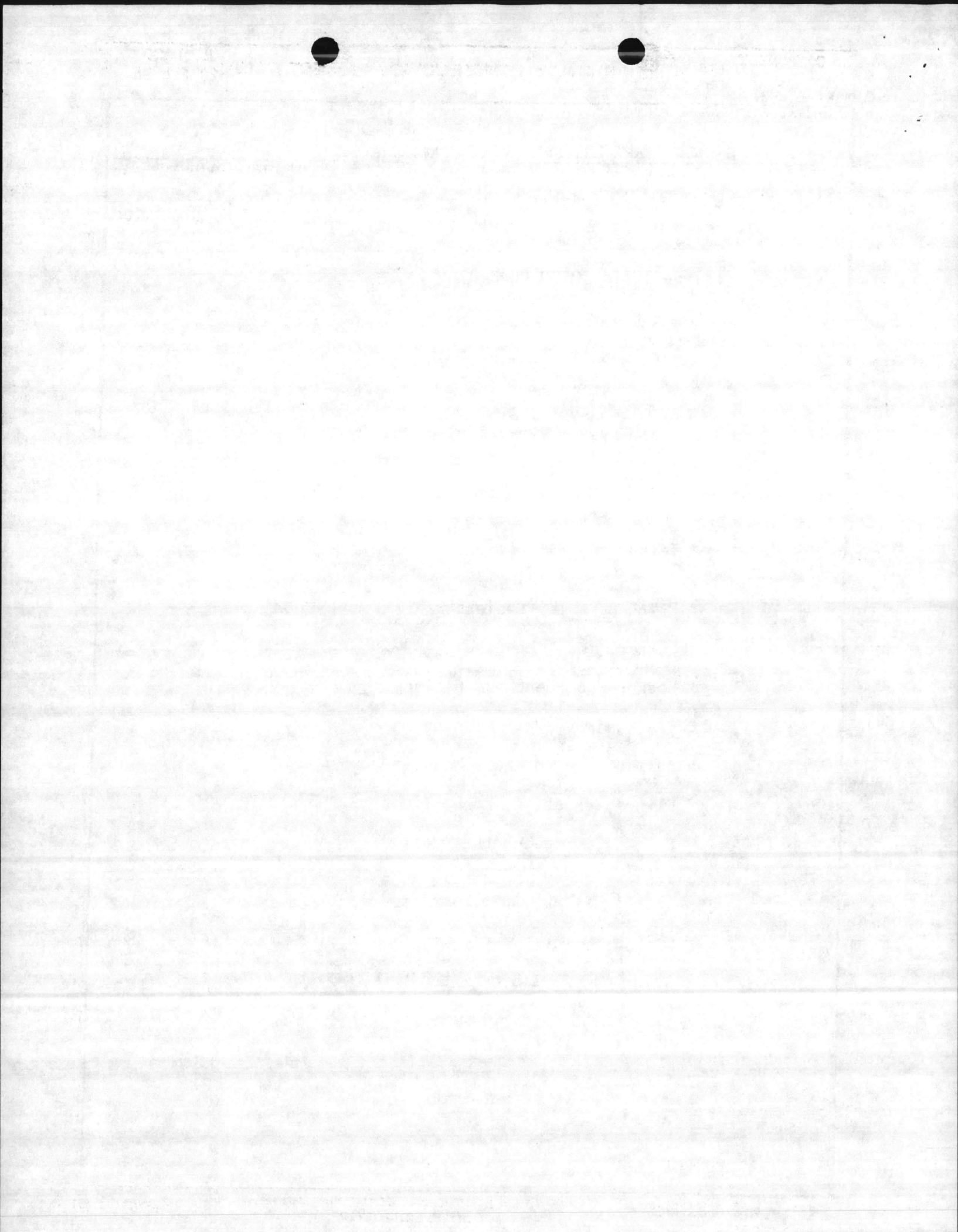
P- 679

(3) Collateral Equipment:

(a) Built-in (MCON Funded):

Description

- * Air Conditioning, Heating & Ventilating Systems
- * Plumbing System & Steam System (Interior)
- * Compressed Air System
- * Sprinkler System
- * Telephone, Fire Alarm & Intercom Systems
- * Drinking Water Coolers
- * Lockers, Wall Mounted
- * Locker-room benches, 6' long
- * Chalkboards, Wall Mounted
- * Bulletin Board, Wall Mounted
- * Blinds, Venetian, Light Tight
- * Counter, Dispatchers-
- * Exhaust System, overhead fractional HP, 208V, 3 phase
- * Deluge Shower, w/eye wash CW
- * Acid Resistant Sink w/bench CW
- * Exhaust Hood (over) w/fractional HP, 120V, 1 phase fan
- * Grounding System, Electronic



| | | |
|---|--|----------------------------|
| 1. COMPONENT MARINE CORPS | FY 1987 MILITARY CONSTRUCTION PROJECT DATA | 2. DATE 20 Feb 86 |
| 3. INSTALLATION AND LOCATION MARINE CORPS BASE, CAMP LEJEUNE, NORTH CAROLINA 28542 | | |
| 4. PROJECT TITLE ELEC/COMM FIELD MAINTENANCE SHOP | | 5. PROJECT NUMBER P-679 |

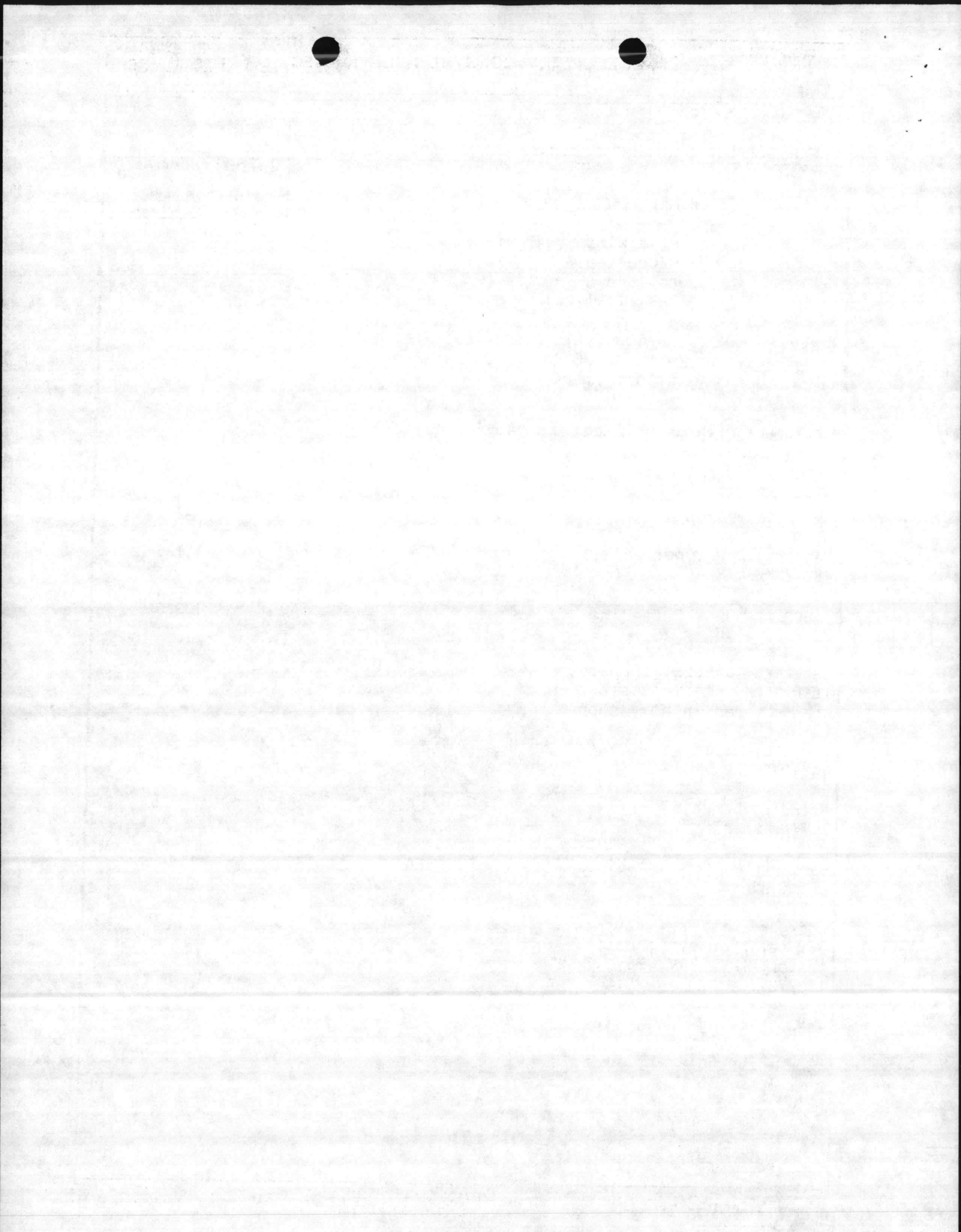
*Pass Window, 4' wide,
w/counter & "B" label
roll down shutter (w/
fusible link)

*60/400 Cycle Electrical System
with AC/DC Power Bus Bar and
transformers

*Equipment with associated installation cost.

(b) Expense Items:

| <u>Description</u> | <u>Qty</u> | <u>Unit of Issue</u> | <u>Unit Price</u> | <u>Total Cost</u> |
|--|------------|----------------------|-------------------|-------------------|
| Benches, work, portable, 48"x28"x34"H | 5 | EA | \$225 | 1,125 |
| Benches, work, portable, 72"x28"x34"H | 4 | EA | 340 | 1,360 |
| Benches, work, stationary, 28"Dx34"H, stl top, std, lead covered in btry shop | 2 | EA | 375 | 750 |
| Parts Bins, adj shelving 14"x24"D | 4 | EA | 75 | 300 |
| Grinder, bench, 7" w/ buffer wheel | 1 | EA | 385 | 385 |
| Parts Rota Bins, 3' dia. multi-bin | 4 | EA | 360 | 1,440 |
| Charger, battery, 12V, 24V, 36V selenium type; battery tester, 12V, 24V, 36V, 2.2KW, 110/220V | 2 | EA | 550 | 1,100 |
| 14"W shelving w/adj stds | 4 | EA | 120 | 480 |
| 12"W shelving w/adj stds, 6 shelves, 36"W & 84"H | 4 | EA | 90 | 360 |
| Desk, flat top, dbl ped, 60"x30", walnut pattern top, no overhang | 1 | EA | 315 | 315 |



1. COMPONENT
MARINE CORPS

FY 1989 MILITARY CONSTRUCTION PROJECT DATA

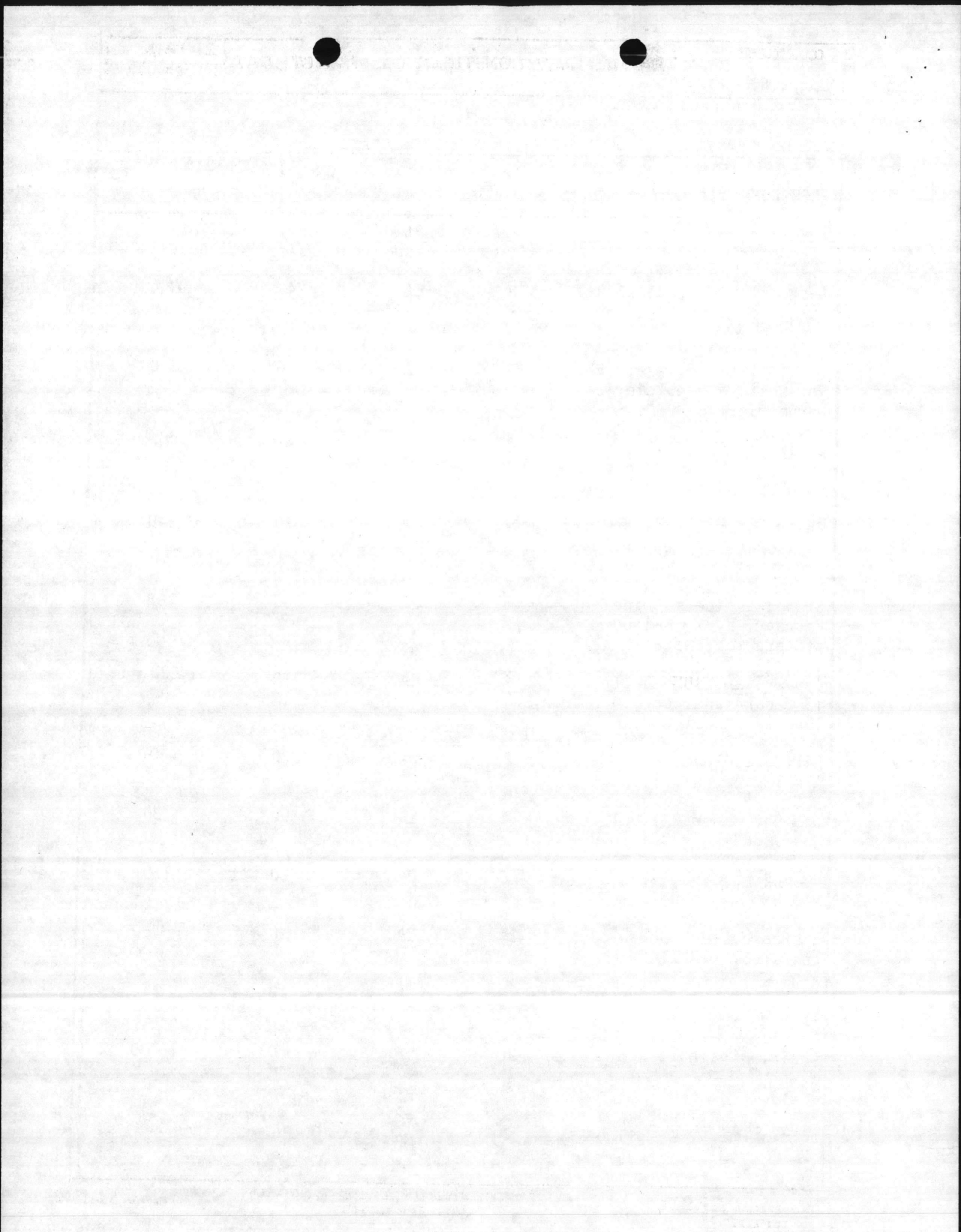
2. DATE
20 Feb 86

3. INSTALLATION AND LOCATION
MARINE CORPS BASE, CAMP LEJEUNE, NORTH CAROLINA 28542

4. PROJECT TITLE
ELEC/COMM FIELD MAINTENANCE SHOP

5. PROJECT NUMBER
P-579

| Description | Qty | Unit of Issue | Unit Price | Total Cost |
|--|-----|---------------|------------|------------|
| Desk, flat top, 45"x30" walnut pattern top, no overhang | 3 | EA | 240 | 720 |
| Desk, flat top, w/attach for sec'l & gen. clerical purposes | 2 | EA | 275 | 550 |
| Chair, rotary, tilting seat & back, adj. seat height, w/arms, w/casters | 4 | EA | 94 | 376 |
| Chair, secretarial, rotary adj. seat height, w/arms, w/casters | 2 | EA | 70 | 140 |
| Stand, office machine 2 drop leaves, walnut pattern top, w/casters | 3 | EA | 66 | 198 |
| Typewriter, IBM electric 13½" carriage, carbon ribbon, 10 pitch Model 833 | 2 | EA | 710 | 1,420 |
| Filing Cabinet, 5 drawers, legal size, w/o lock | 2 | EA | 220 | 440 |
| Cabinet, storage, dbl door, 36"x18"x80-1/16"H | 4 | EA | 190 | 760 |
| Bookcase, base, 33"x13"x10"H | 6 | EA | 20 | 120 |
| Bookcase, section, w/o doors, 31"x12"x14"H | 24 | EA | 40 | 960 |
| Bookcase, top, 33"x13"x2½"H | 6 | EA | 20 | 120 |
| Chair, straight, w/o arms | 20 | EA | 70 | 1,400 |
| Costumer, wearing apparel, contemporary, 4 dbl hooks, round pole w/rd base | 6 | EA | 35 | 210 |



1. COMPONENT **MILITARY CONSTRUCTION PROJECT DATA** 2. DATE
 MARINE CORPS FY-1989 20 Feb 86

3. INSTALLATION AND LOCATION

MARINE CORPS BASE, CAMP LEJEUNE, NORTH CAROLINA 28542

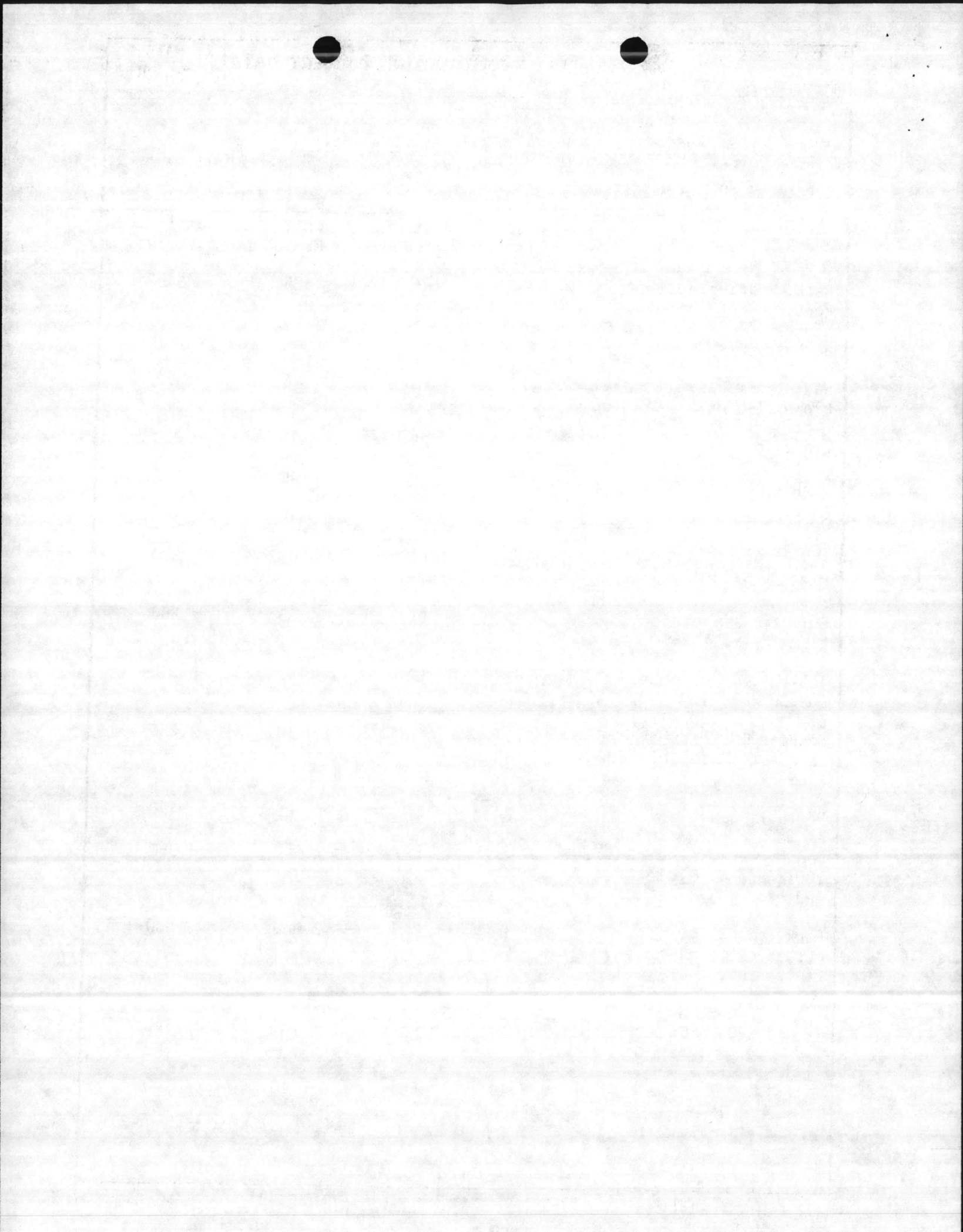
4. PROJECT TITLE

ELEC/COMM FIELD MAINTENANCE SHOP

5. PROJECT NUMBER

P-679

| Description | Qty | Unit of Issue | Unit Price | Total Cost |
|---|-----|---------------|------------|------------|
| Rack, wearing apparel contemporary, 6 metal hangers, 78"Hx30"Lx20"D at base | 4 | EA | 85 | 340 |
| Wastepaper Basket, dark brown, 14½"Hx13" dia top | 12 | EA | 6 | 72 |
| Draperies | 3 | PR | 74 | 222 |
| Draperies, blackout | 3 | PR | 95 | 285 |
| Desk Lamp | 6 | EA | 45 | 270 |
| Adding Machine, Monroe Model 1405 | 2 | EA | 290 | 580 |
| Bulletin Board, cork, alum frame, 4'x6' | 4 | EA | 65 | 260 |
| Table, gen. purpose, 60"x30"x29½"H | 3 | EA | 105 | 315 |
| Student Chairs, Heywood Wakefield Model HC-7730-PABS-PP | 18 | EA | 70 | 1,260 |
| Portable Easel | 2 | EA | 85 | 170 |
| Bench, work, electronic, 120/220V, 60 cycle & 400 cyc., 28V | 3 | EA | 1,450 | 4,350 |
| Rack, security, for mechanics' tool boxes, 24 openings | 1 | EA | 2,000 | 2,000 |
| Extinguisher, fire, 15 lb., CO ₂ | 4 | EA | 85 | 340 |
| Extinguisher, fire, 2½ gal. H ₂ O | 4 | EA | 40 | 160 |
| TOTAL EXPENSE ITEMS | | | | 25,653 |



1. COMPONENT

MILITARY CONSTRUCTION PROJECT DATA

2. DATE

MARINE CORPS FY-1989

20 Feb 86

3. INSTALLATION AND LOCATION

MARINE CORPS BASE, CAMP LEJEUNE, NORTH CAROLINA 28542

4. PROJECT TITLE

ELEC/COMM FIELD MAINTENANCE SHOP

5. PROJECT NUMBER

P- 679

(3) COLLATERAL EQUIPMENT (continued)

TOTAL EXPENSE ITEMS: 25,653

(c) Investment Items: None.

(d) APA Equipment: None.

(e) Training Equipment:

| <u>Description</u> | <u>Qty</u> | <u>Unit of Issue</u> | <u>Unit Price</u> | <u>Total Cost</u> |
|----------------------|------------|----------------------|-------------------|-------------------|
| Movie Projector | 1 | EA | 650 | 650 |
| Movie Screen | 1 | EA | 235 | 235 |
| Overhead Projector | 1 | EA | 375 | 375 |
| TOTAL TRAINING ITEMS | | | | \$ 1,260 |

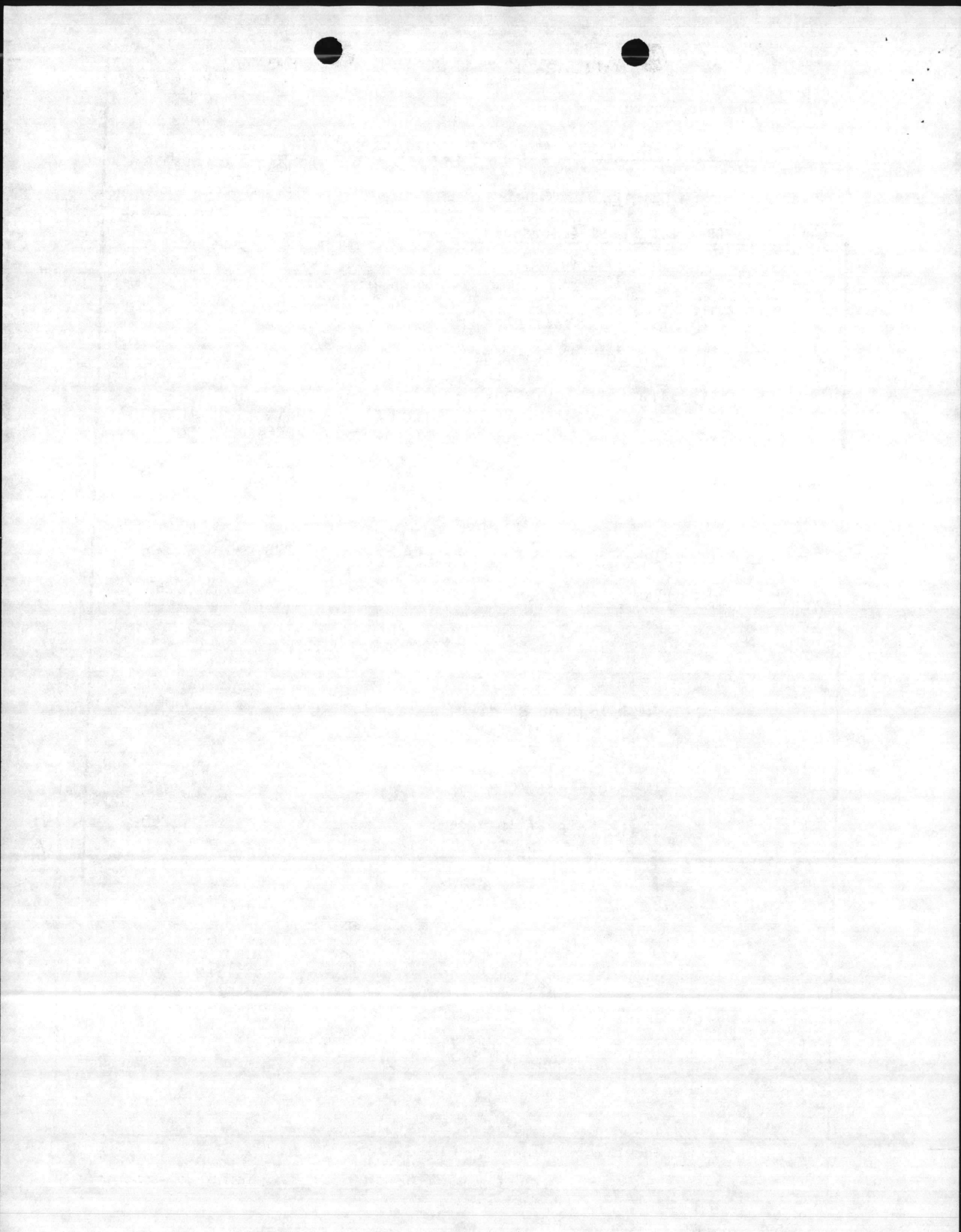
(f) Equipment on Hand: None.

(g) Summary:

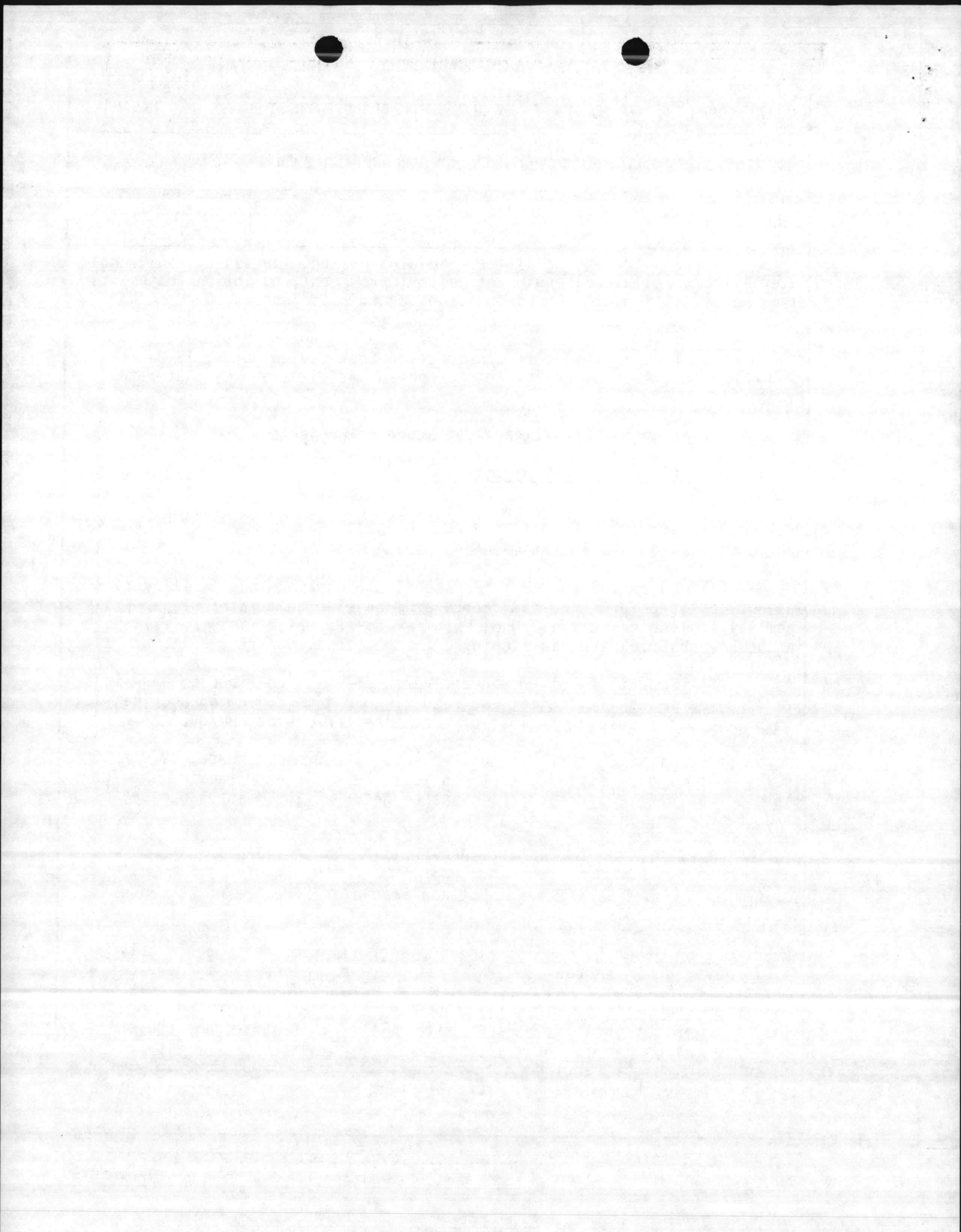
Expense Cost (O&MMC) 25,653

Training Cost (O&MMC) 1,260

TOTAL 26,913



| | | |
|---|--|----------------------|
| 1. COMPONENT MARINE CORPS | FY 19 89 MILITARY CONSTRUCTION PROJECT DATA | 2. DATE 20 Feb 86 |
| 3. INSTALLATION AND LOCATION MARINE CORPS BASE, CAMP LEJEUNE, NORTH CAROLINA 28542 | | |
| 4. PROJECT TITLE ELEC/COMM FIELD MAINTENANCE SHOP | 5. PROJECT NUMBER P-579 | |
| <p>(4) <u>Supporting Facilities:</u> Special piling, foundation, solar hot water system, collateral equipment, site improvement, pollution abatement, etc. No demolition will be accomplished on this project.</p> <p>4. <u>Cost Estimate:</u> Area cost factor for Camp Lejeune, NC is 0.86. Cost data derived from the Military Construction Cost Review Guide, FY-84 (DOD 4270.1-CG) to provide for this proposed facility, and escalated to FY-89.</p> <p>5. <u>Justification for Project and for Scope of Project:</u></p> <p>a. <u>Justification for Project:</u></p> <p>(1) <u>Project:</u> Proposed facilities are required to provide a Maintenance Battalion adequate and secure facilities to perform electronic and communications equipment maintenance.</p> <p>(2) <u>Current Situation:</u> Personnel are working in a facility that was not designed for third and fourth echelon elec/comm maintenance. This facility is located in the Hadnot Point area. Proposed facility will be in the French Creek area in keeping with the Facility Master Plan.</p> <p>(3) <u>Impact if Not Provided:</u> Personnel will continue to work in substandard and makeshift facilities, resulting in time consuming and inefficient operations resulting in loss of work time and wasted energy.</p> <p>b. <u>Justification for Scope of Project:</u> The project scope, 19,912 SF, is the minimum size facility that can meet the deficiency requirement for the electronic/communications maintenance needs of the Maintenance Battalion of 2d FSSG. See Item 13.</p> <p>6. <u>Equipment Provided from Other Appropriations:</u> Not applicable.</p> <p>7. <u>Common Support Facilities:</u> Not applicable. There are no common support facilities available in the French Creek area.</p> <p>8. <u>Effect on Other Resources:</u> The project will require approximately \$6,876 per year in increased O&MMC funds for increased utility services and operations. No additional personnel will be required to operate this facility. The project will enhance and improve the morale of personnel presently working in widely dispersed facilities. Proposed construction should be responsive to the challenges presented by the energy situation and comply with the requirements of Executive Order 12003 of 20 July 1977 and implemented by NAVFACINST 4100.5A.</p> | | |



1. COMPONENT
MARINE CORPS

FY 1989 MILITARY CONSTRUCTION PROJECT DATA

2. DATE
20 Feb 86

3. INSTALLATION AND LOCATION

MARINE CORPS BASE, CAMP LEJEUNE, NORTH CAROLINA 28542

4. PROJECT TITLE

ELEC/COMM FIELD MAINTENANCE SHOP

5. PROJECT NUMBER

P-679

Utility Requirements

- a. Electricity:
- | | |
|-------------|----------------|
| Consumption | 67,830 KWHR/yr |
| Peak Demand | 42 KW |
| Avg Demand | 36 KW |
- b. Steam:
- | | |
|-------------|------------------|
| Consumption | 3,042,432 LBS/yr |
| Demand | 1,092 LBS/hr |
- c. Coal: 118 Tons/yr
- d. Adequate utility requirements are available.

9. Siting of the Project: This facility will be located in the French Creek area, in keeping with the Camp Lejeune Master Plan. See enclosure (1).

10. Other Graphic Presentations, including Photographs: None.

11. Economic Analysis: This facility is being constructed on an undeveloped site adjacent to a developed area. Economic savings will be in nominal energy consumption savings to be realized from efficient operations. This is a military operational project in support of an operational mission located in this area.

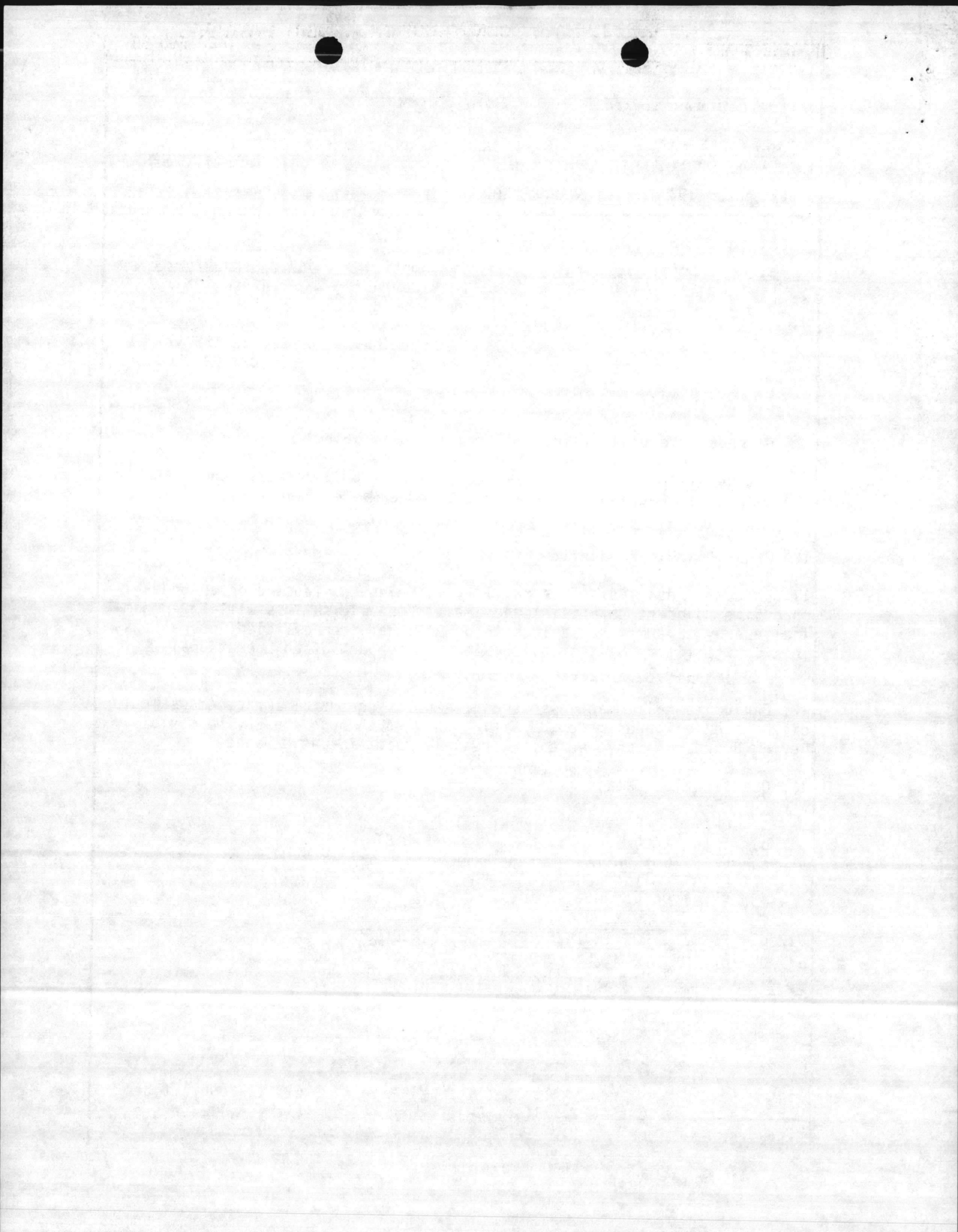
12. Environmental Impact Assessment: An Environmental Impact Assessment of the area has been made and will be routed through the Environmental Review Board. No adverse environmental impact is anticipated.

13. Quantitative Data:

- a. UNIT OF MEASURE: "SQUARE FEET"
b. TOTAL REQUIREMENT: 26,312 SQUARE FEET
c. EXISTING SUBSTANDARD: 0 SQUARE FEET
d. EXISTING INADEQUATE: 0 SQUARE FEET
* e. EXISTING ADEQUATE: 13,662 SQUARE FEET
f. OTHER ASSETS, NOT IN INVENTORY: 0 SQUARE FEET
g. FUNDED, NOT IN INVENTORY: 0 SQUARE FEET
* h. ADEQUATE ASSETS: (e + f + g) 13,662 SQUARE FEET
i. DEFICIENCY: (b - h) 12,650 SQUARE FEET

TOTAL REQUIREMENT = 26,312 SQUARE FEET
ADEQUATE ASSETS = 13,662 SQUARE FEET
TOTAL DEFICIENCY = 12,650 SQUARE FEET

*Bldg FC-100 will be utilized until completion of P-679 and convert back to Category Code 214-51. Bldg FC-100 currently utilizes 8,712 Square Feet.



3. INSTALLATION AND LOCATION
MARINE CORPS BASE, CAMP LEJEUNE, NORTH CAROLINA 28542

4. PROJECT TITLE | 5. PROJECT NUMBER
ELEC/COMM FIELD MAINTENANCE SHOP | P-679

14. Maintenance Facilities: Planning factors have been identified in terms of quantitative workloads that have been supported by the level of utilization. This facility has certain specifications in order to satisfy the space requirements and functional capabilities to effectively store and maintain the equipment involved. The NAVFAC definitive drawing given in P-272, Part IV is NAVFAC Dwg. # 1293356, Field Maintenance Shop, Service Battalion.

15. Morale, Welfare and Recreation Facilities: Not Applicable

16. Relocation Facilities: Not Applicable.

17. Storage Facilities: Not Applicable.

18. Hazards Identification, Assessment and Analysis:

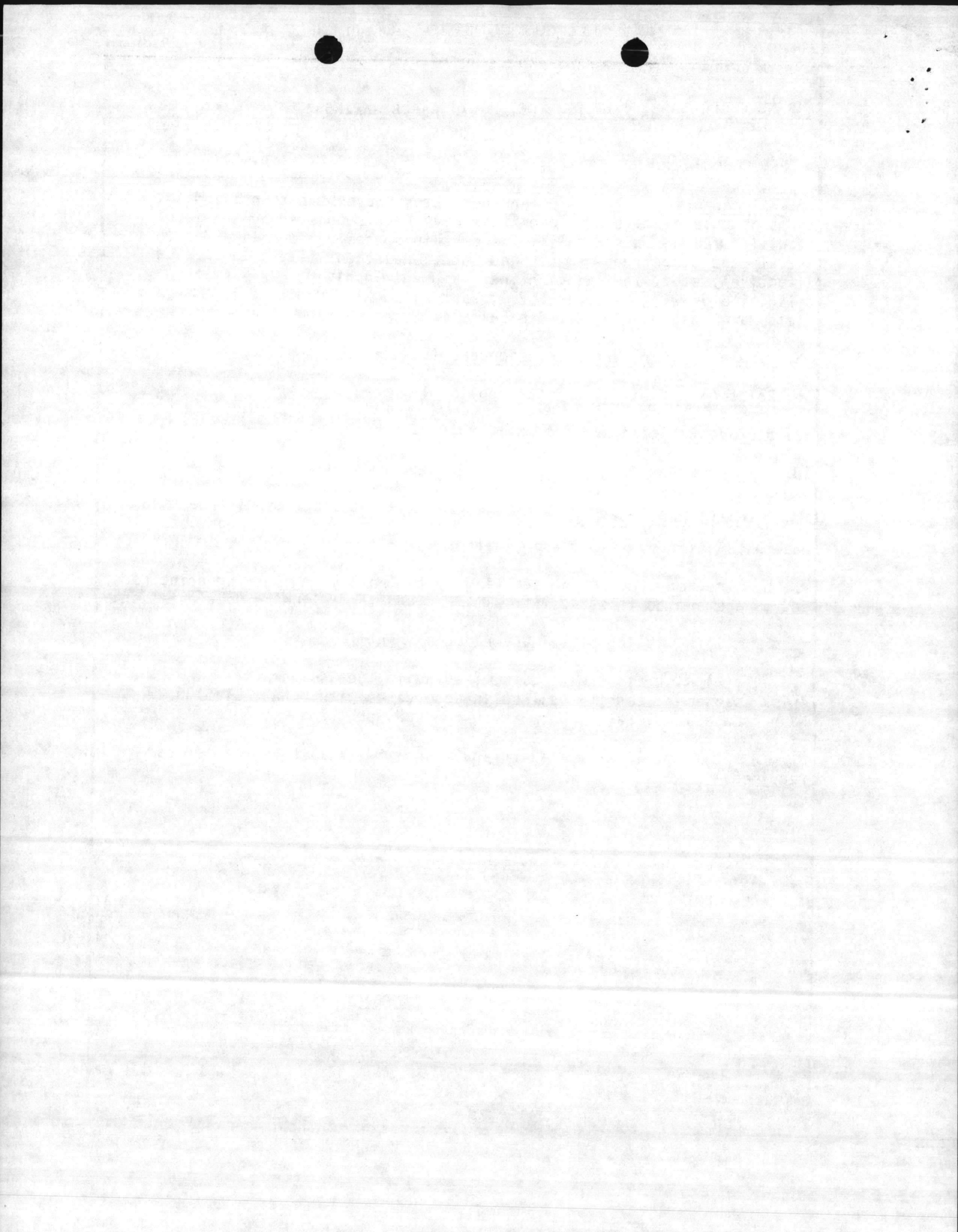
a. System safety engineering and management programs will be used to ensure that the highest possible degree of safety and occupational health is designed into these facilities.

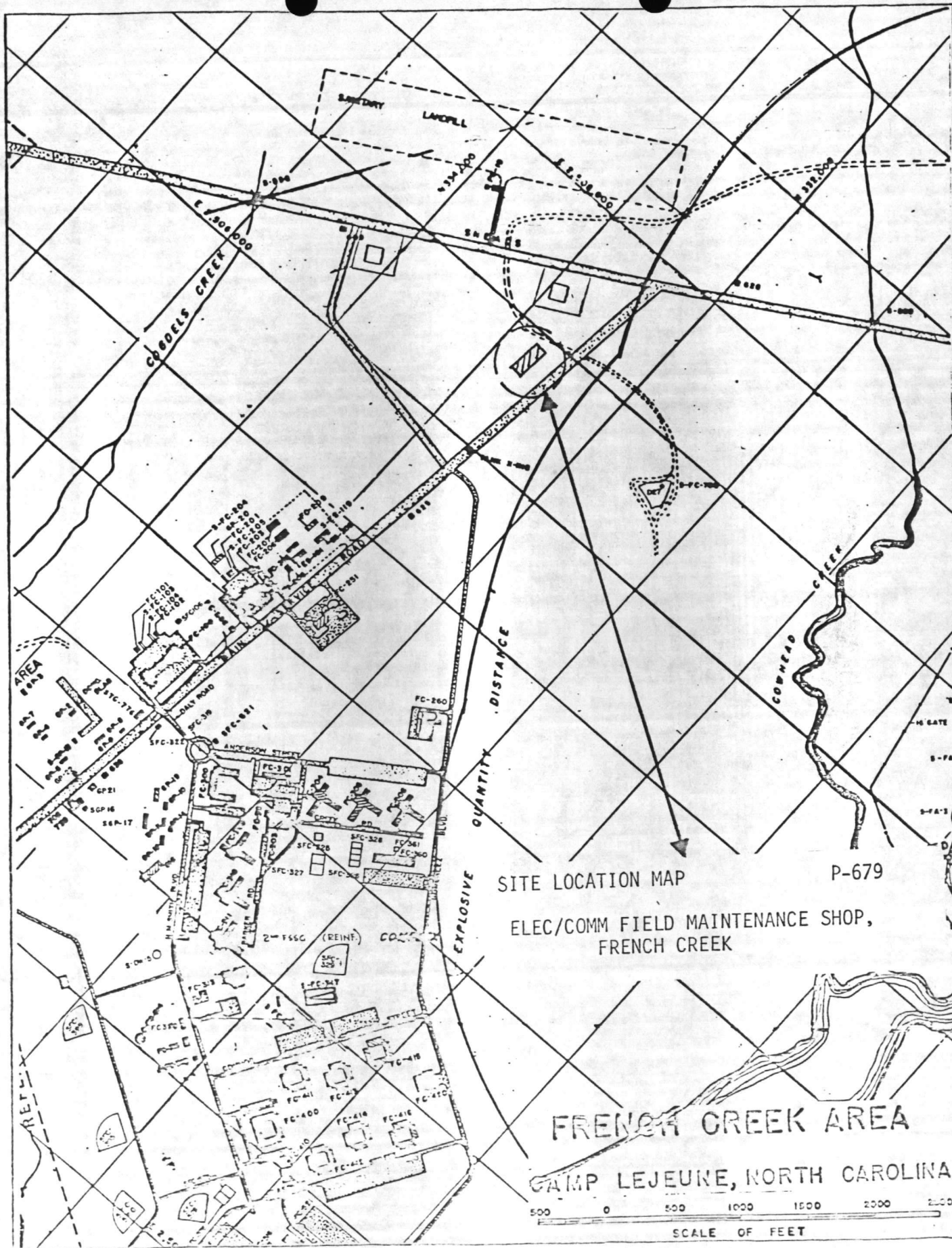
b. The requirement for applying system safety engineering principles and management to this facility will include the following documentation:

(1) A listing of primary hazards identified.

(2) Risk assessment data, leading to the assignment of a "risk assessment code," shall be in accordance with OPNAVINST 5100.23, Navy Occupational Safety and Health (NAVOSH) program.

(3) A preliminary hazard analysis (PHA) will be submitted as required.





SITE LOCATION MAP

P-679

ELEC/COMM FIELD MAINTENANCE SHOP,
FRENCH CREEK

FRENCH CREEK AREA

CAMP LEJEUNE, NORTH CAROLINA

