

GENERAL ELECTRIC

3101 B2571K229

CONT ON SH

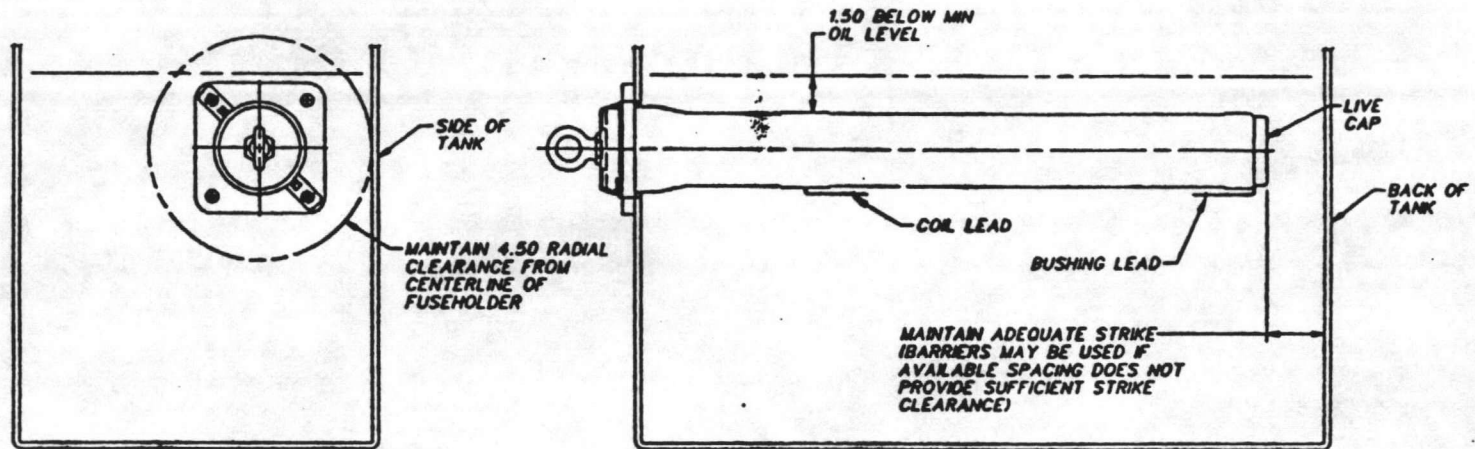
SH 2

UNLESS OTHERWISE SPECIFIED USE THE FOLLOWING			
SURFACES	TOLERANCES ON DIMENSIONS		
	2 PL DEC	3 PL DEC	ANGLES
✓	Ø	Ø	Ø DEG

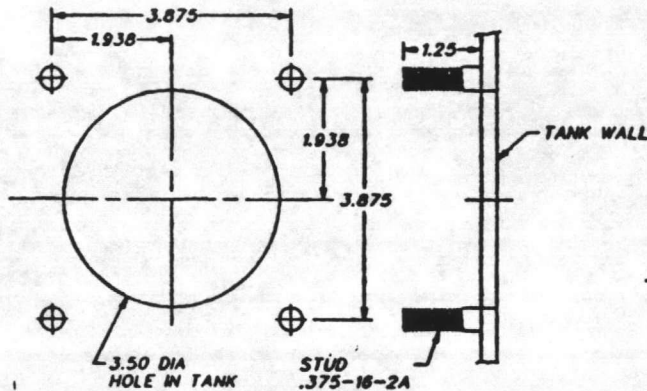
TITLE

OUTLINE - DRY WELL FUSEHOLDER

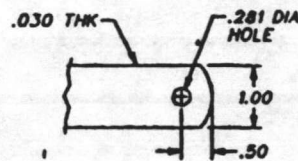
FIRST MADE FOR TBD - CPO (NON-LOADBREAK) (METAL FLANGE)



GENERAL FUSEHOLDER APPLICATION



FUSEHOLDER MOUNTING DIMENSIONS



DETAIL OF TERMINAL

MOUNTING FUSEHOLDER IN POCKET

1. POCKETS UP TO 1.50 IN DEPTH CAN BE USED WITHOUT ADVERSELY AFFECTING IMPULSE WITHSTAND.
2. IF APPLICATION REQUIRES POCKET DEPTH IN EXCESS OF 1.50, CARE SHOULD BE TAKEN TO AVOID ADVERSELY AFFECTING IMPULSE WITHSTAND.

REVISIONS 0 JUL 26, 1987 1 G. DAVIS MAR 09, 1988 RETRACED	MADE BY G. DAVIS JUL 08, 1987	APPROVALS	HICKORY TBD - CPO	3101 B2571K229	CONT ON SH	SH 2
	DESIGNED BY J. BELCHER MAR 11, 1988					

W3

W5

GEC-2

PRINTS TO

P041

