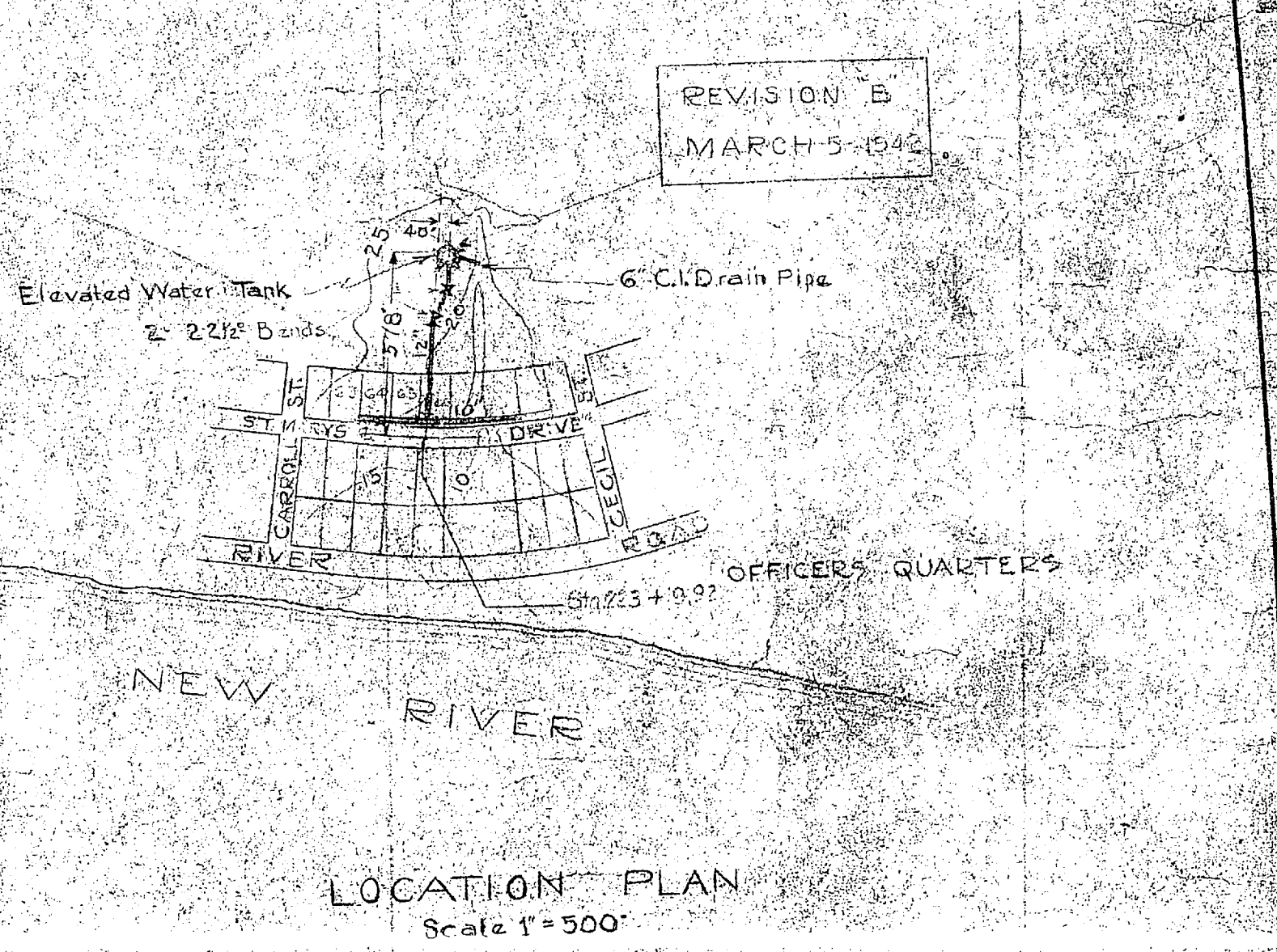
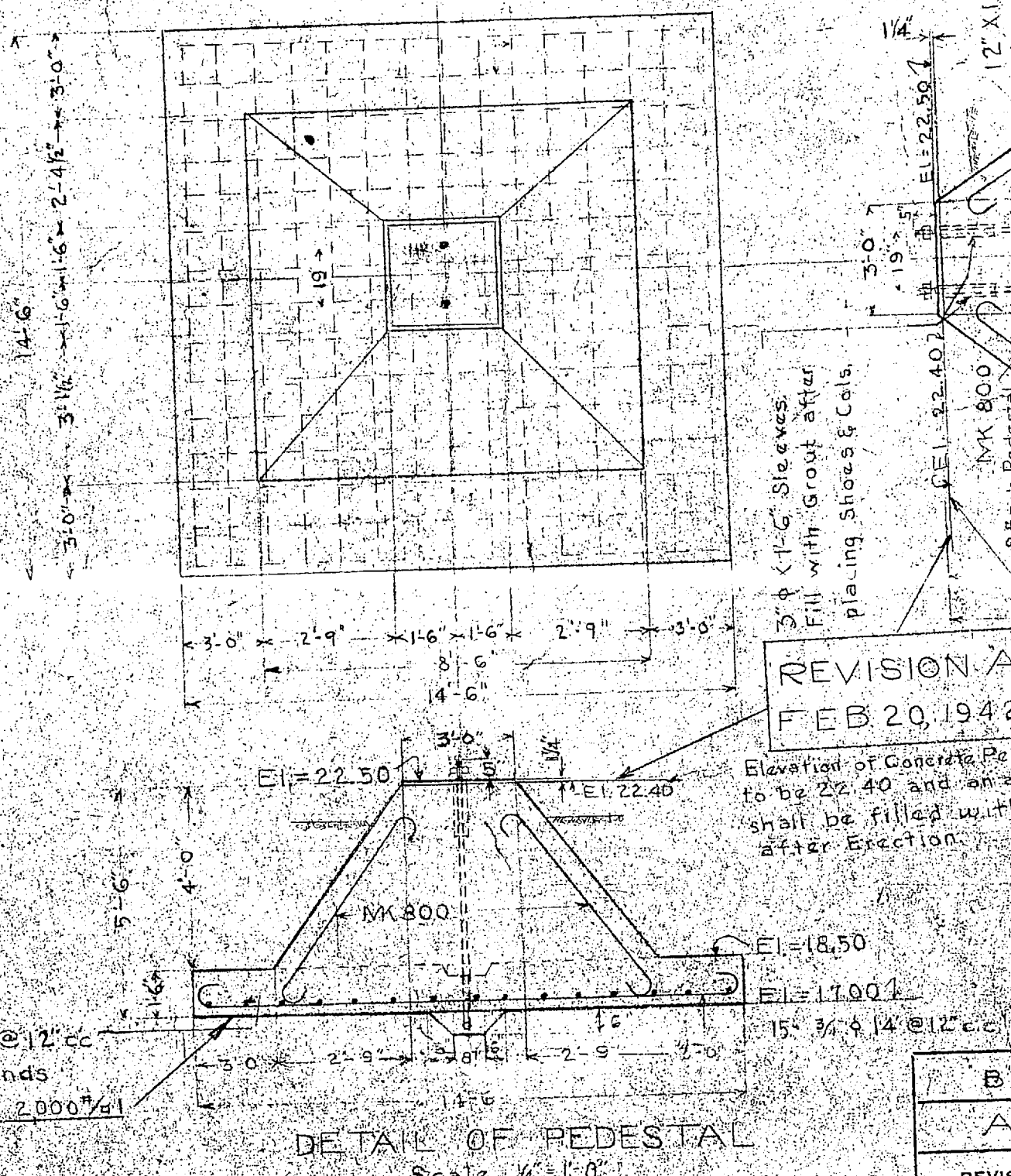
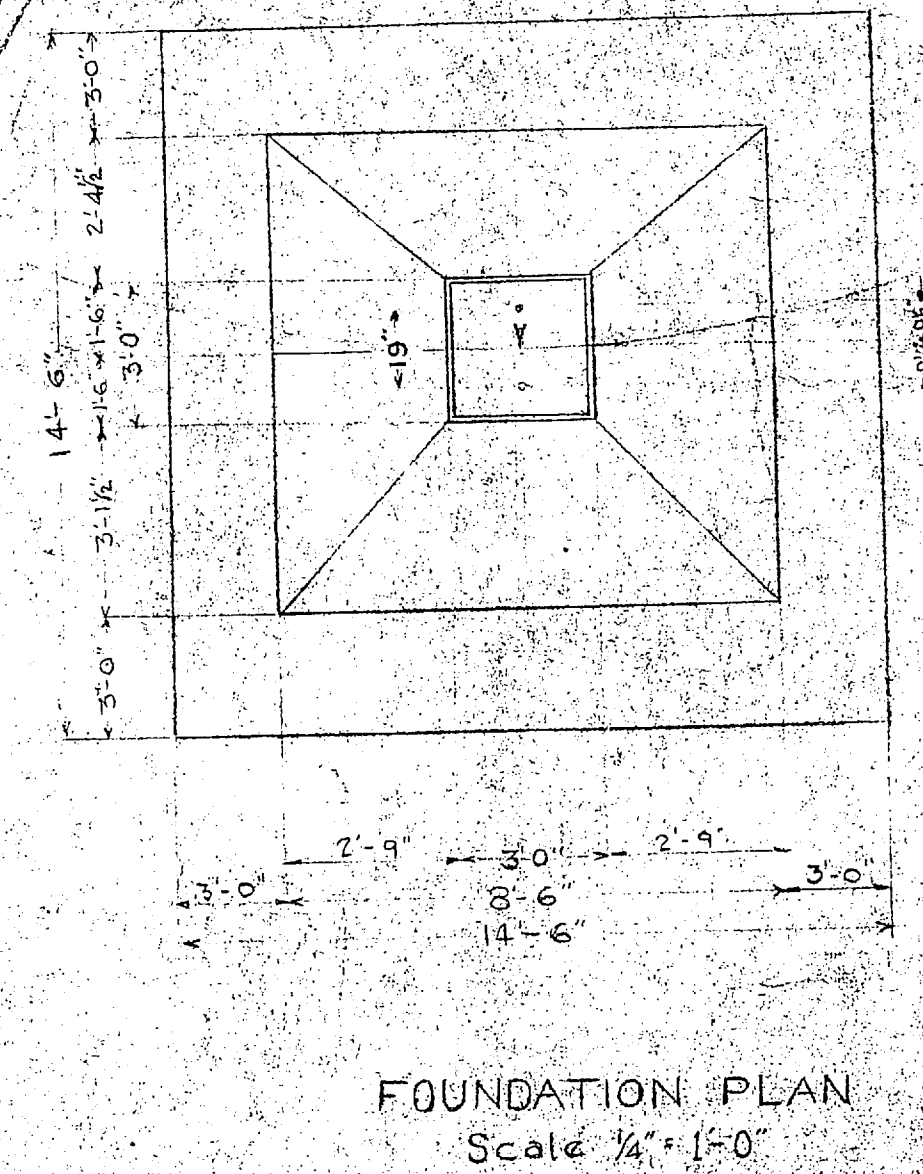
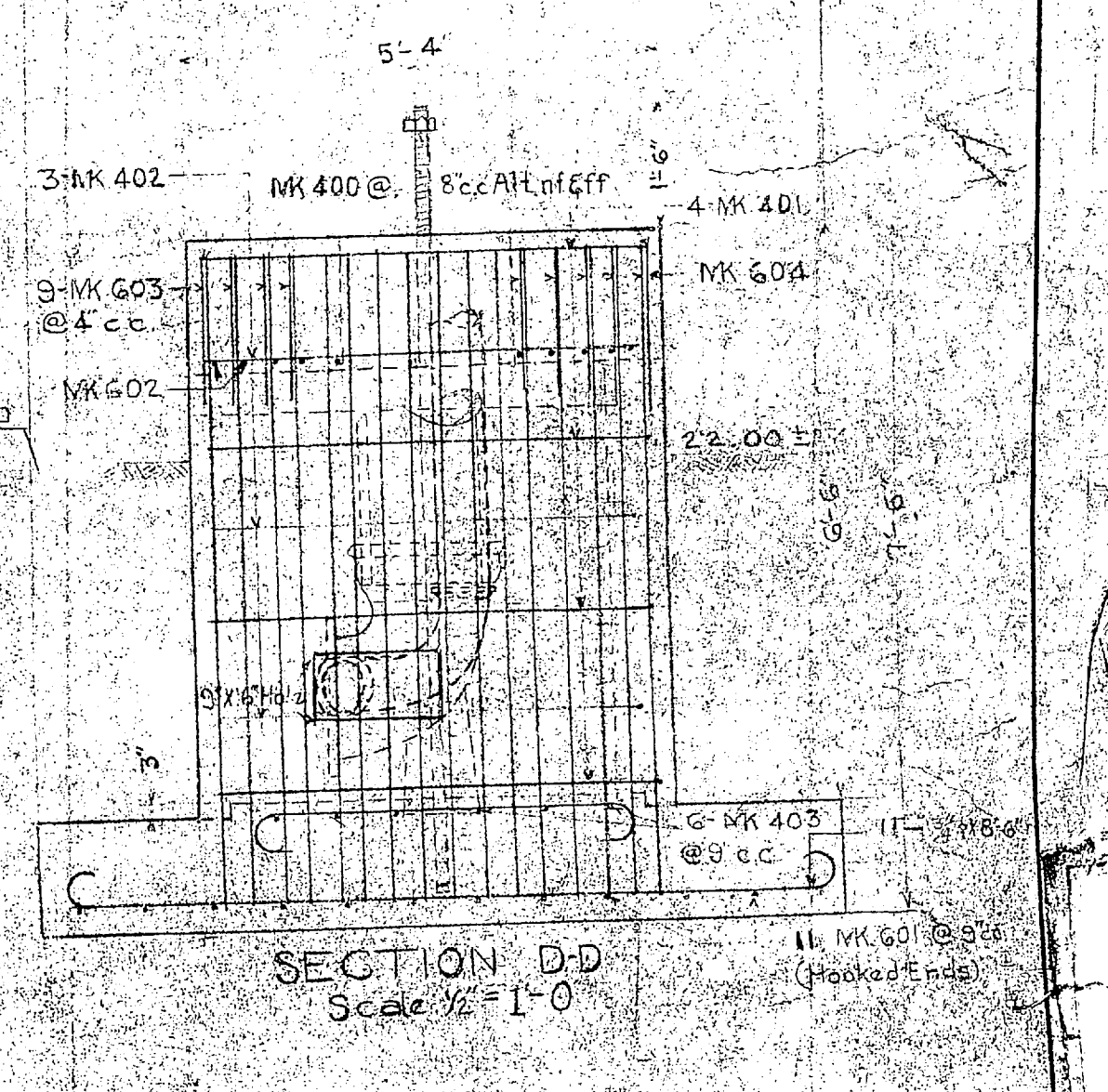
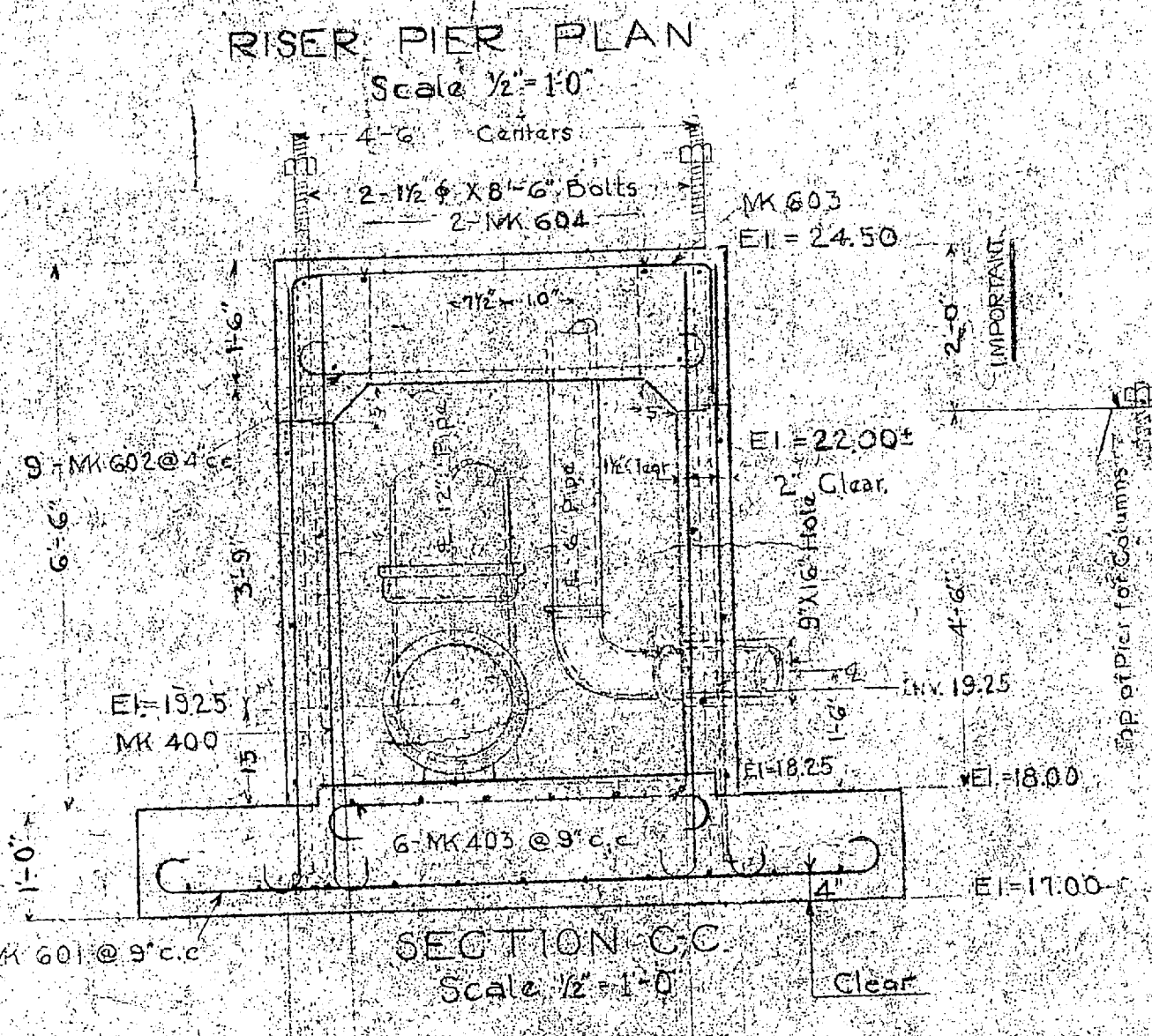
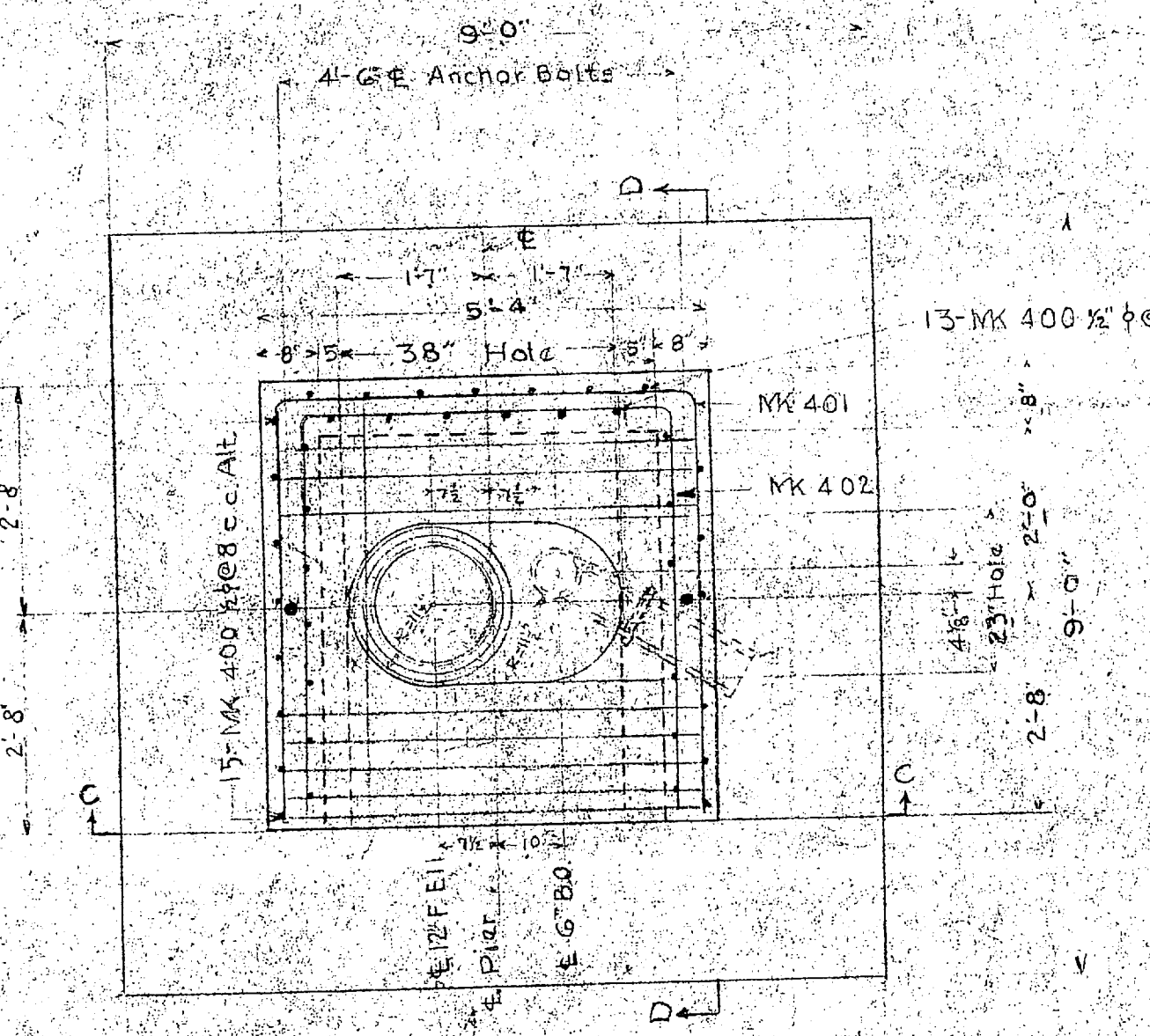


BILL OF REINFORCING BARS									
NO.	SIZE	LX	TYPE	LENGTH	DIMENSIONS				
					A	B	C	D	
1	3/4"	400	2	7'-6"	8"	0"	0"	1'-0"	
2	3/4"	400	2	14'-11"	5'-0"	5'-0"	4'-11"		
3	3/4"	400	2	15'-11"	4'-0"	4'-9"	4'-8"		
4	3/4"	600	1	10'-0"	1'-0"	7'-10"	6"	8'-6"	
5	3/4"	600	1	2'-0"	1'-0"	4'-4"	6"	8'-0"	
6	3/4"	600	2	8'-4"	1'-9"	1'-9"		5'-0"	
7	3/4"	600	2	8'-7"	1'-9"			5'-0"	
8	3/4"	400	1	5'-0"	8"	3'-8"	0'-4"	4'-2"	
9	1/2"	600	1	8'-6"	1'-0"	11'-4"	6"	14'-0"	
10	1/2"	800	1	7'-11"	1'-5"	4'-11"	8"	5'-9"	

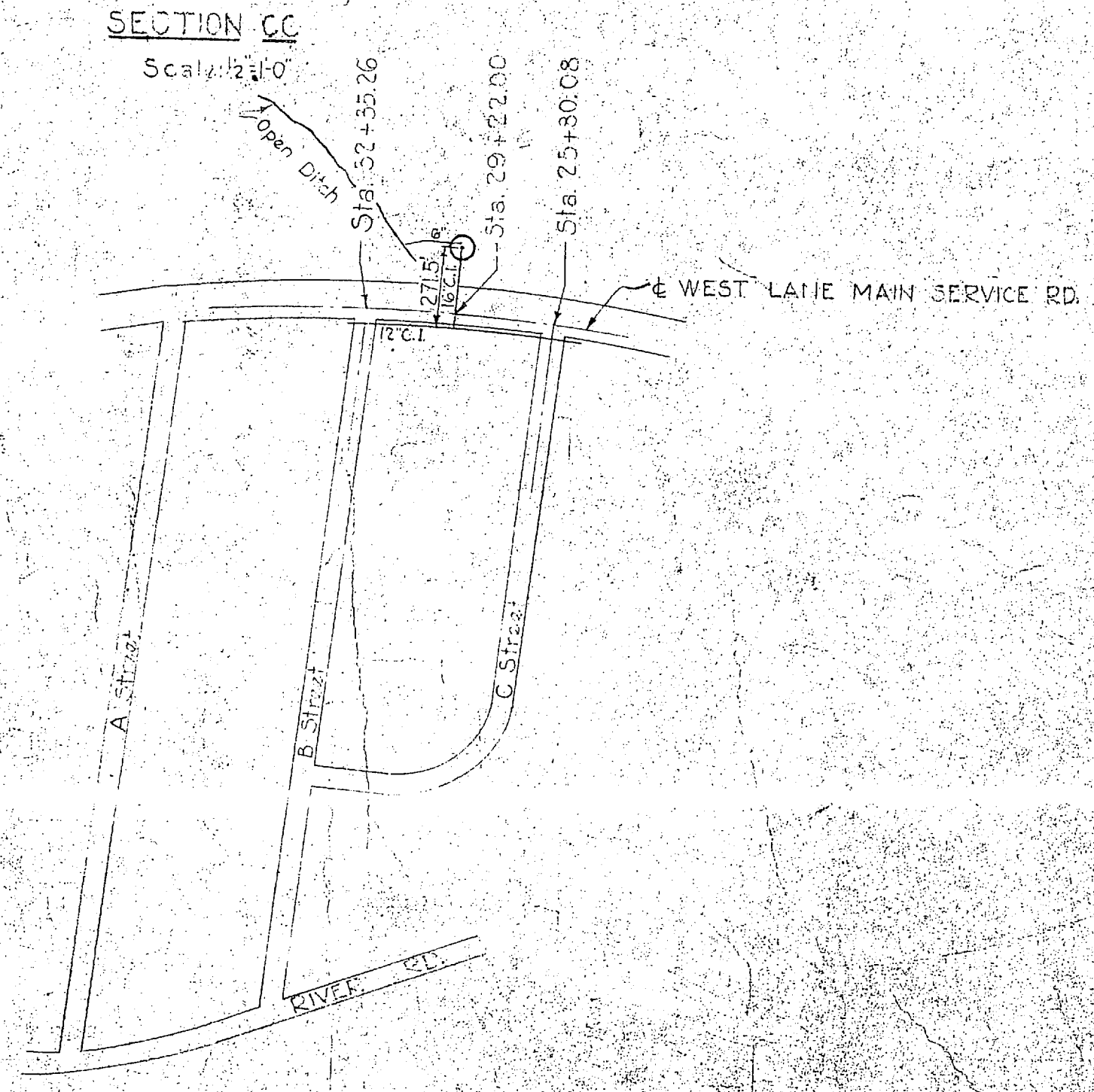
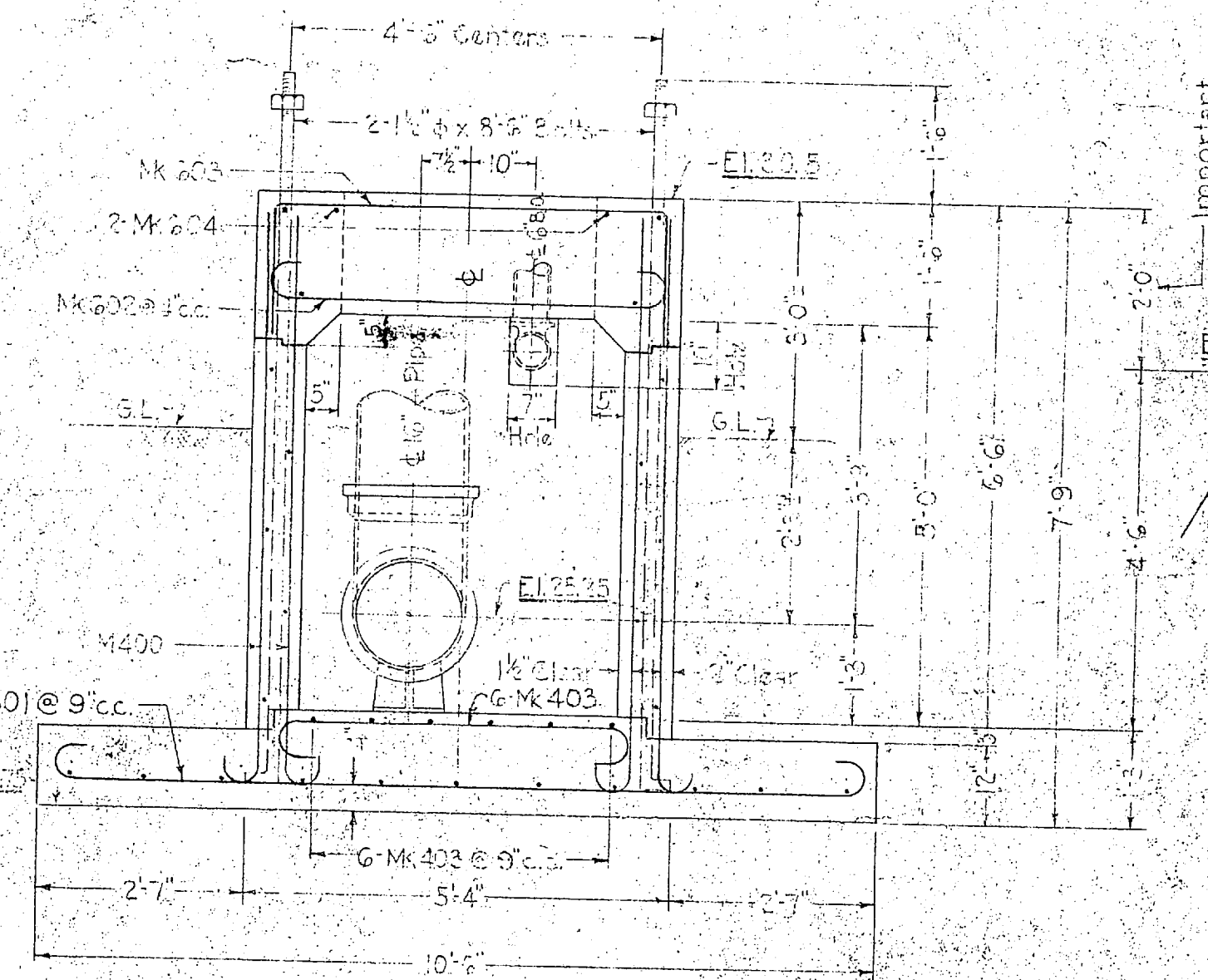
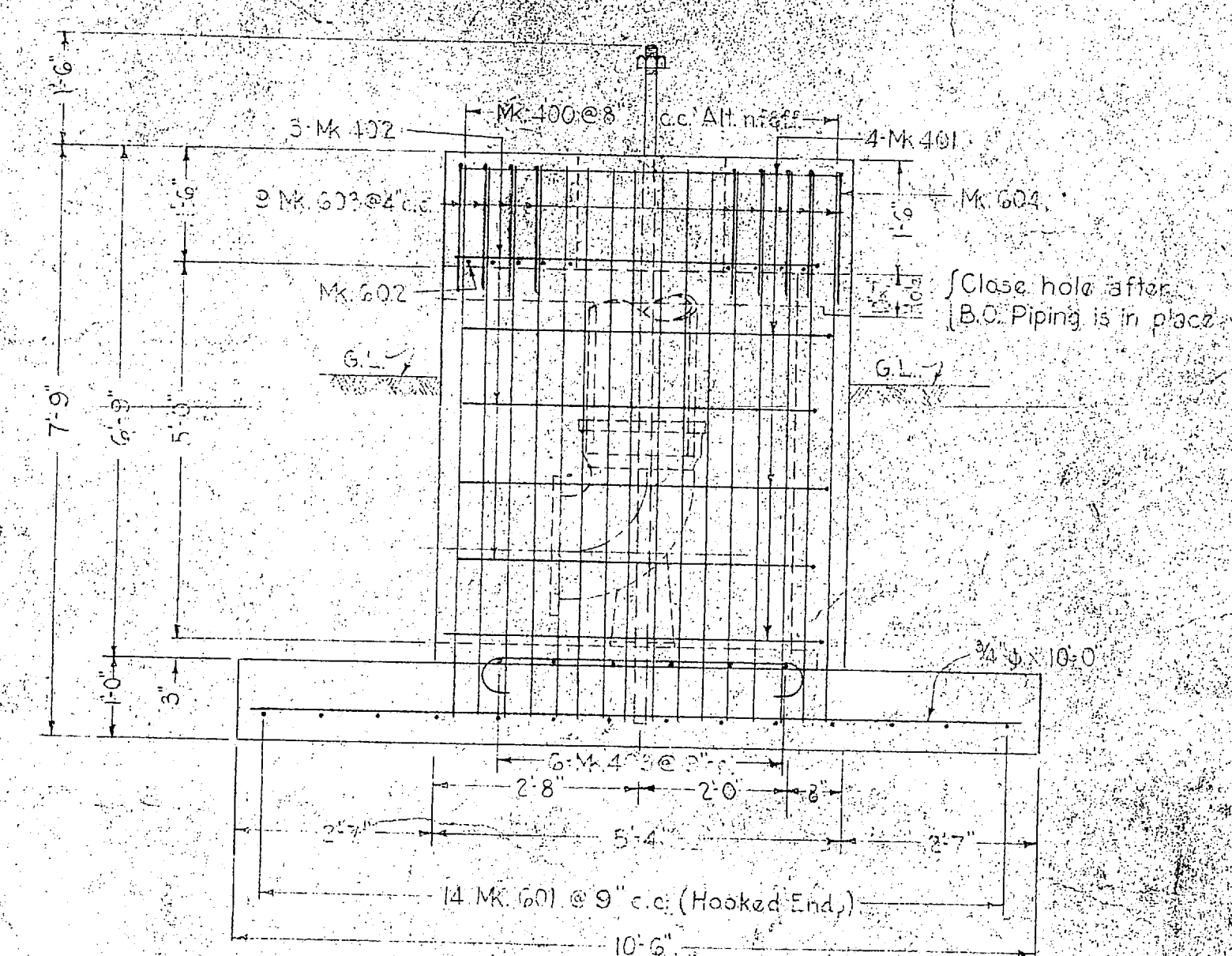
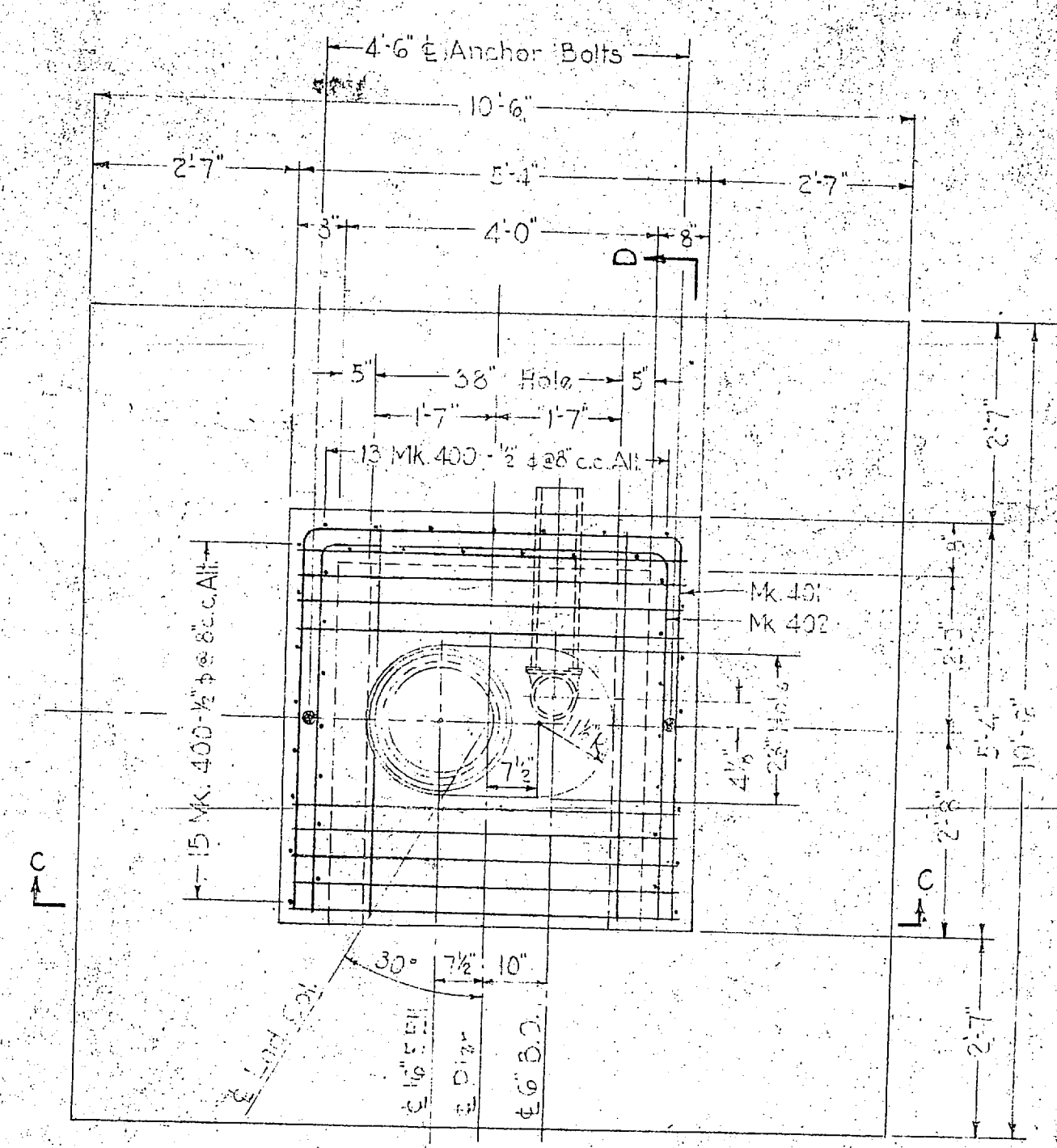
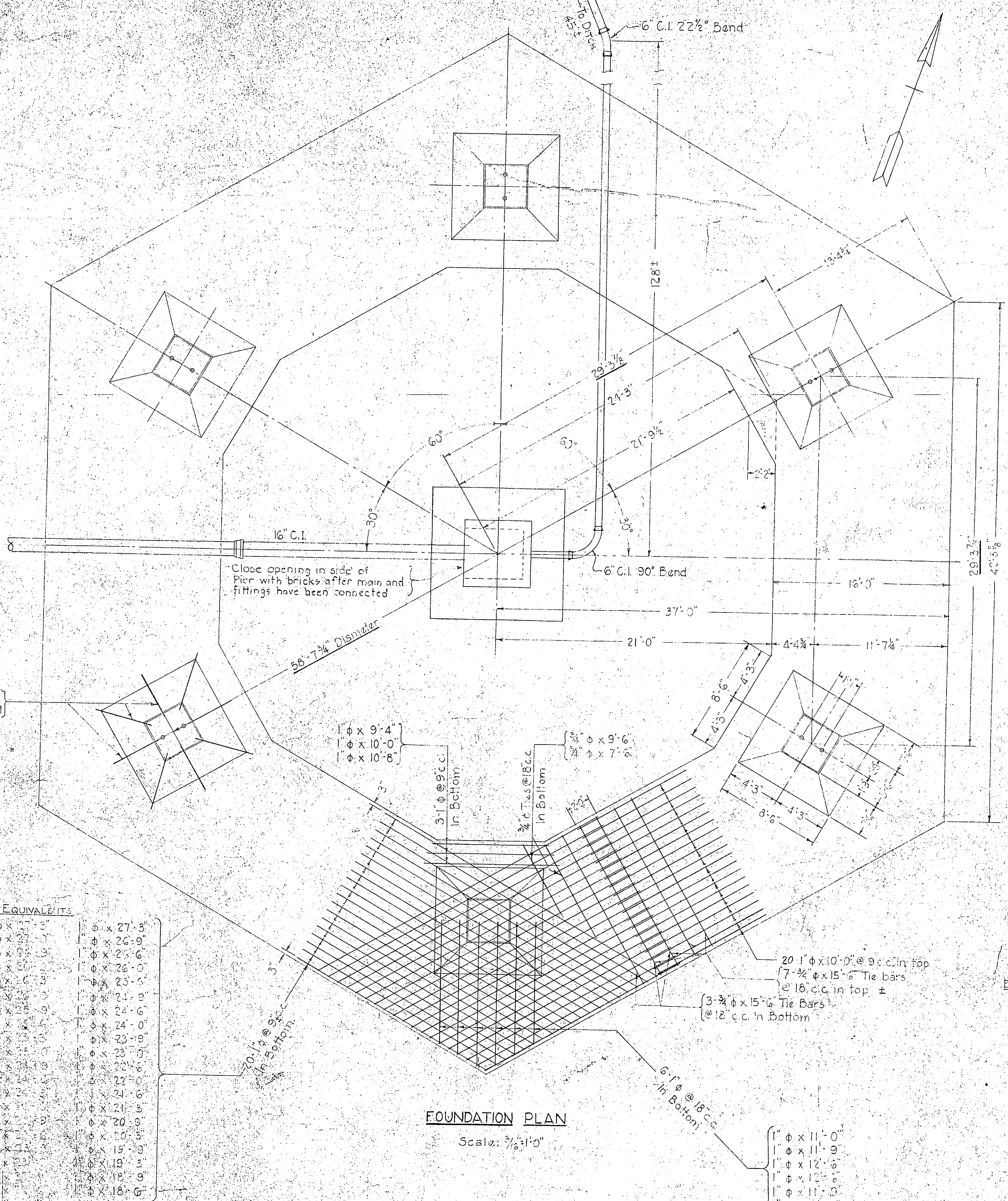


REVISION A
FEB 20, 1942

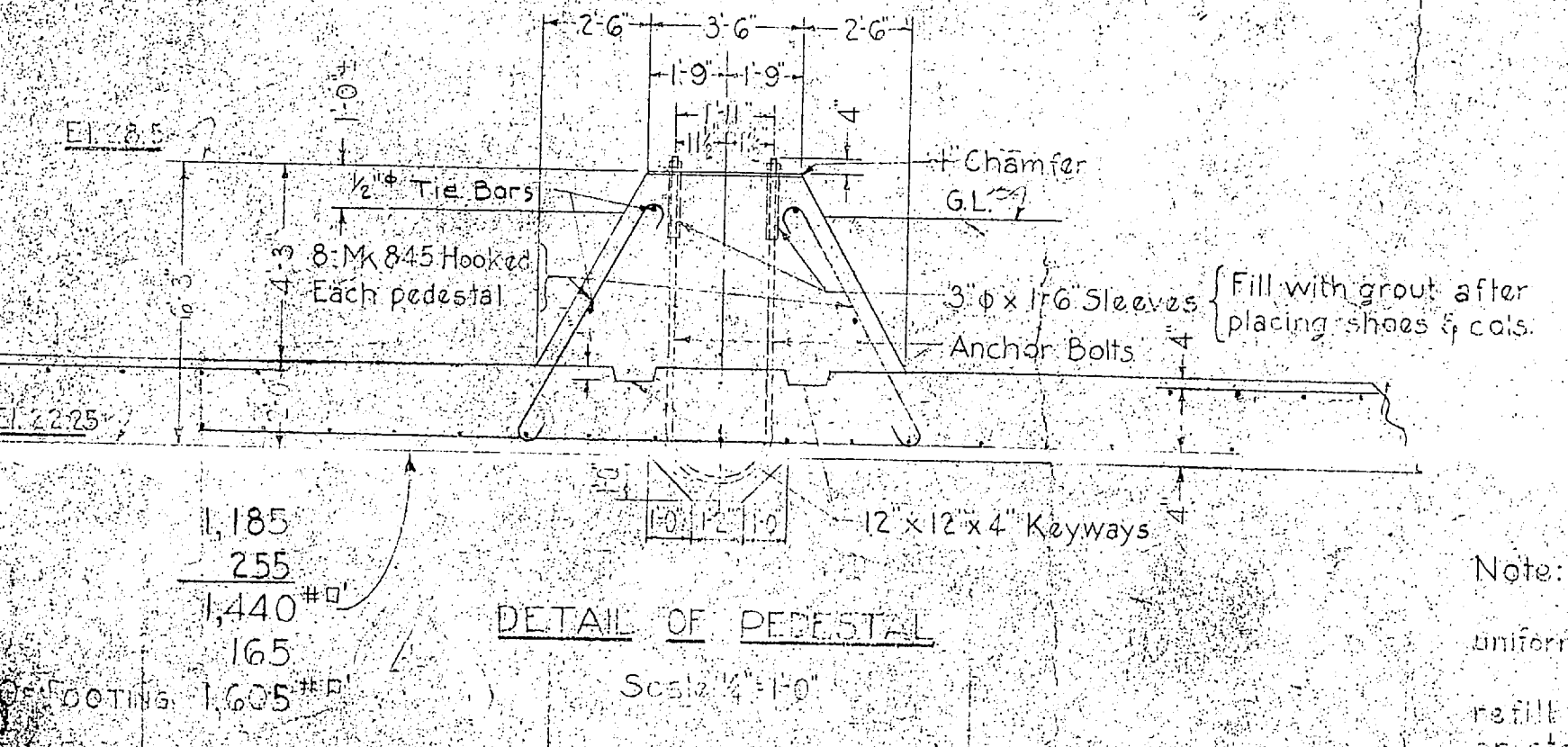
DRAWN BY W.G.M. CHECKED BY M.C.C. IN CHARGE W.G.M. DATE FEB 12, 1942 SCALE AS SHOWN V. & D. DRAWING NO. 162200	CARR & J. E. GREINER CO. - ARCHITECT-ENGINEERS BALTIMORE, MD. MARINE BARRACKS - NEW RIVER, N. C. BUREAU OF YARDS AND DOCKS - U. S. NAVY
REVISION B MARCH 5, 1942	FOUNDATION PLAN 200,000 GALLON ELEVATED TANK OFFICERS QUARTERS AREA
APPROVED: Feb 12, 1942 W.G.M.	SHEET NO. 502 OF 1 U. S. PROJ. NO. P-103-6 U. S. DES. NO. 520

PRINTED ON RECYCLED PAPER
 MADE IN U.S.A.





BILL OF REINFORCING STEEL									
No.	Size	Mark	Type	Quantity	DIMENSIONS				
					Length	Area	Weight	Volume	Notes
1	1/4"		Str.	11.0	6	1.10	1.10		
2	1/4"		Str.	11.0	6	1.10	1.10		
3	1/4"		Str.	12.0	6	1.20	1.20		
4	1/4"		Str.	12.0	6	1.20	1.20		
5	1/4"		Str.	21.0	6	2.10	2.10		
6	1/4"		Str.	21.0	6	2.10	2.10		
7	1/4"		Str.	21.0	6	2.10	2.10		
8	1/4"		Str.	21.0	6	2.10	2.10		
9	1/4"		Str.	21.0	6	2.10	2.10		
10	1/4"		Str.	21.0	6	2.10	2.10		
11	1/4"		Str.	21.0	6	2.10	2.10		
12	1/4"		Str.	21.0	6	2.10	2.10		
13	1/4"		Str.	21.0	6	2.10	2.10		
14	1/4"		Str.	21.0	6	2.10	2.10		
15	1/4"		Str.	21.0	6	2.10	2.10		
16	1/4"		Str.	21.0	6	2.10	2.10		
17	1/4"		Str.	21.0	6	2.10	2.10		
18	1/4"		Str.	21.0	6	2.10	2.10		
19	1/4"		Str.	21.0	6	2.10	2.10		
20	1/4"		Str.	21.0	6	2.10	2.10		
21	1/4"		Str.	21.0	6	2.10	2.10		
22	1/4"		Str.	21.0	6	2.10	2.10		
23	1/4"		Str.	21.0	6	2.10	2.10		
24	1/4"		Str.	21.0	6	2.10	2.10		
25	1/4"		Str.	21.0	6	2.10	2.10		
26	1/4"		Str.	21.0	6	2.10	2.10		
27	1/4"		Str.	21.0	6	2.10	2.10		
28	1/4"		Str.	21.0	6	2.10	2.10		
29	1/4"		Str.	21.0	6	2.10	2.10		
30	1/4"		Str.	21.0	6	2.10	2.10		
31	1/4"		Str.	21.0	6	2.10	2.10		
32	1/4"		Str.	21.0	6	2.10	2.10		
33	1/4"		Str.	21.0	6	2.10	2.10		
34	1/4"		Str.	21.0	6	2.10	2.10		
35	1/4"		Str.	21.0	6	2.10	2.10		
36	1/4"		Str.	21.0	6	2.10	2.10		
37	1/4"		Str.	21.0	6	2.10	2.10		
38	1/4"		Str.	21.0	6	2.10	2.10		
39	1/4"		Str.	21.0	6	2.10	2.10		
40	1/4"		Str.	21.0	6	2.10	2.10		
41	1/4"		Str.	21.0	6	2.10	2.10		
42	1/4"		Str.	21.0	6	2.10	2.10		
43	1/4"		Str.	21.0	6	2.10	2.10		
44	1/4"		Str.	21.0	6	2.10	2.10		
45	1/4"		Str.	21.0	6	2.10	2.10		
46	1/4"		Str.	21.0	6	2.10	2.10		
47	1/4"		Str.	21.0	6	2.10	2.10		
48	1/4"		Str.	21.0	6	2.10	2.10		
49	1/4"		Str.	21.0	6	2.10	2.10		
50	1/4"		Str.	21.0	6	2.10	2.10		



Note: Make certain the subgrade under the slab is uniform and will produce equal bearing at all points. Remove all soft or questionable material and refill with thoroughly compacted sand, gravel or stone.

Estimate of quantities:
 280 Cu. Yds. Concrete
 18,500 Lb. Reinforcing Steel

MAX. SOIL PRESSURE:
 D.L. OF TANK, WATER & CONC. 1,185
 D.L. OF EARTH FILL 255
 TOTAL DEAD LOAD 1,440[#]
 WIND LOAD 165
 TOTAL LOAD ON FOOTING OF PEDESTAL 1,605[#]

DRAWN BY: M.O.C.	CARR & J. E. GREINER CO., ARCHITECT-ENGINEERS DURHAM, N. C.
TRACED BY: G.H.P.	BALTIMORE, MD.
CHECKED BY: H.E.C.	MARINE BARRACKS-NEW RIVER, N. C.
IN CHARGE: W.C.V.	BUREAU OF YARDS AND DOCKS, U. S. NAVY
DATE: Nov. 16, 1917	
SCALE: As Shown	
Y. & D. DRAWING NO. 162220	
APPROVED: [Signature]	

