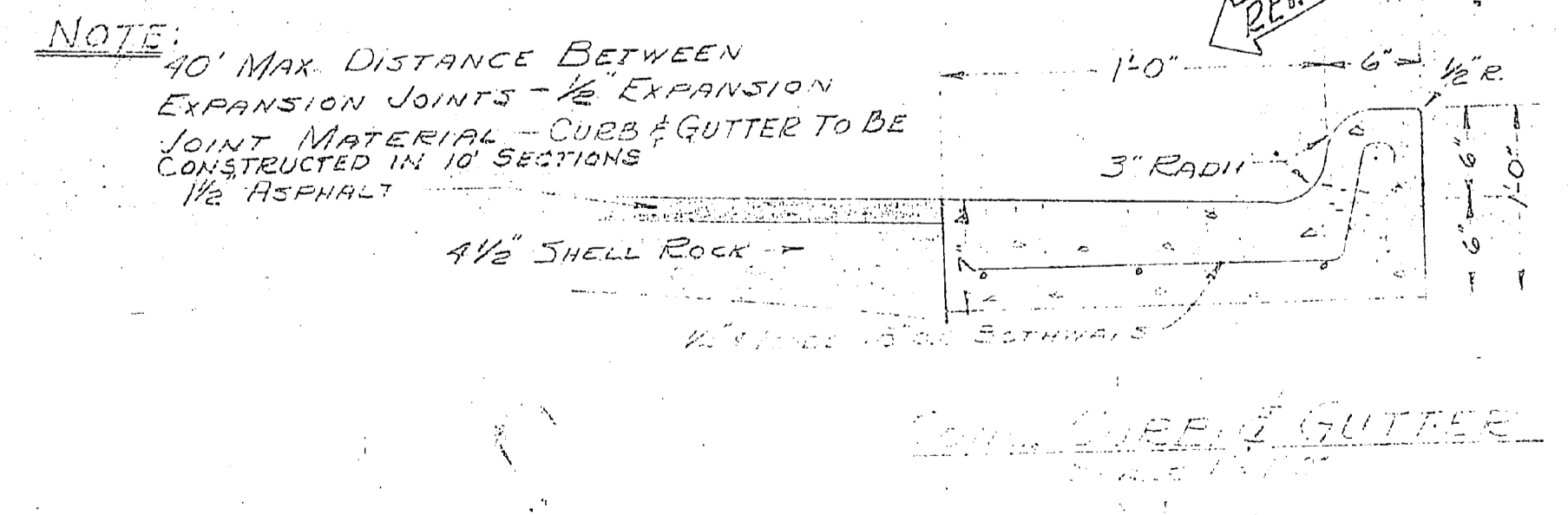
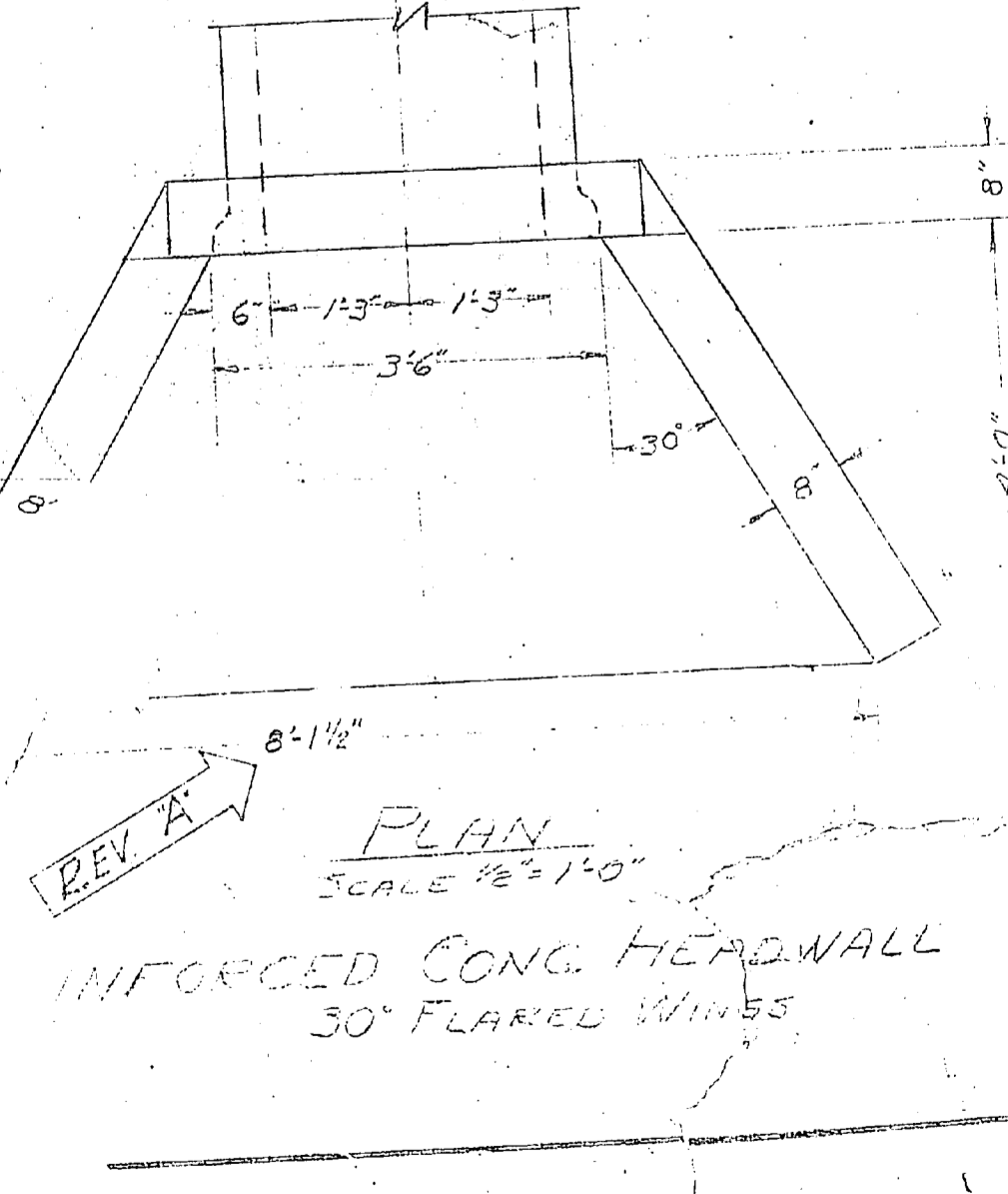
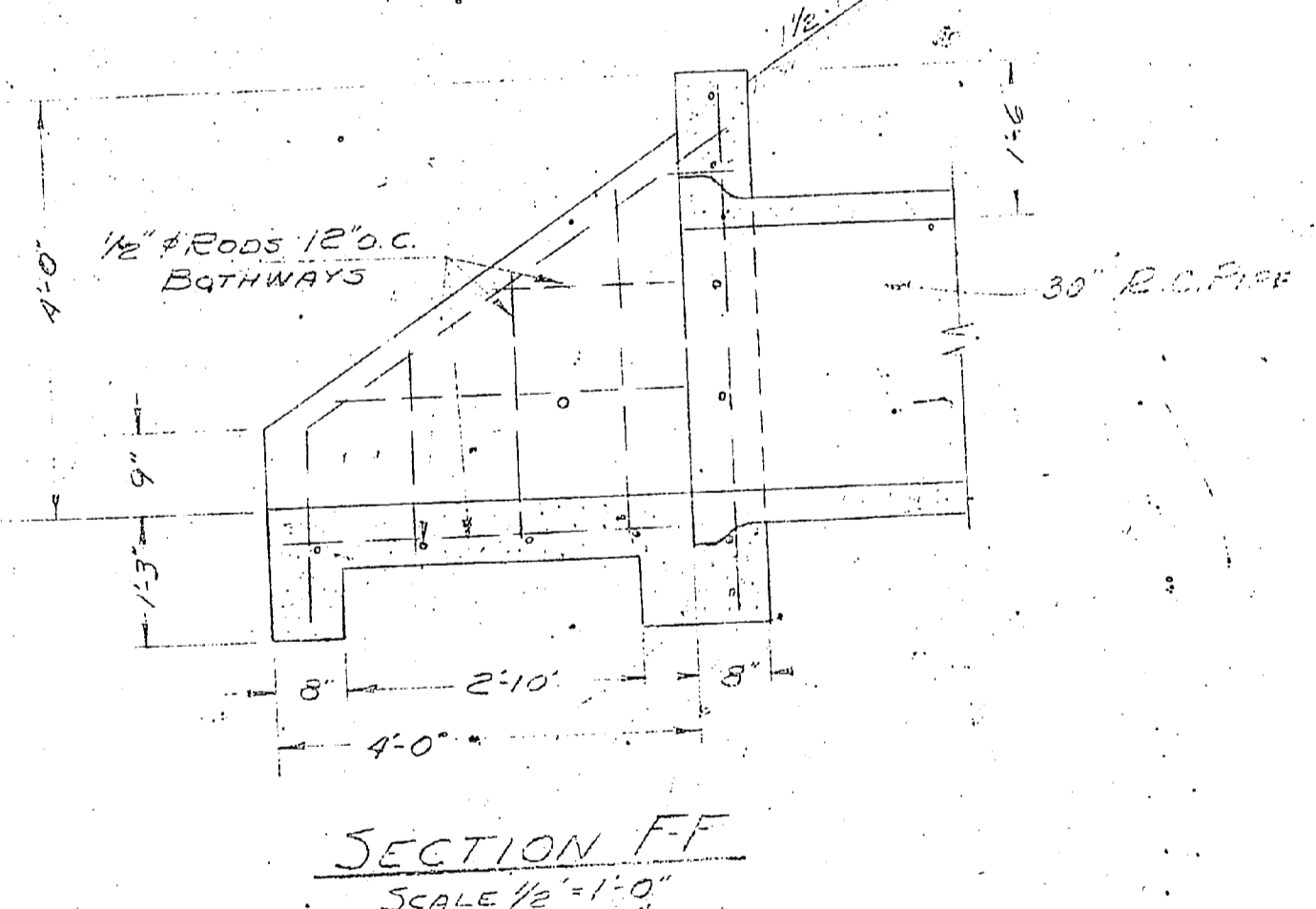
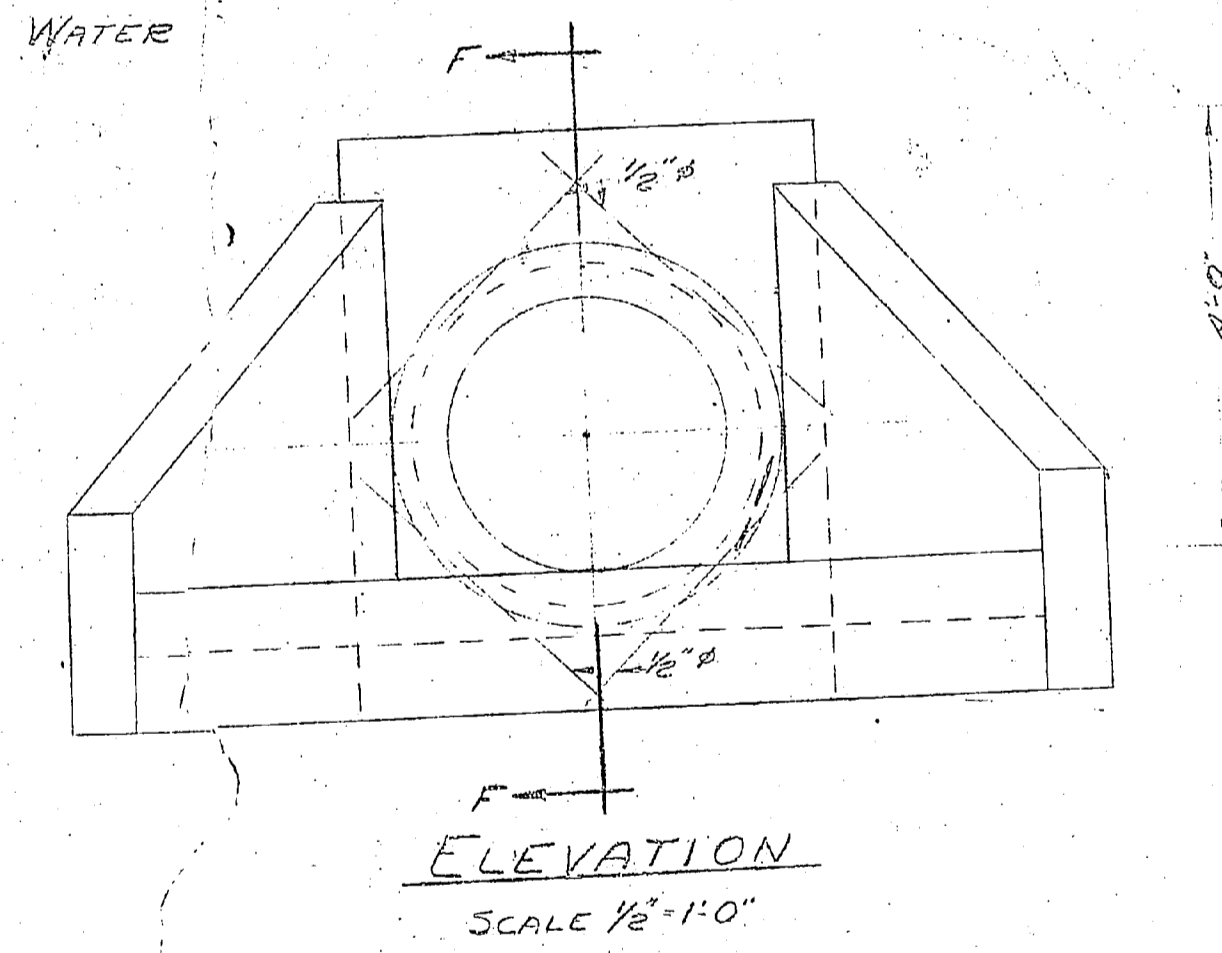
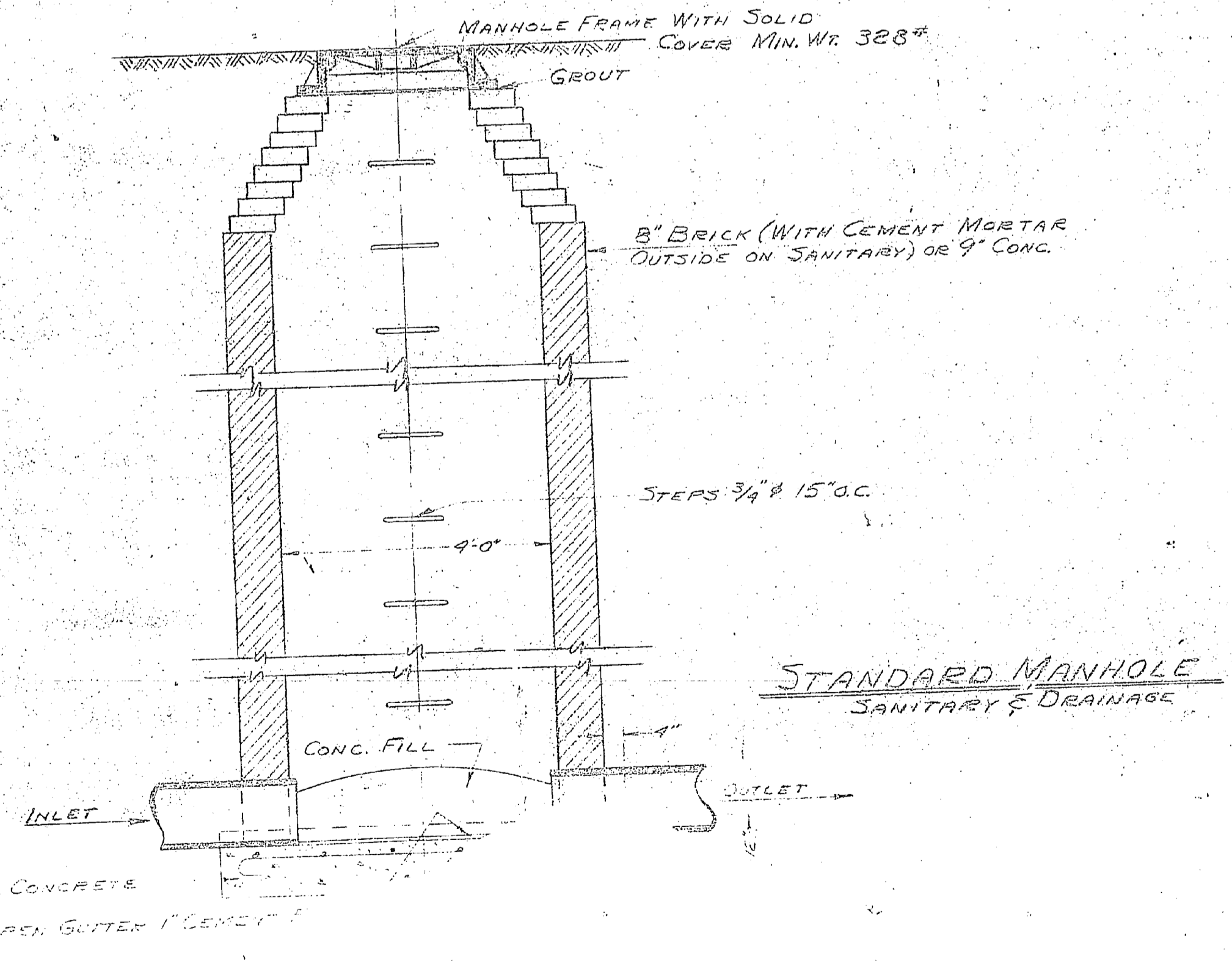
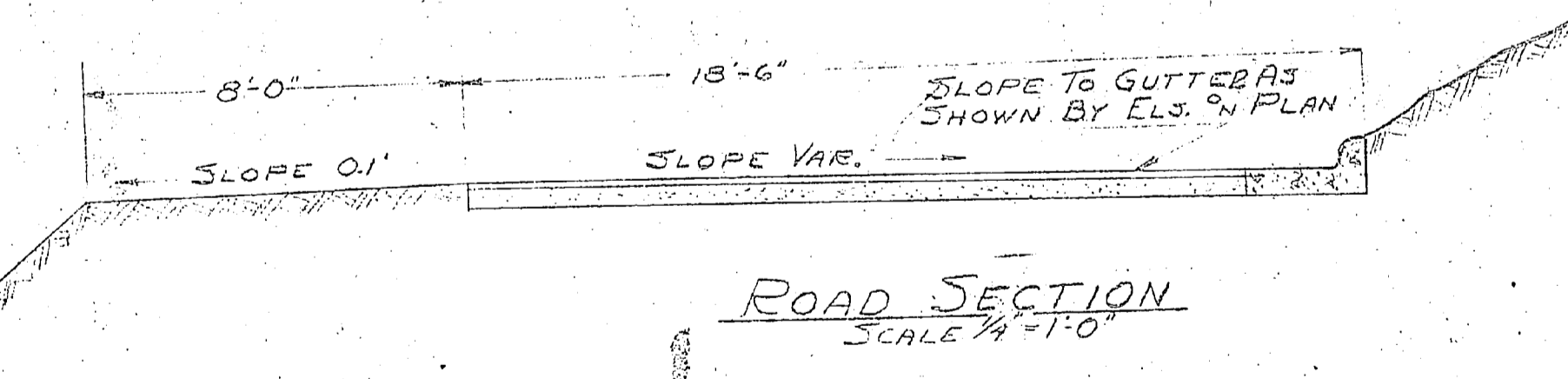
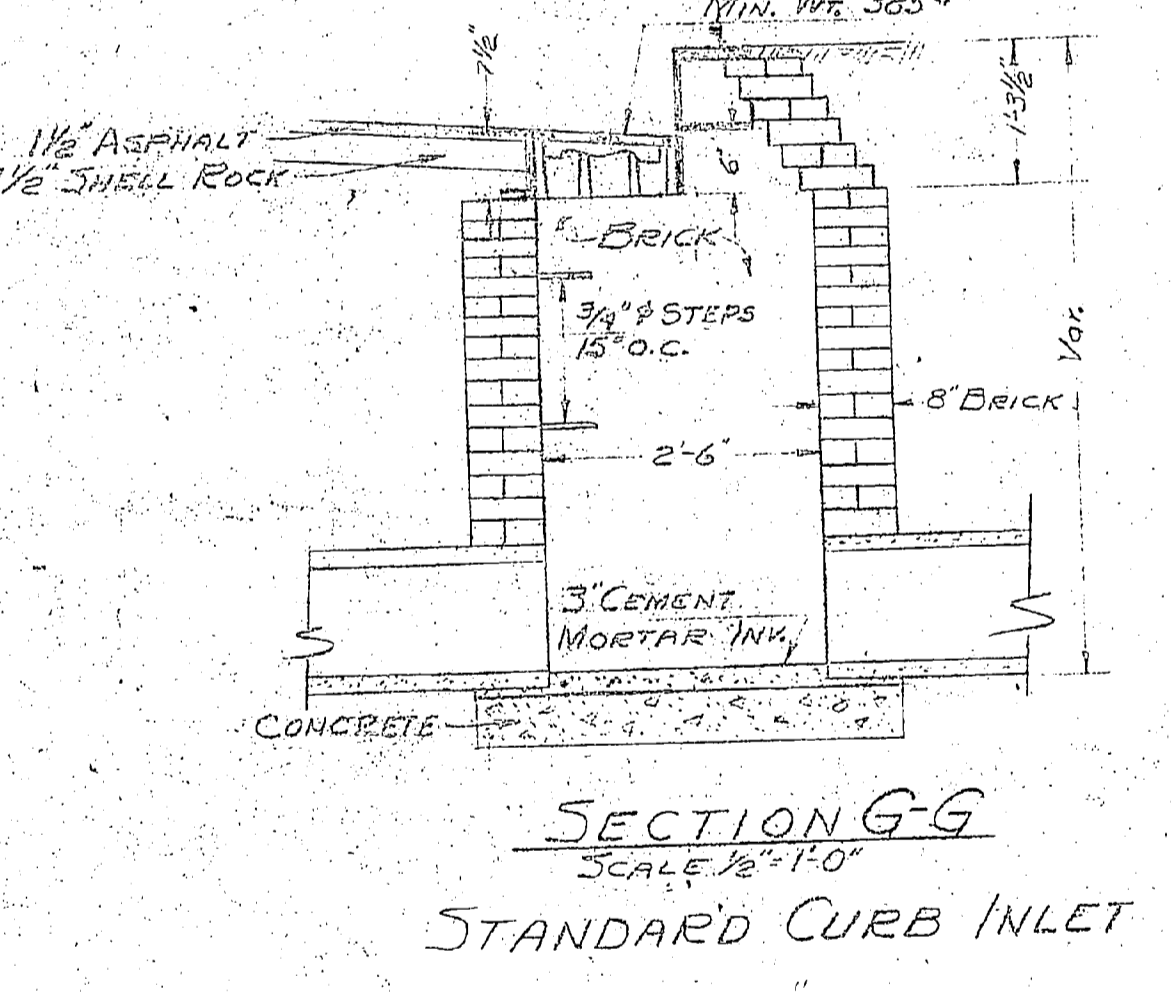
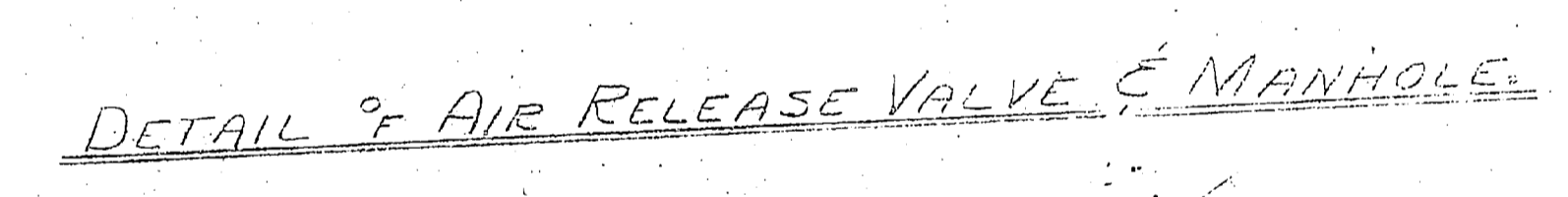
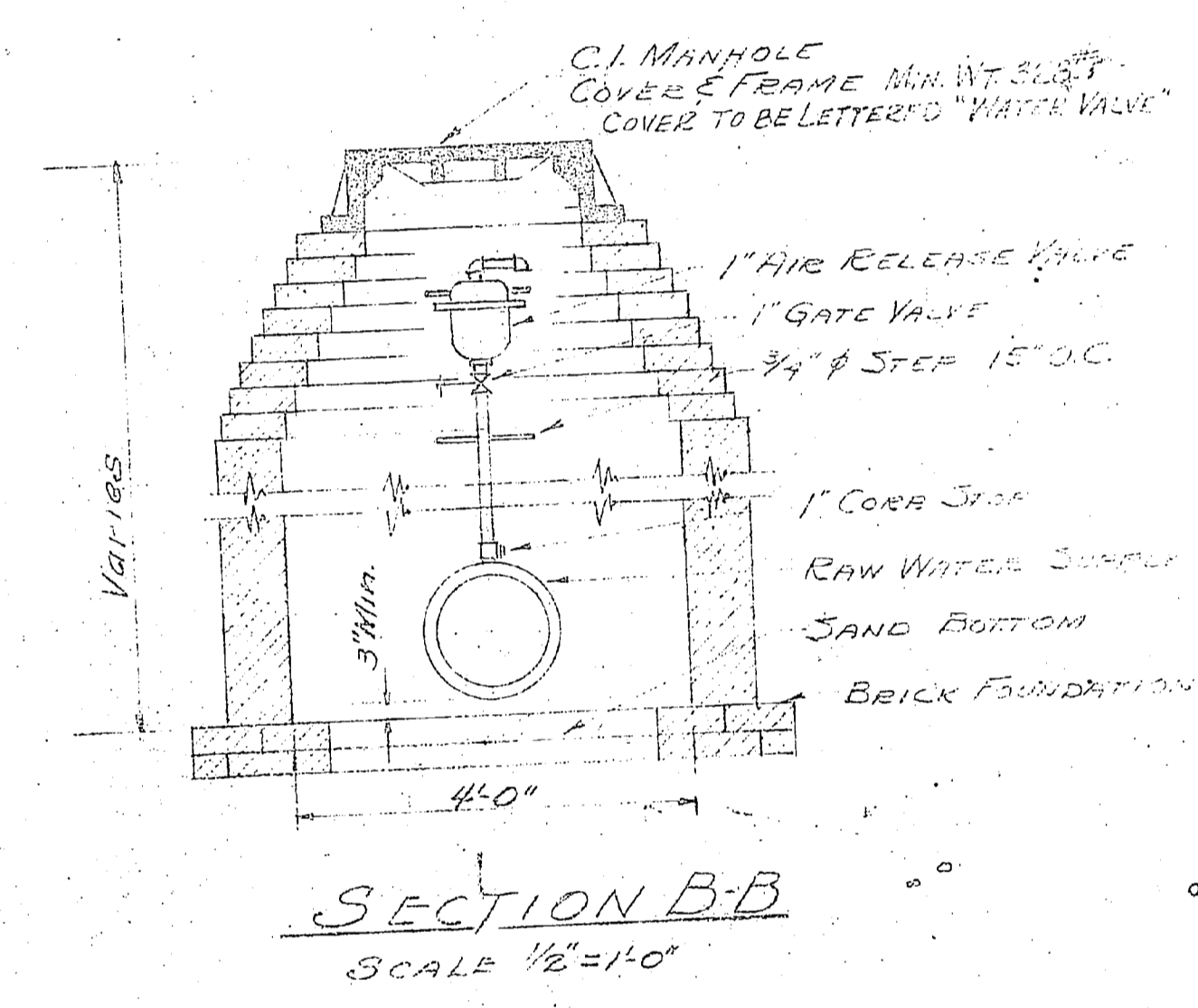
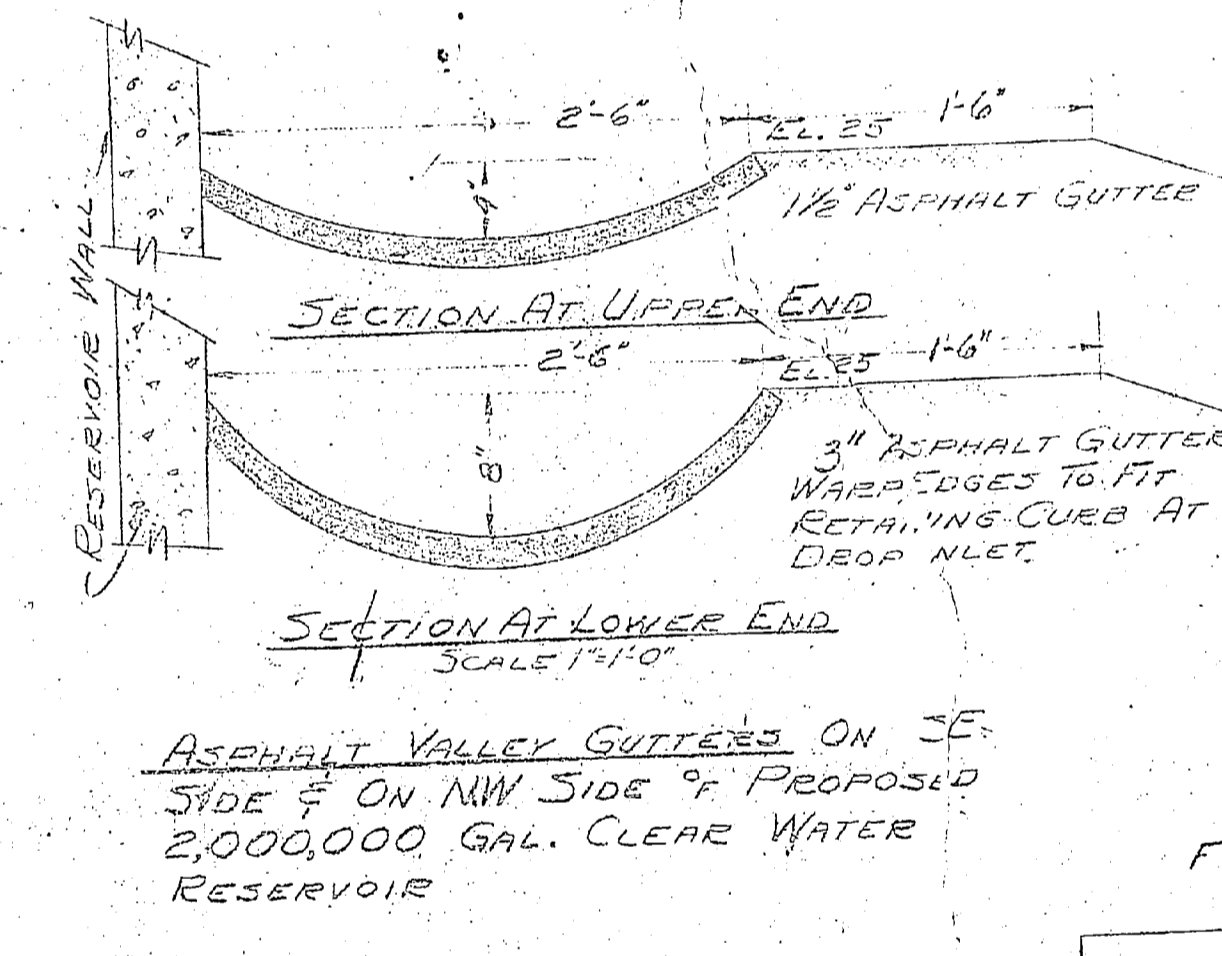
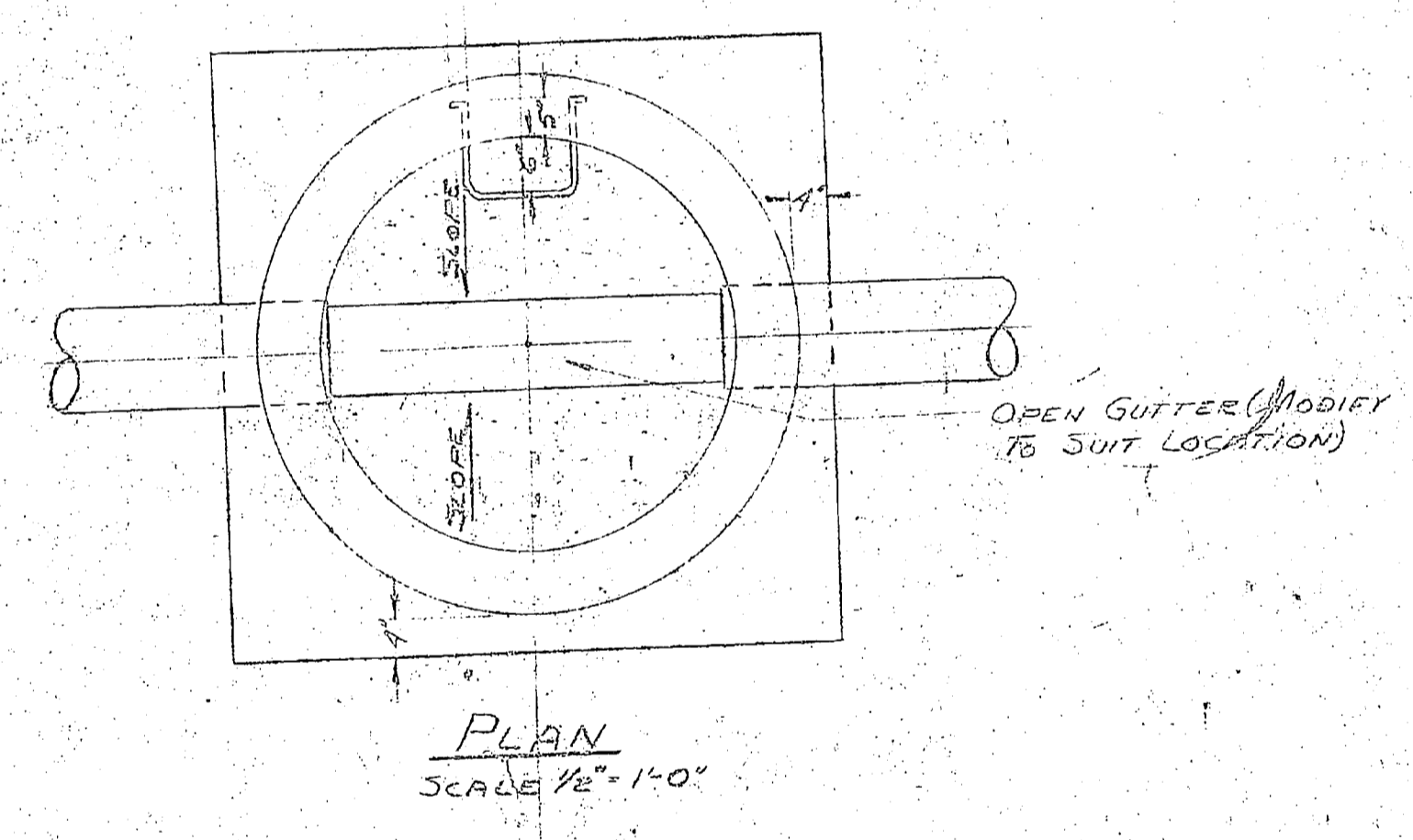
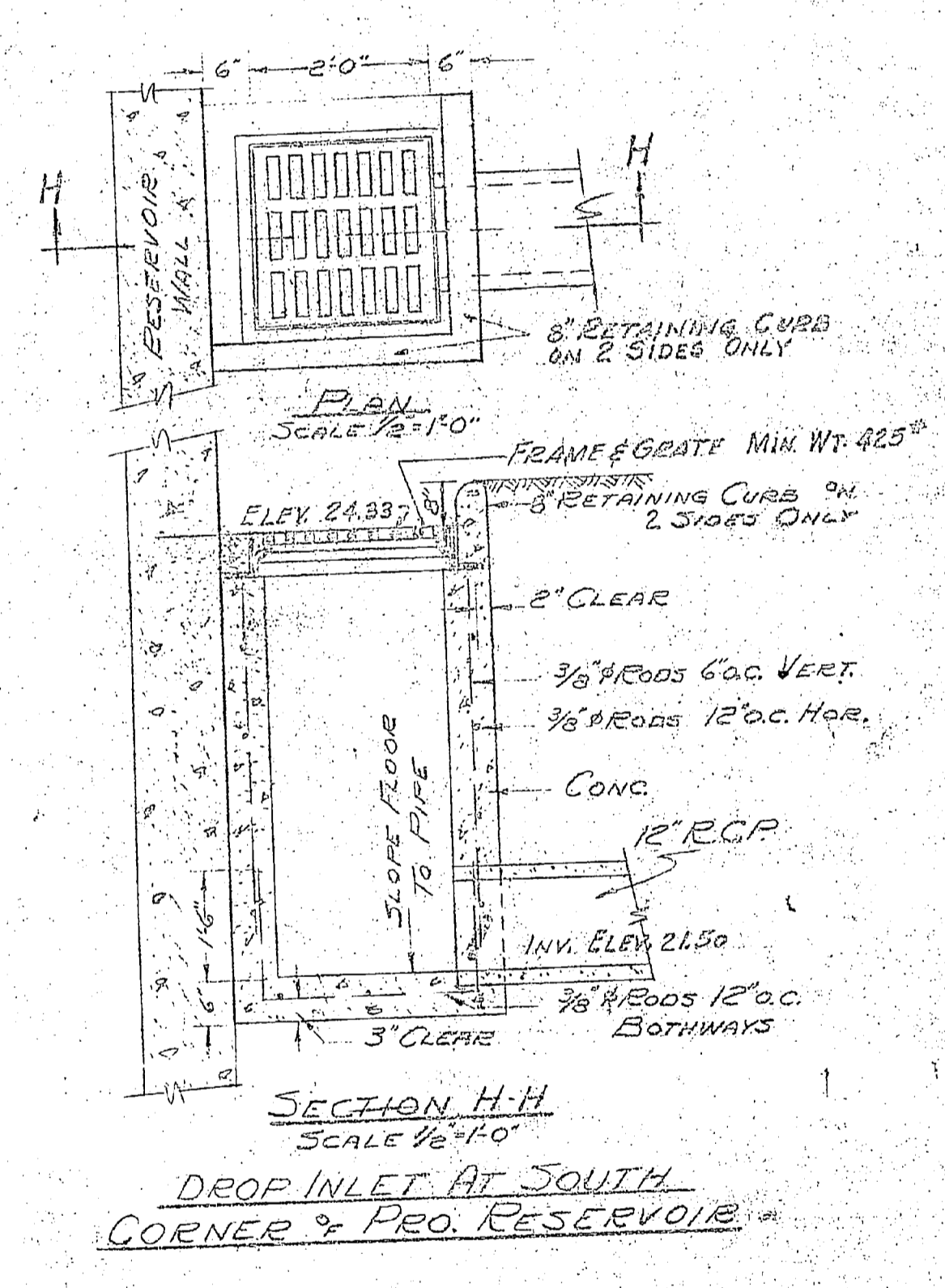
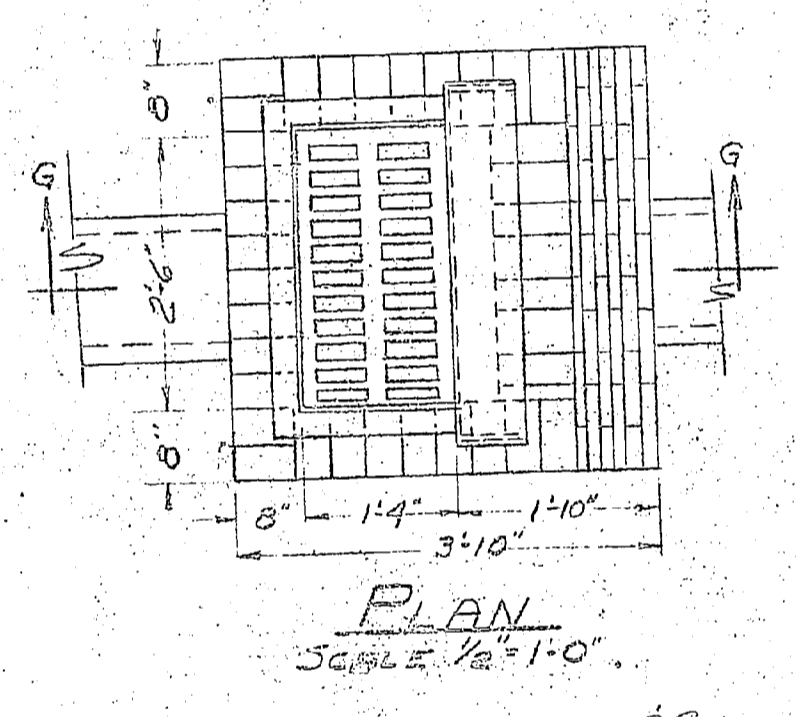


NOTE: ALL PILING TO BE 35' LONG WITH 6" MIN. TIP AND ARE TO BE DRIVEN TO 12 TON BENTONITE



NO.	DATE	REVISION
1	1/15/10	M
P.W. DRAWING NO. 7868		
DES	1/15/10	CORREL
DRWN	1/15/10	R
TR	1/15/10	
CHK	1/15/10	
SUPV	1/15/10	MISC
APPROVE		
IN CHARGE: [Signature]		
APPR: VED		
THE QUARTERMASTER THE MARINE		

