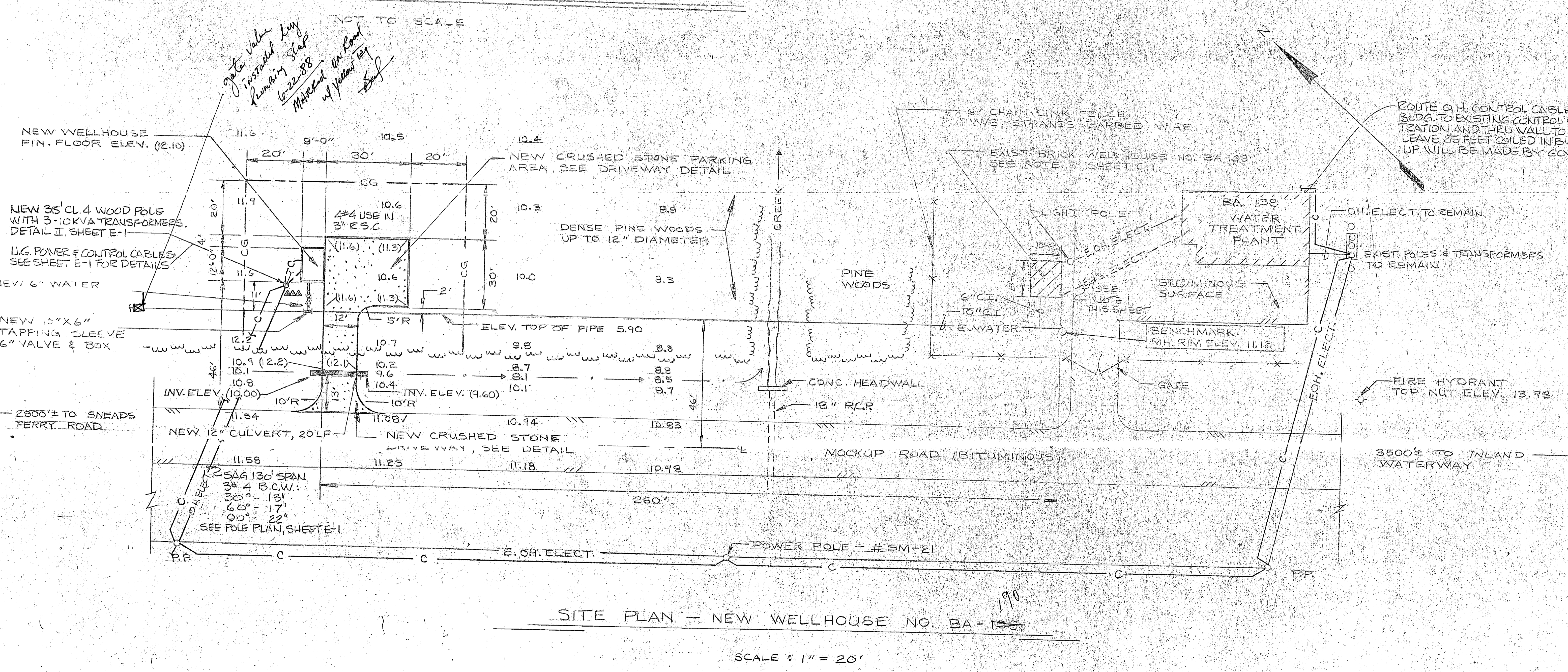
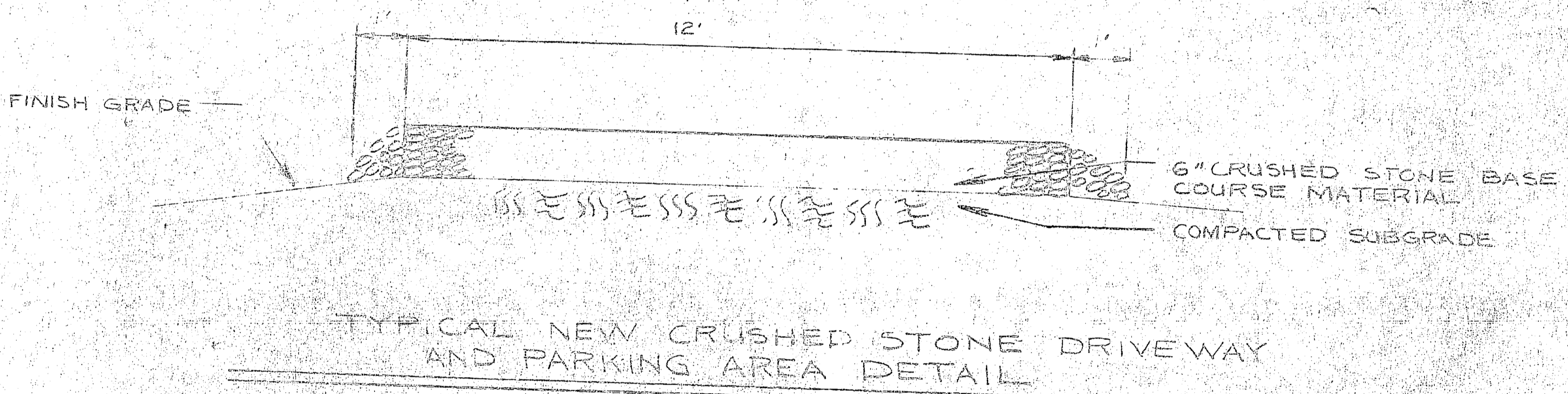


REVISIONS		
NO.	DESCRIPTION	DATE

- ELECTRICAL NOTES:**
- FOR EXISTING WELLHOUSE RR-46 ONLY, REMOVE (3) EXISTING TRANSFORMERS, OPEN FUSED OUTLETS, LIGHTNING ARRESTERS, AND POLE HARDWARE ON LOWER. REMOVE SECONDARY WIRING FROM POLE AND UNDERGROUND TO EXISTING WELL.
  - FOR EXISTING WELLHOUSE BA-109, REMOVE EXISTING UNDERGROUND ELECTRIC FROM WATER TREATMENT PLANT TO WELLHOUSE.

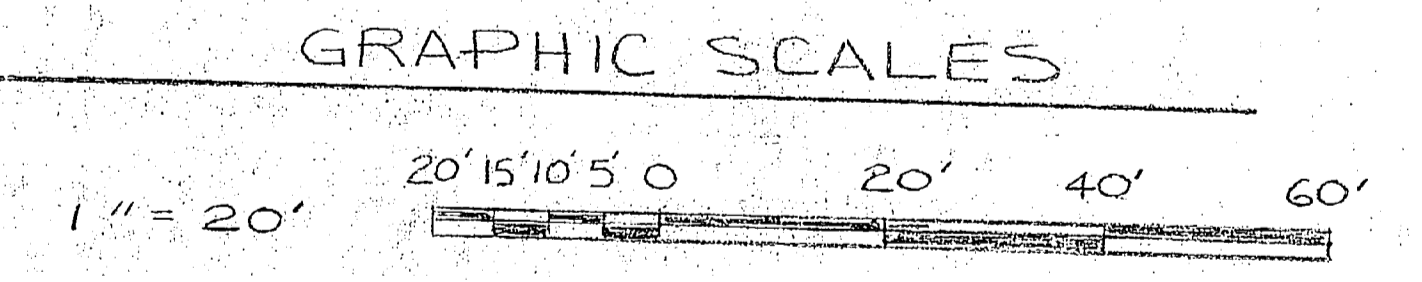


DATA FOR EXIST. WELL NO. RR-46

DISCHARGE PRESSURE	50 PSI
DISCHARGE RATE	200 GPM
PUMP BASE ELEV.	56.4
LOWER END ELEV.	-404.4

DATA FOR EXIST. WELL NO. BA-109

DISCHARGE PRESSURE	56 PSI
DISCHARGE RATE	200 GPM
PUMP BASE ELEV.	9.9
LOWER END ELEV.	-52.1

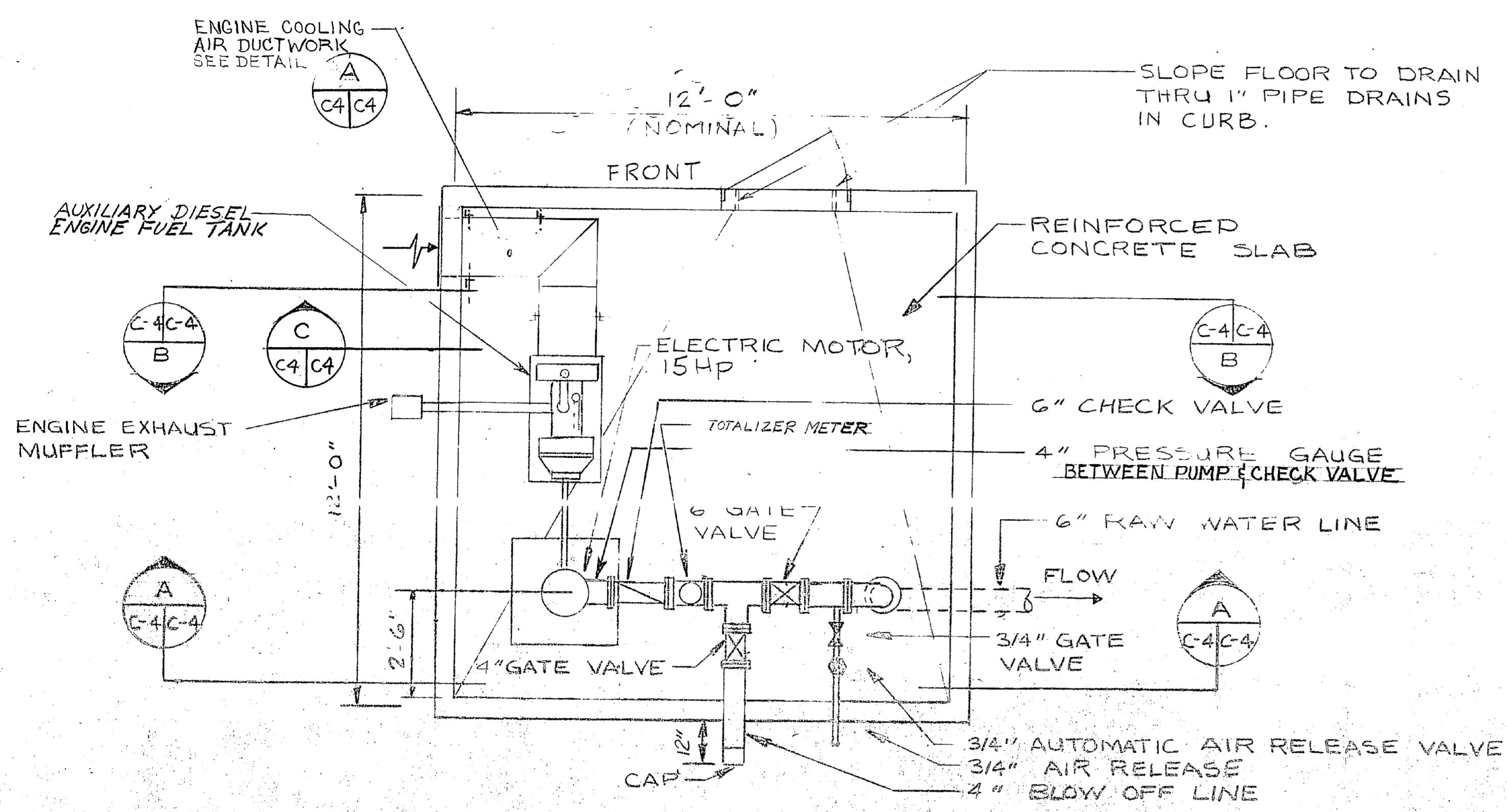


EPD DWG. NO. 133404 JOB ORDER NO. 348D6789 DES. MCCREADY DRWN. MCCREADY TR. [Signature] CHK. J. H. L. [Signature] DR. MGR. [Signature] DES. DIR. [Signature] SATISFACTORY TO [Signature] APPROVED [Signature] DATE [Date] FOR EPD FOR COMMANDER NAVFAC		DEPARTMENT OF THE NAVY NAVAL FACILITIES ENGINEERING COMMAND <b>ATLANTIC DIVISION</b> NORFOLK, VA. U.S. MARINE CORPS BASE CAMP LEJEUNE, NORTH CAROLINA <b>REPLACE WATER WELLS</b> SITE PLAN HQMC 7302 NAVFAC DRAWING NO. 4033404 CONTRL. CONTR. NO. NG2470-76-B-6799 SCALE AS NOTED SPEC. 05-76-6799 SHEET 3 OF 5	
--	--	---	--

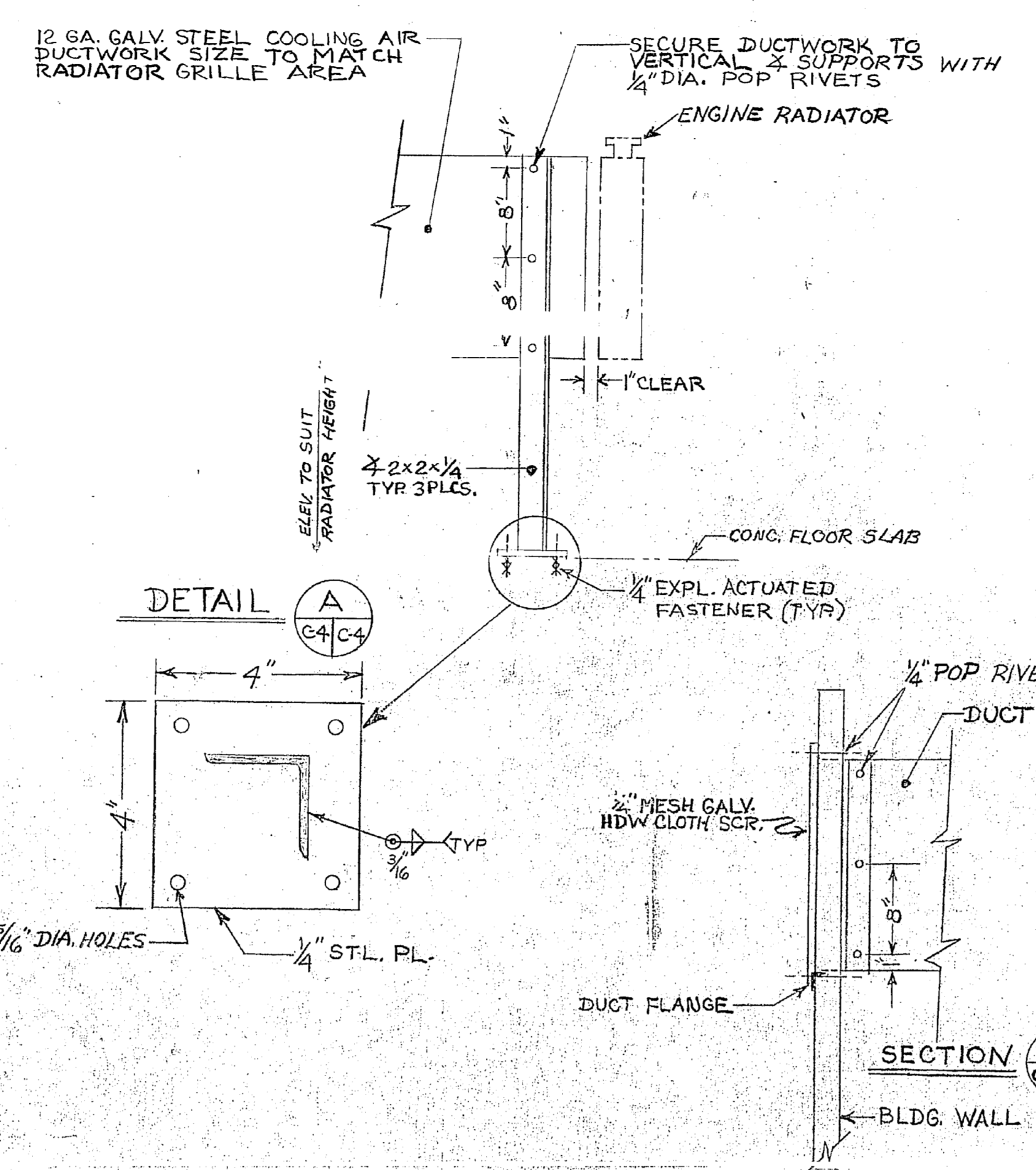




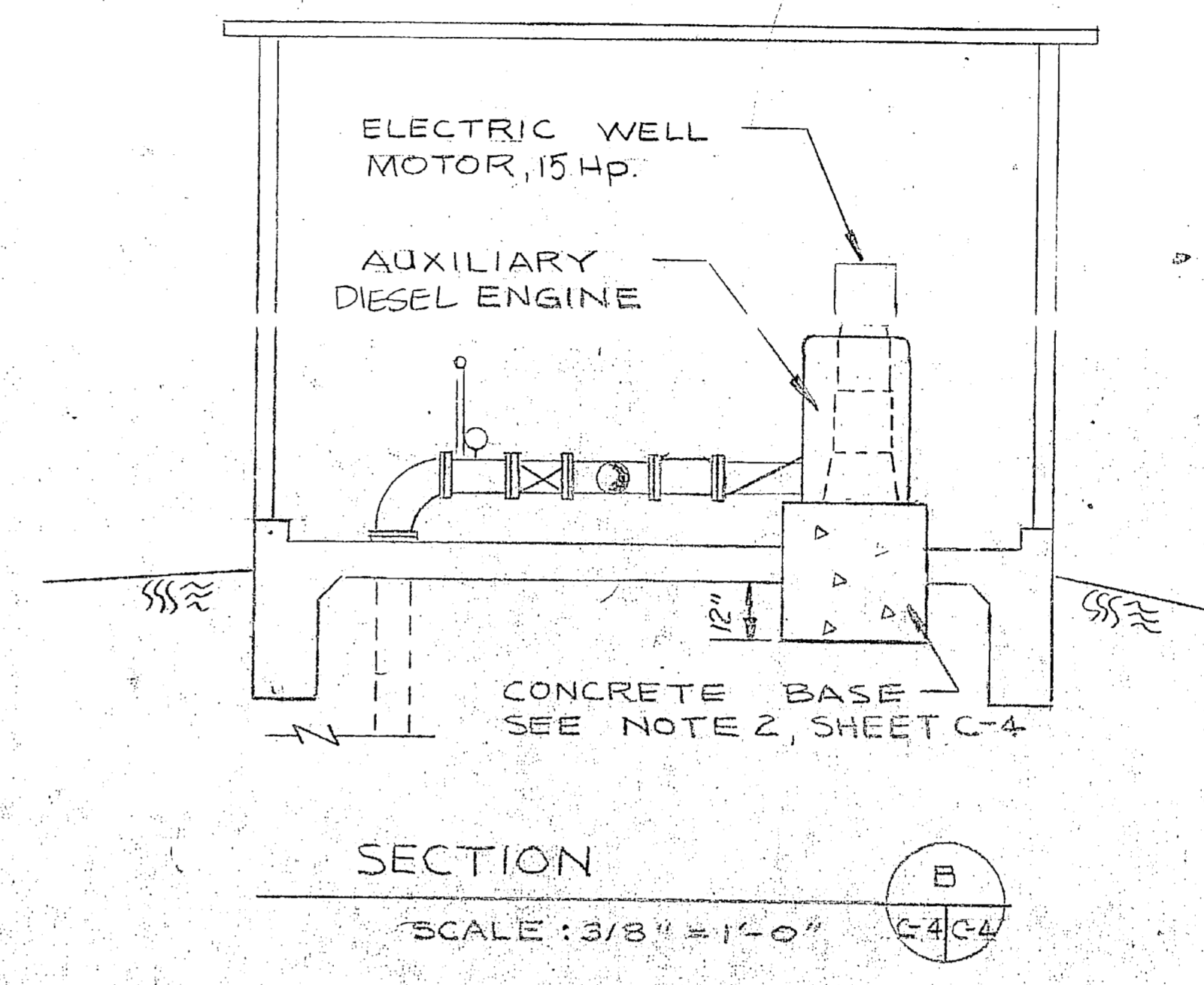




**PIPING PLAN**  
SCALE: 3/8" = 1'-0"



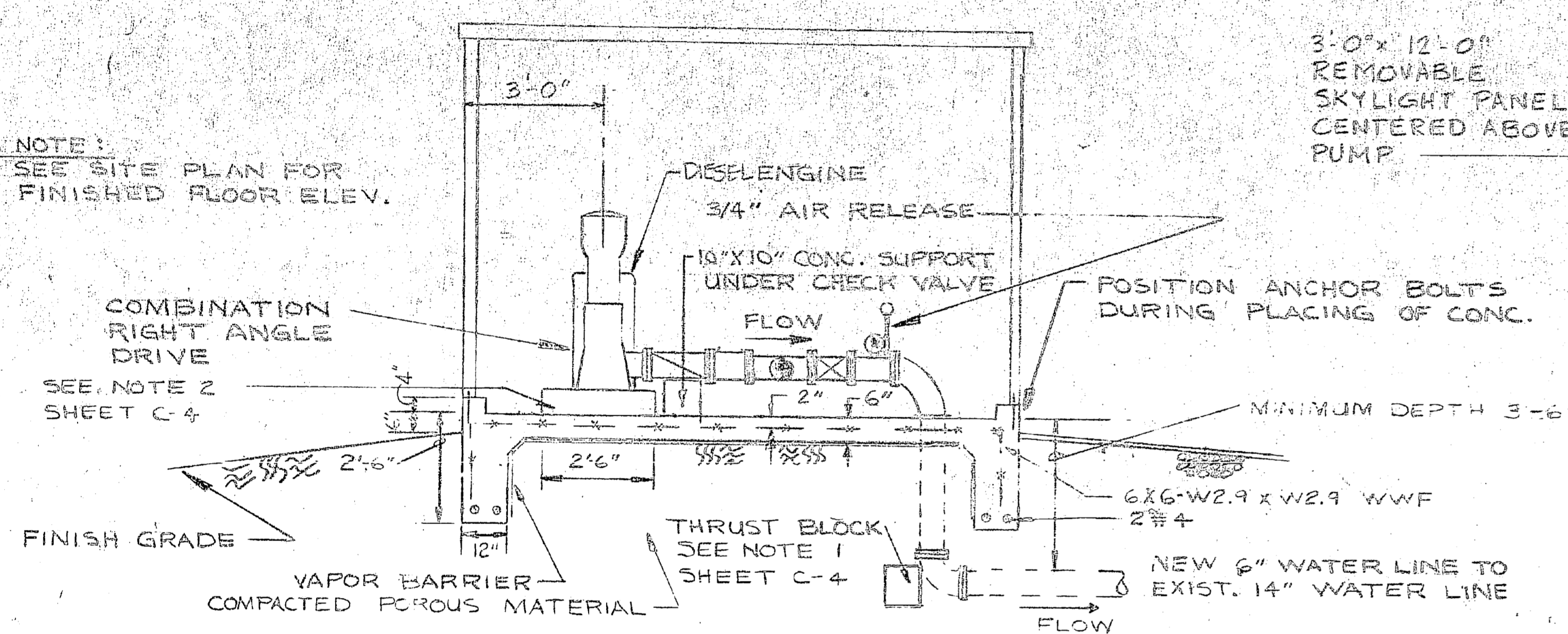
**DETAIL A**  
SCALE: 3/8" = 1'-0"



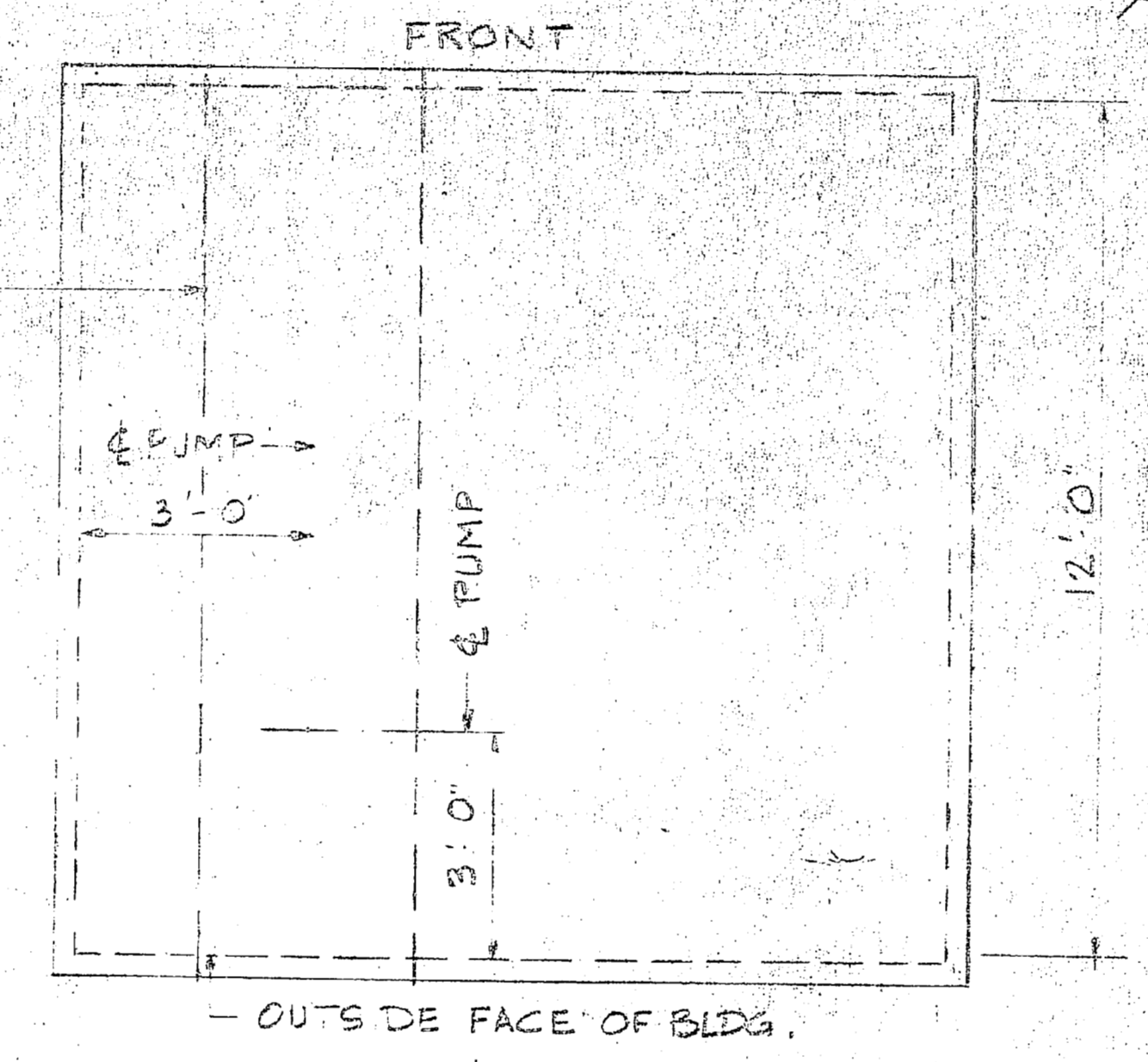
**SECTION B**  
SCALE: 3/8" = 1'-0"

REVISIONS		
NO.	DESCRIPTION	DATE

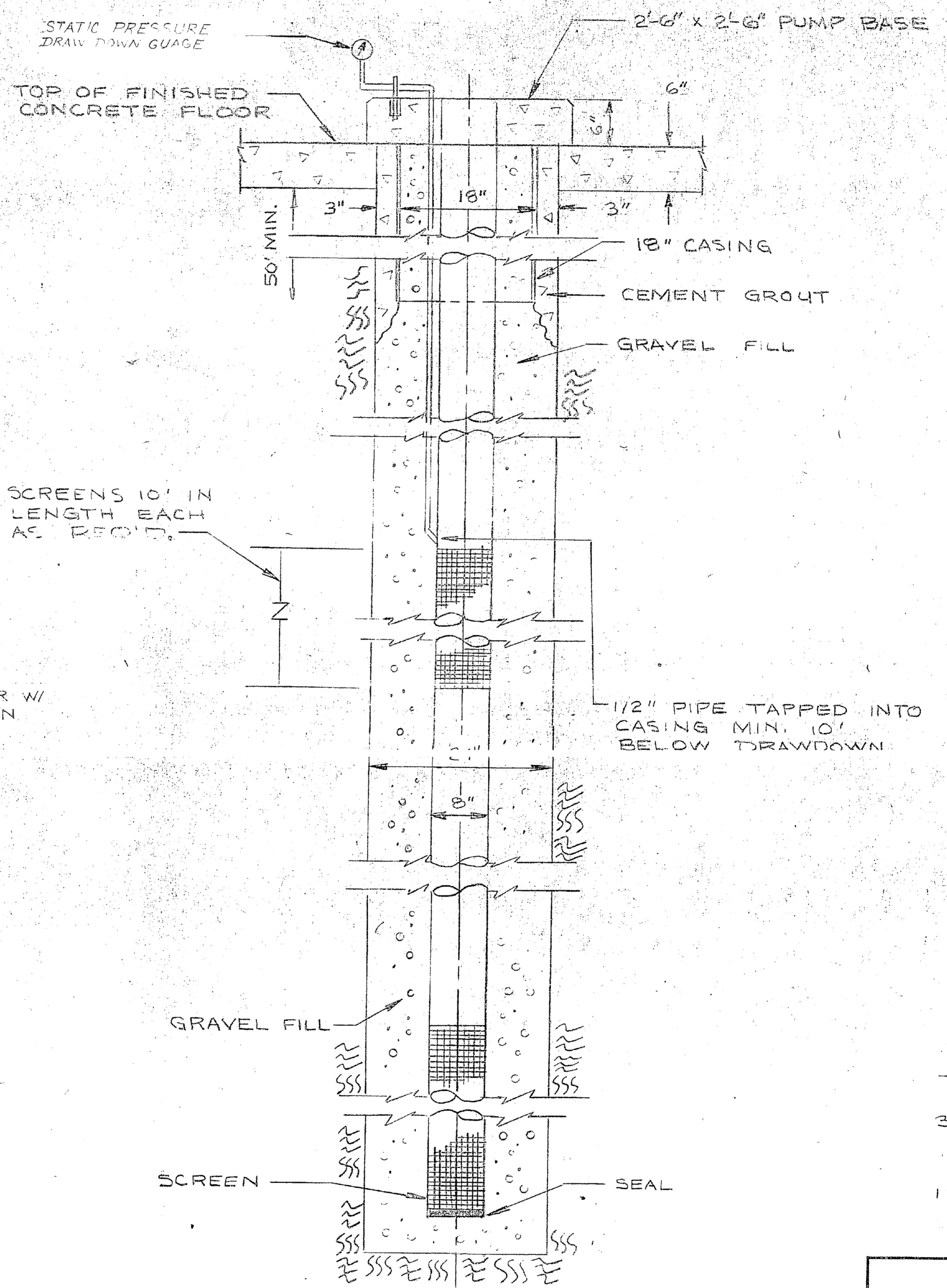
- NOTES**
- THRUST BLOCKS SHALL BE IN ACCORDANCE WITH LANDVY SPECIFICATION STANDARD PLATE WD-1.
  - CONCRETE BASES FOR MOTOR AND AUXILIARY GASOLINE ENGINE ARE SHOWN FOR BIDDING PURPOSES ONLY. CONTRACTOR SHALL PROVIDE SUITABLE BASE FOR EQUIPMENT.
  - PANELS SHALL BE SIMILAR IN CONFIGURATION TO BUTLER MANUFACTURING CO. TYPE M-36.
  - EXTERIOR & INTERIOR COLOR OF METAL PANELS SHALL BE SIMILAR TO BUTLER MANUFACTURING CO. - DESERT BEIGE.
  - ANCHOR BOLT LOCATION TO BE DETERMINED BY METAL BLDG. MANUFACTURER.
  - NEW WELL PUMPS SHALL HAVE A CAPACITY OF 250 GPM AT 150' TDH AT 1750 RPM WITH A 15 HP MOTOR. MOTOR IN WELLHOUSE 217 SHALL HAVE A RIGHT ANGLE DRIVE. DESIGN BASED ON 70' DRAWDOWN WITH 40 PSI AT DISCHARGE TO EXISTING MAIN RAW WATER LINES.
  - FRONT OF WELLHOUSE FACES STONE PARKING AREA.



**SECTION A**  
SCALE: 3/8" = 1'-0"



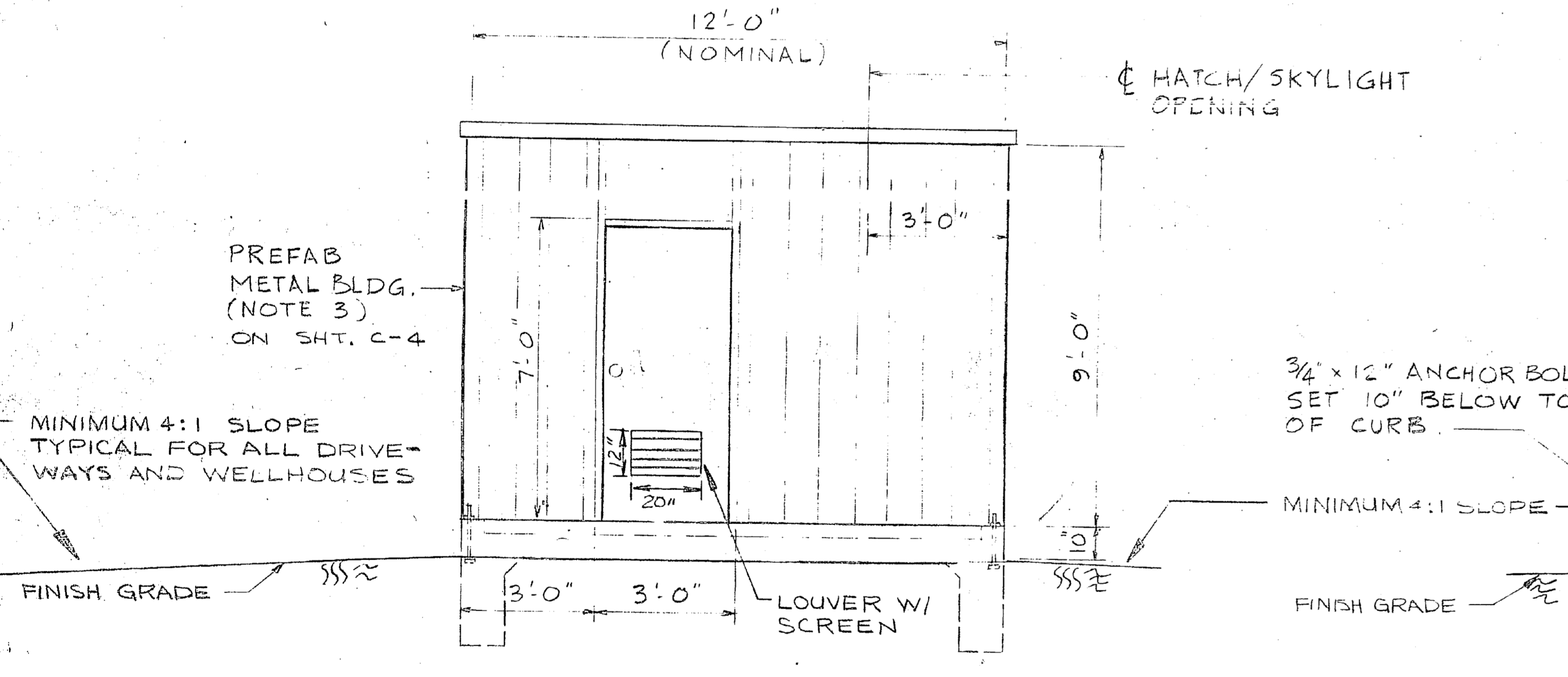
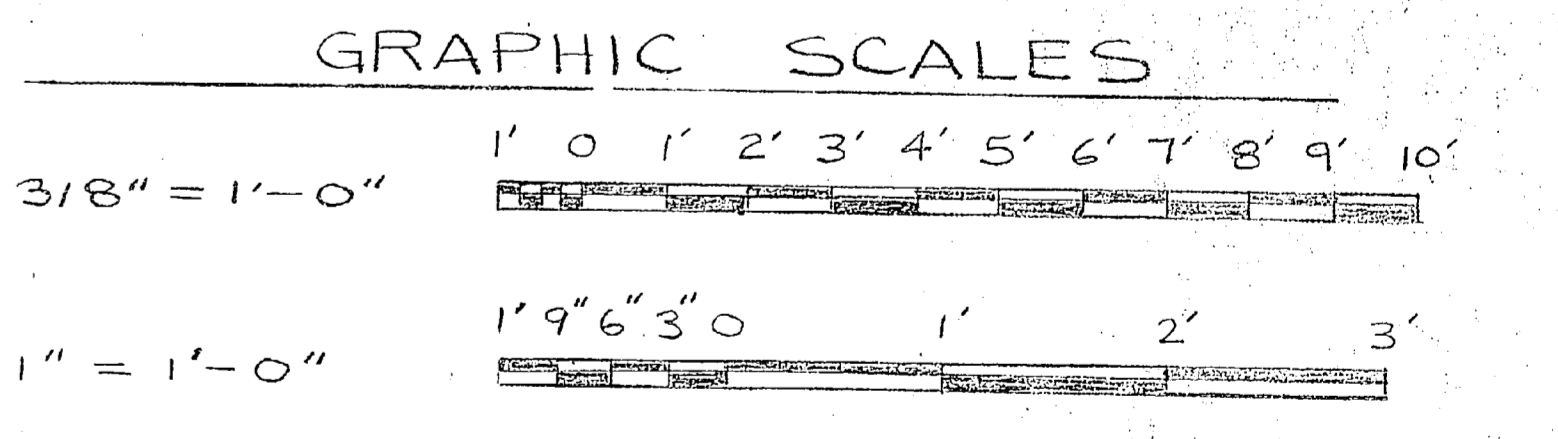
**FRONT ROOF PLAN**  
SCALE: 3/8" = 1'-0"



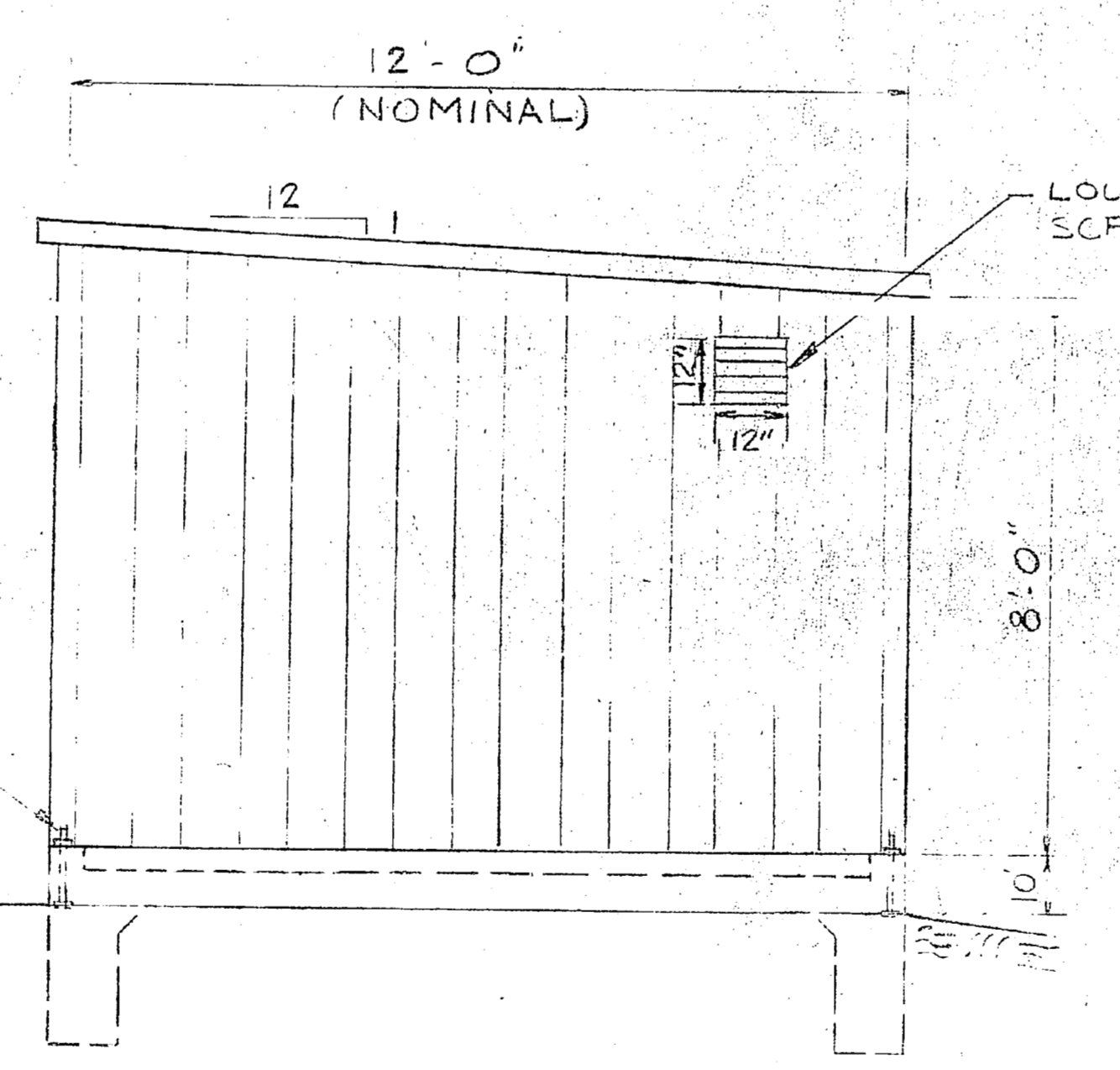
**TYPICAL GRAVEL PACKED WELL DETAIL**  
SCALE: 1" = 1'-0"

**DESIGN LOADS**

ROOF	20 PSF
FLOOR	100 PSF
WIND	115 MPH
SEISMIC	ZONE II



**FRONT ELEVATION**  
SCALE: 3/8" = 1'-0"



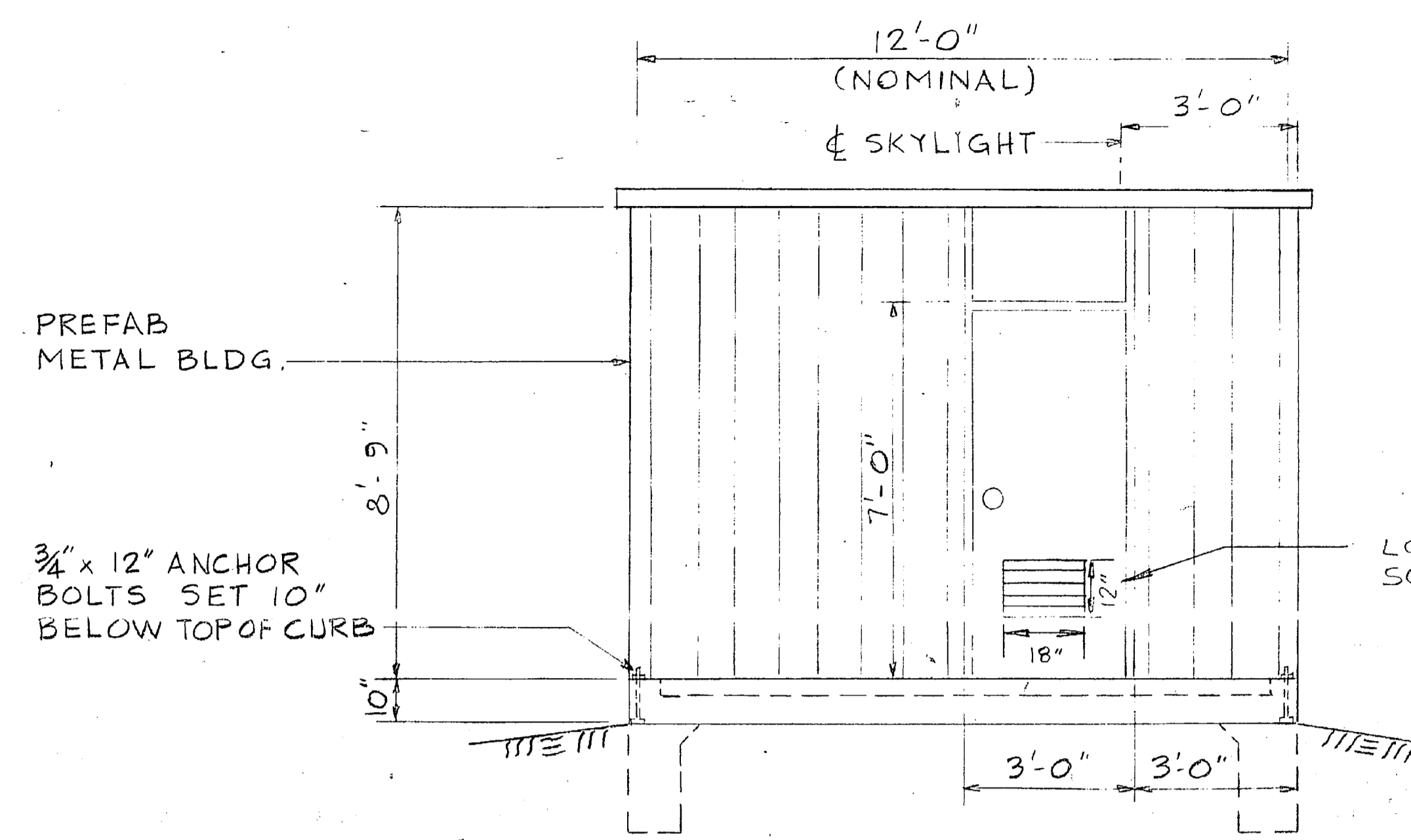
**RIGHT SIDE ELEVATION**  
SCALE: 3/8" = 1'-0"

NEW WELLHOUSE NO. 617

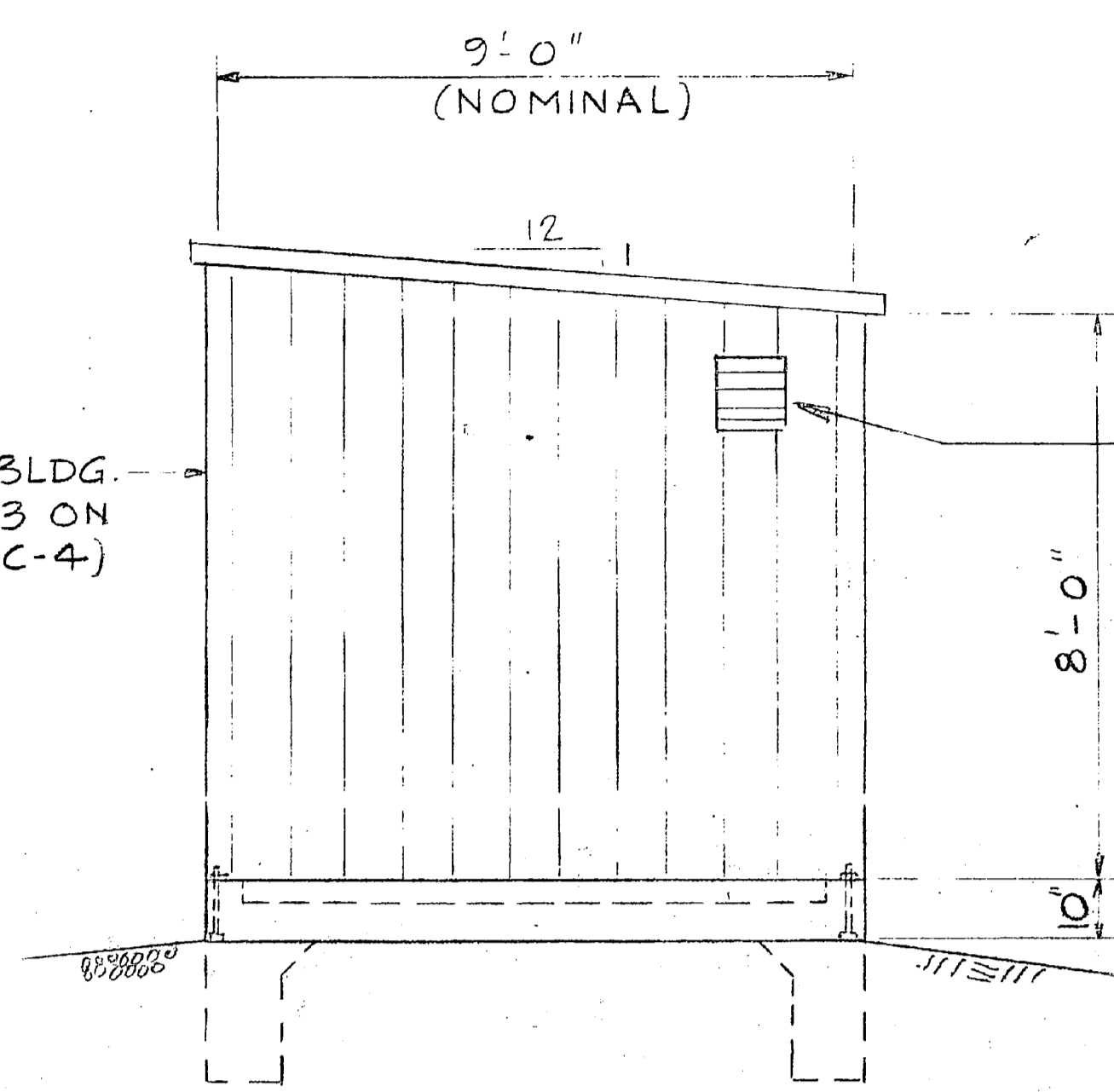
<b>C-4</b>	
EFG DWG. NO. 133405 JOB ORDER NO. 94856789 DES. MCCREARY DRWN. DIM TR. CHK. JPH. P. W. W. W. DES. DIR. H. L. DES. DIR. J. D. W. S. R. E. SATISFACTORY TO: [Signature] APPROVED: [Signature] DATE: [ ]	DEPARTMENT OF THE NAVY NAVAL FACILITIES ENGINEERING COMMAND ATLANTIC DIVISION NAVAL STATION NORFOLK, VA. U.S. MARINE CORPS BASE CAMP LEJEUNE, NORTH CAROLINA. REPLACE WATER WELLS WELLHOUSE DETAILS HONC 7302 SIZE: F CORE IDENT. NO.: 80091 NAVFAC DRAWING NO.: 4033405 CONSTR. CODE: N62470-76-B-C SCALE: AS NOTED APR. 05-76-6789 SHEET 4



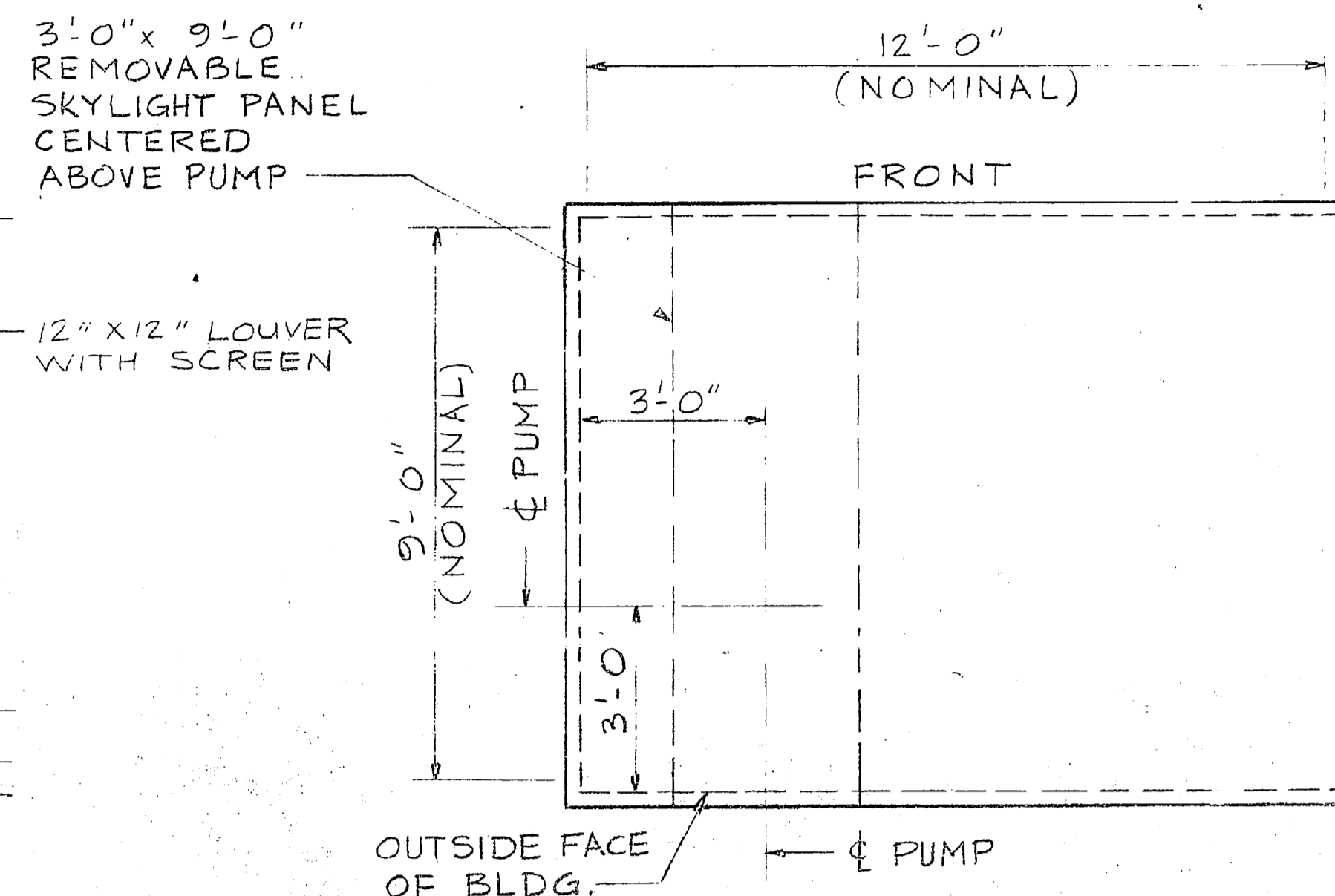




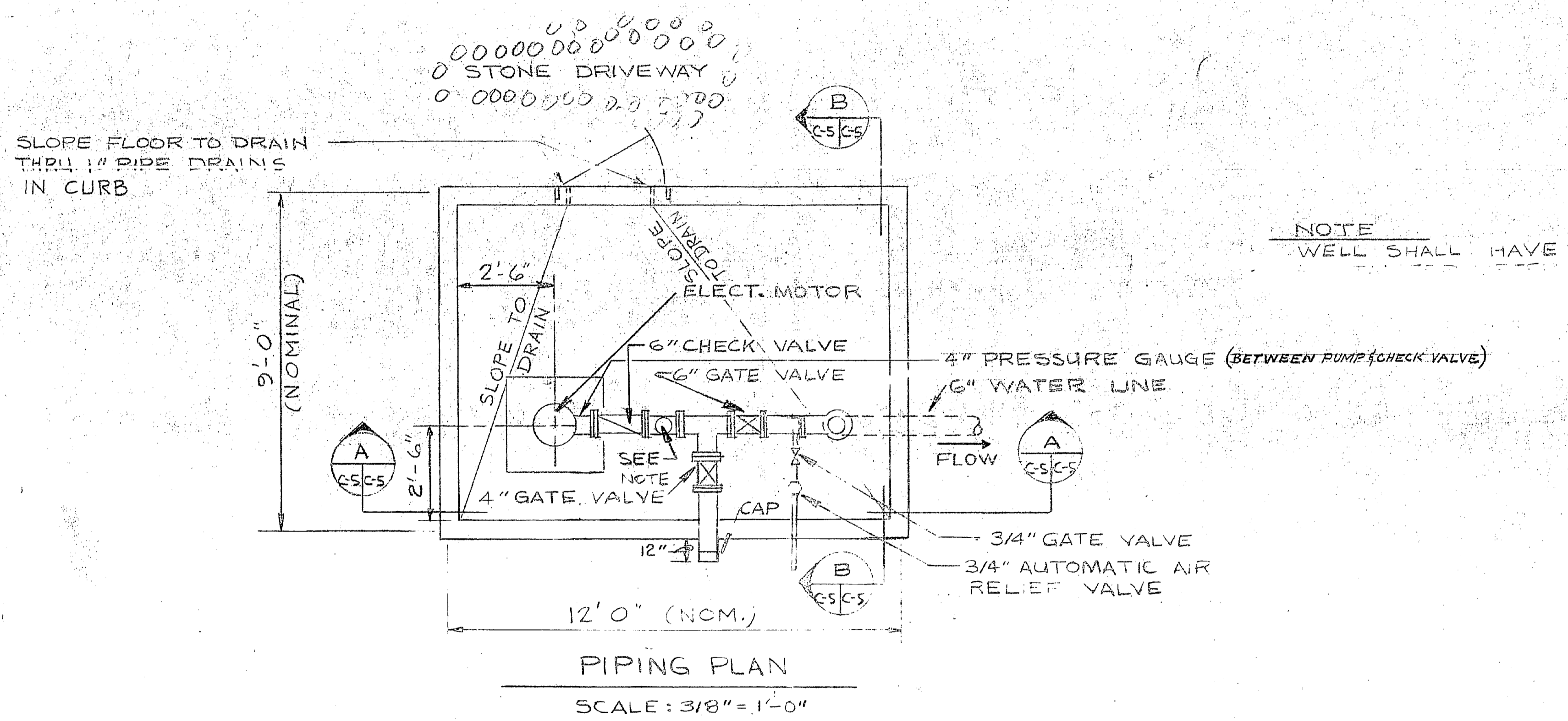
FRONT ELEVATION  
SCALE: 3/8" = 1'-0"



SIDE ELEVATION  
SCALE: 3/8" = 1'-0"



ROOF PLAN  
SCALE: 3/8" = 1'-0"



PIPING PLAN  
SCALE: 3/8" = 1'-0"

NOTE  
WELL SHALL HAVE

NOTE:  
SEE SITE PLAN FOR  
FINISHED FLOOR ELEV.

POSITION ANCHOR BOLTS  
DURING PLACING OF CONC.  
SEE NOTE 2, SHEET C-4

FINISH GRADE

VAPOR BARRIER  
COMPACTED POROUS MATERIAL  
THRUST BLOCK, SEE NOTE 1 SHEET C-4  
NEW 6" WATER TO EXIST. WATER LINE

SECTION A

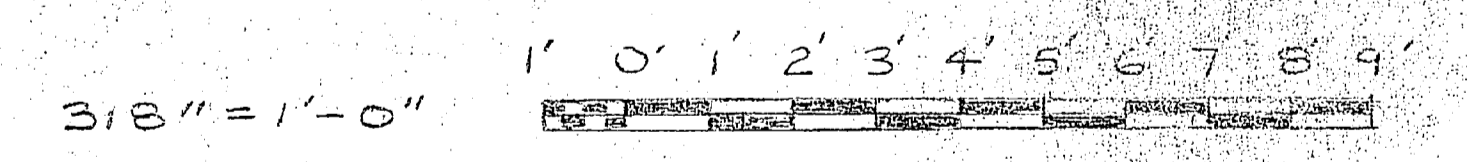
SCALE: 3/8" = 1'-0"

SECTION B

SCALE: 3/8" = 1'-0"

NEW WELLHOUSE NO. 619, BA-109, RR-46

GRAPHIC SCALES



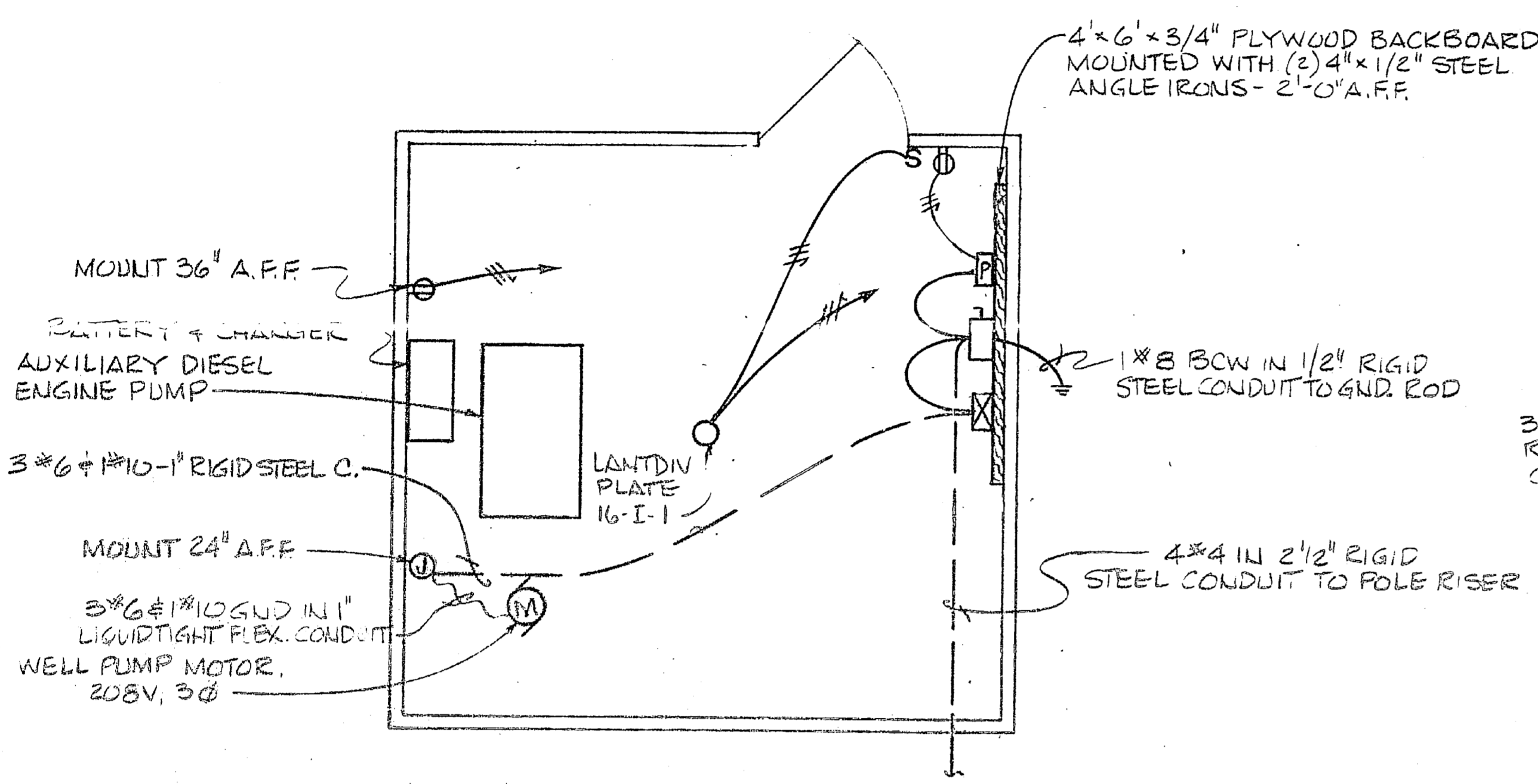
C-5

EFD DWG. NO. 133406		DEPARTMENT OF THE NAVY NAVAL FACILITIES ENGINEERING COMMAND	
JOB ORDER NO. 34906799		ATLANTIC DIVISION	
DES. MCCREADY	DRWN. DIM	NAVAL STATION	NORFOLK, VA.
TITLE	CHK. J.T.H.	U.S. MARINE	CAMP LEJEUNE,
DR. MGR. H.K.	DATE	CORPS BASE	NORTH CAROLINA
DES. DIR. J. DAVIS		REPLACE WATER WELLS	
SATISFACTORY TO		WELLHOUSE DETAILS	
APPROVED	DATE	SITE	4033406
		CODE IDENT. NO.	HOME 7302
		CONSTR. CODE. NO.	N62410-76-B-C753
FOR EFD FOR COMMANDER NAVFAC		SCALE AS NOTED	SPEC. 05-76-6799 SHEET 5 OF 5

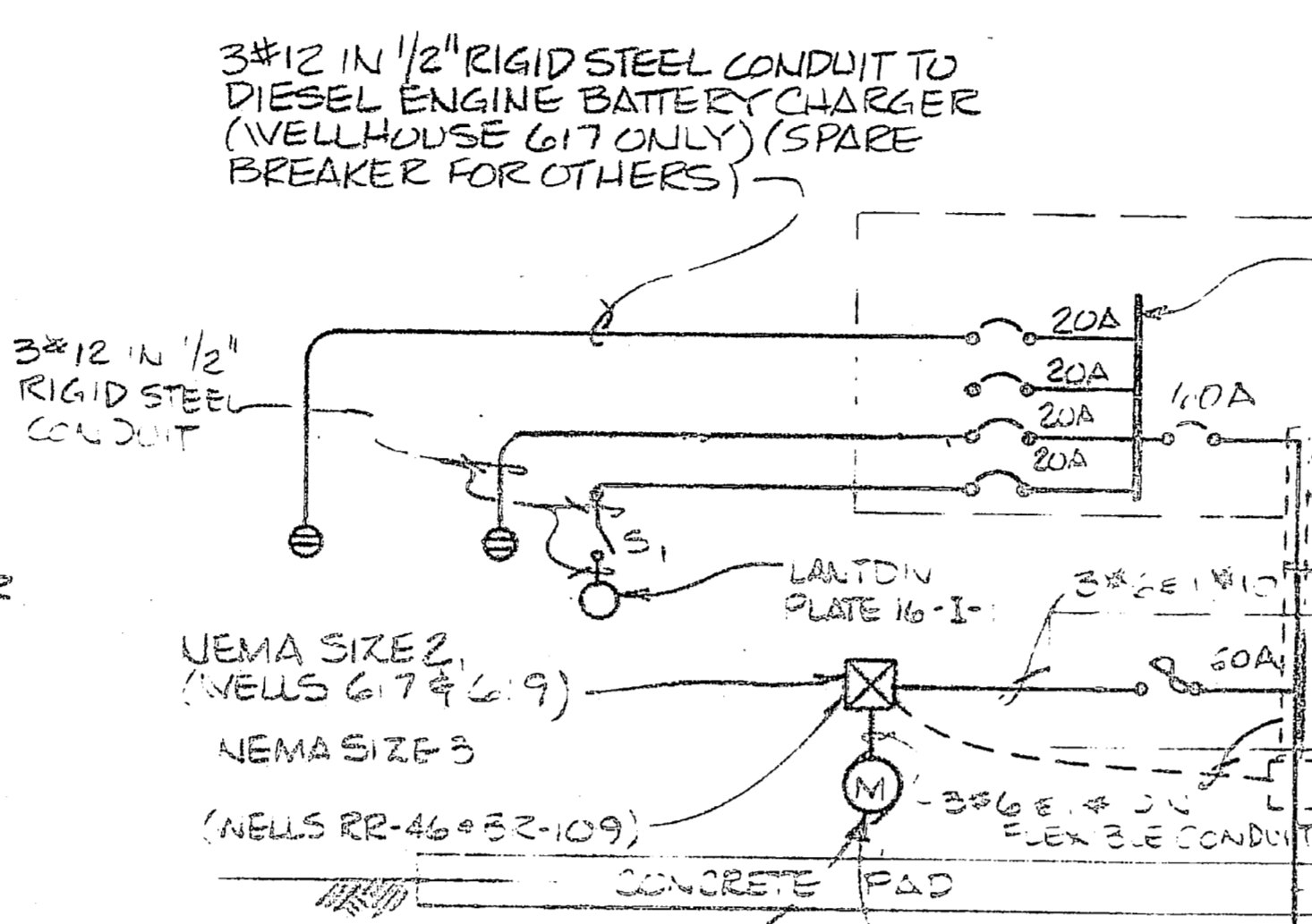




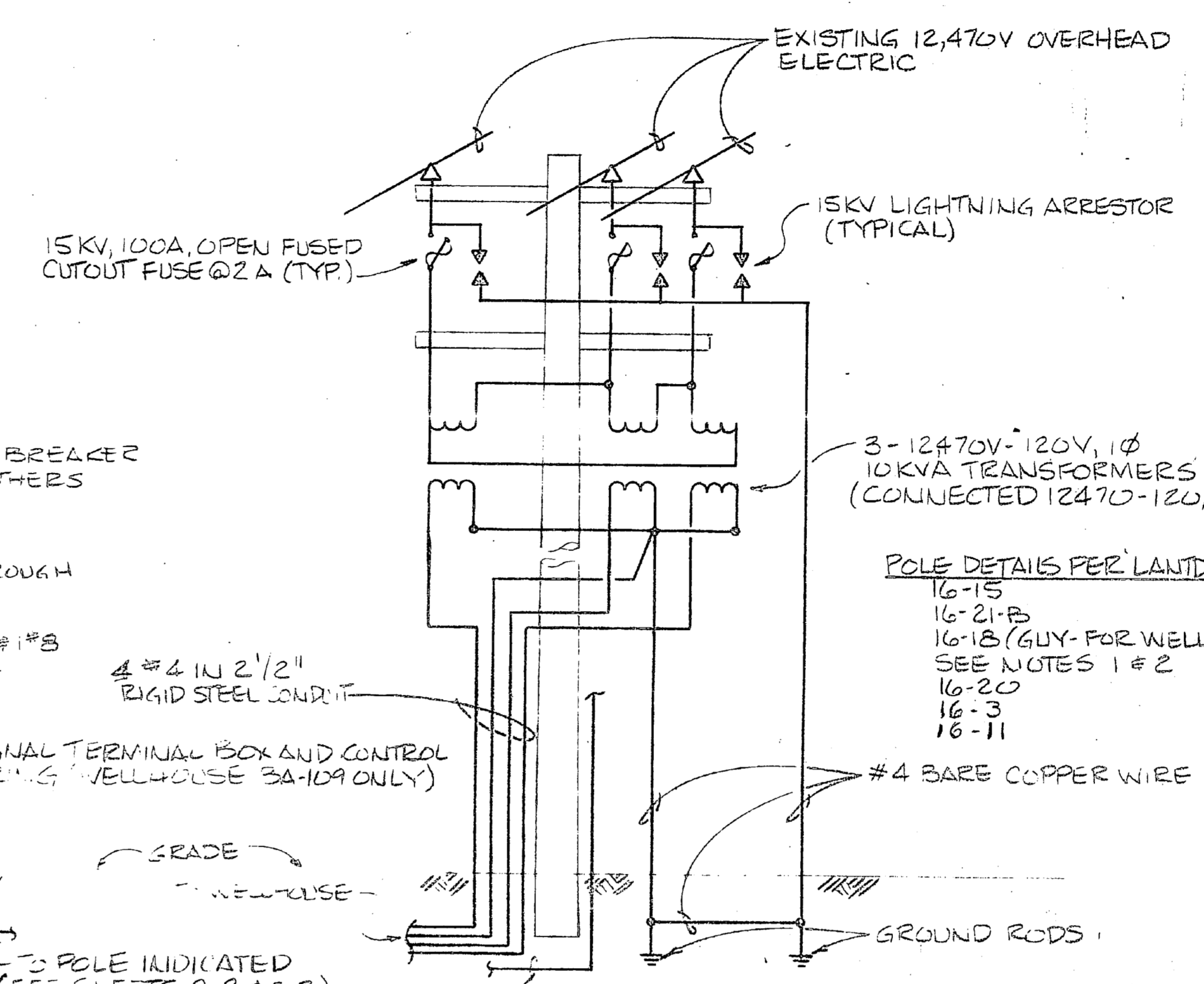
REV.	DESCRIPTION



**FLOOR PLAN**  
WELLHOUSE #617 ONLY  
SCALE: 3/8"=1'-0"



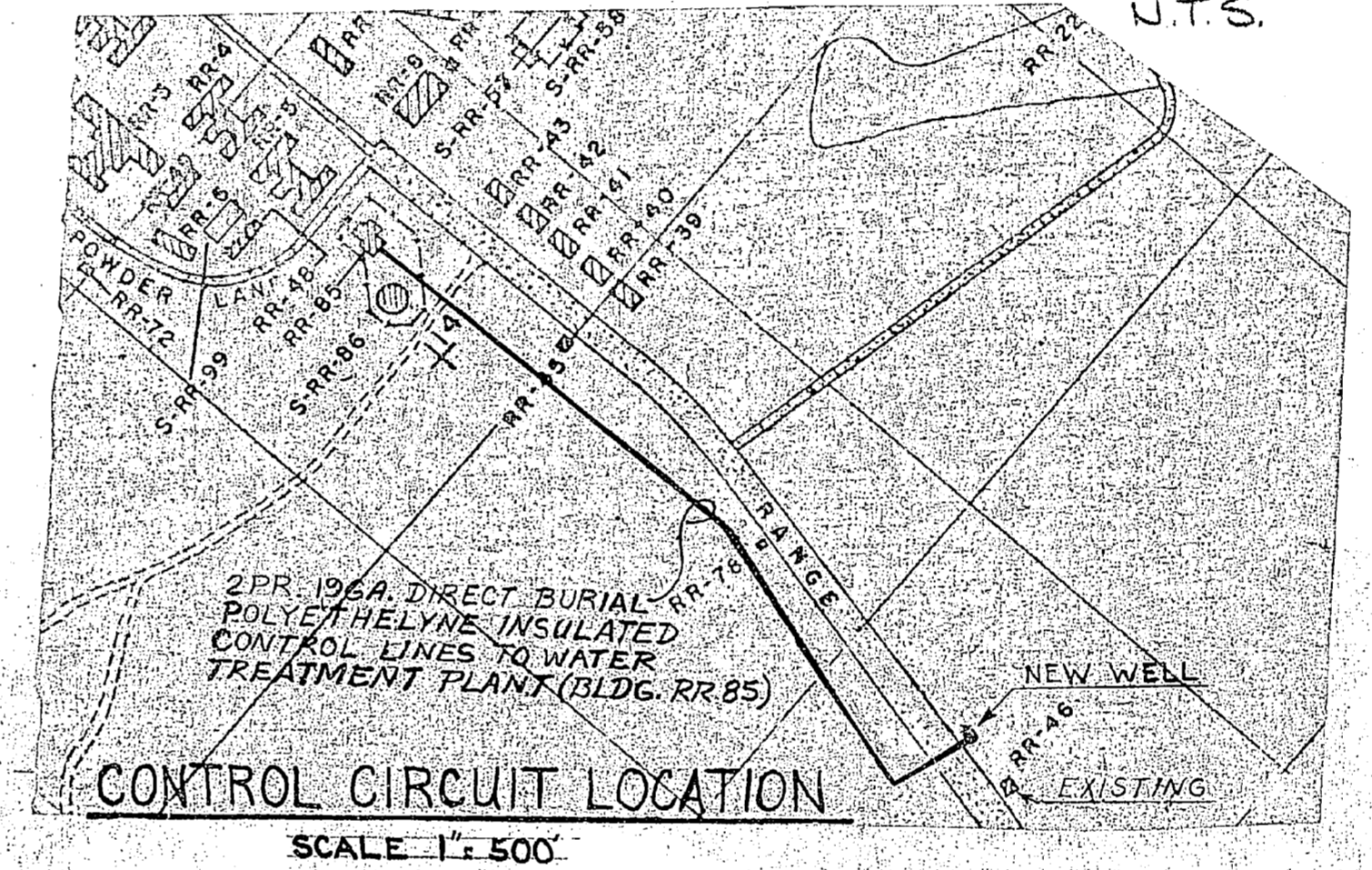
**ONE-LINE DIAGRAM**  
N.T.S.



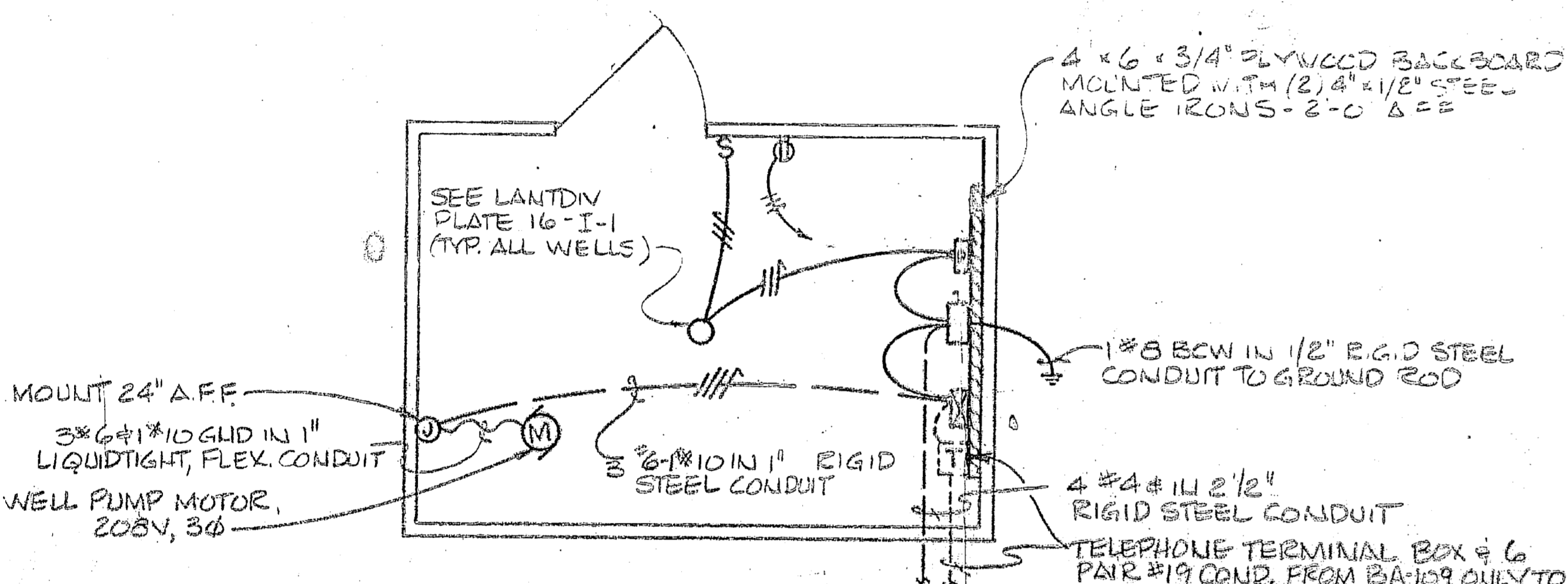
- NOTES:**
- 1- SAME AS LANTINV PLATE 16-15 EXCEPT OMIT SECONDARY SPOOLS.
  - 2- SAME AS LANTINV PLATE 16-21, EXCEPT ADD SECONDARY WIRES.
  - 3- ALL ITEMS SHOWN ARE NEW UNLESS OTHERWISE NOTED.

**POLE DETAIL I**  
2 NEW POLES # EXISTING POLE # 52-18

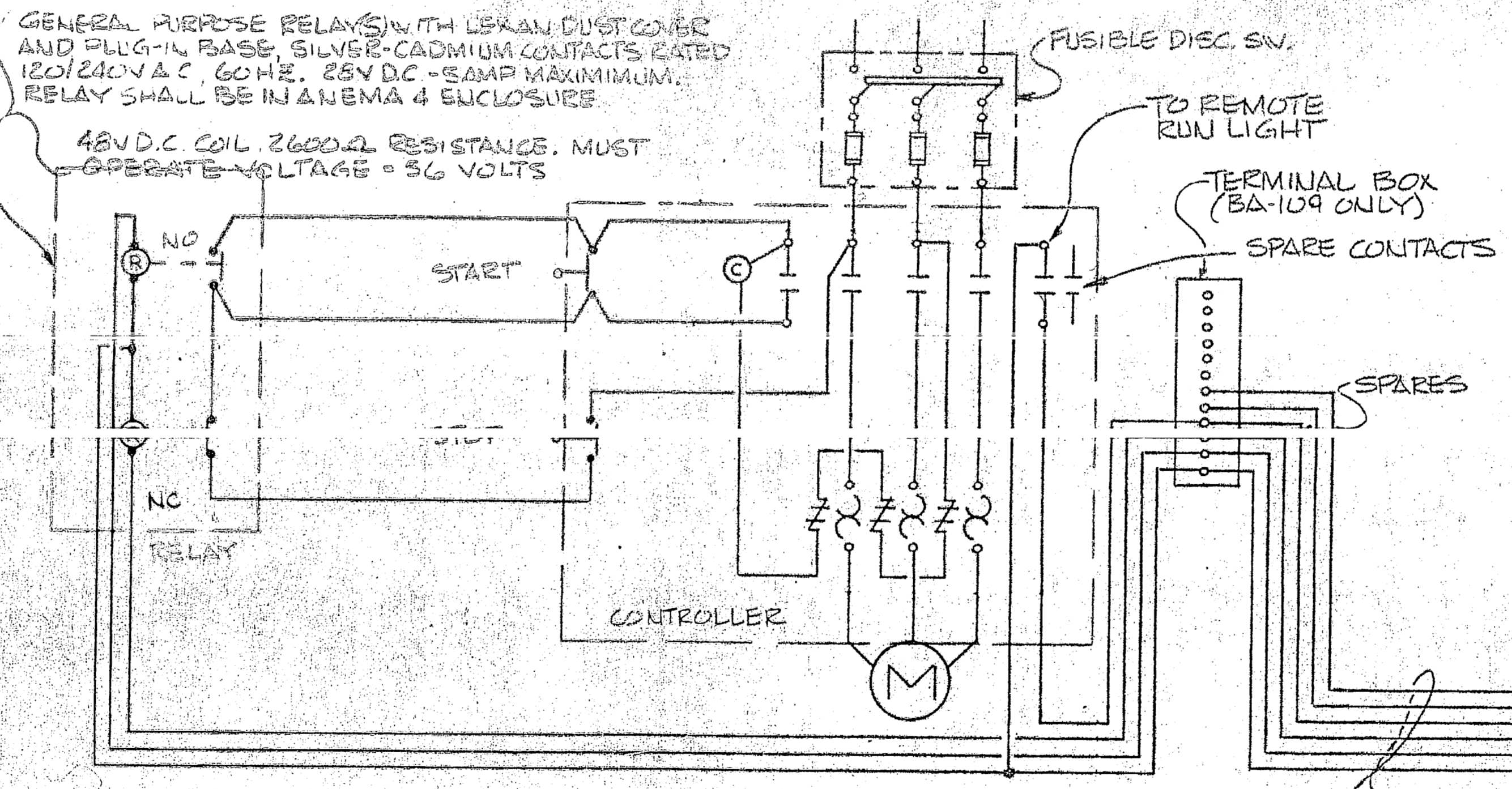
**POLE DETAIL II**  
SAME AS DETAIL I, EXCEPT ADD HEAD GUY, ANCHOR AND BACK-ARM PER POLE PLAN.



**CONTROL CIRCUIT LOCATION**  
SCALE: 1"=500'



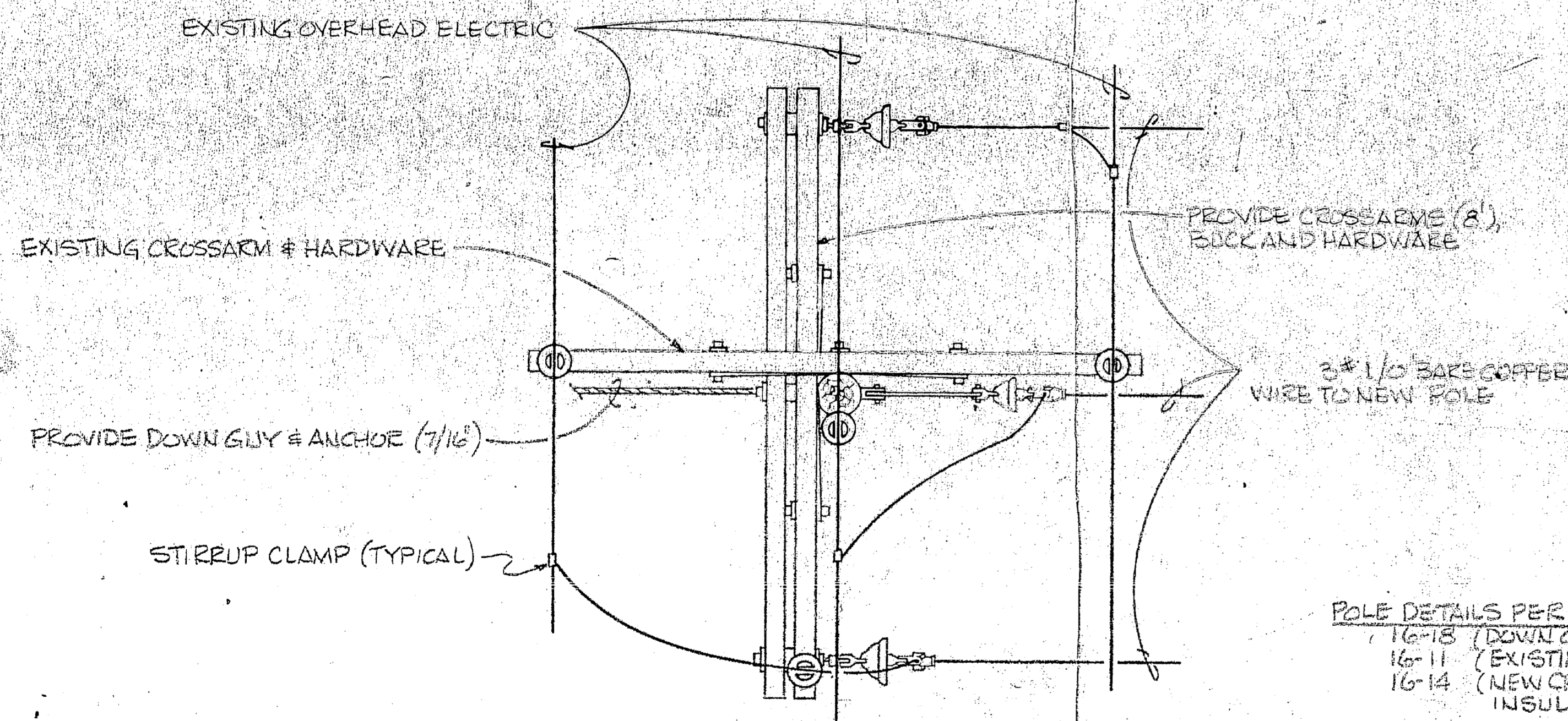
**FLOOR PLAN**  
WELLHOUSES #619, BA-109, # RE-46  
SCALE: 3/8"=1'-0"



**CONTROL SCHEMATIC - WELLHOUSE BA-109 ONLY**  
N.T.S.

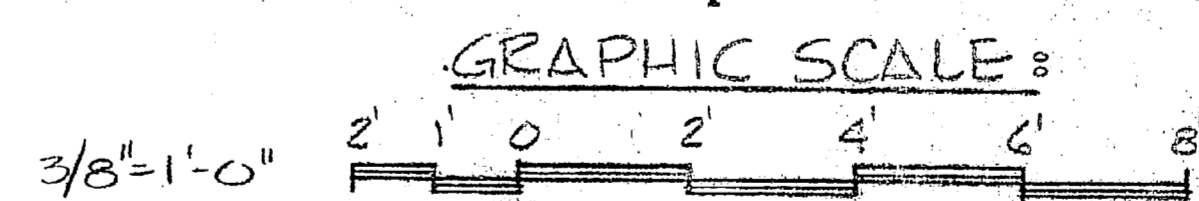
- LEGEND**
- INCANDESCENT LIGHT FIXTURE (LANTINV PLATE 16-I-1) - CEILING MOUNTED
  - ⊕ DUPLEX RECEPTACLE, 120V, 20A, GROUND TYPE (WEATHERPROOF)
  - ⊙ MOTOR CONNECTION
  - ⊕ JUNCTION BOX
  - ⊕ DISCONNECT SWITCH, 3P, S/N (3 FUSES # NEUTRAL) NEMA 4 BOX FUSED AT 60 AMPS
  - ⊕ STARTER, A.C. MAGNETIC, LINE VOLTAGE START, 3φ, 208V SIZED AS NOTED, NEMA 4 BOX
  - S TOGGLE SWITCH, 20A, 125V, IN CAST WEATHERPROOF BOX

- CONDUIT RUN EXPOSED
- CONDUIT RUN IN FLOOR, CONCEALED. TICK MARKS DENOTE NO. OF WIRES. (A) DENOTES GROUND. ALL WIRES SHALL BE #12 UNLESS OTHERWISE NOTED.
- A.F.F. ABOVE FINISH FLOOR
- ⊕ ELECTRIC PANEL, 240V, 3 φ, 4 WIRE 40A M.C.B., 30CIT, 4-20A 1PCB, 4 SPACES



**POLE PLAN**  
EXISTING POLE  
N.T.S.

- POLE DETAILS PER LANTINV PLATES:**
- 16-15 (DOWN GUY ANCHOR)
  - 16-11 (EXISTING CONDITIONS)
  - 16-14 (NEW CROSSARMS & INSULATORS)



EFD OWO. NO. 133407 JOB ORDER NO. 949D6799 DES. W.T. MCGRAW DRWN. A.A.B. TR. CHK. L.E. WINS, FRUITMAN PR. WISE, WINS, FRUITMAN DES. DIR. A. DAVIS, P.S. SATISFACTORY TO: [Signature] APPROVED: [Signature] DATE: [ ]	DEPARTMENT OF THE NAVY NAVAL FACILITIES ENGINEERING COMMAND ATLANTIC DIVISION NAVAL STATION U.S. MARINE CORPS BASE CAMP LEJEUNE NORTH CAROLINA REPLACE WATER WELLS PLANS AND DETAILS NMMC 7302 SIZE: 80091 CODE OWO. NO. 4033407 COUSAL CONTROL NO. UG2470-76-B-6799 SCALE NOTED: 1"=6'-0" SHEET: 6
---	--



