

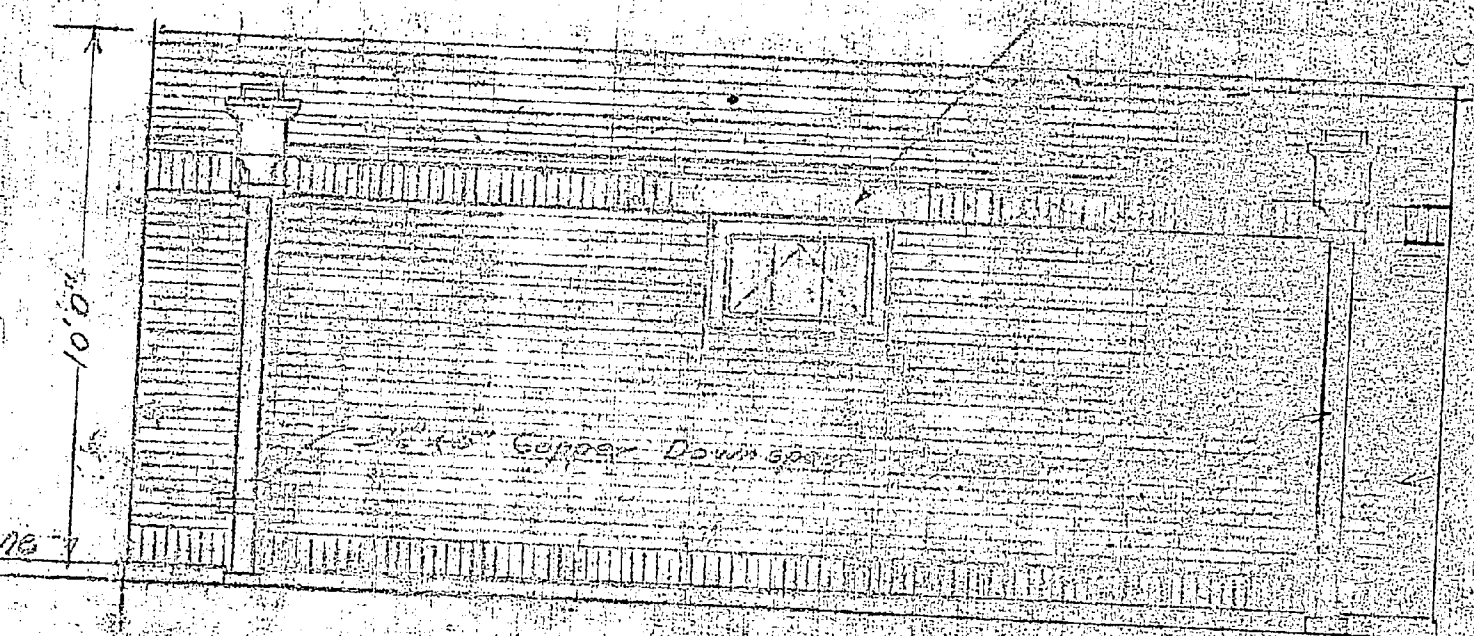
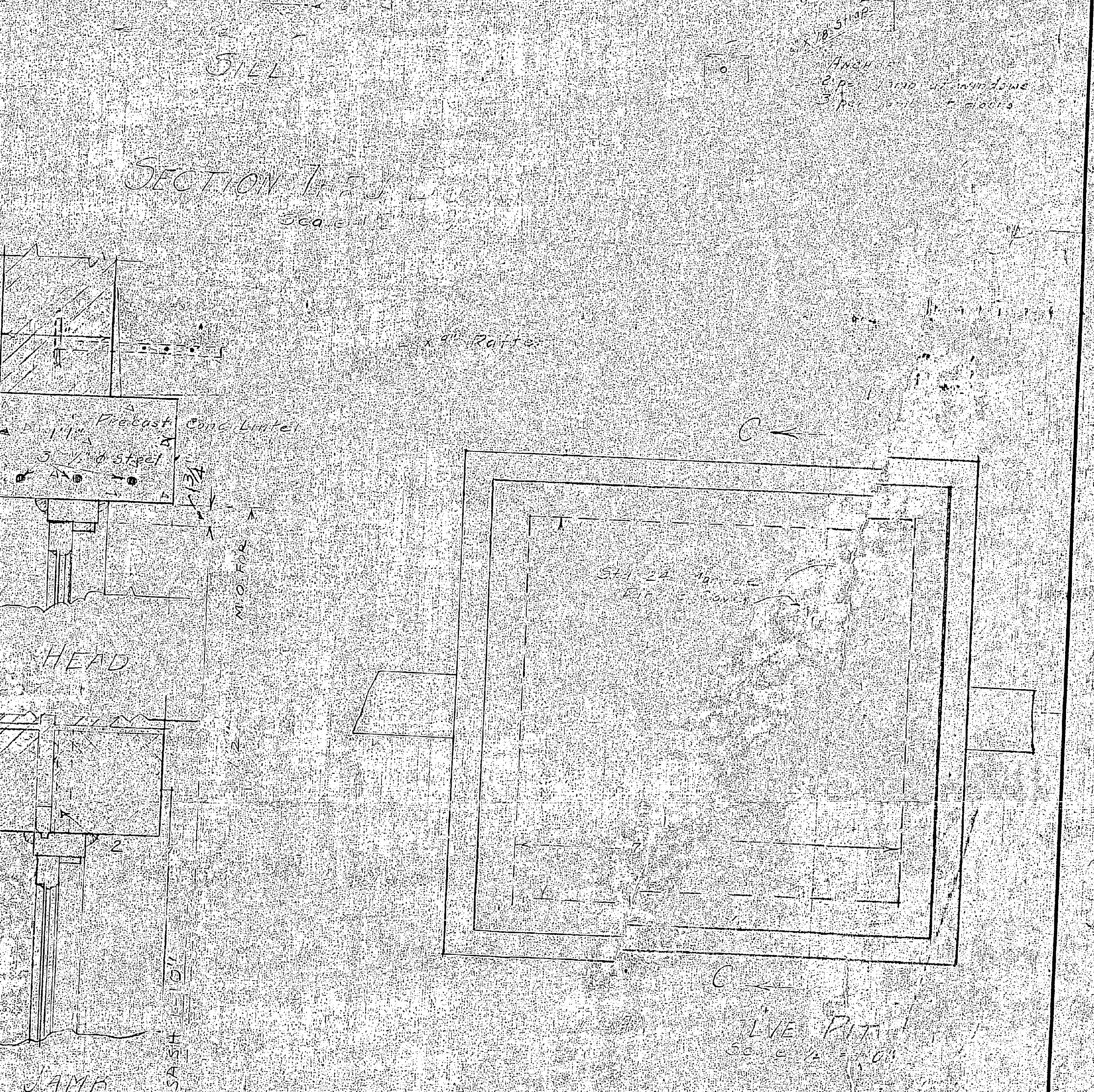
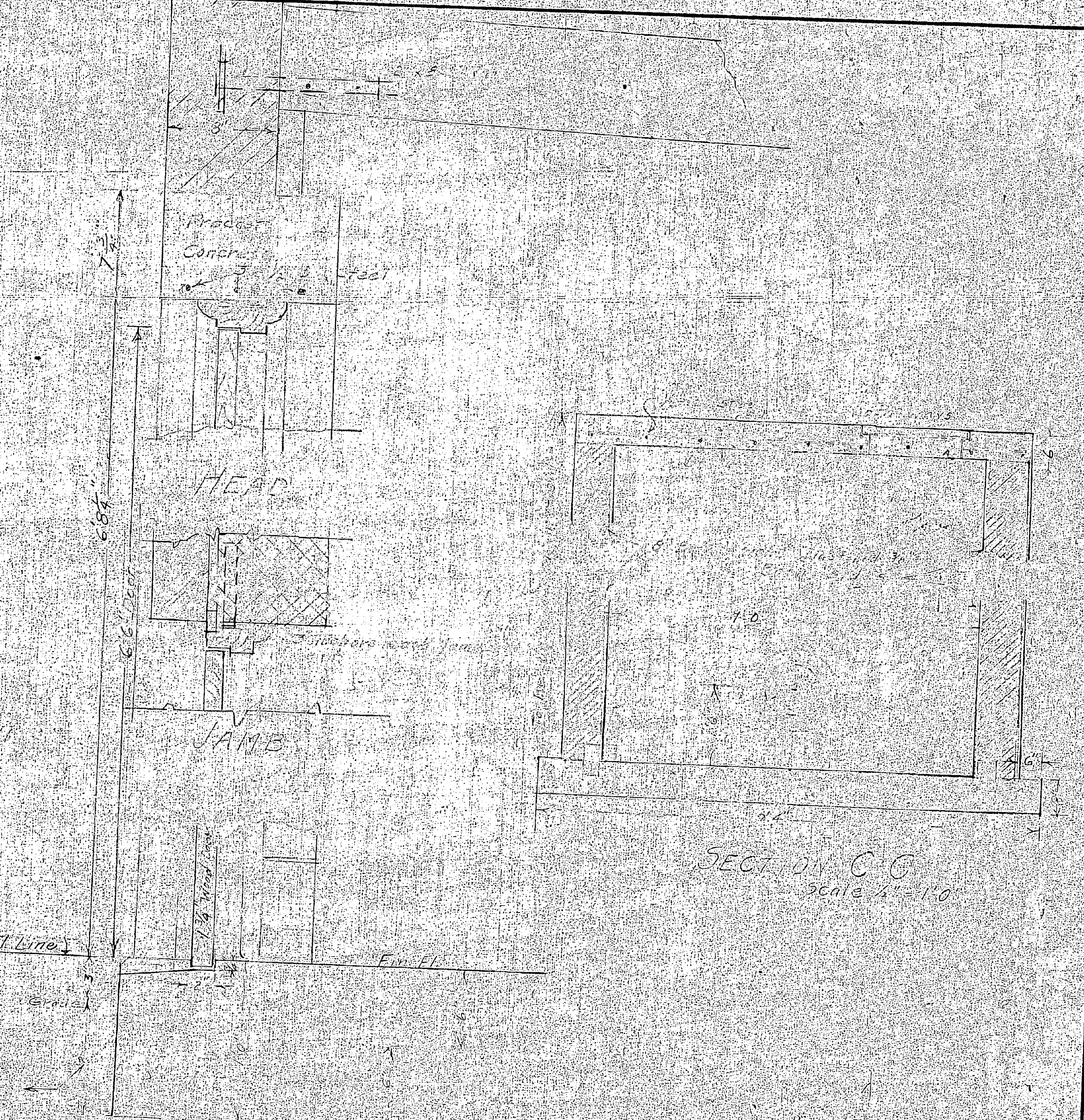
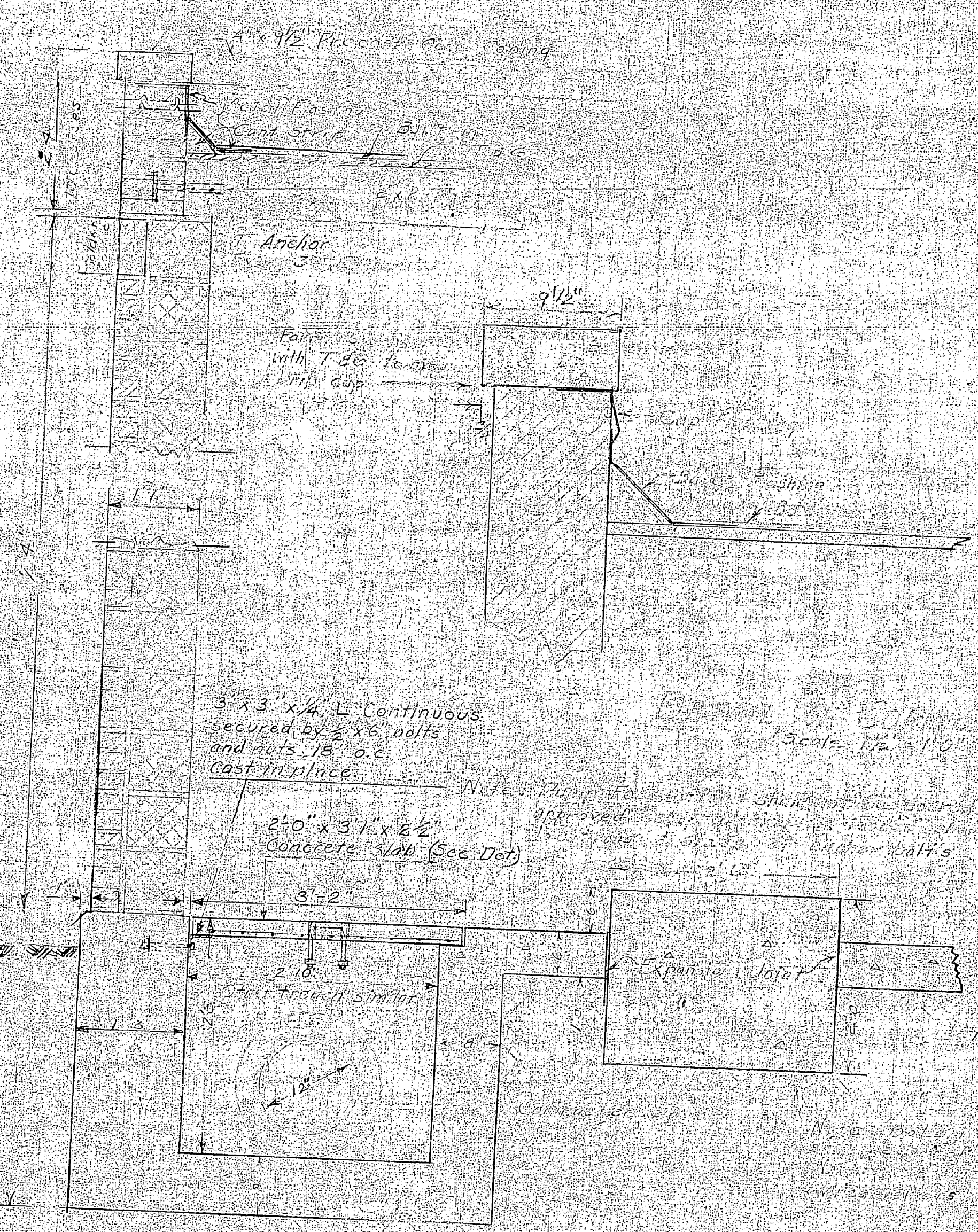
The contractor shall provide and install a horizontal centrifugal pump complete in every respect. Pump shall have characteristics as follows when the suction head is 100 feet (100'):

Head feet	Total head in system	BHP	Efficiency
600	68'	17.4	82%
700	78'	17.0	81%
800	88'	16.6	80%
900	98'	16.1	79%
1000	108'	15.6	78%

Pump shall be direct connected electric motor driven, 208 V-300y-30, with a

DETAIL OF CONCRETE SLAB COVERS FOR PIPE TRENCHES  
SCALE 1/4" = 1'-0"

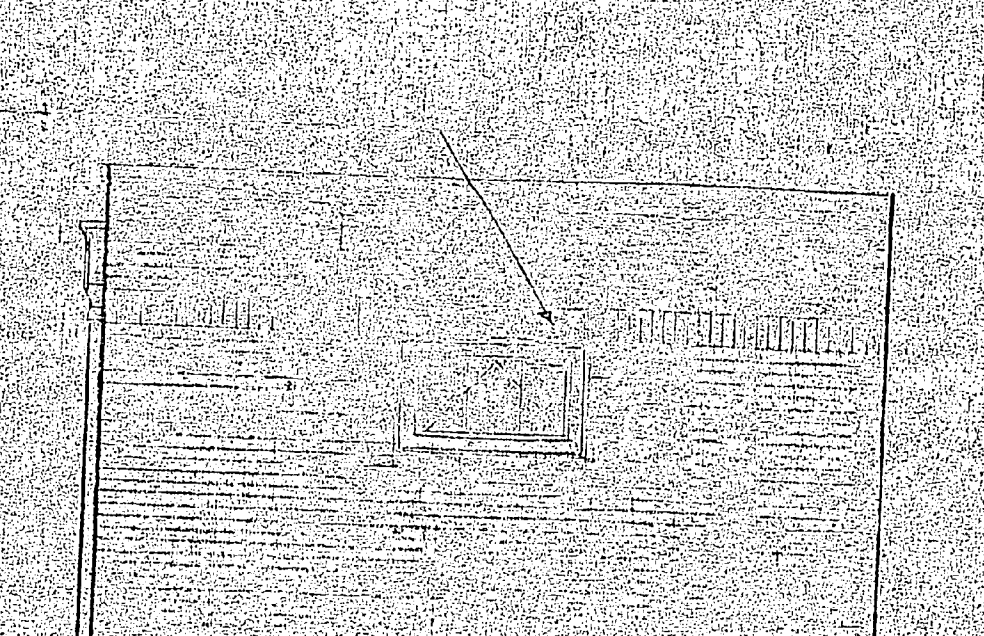
NOTE: Precast reinforced concrete slabs 3' x 12' x 2" and 2' x 12' x 2" to fit 6" pipe brackets. Allow 1/2" clearance each side and 1/4" clearance between slabs as laid. Fabricate & fitting handles for each slab from 1/2" x 1/4" rods. Threaded each end to receive cut washers and nuts. Wrap handles with paper and cast in place. When slabs are removed from forms drive handles loose and wrap threaded ends to secure nuts.



FRONT ELEVATION



REAR ELEVATION



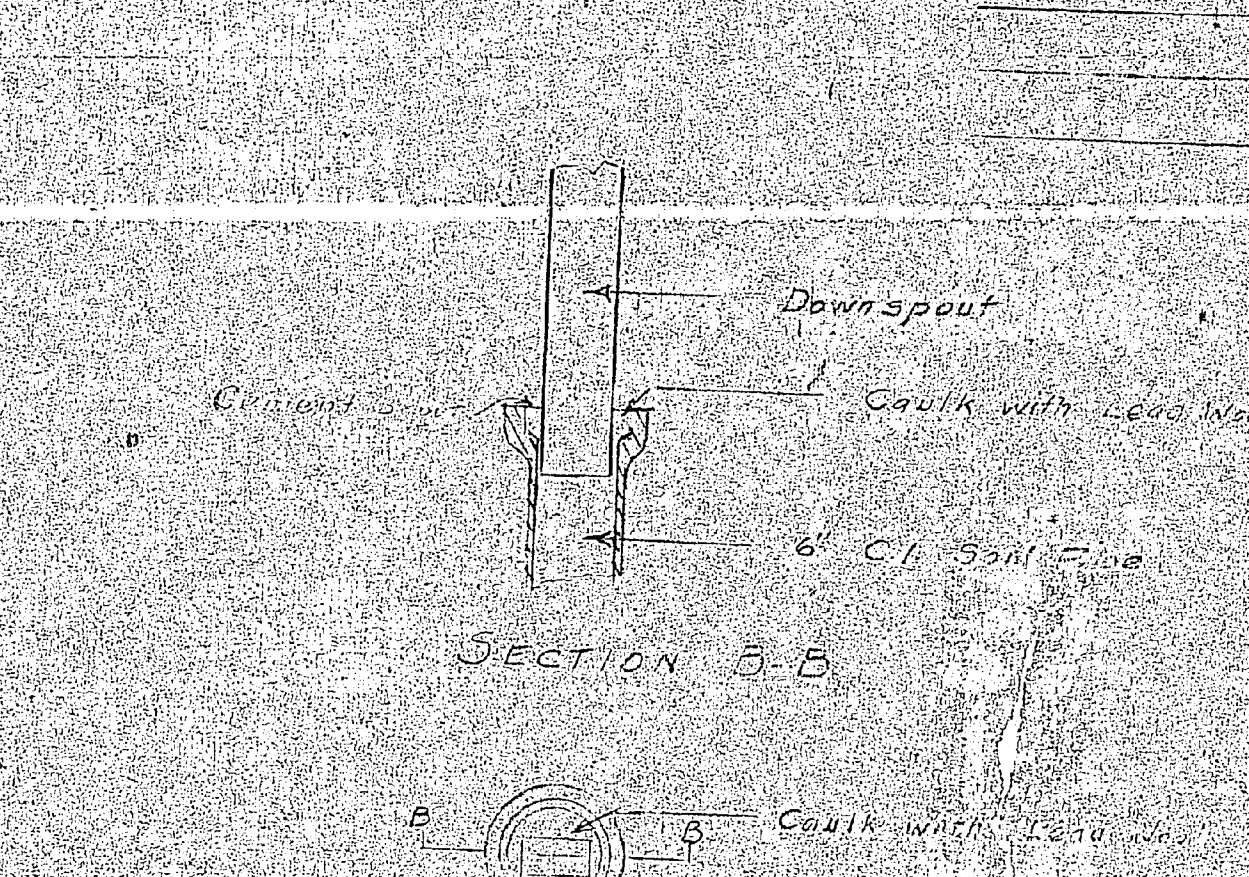
ELEVATION



SIDE ELEVATION

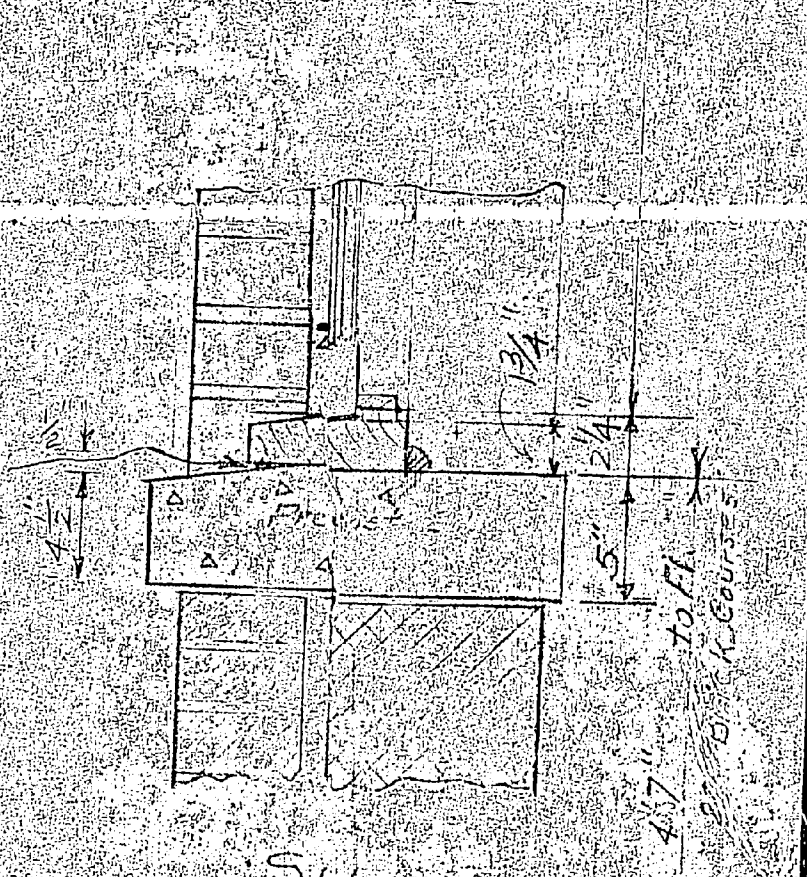


PLAN OF BUILDING



SECTION B-B

SCHEMATIC DRAINAGE DIAGRAM



TYPICAL WINDOW SECTIONS

REV.	BY	DATE	BRIEF	P.W.D.

APPROVED  
THE QUARTERMASTER GENERAL OF THE U.S. MARINE CORPS

DRAWN BY: LAVILLE  
CHECKED BY: THOMAS  
DESIGNED BY: BILLYE  
CHECKED BY: BILLYE  
IN CHARGE: E.S. COMBALS  
SCALE AS SHOWN

PUBLIC WORKS DEPARTMENT  
CAMP LEJEUNE — NORTH CAROLINA  
ADDITION TO WATER TREATMENT PLANT  
DIVISION TRAINING AREA  
BOOSTER PUMPING STATION  
ARCHITECTURAL AND MECHANICAL PLAN

04829



