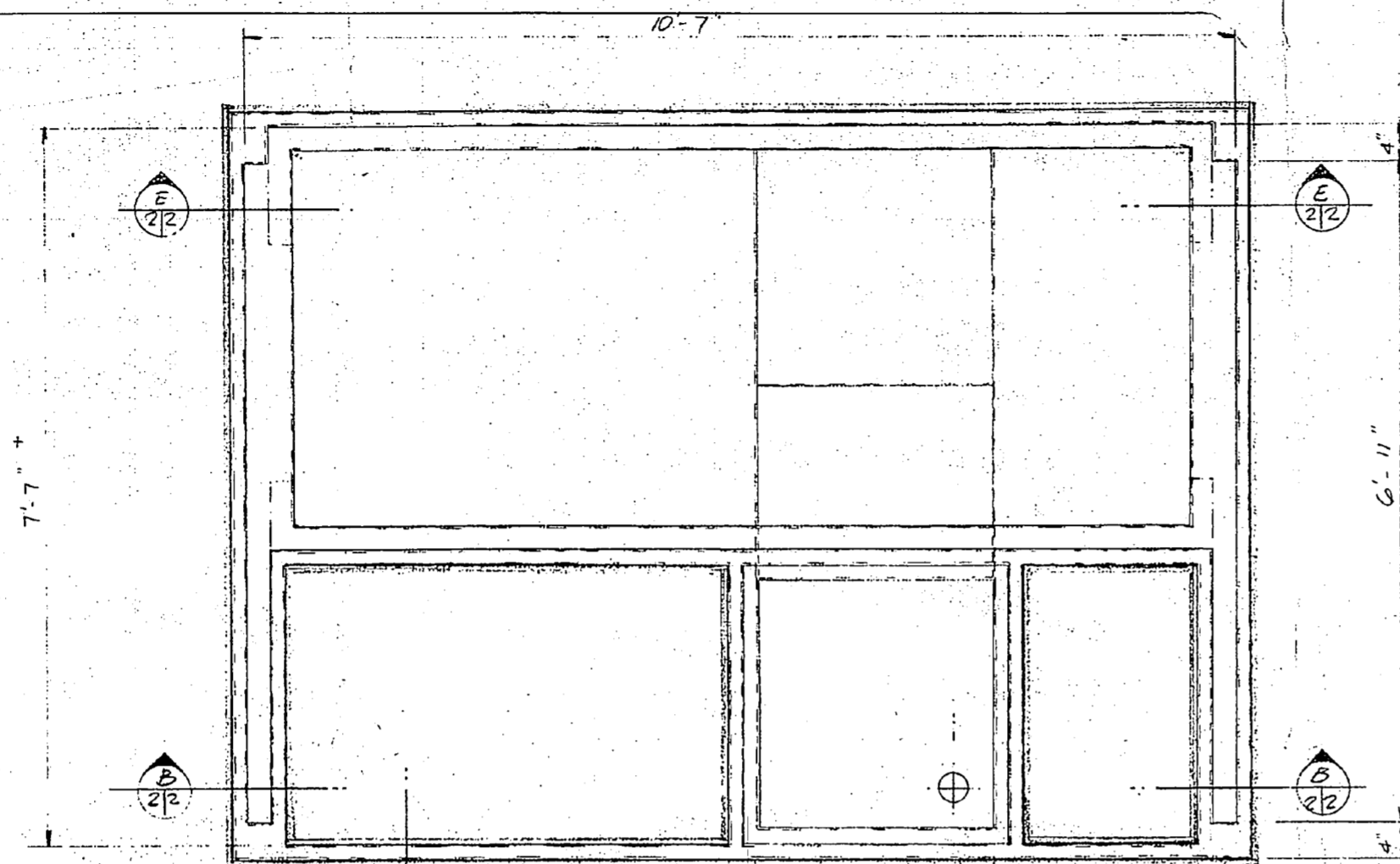
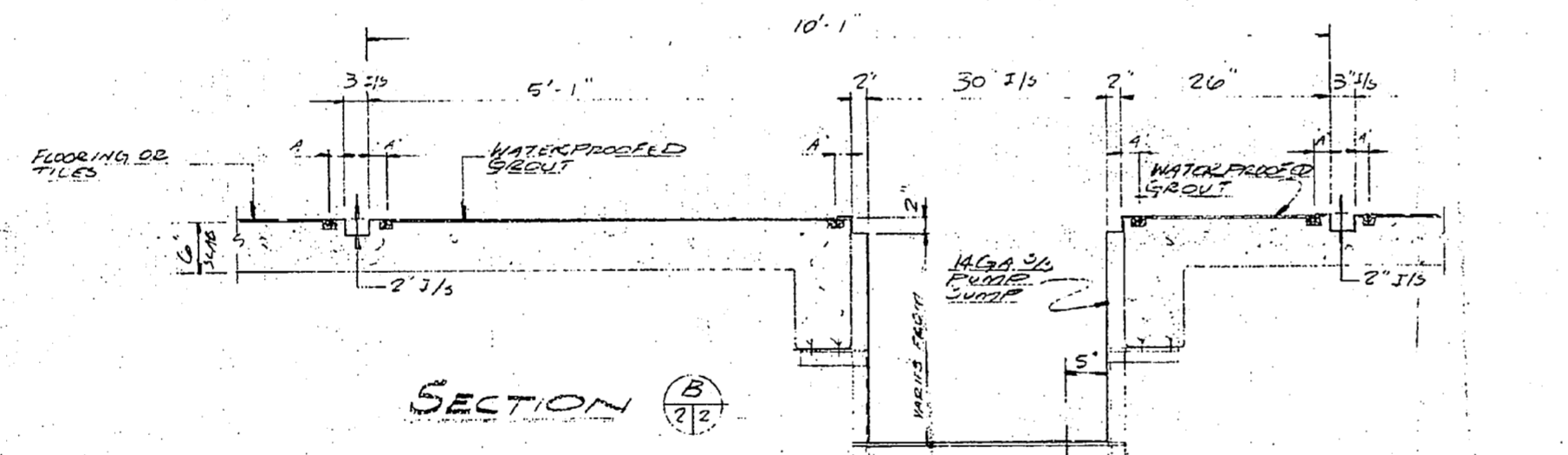


| REVISION | DESCRIPTION | DATE |
|---|--------------------|--------------------------|
| K-FLEX systems limited | | |
| 3088 W. HARTON WAY • MISSISSAUGA, ONTARIO | | |
| DATE # 10/16/77 | SCALE 3/4" = 1'-0" | DRAWN BY P.L.T. |
| NAVAL REGIONAL MEDICAL CENTRE SANDY BEACH UNIT, WOODBINE PARK SANDY BEACH, MISSISSAUGA, ONTARIO | | |
| CHECKED BY P.L.T. | DATE # 10/16/77 | DRAWING NUMBER P.18-10-1 |

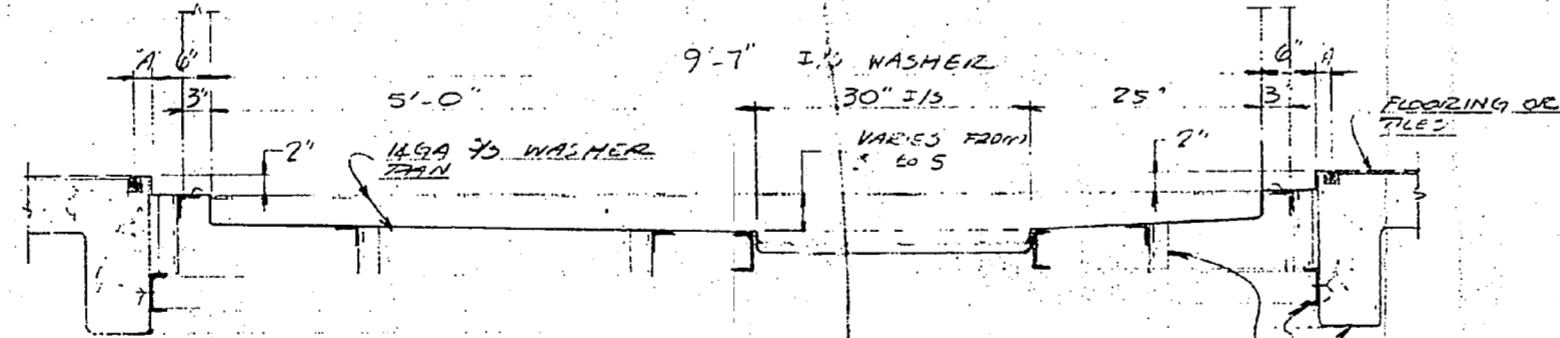




PLAN

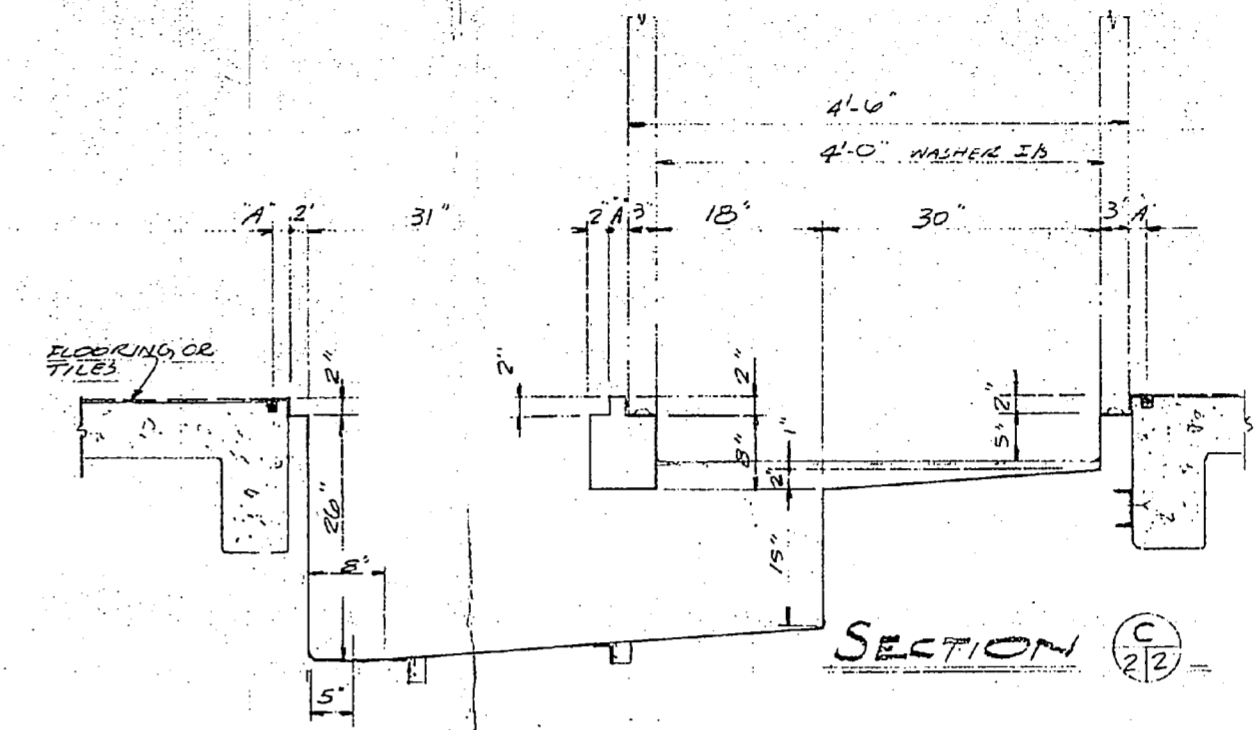


SECTION B

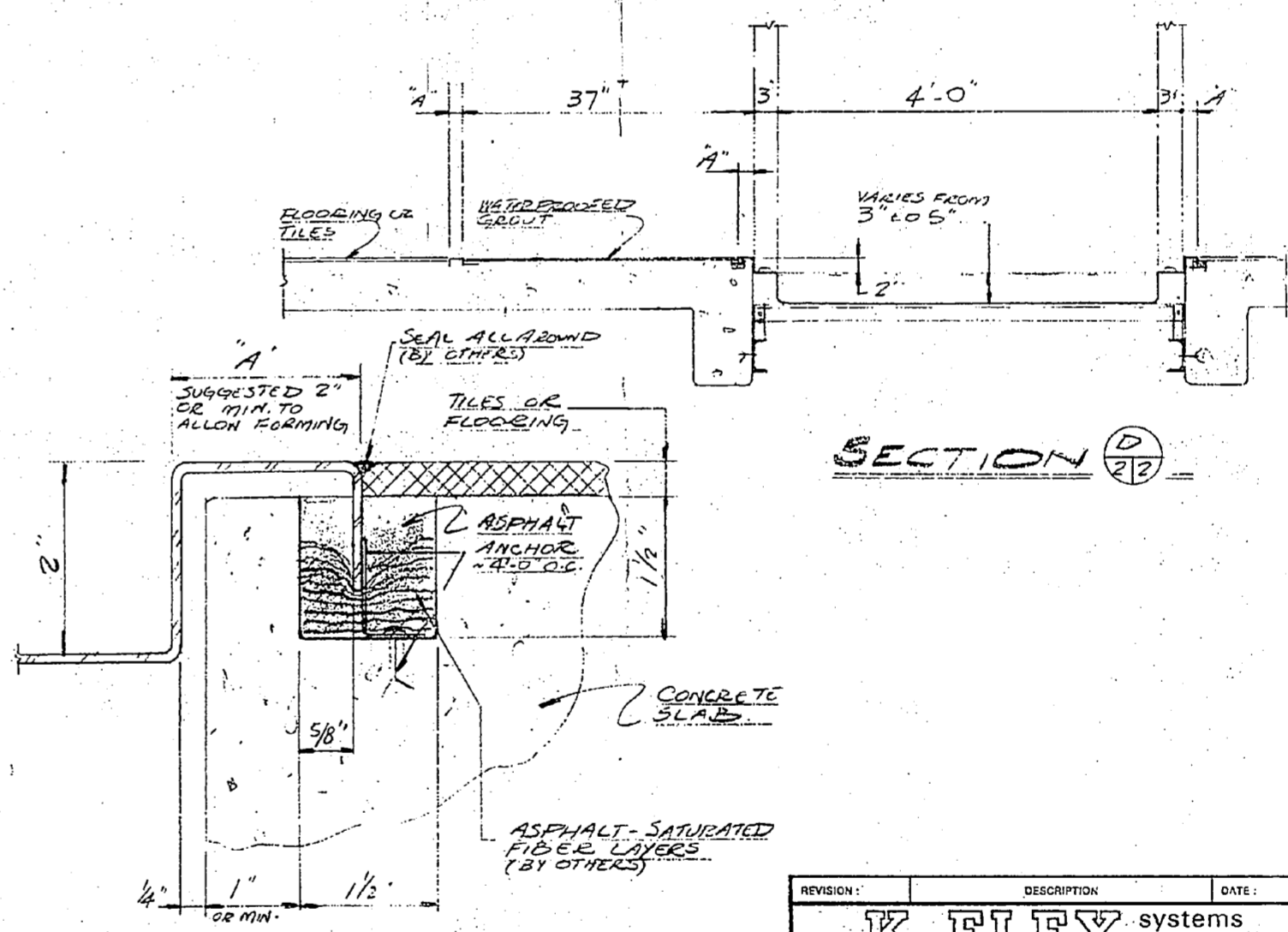


SECTION E

STRUCTURAL SUPPORT BEAM SUPPORT ALL AROUND OPENING



SECTION C



SECTION D

TYPICAL EDGE SEAL

SCALE: FULL SIZE

| REVISION | DESCRIPTION | DATE |
|---|---------------------------|-------------------------|
| K-FLEX systems limited | | |
| 3000 WHARTON WAY MISSISSAUGA, ONTARIO | | |
| DATE PLOTTED TO | SCALE: 1" = 1'-0" @ 3/32" | DRAWN BY: DR |
| NAVAL REGIONAL MED. CENTRE CAMP LESEUNE N.C. | | |
| WASHER PANEL SLAB OPENING DETAILS | | DRAWING NUMBER: R1340-2 |

