

# Hourly Heights — Mile Hammock Bay

May 1953

Month and Day Day of Series Hour	Mo. Day	2	3	4	5	6	7	8	9	10	11	Total 178 Hourly Heights	
	May 1	H.H.	H.H.	H.H.	H.H.	12	13	14	15	16	17		
0					3.0	2.9	2.8	2.4	2.6	2.5	2.5		
1					3.0	3.0	2.9	2.8	2.7	2.5	2.5		
2					3.0	3.0	3.0	3.0	2.8	2.5	2.5		
3					2.8	3.0	3.2	3.0	2.9	2.8	2.5		
4					2.6	2.8	3.1	3.0	3.0	2.9	2.8		
5					2.4	2.5	2.7	2.9	3.0	3.0	3.0		
6					2.3	2.4	2.5	2.7	3.0	3.0	3.1		
7					2.2	2.3	2.4	2.5	2.8	2.9	3.1		
8					2.1	2.2	2.3	2.4	2.7	2.7	3.0		
9					2.2	2.2	2.3	2.3	2.6	2.5	2.7		
10					2.4	2.2	2.3	2.2	2.6	2.5	2.6		
11					2.7	2.4	2.3	2.1	2.6	2.5	2.5		
12					2.7	2.7	2.5	2.2	2.5	2.4	2.5		
13					2.7	2.7	2.8	2.5	2.5	2.4	2.4		
14				2.4	2.7	2.7	2.9	2.9	2.6	2.4	2.4		
15				2.2	2.5	2.7	3.0	3.0	2.9	2.7	2.4		
16				2.1	2.3	2.6	3.0	3.1	3.0	2.9	2.8		
17				2.0	2.2	2.4	2.9	3.0	3.1	3.1	3.0		
18				2.0	2.1	2.3	2.6	2.9	3.1	3.2	3.2		
19				1.9	2.1	2.2	2.4	2.8	3.1	3.2	3.4		
20				2.0	2.1	2.1	2.3	2.7	2.9	3.1	3.4		
21				2.4	2.1	2.1	2.2	2.7	2.8	2.8	3.3		
22				2.7	2.4	2.1	2.2	2.6	2.7	2.7	3.0		
23				2.9	2.7	2.2	2.2	2.6	2.6	2.6	2.7		
Sum				22.6	59.3	59.7	62.8	64.3	67.1	65.9	67.3	Total 469.0 178 Hourly Heights	
Date May 1 <sup>st</sup>	Time	H.W.	L.W.	Date May 4 <sup>th</sup>	Time 7:05 P.M.	H.W.	L.W.	Date May 8 <sup>th</sup>	Time 3:25 A.M.	H.W.	L.W.		
May 2 <sup>nd</sup>				May 5 <sup>th</sup>	1:00 A.M.	+1.0	3.0	May 9 <sup>th</sup>	11:25 A.M.	+1.0	3.0	+0.1	2.1
May 3 <sup>rd</sup>					8:00 A.M.	+0.1	2.1	May 10 <sup>th</sup>	4:35 P.M.	+1.1	3.1	+0.6	2.6
					12:30 A.M.	+0.7	2.7		12:30 A.M.				
				May 6 <sup>th</sup>	7:40 P.M.	+0.1	2.1		5:05 P.M.	+1.0	3.0	+0.5	2.5
					2:00 A.M.	+1.0	3.0		12:50 P.M.				
					9:00 A.M.	+0.2	2.2		5:55 P.M.	+1.1	3.1	+0.5	2.5
					2:15 P.M.	+0.7	2.7		12:45 A.M.				
					9:25 P.M.	+0.1	2.1	May 11 <sup>th</sup>	5:40 A.M.	+1.0	3.0	+0.4	2.4
				May 7 <sup>th</sup>	3:00 A.M.	+1.2	3.2		1:15 P.M.	+1.2	3.2	+0.4	2.4
					9:40 A.M.	+0.3	2.3		6:50 P.M.	+1.2	3.2	+0.5	2.5
					4:05 P.M.	+1.0	3.0		1:50 A.M.	+1.1	3.1	+0.4	2.4
					9:50 P.M.	+0.2	2.2		6:35 A.M.	+1.1	3.1	+0.4	2.4
									1:55 P.M.	+1.4	3.4		
									7:55 P.M.	+1.4	3.4		



Hourly Heights — Mile Hammock Bay

May 1953

Month and Day	No. Day	13	14	15	16	17	18	19	20	21	22	
Day of Series	May 12	19	20	21	22	23	24	25	26	27	28	
Hour	18	19	20	21	22	23	24	25	26	27	28	
0	2.6	2.8	2.9	3.2	3.3	3.1	3.1	3.0	2.9	2.8	2.5	
1	2.6	2.7	2.8	2.8	2.8	2.8	3.0	3.0	2.9	2.9	2.8	
2	2.5	2.6	2.7	2.7	2.7	2.5	2.7	3.0	2.7	3.0	2.9	
3	2.5	2.5	2.7	2.6	2.5	2.3	2.4	2.7	2.9	3.1	2.9	
4	2.6	2.5	2.6	2.6	2.5	2.2	2.3	2.4	2.7	3.0	2.9	
5	2.9	2.5	2.6	2.5	2.4	2.1	2.1	2.2	2.4	2.8	2.7	
6	3.0	2.9	2.8	2.5	2.3	2.1	2.0	2.1	2.3	2.5	2.5	
7	3.1	3.0	3.2	2.9	2.3	2.1	2.0	2.1	2.2	2.4	2.4	
8	3.1	3.0	3.3	3.2	2.7	2.2	2.0	2.1	2.2	2.8	2.3	
9	3.0	3.3	3.3	3.3	3.0	2.6	2.2	2.1	2.1	2.3	2.2	
10	2.7	2.8	3.2	3.5	3.0	2.9	2.4	2.3	2.2	2.3	2.1	
11	2.6	2.6	2.9	3.1	3.0	2.9	2.8	2.7	2.4	2.3	2.1	
12	2.5	2.5	2.7	2.7	2.7	2.9	2.8	2.8	2.7	2.6	2.2	
13	2.5	2.4	2.5	2.5	2.3	2.5	2.8	2.8	2.9	2.8	2.6	
14	2.4	2.3	2.4	2.4	2.2	2.2	2.6	2.8	2.9	3.0	2.8	
15	2.4	2.3	2.3	2.3	2.1	2.0	2.3	2.7	2.9	3.0	2.9	
16	2.5	2.4	2.3	2.2	2.0	1.9	2.1	2.4	2.7	3.0	2.9	
17	2.9	2.9	2.4	2.2	1.9	1.8	2.0	2.2	2.4	2.7	2.9	
18	3.1	3.2	2.9	2.7	1.9	1.8	1.9	2.1	2.3	2.5	2.6	
19	3.3	3.5	3.3	2.9	2.2	1.9	1.9	2.0	2.2	2.4	2.4	
20	3.4	3.7	3.5	3.2	2.7	2.2	2.0	2.0	2.2	2.3	2.3	
21	3.4	3.8	3.6	3.3	3.0	2.7	2.4	2.1	2.2	2.3	2.3	
22	3.3	3.7	3.7	3.5	3.1	2.9	2.7	2.5	2.3	2.3	2.2	
23	2.9	3.4	3.6	3.5	3.1	3.0	2.9	2.7	2.6	2.3	2.1	
Sum	67.8	69.0	70.2	67.8	61.7	57.6	57.6	58.8	60.4	62.9	60.5	694.3 264 Hourly Heights
Date	TIME	H.W.	L.W.	Date	TIME	H.W.	L.W.	Date	TIME	H.W.	L.W.	
May 12 <sup>th</sup>	3:00 A.M.		+0.5 2.5	May 15 <sup>th</sup>	10:35 P.M.	+1.5 3.5		May 19 <sup>th</sup>	7:45 P.M.		0.0 2.0	
	7:50 A.M.	+1.1 3.1		May 16 <sup>th</sup>	6:10 A.M.		+0.3 3.3	May 20 <sup>th</sup>	11:45 A.M.	+0.9 2.9		
	3:25 P.M.		+0.4 2.4		10:05 A.M.	+1.0 3.0			9:20 A.M.		+0.1 2.1	
	8:40 P.M.	+1.4 3.4			5:35 P.M.		-0.1 1.9		2:45 P.M.	+0.9 2.9		
May 13 <sup>th</sup>	4:05 A.M.		+0.5 2.5	May 17 <sup>th</sup>	11:15 P.M.	+1.1 3.1			8:20 P.M.		+0.2 2.2	
	8:40 A.M.	+1.0 3.0			6:55 A.M.		+0.1 2.1	May 21 <sup>st</sup>	3:05 A.M.	+1.1 3.1		
	3:25 P.M.		+0.3 2.3		10:50 A.M.	+0.9 2.9			10:20 A.M.	+0.3 2.3		
	9:20 P.M.	+1.8 3.8		May 18 <sup>th</sup>	6:05 P.M.		-0.2 1.8		3:10 P.M.	+1.0 3.0		
May 14 <sup>th</sup>	4:35 A.M.		+0.6 2.6		12:10 A.M.	+1.1 3.1		May 22 <sup>nd</sup>	10:00 P.M.		+0.3 2.3	
	8:55 A.M.	+1.3 3.3			7:20 A.M.		0.0 2.0		3:15 A.M.	+0.9 2.9		
	4:05 P.M.		+0.3 2.3	May 19 <sup>th</sup>	11:55 A.M.	+0.8 2.8			11:20 A.M.		+0.1 2.1	
	10:10 P.M.	+1.7 3.7			6:45 P.M.		-0.1 1.9		3:55 P.M.	+0.9 2.9		
May 15 <sup>th</sup>	5:25 A.M.		+0.5 2.5		1:05 A.M.	+1.0 3.0			11:20 P.M.		+0.1 2.1	
	9:15 A.M.	+1.3 3.3			8:20 A.M.		+0.1 2.1					
	4:45 P.M.		+0.2 2.2		1:05 P.M.	+0.8 2.8						
		① 23.6	② 19.3			③ 14.2	④ 14.1			⑤ 17.7	⑥ 15.1	



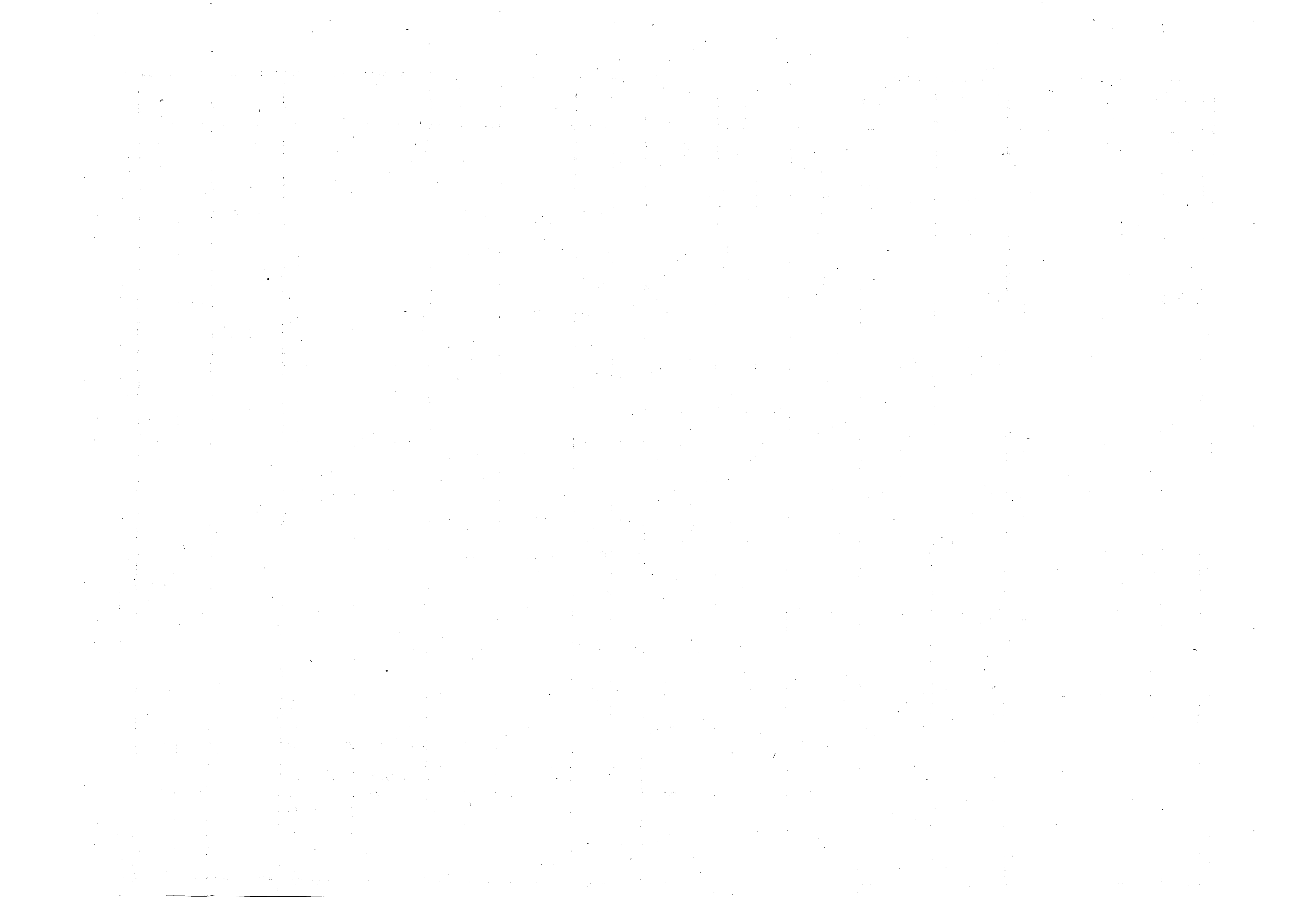
Sheet #4

# Hourly Heights — Mile Hammock Bay

May 1953

Month and Day	Mo. Day	Day	Day	26	27	28	29	30	31			
Day of Series	29	30	31	32	33	34	35	36	37			
Hour	H. H.											
0	2.1	2.0	2.0	2.0	2.1	2.4	2.5	2.6	3.0			
1	2.4	2.0	1.9	1.9	2.1	2.3	2.3	2.4	2.6			
2	2.7	2.3	2.1	2.0	2.0	2.3	2.3	2.3	2.4			
3	2.9	2.5	2.2	2.3	2.1	2.3	2.2	2.3	2.3			
4	2.9	2.5	2.6	2.6	2.3	2.3	2.2	2.3	2.3			
5	2.7	2.6	2.7	2.7	2.7	2.6	2.3	2.3	2.3			
6	2.5	2.6	2.7	2.7	2.5	3.0	2.7	2.5	2.3			
7	2.3	2.8	2.5	2.7	2.9	3.1	2.9	2.8	2.5			
8	2.2	2.1	2.2	2.5	2.8	3.1	2.9	2.8	2.9			
9	2.1	2.0	2.1	2.2	2.6	2.9	2.9	3.0	3.0			
10	2.0	1.9	2.0	2.1	2.4	2.6	2.7	2.9	3.0			
11	1.9	1.8	1.9	2.0	2.2	2.4	2.4	2.6	2.9			
12	1.9	1.8	1.5	1.9	2.0	2.3	2.2	2.3	2.6			
13	2.1	2.0	1.8	1.8	1.9	2.1	2.1	2.2	2.3			
14	2.6	2.4	2.1	1.9	1.9	2.0	2.0	2.1	2.2			
15	2.7	2.6	2.5	2.3	2.2	2.0	1.9	2.0	2.1			
16	2.8	2.7	2.7	2.7	2.7	2.2	1.9	1.9	2.0			
17	2.9	2.8	2.9	2.8	2.9	2.7	2.4	2.1	2.0			
18	2.8	2.9	3.0	3.0	3.1	3.0	2.8	2.5	2.5			
19	2.5	2.5	3.0	3.1	3.3	3.2	3.0	2.9	2.9			
20	2.3	2.7	2.8	3.0	3.3	3.3	3.2	3.1	3.1			
21	2.1	2.3	2.5	2.8	3.3	3.3	3.3	3.2	3.3			
22	2.0	2.1	2.3	2.5	3.1	3.2	3.3	3.3	3.5			
23	2.0	2.0	2.1	2.3	2.7	2.9	3.0	3.3	3.6			
Sum	57.4	55.8	56.6	57.8	61.4	63.5	61.4	61.8	63.6			
216 Hourly Heights = 539.3												
Date	Time	H.W.	L.W.	Date	Time	H.W.	L.W.	Date	Time	H.W.	L.W.	
May 23	3:45 A.M.	+0.9	2.9	May 27	2:15 A.M.	+0.0	2.0	May 30	10:25 P.M.	+1.3	3.3	
	11:45 A.M.		-0.1	1.9	7:25 A.M.	+0.4	2.9	May 31	4:50 A.M.		+0.3	2.3
	4:40 P.M.	+0.9	2.9		1:20 P.M.		-0.1	1.9	9:45 A.M.	+1.0	3.0	
	11:45 P.M.		0.0	2.0	8:40 P.M.	+1.3	3.3		4:15 P.M.		0.0	2.0
May 24	5:10 A.M.	+0.6	2.6	May 28	2:55 A.M.		+0.3	2.3	11:30 P.M.	+1.6	3.6	
	11:40 A.M.		-0.2	1.8	7:45 A.M.	+1.1	3.1					
	6:05 P.M.	+0.9	2.9		2:30 P.M.		0.0	2.0				
May 25	12:45 A.M.		-0.1	1.9	5:45 P.M.	+1.3	3.3					
	5:10 A.M.	+0.7	2.7	May 29	3:45 A.M.		+0.2	2.2				
	12:25 P.M.		-0.2	1.8	8:30 A.M.	+0.9	2.9					
	6:45 P.M.	+1.0	3.0		3:30 P.M.		-0.1	1.9				
May 26	12:25 A.M.		-0.1	1.9	9:50 P.M.	+1.3	3.3					
	6:40 A.M.	+0.7	2.7	May 30	4:00 A.M.		+0.3	2.3				
	1:25 P.M.		-0.2	1.8	9:30 A.M.	+1.0	3.0					
	7:15 P.M.	+1.1	3.1		4:05 P.M.		-0.1	1.9				
		⑤	22.8	⑦	13.1			②	21.8	⑧	16.5	
										③	2.9	
											④	

Month of May.  
 658 Hourly Heights = 1702.6 or Mean of 2.59 or M.H.W. of +0.59 M.S.L.  
 53 High Waters = 162.4 or Mean of 3.06 or M.H.W. of +1.06 M.S.L.  
 53 Low Waters = 114.3 or Mean of 2.16 or M.L.W. of -0.16 M.S.L.  
 Mean Range of Tide = 0.90 ft.  
 Extreme Range of Tide = 2.0 ft.  
 Highest water this period +1.8  
 Lowest " " " -0.2





# Hourly Heights — Mile Hammock Bay

June 1953

Month and Day	Mo. June	Day 1	Day 2	Day 3	4	5	6	7	8	9	10	11
Day of Series	38	39	40	41	42	43	44	45	46	47	48	
Hour	H. H.											
0	3.5	3.8	3.7	3.5	3.2	2.6	2.2	2.2	2.3	2.3	2.4	
1	3.3	3.8	3.7	3.6	3.3	3.0	2.4	2.2	2.2	2.3	2.3	
2	2.9	3.7	3.7	3.6	3.4	3.1	2.8	2.4	2.2	2.2	2.2	
3	2.8	3.3	3.4	3.4	3.4	3.1	2.9	2.8	2.6	2.2	2.2	
4	2.7	3.1	3.1	3.1	3.1	3.1	2.9	2.9	2.9	2.4	2.2	
5	2.6	3.0	3.0	3.0	2.8	2.8	2.9	2.9	2.9	2.5	2.4	
6	2.6	2.9	2.9	2.9	2.7	2.6	2.6	2.9	3.0	2.9	2.8	
7	2.7	2.8	2.8	2.8	2.6	2.4	2.3	2.6	3.0	3.0	2.9	
8	3.0	2.9	2.8	2.7	2.5	2.3	2.2	2.3	2.7	2.0	2.9	
9	3.3	3.2	2.8	2.4	2.4	2.2	2.0	2.2	2.2	2.6	2.8	
10	3.3	3.4	3.2	2.6	2.3	2.1	1.9	2.1	2.2	2.4	2.4	
11	3.3	3.5	3.4	3.0	2.4	2.1	1.9	2.0	2.1	2.2	2.4	
12	3.3	3.6	3.5	3.3	2.9	2.2	1.9	1.9	2.0	2.1	2.1	
13	3.1	3.5	3.5	3.4	3.2	2.7	2.3	2.0	2.0	2.0	2.0	
14	2.8	3.3	3.4	3.4	3.3	3.0	2.7	2.4	2.1	2.0	1.9	
15	2.7	3.0	3.2	3.4	3.3	3.1	2.9	2.9	2.6	2.1	1.9	
16	2.5	2.9	3.0	3.1	3.2	3.2	3.1	3.1	2.9	2.6	2.0	
17	2.5	2.8	2.8	2.8	3.0	3.1	3.2	3.2	3.1	2.9	2.5	
18	2.5	2.7	2.7	2.7	2.7	2.8	3.1	3.3	3.3	3.1	2.9	
19	2.7	2.7	2.7	2.4	2.6	2.5	3.0	3.2	3.3	3.3	3.1	
20	3.1	2.8	2.6	2.6	2.5	2.4	2.4	3.1	3.3	3.3	3.2	
21	3.4	3.2	2.9	2.5	2.4	2.3	2.2	2.7	3.1	3.3	3.3	
22	3.6	3.4	3.1	2.5	2.4	2.2	2.3	2.5	2.7	3.0	3.2	
23	3.7	3.6	3.4	2.8	2.4	2.2	2.2	2.4	2.4	2.6	2.9	
Sum	71.9	76.9	75.1	71.9	68.0	63.1	60.7	62.2	63.3	62.5	60.7	736.3
												264 Hourly Heights
Date	Time	H. W.	L. W.	Date	Time	H. W.	L. W.	Date	Time	H. W.	L. W.	
June 1 <sup>st</sup>	6:05 A.M.		+0.6 2.6	June 5 <sup>th</sup>	2:40 A.M.	+1.4 3.4		June 9 <sup>th</sup>	1:15 A.M.		+0.2 2.2	
	11:05 A.M.	+1.3 3.3			10:00 A.M.		+0.3 2.3		6:25 A.M.	+1.0 3.0		
June 2 <sup>nd</sup>	5:30 P.M.		+0.5 2.5		3:05 P.M.	+1.3 3.3			11:05 P.M.		0.0 2.0	
	12:45 A.M.	+1.8 3.8			10:15 P.M.		+0.4 2.4		7:40 P.M.	+1.3 3.3		
	6:55 A.M.		+0.8 2.8	June 6 <sup>th</sup>	2:45 A.M.	+1.1 3.1		June 10 <sup>th</sup>	2:45 A.M.		+0.2 2.2	
	12:10 P.M.	+1.6 3.6			10:55 A.M.		+0.1 2.1		6:50 A.M.	+1.0 3.0		
June 3 <sup>rd</sup>	6:55 P.M.		+0.7 2.7		4:05 P.M.	+1.2 3.2			2:05 P.M.		0.0 2.0	
	1:00 A.M.	+1.7 3.7		June 7 <sup>th</sup>	11:25 P.M.		+0.2 2.2		8:00 P.M.	+1.3 3.3		
	8:15 A.M.		+0.8 2.8		3:50 A.M.	+0.9 2.9		June 11 <sup>th</sup>	9:20 A.M.		+0.2 2.2	
	1:15 P.M.	+1.5 3.5			11:35 A.M.		-0.1 1.9		7:30 A.M.	+0.9 2.9		
June 4 <sup>th</sup>	8:00 P.M.		+0.6 2.6	June 8 <sup>th</sup>	5:25 P.M.	+1.2 3.2			3:15 P.M.		-0.1 1.9	
	1:40 A.M.	+1.6 3.6			12:30 A.M.		+0.2 2.2		8:55 P.M.	+1.3 3.3		
	9:25 A.M.		+0.6 2.6		4:50 A.M.	+0.9 2.9						
	2:25 A.M.	+1.4 3.4			12:25 P.M.		-0.1 1.9					
	9:25 P.M.		+0.5 2.5		6:15 P.M.	+1.3 3.3						
		(7) 24.9	(8) 26.1			(9) 25.3	(7) 15.0			(6) 18.8	(6) 12.5	



Hourly Heights - Mile Hammock Bay

June 1953

Month and Day	Mo. June	Day 12	Mo. June	Day 13	Day 14	15	16	17	18	19	20	21	22											
Day of Series	49		50		51	52	53	54	55	56	57	58	59											
Hour	H. H.		H. H.																					
0	2.5		2.9		3.2	3.8	3.8	3.5	3.2	3.1	2.9	2.5	2.3											
1	2.4		2.5		2.8	3.5	3.8	3.5	3.2	3.2	3.0	2.7	2.4											
2	2.3		2.4		2.6	3.1	3.5	3.2	3.2	3.2	3.1	2.8	2.6											
3	2.2		2.3		2.5	3.0	3.2	3.0	2.9	3.2	3.0	2.9	2.7											
4	2.2		2.3		2.5	2.9	3.1	2.9	2.8	3.0	2.9	2.8	2.8											
5	2.2		2.4		2.4	2.9	3.0	2.8	2.7	2.8	2.7	2.6	2.7											
6	2.7		2.5		2.5	2.9	3.0	2.7	2.6	2.7	2.6	2.4	2.5											
7	2.9		2.7		2.7	2.9	2.9	2.7	2.5	2.6	2.5	2.3	2.3											
8	3.0		2.9		3.0	3.1	2.9	2.6	2.4	2.5	2.4	2.2	2.2											
9	3.0		3.1		3.1	3.4	3.2	2.7	2.4	2.5	2.3	2.1	2.1											
10	2.9		3.1		3.3	3.6	3.4	2.9	2.6	2.5	2.3	2.0	2.0											
11	2.5		2.9		3.3	3.6	3.5	3.1	2.9	2.8	2.3	2.0	2.0											
12	2.3		2.7		3.1	3.6	3.5	3.2	3.1	3.0	2.5	2.3	2.3											
13	2.1		2.5		2.7	3.4	3.4	3.3	3.2	3.1	2.9	2.7	2.3											
14	2.0		2.3		2.6	3.1	3.2	3.2	3.3	3.2	3.0	2.8	2.7											
15	1.9		2.3		2.5	3.0	3.0	3.0	3.2	3.2	3.0	2.9	2.8											
16	1.9		2.2		2.5	3.0	2.9	2.9	3.0	3.1	3.0	2.9	2.9											
17	2.3		2.2		2.5	2.9	2.9	2.8	2.8	2.9	2.9	2.9	2.9											
18	2.8		2.6		2.7	2.8	2.8	2.7	2.7	2.7	2.6	2.5	2.9											
19	3.0		3.0		3.0	2.9	2.7	2.6	2.4	2.7	2.5	2.6	2.9											
20	3.2		3.1		3.2	3.3	2.8	2.6	2.4	2.6	2.4	2.4	2.6											
21	3.3		3.2		3.4	3.5	3.1	2.7	2.6	2.5	2.3	2.3	2.4											
22	3.3		3.4		3.5	3.6	3.3	3.0	2.8	2.6	2.3	2.3	2.3											
23	3.2		3.4		3.7	3.8	3.4	3.2	3.0	2.7	2.3	2.3	2.2											
Sum		62.1		64.9		69.3		77.6		76.3		70.8		68.3		68.5		63.7		60.4		59.5		74.4
													264 Hourly Heights											
Date	Time	H. W.	L. W.	Date	Time	H. W.	L. W.	Date	Time	H. W.	L. W.													
June 12 <sup>th</sup>	4:00 A.M.		+0.2 2.2	June 16 <sup>th</sup>	12:10 A.M.	+1.8 3.8		June 19 <sup>th</sup>	9:40 P.M.		+0.5 2.5													
	8:20 A.M.	+1.0 3.0			7:20 A.M.		+0.9 2.9	June 20 <sup>th</sup>	2:15 A.M.	+1.1 3.1														
	3:25 P.M.		-0.1 1.9		11:50 A.M.	+1.5 3.5			10:00 A.M.		+0.3 2.3													
	9:55 P.M.	+1.3 3.3			7:10 P.M.		+0.7 2.7		3:15 P.M.	+1.0 3.0														
June 13 <sup>th</sup>	4:05 A.M.		+0.3 2.3	June 17 <sup>th</sup>	12:25 A.M.	+1.5 3.5		June 21 <sup>st</sup>	10:00 P.M.		+0.5 2.5													
	9:35 A.M.	+1.1 3.1			8:00 A.M.		+0.6 2.6		8:45 A.M.	+0.9 2.9														
	4:15 P.M.		+0.2 2.2		12:40 P.M.	+1.3 3.3			10:10 A.M.		0.0 2.0													
	10:20 P.M.	+1.4 3.4			7:35 P.M.		+0.6 2.6		4:15 P.M.	+0.9 2.9														
June 14 <sup>th</sup>	4:55 A.M.		+0.4 2.4	June 18 <sup>th</sup>	12:25 A.M.	+1.2 3.2		June 22 <sup>nd</sup>	11:15 P.M.		+0.2 2.2													
	10:30 A.M.	+1.3 3.3			8:50 A.M.		+0.4 2.4		4:00 A.M.	+0.8 2.8														
	4:30 P.M.		+0.5 2.5		2:05 P.M.	+1.3 3.3			11:05 A.M.		0.0 2.0													
	11:45 P.M.	+1.8 3.8			8:05 P.M.		+0.6 2.6		5:20 P.M.	+0.9 2.9														
June 15 <sup>th</sup>	6:10 A.M.		+0.9 2.9	June 19 <sup>th</sup>	2:05 A.M.	+1.2 3.2			11:55 P.M.		+0.2 2.2													
	11:20 A.M.	+1.6 3.6			9:25 A.M.		+0.5 2.5																	
	5:50 P.M.		+0.8 2.8		2:20 P.M.	+1.3 3.3																		
		(7) 23.5	(8) 19.2			(9) 22.1	(10) 18.3			(11) 17.6	(12) 15.5													



Sheet #7

Hourly Heights — Mile Hemlock Bay

June 1953

Month and Day	No. Day June 23	Day 24	Day 25	26	27	28	29	30					
Day of Series	60	61	62	63	64	65	66	67					
Hour	H.H.	H.H.											
0	2.2	2.2	2.2	2.4	2.6	2.6	2.9	3.1					
1	2.2	2.2	2.1	2.4	2.4	2.5	2.5	2.8					
2	2.6	2.2	2.1	2.3	2.4	2.4	2.4	2.5					
3	2.7	2.3	2.2	2.3	2.3	2.3	2.3	2.3					
4	2.8	2.3	2.6	2.4	2.3	2.3	2.3	2.2					
5	2.8	2.7	2.8	2.9	2.5	2.3	2.2	2.2					
6	2.7	2.7	2.4	3.0	2.9	2.6	2.2	2.1					
7	2.6	2.6	2.9	3.0	3.0	2.9	2.5	2.1					
8	2.4	2.3	2.7	3.0	3.0	3.0	2.9	2.6					
9	2.2	2.2	2.4	2.7	2.9	3.0	3.0	2.9					
10	2.1	2.0	2.2	2.4	2.6	2.9	3.0	3.0					
11	2.0	1.9	2.1	2.3	2.4	2.5	2.8	3.0					
12	2.0	1.8	2.0	2.1	2.3	2.3	2.4	2.9					
13	2.0	1.8	1.9	2.1	2.2	2.2	2.2	2.5					
14	2.4	2.1	1.9	2.0	2.1	2.1	2.1	2.3					
15	2.8	2.5	2.4	2.0	2.0	2.0	2.0	2.1					
16	2.9	2.8	2.7	2.5	2.0	1.9	1.9	2.0					
17	3.0	2.9	3.0	2.9	2.5	2.1	1.8	1.9					
18	3.1	3.0	3.1	3.1	2.9	2.6	2.0	1.9					
19	3.0	3.1	3.3	3.2	3.1	2.9	2.5	2.1					
20	2.7	3.0	3.3	3.3	3.2	3.1	3.0	2.7					
21	2.5	2.7	3.2	3.3	3.3	3.2	3.2	2.9					
22	2.3	2.4	2.8	3.1	3.3	3.3	3.2	3.1					
23	2.2	2.3	2.5	2.8	3.0	3.2	3.2	3.2					
Sum	60.2	58.3	61.3	63.5	63.2	62.2	60.5	60.4	192 Hourly Heights 489.6				
Date	Time	H.W.	L.W.	Date	Time	H.W.	L.W.	Date	Time	H.W.	L.W.		
June 23 <sup>rd</sup>	4:20 A.M.	+0.8	2.8	June 24 <sup>th</sup>	3:45 A.M.	+0.3	2.3	June 30 <sup>th</sup>	11:30 P.M.	+1.2	2.2		
	11:50 A.M.		0.0	2.0	7:45 A.M.	+0.0	3.0						
June 24 <sup>th</sup>	5:50 P.M.	+1.1	3.1		3:25 P.M.		0.0	2.0	Month of June				
	12:50 A.M.		+0.2	2.2	9:15 A.M.	+1.3	3.3						
	5:30 A.M.	+0.7	2.7	June 25 <sup>th</sup>	4:15 A.M.	+0.3	2.3	720 H.H. = 1967.3 or mean of 2.73 H.W. & or +0.73 M.S.L. Datum					
	1:00 P.M.		-0.2	1.8	8:25 A.M.	+1.0	3.0	58 High Waters = 186.4 or mean of 3.21 H.W. or +1.31 M.S.L. Datum					
June 25 <sup>th</sup>	7:05 P.M.	+1.1	3.1		4:00 P.M.		-0.1	1.9	58 Low " = 132.1 " " " 2.25 H.L.W. " +0.25 M.S.L. Datum				
	1:45 A.M.		+0.1	2.1	8:00 P.M.	+1.3	3.3						
	6:40 A.M.	+0.9	2.9	June 29 <sup>th</sup>	5:25 A.M.	+0.2	2.2						
	1:20 P.M.		-0.1	1.9	9:40 A.M.	+1.0	3.0	Mean Range of Tide = 0.93 ft.					
June 26 <sup>th</sup>	7:45 P.M.	+1.3	3.3		5:05 P.M.		-0.2	1.8	Extreme " " " = 2.0 ft.				
	3:05 A.M.		+0.3	2.3	9:50 P.M.	+1.2	3.2						
	6:55 A.M.	+1.0	3.0	June 30 <sup>th</sup>	6:20 A.M.	+0.1	2.1	Highest water this period = +1.8					
	2:25 P.M.		0.0	2.0	10:30 A.M.	+1.0	3.0	Lowest " " " = -0.2					
	8:30 P.M.	+1.3	3.3		5:55 P.M.		-0.1	1.9					
		⑤	24.2	⑦	14.3		⑥	25.0	②	16.2			



Sheet #8

Hourly Heights — Mile Hammock Bay

July 1953

Month and Day	Mo July	Day 1	Day 2	Day 3	4	5	6	7	8	9	10	11	
Day of Series	68	69	70	71	72	73	74	75	76	77	78		
Hour	H.H.	H.H.											
0	3.2	3.2	3.0	2.7	2.3	2.3	2.1	2.0	2.0	2.1	2.4		
1	2.9	3.2	3.1	2.8	2.7	2.7	2.1	1.9	1.9	2.0	2.3		
2	2.6	3.0	3.0	2.8	2.5	2.9	2.3	2.0	1.9	2.0	2.2		
3	2.4	2.6	2.6	2.5	2.5	2.9	2.5	2.1	2.0	2.0	2.2		
4	2.3	2.4	2.4	2.3	2.3	2.9	2.7	2.5	2.3	2.1	2.5		
5	2.2	2.2	2.2	2.1	2.9	2.7	2.7	2.6	2.5	2.5	2.7		
6	2.1	2.2	2.1	2.0	2.1	2.7	2.6	2.6	2.6	2.7	2.9		
7	2.1	2.1	2.1	1.9	2.1	2.8	2.8	2.4	2.6	2.8	3.0		
8	2.4	2.1	1.9	1.9	2.0	2.2	2.2	2.0	2.4	2.8	3.1		
9	2.9	2.3	1.8	1.9	1.9	2.0	2.0	1.9	2.1	2.6	3.0		
10	3.0	2.8	2.4	1.8	1.9	2.0	1.9	1.5	2.0	2.4	2.9		
11	3.1	3.0	2.8	2.2	2.0	2.0	1.9	1.7	1.8	2.1	2.6		
12	3.1	3.1	3.0	2.7	2.4	2.1	1.5	1.6	1.7	2.0	2.5		
13	2.9	3.1	3.0	2.9	2.8	2.6	1.9	1.6	1.7	1.9	2.4		
14	2.6	3.0	3.1	3.0	2.9	2.8	2.3	1.7	1.7	1.9	2.3		
15	2.4	2.6	2.9	3.0	3.0	3.0	2.6	2.3	2.1	2.0	2.3		
16	2.2	2.3	2.5	2.5	3.1	3.1	2.7	2.7	2.5	2.6	2.4		
17	2.2	2.2	2.3	2.4	3.0	3.1	2.8	2.8	2.7	2.8	2.8		
18	2.1	2.1	2.2	2.2	2.2	2.8	2.9	2.9	2.8	2.9	3.0		
19	2.1	2.1	2.1	2.1	2.5	2.8	2.5	2.9	2.9	3.0	3.2		
20	2.2	2.1	2.0	2.1	2.3	2.5	2.5	2.9	3.0	3.1	3.4		
21	2.7	2.1	2.0	2.0	2.2	2.8	2.2	2.7	2.9	3.1	3.5		
22	3.0	2.6	2.0	2.0	2.1	2.2	2.1	2.2	2.6	3.0	3.5		
23	3.1	2.9	2.4	2.0	2.1	2.2	2.0	2.1	2.3	2.7	3.4		
Sum	61.7	61.3	59.0	56.4	59.0	61.0	56.0	53.9	55.0	59.1	66.3	698.7	264 H.H.
Date	Time	H.W.	L.W.	Date	Time	H.W.	L.W.	Date	Time	H.W.	L.W.		
July 1 <sup>st</sup>	6:30 A.M.		+0.1 2.1	July 5 <sup>th</sup>	3:10 A.M.	+0.8 2.8		July 9 <sup>th</sup>	1:30 A.M.		-0.1 1.9		
	11:30 A.M.	+1.1 3.1			10:05 A.M.		-0.1 1.9		6:20 A.M.	+0.6 2.6		-0.1 1.9	
July 2 <sup>nd</sup>	7:00 P.M.		+0.1 2.1		4:05 P.M.	+1.1 3.1			1:25 P.M.		-0.3 1.7		
	12:25 A.M.	+1.2 3.2			10:15 P.M.		+0.1 2.1		7:55 P.M.	+1.0 3.0			
	7:35 A.M.		+0.1 2.1	July 6 <sup>th</sup>	3:25 A.M.	+0.9 2.9		July 10 <sup>th</sup>	2:40 A.M.		0.0 2.0		
	12:50 A.M.	+1.1 3.1			10:45 A.M.		0.0 2.0		7:50 A.M.	+0.8 2.8			
July 3 <sup>rd</sup>	7:35 P.M.		+0.1 2.1		4:50 P.M.	+1.1 3.1			2:00 P.M.		-0.1 1.9		
	1:05 A.M.	+1.1 3.1		July 7 <sup>th</sup>	12:30 A.M.		+0.1 2.1		9:00 P.M.	+1.1 3.1			
	8:25 A.M.		-0.1 1.9		4:30 A.M.	+0.7 2.7		July 11 <sup>th</sup>	2:55 A.M.		+0.2 2.2		
	2:00 P.M.	+1.1 3.1			12:05 P.M.		-0.2 1.8		8:15 A.M.	+1.1 3.1			
July 4 <sup>th</sup>	9:10 P.M.		0.0 2.0		6:00 P.M.	+0.9 2.9			3:00 P.M.		+0.3 2.3		
	2:00 A.M.	+0.8 2.8		July 8 <sup>th</sup>	1:00 A.M.		-0.1 1.9		9:53 P.M.	+1.5 3.5			
	10:00 A.M.		-0.2 1.8		5:20 A.M.	+0.6 2.6							
	2:30 P.M.	+1.0 3.0			1:05 P.M.		-0.4 1.6						
	10:10 P.M.		0.0 2.0		7:20 P.M.	+0.9 2.9							
		(7) 21.4	(8) 16.1			(8) 23.0	(7) 13.4			(6) 15.1	(6) 12.0		





Sheet 9

Hourly Heights - Mile Hammett Bay

July 1953

Month and Day	Mo. July	Day 12	Day 13	Day 14	15	16	17	18	19	20	21	22	
Day of Series	79	80	81	82	83	84	85	86	87	88	89		
Hour	H.H.	H.H.											
0	3.0	3.2	3.7	3.6	3.4	3.3	3.1	3.0	2.5	2.4	2.3		
1	2.8	3.0	3.4	3.4	3.4	3.3	3.1	3.0	2.7	2.5	2.3		
2	2.7	2.9	3.1	3.2	3.1	3.1	3.1	3.0	2.9	2.8	2.6		
3	2.4	2.8	3.1	3.1	3.0	2.9	2.9	2.9	2.9	2.8	2.7		
4	2.6	2.8	3.0	3.0	2.9	2.8	2.7	2.6	2.7	2.5	2.5		
5	2.6	2.7	3.0	2.9	2.8	2.7	2.5	2.5	2.4	2.4	2.6		
6	2.9	2.9	3.0	2.8	2.7	2.6	2.4	2.5	2.4	2.4	2.4		
7	3.2	3.2	3.1	2.8	2.7	2.5	2.4	2.4	2.3	2.3	2.4		
8	3.3	3.3	3.3	3.0	2.8	2.5	2.4	2.3	2.2	2.1	2.3		
9	3.4	3.4	3.5	3.3	3.1	2.7	2.4	2.3	2.1	2.1	2.1		
10	3.4	3.4	3.6	3.4	3.2	3.0	2.6	2.3	2.1	2.0	2.1		
11	3.2	3.3	3.6	3.4	3.3	3.1	2.9	2.7	2.2	2.1	2.0		
12	2.9	3.1	3.5	3.5	3.3	3.3	3.0	2.9	2.6	2.3	2.0		
13	2.8	3.0	3.3	3.2	3.3	3.3	3.1	3.0	2.5	2.6	2.3		
14	2.7	2.8	3.1	3.0	3.1	3.2	3.1	3.1	2.9	2.8	2.7		
15	2.6	2.7	3.0	2.9	2.9	2.9	3.1	3.1	3.0	2.9	2.8		
16	2.5	2.7	3.0	2.7	2.8	2.7	2.9	3.0	3.3	3.0	3.0		
17	2.7	2.7	3.0	2.7	2.7	2.7	2.7	2.8	3.1	3.1	3.1		
18	3.1	2.9	3.0	2.7	2.7	2.6	2.5	2.6	2.7	3.0	3.1		
19	3.3	3.3	3.1	2.7	2.7	2.6	2.5	2.5	2.6	2.7	3.0		
20	3.4	3.4	3.4	3.0	2.8	2.5	2.5	2.4	2.6	2.5	2.7		
21	3.5	3.5	3.5	3.2	3.0	2.6	2.5	2.6	2.5	2.4	2.5		
22	3.5	3.7	3.6	3.3	3.2	2.8	2.6	2.4	2.5	2.3	2.4		
23	3.5	3.7	3.6	3.4	3.3	3.1	2.8	2.5	2.5	2.3	2.3		
Sum	72.2	74.4	78.5	74.2	72.2	68.7	65.8	64.2	63.1	60.9	60.8	755.0	264 H.H.
Date	Time	H.W.	L.W.	Date	Time	H.W.	L.W.	Date	Time	H.W.	L.W.		
July 12	4:10 A.M.		+0.6 2.6	July 16	12:15 A.M.	+1.4 3.4		July 19	9:25 P.M.		+0.4 2.4		
	9:30 A.M.	+1.4 3.4			7:05 A.M.		+0.7 2.7	July 20	11:55 A.M.	+0.9 2.9			
	4:10 P.M.		+0.5 2.5		12:05 P.M.	+1.3 3.3			9:30 A.M.		+0.1 2.1		
	10:00 P.M.	+1.5 3.5			6:45 P.M.		+0.7 2.7		4:10 P.M.	+1.3 3.3			
July 13	4:45 A.M.		+0.7 2.7	July 17	12:20 A.M.	+1.3 3.3		July 21	11:50 P.M.		+0.4 2.4		
	9:30 A.M.	+1.4 3.4			7:40 A.M.		+0.5 2.5		3:10 A.M.	+0.8 2.8			
	4:25 P.M.		+0.7 2.7		12:35 P.M.	+1.3 3.3			10:00 A.M.		4.0 2.0		
	11:15 P.M.	+1.7 3.7			8:00 P.M.		+0.5 2.5		4:55 P.M.	+1.1 3.1			
July 14	5:25 A.M.		+1.0 3.0	July 18	1:10 A.M.	+1.1 3.1		July 22	11:45 P.M.		+0.3 2.3		
	11:00 A.M.	+1.6 3.6			9:35 A.M.		+0.4 2.4		4:10 A.M.	+0.8 2.8			
	5:00 P.M.		+1.0 3.0		1:45 P.M.	+1.1 3.1			11:15 A.M.		0.0 2.0		
	11:20 P.M.	+1.6 3.6			5:25 P.M.		+0.5 2.5		5:50 P.M.	+1.1 3.1			
July 15	6:35 A.M.		+0.8 2.8	July 19	1:35 A.M.	+1.0 3.0							
	11:45 A.M.	+1.5 3.5			9:05 A.M.		+0.3 2.3						
	6:00 P.M.		+0.7 2.7		2:40 P.M.	+1.1 3.1							
		(7) 24.7	(8) 22.0			(8) 25.6	(7) 17.6			(6) 18.0	(6) 13.2		



Hourly Heights — Mile Hammock Bay

July 1953

Month and Day	Mo. Day	Mo. Day	Day	26	27	28	29	30	31		
Day of Section	July 23	July 24	25	26	27	28	29	30	31		
Hour	H. H.	H. H.									
0	2.3	2.2	2.3	2.7	2.8	2.9	3.1	3.1	3.0		
1	2.3	2.1	2.3	2.6	2.7	2.7	2.7	2.8	2.9		
2	2.4	2.1	2.3	2.4	2.6	2.6	2.5	2.5	2.5		
3	2.7	2.2	2.3	2.4	2.5	2.5	2.4	2.4	2.3		
4	2.8	2.6	2.7	2.4	2.5	2.4	2.3	2.3	2.2		
5	2.9	2.8	2.8	2.9	2.9	2.4	2.3	2.2	2.1		
6	2.5	2.8	2.9	3.1	2.9	2.4	2.2	2.1	2.0		
7	2.5	2.7	3.0	3.2	3.2	2.9	2.4	2.1	1.9		
8	2.4	2.5	3.0	3.3	3.3	3.2	2.9	2.4	1.9		
9	2.3	2.3	2.8	3.3	3.3	3.3	3.1	2.9	2.3		
10	2.2	2.1	2.5	3.0	3.2	3.3	3.2	3.0	2.5		
11	2.0	2.0	2.3	2.7	2.8	3.1	3.2	3.1	2.9		
12	2.0	1.9	2.2	2.5	2.6	2.7	3.0	3.1	3.0		
13	2.0	1.9	2.1	2.4	2.4	2.5	2.6	2.9	3.1		
14	2.2	1.9	2.1	2.3	2.4	2.4	2.4	2.5	2.9		
15	2.6	2.4	2.3	2.2	2.3	2.3	2.3	2.3	2.5		
16	2.9	2.8	2.7	2.3	2.3	2.2	2.2	2.1	2.3		
17	3.0	3.0	3.0	2.5	2.3	2.1	2.1	2.0	2.2		
18	3.0	3.1	3.2	3.1	2.5	2.2	2.1	2.0	2.1		
19	3.0	3.1	3.4	3.3	3.1	2.9	2.2	2.0	2.1		
20	2.9	3.1	3.5	3.5	3.3	3.1	2.8	2.2	2.2		
21	2.6	3.0	3.5	3.6	3.4	3.3	3.0	2.7	2.1		
22	2.4	2.7	3.2	3.5	3.4	3.3	3.1	2.9	2.5		
23	2.3	2.4	2.9	3.2	3.3	3.3	3.2	3.0	2.9		
Sum	60.5	59.7	65.2	68.7	68.0	66.0	63.3	60.6	58.5		570.5
										2.16 H. H.	
Date	Time	H. W.	L. W.	Date	Time	H. W.	L. W.	Date	Time	H. W.	L. W.
July 23	12:10 A.M.		+0.3 2.3	July 26	9:30 P.M.	+1.6 3.6		July 30	6:30 P.M.		0.0 2.0
	5:00 A.M.	+0.9 2.9		July 27	3:50 A.M.		+0.5 2.5		11:50 P.M.	+1.0 3.0	
	12:25 P.M.		0.0 2.0		9:00 A.M.	+1.3 3.3		July 31	7:25 A.M.		-0.1 1.9
	6:15 P.M.	+1.0 3.0			4:15 P.M.		+0.3 2.3		12:50 P.M.	+1.1 3.1	
July 24	11:25 A.M.		+0.1 2.1	July 28	9:50 P.M.	+1.4 3.4			8:05 P.M.		0.0 2.0
	6:15 A.M.	+0.8 2.8			5:05 A.M.		+0.7 2.7				
	1:05 P.M.		-0.1 1.9		9:25 A.M.	+1.3 3.3					
	7:30 P.M.	+1.1 3.1			5:00 P.M.		+0.1 2.1				
July 25	1:40 A.M.		+0.3 2.3	July 29	10:30 P.M.	+1.3 3.3					
	7:40 A.M.	+1.0 3.0			5:55 A.M.		+0.2 2.2				
	1:30 P.M.		+0.1 2.1		11:55 A.M.	+1.2 3.2					
	8:30 P.M.	+1.5 3.5			6:05 P.M.		+0.1 2.1				
July 26	3:00 A.M.		+0.4 2.4	July 30	11:05 P.M.	+1.2 3.2					
	8:20 A.M.	+1.3 3.3			6:25 A.M.		+0.1 2.1				
	3:00 P.M.		+0.2 2.2		11:35 A.M.	+1.1 3.1					
		(7)	21.6 (8)			(5)	20.4 (7)			(2)	5.1 (3)
			17.3				15.7				5.9

Month of July  
 74.4 H.H. = 1976.2 = mean of 2.65 H.W. on +0.65 H.S. on Oston  
 59 High Waters = 154.9 on mean of 2.13 H.W. on +1.13 " " "  
 60 Low Waters = 133.2 " " " 2.22 H.L.W. " +0.22 " " "  
 Mean Range of Tide = 0.91 ft.  
 Extreme " " " = 3.1 ft.  
 Highest water this period = +1.7  
 Lowest " " " = -0.4



Sheet #11

# Hourly Heights — Mile Hornumack Bay

August 1953

Month and Day	No. Day 1	No. Day 2	3	4	5	6	7	8	9	10	11		
Day of Service	99	100	101	102	103	104	105	106	107	108	109		
Hour	H.H.	H.H.											
0	2.9	2.9	2.5	2.4	2.5	2.5	2.5	2.6	2.8	2.9	2.7		
1	2.9	2.9	2.8	2.8	2.6	2.5	2.5	2.5	2.6	2.7	2.5		
2	2.8	2.9	2.8	2.9	2.9	2.5	2.5	2.4	2.6	2.6	2.4		
3	2.4	2.7	2.8	3.0	3.0	2.8	2.5	2.4	2.6	2.5	2.3		
4	2.2	2.4	2.6	3.0	3.1	3.0	2.8	2.7	2.6	2.5	2.3		
5	2.1	2.3	2.4	2.9	3.1	3.1	3.0	2.9	2.8	2.6	2.3		
6	2.0	2.2	2.3	2.5	3.1	3.1	3.1	3.1	3.1	2.7	2.5		
7	1.9	2.1	2.2	2.5	2.8	3.0	3.1	3.1	3.3	3.1	2.9		
8	1.9	2.0	2.0	2.4	2.6	2.7	3.0	3.2	3.3	3.2	3.0		
9	2.0	1.9	1.9	2.3	2.5	2.5	2.7	3.1	3.3	3.2	3.1		
10	2.5	2.1	1.9	2.2	2.4	2.4	2.6	2.7	3.1	3.0	3.0		
11	2.8	2.6	2.1	2.2	2.3	2.3	2.4	2.5	2.9	2.9	2.9		
12	3.0	2.9	2.5	2.4	2.3	2.2	2.4	2.4	2.7	2.6	2.6		
13	3.1	3.0	2.8	2.9	2.4	2.2	2.3	2.3	2.5	2.4	2.4		
14	3.1	3.1	2.9	3.0	2.9	2.3	2.2	2.3	2.4	2.3	2.3		
15	3.0	3.1	3.0	3.2	3.0	2.8	2.5	2.3	2.4	2.3	2.3		
16	2.6	3.0	3.0	3.3	3.2	3.0	2.9	2.7	2.5	2.3	2.2		
17	2.3	2.7	3.0	3.3	3.3	3.2	3.1	3.0	2.9	2.4	2.3		
18	2.3	2.4	2.8	3.3	3.3	3.3	3.2	3.2	3.1	2.8	2.5		
19	2.2	2.3	2.5	3.1	3.3	3.3	3.3	3.3	3.3	3.0	2.8		
20	2.1	2.2	2.3	2.8	3.0	3.2	3.3	3.4	3.4	3.1	3.0		
21	2.1	2.1	2.3	2.7	2.8	2.9	3.2	3.4	3.4	3.1	3.0		
22	2.2	2.1	2.3	2.6	2.4	2.4	2.9	3.1	3.4	3.1	3.0		
23	2.7	2.2	2.2	2.5	2.6	2.4	2.7	2.9	3.1	3.0	3.0		
Sum	59.1	60.1	59.9	66.5	67.6	66.0	66.7	67.5	70.2	66.3	63.3	713.2	
											264 H.H.		
Date	Time	H.W.	L.W.	Date	Time	H.W.	L.W.	Date	Time	H.W.	L.W.		
Aug 1st	12:50 A.M.	+0.9	2.9	Aug 5th	5:05 A.M.	+1.1	3.1	Aug 9th	8:30 A.M.	+1.3	3.3		
	8:00 A.M.		-0.1	1.9	12:10 P.M.		+0.3	2.3	3:00 P.M.		+0.4	2.4	
	1:35 P.M.	+1.1	3.1	Aug 6th	6:00 P.M.	+1.3	3.3	Aug 10th	9:15 P.M.	+1.4	3.4		
Aug 2nd	9:10 P.M.		+0.1	2.1	12:55 A.M.		+0.5	2.5	Aug 11th	A.M.		+0.5	2.5
	1:35 A.M.	+0.9	2.9	Aug 7th	5:20 A.M.	+1.1	3.1	Aug 11th	A.M.	+1.2	3.2		
	9:10 A.M.		-0.1	1.9	12:45 P.M.		+0.2	2.2	3:55 P.M.		+0.3	2.3	
	2:35 P.M.	+1.1	3.1	Aug 8th	7:00 P.M.	+1.3	3.3	Aug 11th	9:15 P.M.	+1.1	3.1		
Aug 3rd	9:55 P.M.		+0.1	2.1	1:40 A.M.		+0.5	2.5	Aug 11th	4:25 A.M.		+0.3	2.3
	2:15 A.M.	+0.8	2.8	Aug 7th	6:50 A.M.	+1.1	3.1	Aug 11th	9:30 A.M.	+1.1	3.1		
	10:00 A.M.		-0.1	1.9	1:55 P.M.		+0.2	2.2	Aug 11th	4:15 P.M.		+0.2	2.2
	4:05 P.M.	+1.0	3.0	Aug 8th	7:45 P.M.	+1.3	3.3	Aug 11th	10:00 P.M.	+1.0	3.0		
	10:50 P.M.		+0.2	2.2	Aug 8th	2:40 A.M.		+0.4	2.4				
Aug 4th	3:45 A.M.	+1.0	3.0	Aug 8th	7:55 A.M.	+1.2	3.2						
	10:40 A.M.		+0.2	2.2	Aug 8th	2:25 P.M.		+0.3	2.3				
	5:30 P.M.	+1.3	3.3	Aug 9th	8:15 P.M.	+1.4	3.4						
	11:40 P.M.		+0.5	2.5	Aug 9th	3:00 A.M.		+0.6	2.6				
		(8)	24.1	(8)	16.8	(8)	25.8	(8)	19.0	(6)	19.1	(5)	11.7



Sheet #12

Hourly Heights — Mile Hammock Bay

August 1953

Month and Day	No. 12 Day 110	No. 13 Day 111	14 112	15 113	16 114	17 115	18 116	19 117	20 118	21 119	22 120	
Hour 0	2.8	3.0	3.4	2.6	2.9	2.7	2.7	2.8	2.8	2.8	2.8	2.8
1	2.5	2.8	2.9	2.4	2.8	2.7	2.7	2.9	3.0	2.8	2.8	2.8
2	2.4	2.6	2.6	2.1	2.6	2.5	2.7	2.9	3.1	3.1	3.1	2.9
3	2.3	2.5	2.4	2.0	2.4	2.3	2.7	2.9	3.2	3.2	3.2	3.2
4	2.3	2.5	2.4	1.9	2.3	2.2	2.5	2.8	3.2	3.3	3.4	3.4
5	2.3	2.5	2.3	1.9	2.1	2.1	2.4	2.7	3.1	3.3	3.4	3.4
6	2.3	2.5	2.3	1.9	2.1	2.0	2.3	2.6	3.0	3.2	3.5	3.5
7	2.7	2.9	2.3	1.9	2.1	1.9	2.3	2.5	2.9	3.0	3.4	3.4
8	2.9	3.1	2.3	2.0	2.1	1.9	2.3	2.4	2.8	2.9	3.2	3.2
9	3.0	3.3	2.6	2.4	2.3	1.9	2.3	2.3	2.7	2.7	3.1	3.1
10	3.0	3.4	2.9	2.4	2.6	2.2	2.3	2.3	2.4	2.6	2.9	2.9
11	3.0	3.6	2.9	2.8	2.7	2.6	2.5	2.5	2.5	2.6	2.8	2.8
12	2.9	3.7	2.9	2.9	2.8	2.5	2.5	2.8	2.7	2.5	2.7	2.7
13	2.6	3.8	2.6	2.8	2.9	2.9	2.9	3.0	3.0	2.7	2.7	2.7
14	2.5	3.7	2.3	2.7	2.8	2.8	3.0	3.1	3.3	3.1	2.9	2.9
15	2.3	3.7	2.2	2.4	2.6	2.7	3.0	3.2	3.4	3.3	3.3	3.3
16	2.3	3.7	2.1	2.2	2.3	2.5	2.9	3.2	3.5	3.4	3.5	3.5
17	2.3	3.6	2.0	2.1	2.2	2.4	2.7	3.2	3.6	3.6	3.7	3.7
18	2.4	3.7	2.0	2.1	2.2	2.3	2.6	3.2	3.5	3.6	3.8	3.8
19	2.8	3.7	2.0	2.1	2.1	2.2	2.5	2.9	3.4	3.6	3.9	3.9
20	2.9	3.7	2.1	2.2	2.1	2.2	2.5	2.8	3.1	3.4	3.9	3.9
21	3.0	3.7	2.4	2.5	2.2	2.1	2.4	2.8	2.9	3.1	3.7	3.7
22	3.1	3.9	2.6	2.7	2.4	2.3	2.4	2.7	2.9	2.9	3.3	3.3
23	3.1	3.8	2.6	2.8	2.6	2.5	2.4	2.7	2.8	2.8	3.2	3.2
Sum	63.7	79.4	59.1	56.0	58.2	56.7	61.8	67.2	73.0	73.5	78.0	726.6
											264 H.H.	
Date	Time	H.W.	L.W.	Date	Time	H.W.	L.W.	Date	Time	H.W.	L.W.	
Aug. 12 <sup>th</sup>	4:35 A.M.		+0.3 2.3	Aug. 16 <sup>th</sup>	6:35 A.M.	+0.1 2.1		Aug. 20 <sup>th</sup>	3:50 A.M.	+1.2 3.2		
	10:25 A.M.	+1.0 3.0			1:00 P.M.	+0.9 2.9			10:55 A.M.		+0.5 2.5	
	4:35 P.M.		+0.3 2.3	Aug. 17 <sup>th</sup>	7:30 P.M.		+0.1 2.1		5:25 P.M.	+1.6 3.6		
	10:45 P.M.	+1.1 3.1			12:25 A.M.	+0.7 2.7		Aug. 21 <sup>st</sup>	11:55 P.M.		+0.8 2.8	
Aug. 13 <sup>th</sup>	4:55 A.M.		+0.5 2.5		8:15 A.M.	+0.1 1.9			4:35 A.M.	+1.3 3.3		
	12:30 P.M.	+1.8 3.8		Aug. 18 <sup>th</sup>	12:50 P.M.	+0.9 2.9			12:10 P.M.		+0.5 2.5	
	5:15 P.M.	+1.6 3.6			8:55 P.M.	+0.1 2.1		Aug. 22 <sup>nd</sup>	6:15 P.M.	+1.6 3.6		
	10:30 P.M.	+1.9 3.9			1:05 A.M.	+0.7 2.7			12:10 A.M.		+0.8 2.8	
Aug. 14 <sup>th</sup>	7:10 A.M.		+0.3 2.3		9:25 A.M.	+0.3 2.3			6:30 A.M.	+1.5 3.5		
	11:30 A.M.	+0.9 2.9		Aug. 19 <sup>th</sup>	2:40 P.M.	+1.0 3.0			1:15 P.M.		+0.7 2.7	
	6:50 P.M.		0.0 2.0		10:00 P.M.	+0.4 2.4			7:20 P.M.	+1.9 3.9		
Aug. 15 <sup>th</sup>	11:25 P.M.	+0.6 2.6			2:25 A.M.	+0.9 2.9						
	6:50 A.M.		-0.1 1.9		9:50 A.M.		+0.3 2.3					
	12:20 P.M.	+0.9 2.9			4:40 P.M.	+1.2 3.2						
	6:40 P.M.		+0.1 2.1		10:40 P.M.	+0.7 2.7						
Aug. 16 <sup>th</sup>	12:15 A.M.	+0.9 2.9										
		(5) 25.1 (8)	19.0			(7) 20.3 (8)	17.9			(6) 21.1 (5)	13.3	

Hurricane off shore





Sheet #13

# Hourly Heights — Mile Hammock Bay

August — 1953

Month and Day	Aug 23	24	25	26	27	28	29	30	31				
Day of Series	121	122	123	124	125	126	127	128	129				
Hour	H. H.	H. H.											
0	3.1	3.1	3.2	3.4	3.4	3.6	3.5	3.3	3.1				
1	3.0	3.0	3.1	3.2	3.2	3.2	3.3	3.3	3.1				
2	3.1	3.0	3.1	3.1	3.1	3.1	3.0	2.9	3.0				
3	3.2	3.0	3.0	3.0	3.0	2.9	2.9	2.7	2.7				
4	3.5	3.3	2.9	2.9	2.9	2.8	2.8	2.6	2.6				
5	3.7	3.6	3.2	2.9	2.8	2.5	2.7	2.5	2.5				
6	3.7	3.7	3.6	3.3	2.9	2.5	2.6	2.4	2.4				
7	3.8	3.8	3.7	3.6	3.3	2.8	2.6	2.4	2.3				
8	3.7	3.8	3.8	3.8	3.6	3.3	2.7	2.3	2.2				
9	3.4	3.7	3.9	3.9	3.8	3.5	3.2	2.5	2.2				
10	3.2	3.4	3.7	3.9	3.8	3.7	3.4	3.0	2.6				
11	3.1	3.2	3.4	3.7	3.8	3.7	3.6	3.2	2.9				
12	3.0	3.0	3.1	3.4	3.6	3.8	3.6	3.3	3.0				
13	2.9	2.9	3.0	3.1	3.3	3.5	3.6	3.4	3.2				
14	2.9	2.8	2.9	3.0	3.1	3.1	3.2	3.3	3.2				
15	3.0	2.8	2.8	2.9	2.9	3.0	2.9	3.0	3.2				
16	3.1	2.9	2.8	2.8	2.8	2.9	2.8	2.7	3.1				
17	3.6	3.4	2.9	2.8	2.8	2.8	2.7	2.4	2.8				
18	3.8	3.7	3.4	3.0	2.8	2.7	2.6	2.5	2.6				
19	3.9	3.8	3.7	3.5	3.0	2.7	2.6	2.5	2.5				
20	4.0	3.9	3.9	3.7	3.5	2.9	2.6	2.5	2.5				
21	3.9	3.9	3.9	3.8	3.6	3.3	2.7	2.4	2.5				
22	3.5	3.8	3.9	3.8	3.7	3.5	3.1	2.6	2.5				
23	3.3	3.4	3.7	3.8	3.8	3.5	3.3	3.0	2.6				
Sum	81.7	80.9	80.6	80.3	78.5	75.9	72.0	66.9	65.3	682.1			
									216 H.H.				
Date	Time	H.W.	L.W.	Date	Time	H.W.	L.W.	Date	Time	H.W.	L.W.		
Aug. 23rd	1:45 A.M.		+1.0 3.0	Aug. 27th	5:25 A.M.	+0.5 2.8		Aug. 31st	8:50 A.M.	+0.2 2.2			
	7:00 A.M.	+1.8 3.8			10:30 A.M.	+1.8 3.8			2:10 P.M.	+1.2 3.2	+0.5 2.5		
	2:15 P.M.		+0.9 2.9		5:45 P.M.	+0.8 2.8			9:15 P.M.				
	8:00 P.M.	+2.0 4.0			11:00 P.M.	+1.5 3.5							
Aug. 24th	2:05 A.M.	+1.0 3.0		Aug. 28th	6:00 A.M.	+0.8 2.8							
	7:55 A.M.	+1.8 3.8			11:45 A.M.	+1.8 3.8							
	3:05 P.M.	+0.8 2.8			6:45 P.M.	+0.7 2.7							
	8:50 P.M.	+1.9 3.9			11:35 P.M.	+1.5 3.5							
Aug. 25th	3:45 A.M.	+0.9 2.9		Aug. 29th	7:05 A.M.	+0.6 2.6							
	8:50 A.M.	+1.9 3.9			12:20 P.M.	+1.6 3.6							
	4:05 P.M.	+0.8 2.8			7:30 P.M.	+0.6 2.6							
	9:20 P.M.	+1.9 3.9		Aug. 30th	12:05 A.M.	+1.3 3.3							
Aug. 26th	4:30 A.M.	+0.9 2.9			7:55 A.M.	+0.3 2.3							
	10:00 A.M.	+1.9 3.9			1:05 P.M.	+1.4 3.4							
	4:45 P.M.	+0.8 2.8			8:55 P.M.	+0.4 2.4							
	10:05 P.M.	+1.8 3.8		Aug. 31st	12:50 A.M.	+1.1 3.1							
		(8) 31.0	(8) 23.1			(8) 28.3	(8) 21.0						

Month of August  
 744 H.H. = 2121.9 = mean of 2.85 M.W.L. or +0.85 M.S.L. Datum  
 60 High Waters = 198.0 or mean of 3.30 M.H.W. or +1.30 " " "  
 60 Low " = 146.5 " " 2.44 M.L.W. or +0.44 " " "  
 Mean Range of Tide = 0.86 ft.  
 Extreme " " " = 2.1 ft.  
 Highest High Water this period = +2.0 M.S.L.  
 Lowest Low Water " " = -0.1 "

(1) 3.2 (2) 4.7



Sheet 14

# Hourly Heights - Mile Hammock Bay

September 1953

Month and Day	Sept 1	2	3	4	5	6	7	8	9	10	11		
Day of Series	130	131	132	133	134	135	136	137	138	139	140		
Hour	H.H.	H.H.											
0	2.0	2.5	2.2	2.4	2.6	2.6	2.7	2.6	2.9	3.1	3.2		
1	3.0	2.8	2.5	2.4	2.6	2.6	2.6	2.5	2.8	2.9	3.0		
2	3.0	2.9	2.7	2.7	2.5	2.6	2.5	2.5	2.7	2.8	2.9		
3	3.0	2.9	2.8	2.9	2.8	2.6	2.5	2.5	2.6	2.7	2.8		
4	2.8	2.8	2.8	3.0	3.0	2.9	2.7	2.5	2.6	2.7	2.7		
5	2.6	2.6	2.8	3.0	3.1	3.1	3.0	2.9	2.8	2.7	2.7		
6	2.5	2.7	2.7	3.0	3.2	3.2	3.1	3.1	3.2	3.0	2.9		
7	2.4	2.8	2.5	3.0	3.1	3.3	3.2	3.3	3.3	3.2	3.2		
8	2.3	2.8	2.3	2.7	3.0	3.2	3.2	3.4	3.4	3.4	3.3		
9	2.3	2.1	2.2	2.5	2.7	3.0	3.2	3.2	3.5	3.5	3.5		
10	2.3	2.1	2.2	2.4	2.6	2.8	2.9	3.2	3.5	3.6	3.6		
11	2.4	2.1	2.1	2.4	2.5	2.7	2.8	2.9	3.3	3.5	3.6		
12	2.8	2.3	2.1	2.3	2.4	2.6	2.6	2.7	3.0	3.3	3.5		
13	3.0	2.7	2.5	2.3	2.4	2.5	2.5	2.6	2.9	3.0	3.2		
14	3.1	2.8	2.7	2.6	2.4	2.4	2.4	2.6	2.7	2.9	2.8		
15	3.1	2.9	2.9	2.9	2.7	2.5	2.4	2.5	2.7	2.8	2.7		
16	3.1	3.0	3.0	3.1	3.0	2.9	2.6	2.5	2.7	2.8	2.7		
17	2.9	3.0	3.1	3.2	3.1	3.2	2.9	2.9	2.8	2.7	2.7		
18	2.7	2.9	3.1	3.3	3.2	3.3	3.1	3.1	3.1	2.9	2.8		
19	2.6	2.6	3.1	3.3	3.3	3.4	3.2	3.3	3.3	3.2	3.0		
20	2.5	2.4	2.8	3.1	3.3	3.4	3.2	3.3	3.3	3.3	3.1		
21	2.4	2.4	2.6	2.9	3.1	3.2	3.2	3.4	3.5	3.4	3.2		
22	2.4	2.3	2.5	2.7	2.8	3.0	3.0	3.4	3.5	3.4	3.3		
23	2.4	2.3	2.4	2.6	2.7	2.8	2.9	3.1	3.4	3.4	3.3		
Sum	64.6	61.3	62.6	66.7	68.1	69.8	68.5	70.2	73.6	74.2	73.7		
												264 H.H. = 753.3	
Date	Time	H.W.	L.W.	Date	Time	H.W.	L.W.	Date	Time	H.W.	L.W.		
Sept. 1st	1:40 A.M.	+1.0	3.0	Sept. 5th	1:50 A.M.	+0.5	2.5	Sept. 9th	3:35 A.M.	+1.5	3.5	+0.6	2.6
	9:50 A.M.				6:10 A.M.	+1.2	3.2		9:30 A.M.	+1.5	3.5	+0.7	2.7
	3:00 P.M.	+1.1	3.1		11:25 P.M.	+0.4	2.4		3:40 P.M.	+1.5	3.5	+0.7	2.7
Sept. 2nd	10:45 P.M.			Sept. 6th	7:25 P.M.	+1.3	3.3	Sept. 10th	7:55 P.M.	+1.5	3.5	+0.7	2.7
	2:30 A.M.	+0.9	2.9		2:05 A.M.	+0.6	2.6		4:10 A.M.	+1.6	3.6	+0.8	2.8
	10:30 A.M.				7:15 A.M.	+1.3	3.3		10:00 A.M.	+1.6	3.6	+0.8	2.8
	9:30 P.M.	+1.0	3.0		2:20 P.M.	+0.4	2.4		4:40 P.M.	+1.4	3.4	+0.7	2.7
Sept. 3rd	11:45 P.M.			Sept. 7th	7:25 P.M.	+1.4	3.4	Sept. 11th	10:10 P.M.	+1.4	3.4	+0.7	2.7
	4:35 A.M.	+0.8	2.8		2:40 A.M.	+0.5	2.5		4:30 A.M.	+1.6	3.6	+0.7	2.7
	11:25 A.M.				8:10 A.M.	+1.3	3.3		10:40 A.M.	+1.6	3.6	+0.7	2.7
Sept. 4th	5:55 P.M.	+1.1	3.1	Sept. 8th	2:45 P.M.	+0.4	2.4		4:55 P.M.	+1.3	3.3	+0.7	2.7
	12:05 A.M.				8:15 P.M.	+1.2	3.2		10:40 P.M.	+1.3	3.3		
	5:45 A.M.	+1.0	3.0		3:00 A.M.	+0.5	2.5						
	12:15 P.M.				5:45 A.M.	+1.4	3.4						
	6:45 P.M.	+1.3	3.3		3:20 P.M.	+0.5	2.5						
					9:10 P.M.	+1.4	3.4						
		(8)	24.2	(7)	15.5	(8)	26.5	(8)	19.8	(6)	20.9	(6)	16.1



Hourly Heights - Mile Hammock Bay

September 1953

Month and Day	No. Day	13	14	15	16	17	18	19	20	21	22
Day of Service	Sept 12	142	143	144	145	146	147	148	149	150	151
Hour	H. H.	H. H.									
0	3.2	3.4	3.2	3.2	3.1	3.1	3.0	2.8	2.8	3.2	3.1
1	3.0	3.1	3.1	3.0	3.1	3.1	3.2	3.0	2.9	3.2	3.0
2	2.8	3.0	2.8	3.0	3.0	3.1	3.2	3.2	3.2	3.2	3.0
3	2.7	2.8	2.7	2.9	2.7	3.1	3.2	3.3	3.4	3.3	3.1
4	2.7	2.7	2.6	2.7	2.7	3.0	3.2	3.3	3.5	3.6	3.4
5	2.7	2.7	2.6	2.7	2.6	2.8	3.1	3.3	3.6	3.8	3.7
6	2.7	2.7	2.6	2.7	2.5	2.7	3.0	3.2	3.6	3.9	3.8
7	2.9	2.7	2.6	2.6	2.5	2.6	2.9	3.0	3.6	3.8	3.9
8	3.2	3.0	2.7	2.6	2.4	2.6	2.8	2.9	3.3	3.7	3.9
9	3.3	3.2	3.0	2.7	2.4	2.6	2.7	2.7	3.2	3.4	3.8
10	3.4	3.3	3.1	3.0	2.6	2.6	2.6	2.6	3.0	3.3	3.6
11	3.5	3.3	3.3	3.2	3.0	2.8	2.6	2.5	3.0	3.2	3.5
12	3.5	3.4	3.4	3.3	3.2	3.0	2.8	2.5	2.9	3.1	3.1
13	3.2	3.4	3.4	3.3	3.2	3.2	3.1	2.8	3.0	3.0	3.1
14	2.9	3.1	3.3	3.3	3.3	3.3	3.2	3.1	3.2	2.9	3.0
15	2.7	2.9	3.1	3.2	3.3	3.3	3.3	3.2	3.5	3.2	2.9
16	2.7	2.8	2.8	2.9	3.2	3.3	3.4	3.4	3.7	3.5	3.3
17	2.6	2.8	2.8	2.8	3.0	3.3	3.4	3.5	3.9	3.7	3.6
18	2.6	2.7	2.5	2.7	2.9	3.1	3.4	3.6	4.0	3.9	3.9
19	2.8	2.7	2.5	2.7	2.8	2.9	3.2	3.5	4.0	3.9	4.0
20	3.1	2.8	2.8	2.7	2.7	2.8	3.0	3.3	3.8	3.9	4.1
21	3.2	2.9	2.9	2.7	2.7	2.8	2.9	3.0	3.5	3.6	4.0
22	3.3	3.1	3.1	2.7	2.7	2.8	2.8	2.9	3.4	3.3	3.7
23	3.4	3.1	3.2	2.9	2.9	2.8	2.8	2.8	3.3	3.2	3.4
<b>Sum</b>	72.1	71.6	70.7	69.7	68.5	70.7	72.8	73.4	81.3	82.7	83.7
										264 H. H.	= 817.2
Date	Time	H. W.	L. W.	Date	Time	H. W.	L. W.	Date	Time	H. W.	L. W.
Sept. 12 <sup>th</sup>	4:55 A.M.		+0.7 2.7	Sept. 16	12:40 A.M.	+1.1 3.1		Sept. 20	6:00 A.M.	+1.6 3.6	
	11:30 A.M.	+1.5 3.5			8:40 A.M.		+0.4 2.4		12:25 P.M.		+0.9 2.9
	5:10 P.M.		+0.6 2.6		2:35 P.M.	+1.3 3.3			6:45 P.M.	+2.0 4.0	
Sept. 13 <sup>th</sup>	11:30 P.M.	+1.4 3.4		Sept. 17	9:35 P.M.		+0.7 2.7	Sept. 21	1:50 A.M.		+1.2 3.2
	6:00 A.M.		+0.7 2.7		1:45 A.M.	+1.1 3.1			6:30 A.M.	+1.9 3.9	
	12:30 P.M.	+1.4 3.4			9:15 A.M.		+0.6 2.6		1:25 P.M.		+0.9 2.9
Sept. 14 <sup>th</sup>	6:45 P.M.		+0.7 2.7	Sept. 18	4:00 P.M.	+1.3 3.3		Sept. 22	7:20 P.M.	+1.9 3.9	
	12:10 A.M.	+1.2 3.2			9:55 P.M.		+0.8 2.8		1:45 A.M.		+1.0 3.0
	6:10 P.M.		+0.6 2.6		2:50 A.M.	+1.2 3.2			7:45 P.M.	+1.9 3.9	
	12:40 P.M.	+1.4 3.4			10:40 A.M.		+0.6 2.6		2:40 P.M.		+0.9 2.9
Sept. 15 <sup>th</sup>	6:55 P.M.		+0.8 2.8		5:05 P.M.	+1.4 3.4			8:05 P.M.	+2.1 4.1	
	12:10 A.M.	+1.2 3.2		Sept. 19	11:25 P.M.		+0.8 2.8				
	8:00 A.M.		+0.6 2.6		7:50 A.M.	+1.3 3.3					
	1:25 P.M.	+1.3 3.3			11:40 A.M.		+0.5 2.5				
	8:20 P.M.		+0.7 2.7		6:10 P.M.	+1.6 3.6					
					11:20 P.M.		+0.8 2.8				
		(1) 23.4	(8) 21.4			(8) 26.3	(9) 21.2			(6) 23.4	(5) 14.9



Sheet #16

# Hourly Heights — Mile Hammock Bay September 1953

Month and Day		Mo	Day	24	25	26	27	28	29	30						
Day of Series		Sept.	23	152	153	154	155	156	157	158	159					
Hour		H.	H.													
0		3.3	3.4	3.3	3.4	3.6	3.9	3.7	3.5							
1		3.2	3.2	3.1	3.2	3.4	3.7	3.7	3.5							
2		3.1	3.1	3.0	3.1	3.1	3.5	3.6	3.5							
3		3.1	3.1	2.9	2.9	3.0	3.4	3.4	3.4							
4		3.2	3.0	2.8	2.9	2.9	3.3	3.3	3.2							
5		3.4	3.2	2.8	2.8	2.9	3.2	3.2	3.1							
6		3.9	3.6	3.1	2.8	2.9	3.2	3.1	3.0							
7		4.1	3.9	3.5	3.1	3.0	3.1	3.0	2.9							
8		4.2	4.1	3.7	3.5	3.5	3.1	3.0	2.8							
9		4.2	4.2	3.9	3.7	3.9	3.4	3.0	2.8							
10		4.0	4.1	4.0	3.9	4.0	3.8	3.3	2.8							
11		3.6	3.8	3.9	3.9	4.2	3.9	3.5	3.1							
12		3.4	3.4	3.6	3.8	4.2	4.0	3.6	3.4							
13		3.3	3.3	3.3	3.5	4.0	4.0	3.7	3.5							
14		3.2	3.1	3.1	3.2	3.7	3.9	3.7	3.5							
15		3.1	3.0	3.1	3.1	3.7	3.7	3.6	3.6							
16		3.1	2.9	2.9	3.0	3.6	3.5	3.4	3.5							
17		3.3	2.9	2.9	2.9	3.5	3.4	3.3	3.4							
18		3.7	3.2	2.9	2.9	3.5	3.4	3.2	3.2							
19		3.9	3.6	3.3	2.9	3.4	3.3	3.1	3.1							
20		4.1	3.8	3.6	3.3	3.4	3.2	3.1	3.0							
21		4.1	3.9	3.7	3.5	3.5	3.1	3.1	2.9							
22		3.9	3.9	3.8	3.4	3.8	3.4	3.1	2.9							
23		3.6	3.6	3.7	3.6	4.0	3.6	3.3	2.9							
Sum		86.2	83.3	79.9	78.5	84.7	84.0	80.0	75.5	192 H.H. = 652.1						
Date		Time	H.W.	L.W.	Date	Time	H.W.	L.W.								
Sept. 23		3:15 A.M.		+1.1	3.1	Sept. 27	5:55 A.M.	+0.9	2.9							
		8:40 A.M.	+2.2	4.2			11:40 A.M.	+2.2	4.2							
		3:45 P.M.		+1.1	3.1		7:55 P.M.	+1.4	3.4							
Sept. 24		8:50 P.M.	+2.1	4.1		Sept. 28	11:15 P.M.	+2.0	4.0							
		4:05 A.M.		+1.0	3.0		7:30 A.M.	+1.1	3.1							
		9:10 A.M.	+2.2	4.2			12:55 P.M.	+2.0	4.0							
		4:40 P.M.		+0.9	2.9		8:45 P.M.	+1.1	3.1							
Sept. 25		9:25 P.M.	+1.9	3.9		Sept. 29	12:40 A.M.	+1.7	3.7							
		4:45 A.M.		+0.8	2.8		8:30 A.M.	+1.0	3.0							
		10:20 A.M.	+2.0	4.0			1:40 P.M.	+1.7	3.7							
		5:25 P.M.		+0.9	2.9		9:30 P.M.	+1.1	3.1							
Sept. 26		10:20 P.M.	+1.8	3.8		Sept. 30	1:25 A.M.	+1.5	3.5							
		5:30 A.M.		+0.8	2.8		9:30 A.M.	+0.8	2.8							
		10:55 A.M.	+1.9	3.9			2:50 P.M.	+1.6	3.6							
		6:40 P.M.		+0.9	2.9		10:35 P.M.	+0.9	2.9							
		11:20 P.M.	+1.6	3.6												
			(8)	31.7(8)	23.5		(7)	26.7(8)	24.3							

Month of September

720 H.H. = 2222.6 = mean of 3.09 M. Water + 1.09 M. S. & D. from  
 58 High Waters = 203.1 = " " 3.50 M. H. Water + 1.50 M. S. & D. "  
 58 Low " = 157.0 = " " 2.71 M. L. Water + 0.71 M. S. & D. "  
 Mean Range of Tide = 0.79  
 Extreme " " " = 2.1  
 Highest H.W. this period = +2.2  
 Lowest L.W. " " " = +0.1





Sheet #17

# Hourly Heights - Mile Hammock Bay

October - 1953

Month and Day	Oct. 1	2	3	4	5	6	7	8	9	10	11		
Day of Series	160	161	162	163	164	165	166	167	168	169	170		
H Hour	H.H.	H.H.											
0	3.0	2.7	2.7	2.8	2.9	3.0	3.1	3.1	3.2	3.2	3.4		
1	3.3	2.9	2.7	2.8	2.9	2.9	3.0	2.9	3.0	3.1	3.3		
2	3.3	3.1	3.0	3.0	2.9	2.9	2.9	2.9	2.9	3.0	3.2		
3	3.3	3.2	3.2	3.2	3.1	3.1	2.9	2.9	2.9	2.9	3.1		
4	3.2	3.2	3.3	3.3	3.3	3.4	3.2	2.9	2.9	2.9	3.1		
5	3.0	3.2	3.3	3.4	3.5	3.5	3.5	3.0	2.9	2.9	3.1		
6	2.9	3.0	3.3	3.5	3.6	3.6	3.6	3.2	3.1	2.9	3.1		
7	2.8	2.9	3.2	3.5	3.6	3.7	3.7	3.4	3.3	3.1	3.2		
8	2.7	2.7	3.0	3.3	3.6	3.7	3.7	3.6	3.4	3.3	3.3		
9	2.7	2.6	2.8	3.1	3.4	3.7	3.7	3.7	3.5	3.5	3.4		
10	2.6	2.6	2.8	2.9	3.2	3.4	3.6	3.7	3.6	3.7	3.5		
11	2.6	2.5	2.7	2.8	2.9	3.1	3.3	3.5	3.6	3.8	3.7		
12	2.7	2.6	2.6	2.7	2.9	3.1	3.2	3.2	3.4	3.7	3.8		
13	3.1	2.9	2.7	2.6	2.8	3.0	3.1	3.1	3.1	3.5	3.7		
14	3.2	3.1	3.0	2.8	2.9	3.0	3.0	3.0	3.1	3.3	3.4		
15	3.2	3.2	3.2	3.1	3.0	3.0	3.0	3.0	3.0	3.2	3.3		
16	3.3	3.3	3.3	3.3	3.3	3.3	3.0	2.9	3.0	3.2	3.3		
17	3.2	3.4	3.4	3.4	3.4	3.5	3.3	3.0	3.0	3.1	3.3		
18	3.1	3.4	3.4	3.5	3.5	3.6	3.5	3.1	3.0	3.1	3.3		
19	2.9	3.2	3.4	3.5	3.6	3.7	3.6	3.2	3.1	3.2	3.3		
20	2.8	2.9	3.2	3.4	3.6	3.7	3.6	3.4	3.2	3.3	3.4		
21	2.7	2.8	3.0	3.2	3.5	3.7	3.6	3.5	3.3	3.4	3.4		
22	2.7	2.7	2.9	3.0	3.3	3.5	3.5	3.5	3.4	3.4	3.5		
23	2.6	2.7	2.8	2.9	3.1	3.3	3.2	3.3	3.4	3.5	3.6		
Sum	70.9	70.8	72.9	75.0	77.8	80.4	79.8	77.0	76.3	78.2	80.7		
											264 H.H. = 939.8		
Date	Time	H.W.	L.W.	Date	Time	H.W.	L.W.	Date	Time	H.W.	L.W.		
Oct. 1 <sup>st</sup>	2:55 A.M.	+1.3	3.3	Oct. 5 <sup>th</sup>	11:30 A.M.	+0.9	2.9	Oct. 9 <sup>th</sup>	4:00 A.M.	+0.9	2.9		
	10:50 A.M.		+0.6	2.6		+1.6	3.6		10:40 A.M.	+1.6	3.6		
	3:50 P.M.	+1.3	3.3		1:20 P.M.		+0.8	2.8		4:25 P.M.	+1.0	3.0	
Oct. 2 <sup>nd</sup>	11:25 P.M.		+0.6	2.6	Oct. 6 <sup>th</sup>	7:45 P.M.	+1.4	3.4	Oct. 10 <sup>th</sup>	10:55 P.M.	+1.4	3.4	
	4:05 A.M.	+1.2	3.2		1:45 A.M.		+0.9	2.9		4:45 A.M.	+0.9	2.9	
	11:15 A.M.		+0.5	2.5		8:00 A.M.	+1.7	3.7		11:25 A.M.	+1.3	3.3	
	5:15 P.M.	+1.4	3.4		2:35 P.M.		+1.0	3.0		5:50 P.M.	+1.1	3.1	
Oct. 3 <sup>rd</sup>	11:50 P.M.		+0.7	2.7	Oct. 7 <sup>th</sup>	5:45 P.M.	+1.7	3.7	Oct. 11 <sup>th</sup>	11:40 P.M.	+1.5	3.5	
	5:40 A.M.	+1.3	3.3		2:20 A.M.		+0.9	2.9		4:45 A.M.	+1.1	3.1	
	12:05 P.M.		+0.6	2.6		8:10 A.M.	+1.7	3.7		12:20 P.M.	+1.8	3.8	
Oct. 4 <sup>th</sup>	6:20 P.M.	+1.4	3.4		3:35 P.M.		+1.0	3.0		5:35 P.M.	+1.3	3.3	
	12:10 A.M.		+0.8	2.8	Oct. 8 <sup>th</sup>	8:30 P.M.	+1.6	3.6		11:55 P.M.	+1.4	3.4	
	6:15 A.M.	+1.5	3.5		3:20 A.M.		+0.9	2.9					
	1:00 P.M.		+0.6	2.6		9:40 A.M.	+1.7	3.7					
	7:00 P.M.	+1.5	3.5		4:15 P.M.		+0.9	2.9					
					9:40 P.M.	+1.5	3.5						
		(3)	26.9	(7)	18.4			(8)	23.3	(6)	21.7	(6)	18.3



Sheet #18

Hourly Heights — Mile Hammock Bay

October 1953

Month and Day	Oct. 12	13	14	15	16	17	18	19	20	21	22
Day of Series	171	172	173	174	175	176	177	178	179	180	181
H.H.											
0	3.6	3.4	3.3	3.3	3.0	2.9	2.7	2.8	2.8	2.9	2.9
1	3.4	3.3	3.4	3.4	3.1	3.1	2.9	2.8	2.7	2.8	2.8
2	3.3	3.2	3.3	3.3	3.2	3.2	3.1	3.0	2.8	2.8	2.7
3	3.2	3.1	3.1	3.1	3.2	3.3	3.3	3.3	3.1	2.8	2.7
4	3.2	3.0	3.1	3.0	3.0	3.3	3.4	3.4	3.3	3.1	2.8
5	3.2	3.0	3.0	2.9	2.9	3.1	3.4	3.5	3.5	3.4	3.1
6	3.1	2.9	3.0	2.9	2.8	2.9	3.2	3.6	3.6	3.6	3.4
7	3.1	2.9	2.9	2.8	2.7	2.8	3.0	3.5	3.6	3.7	3.7
8	3.2	2.9	3.0	2.8	2.7	2.7	2.9	3.2	3.1	3.5	3.8
9	3.4	3.0	3.0	2.8	2.6	2.7	2.8	3.1	3.2	3.6	3.9
10	3.5	3.2	3.2	2.9	2.6	2.7	2.7	3.0	3.1	3.2	3.7
11	3.6	3.3	3.4	3.0	2.8	2.6	2.7	2.9	3.0	3.1	3.4
12	3.7	3.4	3.5	3.2	3.0	2.7	2.7	2.6	2.9	3.0	3.2
13	3.7	3.5	3.6	3.4	3.2	3.0	2.8	2.6	2.8	2.9	3.1
14	3.4	3.4	3.6	3.4	3.3	3.2	3.0	2.7	2.8	2.8	3.0
15	3.3	3.2	3.5	3.4	3.3	3.3	3.2	3.0	2.9	2.8	2.9
16	3.2	3.2	3.3	3.2	3.4	3.3	3.4	3.2	3.1	2.9	2.9
17	3.2	3.1	3.1	3.1	3.3	3.4	3.5	3.4	3.4	3.1	3.2
18	3.2	3.1	3.1	3.0	3.0	3.3	3.5	3.5	3.6	3.4	3.5
19	3.2	3.1	3.1	2.9	2.9	3.0	3.3	3.6	3.6	3.5	3.7
20	3.2	3.1	3.0	2.9	2.8	2.9	3.0	3.3	3.6	3.6	3.8
21	3.2	3.1	3.0	2.9	2.8	2.8	2.9	3.0	3.2	3.4	3.8
22	3.3	3.2	3.0	2.8	2.7	2.7	2.9	2.9	3.0	3.2	3.6
23	3.3	3.2	3.1	2.9	2.7	2.7	2.8	2.8	3.0	3.0	3.2
Sum	79.7	75.8	76.6	73.3	71.0	71.5	73.1	74.7	76.3	76.4	78.8
											264 H.H. = 827.2
Date	Time	H.W.	L.W.	Date	Time	H.W.	L.W.	Date	Time	H.W.	L.W.
Oct. 12 <sup>th</sup>	6:40 A.M.		+1.1 3.1	Oct. 16 <sup>th</sup>	2:25 A.M.	+1.2 3.2			7:05 A.M.	+1.6 3.6	
	12:45 P.M.	+1.7 3.7			9:35 A.M.	+0.6 2.6			1:55 P.M.	+0.8 2.8	
Oct. 13 <sup>th</sup>	6:30 P.M.		+1.2 3.2		3:50 P.M.	+1.4 3.4		Oct. 21 <sup>st</sup>	7:15 P.M.	+1.6 3.6	
	12:00 A.M.	+1.4 3.4			10:45 P.M.	+0.7 2.7			2:25 A.M.	+0.8 2.8	
	7:05 A.M.		+0.9 2.9	Oct. 17 <sup>th</sup>	3:35 A.M.	+1.3 3.3			7:55 A.M.	+1.8 3.8	
	1:25 P.M.	+1.5 3.5			10:50 A.M.	+0.6 2.6			3:05 P.M.	+0.8 2.8	
Oct. 14 <sup>th</sup>	7:20 P.M.		+1.1 3.1		4:50 P.M.	+1.4 3.4		Oct. 22 <sup>nd</sup>	8:10 P.M.	+1.6 3.6	
	1:20 A.M.	+1.4 3.4			11:30 P.M.	+0.7 2.7			2:45 A.M.	+0.7 2.8	
	7:45 A.M.		+0.9 2.9	Oct. 18 <sup>th</sup>	4:45 A.M.	+1.4 3.4			9:05 A.M.	+1.9 3.9	
	2:05 P.M.	+1.6 3.6			11:40 A.M.	+0.7 2.7			3:45 P.M.	+0.9 2.8	
Oct. 15 <sup>th</sup>	9:25 P.M.		+1.0 3.0		6:00 P.M.	+1.5 3.5			8:45 P.M.	+1.8 3.8	
	1:30 A.M.	+1.4 3.4		Oct. 19 <sup>th</sup>	12:10 A.M.	+0.8 2.8					
	8:30 A.M.		+0.8 2.8		6:20 A.M.	+1.4 3.4					
	2:35 P.M.	+1.4 3.4			12:45 P.M.	+0.6 2.6					
	10:00 P.M.		+0.8 2.8	Oct. 20 <sup>th</sup>	6:40 P.M.	+1.6 3.6					
					1:00 A.M.	+0.7 2.7					
		(7) 24.4 (8) 23.8				(8) 27.4 (5) 21.4			(6) 22.3 (5) 14.0		



Hourly Heights - Mile Hammocks Bay  
October 1953

Month and Day	Oct. 23	24	25	26	27	28	29	30	31
Day of Series	182	183	184	185	186	187	188	189	190
Mean	H.H.								
0	3.1								
1	3.0								
2	2.9								
3	2.9								
4	2.9								
5	3.1								
6	3.5								
7	3.7								
8	4.0								
9	4.2								
10	4.3								
11	4.1								
12	3.7								
13									
14									
15									
16									
17									
18									
19									
20									
21									
22									
23									
June	45.4			13 H.H. = 45.4					
Date	Time	H.W.	L.W.	Date	Time	H.W.	L.W.		
Oct. 23	3:20 A.M.		+0.9 29						
	10:20 A.M.	+2.3 43							
		(1) 4.3	(1) 2.9						

Month of October  
 541 H.H. = 1712.4 or a mean of 3.175 M.W.L. or +1.175 M.S.L. Datum  
 44 High Waters = 156.1 or a mean of 3.55 M.H.W. or +1.55 M.S.L. "  
 43 Low " = 122.1 " " " 2.84 M.L.W. " +0.84 " "  
 Mean Range of Tide = 0.71 ft.  
 Extreme " " = 1.8 ft.  
 Highest H.W. this period = +2.3  
 Lowest L.W. " " = +0.5

Capitulation  
 After 182 days of observation, from April 1 to October 23: Tide Gauge Zero Date = -2.0 Mean Sea Level  
 4330 Hourly Heights totaled 13,117.1 reduced to mean = 2.80 Mean Water level = +0.80 Mean Sea Level.  
 349 High Waters " 1,134.3 " " " = 3.25 Mean High Water = +1.25 " " "  
 348 Low " " 830.4 " " " = 2.39 " Low " = +0.39 " " "  
 Mean Range of Tide = 0.86 ft. Extreme Range of Tide from -0.7 to +2.3 = 3.0 ft.

Note: \* With a Construction Elevation of -12.5 at Mile Hammocks Bay Basin, there will be 12.89 ft. of water at Mean Low Water and 13.75 ft. at Mean High Water.

