

LIME STORAGE

WATER

MARINE CORPS

# STORAGE/HANDLING EQUIPMENT

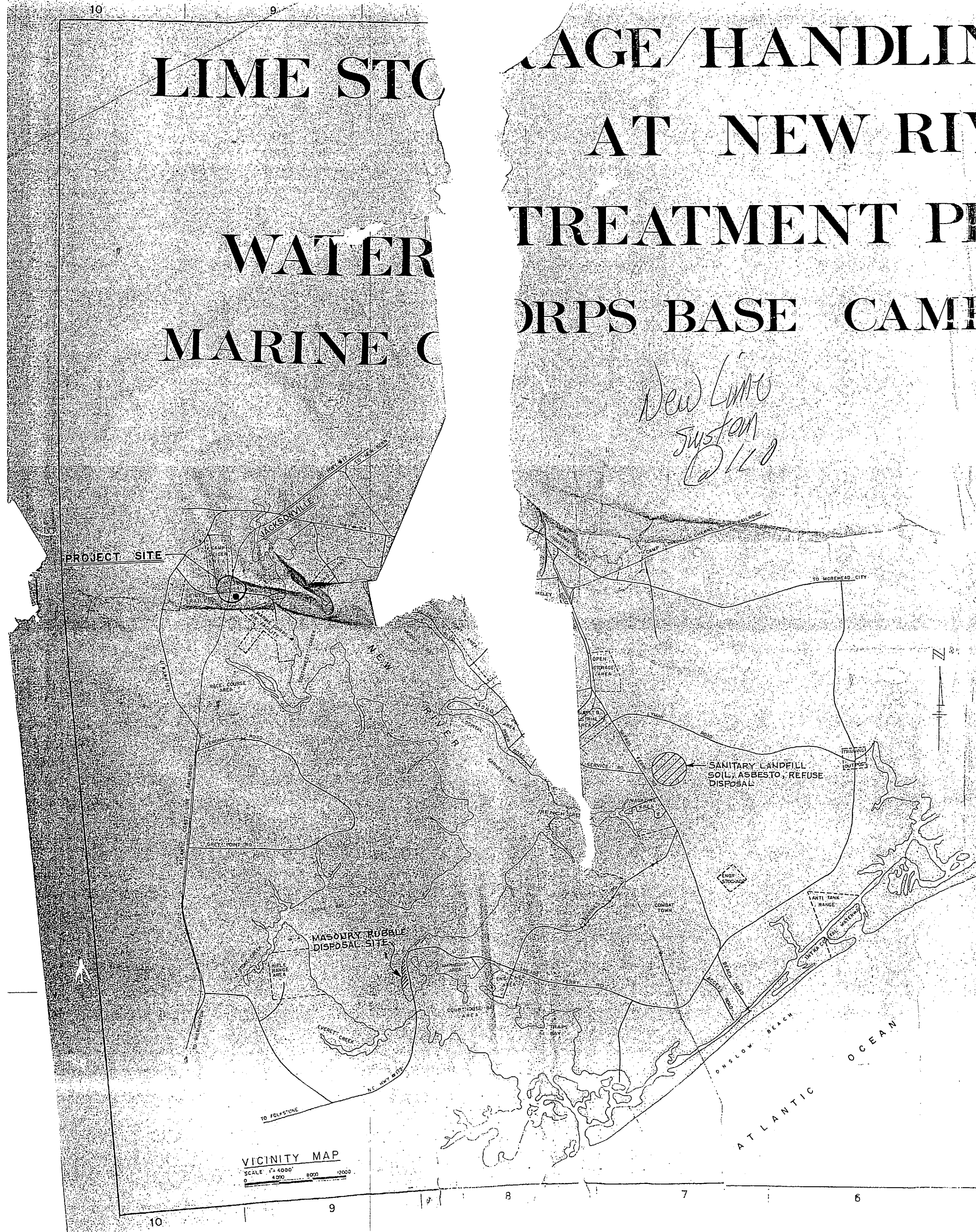
## AT NEW RIVER

### TREATMENT PLANT AS-110

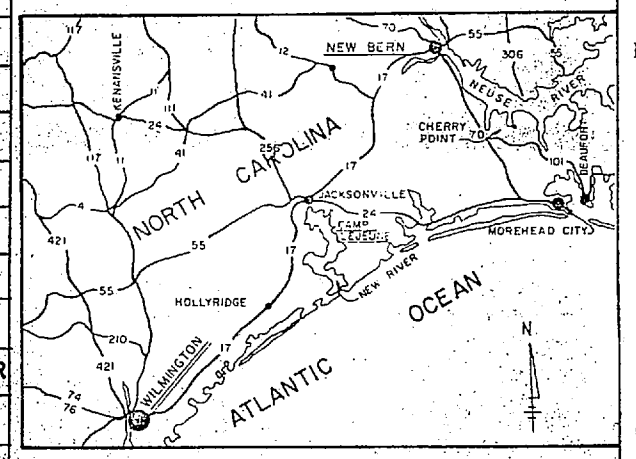
#### MARINE CORPS BASE CAMP LEJEUNE, N. C.

*New Lime  
Just on  
D110*

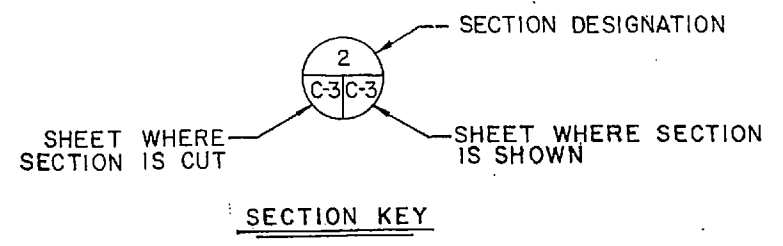
| REVISIONS |             |      |
|-----------|-------------|------|
| NO.       | DESCRIPTION | DATE |
|           |             |      |



| INDEX OF DRAWINGS |         |            |         |  |
|-------------------|---------|------------|---------|--|
| SHEET NO.         | EFD NO. | NAVFAC NO. | TITLE   |  |
| 1                 | C-1     | 179796     | 4079796 | TITLE SHEET                                      |
| 2                 | C-2     | 179797     | 4079797 | PLANS & BORING LOG                               |
| 3                 | C-3     | 179798     | 4079798 | PLAN, SECTIONS & PIPING DIAGRAMS                 |
| 4                 | C-4     | 179799     | 4079799 | MISCELLANEOUS DETAILS                            |
| 5                 | S-1     | 179800     | 4079800 | SILO FOUNDATION, PLANS, SECTIONS AND DETAILS     |
| 6                 | S-2     | 179801     | 4079801 | EXISTING CONDITION BLDG AS-110                   |
| 7                 | S-3     | 179802     | 4079802 | BUILDING SECTIONS AND DETAILS - NEW HOPPER       |
| 8                 | E-1     | 179803     | 4079803 | SITE PLAN, LEGEND, NOTES & SCHEMATICS            |
| 9                 | E-2     | 179804     | 4079804 | PARTIAL FLOOR PLAN, DETAILS, SCHEDULE, DIAGRAMS. |



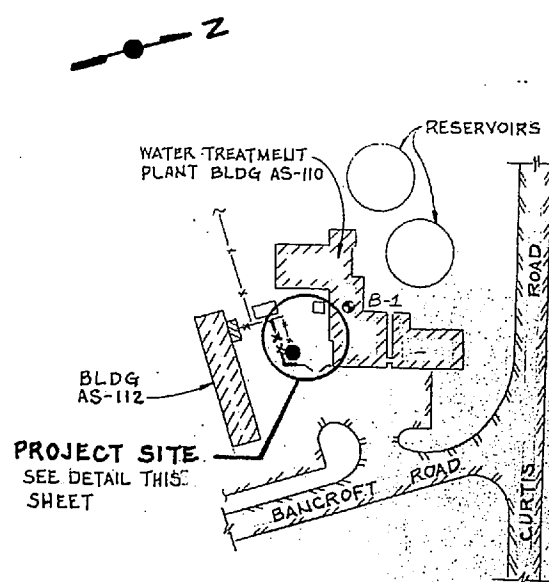
1. THE NEW LIME STORAGE/HANDLING EQUIPMENT SHALL BE FIELD TESTED BY CONTRACTOR. LIME REQUIRED FOR THE TEST SHALL BE PROVIDED BY THE GOVERNMENT.
2. WHERE FLANGES ARE USED FOR CONNECTIONS OR MOUNTINGS, A 1/4" THICK NEOPRENE GASKET SHALL BE PROVIDED.
3. FIELD PAINT METAL SURFACES IN ACCORDANCE WITH SPECIFICATIONS.



|  |   |
|--|---|
| <b>C-1</b>   |   |
| 179796<br>94 TF 2161<br>C.C. SHU<br>C.C.S. DFT<br>Date: <i>9/24/54</i><br><i>Hobbs</i> | DEPARTMENT OF THE NAVY NAVAL FACILITIES ENGINEERING COMMAND<br><b>ATLANTIC DIVISION</b><br>NAVAL STATION NORFOLK, VA.<br>MARINE CORPS BASE CAMP LEJEUNE, N. C.<br><b>LIME STORAGE/HANDLING EQUIPMENT AT NEW RIVER WATER TREATMENT PLANT AS-110 TITLE SHEET</b><br>SITE: F<br>COBT BLDG. NO.: 80091<br>NAVFAC NO.: 4079796<br>GEN. CENTER NO.: N62470-82-B-2161<br>SCALE: 05-82-2161<br>SHEET 1 OF 9 |







SITE PLAN - WATER TREATMENT PLANT @ NEW RIVER  
SCALE: 1" = 80'

BORING NO. B-1 (ORIG. GROUND)  
(ELEV. 18.0)

| DEPTH FT. | DESCRIPTION   | BLOWS |
|-----------|---|-------|
| 0.0       | TOP SOIL TO 0.5 FT. SAND, LIGHT GRAY FINE TO MEDIUM POSSIBLE FILL | 11    |
| 10.0      | SAND, GRAY SILTY FINE   | 5     |
| 20.0      | SAND, LIGHT GRAY FINE TO MEDIUM                                   | 20    |
| 20.0      | SAND, GREENISH GRAY CLAYEY FINE                                   | 3     |
| 20.0      | SAND, GREENISH GRAY SILTY FINE                                    | 4     |
| 30.0      | SAND, LIGHT GRAY CLAYEY AND SHELL FRAGMENTS, PARTIALLY CEMENTED   | 19    |
| 40.0      | SAND, LIGHT GRAY CLAYEY AND SHELL FRAGMENTS, PARTIALLY CEMENTED   | 27    |
| 40.0      | SAND, LIGHT GRAY CLAYEY AND SHELL FRAGMENTS, PARTIALLY CEMENTED   | 20    |
| 50.0      | SAND, GREENISH GRAY SILTY, TRACE OF SHELLS                        | 32    |
| 50.0      | SAND, GREENISH GRAY SILTY, TRACE OF SHELLS                        | 25    |

BORING TERMINATED

WATER DATA:  
7.0 FT. AT COMPLETION  
4.0 FT. AFTER 24 HOURS

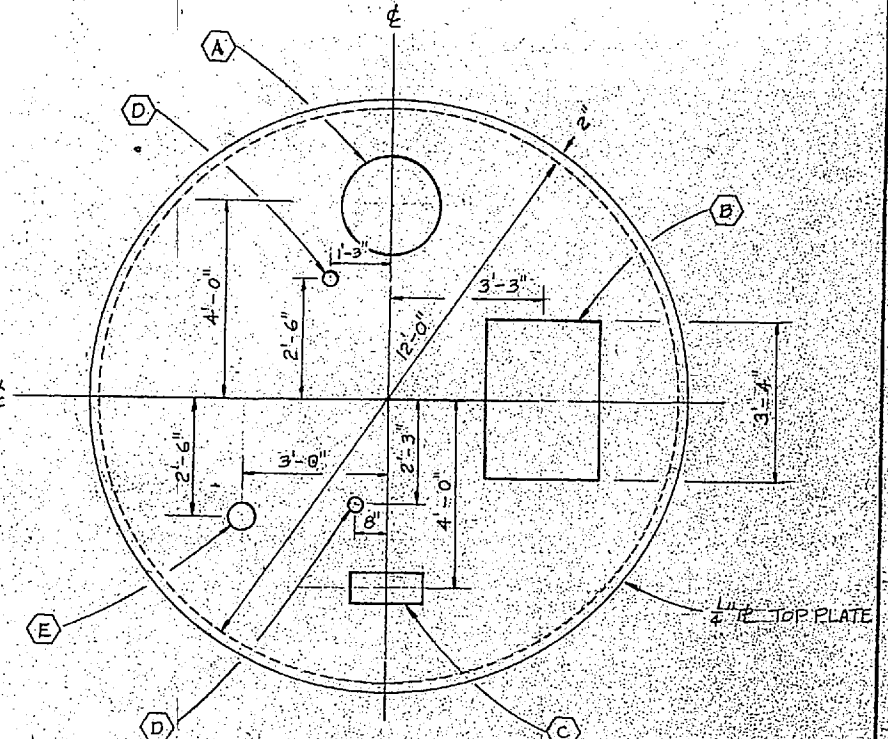
BORING LOG  
SCALE: 1" = 10'

BORING NOTES

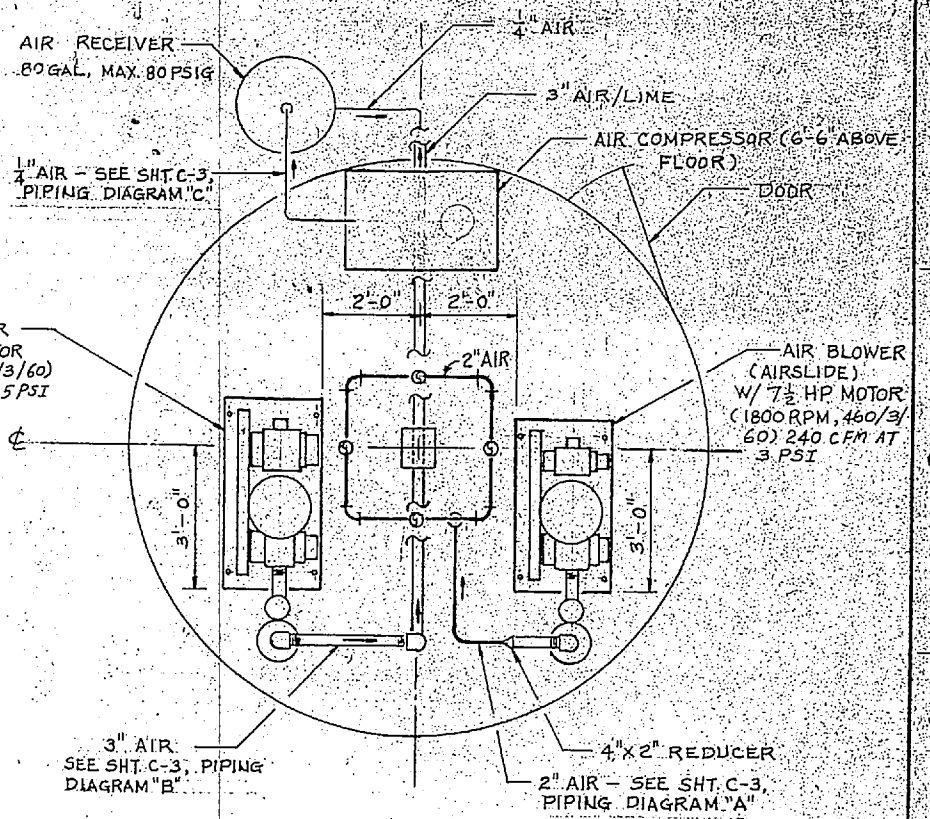
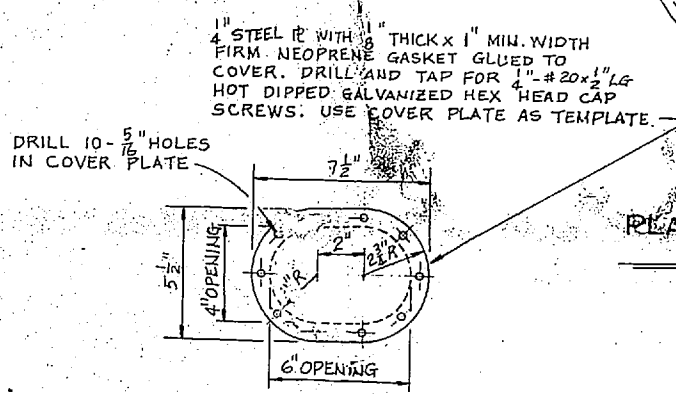
- BORING MADE BY MEANS OF CONTINUOUS-FLIGHT, HOLLOW-STEM AUGER.
- BLOWS COLUMN INDICATES DEPTH OF SAMPLE AND NUMBER OF BLOWS REQUIRED TO DRIVE A 2" O.D. SPLIT SPOON SAMPLER ONE FOOT INTO UNDISTURBED SOIL WITH A 140 LB. HAMMER FALLING 30" AS PER ASTM TEST D-1586-67.
- ALL DEPTHS AND LOCATIONS ARE APPROXIMATE.
- BORING DRILLED BY FROELING & ROBERTSON, INC. MAY 23, 1973.

OPENINGS ON TOP PLATE OF SILO

- A 24" φ FOR MANHOLE
- B 3'-4" x 2'-4" FOR DUST COLLECTOR
- C 18" x 8" FOR INLET BOX
- D 4" φ FOR AIR VENT & RETURN AIR
- E 7 1/2" φ FOR HIGH LEVEL INDICATOR



PLAN - OPENINGS ON TOP PLATE OF HOPPER  
SCALE: 1/2" = 1'-0"

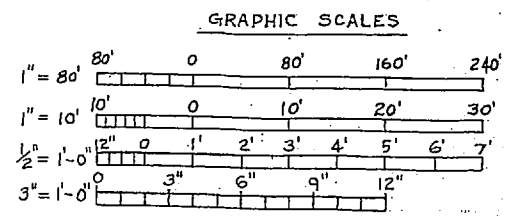


LEGEND

- 17.79 SPOT ELEVATION
- X-X- EXISTING FENCE (7' CHAIN LINK)
- XXXXXX FENCE TO BE RELOCATED
- XX-XX- RELOCATED FENCE
- EXISTING ROAD
- BUILDING
- FW FRESH WATER
- RW RAW WATER
- SAN SANITARY DRAIN
- SD STORM DRAIN
- SOIL BORING

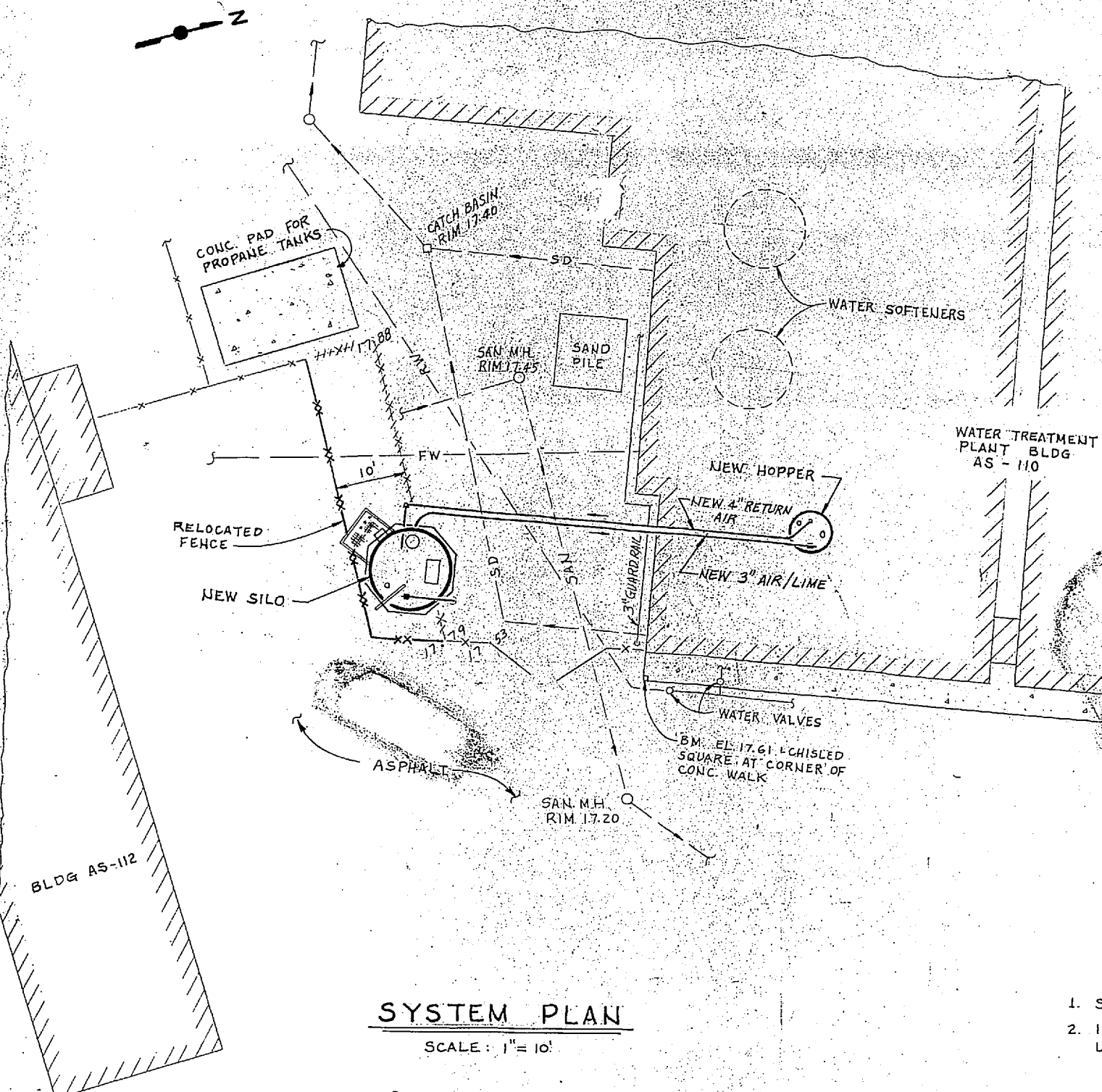
NOTES FOR SHT. C-2

- SEE SHT. C-1 FOR GENERAL NOTES.
- ITEMS ON "SYSTEM PLAN" ARE EXISTING UNLESS NOTED AS NEW



SYSTEM PLAN

SCALE: 1" = 10'



| REVISIONS |             |      |
|-----------|-------------|------|
| NO.       | DESCRIPTION | DATE |
|           |             |      |

C-2

EPD DWG. NO. 179797  
WORK REG. NO. 94 TF 2161  
DES. C. C. SHU  
DRWN. C. C. S.

DEPARTMENT OF THE NAVY  
NAVAL FACILITIES ENGINEERING COMMAND  
ATLANTIC DIVISION  
NAVAL STATION  
MARINE CORPS BASE CAMP LEJEUNE, N.C.  
LIME STORAGE/HANDLING EQUIPMENT  
AT NEW RIVER  
WATER TREATMENT PLANT AS-110  
PLANS & BORING LOG

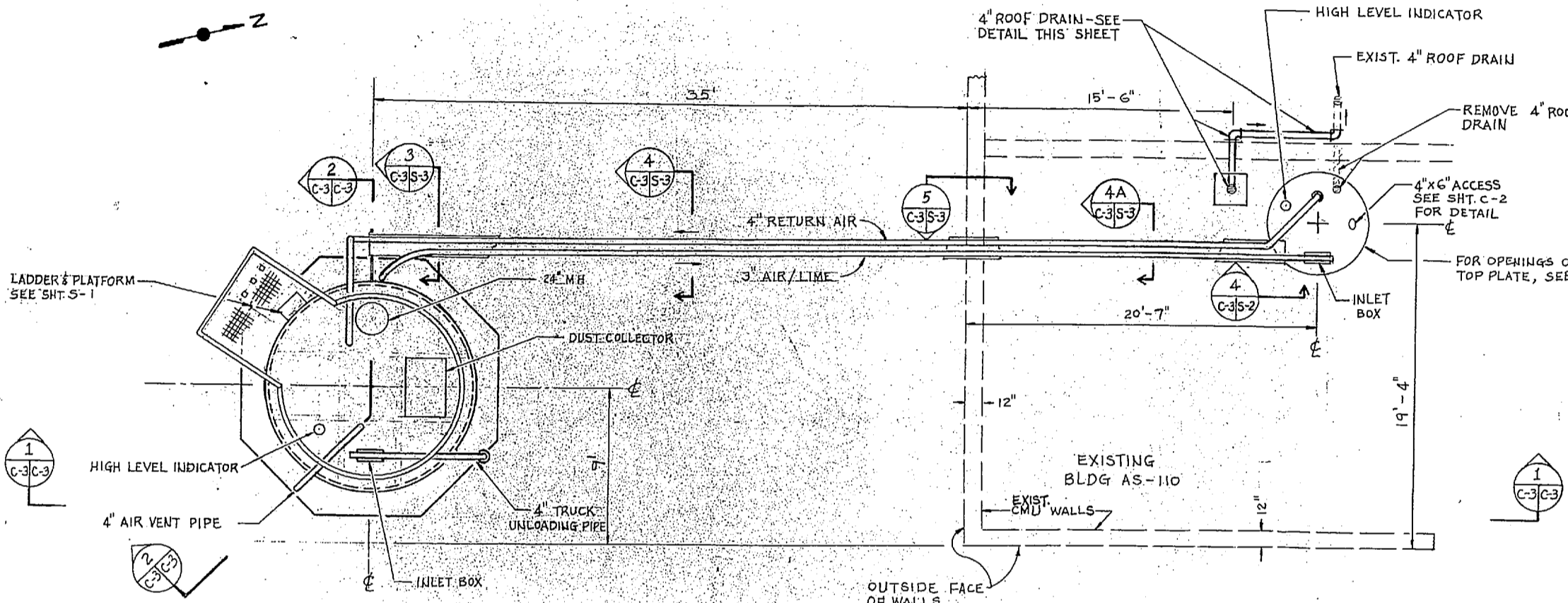
CHK. [Signature] V.P. [Signature]  
DR. MGR. [Signature]  
DES. DIR. [Signature]  
SATISFACTORY TO [Signature] / DATE [Signature]

APPROVED [Signature] DATE [Signature]

80091  
4079797  
NORFOLK, VA.  
CONTR. CTRL. NO. N62470-82-B-2161  
SCALE AS NOTED EPL05-82-2161 SHEET 2 OF 9



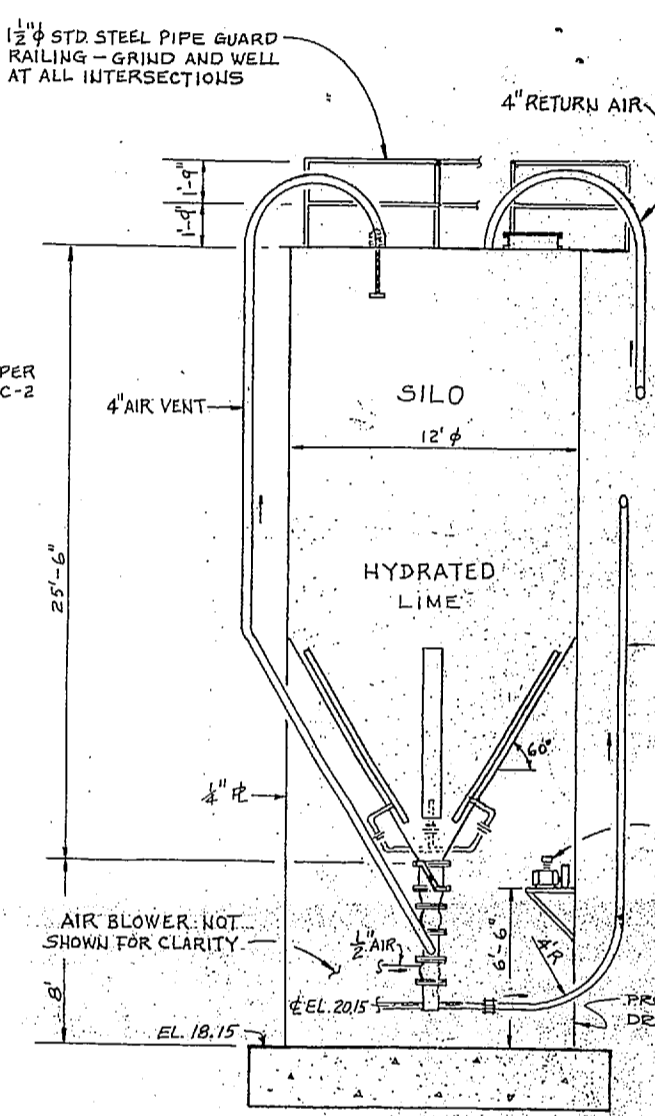
| REVISIONS |             |      |
|-----------|-------------|------|
| NO.       | DESCRIPTION | DATE |
|           |             |      |
|           |             |      |



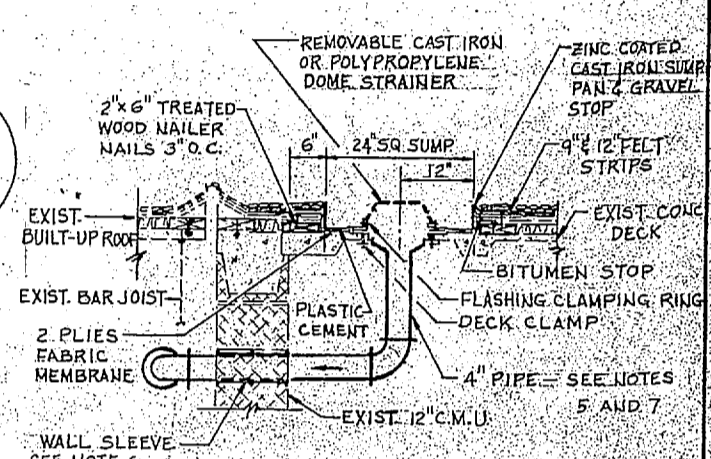
PLAN SCALE: 1/4" = 1'-0"

NOTES FOR SHT. C-3

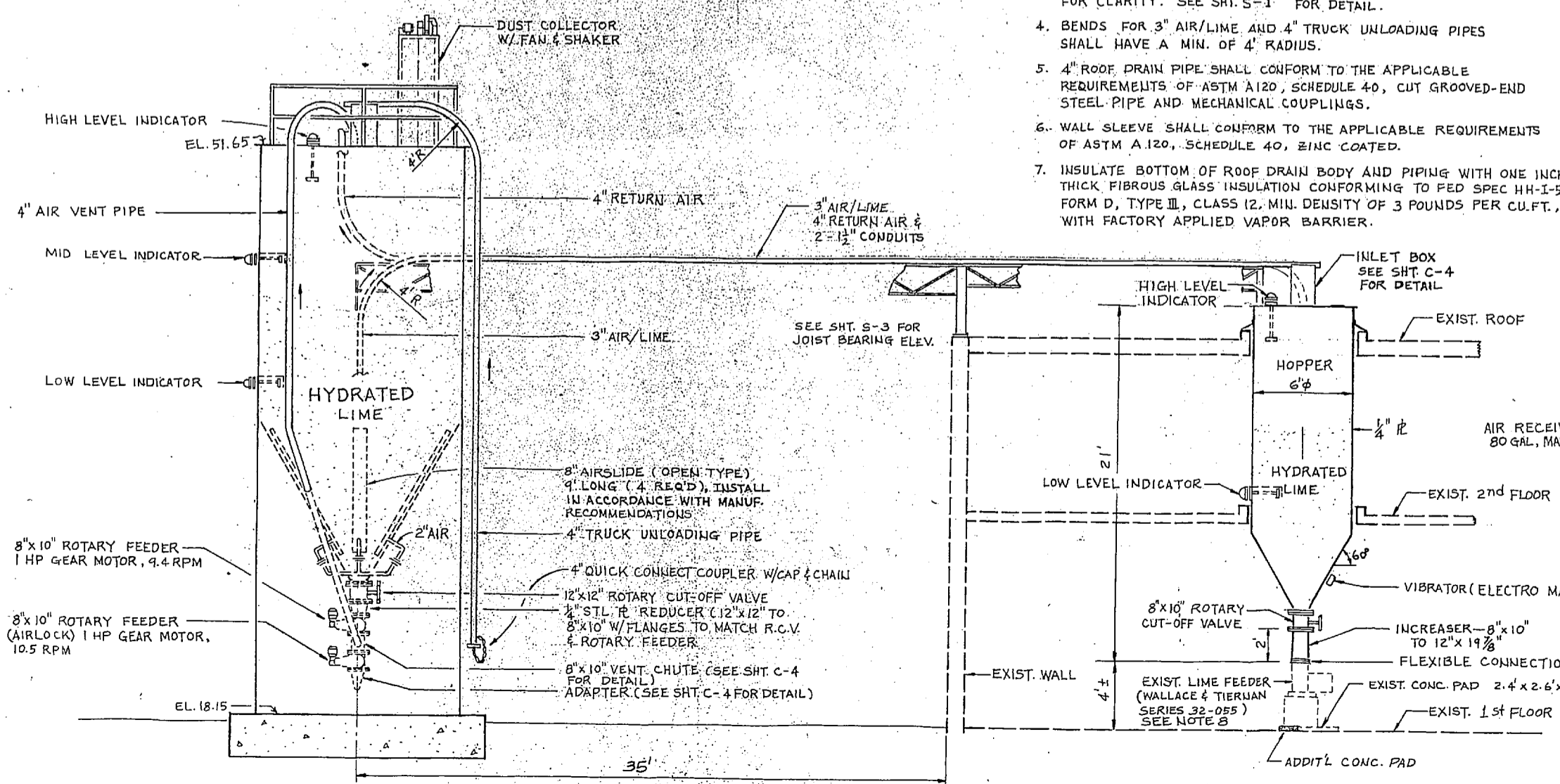
- SEE SHT. C-1 FOR GENERAL NOTES.
- ITEMS SHOWN ARE NEW UNLESS NOTED AS EXISTING.
- LADDER AND PLATFORM ARE NOT SHOWN ON SECTIONS FOR CLARITY. SEE SHT. S-1 FOR DETAIL.
- BENDS FOR 3" AIR/LIME AND 4" TRUCK UNLOADING PIPES SHALL HAVE A MIN. OF 4" RADIUS.
- 4" ROOF DRAIN PIPE SHALL CONFORM TO THE APPLICABLE REQUIREMENTS OF ASTM A120, SCHEDULE 40, ZINC COATED STEEL PIPE AND MECHANICAL COUPLINGS.
- WALL SLEEVE SHALL CONFORM TO THE APPLICABLE REQUIREMENTS OF ASTM A120, SCHEDULE 40, ZINC COATED.
- INSULATE BOTTOM OF ROOF DRAIN BODY AND PIPING WITH ONE INCH THICK FIBROUS GLASS INSULATION CONFORMING TO FED SPEC HH-1-588, FORM D, TYPE III, CLASS 12, MIN. DENSITY OF 3 POUNDS PER CU. FT., WITH FACTORY APPLIED VAPOR BARRIER.
- MOVE EXISTING LIME FEEDER APPROXIMATELY 1' SOUTH. PROVIDE ADDITIONAL 1' WIDE CONCRETE PAD TO SUPPORT THE LIME FEEDER.
- SOLENOID VALVE SHALL BE IN THE OPEN POSITION WHEN THE 10HP AIR BLOWER SYSTEM IS ENERGIZED.



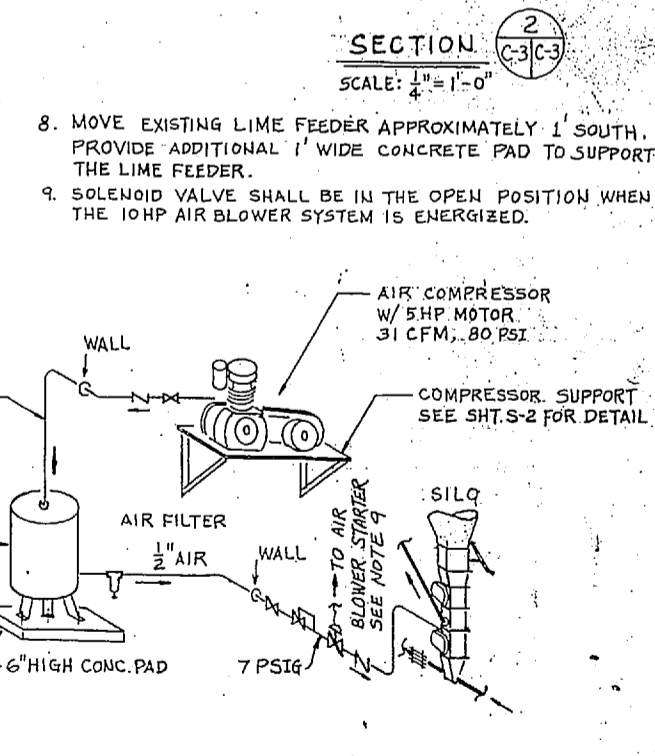
SECTION 2 SCALE: 1/4" = 1'-0"



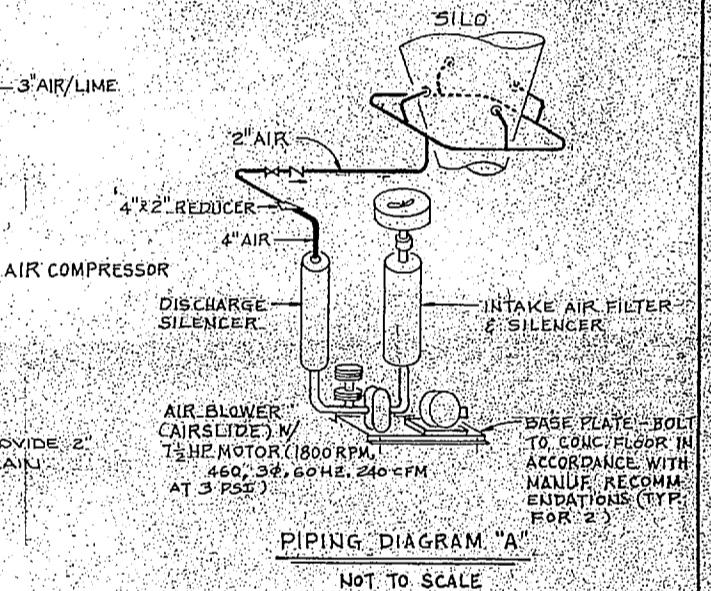
DETAIL - NEW ROOF DRAIN SCALE: 3/4" = 1'-0"



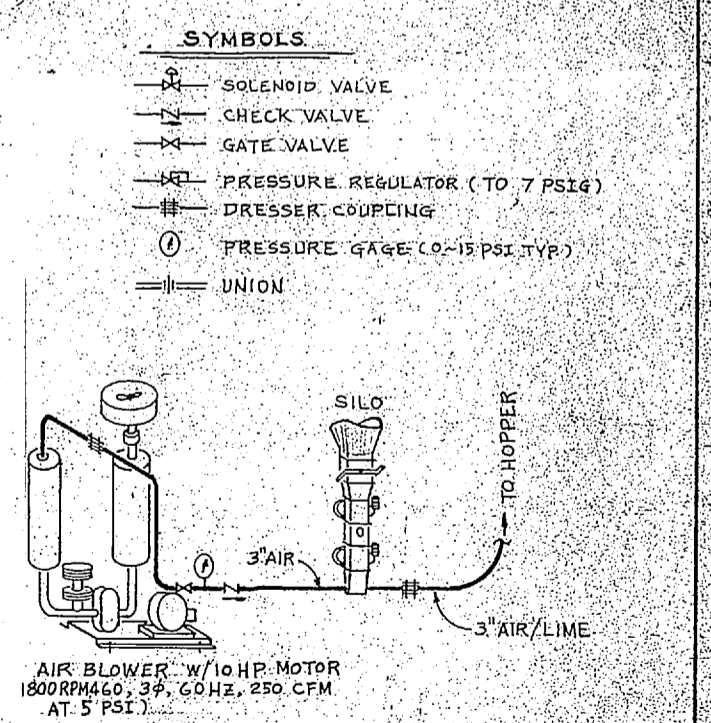
SECTION 1 SCALE: 1/4" = 1'-0"



PIPING DIAGRAM "C" NOT TO SCALE



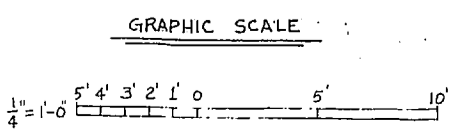
PIPING DIAGRAM "A" NOT TO SCALE



PIPING DIAGRAM "B" NOT TO SCALE

SYMBOLS

|  |                                |
|--|--------------------------------|
|  | SOLENOID VALVE                 |
|  | CHECK VALVE                    |
|  | GATE VALVE                     |
|  | PRESSURE REGULATOR (TO 7 PSIG) |
|  | DRESSER COUPLING               |
|  | PRESSURE GAGE (0-15 PSI TYP.)  |
|  | UNION                          |

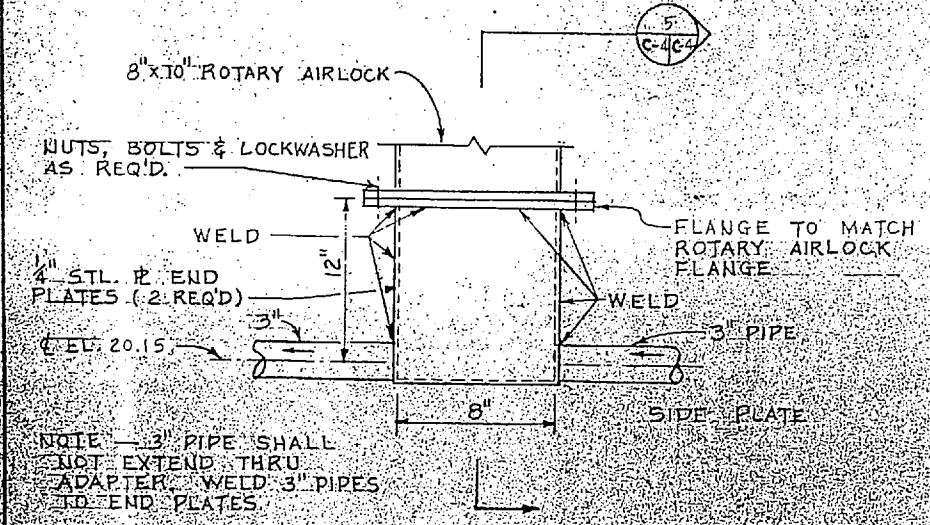


|   |  |
|---|--|
| <b>C-3</b>  |  |
| DWG. NO. 17979B<br>WORK. NO. 94 TF2161<br>DES. C. C. SHU<br>DRWN. C. C. S.<br>CHK. J. J. H.<br>BR. NGR. 11A<br>SATISFACTORY TO DATE | DEPARTMENT OF THE NAVY<br>NAVAL FACILITIES ENGINEERING COMMAND<br>ATLANTIC DIVISION<br>NAVAL STATION NORFOLK, VA.<br>MARINE CORPS BASE CAMP LEJEUNE, N. C.<br>LIME STORAGE/HANDLING EQUIPMENT<br>AT NEW RIVER<br>WATER TREATMENT PLANT AS-110<br>PLAN, SECTIONS & PIPING DIAGRAM |
| DES. DIR. J. M. D.<br>APPROVED DATE   | CON. NO. 80091<br>DATE<br>CON. NO. N62470-82-B-2161  |

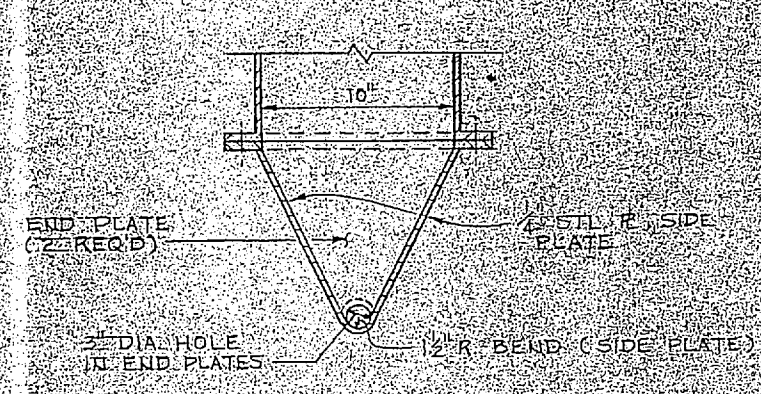




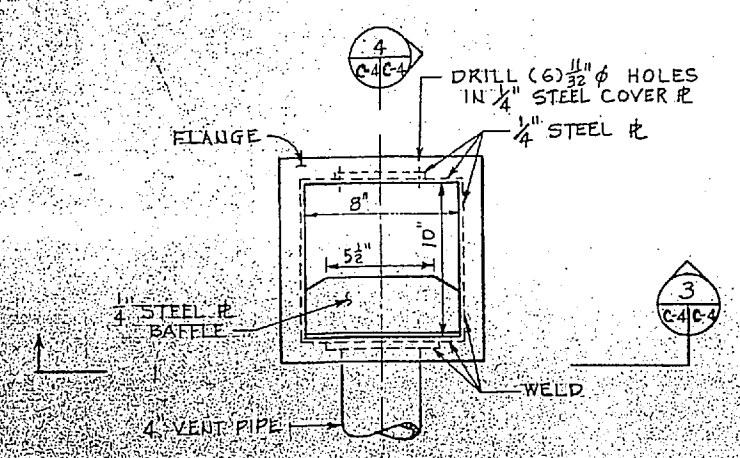
| REVISIONS |             |      |
|-----------|-------------|------|
| NO.       | DESCRIPTION | DATE |
|           |             |      |
|           |             |      |



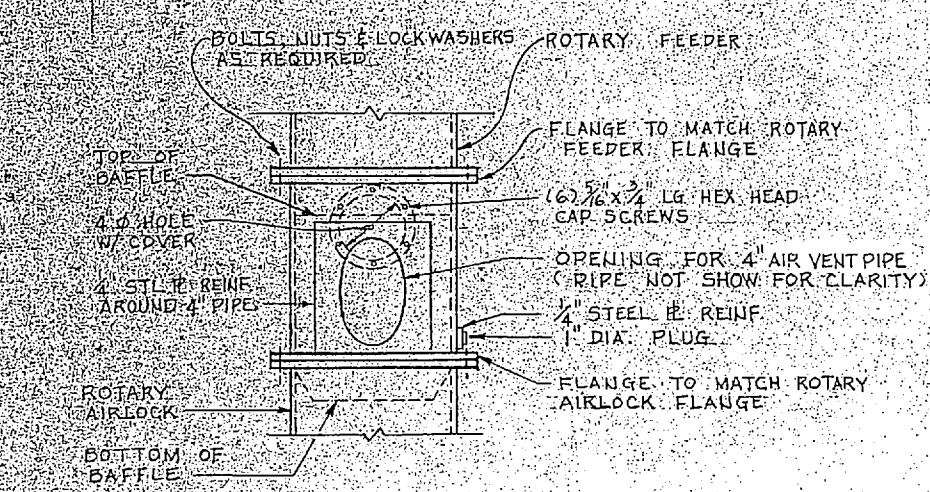
ADAPTER DETAIL  
NOT TO SCALE



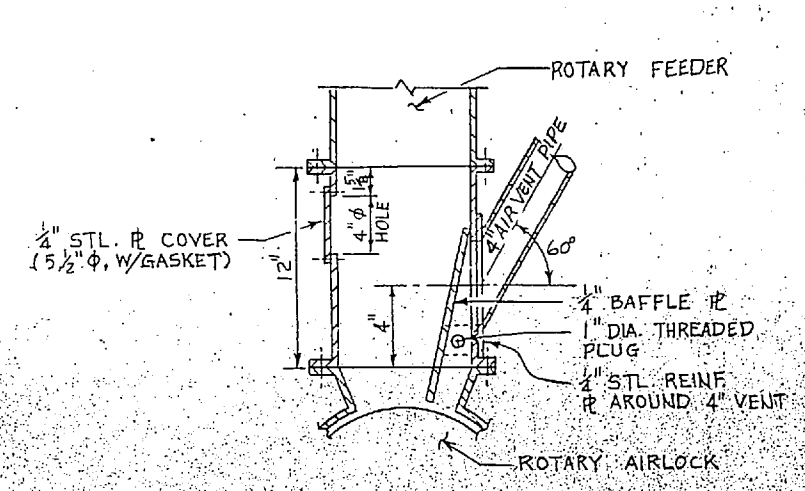
SECTION 5  
C-4C-4



PLAN

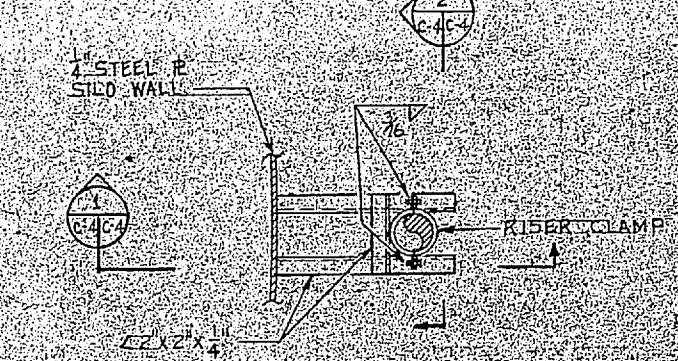


SECTION 3  
C-4C-4

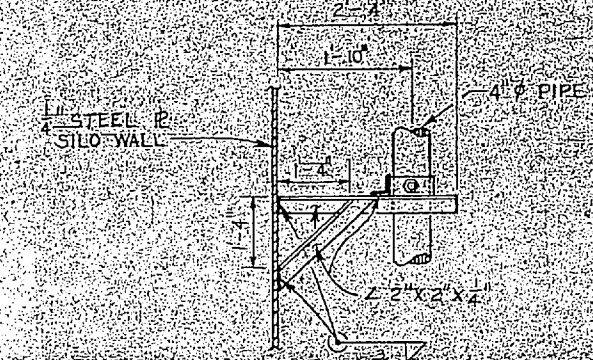


SECTION 4  
C-4C-4

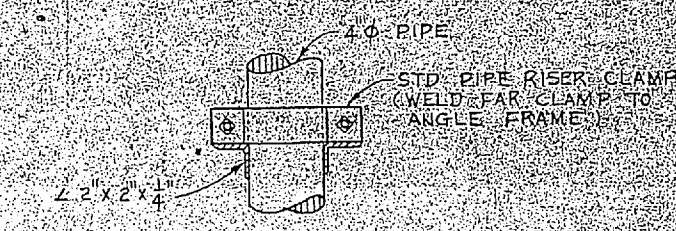
VENT CHUTE DETAIL  
NOT TO SCALE



PLAN



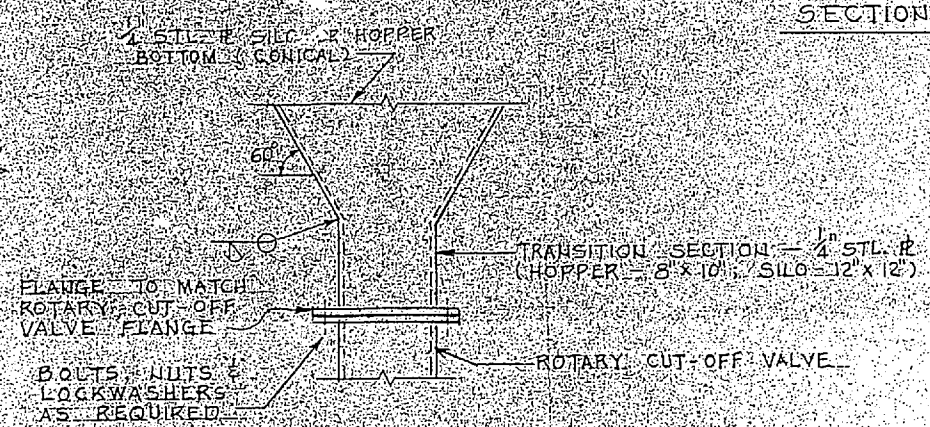
ELEVATION 2  
C-4C-4



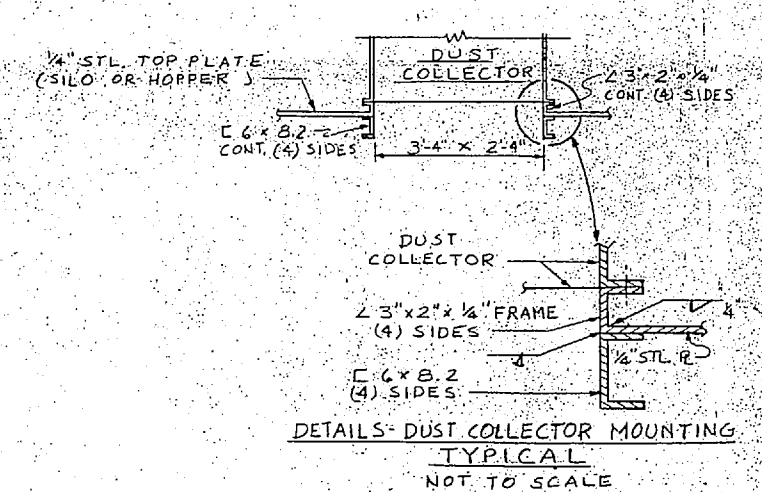
SECTION 2  
C-4C-4

DETAILS - PIPE SUPPORT BRACKETS ON SILO FOR 4" AIR VENT & TRUCK UNLOADING PIPES  
NOT TO SCALE

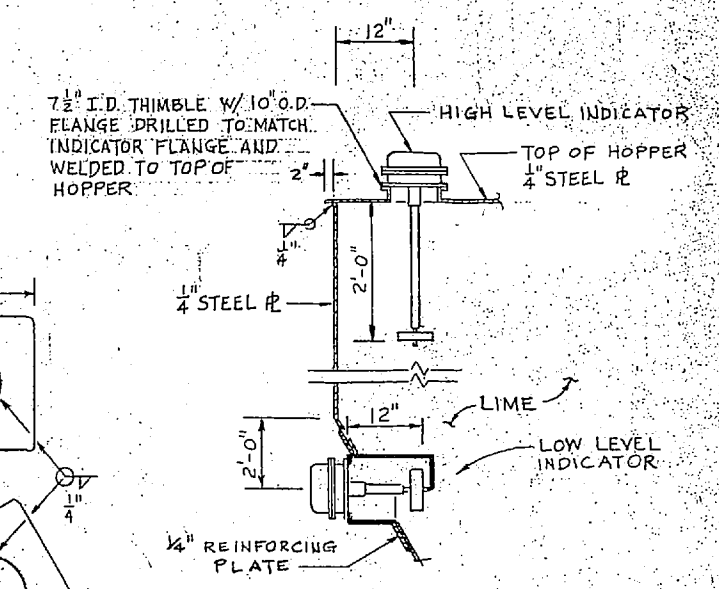
NOTES FOR SHT. C-4  
1. SEE SHT. C-1 FOR GENERAL NOTES.



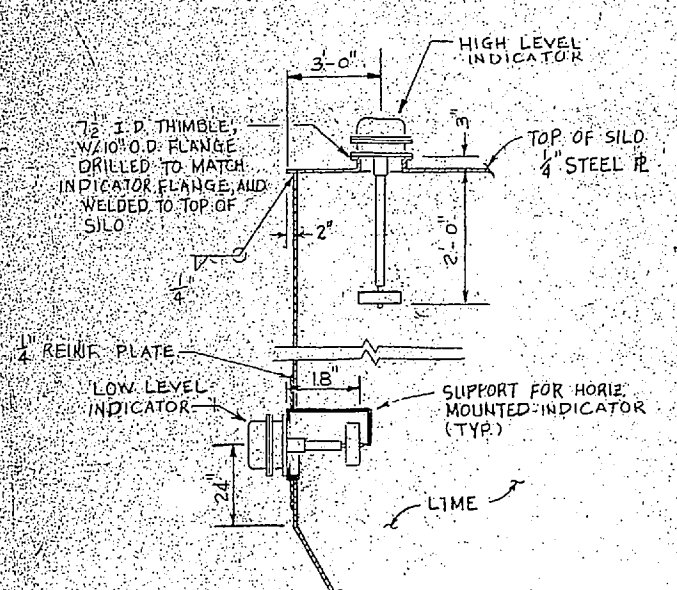
DETAIL A



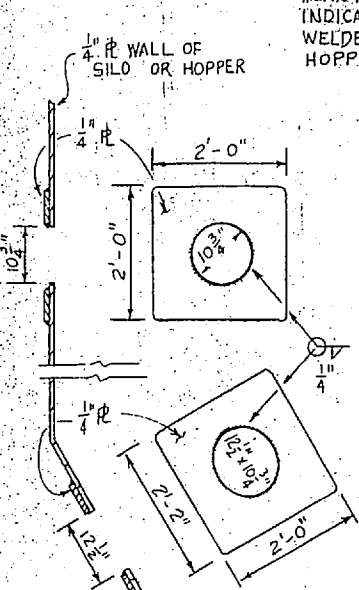
DETAILS - DUST COLLECTOR MOUNTING TYPICAL  
NOT TO SCALE



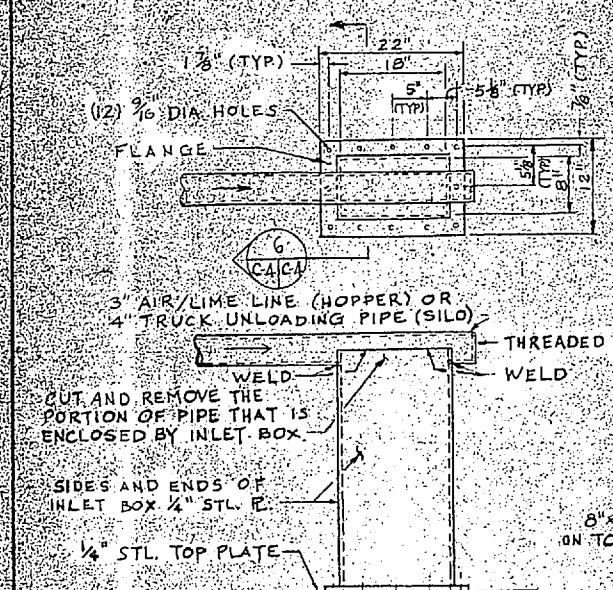
DETAIL - LEVEL INDICATORS @ HOPPER  
NOT TO SCALE



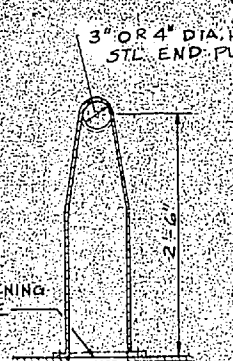
DETAIL - LEVEL INDICATORS @ SILO  
NOT TO SCALE



TYP. LEVEL INDICATOR OPENING REINFORCING  
NOT TO SCALE



INLET BOX DETAIL  
NOT TO SCALE



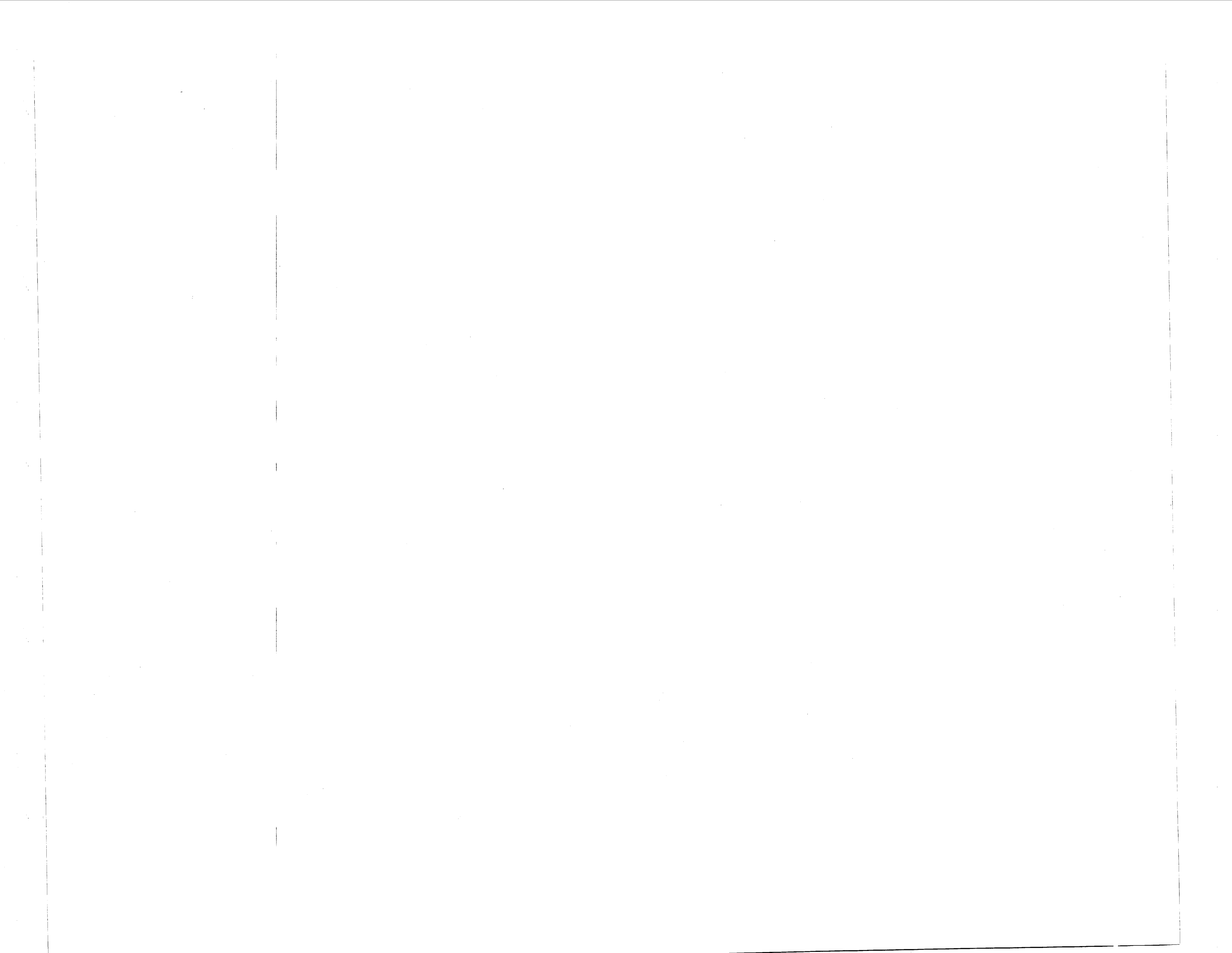
SECTION 6  
C-4C-4  
NOT TO SCALE

|  |  |
|--|--|
| <b>C-4</b>   |  |
| WORKING NO. 179799<br>DRAWING NO. 94TF2161<br>DES. C. C. SHU<br>DRWN. C. C. S.<br>CHK. D. S. H.<br>APPR. D. S. H.<br>DATE 10/20/44<br>SATISFACTORY TO: | DEPARTMENT OF THE NAVY - NAVAL FACILITIES ENGINEERING COMMAND<br>ATLANTIC DIVISION<br>NAVAL STATION - NORFOLK, VA.<br>MARINE CORPS BASE - CAMP LEJEUNE, N. C.<br>LIME STORAGE/HANDLING EQUIPMENT<br>AT NEW RIVER<br>WATER TREATMENT PLANT AS-110<br>MISCELLANEOUS DETAILS<br>SHEET NO. 4079799<br>SIZE E 80091<br>SERIAL NO. N62,470-B2-B-2161<br>DATE AS NOTED 05-82-2161<br>SMT. 4 |





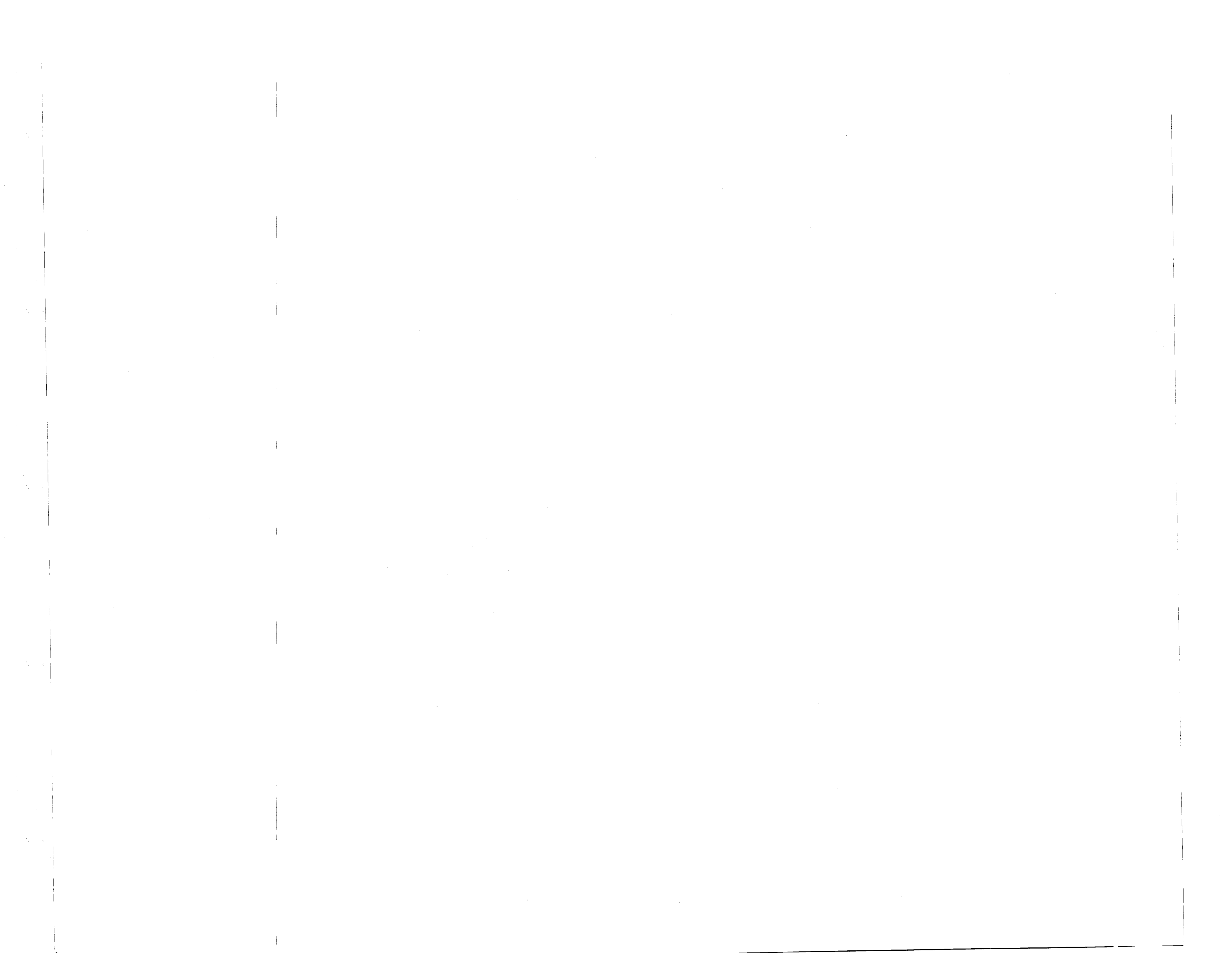


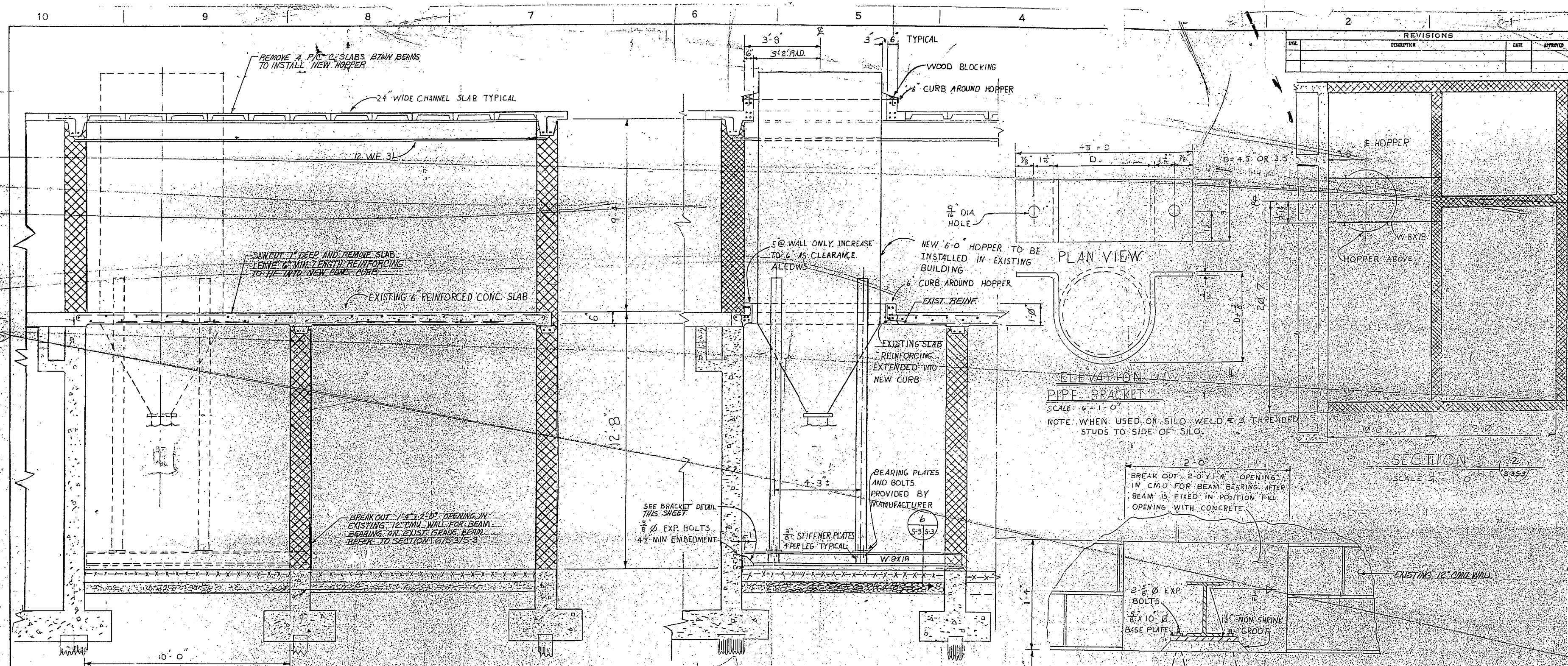












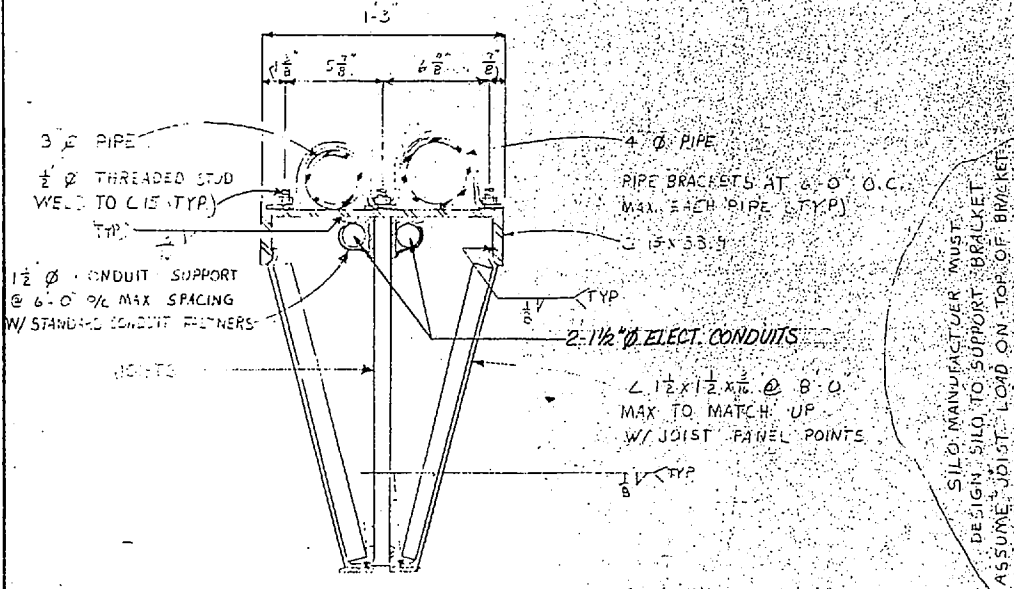
| REVISIONS |             |      |          |
|-----------|-------------|------|----------|
| NO.       | DESCRIPTION | DATE | APPROVED |
|           |             |      |          |

SECTION 5-2 (S-3)  
SCALE: 1/2" = 1'-0"

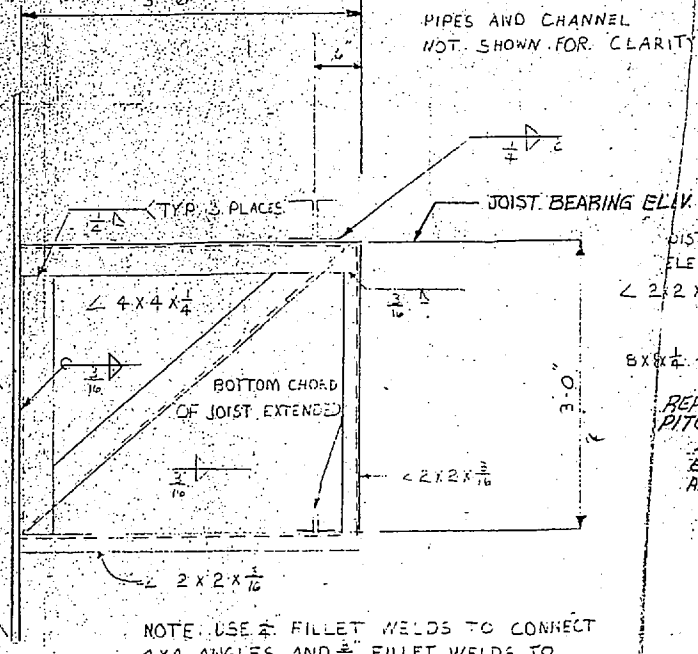
ELEVATION-NEW HOPPER  
SCALE: 1/2" = 1'-0"

SECTION 6  
SCALE: 2" = 1'-0"

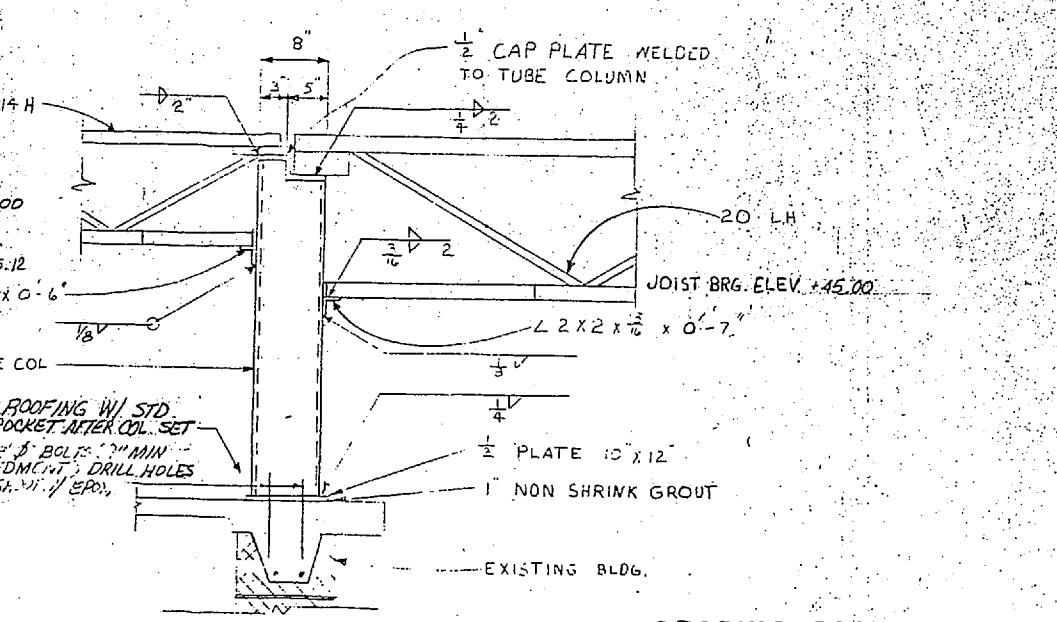
SECTION 2  
SCALE: 1/2" = 1'-0"



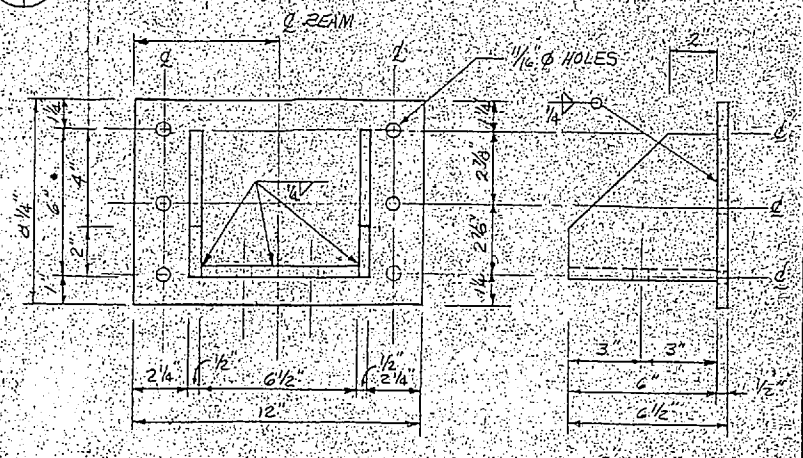
SECTION 4  
SCALE: 1/2" = 1'-0"  
JOIST: 20 LH05



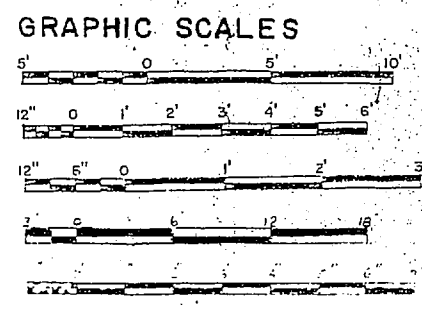
SECTION 3  
SCALE: 1" = 1'-0"



SECTION 5  
SCALE: 1" = 1'-0"



FRONT ELEVATION  
SIDE ELEVATION  
BRACKET DETAIL  
SCALE: 1" = 1'-0"



|   |  |
|---|--|
| S-3   |  |
| DTD BRG. NO. 179802<br>JOB ORDER NO. 94TF2161<br>DES. C.W. WEBSTER<br>DRAWN R.M.R.V.<br>CHK. V.R.T.<br>DES. DIV. <i>Naval Facilities</i><br>SATISFACTORY TO: _____ DATE: _____<br>APPROVED: _____ DATE: _____ | DEPARTMENT OF THE NAVY<br>NAVAL FACILITIES ENGINEERING COMMAND<br>ATLANTIC DIVISION<br>NAVAL STATION NORFOLK, VA.<br>MARINE CORPS BASE CAMP LEJEUNE, N.C.<br><b>LIME STORAGE/HANDLING EQUIPMENT</b><br><b>AT NEW RIVER</b><br><b>WATER TREATMENT PLANT AS-110</b><br>BUILDING SECTIONS & DETAILS-NEW HOPPER<br>SHEET NO. 80091<br>DATE: 4079 802<br>CONTR. CTRL. NO. N62470-B2-B-2161<br>SMALL NOTED   SPEC. 05-82-2161   SHEET 7 OF 9 |

