

CONTRACTOR'S SUBMITTAL TRANSMITTAL
END LANTDIV 4-4355/3 (Rev. 6/76)

402
82
File

CONTRACT NO. 81-C-1766	TRANSMITTAL NO. 82	DATE May 2, 1984
FROM CONTRACTOR Trader Construction Company		
PROJECT TITLE AND LOCATION Public Works MCB Camp Lejeune, N. C.		
TO Lockwood Greene/Six Associates		

CONTRACTOR USE ONLY				REVIEWER USE ONLY	
*List only one specification division per form. List only one of the following categories on each transmittal form, and indicate which is being submitted.				**ACTION CODES: A-Approved D-Disapproved AN-Approved as noted RA-Receipt acknowledged C-Comments R-Resubmit	
<input checked="" type="checkbox"/> Contractor Approved	<input type="checkbox"/> OICC Approval	<input type="checkbox"/> Deviation/Substitution For OICC Approval			
ITEM NO.	PROJ. SPEC. SECT. & PARA. and/or PROJ. DWG. NO.	ITEM IDENTIFICATION (Type, size, model no., Mfg. name, dwg. or brochure number)	NO. OF COPIES	ACTION CODES	REVIEWER'S INITIALS CODE AND DATE
151	10601	Wire Mesh Partition			
	1.2.1	Catalog data	7	A/C	A.B. 10 May 84
	1.2.2	Shop Drawings	7		1

CONTRACTOR'S COMMENTS

COPY OF TRANSMITTAL AND SUBMITTALS TO ROICC ROICC, Camp Lejeune, N.C.	CONTRACTOR REPRESENTATIVE (Signature) Dale Stallings
DATE RECEIVED BY REVIEWER 5/7/84	FROM (Reviewer) Six Associates, Inc.
	TO Trader Construction Co.

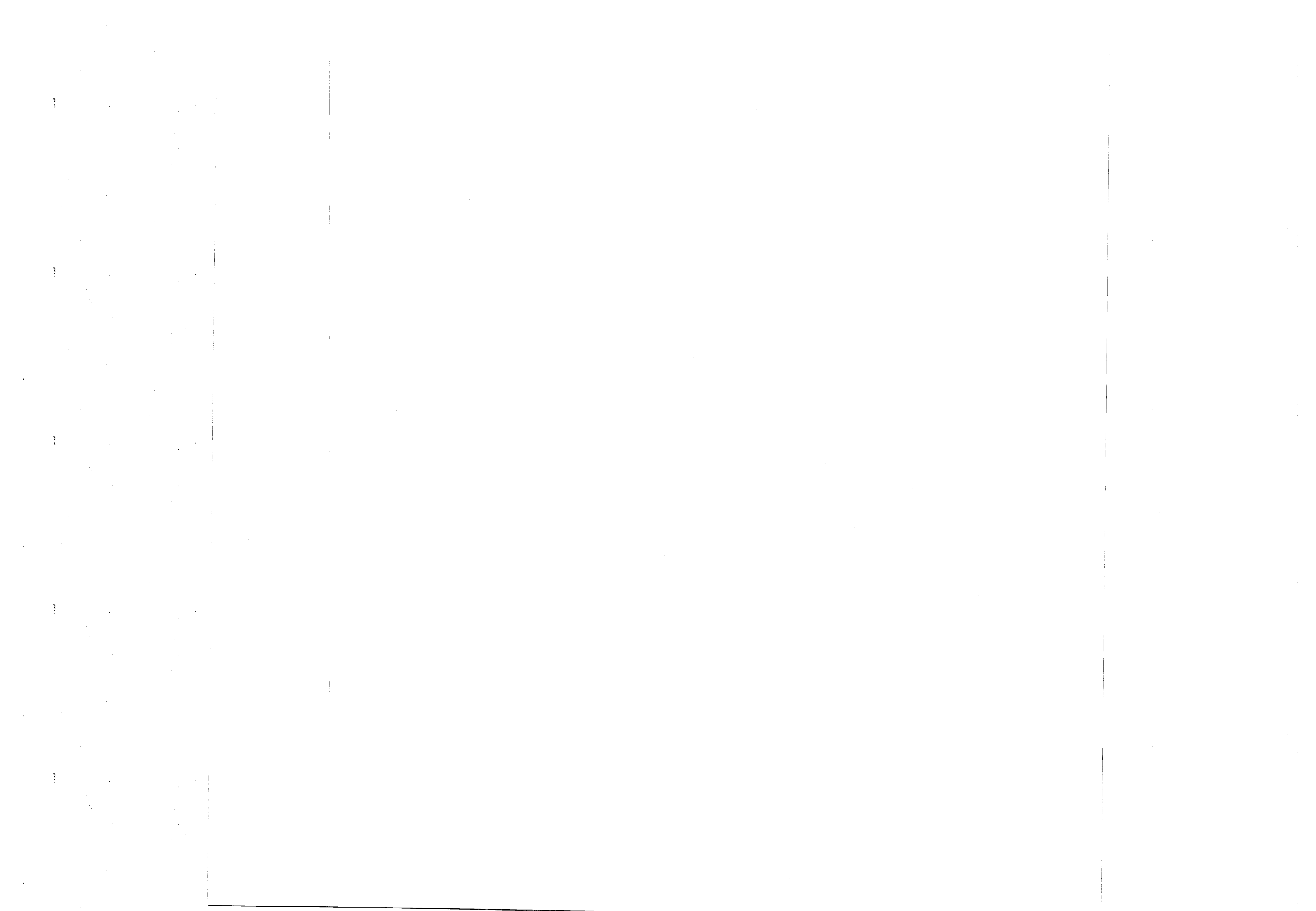
Submittals are returned with action indicated. Approval of an item does not include approval of any deviation from the contract requirements unless the contractor calls attention to and supports the deviation.
 Submittals are forwarded to LANTDIV with A-E recommendations indicated in REVIEWER USE ONLY Section and in comments below on ONE COPY of the transmittal form.

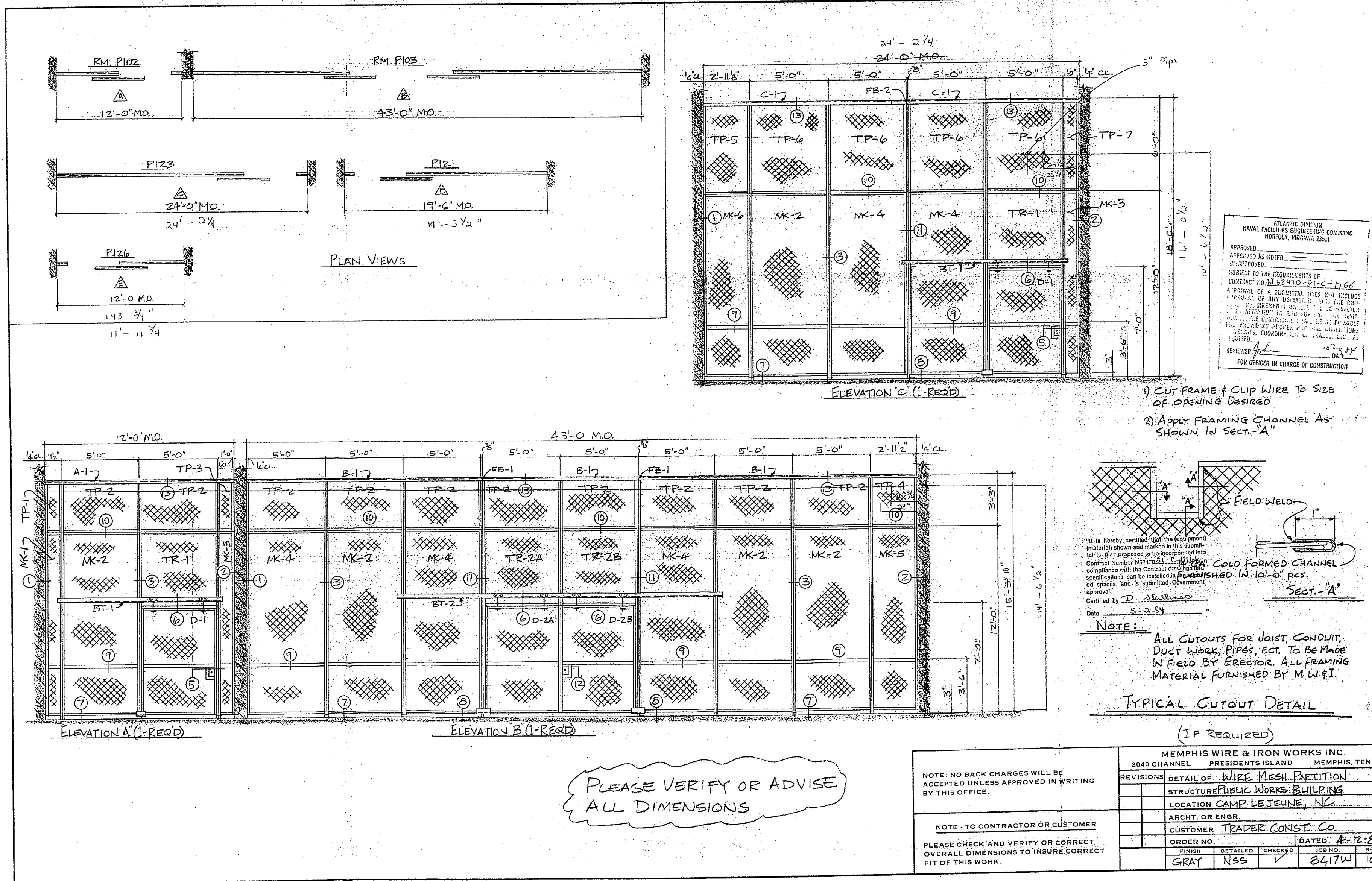
REVIEWER'S COMMENTS

Manufacturers data shall be marked to indicate specific items submitted for approval.

COPY TO: FIELD
 DATE: 23 May 84

COPIES TO: ROICC (2) LANTDIV (1) A-E (1)	DATE 5/11/84	SIGNATURE A.B. Joh
---	-----------------	-----------------------





PLAN VIEWS

ELEVATION C (1-REQD)

ELEVATION A (1-REQD)

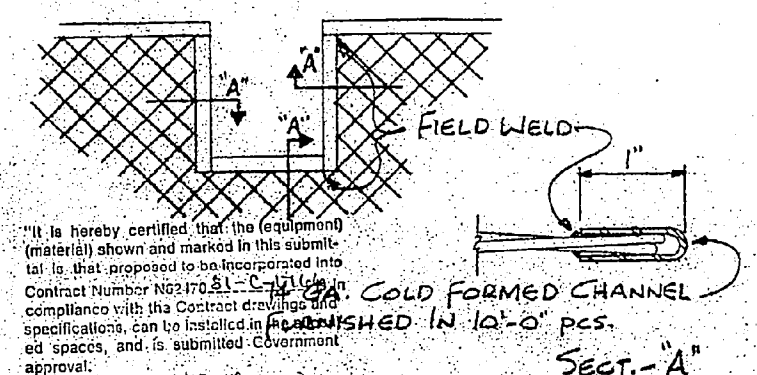
ELEVATION B (1-REQD)

ATLANTIC DIVISION
NAVAL FACILITIES ENGINEERING COMMAND
NORFOLK, VIRGINIA 23511

APPROVED _____
APPROVED AS NOTED _____
SUBJECT TO THE REQUIREMENTS OF
CONTRACT NO. 132470-84-2-1766

APPROVAL OF A ENGINEER DOES NOT INCLUDE
ASSUMPTION OF ANY DESIGNER'S LIABILITY FOR
CONSTRUCTION OF THIS PROJECT. THE DESIGNER
TAKES NO RESPONSIBILITY FOR THE CONSTRUCTION
OF THIS PROJECT OR FOR THE QUALITY OF THE
MATERIALS, CONSTRUCTION OR THE RESULTS THEREOF,
WHICH ARE THE RESPONSIBILITY OF THE CONTRACTOR.
DATE: 10-23-84
FOR OFFICER IN CHARGE OF CONSTRUCTION

- 1) CUT FRAME & CLIP WIRE TO SIZE OF OPENING DESIRED
- 2) APPLY FRAMING CHANNEL AS SHOWN IN SECT.-A"



"It is hereby certified that the equipment (material) shown and marked in this submittal is that specified to be incorporated into Contract Number 132470-84-2-1766 and that it complies with the Contract drawings and specifications, can be installed in accordance with the contract, and is submitted for Government approval."
approved by D. Stalump
Date: 5-23-84

NOTE:
ALL CUTOUTS FOR JOIST CONDUIT, DUCT WORK, PIPES, ECT. TO BE MADE IN FIELD BY ERECTOR. ALL FRAMING MATERIAL FURNISHED BY M.W.I.

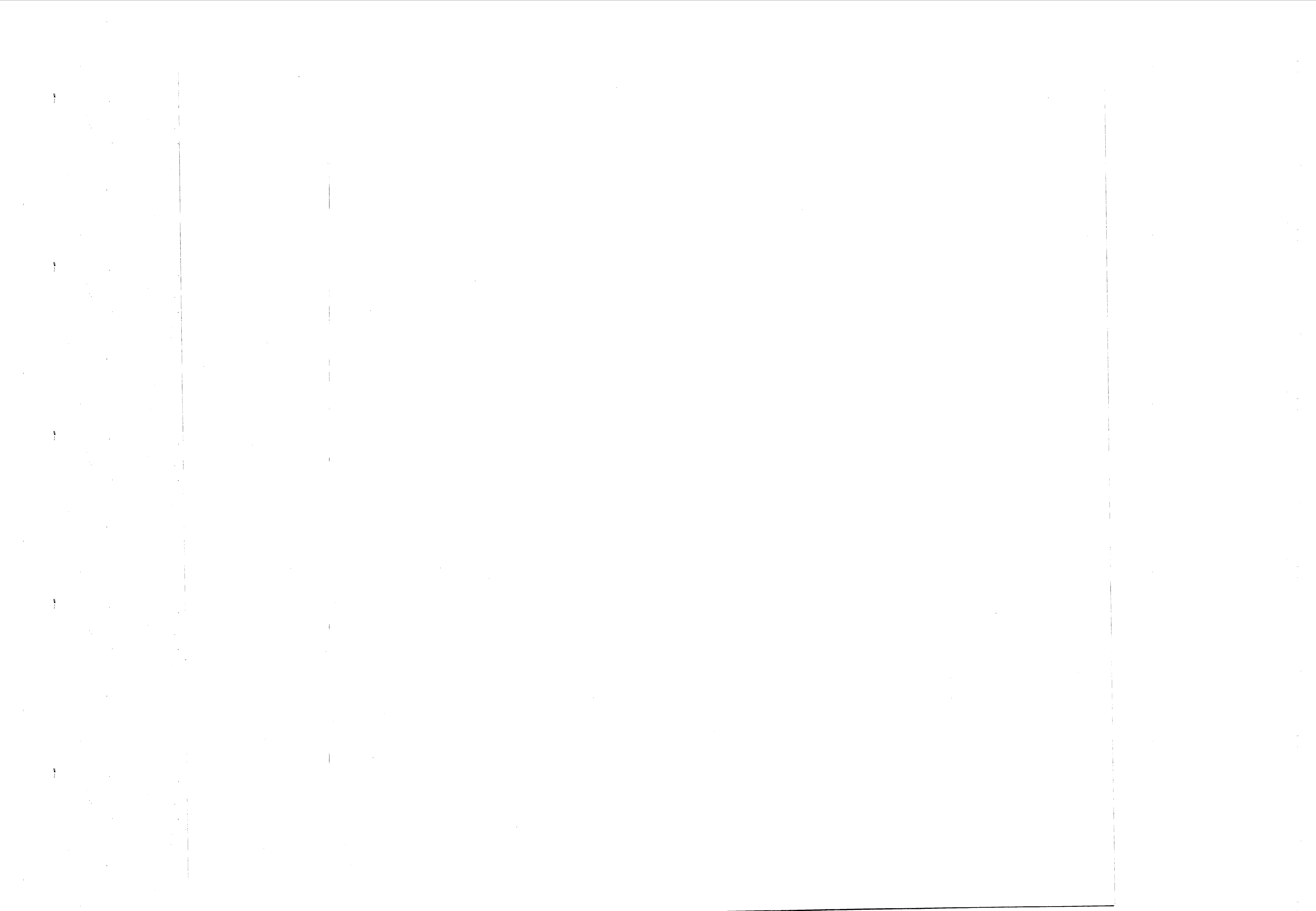
TYPICAL CUTOUT DETAIL
(IF REQUIRED)

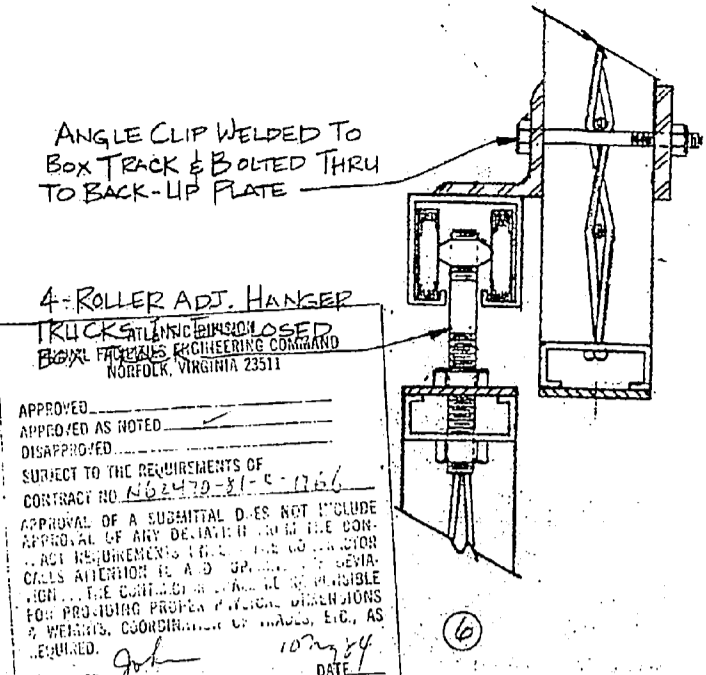
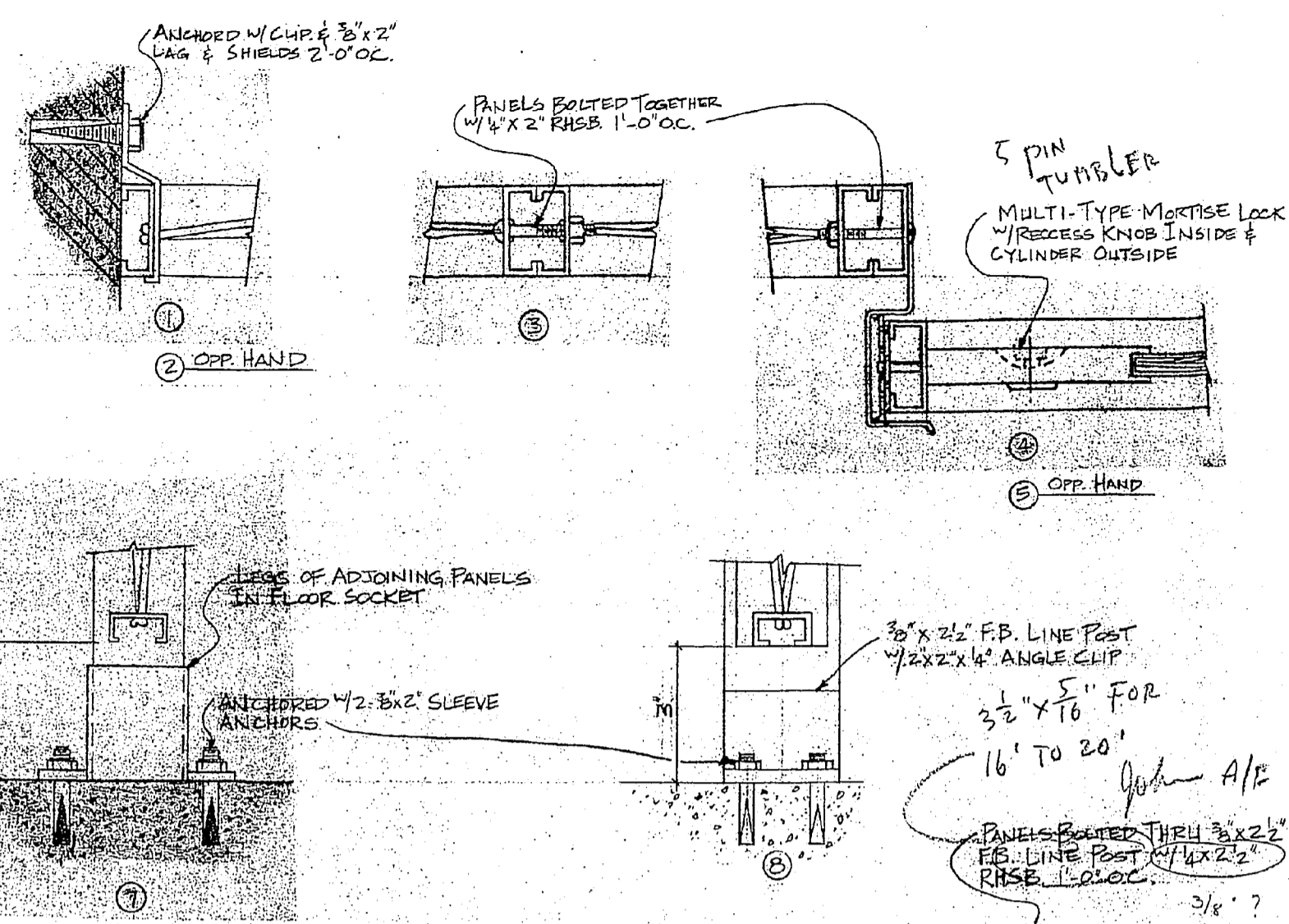
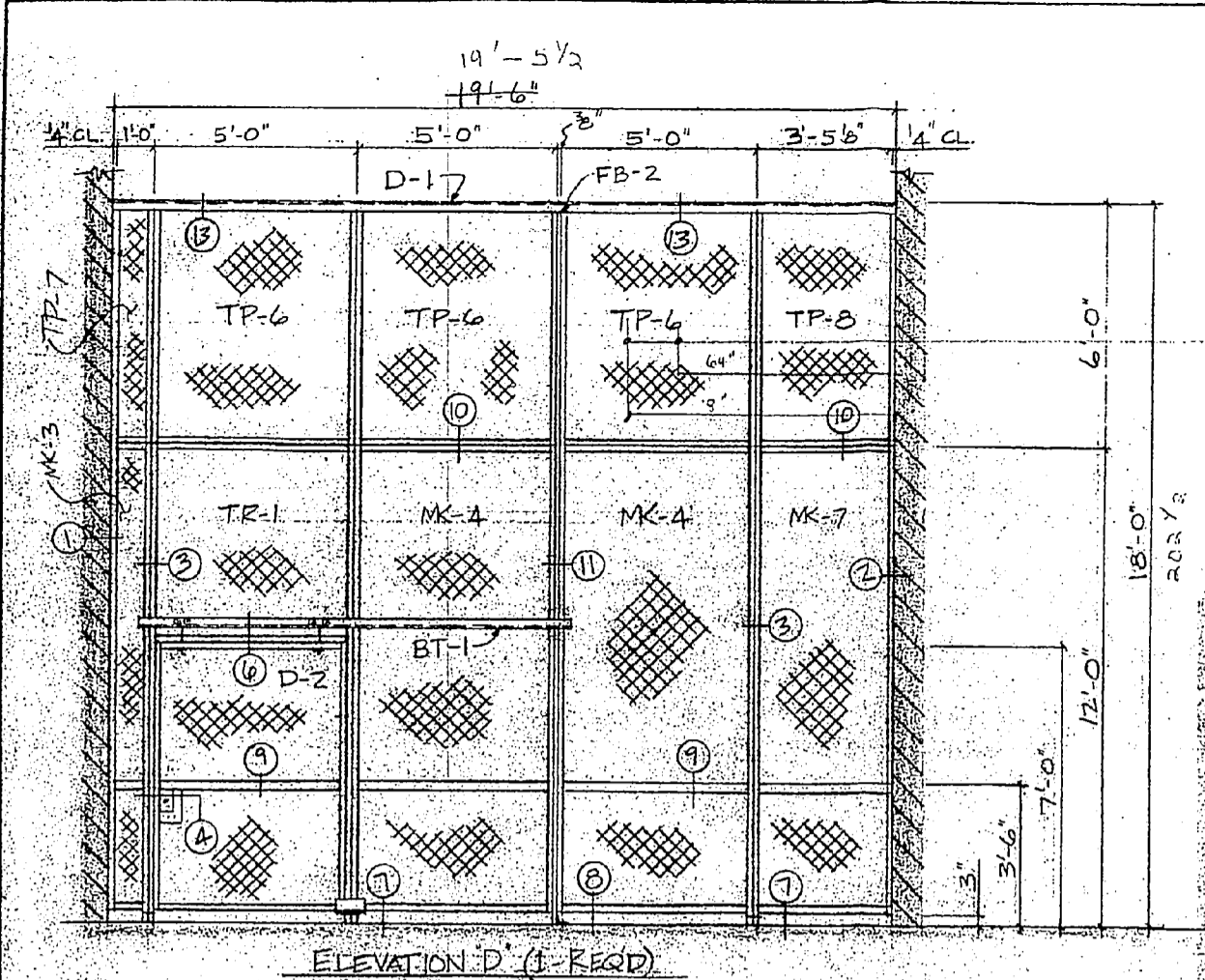
PLEASE VERIFY OR ADVISE ALL DIMENSIONS

NOTE: NO BACK CHARGES WILL BE ACCEPTED UNLESS APPROVED IN WRITING BY THIS OFFICE.

NOTE - TO CONTRACTOR OR CUSTOMER
PLEASE CHECK AND VERIFY OR CORRECT OVERALL DIMENSIONS TO INSURE CORRECT FIT OF THIS WORK.

MEMPHIS WIRE & IRON WORKS INC.			
2040 CHANNEL		PRESIDENTS ISLAND MEMPHIS, TENN.	
REVISIONS	DETAIL OF	WIPE MESH PARTITION	
	STRUCTURE	PUBLIC WORKS BUILDING	
	LOCATION	CAMP LEJEUNE, NC	
	ARCHT. OR ENGR.		
	CUSTOMER	TRADER CONST. CO.	
ORDER NO.	DATED	4-12-84	
FINISH	DETAILED	CHECKED	JOB NO.
GRAY	NSS	✓	8417W
			SHEET
			10F2





APPROVED AS NOTED

DISAPPROVED

SUBJECT TO THE REQUIREMENTS OF CONTRACT NO. 65-4-79-21-5-1266

CONTRACT OF A SUBSISTANT DOES NOT CONSTITUTE APPROVAL OF ANY DESIGN OR MATERIALS UNLESS SPECIFICALLY NOTED TO DO SO.

THIS CONTRACT IS A CONTRACT FOR THE SUPPLY OF MATERIALS AND NOT FOR THE PERFORMANCE OF WORK.

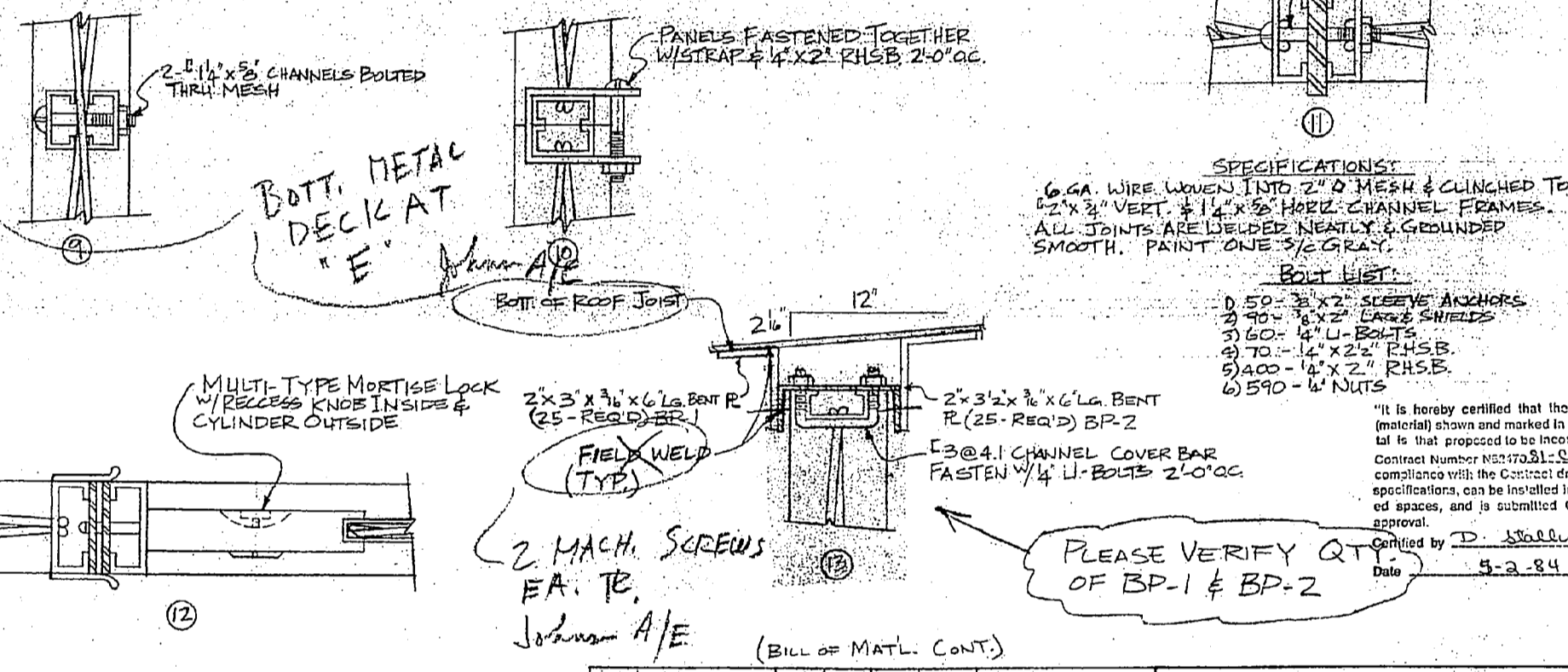
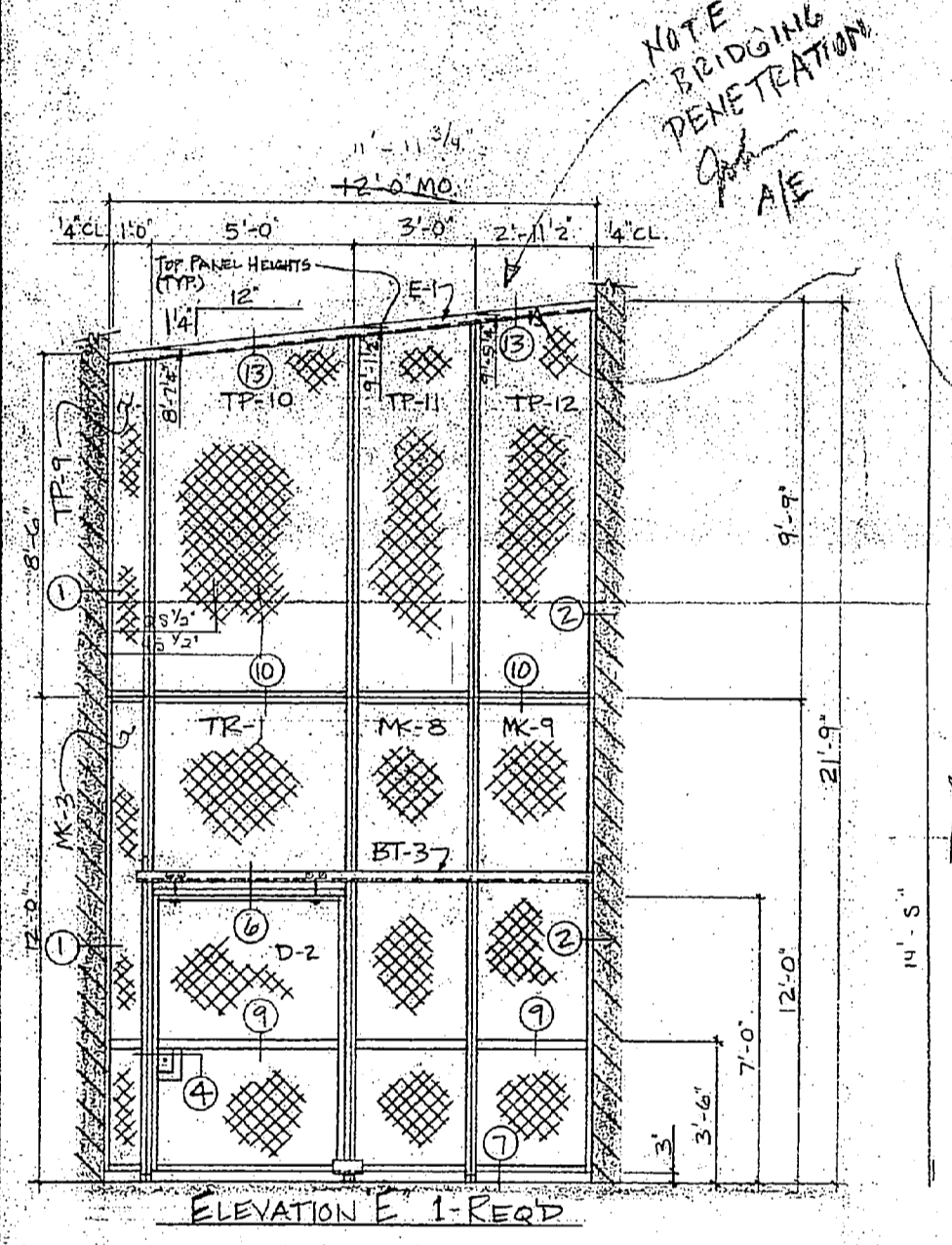
THE CONTRACTOR SHALL BE RESPONSIBLE FOR THE PROPER INSTALLATION AND MAINTENANCE OF THE MATERIALS.

REVISIONS

REV.	DESCRIPTION	DATE
1	AS NOTED	
2	AS NOTED	

REVIEWER: J. H. [Signature]

QTY	DESCRIPTION	W.	D.	H.	MKN	REMARKS
1	WIRE PANEL	0'-11 1/2"	0'-2"	12'-0"	1	
5		5'-0"			2	2-LEG
4		1'-0"			3	
7		5'-0"			4	1-LEG
7		2'-11 1/2"			5	
1		2'-11 1/2"			6	
1		3'-5 1/2"			7	
1		3'-0"			8	
1		2'-11 1/2"	0'-0"		9	
1		2'-11 1/2"	3'-3"		TP-1	
10		5'-0"			TP-2	
1		1'-0"			TP-3	
1		2'-11 1/2"	0'-0"		TP-4	
1		2'-11 1/2"	6'-0"		TP-5	
7		5'-0"			TP-6	
7		1'-0"			TP-7	
1		3'-5 1/2"	0'-0"		TP-8	
1		1'-0"			TP-9	SLOPED
1		5'-0"			TP-10	SLOPED
1		3'-0"			TP-11	SLOPED
1		2'-11 1/2"			TP-12	SLOPED
4		5'-0"	12'-0"		TR-1	
1		5'-0"	12'-0"		TR-2A	1-LEG
1		0'-0"	5'-0"	12'-0"	TR-2B	1-LEG
2	WIRE DOOR PANEL	5'-0"	7'-0"		D-1	
2		5'-0"	7'-0"		D-2	
1		5'-0"	7'-0"		D-2A	
1		5'-0"	7'-0"		D-2B	
1	COVER BAR				A-1	3 @ 4'-L x 11'-11 1/2"
1					B-1	x 14'-3 1/2"
2					C-1	x 11'-11 1/2"
1					D-1	x 19'-5 1/2"
1					E-1	0'-0" x 12'-0"
2	LINE POST				FB-1	3/4" x 2 1/2" FB.



(BILL OF MATL. CONT.)

QTY	DESCRIPTION	W.	D.	H.	MKN	REMARKS
2	LINE POST			17'-9"	FB-2	3/4" x 2 1/2" F.B.
3	Box Track				BT-1	10'-4" LG.
1					BT-2	20'-4" LG.
25	BENT P.				BP-1	11'-2" LG.
25	BENT P.				BP-2	SEE DET. 13
4	ROLLER TRUCKS					SEE DET. 13
10	WALL CLIPS					
18	FLOOR SOCKETS					
56	1" x 1" STRAPS					SEE DET. 10

NOTE: NO BACK CHARGES WILL BE ACCEPTED UNLESS APPROVED IN WRITING BY THIS OFFICE.

NOTE - TO CONTRACTOR OR CUSTOMER

PLEASE CHECK AND VERIFY OR CORRECT OVERALL DIMENSIONS TO INSURE CORRECT FIT OF THIS WORK.

MEMPHIS WIRE & IRON WORKS INC.

2040 CHANNEL PRESIDENTS ISLAND MEMPHIS, TENN.

REVISIONS

DETAIL OF WIRE MESH PARTITION

STRUCTURE PUBLIC WORK BUILDING

LOCATION CAMP LEJEUNE, NC.

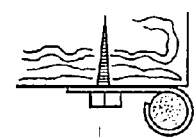
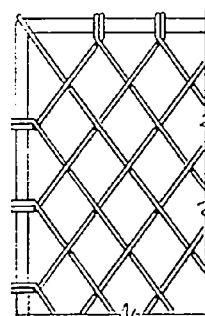
ARCHT. OR ENGR.

CUSTOMER TRADER CONST. CO

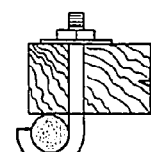
ORDER NO. DATED 4-12-84

FINISH	DETAILED	CHECKED	JOB NO.	SHEET
GRAY	NSS	✓	BATW	20F2

Woven Wire Window Guards

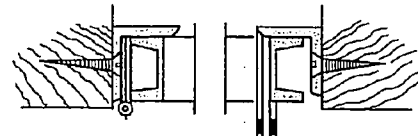
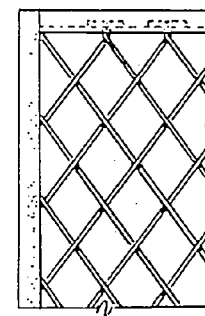


Anchored With
1/2" Clips & Screws



Anchored With
2" Bolt, Trim
Wall Or Dowel

Wire is Neatly Wrapped Around
A Round Bar Frame. This
Guard is
Installed in
Installations.
It is hereby certified that the material shown and marked in this submittal is that proposed to be incorporated in the contract number shown on this submittal in compliance with the General Conditions and specifications of the contract. It is further certified that the material shown and marked in this submittal is that proposed to be incorporated in the contract number shown on this submittal in compliance with the General Conditions and specifications of the contract.
6 Ga. Wire-2" Diamond Mesh-1/2" Round Frame
Certified by: *[Signature]*
Date: 5-2-84

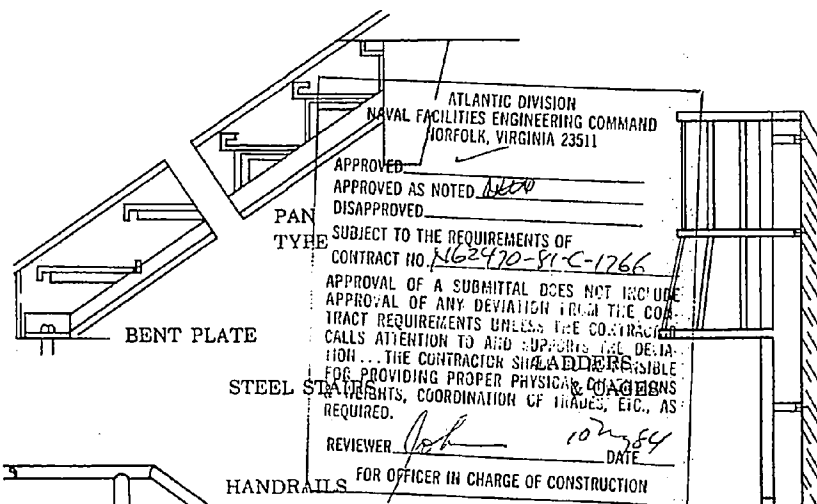


Wire is clinched through holes
in channel frame. This type guard
is best suited for hinging and
locking as well as permanent
installations

TYPE '16C10'
10 Ga. Wire-1 1/2" Diamond Mesh-1x1/2" Channel Frame
TYPE '16C60'
6 Ga. Wire-2" Diamond Mesh-1 1/2x1/2" Channel Frame

Memphis Wire and Iron Works, Inc.
901/775-0107

Miscellaneous Iron Fabricators

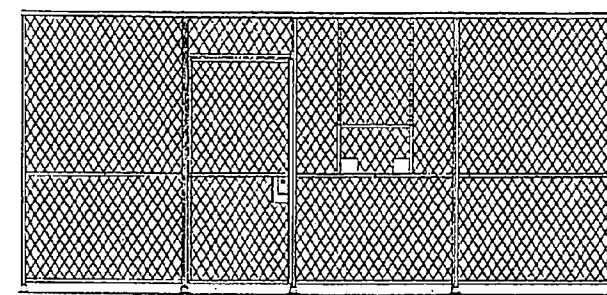


Our Iron Fabrication
Department Has Met
The Rigid Requirements For:
Nuclear Plants
Chemical Companies
Water Treatment Plants
Schools & Hospitals
Highway Departments

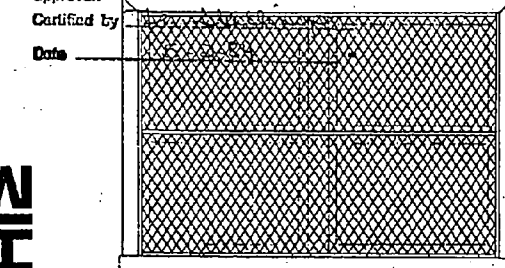
Our Engineering Department welcomes the opportunity to design or offer assistance with your requirements on wire mesh partitions and miscellaneous iron handrails, etc., and also to be sure that 'OSHA' specs are fulfilled.

Memphis Wire and Iron Works, Inc.
P. O. Box 13192 - 2040 Channel Ave. - 901/775-0107 Memphis, Tenn. 38113

WOVEN WIRE PRODUCTS



It is hereby certified that the material shown and marked in this submittal is that proposed to be incorporated in the contract number shown on this submittal in compliance with the General Conditions and specifications of the contract. It is further certified that the material shown and marked in this submittal is that proposed to be incorporated in the contract number shown on this submittal in compliance with the General Conditions and specifications of the contract.
Contract Number: *12-112-11-C-1266*
Stores - Locker Rooms



WINDOW GUARDS
Stores - Factories - Gymnasium



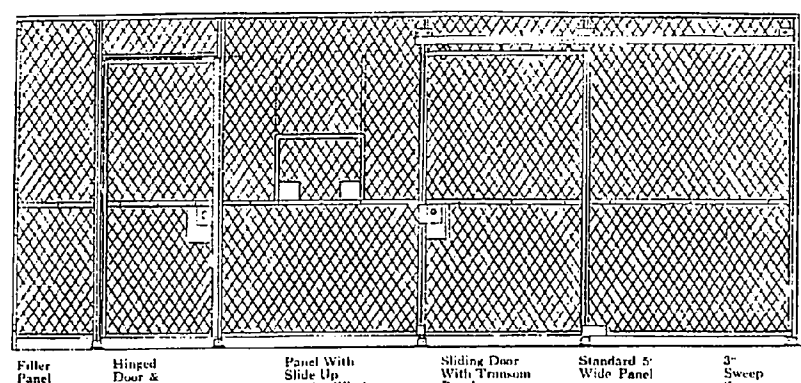
Memphis Wire and Iron Works, Inc.

Since 1906

P. O. Box 13192 - 2040 Channel Ave. - 901/775-0107 Memphis, Tenn. 38113



Woven Wire Partitions



Panel With
Hinged
Door &
Frame
Panel
Panel With
Slide Up
Sweep Window
With Metal
Sheet
Sliding Door
With Trimmed
Panel
Standard 2
Wide Panel
2 Sweep
Sweep

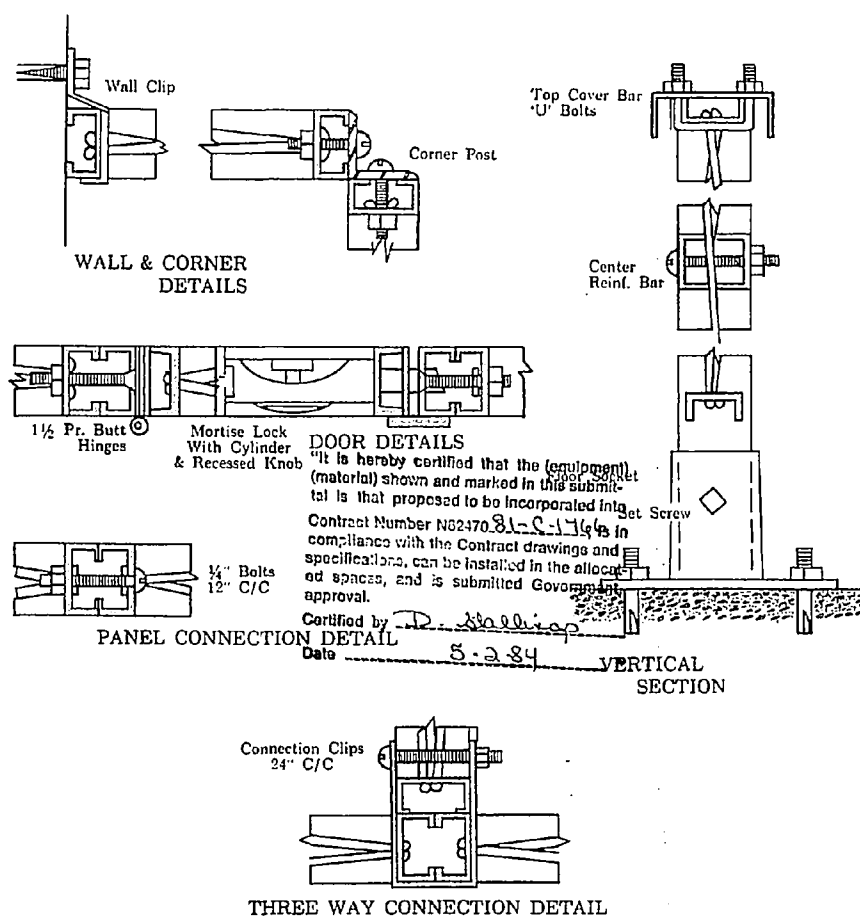
TYPICAL ELEVATION WITH STANDARD COMPONENTS
Stock 7' - 8' - 9' - 10' & 12' Tall Partitions
Or
Any Height Made To Order

SPECIFICATIONS	STANDARD #M10	HEAVY DUTY #M60
Wire	#10 W & M Gauge	#6 W & M Gauge
Mesh	1 1/2" Diamond	2" Diamond
Vert. Frame	1 1/2 x 5/8" C Type Channel	2 x 3/4 Channel
Horiz. Frame	1 x 1/2 Channel	1 1/2 x 5/8 "C" Type
Top Cover Bar	2 1/2 x 1 Cont. Channel	C2 @ 4.18 Cont. Channel
Corner Posts	1 1/2 x 1/4 Angle	2 x 2 Angle
Door Frames	1 1/2 x 1/4 H R Channel	2 x 3/4 Channel
Center Reinf. Bar	2 Channels - 1 x 1/2 Bolted Top Thru Mesh	
Floor Sockets	2 1/4" High Steel	
Finish	Spray Coat Machine Gray Enamel	

Our Partitions Are Priced & Shipped Complete
With All Bolts & Fittings—Ready For Installation

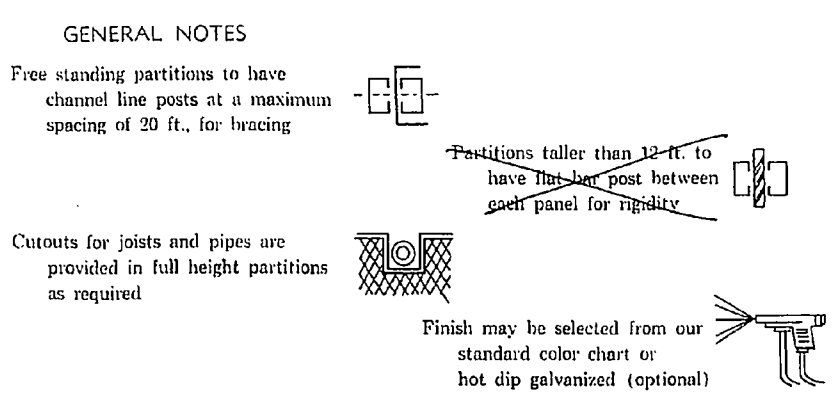
Memphis Wire and Iron Works, Inc.
901/775-0107

Typical Details for Standard M10 Partitions



THREE WAY CONNECTION DETAIL

Woven Wire Partitions



GENERAL NOTES
Free standing partitions to have channel line posts at a maximum spacing of 20 ft., for bracing
Partitions taller than 12 ft. to have the line post between each panel for rigidity
Cutouts for joists and pipes are provided in full height partitions as required
Finish may be selected from our standard color chart or hot dip galvanized (optional)

OPTIONAL SPECIFICATIONS
MT10
Same as "M10" except partitions are taller than 12 ft. with flat bar posts between panels.
MT60
Same as "MT10" except that partitions are heavy duty type ("M60").
M10S & M60S
Same as "M10" & "M60" except that partitions have a solid 16 ga. sheet metal base—3 ft. 6 in. high.
SAMPLE SPECIFICATION
No. 10 ga. wire woven into 1 1/2" diamond mesh clinched to 1 1/2 x 1/4 "C" type vertical channel frames. Horiz. frames to be 1 1/2 H.R. channel. Top capping bar to be 2 1/2 x 1 cont. channel fastened with U bolts @ 2' 4" c. c. Part to have center reinforcing channels 36" from floor. Finish to be one shop coat machine gray enamel.

Memphis Wire and Iron Works, Inc.
901/775-0107

Memphis Wire and Iron Works, Inc.
901/775-0107

