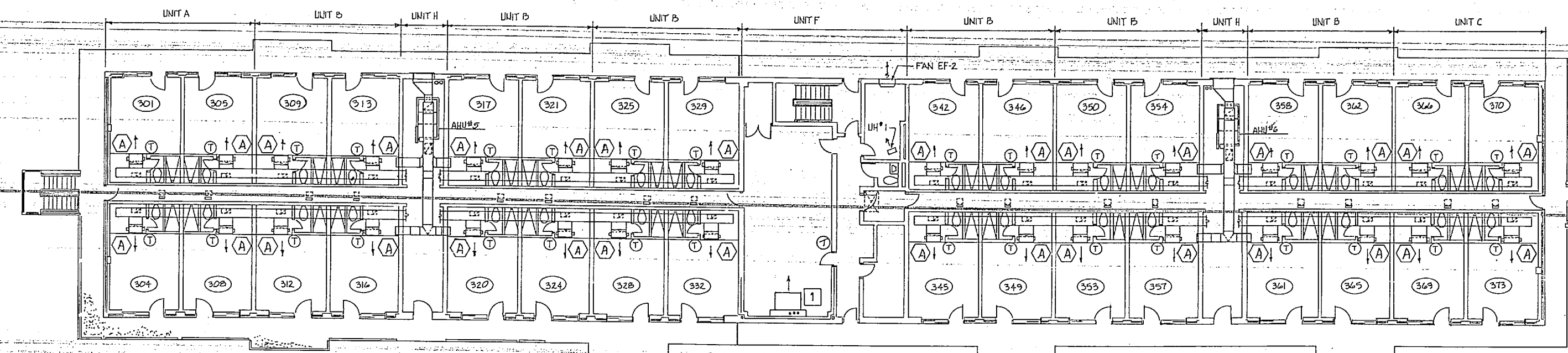
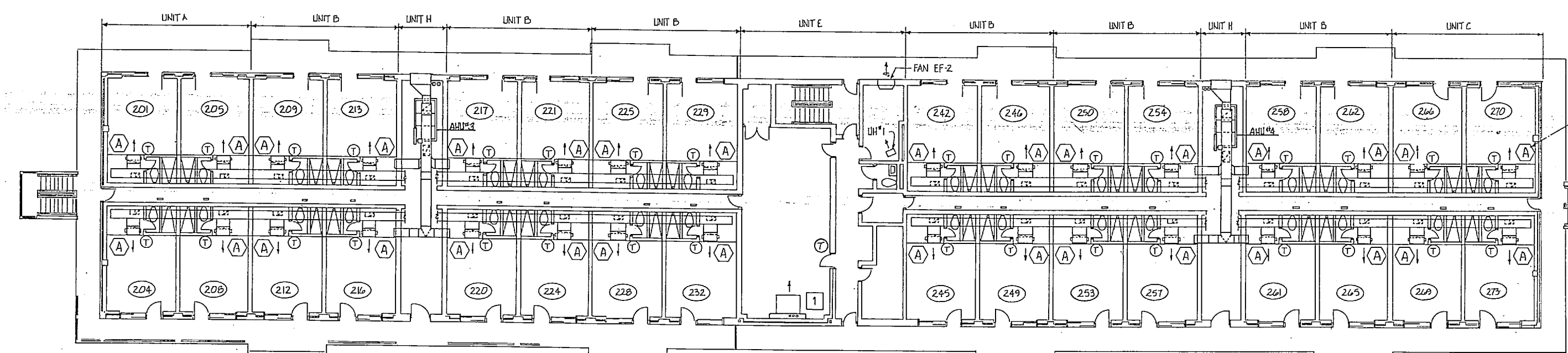


~~M-440~~

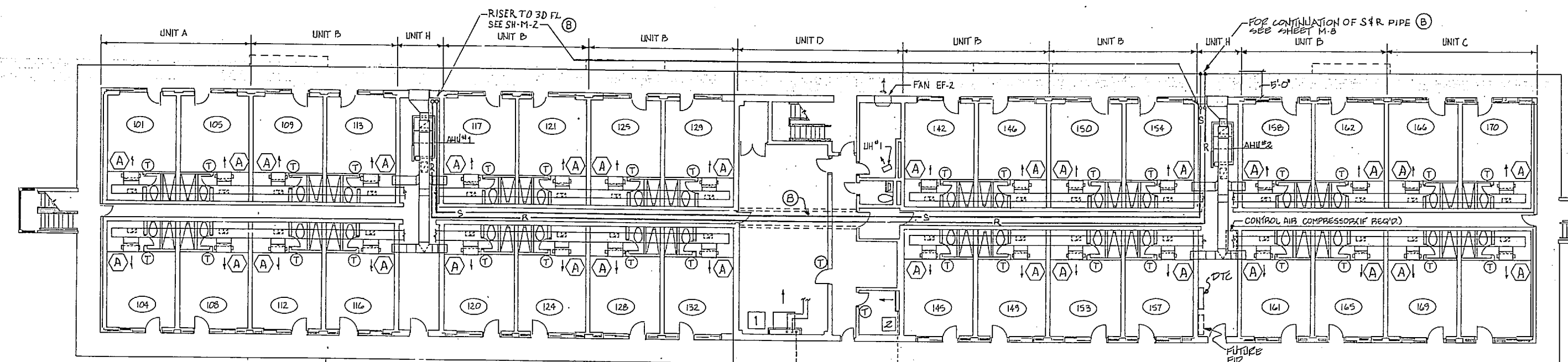
REVISIONS			
SYM	DESCRIPTION	PREP'D BY	DATE
(A)	REVISED AS-BUILT	GB	02/04/88
(B)	CLARIFY S&R PIPE		3/8/96



THIRD FLOOR PLAN
3/32" = 1'-0"



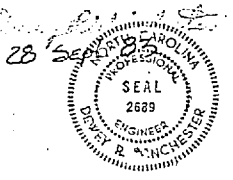
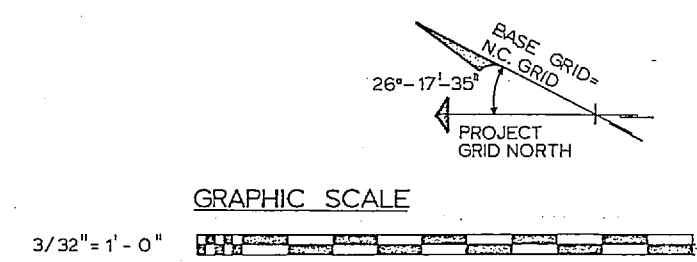
SECOND FLOOR PLAN
3/32" = 1'-0"



FIRST FLOOR PLAN
3/32" = 1'-0"
M-440, M-445, & M-450

NOTE: (B)
SEE SH-M-3 FOR TYPICAL MECH RM (UNIT H)
S&R PIPE AND AHU'S CONNECTIONS.
SEE SH-M-3 FOR LEGEND

- NOTES:
1. SEE TYPICAL UNIT PLANS FOR DUCT AND PIPING ON SHEET M-2
 2. FOR SCHEDULES SEE SHEET M-4
 3. TYPICAL FOR BUILDING M-445 AND BUILDING M-440
 4. FOR LEGEND SEE SHEET M-3



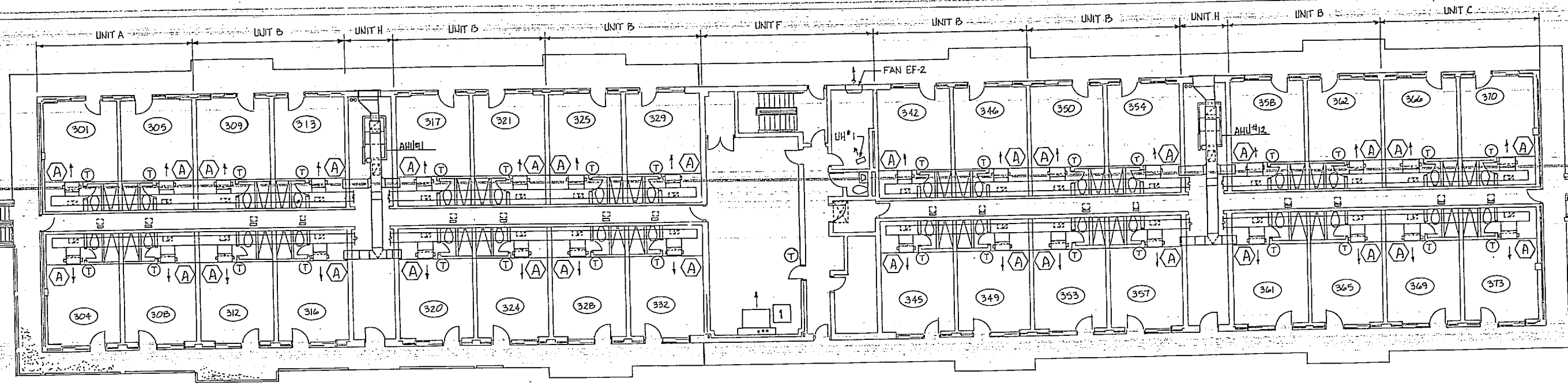
RECORD DRAWING		LETTER DATED 4 FEB 1988		M-1a
J. N. PEASE ASSOCIATES ARCHITECTS - ENGINEERS - PLANNERS CHARLOTTE NORTH CAROLINA		DEPARTMENT OF THE NAVY NAVAL FACILITIES ENGINEERING COMMAND ATLANTIC DIVISION NAVFAC STATION		
MARINE CORPS BASE CAMP LEJUNE N.C.		UNACCOMPANIED ENLISTED PERSONNEL HOUSING M-445, M-440 BUILDING M-450 FLOOR PLANS		
SIZE	CODE IDENT. NO	NAVFAC DRAWING NO		
F	80091	4104031		
CONSTR CONTR NO	NO 62470-82-B-2244	UNIT	72 OF 92	
SCALE	3/32" = 1'-0"	DATE	82-B-2244	
FOR STD FOR COMMANDER/NAVFAC		SFD DWG. NO. 204031		

Bldg. M 440

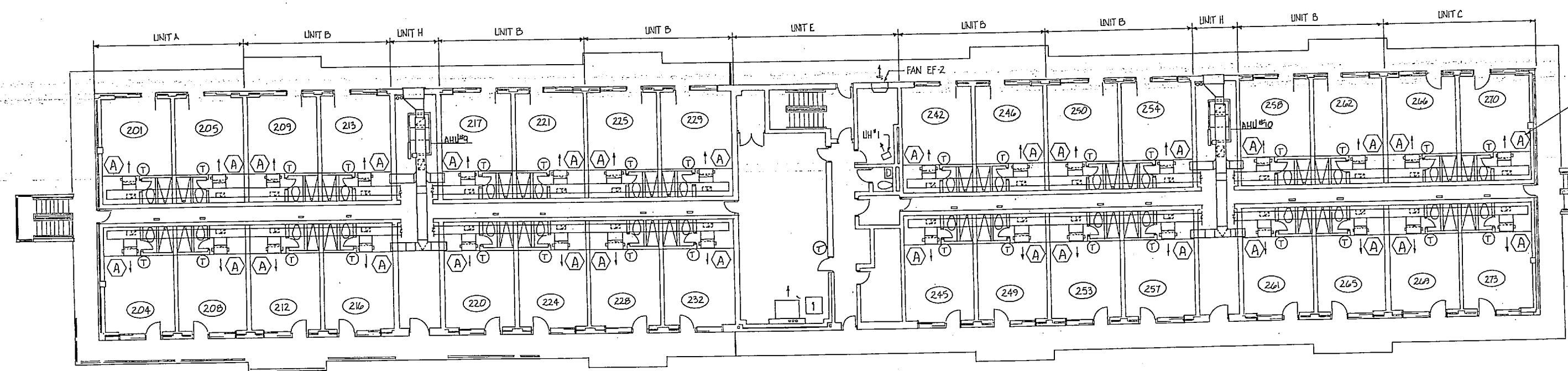
1910

1910

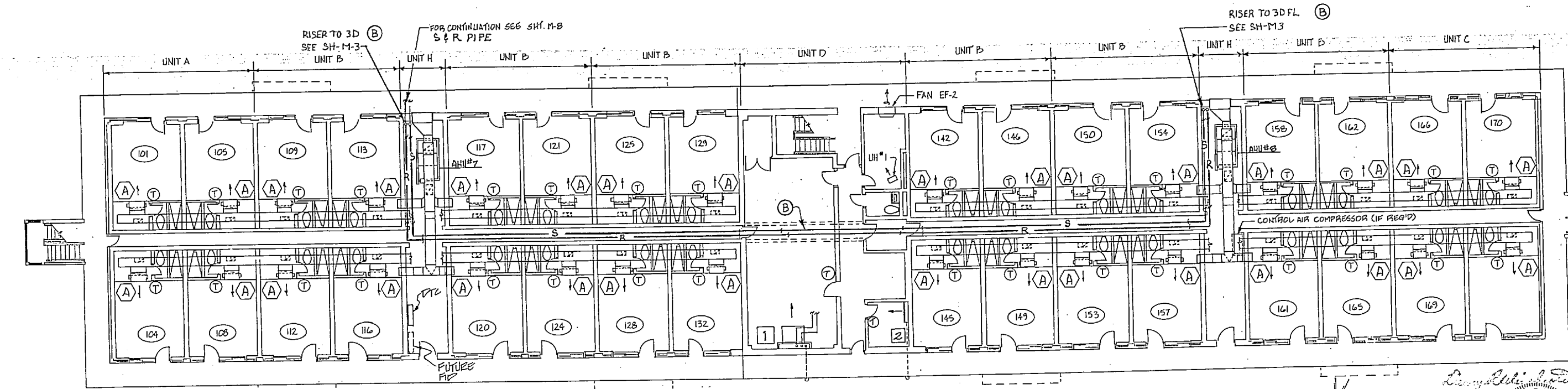
REV	DESCRIPTION	PREP BY	DATE	APPROVED
(A)	REVISED AS-BUILT	GB	02/04/88	GLP
(B)	CLARIFY S & R PIPE		2/8/96	RKL



THIRD FLOOR PLAN
3/32" = 1'-0"



SECOND FLOOR PLAN
3/32" = 1'-0"

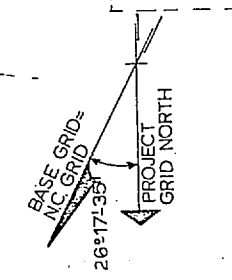
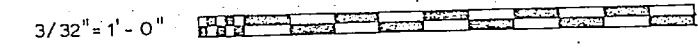


FIRST FLOOR PLAN
3/32" = 1'-0"
M-430 & M-435

NOTE:
SEE SH-M3 FOR TYPICAL MECH. RM. (UNIT H)
S & R PIPE AND AHU'S CONNECTIONS
SEE SH-M3 FOR LEGEND

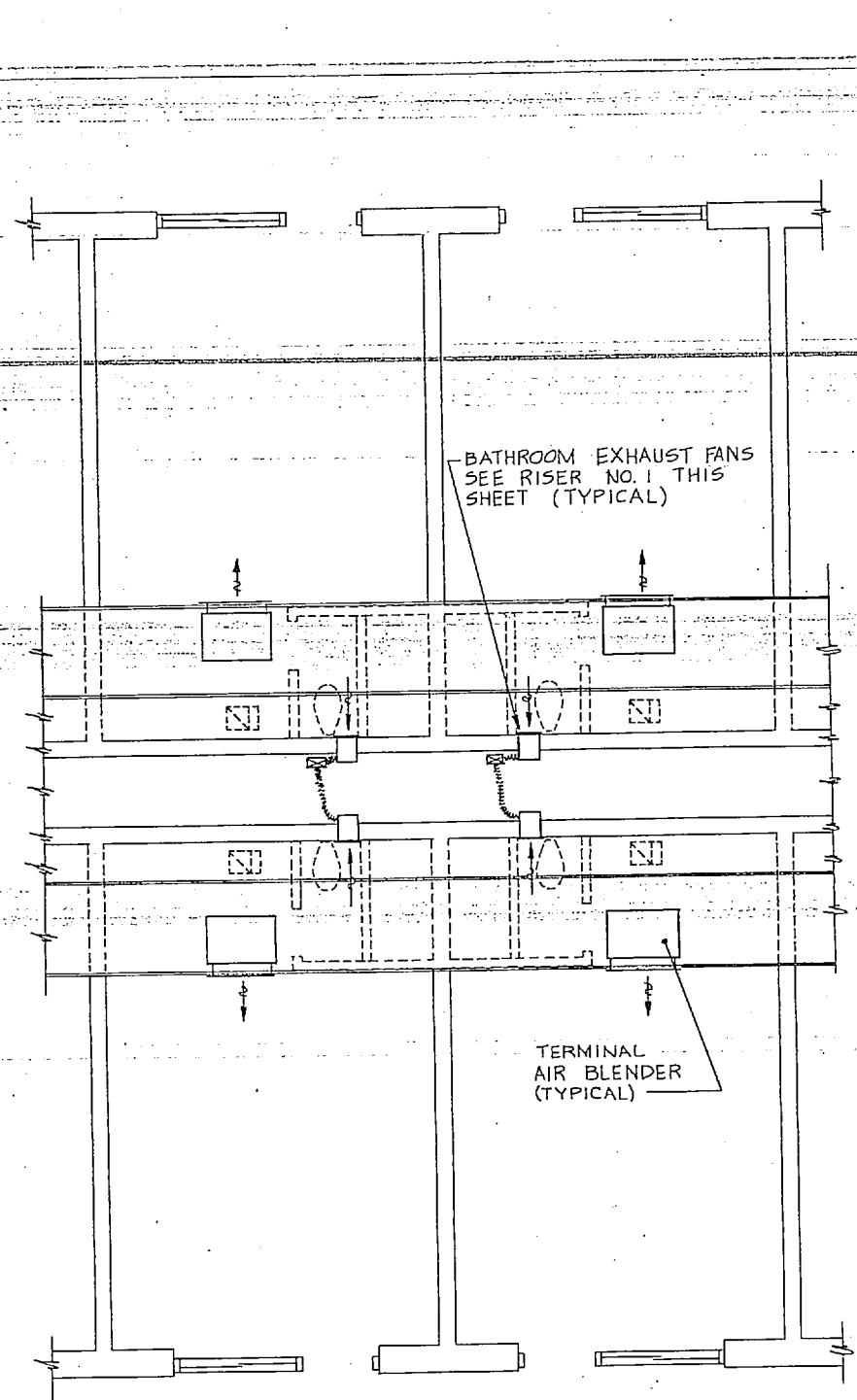
- NOTES:
- SEE TYPICAL UNIT PLANS FOR DUCT AND PIPING ON SHEET M-2
 - FOR SCHEDULES SEE SHEET M-4
 - TYPICAL FOR BUILDING M-430
 - FOR LEGEND SEE SHEET M-3

GRAPHIC SCALE

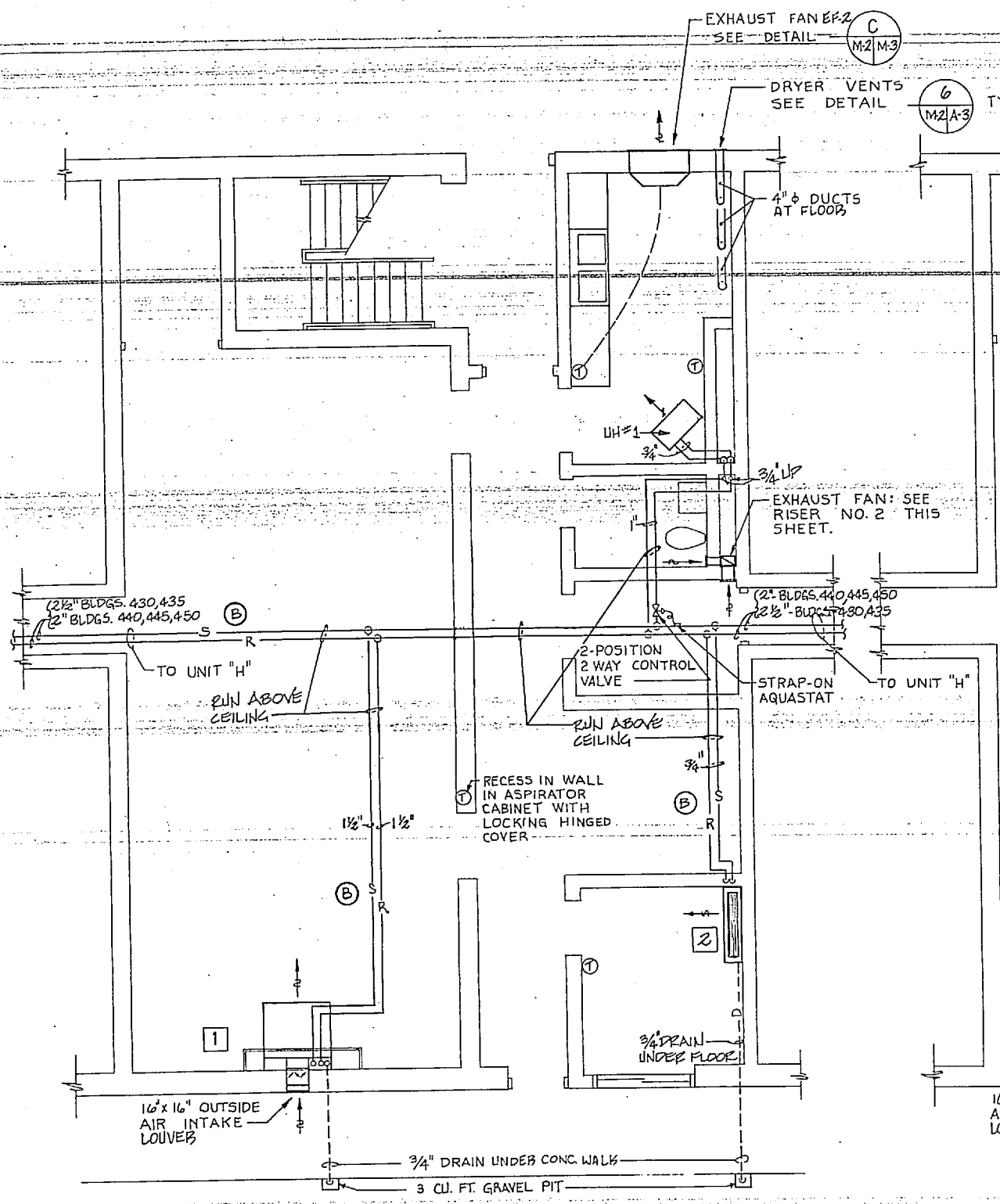


RECORD DRAWING		LETTER DATED		4 FEB 1988		M-1b	
J. N. PEASE ASSOCIATES ARCHITECTS - ENGINEERS - PLANNERS CHARLOTTE NORTH CAROLINA		DEPARTMENT OF THE NAVY NAVAL FACILITIES ENGINEERING COMMAND ATLANTIC DIVISION NAVAFAC, VIRGINIA		MARINE CORPS BASE CAMP LEJEUNE N.C.		UNACCOMPANIED ENLISTED PERSONNEL HOUSING. BUILDING M-430 FLOOR PLANS	
DRAWN BY: S.E. DELONG CHECKED BY: R.S. DATE: 09 NOV 1987		OFFICER IN CHARGE: R.S. DATE: 09 NOV 1987		NAVAFAC DRAWING NO: 4104032		CONSTR. CONTR. NO: N62470-82-B-2244	
SCALE: 3/32" = 1'-0"		SHEET: 73 OF 92		EFD DWG. NO. 204032			

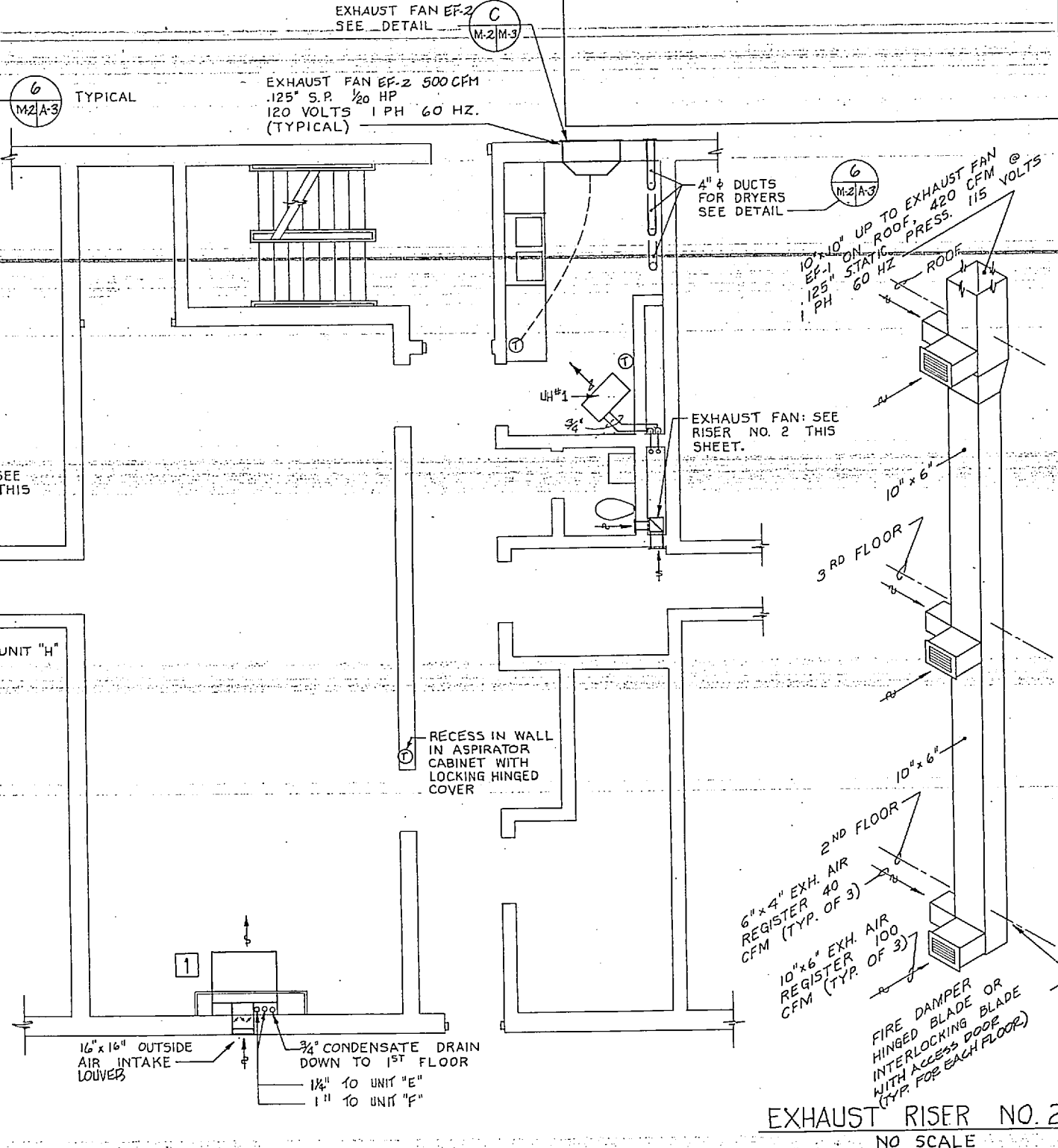
REVISIONS			
NO.	DESCRIPTION	PREP BY	DATE
(A)	REVISED AS-BUILT	GB	02/04/88
(B)	CLARIFY S.F.R. PIPE		3/8/86



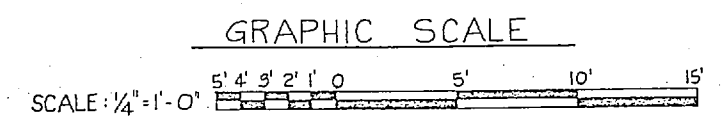
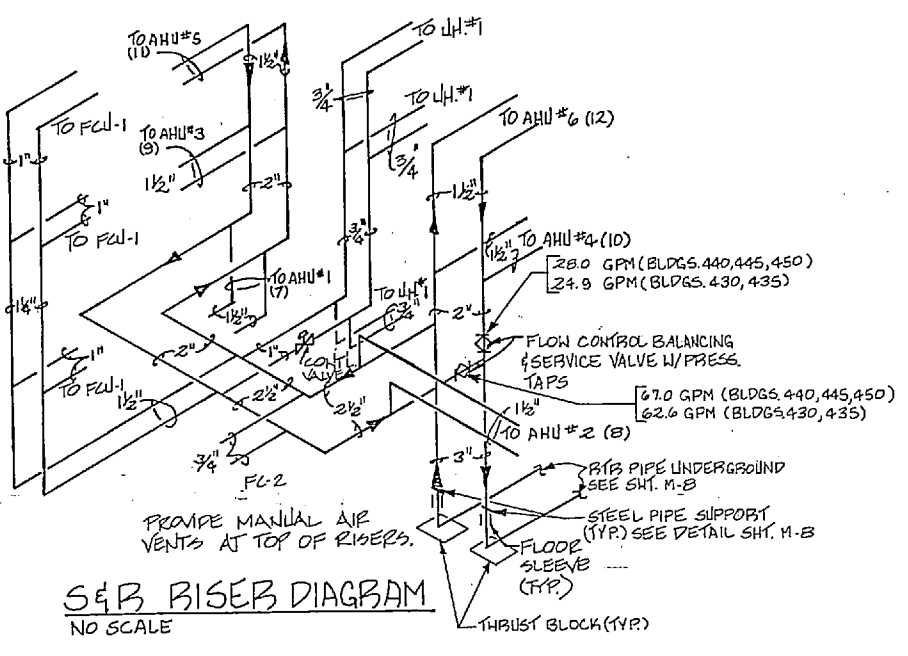
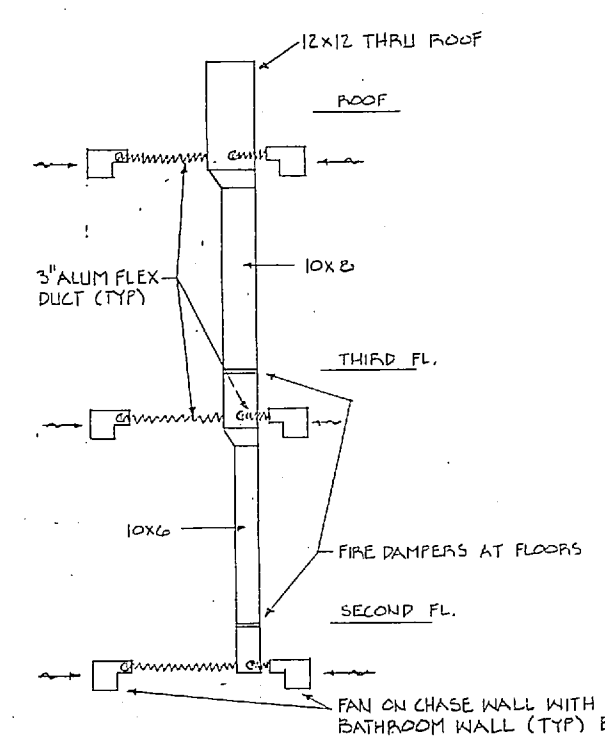
TYPICAL UNITS A, B, & C
SCALE: 1/4" = 1'-0"



TYPICAL UNIT "D"
SCALE: 1/4" = 1'-0"



TYPICAL UNITS "E" AND "F"
SCALE: 1/4" = 1'-0"



RECORD DRAWING LETTER DATED 4 FEB 1988 M-2

J. N. PEASE ASSOCIATES ARCHITECTS - ENGINEERS - PLANNERS CHARLOTTE NORTH CAROLINA

DEPARTMENT OF THE NAVY NAVAL FACILITIES ENGINEERING COMMAND

ATLANTIC DIVISION NORFOLK, VIRGINIA

MARINE CORPS BASE CAMP LEJEUNE N.C.

UNACCOMPANIED ENLISTED PERSONNEL HOUSING.

UNITS A, B, C, D, E, F & DETAILS

NAVAC DRAWING NO. 4104033

CONSTR. CONTR. NO. NS2470-82-B-2244

SHEET 74 OF 92

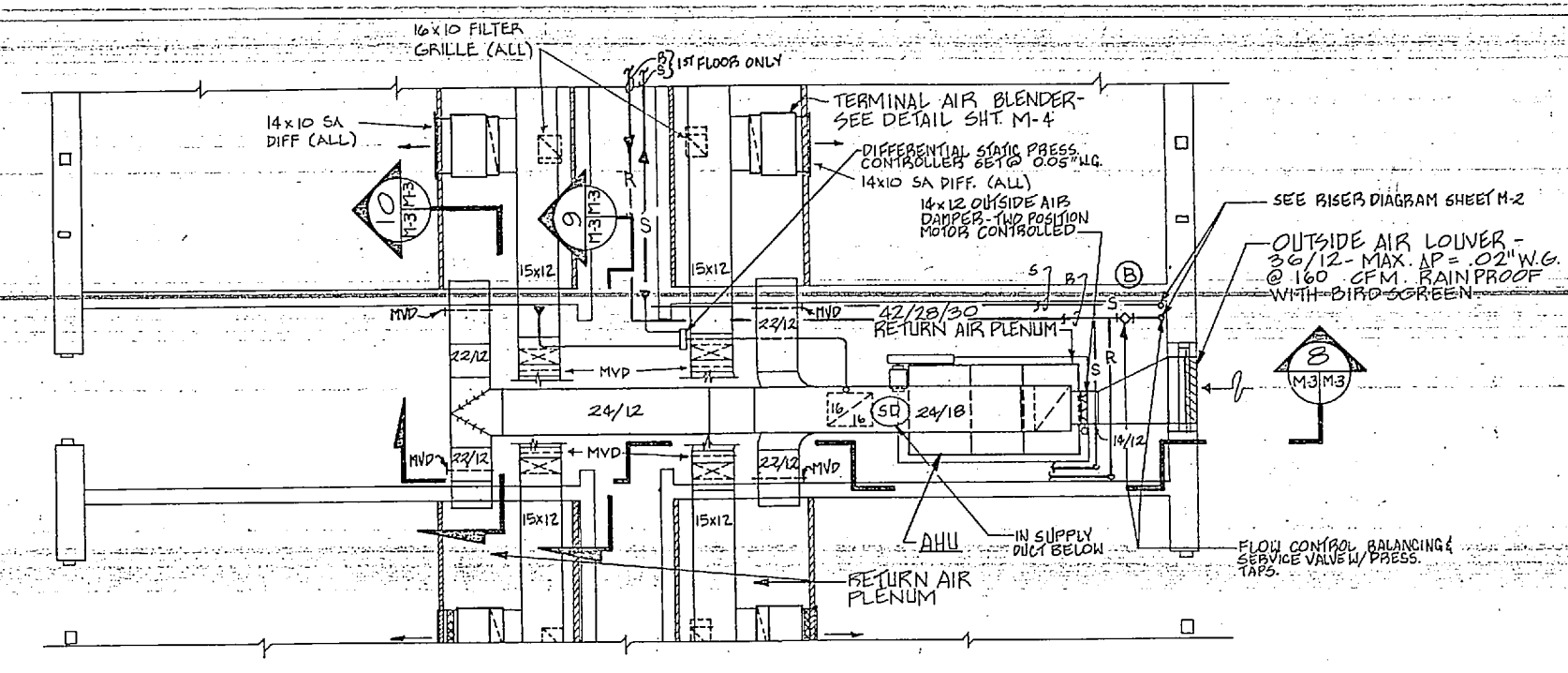
80091

82-B-2244

204033

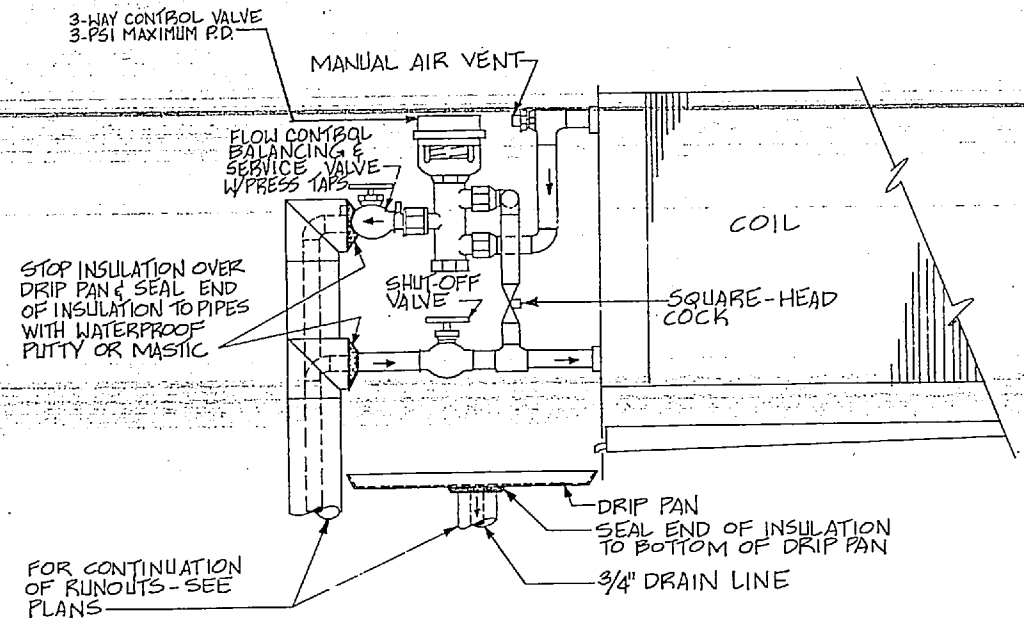


REVISIONS				
STA	DESCRIPTION	PREP BY	DATE	APPROV
(A)	REVISED AS-BUILT	GB	02/04/88	GLP
(B)	CLARIFY S F R PIPE		3/8/78	RKW

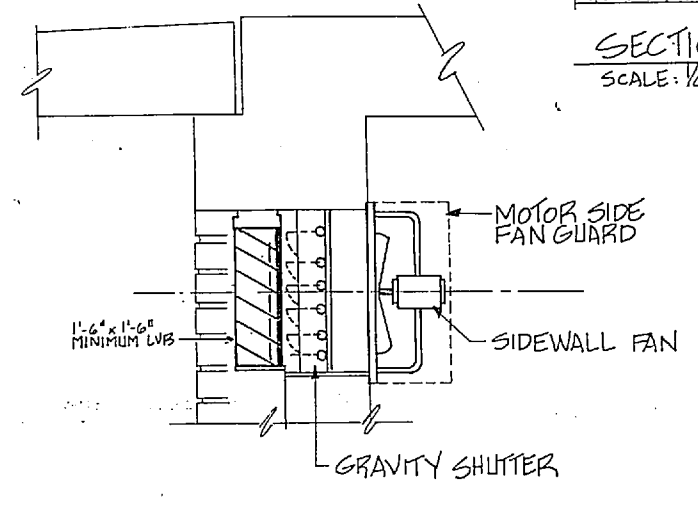
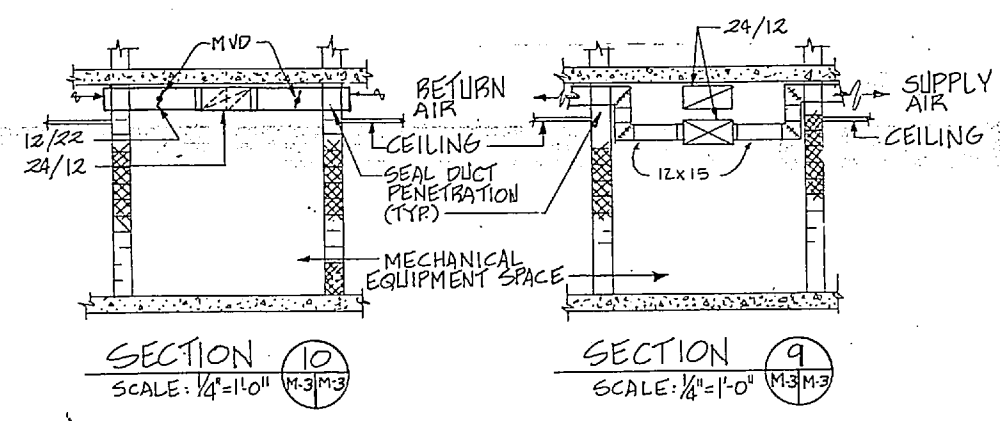
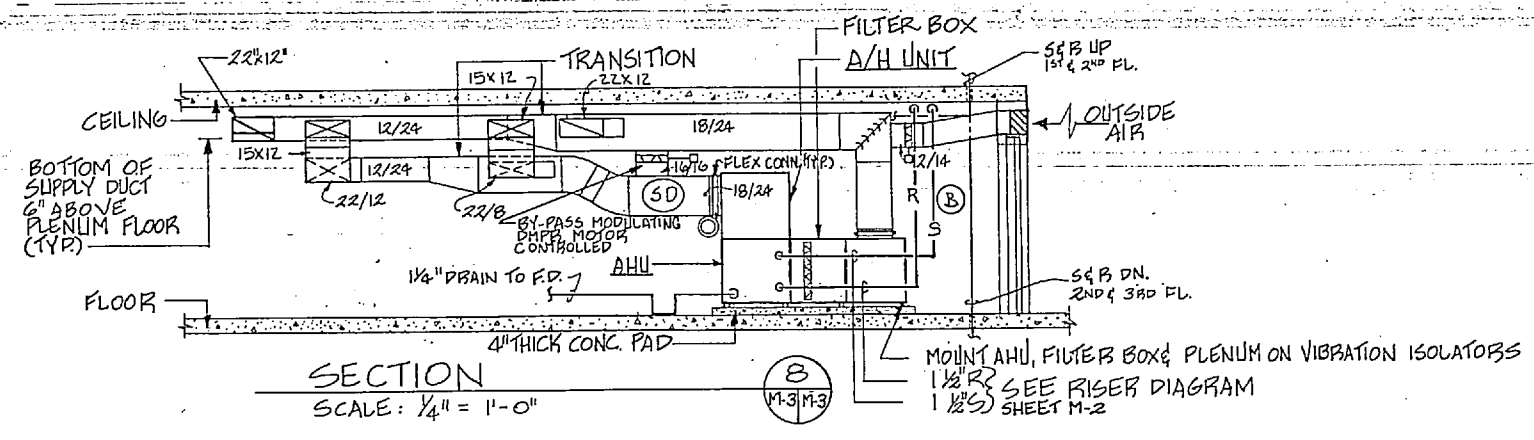


PART FLOOR PLAN-MECHANICAL EQUIPMENT SPACE- UNIT "H"
SCALE: 1/4" = 1'-0"

NOTE: DUCT SIZES SHOWN FOR SUPPLY, RETURN AND OUTSIDE AIR ARE SHEET METAL SIZES. ALLOWANCE HAS BEEN MADE FOR INTERNAL ACCOUTICAL DUCT INSULATION.

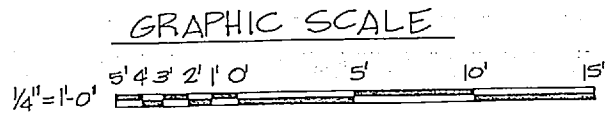
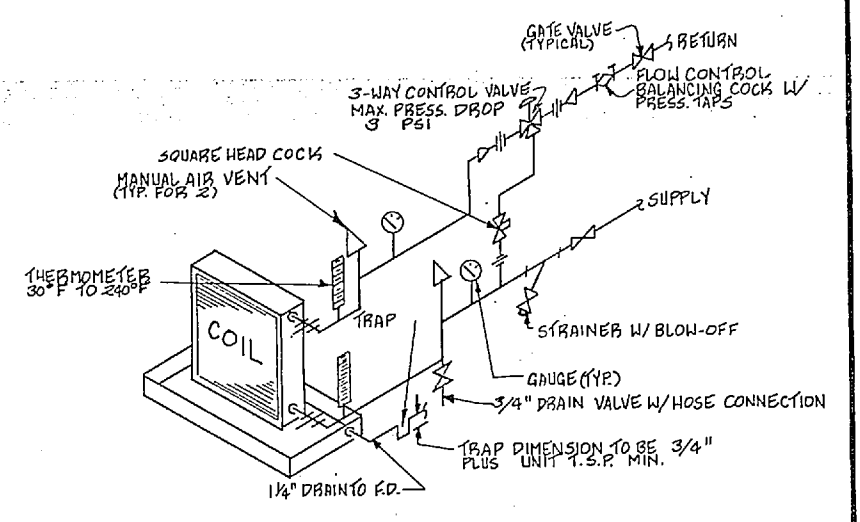


UNIT HEATER DETAIL (B)
NO SCALE (TYP. FOR UH-1) M-3M-3



(C) SIDEWALL EXHAUST FAN DETAIL EF-2
A-B-A-3-M1 M-3M-3 NO SCALE

- SYMBOL LEGEND**
- DHW DOMESTIC HOT WATER SUPPLY
 - DHWR DOMESTIC HOT WATER RETURN
 - CHWS CHILLED WATER SUPPLY
 - CHWR CHILLED WATER RETURN
 - HWS HOT WATER SUPPLY
 - HWR HOT WATER RETURN
 - DUAL TEMP SUPPLY DUAL TEMP SUPPLY
 - DUAL TEMP RETURN DUAL TEMP RETURN
 - DRAIN DRAIN
 - HPS HIGH PRESSURE SUPPLY (STEAM) 100 PSIG
 - HPR HIGH PRESSURE RETURN (CONDENSATE)
 - MPS MEDIUM PRESSURE SUPPLY (STEAM) 20 PSIG
 - MPR MEDIUM PRESSURE RETURN (CONDENSATE)
 - CW COLD WATER SERVICE
 - GV GLOBE VALVE
 - HEV HOSE END GLOBE VALVE
 - BV BUTTERFLY VALVE
 - S STRAINER
 - UNION UNION
 - 2-WAY CONTROL VALVE 2-WAY CONTROL VALVE
 - 3-WAY CONTROL VALVE 3-WAY CONTROL VALVE
 - ECR ECCENTRIC REDUCER
 - TH THERMISTERS
 - PGC PRESSURE GAGE COCK
 - CV CHECK VALVE
 - PRS PRESSURE REDUCING STATION (STEAM)
 - CVA CONTROL VALVE ASSEMBLY (CVA)
 - MVD MOTOR OPERATED DAMPER
 - ACC ACCESS PANEL/DOOR
 - FAT FLOAT AND THERMOSTAT
 - PRV PRESSURE REDUCING VALVE
 - PD PUMP DISCHARGE (CONDENSATE)
 - FCU FAN COIL UNIT
 - UH UNIT HEATER
 - AHU AIR HANDLING UNIT
 - ACC AIR COOLED PACKAGE CHILLER
 - FD FLOOR DRAIN
 - OPD OPPOSED BLADE DAMPER (MOTOR OPERATED)
 - DTA DATA TERMINAL CABINET
 - FID FIELD INTERFACE DEVICE
 - HPD HIGH PRESSURE DRIP ASSEMBLY
 - MPD MEDIUM PRESSURE DRIP ASSEMBLY
 - SD SMOKE DETECTOR
 - M.O.D. MOTOR OPERATED DAMPER



RECORD DRAWING LETTER DATED 4 FEB 1988 M-3

J. N. PEASE ASSOCIATES ARCHITECT-ENGINEERS-FURNISERS
CHARLOTTE NORTH CAROLINA
MARINE CORPS BASE CAMP LEJEUNE N.C.
UNACCOMPANIED ENLISTED PERSONNEL HOUSING.

DEPARTMENT OF THE NAVY NAVAL FACILITIES ENGINEERING COMMAND
NAVAL STATION ATLANTIC DIVISION NORFOLK, VIRGINIA

DR. S.K.L. DR. S.K.L. I.C.M. DR.W. F.P.D. DR. W. DR. W. DR. W.
DATE: 02/04/88
SCALE: AS NOTED SPEC 82-B-2244 SHEET 75 OF 92
CONSTR. CONTR. NO. NS2470-82-B-2244
EFD DWG. NO. 204034

TERMINAL AIR BLENDERS						
SYMBOL	MIN. CFM	W.P. TYPE	EKT. S.P.	MAX. AMP.	VOLTS	REMARKS
(A)	260	TURBO	0.05"	0.8	72.8	COMPLETE W/SINGLE SPEED MOTOR & INTEGRAL DISCONNECT

* TAP WOUND PERMANENT SPLIT CAPACITOR.

EXHAUST FANS						
SYMBOL	CFM	EKT. S.P.	W.P. TYPE	AREA SERVED	LOCATION	REMARKS
EF-1	420	125"	1/2	TOIL/BLDG.	ROOF	115-1-60 CENT. WITH SELF ACTING BACKDRAFT DAMPER, DISC. SWITCH, BIRDSCREEN & VAR. PITCH MOTOR PULLEY
EF-2	500	125"	1/20	LAUNDRY	WALL	115-1-60 PROP. WITH WALL SHUTTER & VARIABLE SPEED CONTROLLER & MOTOR GUARD
EF-3	60	150"	3/4	SOUTH	WALL	115-1-60 CENT. WITH GRIFFLE & BACKDRAFT DAMPER
EF-4	4350	250"	3/4	MECH. BLDG.	ROOF	600-3-60 CENT. WITH SELF-ACTING BACKDRAFT DAMPER, DISC. SWITCH, BIRDSCREEN & VARIABLE PITCH MOTOR PULLEY
EF-5	1345	125"	1/2	LIFT STA.	WALL	115-1-60 CENT. WITH SELF-ACTING BACKDRAFT DAMPER, DISC. SWITCH, BIRDSCREEN & VARIABLE PITCH MOTOR PULLEY
EF-6	215	125"	1/20	LIFT STA.	ROOF	115-1-60 CENT. WITH GRIFFLE, BACKDRAFT DAMPER, DISC. SWITCH & DISCONNECT PLUG
EF-7	215	100"	1/20	LIFT STA.	WALL	115-1-60 CENT. WITH SELF-ACTING BACKDRAFT DAMPER, DISC. SWITCH, & BIRDSCREEN
EF-8	264	230"	1/20	LIFT STA.	WALL	115-1-60 CENT. WITH SELF-ACTING BACKDRAFT DAMPER, DISC. SWITCH, & BIRDSCREEN & PROTECTIVE COATING

PUMPS							
PUMP NUMBER	TYPE SERVICE	BLDG'S SERVED	GPM	TOTAL HEAD FEET	AMP.	REMARKS	
P-1	CH. WATER	3	45 B	175	3500	4.0	460-3-60 ENDURON 3
P-2	WATER	3	315	90	1750	15	460-3-60 ENDURON 2
P-3	DOM. H.W.	3	50	50	1750	3	460-3-60 IN-LINE C
P-4	COND.	3	30	140	1750	2.5 EA.	460-3-60 CENT. C DUPLX SYS W/MECH. ALTERNATOR & W/IN. OF 45 GAL. CAP. RECEIVER

* BLDGS. M-430, M-435, M-440, M-445 & M-450

AIR COOLED CHILLERS						
SYMBOL	GPM	W.H. TOTAL CAP. (TCH)	ENTERING WATER TEMP.	LEAVING WATER TEMP.	COMP.	REMARKS
ACC-1	22.9	81	50.5°	42°	95	90°F 12 460-3-60 STEPS OF UNLOADING 100%, 83%, 50%, 33% DUAL COMPRESSORS
ACC-2	22.9	81	50.5°	42°	95	90°F 12 460-3-60 STEPS OF UNLOADING 100%, 83%, 50%, 33% DUAL COMPRESSORS

1. CONDENSER CAPACITY SHALL BE SIZED TO PROVIDE AN EFFICIENCY NOT TO EXCEED 1.7 KW PER TON INCLUDING CHLD. FANS.
2. IF THE CONDENSER AIR INTAKE IS ON THE SIDE OFF ACC UNIT, PROVIDE PROTECTIVE SCREEN OR LOUVER FOR UNIT.

FAN COIL UNITS						
UNIT NO.	COOLING CAPACITY	HEATING CAPACITY	COIL FAN MOTOR	REMARKS		
11	600	1800	1/2	HORIZ. CEILING TYPE W/OA INTAKE		
12	200	600	1/4	VEPT.		

HEAT EXCHANGER						
UNIT NO.	SERVICE	BLDG'S SERVED	GPM	ENT. WATER	LEA. WATER	REMARKS
HE-1	HEATING	3	315	159.7°F	180°F	MAX. WATER PRESS. 200 PSI. MAX. WATER TUBE VELOCITY 6.0 FPS. STEAM PRESS. 15 PSIG. STEAM FLOW 3388 BPH. MIN. FOULING FACTOR 0.001. SHELL & TUBE TYPE

* BLDGS. M-430, M-435, M-440, M-445 & M-450

SELF CONTAINED AIR CONDITIONING HEAT PUMP						
UNIT NO.	SERVICE	BLDG'S SERVED	COOLING CAPACITY	HEATING CAPACITY	REMARKS	
HP-1	HEATING/COOLING	3	19700	11500	2100	9000

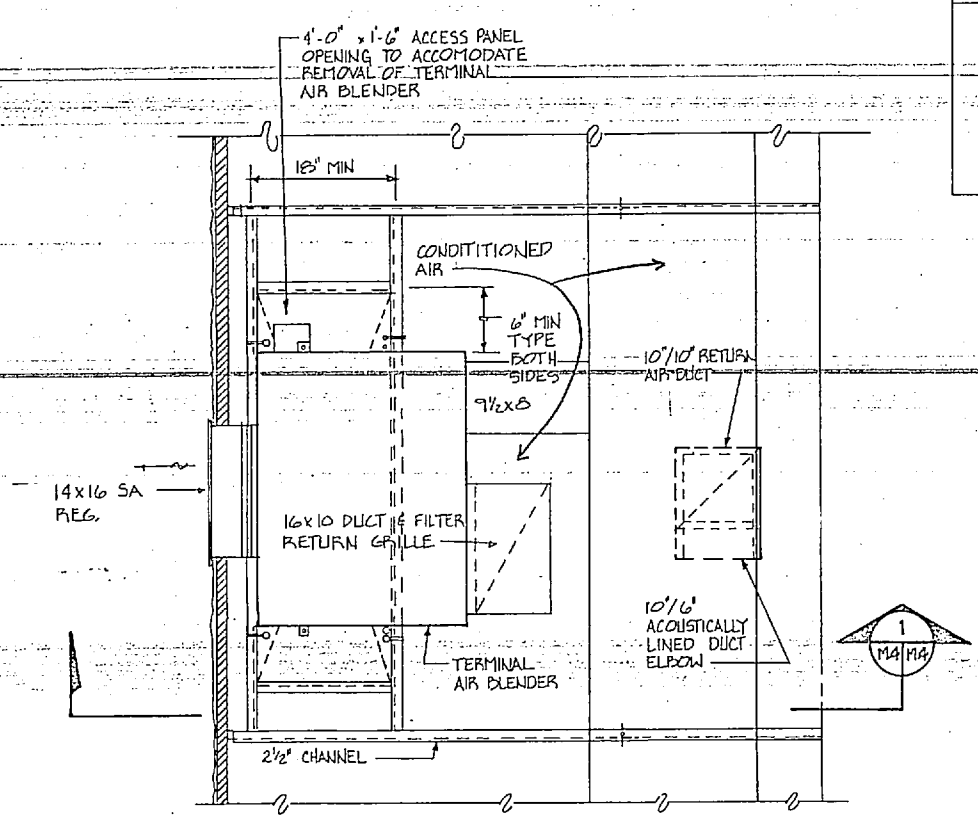
STEAM PRESSURE REDUCING VALVE SCHEDULE			
UNIT NO.	INITIAL PRESS.	FINAL PRESS.	CAPACITY LBS./HR.
PRV-1	100 PSIG	20 PSIG	1808
PRV-2	100 PSIG	20 PSIG	3409

UNIT HEATER SCHEDULE			
SYMBOL	AREA SERVED	ENT. WATER TEMP.	REMARKS
UH#1	LAUNDRY	180	115/1760
UH#2	LIFT STA.	11200	208-3-60

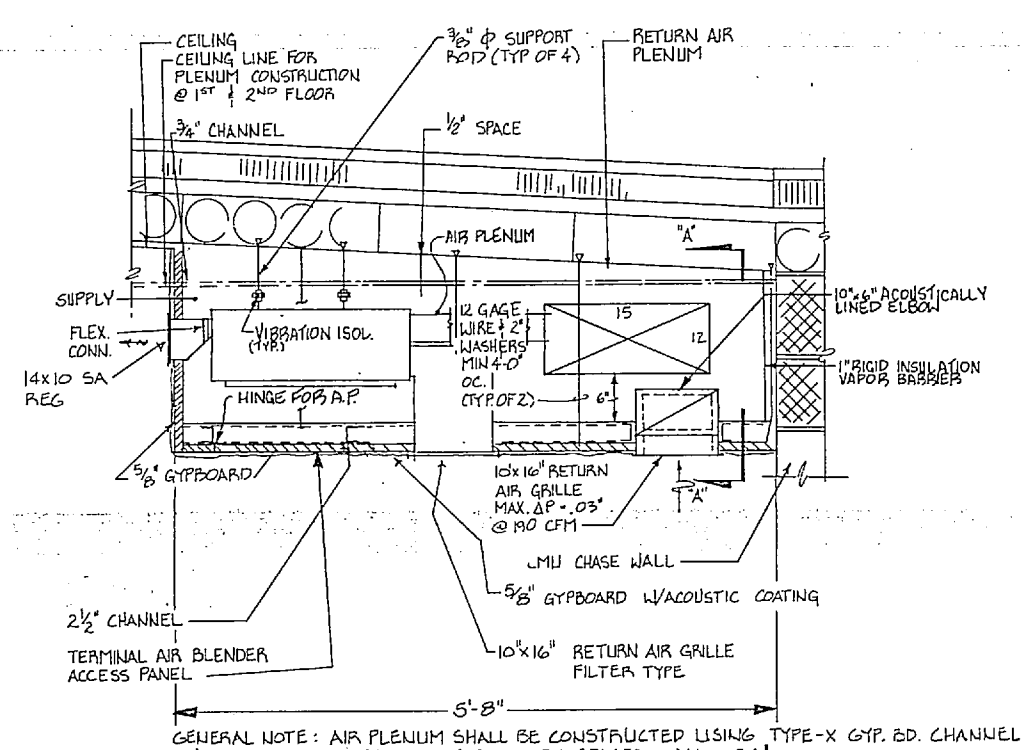
DESIGN CONDITIONS						
SEASON	OUTSIDE	INSIDE				
SUMMER	90°F DB / 78°F WB	78°F DB / 65°F WB				
WINTER	23°F DB	68°F DB				

AIR HANDLING UNITS																										
UNIT NO.	LOCATION	FAN DATA				COOLING COIL DATA					HEATING COIL DATA				REMARKS											
		TOTAL CFM	W.H. CAP. CFM	E.A.P.	APPROX. T.S.P.	MAX. H.P.	COIL C.F.M.	TOTAL LOAD B.T.U.H.	TOTAL LOAD B.T.U.H.	MAX. FACE VEL. FPM	E.A.T. °F	L.A.T. °F	COIL C.F.M.	E.W.T. °F												
1	M-440, M-445, M-450	2700	160	12"	1.5"	1.5"	2700	84078	62986	500	78.7	65.9	57.1	56.0	4.2	8	0.80	4	2700	92196	500	65.4	97	9.4	180	1.2
2		2500					2500	80100	59400		78.8	65.9	56.8	55.7					2500	81530		65.1	99	9.0		1.2
3		2500					2500	80100	59400		78.8	65.9	56.8	55.7					2500	80730		65.1	95	9.0		1.2
4		2700					2700	83957	63277		78.7	65.8	57.0	55.9					2700	83398		65.4	94	9.4		1.2
5		2700					2700	83957	63277		78.7	65.8	57.0	55.9					2700	97978		65.4	99	9.4		1.2
6	M-430, M-435, M-450	2700					2700	83957	63277		78.7	65.8	57.0	55.9					2700	92146		65.4	97	9.4		1.2
7	M-430, M-435	2100					2100	71915	49469		79.0	66.0	56.1	55.0					2100	81627		64.6	105	8.0		1.2
8		2100					2100	71915	49469		79.0	66.0	56.1	55.0					2100	91627		64.6	105	8.0		1.2
9		2000					2000	64300	49464		79.0	66.1	56.1	55.0					2000	81216		64.4	102	7.8		1.2
10		2300					2300	75459	55155		78.9	66.0	56.7	55.5					2300	82220		64.9	98	8.4		1.2
11		2400					2400	80244	58061		78.8	66.0	56.4	55.3					2400	90720		65.0	100	9.0		1.2
12	M-430, M-435	2200	160	12"	1.5"	1.5"	2200	73557	53222	500	78.8	66.0	56.4	55.3	4.2	8	0.80	4	2200	93139	500	64.8	104	8.2	180	1.2

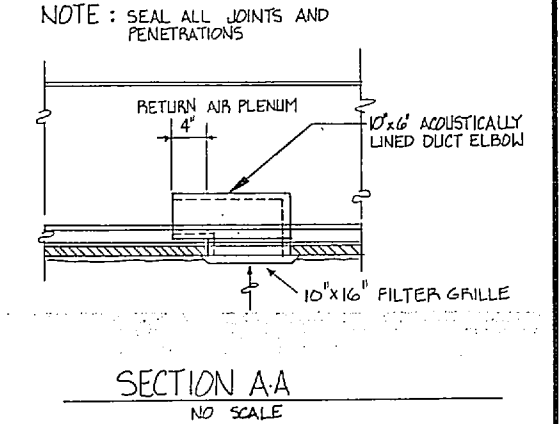
1. AIR HANDLING UNIT DIMENSIONS ARE CRITICAL. MUST FIT IN SPACE PROVIDED WITH MANUFACTURER'S CLEARANCES OBSERVED.
2. PROVIDE ADJUSTABLE MOTOR SHEAVE. 3. HEMA MOTOR STARTER SIZE 00.



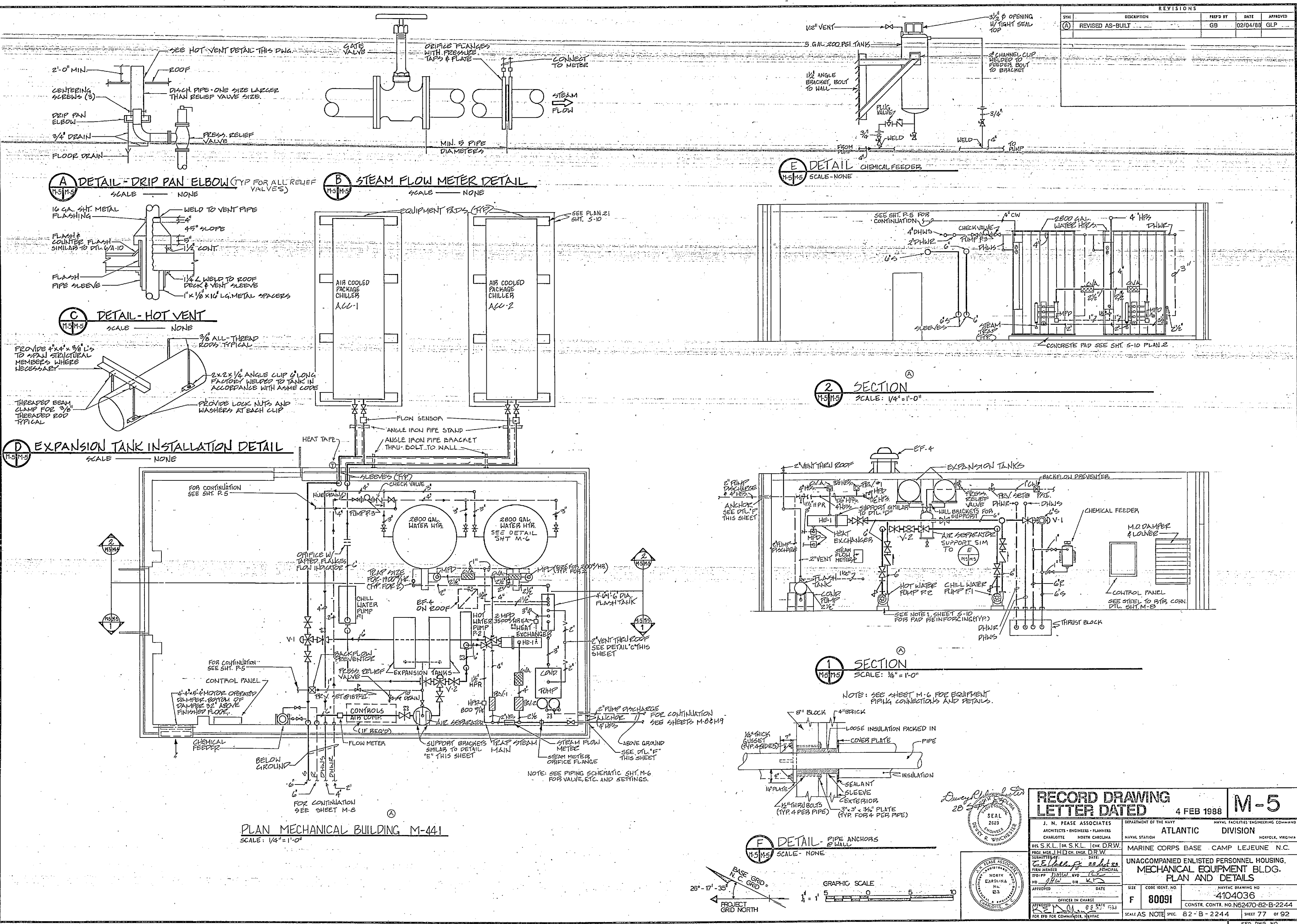
TERMINAL AIR BLENDER - PLAN
NO SCALE



TERMINAL AIR BLENDER - SECTION
NO SCALE



RECORD DRAWING		LETTER DATED 4 FEB 1988		M-4	
J. N. PEASE ASSOCIATES ARCHITECTS - ENGINEERS - PLANNERS CHARLOTTE NORTH CAROLINA		DEPARTMENT OF THE NAVY NAVAL STATION ATLANTIC DIVISION NAVAL FACILITIES ENGINEERING COMMAND		MARINE CORPS BASE CAMP LEJEUNE N.C.	
DR. SKL IN SKL 10M DRW PREP. BY: J. N. PEASE DATE: 02/04/88		UNACCOMPANIED ENLISTED PERSONNEL HOUSING. SCHEDULES & TAB PLAN		SHEET 76 OF 92	
APPROVED: [Signature]		OFFICE IN CHARGE		NAVAL DRAWING NO. 4104035	
FOR USE FOR COMMARNAV		SCALE NONE		CONST. CONTR. NO. NS2470-E2-B-2244	



REVISIONS				
NO.	DESCRIPTION	DATE	BY	APP'D
(A)	REVISED AS-BUILT	02/04/88	GB	GLP

A DETAIL - DRIP PAN ELBOW (TYP FOR ALL RELIEF VALVES)
SCALE - NONE

B STEAM FLOW METER DETAIL
SCALE - NONE

E DETAIL - CHEMICAL FEEDERS
SCALE - NONE

C DETAIL - HOT VENT
SCALE - NONE

2 SECTION
SCALE: 1/4" = 1'-0"

D EXPANSION TANK INSTALLATION DETAIL
SCALE - NONE

1 SECTION
SCALE: 1/8" = 1'-0"

PLAN MECHANICAL BUILDING M-441
SCALE: 1/4" = 1'-0"

F DETAIL - PIPE ANCHORS
SCALE - NONE

RECORD DRAWING
LETTER DATED 4 FEB 1988 **M-5**

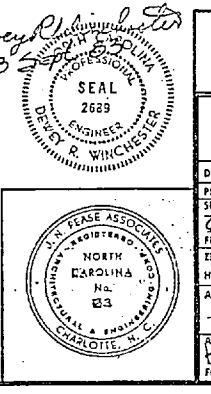
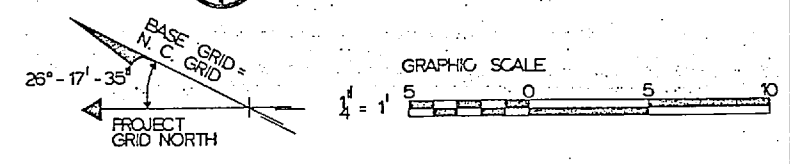
J. N. PEASE ASSOCIATES
ARCHITECTS - ENGINEERS - PLANNERS
CHARLOTTE, NORTH CAROLINA

DEPARTMENT OF THE NAVY
NAVAL FACILITIES ENGINEERING COMMAND
ATLANTIC DIVISION
NAVAFAC BRANFORD

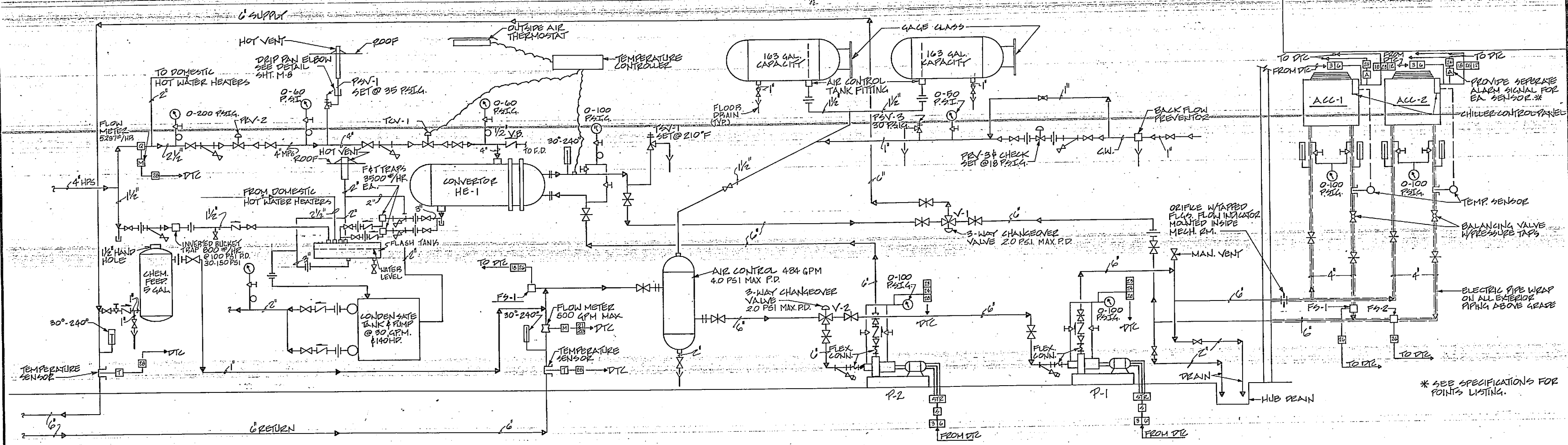
UNACCOMPANIED ENLISTED PERSONNEL HOUSING.
MECHANICAL EQUIPMENT BLDG.
PLAN AND DETAILS

NAVAC DRAWING NO. 4104036
CONSTR. CONTR. NO. N62470-82-B-2244
SCALE AS NOTED SPEC. 82-B-2244 SHEET 77 OF 92

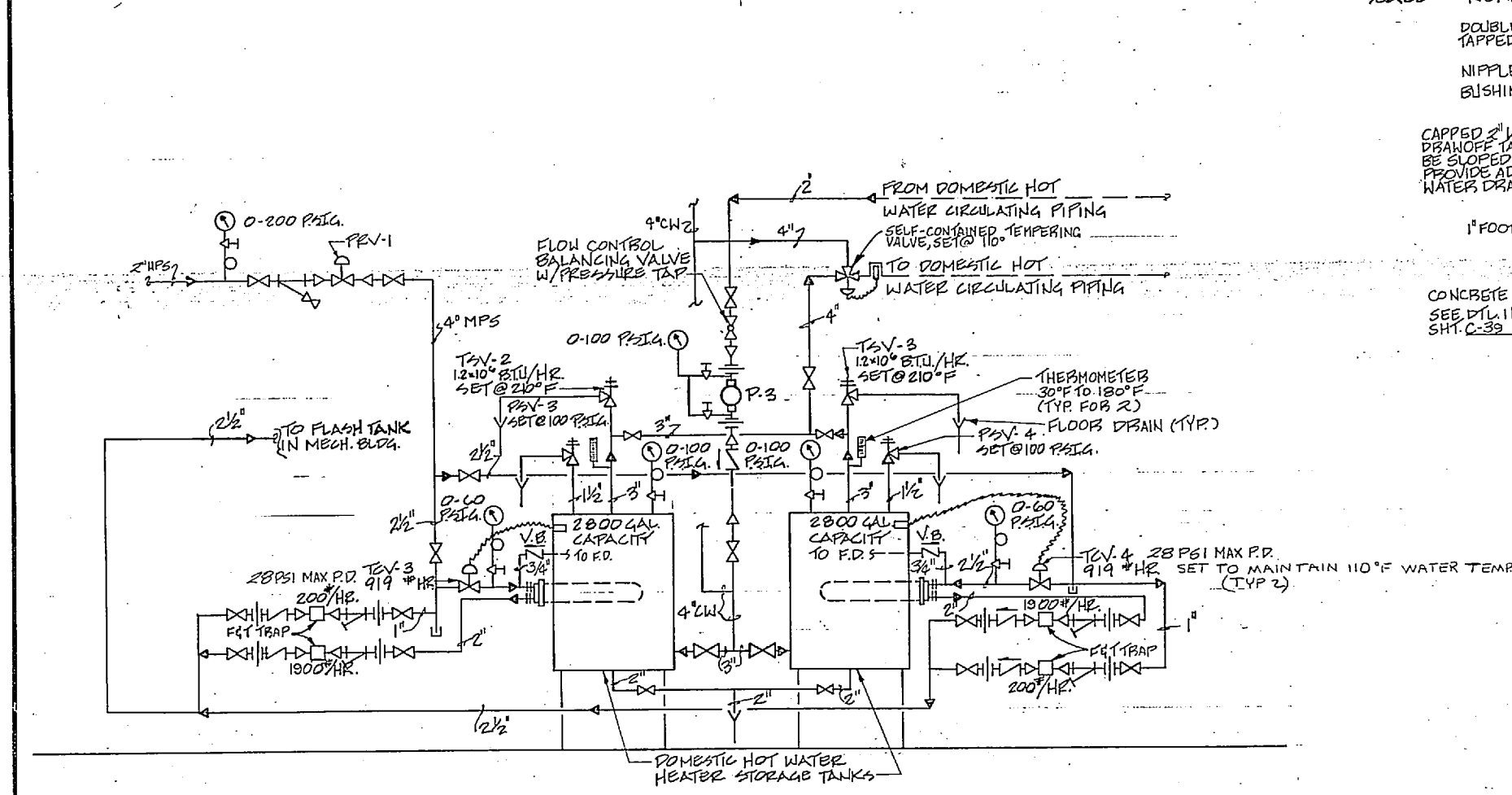
APPROVED: [Signature]
DATE: 28 SEP 1988



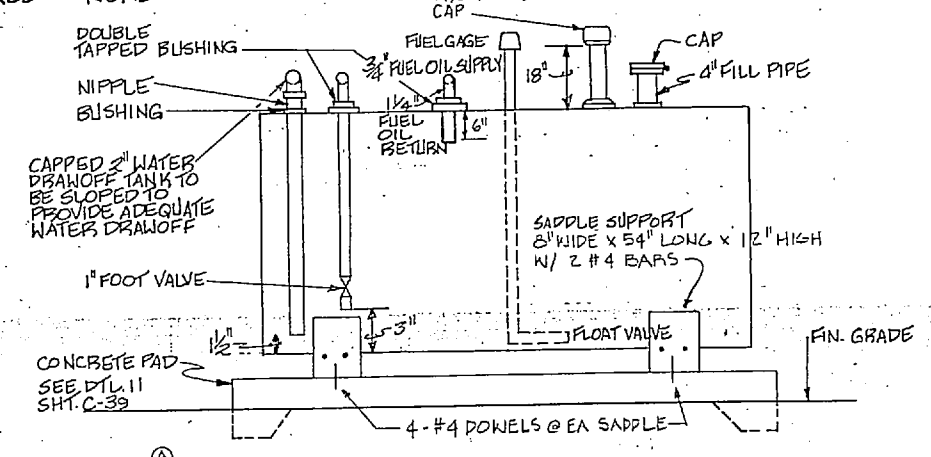
REVISIONS			
NO.	DESCRIPTION	PREP'D BY	DATE
(A)	REVISED AS-BUILT	GB	02/04/88



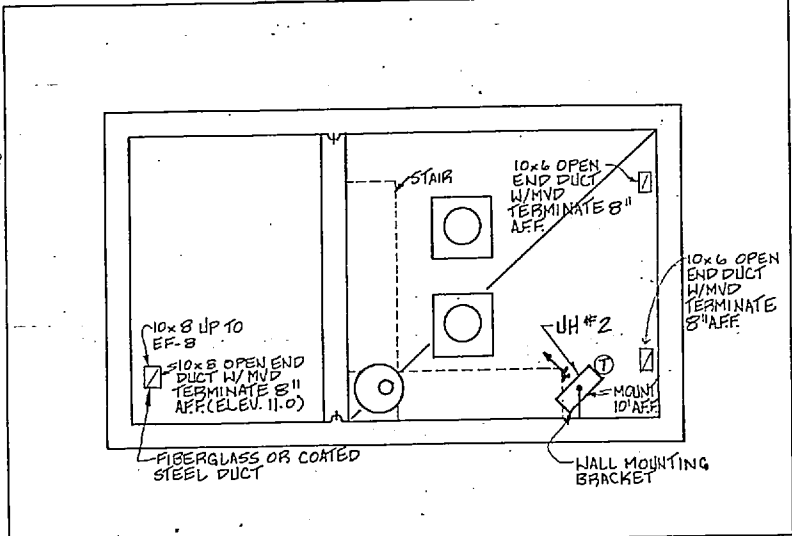
PIPING & CONTROL SCHEMATIC FOR CHILLED/HOT WATER SYSTEMS
SCALE - NONE



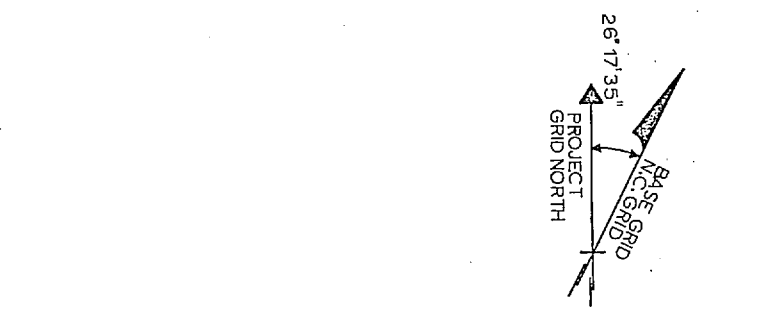
DOMESTIC HOT WATER STORAGE HEATER PIPING
SCALE - NONE



ABOVE GROUND FUEL OIL STORAGE TANK
NO SCALE

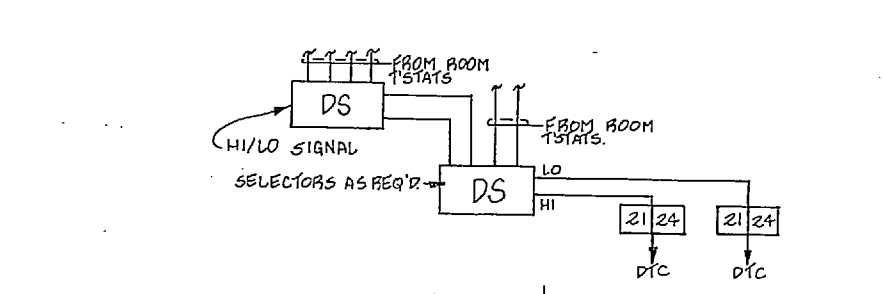
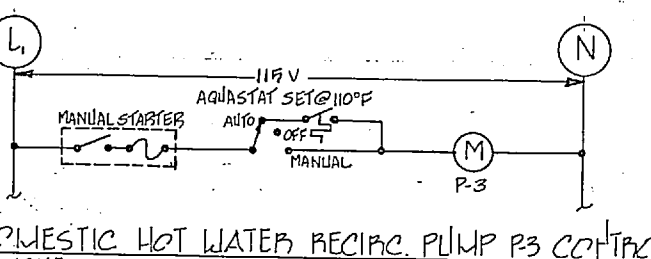
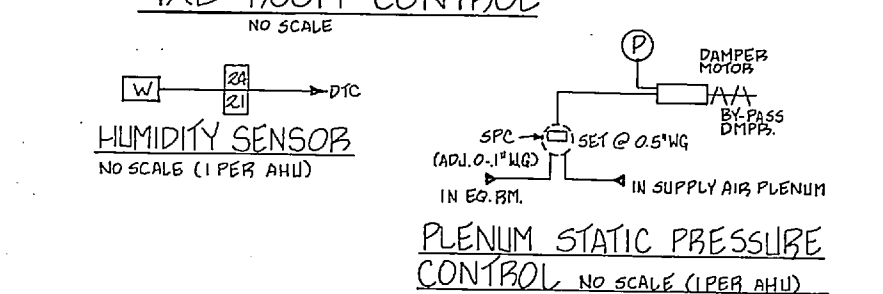
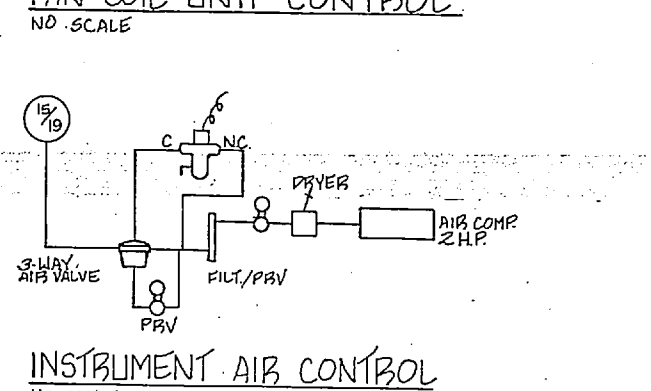
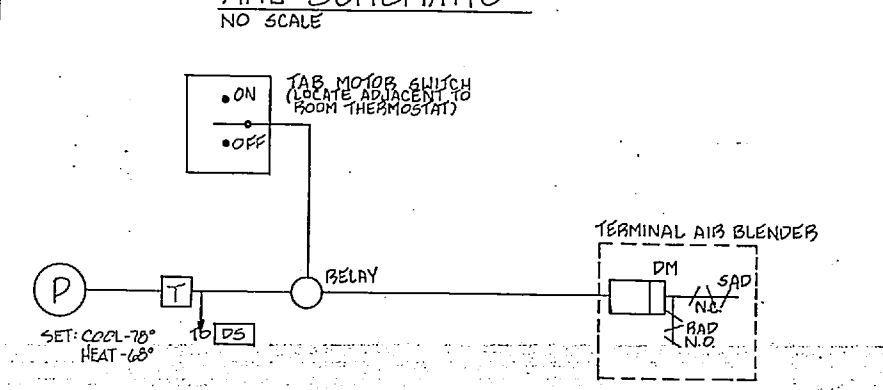
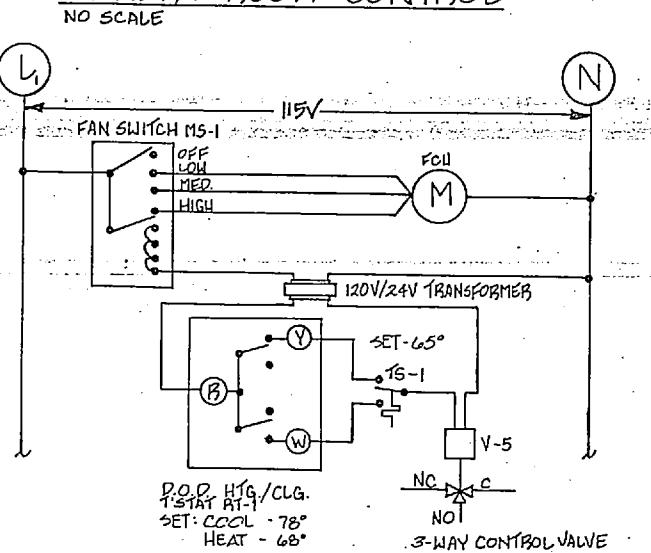
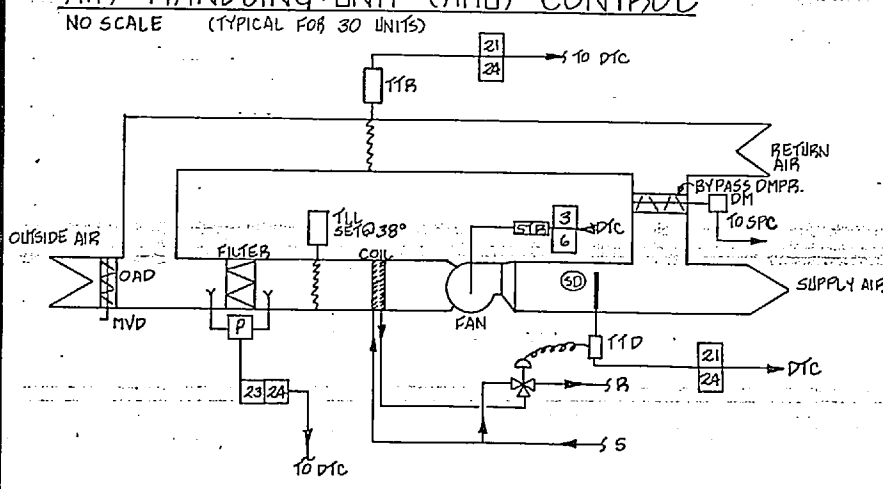
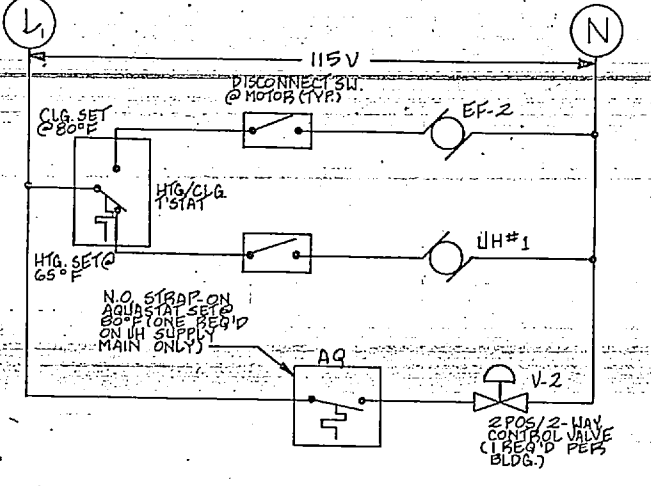
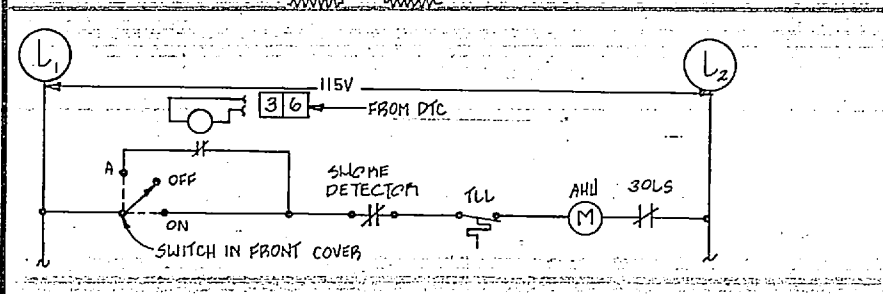
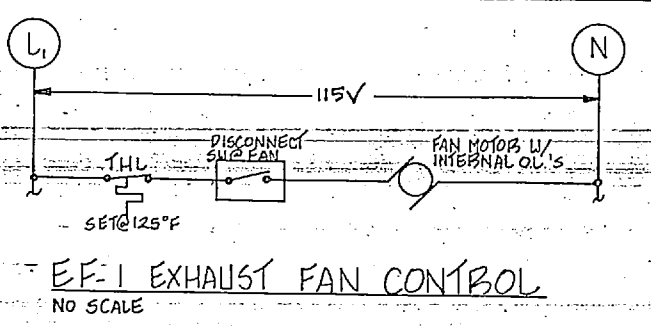
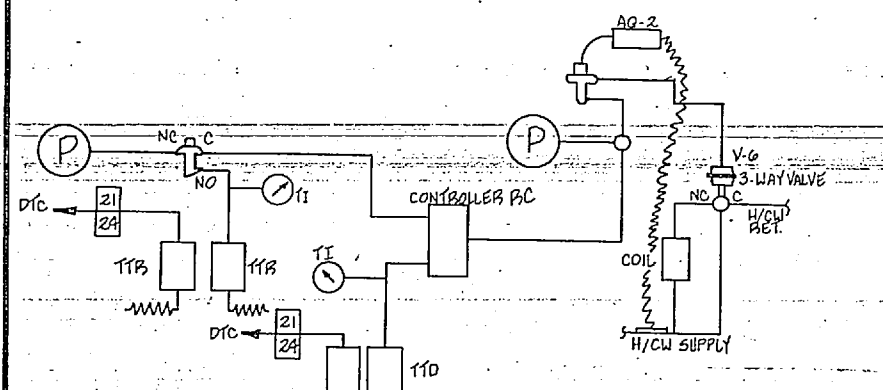


LOWER LEVEL LIFT STATION
SCALE = 1/4" = 1'-0" GRAPHIC SCALE

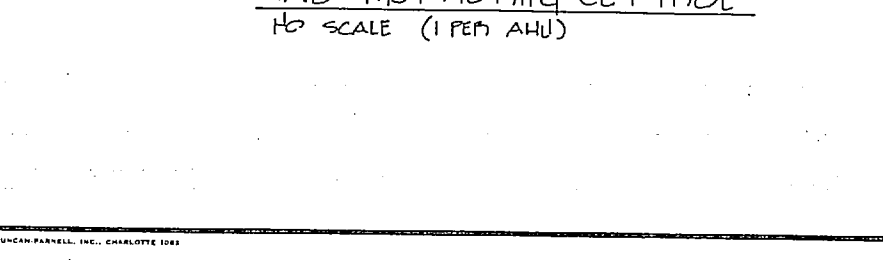


UPPER LEVEL
SCALE = 1/4" = 1'-0"

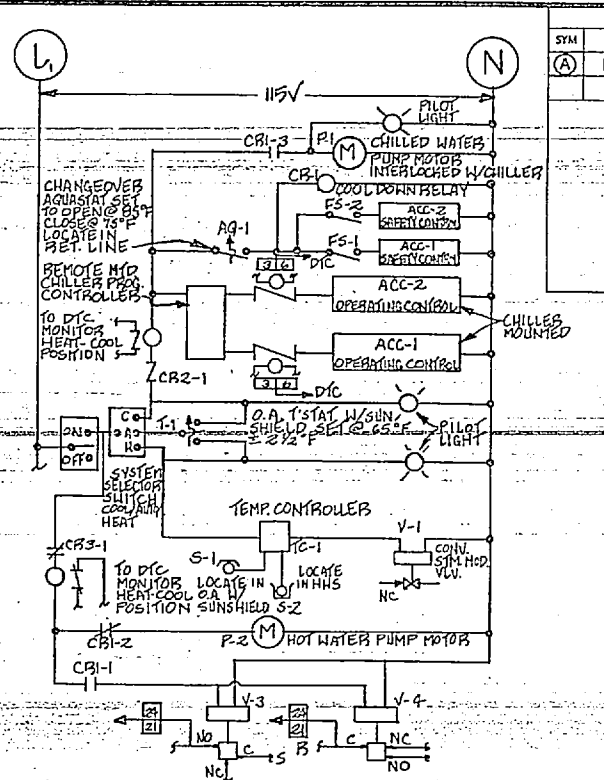
RECORD DRAWING LETTER DATED 4 FEB 1988		M-6
J. N. PEASE ASSOCIATES ARCHITECTS-ENGINEERS-PLANNERS CHARLOTTE NORTH CAROLINA		NAVY FACILITIES ENGINEERING COMMAND DIVISION NOVALEA, VIRGINIA
MARINE CORPS BASE CAMP LEJEUNE, N.C.		UNACCOMPANIED ENLISTED PERSONNEL HOUSING PIPING & CONTROL SCHEMATICS & LIFT STATION
NO. 80091	DATE 28 FEB 88	NAVY DRAWING NO. 4104037
APPROVED	OFFICER IN CHARGE	CONST. CONTR. NO. NG2470-82-B-2244
FOR ETD FOR COMMANDER, NAFLC		SHEET 78 OF 92
		EPD DWG. NO. 204037



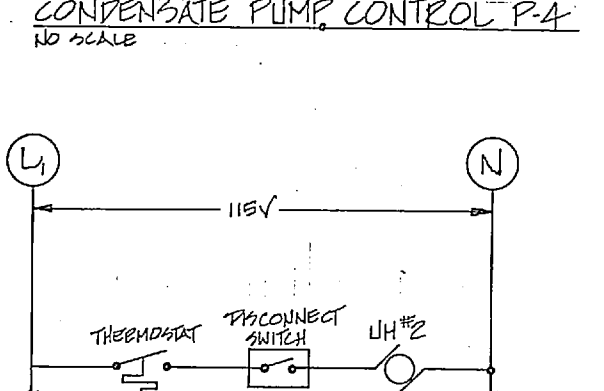
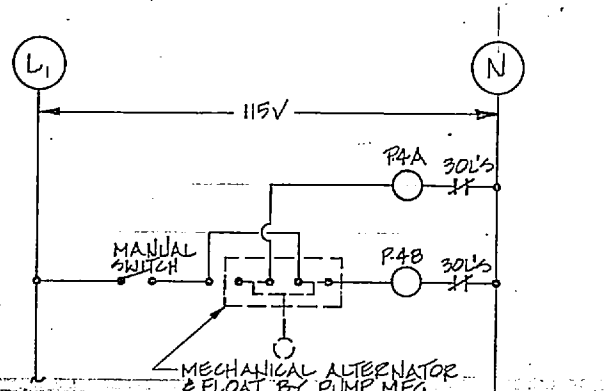
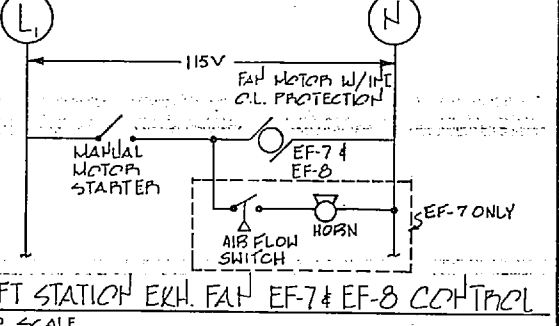
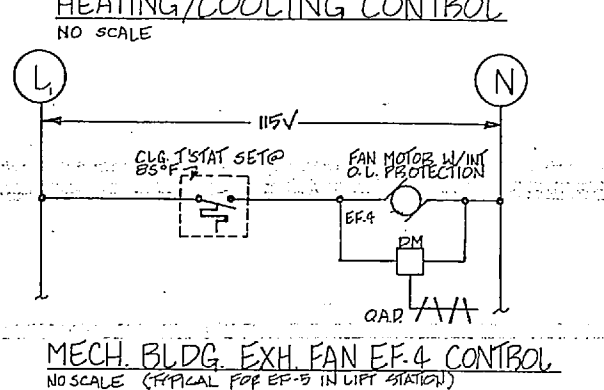
O.A.	HWS
24°F	180°F
60°F	75°F
65°F	STEAM VALV. CLOSED



- ### CONTROL LEGEND
- ← DTC SIGNAL RECEIVED FROM DTC
 - DTC SIGNAL TRANSMITTED TO DTC
 - [A] ALARM CONTACT SIGNAL
 - [B] DIFFERENTIAL PRESSURE SWITCH STATUS SIGNAL
 - [C] START/STOP INTERFACE
 - [D] HUMIDITY INDICATION SIGNAL
 - [E] FUNCTION NUMBER WHICH REQUIRES SIGNAL
 - [F] HI/LO DEMAND SIGNAL SELECTOR
 - [G] MOTOR STARTER
 - [H] SENSOR INSTALLED IN THERMISTEM WEL
 - [I] DAMPER MOTOR
 - [J] OUTSIDE AIR DAMPER
 - [K] RETURN AIR DAMPER
 - [L] SUPPLY AIR DAMPER
 - [M] STEAM FLOW SENSOR
 - [N] METER SIGNAL
 - [O] ENERGY METER
 - [P] THERMOSTAT
 - [Q] POWER (ELECT. OR PNEUM.)
 - [R] TEMP TRANSMITTER DISCH. AIR
 - [S] TEMP TRANSMITTER RETURN AIR
 - [T] MANUAL VOLUME DAMPER
 - [U] HIGH LIMIT T'STAT
 - [V] LOW LIMIT T'STAT
 - [W] DATA TERMINAL CABINET
 - [X] AQUASTAT
 - [Y] TEMP CONTROL VALVE
 - [Z] FLOW SWITCH
 - [AA] STATIC PRESSURE CONTROLLER
 - [AB] TEMP INDICATOR
 - [AC] CHANGEOVER T'STAT

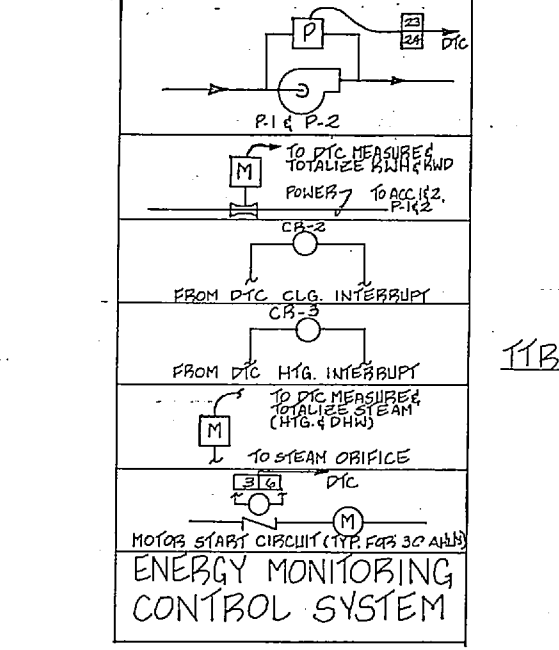


REV	DESCRIPTION	PREP BY	DATE	APPROVED
(A)	REVISED AS-BUILT	GB	02/04/88	GLP



EQUIPMENT ON/OFF	FUNCTION	NO.
	TIMED SCHEDULE OPERATION	1
	DAILY CYCLE	2
	START/STOP	3
	GENERATOR OPERATION	4
	CHILLED WATER RESET	5
	O.A. TEMP CUTOFF	6
	WARM UP/NIGHT CYCLE	7
	ENTHALPY ECONOMIZER	8
	SPACE NIGHT SETBACK	9
	HOT/COLD DECK RESET	10
	COLD DECK TEMP RESET	11
	CHILLED WATER RESET	12
	CONDENSATE WATER RESET	13
	O.A. SCHEDULE RESET	14
	START/STOP OPTIMIZATION	15
	ROLLER PROFILE SELECT	16
	CHILLER PROFILE SELECT	17
	PUMP SELECTION	18
	SUMMER WINTER CHANGEOVER	19
	ANALOG INPUTS	20
	FIRE ALARM FUNCTIONS	21
	PAINT FAN TIME REPORTS	22
	TRUBLE DIAGNOSIS	23
	CRITICAL AREAS ALARMS	24
	SAFETY ALARMS	25
	INTERCOM	26
	METERING	27

NOTE: BLOCKED NUMBERS IN [] INDICATE EMCS FUNCTION NUMBERS AS SHOWN IN TABLE. ALL FUNCTIONS ADJACENT TO [] SHALL BE ANALOG.



COOLING - CONSTANT DISCHARGE	DISCH. TEMP
HEATING - REB. TEMP	AS SCHEDULED
	65°F
	70°F

RECORD DRAWING LETTER-DATED 4 FEB 1988 M-7	
J. N. PEASE ASSOCIATES ARCHITECTS - ENGINEERS - PLANNERS CHARLOTTE NORTH CAROLINA	DEPARTMENT OF THE NAVY NAVAL FACILITIES ENGINEERING COMMAND ATLANTIC DIVISION NORFOLK, VIRGINIA
DES. S.K.L. OR S.K.L. OR S.K.L. OR S.K.L. CHECK DR.W. DATE: 02/04/88 SUBMITTED BY: J.N. Pease DRAWN BY: J.N. Pease REVISION: 1 APPROVED: J.N. Pease	MARINE CORPS BASE, CAMP LEJEUNE N.C. UNACCOMPANIED ENLISTED PERSONNEL HOUSING, HVAC CONTROLS
APPROVED: J.N. Pease OFFICER IN CHARGE DATE: 02/04/88	SIZE: F CODE IDENT. NO: 80091 NAVFAC DRAWING NO: 4104038 CONST. CONTR. NO: N62470-B2-B-2244 SCALE: NONE SHEET 79 OF 92

