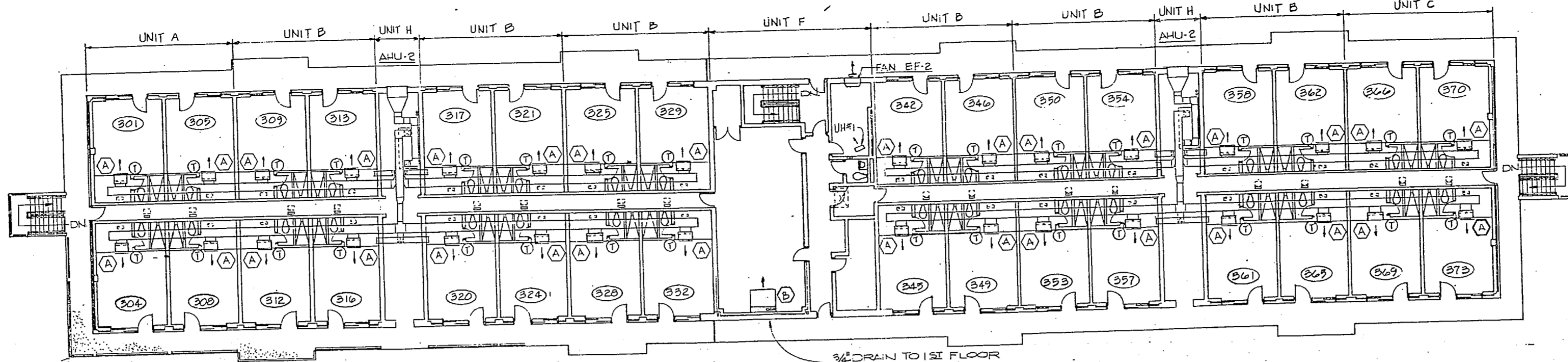
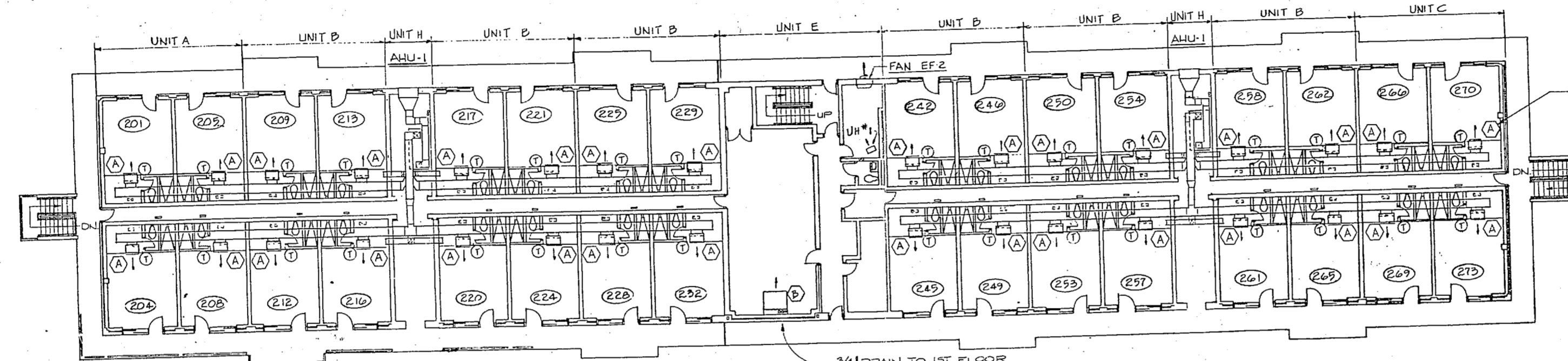


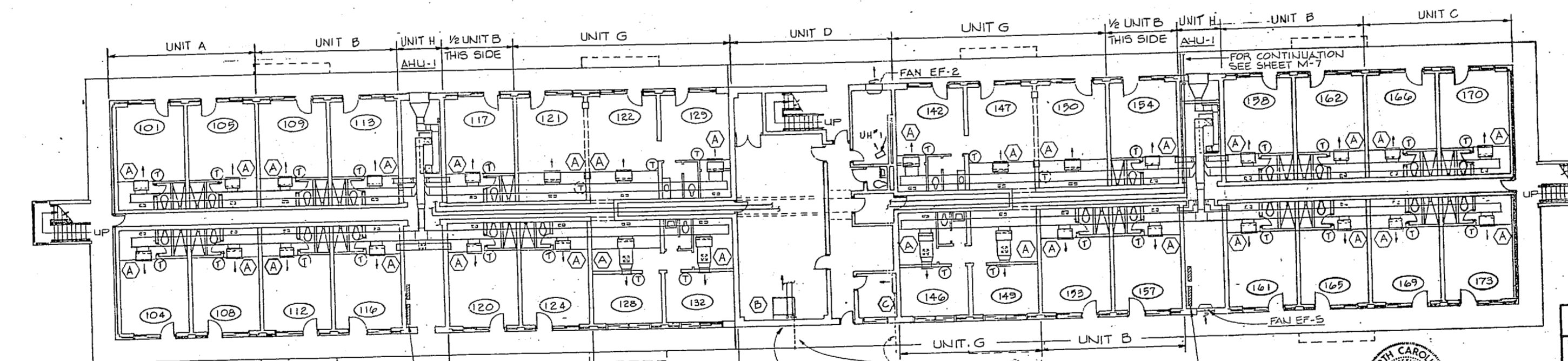
REVISIONS		
NO.	DESCRIPTION	DATE



**THIRD FLOOR PLAN**  
3/32" = 1'-0"



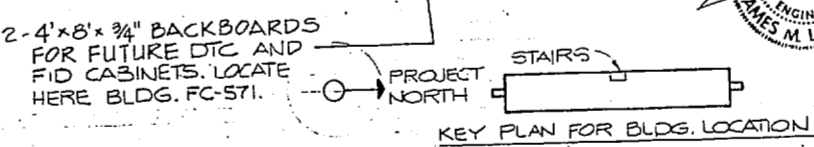
**SECOND FLOOR PLAN**  
3/32" = 1'-0"



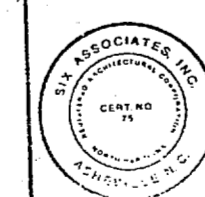
**FIRST FLOOR PLAN**  
3/32" = 1'-0"

2-4'x8'x3/4" BACKBOARDS FOR FUTURE DTC AND FID CABINETS. LOCATE HERE BLDG. FC-573 & FC-574.

- NOTES:**
1. SEE TYPICAL UNIT PLANS A, B, C, D, E & F FOR DUCT AND PIPING ON SHEET M-2
  2. SEE TYPICAL UNIT PLAN G FOR DUCT AND PIPING ON SHEET M-3
  3. SEE TYPICAL UNIT PLAN H FOR DUCT AND PIPING ON SHEETS M-3 & M-6
  4. FOR EQUIPMENT AND SYMBOL SCHEDULES SEE SHEET M-5



GRAPHIC SCALE  
3/32" = 1'-0"



THIS DRAWING SITE ADAPTED FROM DRAWINGS PREPARED BY LANT DIV NAVFACENCOM NORFOLK, VIRGINIA

**M-1**

SIX ASSOCIATES INCORPORATED  
ARCHITECTS ENGINEERS PLANNERS  
ASHEVILLE, NORTH CAROLINA

DEPARTMENT OF THE NAVY  
NAVAL FACILITIES ENGINEERING COMMAND  
ATLANTIC DIVISION  
NORFOLK, VA.

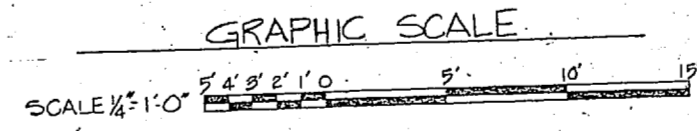
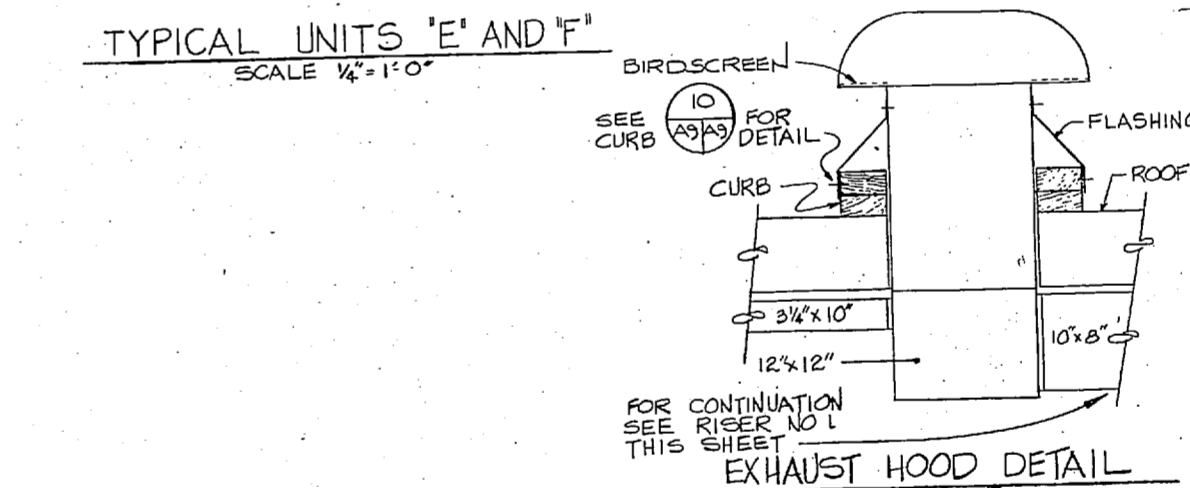
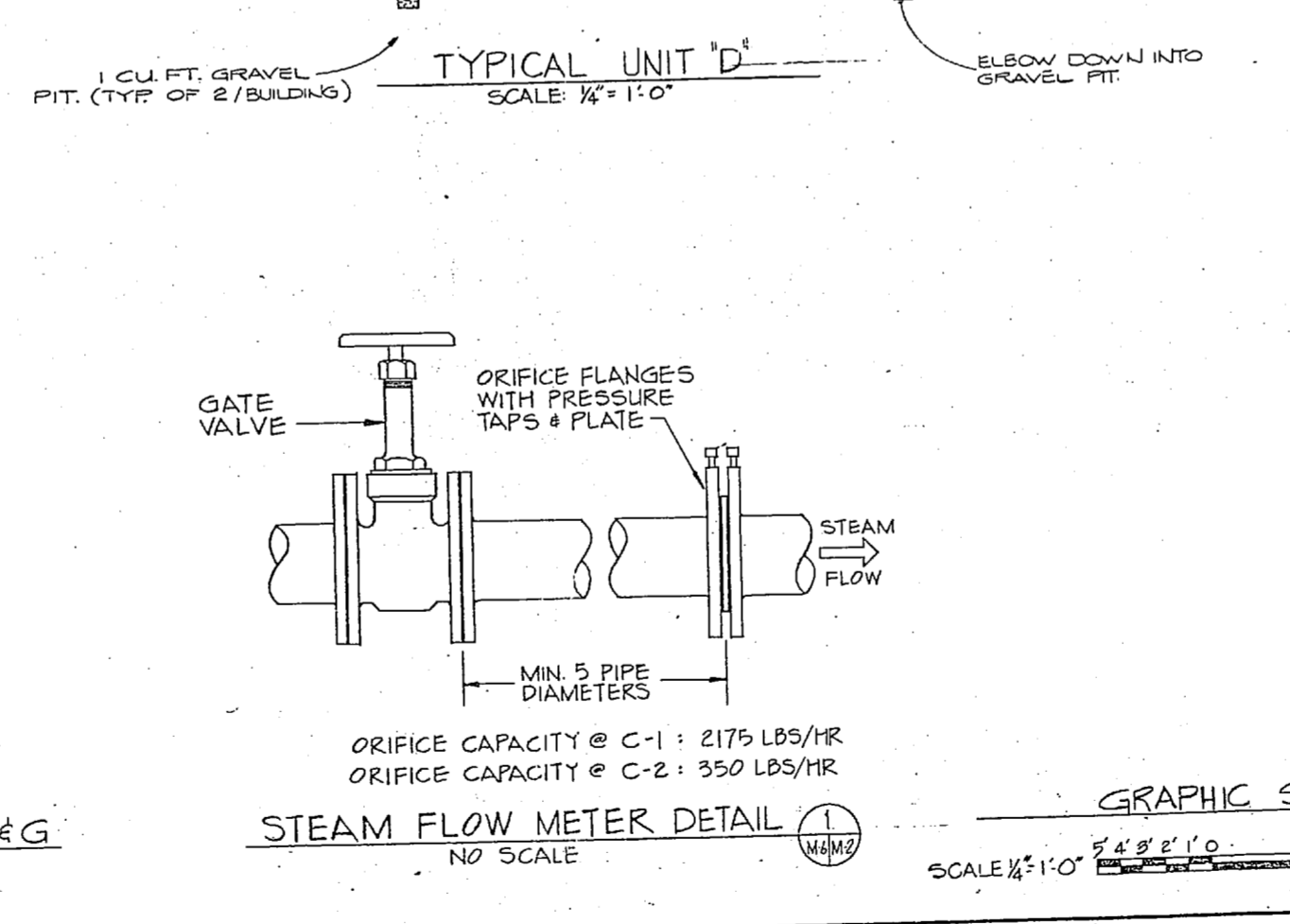
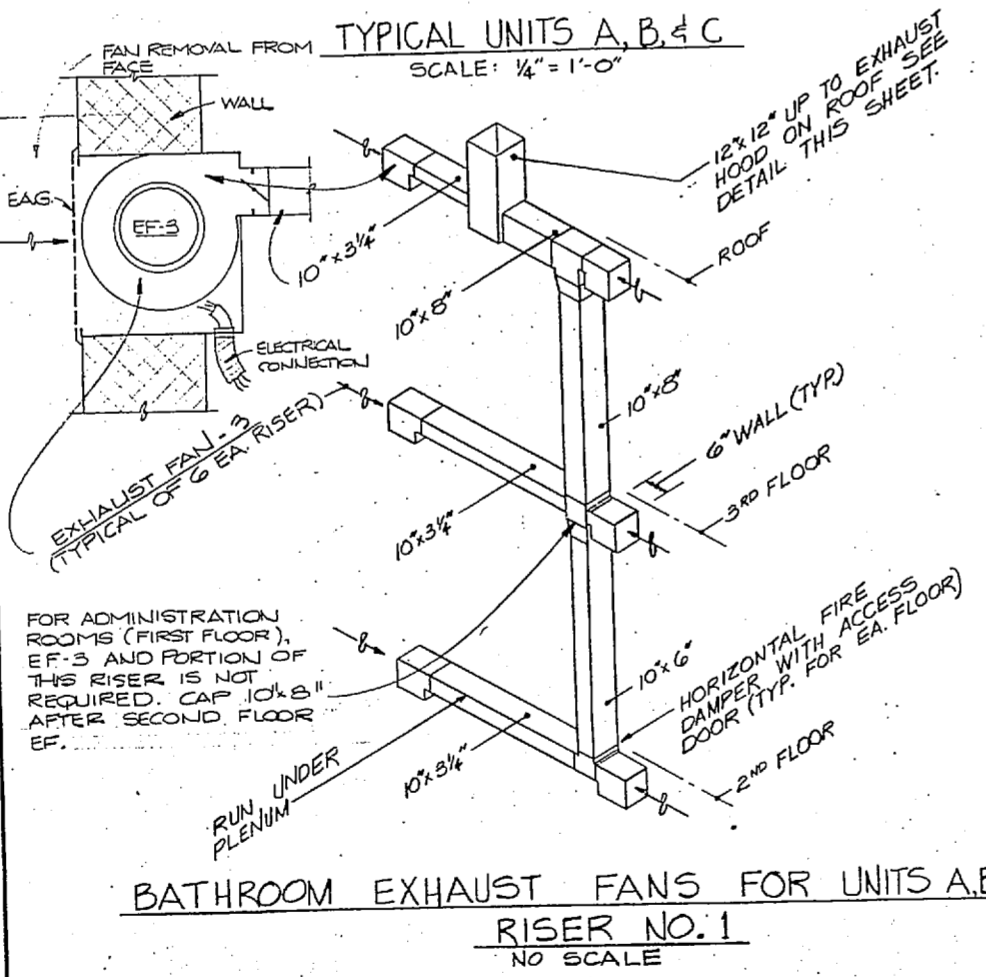
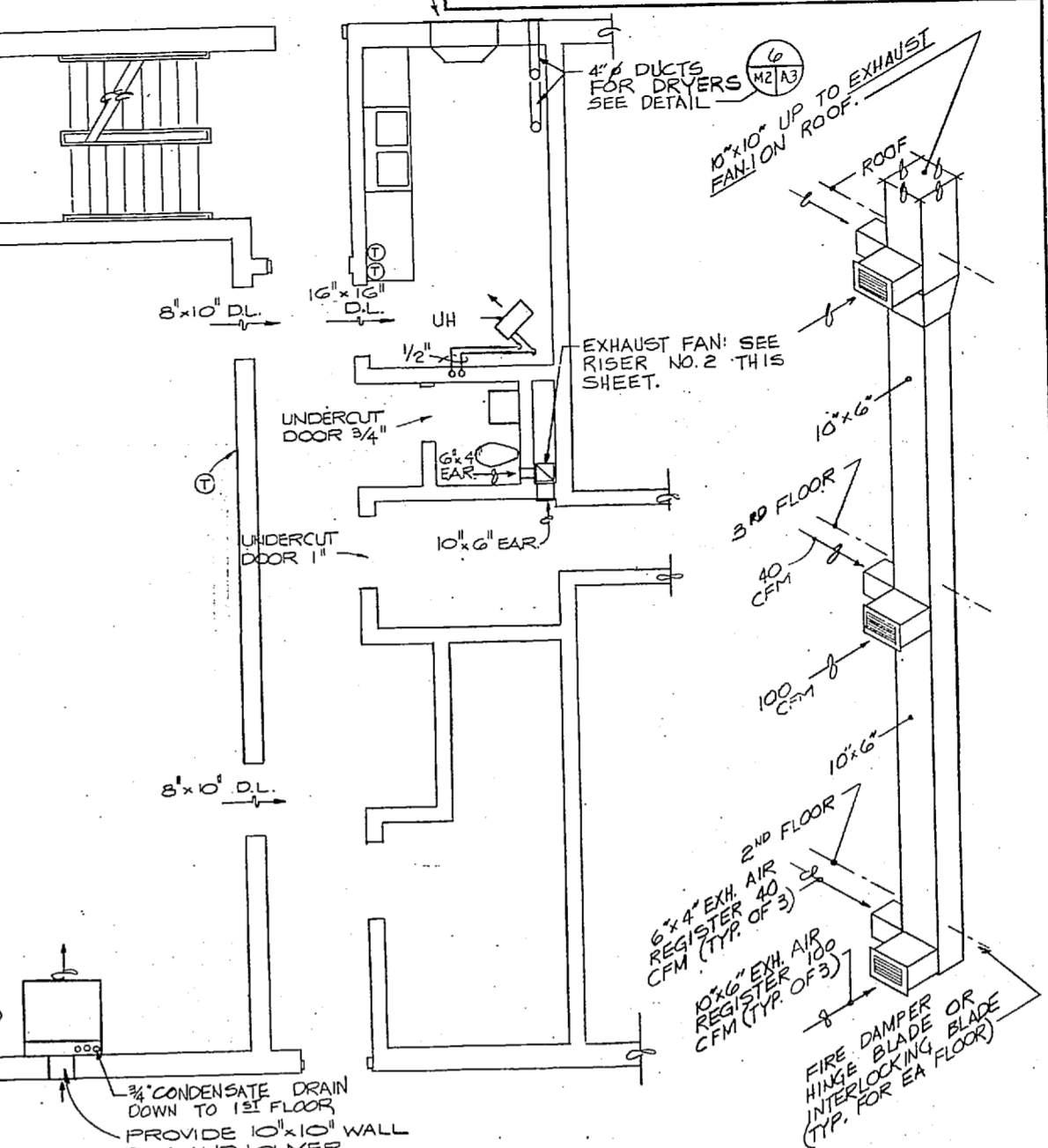
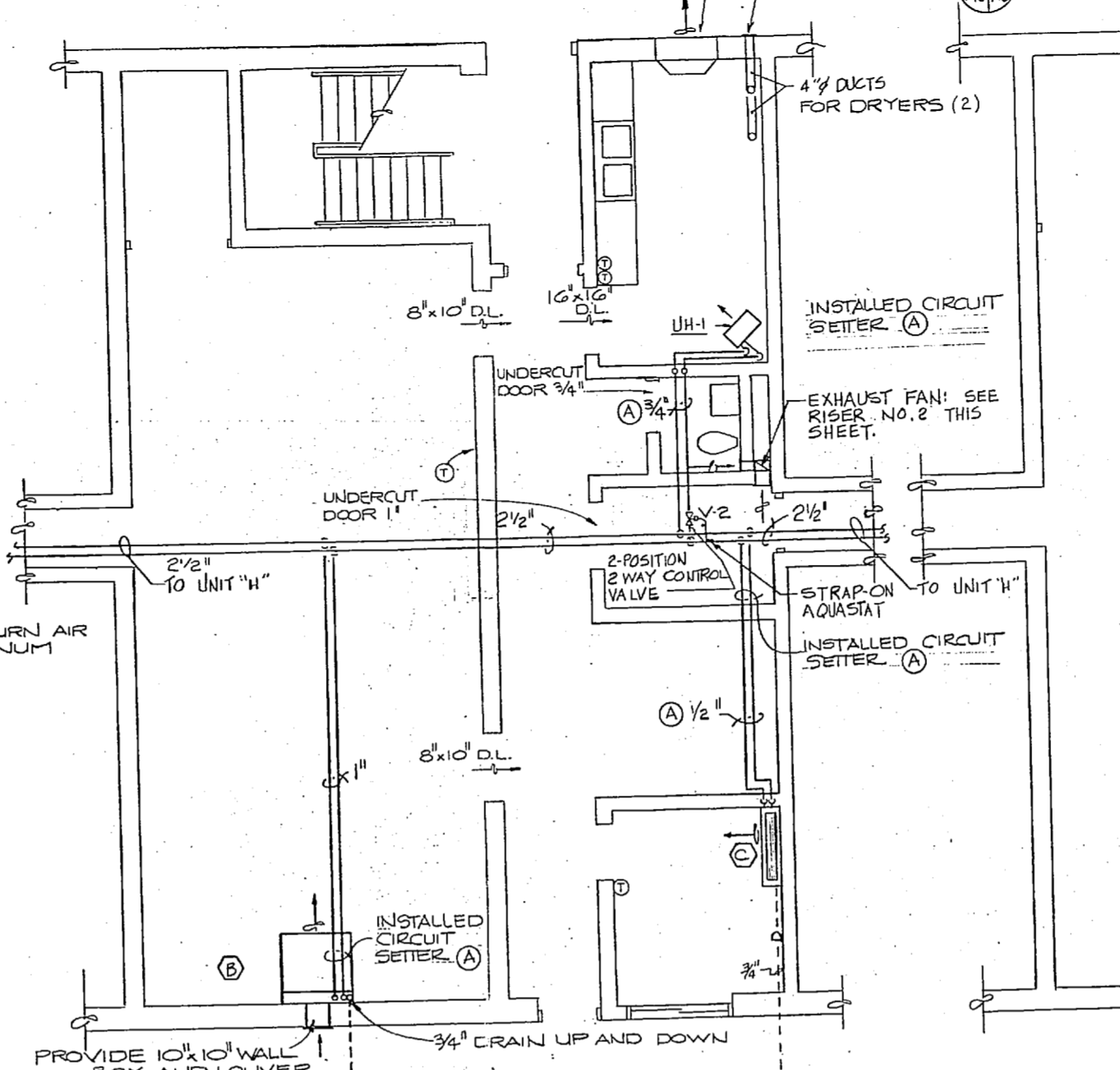
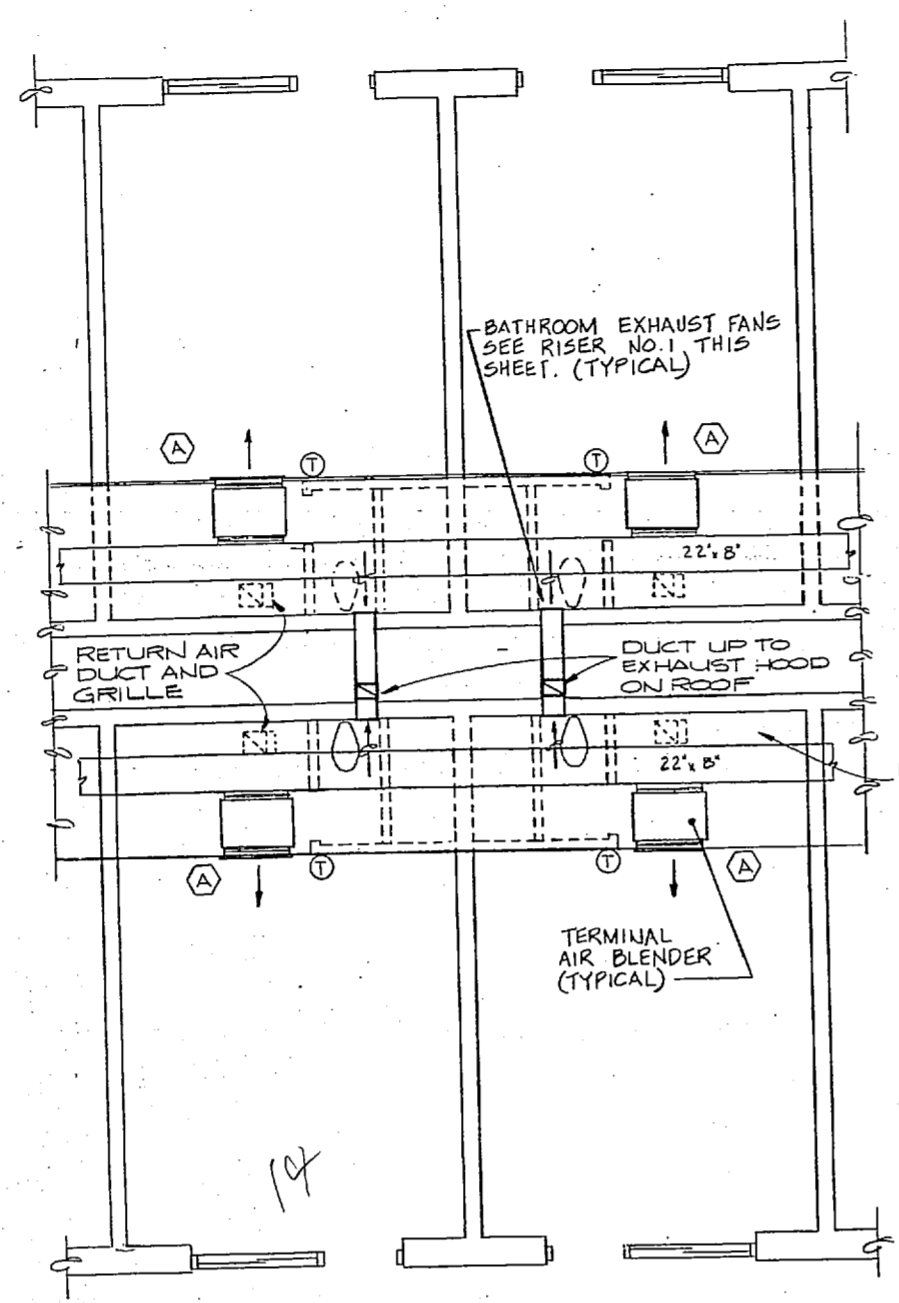
NAVAL STATION  
MARINE CORPS BASE  
CAMP LEJEUNE, N.C.

UNACCOMPANIED ENLISTED PERSONNEL HOUSING  
FC-571, FC-573, FC-574  
HVAC FLOOR PLAN

NO. 80091  
DATE 07 SEP 1974  
SCALE AS NOTED  
SHEET NO. 43 OF 62  
SHEET NO. 199792

14x22

REVISIONS		DATE	BY	APPROVED
①	REVISED AS-BUILT	10/14/83	PMB	



THIS DRAWING SITE ADAPTED FROM DRAWINGS PREPARED BY LANT DIV NAVFACENGCOM NORFOLK, VIRGINIA

RECORD DRAWINGS LETTER DATED 4/18/83

M-2

SIX ASSOCIATES INCORPORATED ARCHITECTS ENGINEERS PLANNERS ASHEVILLE NORTH CAROLINA

DESIGN DRAWING CREDITED FROM NAVFAC ENG. DIVISION

SUBMITTED BY DATE

FIRM MEMBER DATE

OFFICE IN CHARGE DATE

APPROVED DATE

SCALE AS NOTED

DATE REVISIONS

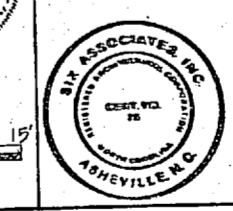
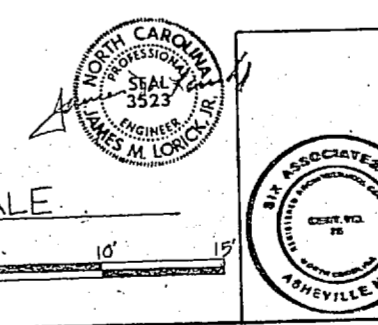
4089793

80091

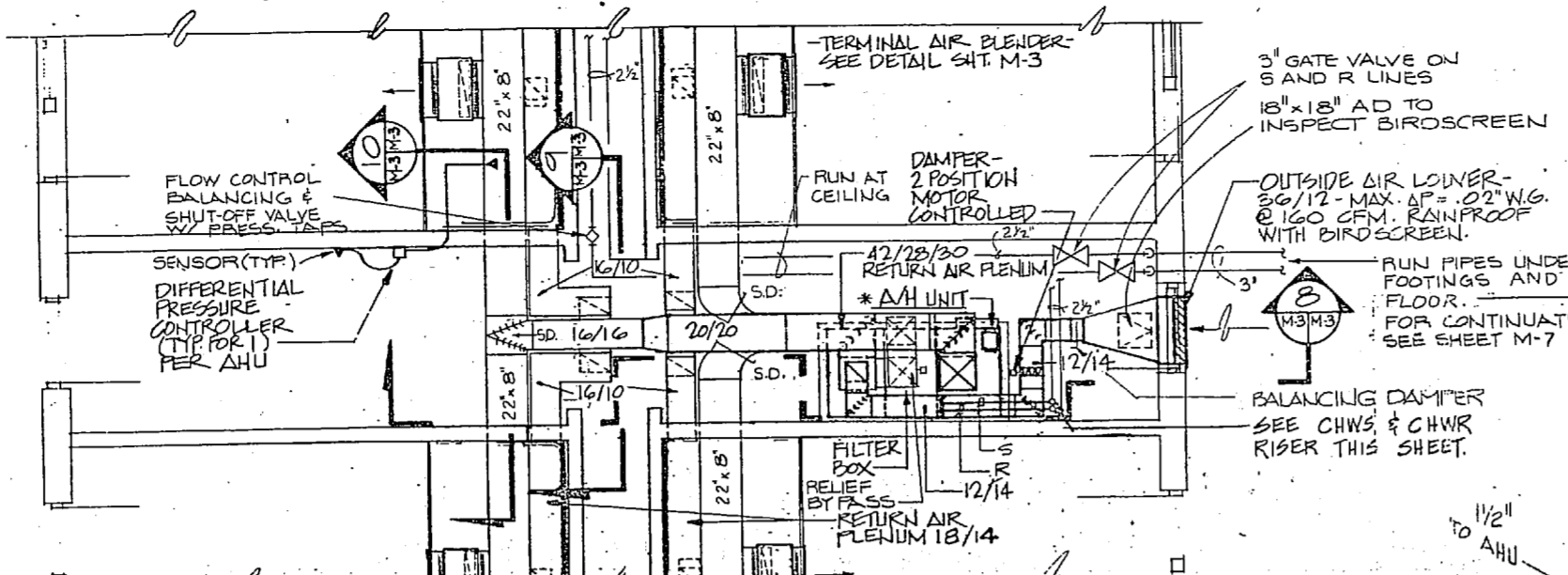
05-82-2309

24 62

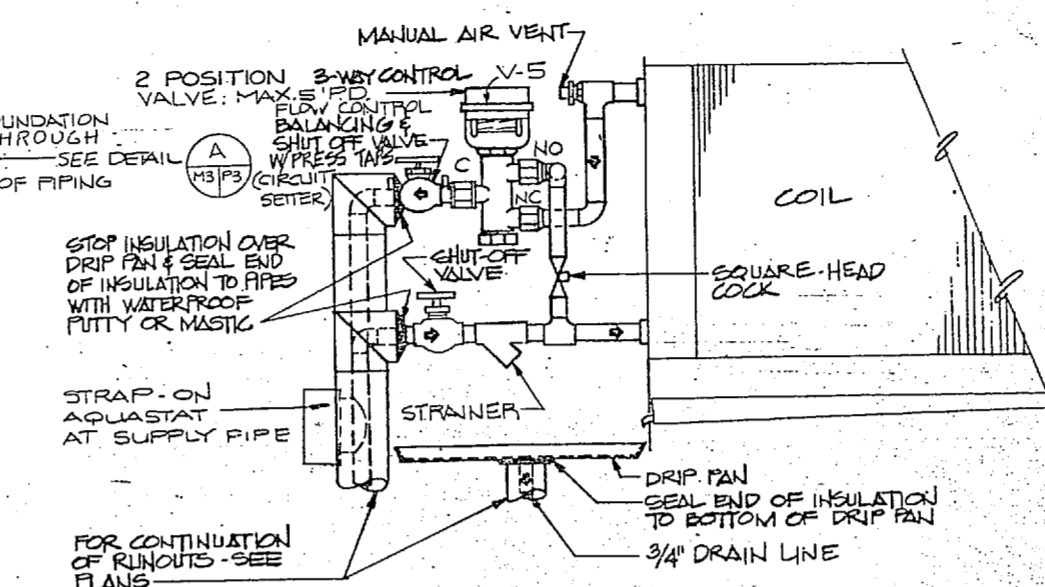
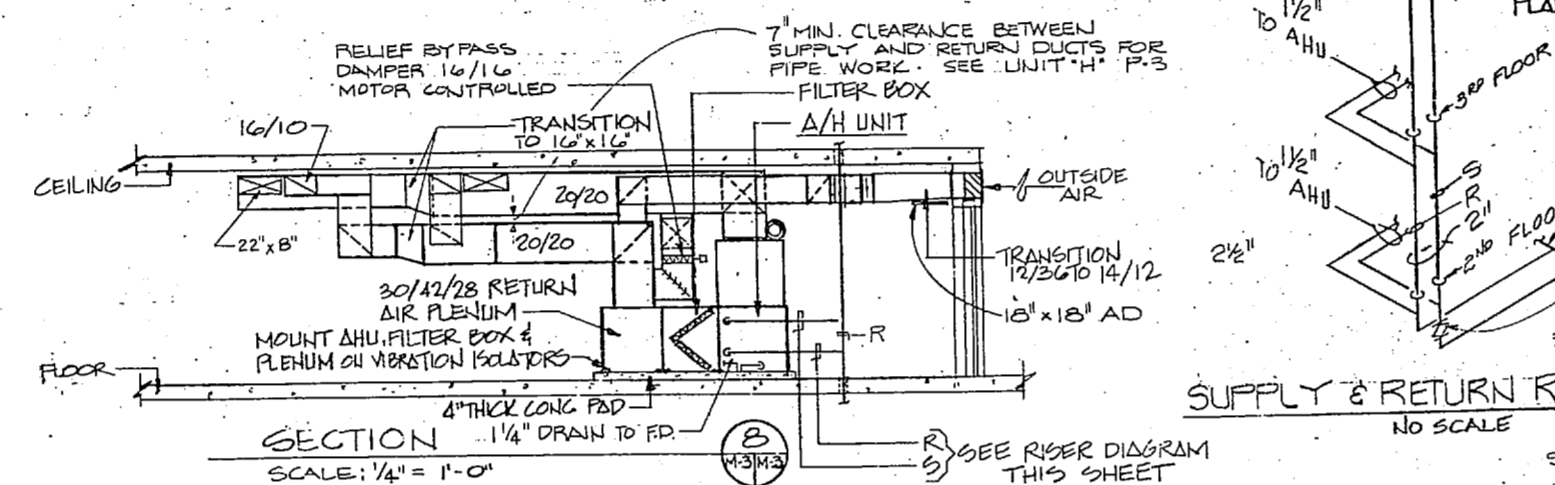
199793



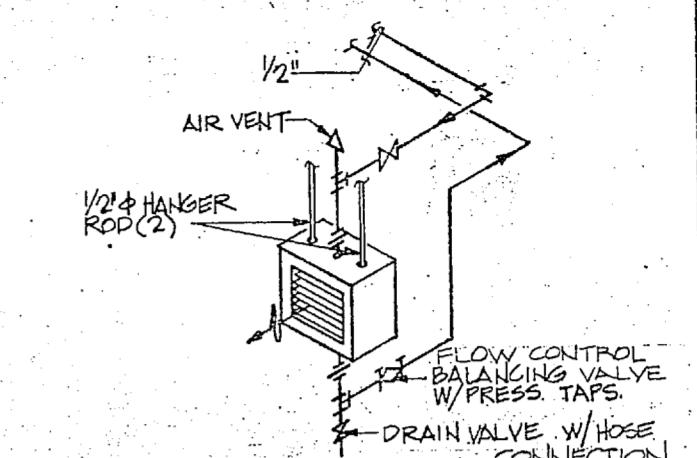




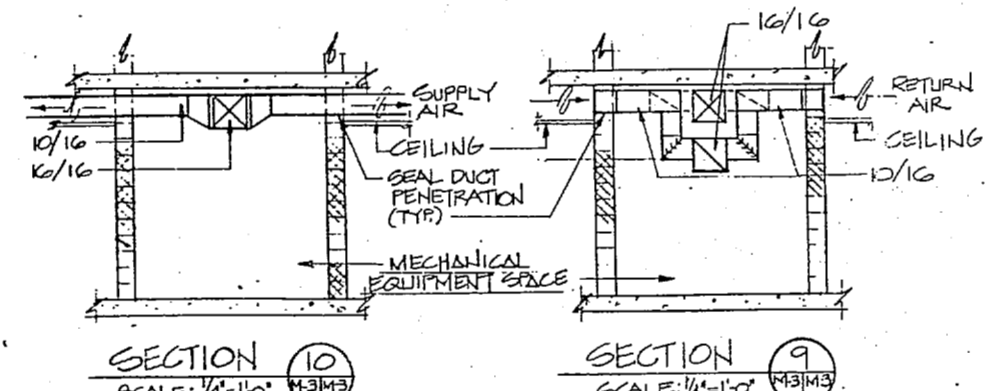
PART FLOOR PLAN-MECHANICAL EQUIPMENT SPACE- UNIT "H"  
SCALE: 1/4" = 1'-0"



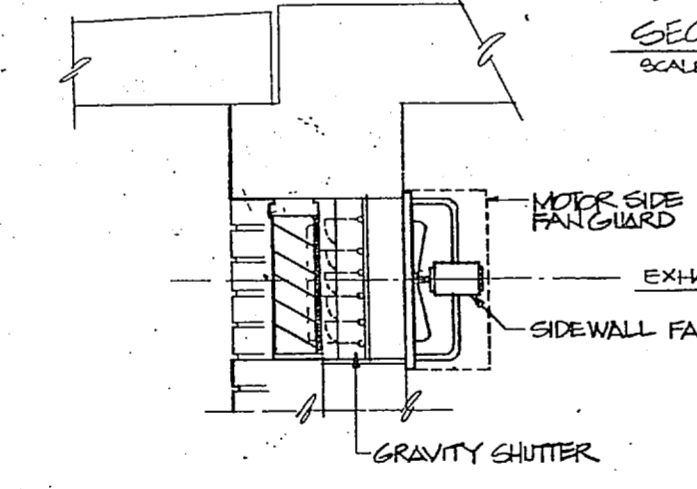
FAN COIL UNIT PIPING DETAIL  
NOT TO SCALE



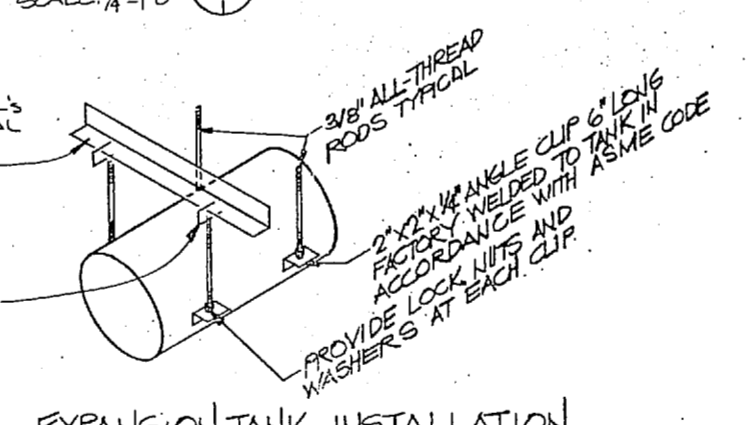
UNIT HEATER DETAIL  
NO SCALE



SECTION 10 SCALE: 1/4" = 1'-0"  
SECTION 9 SCALE: 1/4" = 1'-0"



1 SIDEWALL EXHAUST FAN DETAIL  
SCALE: NO SCALE



EXPANSION TANK INSTALLATION  
NO SCALE

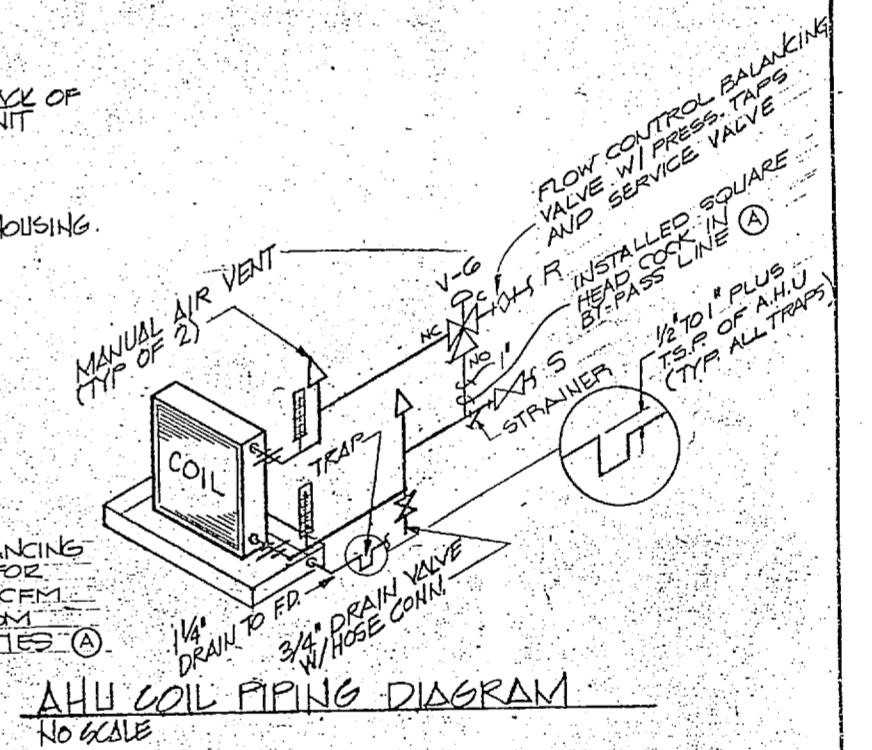
TERMINAL AIR BLENDER DETAIL  
NO SCALE

Room No.	CFM	
105, 106, 109, 112, 113, 116, 117, 120	110	
121, 124, 126, 128, 129, 133, 142, 146		
147, 149, 150, 153, 154, 157, 159, 161		
162, 165, 166, 169, 205, 208, 209, 212		
213, 216, 217, 220, 221, 224, 225, 228		
229, 232, 242, 245, 246, 249, 250, 253	120	
254, 257, 258, 261, 262, 265, 266, 269		
308, 312, 316, 320, 321, 323, 324, 345		
349, 353, 357, 361, 365, 369		
204, 205, 309, 315, 317, 321, 325, 329		130
343, 347, 350, 354, 358, 362, 366		
270, 273, 304		
201, 370, 373		140
101, 104, 170, 173, 301		

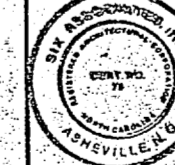
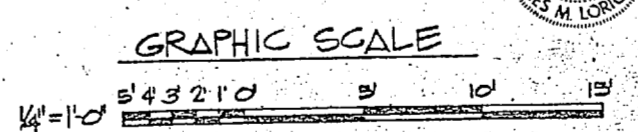
PRIMARY AIR TO TAB UNITS  
SEE BALANCING REPORT FOR ACTUAL CFM PER ROOM CAPACITIES (A)

SPEED	CFM	"S.P.
LOW	250	.05

1. PROVIDE AN ON-OFF SWITCH ADJACENT TO ROOM STAT.
2. SET UNITS ON LOW SPEED.



AHU COIL PIPING DIAGRAM  
NO SCALE



THIS DRAWING SITE ADAPTED FROM DRAWINGS PREPARED BY LANT DIV NAVFACENCOM NORFOLK, VIRGINIA

REC'D LANT DIV  
LETTER DATED M-3

SIX ASSOCIATES INCORPORATED  
architects engineers planners  
ASHEVILLE NORTH CAROLINA

DEPARTMENT OF THE NAVY  
NAVAL FACILITIES ENGINEERING COMMAND  
ATLANTIC DIVISION  
NAVAL STATION NORFOLK, VA.

MARINE CORPS BASE CAMP LEJEUNE, N.C.

UNACCOMPANIED ENLISTED PERSONNEL HOUSING

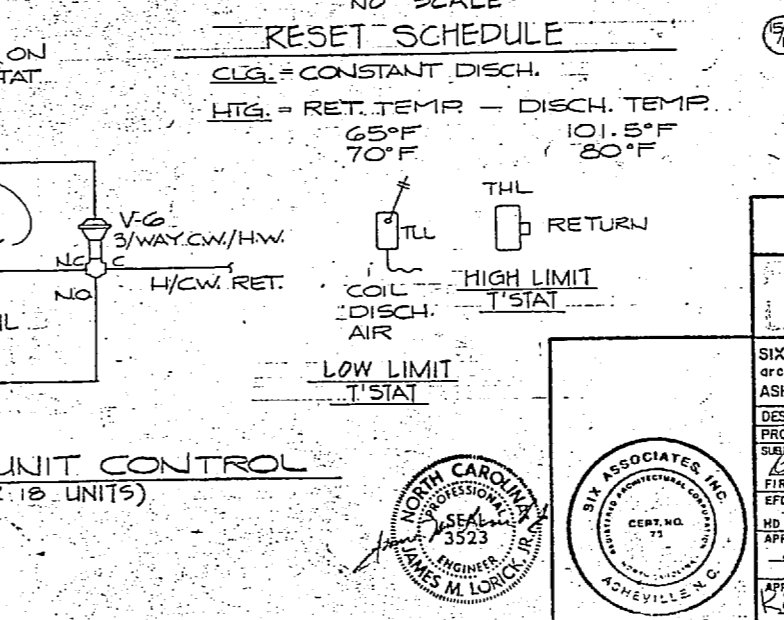
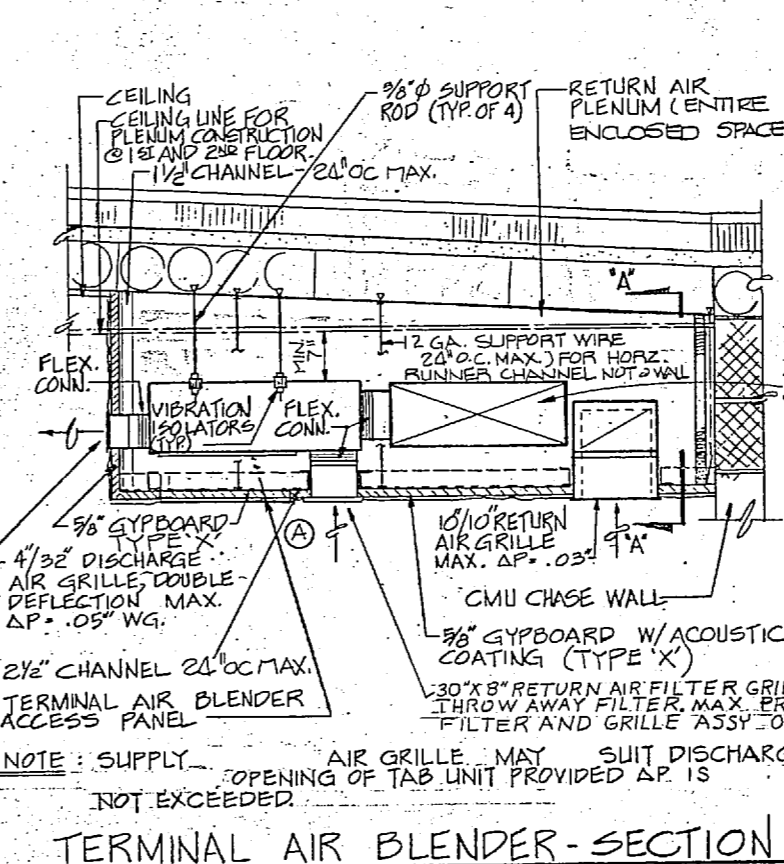
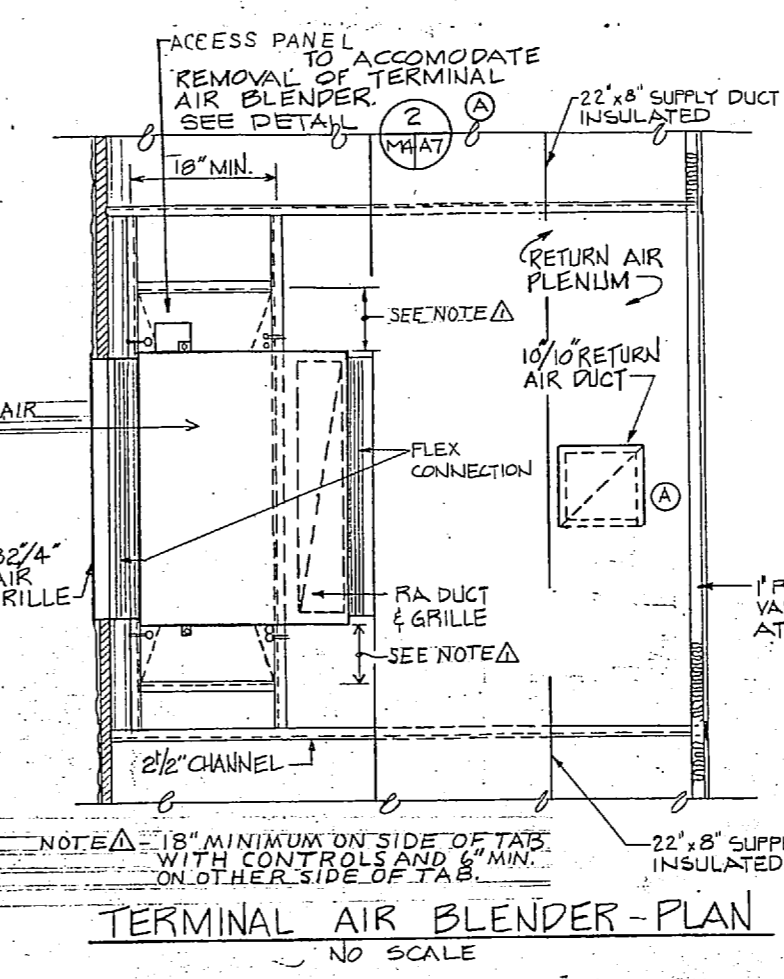
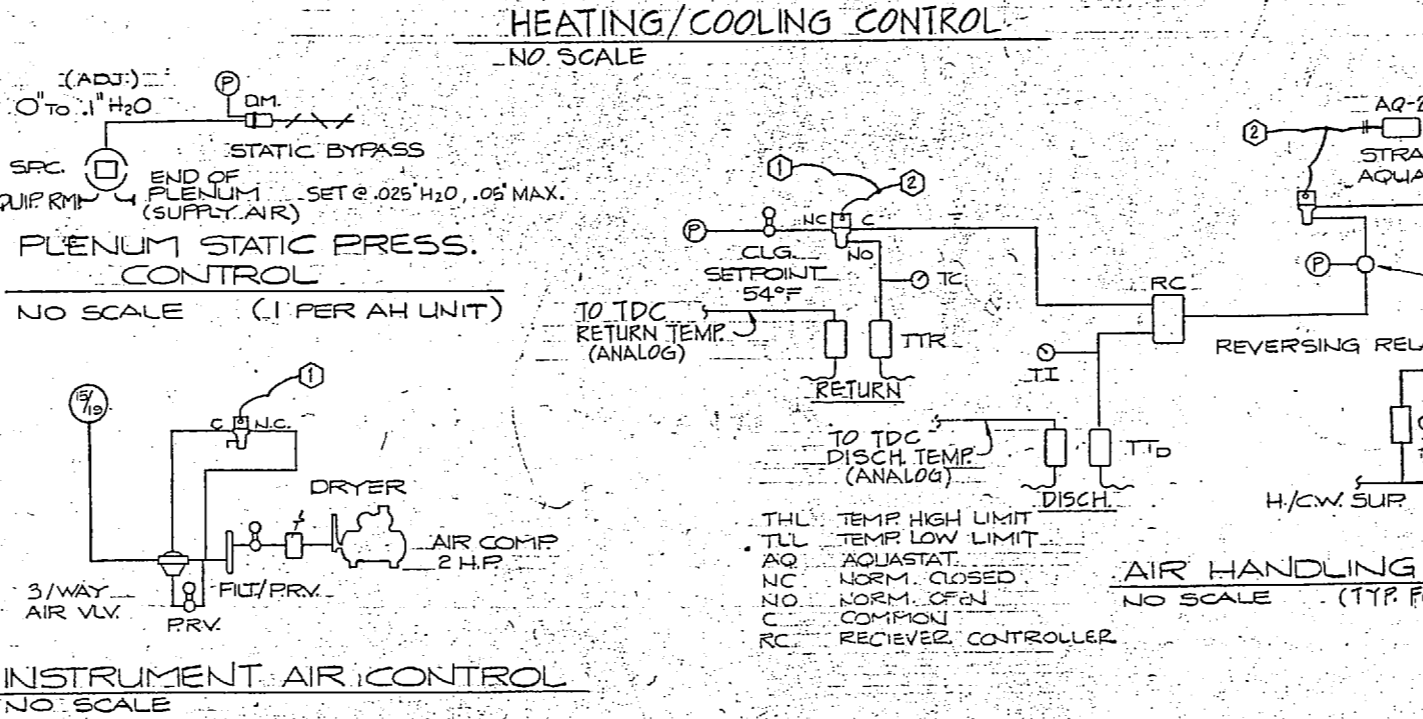
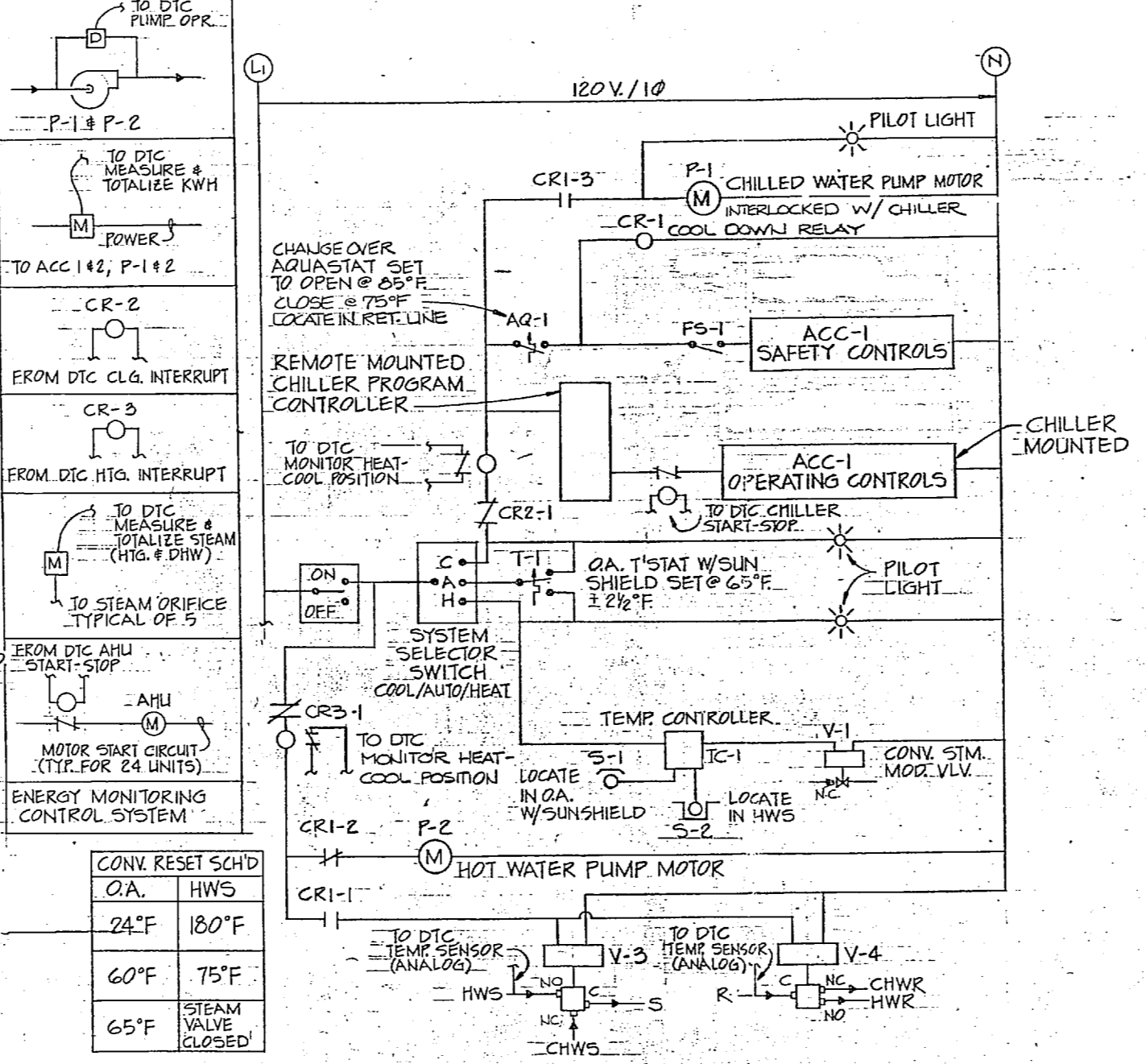
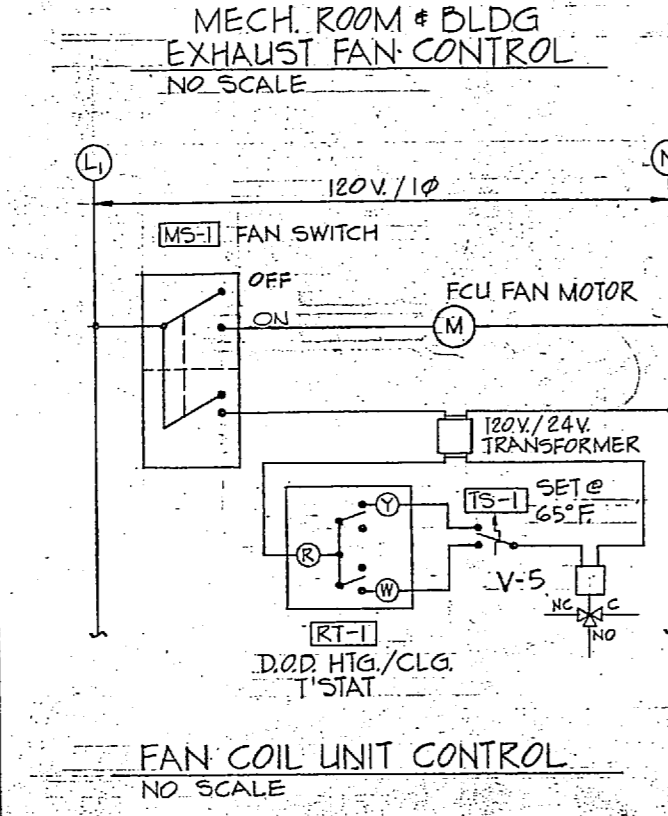
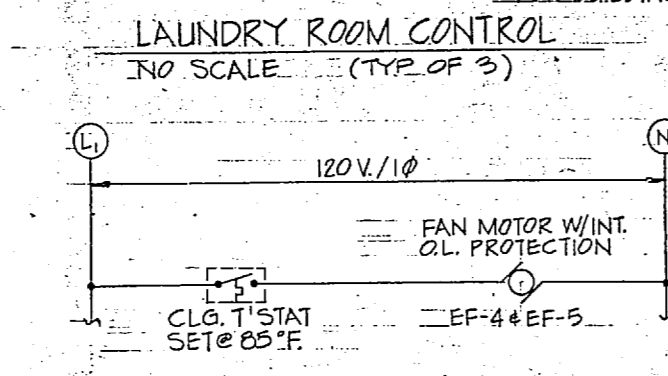
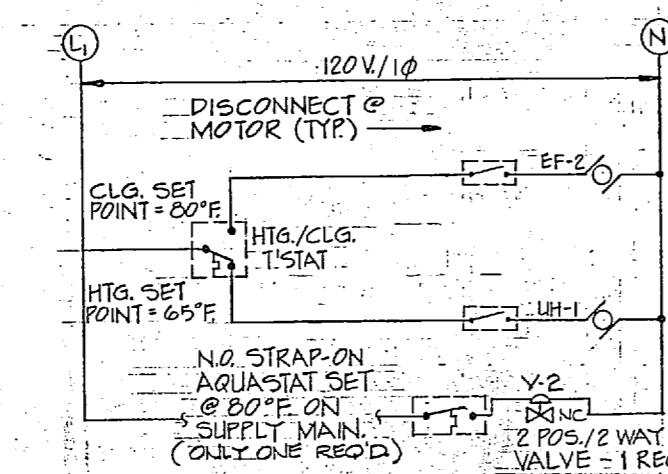
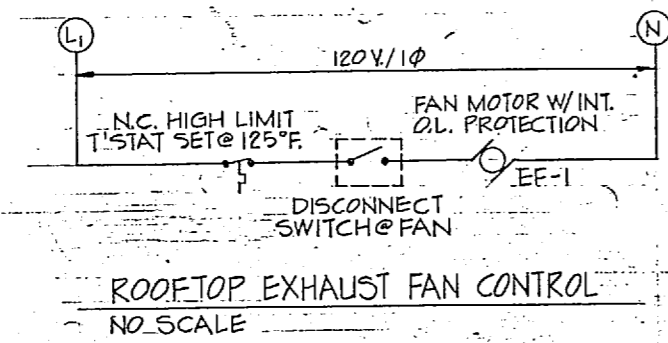
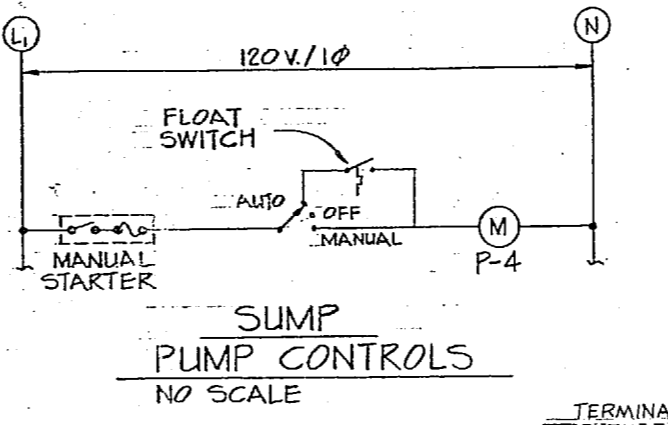
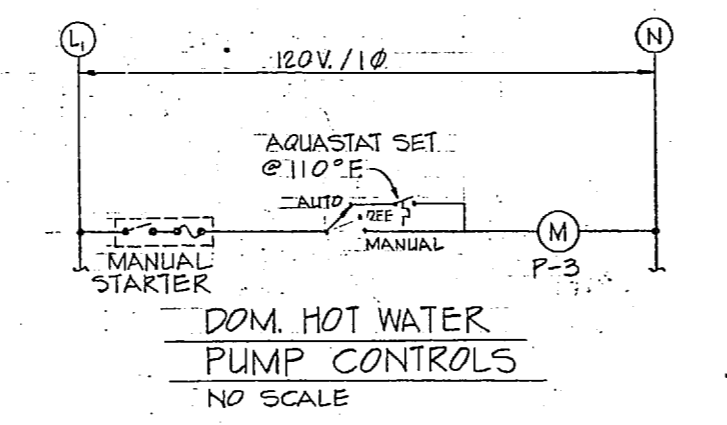
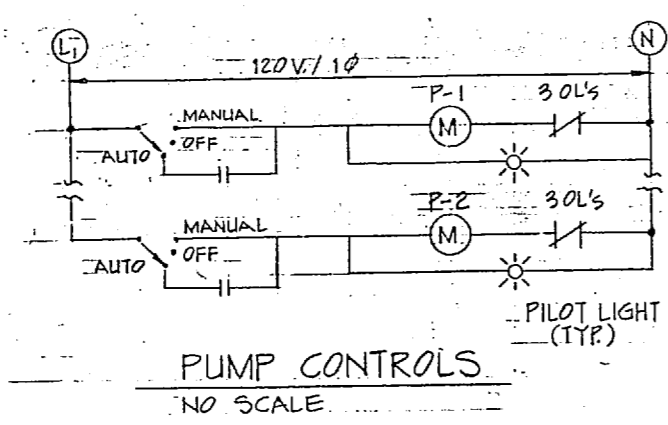
TYPICAL HVAC DETAILS

DATE: 8/23/64  
DRAWN BY: R. L. WILLIAMS  
CHECKED BY: J. S. HARRIS

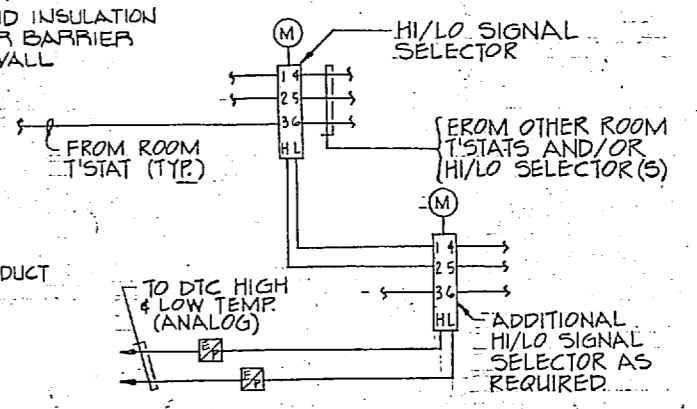
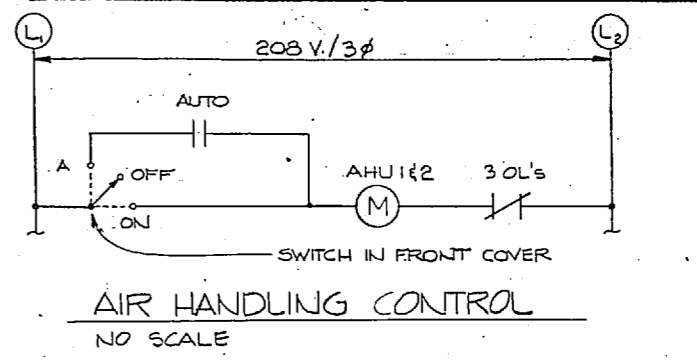
NO. 80091

SCALE: AS NOTED



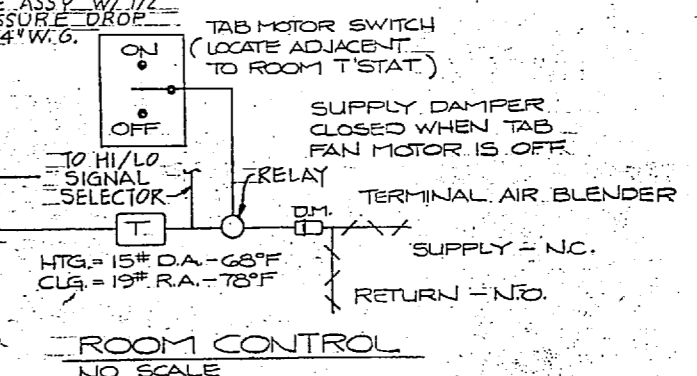
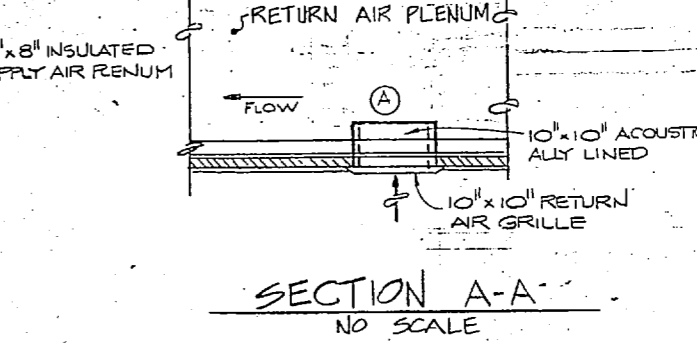


REVISIONS	
NO.	DESCRIPTION
1	REVISED AS BUILT



**SYMBOLS**

- DIFFERENTIAL PRESSURE SWITCH
- ⊞ METER
- ⊙ MOTOR
- ⊕ DATA TERMINAL CABINET
- ⊖ POWER (ELEC. OR PNEUMATIC)
- ⊞ TEMPERATURE INDICATOR
- ⊞ TEMPERATURE TRANSMITTER RETURN
- ⊞ TEMPERATURE TRANSMITTER DISCHARGE



THIS DRAWING SITE ADAPTED FROM DRAWINGS PREPARED BY LANT DIV NAVFACENGCOM NORFOLK, VIRGINIA

REVISIONS

NO.	DATE	DESCRIPTION
1	4/78	LETTER DATED

**M = 4**

SIX ASSOCIATES INCORPORATED		DEPARTMENT OF THE NAVY	
architects engineers planners		NAVAL FACILITIES ENGINEERING COMMAND	
ASHEVILLE NORTH CAROLINA		NORFOLK, VA.	
DESIGN FOR BIDDING		MARINE CORPS BASE	
DRAWING NO. 8-2309		CAMP LEJEUNE, N.C.	
SUBMITTED BY		UNACCOMPANIED ENLISTED PERSONNEL HOUSING	
FIRM MEMBER		HVAC CONTROLS AND DETAILS	
OFFICE IN CHARGE		DATE	
APPROVED		DATE	
SCALE AS NOTED		DATE	





AIR COOLED CHILLER SCHEDULE	
UNIT DESIGNATION	ACC-1
BUILDING(S) SERVED	3
MIN. TOTAL CAPACITY, TONS	115
ENT. WATER TEMP. °F	50.7
LVG. WATER TEMP. °F	48
WATER FLOW, G.P.M.	323
AMBIENT AIR TEMP. DB °F	80
MAX. WATER PRESSURE DROP, FT. WG.	16
MAX. UNIT K.W.	190
VOLTS/PHASE/HERTZ	460/3/60

1. CONDENSER CAPACITY WILL BE SIZED TO PROVIDE AN EFFICIENCY NOT TO EXCEED 1.1 KW/TON INCLUDING FANS.  
2. 4 STEPS MIN. PER UNIT. 3. NEMA STARTER SIZE 5

DESIGN CONDITIONS		
	OUTSIDE	INSIDE
SUMMER	90°F DB/79°F WB	70°F DB/50.3° RH
WINTER	23°F DB	68°F DB

HEAT EXCHANGER SCHEDULE		
UNIT DESIGNATION	C-1	C-2
TYPE SERVICE	HEATING	EA. BLDG
BLDG. SERVED	3	1 EA. BLDG
TEMP. IN °F	159.6	55
TEMP. OUT °F	180	110
STEAM PRESS. PSIG	15	15
STEAM FLOW, LB./HR.	1621	350
WATER FLOW, G.P.M.	150	12
EXCHANGER TYPE	SHELL/TUBE	TANK
MAX. TUBE VEL., FT./SEC.	6	5
MAX. PRESS. DP, FT. WG.	5	5
MINI. SCALE FACTOR	.0025	.001

1. MIN. TUBE LENGTH 50% TANK LENGTH.

PUMP SCHEDULE				
UNIT DESIGNATION	P-1	P-2	P-3	P-4
TYPE SERVICE	CHW	HW	DOM. HW	SUMP
BLDG. SERVED	3	3	1 EA. MECH.	30
CAPACITY, G.P.M.	323	150	10	30
TOTAL HEAD, FT. WG.	96	28	16	15
R.P.M.	1750	1150	1750	1750
MAX. MOTOR H.P.	15	2	1/4	1/2
VOLTS/PHASE/HERTZ	460/3/60	460/3/60	120/1/60	120/1/60
PUMP TYPE	RAYS MTR.	BASE MTR.	IN LINE	SUB.
NOTES	1,3	2,4	4	4

1. MIN. EFFICIENCY - 72%  
2. MIN. EFFICIENCY - 70%  
3. NEMA STARTER SIZE 2  
4. NEMA STARTER SIZE 1

COND. PUMP SCHED	
UNIT DESIGNATION	CP-1
BLDG. SERVED	1 EA. 3
MIN. CAP. G.P.M.	3
MIN. DISC. PRESS. PSI	60
MAX. MOTOR H.P.	2
R.P.M.	3500
VOLTS/PHASE/HERTZ	208/3/60
NOTES	1,2,3,5

1. DUPLEX TYPE W/C.I. RECEIVER.  
2. MECH. ALTERNATOR & MAGNETIC STARTER.  
3. REC. CAP. 14 GAL.  
4. REC. CAP. 23 GAL.  
5. NEMA STARTER SIZE 1

UNIT HEATER SCHEDULE	
UNIT DESIGNATION	LH-1
AREA SERVED	LAUNDRY
MIN. CAP. BTUH	4568
ENT. AIR TEMP. °F	65
ENT. WATER TEMP. °F	180
WATER TEMP. DROP °F	32
MAX. MOTOR H.P.	1/25
HEATER TYPE	HOR. DISCH.
VOLTS/PHASE/HERTZ	120/1/60
WATER FLOW, G.P.M.	0.5
NOTES	1

1. DIRECTIONAL DISCHARGE LOUVER.

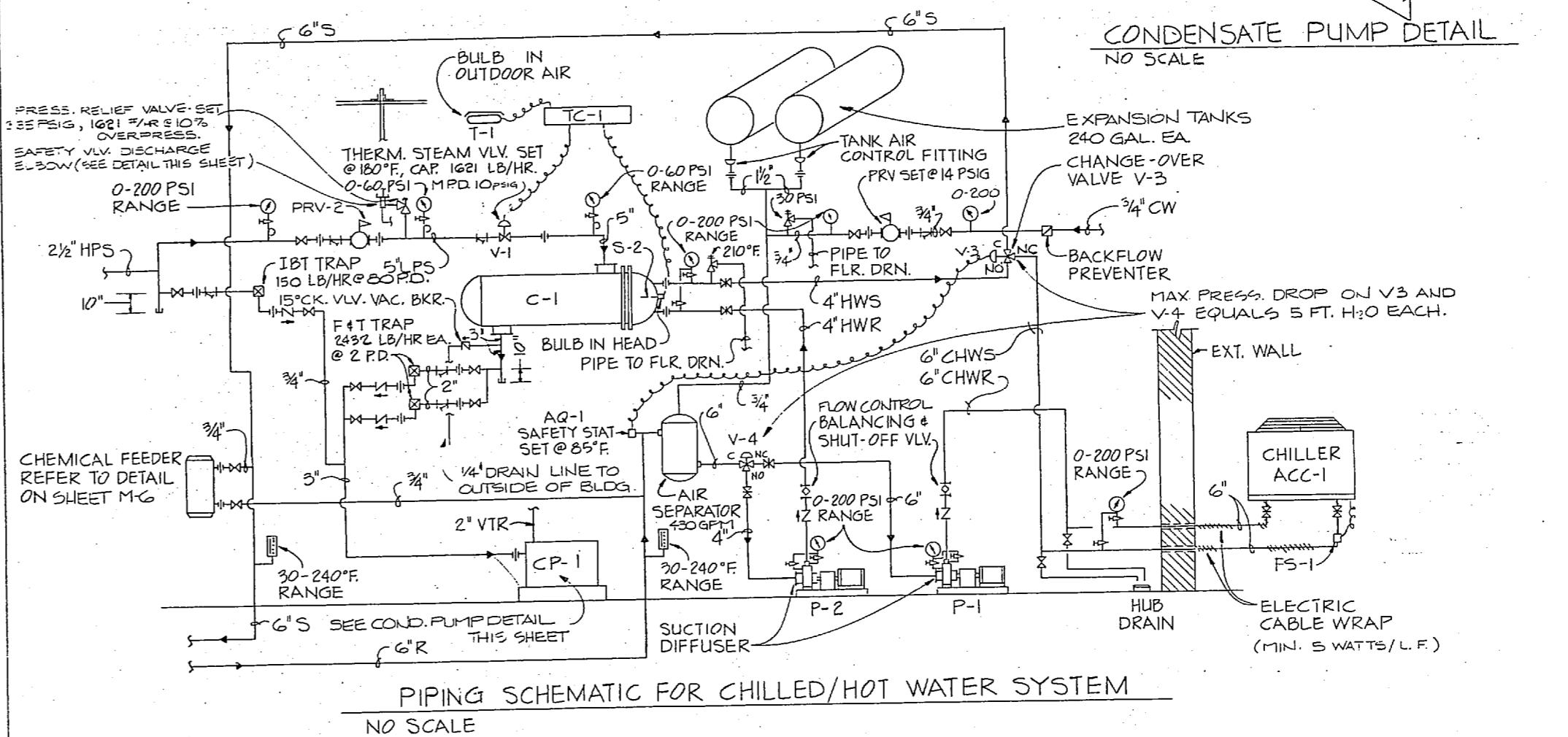
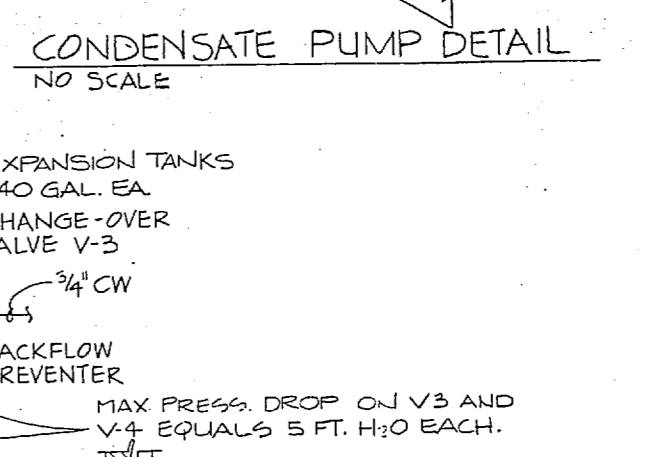
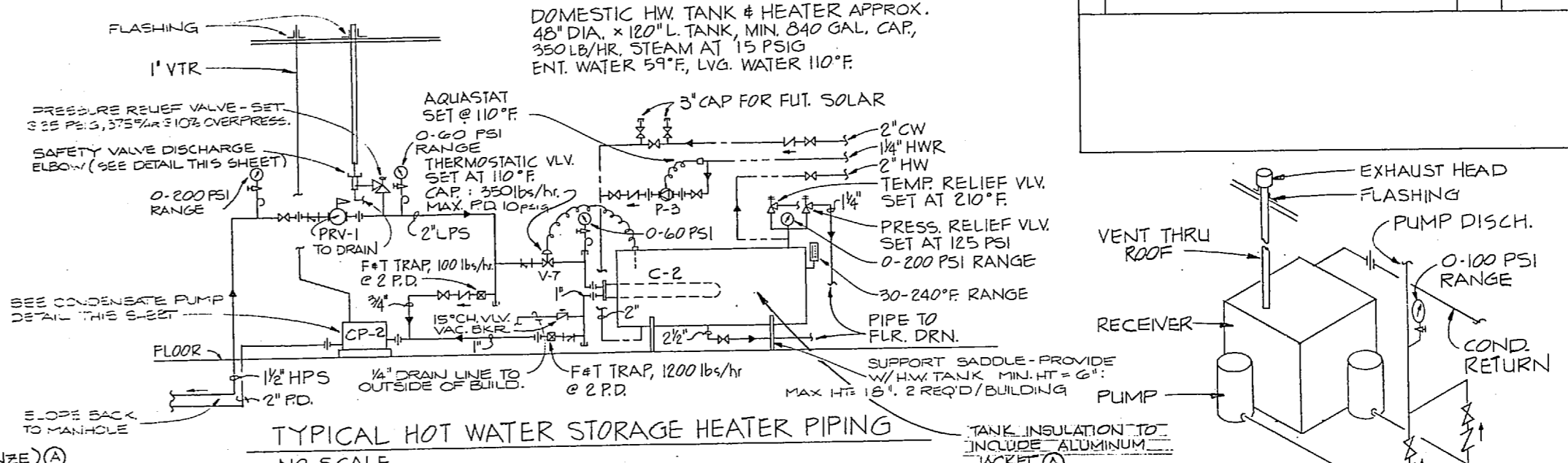
EXHAUST FAN SCHEDULE					
UNIT DESIGNATION	EF-1	EF-2	EF-3	EF-4	EF-5
AREA SERVED	JAN. CL.	LAUNDRY	TOILETS	MECH. BLD.	MECH. RM.
AIR FLOW, C.F.M.	420	500	65	385	320
TOTAL STATIC PRESS., IN. WG.	.125	.125	.10	.125	.125
MAX. MOTOR H.P.	1/20	1/20	1/60	1/16	1/20
VOLTS/PHASE/HERTZ	120/1/60	120/1/60	120/1/60	120/1/60	120/1/60
FAN TYPE	CENTRL.	PROP.	CENTRL.	CENTRL.	PROP.
LOCATION	ROOF	WALL	ROOF	WALL	WALL
NOTES	1,3	2,5	1	1,3,4	1,6

1. PROVIDE GRAVITY BACKDRAFT DAMPER & DISCONNECT SWITCH.  
2. PROVIDE ALUMINUM WALL GRILLE, FAN GUARD, GRAVITY BACKDRAFT DAMPER & DISCONNECT SWITCH.  
3. PROVIDE BIRDSCREEN.  
4. PROVIDE ALUMINUM, SELF-FLASHING CURB.  
5. MAX. SOUND LEVEL TO BE 4 SONES.  
6. MECH. RMs W/ WATER HEATERS ONLY. (3 TOTAL)

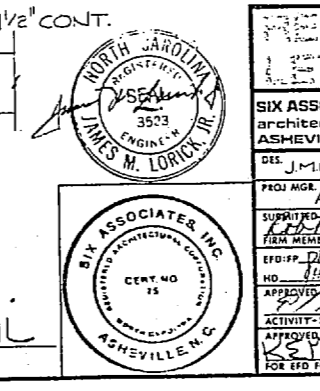
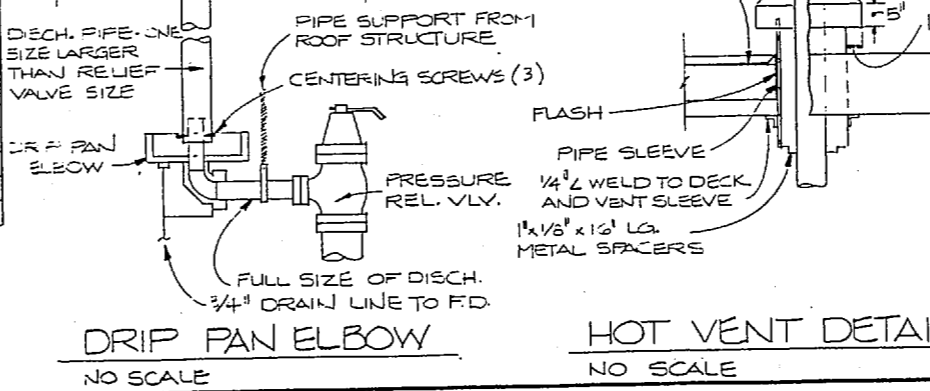
SYMBOL SCHEDULE	
CHWS	CHILLED WATER SUPPLY
CHWR	CHILLED WATER RETURN
HWS	HOT WATER SUPPLY
HWR	HOT WATER RETURN
S	DUAL TEMP. SUPPLY
R	DUAL TEMP. RETURN
D	DRAIN
HPS	HIGH PRESS. SUPPLY (STEAM @ 150 PSI.G.)
HPR	HIGH PRESS. RETURN (CONDENSATE)
LPS	LOW PRESS. SUPPLY (STEAM @ 25 PSI.G.)
LPR	LOW PRESS. RETURN (CONDENSATE)
CW	COLD WATER SERVICE
MAY	MANUAL AIR VENT
MVD	MANUAL VOLUME
AP/AD	ACCESS PANEL/DOOR
F4T	FLOAT & THERMOSTATIC
I.B.T.	INVERTED BUCKET TRAP
PR.V.	PRESS. RED. VALVE (BRONZE)
P.D.	PUMP DISCHARGE
E.F.	EXHAUST FAN
A.H.U.	AIR HANDLING UNIT
L.H.	UNIT HEATER
S.A.R.	SUPPLY AIR REGISTER
G.V.	GATE VALVE
G.V.	GLOBE VALVE
B.V.	BUTTERFLY VALVE
C.V.	CHECK VALVE
S.	STRAINER
S.T.	STEAM TRAP
U.	UNION
2-WAY	2-WAY CONTROL VLV.
3-WAY	3-WAY CONTROL VLV.
R.T.	ROOM THERMOSTAT
E.C.R.	ECCENTRIC REDUCER
P.R.V.	PRESS. RED. VALVE
C.V.	CONTROL VLV. ASSY
T.M.	THERMOMETER
G.C.	PRESS. GAGE & COCK
P.R.V.	TEMP./PRESS. RELIEF VALVE
C.W.	DOM. COLD WATER
H.W.	DOM. HOT WATER
R.C.	DOM. H.W. RECIRC.
AQ-1/2	AQUASTAT
F.S-1	FLOW SWITCH, ACC-1
F.S-2	FLOW SWITCH, ACC-2
S-1	OUTSIDE AIR SENSOR
S-2	H.W. CONVERTER SENSOR
T-1	OUTDOOR THERMOSTAT
TC-1	TEMP. CONTROLLER
CR1	RELAY
T.S-1	CHANGE-OVER T'STAT
V-1	THERMOSTATIC STM. VLV.
V-2	CONTROL VLV.
V-3	CONTROL VLV.
V-4	CONTROL VLV.
V-5/6	CONTROL VLV.
DL	DOOR LOUVER
RT-1	ROOM T'STAT
HPR	HOT WATER RECIRC.

FAN COIL SCHEDULE				
UNIT DESIGNATION	(1)	(2)	(3)	(4)
NOTES	1,3	2,3		
NOMINAL CFM	600	200		
COIL SELECTION, CFM	600	200		
MAX. CHIL. WATER FLOW, G.P.M.	3	1,4		
MIN. COIL CAP. SENSIBLE BTUH	6510	1350		
MIN. COIL CAP. TOTAL BTUH	14,800	1600		
ENT. AIR TEMP. °F DB	81.4	76		
ENT. AIR TEMP. °F WB	71	65		
ENT. WATER TEMP. °F	42	42		
MIN. COIL CAP. TOTAL BTUH	13,000	1500		
ENT. AIR TEMP. °F DB	62.4	68		
ENT. WATER TEMP. °F	180	180		
CFM OUTSIDE AIR	70	0		
PIPING SIZE - SUPPLY & RETURN	3/4"	3/4"		
MAX. MOTOR WATTAGE	135	95		
MAX. HOT WATER FLOW, G.P.M.	1.3	1.2		

1. HORIZ. CEILING TYPE W/ OUTSIDE AIR INTAKE.  
2. VERTICAL TYPE W/ OUT. OUTSIDE AIR.  
3. MAX. PRESS. DROP - 3 FT. - 1.0 EA.



AIR HANDLING UNIT SCHEDULE																											
UNIT NO.	FAN DATA				COOLING COIL DATA						HEATING COIL DATA					REMARKS											
	TOTAL	MIN. O.A.	MIN. O.V.	MIN. T.S.P.	TOTAL	TOTAL	MAX.	ENT. AIR	LVG. AIR	COIL	COIL	TOTAL	MAX.	EAT.	LAT.												
1	1750	160	1500	.75	2	1.5	1750	3066	4266	500	79.4	67	54	52	16	42	4	1	6	1750	70230	500	64	1005	7.2	180	1,2,3,4
2	1855	160	1600	.75	1.2	1.5	1655	24978	55247	500	79.5	67	53	52	17	42	4	1	6	1855	76273	500	64	1015	7.6	180	1,2,3,4



RECORD DRAWING  
LETTER DATED

**M-5**

SIX ASSOCIATES INCORPORATED  
ARCHITECTS ENGINEERS PLANNERS  
ASHEVILLE NORTH CAROLINA

DEPARTMENT OF THE NAVY  
NAVAL STATION  
**ATLANTIC DIVISION**  
NORFOLK, VIRGINIA

MARINE CORPS BASE  
CAMP LEJEUNE, N. C.

UNACCOMPANIED ENLISTED PERSONNEL HOUSING

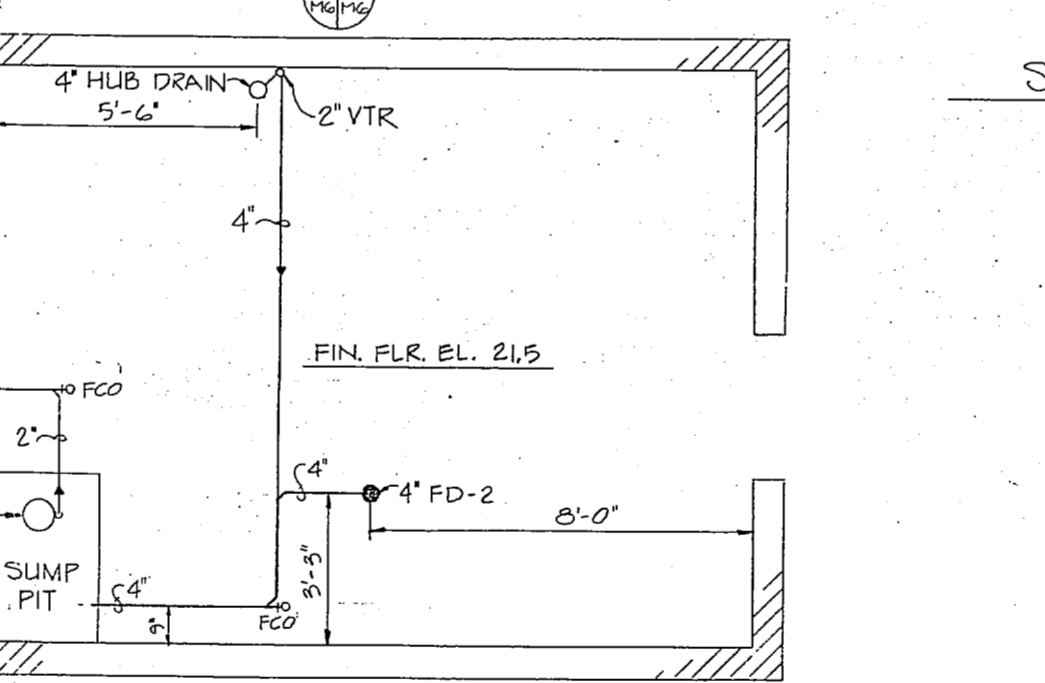
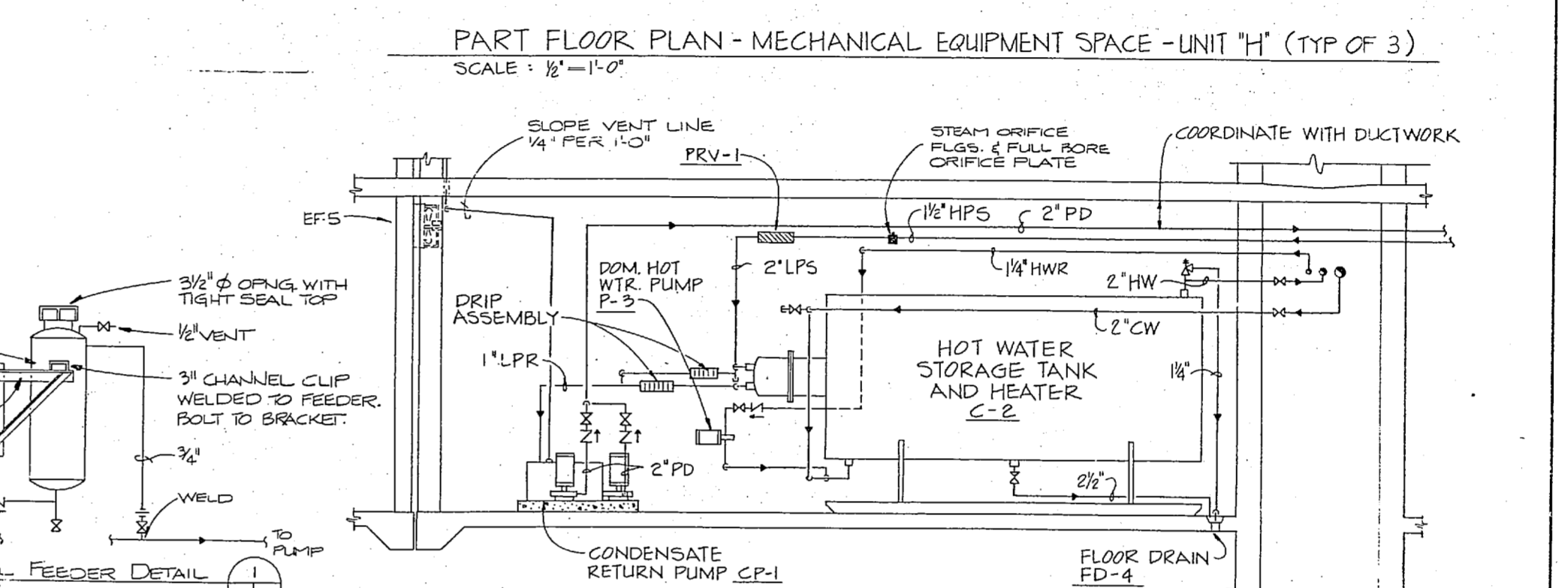
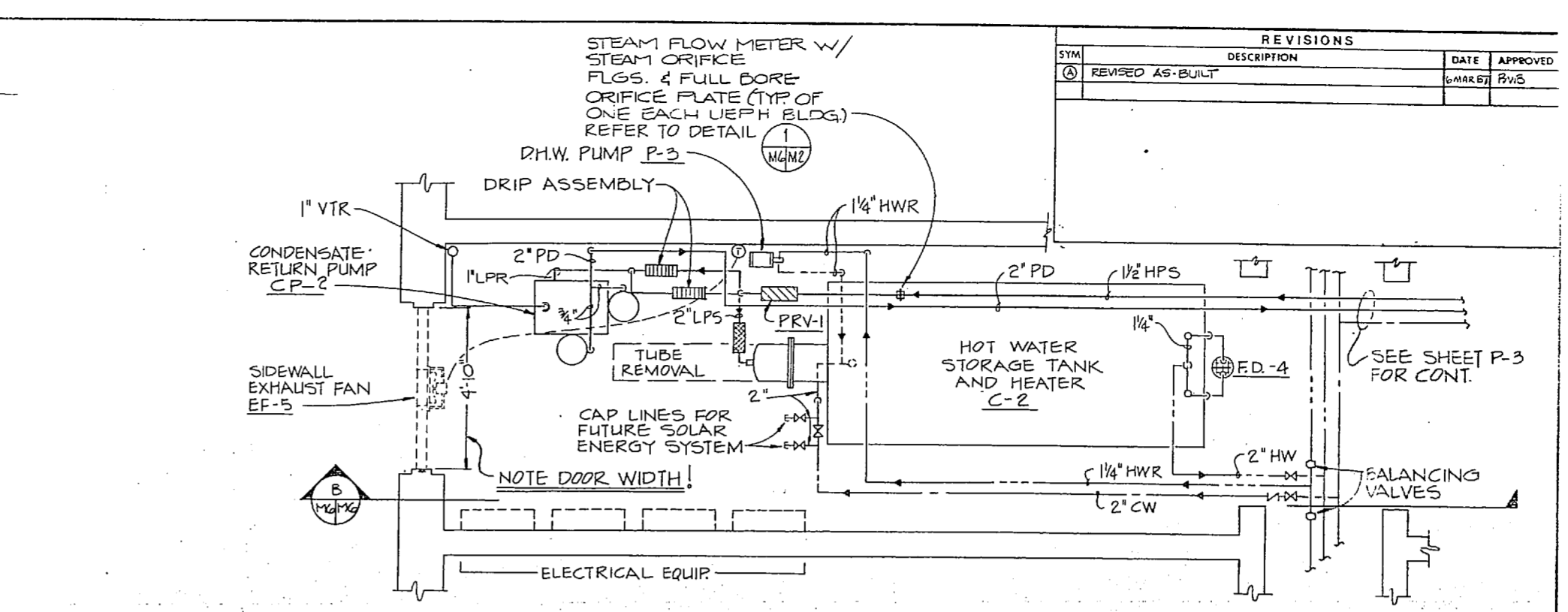
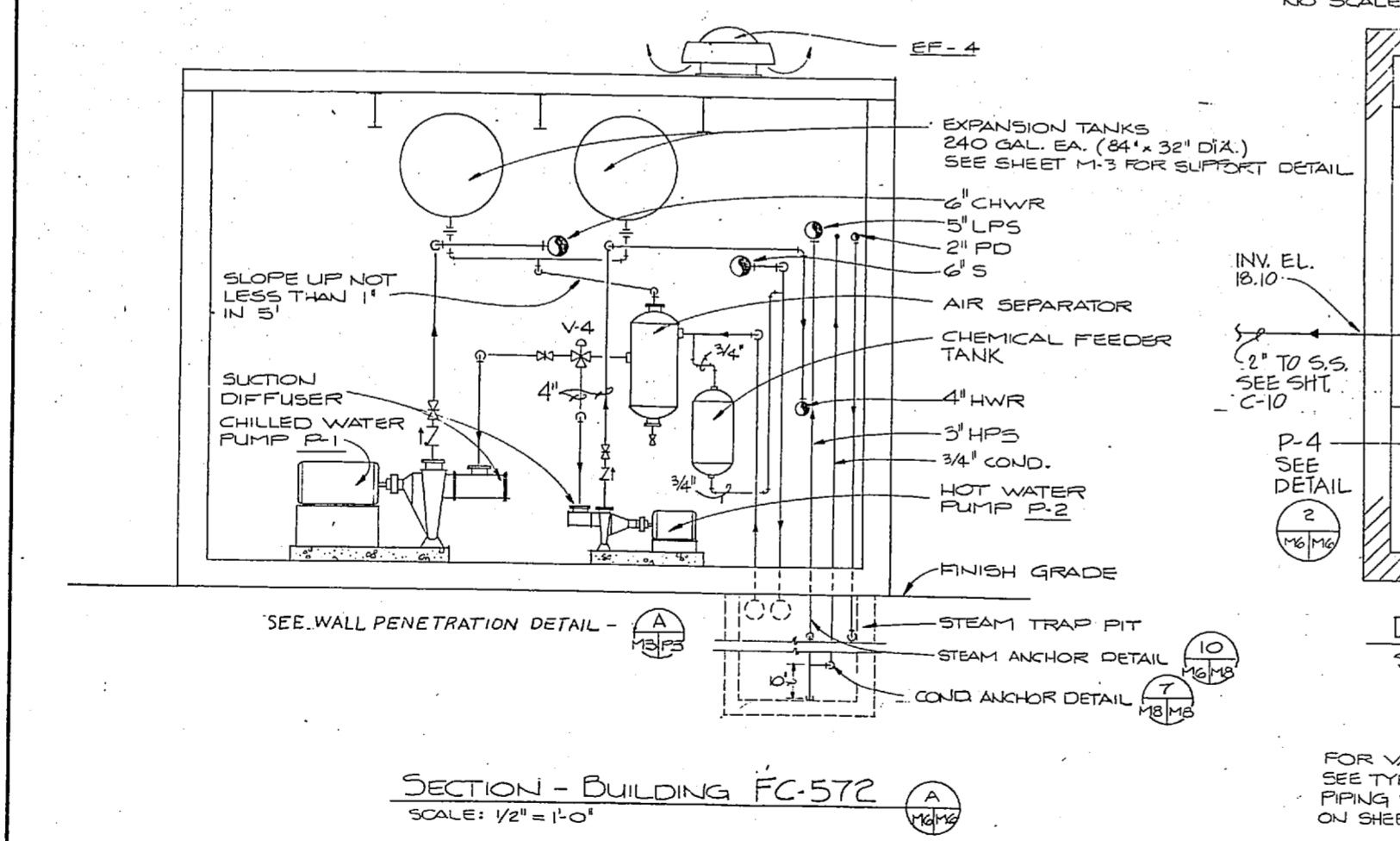
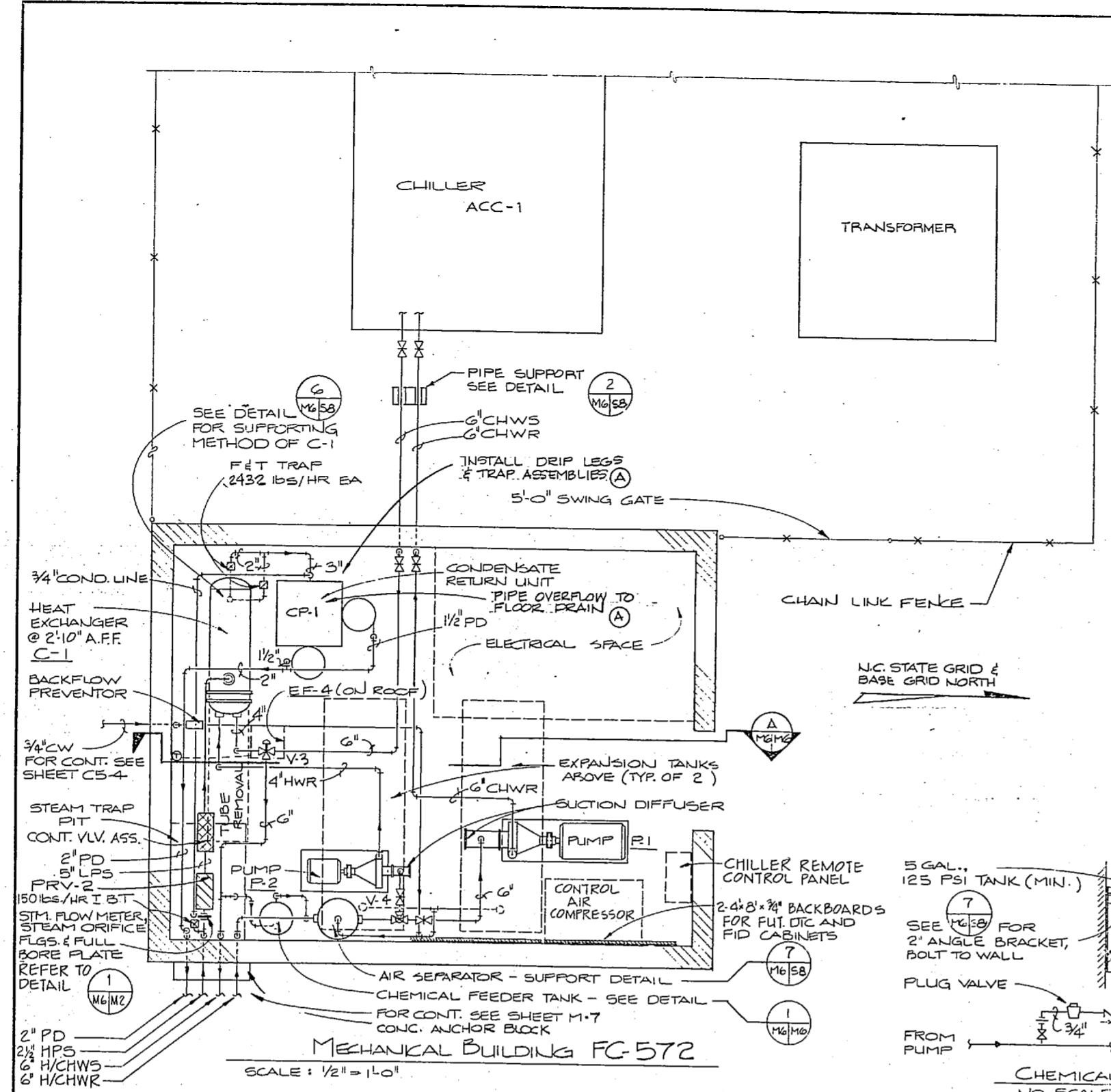
**SYMBOL SCHEDULE & SYSTEM SCHEMATICS**

SIZE: CODE IDENT. NO. NAUPAC DRAWING NO.  
**F 80091** 4099795

DATE: 01/18/54  
DRAWN: JML  
CHECKED: JML

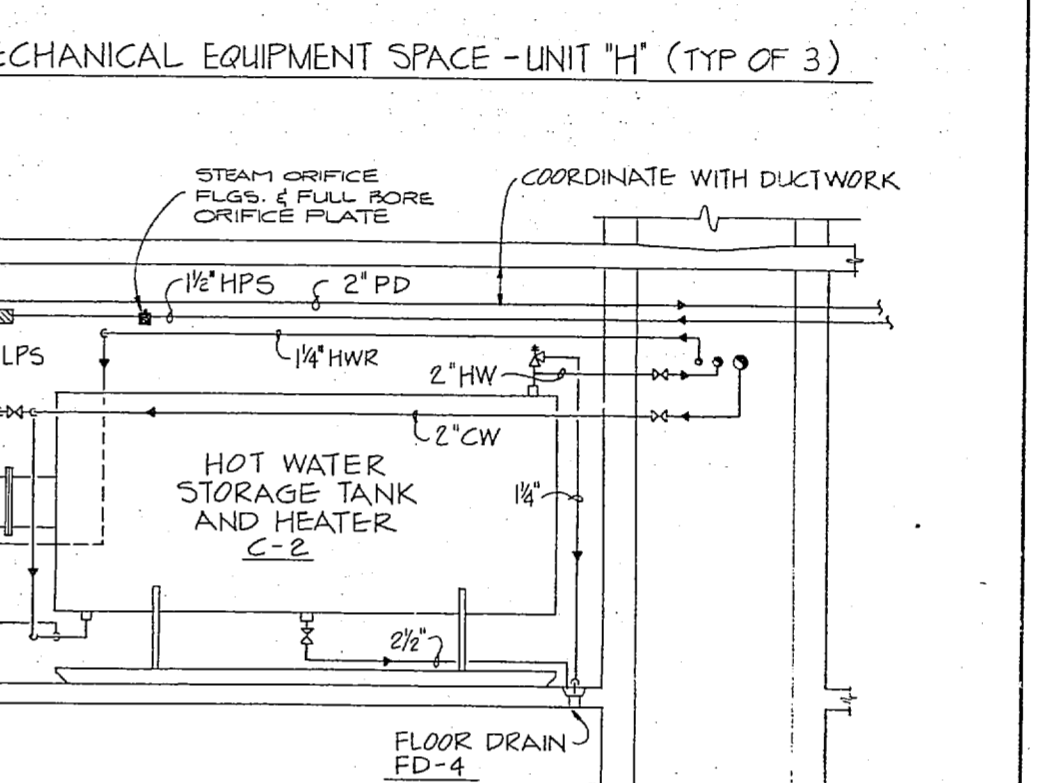
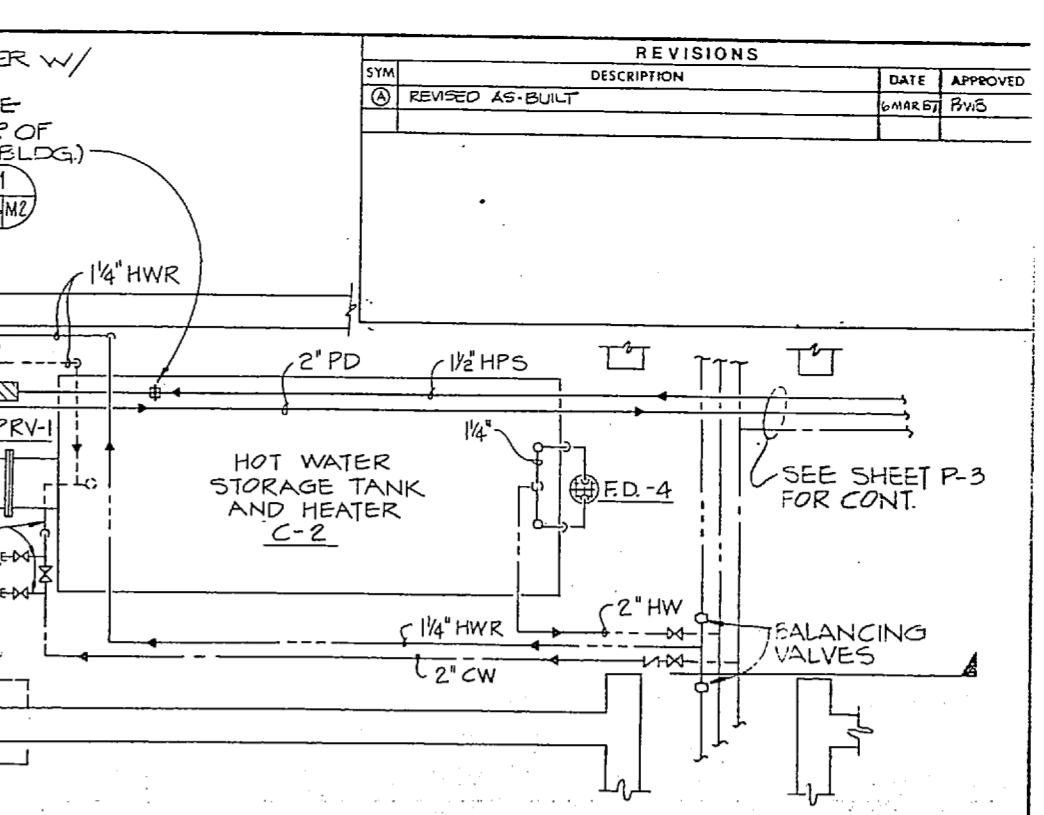
SCALE: 1" = 4' 0"  
SHEET: 47 OF 62  
EFD DWG. NO. 199796





GENERAL NOTE:  
FOR VALVES, UNIONS, STRAINERS, ECT. SEE TYPICAL H.W. STORAGE HEATER PIPING AND PIPING SCHEMATIC FOR CHILLED/H.W. SYSTEM ON SHEET M-5

GRAPHIC SCALE  
1/2" = 1'-0" 1' 2' 3' 4' 5' 6'



REVISIONS		DATE	APPROVED
1	REVISED AS-BUILT		

RECORD DRAWING  
LETTER DATED 4 FEB 1987  
M-6

SIX ASSOCIATES INCORPORATED  
1000 WEST 10TH STREET  
ASHEVILLE NORTH CAROLINA 28801

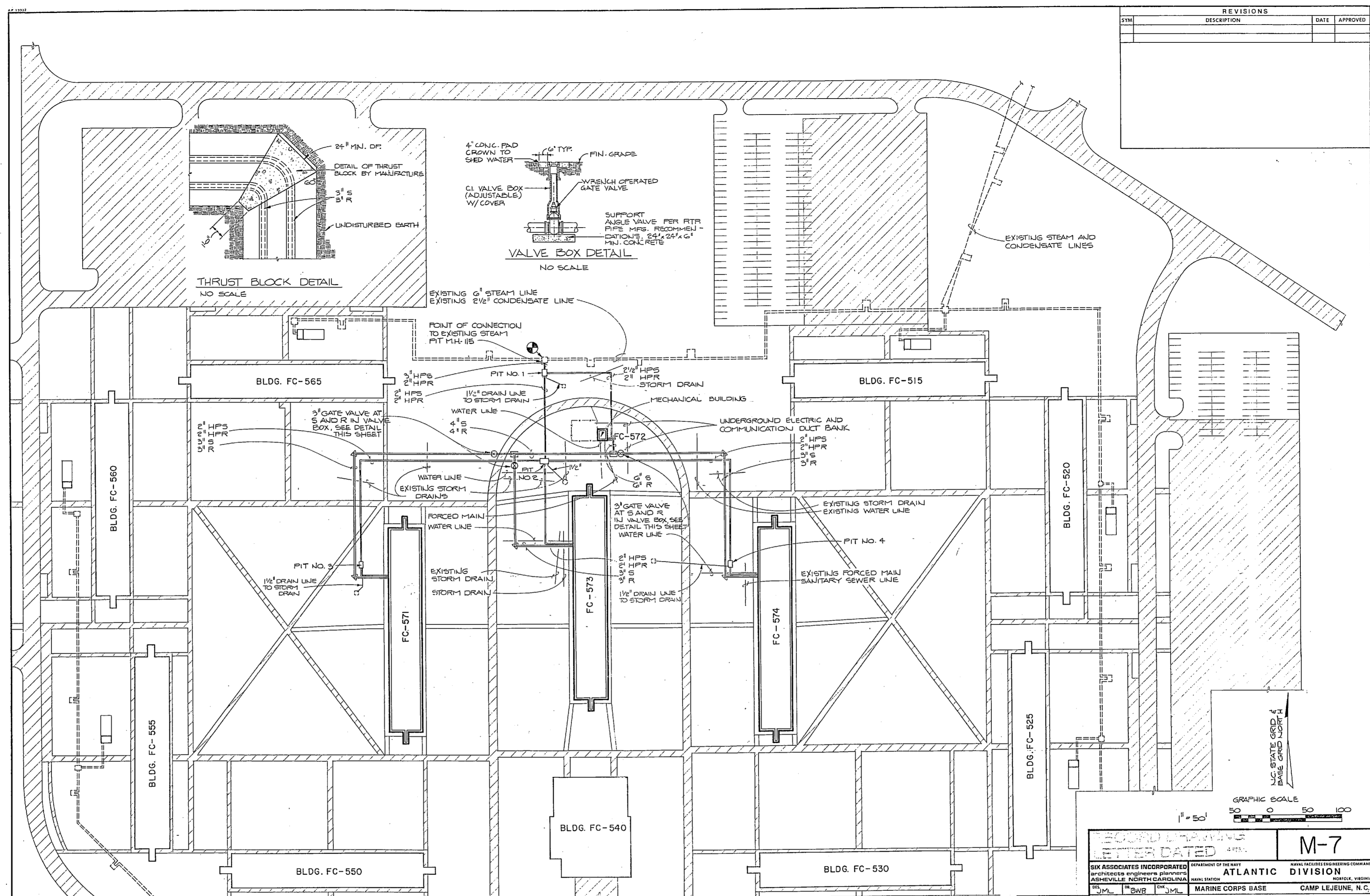
DEPARTMENT OF THE NAVY  
ATLANTIC DIVISION  
MARINE CORPS BASE  
CAMP LEJEUNE, N. C.

UNACCOMPANIED ENLISTED PERSONNEL BUILDINGS  
MECHANICAL ROOM  
PLANS AND DETAILS

SIZE: 4095757  
CODE: 80091  
SCALE: AS NOTED  
SHEET: 48 OF 62  
EPO DSG NCL 199797

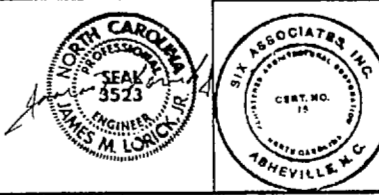


REVISIONS		
SYM	DESCRIPTION	DATE APPROVED



EXISTING TO REMAIN
   
 EXISTING
   
 NEW
   
 EXISTING PIPING (UNDERGROUND)
   
 NEW PIPING (UNDERGROUND)
   
 INTERFACE, EXISTING AND NEW

**LEGEND**
  
 HPS HIGH PRESSURE SUPPLY (STEAM @ 100 P.S.I.G. MIN. - UNDERGROUND)
   
 HPR HIGH PRESSURE RETURN (CONDENSATE @ 60 P.S.I.G. MIN. - UNDERGROUND)
   
 S DUAL TEMPERATURE SUPPLY (HEATING/CHILLED WATER - UNDERGROUND)
   
 R DUAL TEMPERATURE RETURN (HEATING/CHILLED WATER - UNDERGROUND)
   
 ▽ THRUST BLOCK



RECORD DRAWING  
 REVISIONS  
 M-7

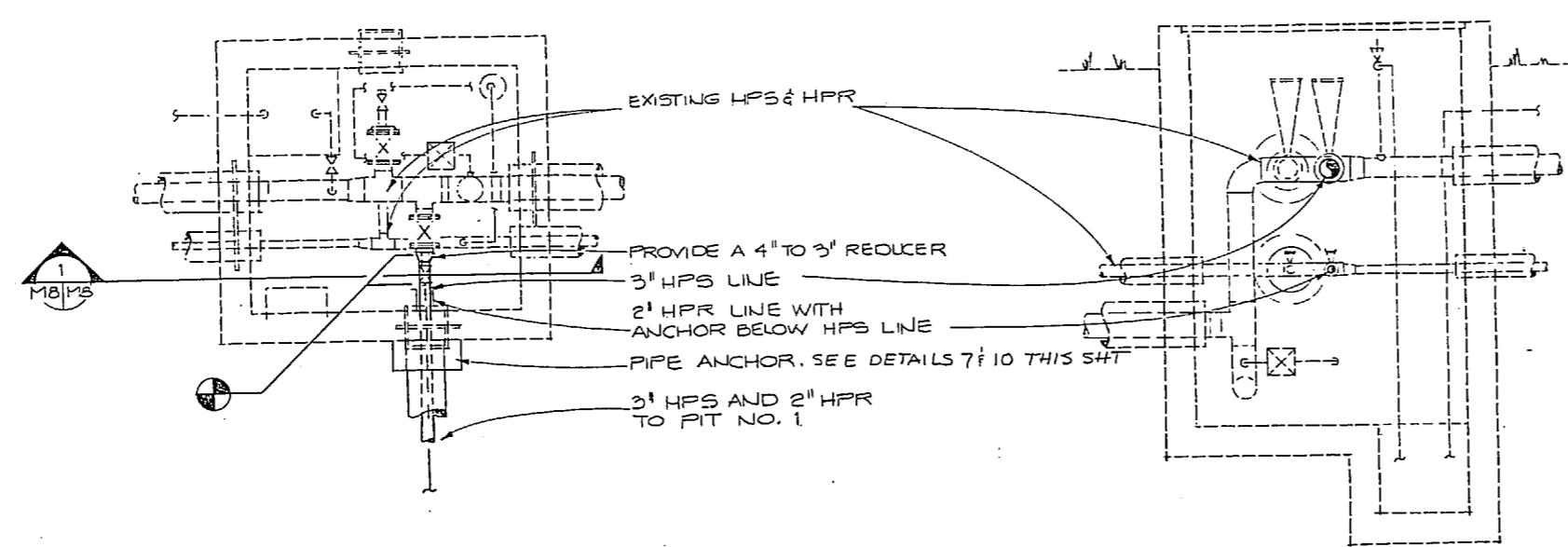
SIX ASSOCIATES INCORPORATED  
 ARCHITECTS ENGINEERS PLANNERS  
 4099798

DEPARTMENT OF THE NAVY  
 NAVAL FACILITIES ENGINEERING COMMAND  
 ATLANTIC DIVISION  
 MARINE CORPS BASE CAMP LEJEUNE, N.C.

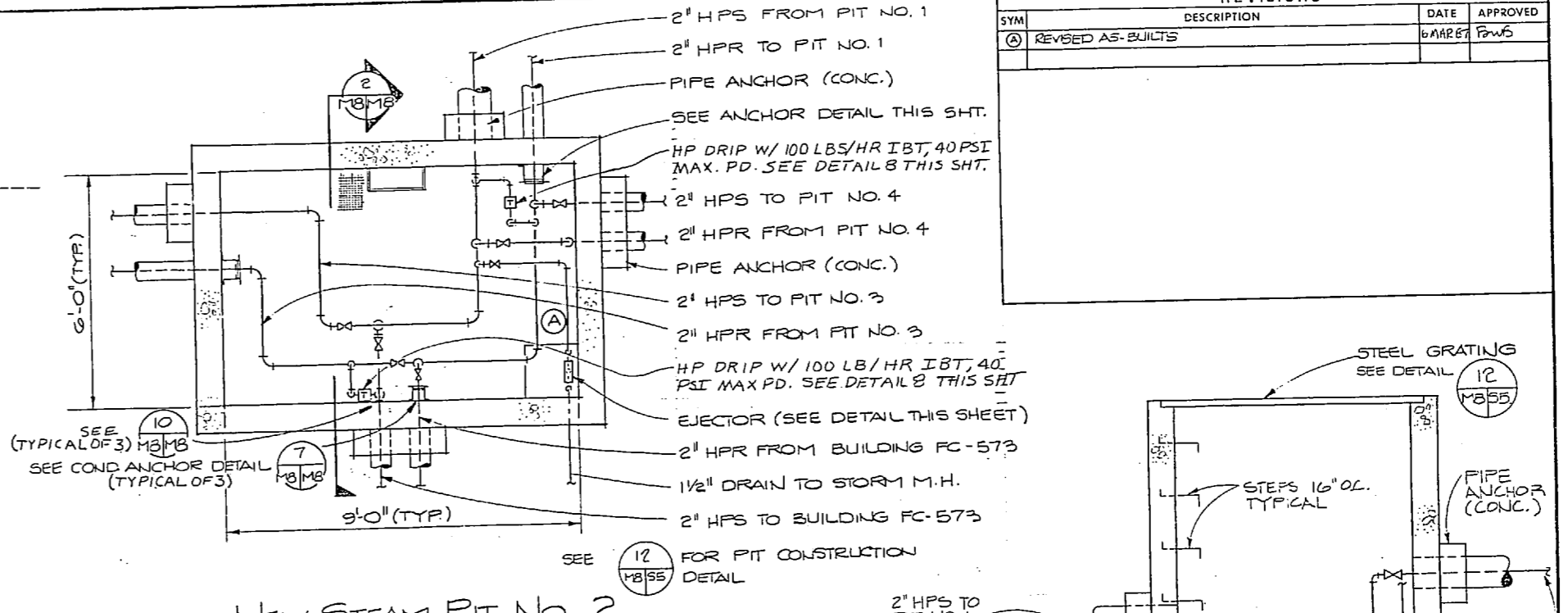
UNACCOMPANIED ENLISTED PERSONNEL HOUSING  
 UTILITY SITE PLAN

SIZE CODE IDENT. NO. NAVFAC DRAWING NO.  
 F 80091 4099798  
 DATE 07 MAR 1984  
 SHEET 49 OF 62  
 EFD DWG. NO. 199798

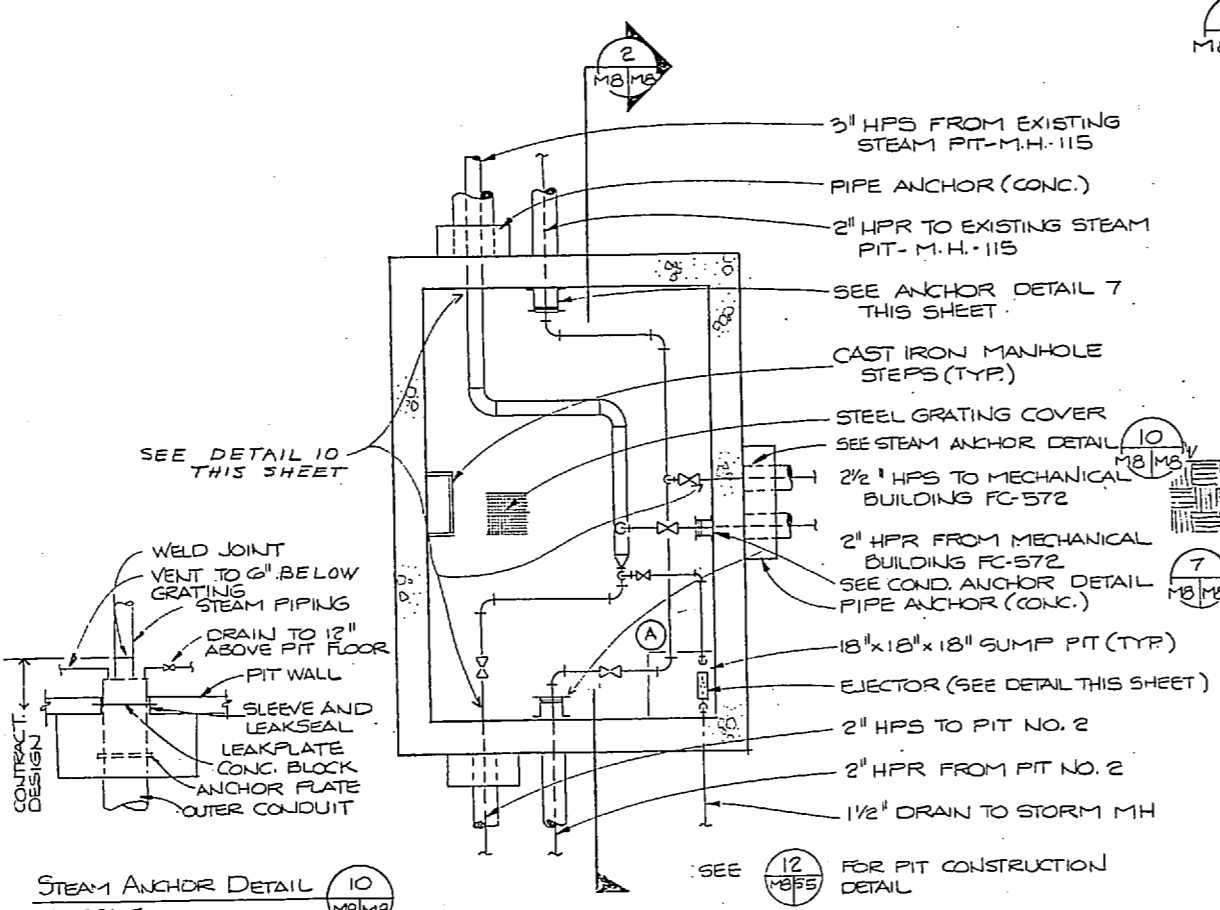




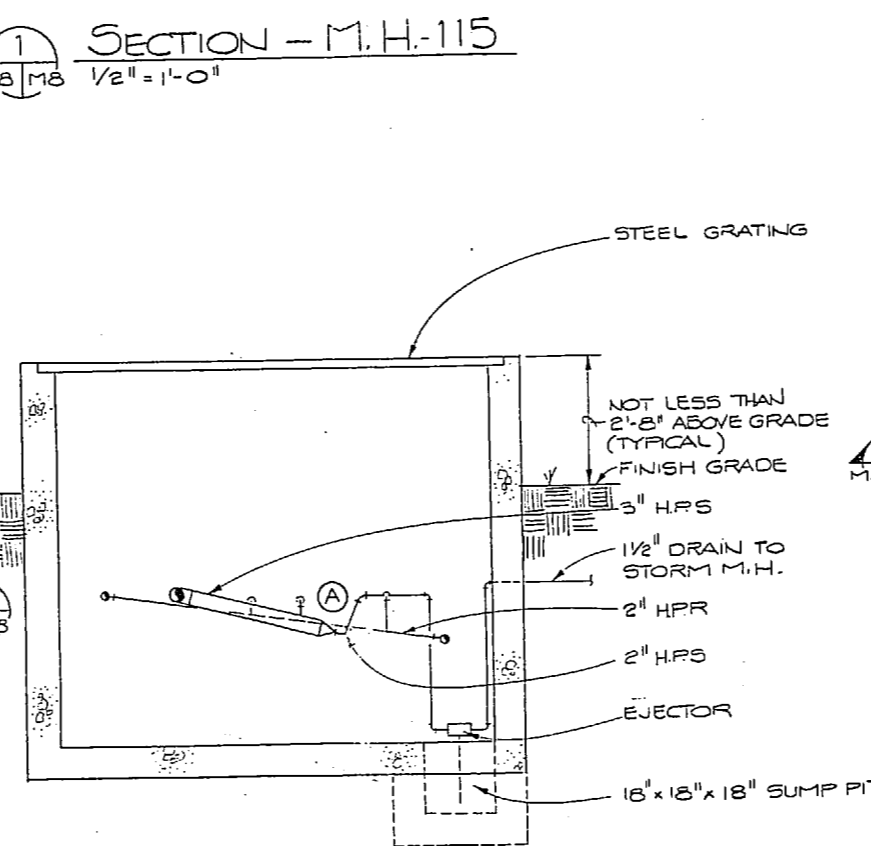
EXISTING STEAM PIT - M.H. 115  
1/2" = 1'-0"



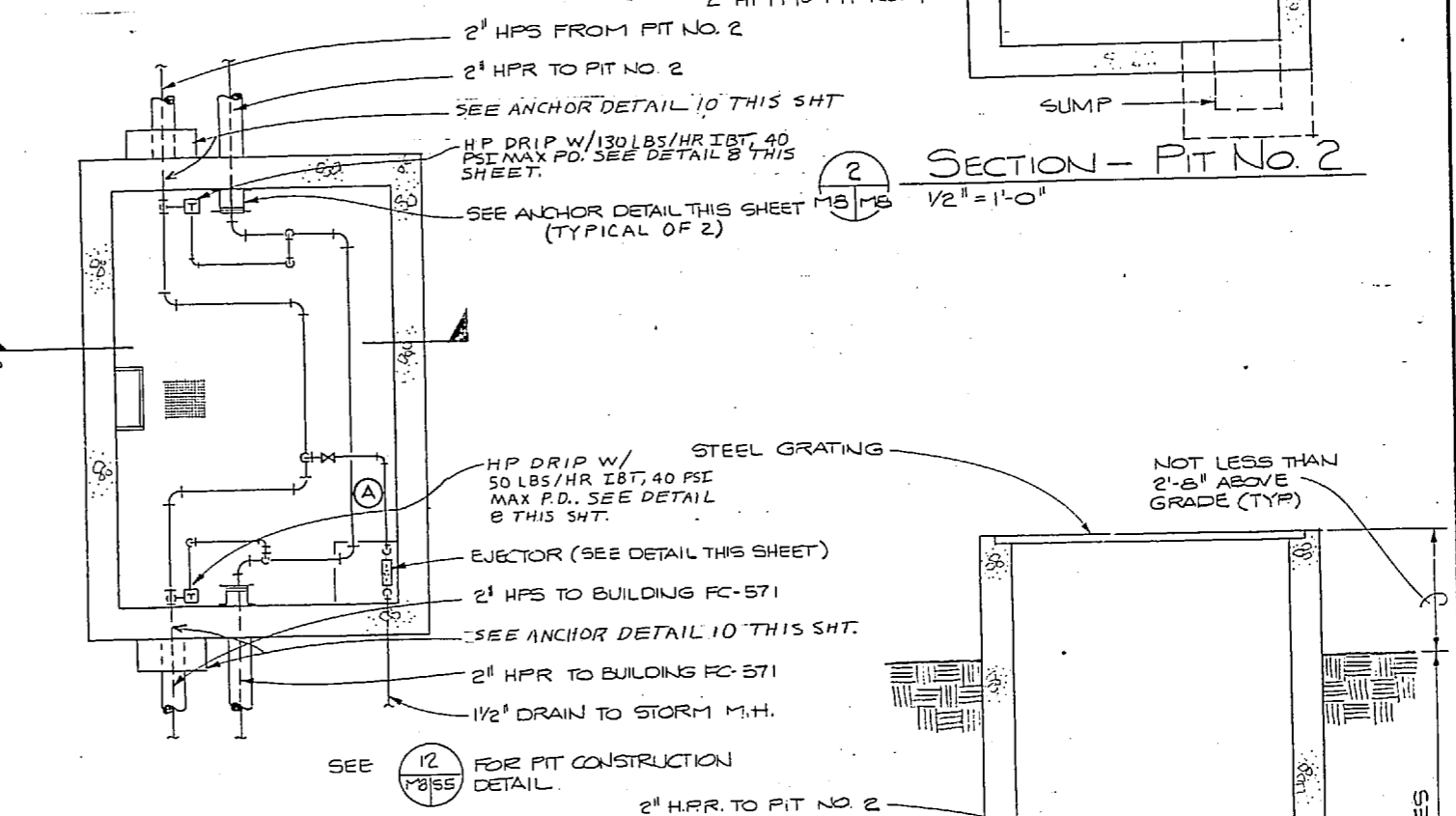
NEW STEAM PIT No. 2  
1/2" = 1'-0"



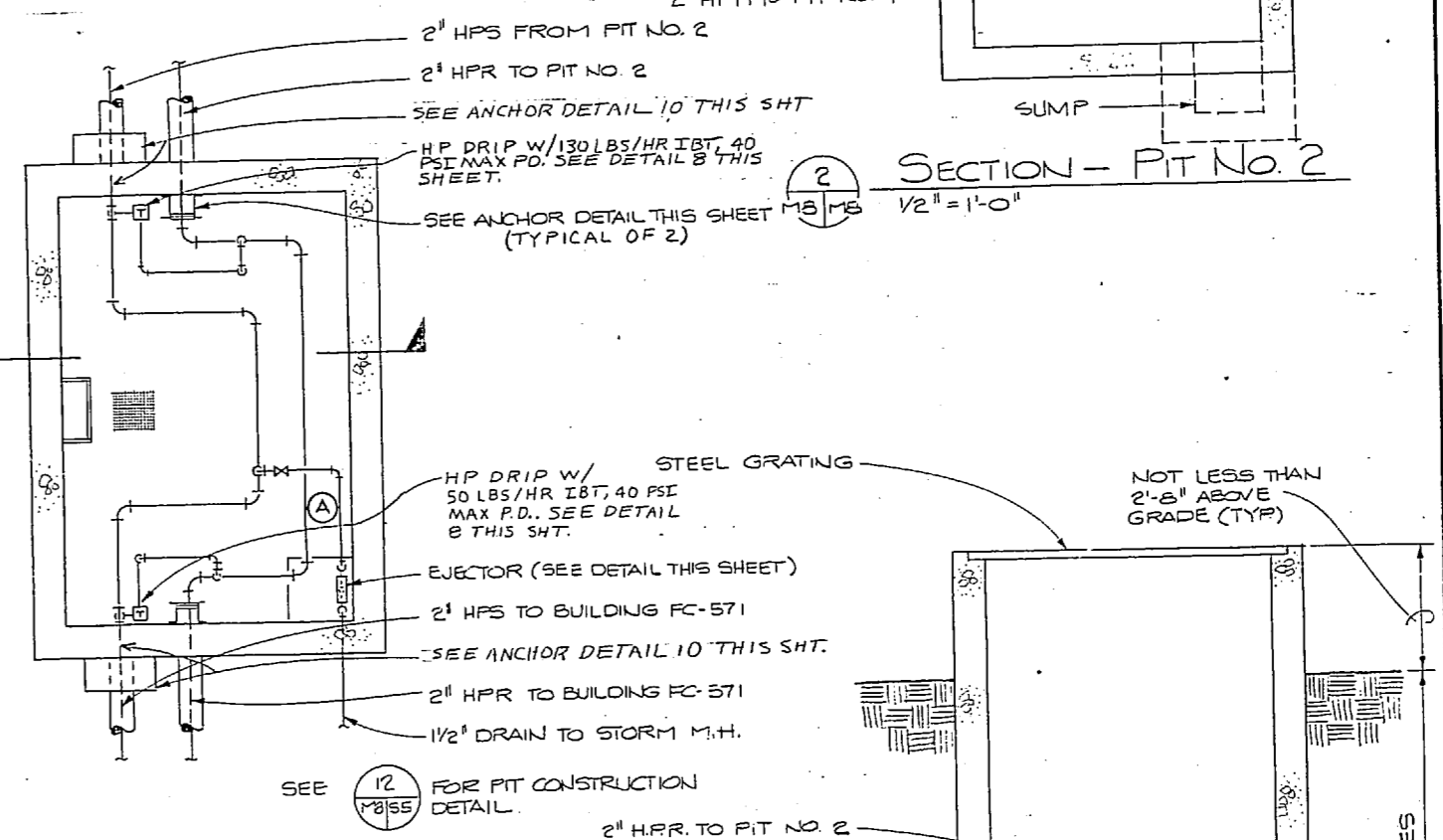
NEW STEAM PIT No. 1  
1/2" = 1'-0"



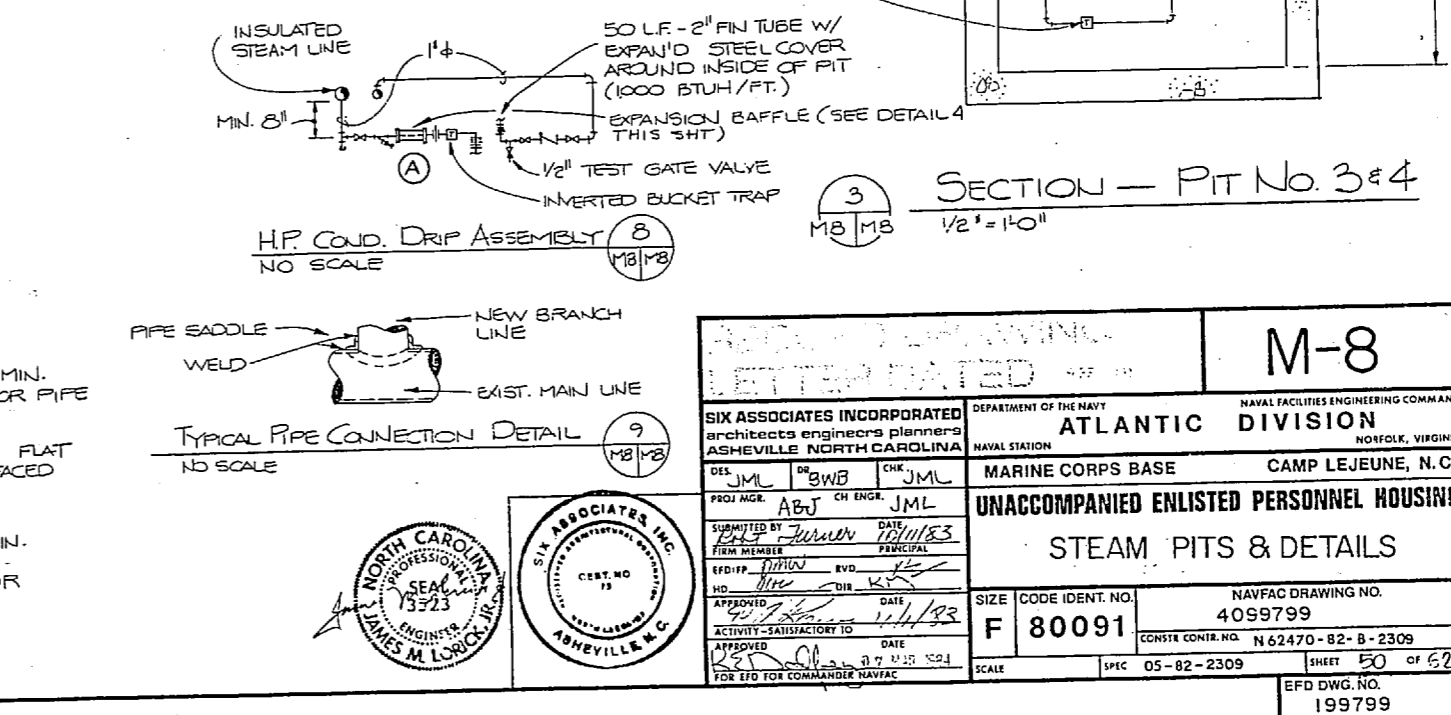
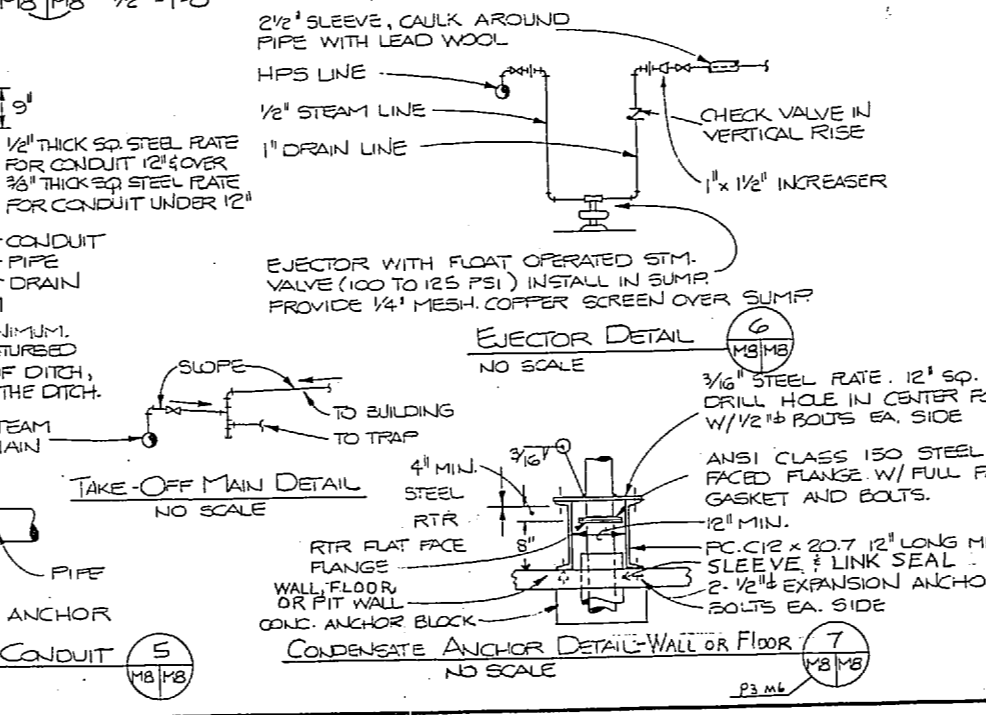
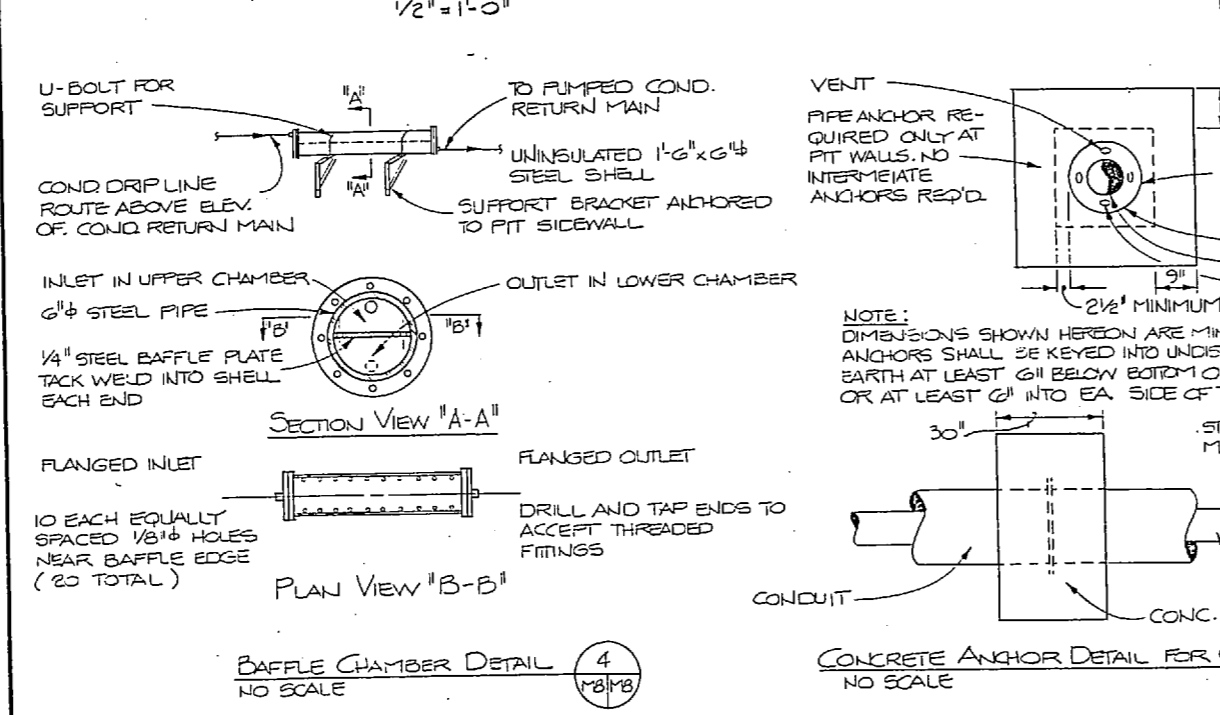
SECTION - PIT No. 1  
1/2" = 1'-0"



NEW STEAM PIT No. 3 & 4  
1/2" = 1'-0"



SECTION - PIT No. 2  
1/2" = 1'-0"



REVISIONS			
SYM	DESCRIPTION	DATE	APPROVED
0	REVISED AS-BUILTS	6 MAR 68	FRMS

**M-8**

SIX ASSOCIATES INCORPORATED  
ENGINEERS ARCHITECTS  
ASHEVILLE NORTH CAROLINA

DEPARTMENT OF THE NAVY  
ATLANTIC DIVISION  
MARINE CORPS BASE  
CAMP LEJEUNE, N.C.

UNACCOMPANIED ENLISTED PERSONNEL HOUSING  
STEAM PITS & DETAILS

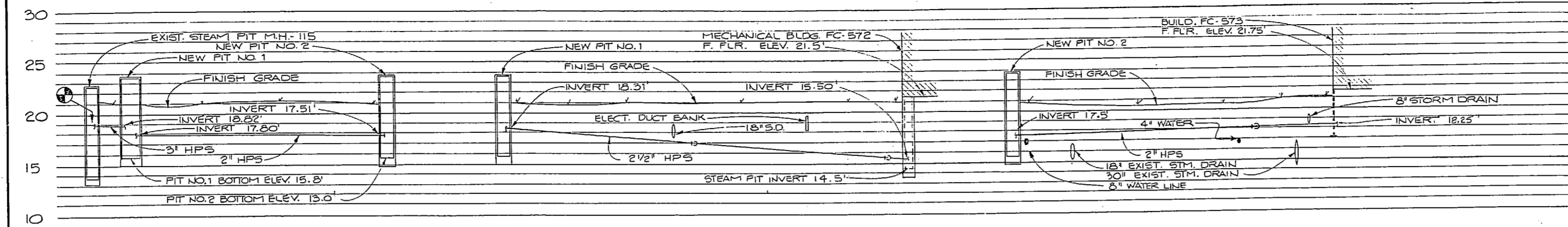
NAVAC DRAWING NO. 4099799  
CONTRACT NO. N 62470-82-B-2309  
DATE 05-82-2309

SCALE 1/2" = 1'-0"

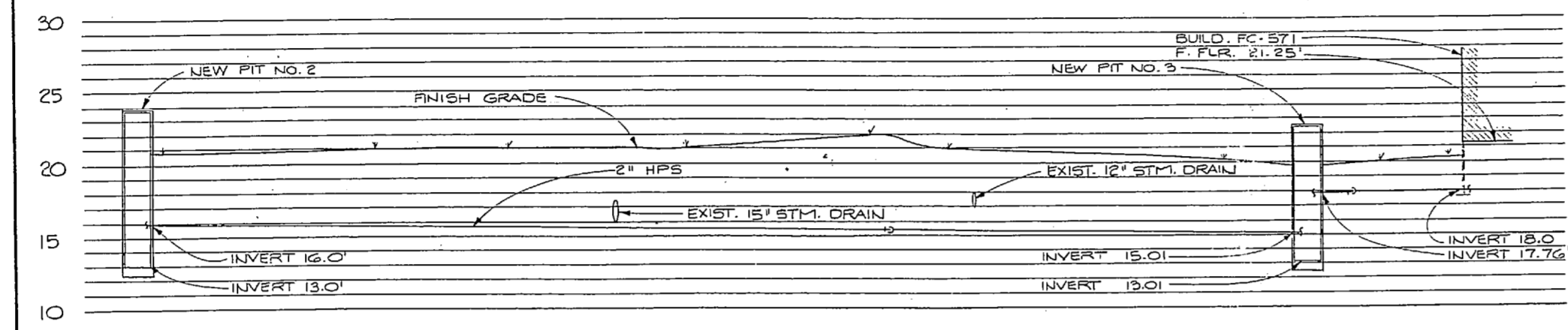




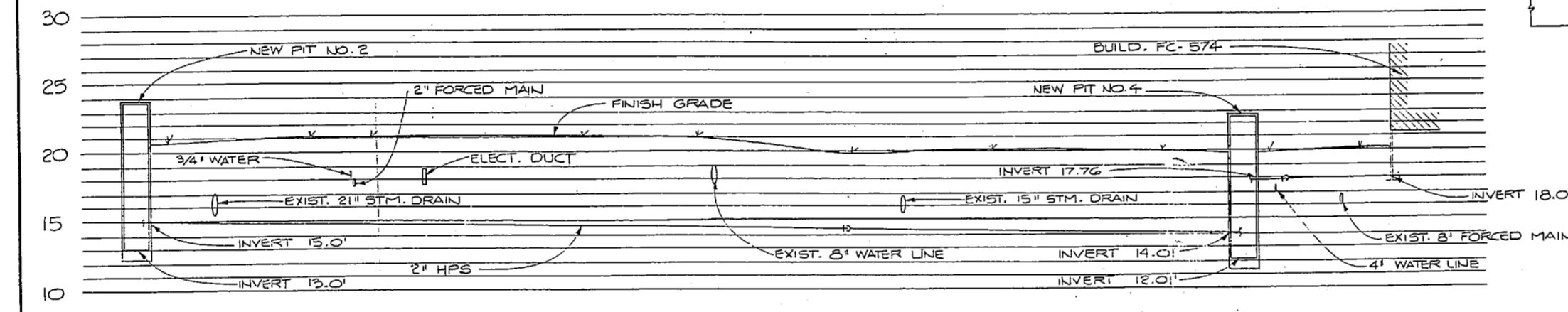
REVISIONS			
SYM	DESCRIPTION	DATE	APPROVED
(3)	REVISED AS-BUILT	8/14/81	JMB



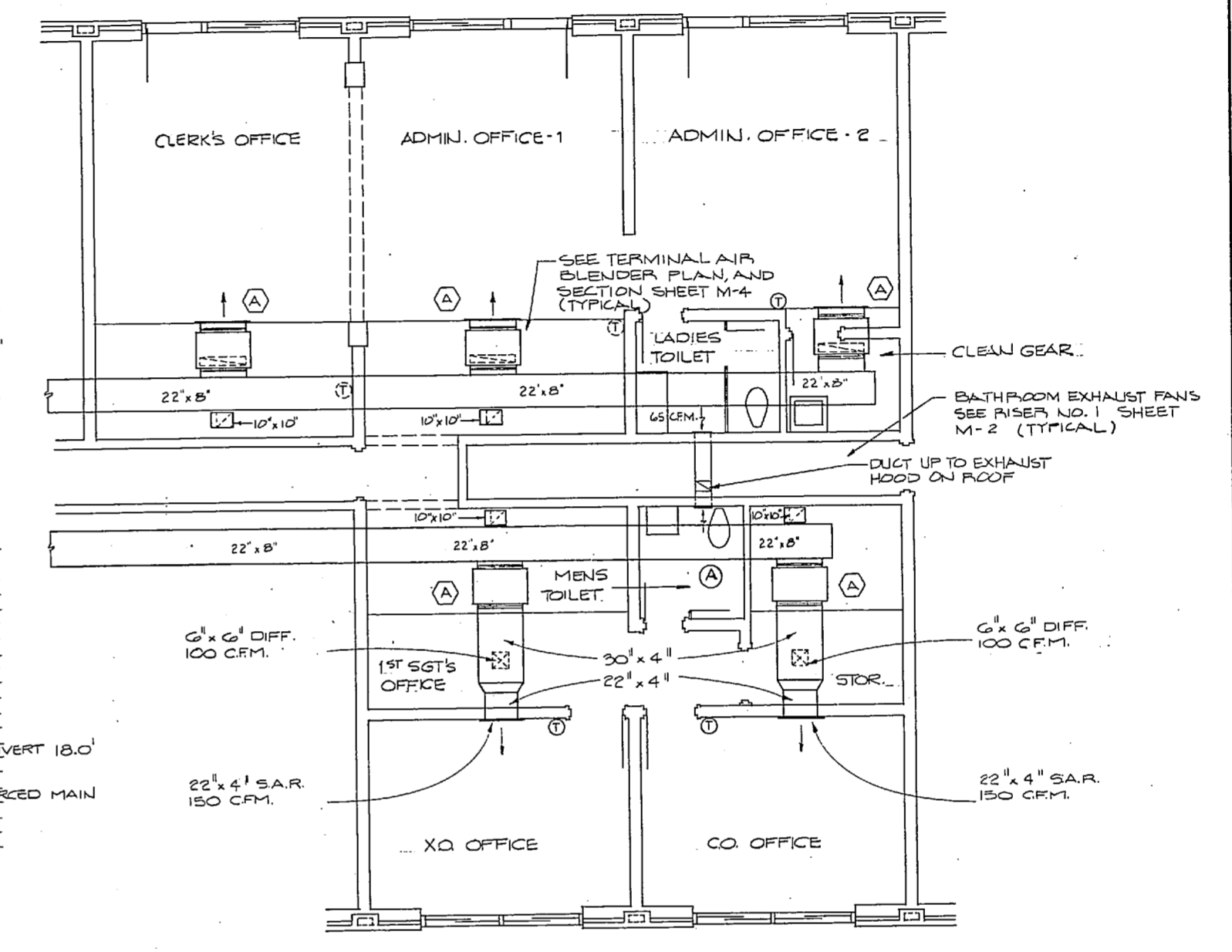
STEAM PROFILES  
SCALE: HORIZ. 1" = 25'  
VERT. 1" = 5'



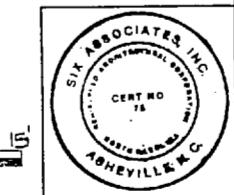
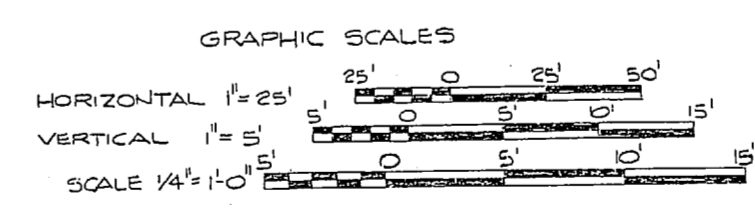
STEAM PROFILE  
SCALE: HORIZ. 1" = 25'  
VERT. 1" = 5'



STEAM PROFILE  
SCALE: HORIZ. 1" = 25'  
VERT. 1" = 5'



TYPICAL UNIT "G"  
SCALE: 1/4" = 1'-0"



RECORD INFORMATION LETTER DATED		M-9	
SIX ASSOCIATES INCORPORATED architects engineers planners ASHEVILLE NORTH CAROLINA		DEPARTMENT OF THE NAVY NAVAL FACILITIES ENGINEERING COMMAND ATLANTIC DIVISION NORFOLK, VIRGINIA	
PROJECT: UNACCOMPANIED ENLISTED PERSONNEL HOUSING TYPICAL UNIT "G" 8 STEAM PROFILES		MARINE CORPS BASE CAMP LEJEUNE, N.C.	
DESIGNED BY: J.M.L.	CHECKED BY: J.M.L.	SIZE: F 80091	NAVAFAC DRAWING NO.: 4099800
DATE: 11/13/78	DATE: 11/13/78	CONTRACT NO.: N62470-82-B-2309	NAVAFAC DRAWING NO.: 4099800
APPROVED BY: J.M.L.	DATE: 11/13/78	SCALE: 1/4" = 1'-0"	NAVAFAC DRAWING NO.: 4099800
NOT FOR CONSTRUCTION		EFD DWG. NO.: 199800	

4  $\frac{3}{4}$ " sheet metal strips

D/B

