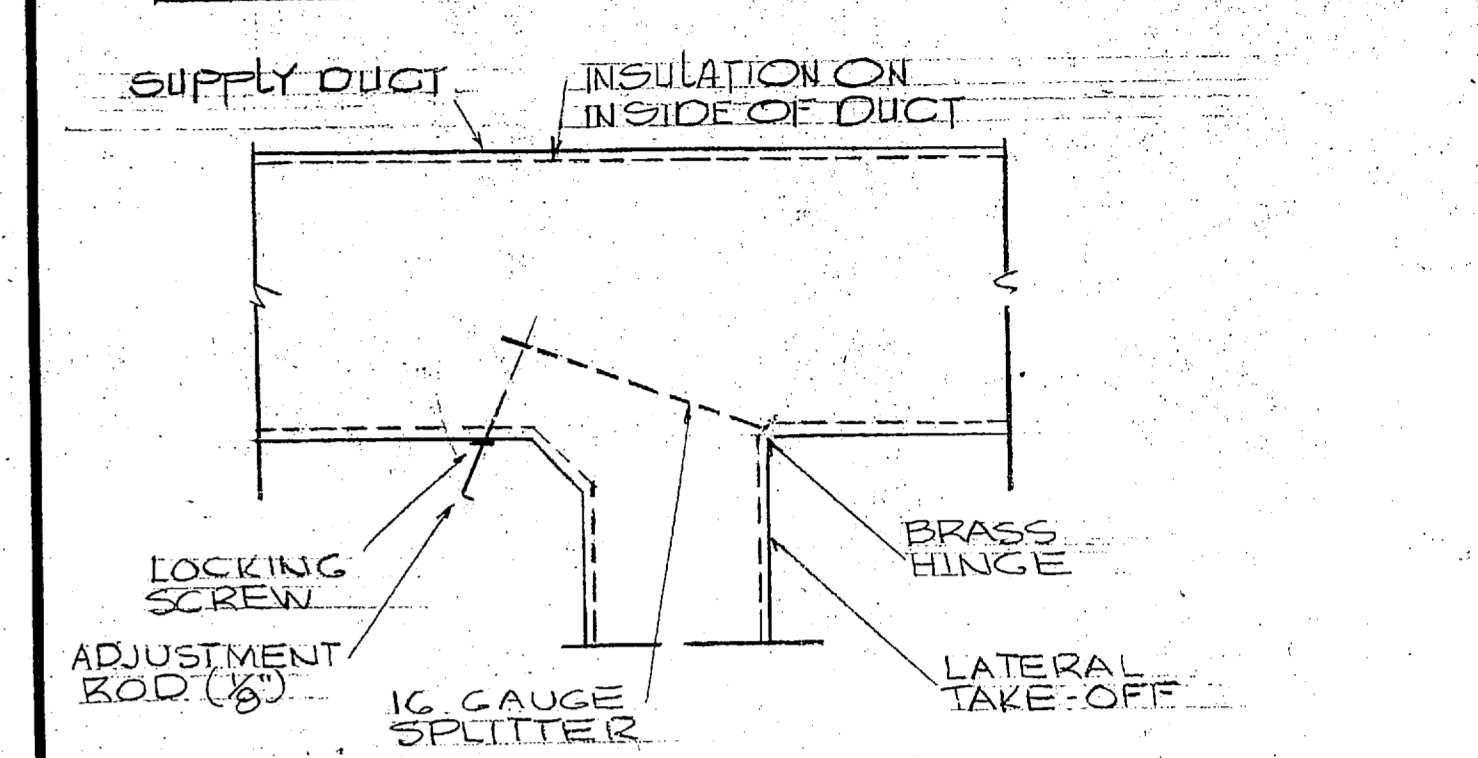


REV	DESCRIPTION	DATE	APPROVED
1	INCREASE DIMENSION FROM FIN. FL. TO BOT. OF RAD.	6-5-81	HOT
2	REVISED BASEBOARD RAD. LENGTHS	6-28-81	HOT
3	RELOCATED THERMOSTAT ON BASEBOARD RAD.	6-28-81	HOT
4	RELOCATED DUCTWORK IN CLASSROOM 2	6-28-81	HOT
5	INSTALLED ACCESS DOORS IN AIR HANDLING UNIT #1 DUCT	6-28-81	HOT
6	# OF CMU REMOVED ABOVE CEILING FOR T.V.A.	6-28-81	HOT



1 BASEBOARD RADIATION DETAIL NO SCALE

2 TYPICAL DUCT & VAV BOX INSTALLATION DETAIL 3/4\"/>

3 SECURITY BAR NO SCALE

4 TYPICAL SPLITTER DAMPER NO SCALE

CONVERTER: CAPACITY OF 60.6 GPM WATER HEATED FROM 180°F TO 200°F WHEN SUPPLIED WITH 30\"/>

HOT WATER PUMP: CAPACITY OF 60.6 GPM, 60\"/>

CHILLED WATER PUMP #1: CAPACITY OF 88.5 GPM, 52\"/>

CHILLED WATER PUMP #2: CAPACITY OF 107.2 GPM, 50\"/>

HOT WATER GENERATOR: CAPACITY OF 818 GALLON STORAGE, STEAM HEATING COIL CAPACITY TO HEAT 803 GALLONS FROM 40°F TO 140°F, 54\"/>

CONDENSATE PUMP: CAPACITY OF 8000 E.D.R., 2 HP, 208 VOLT, 3 PHASE PUMP MOTOR, 12 GPM, 60 PSI DISCHARGE PRESSURE, 23 GALLON CAST IRON RECEIVER, DUPLEX PUMPS.

AIR HANDLING UNIT #1: VERTICAL AIR HANDLING UNIT WITH A CAPACITY OF 13371 CFM, 2\"/>

AIR HANDLING UNIT #2: VERTICAL AIR HANDLING UNIT WITH A CAPACITY OF 20000 CFM, 3\"/>

RADIATION: FINNED TUBE, 18\"/>

VAV BOXES: SHUT-OFF TYPE WITH VOLUME CONTROL MOTOR.

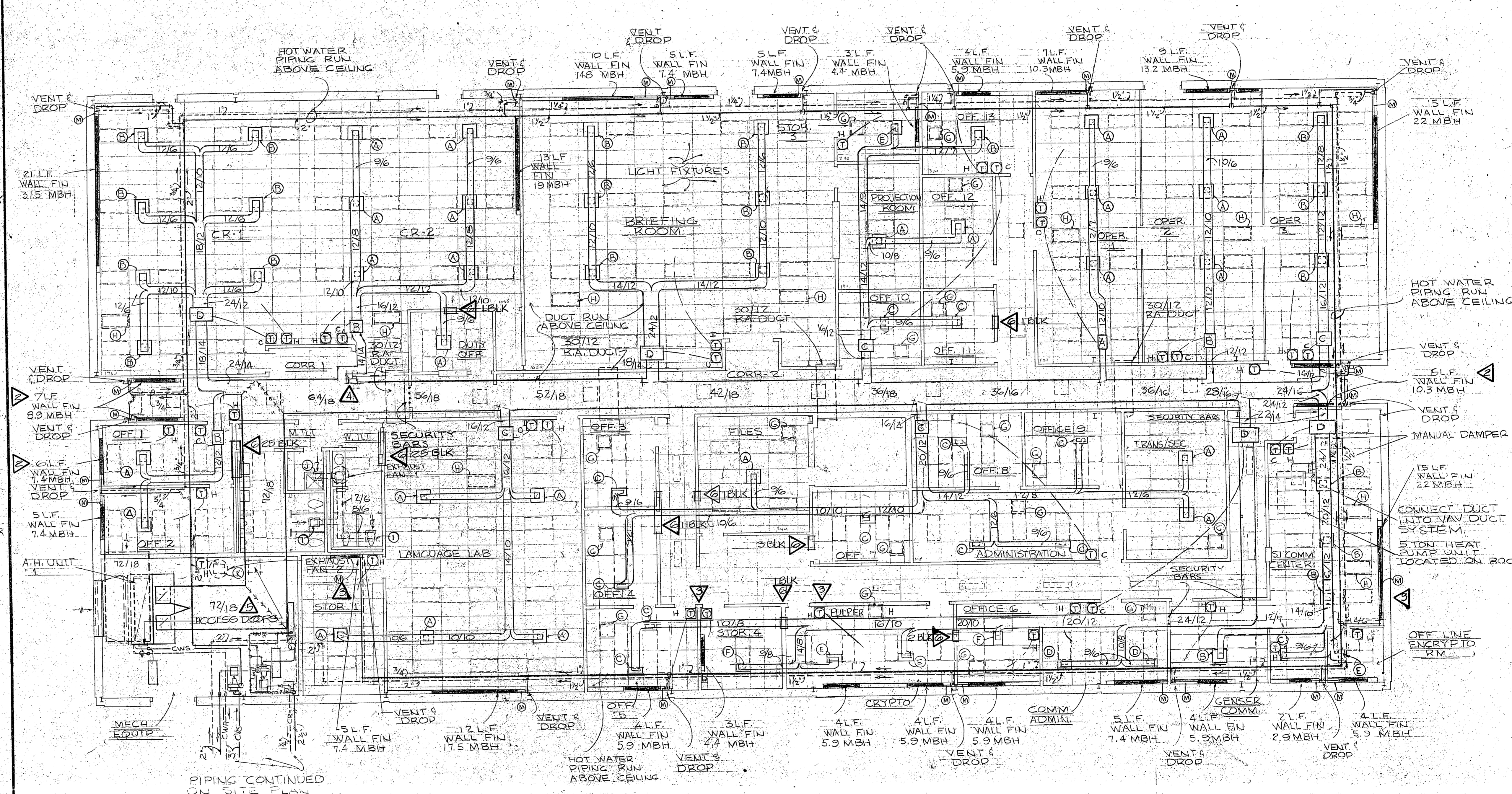
AIR COOLED CHILLER: AIR COOLED CHILLER WITH TWO COMPRESSORS WITH A CAPACITY OF 82 TONS, 44\"/>

UNIT HEATERS: UNIT HEATERS 'A': HORIZONTAL PROPELLER FAN, CAPACITY OF 57000 BTU/HR, 200°F E.W.T., 60°F E.A.T., 20°F TEMP DROP, 6.2 GPM, 1535 CFM, 1550 RPM, 3/4\"/>

FANS: FAN #1: 14.5\"/>

THRU-WALL UNIT: UNIT SHALL HAVE ELECTRIC COILS FOR HEATING & A COMPRESSOR CONDENSING UNIT COMPLETE WITH CONTROLS, FAN, ETC., CAPACITY OF 3000 BTU/HR COOLING, 8100 BTU/HR HEATING, 230/208 VOLT, 1 PHASE, 1.7 AMPS COOLING & 14.1 AMPS HEATING.

ROOF TOP HEAT PUMP: ROOF TOP AIR TO AIR HEAT PUMP WITH THE FOLLOWING CAPACITY, 61000 BTU/HR, 67°F EWB, 35°F EDB TO CONDENSER 2700 CFM, 150 RPM, 5\"/>



4 EQUIPMENT SCHEDULE

5 FLOOR PLAN - BATTALION OPERATIONS CENTER 1/8\"/>

<b>RECORD DRAWING</b> DATE: 3 JUNE 1981 FCB/4		<b>M-2</b>
FISHEL AND TAYLOR ARCHITECTS RALEIGH - NORTH CAROLINA		
DEPARTMENT OF THE NAVY NAVAL FACILITIES ENGINEERING COMMAND ATLANTIC DIVISION NAVAL STATION NORFOLK - VIRGINIA		MARINE CORPS BASE - FRENCH CREEK AREA CAMP LEJEUNE - NORTH CAROLINA <b>OPERATIONS AND MAINTENANCE FACILITY</b> BOC FLOOR PLAN - DETAILS - EQUIPMENT SCHEDULE
PROJECT NO: HT CR ENGR: LO SUBMITTED BY: [Signature] EFD: [Signature]		
APPROVED: [Signature] DATE: [Date]		SIZE: F CODE IDENT NO: 80091 NAVFAC DRAWING NO: 4048094 CONSTR CONTR NO: N62470-77-B-7599 SCALE AS NOTED SPEC: 05-77-7599-9 SHEET: 36 OF 45 EFD BWC NO: 148094

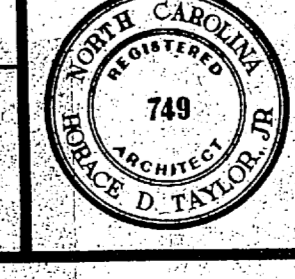
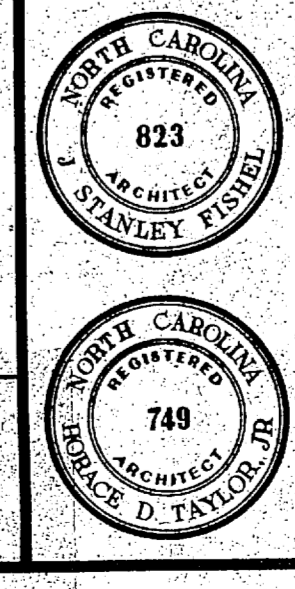
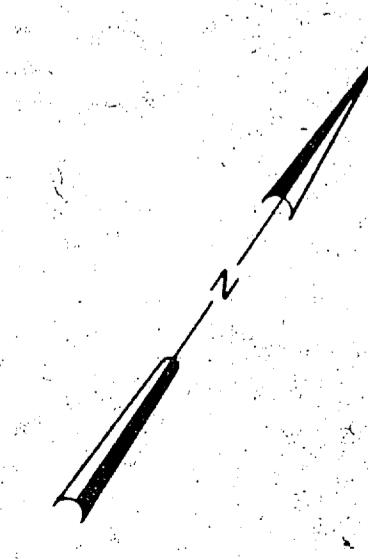
GRAPHIC SCALES

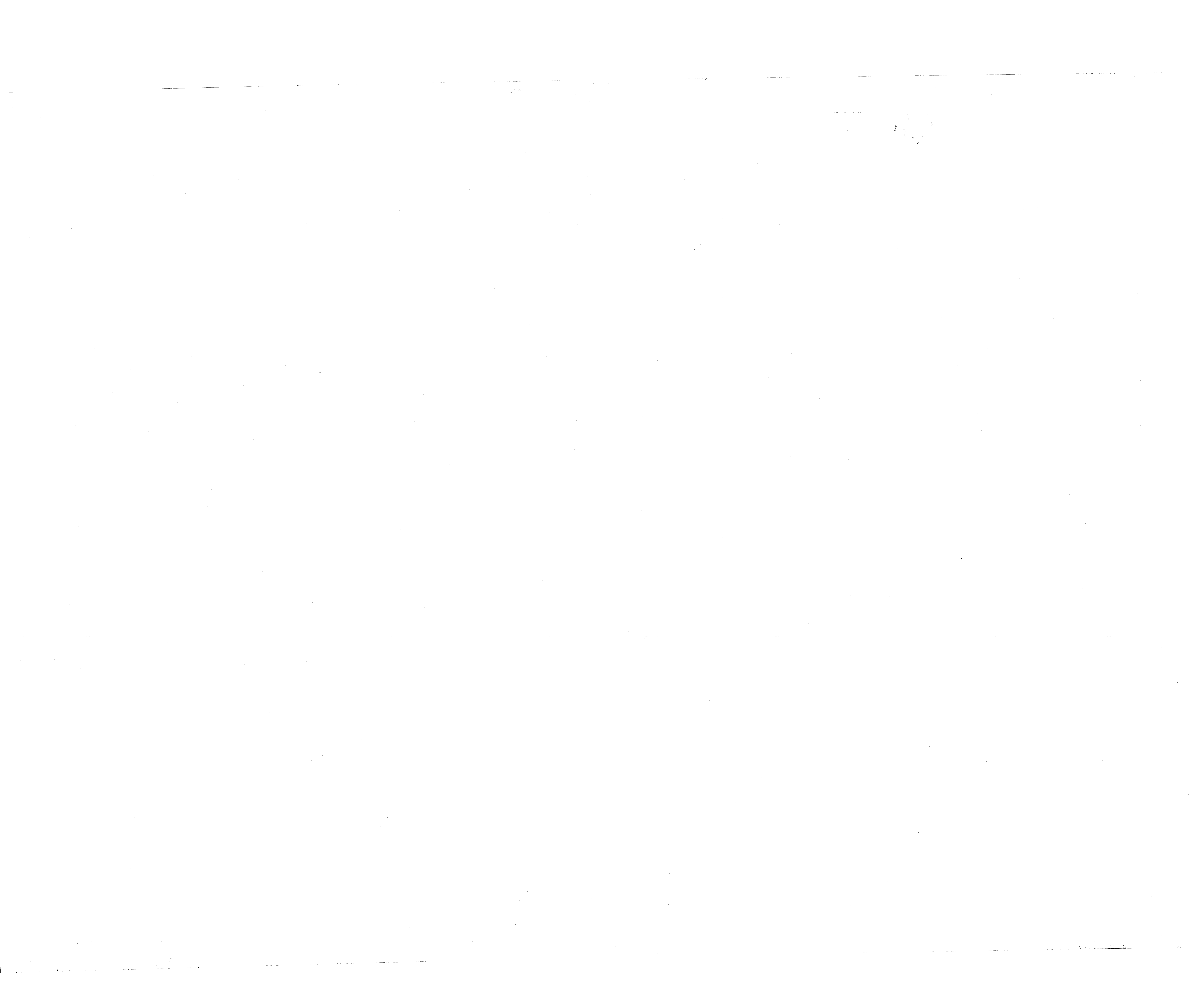
1/8" = 1'-0" (Scale 0 to 24 FT)

3/4" = 1'-0" (Scale 0 to 4 FT)

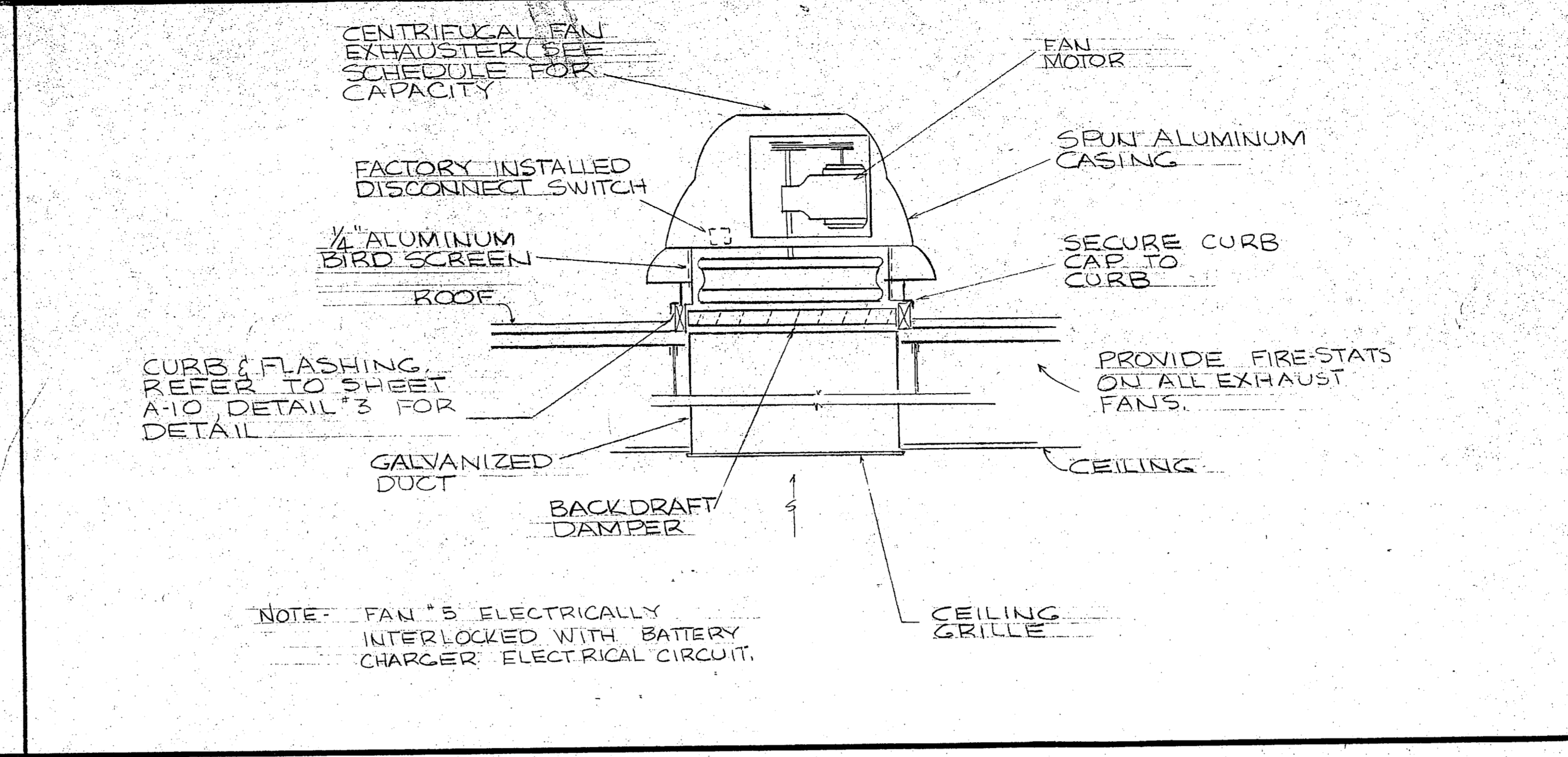
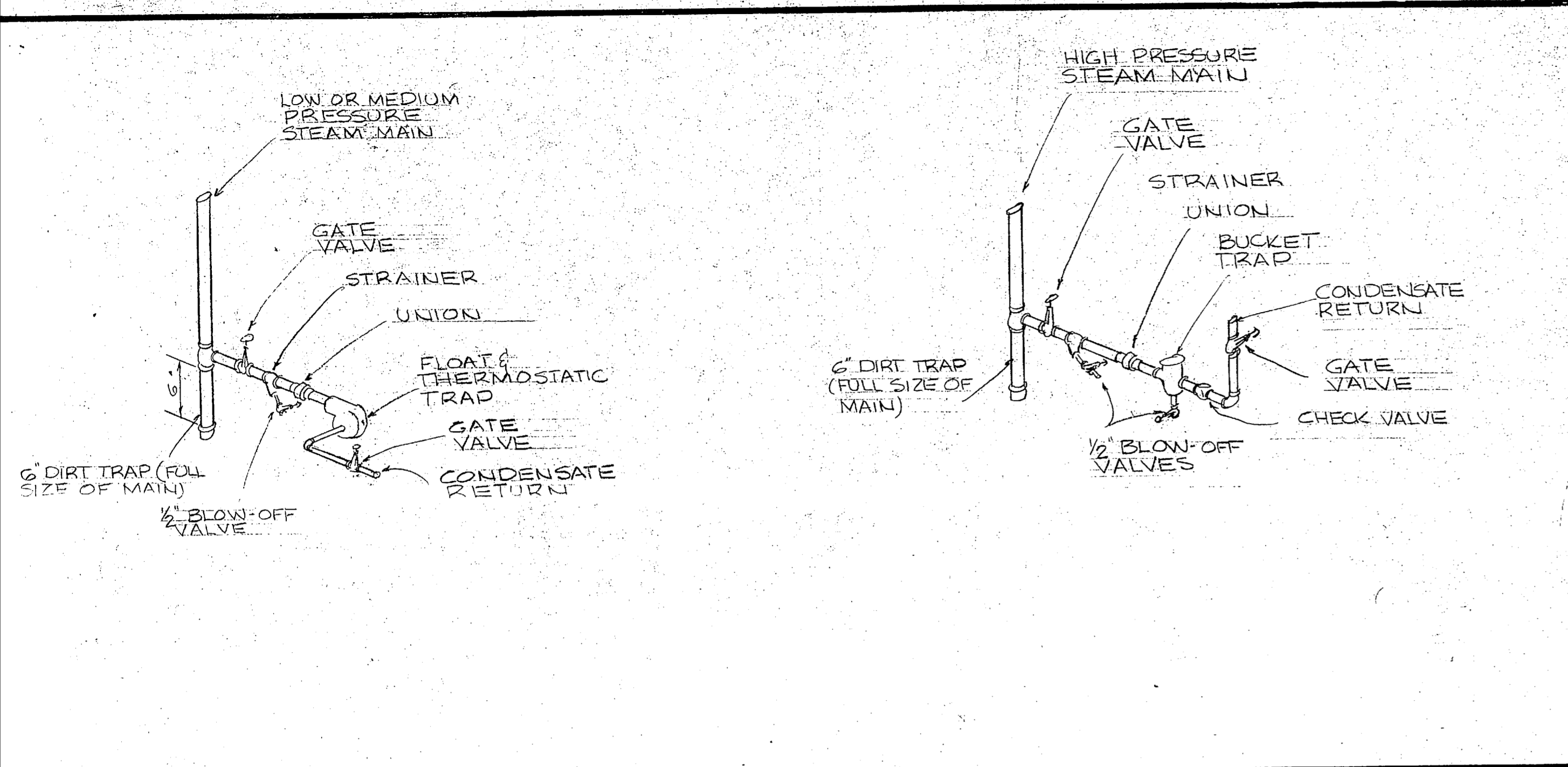
SATISFACTORY TO: [Signature]

DATE: 5/31/79



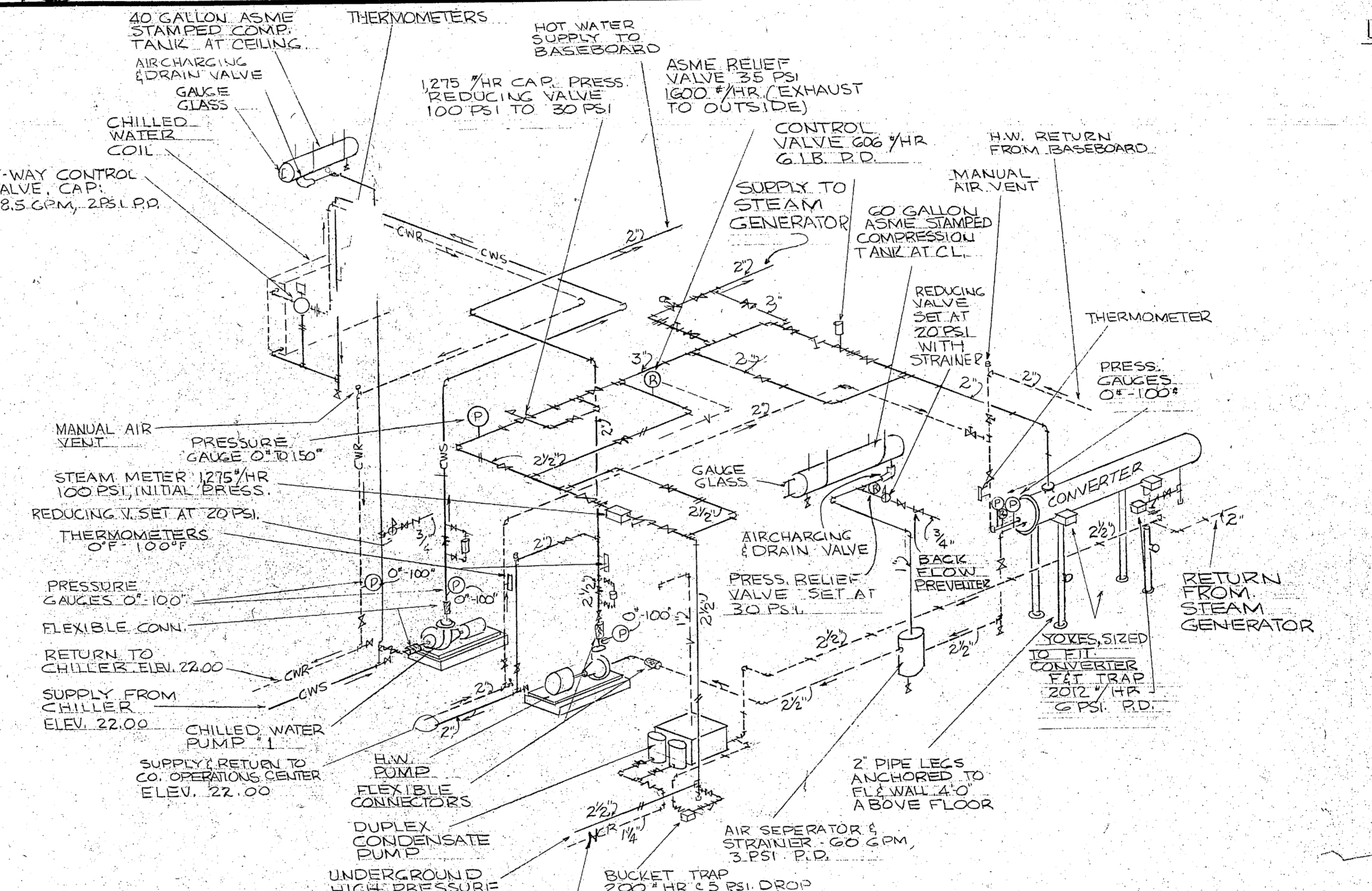
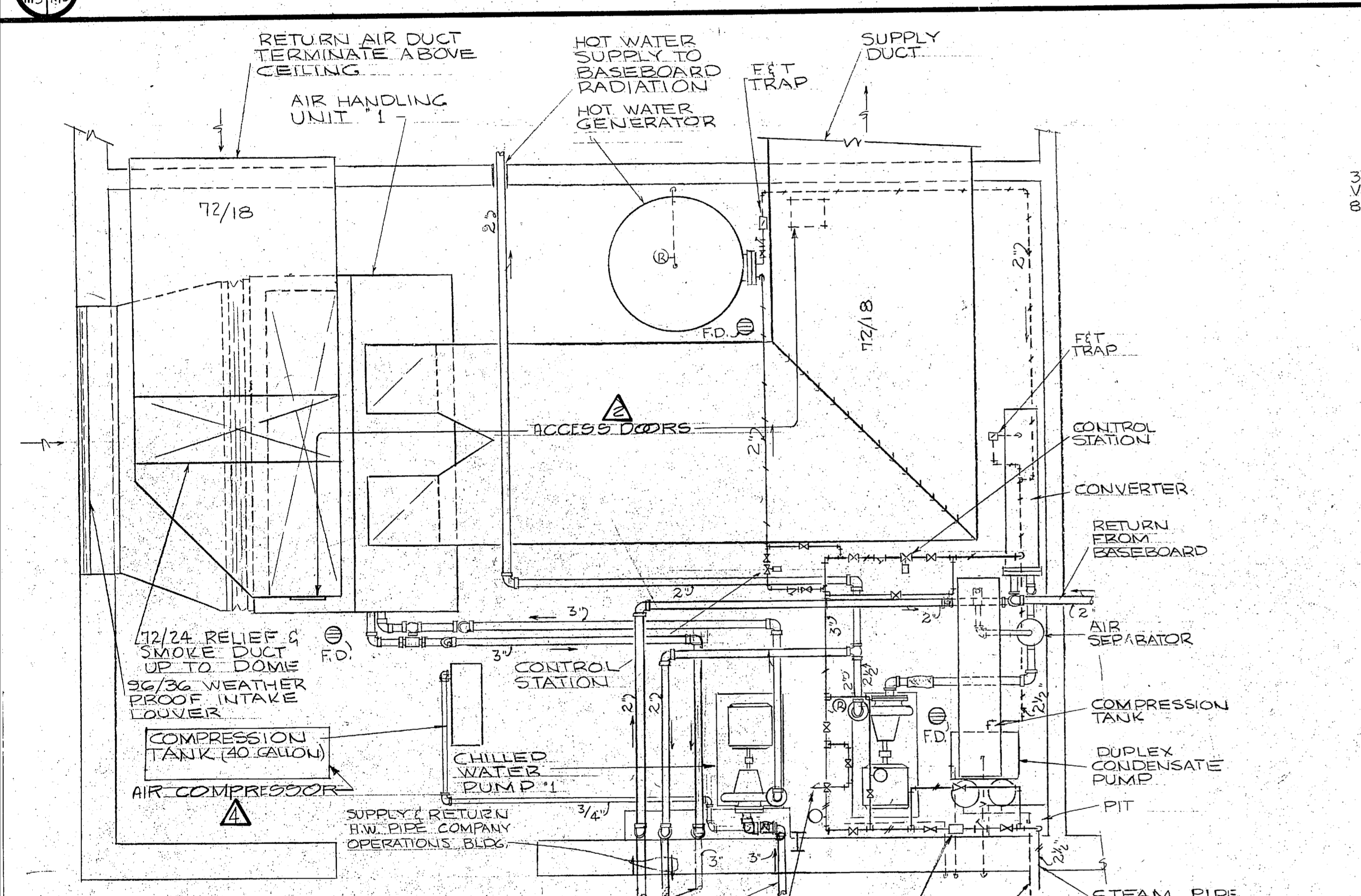


REVISIONS			
SYM	DESCRIPTION	DATE	APPROVED
1	REVISED MECH. RM. FIT LOCATION	2-28-51	HDT
2	INSTALLED ACCESS DOORS ON A.H. UNIT #1 & DUCT	2-28-51	HDT
3	TURND BAR JOISTS - 90°	2-28-51	HDT
4	INSTALLED AIR COMPRESSOR UNIT	2-28-51	HDT



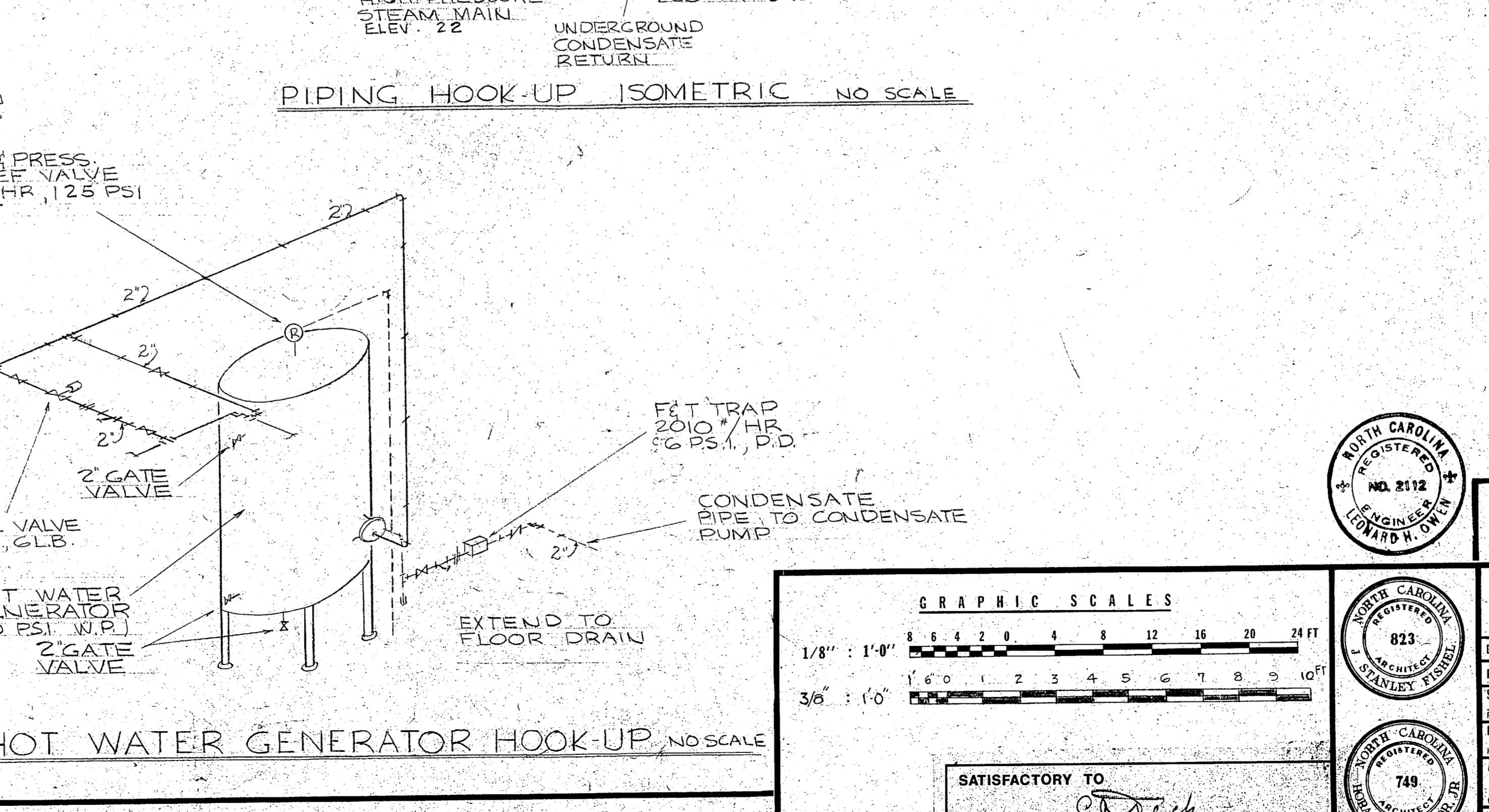
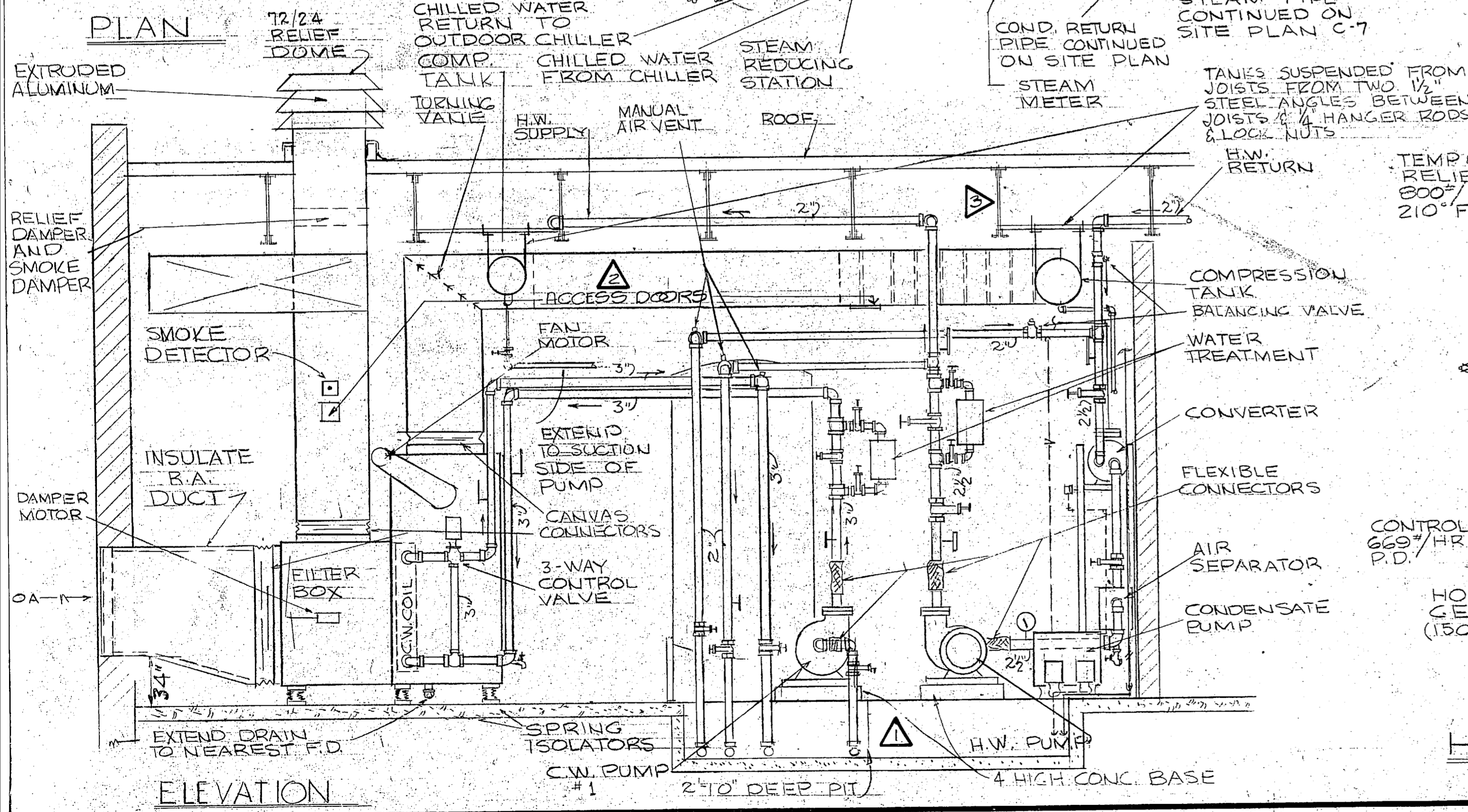
1 MECH 31 STEAM TRAP ASSEMBLIES NO SCALE

2 MECH 31 EXHAUST FAN DETAIL NO SCALE



**LEGEND**

- LOW PRESSURE STEAM PIPE (30 PSI)
- LOW PRESSURE CONDENSATE PIPE
- HIGH PRESSURE STEAM PIPE
- CR PUMPED CONDENSATE RETURN PIPE
- HOT WATER SUPPLY PIPE
- HOT WATER RETURN PIPE
- CWS CHILLED WATER SUPPLY PIPE
- CWR CHILLED WATER RETURN PIPE
- D DRAIN PIPE
- V VENT PIPE
- ⊖ THERMOSTAT (C-COOLING - H-HEATING)
- FLOW ARROW
- ⊘ GATE VALVE
- ⊙ GLOBE VALVE
- ⊚ CHECK VALVE
- ⊖⊖ FLOAT & THERMOSTATIC TRAP
- ⊖ PRESSURE GAUGE
- ⊖ THERMOMETER
- ⊖ PRESSURE REDUCING VALVE
- ⊖ 3-WAY CONTROL VALVE
- ⊖ RELIEF VALVE
- ⊖ UNION
- ⊖ BUCKET TRAP
- ⊖ STEAM CONTROL VALVE
- ⊖ SUPPLY DUCT
- ⊖ RETURN & EXHAUST DUCT
- ⊖ SPLITTER
- ⊖ TURNING VANE
- ⊖ 2-WAY MOTORIZED H.W. RADIATOR VALVE
- ⊖ SUPPLY DIFFUSER
- ⊖ RETURN AIR REGISTER
- ⊖ ADJUSTABLE SPLITTER
- ⊖ DIFFUSER NO
- ⊖ VARIABLE VOLUME BOX



3 MECH 31 MECHANICAL EQUIPMENT ROOM - BATTALION OPERATION CENTER 3/8" = 1'0"

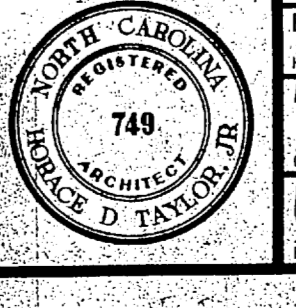
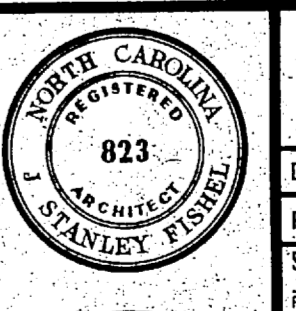
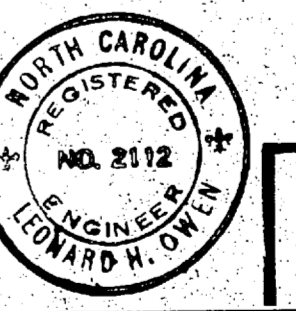
4 MECH 31 HOT WATER GENERATOR HOOK-UP NO SCALE

**GRAPHIC SCALES**

1/8" = 1'-0"    3/8" = 1'-0"

SATISFACTORY TO: *Drach*

DATE: 5/21/51



**RECORD DRAWING** FC 364 **M-3**

DATE: 6 JUNE 1951

FISHEL AND TAYLOR ARCHITECTS  
RALEIGH, NORTH CAROLINA

DEPARTMENT OF THE NAVY  
NAVAL FACILITIES ENGINEERING COMMAND  
ATLANTIC DIVISION  
NAVAL STATION NORFOLK, VIRGINIA

MARINE CORPS BASE - FRENCH CREEK AREA  
CAMP LEJEUNE - NORTH CAROLINA

**OPERATIONS AND MAINTENANCE FACILITY**  
COC MECHANICAL ROOM - DETAILS

DES. LO. DR. LO. CHN. LO.

PROJ. MGR. HT. CH. ENGR. LO.

SUBMITTED BY: *Stanley H. Fisher*

DATE: 5-21-51

APPROVED: *Stanley H. Fisher*

DATE: 5-21-51

SCALE AS NOTED: SPKG 05-77-7599

NAVIFAC DRAWING NO: 4048095

CONSTR. CONTR. NO: N62470-77-B-7599

SHEET 37 OF 45

REF. DWG. NO: 148095

