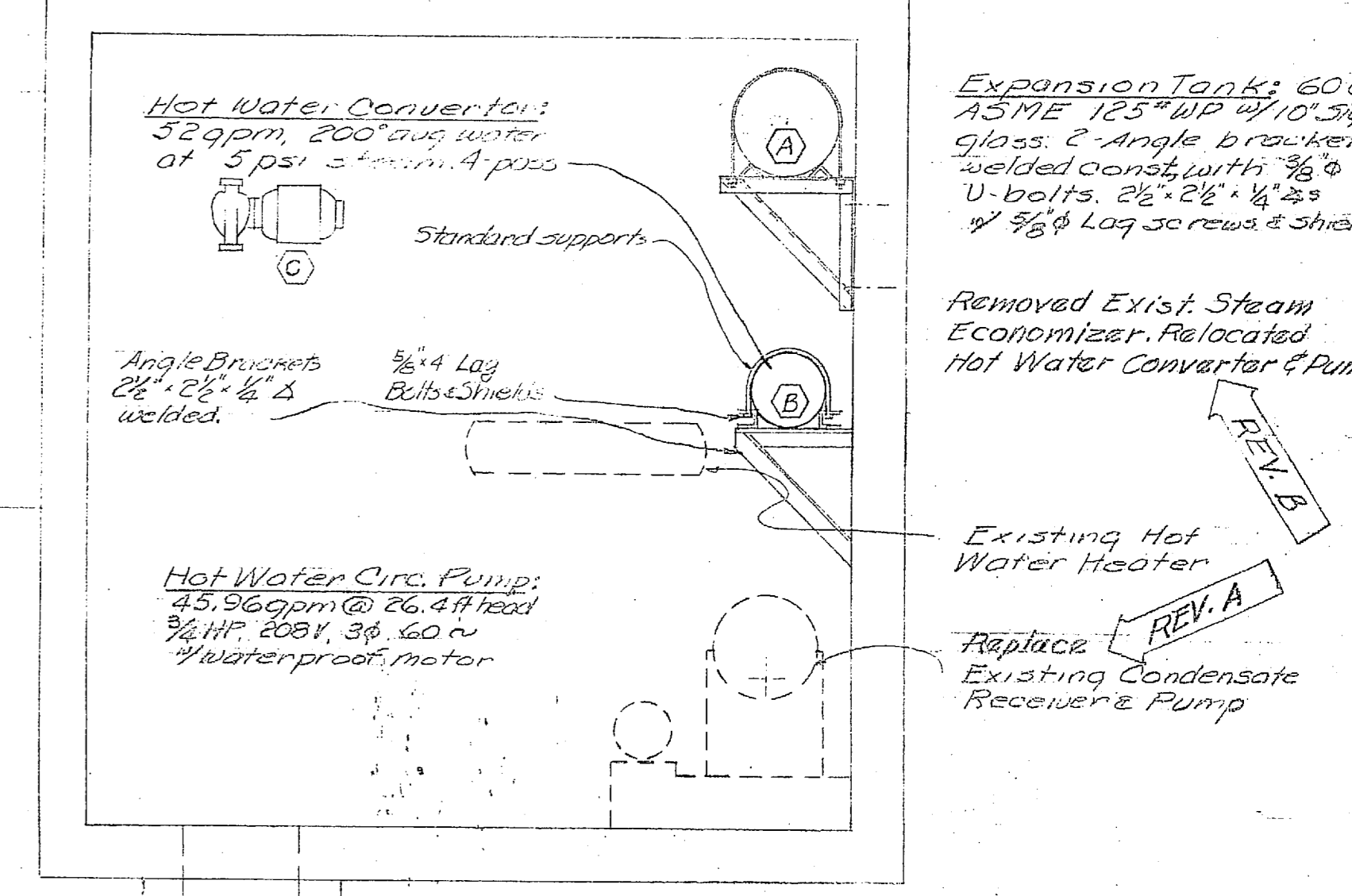
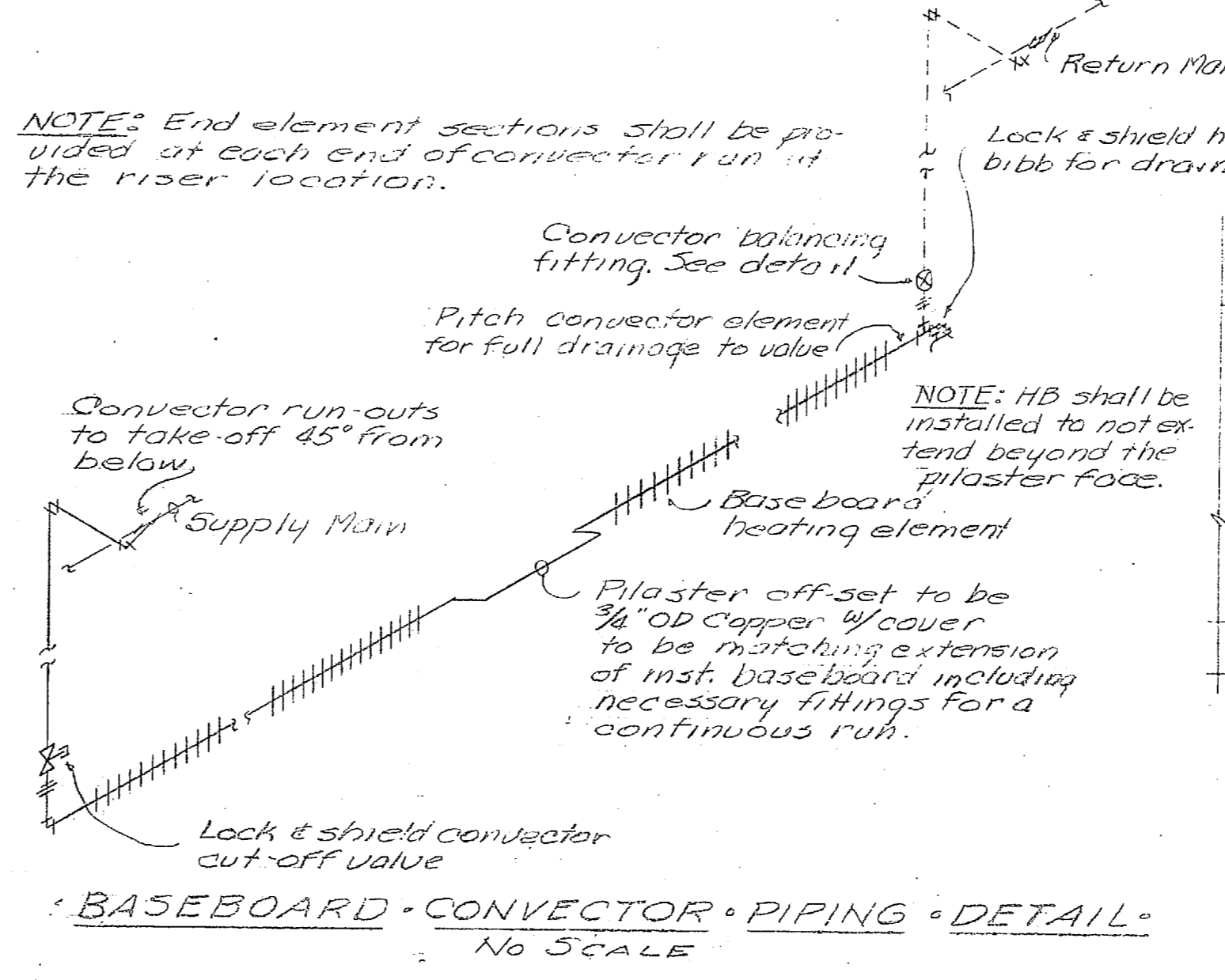
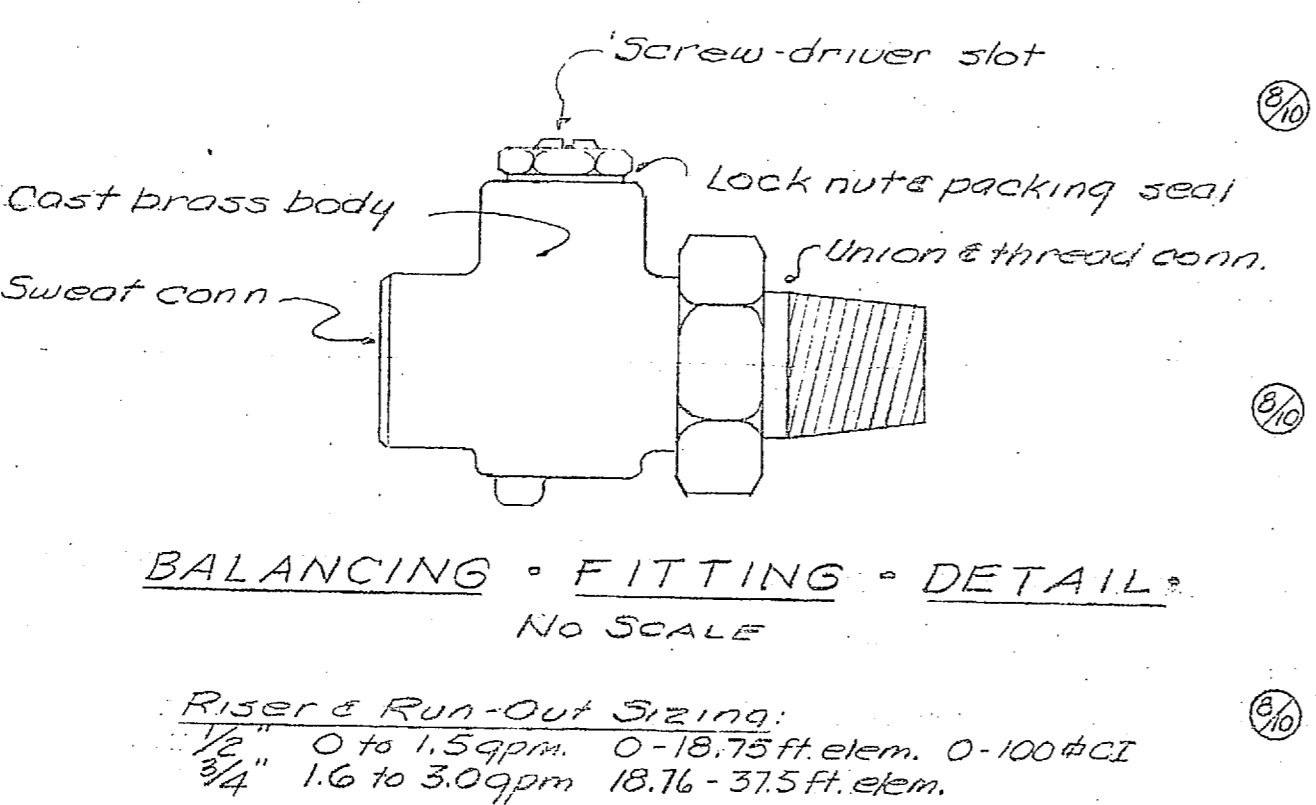
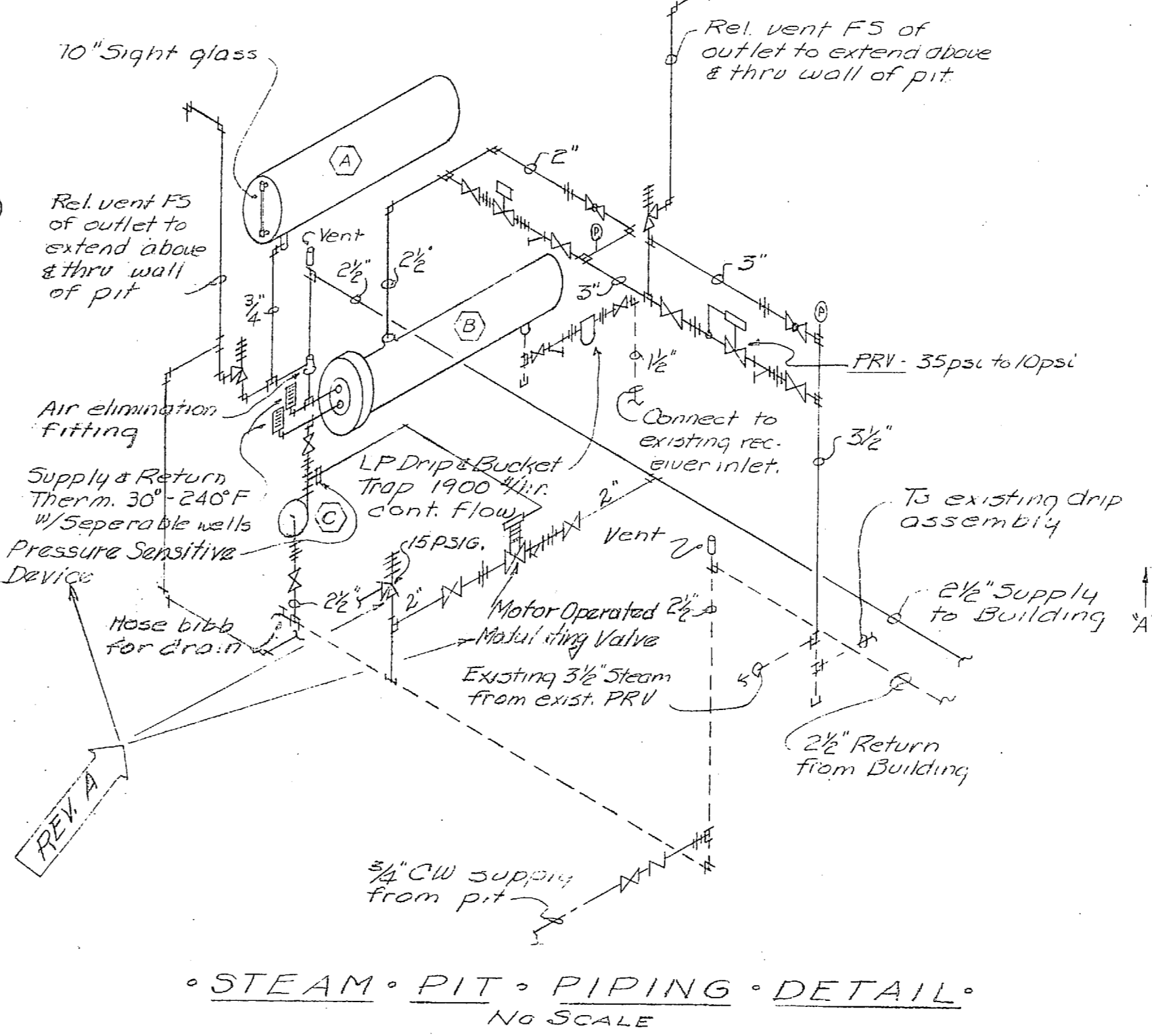
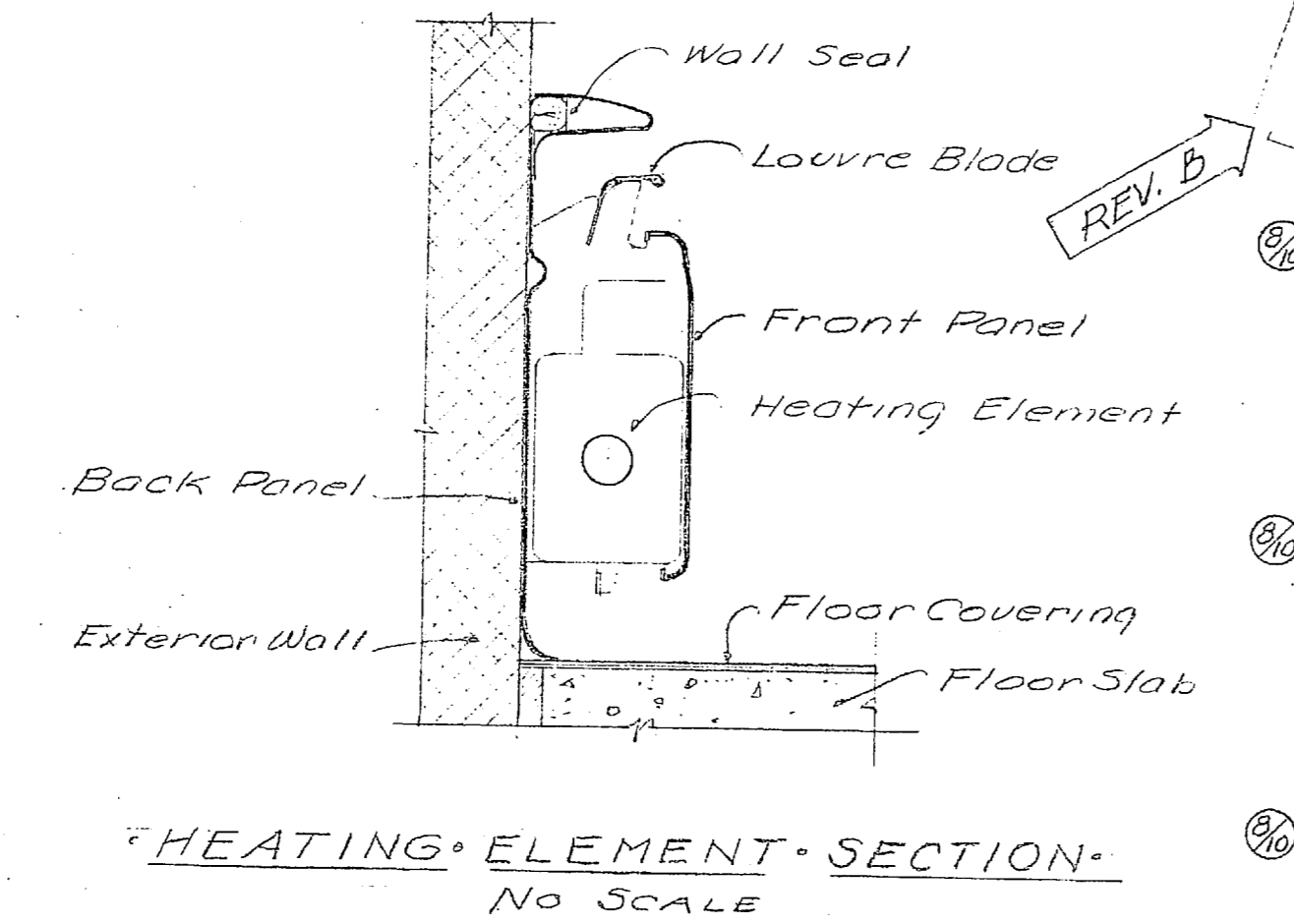
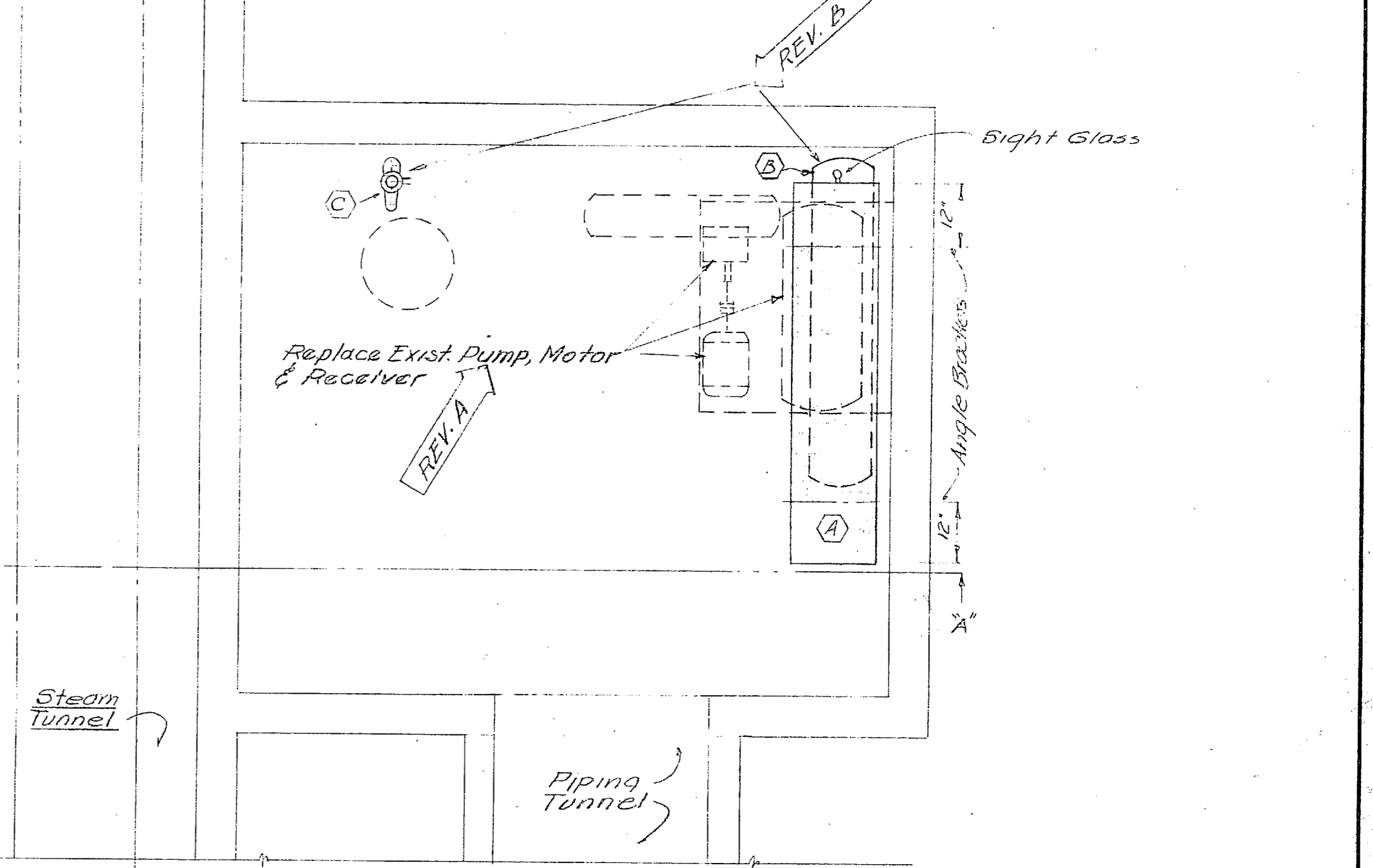
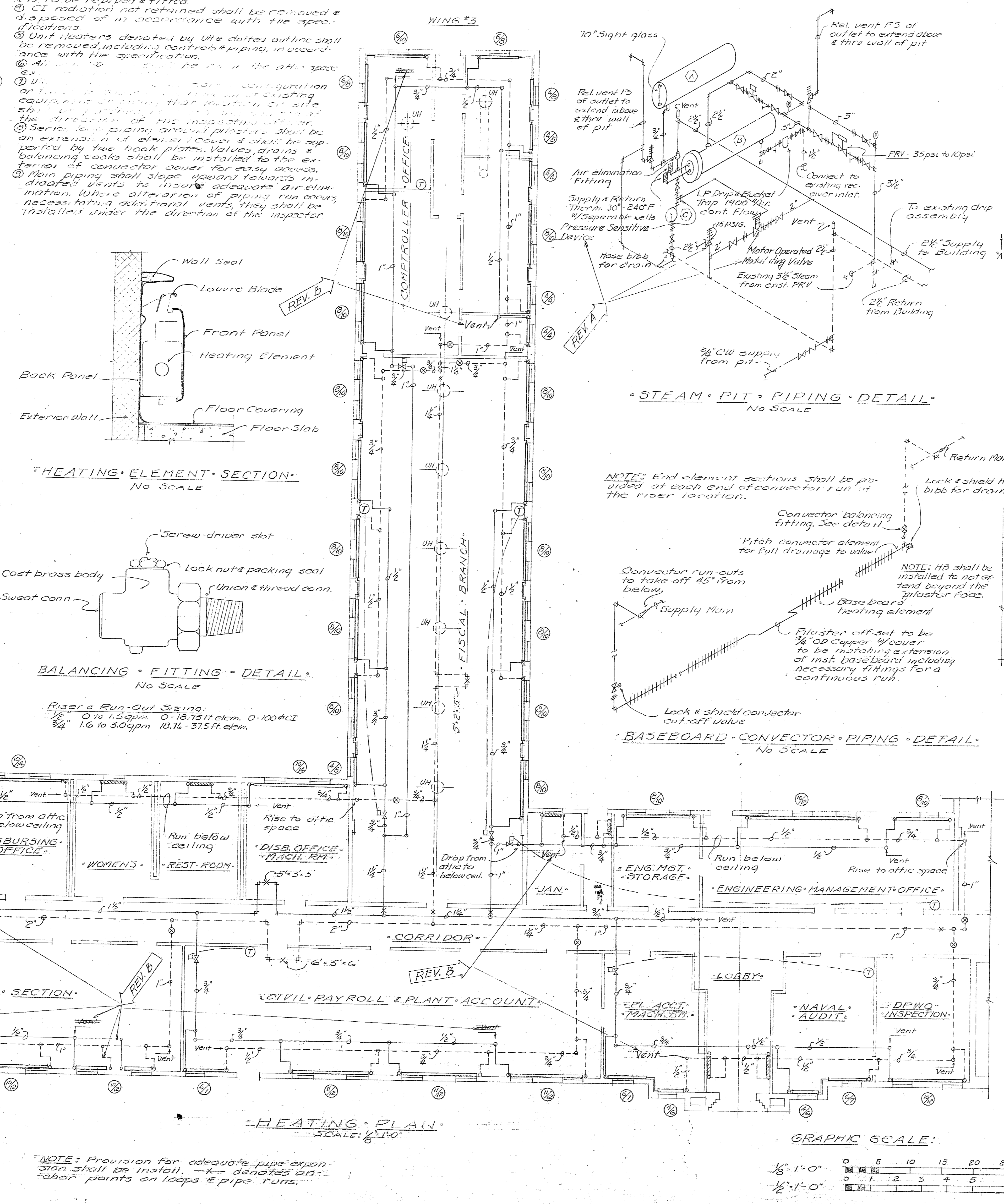
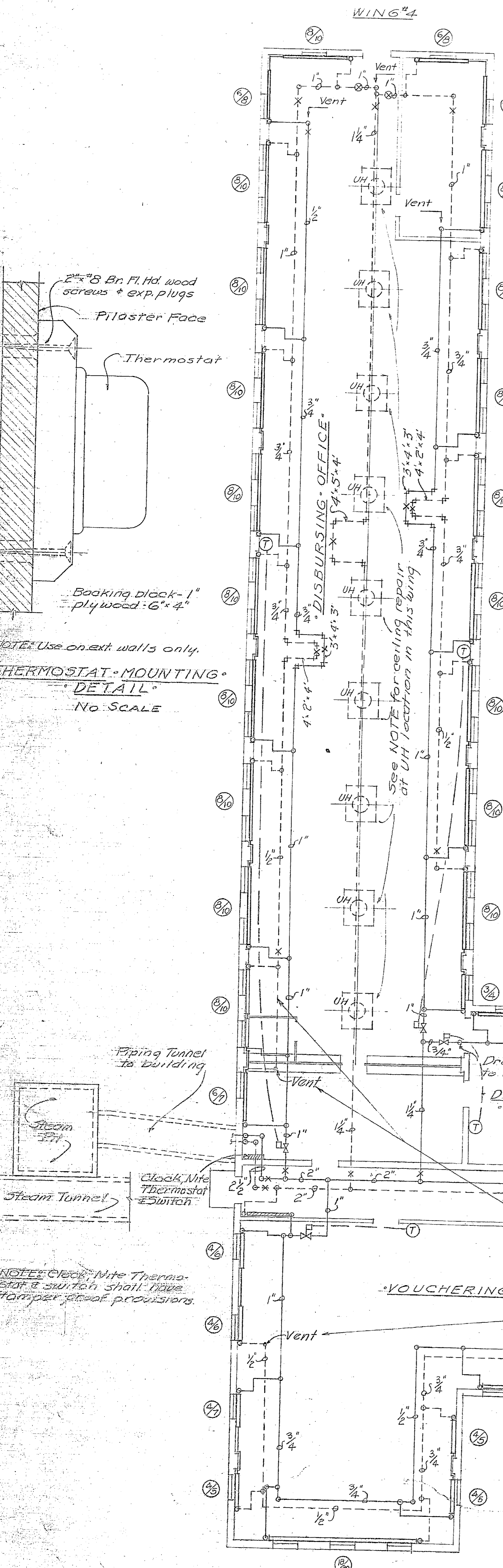


NOTES: Dotted rectangles at UH locations in Wing #4, #5, are UH enclosures that shall be framed and finished flush to the surrounding ceiling. Materials framing finish shall be equal to the adjacent surface. Painting shall match the adj. surface.

GENERAL NOTES:
 1. Baseboard elements shall be copper-aluminum with rated emission of minimum of 800 Btu/ft with 200 deg. water.
 2. Symbol (1) denotes the length of active element in upper left & cover length in lower right.
 3. Symbol (2) denotes cast iron radiation that exists & is to be repaired & fitted.
 4. CI radiation not retained shall be removed & disposed of in accordance with the specifications.
 5. Unit heaters denoted by UH & dotted outline shall be removed including controls & piping, in accordance with the specification.
 6. All piping shall be in the att. space, ex. ...
 7. UH configuration on this plan showing that location of existing equipment shall be shown on this plan at the direction of the inspecting officer.
 8. Series loop piping around perimeter shall be an extension of element cover & shall be supported by two hook plates. Valves, drains & balancing cocks shall be installed to the exterior of connector cover for easy access.
 9. Main piping shall slope upward towards individual vents to insure adequate air elimination. Where alteration of piping run occurs necessitating additional vents, they shall be installed under the direction of the inspecting officer.

HEATING DESIGN DATA:
 Outside Temp. -15°
 Building Heat Loss 439477 Btu/hr
 Inside Temp. - 72°

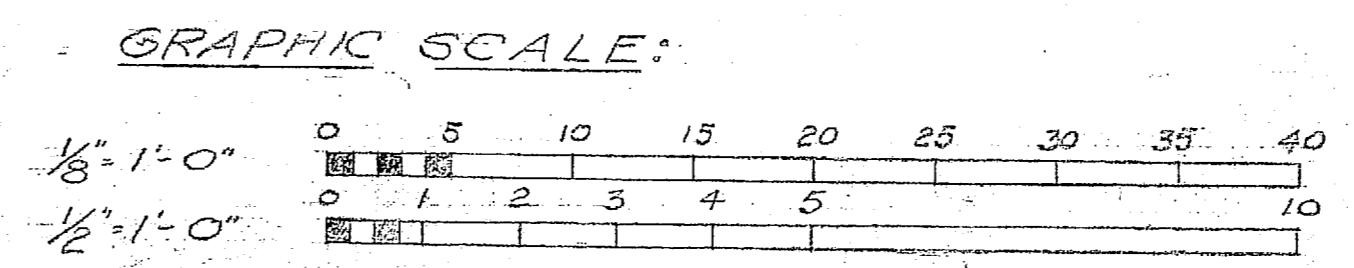
NOTE: Piping, fittings, insulation, equipment, hangers & other items not integral to the operation of the hot water heating system & the domestic water heating system in the areas covered by this drawing shall be removed & disposed of at the direction & approval of the inspecting officer.



LEGEND

LP	Steam, Low Pressure	Valve, Globe
LR	Return, Low Pressure	Union
	Water, Cold	Strainer
	Valve, Steam, Motor Operated	Valve, Check
	Valve, Pressure Reducing	Faucet
	Valve, Gate	Trap, Bucket
	Valve, Relief	Thermostat
	Thermometer	Gauge, Pressure
	Water, Hot, Heating, Supply	Water, Hot, Heating, Return

DES	DRWN	TR	CHK	SUPV	DES DIR	AS BUILT REVISION REVISED IN ACCORDANCE WITH CHANGE, SCHEDULE 'A'
P W DRAWING NO. 11236						MARINE CORPS BASE CAMP LEJEUNE, N. C.
REPLACEMENT HEATING SYSTEM SECOND PORTION BUILDING 1005						HEATING-PLAN & DETAIL
APPROVED [Signature] DATE 17 July 1953						FOR PUBLIC WORKS OFFICER
SATISFACTORY TO THE QUARTERMASTER GENERAL OF THE MARINE CORPS						APPROVED FOR BUREAU OF YARDS & DOCKS [Signature] DATE 17 July 1953
DATE 17 July 1953						SCALE GRAPHIC SPEC 7536/58 SHEET 2 OF 3 Nby 7536 Y & D DRAWING NO. 765336



NOTE: Provision for adequate pipe expansion shall be install. X denotes an labor points on loops & pipe runs.

1005