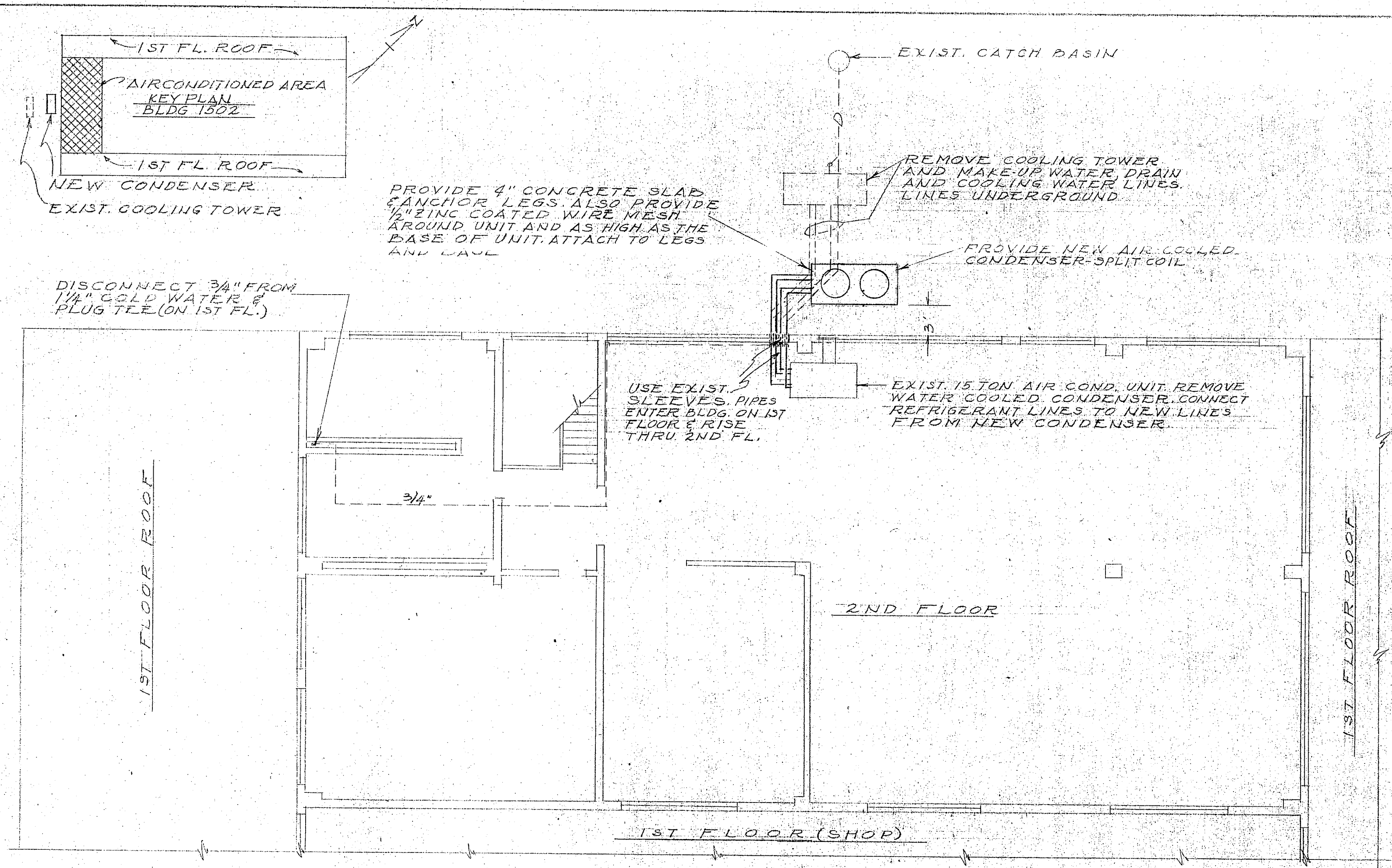
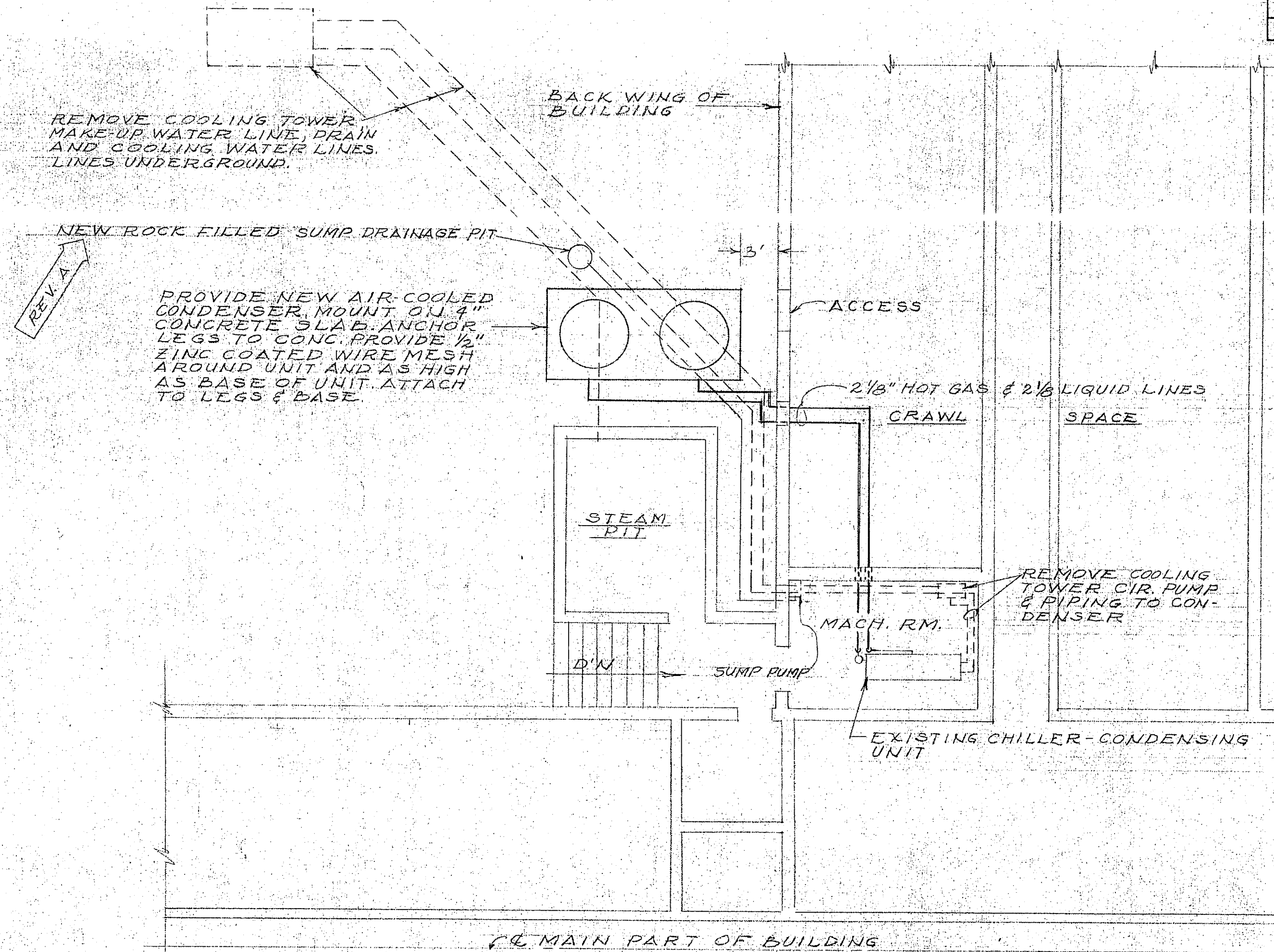


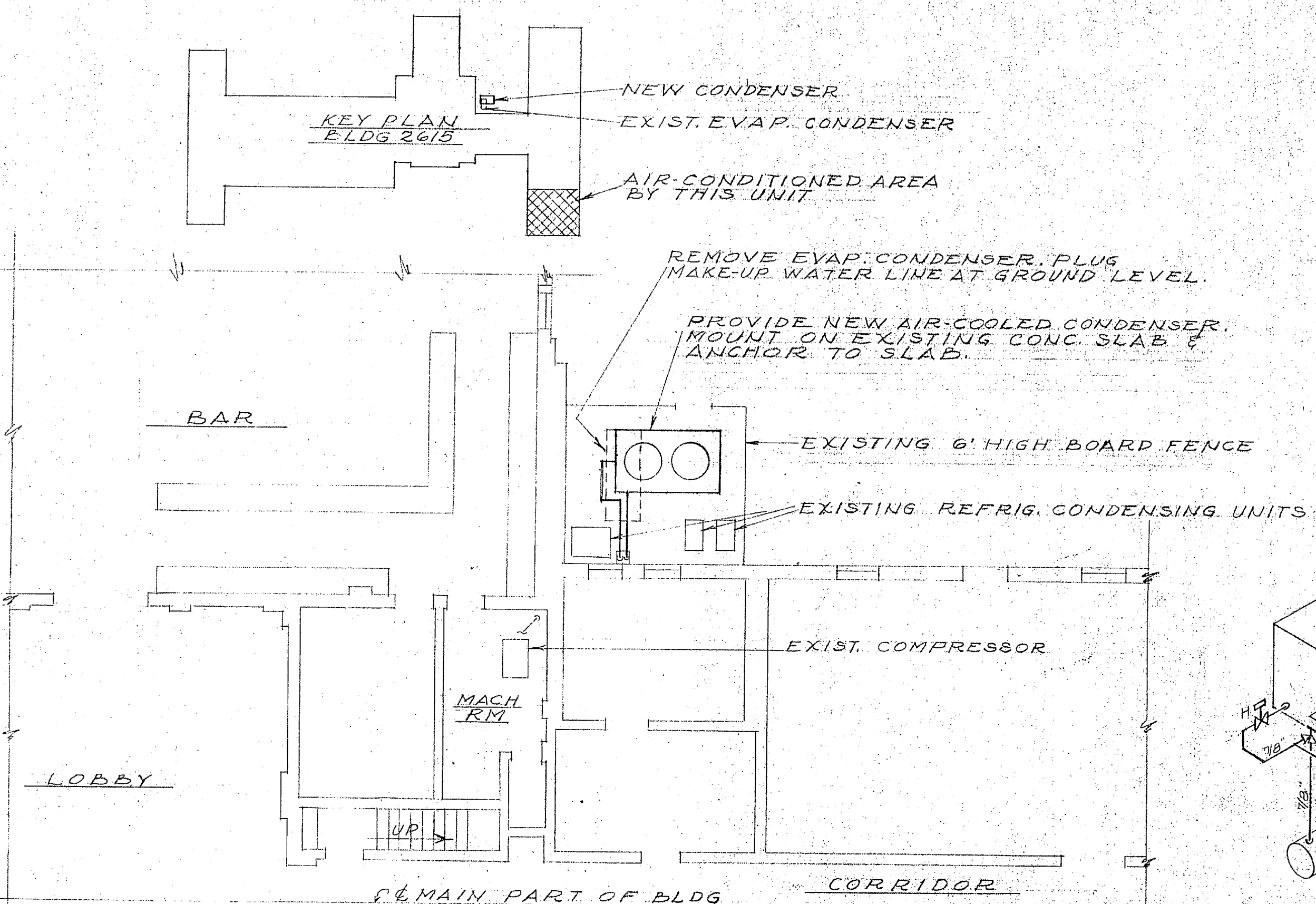
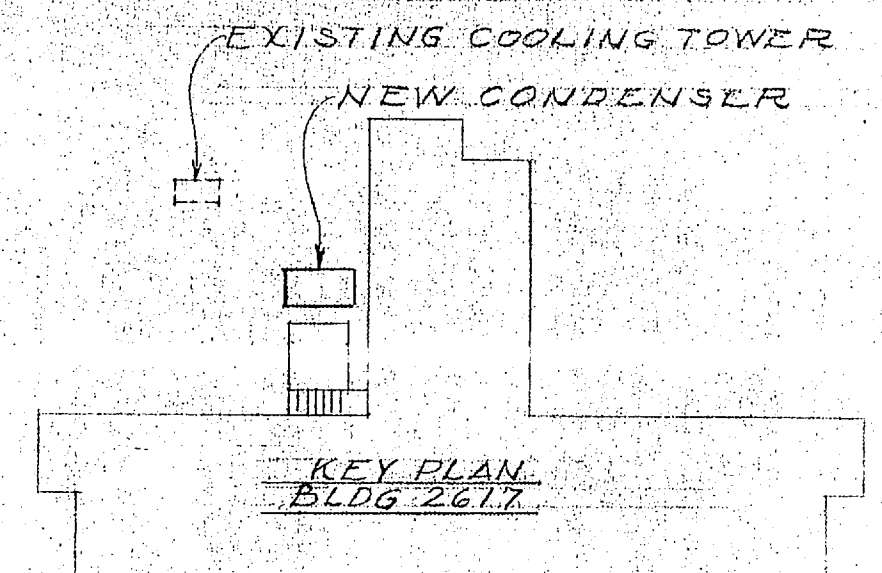
| REVISIONS | | | |
|-----------|---------------|---------|----------|
| SYM | DESCRIPTION | DATE | APPROVED |
| A | AS BUILT REV. | 4/28/71 | CP/P |



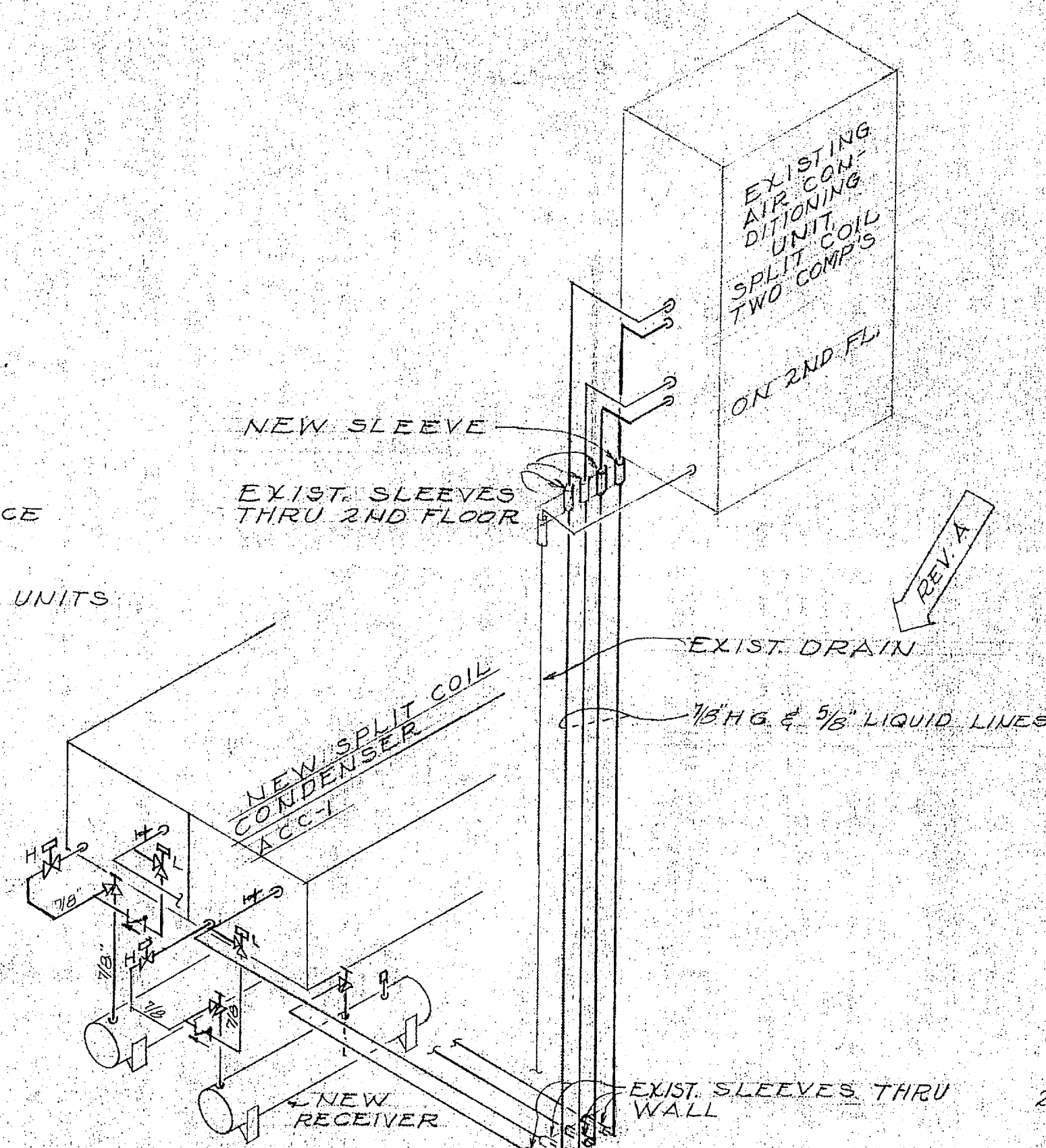
PLAN, MEZZANINE FLOOR BLDG 1502
SCALE: 1/8"=1'-0"



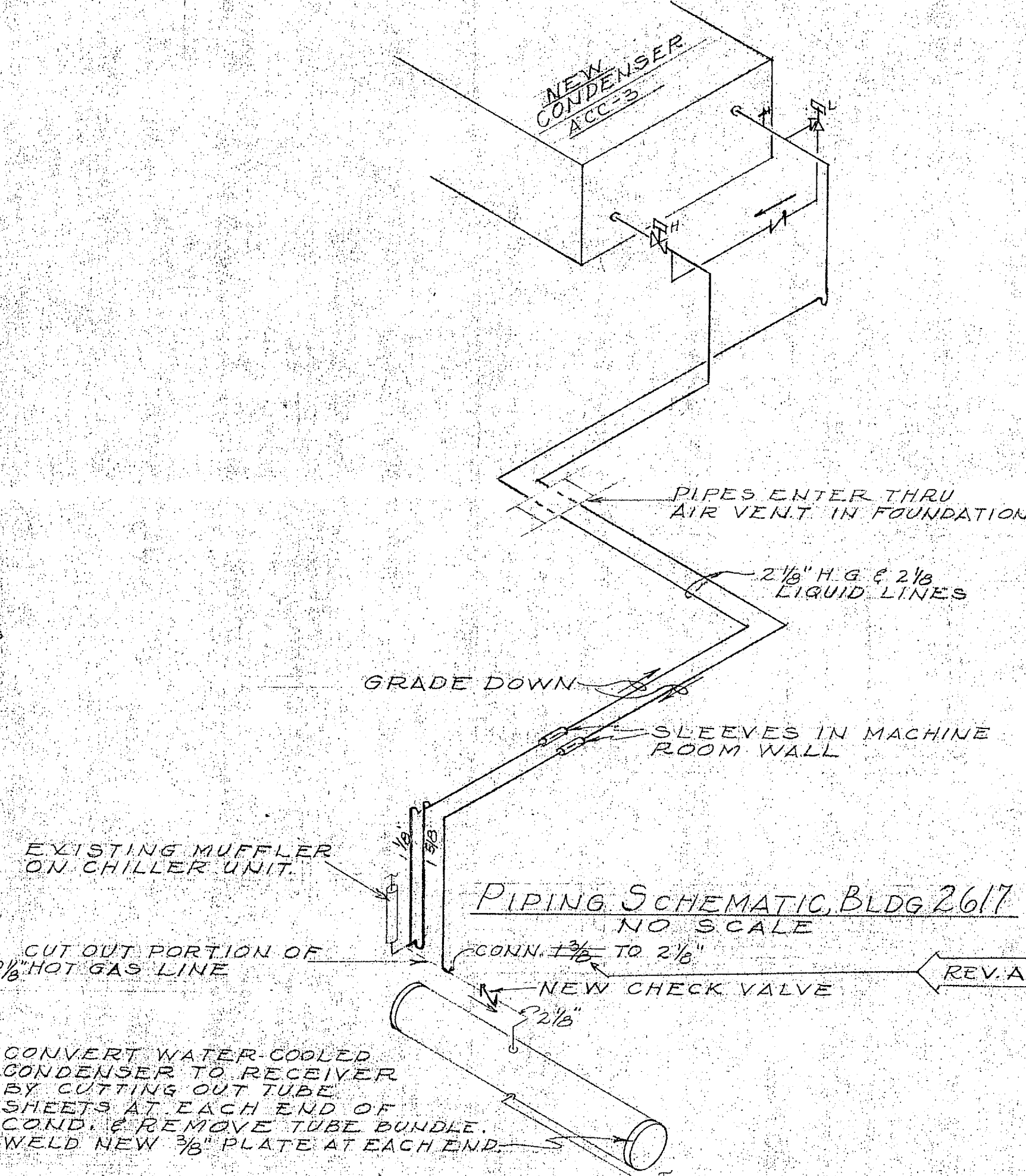
PART FOUNDATION PLAN, BLDG 2617
SCALE: 1/8"=1'-0"



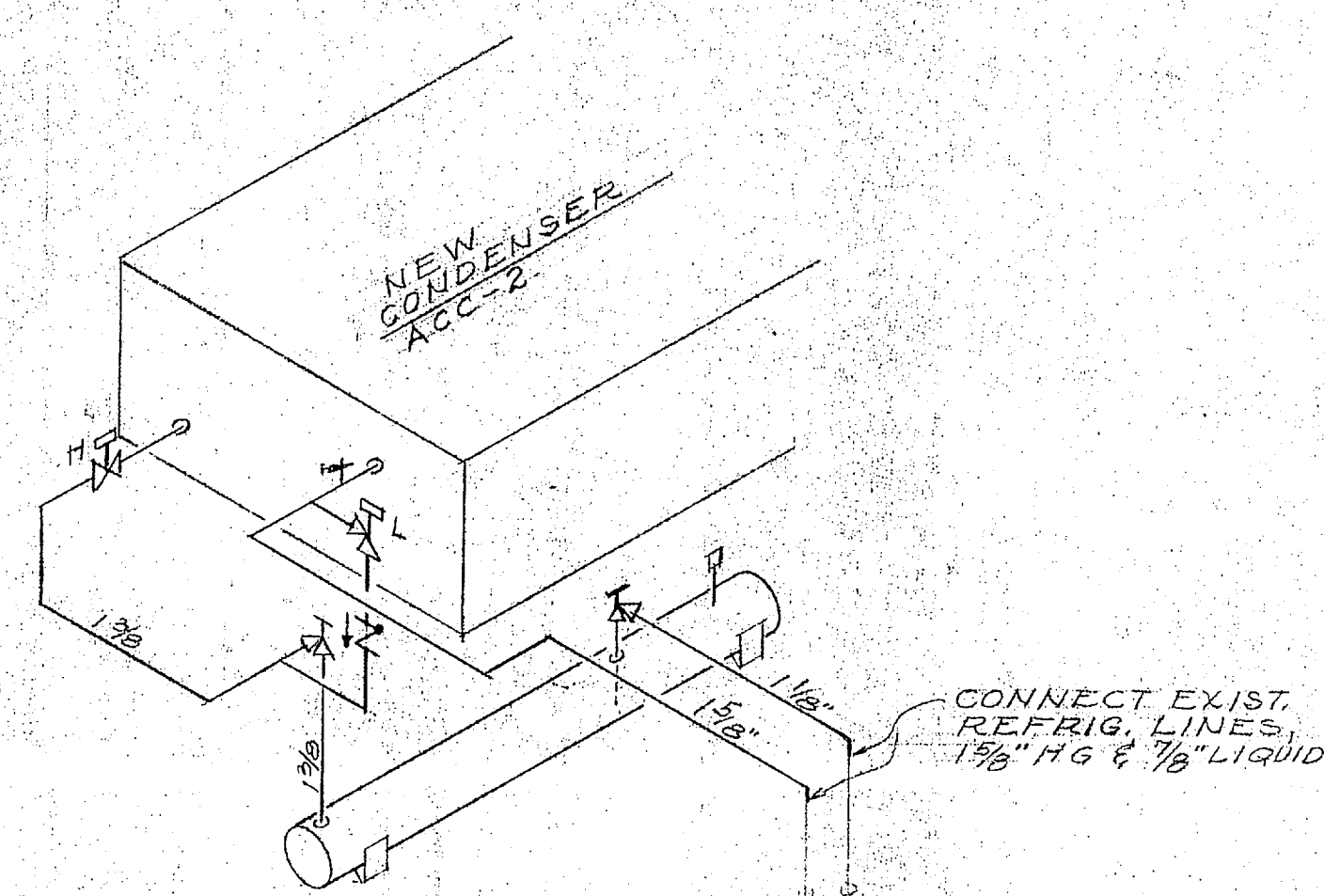
PART PLAN, BUILDING 2615
SCALE: 1/8"=1'-0"



PIPING SCHEMATIC, BLDG 1502
NO SCALE



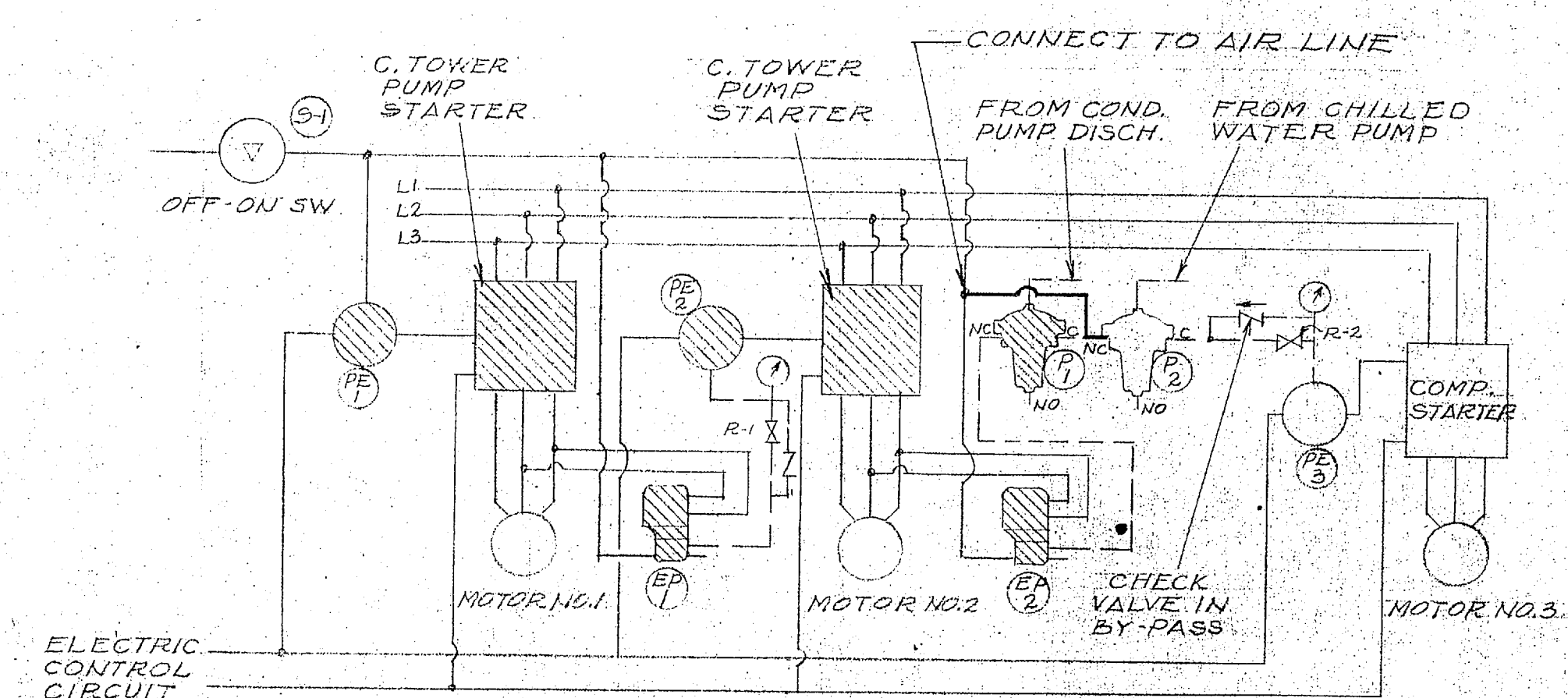
PIPING SCHEMATIC, BLDG 2617
NO SCALE



PIPING SCHEMATIC, BLDG 2615
NO SCALE

LEGEND

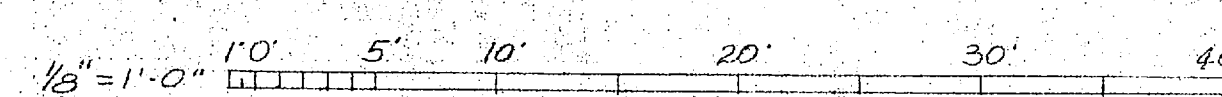
- REFRIGERANT GLOBE VALVE
- ANGLE GLOBE VALVE
- CHECK VALVE
- CONTROL VALVE, OPEN ON HIGH PRESS.
- CONTROL VALVE, OPEN ON LOW PRESS.
- PURGE VALVE
- PRESS. RELIEF VALVE, MOUNT ON RECEIVER
- ELECTRIC OR PNEUMATIC CONTROLS TO BE REMOVED



ALTERATIONS TO COOLING TOWER CONTROLS, BLDG 2617

| NEW AIR-COOLED CONDENSERS | | | | | | | | | | | |
|---------------------------|----------|---------------|-----------------------------|----------|-----------|--------------|-----------------------|----------------------|-----------------|------|------|
| COND. NO. | LOCATION | CAP. AT 150 F | TOT. HEAT EXCH. CAP. BTU/HR | TEMP. IN | TEMP. OUT | FAN MOTOR HP | TOT. MAX. FAN VOLTAGE | RECEIVER CAP. CU FT. | REF. COND. UNIT | EA. | R-22 |
| ACC-1 | 1502 | 150,000 | 225,000 | 95 | 115 | 40 | 2.5 | 208/5/60 | 2-1.71 | EA. | R-22 |
| ACC-2 | 2615 | 216,000 | 272,000 | 95 | 115 | 40 | 2.1 | 110/5/60 | 3.18 | R-12 | R-22 |
| ACC-3 | 2617 | 600,000 | 750,000 | 95 | 115 | 40 | 2.3 | 208/5/60 | 3.18 | R-22 | R-22 |

* SPLIT COIL CONDENSER, 112,500 BTU/HR, EACH CIRCUIT.



| | | | |
|---|---------------------|--|--------------------|
| PUBLIC WORKS DEPT. MARINE CORPS BASE CAMP LEJEUNE, N.C. | | DEPARTMENT OF THE NAVY NAVAL FACILITIES ENGINEERING COMMAND ATLANTIC DIVISION MARINE CORPS BASE, CAMP LEJEUNE, N.C. | |
| DEV. BY: [Signature] | DR. BY: [Signature] | CHK. BY: [Signature] | DATE: [Date] |
| MECHANICAL REPAIRS, VARIOUS BLDGS. | | | |
| PLANS & DETAILS: AIR CONDITIONING BLDG. 1502, 2615 & 2617 | | | |
| COMMAN. GENERAL | SIZE | CODE DEPT. NO. | NARSIC DRAWING NO. |
| EFD | RVD | F 80091 | 1243990 |
| APPROVED: [Signature] | DATE: [Date] | CONTR. CONTR. NO. N62470-70-B-0489 | |
| SCALE: GRAPHIC | SPEC: G5-70-0489 | SHEET 2 OF 3 | |

ART 15.