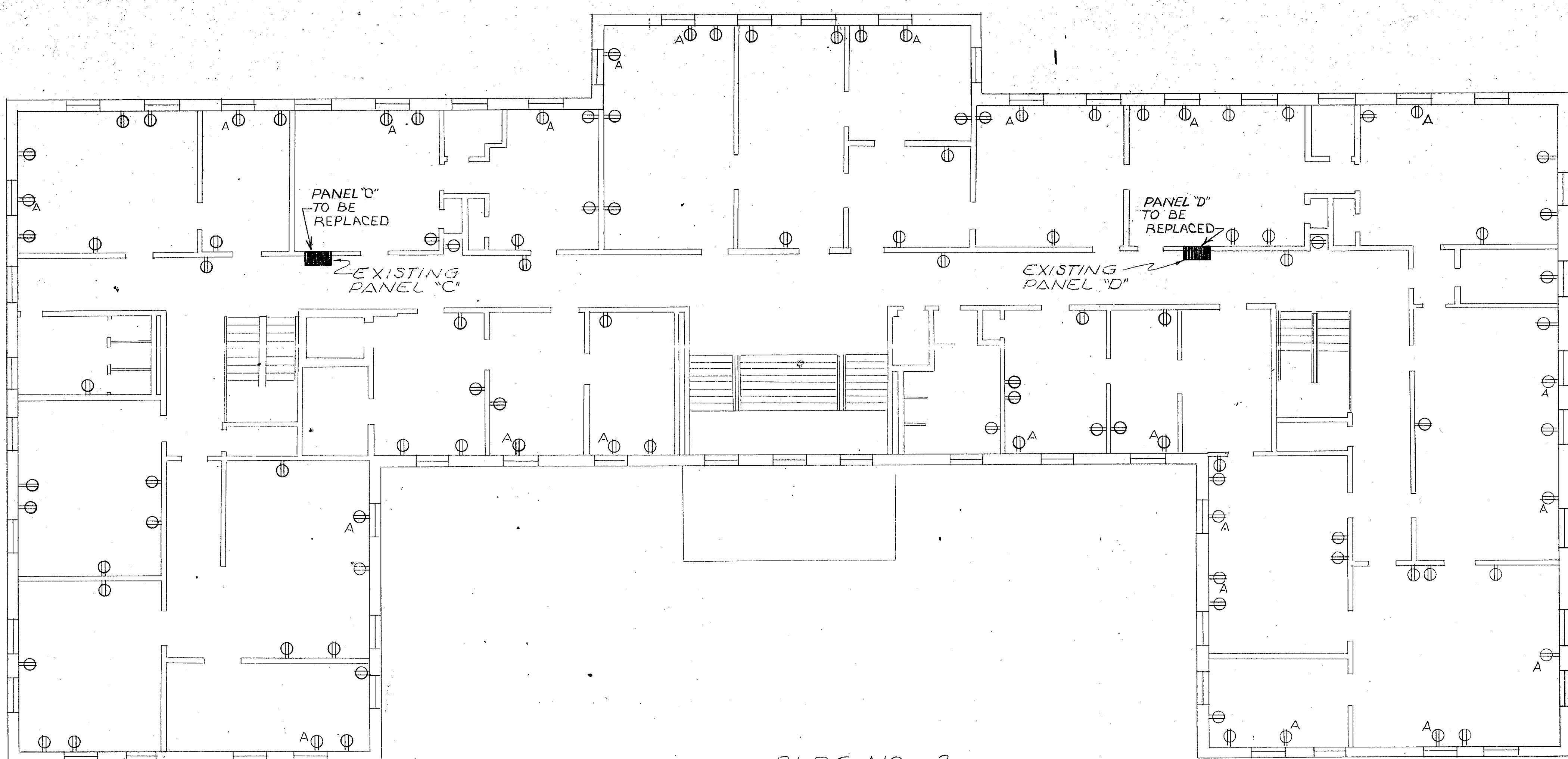


REVISIONS			
SYM	DESCRIPTION	DATE	APPROVED

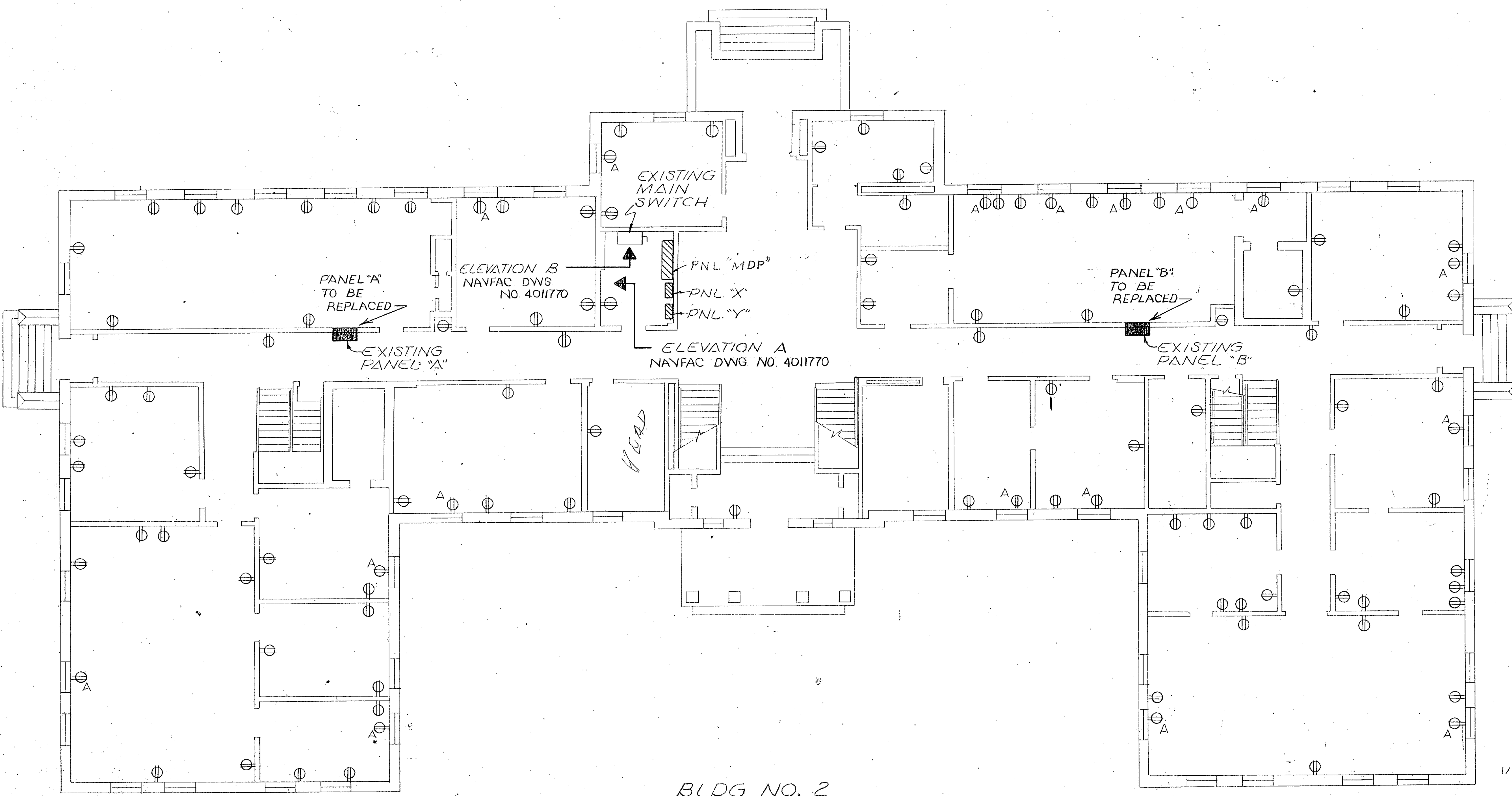


BLDG NO. 2
SECOND FLOOR PLAN
SCALE: 1/8" = 1'-0"

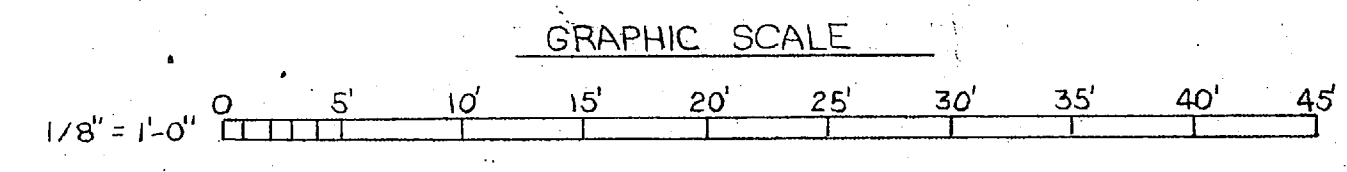
- LEGEND**
- ⊙ EXISTING DUPLEX RECEPTACLE, 20 AMP, 120 VOLT FLUSH MOUNTED
 - ⊙△ SAME AS ABOVE SURFACE MOUNTED (AIR CONDITION)
 - EXISTING SERVICE ENTRANCE SWITCH
 - ▨ EXISTING PANEL TO BE REPLACED, SEE NOTE NO. 1 THIS SHEET
 - ▩ NEW PANELS SEE SCHEDULE NAVFAC DWG NO. 401170

NOTES

1. REMOVE EXISTING PANELS A, B, C & D. THESE PANELS ARE 100 AMP, 24 CKT, FUSED, 3Ø, 4 WIRE, 120/208 VOLT PANELS. PROVIDE 4 NEW PANELS TO REPLACE THESE PANELS. THE NEW PANELS SHALL BE 125 AMP, 30 CKT, 120/208 VOLT, 3Ø, 4W, W/ 3Ø SINGLE POLE, 25 AMP, CKT BKRS. RECONNECT ALL CKTS.
2. REMOVE ALL EXISTING RECEPTACLES & PROVIDE NEW GROUNDING TYPE RECEPTACLES. PROVIDE ALL NEW RECEPTACLES W/ A #12 COPPER TW DISTAL GROUND DISTAL TO OUT-LET BOX. ON ALL AIR CONDITIONING RECEPTACLES PROVIDE A #12 COPPER TW GROUNDING CONDUCTOR & RUN BACK TO PANEL.
3. CONDUIT AND WIRE MAY BE RUN IN ATTIC AND IN CRAWL SPACE UNDER BLDG.
4. THIS SHEET PERTAINS TO BLDG. NO. 2 ONLY.

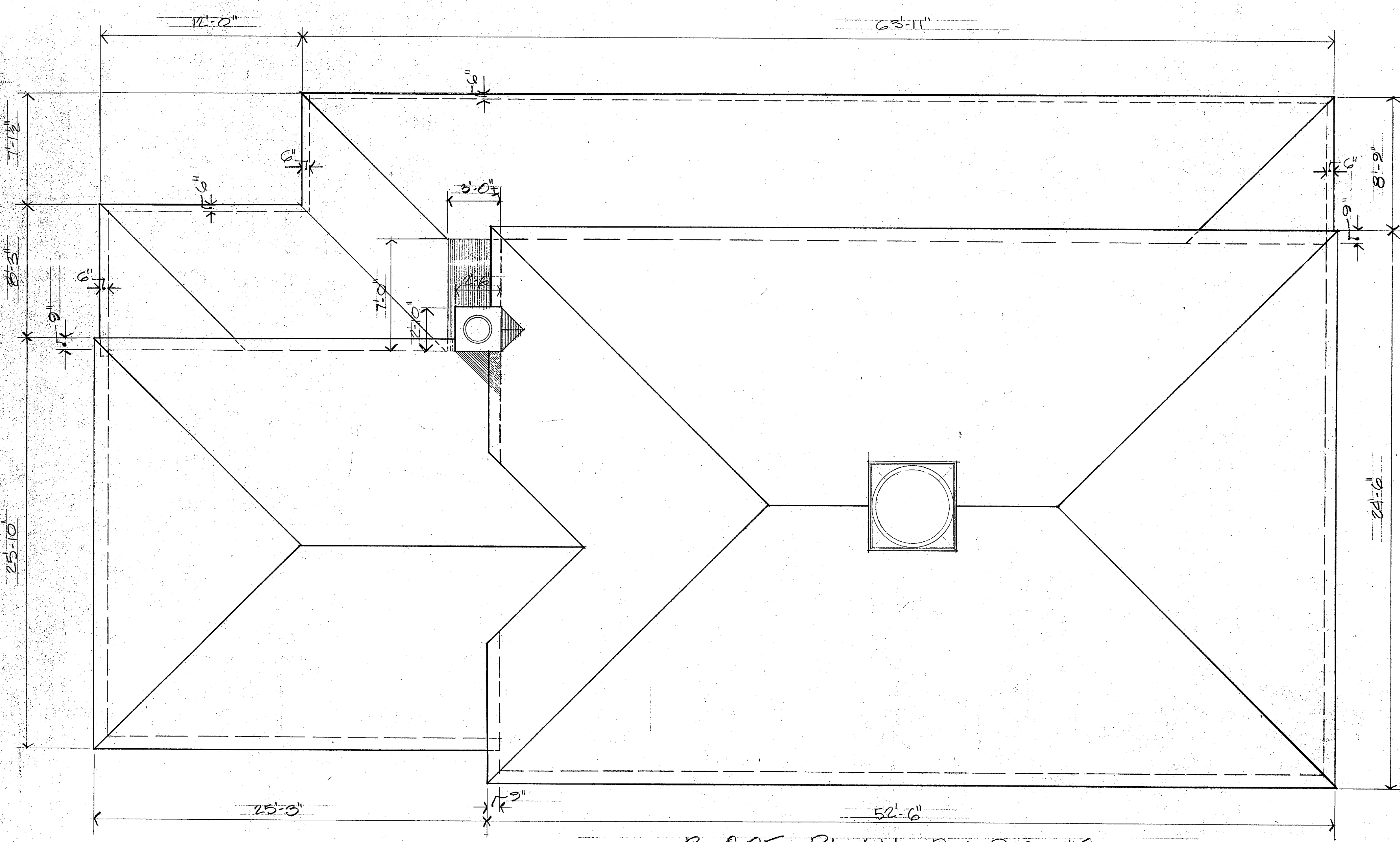


BLDG NO. 2
FIRST FLOOR PLAN
SCALE: 1/8" = 1'-0"

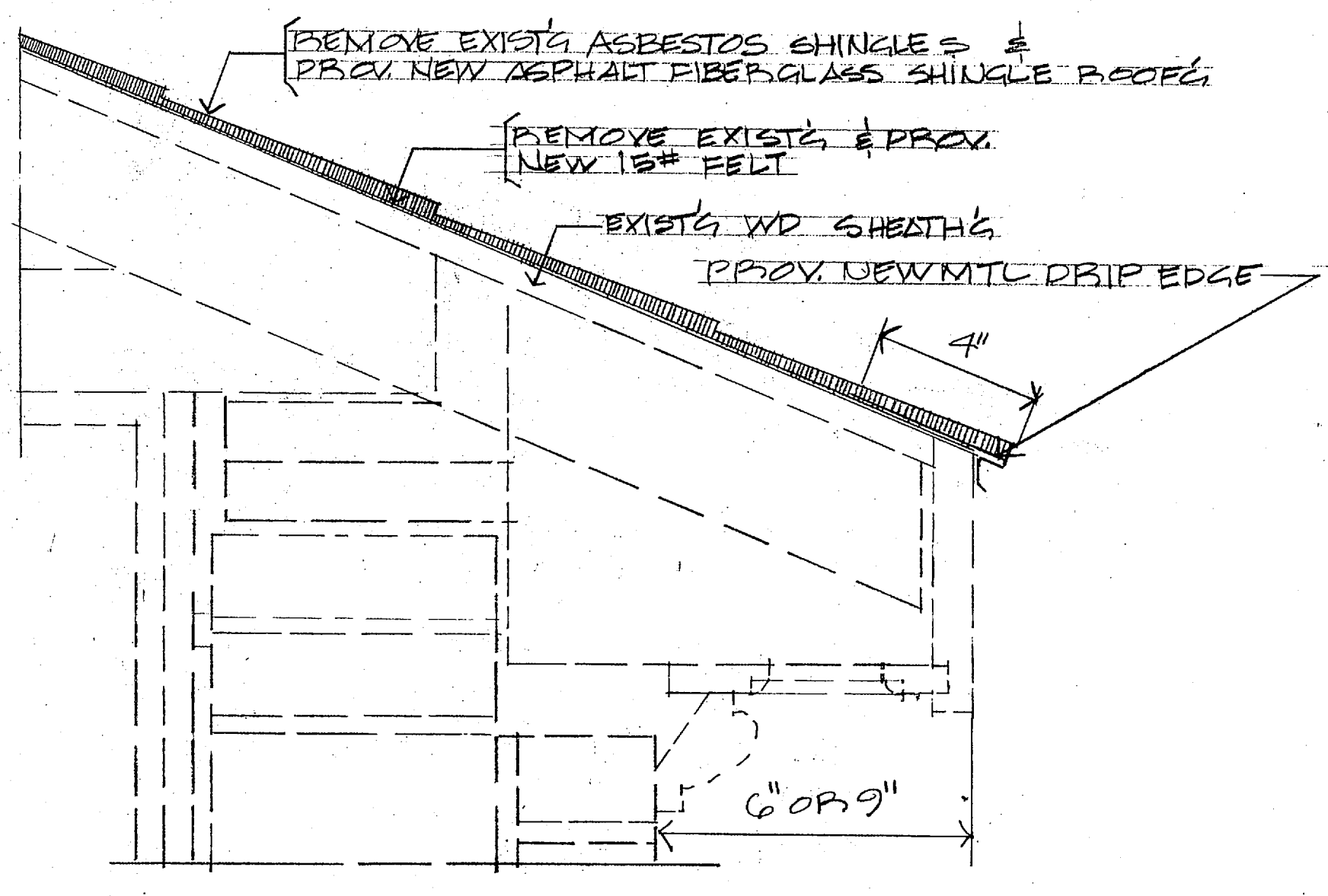


PUBLIC WORKS DEPT. MARINE CORPS BASE CAMP LEJUNE, N.C.		DEPARTMENT OF THE NAVY NAVAL FACILITIES ENGINEERING COMMAND ATLANTIC DIVISION NORFOLK, VIRGINIA	
DESIGN: [Signature]		MARINE CORPS BASE, CAMP LEJUNE, N.C.	
PROJECT: [Signature]		REPAIR INTERIOR ELECTRICAL SYSTEMS, BLDGS. 1 & 2	
APPROVED: [Signature]		FLOOR PLANS - BLDG. 2	
PUBLIC WORKS OFFICER		NAVFAC DRAWING NO. 4011769	
Satisfactory to: _____		CONSTR CONTR NO N62470-74-B-0665	
COMMANDING GENERAL		SCALE: 1/8" = 1'-0" SPEC: 05-74-0665	
EFD: _____		SHEET 3 OF 4	
HD: _____		LAND DIV. DWG NO.	
APPROVED: [Signature]		DATE: 12/20/74	
FOR COMMANDER, NAVFAC			

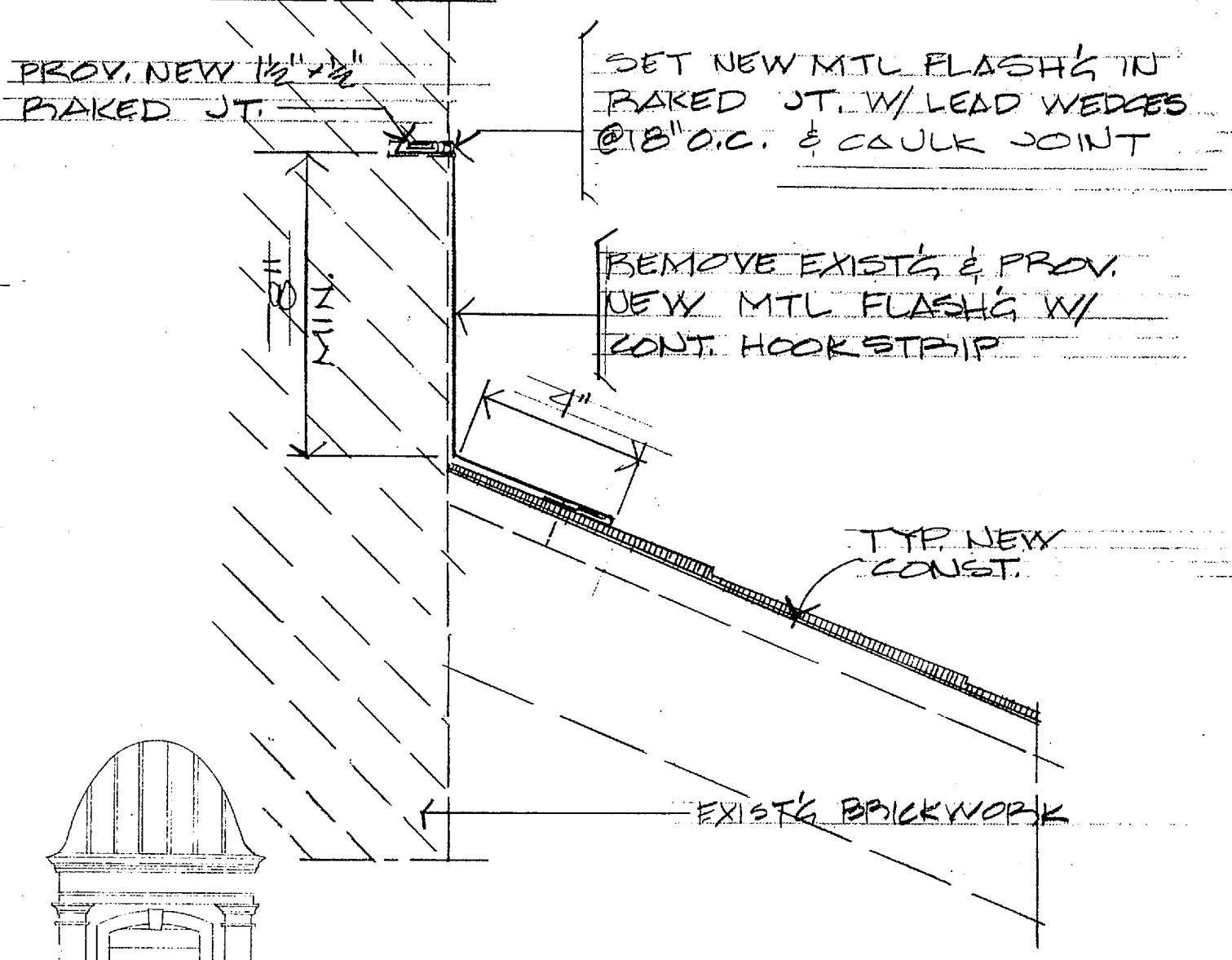
3008-2



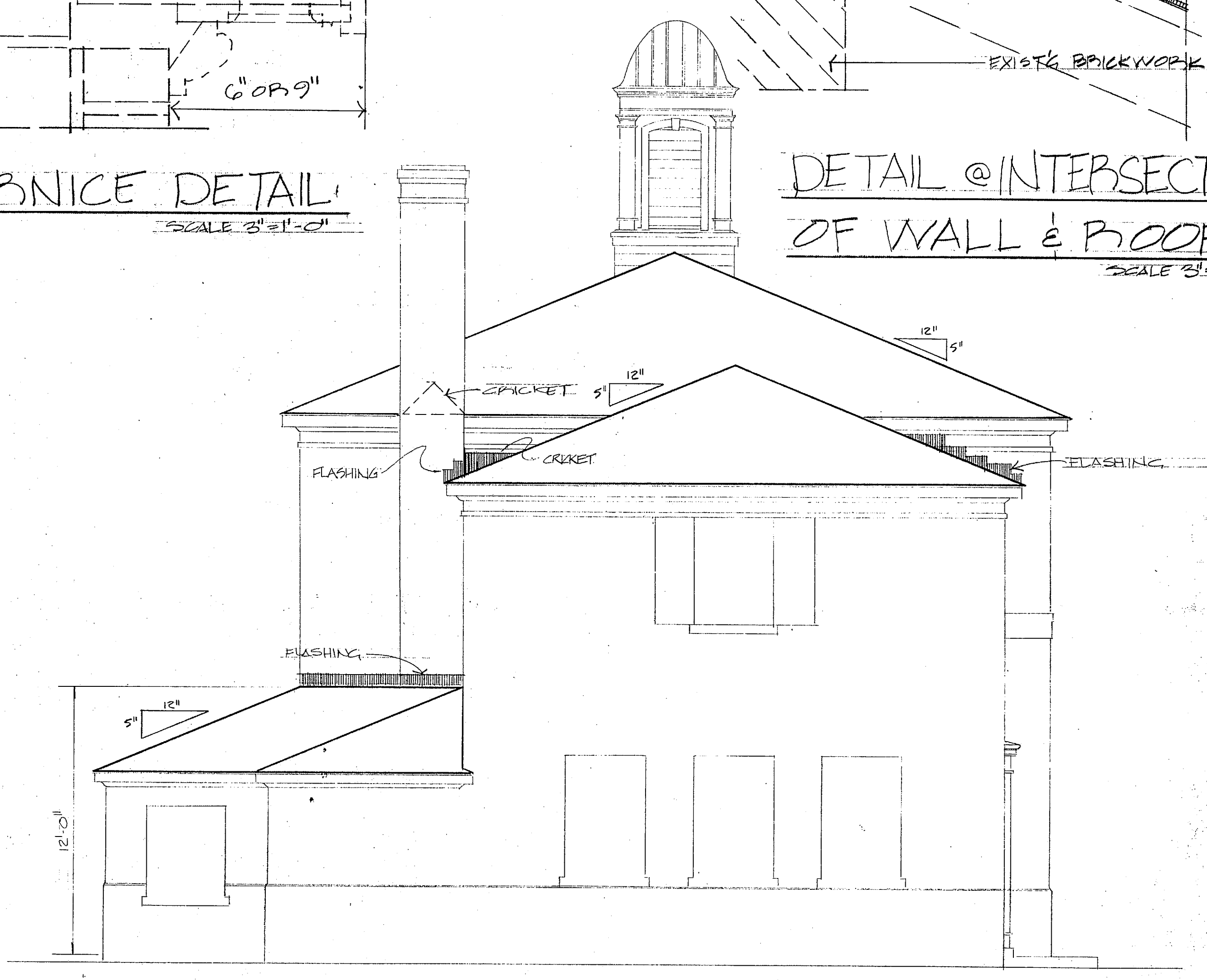
ROOF PLAN - BLDG 18
SCALE 1/4"=1'-0"



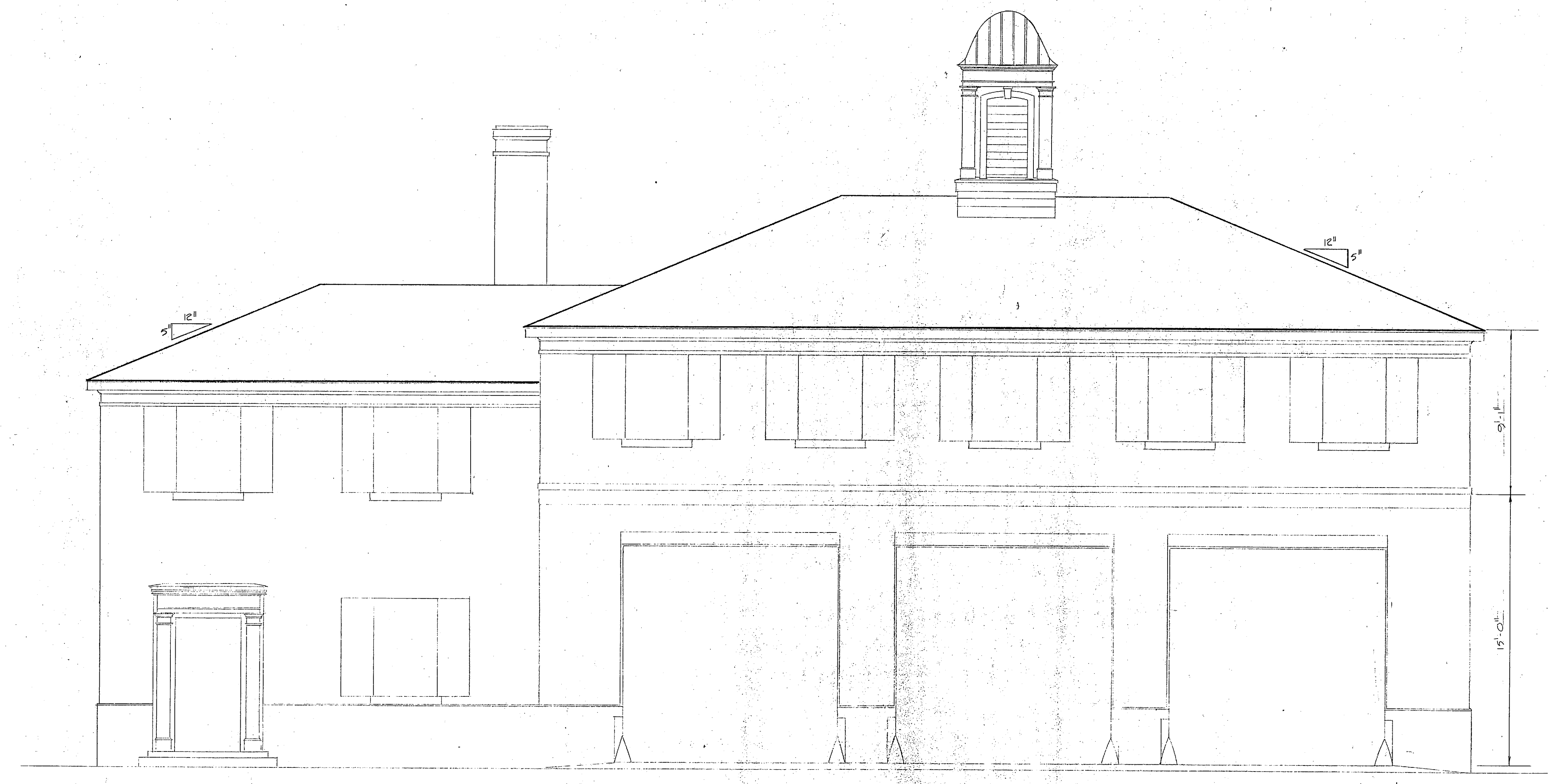
TYP. CORNICE DETAIL
SCALE 3/8"=1'-0"



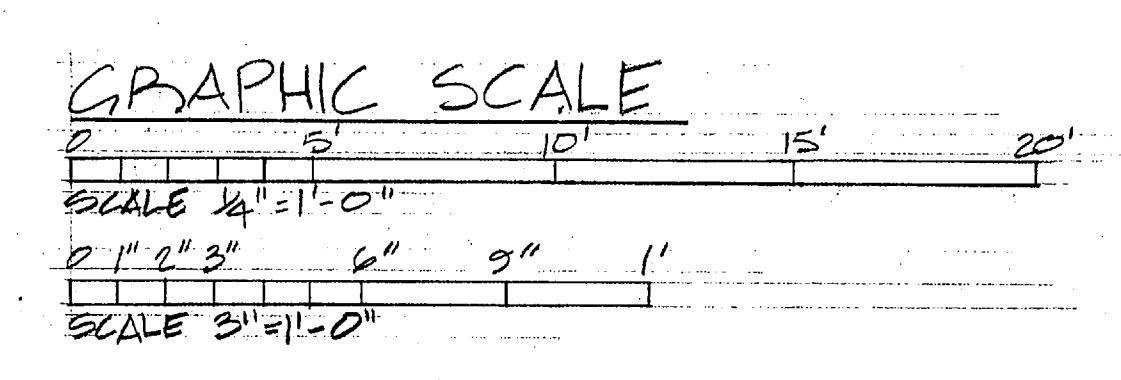
DETAIL @ INTERSECTION OF WALL & ROOF
SCALE 3/8"=1'-0"



LEFT SIDE ELEVATION BLDG 18
SCALE 1/4"=1'-0"



FRONT ELEVATION BLDG 18
SCALE 1/4"=1'-0"



Bldg 18

- GENERAL NOTES FOR BLDG 18
1. REMOVE EXISTG ASBESTOS SHINGLES & PROV. NEW 260# ASPHALT FIBERGLASS SHINGLE ROOF.
 2. PROV. NEW MTL DRIP EDGE.
 3. REMOVE EXISTG & PROV. NEW LEAD SLIDES FOR VENT PIPES. TOTAL NUMBER OF VENT PIPES IS ONE (1) 2" & ONE (1) 3" & TWO (2) 4" SEE NAVAL DWG NO HO 36474 FOR TYPICAL VENT PIPE DETAIL.

A-8		REVISIONS	
SYM	DESCRIPTION	DATE	APPROVED

PUBLIC WORKS DEPT. MARINE CORPS BASE CAMP LEJEUNE, N.C.		DEPARTMENT OF THE NAVY NAVAL FACILITIES ENGINEERING COMMAND ATLANTIC DIVISION MARINE CORPS BASE, CAMP LEJEUNE, N.C. NORFOLK, VIRGINIA	
DESIGNED BY: [Signature]	CHKD BY: [Signature]	REPLACE ROOFS, VARIOUS BUILDINGS	
APPROVED BY: [Signature]	DATE: 2/2/77	PLAN, ELEVATIONS & DETAILS - BUILDING 18	
PUBLIC WORKS OFFICER FOR THE LEG		SIZE	NAVFAC DRAWING NO.
STATUTORY TO: [Signature]		F 80091	4036479
COMANDING GENERAL		CONSTR CONTR NO.	NAL 247-78-B-3230
FOR COMMANDER, NAVAL		SCALE GRAPHIC SPEC	09-78-3030

