

ATLANTIC DIVISION
 NAVAL FACILITIES ENGINEERING COMMAND
 NORFOLK, VIRGINIA 23511

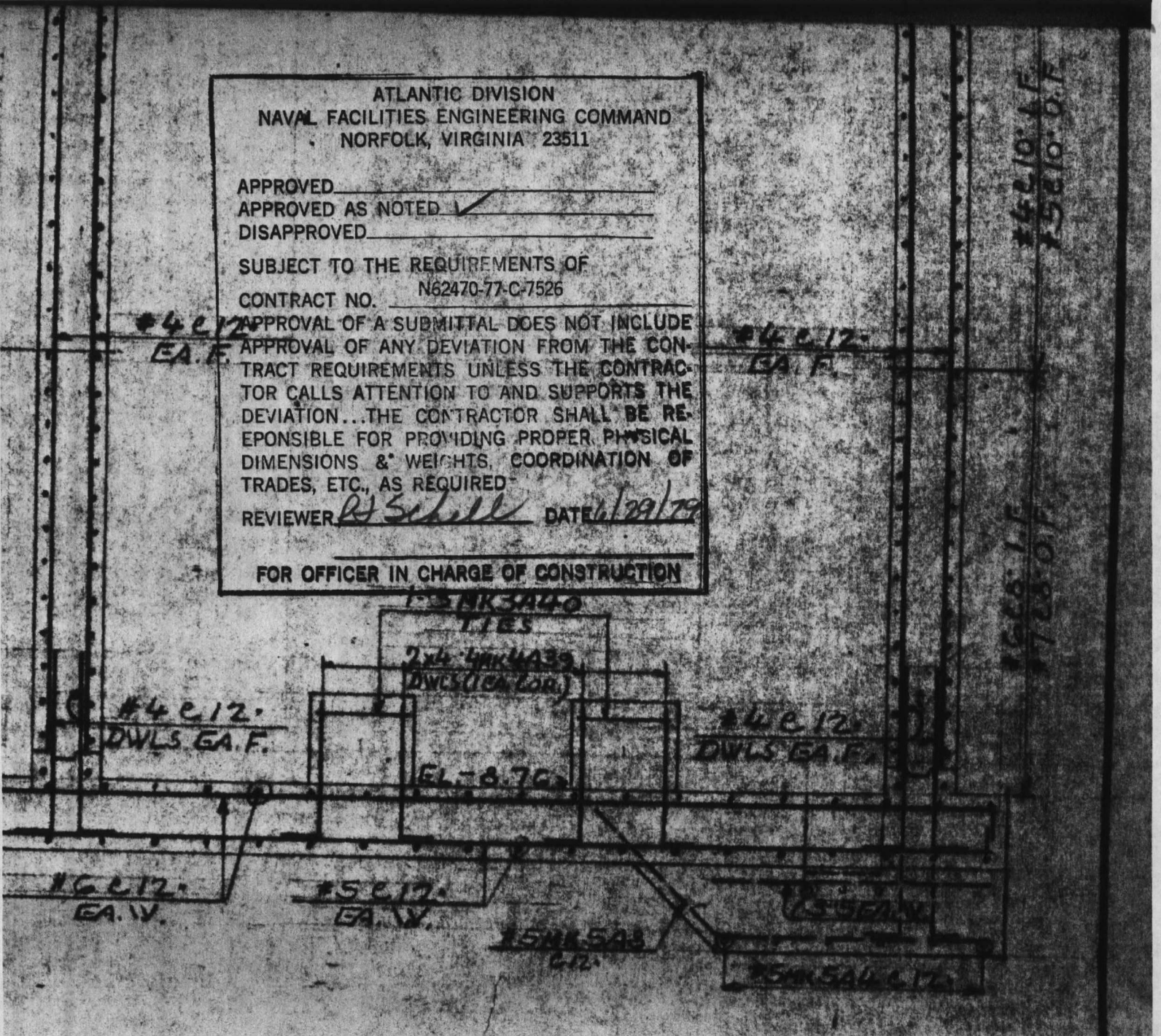
APPROVED _____
 APPROVED AS NOTED _____
 DISAPPROVED _____

SUBJECT TO THE REQUIREMENTS OF
 CONTRACT NO. N62470-77-C-7526

APPROVAL OF A SUBMITTAL DOES NOT INCLUDE
 APPROVAL OF ANY DEVIATION FROM THE CON-
 TRACT REQUIREMENTS UNLESS THE CONTRAC-
 TOR CALLS ATTENTION TO AND SUPPORTS THE
 DEVIATION...THE CONTRACTOR SHALL BE RE-
 SPONSIBLE FOR PROVIDING PROPER PHYSICAL
 DIMENSIONS & WEIGHTS, COORDINATION OF
 TRADES, ETC., AS REQUIRED

REVIEWER RJ Schell DATE 6/29/79

FOR OFFICER IN CHARGE OF CONSTRUCTION



SECTION A-A

FILE NO. _____
 Lockwood Greene Engineers, Inc.
RECEIVED
 JUN 21 1979
 REF. TO _____
 ACK. _____

1189

FOR BENDING DETAILS SEE SHEET 1st OF 3, 1st OF 3 & 1st OF 3

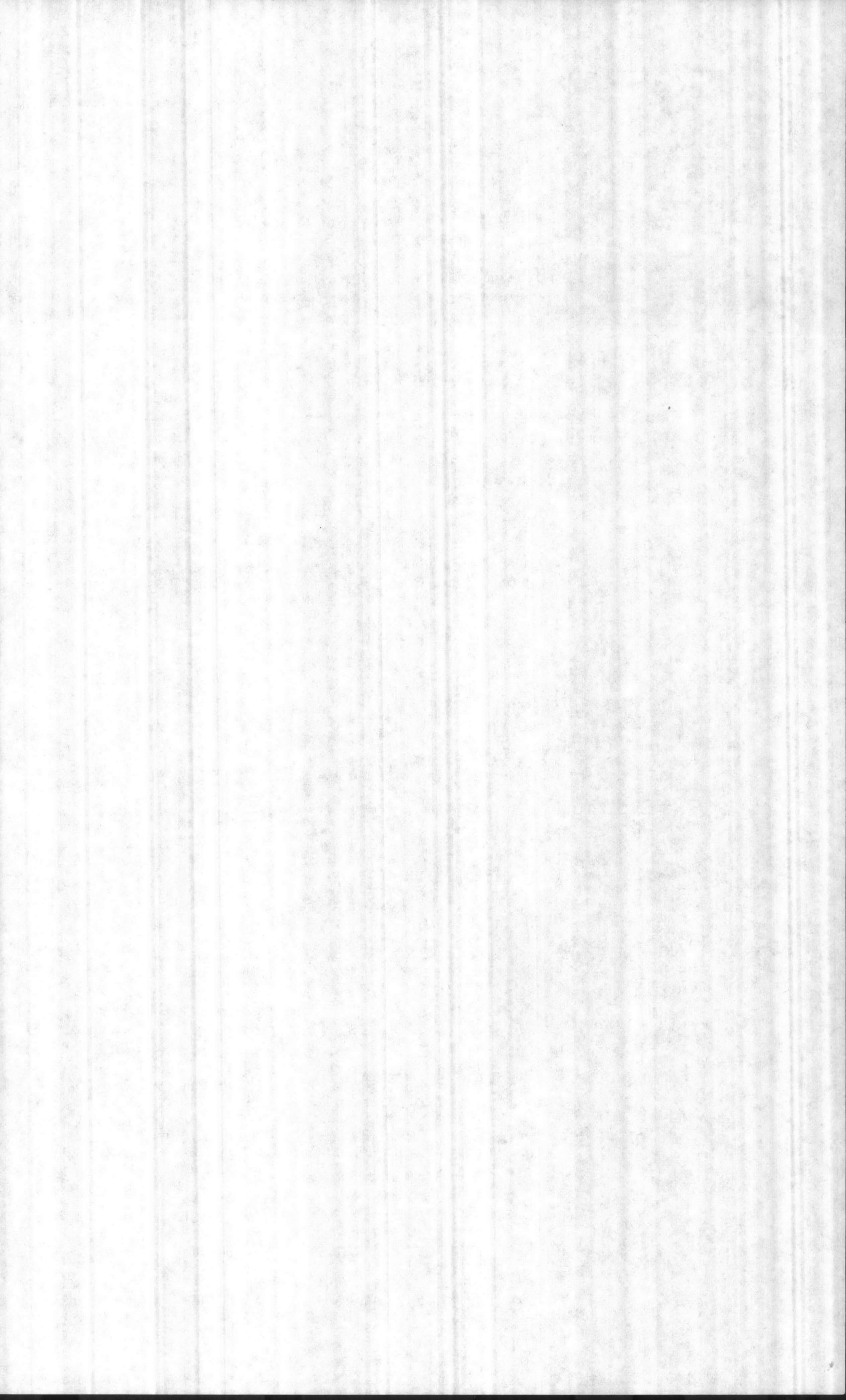
FOR APPROVAL ONLY

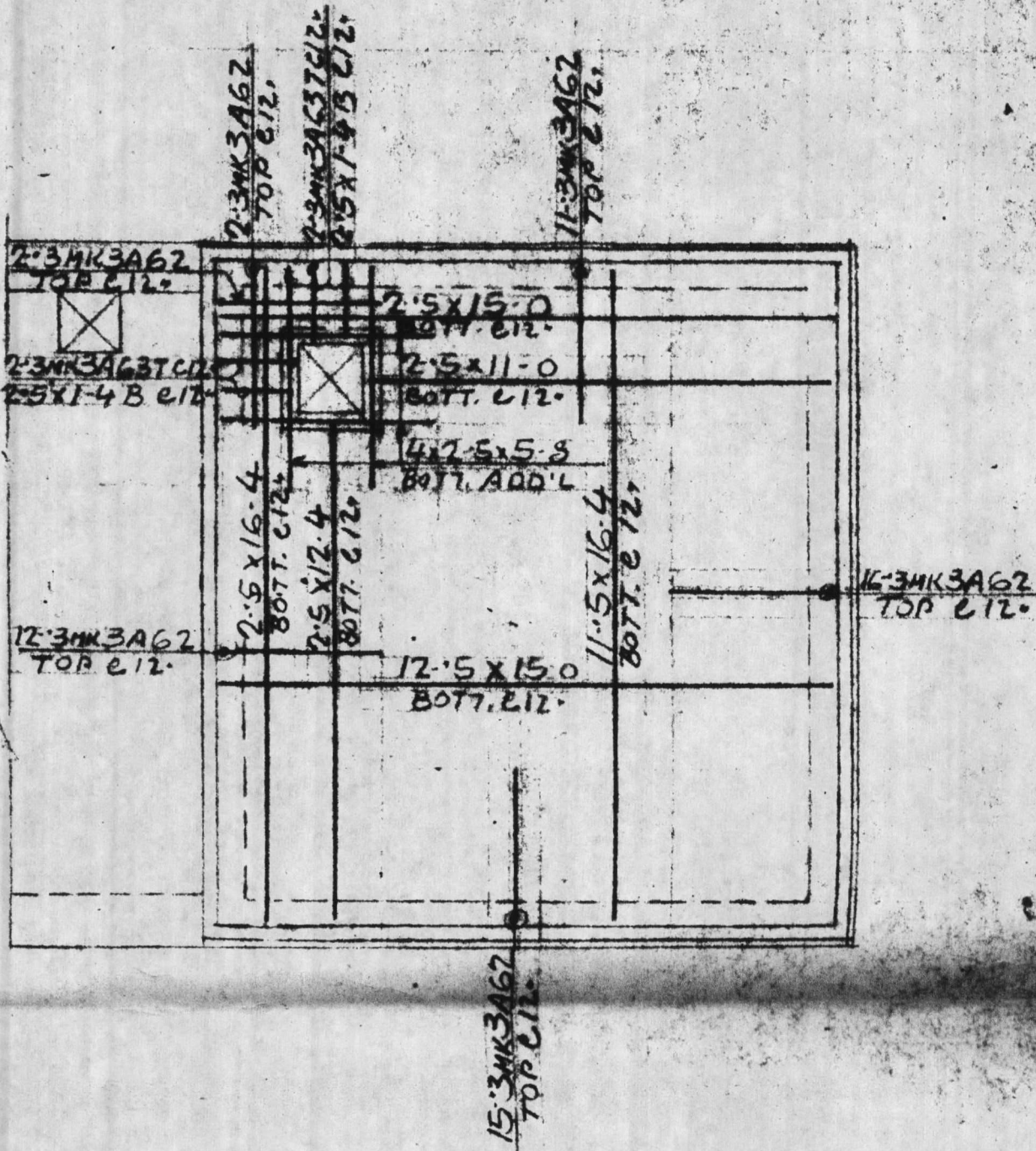
REVISED	
GO	
1-15-15 3-10	
SIGNS	DATE
SECTIONS	6-8-79

FLORIDA STEEL CORPORATION
 "Steel when you want it"

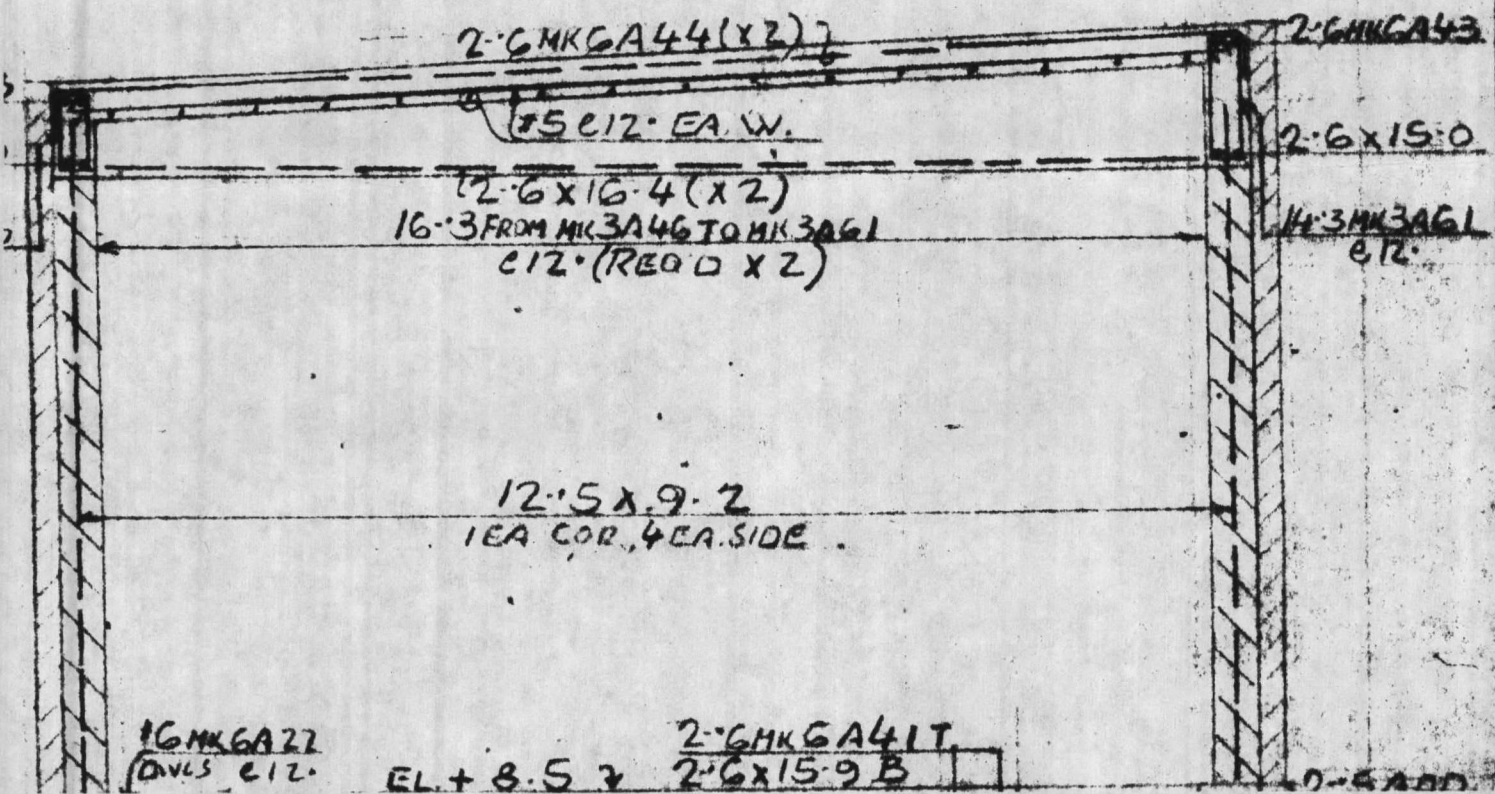
FILE NO. _____
 Lockwood Greene Engineers, Inc.
RECEIVED
 JUL - 3 - 1979
 REF. TO _____
 ACK. _____

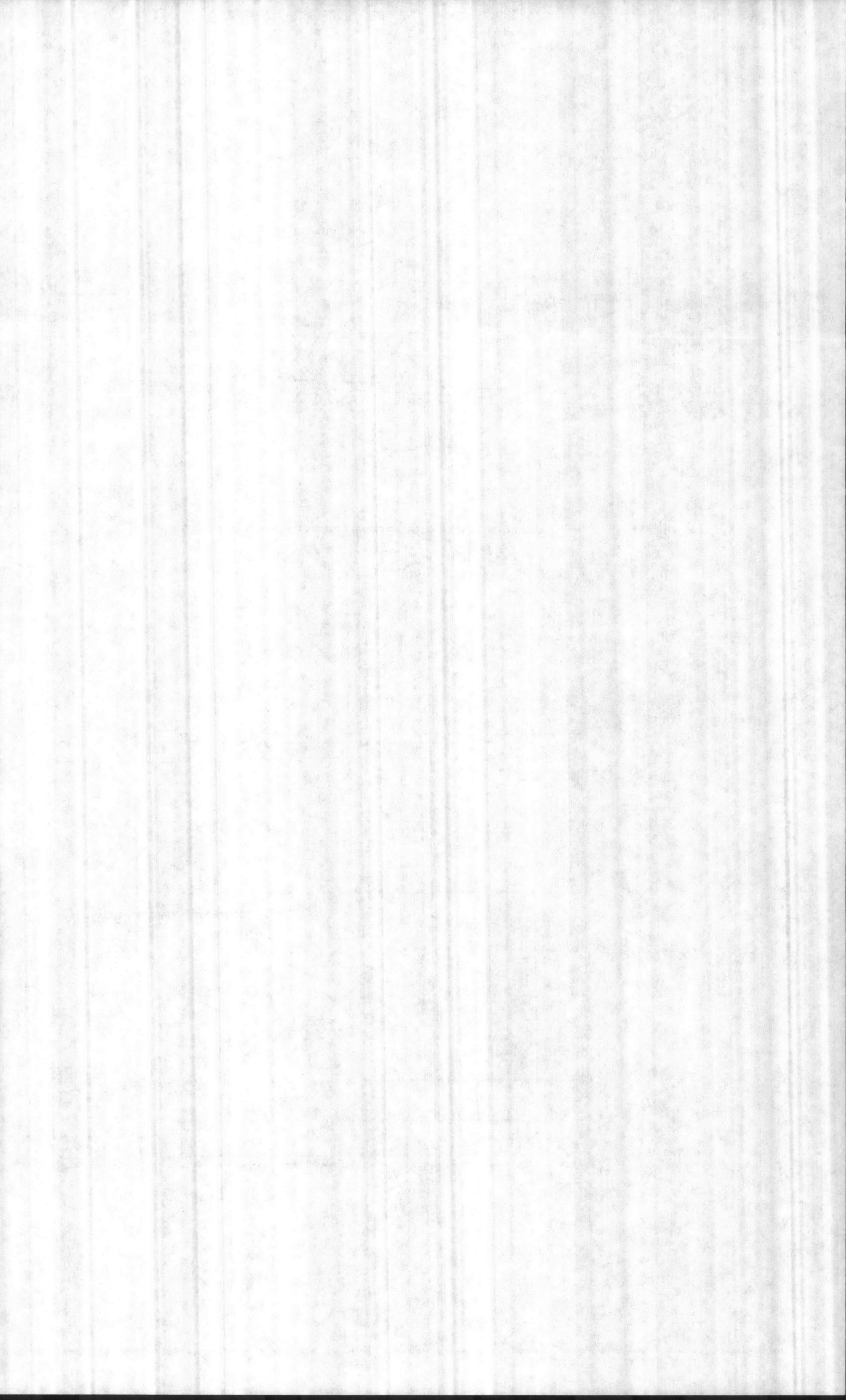
NO.	PRINTED	DATE	STRUCTURE
102	APPD	6-5-79	To 5 BED HOSPITAL
	APPR		LOCATION
	FINAL APPR		CAMP LEJEUNE, N.C.
	FINAL APPR		CUSTOMER
	FILE #		CARDINAL CONST CO.
	FIELD		ARCHITECT
	FIELD		LOCKWOOD-GREENE-SIX ASSOCIATES
	FIELD		ENGINEER
	FIELD		DO
	FIELD		DESCRIPTION
	FIELD		SEWAGE PUMP STATION DETAILS

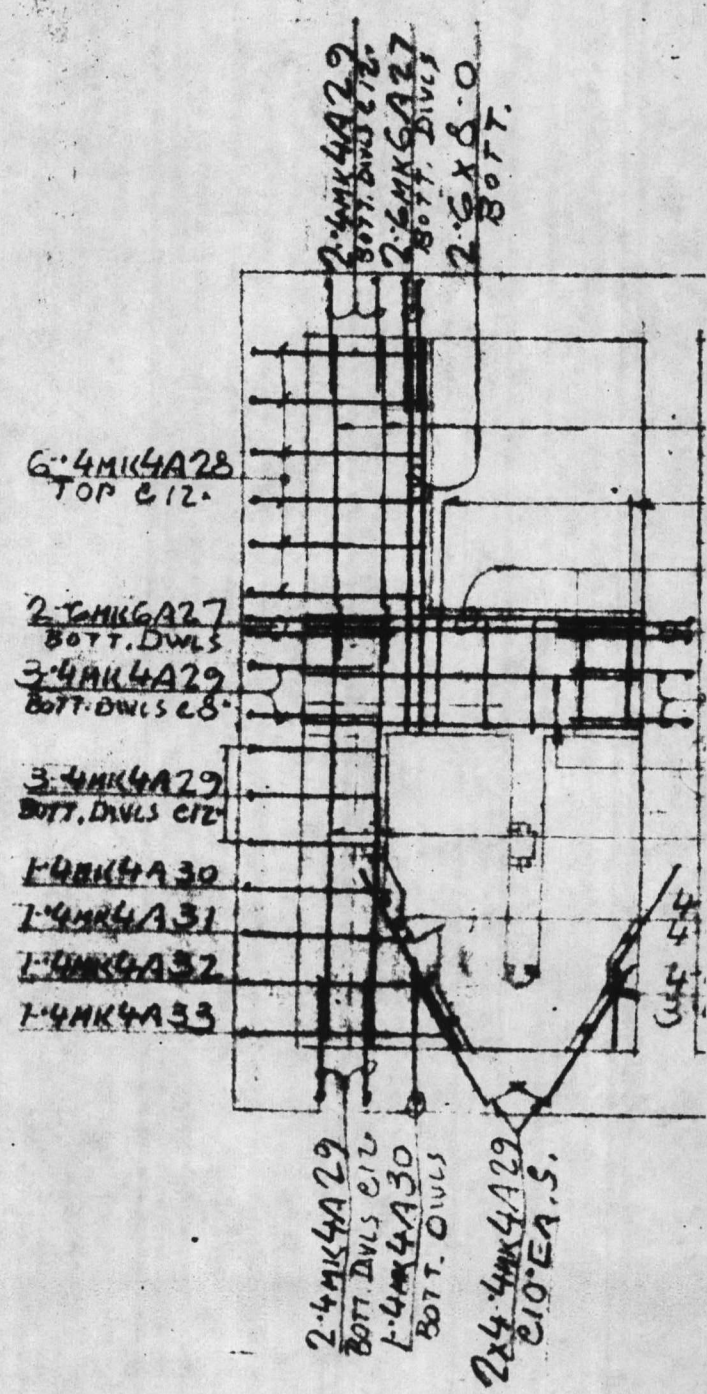
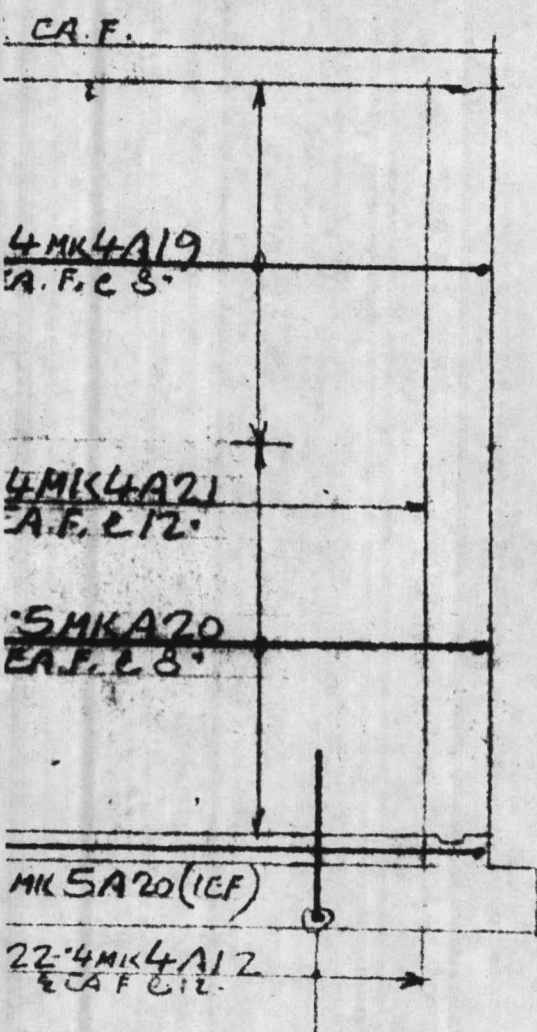




ROOF PLAN

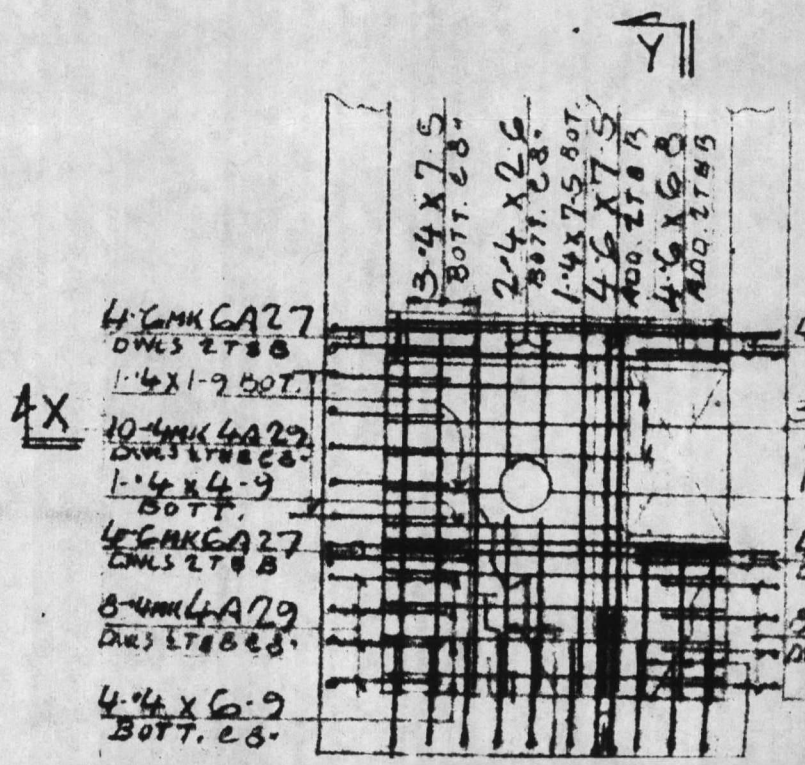
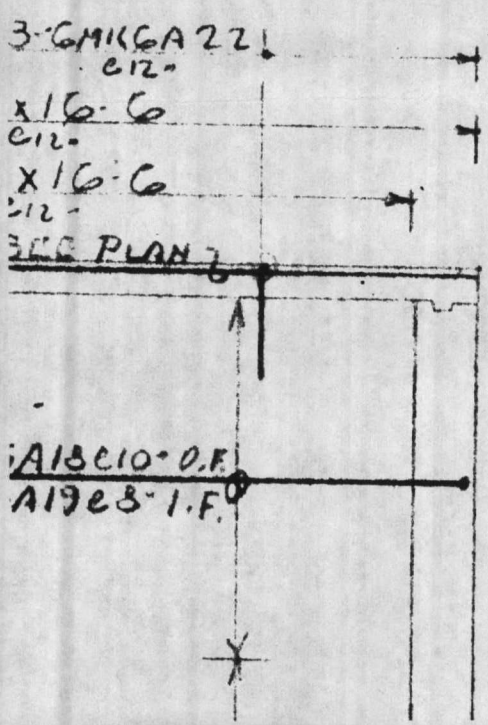


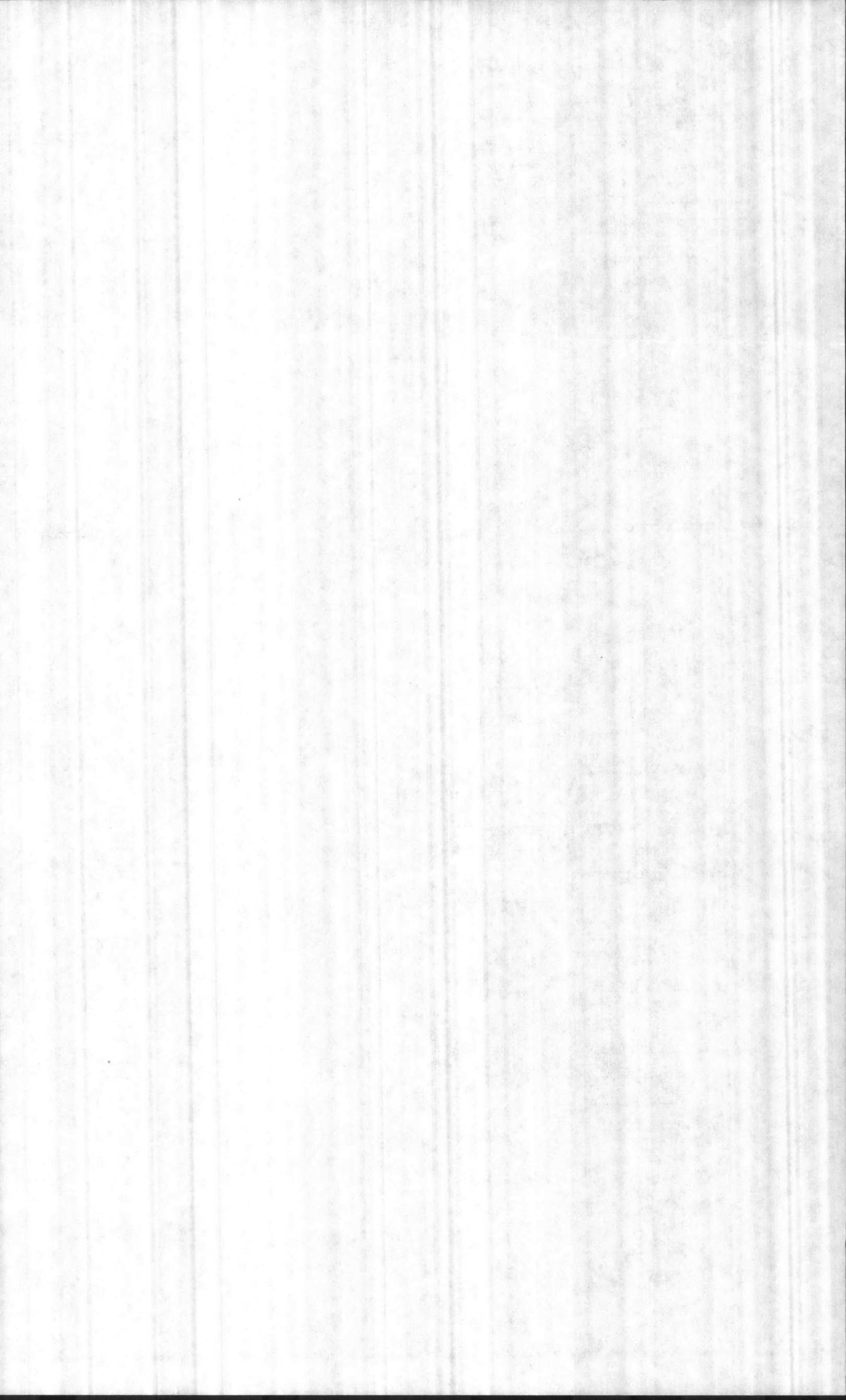


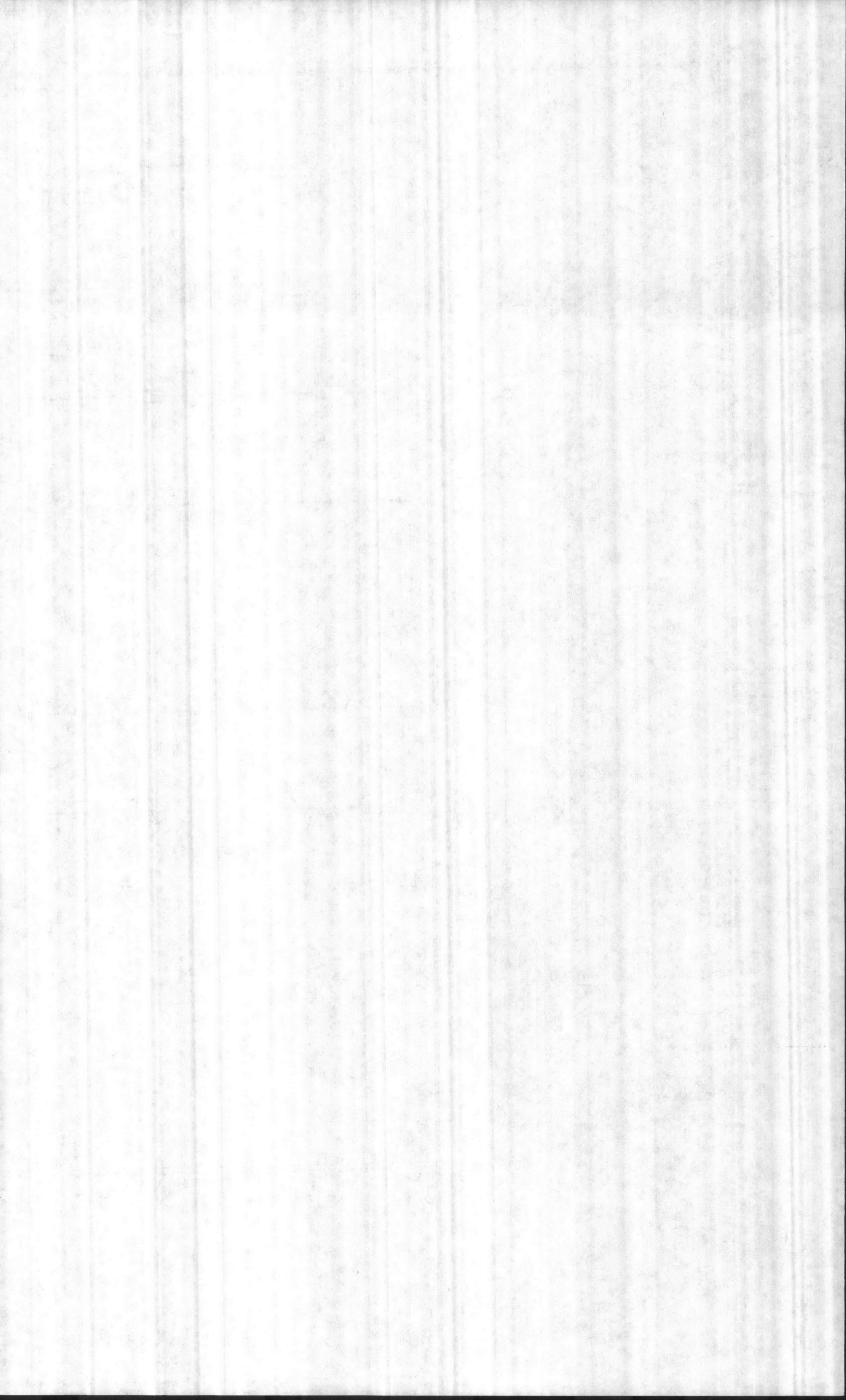


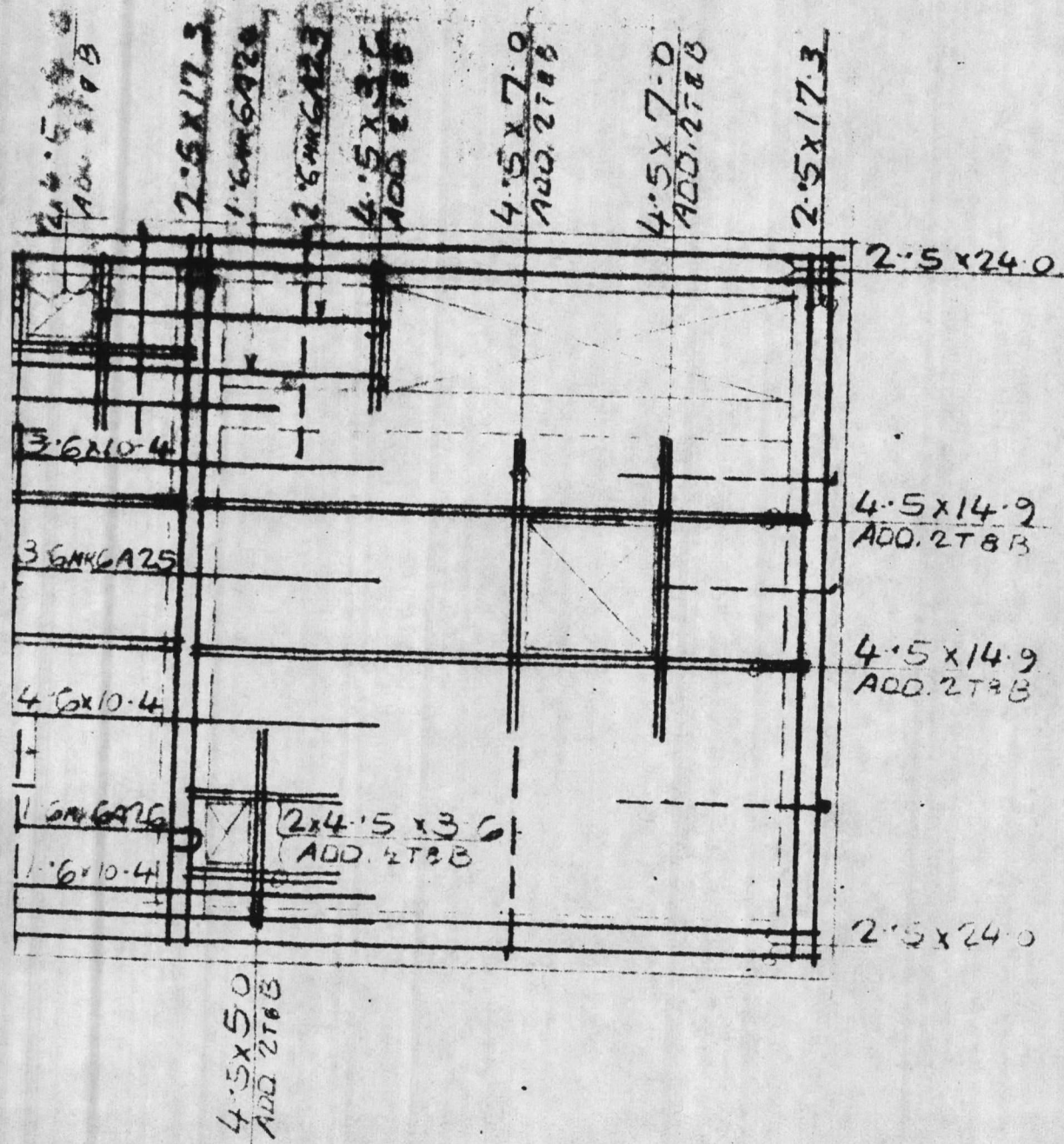
SECTION 5-5

PLAN AT EL. +

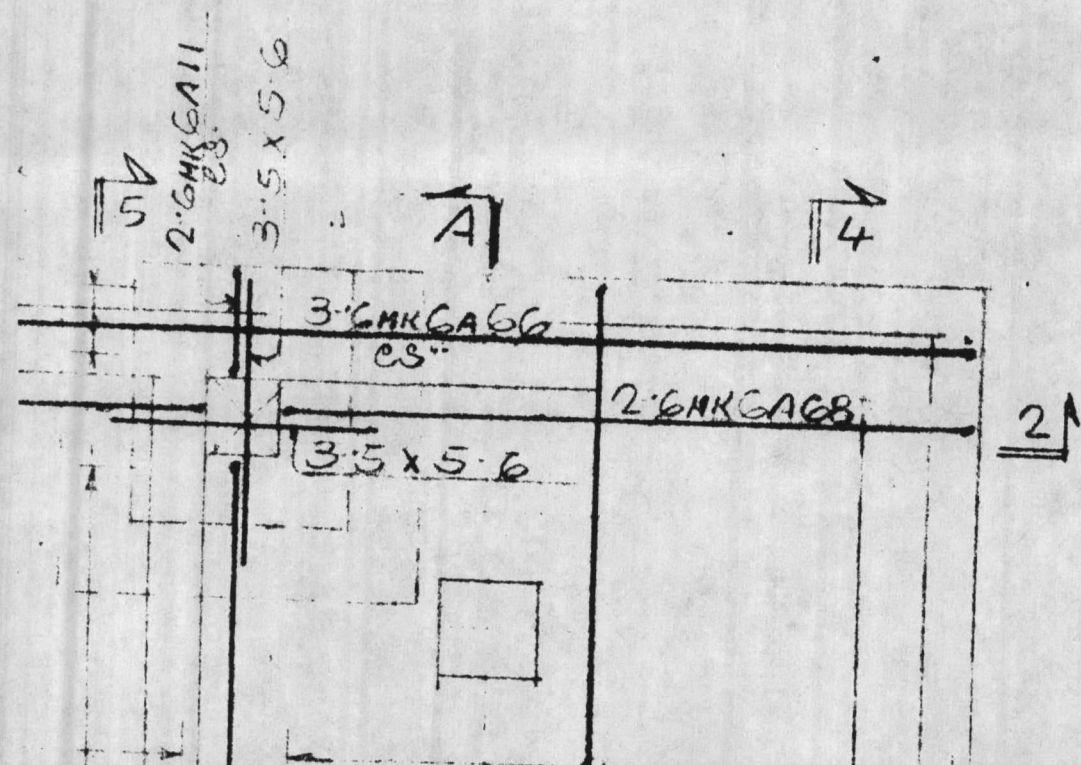




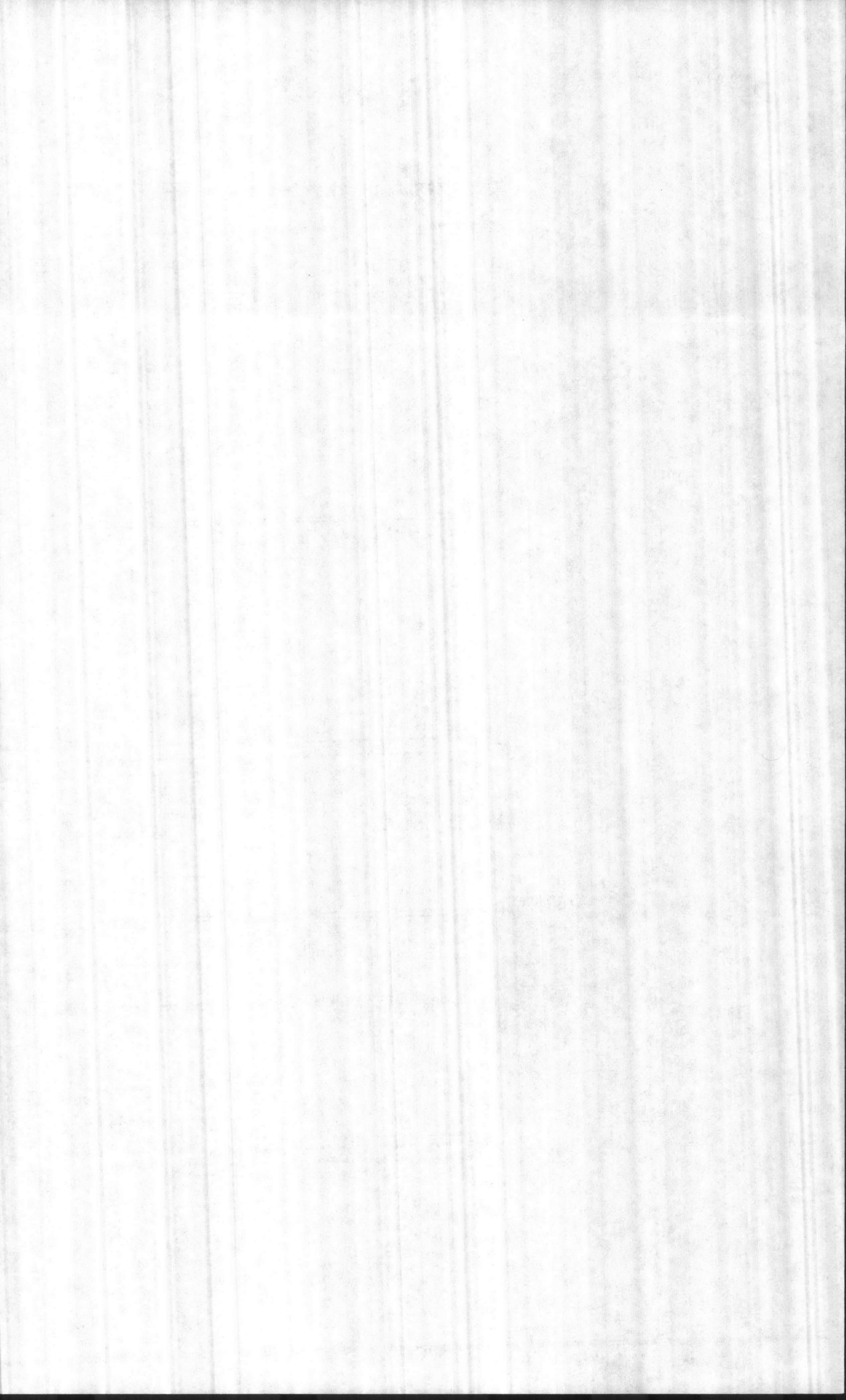


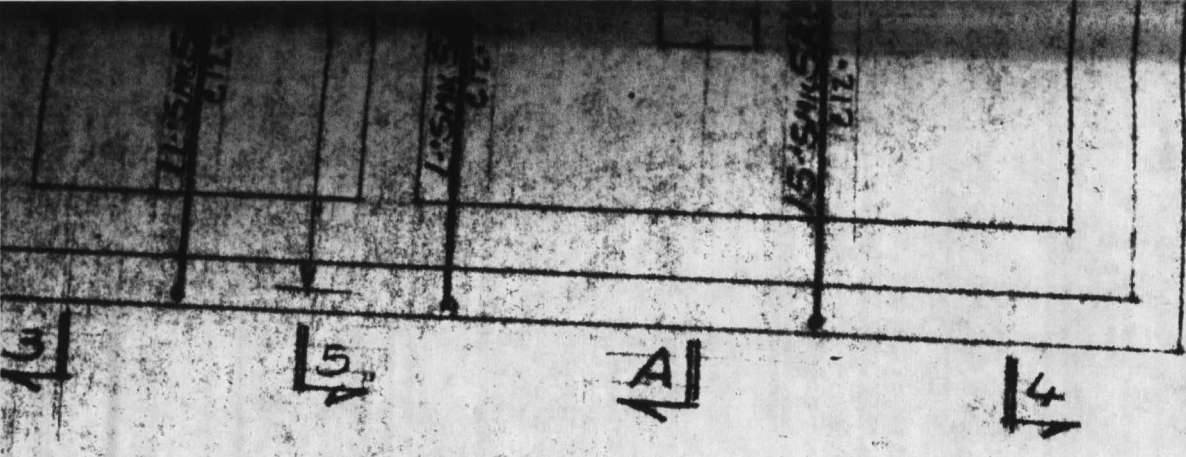


AT EL. +8.5 - TOP BARS

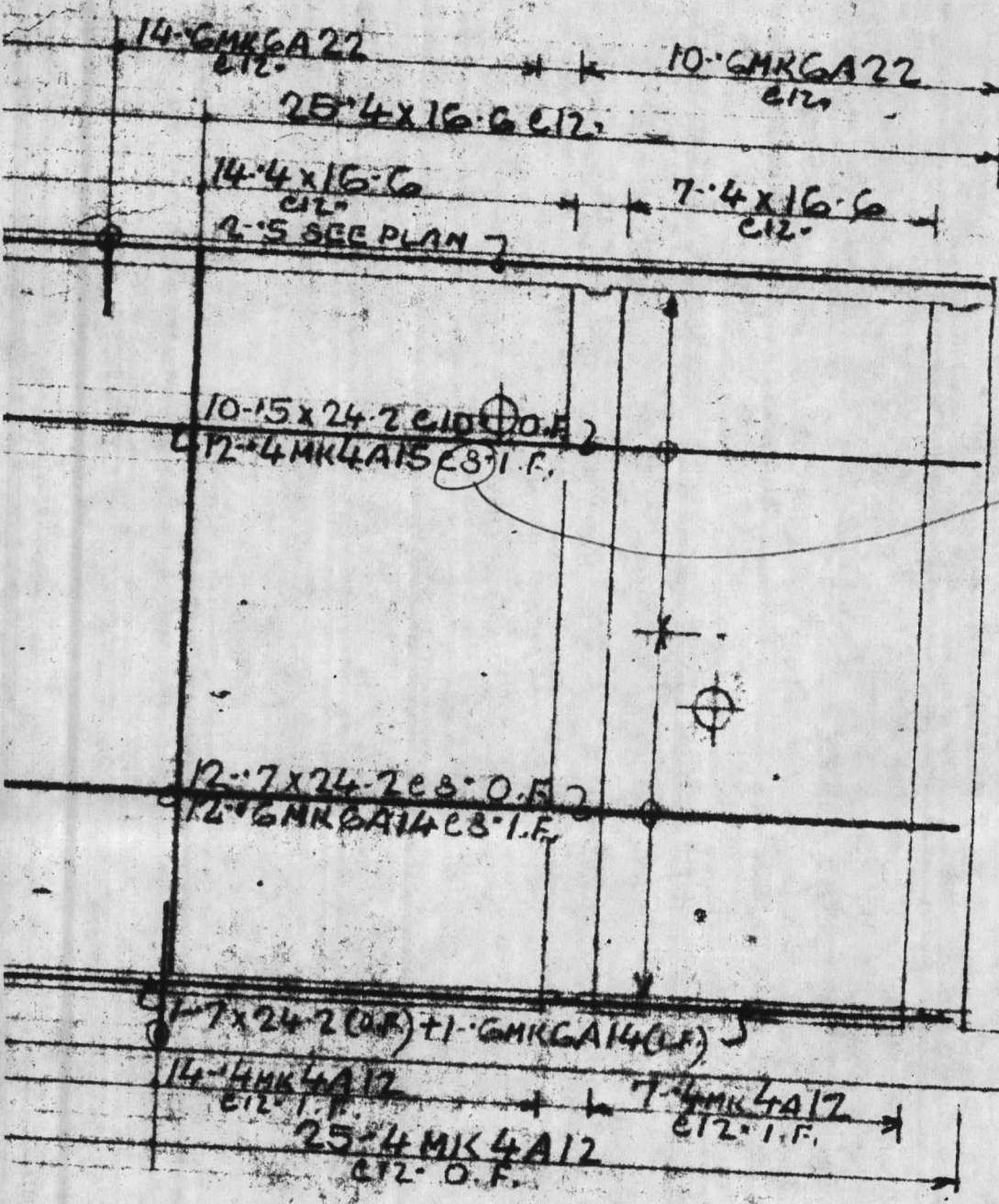


VERT. OF
 14.012
 VERT. I.F.
 14.012





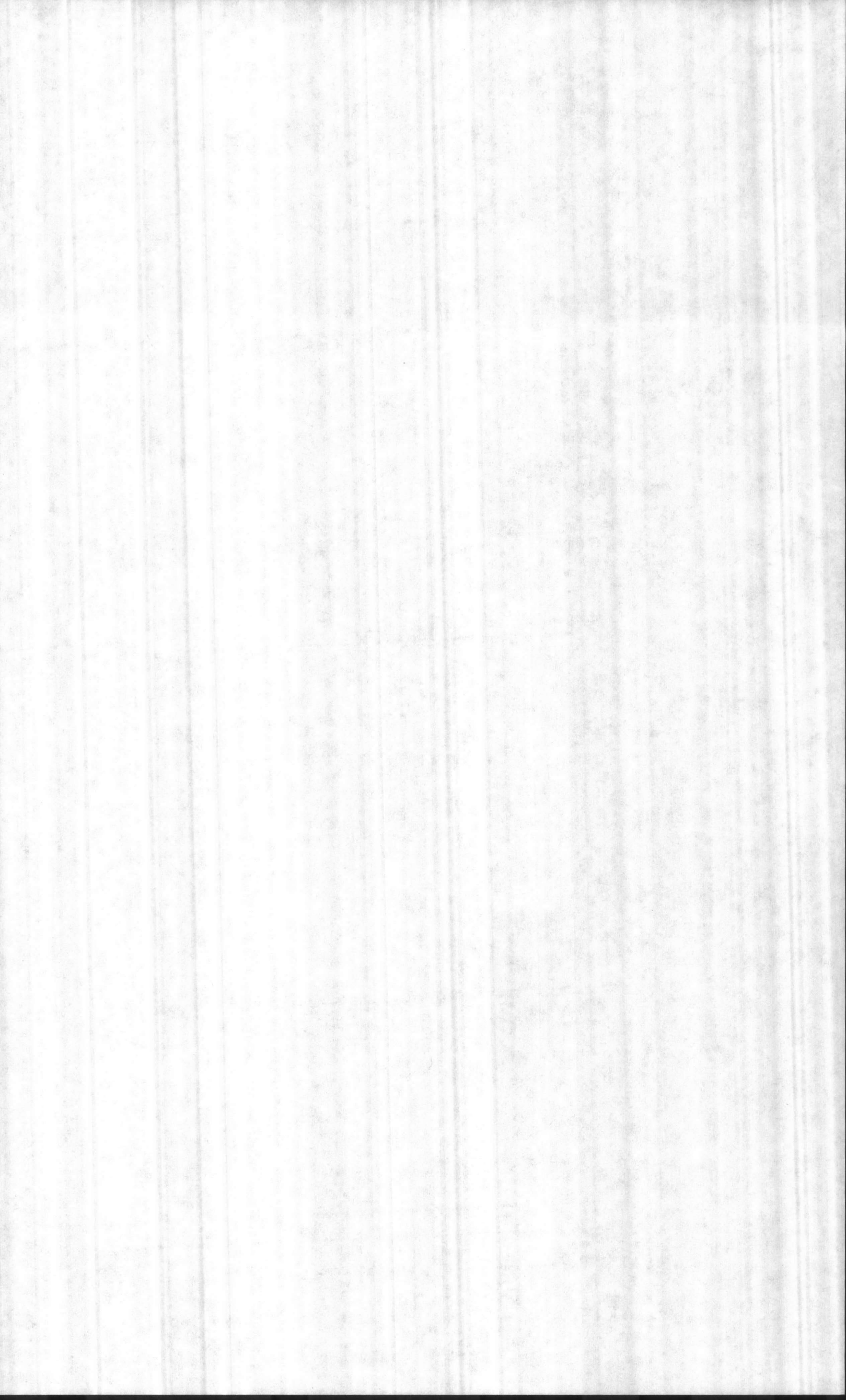
AN AT EL. - 8.76 - BOTT. BARS

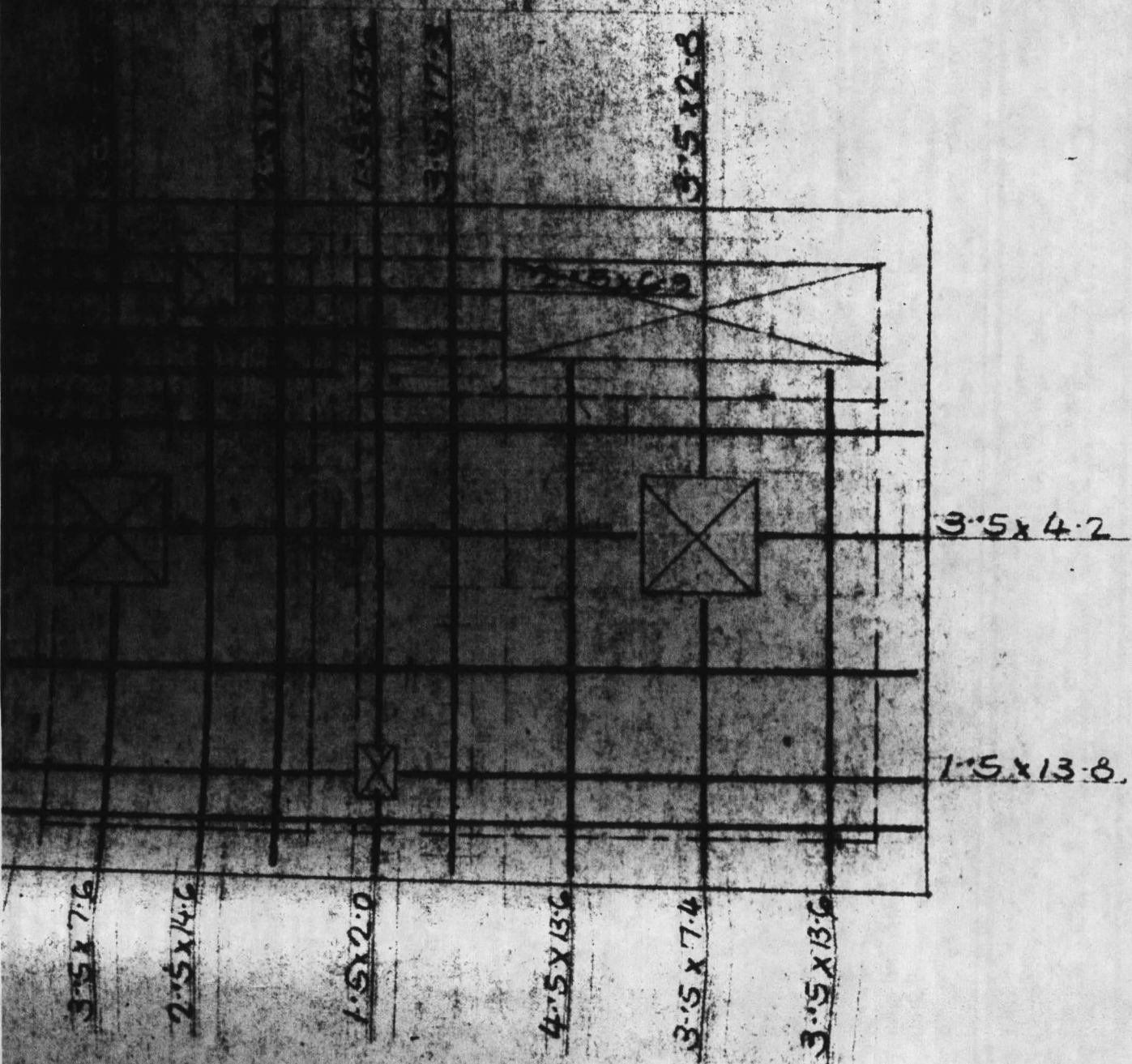


DWLS
 VER 7
 VER 4

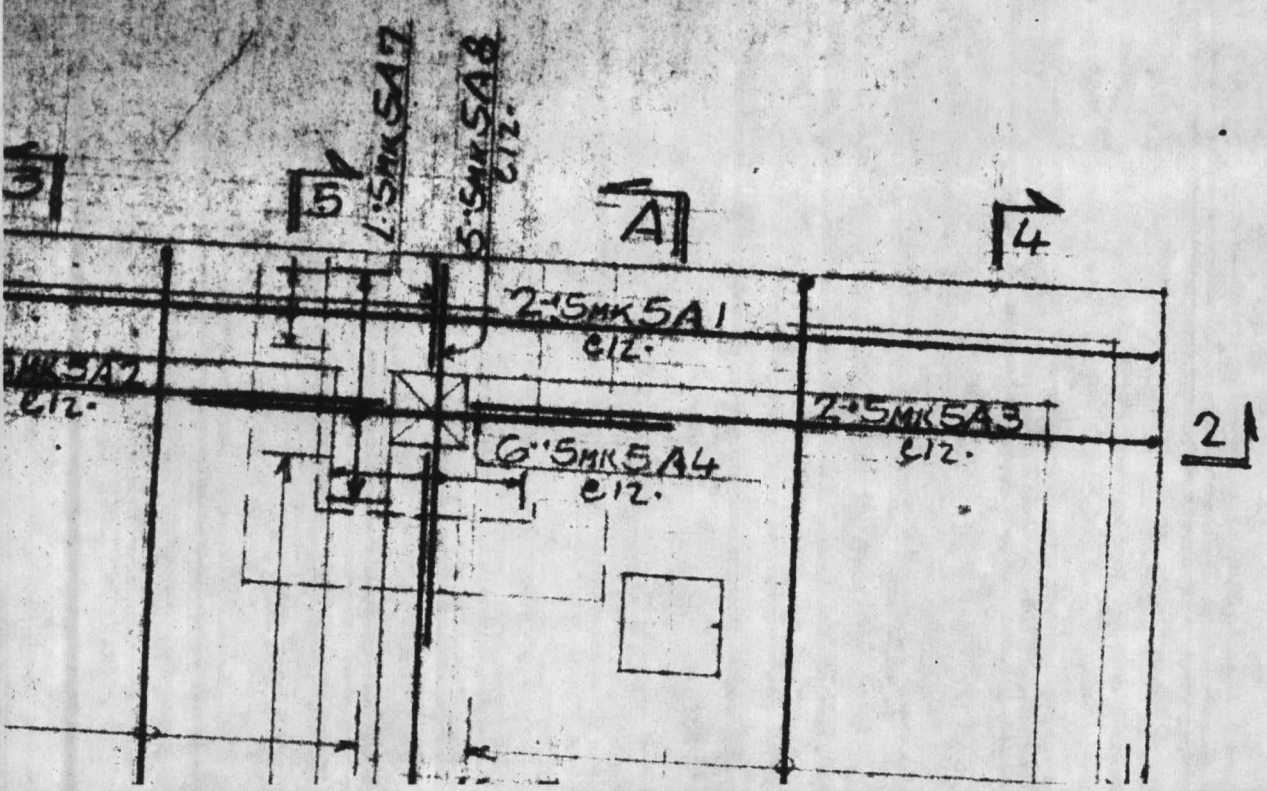
10" SPCG SHOWN
 OK TO LEAVE
 @ 8" RB

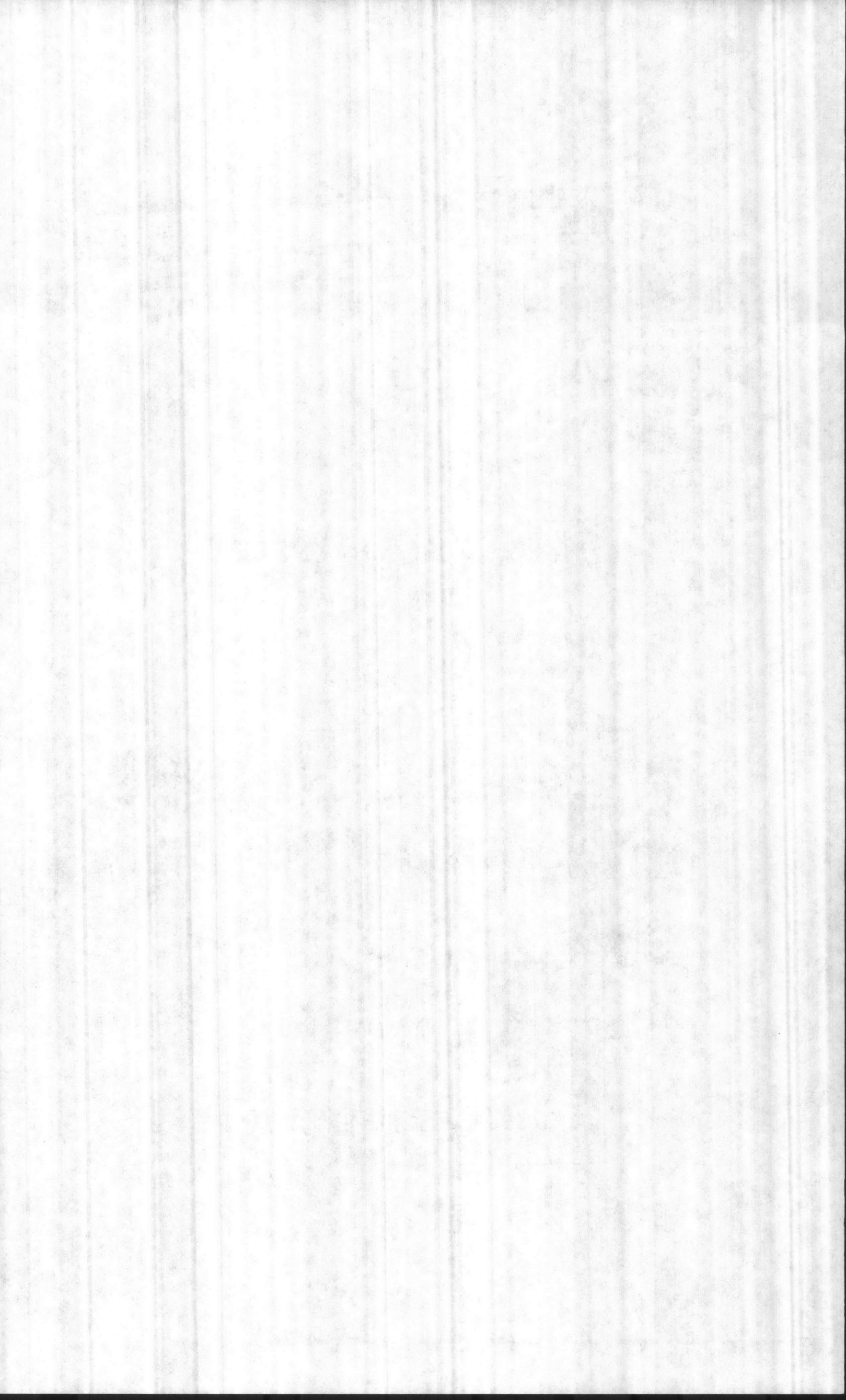
ELEVATION 1-1

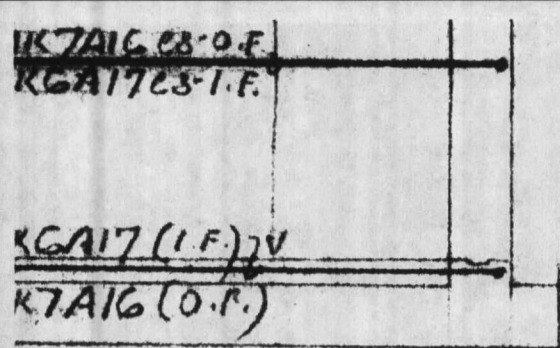




PLAN AT EL.+8.5 - BOTT. BARS

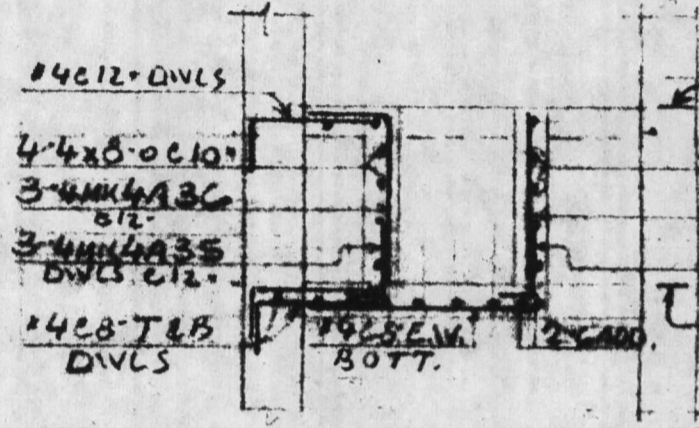
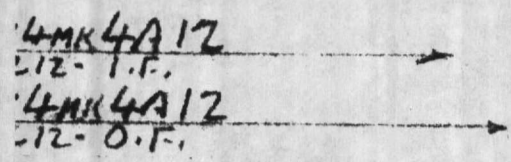






12-4MK4A12
D.V.L.S. LT
2-4A
3-4A
4-4A
6-4A
3-4A
BOTT

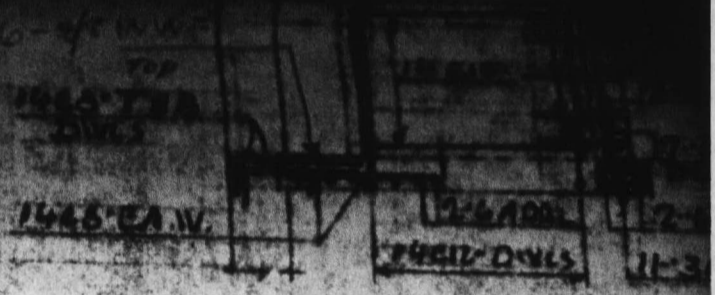
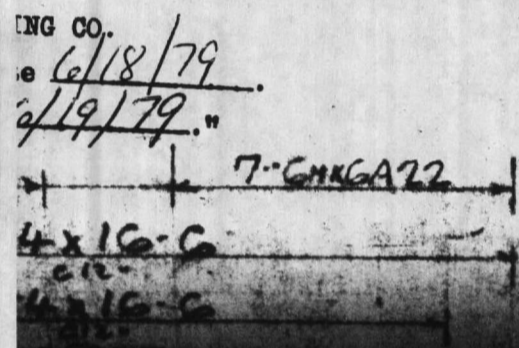
PLAN AT EL -2.



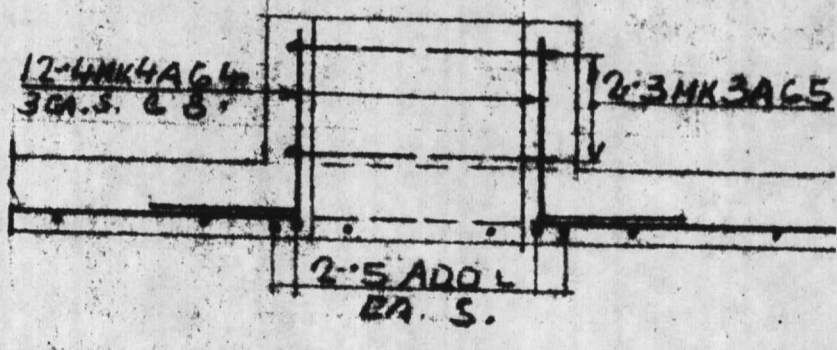
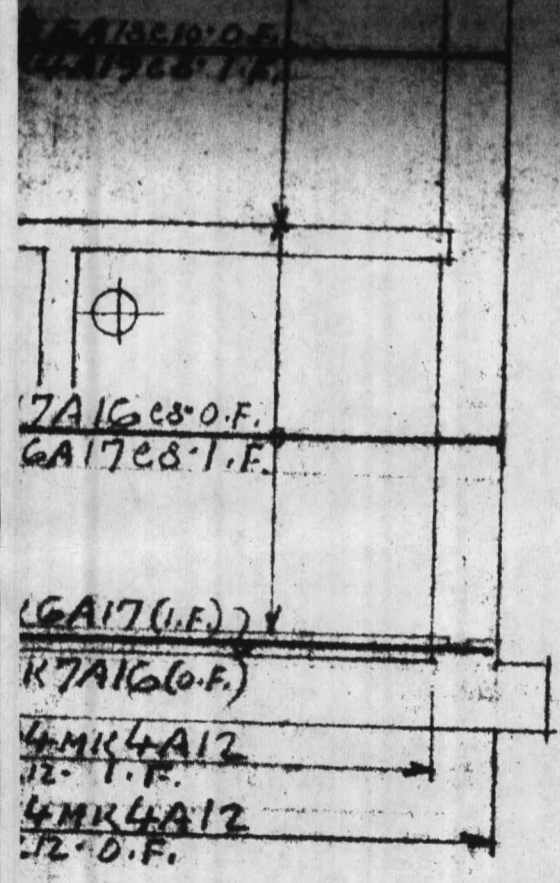
SECTION 4-4

70-77-C-7526
 (equipment) shown and
 approved/proposed to be
 installed, is in compliance with
 codes, and can be installed in
 accordance with (submitted for
 approval)

SECTION X-X



SECTION Y-Y



SECTION 3-3

CURB DET. AT ROOF

