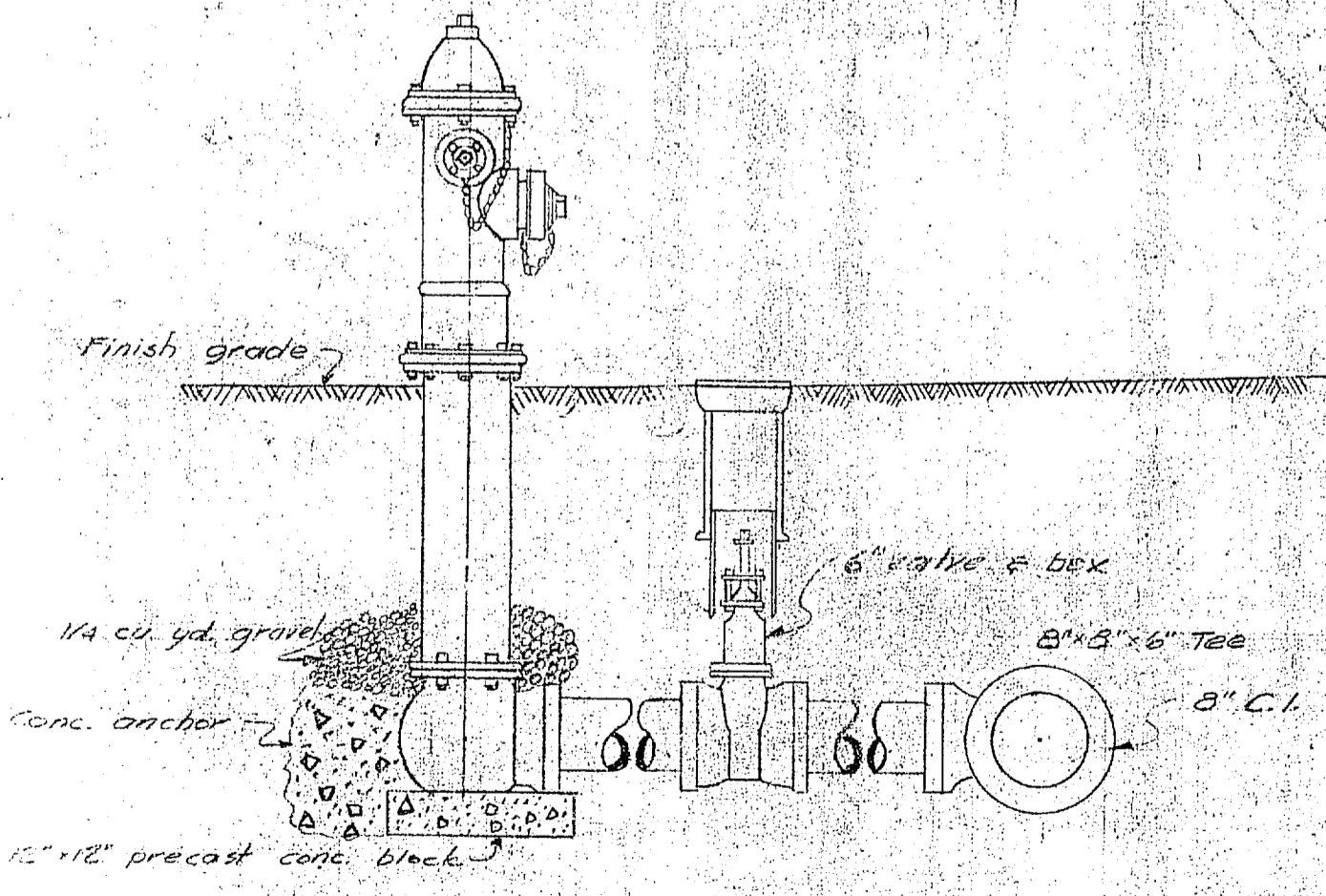


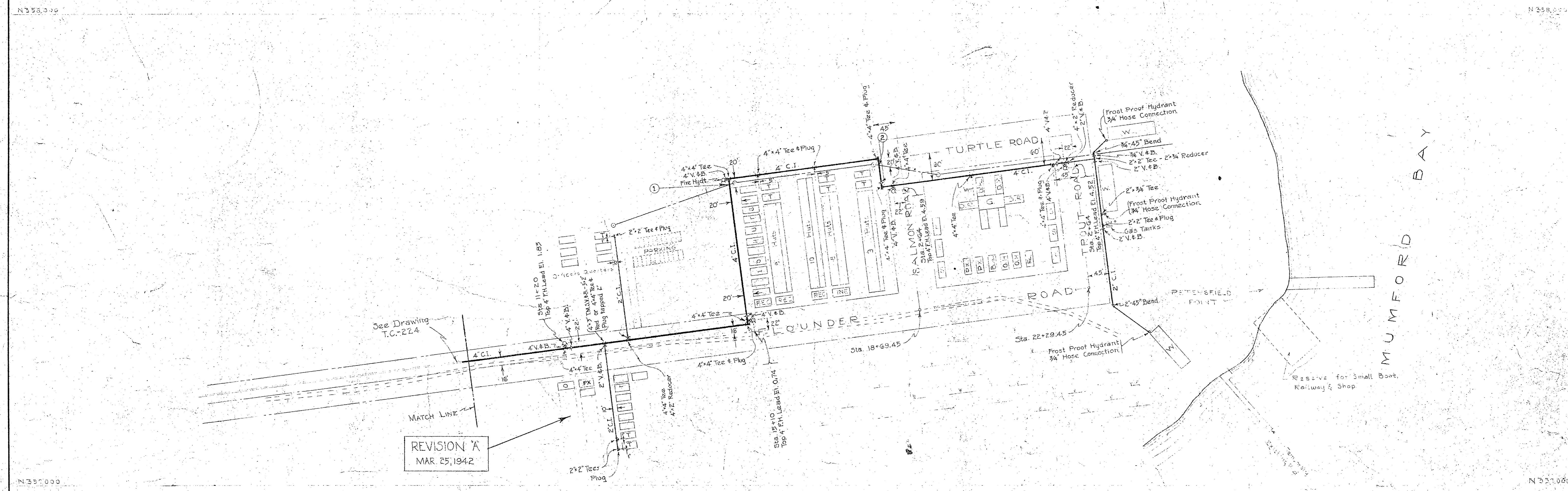
- LEGEND**
- New construction
 - - - - - Exist. structure as noted
 - - - - - New contour
 - - - - - Exist. contour
 - - - - - New water main
 - - - - - New fire hydrant
 - - - - - Exist. fire hydrant
 - - - - - New gate valve & box
 - - - - - Exist. gate valve & box
 - - - - - Fitting on water main
 - - - - - New sanitary sewer
 - - - - - New manhole
 - - - - - Exist. manhole
 - - - - - Exist. overhead telephone & electric lines.



HYDRANT DETAIL
1/8" scale

REVISION	DATE	APPD.	DESCRIPTION	BY
P.W. DRAWING NO. 8737			MARINE BARRACKS CAMP LEJEUNE, N. C.	
DESIGNED BY <i>[Signature]</i>			CAMP GEIGER	
DRAWN BY <i>[Signature]</i>			THREE (3) TEMPORARY BOQ'S	
CHKD BY <i>[Signature]</i>			WATER AND SEWER SYSTEMS	
SUPV BY <i>[Signature]</i>				
APPROVED <i>[Signature]</i>			DATE 31 March	
IN CHARGE <i>[Signature]</i>			PUBLIC WORKS OFFICER	
APPROVED <i>[Signature]</i>			SCALE 1" = 30'	
			SHEET 10 OF 12	
			SPEC 3 4 15 0	
			No. 7 4 1 8 5	
THE QUARTERMASTER GENERAL OF THE MARINE CORPS			Y & D DRAWING NO. 56683	
DATE				





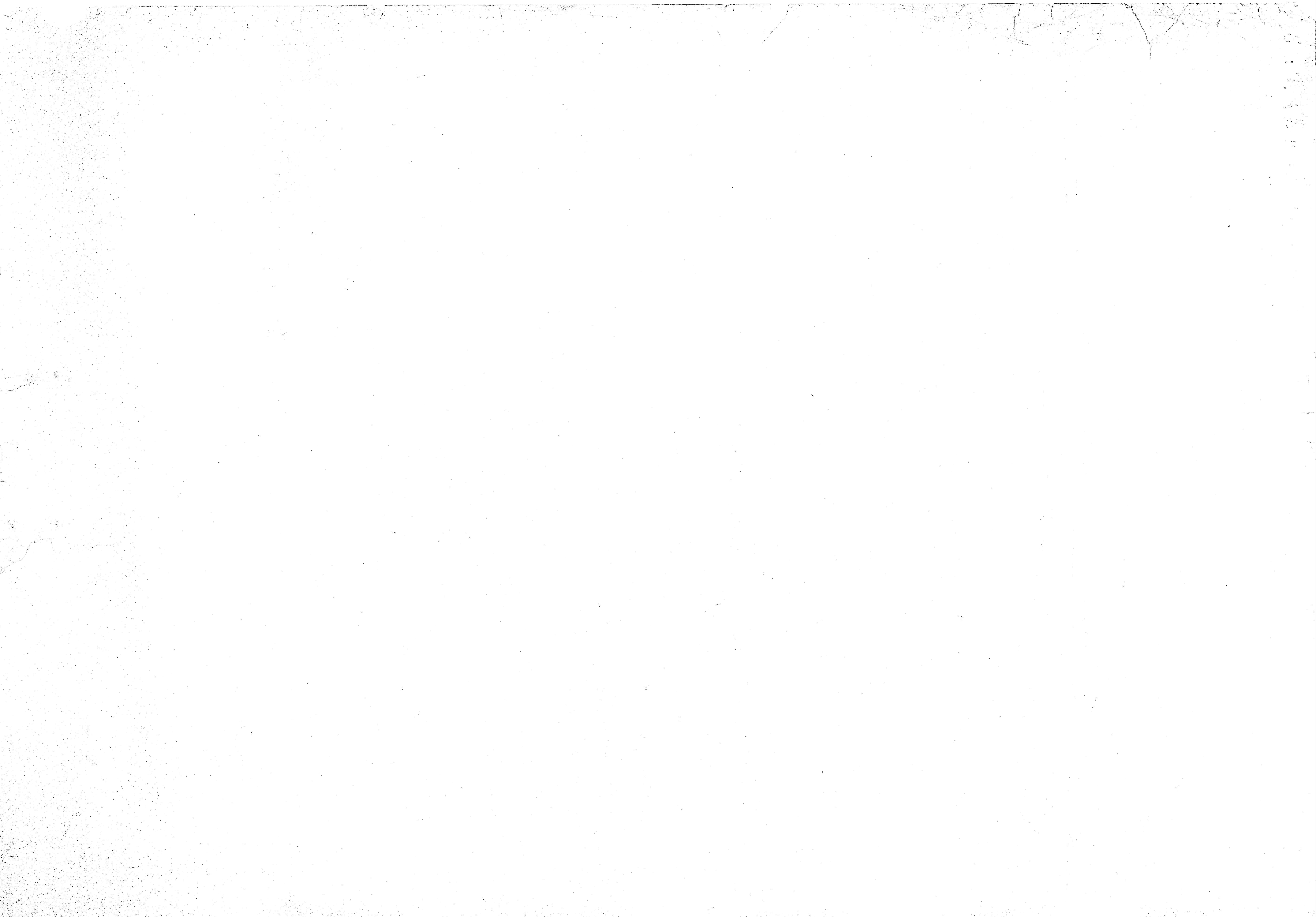
REVISION A
MAR 25, 1942

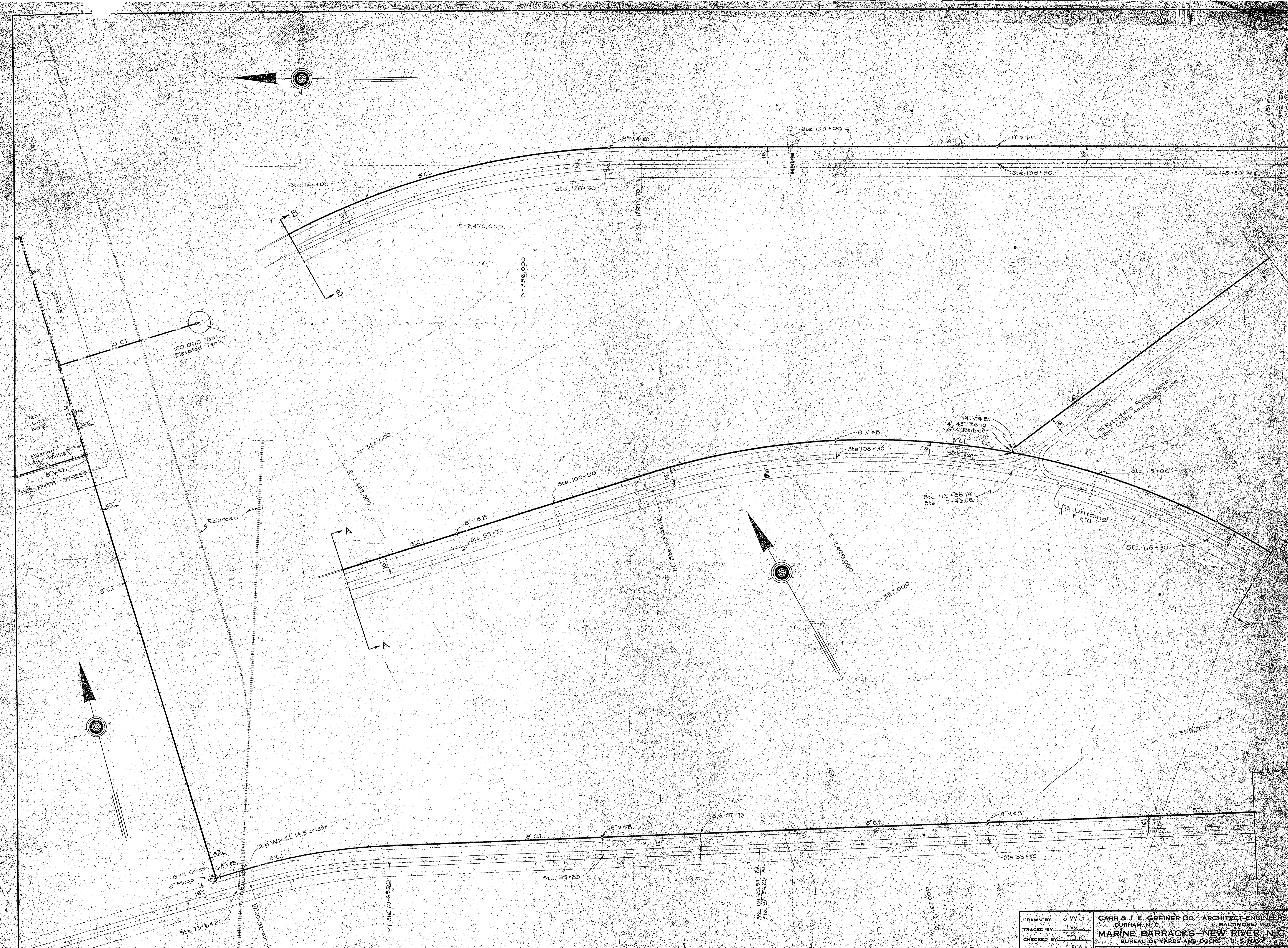
WATER & SEWER CROSSINGS
 ① → 4" Water Below 8' Sewer Top W.M. EL. 2.5
 ② → 4" Water Above 8' Sewer Top W.M. EL. 3.5

NOTES:
 Valves in all cases to be located 4.0' from the main, unless otherwise specified.
 Control Elevations shown for Water Mains are top of pipe in all cases.
 The Water Main along Flounder Road shall be placed in the Roadway Shoulder 16' from the $\frac{1}{2}$ at a minimum cover of 3.0'.

LEGEND
 V & B. VALVE AND BOX
 F.H. FIRE HYDRANT
 W & S. WATER AND SEWER CROSSINGS
 T.M.S.V. & B. TAPPING MACHINE SLEEVE VALVE & BOX

DRAWN BY <u>JWS</u>		CARR & J. E. GREINER CO. - ARCHITECT-ENGINEERS DURHAM, N. C.	
TRACED BY <u>JWS</u>		BALTIMORE, MD.	
CHECKED BY <u>D.H. Jr.</u>		MARINE BARRACKS - NEW RIVER, N.C.	
CHIEF DEPT. <u>FDK</u>		BUREAU OF YARDS AND DOCKS - U. S. NAVY	
IN CHARGE <u>W.C.M.</u>		WATER DISTRIBUTION SYSTEM TENT CAMP AMERICAN BASE	
DATE <u>Jan 28 1942</u>			
SCALE <u>1" = 100'</u>		162286	
Y. & D. DRAWING NO.		ARCHITECT-ENGINEERS SPECIFICATION	
APPROVED <u>Jan 28 1942</u>		BY <u>W.C.M.</u>	
RESIDENT OFFICER IN CHARGE		SHEET	
NO. <u>100</u>		M.B. PROJ. NO. <u>P-230-15</u>	
REVISION		DATE	
DATE		BY	
DATE		BY	





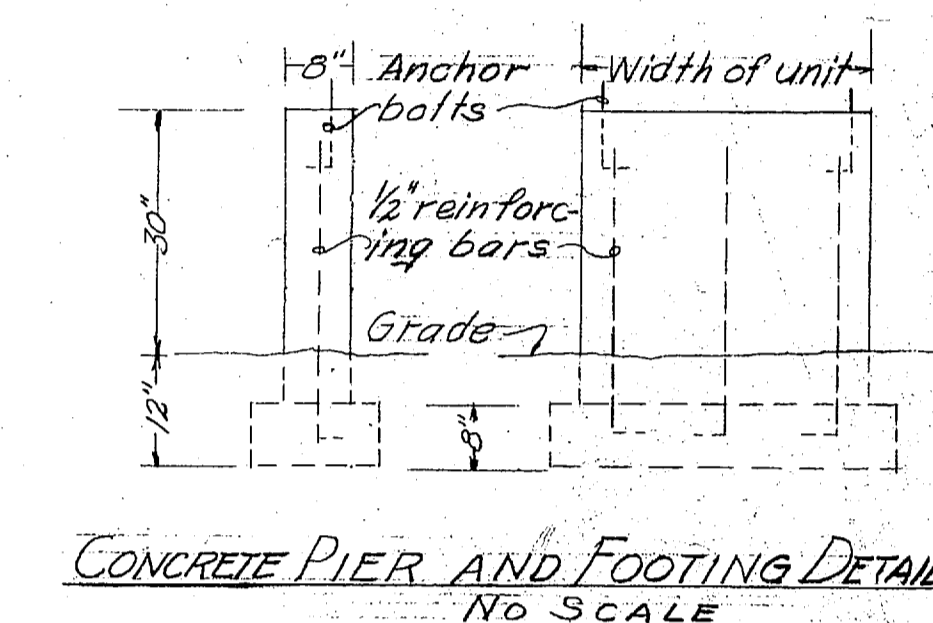
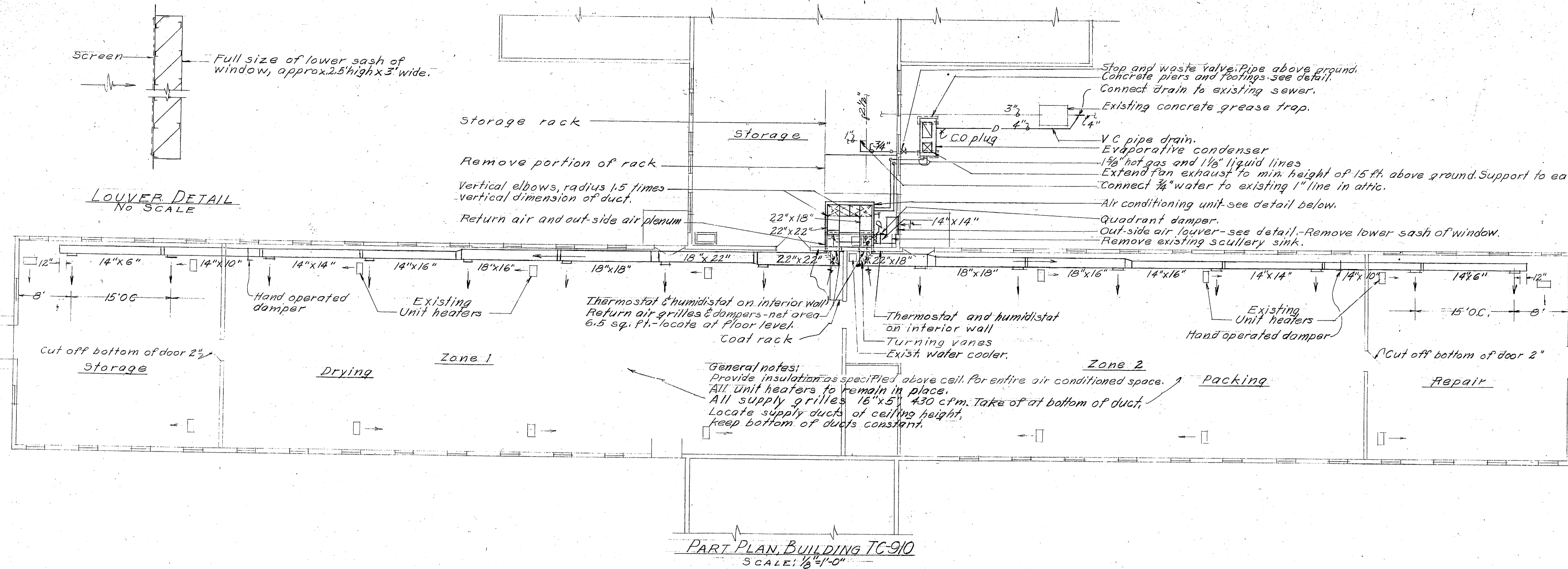
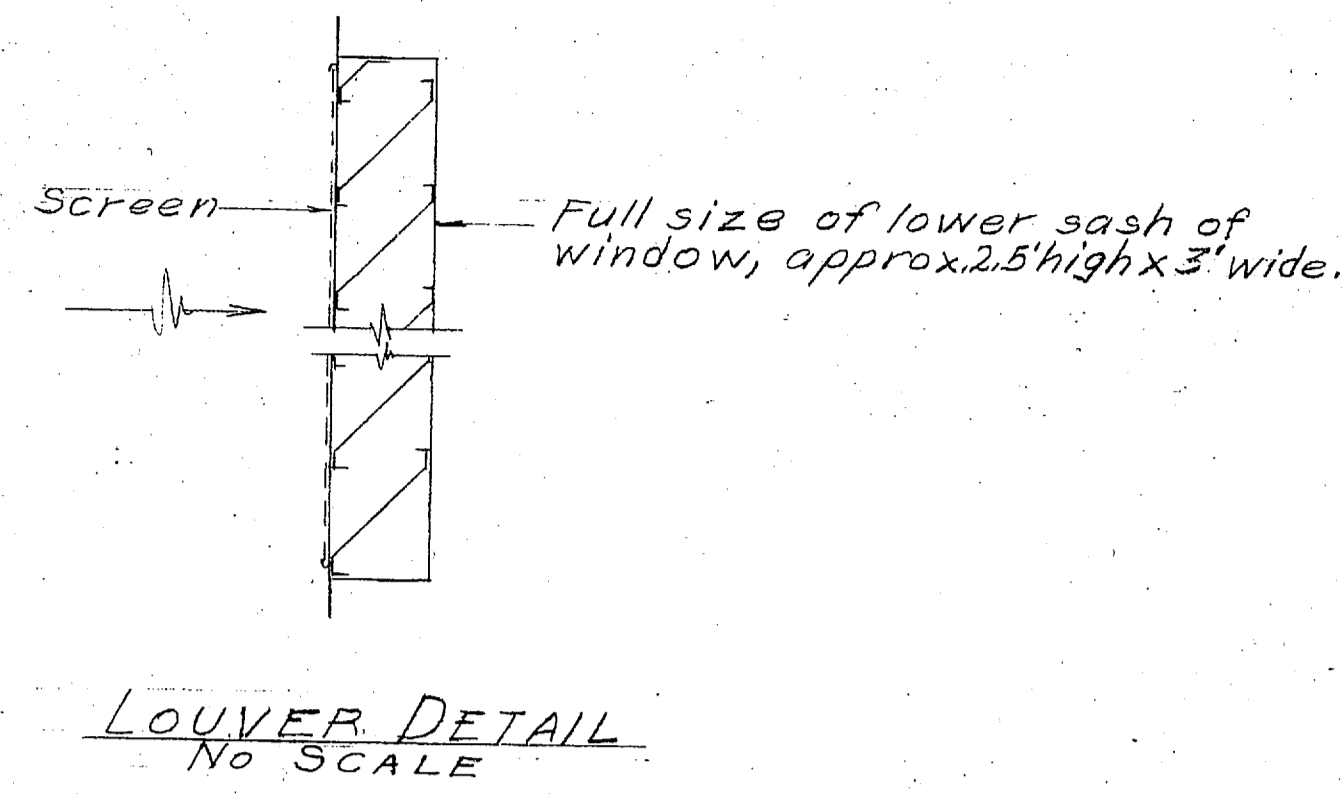
N-358.000
LEGEND
 V4B Valve and Box
 FH Fire Hydrant
 Water & Sewer Crossing
 Existing Water Mains

NOTES:
 Valves in all cases to be located 40' from the main unless otherwise specified.
 Control elevations shown for Water Mains are top of pipe in all cases.
 The Water Main along the Airport Approach Road shall be placed in the roadway shoulder 16' from the curb a minimum cover of 3.0'. Location of this Main with respect to the 4' of the road is not to scale.

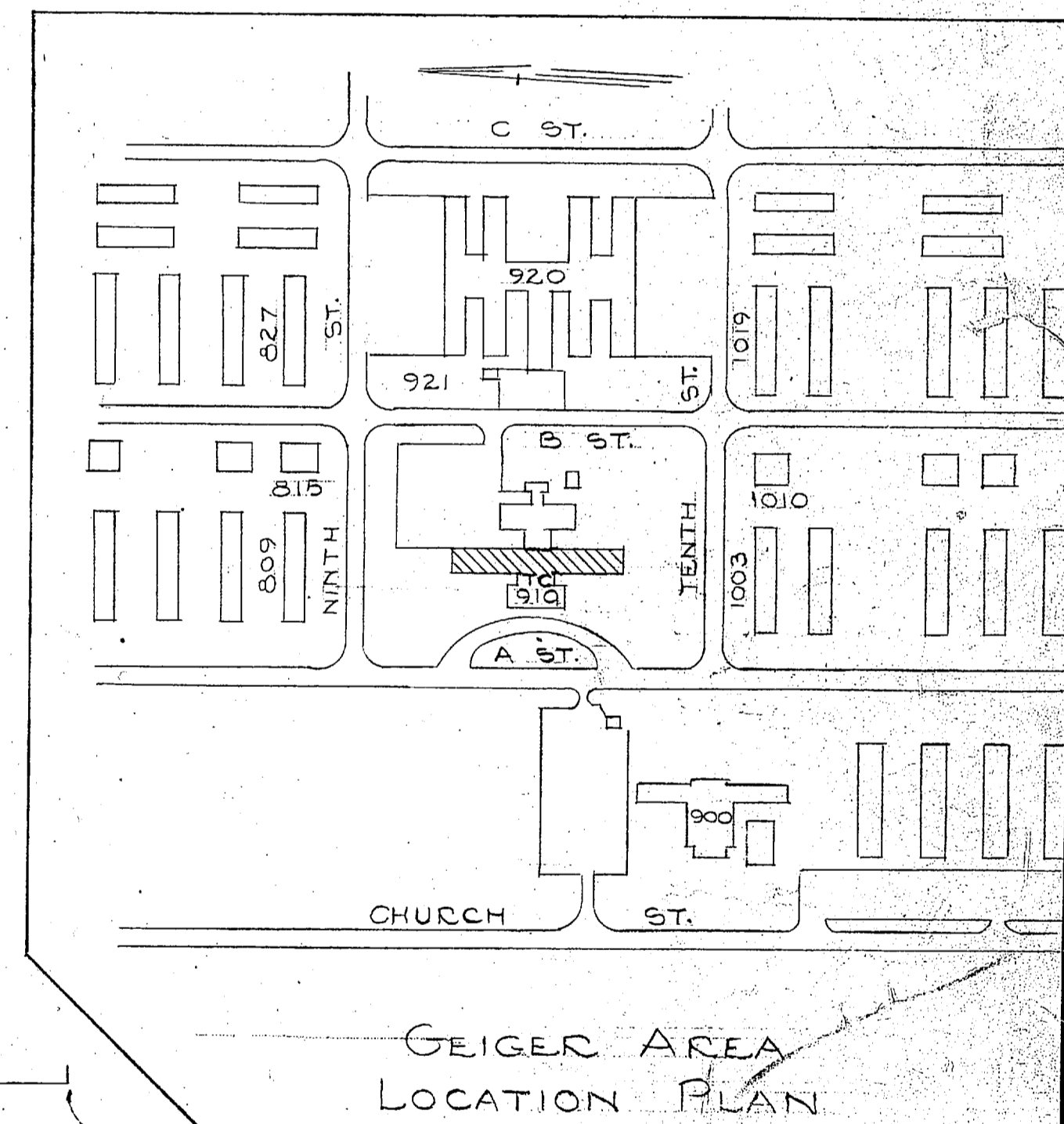
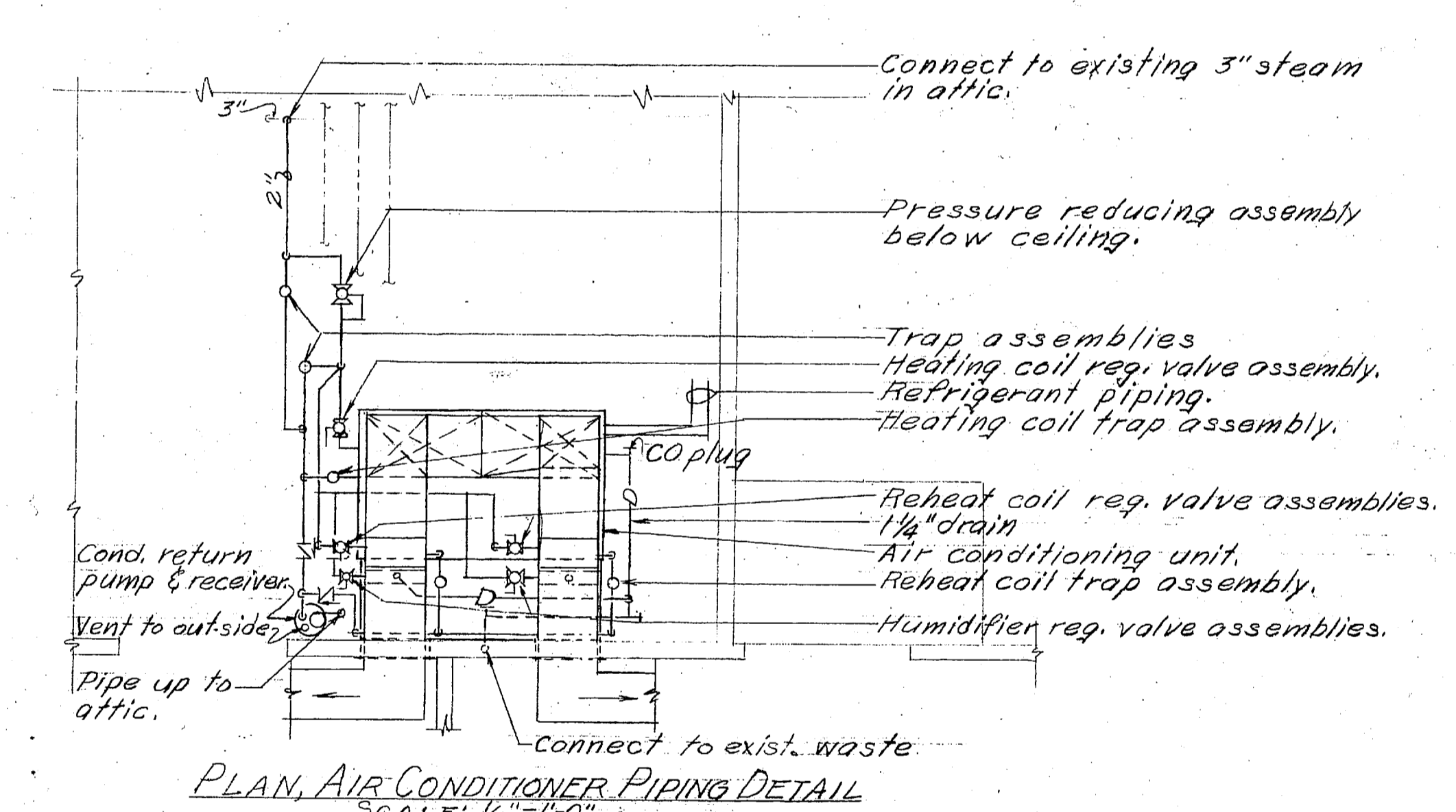
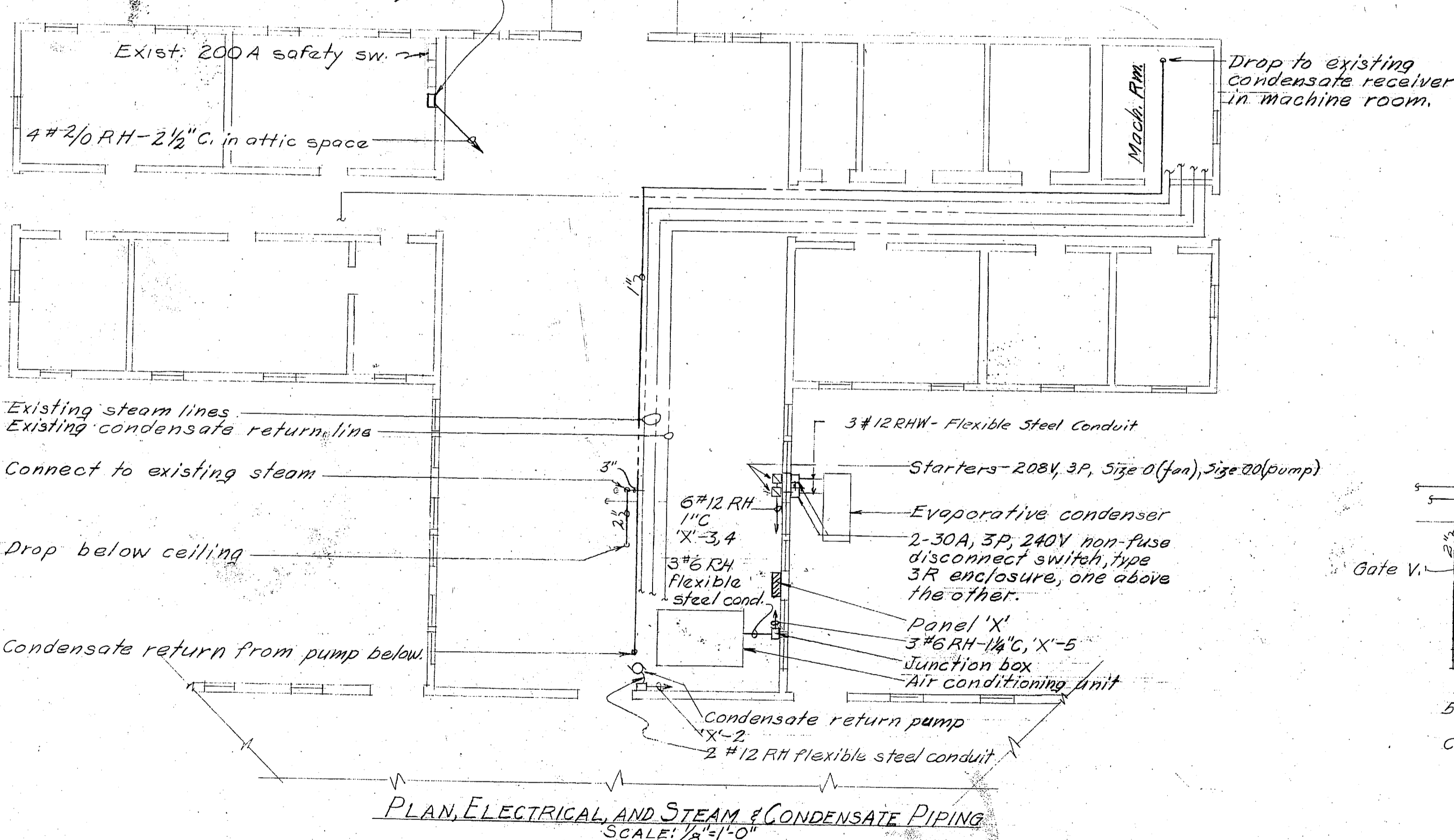
DRAWN BY	J.W.S.	CARR & J. E. GREINER CO. - ARCHITECT-ENGINEERS BUREAU OF YARDS AND DOCKS - U. S. NAVY MARINE BARRACKS - NEW RIVER, N. C. WATER FEEDER MAIN TO LANDING FIELD & TENT CAMP AMPHIBIAN BASE
TRACED BY	J.W.S.	
CHECKED BY	F.D.K.	
IN CHARGE	W.C.M.	
DATE	JAN 13 1942	
SCALE	1"=100'	APPROVED: <i>[Signature]</i> ARCHITECT-ENGINEER
V. & D. DRAWING NO.	162285	
NO.	100	

PRINTED ON THE TRADING PAPER
 OF THE PORTLAND CEMENT CO. OF CHICAGO - NEW YORK

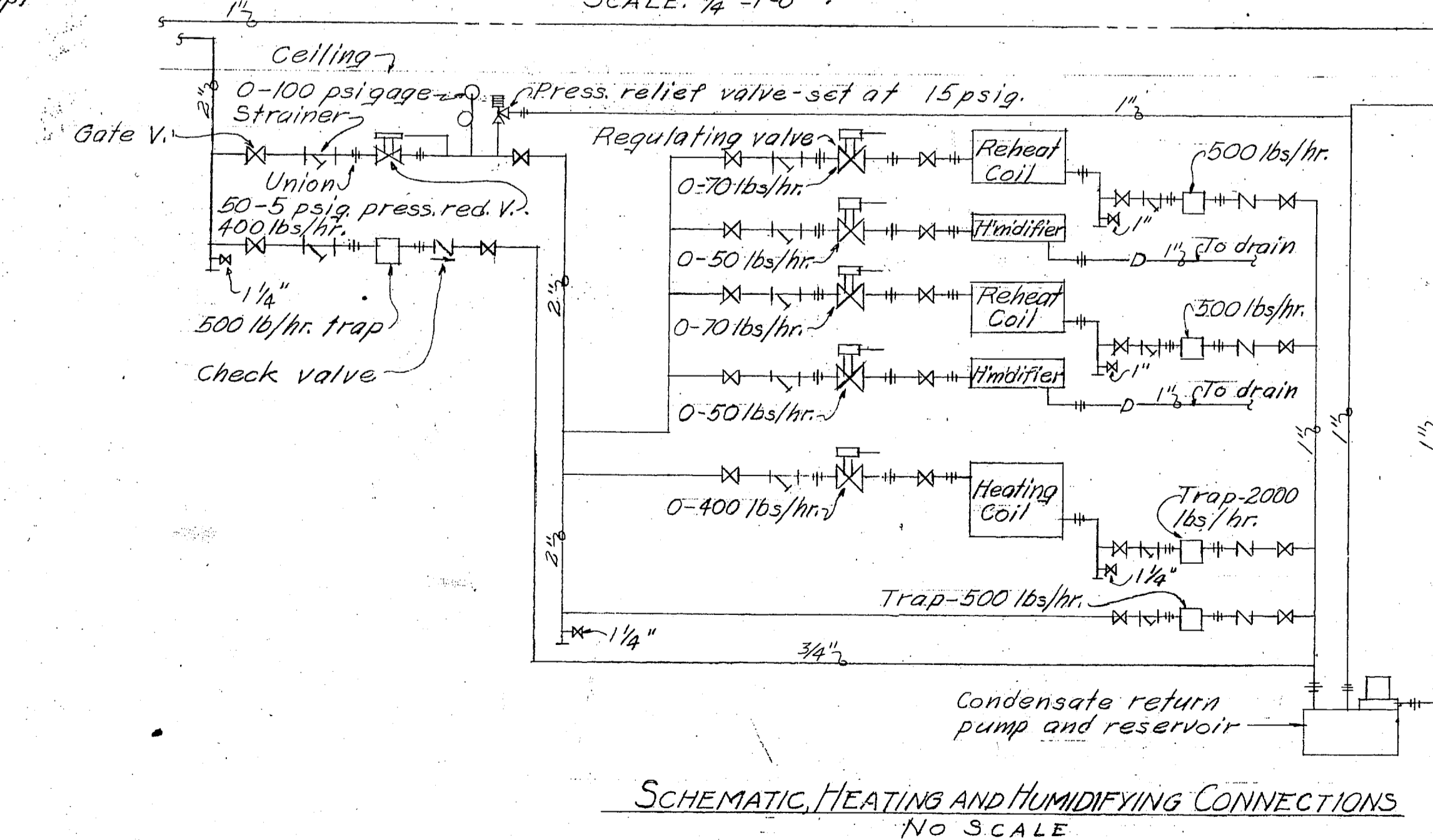
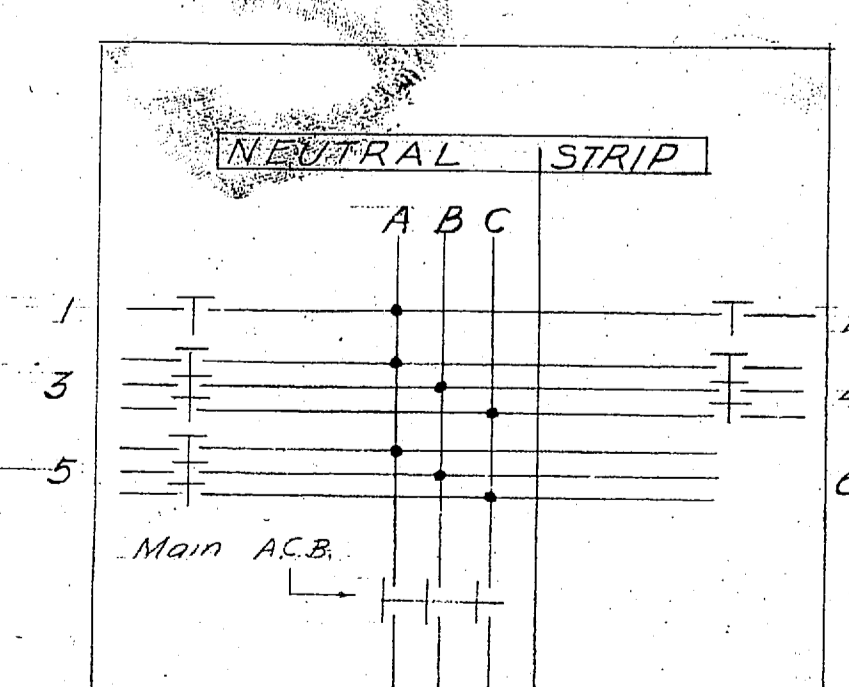




Provide one new 225A, 3P, 600 V, ACB, in type NEMA 1 enclosure, tie to line, side of the existing 200 A safety switch.



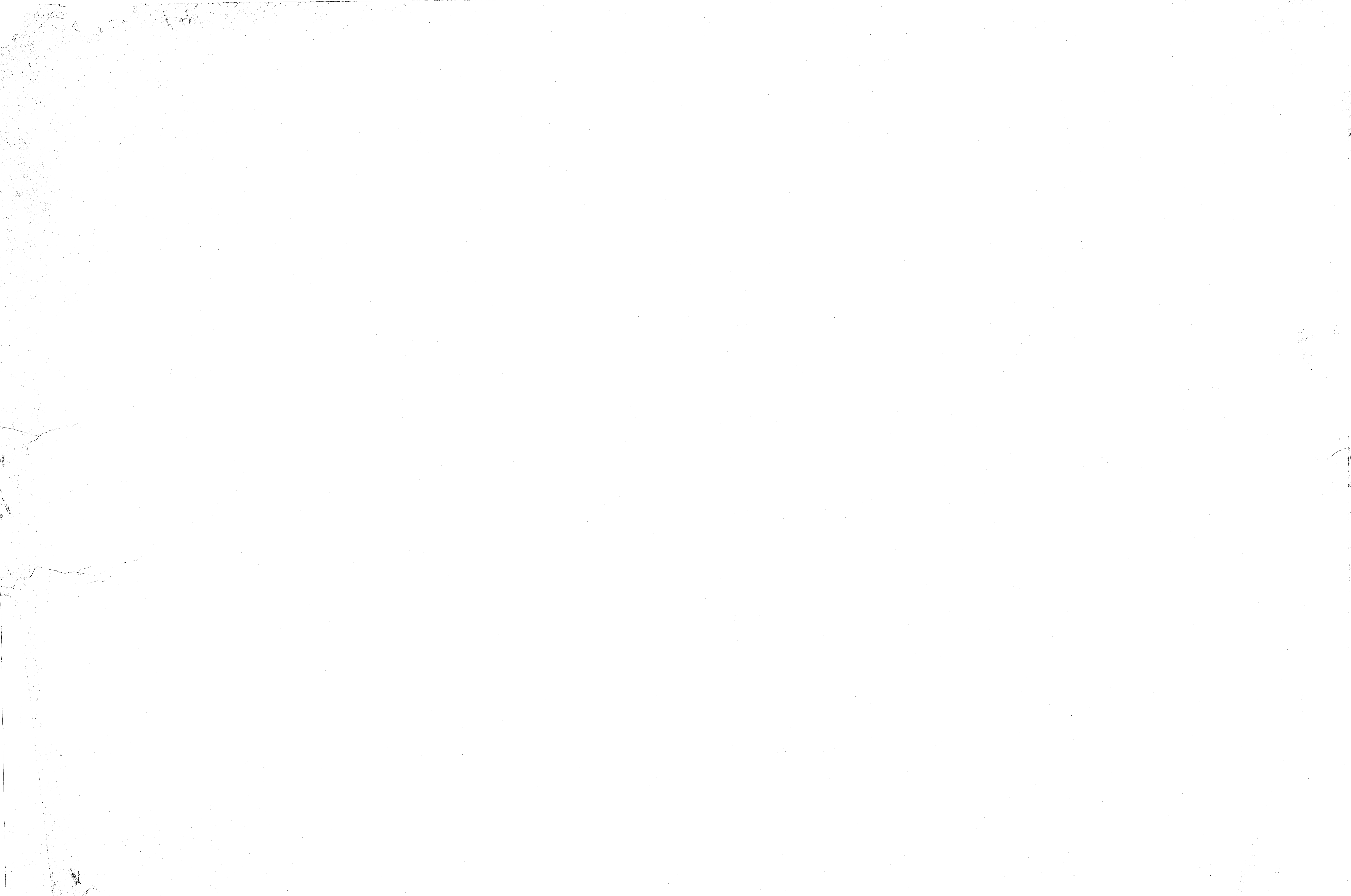
SCHEDULE NEW POWER PANEL 'X'					
CIRCUIT	CIRCUIT BREAKER	SIZE	LOCATION	BREAKER CLASS	
NUMBER	POLES	AMPS	WIRES		
1	1	15	#12	Control	C
2	1	15	#12	Condensate return pump	C
3	3	15	#12	Condenser pump	C
4	3	20	#12	Condenser fan	C
5	3	175	#6	Compressor and fan	E
6	-	-	-	Spaca	-
Main	3	200	#2/0	Feeder	E

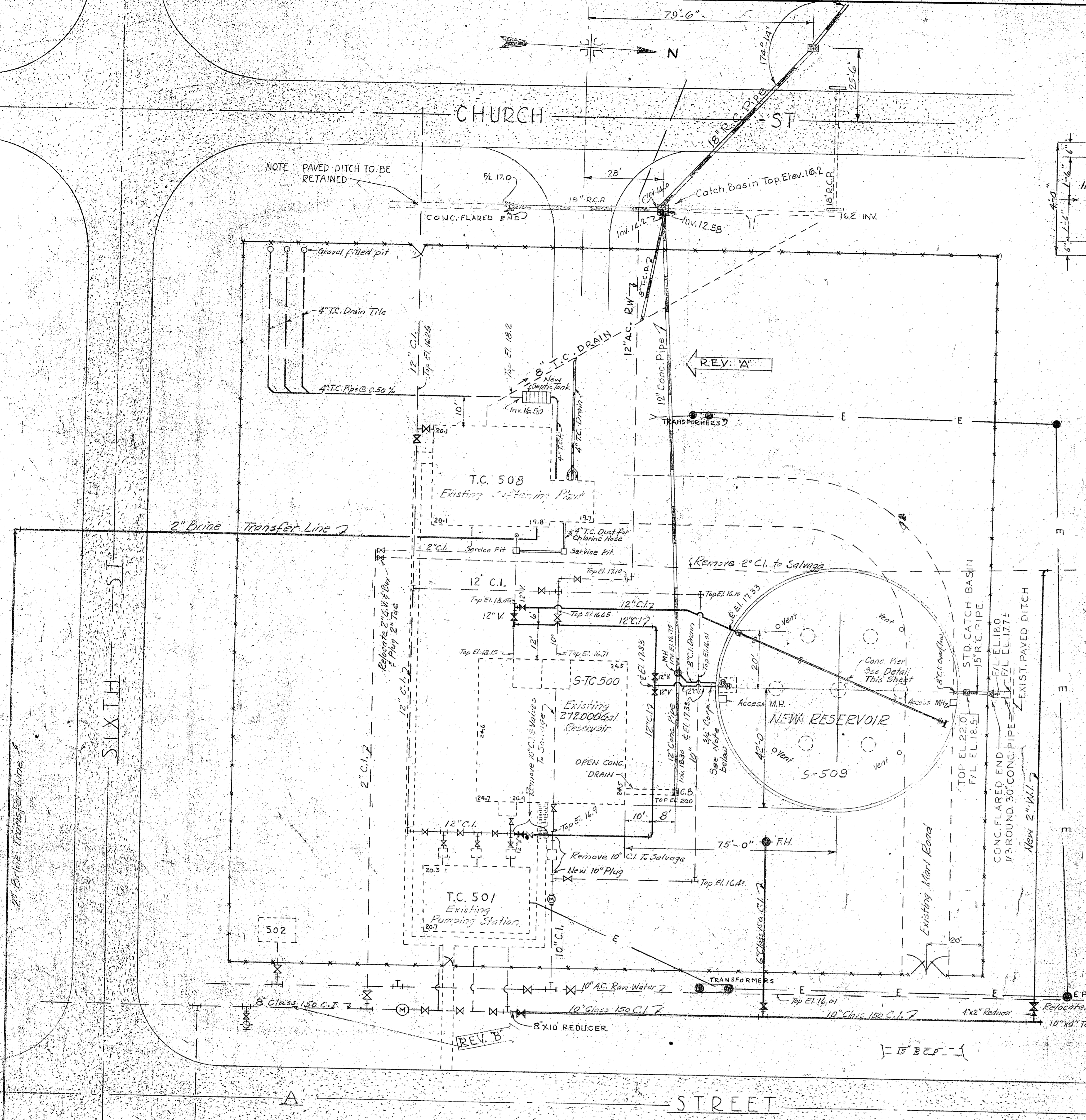


Note: Provide 1" insulation on steam line and 3/4" insulation on condensate line. See 21 V.D. Provide manufacturers standard jacket.

REVISION	DATE	APPD.	DESCRIPTION	BY
A	6-8-61	JK	As built	165
P W DRAWING NO:		MARINE CORPS BASE		
12458		CAMP LEJEUNE, N. C.		
DES		AIR CONDITIONING BLDG. NO. TC-910		
DRWN		PARACHUTE FACILITY		
TR		MECHANICAL & ELECTRICAL		
CHK		PLAN AND DETAILS		
SUPV		APPROVED		
DIR		FOR PUBLIC WORKS OFFICER		
DATE		3/22/63		
APPROVED FOR BUREAU OF YARDS & DOCKS		SCALE GRAPHIC SPEC. 46564/63		
DATE		SHEET 1 OF 1 NBY 46564		
DATE		Y & D DRAWING NO. 957458		

SATISFACTORY TO THE QUARTERMASTER GENERAL OF THE MARINE CORPS DATE



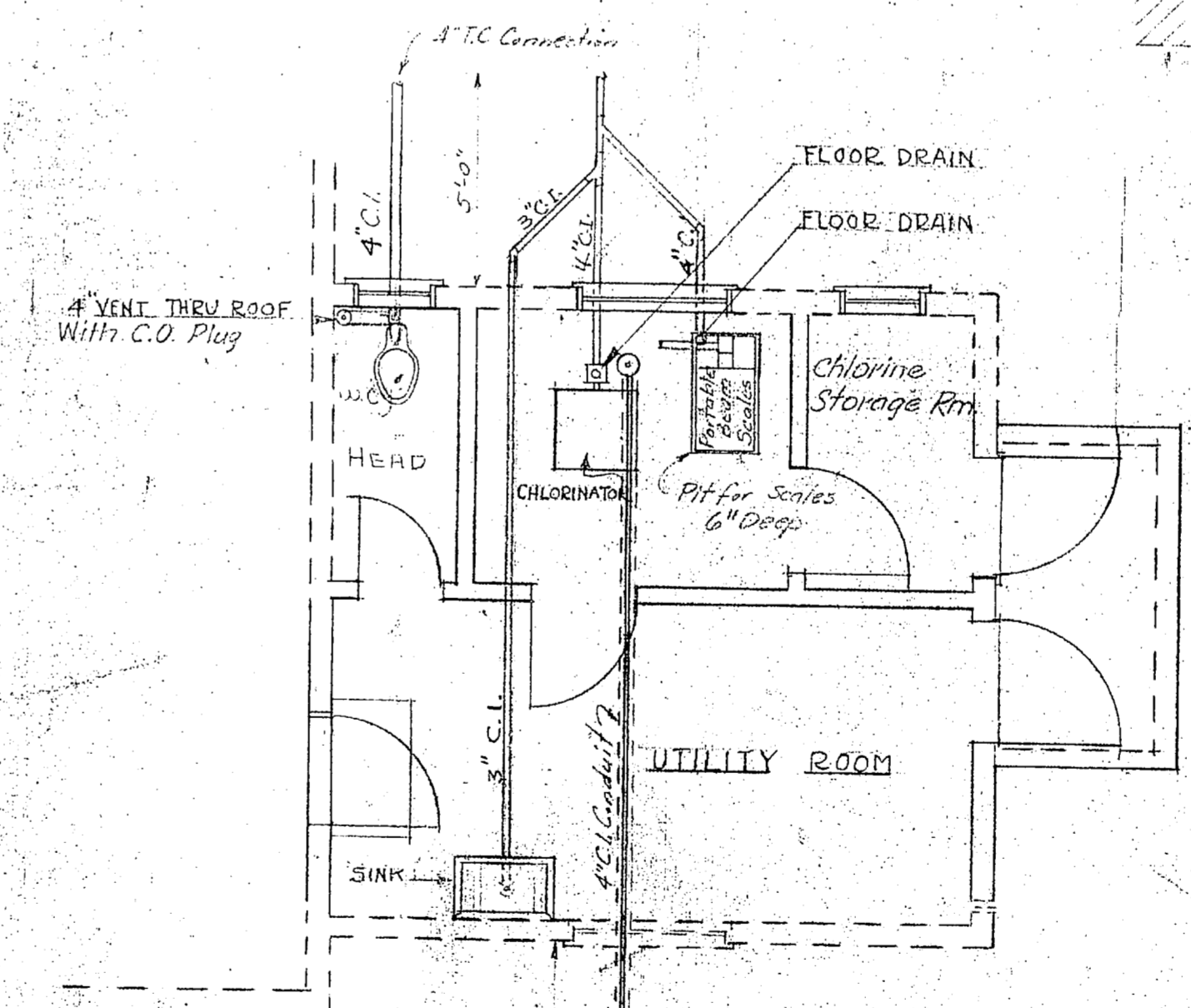
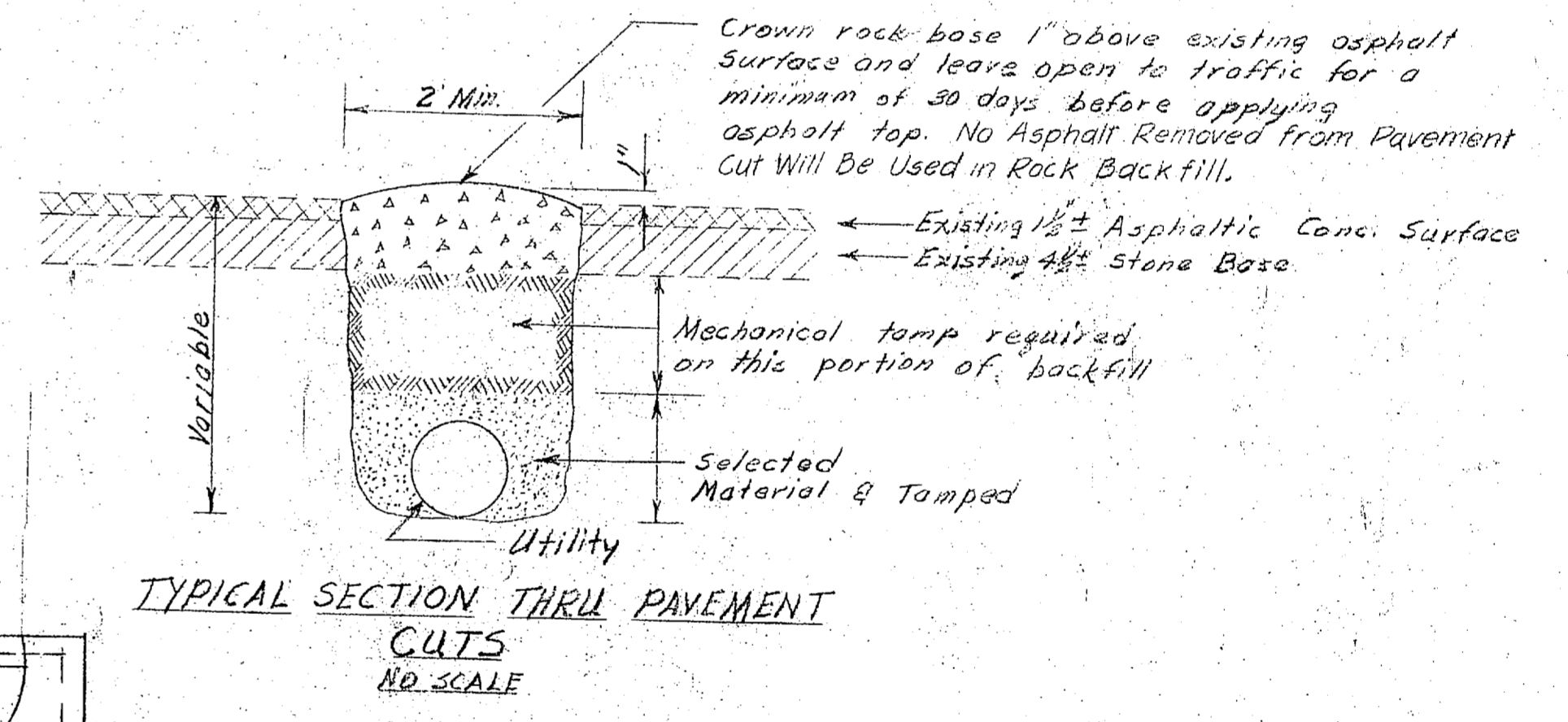
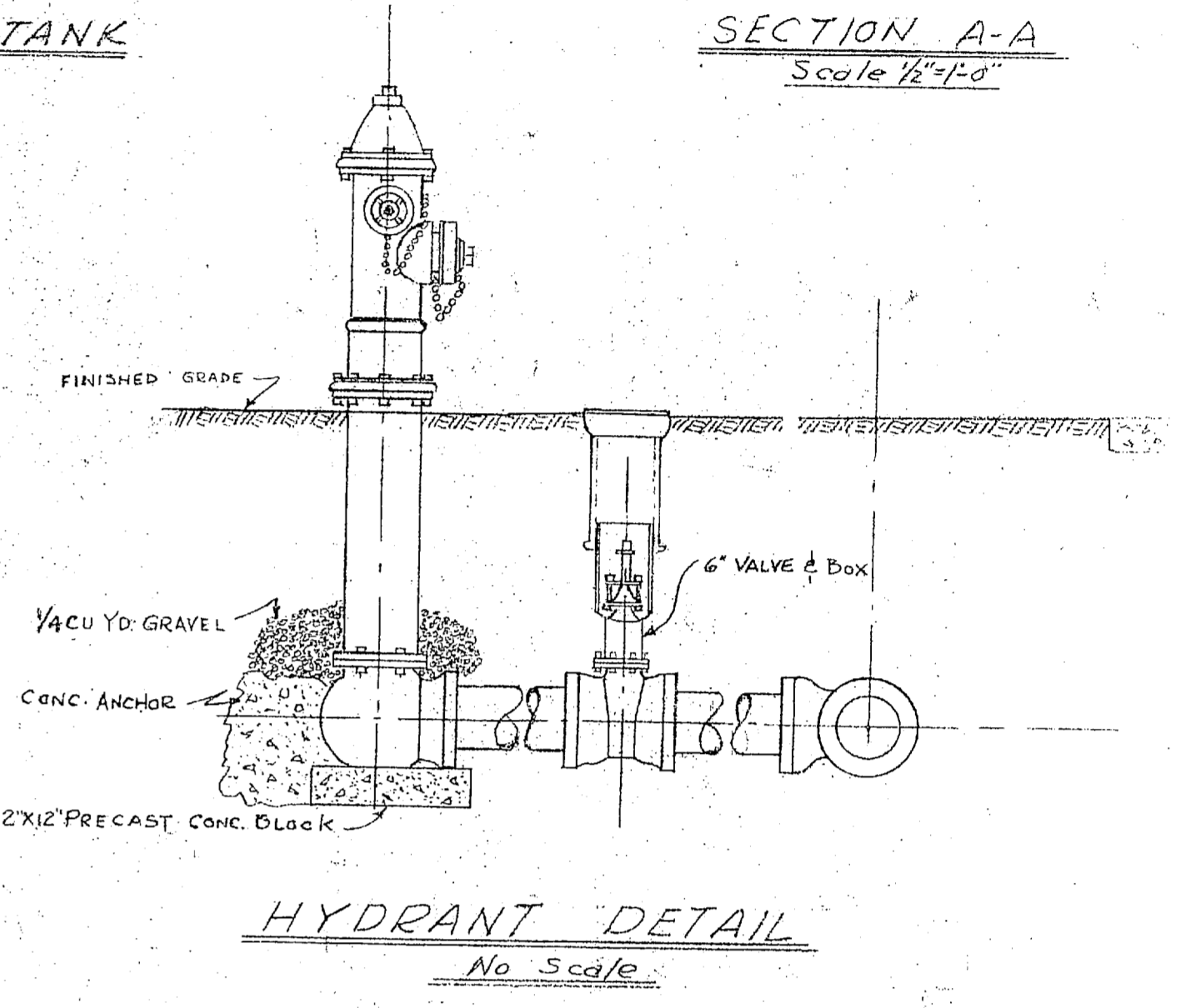
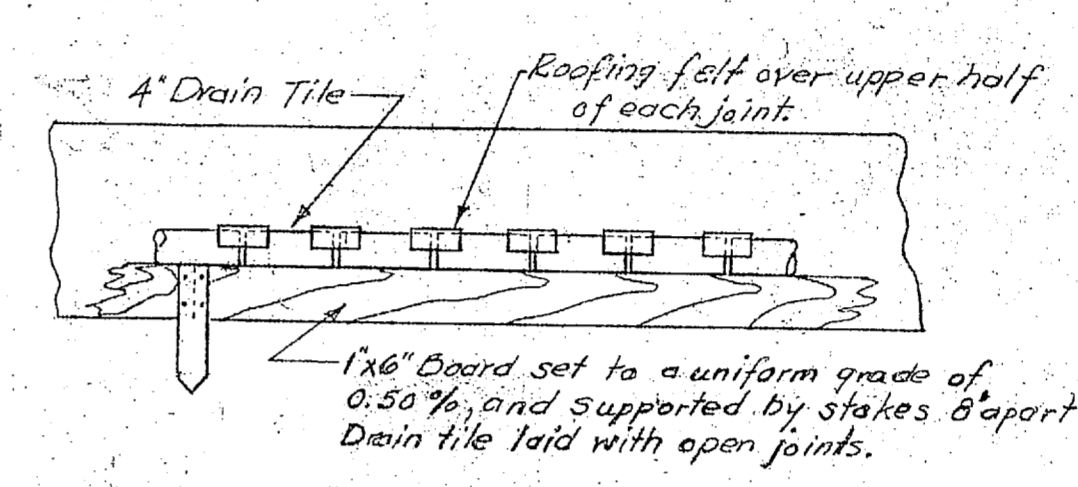
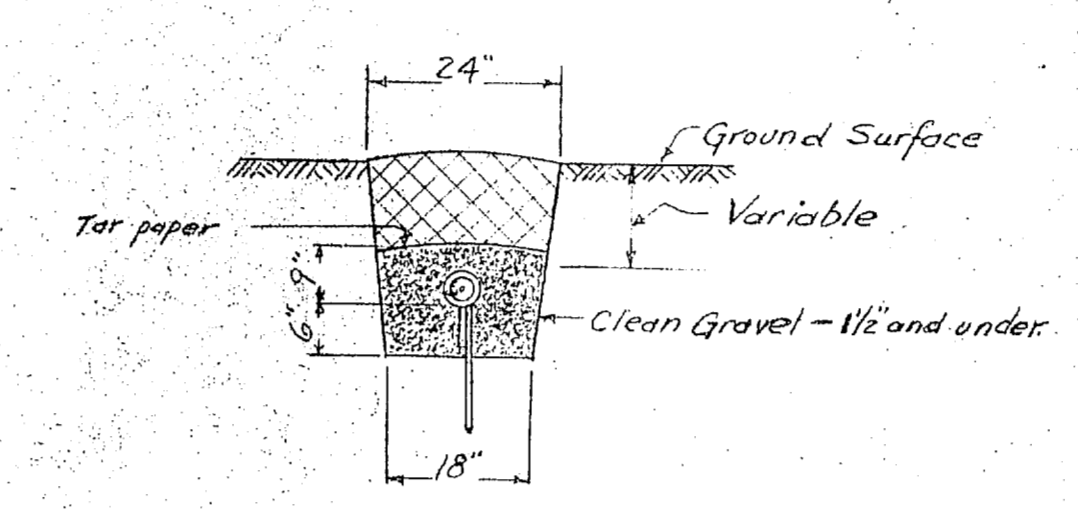
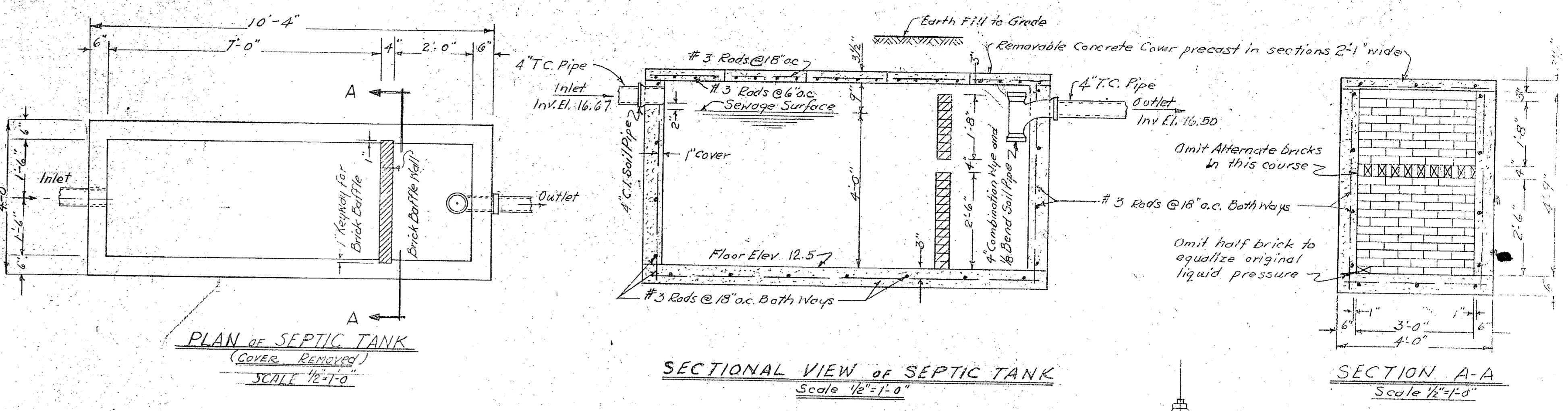
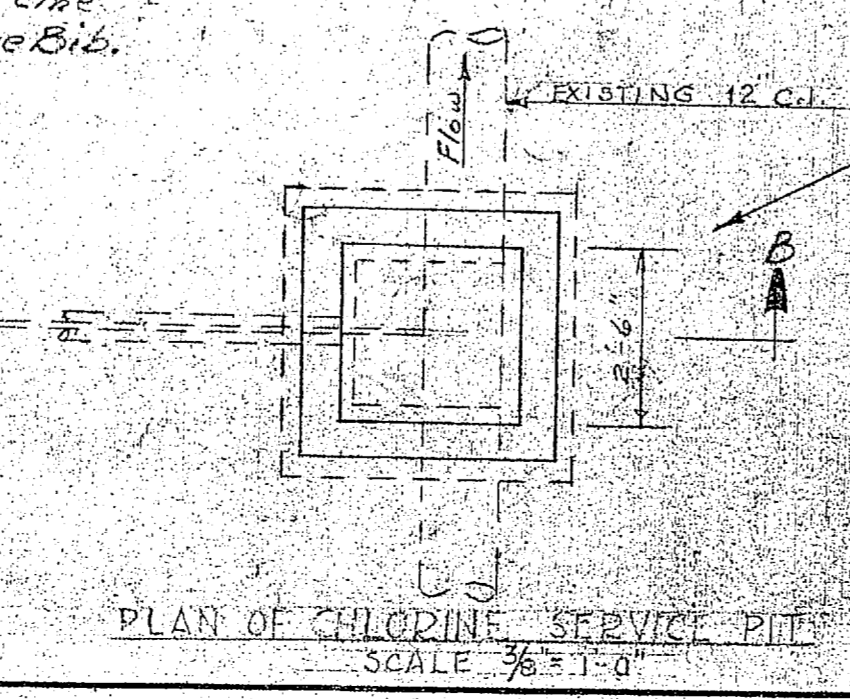
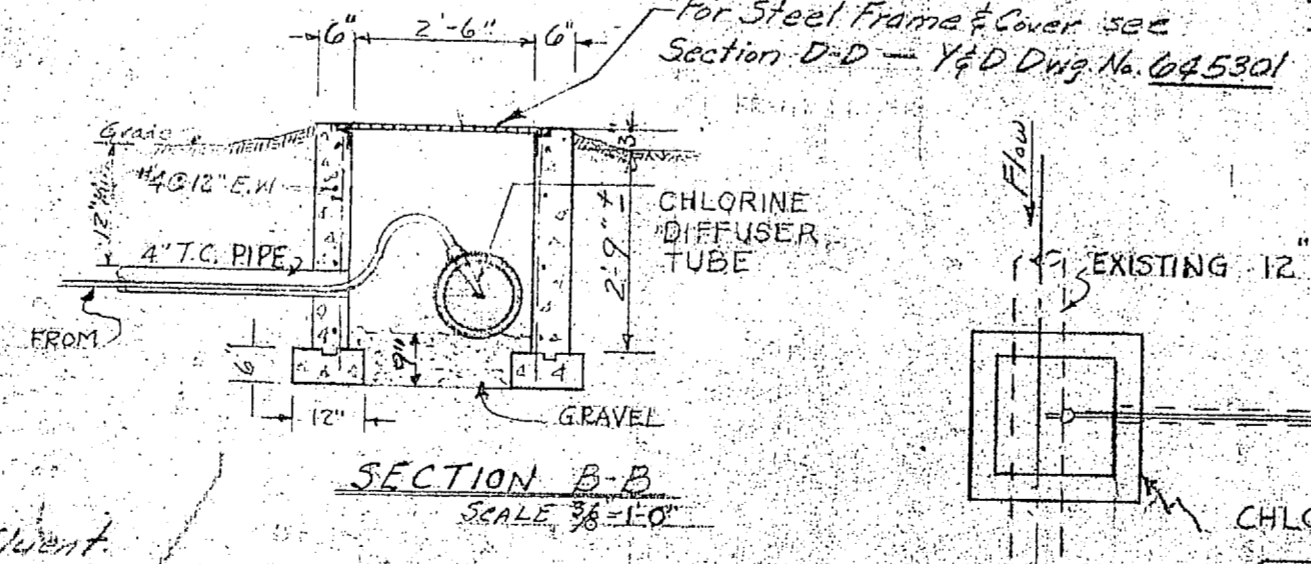


LEGEND

- EXISTING BUILDINGS OR STRUCTURES
- EXISTING ASPHALT PAVEMENT
- NEW CONC. PIPE - STORM SEWERS
- NEW STANDARD CATCH BASINS - MANHOLES
- NEW FLARED END CONC. PIPE SECTS.
- EXIST. PIPE HEADWALLS
- NEW WATER LINE & VALVE
- EXISTING WATER LINE & VALVE
- NEW SAN. SEWER LINE
- EXISTING WATER METER

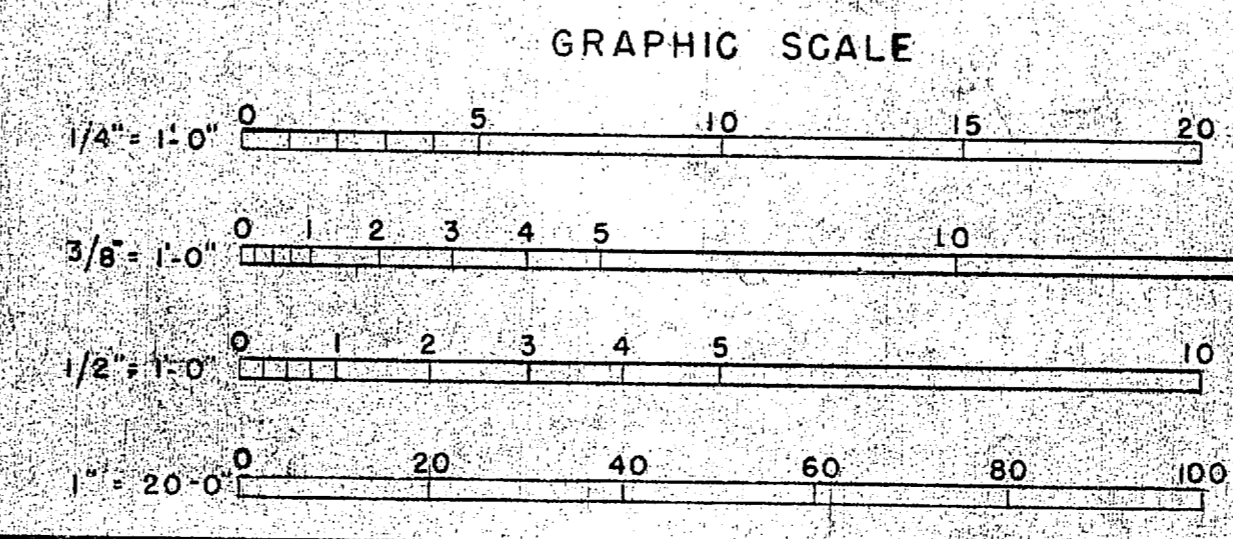
SCALE 1" = 20'-0"

Note:
Install 3/4" Corporation in 12" C.I. Effluent outside reservoir wall. Bring 3/4" line above finished grade with 3/4" hose bib.



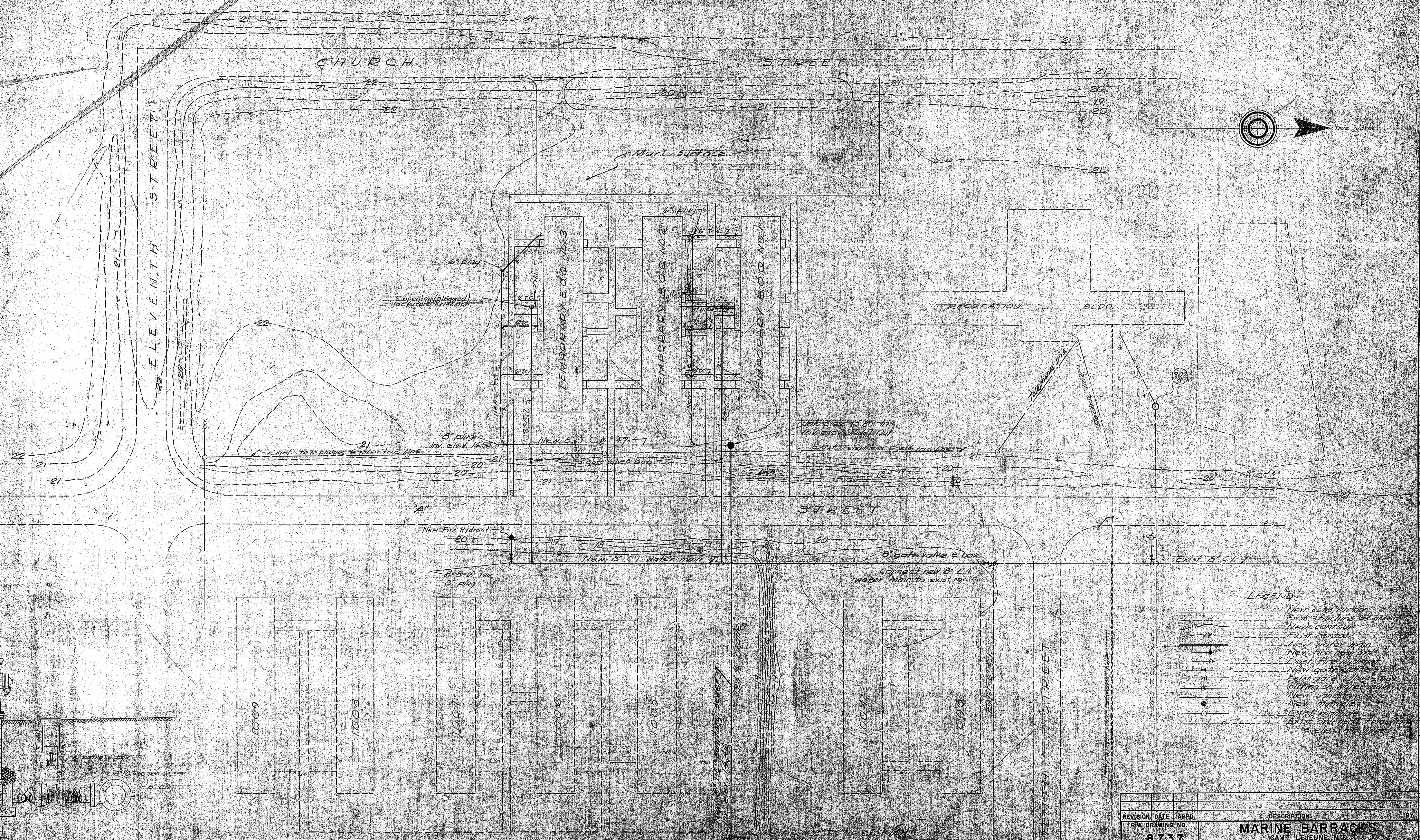
NOTE: DIMENSIONS & ELEVATIONS WHERE SHOWN ON DRAWINGS IN FIGURES SHALL BE USED IN PREFERENCE TO SCALED MEASUREMENTS.

CONCRETE PIERS UNDER 12" C.I.P. INSIDE RESERVOIR



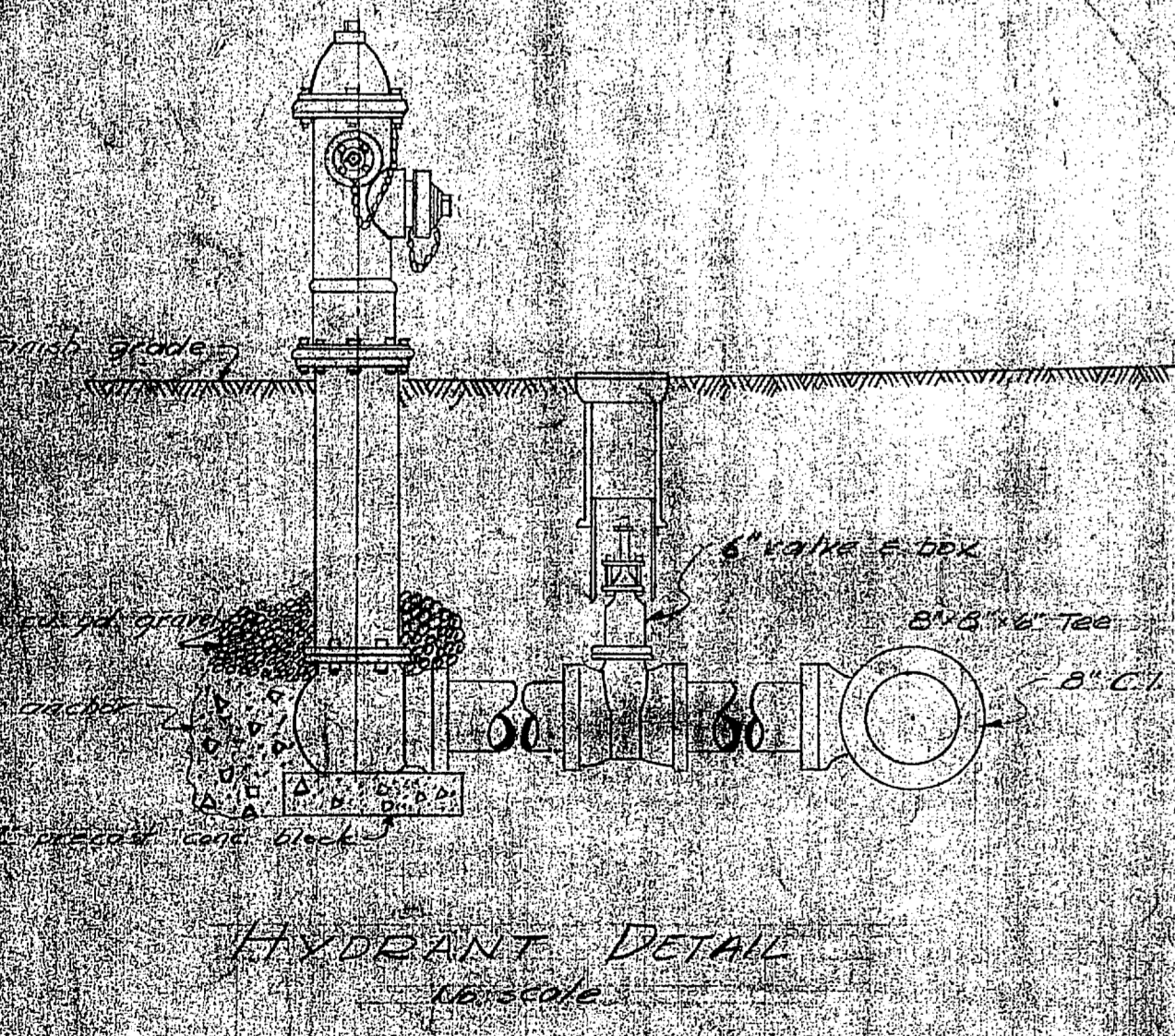
DES	AP/Howard	SCALE	GRAPHIC	SPEC	41919
DRWN	BAIN	SHEET	8 OF 9	NOV	23 1953
TR	BAIN	DATE	7 May 54		
CHK	H.P. Howard	APPROVED	PUBLIC WORKS OFFICER		
SUPV	W.D. Howard	DATE	7 May 54		
IN CHARGE	Howard	APPROVED FOR BUREAU OF YARDS & DOCKS	DATE		
		THE QUARTERMASTER GENERAL OF THE MARINE CORPS	DATE		
		DPWO FOR CHIEF OF BUREAU	DATE		
		Y & D DRAWING	645306		





- LEGEND**
- New construction
 - - - - Existing structure or utility
 - - - - New contour
 - - - - Existing contour
 - - - - New water main
 - - - - New fire hydrant
 - - - - Existing fire hydrant
 - - - - New gate valve & box
 - - - - Existing gate valve & box
 - - - - Fitting on water main
 - - - - New sanitary sewer
 - - - - Existing manhole
 - - - - Existing manhole & electric lines

REVISION DATE	APPRO.	DESCRIPTION	BY
P.W. DRAWING NO.		MARINE BARRACKS	
8737		CAMP LEJEUNE, N.C.	
DES. DATE		CAMP LEJEUNE	
DRAWN BY		THREE (3) TEMPORARY B.O.G.'S	
CHK. BY		WATER AND SEWER SYSTEMS	
SURV. BY			
APPROVED			
IN CHARGE			
APPROVED			
THE QUARTERMASTER GENERAL OF THE MARINE CORPS			
DATE			5.6.37



h901

~~Monte P.~~ #
CAMP GEIGER New BOP Area Sewer
Water