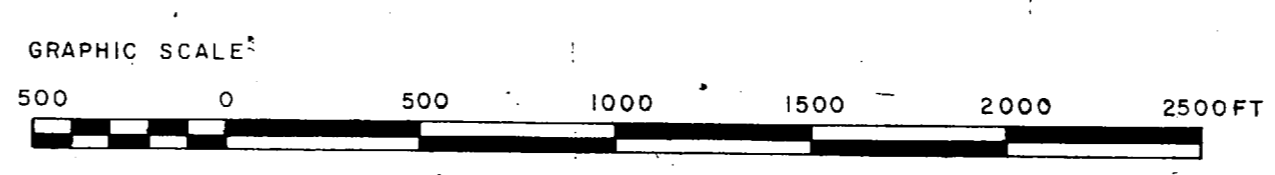


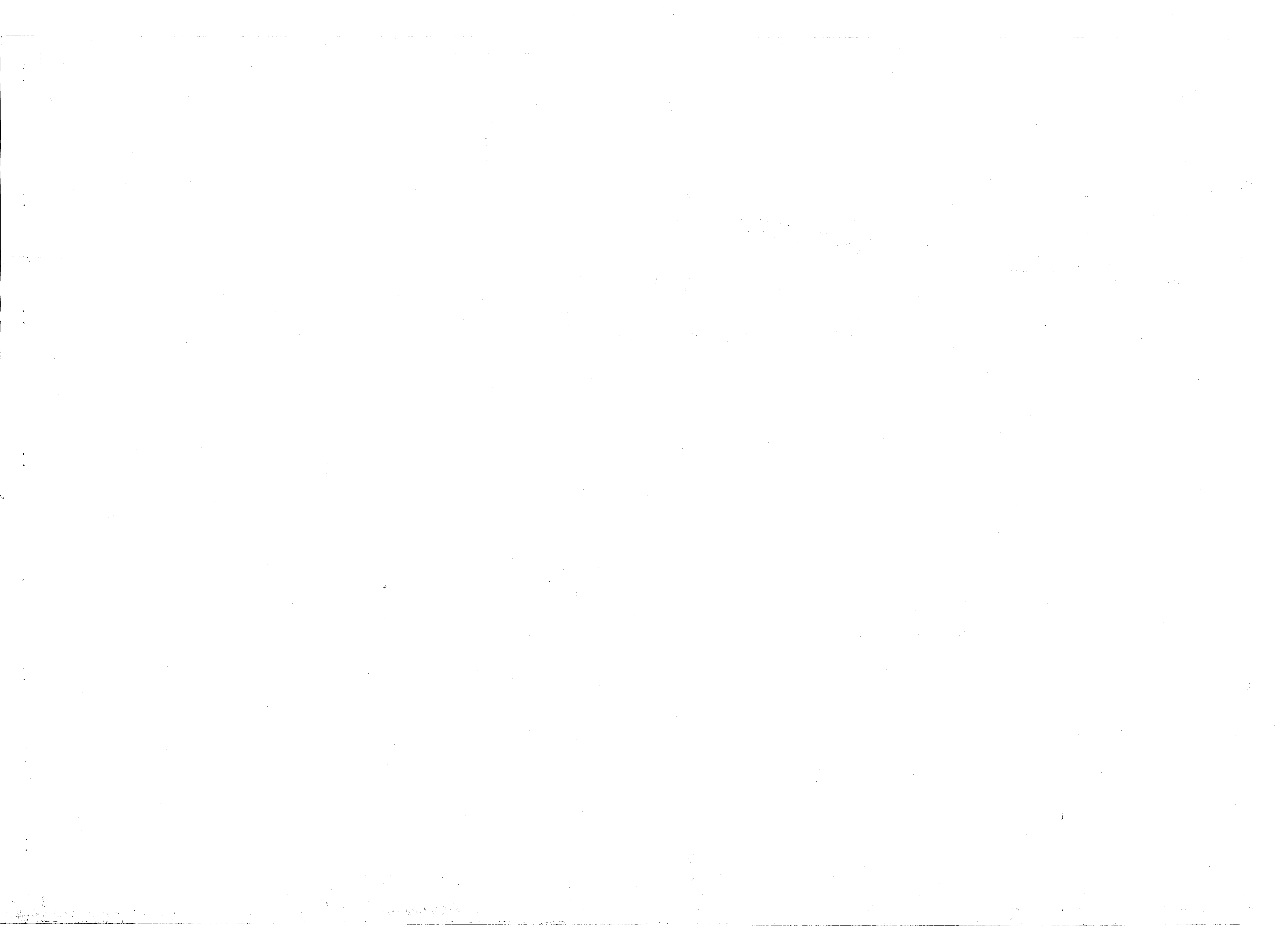
**LEGEND**

BUILDINGS & STRUCTURES	
ROADS, WALKS, PARKING AREAS, PAVED AREAS & AIRFIELD PAVEMENTS	
RAILROADS	
NAVY PROPERTY BOUNDARY	
R.R. RIGHT-OF-WAY LINE	
TRANSMISSION LINE	
SHORELINE	
RIVER FLOW	
DEPTH IN FEET	

LEGEND	EXISTING	NEW
STORM SEWER LINES		
MANHOLES (STORM)		
CATCH BASIN		

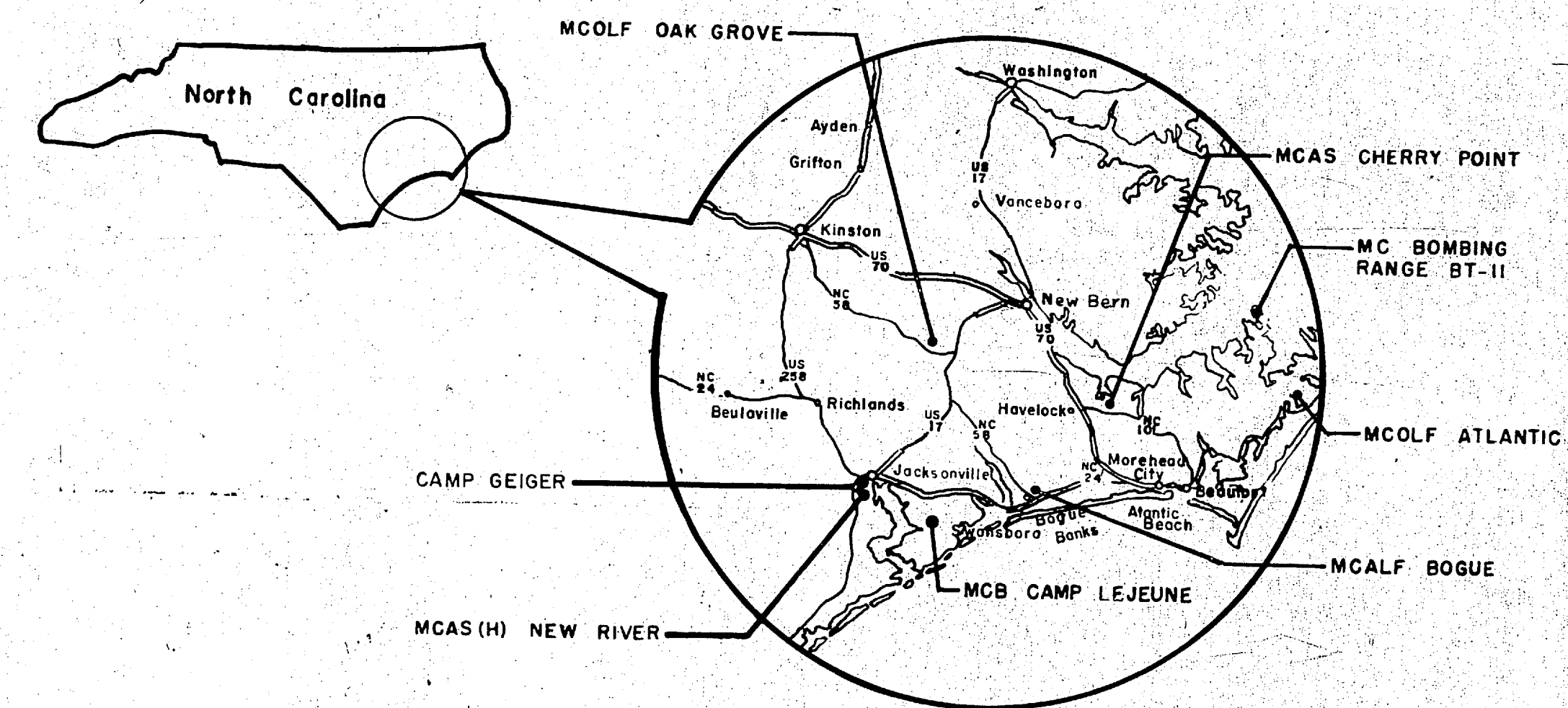
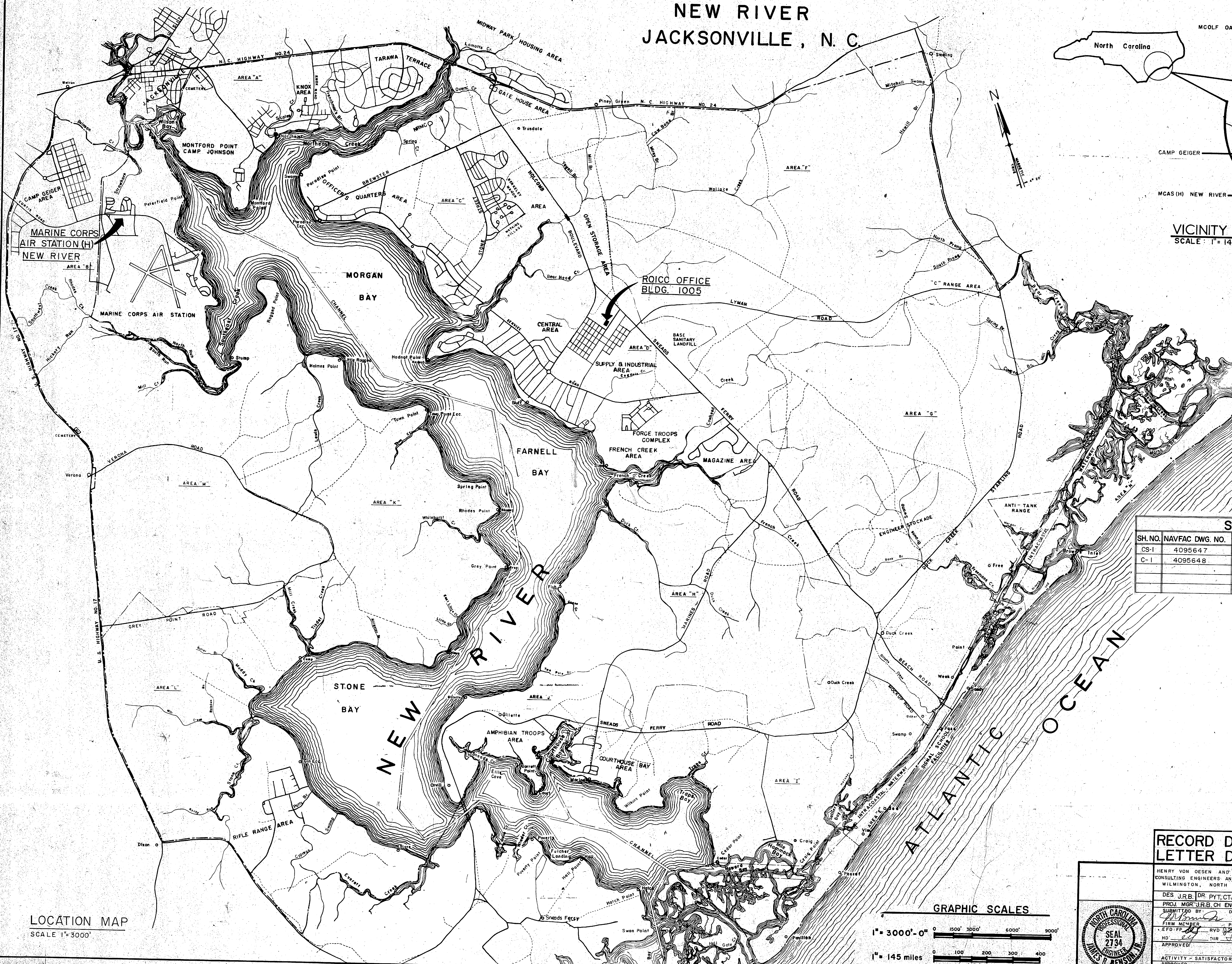


P. W. DRAWING NO.	MARINE CORPS BASE	
13377	CAMP LEJEUNE, NORTH CAROLINA	
DES.	E.G.J.	
CHK.		
APP.		
DATE		
<b>MCAS DRAINAGE</b>		
APPROVED	SUBMITTED	SCALE
PUBLIC WORKS OFFICER	COMMANDING GENERAL	SHEET OF
		N.2 DWG



# CLEAN WATER MAINS MARINE CORPS AIR STATION (H) NEW RIVER JACKSONVILLE, N. C.

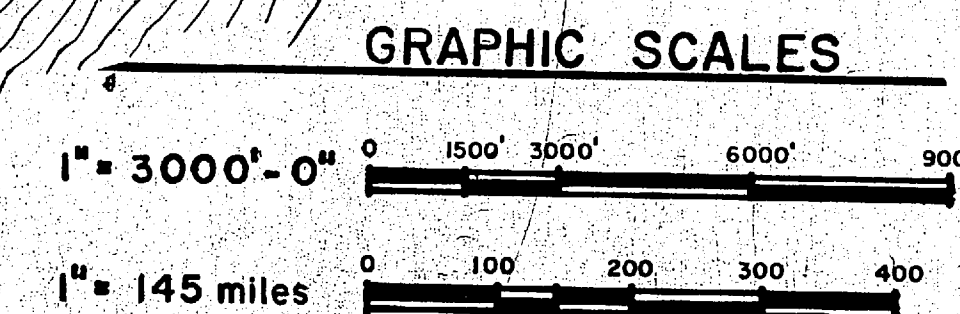
LET	DESCRIPTION	DATE	APPROVED
(A)	REVISED AS BUILT	10-8-82	<i>[Signature]</i>



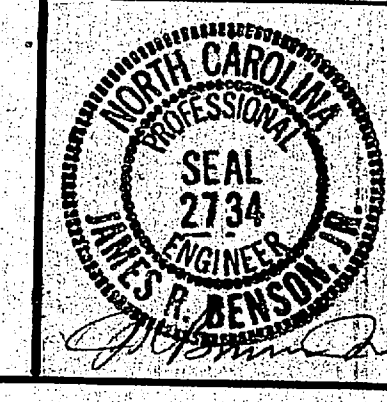
VICINITY MAP - CAMP LEJEUNE, N. C.  
SCALE: 1" = 145 miles

SCHEDULE OF DRAWINGS		
SH. NO.	NAVFAC DWG. NO.	TITLE
CS-1	4095647	LOCATION AND VICINITY MAPS
C-1	4095648	MCAS (H) NEW RIVER WATER SYSTEM PLAN

LOCATION MAP  
SCALE 1" = 3000'

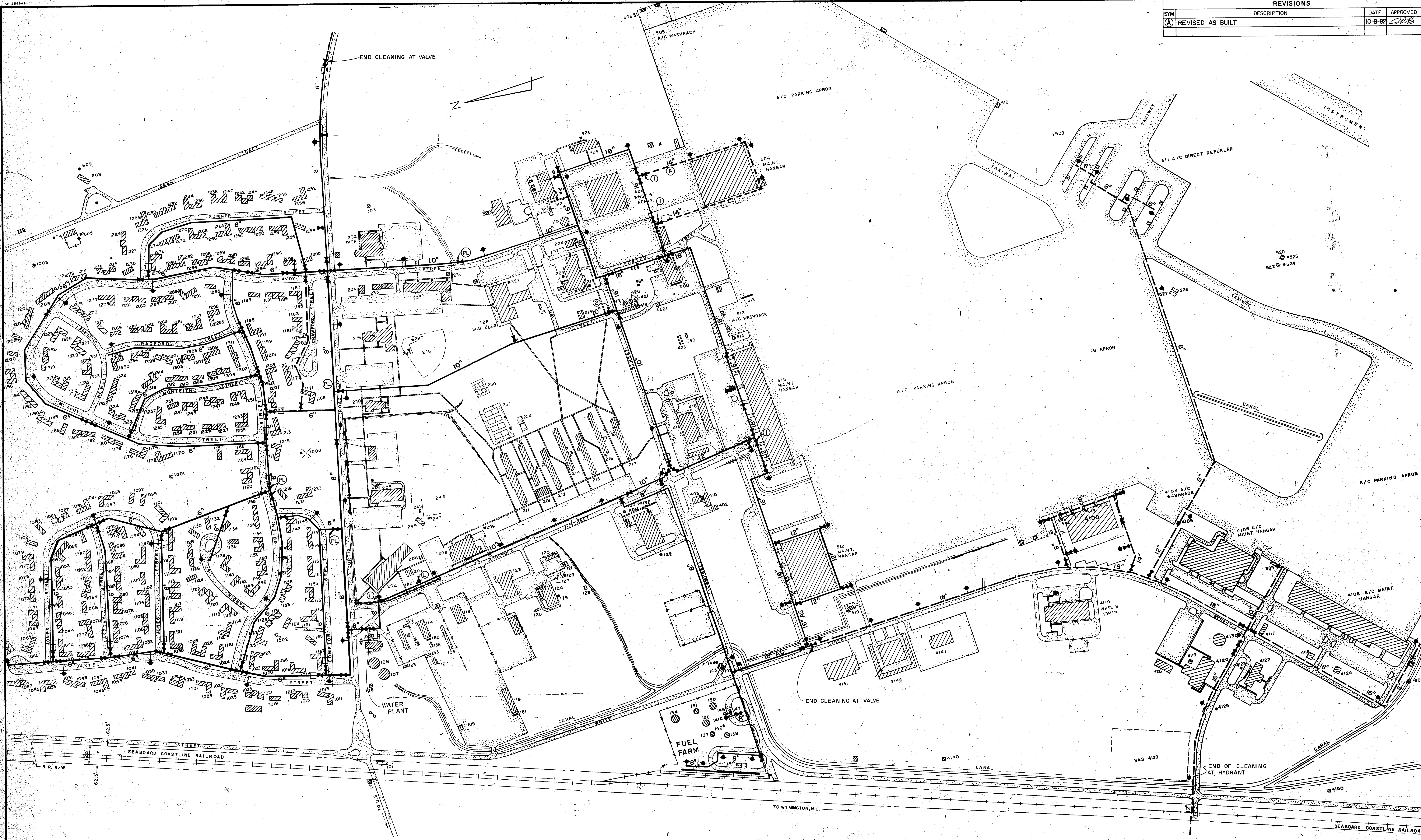


RECORD DRAWING LETTER DATED 10 JAN 1985		CS-1
HENRY VON OESSEN AND ASSOCIATES CONSULTING ENGINEERS AND PLANNERS WILMINGTON, NORTH CAROLINA		DEPARTMENT OF THE NAVY NAVAL FACILITIES ENGINEERING COMMAND ATLANTIC DIVISION
DES. J.R.B.   DR. P.Y.T.   CHK. J.R.B. PROJ. MGR. J.R.B.   CH. ENGR. H.V.O. SUBMITTED BY: <i>[Signature]</i> DATE: 9 MAR 1983 FIRM NUMBER: 249 RVD: 328 PRINCIPAL HD: <i>[Signature]</i> DIR: <i>[Signature]</i> APPROVED: DATE: 8 MAY 1983		NAVAL STATION CAMP LEJEUNE NORTH CAROLINA NORFOLK, VIRGINIA
ACTIVITY - SATISFACTORY TO APPROVED: DATE: 8 MAY 1983 FOR EFO FOR COMMANDER NAVFAC		LOCATION AND VICINITY MAPS F 80091 NAVFAC DRAWING NO. 4095647 CONSTR. CENTER NO. N62470-82-B-2319 SCALE: AS SHOWN SPEC: 05-82-2319 SHEET 1 OF 2

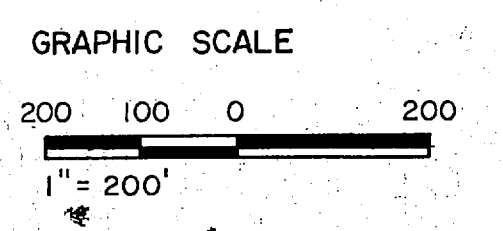




REVISIONS			
SYM	DESCRIPTION	DATE	APPROVED
(A)	REVISED AS BUILT	10-8-82	JRB

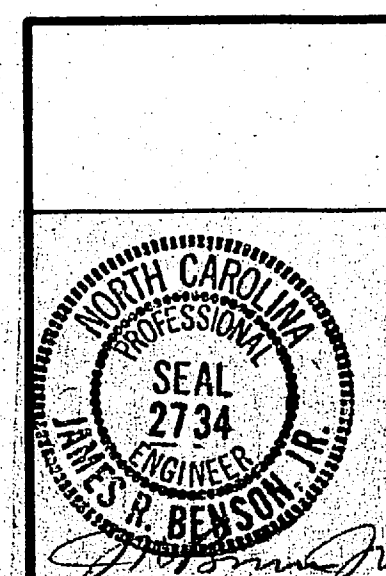


- LEGEND**
- WATER MAIN TO BE CLEANED
  - WATER MAIN (NOT CLEANED)
  - VALVE
  - HYDRANT
  - VALVE - INOPERABLE
  - VALVE - CANNOT LOCATE
  - EXCAVATION FOR CLEANING
  - LEAK
  - POSSIBLE LEAK



**RECORD DRAWING**  
**LETTER DATED** 10 JAN 1985

**C-1**



HENRY VON OESSEN AND ASSOCIATES CONSULTING ENGINEERS AND PLANNERS WILMINGTON, NORTH CAROLINA		DEPARTMENT OF THE NAVY NAVAL FACILITIES ENGINEERING COMMAND	
DES. JRB DR PYT CHK JRB		ATLANTIC DIVISION	
PROJ. MGR JRB CH ENGR HVO		NAVAL STATION NORFOLK, VIRGINIA	
SUBMITTED BY [Signature] DATE 7 May 83		CAMP LEJEUNE NORTH CAROLINA	
FIRM MEMBER RVD [Signature] PRINCIPAL		CLEAN WATER MAINS MCAS (H) NEW RIVER	
APPROVED DATE		WATER SYSTEM PLAN	
ACTIVITY - SATISFACTORY TO [Signature]		SIZE CODE IDENT. NO. NAVFAC DRAWING NO. 4095648	
APPROVED DATE 27 May 1983		CONSTR. CONTR. NO. N62470-82-B-2319	
APPROVED FOR COMMANDER NAVFAC		SCALE: 1" = 200' SPEC. 05-82-2319 SHEET 2 OF 2	

LOU HUGHS