



# BIOLOGICAL ANALYSIS OF RIVER WATER

MCBCL 11330/6

Calibrated  
E 7.0 Buffer

DATE COLLECTED

26 March 1979

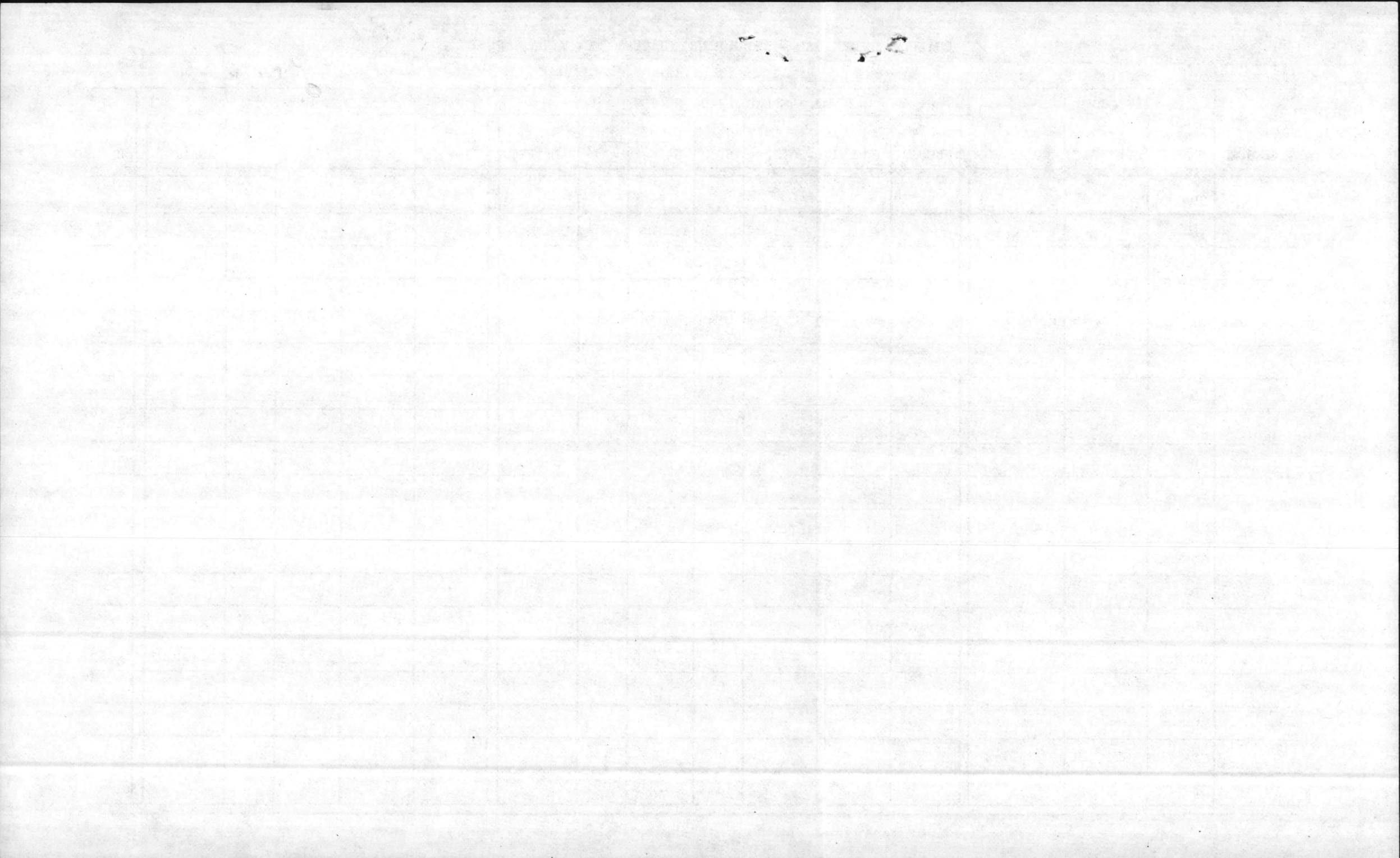
*winkler*

*ONG*

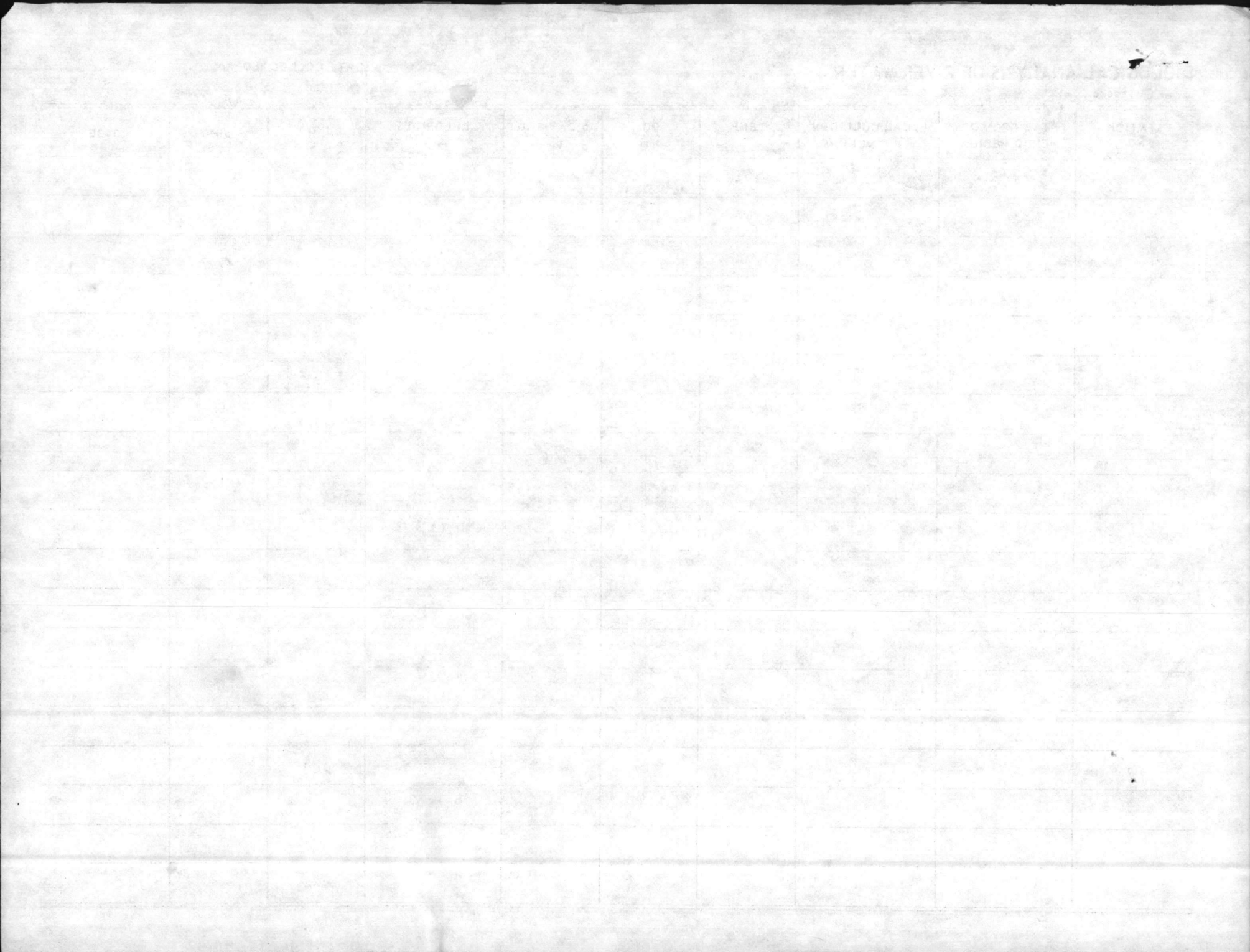
STATION NO.	TOTAL COLIFORM MEMO MEDIUM	FECAL COLIFORM m F C MEDIUM	TEMP C	DO ppm	5 DAY BOD ppm	CHLORIDES ppm	P. H.	WIND	TIDE
01	0920 (1) 50	300 TNTC	14	6.9	5.2	6.9	1.7	0.0	6.9
02	0935 (1) (50)	700 TNTC	14	8.1	4.2	8.1	3.9	0.0	7.1
03	0940 (1) 50	0 62	14	8.6	3.2	8.5	5.4	0.0	7.6
04	0955 (1) 50	0 10	14	9.2	4.3	9.4	4.9	0.0	7.7
05	1010 (1) (100)	0 0	14	8.7	3.7	8.5	5.0	0.0	7.8
06	1030 (1) (100)	0 0	14	8.2	3.9	8.4	3	0.0	7.9
07	1100 (1) (100)	0 0	14	8.6	6.1	8.2	5	0.0	7.9
08	1120 (1) (100)	0 4	14	8.1	6.1	8.1	2.0	0.0	7.9
09	1110 (1) (100)	0 0	14	8.2	5.9	8.2	3	0.0	7.9
	<i>Dark</i>		<i>Dark</i>	<i>Dark</i>	<i>Dark</i>	0.0			



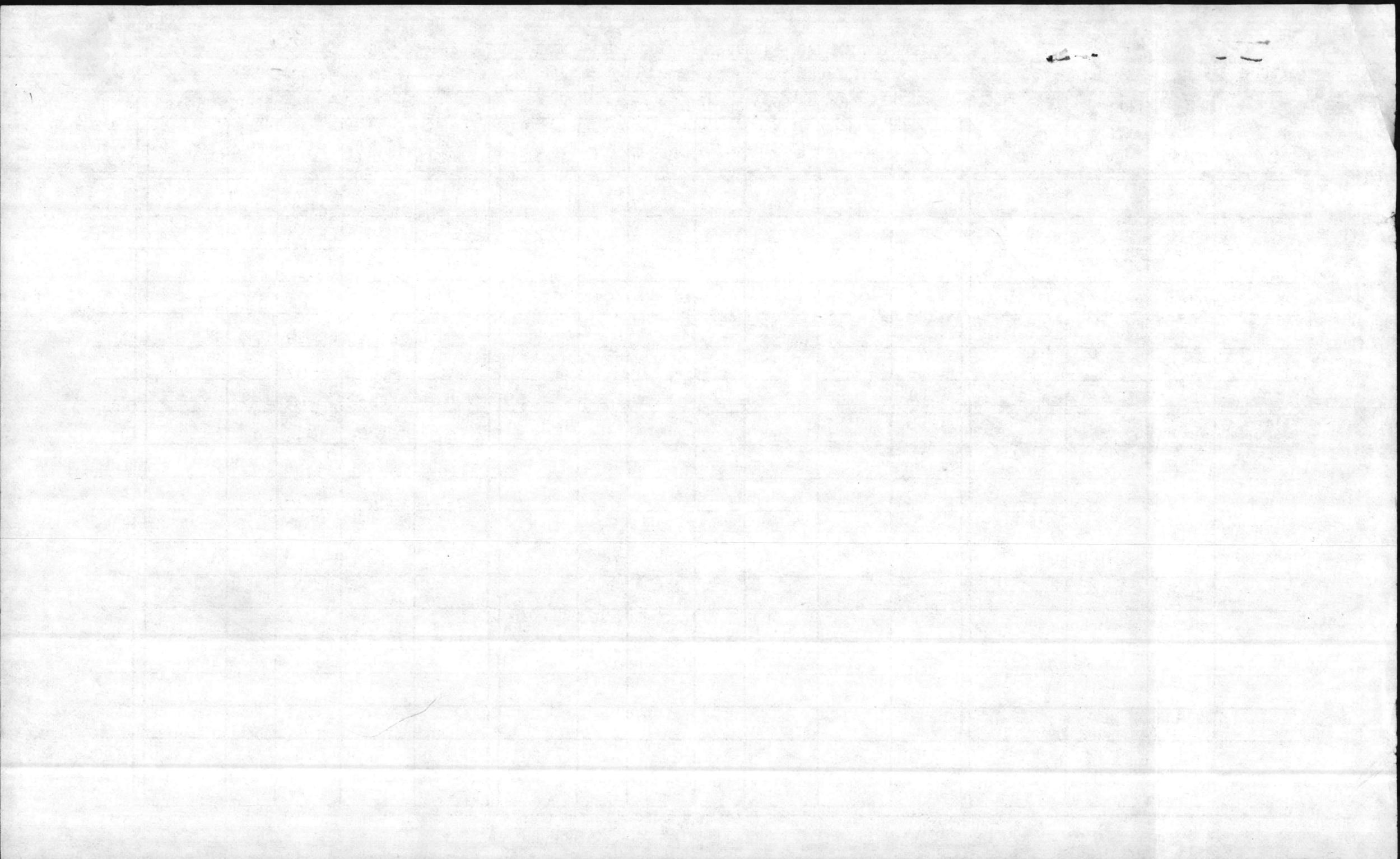














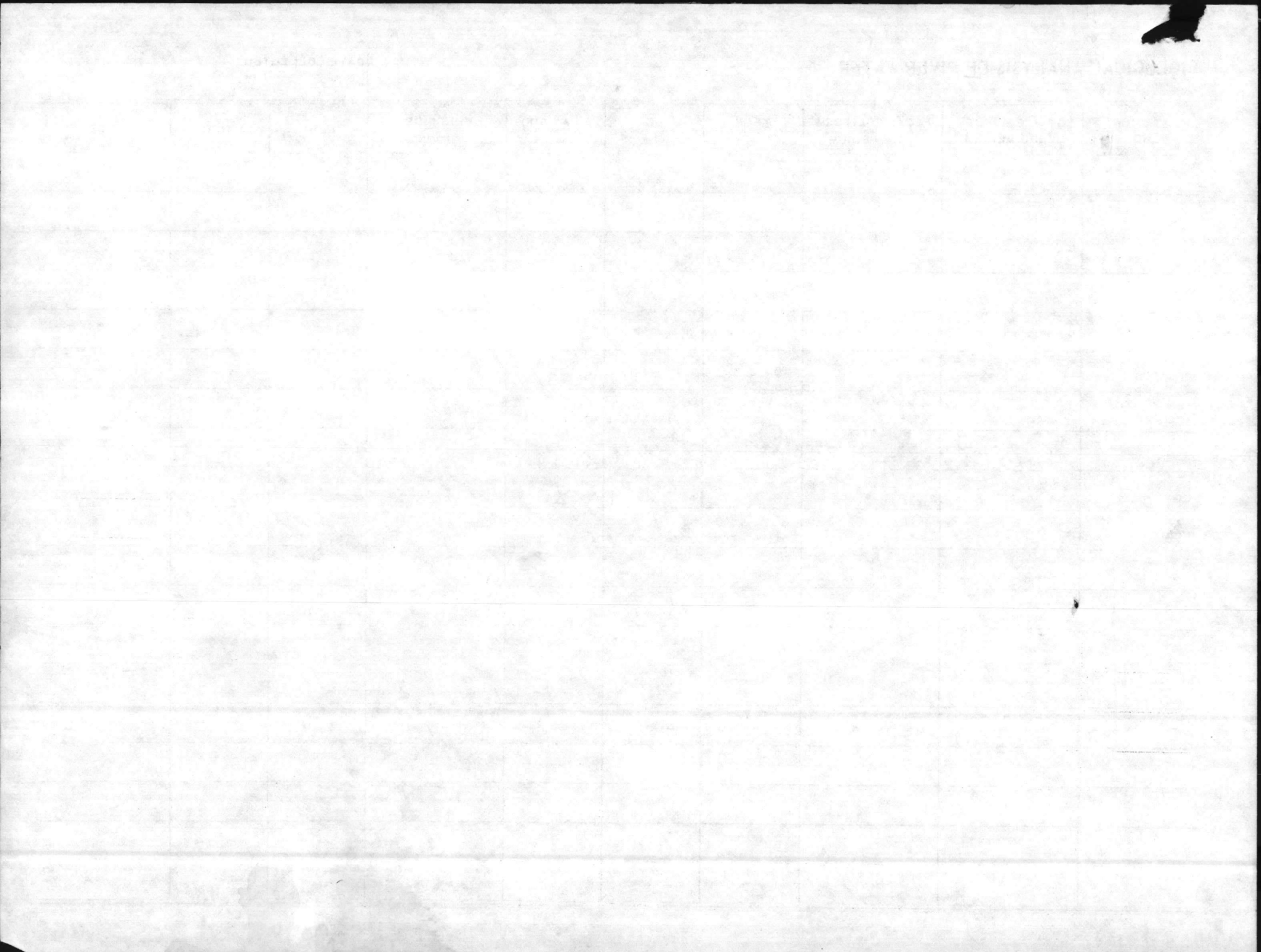
# BIOLOGICAL ANALYSIS OF RIVER WATER

MCBCL 11330/6

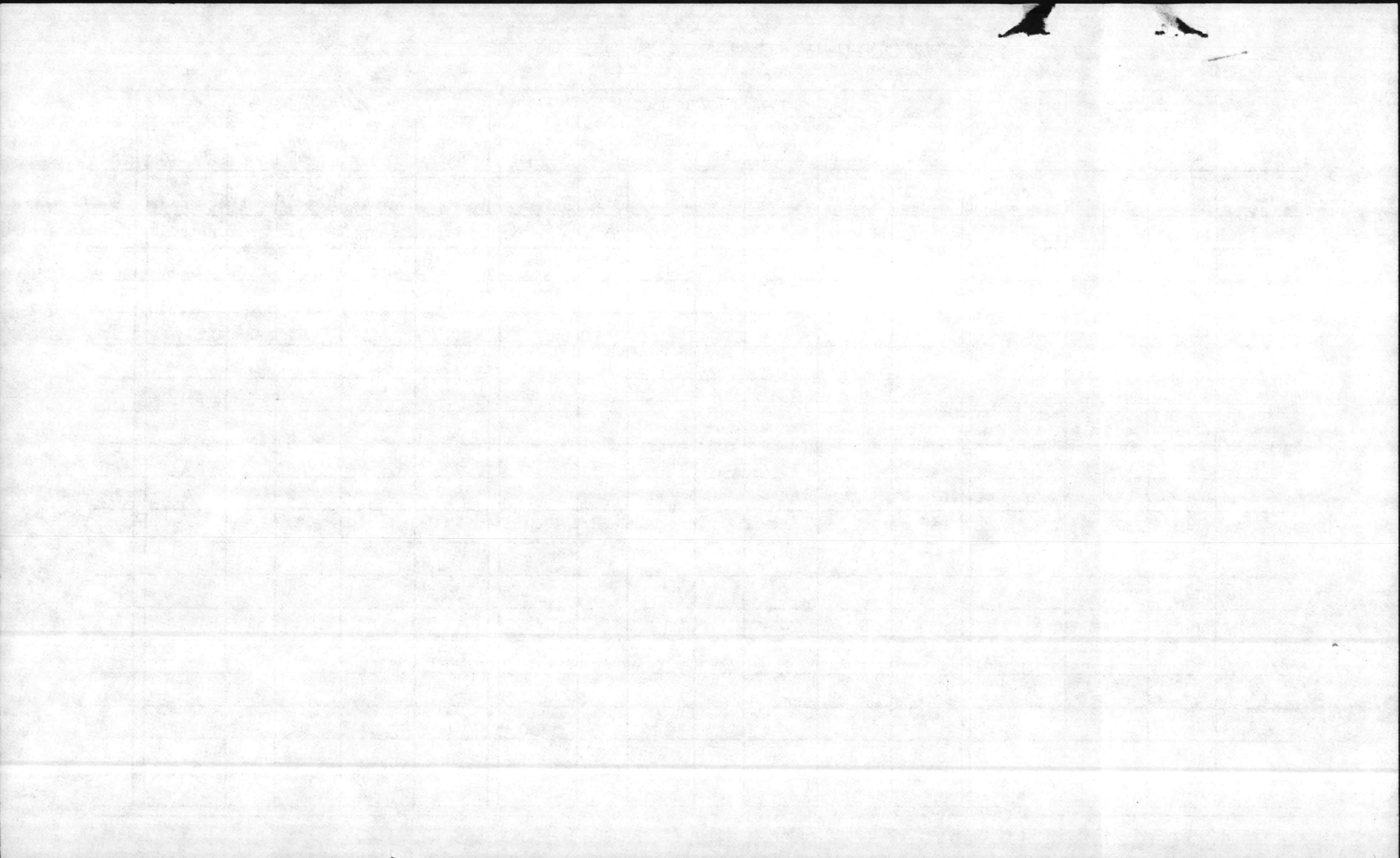
DATE COLLECTED

21 May 1979

STATION NO.	TOTAL COLIFORM MEMDO MEDIUM	FECAL COLIFORM		TEMP C	DO ppm		5 DAY BOD ppm	CHLORIDES ppm	P. H.	WIND	TIDE
		ml	F C MEDIUM COUNT								
01	1045	1	100	21	4.6	3.5	1.1		7.0		
		25	200								
02	1100	1	100	18	6.3	4.0	2.3		7.4		
		25	100								
03	1110	1	0	17	7.5	3.6	3.9		7.9		
		25	44								
04	1120	1	0	17	7.7	5.8	1.9		8.0		
		25	8								
05	1130	1	0	22	7.7	6.1	1.6		8.0		
		100	10								
06	1145	1	0	17	7.7	5.8	1.9		8.1		
		100	1								
07	1235	1	0	17	7.1	6.4	0.7		8.1		
		100	0								
08	1250	1	0	21	6.4	6.1	0.3		8.0		
		100	1								
09	1240	1	0	22	6.9	6.1	6.8		8.0		
		100	0								
	Blank		Blank	Blank	Blank	Blank	B		Blank		







BIOLOGICAL ANALYSIS OF RIVER WATER

MCBCL 11330/6

Time

215  
64  
308  
192

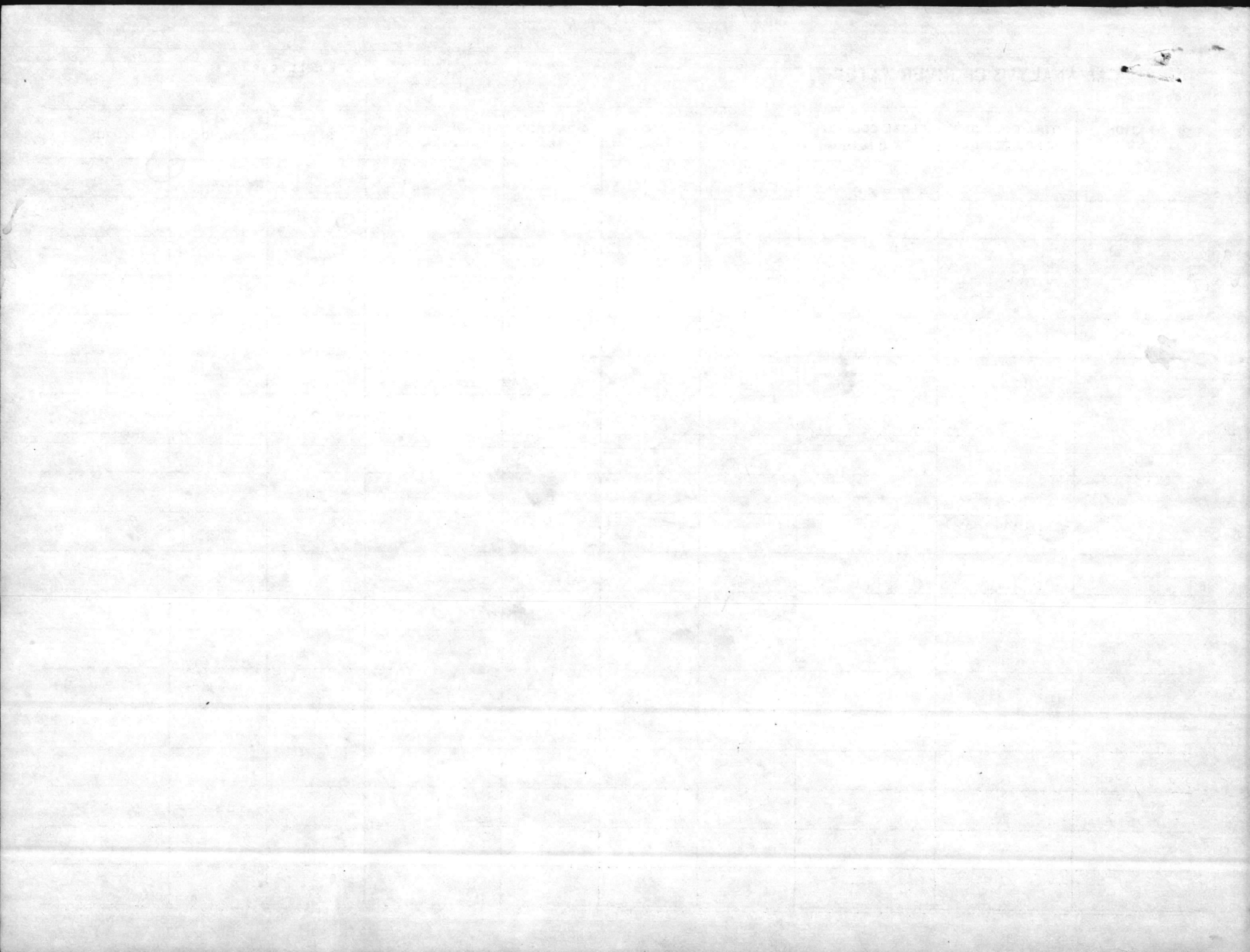
DATE COLLECTED

O+G

18 JUNE 79

STATION NO.	TOTAL COLIFORM mENDO MEDIUM	FECAL COLIFORM m F C MEDIUM	TEMP C	DO ppm	5 DAY BOD ppm	<del>CHLORIDES</del> ppm	P. H.	WIND	TIDE
Rw-01	1020	(25) TNTC (1) 4000	21	5.0	3.4	1.6	13.1	6.6	
02	1035	(25) 192 (1) 200	19	8.5	2.8	5.7	0.5	7.9	
03	1040	(25) 64 (1) 0	19	8.4	4.3	4.1	0.4	8.4	
04	1050	(100) 6	19	7.9	5.3	2.6	0.4	8.3	
05	1100	(100) 12	19	7.1	4.7	2.4	0.4	8.1	
06	1115	(100) 2	18	7.6	5.3	2.3	0.6	8.2	
07	1150	(100) 2	24	6.8	5.0	1.8	0.3	8.2	
08	1210	(100) 0	19	7.1	5.1	2.0	0.1	8.2	
09	1200	(100) 2	19	7.0	5.8	1.2	0.6	8.2	
		Pos count +					0.5		
		Neg count -							

*Shale*



NEW RIVER

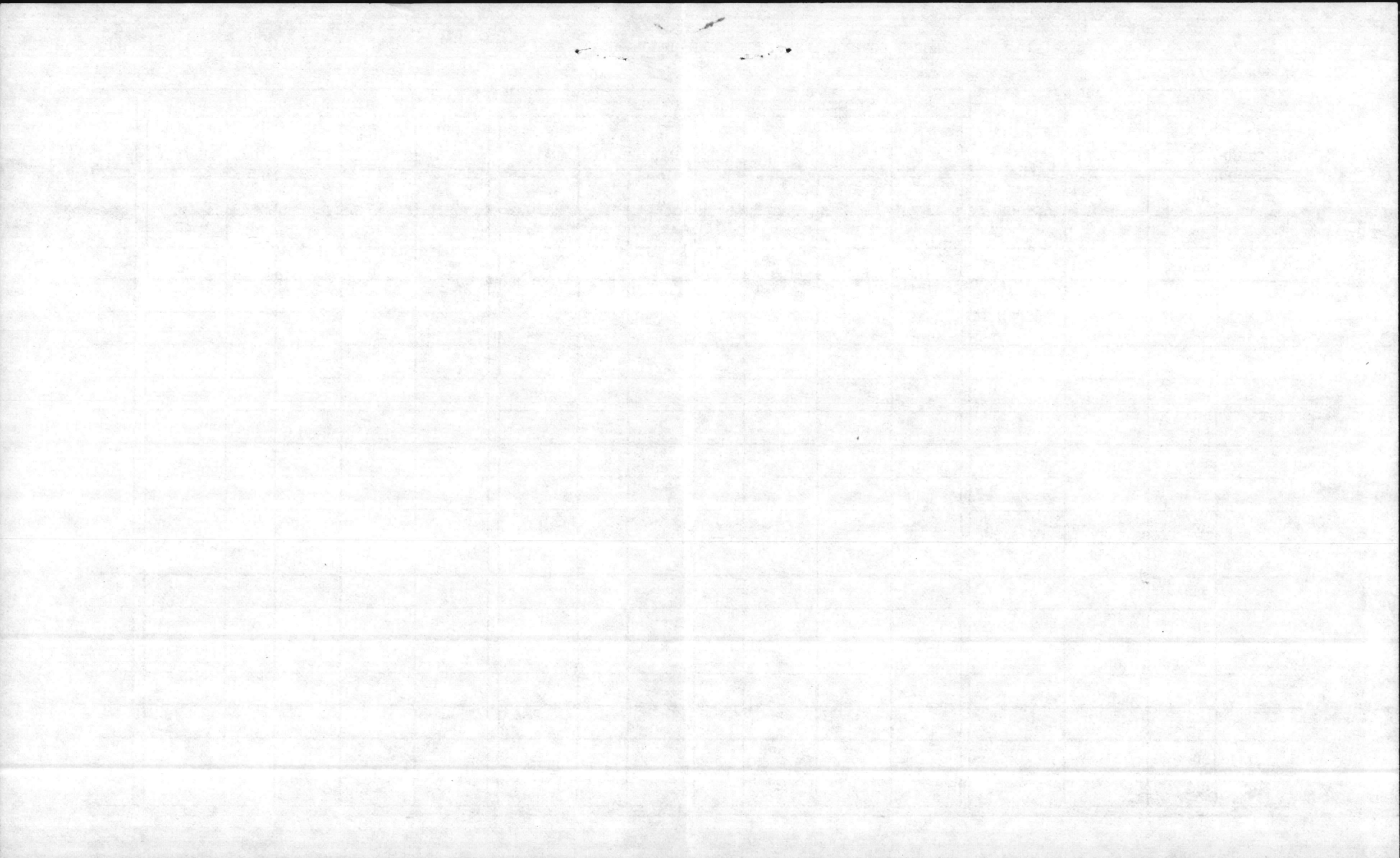
QUALITY CONTROL LAB - STORM SEWER DISCHARGES - WORK SHEET

Recorded

MCBCL 11345/7

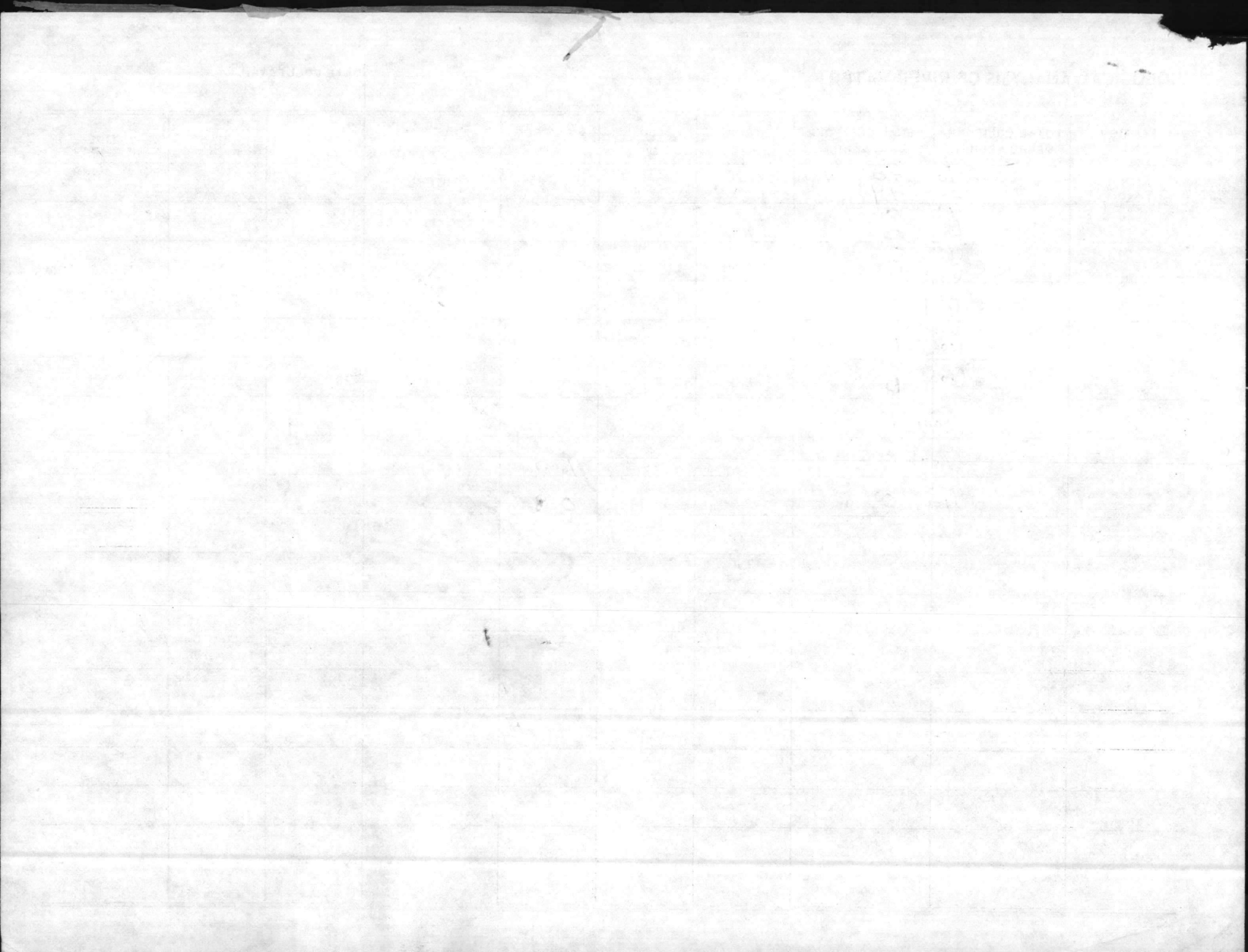
DATE COLLECTED	STORM SEWER NUMBER	FLOW RATE GALLONS PER DAY	SAMPLE COLLECTOR	TOTAL SUSPENDED SOLIDS (TSS)							OIL AND GREASE					pH	
				DISH NUMBER	ml SAMPLE	DISH & SOLID	DISH	WEIGHT GAIN	TSS mg/l	ANALYST	FLASK NUMBER	FLASK & OIL	FLASK	mg/l OIL	ANALYST		
	SD- 1											1	8324	73 8193	13.1	13.7	
	SD- 2											2	2165	61 2160	1.5	1.5	
	SD- 3											3	4667	61 4663			
	SD- 4											4	8229	60 8225			
	SD- 5											5	6593	60 6589			
	SD- 6											6	4852	61 4846			
	SD- 7											7	0668	61 0665			
	SD- 8											8	7236	60 7235			
	SD- 9											9	3772	61 3766			
	SD- 10											BL	4751	74 4746	0.5		
	SD-																
	SD-																
	SD-																
	SD-																
	SD-																
	SD-																
	SD-																
	SD-																
	SD-																

Lvk e







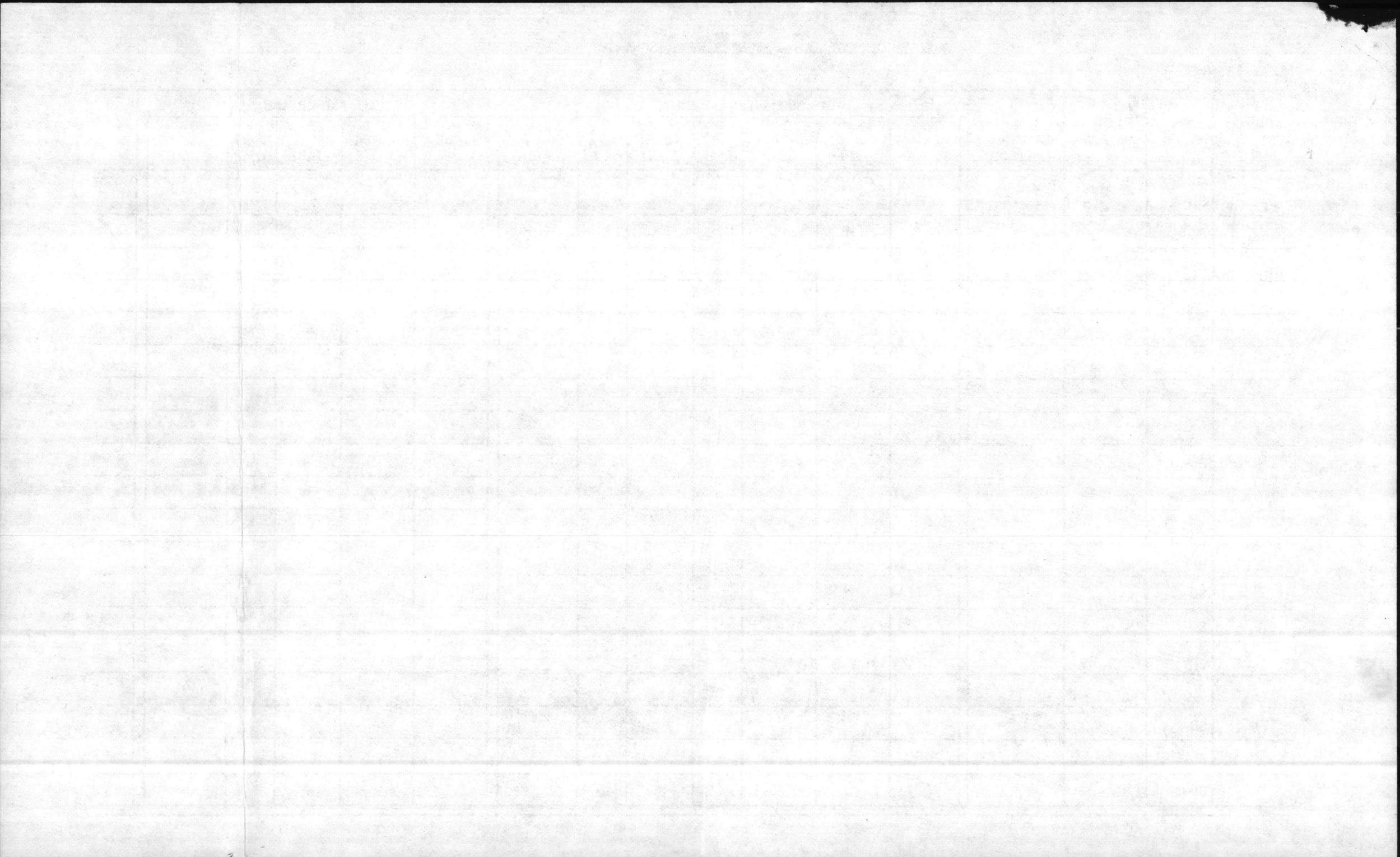


QUALITY CONTROL LAB - STORM SEWER DISCHARGES - WORK SHEET

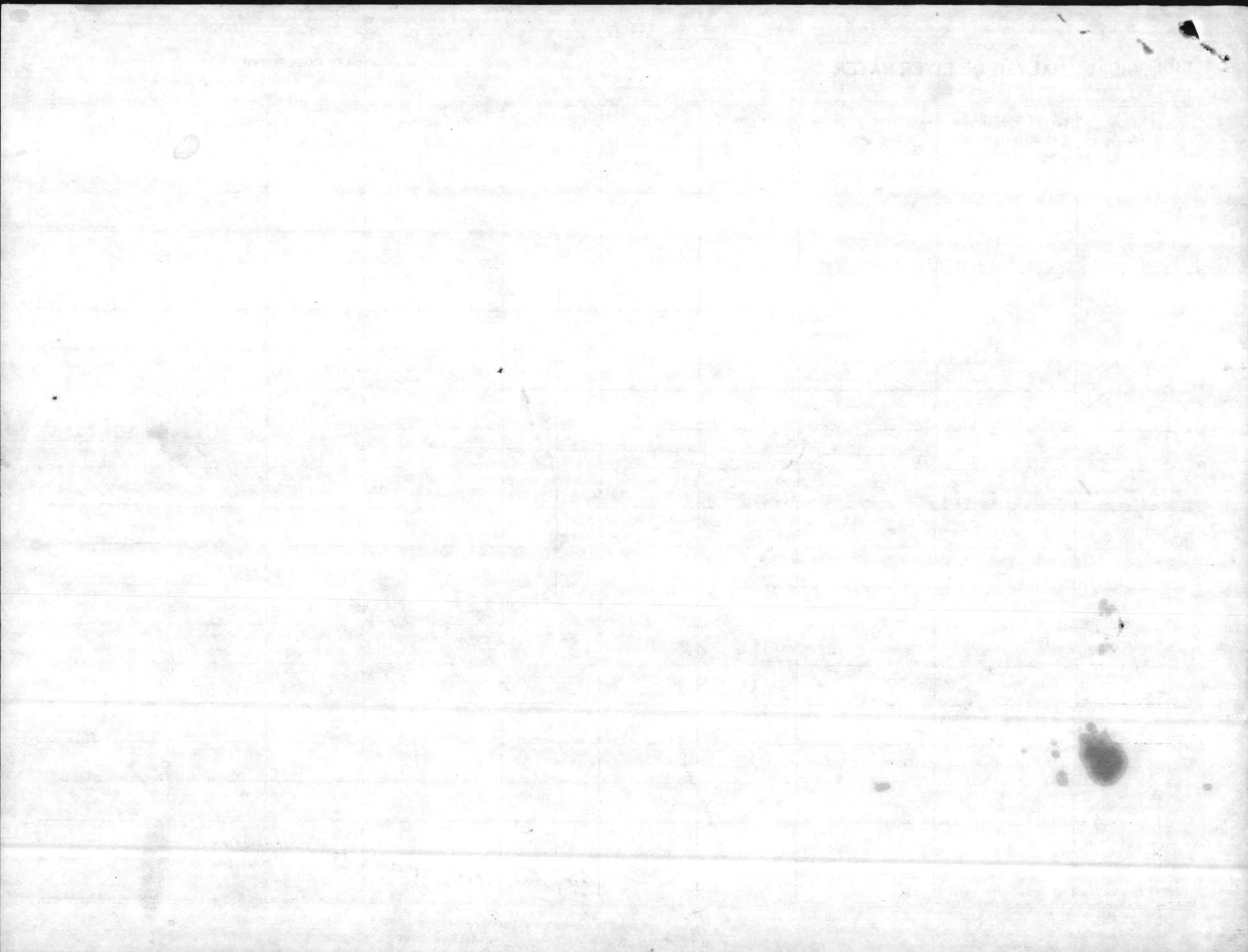
MCBCL 11345/7

DATE COLLECTED	STORM SEWER NUMBER	FLOW RATE GALLONS PER DAY	SAMPLE COLLECTOR	TOTAL SUSPENDED SOLIDS (TSS)							OIL AND GREASE					pH		
				DISH NUMBER	ml SAMPLE	DISH & SOLID	DISH	WEIGHT GAIN	TSS mg/l	ANALYST	FLASK NUMBER	FLASK & OIL	FLASK	mg/l OIL	ANALYST			
7/16/79	SD- 1		CLARK + LUKE									1	<sup>73</sup> 8173	8192	1.9	1.1	8.5	
	SD- 2											2	<sup>61</sup> 2145	2160	1.5	0.7	8.2	
	SD- 3											3	<sup>61</sup> 4652	4664	1.2	0.4	8.3	
	SD- 4											4	<sup>60</sup> 8220	8226	0.6	0.0	8.4	
	SD- 5											5	<sup>60</sup> 6583	6591	0.8	0.0	8.4	
	SD- 6											6	<sup>61</sup> 4837	4848	1.1	0.3	8.3	
	SD- 7											7	<sup>61</sup> 0654	0664	1.0	0.2	8.1	
	SD- 8											8	<sup>60</sup> 7234	7236	0.2	0.0	8.1	
	SD- 9											9	<sup>61</sup> 3759	3770	1.1	0.3	8.1	
	SD- BL											BL	<sup>74</sup> 4738	4746	0.8	BLANK		
	SD-																LUKE	
	SD-																	
	SD-																	
	SD-																	
	SD-																	
	SD-																	
	SD-																	
	SD-																	
	SD-																	

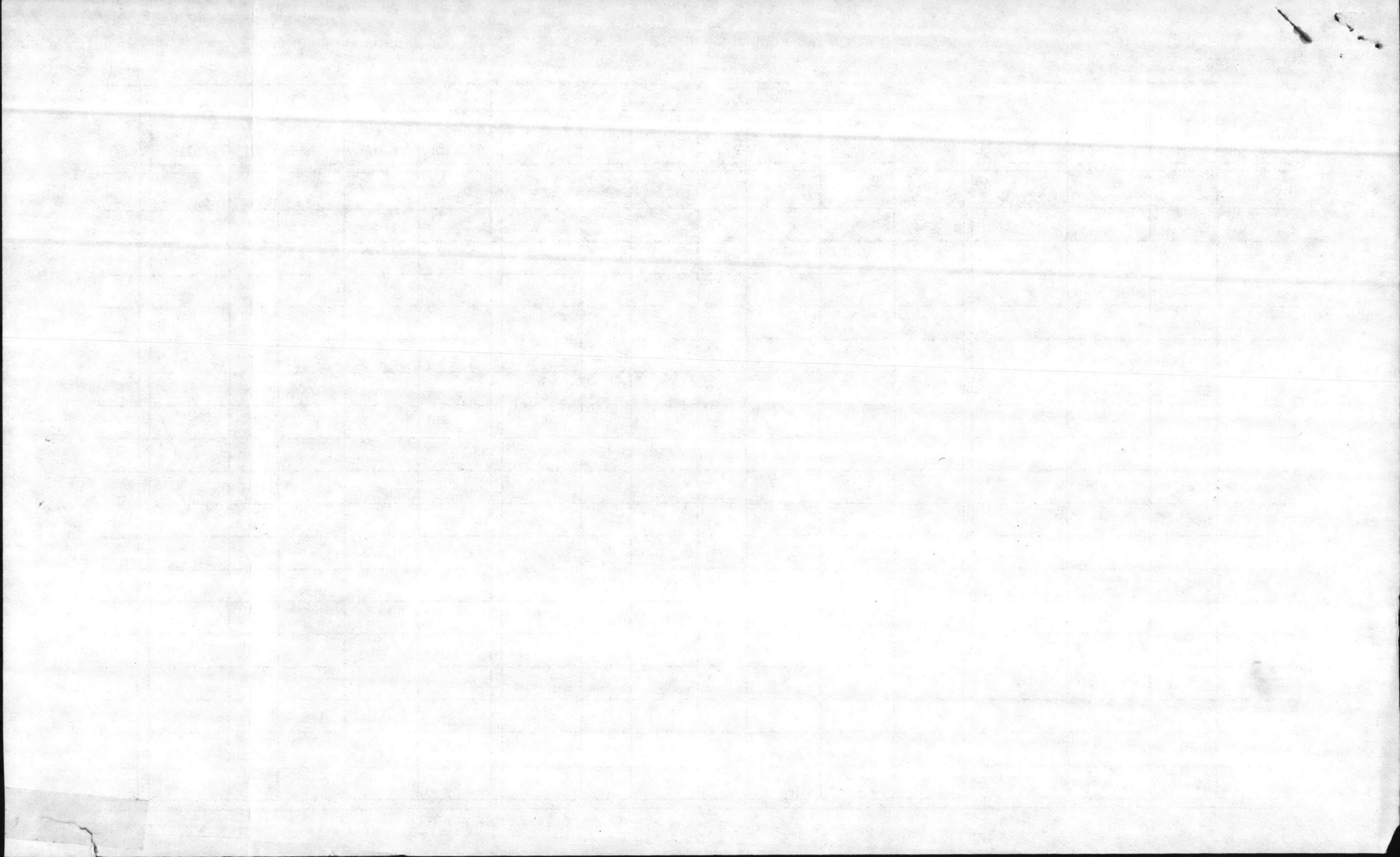
NEW RIVER





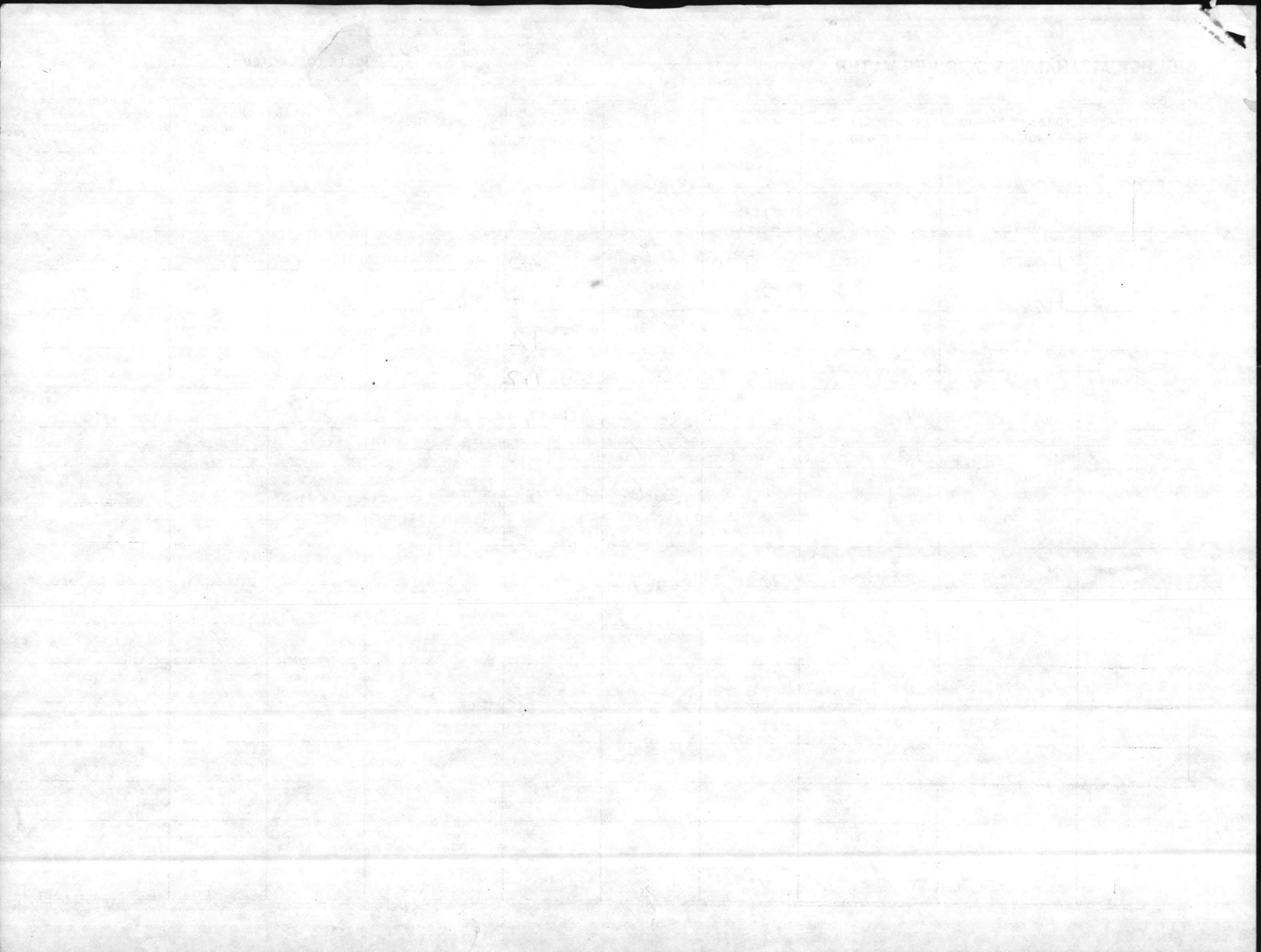




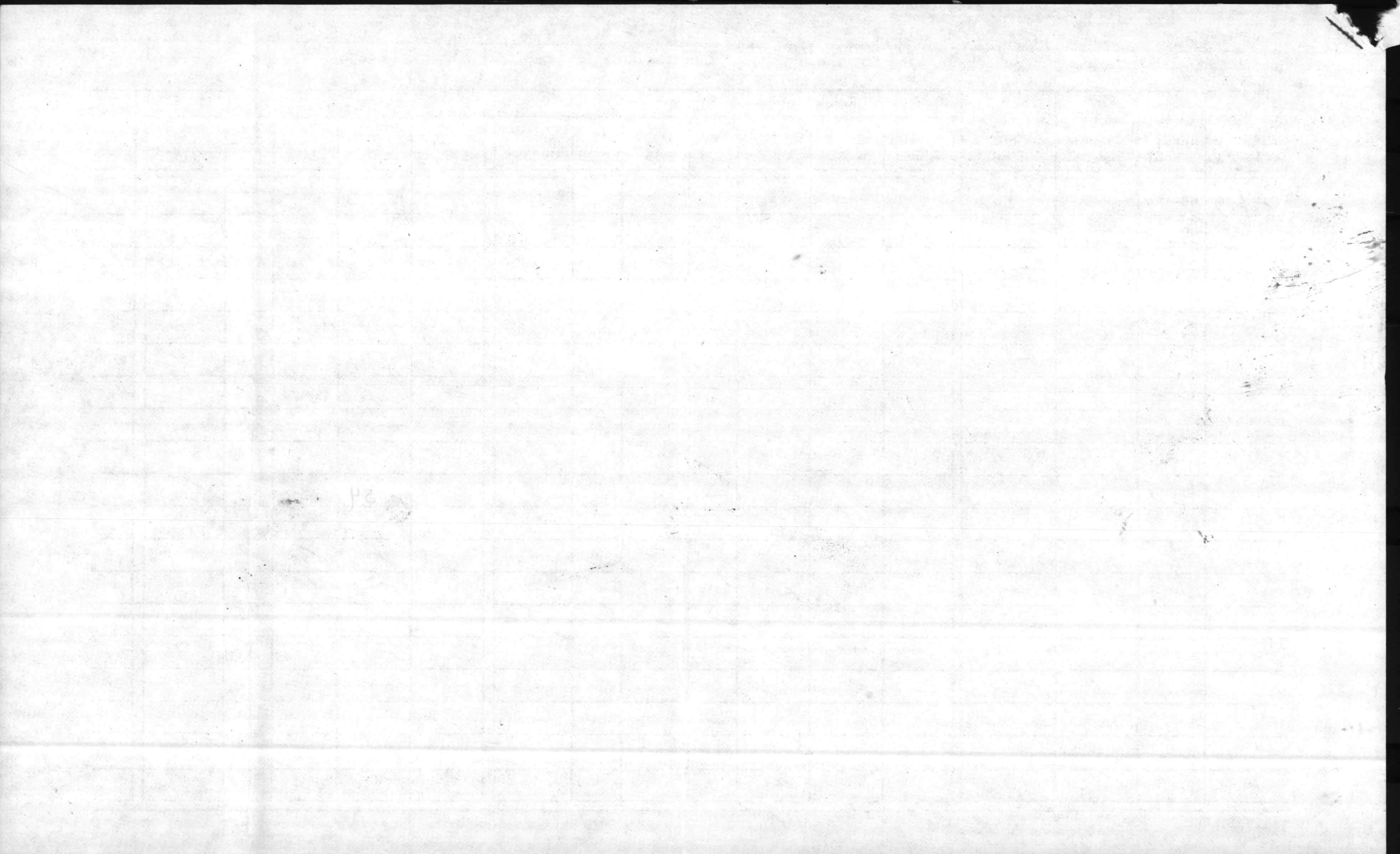












# BIOLOGICAL ANALYSIS OF RIVER WATER

MCBCL 11330/6

*Time*

DATE COLLECTED

26 OCT 79

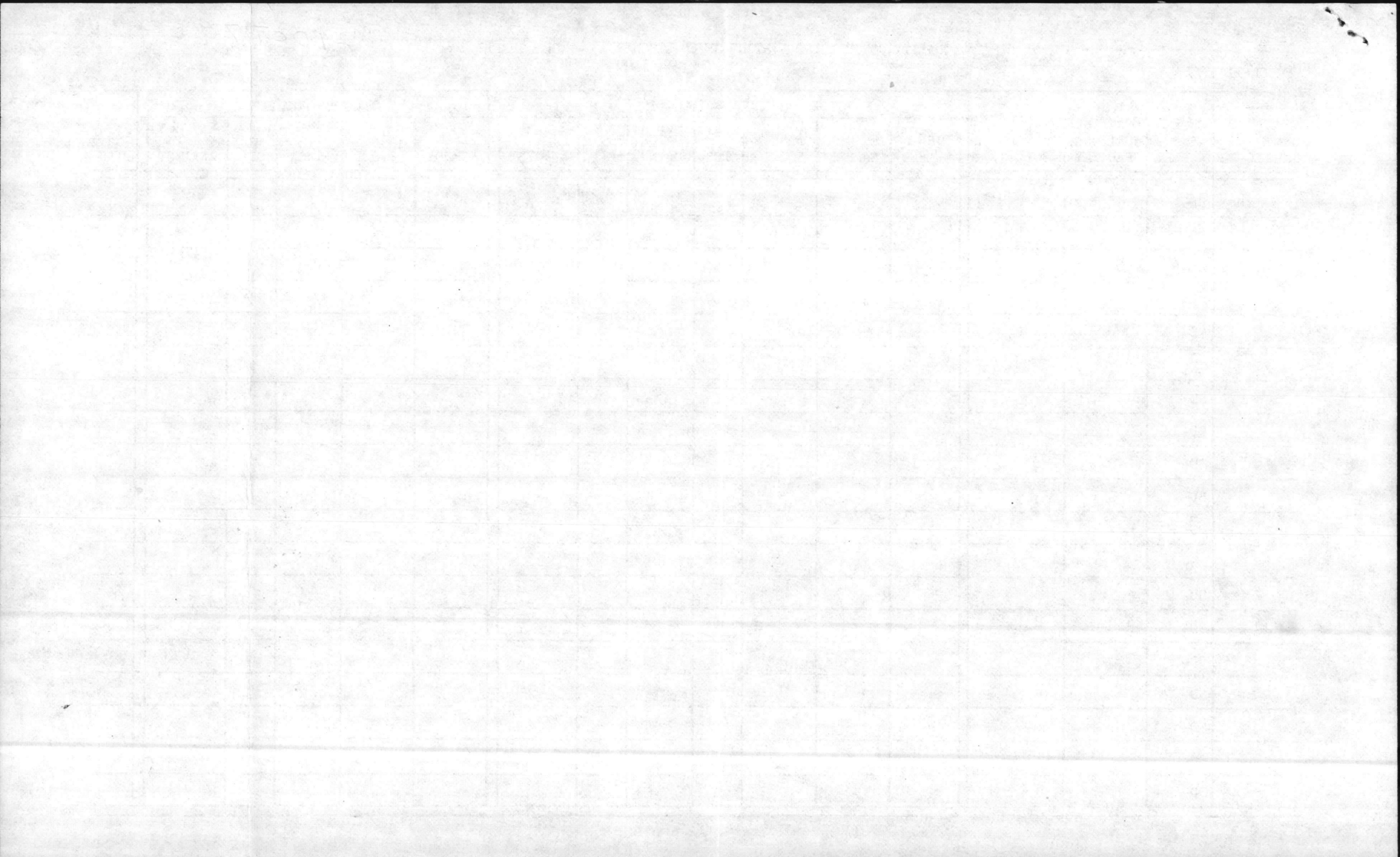
STATION NO.	TOTAL COLIFORM		FECAL COLIFORM m F C MEDIUM	TEMP C	DO ppm	5 DAY BOD		CHLORIDES	P. H.	WIND	TIDE
	m	ENDO MEDIUM				ppm	ppm				
RW-01	1800	25 <sup>(1)</sup>	40	17°	10.8	4.6	6.2	0.56	8.5		
02	1015	25 <sup>(1)</sup>	12	19°	6.7	4.8	1.9	1.7	7.4		
03	1020	25 <sup>(1)</sup>	0	19°	7.6	5.2	2.4	2.0	7.9		
04	1035	25 <sup>(1)</sup>	0	18°	8.4	5.8	2.6	1.1	8.0		
05	1045	25 <sup>(100)</sup>	0	18°	8.2	6.3	1.9	1.0	8.0		
06	1105	25 <sup>(100)</sup>	0	18°	8.2	6.4	1.8	0.1	8.1		
07	1145	25 <sup>(100)</sup>	0	19°	7.7	7.1	0.6	1.0	8.1		
08	1200	25 <sup>(100)</sup>	3	19°	7.3	7.2	0.1	1.1	8.1		
09	1150	25 <sup>(100)</sup>	1	19°	7.6	7.2	0.4	0.3	8.2		

*Tube*

*B*

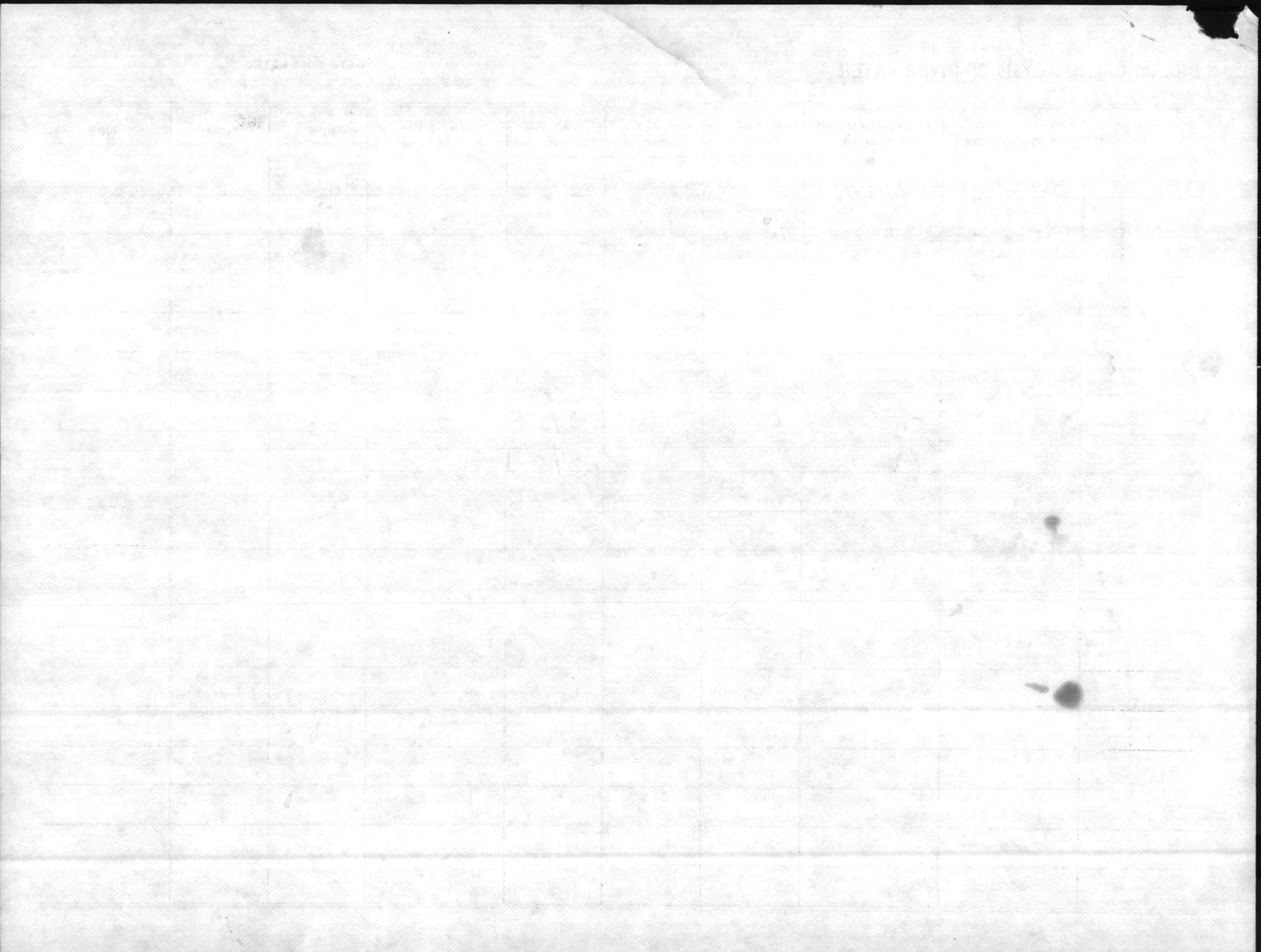




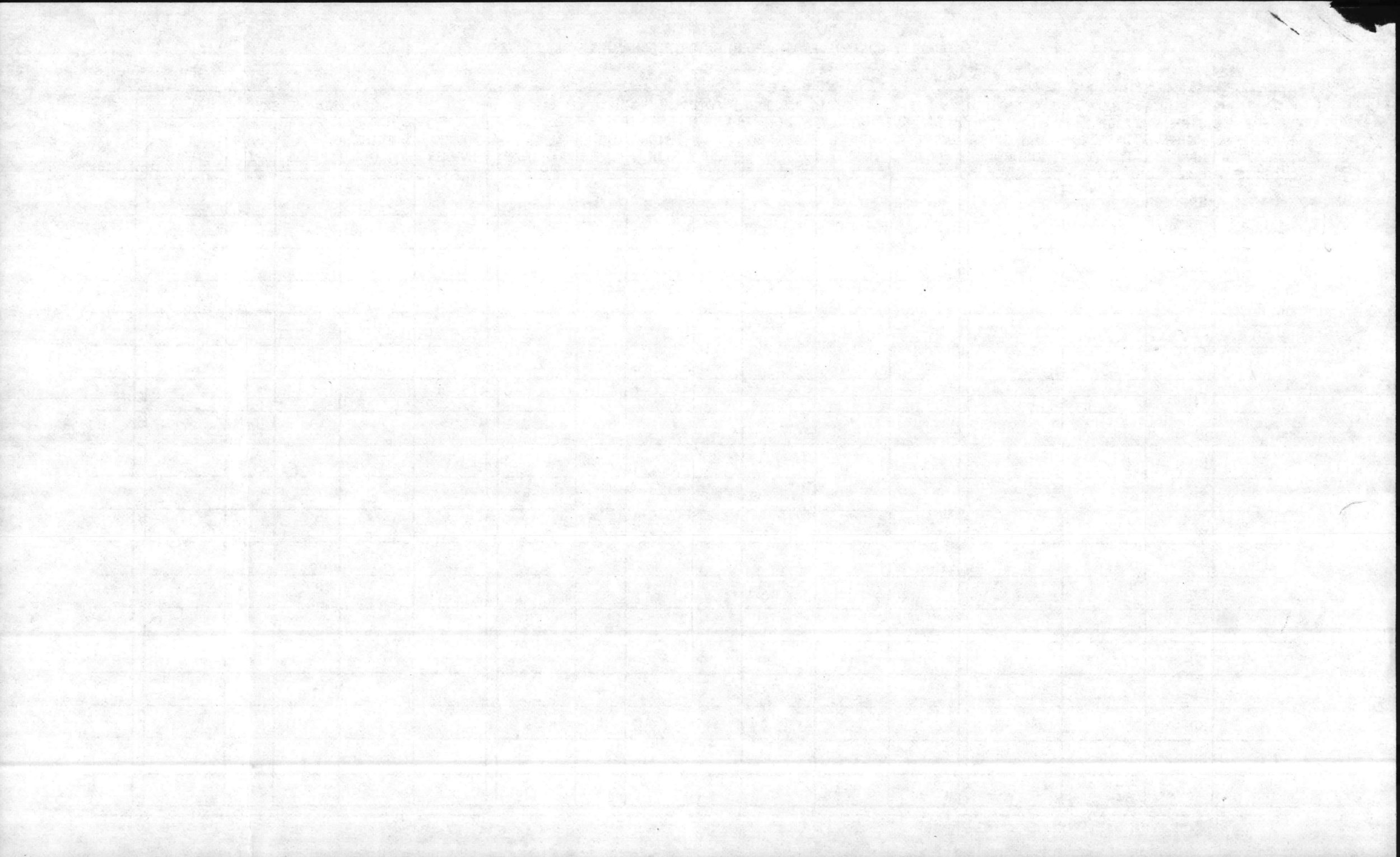














1912

U.S. GEOLOGICAL SURVEY



No.	Name	Age	Sex	Color	Hair	Eyes
1						
2						
3						
4						
5						
6						
7						
8						
9						
10						
11						
12						
13						
14						
15						
16						
17						
18						
19						
20						
21						
22						
23						
24						
25						
26						
27						
28						
29						
30						
31						
32						
33						
34						
35						
36						
37						
38						
39						
40						
41						
42						
43						
44						
45						
46						
47						
48						
49						
50						
51						
52						
53						
54						
55						
56						
57						
58						
59						
60						
61						
62						
63						
64						
65						
66						
67						
68						
69						
70						
71						
72						
73						
74						
75						
76						
77						
78						
79						
80						
81						
82						
83						
84						
85						
86						
87						
88						
89						
90						
91						
92						
93						
94						
95						
96						
97						
98						
99						
100						



