

Recorded 13 Jun 1984

OB

BIOLOGICAL ANALYSIS OF RIVER WATER

MCBCL 11330/6

DATE COLLECTED

5/10/84

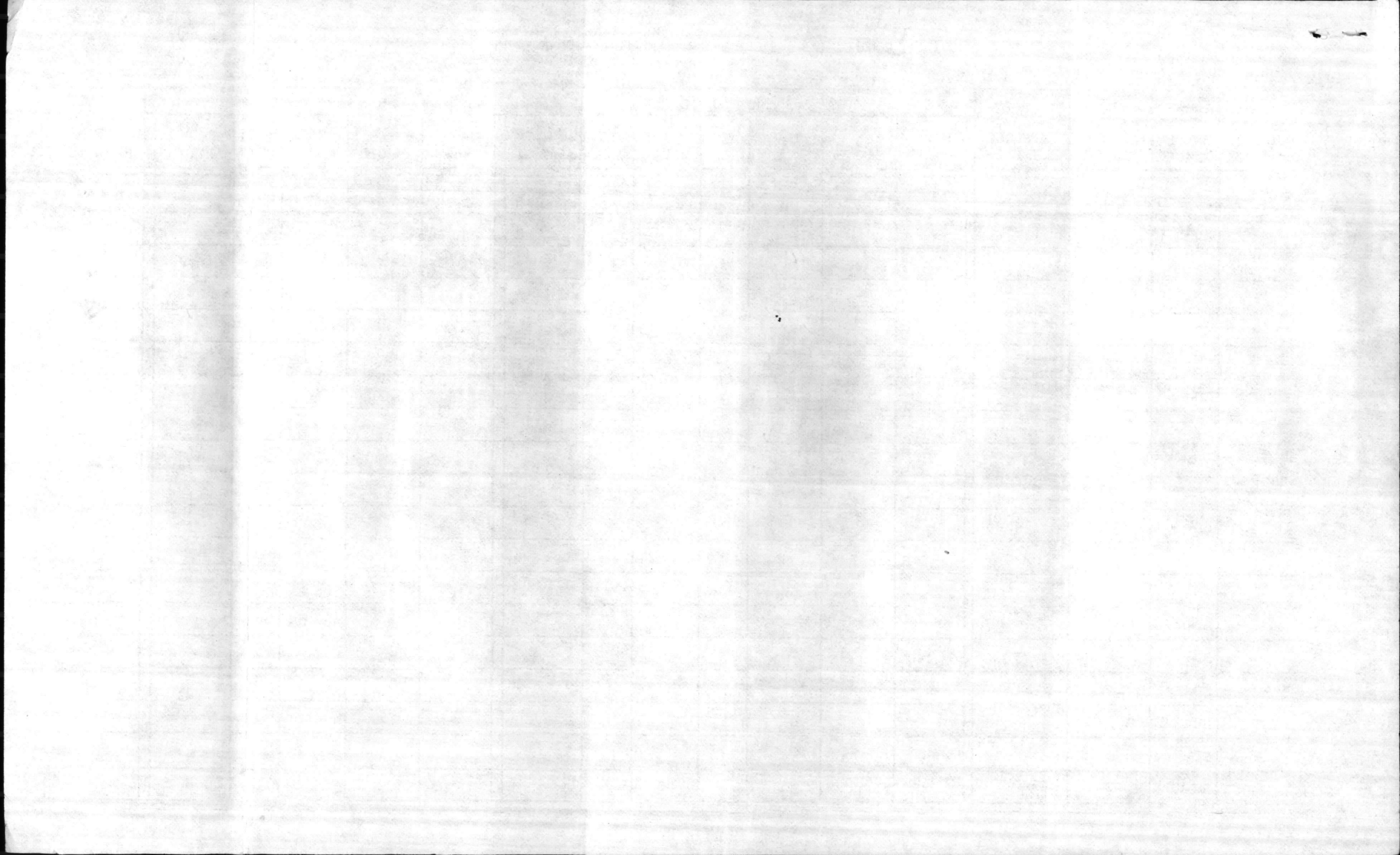
STATION NO.	TOTAL COLIFORM mENDO MEDIUM	FECAL COLIFORM m F C MEDIUM	TEMP C	DO ppm	5 DAY BOD ppm	CHLORIDES ppm	P. H.	WIND	TIDE
RW-01	0.1 1000 1.0 2400 10 06	0.1 0 1.0 240 25 06	22°	5.6	4.0 / 1.6		7.0		0935
02	1.0 0 10 280	1.0 0 25 16	22°	7.3	5.6 / 1.7		7.4		0955
03	1 1400 10 06	1 0 25 80	23°	7.3	5.1 / 2.2		7.5		1010
04	25 12	25 0	22°	7.1	5.0 / 2.1		7.7		1020
05	25 16	25 0	22°	7.8	5.0 / 2.4		7.9		1035
06	25 4	25 0	22°	6.6	5.3 / 1.3		7.9		1050
07	25 0	25 0	21°	7.2	5.7 / 1.5		8.1		1110
08	25 06	25 8	22°	6.7	5.2 / 1.5		8.0		1135
09	25 06	25 4	21°	6.8	5.5 / 1.3		8.1		1120
HP	1 0 10 20	1 0 25 4			—				1030
TI	1 1200 10 06	1 100 25 84			—				1002
CG	0.1 2000 2.5 88	0.1 1000 2.5 84			—				0940
CS	1 100 10 0	1 0 25 12			—				1012
RR	25 0	25 0			—				1045
CNB	25 0	25 0			—				1103
OB	25 4	25 4			—				1132
WB	1 3000 10 88 10 06	1 100 2.5 44			—				0945
	+ -	+ -							

QUALITY CONTROL LAB - STORM SEWER DISCHARGES - WORK SHEET

MCBCL 11345/7

DATE COLLECTED	RW STORM SEWER NUMBER	FLOW RATE GALLONS PER DAY	SAMPLE COLLECTOR	TOTAL SUSPENDED SOLIDS (TSS)							OIL AND GREASE					pH	
				DISH NUMBER	ml SAMPLE	DISH & SOLID	DISH	WEIGHT GAIN	TSS mg/l	ANALYST	FLASK NUMBER	FLASK & OIL	FLASK	mg/l OIL	ANALYST		
5/10/84	SD-BLANK		H:15									2-5	⁷⁸ 3786	⁷⁸ 3777	0.9		
	SD-1											2-4	⁷⁸ 3225	⁷⁸ 3197	1.9		
	SD-2											2-9	⁷⁸ 0971	⁷⁸ 0951	1.1		
	SD-3											2-7	⁷⁸ 8077	⁷⁸ 8055	1.3		
	SD-4											2-8	⁷⁸ 4501	⁷⁸ 4490	0.3		
	SD-5											2-2	⁷⁸ 1357	⁷⁸ 1337	1.1		
	SD-6											2-10	⁷⁸ 9663	⁷⁸ 9650	0.4		
	SD-7											79-2	⁷⁹ 1380	⁷⁹ 1379	0.0		
	SD-8												⁷⁸ 6914	⁷⁸ 6894	1.1		
	SD-9											79-1	⁷⁹ 1205	⁷⁹ 1197	0.0		
	SD-																
	SD-																
	SD-																
	SD-																
	SD-																
	SD-																
	SD-																
	SD-																
	SD-																

Results reflect blank correction



BIOLOGICAL ANALYSIS OF RIVER WATER

Recorded 13 JUN 1984

DATE COLLECTED

5/21/84

MCBCL 11330/6

EQB

STATION NO.	TOTAL COLIFORM mENDO MEDIUM	FECAL COLIFORM m F C MEDIUM	TEMP C	DO ppm	5 DAY BOD ppm	CHLORIDES ppm	P. H.	WIND	TIDE
RW-1	10 1.0 0.1	25 80 70 0.1	24	9.0	5.4	3.6	8.2	SE 5-15	0857
CG		25 76 70 0.1				1.0			0900
Wilson Bay		10 747C 1.0 3600 0.1 31000							0903
Bryant Main		10 0 0.1 0							0915
RW-2		25 4 10 0 0.1 0	24	7.2	3.2	4.0	7.9		0920
TT		25 2,554 ? 0.1 0				TRACE	7.9		0925
RW-3		25 4 10 0 0.1 0	25	6.3	3.5	2.8	7.6		0930
CS		25 4 10 0							0940
RW-4		25 0 1.0 0	24	7.5	5.5	2.0	8.1		1000
HP		25 36 1.0 0				TRACE			1005
RW-5		25 0 1.0 0	24	6.5	4.8	1.7	7.9		1010
RR		25 0 1.0 0				0.6			1043
RW-6		25 0 1.0 0	23.5	7.2	2.9	4.3	8.1		1050
CNB		25 0 1.0 0				TRACE			1055
RW-7		25 0 1.0 0	23	6.9	6.0	0.9	8.1		1100
RW-8		25 0 1.0 0	23	6.6	6.0	0.6	8.2		1110
OB		25 4 1.0 0				Too shallow			1105
RW-9		25 0 1.0 0	23	6.8	6.1	0.7	7.9		1120

I-1000

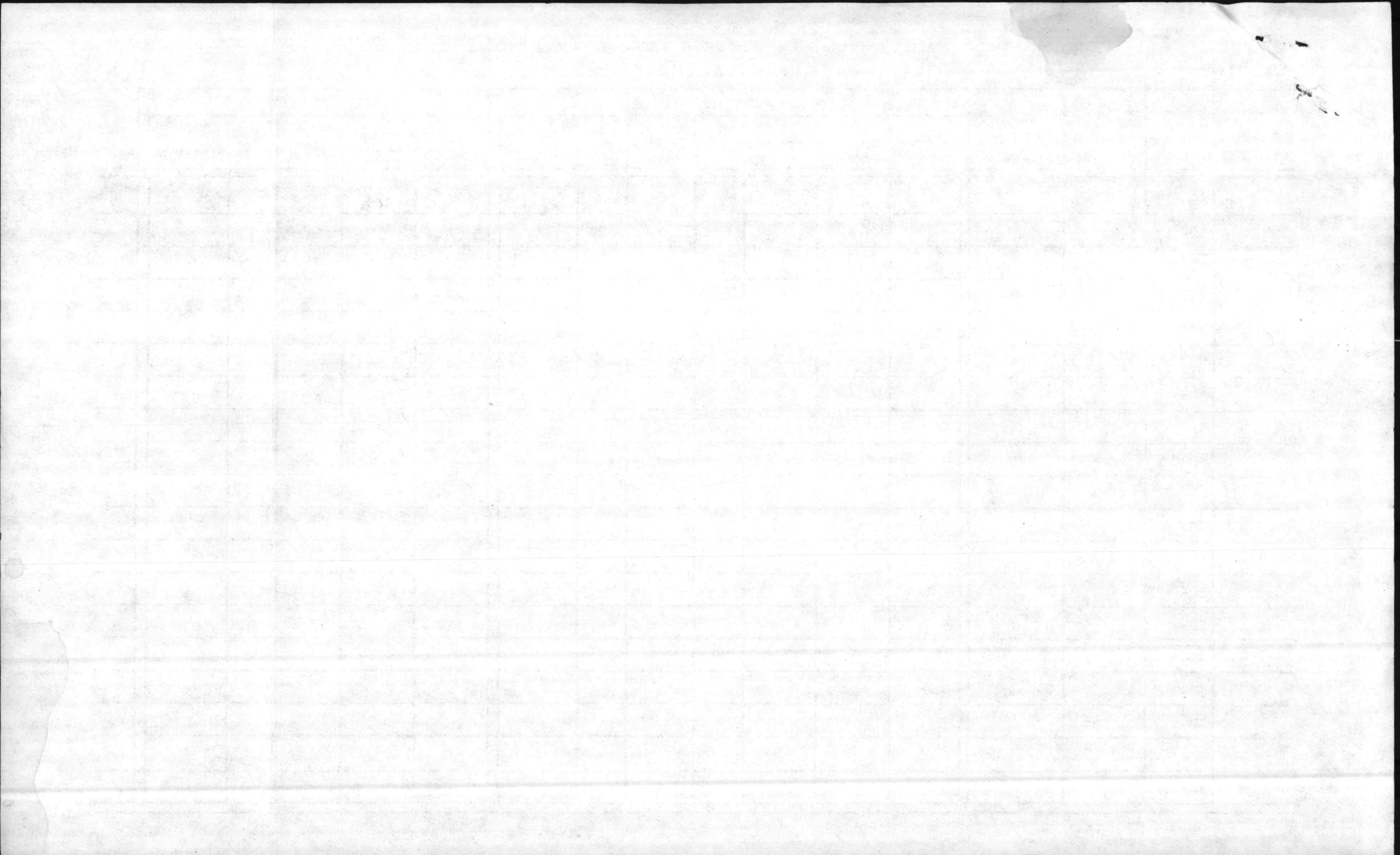
VAD

QUALITY CONTROL LAB - STORM SEWER DISCHARGES - WORK SHEET

MCBCL 11345/7

DATE COLLECTED	STORM SEWER NUMBER	FLOW RATE GALLONS PER DAY	SAMPLE COLLECTOR	TOTAL SUSPENDED SOLIDS (TSS)							OIL AND GREASE					pH	
				DISH NUMBER	ml SAMPLE	DISH & SOLID	DISH	WEIGHT GAIN	TSS mg/l	ANALYST	FLASK NUMBER	FLASK & OIL	FLASK	mg/l OIL	ANALYST		
5/20/04	SD- Blank		H.C.L.								Blank	79-2	⁷⁹ 1366	⁷⁹ 1353	1.3	H	
	SD- 1												⁷⁸ 6903	⁷⁸ 6874	1.6		
	SD- 2											2-5	⁷⁸ 3797	⁷⁸ 3774	1.0		
	SD- 3											2-3	⁷⁸ 5014	⁷⁸ 4985	1.6		
	SD- 4											2-1	⁷⁸ 7027	⁷⁸ 1005	0.9		
	SD- 5											2-10	⁷⁸ 5648	⁷⁸ 5627	0.8		
	SD- 6											2-2	⁷⁸ 1348	⁷⁸ 1332	0.3		
	SD- 7											2-8	⁷⁸ 4500	⁷⁸ 4483	0.4		
	SD- 8											19-1	⁷⁹ 1185	⁷⁹ 1184	0.0		
	SD- 9											2-7	⁷⁸ 8053	⁷⁸ 8053	0.0		
	SD-																
	SD-																
	SD-																
	SD-																
	SD-																
	SD-																
	SD-																
	SD-																
	SD-																
	SD-																

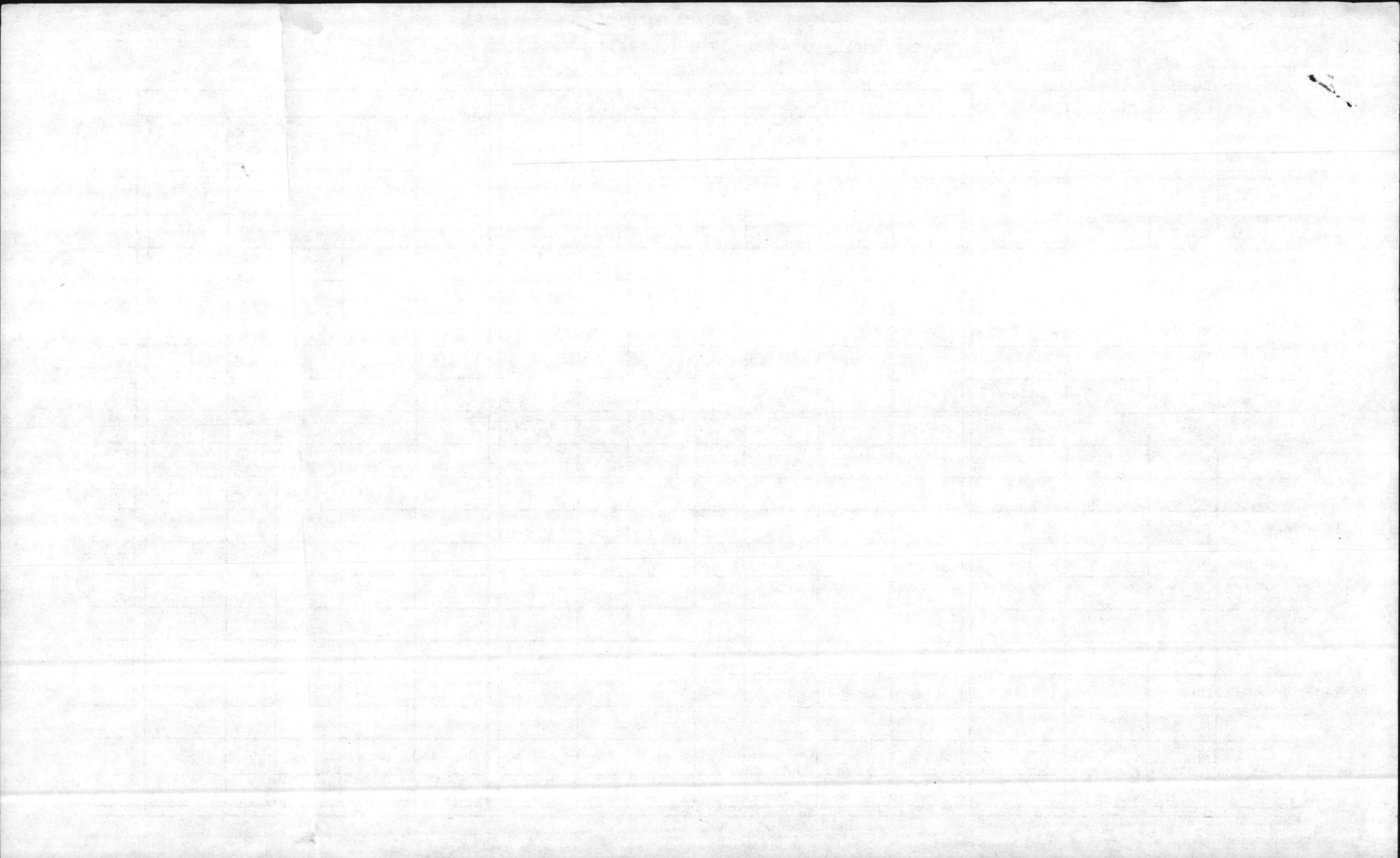
Results reflect blank correction.



DATE RECEIVED

STATE OF TEXAS

COUNTY OF ...



BIOLOGICAL ANALYSIS OF RIVER WATER

MCBCL 11330/6

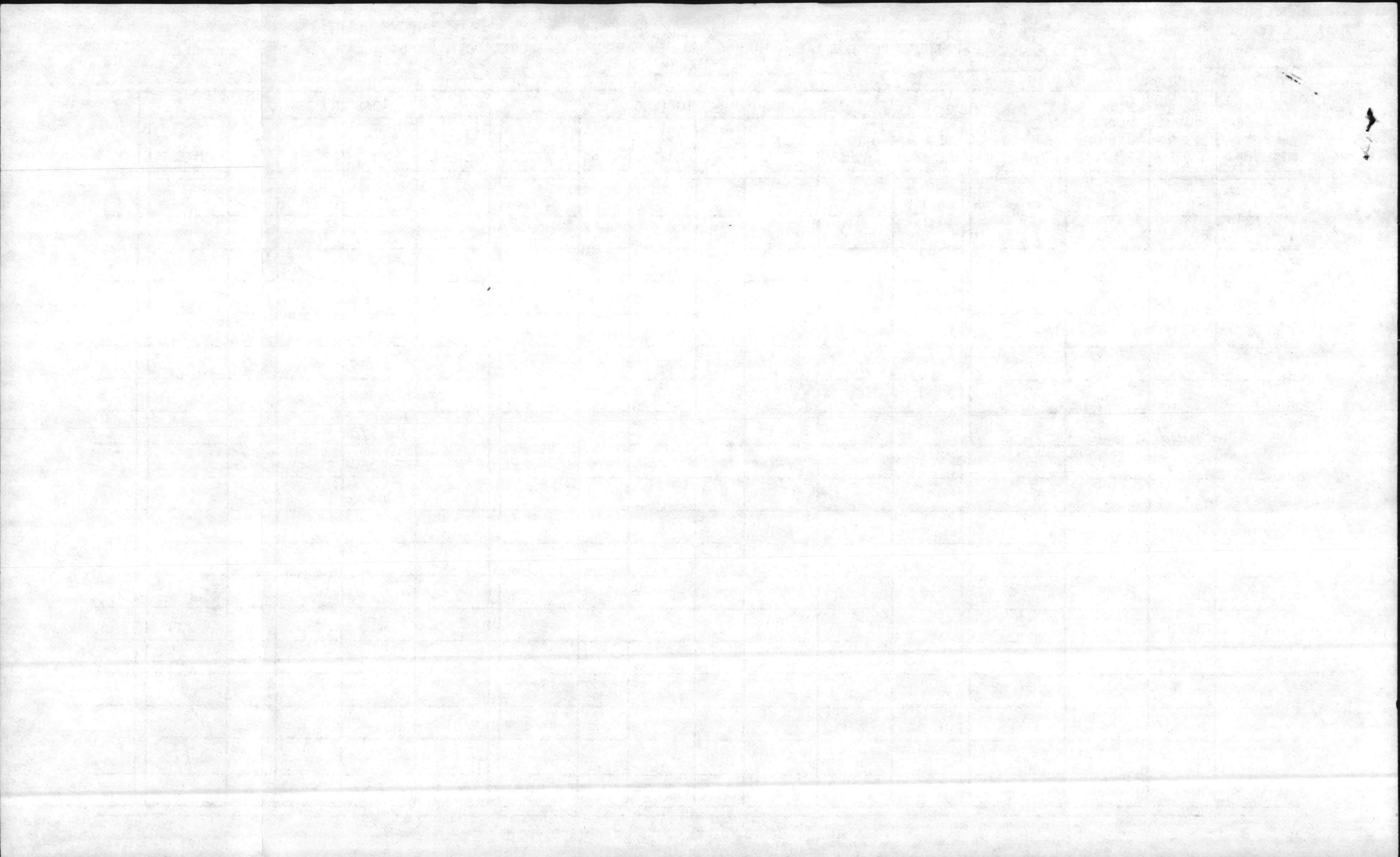
Rec'd 9/5/84

EOBekt

DATE COLLECTED

26 JULY 84

STATION NO.	TOTAL COLIFORM m ENDO MEDIUM	FECAL COLIFORM m F C MEDIUM	TEMP °C	DO ppm	5 DAY BOD ppm		CHLORIDES ppm	P. H.	WIND	TIME TIDE
1	5.1 13000 1.0 OG 10.0 OG	(1) 3700 (10) OG	28.0	3.7	1.4	2.3		7.3		0951
2	5.1 13000 1.0 OG 10.0 OG	(1) 4600 (10) OG	28.0	3.9	0.8	3.1		7.1		1015
3	(1) 2200 (10) OG	(1) 700 (10) OG	28.0	5.6	1.7	3.9		7.6		1021
4	(1) 0 (25) 0	(1) 0 (25) 0	28.0	6.7	2.7	4.0		8.2		1031
5	(1) 0 (25) 16	(1) 0 (25) 0	29.0	6.5	3.8	2.7		8.2		1048
6	(1) 200 (25) OG	(1) 0 (25) 32	29.0	5.2	2.8	2.4		8.1		11:03
7	(1) 0 (25) 20	(1) 0 (25) 4	28.0	5.7	3.8	1.9		8.2		1116
8	(1) 40 (25) OG	(1) 0 (25) 44	28.5	5.3	4.1	1.2		8.1		1132
9	(1) 200 (25) OG	(1) 0 (25) 48	29.0	5.0	3.4	1.6		8.1		1123
WB	5.1 13000 1.0 OG 10.0 OG	(1) 1300 (10) TNTC					Cl ₂			
HA							0.2			
TT							0.2			
CG							0.2			
OB							0.2			
CHB							0.6			
CJ							0.4			
RR							0.2			



BIOLOGICAL ANALYSIS OF RIVER WATER

MCBCL 11330/6

Rechecked

9/5/84

[Signature]

DATE COLLECTED

8-16-84

9

STATION NO.	TOTAL COLIFORM mENDO MEDIUM	FECAL COLIFORM m F C MEDIUM	TEMP °C	DO ppm	5 DAY BOD ppm		CHLORIDES ppm	P. H.	WIND	TIDE
RW-01	1200	70	28°	3.1	2.1	1.0		6.8		0955
RW-02	400	10	31°	5.4	1.7	3.7		7.3		1012
RW-03	100	60	30.5	5.5	2.8	2.7		7.8		1018
RW-04	600	52	30.5	6.7	3.4	3.3		8.2		1028
RW-05	100	8	30.5	6.9	3.4	2.6		8.3		1045
RW-06	200	4	30.5	7.0	3.4	3.6		8.3		1102
RW-07	0	0	29°	6.5	5.8	0.7		8.2		1117
RW-08	300	12	30.5	6.4	4.3	2.1		8.2		1135
RW-09	0 G/O	4	30°	6.1	3.7	2.4		8.2		1125
WB										
<u>OUTFALLS</u>										
GEIGER						0.8				
TT						0.2				
CS						0.8				
HP						0.2				
RR						0.2				
CHB						0.4				
OB						0.4				

3m
Tr
scr
8.50
25.95
5.00

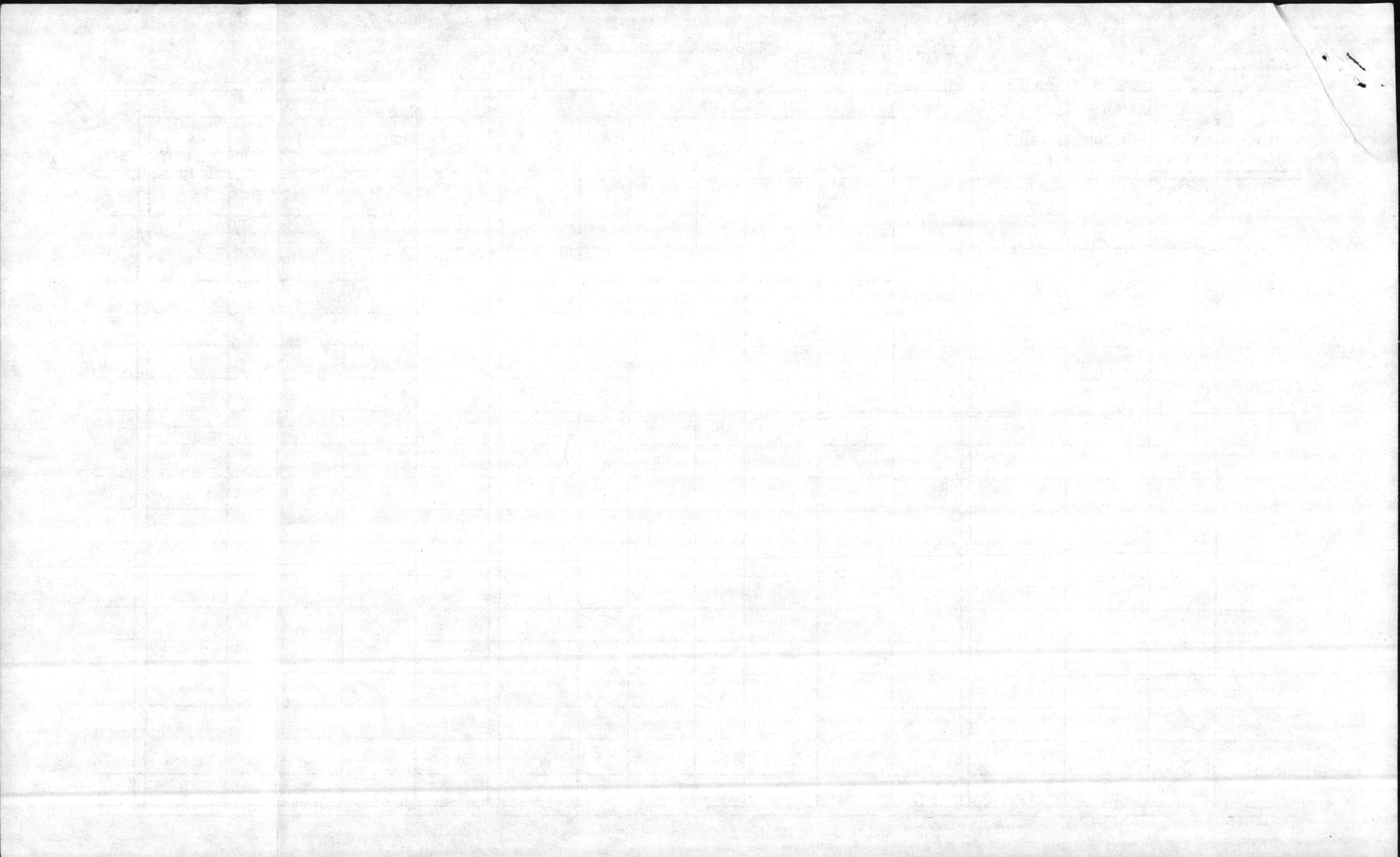
39.45

20.00
5.00

25.00
8.00

33.00

20.00
3,



BIOLOGICAL ANALYSIS OF RIVER WATER

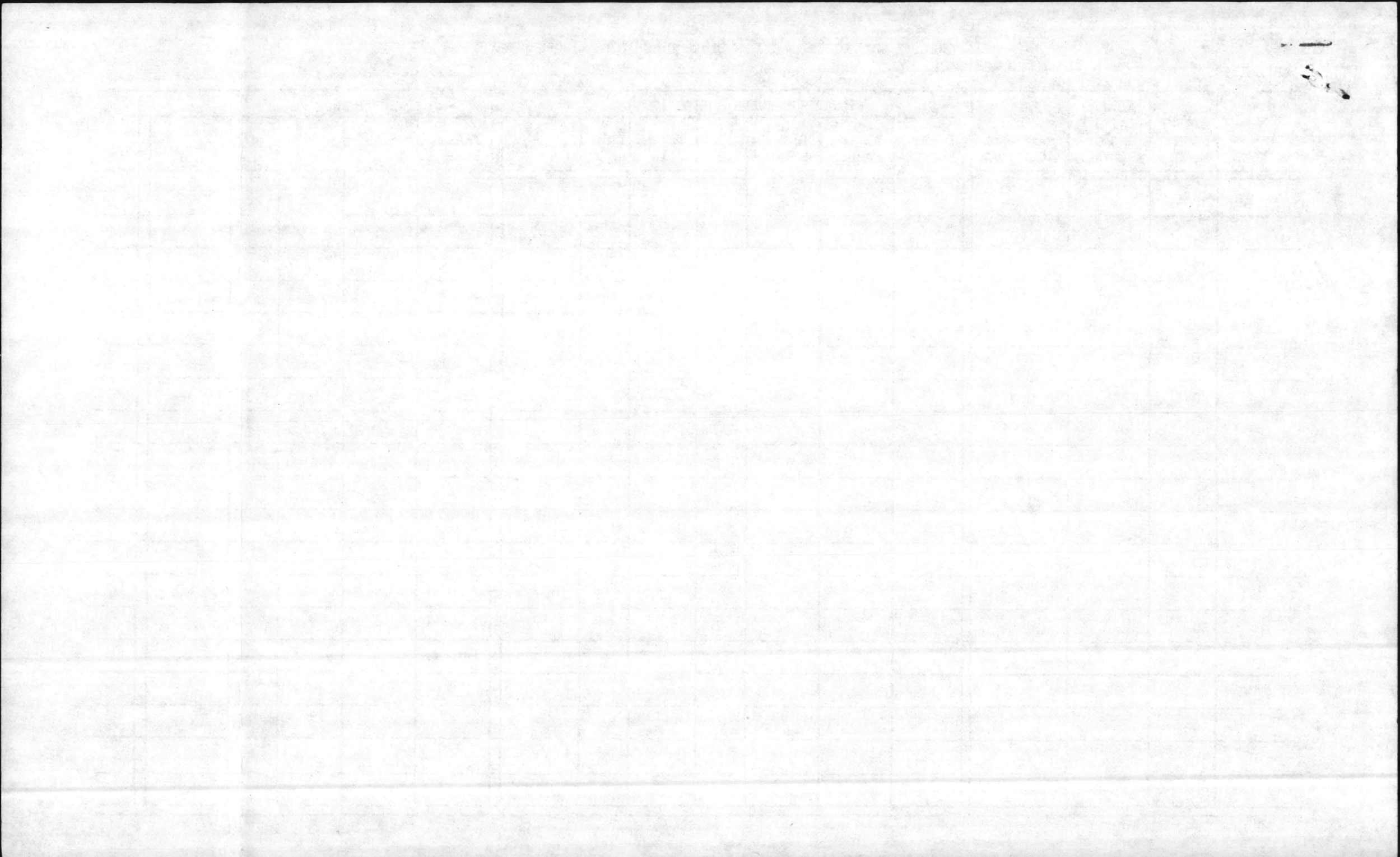
DATE COLLECTED

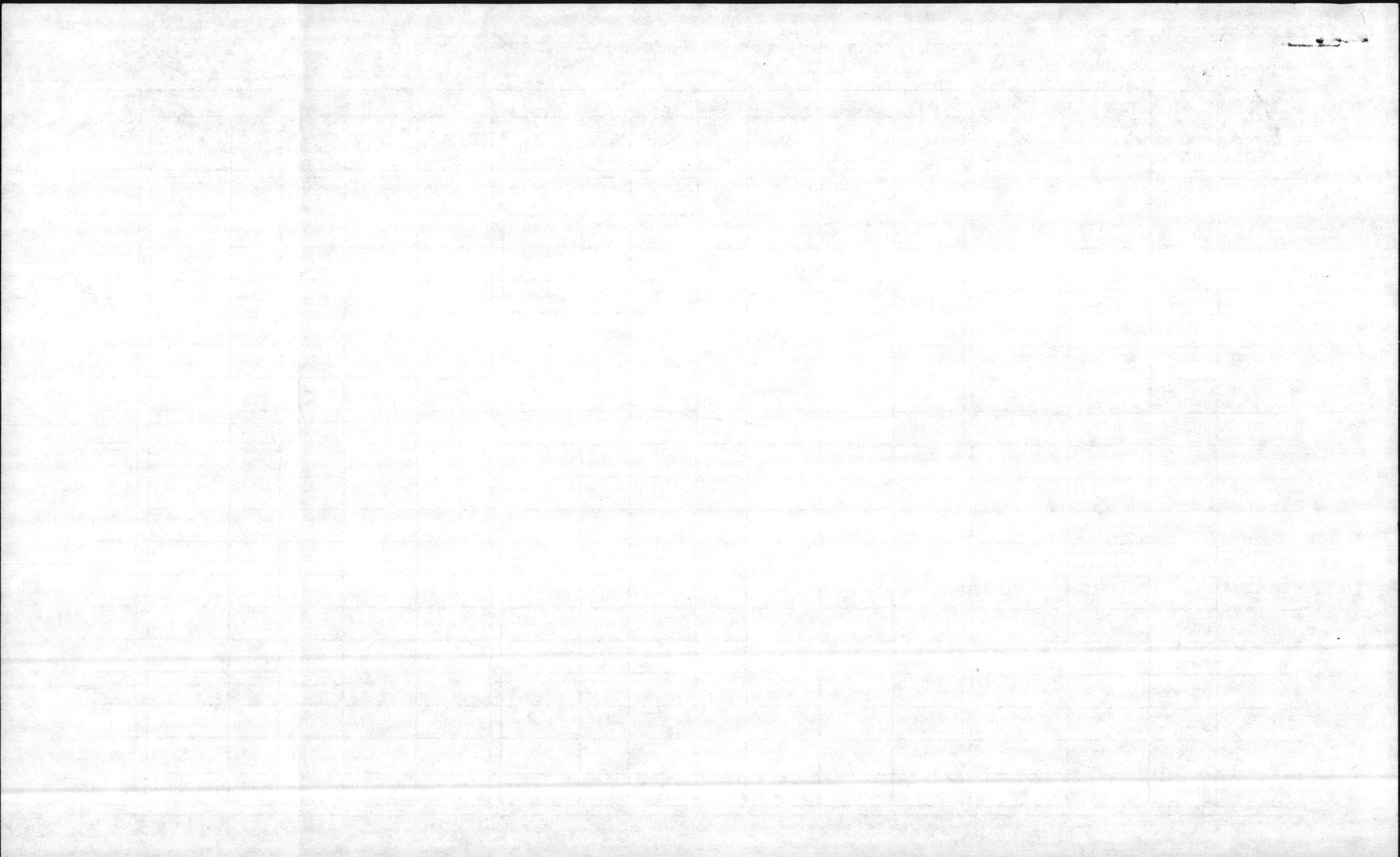
17 Sep 84

Recd 1 Oct 1984

B. S. S.

STATION NO.	TOTAL COLIFORM m ENDO MEDIUM	FECAL COLIFORM m F C MEDIUM	TEMP C	DO ppm	5 DAY BOD ppm		CHLORIDES ppm	P. H.	WIND	TIME
										TIDE
RW-01	1200	160	21°	3.7	3.2	0.5		6.58		0907
02	2800	150	20	4.5	3.9	0.6		6.76		0927
03	15000	400	20	5.1	4.5	0.6		6.93		0932
04	1800	200	22	6.1	5.2	0.9		7.29		0943
05	0	28	21	6.8	5.3	1.5		7.62		1005
06	400	0	21	7.0	6.0	1.0		7.76		1029
07	100	0	20	7.2	6.2	1.0		8.01		1044
08	0	4	20	7.0	5.8	1.2		8.09		1052
09	400	12	21	7.0	6.0	1.0		8.06		1103
							CL ₂ -			
CG	1700	80					0.2			
CS	10000	600					0.8			
T.T.	28000	800					0.2			
HP	200	16					0.2			
RR	100	4					0.2			
CHB	100	0					0.2			
OB	300	4					0.2			





BIOLOGICAL ANALYSIS OF RIVER WATER

MCBCL 11330/6

Recorded
11/20/84 GJB

DATE COLLECTED

15 Nov 84

STATION NO.	TOTAL COLIFORM mENDO MEDIUM	FECAL COLIFORM m F C MEDIUM	TEMP °C	DO ppm	5 DAY BOD ppm	CHLORIDES ppm	P. H.	WIND	TIME TIDE
RW-01	0.1 1.0 10 1200	1 10 90	11.0	7.8	5.3	2.5	7.3		0908
RW-02	0.1 1.0 12.0 100	1 10 70	12.0	6.6	5.2	1.4	7.7		0927
RW-03	0.1 1.0 10.0 700	1 10 120	12.0	9.4	6.0	3.4	7.5		0940
RW-04	1 10 50	1 10 0	12.5	9.7	7.3	2.4	8.0		0956
RW-05	1 10 70	1 10 20	11.5	9.9	7.2	2.7	8.0		1009
RW-06	1 10 0	1 10 0	12.5	9.1	7.4	1.7	8.1		1030
RW-07	1 10 0	1 10 0	15.5	8.0	7.0	1.0	8.2		1045
RW-08	1 10 0	1 10 0	14.0	8.5	7.4	1.1	8.2		1110
RW-09	1 10 0	1 10 0	13.0	8.5	7.5	1.0	8.2		1055
OUTFALLS		CL2							
CG	6000	0.2	100						0914
TT	300	0.2	20						0936
CG	400	0.2	70						0945
HP	10	0.2	0						1004
RR	0	0.2	0						1022
CHB	0	0.2	0						1037
OB	10	0.2	0						1104
— 0 —									
BactiWB	500		20						0917

BIOLOGICAL ANALYSIS OF RIVER WATER

MCBCL 11330/6

DATE COLLECTED

10 DEC 84

STATION NO.	TOTAL COLIFORM mENDO MEDIUM	FECAL COLIFORM m F C MEDIUM	TEMP C	DO ppm	5 DAY BOD ppm	CHLORIDES ppm	P. H.	WIND	TIDE
R1	10 1100 EST 25 06	10 120 25 06	8	8.0	6.2 1.8		7.1		0911
2	10 7000 EST 25 06	10 440 25 06	9	9.6	3.4 6.2		7.0		0936
3	10 2600 EST 25 06	10 180 25 06	9	11.4	7.2 4.2		7.6		0944
4	10 10 25 12	10 0 25 0	8.5	11.1	7.2 3.9		8.1		0957
5	10 0 25 4	10 0 25 0	8.5	10.9	8.4 2.5		8.2		1013
6	10 10 25 24	10 0 25 0	9	9.7	8.3 1.4		8.1		1029
7	25 0	25 0	11	8.5	7.9 0.6		8.1		1040
8	25 0	25 0	11	8.4	7.8 0.6		8.1		1058
9	25 4	25 0	10.5	9.2	8.1 1.1		8.1		1048
OUTFALLS									
- CG	1 200 10 06	1 0 10 50							0913
- TT	1 200 10 100	1 0 10 10							0941
- CJ	1 100 10 10	1 0 10 0							0948
- HP	1 0 10 10	1 0 10 0							1015
- LR	1 0 10 0	1 0 10 0							1022
- CHB	1 0 10 10	1 0 10 0							1033
- OB	1 0 10 0	1 0 10 0							1054
- WB	1 400 10 06	1 0 10 60							

