



UNITED STATES MARINE CORPS
Natural Resources and Environmental Affairs Division
Marine Corps Base
Camp Lejeune, North Carolina 29542

IN REPLY REFER TO:
6240/3
NREAD
29 May 1985

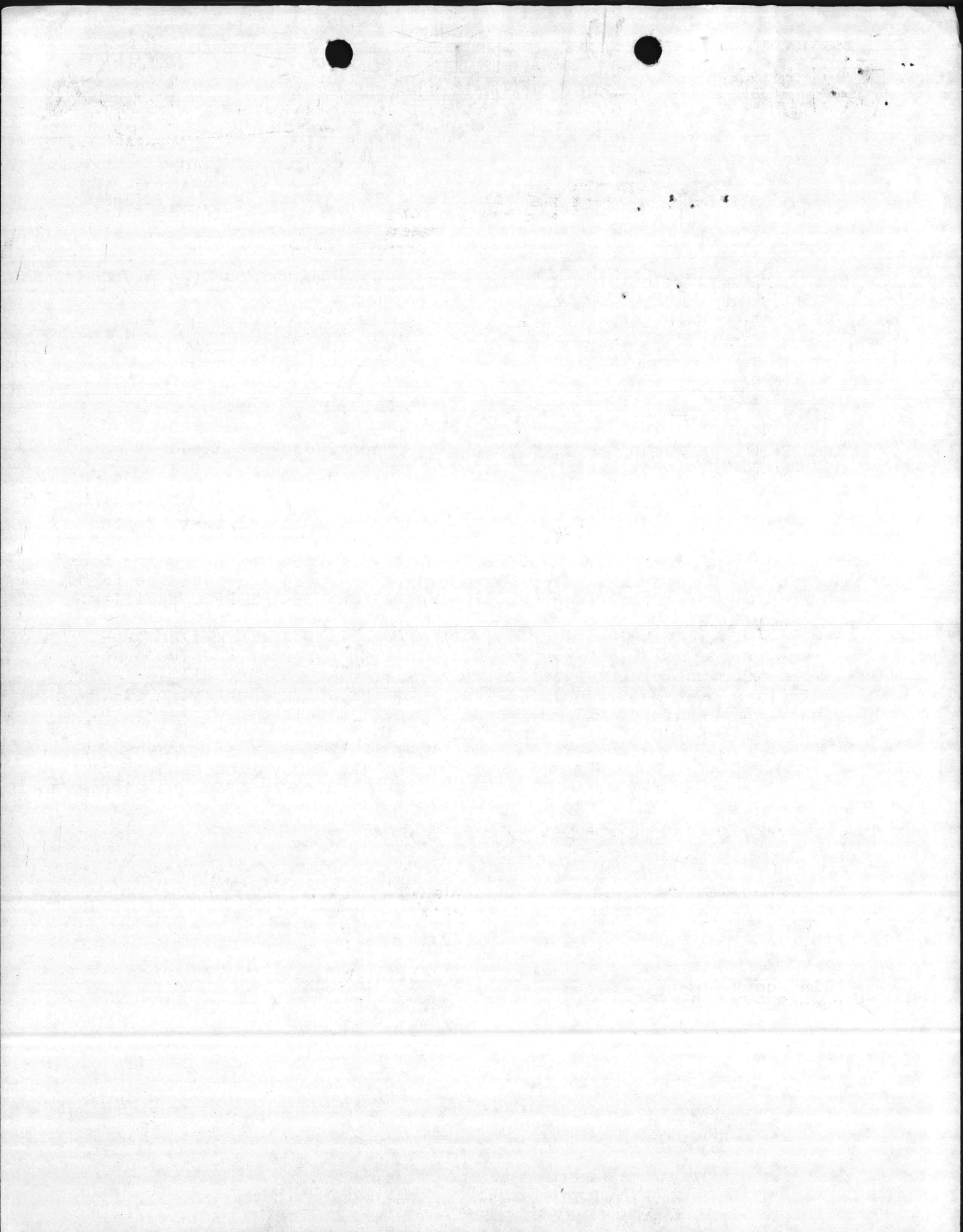
From: Director, Natural Resources and Environmental Affairs Division, Marine Corps Base, Camp Lejeune
To: Base Maintenance Officer, Marine Corps Base, Camp Lejeune
Subj: TRANSFORMER DISPOSAL; POLYCHLORINATED BIPHENYL (PCB) ANALYSIS RESULTS
Ref: (a) BO 6240.5
Encl: (1) Grainger Laboratories, Inc. Report #0853202 dated 24 April 1985

1. The enclosure is provided for use in turn-in of used transformers to DPDO. The results indicate that none of the transformers tested met the 500 Part Per Million (PPM) PCB limit for "PCB Transformers". However, 12 transformers had 50 to 499 PPM of PCB, which require management as "PCB Contaminated Transformers". These 12 should be turned in to DPDO per the reference and stored at the TP-451 DPDO facility.
2. The sample from Westinghouse transformer 15KVA, 10 gallon capacity, Serial #61113602 was broken. This transformer should be retained for resampling. The Supervisory Chemist, NREAD, will be contacting Base Maintenance Officer representative shortly to re-sample this transformer. Point of contact in this matter is Mr. D. Sharpe, extension 2083.
3. The remaining transformers, including the empty Line Material Transformer, Serial #1156224, should be turned in to DPDO and stored at Lot 203.

J. I. WOOTEN

Copy to:
DPDO w/o Encl

→ Blind copy to:
SupvChem





Grainger Laboratories Incorporated

Analytical and Consulting Chemists

DATE 4/24/85
GLI# 0853202

PAGE 1

Quality Control Lab, USMCB
Att: Elizabeth Betz, Supvr
NREAD, Building 1103
Camp Lejeune, NC 28542

SUBJECT: ANALYSIS OF SAMPLES RECEIVED 4/03/85.

REFERENCE: PO NUMBER M67001-85-M-0610

RESULTS

SAMPLE NUMBER: 0853202-001
IDENTIFIER: TRANSFORMER OIL #1284

*Westinghouse, 3KVA, 5gallon
Serial # 6424542*

PARAMETER	UNIT OF MEASURE	RESULT	DETECT LIMIT	METHOD
AROCLOR 1016	ug/g	BDL	1.0	EPA
AROCLOR 1221	ug/g	BDL	1.0	EPA
AROCLOR 1232	ug/g	BDL	1.0	EPA
AROCLOR 1242	ug/g	BDL	1.0	EPA
AROCLOR 1248	ug/g	BDL	1.0	EPA
AROCLOR 1254	ug/g	BDL	1.0	EPA
AROCLOR 1260	ug/g	2.8	1.0	EPA
TOTAL AROCLORS	ug/g	2.8	1.0	EPA

SAMPLE NUMBER: 0853202-002
IDENTIFIER: TRANSFORMER OIL #1285

*GE, 10KVA, 5gallon
Serial # 8486164*

PARAMETER	UNIT OF MEASURE	RESULT	DETECT LIMIT	METHOD
AROCLOR 1016	ug/g	BDL	1.0	EPA
AROCLOR 1221	ug/g	BDL	1.0	EPA
AROCLOR 1232	ug/g	BDL	1.0	EPA
AROCLOR 1242	ug/g	BDL	1.0	EPA
AROCLOR 1248	ug/g	BDL	1.0	EPA
AROCLOR 1254	ug/g	BDL	1.0	EPA
AROCLOR 1260	ug/g	96	1.0	EPA
TOTAL AROCLORS	ug/g	96	1.0	EPA



Very faint, illegible text at the top of the page, possibly a header or title.

Very faint, illegible text in the middle section of the page.

Very faint, illegible text in the lower middle section of the page.

Very faint, illegible text at the bottom of the page.

DATE 4/24/85
GLI# 0853202

PAGE 2

SAMPLE NUMBER: 0853202-003
IDENTIFIER: TRANSFORMER OIL #1286

Allis Chalmers, 10 KVA, 5 gallon ✓
SERIAL # 741063 08974

PARAMETER	UNIT OF MEASURE	RESULT	DETECT LIMIT	METHOD
AROCLOR 1016	ug/g	BDL	1.0	EPA
AROCLOR 1221	ug/g	BDL	1.0	EPA
AROCLOR 1232	ug/g	BDL	1.0	EPA
AROCLOR 1242	ug/g	BDL	1.0	EPA
AROCLOR 1248	ug/g	BDL	1.0	EPA
AROCLOR 1254	ug/g	BDL	1.0	EPA
AROCLOR 1260	ug/g	1.4	1.0	EPA
TOTAL AROCLORS	ug/g	1.4	1.0	EPA

SAMPLE NUMBER: 0853202-004
IDENTIFIER: TRANSFORMER OIL #1287

Allis Chalmers 10KVA 5gallon ✓
SERIAL # 5200110

PARAMETER	UNIT OF MEASURE	RESULT	DETECT LIMIT	METHOD
AROCLOR 1016	ug/g	BDL	1.0	EPA
AROCLOR 1221	ug/g	BDL	1.0	EPA
AROCLOR 1232	ug/g	BDL	1.0	EPA
AROCLOR 1242	ug/g	BDL	1.0	EPA
AROCLOR 1248	ug/g	BDL	1.0	EPA
AROCLOR 1254	ug/g	BDL	1.0	EPA
AROCLOR 1260	ug/g	BDL	1.0	EPA
TOTAL AROCLORS	ug/g	BDL	1.0	EPA

SAMPLE NUMBER: 0853202-005
IDENTIFIER: TRANSFORMER OIL #1288

GE 15 KVA, 5 gallon ✓
SERIAL # H6676 HB 468

PARAMETER	UNIT OF MEASURE	RESULT	DETECT LIMIT	METHOD
AROCLOR 1016	ug/g	BDL	1.0	EPA
AROCLOR 1221	ug/g	BDL	1.0	EPA
AROCLOR 1232	ug/g	BDL	1.0	EPA
AROCLOR 1242	ug/g	BDL	1.0	EPA
AROCLOR 1248	ug/g	BDL	1.0	EPA
AROCLOR 1254	ug/g	BDL	1.0	EPA
AROCLOR 1260	ug/g	BDL	1.0	EPA
TOTAL AROCLORS	ug/g	BDL	1.0	EPA

11/21/54
11/21/54

11/21/54
11/21/54

DATE 4/24/85
GLI# 0853202

PAGE 3

SAMPLE NUMBER: 0853202-006
IDENTIFIER: TRANSFORMER OIL #1289*Westinghouse, 3 KVA 5 Gal.
Serial # 35 33213*

PARAMETER	UNIT OF MEASURE	RESULT	DETECT LIMIT	METHOD
AROCLOR 1016	ug/g	BDL	1.0	EPA
AROCLOR 1221	ug/g	BDL	1.0	EPA
AROCLOR 1232	ug/g	BDL	1.0	EPA
AROCLOR 1242	ug/g	BDL	1.0	EPA
AROCLOR 1248	ug/g	BDL	1.0	EPA
AROCLOR 1254	ug/g	BDL	1.0	EPA
AROCLOR 1260	ug/g	17	1.0	EPA
TOTAL AROCLORS	ug/g	17	1.0	EPA

SAMPLE NUMBER: 0853202-007
IDENTIFIER: TRANSFORMER OIL #1290*Westinghouse, 10 KVA, 5 Gal.
Serial # 3142086*

PARAMETER	UNIT OF MEASURE	RESULT	DETECT LIMIT	METHOD
AROCLOR 1016	ug/g	BDL	1.0	EPA
AROCLOR 1221	ug/g	BDL	1.0	EPA
AROCLOR 1232	ug/g	BDL	1.0	EPA
AROCLOR 1242	ug/g	BDL	1.0	EPA
AROCLOR 1248	ug/g	BDL	1.0	EPA
AROCLOR 1254	ug/g	BDL	1.0	EPA
AROCLOR 1260	ug/g	6.3	1.0	EPA
TOTAL AROCLORS	ug/g	6.3	1.0	EPA

SAMPLE NUMBER: 0853202-008
IDENTIFIER: TRANSFORMER OIL #1291*Westinghouse, 25 KVA 25 Gal.
Ser. # 55516756*

PARAMETER	UNIT OF MEASURE	RESULT	DETECT LIMIT	METHOD
AROCLOR 1016	ug/g	BDL	1.0	EPA
AROCLOR 1221	ug/g	BDL	1.0	EPA
AROCLOR 1232	ug/g	BDL	1.0	EPA
AROCLOR 1242	ug/g	BDL	1.0	EPA
AROCLOR 1248	ug/g	BDL	1.0	EPA
AROCLOR 1254	ug/g	BDL	1.0	EPA
AROCLOR 1260	ug/g	340	1.0	EPA
TOTAL AROCLORS	ug/g	(340)	1.0	EPA

Westinghouse 3KVA 2.00
Zer # 22-05518

Westinghouse 10KVA 2.00
Zer # 915624

Westinghouse 52KVA 2.00
Zer # 2201170



DATE 4/24/85
GLI# 0853202

PAGE 4

SAMPLE NUMBER: 0853202-009
IDENTIFIER: TRANSFORMER OIL #1292

GE, 25 KVA, 25 Gal.
Ser. # B546992

PARAMETER	UNIT OF MEASURE	RESULT	DETECT LIMIT	METHOD
AROCLOR 1016	ug/g	BDL	1.0	EPA
AROCLOR 1221	ug/g	BDL	1.0	EPA
AROCLOR 1232	ug/g	BDL	1.0	EPA
AROCLOR 1242	ug/g	BDL	1.0	EPA
AROCLOR 1248	ug/g	BDL	1.0	EPA
AROCLOR 1254	ug/g	BDL	1.0	EPA
AROCLOR 1260	ug/g	99	1.0	EPA
TOTAL AROCLORS	ug/g	99	1.0	EPA

SAMPLE NUMBER: 0853202-010
IDENTIFIER: TRANSFORMER OIL #1293

Delta Star, 25 KVA, 25 Gal
Ser. # T500524

PARAMETER	UNIT OF MEASURE	RESULT	DETECT LIMIT	METHOD
AROCLOR 1016	ug/g	BDL	1.0	EPA
AROCLOR 1221	ug/g	BDL	1.0	EPA
AROCLOR 1232	ug/g	BDL	1.0	EPA
AROCLOR 1242	ug/g	BDL	1.0	EPA
AROCLOR 1248	ug/g	BDL	1.0	EPA
AROCLOR 1254	ug/g	BDL	1.0	EPA
AROCLOR 1260	ug/g	BDL	1.0	EPA
TOTAL AROCLORS	ug/g	BDL	1.0	EPA

SAMPLE NUMBER: 0853202-011
IDENTIFIER: TRANSFORMER OIL #1294

Westinghouse, 25 KVA, 25 Gal
Ser. # 5756035

PARAMETER	UNIT OF MEASURE	RESULT	DETECT LIMIT	METHOD
AROCLOR 1016	ug/g	BDL	1.0	EPA
AROCLOR 1221	ug/g	BDL	1.0	EPA
AROCLOR 1232	ug/g	BDL	1.0	EPA
AROCLOR 1242	ug/g	BDL	1.0	EPA
AROCLOR 1248	ug/g	BDL	1.0	EPA
AROCLOR 1254	ug/g	BDL	1.0	EPA
AROCLOR 1260	ug/g	310	1.0	EPA
TOTAL AROCLORS	ug/g	310	1.0	EPA

REC # B2HADDJ
GE 52KVA 52PST

REC # T200254
Delta Star BKVA 52PST

REC # 212 0032
Westinghouse 52KVA

DATE 4/24/85
GLI# 0853202

PAGE 5

SAMPLE NUMBER: 0853202-012
IDENTIFIER: TRANSFORMER OIL #1295

GE 75 KVA 40 Gal.
Ser. # L367037Y74AA

PARAMETER	UNIT OF MEASURE	RESULT	DETECT LIMIT	METHOD
AROCLOR 1016	ug/g	BDL	1.0	EPA
AROCLOR 1221	ug/g	BDL	1.0	EPA
AROCLOR 1232	ug/g	BDL	1.0	EPA
AROCLOR 1242	ug/g	BDL	1.0	EPA
AROCLOR 1248	ug/g	BDL	1.0	EPA
AROCLOR 1254	ug/g	BDL	1.0	EPA
AROCLOR 1260	ug/g	2.2	1.0	EPA
TOTAL AROCLORS	ug/g	2.2	1.0	EPA

SAMPLE NUMBER: 0853202-013
IDENTIFIER: TRANSFORMER OIL #1296

GE 75 KVA 40 Gal.
Ser. # L828467Y DWA

PARAMETER	UNIT OF MEASURE	RESULT	DETECT LIMIT	METHOD
AROCLOR 1016	ug/g	BDL	1.0	EPA
AROCLOR 1221	ug/g	BDL	1.0	EPA
AROCLOR 1232	ug/g	BDL	1.0	EPA
AROCLOR 1242	ug/g	BDL	1.0	EPA
AROCLOR 1248	ug/g	BDL	1.0	EPA
AROCLOR 1254	ug/g	BDL	1.0	EPA
AROCLOR 1260	ug/g	BDL	1.0	EPA
TOTAL AROCLORS	ug/g	BDL	1.0	EPA

SAMPLE NUMBER: 0853202-014
IDENTIFIER: TRANSFORMER OIL #1297

Line Material 15 KVA
Ser. # 1268424 10 Gal

PARAMETER	UNIT OF MEASURE	RESULT	DETECT LIMIT	METHOD
AROCLOR 1016	ug/g	BDL	1.0	EPA
AROCLOR 1221	ug/g	BDL	1.0	EPA
AROCLOR 1232	ug/g	BDL	1.0	EPA
AROCLOR 1242	ug/g	BDL	1.0	EPA
AROCLOR 1248	ug/g	BDL	1.0	EPA
AROCLOR 1254	ug/g	BDL	1.0	EPA
AROCLOR 1260	ug/g	BDL	1.0	EPA
TOTAL AROCLORS	ug/g	BDL	1.0	EPA

255 # T 39034444
GE JKVA HOG 51

255 # T 858444 DM
GE JKVA HOG 51

255 # T 858 H 54 10 G 51
Line Material JKVA

DATE 4/24/85
GLI# 0853202

PAGE 6

SAMPLE NUMBER: 0853202-015
IDENTIFIER: TRANSFORMER OIL #1298

Westinghouse 5 KVA 5 Gal
Ser. # 3532454

PARAMETER	UNIT OF MEASURE	RESULT	DETECT LIMIT	METHOD
AROCLOR 1016	ug/g	BDL	1.0	EPA
AROCLOR 1221	ug/g	BDL	1.0	EPA
AROCLOR 1232	ug/g	BDL	1.0	EPA
AROCLOR 1242	ug/g	BDL	1.0	EPA
AROCLOR 1248	ug/g	BDL	1.0	EPA
AROCLOR 1254	ug/g	BDL	1.0	EPA
AROCLOR 1260	ug/g	6.2	1.0	EPA
TOTAL AROCLORS	ug/g	6.2	1.0	EPA

SAMPLE NUMBER: 0853202-016
IDENTIFIER: TRANSFORMER OIL #1299

Fisler Engineering 37.5 KVA
Ser. # 54035-C 42 Gal

PARAMETER	UNIT OF MEASURE	RESULT	DETECT LIMIT	METHOD
AROCLOR 1016	ug/g	BDL	1.0	EPA
AROCLOR 1221	ug/g	BDL	1.0	EPA
AROCLOR 1232	ug/g	BDL	1.0	EPA
AROCLOR 1242	ug/g	BDL	1.0	EPA
AROCLOR 1248	ug/g	BDL	1.0	EPA
AROCLOR 1254	ug/g	BDL	1.0	EPA
AROCLOR 1260	ug/g	BDL	1.0	EPA
TOTAL AROCLORS	ug/g	BDL	1.0	EPA

SAMPLE NUMBER: 0853202-017
IDENTIFIER: TRANSFORMER OIL #1300

GE 100 KVA 40 Gal
Ser. # 8671240

PARAMETER	UNIT OF MEASURE	RESULT	DETECT LIMIT	METHOD
AROCLOR 1016	ug/g	BDL	1.0	EPA
AROCLOR 1221	ug/g	BDL	1.0	EPA
AROCLOR 1232	ug/g	BDL	1.0	EPA
AROCLOR 1242	ug/g	BDL	1.0	EPA
AROCLOR 1248	ug/g	BDL	1.0	EPA
AROCLOR 1254	ug/g	BDL	1.0	EPA
AROCLOR 1260	ug/g	220	1.0	EPA
TOTAL AROCLORS	ug/g	220	1.0	EPA

Westinghouse 2 KVA 450V
Set # 32-85+24

Esler Engineering 31.2 KVA
Set # H032-G

25A #8P115401
GE 100 KVA 480V

DATE 4/24/85
GLI# 0853202

PAGE 7

SAMPLE NUMBER: 0853202-018
IDENTIFIER: TRANSFORMER OIL #1301

*Eisler Engineering 875 KVA
Ser. # 6344/z 42 Gal*

PARAMETER	UNIT OF MEASURE	RESULT	DETECT LIMIT	METHOD
AROCLOR 1016	ug/g	BDL	1.0	EPA
AROCLOR 1221	ug/g	BDL	1.0	EPA
AROCLOR 1232	ug/g	BDL	1.0	EPA
AROCLOR 1242	ug/g	BDL	1.0	EPA
AROCLOR 1248	ug/g	BDL	1.0	EPA
AROCLOR 1254	ug/g	BDL	1.0	EPA
AROCLOR 1260	ug/g	BDL	1.0	EPA
TOTAL AROCLORS	ug/g	BDL	1.0	EPA

SAMPLE NUMBER: 0853202-019
IDENTIFIER: TRANSFORMER OIL #1302

*Westinghouse 25 KVA 25 Gal
Ser. 4811364*

PARAMETER	UNIT OF MEASURE	RESULT	DETECT LIMIT	METHOD
AROCLOR 1016	ug/g	BDL	1.0	EPA
AROCLOR 1221	ug/g	BDL	1.0	EPA
AROCLOR 1232	ug/g	BDL	1.0	EPA
AROCLOR 1242	ug/g	BDL	1.0	EPA
AROCLOR 1248	ug/g	BDL	1.0	EPA
AROCLOR 1254	ug/g	BDL	1.0	EPA
AROCLOR 1260	ug/g	BDL	1.0	EPA
TOTAL AROCLORS	ug/g	BDL	1.0	EPA

SAMPLE NUMBER: 0853202-020
IDENTIFIER: TRANSFORMER OIL #1303

*GE 5 KVA 30 Gal
Ser. # D305901*

PARAMETER	UNIT OF MEASURE	RESULT	DETECT LIMIT	METHOD
AROCLOR 1016	ug/g	BDL	1.0	EPA
AROCLOR 1221	ug/g	BDL	1.0	EPA
AROCLOR 1232	ug/g	BDL	1.0	EPA
AROCLOR 1242	ug/g	BDL	1.0	EPA
AROCLOR 1248	ug/g	BDL	1.0	EPA
AROCLOR 1254	ug/g	BDL	1.0	EPA
AROCLOR 1260	ug/g	130	1.0	EPA
TOTAL AROCLORS	ug/g	130	1.0	EPA

200 # 0304/2
First Engineering S.S.K.A.V.
H.B.C.

200 # H.B.H.P.H
Westinghouse S.S.K.A.V. S.S.P.

200 # D.30.2001
GE S.S.K.A.V. 3005/1

DATE 4/24/85
GLI# 0853202

PAGE 8

SAMPLE NUMBER: 0853202-021
IDENTIFIER: TRANSFORMER OIL #1304

*Line Material 37.5 KVA
Ser. # E5184204 15 Gal*

PARAMETER	UNIT OF MEASURE	RESULT	DETECT LIMIT	METHOD
AROCLOR 1016	ug/g	BDL	1.0	EPA
AROCLOR 1221	ug/g	BDL	1.0	EPA
AROCLOR 1232	ug/g	BDL	1.0	EPA
AROCLOR 1242	ug/g	BDL	1.0	EPA
AROCLOR 1248	ug/g	BDL	1.0	EPA
AROCLOR 1254	ug/g	BDL	1.0	EPA
AROCLOR 1260	ug/g	10	1.0	EPA
TOTAL AROCLORS	ug/g	10	1.0	EPA

SAMPLE NUMBER: 0853202-022
IDENTIFIER: TRANSFORMER OIL #1305

*Westinghouse 37.5 KVA 20 Gal
Ser. # 55E4876*

PARAMETER	UNIT OF MEASURE	RESULT	DETECT LIMIT	METHOD
AROCLOR 1016	ug/g	BDL	1.0	EPA
AROCLOR 1221	ug/g	BDL	1.0	EPA
AROCLOR 1232	ug/g	BDL	1.0	EPA
AROCLOR 1242	ug/g	BDL	1.0	EPA
AROCLOR 1248	ug/g	BDL	1.0	EPA
AROCLOR 1254	ug/g	BDL	1.0	EPA
AROCLOR 1260	ug/g	5.5	1.0	EPA
TOTAL AROCLORS	ug/g	5.5	1.0	EPA

SAMPLE NUMBER: 0853202-023
IDENTIFIER: TRANSFORMER OIL #1306

*Westinghouse 37.5 KVA 20 Gal
Ser. # 55E4786*

PARAMETER	UNIT OF MEASURE	RESULT	DETECT LIMIT	METHOD
AROCLOR 1016	ug/g	BDL	1.0	EPA
AROCLOR 1221	ug/g	BDL	1.0	EPA
AROCLOR 1232	ug/g	BDL	1.0	EPA
AROCLOR 1242	ug/g	BDL	1.0	EPA
AROCLOR 1248	ug/g	BDL	1.0	EPA
AROCLOR 1254	ug/g	BDL	1.0	EPA
AROCLOR 1260	ug/g	5.2	1.0	EPA
TOTAL AROCLORS	ug/g	5.2	1.0	EPA

Gen # E 2184504
Line Material 312 KV

Gen # 2254829
Westinghouse 312 KV

Gen # 2254829
Westinghouse 312 KV

DATE 4/24/85
GLI# 0853202

PAGE 9

SAMPLE NUMBER: 0853202-024
IDENTIFIER: TRANSFORMER OIL #1307

*Westinghouse 37.5 KVA 20Gal.
Ser. # 55E 4760*

PARAMETER	UNIT OF MEASURE	RESULT	DETECT LIMIT	METHOD
AROCLOR 1016	ug/g	BDL	1.0	EPA
AROCLOR 1221	ug/g	BDL	1.0	EPA
AROCLOR 1232	ug/g	BDL	1.0	EPA
AROCLOR 1242	ug/g	BDL	1.0	EPA
AROCLOR 1248	ug/g	BDL	1.0	EPA
AROCLOR 1254	ug/g	BDL	1.0	EPA
AROCLOR 1260	ug/g	5.3	1.0	EPA
TOTAL AROCLORS	ug/g	5.3	1.0	EPA

SAMPLE NUMBER: 0853202-025
IDENTIFIER: TRANSFORMER OIL #1308

*Allis-Chalmer 75KVA 83Gal
Ser. # 1789913*

PARAMETER	UNIT OF MEASURE	RESULT	DETECT LIMIT	METHOD
AROCLOR 1016	ug/g	BDL	1.0	EPA
AROCLOR 1221	ug/g	BDL	1.0	EPA
AROCLOR 1232	ug/g	BDL	1.0	EPA
AROCLOR 1242	ug/g	BDL	1.0	EPA
AROCLOR 1248	ug/g	BDL	1.0	EPA
AROCLOR 1254	ug/g	BDL	1.0	EPA
AROCLOR 1260	ug/g	3.8	1.0	EPA
TOTAL AROCLORS	ug/g	3.8	1.0	EPA

SAMPLE NUMBER: 0853202-026
IDENTIFIER: TRANSFORMER OIL #1309

*Allis-Chalmer 75KVA 30Gal
Ser. # 3440362*

PARAMETER	UNIT OF MEASURE	RESULT	DETECT LIMIT	METHOD
AROCLOR 1016	ug/g	BDL	1.0	EPA
AROCLOR 1221	ug/g	BDL	1.0	EPA
AROCLOR 1232	ug/g	BDL	1.0	EPA
AROCLOR 1242	ug/g	BDL	1.0	EPA
AROCLOR 1248	ug/g	BDL	1.0	EPA
AROCLOR 1254	ug/g	BDL	1.0	EPA
AROCLOR 1260	ug/g	6.7	1.0	EPA
TOTAL AROCLORS	ug/g	6.7	1.0	EPA

Dr. # 25E4190
Westinghouse 31.2 KVA 5000

Dr. # 34N03PS
Allis-Chalmers 12 KVA 8000

Dr. # 34N03PS
Allis-Chalmers 12 KVA 8000

DATE 4/24/85
GLI# 0853202

PAGE 10

SAMPLE NUMBER: 0853202-027
IDENTIFIER: TRANSFORMER OIL #1310

GE 37.5 KVA 40 Gal.
Ser. # D97856859 Y

PARAMETER	UNIT OF MEASURE	RESULT	DETECT LIMIT	METHOD
AROCLOR 1016	ug/g	BDL	1.0	EPA
AROCLOR 1221	ug/g	BDL	1.0	EPA
AROCLOR 1232	ug/g	BDL	1.0	EPA
AROCLOR 1242	ug/g	BDL	1.0	EPA
AROCLOR 1248	ug/g	BDL	1.0	EPA
AROCLOR 1254	ug/g	BDL	1.0	EPA
AROCLOR 1260	ug/g	BDL	1.0	EPA
TOTAL AROCLORS	ug/g	BDL	1.0	EPA

SAMPLE NUMBER: 0853202-028
IDENTIFIER: TRANSFORMER OIL #1311

Wagner 37.5 KVA 30 Gal.
Ser. # F5H1833

PARAMETER	UNIT OF MEASURE	RESULT	DETECT LIMIT	METHOD
AROCLOR 1016	ug/g	BDL	1.0	EPA
AROCLOR 1221	ug/g	BDL	1.0	EPA
AROCLOR 1232	ug/g	BDL	1.0	EPA
AROCLOR 1242	ug/g	BDL	1.0	EPA
AROCLOR 1248	ug/g	BDL	1.0	EPA
AROCLOR 1254	ug/g	1.4	1.0	EPA
AROCLOR 1260	ug/g	BDL	1.0	EPA
TOTAL AROCLORS	ug/g	1.4	1.0	EPA

SAMPLE NUMBER: 0853202-029
IDENTIFIER: TRANSFORMER OIL #1312

GE 37.5 KVA 30 Gal.
Ser. # D97573359 Y

PARAMETER	UNIT OF MEASURE	RESULT	DETECT LIMIT	METHOD
AROCLOR 1016	ug/g	BDL	1.0	EPA
AROCLOR 1221	ug/g	BDL	1.0	EPA
AROCLOR 1232	ug/g	BDL	1.0	EPA
AROCLOR 1242	ug/g	BDL	1.0	EPA
AROCLOR 1248	ug/g	BDL	1.0	EPA
AROCLOR 1254	ug/g	BDL	1.0	EPA
AROCLOR 1260	ug/g	BDL	1.0	EPA
TOTAL AROCLORS	ug/g	BDL	1.0	EPA

Sec # D1121831
GE 912KVA 30601

Sec # F2H1833
W 912KVA 30601

Sec # D1121831
GE 912KVA 30601

DATE 4/24/85
GLI# 0853202

PAGE 11

SAMPLE NUMBER: 0853202-030
IDENTIFIER: TRANSFORMER OIL #1313

Wagner 37.5 KVA 34 Gal.
Ser. # F5H1828

PARAMETER	UNIT OF MEASURE	RESULT	DETECT LIMIT	METHOD
AROCLOR 1016	ug/g	BDL	1.0	EPA
AROCLOR 1221	ug/g	BDL	1.0	EPA
AROCLOR 1232	ug/g	BDL	1.0	EPA
AROCLOR 1242	ug/g	BDL	1.0	EPA
AROCLOR 1248	ug/g	BDL	1.0	EPA
AROCLOR 1254	ug/g	BDL	1.0	EPA
AROCLOR 1260	ug/g	2.0	1.0	EPA
TOTAL AROCLORS	ug/g	2.0	1.0	EPA

SAMPLE NUMBER: 0853202-031
IDENTIFIER: TRANSFORMER OIL #1314

GE 75 KVA 50 Gal.
Ser. # C119617

PARAMETER	UNIT OF MEASURE	RESULT	DETECT LIMIT	METHOD
AROCLOR 1016	ug/g	BDL	1.0	EPA
AROCLOR 1221	ug/g	BDL	1.0	EPA
AROCLOR 1232	ug/g	BDL	1.0	EPA
AROCLOR 1242	ug/g	BDL	1.0	EPA
AROCLOR 1248	ug/g	BDL	1.0	EPA
AROCLOR 1254	ug/g	BDL	1.0	EPA
AROCLOR 1260	ug/g	71	1.0	EPA
TOTAL AROCLORS	ug/g	71	1.0	EPA

SAMPLE NUMBER: 0853202-032
IDENTIFIER: TRANSFORMER OIL #1315

GE 100 KVA 50 Gal.
Ser. # B974347

PARAMETER	UNIT OF MEASURE	RESULT	DETECT LIMIT	METHOD
AROCLOR 1016	ug/g	BDL	1.0	EPA
AROCLOR 1221	ug/g	BDL	1.0	EPA
AROCLOR 1232	ug/g	BDL	1.0	EPA
AROCLOR 1242	ug/g	BDL	1.0	EPA
AROCLOR 1248	ug/g	BDL	1.0	EPA
AROCLOR 1254	ug/g	BDL	1.0	EPA
AROCLOR 1260	ug/g	99	1.0	EPA
TOTAL AROCLORS	ug/g	99	1.0	EPA

DEC 4 1961
MORNING: 31 SKA 31 901

DEC 4 1961
E 12 KYA 20 901

DEC 4 1961
GE 100 KYA 20 901

DATE 4/24/85
GLI# 0853202

PAGE 12

SAMPLE NUMBER: 0853202-033
IDENTIFIER: TRANSFORMER OIL #1316

*GE 75 KVA 50 Gal
Ser.# C12274*

PARAMETER	UNIT OF MEASURE	RESULT	DETECT LIMIT	METHOD
AROCLOR 1016	ug/g	BDL	1.0	EPA
AROCLOR 1221	ug/g	BDL	1.0	EPA
AROCLOR 1232	ug/g	BDL	1.0	EPA
AROCLOR 1242	ug/g	BDL	1.0	EPA
AROCLOR 1248	ug/g	BDL	1.0	EPA
AROCLOR 1254	ug/g	BDL	1.0	EPA
AROCLOR 1260	ug/g	52	1.0	EPA
TOTAL AROCLORS	ug/g	52	1.0	EPA

SAMPLE NUMBER: 0853202-034
IDENTIFIER: TRANSFORMER OIL #1317

*Line Material 100 KVA
Ser.# 1162334 50 Gal*

PARAMETER	UNIT OF MEASURE	RESULT	DETECT LIMIT	METHOD
AROCLOR 1016	ug/g	BDL	1.0	EPA
AROCLOR 1221	ug/g	BDL	1.0	EPA
AROCLOR 1232	ug/g	BDL	1.0	EPA
AROCLOR 1242	ug/g	BDL	1.0	EPA
AROCLOR 1248	ug/g	BDL	1.0	EPA
AROCLOR 1254	ug/g	BDL	1.0	EPA
AROCLOR 1260	ug/g	BDL	1.0	EPA
TOTAL AROCLORS	ug/g	BDL	1.0	EPA

SAMPLE NUMBER: 0853202-035
IDENTIFIER: TRANSFORMER OIL #1318

*Wagner 25 KVA 25 Gal
Ser.# F961480*

PARAMETER	UNIT OF MEASURE	RESULT	DETECT LIMIT	METHOD
AROCLOR 1016	ug/g	BDL	1.0	EPA
AROCLOR 1221	ug/g	BDL	1.0	EPA
AROCLOR 1232	ug/g	BDL	1.0	EPA
AROCLOR 1242	ug/g	BDL	1.0	EPA
AROCLOR 1248	ug/g	BDL	1.0	EPA
AROCLOR 1254	ug/g	BDL	1.0	EPA
AROCLOR 1260	ug/g	20	1.0	EPA
TOTAL AROCLORS	ug/g	20	1.0	EPA

267# C15514
CE JKVA 50691

267# 1105334
Fire Motor, 100 KVA

267# F JE 1480
Motor, 52 KVA 52691

DATE 4/24/85
GLI# 0853202

PAGE 13

SAMPLE NUMBER: 0853202-036
IDENTIFIER: TRANSFORMER OIL #1319

*GE 15KVA 56 gal.
Ser. # E125 204-60Y*

PARAMETER	UNIT OF MEASURE	RESULT	DETECT LIMIT	METHOD
AROCLOR 1016	ug/g	BDL	1.0	EPA
AROCLOR 1221	ug/g	BDL	1.0	EPA
AROCLOR 1232	ug/g	BDL	1.0	EPA
AROCLOR 1242	ug/g	BDL	1.0	EPA
AROCLOR 1248	ug/g	BDL	1.0	EPA
AROCLOR 1254	ug/g	BDL	1.0	EPA
AROCLOR 1260	ug/g	2.6	1.0	EPA
TOTAL AROCLORS	ug/g	2.6	1.0	EPA

SAMPLE NUMBER: 0853202-037
IDENTIFIER: TRANSFORMER OIL #1320

*Westinghouse 10KVA 56 gal.
Ser. # 165AD1336*

PARAMETER	UNIT OF MEASURE	RESULT	DETECT LIMIT	METHOD
AROCLOR 1016	ug/g	BDL	1.0	EPA
AROCLOR 1221	ug/g	BDL	1.0	EPA
AROCLOR 1232	ug/g	BDL	1.0	EPA
AROCLOR 1242	ug/g	BDL	1.0	EPA
AROCLOR 1248	ug/g	BDL	1.0	EPA
AROCLOR 1254	ug/g	BDL	1.0	EPA
AROCLOR 1260	ug/g	4.4	1.0	EPA
TOTAL AROCLORS	ug/g	4.4	1.0	EPA

SAMPLE NUMBER: 0853202-038
IDENTIFIER: TRANSFORMER OIL #1321

*Allis-Chalmers 50 KVA 40 Gal.
Ser. # 1810179*

PARAMETER	UNIT OF MEASURE	RESULT	DETECT LIMIT	METHOD
AROCLOR 1016	ug/g	BDL	1.0	EPA
AROCLOR 1221	ug/g	BDL	1.0	EPA
AROCLOR 1232	ug/g	BDL	1.0	EPA
AROCLOR 1242	ug/g	BDL	1.0	EPA
AROCLOR 1248	ug/g	BDL	1.0	EPA
AROCLOR 1254	ug/g	BDL	1.0	EPA
AROCLOR 1260	ug/g	11	1.0	EPA
TOTAL AROCLORS	ug/g	11	1.0	EPA

2647# E/52.504-004
GE 12KVA 2 P91

2647# P2AD13P
Westinghouse 10KVA 2 P91

2647# 01JAH10
Allis-Crosby 20KVA 1H001

DATE 4/24/85
GLI# 0853202

PAGE 14

SAMPLE NUMBER: 0853202-039
IDENTIFIER: TRANSFORMER OIL #1322

GE 75 KVA 40 Gal.
Ser. # C127301

PARAMETER	UNIT OF MEASURE	RESULT	DETECT LIMIT	METHOD
AROCLOR 1016	ug/g	BDL	1.0	EPA
AROCLOR 1221	ug/g	BDL	1.0	EPA
AROCLOR 1232	ug/g	BDL	1.0	EPA
AROCLOR 1242	ug/g	BDL	1.0	EPA
AROCLOR 1248	ug/g	BDL	1.0	EPA
AROCLOR 1254	ug/g	BDL	1.0	EPA
AROCLOR 1260	ug/g	52	1.0	EPA
TOTAL AROCLORS	ug/g	(52)	1.0	EPA

SAMPLE NUMBER: 0853202-040
IDENTIFIER: TRANSFORMER OIL #1324

GE 25 KVA 20 Gal.
Ser. # D645594-58Y

PARAMETER	UNIT OF MEASURE	RESULT	DETECT LIMIT	METHOD
AROCLOR 1016	ug/g	BDL	1.0	EPA
AROCLOR 1221	ug/g	BDL	1.0	EPA
AROCLOR 1232	ug/g	BDL	1.0	EPA
AROCLOR 1242	ug/g	BDL	1.0	EPA
AROCLOR 1248	ug/g	BDL	1.0	EPA
AROCLOR 1254	ug/g	BDL	1.0	EPA
AROCLOR 1260	ug/g	2.0	1.0	EPA
TOTAL AROCLORS	ug/g	2.0	1.0	EPA

SAMPLE NUMBER: 0853202-041
IDENTIFIER: TRANSFORMER OIL #1325

Allis-Chalmers 50KVA
Ser. # 3476930 20 Gal.

PARAMETER	UNIT OF MEASURE	RESULT	DETECT LIMIT	METHOD
AROCLOR 1016	ug/g	BDL	1.0	EPA
AROCLOR 1221	ug/g	BDL	1.0	EPA
AROCLOR 1232	ug/g	BDL	1.0	EPA
AROCLOR 1242	ug/g	BDL	1.0	EPA
AROCLOR 1248	ug/g	BDL	1.0	EPA
AROCLOR 1254	ug/g	BDL	1.0	EPA
AROCLOR 1260	ug/g	6.8	1.0	EPA
TOTAL AROCLORS	ug/g	6.8	1.0	EPA

2nd # 6152201
GE JKAV 40691

2nd # 6152201
GE JKAV 40691

2nd # 6152201
GE JKAV 40691

DATE 4/24/85
GLI# 0853202

PAGE 15

SAMPLE NUMBER: 0853202-042
IDENTIFIER: TRANSFORMER OIL #1326

*Westinghouse 5KVA 5Gal.
Ser. # 66 AB 2284*

PARAMETER	UNIT OF MEASURE	RESULT	DETECT LIMIT	METHOD
AROCLOR 1016	ug/g	BDL	1.0	EPA
AROCLOR 1221	ug/g	BDL	1.0	EPA
AROCLOR 1232	ug/g	BDL	1.0	EPA
AROCLOR 1242	ug/g	BDL	1.0	EPA
AROCLOR 1248	ug/g	BDL	1.0	EPA
AROCLOR 1254	ug/g	BDL	1.0	EPA
AROCLOR 1260	ug/g	1.7	1.0	EPA
TOTAL AROCLORS	ug/g	1.7	1.0	EPA

SAMPLE NUMBER: 0853202-043
IDENTIFIER: TRANSFORMER OIL #1328

*Westinghouse 50KVA 25Gal.
Ser. # 6155400*

PARAMETER	UNIT OF MEASURE	RESULT	DETECT LIMIT	METHOD
AROCLOR 1016	ug/g	BDL	1.0	EPA
AROCLOR 1221	ug/g	BDL	1.0	EPA
AROCLOR 1232	ug/g	BDL	1.0	EPA
AROCLOR 1242	ug/g	BDL	1.0	EPA
AROCLOR 1248	ug/g	BDL	1.0	EPA
AROCLOR 1254	ug/g	BDL	1.0	EPA
AROCLOR 1260	ug/g	3.4	1.0	EPA
TOTAL AROCLORS	ug/g	3.4	1.0	EPA

SAMPLE NUMBER: 0853202-044
IDENTIFIER: TRANSFORMER OIL #1329

*Allis-Chalmers 50KVA 40Gal.
Ser. # 1817713*

PARAMETER	UNIT OF MEASURE	RESULT	DETECT LIMIT	METHOD
AROCLOR 1016	ug/g	BDL	1.0	EPA
AROCLOR 1221	ug/g	BDL	1.0	EPA
AROCLOR 1232	ug/g	BDL	1.0	EPA
AROCLOR 1242	ug/g	BDL	1.0	EPA
AROCLOR 1248	ug/g	BDL	1.0	EPA
AROCLOR 1254	ug/g	BDL	1.0	EPA
AROCLOR 1260	ug/g	2.9	1.0	EPA
TOTAL AROCLORS	ug/g	2.9	1.0	EPA

267 # P 12 400
Westwood house - 20 KVA - 2000

267 # P 12 400
Westwood house - 20 KVA - 2000

267 # P 12 400
Westwood house - 20 KVA - 2000

DATE 4/24/85
GLI# 0853202

PAGE 16

SAMPLE NUMBER: 0853202-045
IDENTIFIER: TRANSFORMER OIL #1330

*Kuhlman 25 KVA 15 Gal.
Ser. # 150845*

PARAMETER	UNIT OF MEASURE	RESULT	DETECT LIMIT	METHOD
AROCLOR 1016	ug/g	BDL	1.0	EPA
AROCLOR 1221	ug/g	BDL	1.0	EPA
AROCLOR 1232	ug/g	BDL	1.0	EPA
AROCLOR 1242	ug/g	BDL	1.0	EPA
AROCLOR 1248	ug/g	BDL	1.0	EPA
AROCLOR 1254	ug/g	BDL	1.0	EPA
AROCLOR 1260	ug/g	BDL	1.0	EPA
TOTAL AROCLORS	ug/g	BDL	1.0	EPA

SAMPLE NUMBER: 0853202-046
IDENTIFIER: TRANSFORMER OIL #1331

*Allis-Chalmers 37.5 KVA 36 Gal.
Ser. # 1833648*

PARAMETER	UNIT OF MEASURE	RESULT	DETECT LIMIT	METHOD
AROCLOR 1016	ug/g	BDL	1.0	EPA
AROCLOR 1221	ug/g	BDL	1.0	EPA
AROCLOR 1232	ug/g	BDL	1.0	EPA
AROCLOR 1242	ug/g	BDL	1.0	EPA
AROCLOR 1248	ug/g	BDL	1.0	EPA
AROCLOR 1254	ug/g	BDL	1.0	EPA
AROCLOR 1260	ug/g	18	1.0	EPA
TOTAL AROCLORS	ug/g	18	1.0	EPA

SAMPLE NUMBER: 0853202-047
IDENTIFIER: TRANSFORMER OIL #1332

*GE 50 KVA 62 Gal.
Ser. # B-9010214*

PARAMETER	UNIT OF MEASURE	RESULT	DETECT LIMIT	METHOD
AROCLOR 1016	ug/g	BDL	1.0	EPA
AROCLOR 1221	ug/g	BDL	1.0	EPA
AROCLOR 1232	ug/g	BDL	1.0	EPA
AROCLOR 1242	ug/g	BDL	1.0	EPA
AROCLOR 1248	ug/g	BDL	1.0	EPA
AROCLOR 1254	ug/g	BDL	1.0	EPA
AROCLOR 1260	ug/g	120	1.0	EPA
TOTAL AROCLORS	ug/g	120	1.0	EPA

1951

Set # 12084E
KOH 1m 52 KVA 1751

Set # 18384H
Alle-Chalmer 3.2 KVA 380V

Set # B-10105H
GE 20KVA P5291

○

DATE 4/24/85
GLI# 0853202

PAGE 17

SAMPLE NUMBER: 0853202-048
IDENTIFIER: TRANSFORMER OIL #1333

GE 50KVA 62 Gal.
Ser. # B-901022

PARAMETER	UNIT OF MEASURE	RESULT	DETECT LIMIT	METHOD
AROCLOR 1016	ug/g	BDL	1.0	EPA
AROCLOR 1221	ug/g	BDL	1.0	EPA
AROCLOR 1232	ug/g	BDL	1.0	EPA
AROCLOR 1242	ug/g	BDL	1.0	EPA
AROCLOR 1248	ug/g	BDL	1.0	EPA
AROCLOR 1254	ug/g	BDL	1.0	EPA
AROCLOR 1260	ug/g	110	1.0	EPA
TOTAL AROCLORS	ug/g	110	1.0	EPA

SAMPLE NUMBER: 0853202-049
IDENTIFIER: TRANSFORMER OIL #1334

Westinghouse 50KVA 93 Gal.
Ser. # 60L10832

PARAMETER	UNIT OF MEASURE	RESULT	DETECT LIMIT	METHOD
AROCLOR 1016	ug/g	BDL	1.0	EPA
AROCLOR 1221	ug/g	BDL	1.0	EPA
AROCLOR 1232	ug/g	BDL	1.0	EPA
AROCLOR 1242	ug/g	BDL	1.0	EPA
AROCLOR 1248	ug/g	BDL	1.0	EPA
AROCLOR 1254	ug/g	4.3	1.0	EPA
AROCLOR 1260	ug/g	4.2	1.0	EPA
TOTAL AROCLORS	ug/g	8.5	1.0	EPA

BDL: BELOW DETECTION LIMIT

APPROVED BY

Edgar E. Folk II
LABORATORY SUPERVISOR

William Paul Rufford
GENERAL LABORATORY MANAGER

IF YOU HAVE ANY QUESTIONS, PLEASE CONTACT OUR CUSTOMER SERVICE REPRESENTATIVE, ANITA STUTTS.

254# B-101055
20KAT 10835

254# B-1010835
20KAT 10835

1327 (MISSING)

MARTIN

Tr.

ND
THH THH II

25 ppm
THH THH II

5-50 ppm
THH THH III

50-200 ppm
THH IIII

9 50-200 ppm

>200 ppm
III

3 >200 ppm

TRANSFORMERS

ND
THH THH 11 12 - NONE DETECTED

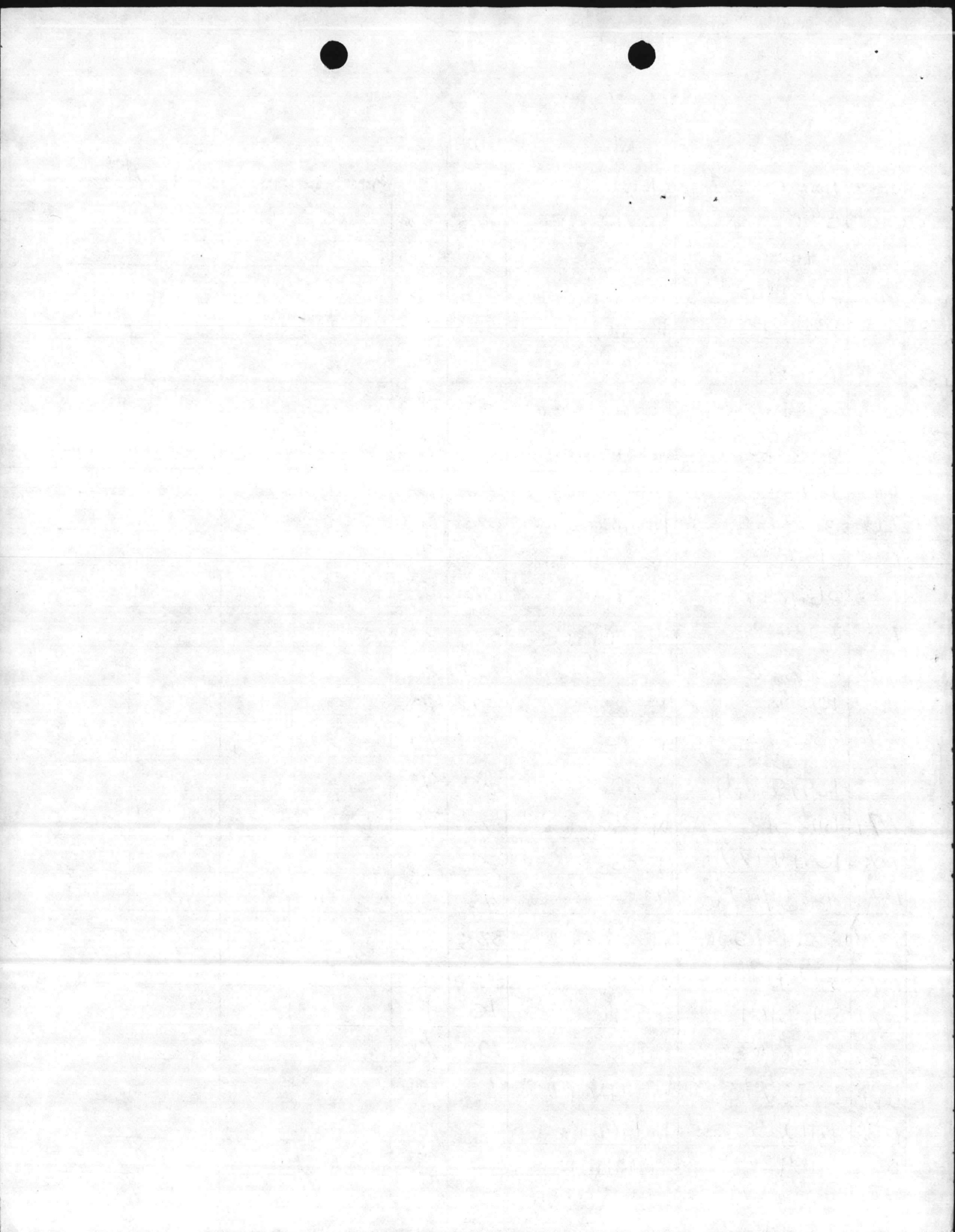
<5 ppm
THH THH 11 12 <5 ppm

5-50 ppm
THH THH 111 13 5-50 ppm

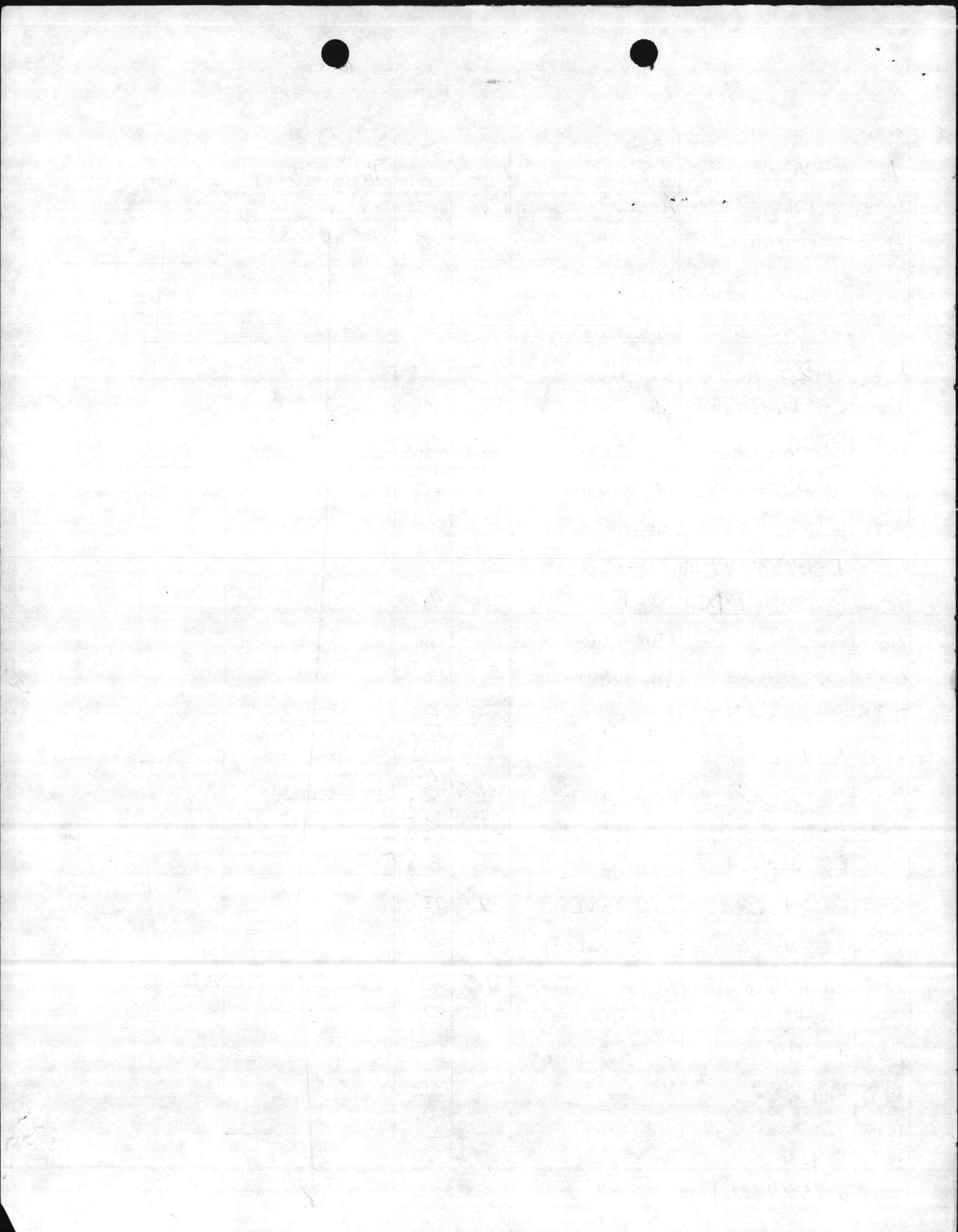
50-200 ppm
THH 1111 9 50-200 ppm

>200 ppm
111 3 >200 ppm

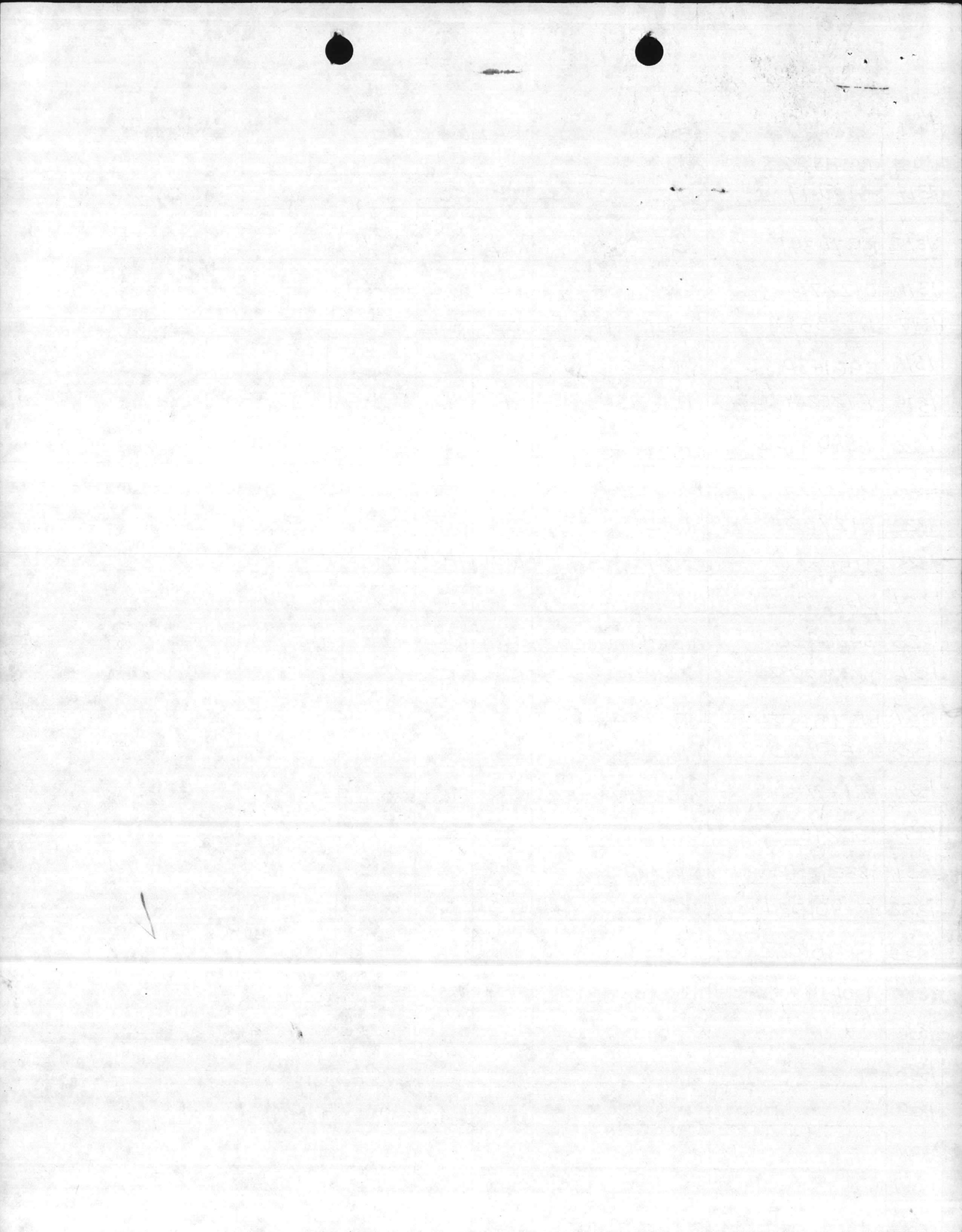
SAMPLE #	SERIAL #	BRAND	KVA	CAPACITY	SAMPLER	DATE
1257	NWL 17387	NWL			Piece + Betz	23 May 1983
1258	57J7200	WESTINGHOUSE	37.5	30		
1259	B54356	KUHLMAN	25	30		
1260	3102146	WESTINGHOUSE	25	25		
1261	73042930	WAGNER	37.5	30		
1262	A2412A50AA	WESTINGHOUSE	50	35		
1263	6075956	WESTINGHOUSE	25	20		
1264	3008488	WESTINGHOUSE	15	15		
1265	117341	STANDARD	37.5	25		
1266	3004559	WESTINGHOUSE	37.5	30		
1267	3132683	WESTINGHOUSE	37.5	30		
1268	8671241	GE	100	35		
1269	E5184203	LINE MATERIAL	37.5	20		
1270	E3821602	"	37.5	20		
1271	10919985	ESCO	50	45		
1272	8918424	ESCO	37.5	40		
1273	10919969	ESCO	25	40		
1274	6118312	WESTINGHOUSE	37.5	35		
1275	10919977	ESCO	25	30		
1276	6607476	GE	45	50		
1277	82A481006	WESTINGHOUSE	37.5	30		
1278	57J7196	WESTINGHOUSE	37.5	30		
1279	8486161	GE	10	10		
1280	8486165	GE	10	10		
1281	57J2715	WESTINGHOUSE	15	10		
1282	1811025	ALLIS CHALMERS	10	10		
1283	513924	STANDARD	5	5		
1284	6427542	WESTINGHOUSE	3	5		



SAMPLE #	SERIAL #	BRAND	KVA	CAPACITY	SAMPLER	DATE
1285	8486164	GE	10	5	PIERCE + BETZ	23 MAY 1984
1286	74106308974	ALLIS CHALMER	10	5		
1287	5200110	"	10	5		
1288	4667648468	GE	15	5		
1289	3533213	WESTINGHOUSE	3	5		
1290	314 ² 2056	WESTINGHOUSE	1.5	5		
1291	55J16756	WESTINGHOUSE	25	25		
1292	B546992	GE	25	25		
1293	T500524	DELTA-STAR	25	25		
1294	57J6035	WESTINGHOUSE	25	25		
1295	L367037Y14AA	GE	75	40		
1296	L828467YDA	GE	75	40		
1297	1268424	LINE MATERIAL	15	10		
1298	3532454	WESTINGHOUSE	5	5		
1299	54035-C	EISLER ENGINEERING	37.5	42		
1300	8671240	GE	100	40		
1301	6344/2	EISLER ENGINEERING	37.5	30 42		
1302	4811364	WESTINGHOUSE	25	25		
1303	D303901 D305210 158P	GE	5	30		
1304	E5184204	LINE MATERIAL	37.5	15		
1305	55E4876	WESTINGHOUSE	37.5	20		
1306	55E4786	WESTINGHOUSE	37.5	20		
1307	55E4760	WESTINGHOUSE	37.5	20		
1308	1789913	ALLIS CHALMER	75	83		
1309	3440362	"	75	30		
1310	D97856859Y	GE	37.5	40		
1311	F5H1833	WAGNER	37.5	30		
1312	D97573359Y	GE	37.5	30		



SAMPLE #	SERIAL #	BRAND	KVA	CAPACITY	SAMPLER	DATE
1313	F5H1828	WAGNER	37.5	34	PIERCE + BRETZ	23 MAY 1984
1314	C119617	GE	75	50	✓	2.0 71
1315	B974341	GE	100	50	✓	99
1316	C12274	GE	75	50	✓	52
1317	1162334	LINE MATERIAL	100	50		BDL
1318	E961480	WAGNER	25	25		20
1319	E125204-60Y	GE	15	5		2.6
1320	65AD 1336	WESTINGHOUSE	10	5		4.4
1321	1810179	ALLIS-CHALMERS	50	40		11
1322	C127301	GE	75	40	✓	52
1323	1156224	LINE MATERIAL	50	40	EMPTY	
1324	D145594-58Y	GE	25	20		2.0
1325	3476930	ALLIS-CHALMER	50	20		6.8
1326	160AB2284	WESTINGHOUSE	5	5		1.7
1327	161I1360Z	WESTINGHOUSE	15	10		BROKEN IN SHIPMENT
1328	6155400	WESTINGHOUSE	50	25		3.4
1329	1817713	ALLIS-CHALMER	50	40		2.9
1330	150845	KUHLMAN	25	15		BDL
1331	1833648	ALLIS-CHALMER	37.5	30		18
1332	B-901024	GE	50	62	✓	120
1333	B-901022	GE	50	102	✓	110
1334	60L1083Z	WESTINGHOUSE	50	93	✓	8.5
1335						
1336						
1337					RESULTS FILED: 1985	
1338						
1339						
1340						



5200
NREAD

28 Mar 1985

Director, Natural Resources and Environmental Affairs Division
Traffic Management Officer, Marine Corps Base

TRANSPORTATION OF LABORATORY SAMPLES; REQUEST FOR

1. Request shipment of 49 laboratory samples of transformer oil to Grainger Laboratories, Inc., 5500 Commercial Avenue, Raleigh, North Carolina 27612 (Attn: Kip Prichard), telephone (919-787-3061.)

J. I. WOOTEN

Blind copy to:
→ SupvChem

Writer: E. Betz, NREAD 5977
Typist: J. Cross 28Mar85

1001-1002

Director, Federal Bureau of Investigation
Washington, D.C.

TRANSPORTATION OF LABORERS

I have an employee of the Laboratory of the Federal Bureau of Investigation
at the Federal Bureau of Investigation, Washington, D.C. (Telephone 452-3000)

W. I. WOOD

1001-1002
←

1001-1002
1001-1002

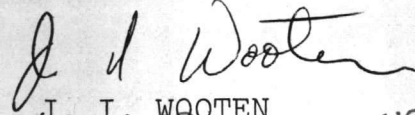


Memorandum

5200
NREAD

DATE: 28 Mar 1985
FROM: Director, Natural Resources and Environmental Affairs Division
TO: Traffic Management Officer, Marine Corps Base
SUBJ: TRANSPORTATION OF LABORATORY SAMPLES; REQUEST FOR

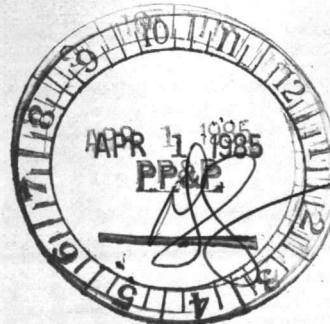
1. Request shipment of 49 laboratory samples of transformer oil to Grainger Laboratories, Inc., 5500 Commercial Avenue, Raleigh, North Carolina 27612 (Attn: Kip Prichard), telephone (919-787-3061.)



J. I. WOOTEN

SHIPMENT RECORD
FURTHER REFERENCE TO THIS SHIPMENT MUST QUOTE
THE TRANSPORTATION CONTROL NUMBER (TCN) WHICH
IS:

~~DPN~~ TCN: M31000 5091 0115 XXX



11

RECEIVED
MAY 10 1988

RECEIVED
MAY 10 1988





Grainger Laboratories Incorporated

Analytical and Consulting Chemists

DATE 4/24/85
GLI# 0853202

PAGE 1

Quality Control Lab, USMGB
Att: Elizabeth Betz, Supvsr
NREAD, Building 1103
Camp Lejeune, NC 28542

SUBJECT: ANALYSIS OF SAMPLES RECEIVED 4/03/85.

REFERENCE: PO NUMBER M67001-85-M-0610

RESULTS

SAMPLE NUMBER: 0853202-001
IDENTIFIER: TRANSFORMER OIL #1284

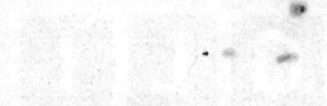
PARAMETER	UNIT OF MEASURE	RESULT	DETECT LIMIT	METHOD
AROCLOR 1016	ug/g	BDL	1.0	EPA
AROCLOR 1221	ug/g	BDL	1.0	EPA
AROCLOR 1232	ug/g	BDL	1.0	EPA
AROCLOR 1242	ug/g	BDL	1.0	EPA
AROCLOR 1248	ug/g	BDL	1.0	EPA
AROCLOR 1254	ug/g	BDL	1.0	EPA
AROCLOR 1260	ug/g	2.8	1.0	EPA
TOTAL AROCLORS	ug/g	2.8	1.0	EPA

SAMPLE NUMBER: 0853202-002
IDENTIFIER: TRANSFORMER OIL #1285

PARAMETER	UNIT OF MEASURE	RESULT	DETECT LIMIT	METHOD
AROCLOR 1016	ug/g	BDL	1.0	EPA
AROCLOR 1221	ug/g	BDL	1.0	EPA
AROCLOR 1232	ug/g	BDL	1.0	EPA
AROCLOR 1242	ug/g	BDL	1.0	EPA
AROCLOR 1248	ug/g	BDL	1.0	EPA
AROCLOR 1254	ug/g	BDL	1.0	EPA
AROCLOR 1260	ug/g	96	1.0	EPA
TOTAL AROCLORS	ug/g	96	1.0	EPA

3280 COLON BEEB

REC-100



1950
MAY 10 1950

RECEIVED
MAY 10 1950

1950

1950

1950

1950

1950

DATE 4/24/85
GLI# 0853202

PAGE 2

SAMPLE NUMBER: 0853202-003
IDENTIFIER: TRANSFORMER OIL #1286

PARAMETER	UNIT OF MEASURE	RESULT	DETECT LIMIT	METHOD
AROCLOR 1016	ug/g	BDL	1.0	EPA
AROCLOR 1221	ug/g	BDL	1.0	EPA
AROCLOR 1232	ug/g	BDL	1.0	EPA
AROCLOR 1242	ug/g	BDL	1.0	EPA
AROCLOR 1248	ug/g	BDL	1.0	EPA
AROCLOR 1254	ug/g	BDL	1.0	EPA
AROCLOR 1260	ug/g	1.4	1.0	EPA
TOTAL AROCLORS	ug/g	1.4	1.0	EPA

SAMPLE NUMBER: 0853202-004
IDENTIFIER: TRANSFORMER OIL #1287

PARAMETER	UNIT OF MEASURE	RESULT	DETECT LIMIT	METHOD
AROCLOR 1016	ug/g	BDL	1.0	EPA
AROCLOR 1221	ug/g	BDL	1.0	EPA
AROCLOR 1232	ug/g	BDL	1.0	EPA
AROCLOR 1242	ug/g	BDL	1.0	EPA
AROCLOR 1248	ug/g	BDL	1.0	EPA
AROCLOR 1254	ug/g	BDL	1.0	EPA
AROCLOR 1260	ug/g	BDL	1.0	EPA
TOTAL AROCLORS	ug/g	BDL	1.0	EPA

SAMPLE NUMBER: 0853202-005
IDENTIFIER: TRANSFORMER OIL #1288

PARAMETER	UNIT OF MEASURE	RESULT	DETECT LIMIT	METHOD
AROCLOR 1016	ug/g	BDL	1.0	EPA
AROCLOR 1221	ug/g	BDL	1.0	EPA
AROCLOR 1232	ug/g	BDL	1.0	EPA
AROCLOR 1242	ug/g	BDL	1.0	EPA
AROCLOR 1248	ug/g	BDL	1.0	EPA
AROCLOR 1254	ug/g	BDL	1.0	EPA
AROCLOR 1260	ug/g	BDL	1.0	EPA
TOTAL AROCLORS	ug/g	BDL	1.0	EPA

NON

1111

1954-1955

1954-1955

1954-1955

1954-1955

1954-1955

DATE 4/24/85
GLI# 0853202

PAGE 3

SAMPLE NUMBER: 0853202-006
IDENTIFIER: TRANSFORMER OIL #1289

PARAMETER	UNIT OF MEASURE	RESULT	DETECT LIMIT	METHOD
AROCLOR 1016	ug/g	BDL	1.0	EPA
AROCLOR 1221	ug/g	BDL	1.0	EPA
AROCLOR 1232	ug/g	BDL	1.0	EPA
AROCLOR 1242	ug/g	BDL	1.0	EPA
AROCLOR 1248	ug/g	BDL	1.0	EPA
AROCLOR 1254	ug/g	BDL	1.0	EPA
AROCLOR 1260	ug/g	17	1.0	EPA
TOTAL AROCLORS	ug/g	17	1.0	EPA

SAMPLE NUMBER: 0853202-007
IDENTIFIER: TRANSFORMER OIL #1290

PARAMETER	UNIT OF MEASURE	RESULT	DETECT LIMIT	METHOD
AROCLOR 1016	ug/g	BDL	1.0	EPA
AROCLOR 1221	ug/g	BDL	1.0	EPA
AROCLOR 1232	ug/g	BDL	1.0	EPA
AROCLOR 1242	ug/g	BDL	1.0	EPA
AROCLOR 1248	ug/g	BDL	1.0	EPA
AROCLOR 1254	ug/g	BDL	1.0	EPA
AROCLOR 1260	ug/g	6.3	1.0	EPA
TOTAL AROCLORS	ug/g	6.3	1.0	EPA

SAMPLE NUMBER: 0853202-008
IDENTIFIER: TRANSFORMER OIL #1291

PARAMETER	UNIT OF MEASURE	RESULT	DETECT LIMIT	METHOD
AROCLOR 1016	ug/g	BDL	1.0	EPA
AROCLOR 1221	ug/g	BDL	1.0	EPA
AROCLOR 1232	ug/g	BDL	1.0	EPA
AROCLOR 1242	ug/g	BDL	1.0	EPA
AROCLOR 1248	ug/g	BDL	1.0	EPA
AROCLOR 1254	ug/g	BDL	1.0	EPA
AROCLOR 1260	ug/g	340	1.0	EPA
TOTAL AROCLORS	ug/g	340	1.0	EPA

DATE: 10/10/1954

10/10/54

SPY COLON LINE

10/10/54

10/10/54

10/10/54

10/10/54

10/10/54

10/10/54

SPY COLON LINE

10/10/54

DATE 4/24/85
GLI# 0853202

PAGE 4

SAMPLE NUMBER: 0853202-009
IDENTIFIER: TRANSFORMER OIL #1292

PARAMETER	UNIT OF MEASURE	RESULT	DETECT LIMIT	METHOD
AROCLOR 1016	ug/g	BDL	1.0	EPA
AROCLOR 1221	ug/g	BDL	1.0	EPA
AROCLOR 1232	ug/g	BDL	1.0	EPA
AROCLOR 1242	ug/g	BDL	1.0	EPA
AROCLOR 1248	ug/g	BDL	1.0	EPA
AROCLOR 1254	ug/g	BDL	1.0	EPA
AROCLOR 1260	ug/g	99	1.0	EPA
TOTAL AROCLORS	ug/g	99	1.0	EPA

SAMPLE NUMBER: 0853202-010
IDENTIFIER: TRANSFORMER OIL #1293

PARAMETER	UNIT OF MEASURE	RESULT	DETECT LIMIT	METHOD
AROCLOR 1016	ug/g	BDL	1.0	EPA
AROCLOR 1221	ug/g	BDL	1.0	EPA
AROCLOR 1232	ug/g	BDL	1.0	EPA
AROCLOR 1242	ug/g	BDL	1.0	EPA
AROCLOR 1248	ug/g	BDL	1.0	EPA
AROCLOR 1254	ug/g	BDL	1.0	EPA
AROCLOR 1260	ug/g	BDL	1.0	EPA
TOTAL AROCLORS	ug/g	BDL	1.0	EPA

SAMPLE NUMBER: 0853202-011
IDENTIFIER: TRANSFORMER OIL #1294

PARAMETER	UNIT OF MEASURE	RESULT	DETECT LIMIT	METHOD
AROCLOR 1016	ug/g	BDL	1.0	EPA
AROCLOR 1221	ug/g	BDL	1.0	EPA
AROCLOR 1232	ug/g	BDL	1.0	EPA
AROCLOR 1242	ug/g	BDL	1.0	EPA
AROCLOR 1248	ug/g	BDL	1.0	EPA
AROCLOR 1254	ug/g	BDL	1.0	EPA
AROCLOR 1260	ug/g	310	1.0	EPA
TOTAL AROCLORS	ug/g	310	1.0	EPA

CONFIDENTIAL

MEMORANDUM FOR THE DIRECTOR, FBI

RE: [Illegible]

1. [Illegible]

2. [Illegible]

3. [Illegible]

4. [Illegible]



Grainger Laboratories Incorporated

Analytical and Consulting Chemists

DATE 4/24/85
GLI# 0853202

PAGE 5

SAMPLE NUMBER: 0853202-012
IDENTIFIER: TRANSFORMER OIL #1295

PARAMETER	UNIT OF MEASURE	RESULT	DETECT LIMIT	METHOD
AROCLOR 1016	ug/g	BDL	1.0	EPA
AROCLOR 1221	ug/g	BDL	1.0	EPA
AROCLOR 1232	ug/g	BDL	1.0	EPA
AROCLOR 1242	ug/g	BDL	1.0	EPA
AROCLOR 1248	ug/g	BDL	1.0	EPA
AROCLOR 1254	ug/g	BDL	1.0	EPA
AROCLOR 1260	ug/g	2.2	1.0	EPA
TOTAL AROCLORS	ug/g	2.2	1.0	EPA

SAMPLE NUMBER: 0853202-013
IDENTIFIER: TRANSFORMER OIL #1296

PARAMETER	UNIT OF MEASURE	RESULT	DETECT LIMIT	METHOD
AROCLOR 1016	ug/g	BDL	1.0	EPA
AROCLOR 1221	ug/g	BDL	1.0	EPA
AROCLOR 1232	ug/g	BDL	1.0	EPA
AROCLOR 1242	ug/g	BDL	1.0	EPA
AROCLOR 1248	ug/g	BDL	1.0	EPA
AROCLOR 1254	ug/g	BDL	1.0	EPA
AROCLOR 1260	ug/g	BDL	1.0	EPA
TOTAL AROCLORS	ug/g	BDL	1.0	EPA

SAMPLE NUMBER: 0853202-014
IDENTIFIER: TRANSFORMER OIL #1297

PARAMETER	UNIT OF MEASURE	RESULT	DETECT LIMIT	METHOD
AROCLOR 1016	ug/g	BDL	1.0	EPA
AROCLOR 1221	ug/g	BDL	1.0	EPA
AROCLOR 1232	ug/g	BDL	1.0	EPA
AROCLOR 1242	ug/g	BDL	1.0	EPA
AROCLOR 1248	ug/g	BDL	1.0	EPA
AROCLOR 1254	ug/g	BDL	1.0	EPA
AROCLOR 1260	ug/g	BDL	1.0	EPA
TOTAL AROCLORS	ug/g	BDL	1.0	EPA

1950

1950

1950

1950

1950

1950

1950

DATE 4/24/85
GLI# 0853202

PAGE 6

SAMPLE NUMBER: 0853202-015
IDENTIFIER: TRANSFORMER OIL #1298

PARAMETER	UNIT OF MEASURE	RESULT	DETECT LIMIT	METHOD
AROCLOR 1016	ug/g	BDL	1.0	EPA
AROCLOR 1221	ug/g	BDL	1.0	EPA
AROCLOR 1232	ug/g	BDL	1.0	EPA
AROCLOR 1242	ug/g	BDL	1.0	EPA
AROCLOR 1248	ug/g	BDL	1.0	EPA
AROCLOR 1254	ug/g	BDL	1.0	EPA
AROCLOR 1260	ug/g	6.2	1.0	EPA
TOTAL AROCLORS	ug/g	6.2	1.0	EPA

SAMPLE NUMBER: 0853202-016
IDENTIFIER: TRANSFORMER OIL #1299

PARAMETER	UNIT OF MEASURE	RESULT	DETECT LIMIT	METHOD
AROCLOR 1016	ug/g	BDL	1.0	EPA
AROCLOR 1221	ug/g	BDL	1.0	EPA
AROCLOR 1232	ug/g	BDL	1.0	EPA
AROCLOR 1242	ug/g	BDL	1.0	EPA
AROCLOR 1248	ug/g	BDL	1.0	EPA
AROCLOR 1254	ug/g	BDL	1.0	EPA
AROCLOR 1260	ug/g	BDL	1.0	EPA
TOTAL AROCLORS	ug/g	BDL	1.0	EPA

SAMPLE NUMBER: 0853202-017
IDENTIFIER: TRANSFORMER OIL #1300

PARAMETER	UNIT OF MEASURE	RESULT	DETECT LIMIT	METHOD
AROCLOR 1016	ug/g	BDL	1.0	EPA
AROCLOR 1221	ug/g	BDL	1.0	EPA
AROCLOR 1232	ug/g	BDL	1.0	EPA
AROCLOR 1242	ug/g	BDL	1.0	EPA
AROCLOR 1248	ug/g	BDL	1.0	EPA
AROCLOR 1254	ug/g	BDL	1.0	EPA
AROCLOR 1260	ug/g	220	1.0	EPA
TOTAL AROCLORS	ug/g	220	1.0	EPA

DATE 4/24/85
GLI# 0853202

PAGE 7

SAMPLE NUMBER: 0853202-018
IDENTIFIER: TRANSFORMER OIL #1301

PARAMETER	UNIT OF MEASURE	RESULT	DETECT LIMIT	METHOD
AROCLOR 1016	ug/g	BDL	1.0	EPA
AROCLOR 1221	ug/g	BDL	1.0	EPA
AROCLOR 1232	ug/g	BDL	1.0	EPA
AROCLOR 1242	ug/g	BDL	1.0	EPA
AROCLOR 1248	ug/g	BDL	1.0	EPA
AROCLOR 1254	ug/g	BDL	1.0	EPA
AROCLOR 1260	ug/g	BDL	1.0	EPA
TOTAL AROCLORS	ug/g	BDL	1.0	EPA

SAMPLE NUMBER: 0853202-019
IDENTIFIER: TRANSFORMER OIL #1302

PARAMETER	UNIT OF MEASURE	RESULT	DETECT LIMIT	METHOD
AROCLOR 1016	ug/g	BDL	1.0	EPA
AROCLOR 1221	ug/g	BDL	1.0	EPA
AROCLOR 1232	ug/g	BDL	1.0	EPA
AROCLOR 1242	ug/g	BDL	1.0	EPA
AROCLOR 1248	ug/g	BDL	1.0	EPA
AROCLOR 1254	ug/g	BDL	1.0	EPA
AROCLOR 1260	ug/g	BDL	1.0	EPA
TOTAL AROCLORS	ug/g	BDL	1.0	EPA

SAMPLE NUMBER: 0853202-020
IDENTIFIER: TRANSFORMER OIL #1303

PARAMETER	UNIT OF MEASURE	RESULT	DETECT LIMIT	METHOD
AROCLOR 1016	ug/g	BDL	1.0	EPA
AROCLOR 1221	ug/g	BDL	1.0	EPA
AROCLOR 1232	ug/g	BDL	1.0	EPA
AROCLOR 1242	ug/g	BDL	1.0	EPA
AROCLOR 1248	ug/g	BDL	1.0	EPA
AROCLOR 1254	ug/g	BDL	1.0	EPA
AROCLOR 1260	ug/g	130	1.0	EPA
TOTAL AROCLORS	ug/g	130	1.0	EPA

SECRET

SECRET

SECRET

SECRET

SECRET

SECRET

DATE 4/24/85
GLI# 0853202

PAGE 8

SAMPLE NUMBER: 0853202-021
IDENTIFIER: TRANSFORMER OIL #1304

PARAMETER	UNIT OF MEASURE	RESULT	DETECT LIMIT	METHOD
AROCLOR 1016	ug/g	BDL	1.0	EPA
AROCLOR 1221	ug/g	BDL	1.0	EPA
AROCLOR 1232	ug/g	BDL	1.0	EPA
AROCLOR 1242	ug/g	BDL	1.0	EPA
AROCLOR 1248	ug/g	BDL	1.0	EPA
AROCLOR 1254	ug/g	BDL	1.0	EPA
AROCLOR 1260	ug/g	10	1.0	EPA
TOTAL AROCLORS	ug/g	10	1.0	EPA

SAMPLE NUMBER: 0853202-022
IDENTIFIER: TRANSFORMER OIL #1305

PARAMETER	UNIT OF MEASURE	RESULT	DETECT LIMIT	METHOD
AROCLOR 1016	ug/g	BDL	1.0	EPA
AROCLOR 1221	ug/g	BDL	1.0	EPA
AROCLOR 1232	ug/g	BDL	1.0	EPA
AROCLOR 1242	ug/g	BDL	1.0	EPA
AROCLOR 1248	ug/g	BDL	1.0	EPA
AROCLOR 1254	ug/g	BDL	1.0	EPA
AROCLOR 1260	ug/g	5.5	1.0	EPA
TOTAL AROCLORS	ug/g	5.5	1.0	EPA

SAMPLE NUMBER: 0853202-023
IDENTIFIER: TRANSFORMER OIL #1306

PARAMETER	UNIT OF MEASURE	RESULT	DETECT LIMIT	METHOD
AROCLOR 1016	ug/g	BDL	1.0	EPA
AROCLOR 1221	ug/g	BDL	1.0	EPA
AROCLOR 1232	ug/g	BDL	1.0	EPA
AROCLOR 1242	ug/g	BDL	1.0	EPA
AROCLOR 1248	ug/g	BDL	1.0	EPA
AROCLOR 1254	ug/g	BDL	1.0	EPA
AROCLOR 1260	ug/g	5.2	1.0	EPA
TOTAL AROCLORS	ug/g	5.2	1.0	EPA



Grainger Laboratories Incorporated

Analytical and Consulting Chemists

DATE 4/24/85
GLI# 0853202

PAGE 9

SAMPLE NUMBER: 0853202-024
IDENTIFIER: TRANSFORMER OIL #1307

PARAMETER	UNIT OF MEASURE	RESULT	DETECT LIMIT	METHOD
AROCLOR 1016	ug/g	BDL	1.0	EPA
AROCLOR 1221	ug/g	BDL	1.0	EPA
AROCLOR 1232	ug/g	BDL	1.0	EPA
AROCLOR 1242	ug/g	BDL	1.0	EPA
AROCLOR 1248	ug/g	BDL	1.0	EPA
AROCLOR 1254	ug/g	BDL	1.0	EPA
AROCLOR 1260	ug/g	5.3	1.0	EPA
TOTAL AROCLORS	ug/g	5.3	1.0	EPA

SAMPLE NUMBER: 0853202-025
IDENTIFIER: TRANSFORMER OIL #1308

PARAMETER	UNIT OF MEASURE	RESULT	DETECT LIMIT	METHOD
AROCLOR 1016	ug/g	BDL	1.0	EPA
AROCLOR 1221	ug/g	BDL	1.0	EPA
AROCLOR 1232	ug/g	BDL	1.0	EPA
AROCLOR 1242	ug/g	BDL	1.0	EPA
AROCLOR 1248	ug/g	BDL	1.0	EPA
AROCLOR 1254	ug/g	BDL	1.0	EPA
AROCLOR 1260	ug/g	3.8	1.0	EPA
TOTAL AROCLORS	ug/g	3.8	1.0	EPA

SAMPLE NUMBER: 0853202-026
IDENTIFIER: TRANSFORMER OIL #1309

PARAMETER	UNIT OF MEASURE	RESULT	DETECT LIMIT	METHOD
AROCLOR 1016	ug/g	BDL	1.0	EPA
AROCLOR 1221	ug/g	BDL	1.0	EPA
AROCLOR 1232	ug/g	BDL	1.0	EPA
AROCLOR 1242	ug/g	BDL	1.0	EPA
AROCLOR 1248	ug/g	BDL	1.0	EPA
AROCLOR 1254	ug/g	BDL	1.0	EPA
AROCLOR 1260	ug/g	6.7	1.0	EPA
TOTAL AROCLORS	ug/g	6.7	1.0	EPA



RECEIVED BY THE OFFICE OF THE ATTORNEY GENERAL

2 5 8

DATE	DESCRIPTION	AMOUNT	CHECK NO.
1-1-80	STATE OF TEXAS	100.00	100
1-15-80	STATE OF TEXAS	100.00	101
2-1-80	STATE OF TEXAS	100.00	102
2-15-80	STATE OF TEXAS	100.00	103
3-1-80	STATE OF TEXAS	100.00	104
3-15-80	STATE OF TEXAS	100.00	105
4-1-80	STATE OF TEXAS	100.00	106
4-15-80	STATE OF TEXAS	100.00	107
5-1-80	STATE OF TEXAS	100.00	108
5-15-80	STATE OF TEXAS	100.00	109
6-1-80	STATE OF TEXAS	100.00	110
6-15-80	STATE OF TEXAS	100.00	111
7-1-80	STATE OF TEXAS	100.00	112
7-15-80	STATE OF TEXAS	100.00	113
8-1-80	STATE OF TEXAS	100.00	114
8-15-80	STATE OF TEXAS	100.00	115
9-1-80	STATE OF TEXAS	100.00	116
9-15-80	STATE OF TEXAS	100.00	117
10-1-80	STATE OF TEXAS	100.00	118
10-15-80	STATE OF TEXAS	100.00	119
11-1-80	STATE OF TEXAS	100.00	120
11-15-80	STATE OF TEXAS	100.00	121
12-1-80	STATE OF TEXAS	100.00	122
12-15-80	STATE OF TEXAS	100.00	123
TOTAL		1200.00	

DATE	DESCRIPTION	AMOUNT	CHECK NO.
1-1-81	STATE OF TEXAS	100.00	124
1-15-81	STATE OF TEXAS	100.00	125
2-1-81	STATE OF TEXAS	100.00	126
2-15-81	STATE OF TEXAS	100.00	127
3-1-81	STATE OF TEXAS	100.00	128
3-15-81	STATE OF TEXAS	100.00	129
4-1-81	STATE OF TEXAS	100.00	130
4-15-81	STATE OF TEXAS	100.00	131
5-1-81	STATE OF TEXAS	100.00	132
5-15-81	STATE OF TEXAS	100.00	133
6-1-81	STATE OF TEXAS	100.00	134
6-15-81	STATE OF TEXAS	100.00	135
7-1-81	STATE OF TEXAS	100.00	136
7-15-81	STATE OF TEXAS	100.00	137
8-1-81	STATE OF TEXAS	100.00	138
8-15-81	STATE OF TEXAS	100.00	139
9-1-81	STATE OF TEXAS	100.00	140
9-15-81	STATE OF TEXAS	100.00	141
10-1-81	STATE OF TEXAS	100.00	142
10-15-81	STATE OF TEXAS	100.00	143
11-1-81	STATE OF TEXAS	100.00	144
11-15-81	STATE OF TEXAS	100.00	145
12-1-81	STATE OF TEXAS	100.00	146
12-15-81	STATE OF TEXAS	100.00	147
TOTAL		1200.00	

DATE	DESCRIPTION	AMOUNT	CHECK NO.
1-1-82	STATE OF TEXAS	100.00	148
1-15-82	STATE OF TEXAS	100.00	149
2-1-82	STATE OF TEXAS	100.00	150
2-15-82	STATE OF TEXAS	100.00	151
3-1-82	STATE OF TEXAS	100.00	152
3-15-82	STATE OF TEXAS	100.00	153
4-1-82	STATE OF TEXAS	100.00	154
4-15-82	STATE OF TEXAS	100.00	155
5-1-82	STATE OF TEXAS	100.00	156
5-15-82	STATE OF TEXAS	100.00	157
6-1-82	STATE OF TEXAS	100.00	158
6-15-82	STATE OF TEXAS	100.00	159
7-1-82	STATE OF TEXAS	100.00	160
7-15-82	STATE OF TEXAS	100.00	161
8-1-82	STATE OF TEXAS	100.00	162
8-15-82	STATE OF TEXAS	100.00	163
9-1-82	STATE OF TEXAS	100.00	164
9-15-82	STATE OF TEXAS	100.00	165
10-1-82	STATE OF TEXAS	100.00	166
10-15-82	STATE OF TEXAS	100.00	167
11-1-82	STATE OF TEXAS	100.00	168
11-15-82	STATE OF TEXAS	100.00	169
12-1-82	STATE OF TEXAS	100.00	170
12-15-82	STATE OF TEXAS	100.00	171
TOTAL		1200.00	

RECEIVED BY THE OFFICE OF THE ATTORNEY GENERAL

2 5 8

DATE 4/24/85
GLI# 0853202

PAGE 10

SAMPLE NUMBER: 0853202-027
IDENTIFIER: TRANSFORMER OIL #1310

PARAMETER	UNIT OF MEASURE	RESULT	DETECT LIMIT	METHOD
AROCLOR 1016	ug/g	BDL	1.0	EPA
AROCLOR 1221	ug/g	BDL	1.0	EPA
AROCLOR 1232	ug/g	BDL	1.0	EPA
AROCLOR 1242	ug/g	BDL	1.0	EPA
AROCLOR 1248	ug/g	BDL	1.0	EPA
AROCLOR 1254	ug/g	BDL	1.0	EPA
AROCLOR 1260	ug/g	BDL	1.0	EPA
TOTAL AROCLORS	ug/g	BDL	1.0	EPA

SAMPLE NUMBER: 0853202-028
IDENTIFIER: TRANSFORMER OIL #1311

PARAMETER	UNIT OF MEASURE	RESULT	DETECT LIMIT	METHOD
AROCLOR 1016	ug/g	BDL	1.0	EPA
AROCLOR 1221	ug/g	BDL	1.0	EPA
AROCLOR 1232	ug/g	BDL	1.0	EPA
AROCLOR 1242	ug/g	BDL	1.0	EPA
AROCLOR 1248	ug/g	BDL	1.0	EPA
AROCLOR 1254	ug/g	1.4	1.0	EPA
AROCLOR 1260	ug/g	BDL	1.0	EPA
TOTAL AROCLORS	ug/g	1.4	1.0	EPA

SAMPLE NUMBER: 0853202-029
IDENTIFIER: TRANSFORMER OIL #1312

PARAMETER	UNIT OF MEASURE	RESULT	DETECT LIMIT	METHOD
AROCLOR 1016	ug/g	BDL	1.0	EPA
AROCLOR 1221	ug/g	BDL	1.0	EPA
AROCLOR 1232	ug/g	BDL	1.0	EPA
AROCLOR 1242	ug/g	BDL	1.0	EPA
AROCLOR 1248	ug/g	BDL	1.0	EPA
AROCLOR 1254	ug/g	BDL	1.0	EPA
AROCLOR 1260	ug/g	BDL	1.0	EPA
TOTAL AROCLORS	ug/g	BDL	1.0	EPA

DATE 4/24/85
GLI# 0853202

PAGE 11

SAMPLE NUMBER: 0853202-030
IDENTIFIER: TRANSFORMER OIL #1313

PARAMETER	UNIT OF MEASURE	RESULT	DETECT LIMIT	METHOD
AROCLOR 1016	ug/g	BDL	1.0	EPA
AROCLOR 1221	ug/g	BDL	1.0	EPA
AROCLOR 1232	ug/g	BDL	1.0	EPA
AROCLOR 1242	ug/g	BDL	1.0	EPA
AROCLOR 1248	ug/g	BDL	1.0	EPA
AROCLOR 1254	ug/g	BDL	1.0	EPA
AROCLOR 1260	ug/g	2.0	1.0	EPA
TOTAL AROCLORS	ug/g	2.0	1.0	EPA

SAMPLE NUMBER: 0853202-031
IDENTIFIER: TRANSFORMER OIL #1314

PARAMETER	UNIT OF MEASURE	RESULT	DETECT LIMIT	METHOD
AROCLOR 1016	ug/g	BDL	1.0	EPA
AROCLOR 1221	ug/g	BDL	1.0	EPA
AROCLOR 1232	ug/g	BDL	1.0	EPA
AROCLOR 1242	ug/g	BDL	1.0	EPA
AROCLOR 1248	ug/g	BDL	1.0	EPA
AROCLOR 1254	ug/g	BDL	1.0	EPA
AROCLOR 1260	ug/g	71	1.0	EPA
TOTAL AROCLORS	ug/g	71	1.0	EPA

SAMPLE NUMBER: 0853202-032
IDENTIFIER: TRANSFORMER OIL #1315

PARAMETER	UNIT OF MEASURE	RESULT	DETECT LIMIT	METHOD
AROCLOR 1016	ug/g	BDL	1.0	EPA
AROCLOR 1221	ug/g	BDL	1.0	EPA
AROCLOR 1232	ug/g	BDL	1.0	EPA
AROCLOR 1242	ug/g	BDL	1.0	EPA
AROCLOR 1248	ug/g	BDL	1.0	EPA
AROCLOR 1254	ug/g	BDL	1.0	EPA
AROCLOR 1260	ug/g	99	1.0	EPA
TOTAL AROCLORS	ug/g	99	1.0	EPA

Blank header area with faint text.

Blank section with faint horizontal lines.

Section with faint text and a large, illegible graphic or stamp.

Section with faint text and a large, illegible graphic or stamp.

Section with faint text and a large, illegible graphic or stamp.

Blank footer area with faint text.



Grainger Laboratories Incorporated

Analytical and Consulting Chemists

DATE 4/24/85
GLI# 0853202

PAGE 12

SAMPLE NUMBER: 0853202-033
IDENTIFIER: TRANSFORMER OIL #1316

PARAMETER	UNIT OF MEASURE	RESULT	DETECT LIMIT	METHOD
AROCLOR 1016	ug/g	BDL	1.0	EPA
AROCLOR 1221	ug/g	BDL	1.0	EPA
AROCLOR 1232	ug/g	BDL	1.0	EPA
AROCLOR 1242	ug/g	BDL	1.0	EPA
AROCLOR 1248	ug/g	BDL	1.0	EPA
AROCLOR 1254	ug/g	BDL	1.0	EPA
AROCLOR 1260	ug/g	52	1.0	EPA
TOTAL AROCLORS	ug/g	52	1.0	EPA

SAMPLE NUMBER: 0853202-034
IDENTIFIER: TRANSFORMER OIL #1317

PARAMETER	UNIT OF MEASURE	RESULT	DETECT LIMIT	METHOD
AROCLOR 1016	ug/g	BDL	1.0	EPA
AROCLOR 1221	ug/g	BDL	1.0	EPA
AROCLOR 1232	ug/g	BDL	1.0	EPA
AROCLOR 1242	ug/g	BDL	1.0	EPA
AROCLOR 1248	ug/g	BDL	1.0	EPA
AROCLOR 1254	ug/g	BDL	1.0	EPA
AROCLOR 1260	ug/g	BDL	1.0	EPA
TOTAL AROCLORS	ug/g	BDL	1.0	EPA

SAMPLE NUMBER: 0853202-035
IDENTIFIER: TRANSFORMER OIL #1318

PARAMETER	UNIT OF MEASURE	RESULT	DETECT LIMIT	METHOD
AROCLOR 1016	ug/g	BDL	1.0	EPA
AROCLOR 1221	ug/g	BDL	1.0	EPA
AROCLOR 1232	ug/g	BDL	1.0	EPA
AROCLOR 1242	ug/g	BDL	1.0	EPA
AROCLOR 1248	ug/g	BDL	1.0	EPA
AROCLOR 1254	ug/g	BDL	1.0	EPA
AROCLOR 1260	ug/g	20	1.0	EPA
TOTAL AROCLORS	ug/g	20	1.0	EPA

CONFIDENTIAL

CONFIDENTIAL

CONFIDENTIAL

CONFIDENTIAL

CONFIDENTIAL

CONFIDENTIAL

CONFIDENTIAL

CONFIDENTIAL

DATE 4/24/85
GLI# 0853202

PAGE 13

SAMPLE NUMBER: 0853202-036
IDENTIFIER: TRANSFORMER OIL #1319

PARAMETER	UNIT OF MEASURE	RESULT	DETECT LIMIT	METHOD
AROCLOR 1016	ug/g	BDL	1.0	EPA
AROCLOR 1221	ug/g	BDL	1.0	EPA
AROCLOR 1232	ug/g	BDL	1.0	EPA
AROCLOR 1242	ug/g	BDL	1.0	EPA
AROCLOR 1248	ug/g	BDL	1.0	EPA
AROCLOR 1254	ug/g	BDL	1.0	EPA
AROCLOR 1260	ug/g	2.6	1.0	EPA
TOTAL AROCLORS	ug/g	2.6	1.0	EPA

SAMPLE NUMBER: 0853202-037
IDENTIFIER: TRANSFORMER OIL #1320

PARAMETER	UNIT OF MEASURE	RESULT	DETECT LIMIT	METHOD
AROCLOR 1016	ug/g	BDL	1.0	EPA
AROCLOR 1221	ug/g	BDL	1.0	EPA
AROCLOR 1232	ug/g	BDL	1.0	EPA
AROCLOR 1242	ug/g	BDL	1.0	EPA
AROCLOR 1248	ug/g	BDL	1.0	EPA
AROCLOR 1254	ug/g	BDL	1.0	EPA
AROCLOR 1260	ug/g	4.4	1.0	EPA
TOTAL AROCLORS	ug/g	4.4	1.0	EPA

SAMPLE NUMBER: 0853202-038
IDENTIFIER: TRANSFORMER OIL #1321

PARAMETER	UNIT OF MEASURE	RESULT	DETECT LIMIT	METHOD
AROCLOR 1016	ug/g	BDL	1.0	EPA
AROCLOR 1221	ug/g	BDL	1.0	EPA
AROCLOR 1232	ug/g	BDL	1.0	EPA
AROCLOR 1242	ug/g	BDL	1.0	EPA
AROCLOR 1248	ug/g	BDL	1.0	EPA
AROCLOR 1254	ug/g	BDL	1.0	EPA
AROCLOR 1260	ug/g	11	1.0	EPA
TOTAL AROCLORS	ug/g	11	1.0	EPA

DATE 4/24/85
GLI# 0853202

PAGE 14

SAMPLE NUMBER: 0853202-039
IDENTIFIER: TRANSFORMER OIL #1322

PARAMETER	UNIT OF MEASURE	RESULT	DETECT LIMIT	METHOD
AROCLOR 1016	ug/g	BDL	1.0	EPA
AROCLOR 1221	ug/g	BDL	1.0	EPA
AROCLOR 1232	ug/g	BDL	1.0	EPA
AROCLOR 1242	ug/g	BDL	1.0	EPA
AROCLOR 1248	ug/g	BDL	1.0	EPA
AROCLOR 1254	ug/g	BDL	1.0	EPA
AROCLOR 1260	ug/g	52	1.0	EPA
TOTAL AROCLORS	ug/g	52	1.0	EPA

SAMPLE NUMBER: 0853202-040
IDENTIFIER: TRANSFORMER OIL #1324

PARAMETER	UNIT OF MEASURE	RESULT	DETECT LIMIT	METHOD
AROCLOR 1016	ug/g	BDL	1.0	EPA
AROCLOR 1221	ug/g	BDL	1.0	EPA
AROCLOR 1232	ug/g	BDL	1.0	EPA
AROCLOR 1242	ug/g	BDL	1.0	EPA
AROCLOR 1248	ug/g	BDL	1.0	EPA
AROCLOR 1254	ug/g	BDL	1.0	EPA
AROCLOR 1260	ug/g	2.0	1.0	EPA
TOTAL AROCLORS	ug/g	2.0	1.0	EPA

SAMPLE NUMBER: 0853202-041
IDENTIFIER: TRANSFORMER OIL #1325

PARAMETER	UNIT OF MEASURE	RESULT	DETECT LIMIT	METHOD
AROCLOR 1016	ug/g	BDL	1.0	EPA
AROCLOR 1221	ug/g	BDL	1.0	EPA
AROCLOR 1232	ug/g	BDL	1.0	EPA
AROCLOR 1242	ug/g	BDL	1.0	EPA
AROCLOR 1248	ug/g	BDL	1.0	EPA
AROCLOR 1254	ug/g	BDL	1.0	EPA
AROCLOR 1260	ug/g	6.8	1.0	EPA
TOTAL AROCLORS	ug/g	6.8	1.0	EPA

DATE 4/24/85
GLI# 0853202

PAGE 15

SAMPLE NUMBER: 0853202-042
IDENTIFIER: TRANSFORMER OIL #1326

PARAMETER	UNIT OF MEASURE	RESULT	DETECT LIMIT	METHOD
AROCLOR 1016	ug/g	BDL	1.0	EPA
AROCLOR 1221	ug/g	BDL	1.0	EPA
AROCLOR 1232	ug/g	BDL	1.0	EPA
AROCLOR 1242	ug/g	BDL	1.0	EPA
AROCLOR 1248	ug/g	BDL	1.0	EPA
AROCLOR 1254	ug/g	BDL	1.0	EPA
AROCLOR 1260	ug/g	1.7	1.0	EPA
TOTAL AROCLORS	ug/g	1.7	1.0	EPA

SAMPLE NUMBER: 0853202-043
IDENTIFIER: TRANSFORMER OIL #1328

PARAMETER	UNIT OF MEASURE	RESULT	DETECT LIMIT	METHOD
AROCLOR 1016	ug/g	BDL	1.0	EPA
AROCLOR 1221	ug/g	BDL	1.0	EPA
AROCLOR 1232	ug/g	BDL	1.0	EPA
AROCLOR 1242	ug/g	BDL	1.0	EPA
AROCLOR 1248	ug/g	BDL	1.0	EPA
AROCLOR 1254	ug/g	BDL	1.0	EPA
AROCLOR 1260	ug/g	3.4	1.0	EPA
TOTAL AROCLORS	ug/g	3.4	1.0	EPA

SAMPLE NUMBER: 0853202-044
IDENTIFIER: TRANSFORMER OIL #1329

PARAMETER	UNIT OF MEASURE	RESULT	DETECT LIMIT	METHOD
AROCLOR 1016	ug/g	BDL	1.0	EPA
AROCLOR 1221	ug/g	BDL	1.0	EPA
AROCLOR 1232	ug/g	BDL	1.0	EPA
AROCLOR 1242	ug/g	BDL	1.0	EPA
AROCLOR 1248	ug/g	BDL	1.0	EPA
AROCLOR 1254	ug/g	BDL	1.0	EPA
AROCLOR 1260	ug/g	2.9	1.0	EPA
TOTAL AROCLORS	ug/g	2.9	1.0	EPA

DATE: 10/10/10
TIME: 10:10
BY: [Signature]

DESCRIPTION: [Faint text]
AMOUNT: [Faint text]
TOTAL: [Faint text]

DESCRIPTION: [Faint text]
AMOUNT: [Faint text]
TOTAL: [Faint text]

DESCRIPTION: [Faint text]
AMOUNT: [Faint text]
TOTAL: [Faint text]

DESCRIPTION: [Faint text]
AMOUNT: [Faint text]
TOTAL: [Faint text]

DATE 4/24/85
GLI# 0853202

PAGE 16

SAMPLE NUMBER: 0853202-045
IDENTIFIER: TRANSFORMER OIL #1330

PARAMETER	UNIT OF MEASURE	RESULT	DETECT LIMIT	METHOD
AROCLOR 1016	ug/g	BDL	1.0	EPA
AROCLOR 1221	ug/g	BDL	1.0	EPA
AROCLOR 1232	ug/g	BDL	1.0	EPA
AROCLOR 1242	ug/g	BDL	1.0	EPA
AROCLOR 1248	ug/g	BDL	1.0	EPA
AROCLOR 1254	ug/g	BDL	1.0	EPA
AROCLOR 1260	ug/g	BDL	1.0	EPA
TOTAL AROCLORS	ug/g	BDL	1.0	EPA

SAMPLE NUMBER: 0853202-046
IDENTIFIER: TRANSFORMER OIL #1331

PARAMETER	UNIT OF MEASURE	RESULT	DETECT LIMIT	METHOD
AROCLOR 1016	ug/g	BDL	1.0	EPA
AROCLOR 1221	ug/g	BDL	1.0	EPA
AROCLOR 1232	ug/g	BDL	1.0	EPA
AROCLOR 1242	ug/g	BDL	1.0	EPA
AROCLOR 1248	ug/g	BDL	1.0	EPA
AROCLOR 1254	ug/g	BDL	1.0	EPA
AROCLOR 1260	ug/g	18	1.0	EPA
TOTAL AROCLORS	ug/g	18	1.0	EPA

SAMPLE NUMBER: 0853202-047
IDENTIFIER: TRANSFORMER OIL #1332

PARAMETER	UNIT OF MEASURE	RESULT	DETECT LIMIT	METHOD
AROCLOR 1016	ug/g	BDL	1.0	EPA
AROCLOR 1221	ug/g	BDL	1.0	EPA
AROCLOR 1232	ug/g	BDL	1.0	EPA
AROCLOR 1242	ug/g	BDL	1.0	EPA
AROCLOR 1248	ug/g	BDL	1.0	EPA
AROCLOR 1254	ug/g	BDL	1.0	EPA
AROCLOR 1260	ug/g	120	1.0	EPA
TOTAL AROCLORS	ug/g	120	1.0	EPA



Grainger Laboratories Incorporated

Analytical and Consulting Chemists

DATE 4/24/85
GLI# 0853202

PAGE 17

SAMPLE NUMBER: 0853202-048
IDENTIFIER: TRANSFORMER OIL #1333

PARAMETER	UNIT OF MEASURE	RESULT	DETECT LIMIT	METHOD
AROCLOR 1016	ug/g	BDL	1.0	EPA
AROCLOR 1221	ug/g	BDL	1.0	EPA
AROCLOR 1232	ug/g	BDL	1.0	EPA
AROCLOR 1242	ug/g	BDL	1.0	EPA
AROCLOR 1248	ug/g	BDL	1.0	EPA
AROCLOR 1254	ug/g	BDL	1.0	EPA
AROCLOR 1260	ug/g	110	1.0	EPA
TOTAL AROCLORS	ug/g	110	1.0	EPA

SAMPLE NUMBER: 0853202-049
IDENTIFIER: TRANSFORMER OIL #1334

PARAMETER	UNIT OF MEASURE	RESULT	DETECT LIMIT	METHOD
AROCLOR 1016	ug/g	BDL	1.0	EPA
AROCLOR 1221	ug/g	BDL	1.0	EPA
AROCLOR 1232	ug/g	BDL	1.0	EPA
AROCLOR 1242	ug/g	BDL	1.0	EPA
AROCLOR 1248	ug/g	BDL	1.0	EPA
AROCLOR 1254	ug/g	4.3	1.0	EPA
AROCLOR 1260	ug/g	4.2	1.0	EPA
TOTAL AROCLORS	ug/g	8.5	1.0	EPA

BDL: BELOW DETECTION LIMIT

APPROVED BY

Edgar E. Folk II
LABORATORY SUPERVISOR

William Paul Bufford
GENERAL LABORATORY MANAGER

IF YOU HAVE ANY QUESTIONS, PLEASE CONTACT OUR CUSTOMER SERVICE REPRESENTATIVE, ANITA STUTTS.

TRANSFORMERS

1985

6241/3

