

DATE OF INSPECTION  
**19 OCTOBER 1979**

TYPE OF INSPECTION  
 A  INTERNAL & EXTERNAL B  INTERNAL & EXTERNAL WITH PRESSURE TEST C  OPERATIONAL

1. FROM **BASE MAINT. OFFICER  
 CAMP LEJEUNE, N. C.**  
 2. TO **NAVFACENGCOM  
 NORFOLK, VA**

14. CERTIFICATE ISSUED  YES  NO  
 EXPIRES **19 OCT 1981**  
 15. BOILER INSPECTOR  
*Jesse L. Sellers*  
 NAVY OR NATIONAL BOARD NO.  
**NAVFAC 225**

16. REASON FOR NOT ISSUING CERTIFICATE

BOILER DATA

3. MANUFACTURER  
**BRUNNER**  
 4. PROPERTY NO. **PV-153** 5. MFG. SERIAL NO. **261090** 6. MFG. MODEL NO. **9398A**  
 7. BUILDING NO. **FC-100** 8. YEAR BUILT **1976** 9. CAPACITY **17 CU. FT. VOLUME**  
 10. FUEL (Check)  COAL  OIL  GAS  
 11. PRESSURE DESIGNED **200** psi OPERATING **150** psi TEST **200 AIR** psi  
 12. FEED WATER TREATMENT  SATISFACTORY  UNSATISFACTORY  
 13. TYPE  WATER TUBE  FIRE TUBE  C. I.

17. BOILER USE **AIR RECEIVER**  
 18. COMBUSTION CONTROL (Mfg. Name)  
 19. COMBUSTION % CO<sub>2</sub> \_\_\_\_\_ % EXCESS O<sub>2</sub> \_\_\_\_\_ AFTER BOILER \_\_\_\_\_ °F : AFTER HEAT TRAP \_\_\_\_\_ °F  
 20. FLUE GAS TEMPERATURE

SAFETY DEVICES  
 SAFETY VALVES

21. MANUFACTURER **FC. KINGSTON** 22. NUMBER AND SIZE **1 - 3/8"** 23. PSI SETTING **200** 24. CONDITION **GOOD**  
 25. MANUFACTURER **ASHCROFT** 26. CORRECTIONS WATER LEG CONSTANT \_\_\_\_\_ psi; OTHER \_\_\_\_\_ psi  
 27. REASON IF NOT TESTED

FIRING EQUIPMENT

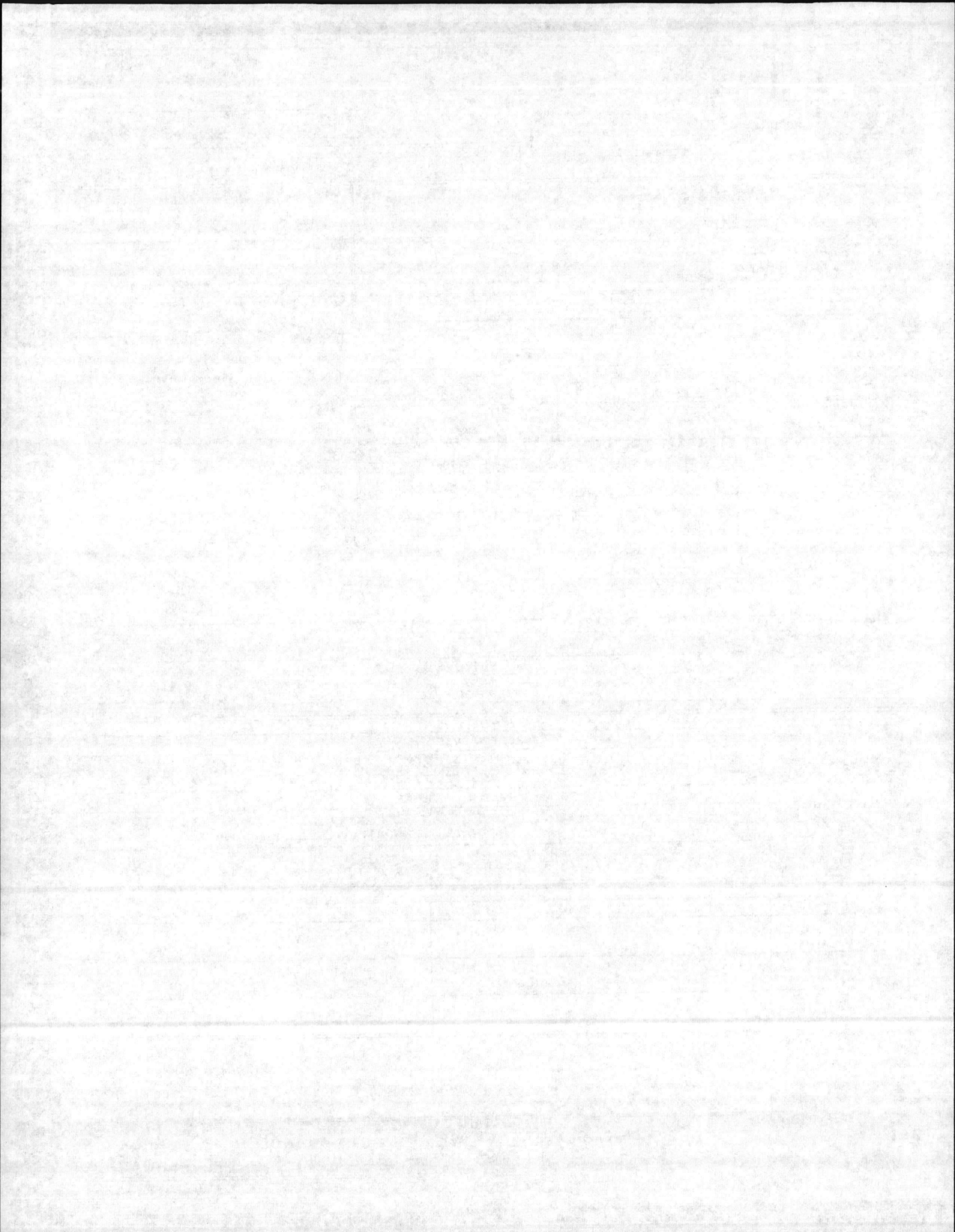
ITEM	IN SERVICE	ALTERNATE
28. MANUFACTURER		
29. TYPE		
FUEL GRADE		
INSPECTOR'S COMMENTS		

**TEST AND MAINTAIN A PM LOG-**

30. NUMBER OF INSPECTOR'S REPORT  SPECIAL COMMENTS

33. SIGNATURE  
*R.M. Clifton*

BY DIRECTION



DATE OF INSPECTION  
**19 OCTOBER 1979**

TYPE OF INSPECTION  
 A  INTERNAL & EXTERNAL B  INTERNAL & EXTERNAL WITH PRESSURE TEST C  OPERATIONAL

1. FROM **BASE MAINT. OFFICER  
 CAMP LEJEUNE, N. C.**  
 2. TO **NAVFACENCOM  
 NORFOLK, VA**

14. CERTIFICATE ISSUED  YES  NO  
**EXPIRES 19 OCT 1981**  
 15. BOILER INSPECTOR

*Jesse L. Sellers*  
 NAVY OR NATIONAL BOARD NO.  
**NAVFAC 225**  
 16. REASON FOR NOT ISSUING CERTIFICATE

**BOILER DATA**

3. MANUFACTURER  
**BRUNNER**

4. PROPERTY NO. <b>PV-153</b>	5. MFG. SERIAL NO. <b>261090</b>	6. MFG. MODEL NO. <b>9398A</b>
7. BUILDING NO. <b>FC-100</b>	8. YEAR BUILT <b>1976</b>	9. CAPACITY <b>17 CU.-FT. VOLUME</b>

10. FUEL (Check)  
 COAL  OIL  GAS

11. PRESSURE  
 DESIGNED **200** psi OPERATING **150** psi TEST **200 AIR** psi

12. FEED WATER TREATMENT  
 SATISFACTORY  UNSATISFACTORY

13. TYPE  
 WATER TUBE  FIRE TUBE  C. I.

17. BOILER USE  
**AIR RECEIVER**

18. COMBUSTION CONTROL (Mfg. Name)

19. COMBUSTION  
 \_\_\_\_\_ % CO<sub>2</sub> \_\_\_\_\_ % EXCESS O<sub>2</sub>

20. FLUE GAS TEMPERATURE  
 AFTER BOILER \_\_\_\_\_ °F ; AFTER HEAT TRAP \_\_\_\_\_ °F

**SAFETY DEVICES  
 SAFETY VALVES**

21. MANUFACTURER  
**FC. KINGSTON**

22. NUMBER AND SIZE <b>1-3/8"</b>	23. PSI SETTING <b>200</b>	24. CONDITION <b>GOOD</b>
--------------------------------------	-------------------------------	------------------------------

25. MANUFACTURER  
**ASHCROFT**

26. CORRECTIONS  
 WATER LEG CONSTANT \_\_\_\_\_ psi; OTHER \_\_\_\_\_ psi

27. REASON IF NOT TESTED

**FIRING EQUIPMENT**

ITEM	IN SERVICE	ALTERNATE
28. MANUFACTURER		
29. TYPE		
30. FUEL GRADE		

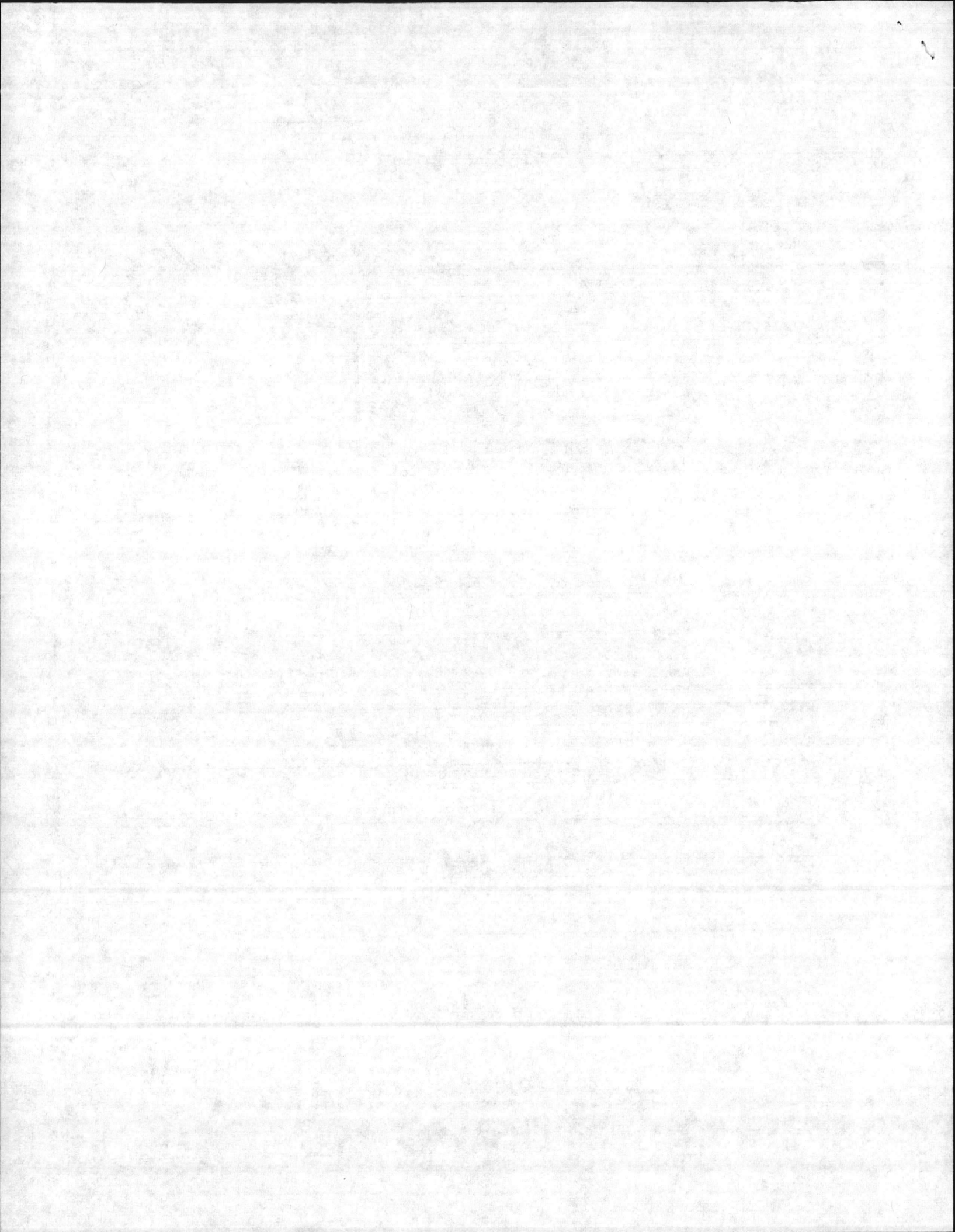
INSPECTOR'S COMMENTS

**TEST AND MAINTAIN A PM LOG.**

31. COPIES OF INSPECTOR'S REPORT  
 SPECIAL COMMENTS

33. SIGNATURE  
*R.M. Clifton*

BY DIRECTION



BOILER INSPECTION CHECK LIST

LOCATION

BLDG NO.

BOILER NO.

DATE

8th MT -

FL-100

PU-153

12/07/81

BOILER MFG. BRUNNER

OPERATING PRESS. 150

DESIGN PRESS 200

CAP. 17 CFU

SERIAL NO. 261090

MODEL NO.

N.B. NO. 9398A

BURNER MFG.

FIRING RATE:

STEAM GAGE NAME: ASHCROFT

PRESS 0-300

TEST OK

SV MFG FC KINGSTON

CAP 118 CFM

NO. 1

SIZE 3/8"

NO. 1 SET 200

OPEN 200

CLOSE 125

NO. 2 SET

OPEN

CLOSE

NO. 3 SET

OPEN

CLOSE

CO2% 02%

STACK TEMP

COMB. EFF.

PURGE TIME

NO. 1 FIREYE C/O

A/L

NO. 2 FIREYE C/O

A/L

HI-STEAM TEMP. C/O

A/L

EXCESS STEAM TEMP. C/O

A/L

HI OIL TEMP. C/O

A/L

HI OIL PRESS. C/O

A/L

LO OIL TEMP. C/O

A/L

LO OIL PRESS. C/O

A/L

LO ATOM AIR/STEAM C/O

A/L

NO. 1 LW C/O

A/L

NO. 2 LW C/O

A/L

LO FURNACE DRAFT C/O

A/L

LO FIRE START C/O

A/L

TYPE OF FUEL

YEAR BUILT 1976

A/L

HEAT SURFACE BOILER

WATER WALL

24' X 66'

REMARKS:

WRITE Report

OK

