

DATE OF INSPECTION
 29 SEPT-1983

TYPE OF INSPECTION
 A INTERNAL & EXTERNAL B INTERNAL & EXTERNAL WITH PRESSURE TEST C OPERATIONAL

1. FROM
 BASE MAINT. OFFICER
 CAMP LEJEUNE, N. C.

2. TO
 NAVFACENGCOM
 NORFOLK, VA.

14. CERTIFICATE ISSUED YES NO
 EXPIRES 29 SEPT 1985

15. BOILER INSPECTOR
 Thomas L. Lanier
 NAVY OR NATIONAL BOARD NO.

NAVFAC 239
 16. REASON FOR NOT ISSUING CERTIFICATE

BOILER DATA

3. MANUFACTURER
 RICHMOND ENGINEERING CO.

4. PROPERTY NO. PV-117 5. MFG. SERIAL NO. K-41631 6. MFG. MODEL NO. N.B. 56603

7. BUILDING NO. AS 4106 8. YEAR BUILT 1967 9. CAPACITY 56 CU. FT. VOL.

10. FUEL (Check)
 COAL OIL GAS

11. PRESSURE
 DESIGNED 135 psi OPERATING 110 psi TEST 202 psi

12. FEED WATER TREATMENT
 SATISFACTORY UNSATISFACTORY

13. TYPE
 WATER TUBE FIRE TUBE C. I.

17. BOILER USE
 AIR-RECEIVER

18. COMBUSTION CONTROL (Mfg. Name)

19. COMBUSTION
 _____ % CO₂ _____ % EXCESS O₂

20. FLUE GAS TEMPERATURE
 AFTER BOILER _____ °F : AFTER HEAT TRAP _____ °F

SAFETY DEVICES
 SAFETY VALVES

21. MANUFACTURER KUNKLE 22. NUMBER AND SIZE 1-2 1/2" 23. PSI SETTING 135 24. CONDITION GOOD

STEAM PRESSURE GAUGE

25. MANUFACTURER MARSHAL TOWN 26. CORRECTIONS
 WATER LEG CONSTANT _____ psi; OTHER _____ psi

27. REASON IF NOT TESTED

FIRING EQUIPMENT

ITEM	IN SERVICE	ALTERNATE
28. MANUFACTURER		
29. TYPE		
30. FUEL GRADE		

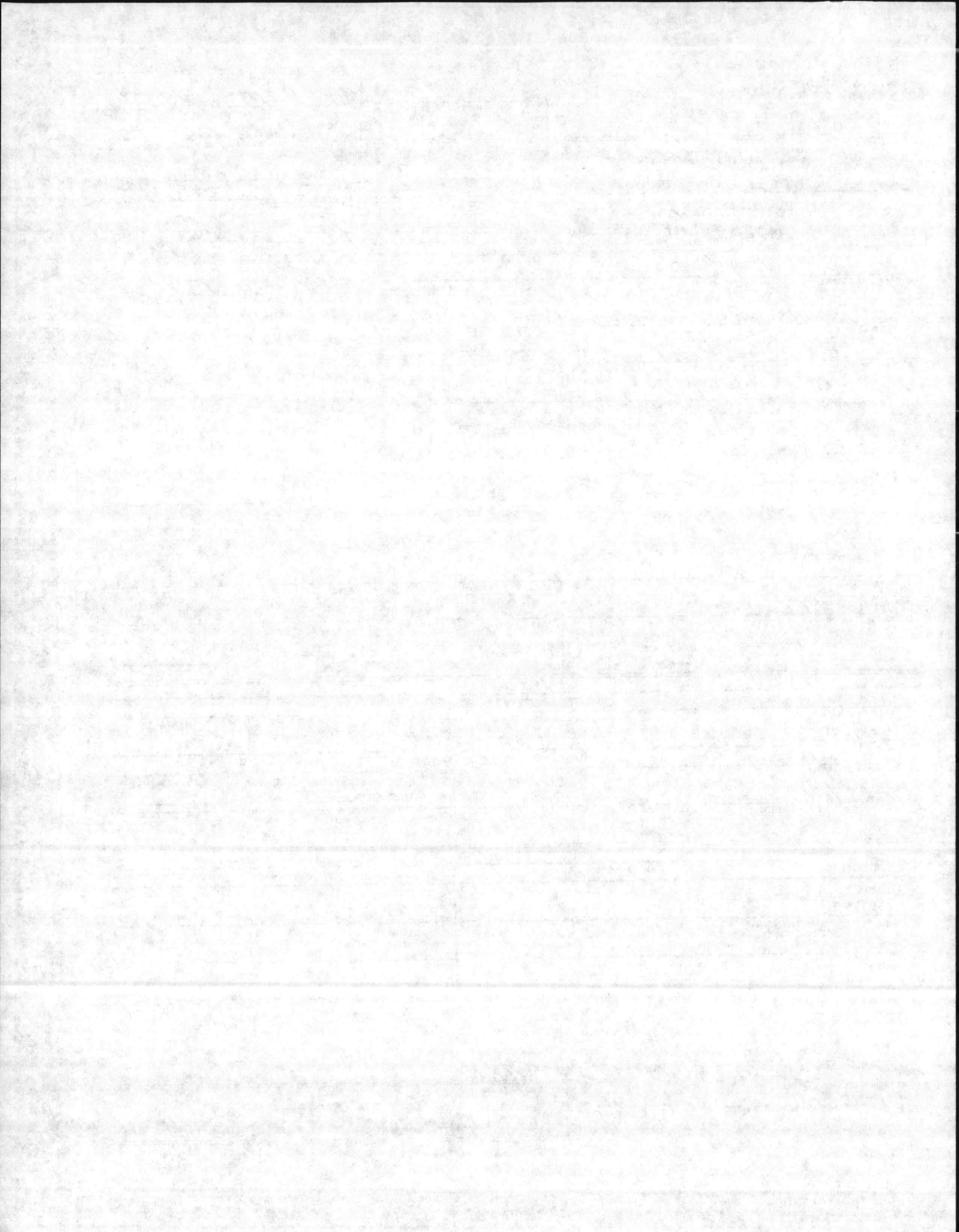
31. INSPECTOR'S COMMENTS

INSTALL AUTO-DRAIN ON TANK

32. ATTACHMENT(S) (Check)
 COPY OF INSPECTOR'S REPORT SPECIAL COMMENTS

33. SIGNATURE
 R. M. Allen

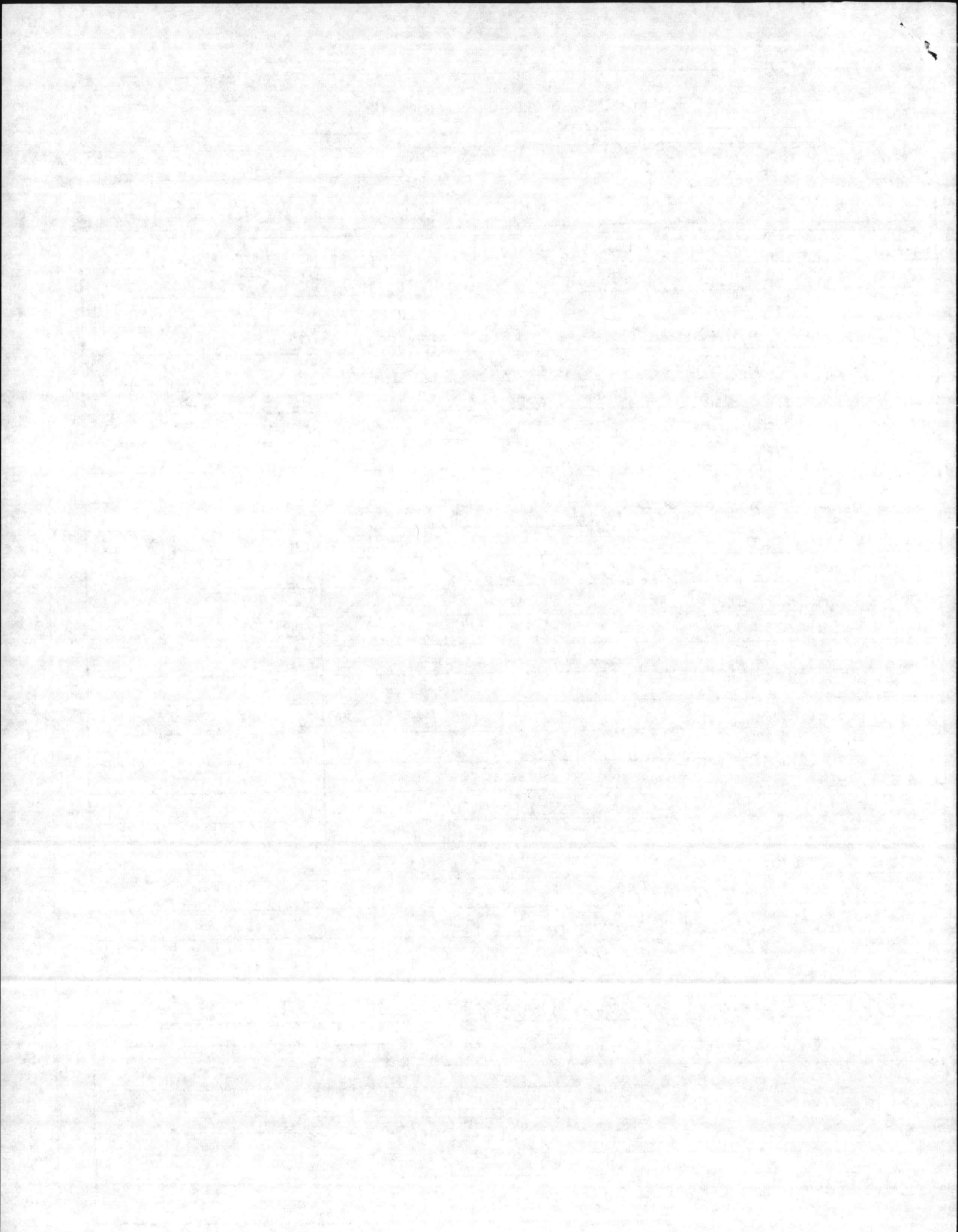
BY DIRECTION



BOILER INSPECTION CHECK LIST

LOCATION		BLDG NO.	BOILER NO.	DATE
MCAS (H)		AS 4106	PV-117	29 SEPT 83
TANK	BOILER MFG. RICHMOND ENGINEERING CO.	OPERATING PRESS. 110	DESIGN PRESS. 135	CAP. CFV 56.
SERIAL NO. K-41631	MODEL NO.	N.B. NO. 56603		
BURNER MFG.	FIRING RATE:			
STEAM GAGE NAME: MARSHALTON	PRESS. 0-200		TEST	
SV MFG KUNKLE VALVE CO.	CAP. CFM 1668	NO. 1	SIZE 2 1/2"	
NO. 1	SET 135 PSI	OPEN 135	CLOSE 130	
NO. 2	SET	OPEN	CLOSE	
NO. 3	SET	OPEN	CLOSE	
CO2%	02%	STACK TEMP	COMB. EFF.	PURGE TIME
NO. 1 FIREYE C/O	HYDRU @ 202 OK			A/L
NO. 2 FIREYE C/O				A/L
HI-STEAM TEMP. C/O	TEST - SIV OK			A/L
EXCESS STEAM TEMP. C/O				A/L
HI OIL TEMP. C/O				A/L
HI OIL PRESS. C/O				A/L
LO OIL TEMP. C/O				A/L
LO OIL PRESS. C/O				A/L
LO ATOM AIR/STEAM C/O				A/L
NO. 1 LW C/O				A/L
NO. 2 LW C/O				A/L
LO FURNACE DRAFT C/O				A/L
LO FIRE START C/O				A/L
TYPE OF FUEL	YEAR BUILT 1967			
HEAT SURFACE	Boiler	WATER WALL		
REMARKS:	SIZE - 36" X 96"			

① INSTALL AUTO-DRAIN ON TANK



AS-4106
PU-117

MFG - Kunda
SET - 135
CAP - 787 CFM
SIZE - 1/4"
FIG NO - 86
MODEL 86-T
PRICE - \$125.43
MALE PIPE THREAD
TRY LEVER - TEST.

