

DATE OF INSPECTION
 9 JUNE 1983

TYPE OF INSPECTION
 A INTERNAL & EXTERNAL B INTERNAL & EXTERNAL WITH PRESSURE TEST C OPERATIONAL

1. FROM **BASE MAINT. OFFICER
 CAMP LEJEUNE, N. C.**
 2. TO **NAVFACENGCOM
 NORFOLK, VA**

14. CERTIFICATE ISSUED YES NO
 EXPIRES 9 JUNE 1985

15. BOILER INSPECTOR
Thomas L Lanier
 NAVY OR NATIONAL BOARD NO.

BOILER DATA

3. MANUFACTURER
CURTIS

16. REASON FOR NOT ISSUING CERTIFICATE
NAVFAC 239

4. PROPERTY NO. **PV-130** 5. MFG. SERIAL NO. 6. MFG. MODEL NO. **NB**
118080

7. BUILDING NO. **AS-410** 8. YEAR BUILT **1967** 9. CAPACITY **13 CU.FT. VOL.**

10. FUEL (Check) 11. PRESSURE
 COAL OIL GAS
 DESIGNED **200** psi OPERATING **150** psi TEST **300** psi

12. FEED WATER TREATMENT 13. TYPE
 SATISFACTORY UNSATISFACTORY
 WATER TUBE FIRE TUBE C. I.

17. BOILER USE
AIR-RECEIVER

18. COMBUSTION CONTROL (Mfg. Name)

19. COMBUSTION
 _____ % CO₂ _____ % EXCESS O₂

20. FLUE GAS TEMPERATURE
 AFTER BOILER _____ °F ; AFTER HEAT TRAP _____ °F

SAFETY DEVICES
 SAFETY VALVES

21. MANUFACTURER **CURTIS** 22. NUMBER AND SIZE **1-3/8"** 23. PSI SETTING **185** 24. CONDITION **GOOD**

STEAM PRESSURE GAUGE

25. MANUFACTURER **U S GAGE** 26. CORRECTIONS
 WATER LEG CONSTANT _____ psi; OTHER _____ psi

27. REASON IF NOT TESTED

FIRING EQUIPMENT

ITEM	IN SERVICE	ALTERNATE
28. MANUFACTURER		
29. TYPE		
30. FUEL GRADE		

31. INSPECTOR'S COMMENTS

**INSTALLED NEW PRESS GAGE
 DRAIN TANK DAILY**

32. ATTACHMENT(S) (Check)
 COPY OF INSPECTOR'S REPORT SPECIAL COMMENTS

33. SIGNATURE
R.M. Keller
 BY DIRECTION

BOILER INSPECTION CHECK LIST

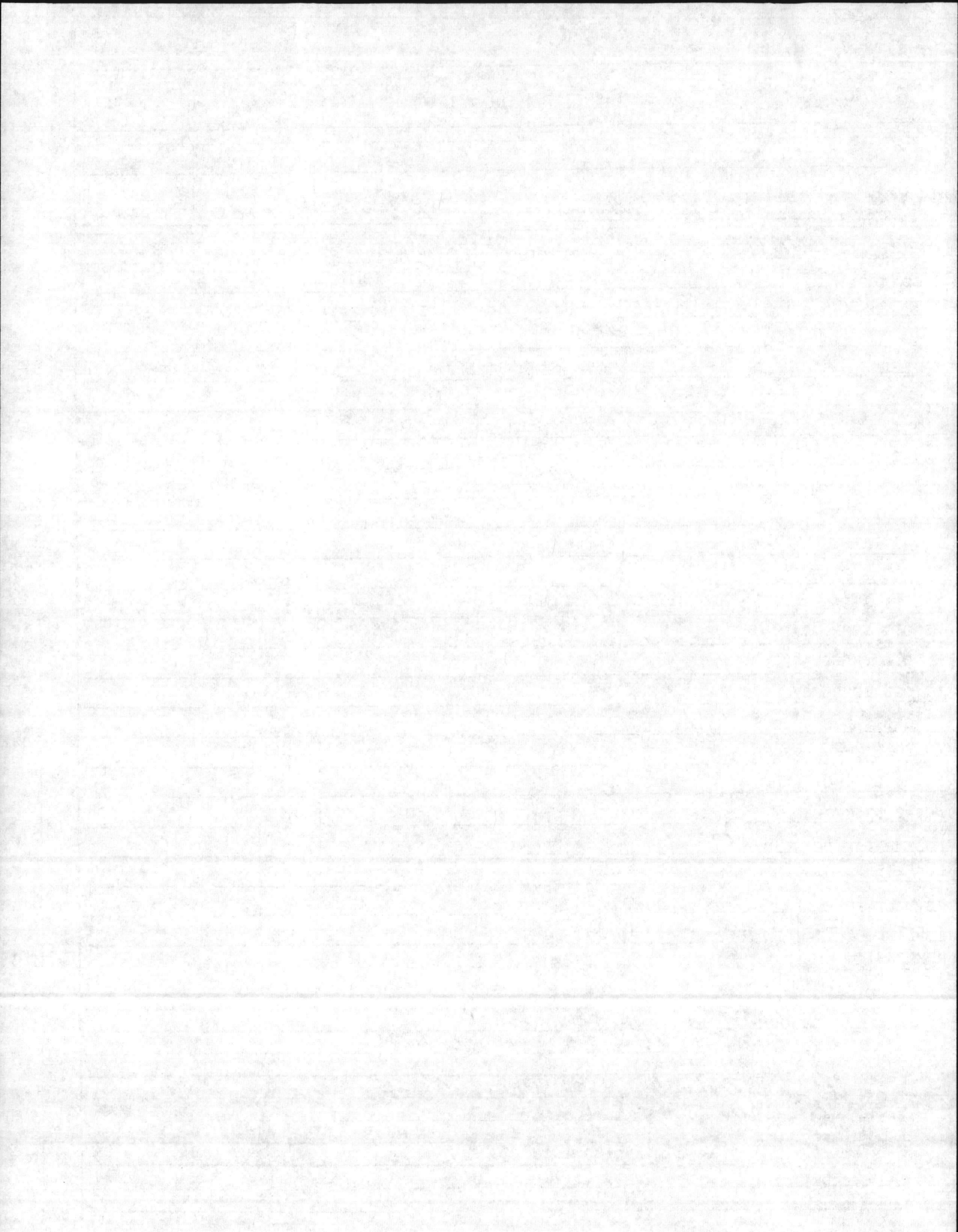
LOCATION		BLDG NO.	BOILER NO.	DATE
MCAS MCX GAS STA.		AS-410	PV-130	9 JUNE 83
BOILER MFG. CURTIS		OPERATING PRESS. 150	DESIGN PRESS. 200	CAP. CFV 13
SERIAL NO.	MODEL NO.	N.B. NO. 118080		
BURNER MFG.		FIRING RATE:		
STEAM GAGE NAME: US GAGE		PRESS. 0-300	TEST 300	
SV MFG CURTIS	CAP-CFM 118	NO. 1	SIZE 3/8	
NO. 1	SET 185	OPEN 185	CLOSE	
NO. 2	SET	OPEN	CLOSE	
NO. 3	SET	OPEN	CLOSE	
CO2%	02%	STACK TEMP	COMB. EFF.	PURGE TIME
NO. 1 FIREYE	C/O		A/L	
NO. 2 FIREYE	C/O		A/L	
HI-STEAM TEMP.	C/O		A/L	
EXCESS STEAM TEMP.	C/O		A/L	
HI OIL TEMP.	C/O		A/L	
HI OIL PRESS.	C/O		A/L	
LO OIL TEMP.	C/O		A/L	
LO OIL PRESS.	C/O		A/L	
LO ATOM AIR/STEAM	C/O		A/L	
NO. 1 LW	C/O		A/L	
NO. 2 LW	C/O		A/L	
LO FURNACE DRAFT	C/O		A/L	
LO FIRE START	C/O		A/L	
TYPE OF FUEL	YEAR BUILT 1967		A/L	
HEAT SURFACE	Boiler	WATER WALL		

OK
CERT. ISSUED

REMARKS:

200 PSI @ 400 °F
 SIZE 24 X 48 - 80 GAL.

① INSTALLED NEW PRESS GAGE - 0-300 USG
 ② DRAIN TANK DAILY



INSPECTION REPORT-BOILERS
 NAVFAC 9-11014/41 (3/67)
 Supersedes NAVDOCKS 2544
 S/N 0105-LF-004-0000

DATE OF INSPECTION
15 OCTOBER 1979

TYPE OF INSPECTION
 A INTERNAL & EXTERNAL B INTERNAL & EXTERNAL WITH PRESSURE TEST C OPERATIONAL

1. FROM **BASE MAINT. OFFICER
 CAMP LEJEUNE, N. C.**
 2. TO **NAVFACENCOM
 NORFOLK VA**

14. CERTIFICATE ISSUED YES NO
EXPIRES 15 OCT. 81
 15. BOILER INSPECTOR

James L. Sellen
 NAVY OR NATIONAL BOARD NO.

NAVFAC 225
 16. REASON FOR NOT ISSUING CERTIFICATE

BOILER DATA

3. MANUFACTURER
CURTIS

4. PROPERTY NO. PV-130	5. MFG. SERIAL NO. 154229	6. MFG. MODEL NO. NR-118080
7. BUILDING NO. AS-410	8. YEAR BUILT 1967	9. CAPACITY 13 CU. FT. VOLUME

10. FUEL (Check)
 COAL OIL GAS

11. PRESSURE
 DESIGNED **200** psi OPERATING **175** psi TEST **185 AIR** psi

12. FEED WATER TREATMENT
 SATISFACTORY UNSATISFACTORY

13. TYPE
 WATER TUBE FIRE TUBE C. I.

17. BOILER USE
AIR RECEIVER

18. COMBUSTION CONTROL (Mfg. Name)

19. COMBUSTION
 _____ % CO₂ _____ % EXCESS O₂

20. FLUE GAS TEMPERATURE
 AFTER BOILER _____ °F : AFTER HEAT TRAP _____ °F

SAFETY DEVICES

SAFETY VALVES

21. MANUFACTURER CURTIS	22. NUMBER AND SIZE 1 - 3/8"	23. PSI SETTING 185	24. CONDITION GOOD
-----------------------------------	--	-------------------------------	------------------------------

STEAM PRESSURE GAUGE

25. MANUFACTURER
ASHCROFT

26. CORRECTIONS
 WATER LEG CONSTANT _____ psi; OTHER _____ psi

27. REASON IF NOT TESTED

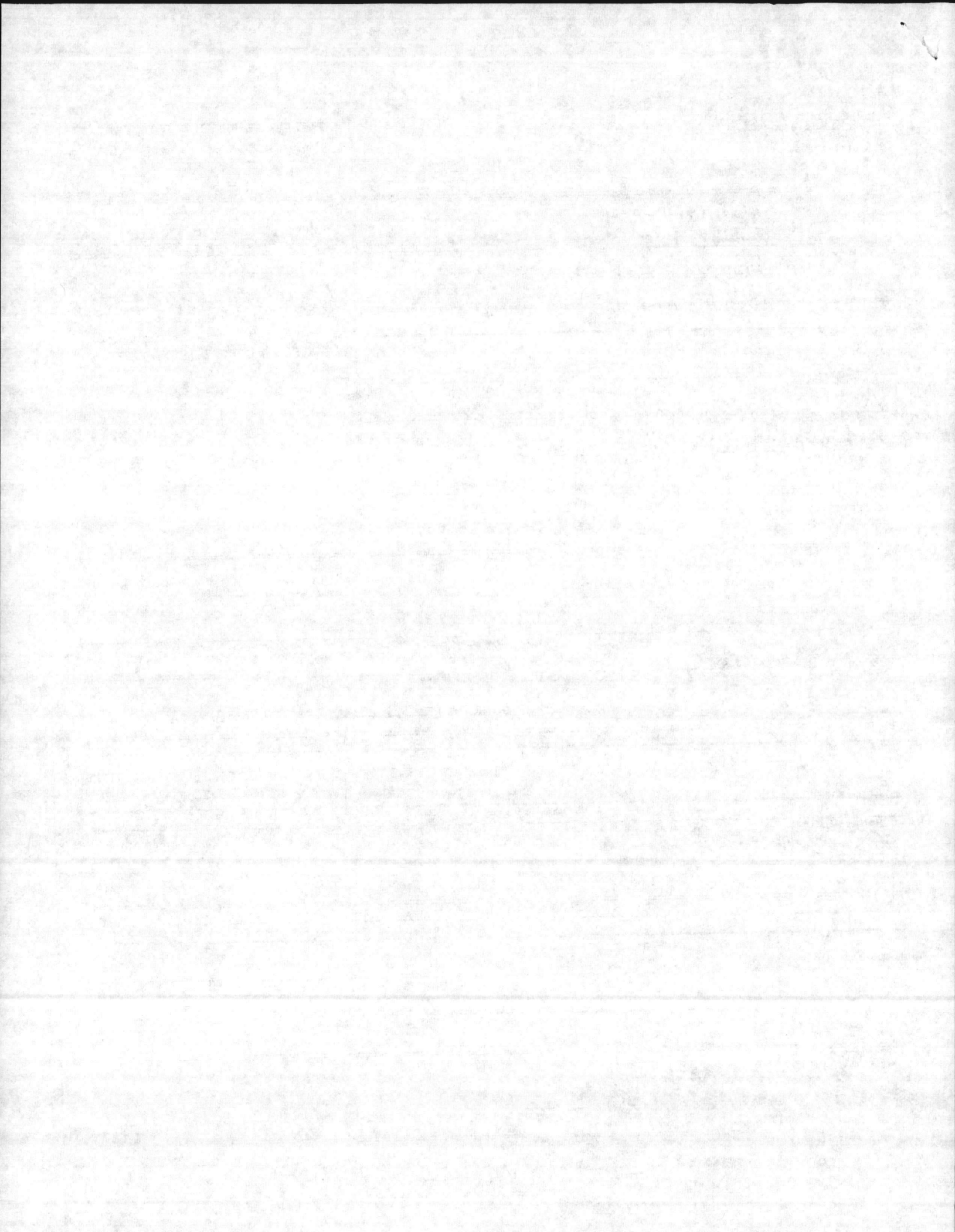
FIRING EQUIPMENT

ITEM	IN SERVICE	ALTERNATE
28. MANUFACTURER		
29. TYPE		
30. FUEL GRADE		

31. INSPECTOR'S COMMENTS
 ① REPAIR AUTOMATIC DRAIN VALVE -
 ② START & MAINTAIN A PM LOG -

32. ATTACHMENT(S) (Check)
 COPY OF INSPECTOR'S REPORT SPECIAL COMMENTS

33. SIGNATURE
R.M. Sellen
 BY DIRECTION



BOILER INSPECTION CHECK LIST

LOCATION

BLDG NO.

BOILER NO.

DATE

EXch- GAS STA.

AS 410

PU-130

15 Oct 79

BOILER MFG. CURTIS

OPERATING PRESS. 175

DESIGN PRESS 200

CAP.

SERIAL NO. 154229

MODEL NO.

N.B. NO. 118080

BURNER MFG.

FIRING RATE:

STEAM GAGE NAME: ASHCROFT

PRESS. 0-300

TEST OK

SV MFG CURTIS

CAP UNK.

NO. 1

SIZE 3/8

NO. 1 SET 185

OPEN ~ 196

CLOSE ~~105~~ 105

NO. 2 SET

OPEN

CLOSE

NO. 3 SET

OPEN

CLOSE

CO2% 02%

STACK TEMP

COMB. EFF.

PURGE TIME

NO. 1 FIREYE C/O

A/L

NO. 2 FIREYE C/O

A/L

HI-STEAM TEMP. C/O 9/0 - 175

A/L

EXCESS STEAM TEMP. C/O C/I - 145

A/L

HI OIL TEMP. C/O

A/L

HI OIL PRESS. C/O

A/L

LO OIL TEMP. C/O

A/L

LO OIL PRESS. C/O

A/L

LO ATOM AIR/STEAM C/O

A/L

NO. 1 LW C/O

A/L

NO. 2 LW C/O

A/L

LO FURNACE DRAFT C/O

A/L

LO FIRE START C/O

A/L

TYPE OF FUEL

YEAR BUILT 1967

A/L

HEAT SURFACE BOILER

WATER WALL

REMARKS:

SH-199
11D-170

24x48 80 GAL

- ① Replace GAGE (sticking)
- ② Check GAGE NEEDS RECALIBRATION 10#
- ③ Auto DRAIN VALVE IN operation

(Signature)

