

DATE OF INSPECTION  
 5 NOV. 1987

TYPE OF INSPECTION  
 A  INTERNAL & EXTERNAL B  INTERNAL & EXTERNAL WITH PRESSURE TEST C  OPERATIONAL

1. FROM BASE MAINT. OFFICER  
 CAMP LEJEUNE, N. C.

14. CERTIFICATE ISSUED  YES  NO  
 EXPIRE 5 NOV. 1999  
 15. BOILER INSPECTOR

2. TO NAVFACENCOM  
 NORFOLK, VA

*Thomas L. Lanier*  
 NAVY OR NATIONAL BOARD NO

BOILER DATA

3. MANUFACTURER

NAVFAC 239  
 16. REASON FOR NOT ISSUING CERTIFICATE

4. PROPERTY NO. 5. MFG. SERIAL NO. 6. MFG. MODEL NO.  
 PU-169 81878-26 N.B. 97198  
 7. BUILDING NO. 8. YEAR BUILT 9. CAPACITY  
 1775 7/10 1978 18 CU. FT. VOL.

10. FUEL (Check) 11. PRESSURE  
 COAL  OIL  GAS DESIGNED OPERATING TEST  
 200 psi 150 psi 200 AIR psi  
 12. FEED WATER TREATMENT 13. TYPE  
 SATISFACTORY  UNSATISFACTORY  WATER TUBE  FIRE TUBE  C. I.

17. BOILER USE  
 AIR-RECEIVER  
 19. COMBUSTION  
 \_\_\_\_\_ % CO<sub>2</sub> \_\_\_\_\_ % EXCESS O<sub>2</sub>

18. COMBUSTION CONTROL (Mfg. Name)  
 20. FLUE GAS TEMPERATURE  
 AFTER BOILER \_\_\_\_\_ °F AFTER HEAT TRAP \_\_\_\_\_ °F

SAFETY DEVICES  
 SAFETY VALVES

21. MANUFACTURER 22. NUMBER AND SIZE 23. PSI SETTING 24. CONDITION  
 F.C. KINGSTON

STEAM PRESSURE GAUGE

25. MANUFACTURER 26. CORRECTIONS  
 ASHCROFT WATER LEG CONSTANT \_\_\_\_\_ psi; OTHER \_\_\_\_\_ psi  
 27. REASON IF NOT TESTED

FIRING EQUIPMENT

ITEM	IN SERVICE	ALTERNATE
28. MANUFACTURER		
29. TYPE		
30. FUEL GRADE		

31. INSPECTOR'S COMMENTS  
 1. CLEAN AIR-COMPRESSOR AND RECEIVER TANK.  
 2. START P. M. LOG

32. ATTACHMENT(S) (Check)  
 COPY OF INSPECTOR'S REPORT  SPECIAL COMMENTS

33. SIGNATURE  
*Timothy G. ...* 11/10/87  
 BY DIRECTION



LOCATION

BLDG.NO.

REC.NO.

DATE

1775

PU-169 7/10

5 NOV 82

MANUFACTURED BY:

HELLEN PROD CO. (A.C.P.)

MFR. SER. NO.

4018X6159

MFR. MODEL NO.

NATL. BRD. NO.

097198

YEAR-BLT. 78

DSG. PRESS. 200

OPER. PRESS.

MAX. TEMP. 650

TYPE

CAP.

OVER ALL LGTH. 68

DIA. 24

SHELL THK. .199

HEAD THK. .162

WATER GAL.

PRESS. GAGE

ASHCROFT

PRESS. RANGE

0-300

SIZE

2"

SV MFR.

F.C. KINGSTON

SIZE

1/4"

CAP.

132 CFM

NO. 1

SET

200

OPEN

17.5

CLOSE

SHUT

NO. 2

SET

OPEN

CLOSE

NO. 3

SET

OPEN

CLOSE

INSPECTION DATE

REMARKS

5 NOV. 81

5 NOV 82

TESTED SIU @ 17.5 SHUT. SEALED SIU.

COMPARED PRESS GAGE / TEST GAGE (10 PSI, 1)

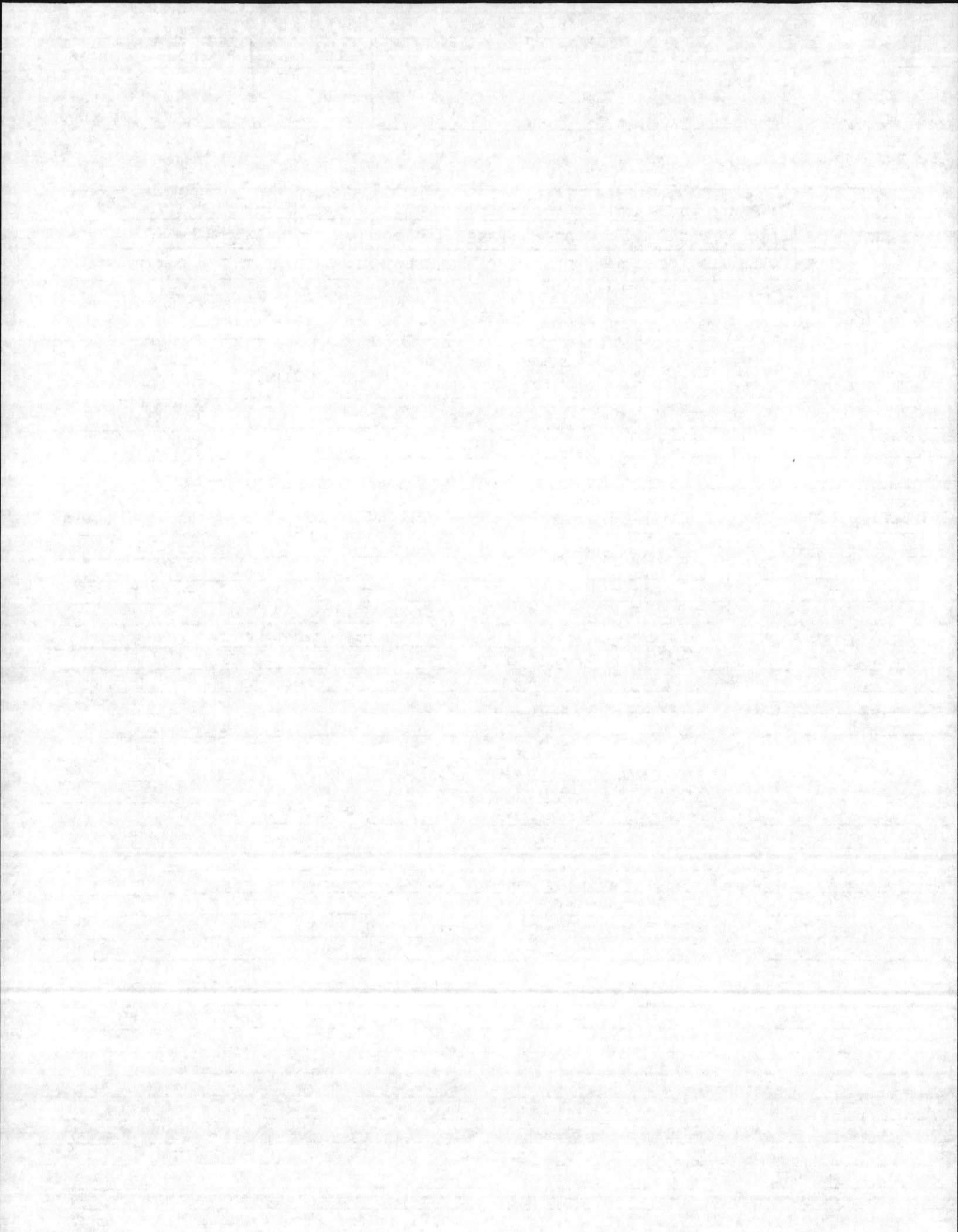
1. INSTALLED 1/4 DRAIN VALVE & LINE
2. CLEANED AUTO DRAIN TRAP.
3. CHECKED PRESS GAGE WITH TEST GAGE.

\* CLEAN AIR RECEIVER TANK GRASS & DIRT

\* START P.M. LOW

ISSUED CERT EXPIRE 5 NOV. 89





DATE OF INSPECTION

20 JUNE 1984

TYPE OF INSPECTION

A  INTERNAL & EXTERNAL

B  INTERNAL & EXTERNAL WITH PRESSURE TEST

C  OPERATIONAL

1. FROM **BASE MAINT. OFFICER  
CAMP LEJEUNE, N. C.**

2. TO **NAVFACENGCOM  
NORFOLK, VA**

14. CERTIFICATE ISSUED  YES  NO  
 EXPIRES 20 JUNE 1984  
 15. BOILER INSPECTOR

*Thomas L Lanier*  
 NAVY OR NATIONAL BOARD NO.

**NAVFAC 239**

16. REASON FOR NOT ISSUING CERTIFICATE

BOILER DATA

3. MANUFACTURER

**HELBEN**

4. PROPERTY NO.

**PV-169**

5. MFG. SERIAL NO.

**81878-24**

6. MFG. MODEL NO.

**N.B. 9719**

7. BUILDING NO.

**1725 2/10**

8. YEAR BUILT

**1978**

9. CAPACITY

**18 CU. FT. VOLUME**

10. FUEL (Check)

COAL  OIL  GAS

11. PRESSURE

DESIGNED

**200** psi

OPERATING

**150** psi

TEST

**200** psi

12. FEED WATER TREATMENT

SATISFACTORY  UNSATISFACTORY

13. TYPE

WATER TUBE

FIRE TUBE

C. I.

17. BOILER USE

**AIR-RECEIVER**

18. COMBUSTION CONTROL (Mfg. Name)

19. COMBUSTION

% CO<sub>2</sub>

% EXCESS O<sub>2</sub>

20. FLUE GAS TEMPERATURE

AFTER BOILER \_\_\_\_\_ °F

:

AFTER HEAT TRAP \_\_\_\_\_ °F

SAFETY DEVICES

SAFETY VALVES

21. MANUFACTURER

**KINGSTON**

22. NUMBER AND SIZE

**1-1/4"**

23. PSI SETTING

**185**

24. CONDITION

**GOOD**

STEAM PRESSURE GAUGE

25. MANUFACTURER

**ASHCROFT**

26. CORRECTIONS

WATER LEG CONSTANT \_\_\_\_\_ psi

OTHER \_\_\_\_\_ psi

27. REASON IF NOT TESTED

FIRING EQUIPMENT

ITEM	IN SERVICE	ALTERNATE
28. MANUFACTURER		
29. TYPE		
30. FUEL GRADE		

31. INSPECTOR'S COMMENTS

**START AND MAINTAIN P.M. LOG.**

32. ATTACHMENT(S) (Check)

COPY OF INSPECTOR'S REPORT

SPECIAL COMMENTS

33. SIGNATURE

*J. L. Sellers*

BY DIRECTION

