

DATE OF INSPECTION
 24 FEB. 1984

TYPE OF INSPECTION
 A INTERNAL & EXTERNAL B INTERNAL & EXTERNAL WITH PRESSURE TEST C OPERATIONAL

1 FROM
 COMMANDING GENERAL
 MCB, CAMP LEJEUNE, NC

2 TO
 NAVFACENCOM
 NORFOLK, VA

14. CERTIFICATE ISSUED YES NO
 EXPIRES 24 FEB 1988
 15. BOILER INSPECTOR
 Thomas L. Lanier
 NAVY OR NATIONAL BOARD NO

3 MANUFACTURER
 WESTINGHOUSE

4 PROPERTY NO
 PV-54

5 MFG SERIAL NO
 —

6 MFG MODEL NO.
 N.B. 85943

7 BUILDING NO
 1408

8 YEAR BUILT
 1949

9 CAPACITY
 10 CU.FT. VOL.

10 FUEL (Check)
 COAL OIL GAS

11. PRESSURE
 DESIGNED 197 psi OPERATING 115 psi TEST 295 psi

12 FEED WATER TREATMENT
 SATISFACTORY UNSATISFACTORY

13. TYPE
 WATER TUBE FIRE TUBE C. I.

16. REASON FOR NOT ISSUING CERTIFICATE

17. BOILER USE
 AIR-RECEIVER

19 COMBUSTION
 % CO₂ _____ % EXCESS O₂ _____

18. COMBUSTION CONTROL (Mfg. Name)

20. FLUE GAS TEMPERATURE
 AFTER BOILER _____ °F AFTER HEAT TRAP _____ °F

21 MANUFACTURER
 KUNKLE

25 MANUFACTURER
 ASHCROFT

27 REASON IF NOT TESTED

SAFETY DEVICES
 SAFETY VALVES

22. NUMBER AND SIZE
 1-1/4"

23. PSI SETTING
 192

24. CONDITION
 GOOD

26. CORRECTIONS
 WATER LEG CONSTANT _____ psi; OTHER _____ psi

ITEM	FIRING EQUIPMENT	
	IN SERVICE	ALTERNATE
28. MANUFACTURER		
29. TYPE		
30. FUEL GRADE		
31. INSPECTOR'S COMMENTS		

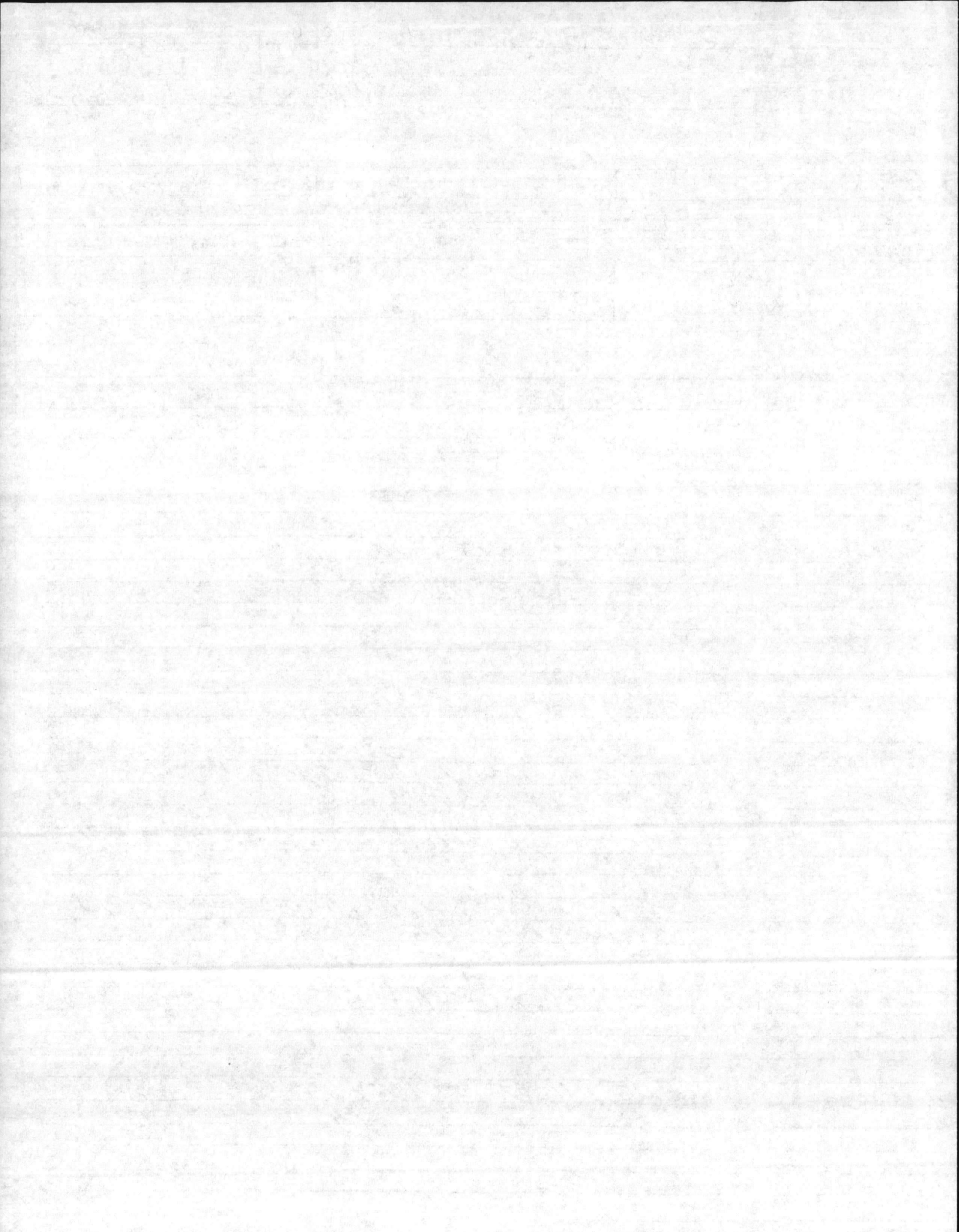
32 ATTACHMENT S1 (Check)
 START & MAINTAIN P.M. LOG

COPY OF INSPECTOR'S REPORT SPECIAL COMMENTS

33 SIGNATURE
 [Signature]
 BY DIRECTION

LOCATION		AIR-RECEIVER		BLDG. NO.	REC. NO.	DATE
				1408	PU-54	24 FEB. 86
MANUFACTURED BY: WESTINGHOUSE						
MFR. SER. NO.		MFR. MODEL NO.		NATL. BRD. NO. 85943		
YEAR BLT. 49	DSG. PRESS. 197	OPER. PRESS. 115	MAX. TEMP. 250	TYPE		
CAP. 10 cuft.	OVER ALL LGTH.	DIA.	SHELL THK. 200	HEAD THK. 250	WATER GAL.	
PRESS. GAGE	ASHCROFT WESTINGHOUSE		PRESS. RANGE	0-300	SIZE	2 1/2
SV MFR.	KUNKLE		SIZE	1/4	CAP. 112 CFM	
NO. 1	SET	197	OPEN	190	CLOSE 115	
NO. 2	SET		OPEN		CLOSE	
NO. 3	SET		OPEN		CLOSE	

INSPECTION DATE	REMARKS
24 FEB. 84	HYDRO @ 295 PSI - OK
24 FEB. 84	LEAKED SIV @ 190 PSI GOOD.
	1. INSTALLED NEW PRESS GAGE - 0-300
	2. INSTALLED NEW 1/4" GATE VALVE (DRAIN)
	3. START & MAINTAIN P.M. LOG.
	4. RELOCATED STOP VALVE IN AIR LINE, NEXT TO TANK.
	* TICKET TO SHEET METAL SHOP TO SECURE GUARD ON V-BELTS
	* TICKET TO SHOP 62 INSIDE PLUMB TO SECURE AIR LINE TO WALL.
	POC CPL - RATED PH - 3585.
	ISSUED CERT EXPIRES (24 FEB 1988)



DATE OF INSPECTION
 20 AUG - 30 DEC 1979

TYPE OF INSPECTION
 A INTERNAL & EXTERNAL B INTERNAL & EXTERNAL WITH PRESSURE TEST C OPERATIONAL

1. FROM **BASE MAINT. OFFICER
 CAMP LEJEUNE, N. C.**
 2. TO **NAVFACENGCOM
 NORFOLK, VA.**

14. CERTIFICATE ISSUED YES NO
 EXPIRES **20 AUG 1981**
 15. BOILER INSPECTOR

Jesse L. Sellen
 NAVY OR NATIONAL BOARD NO
NAVFAC 225
 16. REASON FOR NOT ISSUING CERTIFICATE

BOILER DATA

3. MANUFACTURER
WESTINGHOUSE

4. PROPERTY NO. PV-54	5. MFG. SERIAL NO. 85943	6. MFG. MODEL NO. LMC-
7. BUILDING NO. 1403	8. YEAR BUILT 1949	9. CAPACITY 10 CU. FT. VOLUME

10. FUEL (Check)
 COAL OIL GAS

11. PRESSURE
 DESIGNED **197** psi OPERATING **150** psi TEST **197** psi **AIR**

12. FEED WATER TREATMENT
 SATISFACTORY UNSATISFACTORY

13. TYPE
 WATER TUBE FIRE TUBE C. I.

17. SCHEMATIC
AIR RECEIVER

18. COMBUSTION CONTROL (Mfg. Name)

19. COMBUSTION
 _____ % CO₂ _____ % EXCESS O₂

20. FLUE GAS TEMPERATURE
 AFTER BOILER _____ °F ; AFTER HEAT TRAP _____ °F

SAFETY DEVICES
 SAFETY VALVES

21. MANUFACTURER
KIMBLE

22. NUMBER AND SIZE
1 - 1/4"

23. PSI SETTING
197

24. CONDITION
NEW

25. MANUFACTURER
WESTINGHOUSE

26. CORRECTIONS
AIR STEAM PRESSURE GAUGE

27. REASON IF NOT TESTED
 WATER LEG CONSTANT _____ psi; OTHER _____ psi

FIRING EQUIPMENT

ITEM	IN SERVICE	ALTERNATE
MANUFACTURER		
TYPE		
ELL GRADE		

28. INSPECTOR'S COMMENTS
**THE SAFETY VALVE WAS REPLACED -
 PART & MAINTAIN A PM LOG -**

29. COMMENTS (Check)
 COPY OF INSPECTOR'S REPORT SPECIAL COMMENTS

33. SIGNATURE
R.M. Sellen
 BY DIRECTION

BOILER INSPECTION CHECK LIST

next to 1407
1407 →

LOCATION

MCRCL (MT)

250

BLDG NO. 405
1407

BOILER NO. PV54

DATE

20 AUG 79

BOILER MFG. Westinghouse

OPERATING PRESS. 150

DESIGN PRESS. 197

CAP. 10 LCU

SERIAL NO. 85943

MODEL NO. LMC

N.B. NO.

BURNER MFG.

STEAM GAGE NAME: Westinghouse

FIRING RATE:

SV MFG. ASME STD

CAP. —

PRESS. 0-300

TEST

NO. 1

SET

197

OPEN

NO. ~~1~~ 1
DID NOT AT 210

NO. ~~1~~ 1

SIZE 1/4"

NO. 2

SET

OPEN

CLOSE

150

NO. 3

SET

OPEN

CLOSE

CO2%

02%

STACK TEMP

COMB. EFF.

CLOSE

PURGE TIME

NO. 1 FIREYE

C/O

A/L

NO. 2 FIREYE

C/O

A/L

HI-STEAM TEMP. C/O

A/L

EXCESS STEAM TEMP. C/O

A/L

HI OIL TEMP. C/O

A/L

HI OIL PRESS. C/O

A/L

LO OIL TEMP. C/O

KWIK/1/4

A/L

EXP. INS.

LO OIL PRESS. C/O

300

OK TO write report

A/L

20 AUG 81

LO ATOM AIR/STEAM C/O

A/L

NO. 1 LW C/O

A/L

NO. 2 LW C/O

A/L

LO FURNACE DRAST C/O

A/L

LO FIRE START C/O

A/L

TYPE OF FUEL

YEAR BUILT

1949

A/L

HEAT SURFACE: Boiler

WATER WALL

A/L

REMARKS:

Off: 250
H: 250

20" X 60"

(REPLACE SV) (Ticket called)

(Should HAVE STOP VALVE NEXT TO TANK)

(Should HAVE AUTO DRAIN)

