

INSPECTION REPORT-BOILERS
 NAVFAC 9-11014/41 (3/87)
 Supersedes NAVDOCKS 2544
 S/N 0105-LF-004-0000

DATE OF INSPECTION
19 JUNE 1986

TYPE OF INSPECTION
 A INTERNAL & EXTERNAL B INTERNAL & EXTERNAL WITH PRESSURE TEST C OPERATIONAL

1. FROM
 COMMANDING GENERAL
 MCB, CAMP LEJEUNE, NC

2. TO
 NAVFACENGCOM
 NORFOLK, VA

14. CERTIFICATE ISSUED YES NO
 EXPIRES 19 JUNE 1988

15. BOILER INSPECTOR
Thomas L. Lauer
 NAVY OR NATIONAL BOARD NO.
NAVFAC 239

16. REASON FOR NOT ISSUING CERTIFICATE

BOILER DATA

3. MANUFACTURER
RICHMOND ENG. CO.

4. PROPERTY NO. <u>PV-4</u>	5. MFG. SERIAL NO. <u>521075</u>	6. MFG. MODEL NO. <u>N.B. 13609</u>
7. BUILDING NO. <u>1700</u>	8. YEAR BUILT <u>1952</u>	9. CAPACITY <u>58 CU. FT. VOL.</u>

10. FUEL (Check)
 COAL OIL GAS

11. PRESSURE
 DESIGNED 200 psi OPERATING 100 psi TEST 125 HR psi

12. FEED WATER TREATMENT
 SATISFACTORY UNSATISFACTORY

13. TYPE
 WATER TUBE FIRE TUBE C. I.

NAVFAC COPY

17. BOILER USE
AIR-RECEIVER

18. COMBUSTION CONTROL (Mfg. Name)

19. COMBUSTION
 _____ % CO₂ _____ % EXCESS O₂

20. FLUE GAS TEMPERATURE
 AFTER BOILER _____ °F : AFTER HEAT TRAP _____ °F

SAFETY DEVICES

21. MANUFACTURER
FARRIS

22. NUMBER AND SIZE
1-1 1/2"

23. PSI SETTING
125

24. CONDITION
SMT.

25. MANUFACTURER
ASHCROFT

26. CORRECTIONS
 WATER LEG CONSTANT _____ psi; OTHER _____ psi

27. REASON IF NOT TESTED

FIRING EQUIPMENT

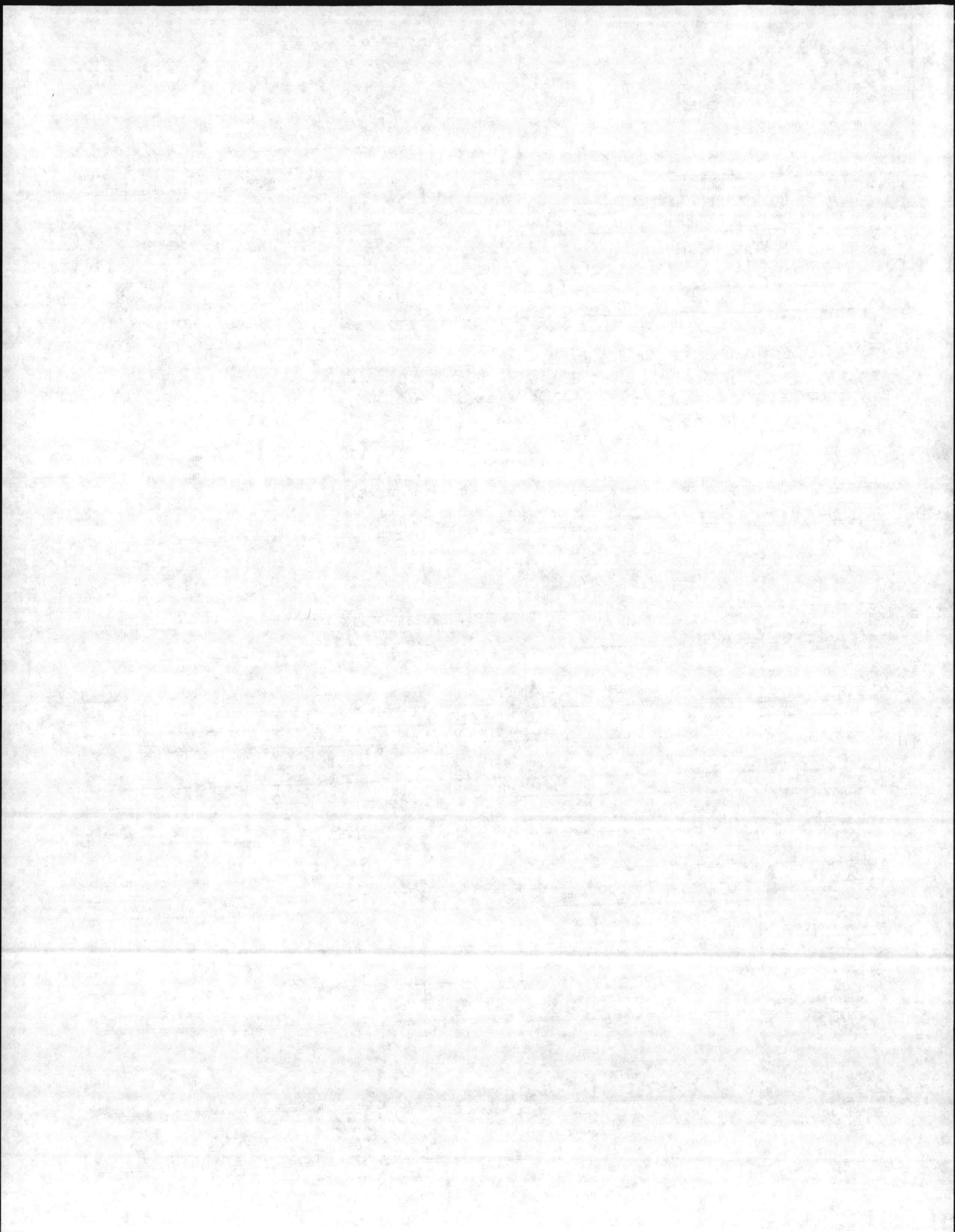
ITEM	IN SERVICE	ALTERNATE
28. MANUFACTURER		
29. TYPE		
30. FUEL GRADE		
31. INSPECTOR'S COMMENTS		

INSTALL HAND WHEEL ON DISCHARGE AIR VALVE.

32. ATTACHMENT(S) (Check)
 COPY OF INSPECTOR'S REPORT SPECIAL COMMENTS

33. SIGNATURE
W. K. [Signature]

BY DIRECTION



LOCATION

BLDG. NO.

REC. NO.

DATE

1700

PV-4

19 JUNE 88

MANUFACTURED BY:

RICHMOND ENG. CO.

MFGR. SER. NO.

MFGR. MODEL NO.

NATL. BRD. NO. 13609

YEAR BLT. 58

DSG. PRESS. 200

OPER. PRESS. 85-100

MAX. TEMP.

TYPE

CAP. 58 CU. FT.

OVER ALL LGTH. 96

DIA. 36

SHELL THK.

HEAD THK.

WATER GAL.

PRESS. GAGE

ASHCROFT

PRESS. RANGE

0-300

SIZE

6"

SV MFGR.

SAR FARRIS

SIZE

1 1/2"

CAP.

2735

41 SCFM

NO. 1

SET

125

OPEN

125

CLOSE

115

NO. 2

SET

OPEN

CLOSE

NO. 3

SET

OPEN

CLOSE

INSPECTION DATE

REMARKS

19 JUNE 84

SV LIFT @ 125 SAT

- 1. DRAIN TANK DAILY
- 2. CHECK OIL DAILY

ISSUED CERT TO EXPIRE 19 JUNE 1988

DATE OF INSPECTION
23 MAY 1984

TYPE OF INSPECTION
 A INTERNAL & EXTERNAL B INTERNAL & EXTERNAL WITH PRESSURE TEST C OPERATIONAL

1. FROM **BASE MAINT. OFFICER
 CAMP LEJEUNE, N. C.**
 2. TO **NAVFACENCOM
 NORFOLK, VA**

14. CERTIFICATE ISSUED YES NO
EXPIRES 23 MAY 1984
 15. BOILER INSPECTOR
Thomas L. Lanier
 NAVY OR NATIONAL BOARD NO.
NAVFAC 239
 16. REASON FOR NOT ISSUING CERTIFICATE

BOILER DATA

3. MANUFACTURER
RICHMOND ENG. CO.

4. PROPERTY NO. PV-4	5. MFG. SERIAL NO. 521075	6. MFG. MODEL NO. N.B. 13609
7. BUILDING NO. 1700	8. YEAR BUILT 1952	9. CAPACITY 58 CU.FT. VOL.

10. FUEL (Check)
 COAL OIL GAS

11. PRESSURE
 DESIGNED **200** psi OPERATING **100** psi TEST **230** psi

12. FEED WATER TREATMENT
 SATISFACTORY UNSATISFACTORY

13. TYPE
 WATER TUBE FIRE TUBE C. I.

17. BOILER USE
AIR RECEIVER

19. COMBUSTION
 _____ % CO₂ _____ % EXCESS O₂

18. COMBUSTION CONTROL (Mfg. Name)

20. FLUE GAS TEMPERATURE
 AFTER BOILER _____ °F : AFTER HEAT TRAP _____ °F

SAFETY DEVICES
 SAFETY VALVES

21. MANUFACTURER
FARRIS ENG.

22. NUMBER AND SIZE 1-1 1/2"	23. PSI SETTING 125	24. CONDITION GOOD
--	-------------------------------	------------------------------

25. MANUFACTURER
ASHCROFT

26. CORRECTIONS
 WATER LEG CONSTANT _____ psi; OTHER _____ psi

27. REASON IF NOT TESTED

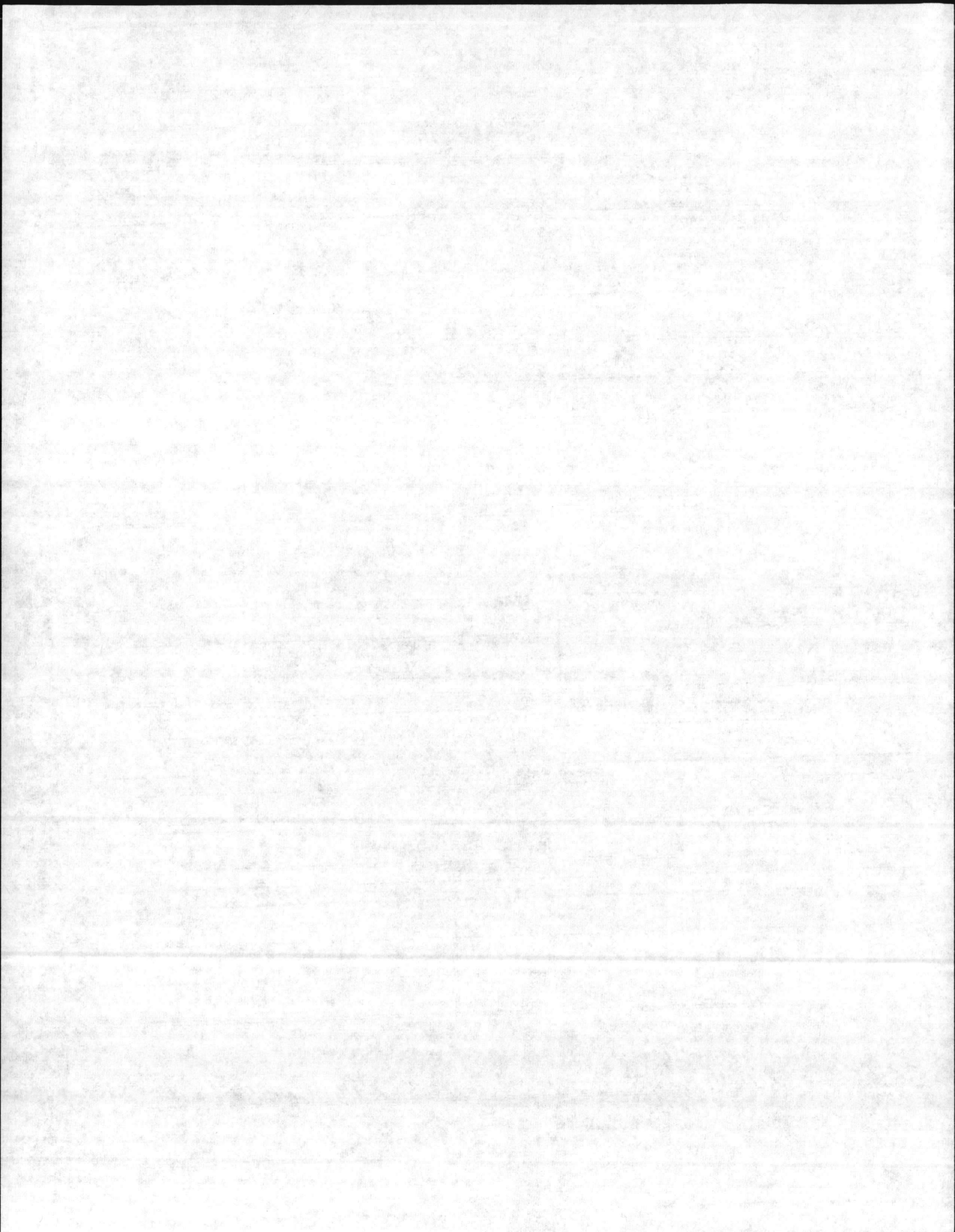
FIRING EQUIPMENT

ITEM	IN SERVICE	ALTERNATE
28. MANUFACTURER		
29. TYPE		
30. FUEL GRADE		
31. INSPECTOR'S COMMENTS		

REPLACE HAND WHEEL ON DISCHARGE AIR VALVE.

32. ATTACHMENT(S) (Check)
 COPY OF INSPECTOR'S REPORT SPECIAL COMMENTS

33. SIGNATURE
F. S. Cone
 BY DIRECTION



LOCATION

BLDG. NO.

REC. NO.

DATE

1700

PV-4

5/23/84

MANUFACTURED BY:

RICHMOND ENG. CO

MFGR. SER. NO. H-18294

MFGR. MODEL NO. 1

NATL. BRD. NO. 13609

YEAR BLT. 52

DSG. PRESS. 200

OPER. PRESS.

MAX. TEMP. 650

TYPE

CAP. 58 cuft.

OVER ALL LGTH. 96

DIA. 36

SHELL THK. 7/16

HEAD THK. 9/16

WATER GAL.

PRESS. GAGE

ASHCROFT

PRESS. RANGE 0-300

SIZE 5"

SV MFGR.

FARRIS

SIZE 1 1/2"

CAP. 2735 CFM

NO. 1

SET 125

OPEN 124

CLOSE

NO. 2

SET

OPEN

CLOSE

NO. 3

SET

OPEN

CLOSE

INSPECTION DATE

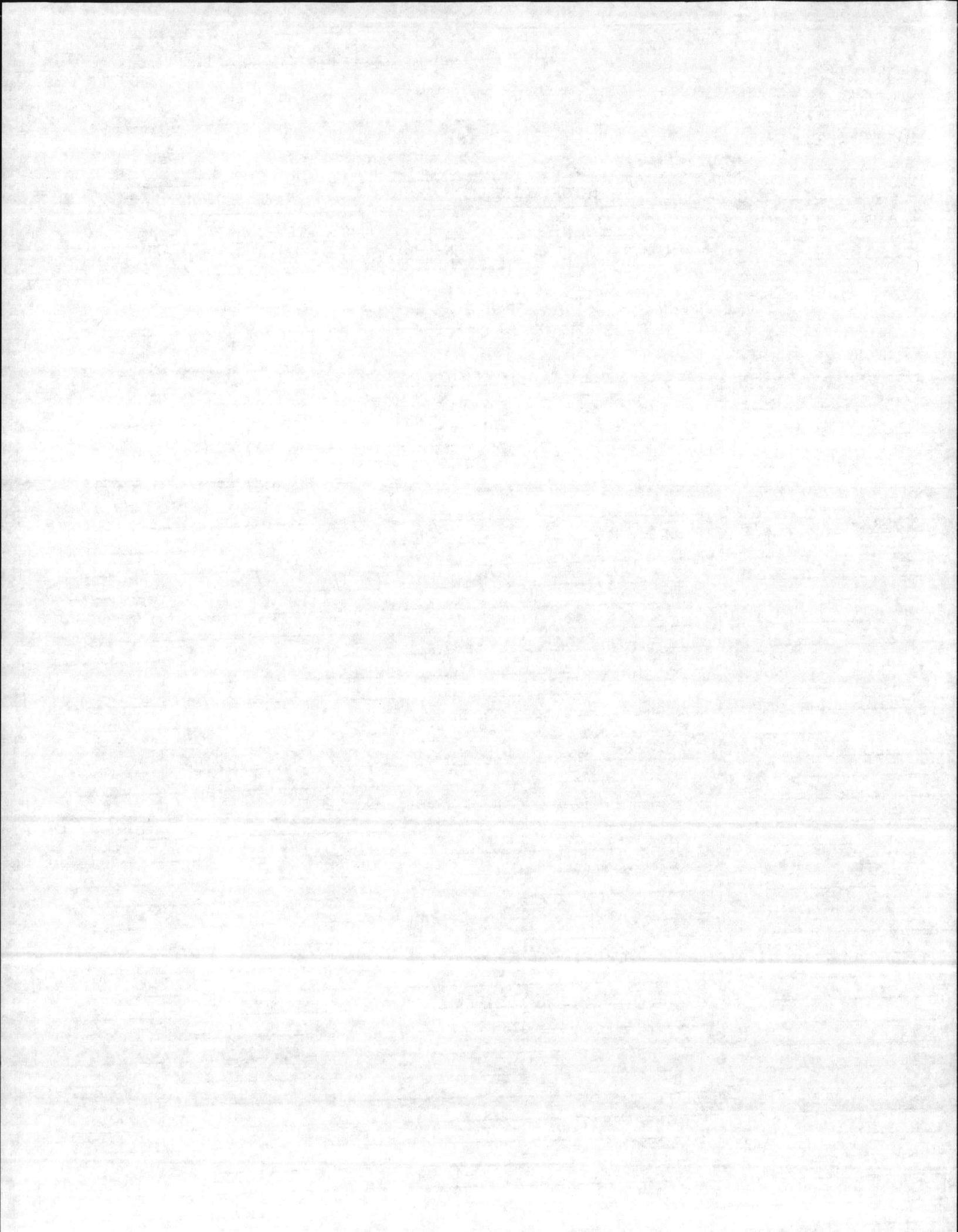
5/22/84

REMARKS

HYDRO @ 230 PSI - GOOD

1. CALIBRATED PRESS. GAGE
2. REPLACE HAND WHEEL ON DISCH. AIR VALVE.

ISSUED CERT 2 YRS.
EXPIRES 23 MAY 86



INSPECTION REPORT-BOILERS
 NAVFAC 9-11014/41 (3/67)
 Supersedes NAVDOCKS 2544
 S/N 0105-LF-004-0000

DATE OF INSPECTION
 13 AUG 1979

TYPE OF INSPECTION
 A INTERNAL & EXTERNAL B INTERNAL & EXTERNAL WITH PRESSURE TEST C OPERATIONAL

1. FROM BASE MAINT. OFFICER
 CAMP LEJEUNE, N. C.

2. TO NAVFACENCOM
 NORFOLK, VA

BOILER DATA

3. MANUFACTURER
 RICHMOND ENG-CO.

4. PROPERTY NO. PU-4 5. MFG. SERIAL NO. 521075 6. MFG. MODEL NO. NB-13609

7. BUILDING NO. 1700 8. YEAR BUILT 1952 9. CAPACITY 58 CU.-FT. VOLUME

10. FUEL (Check) COAL OIL GAS 11. PRESSURE
 DESIGNED 200 psi OPERATING 100 psi TEST 300 psi

12. FEED WATER TREATMENT SATISFACTORY UNSATISFACTORY 13. TYPE WATER TUBE FIRE TUBE C. I.

14. CERTIFICATE ISSUED YES NO
 EXPIRES 13 AUG 1981

15. BOILER INSPECTOR
 Jesse L. Sellen
 NAVY OR NATIONAL BOARD NO
 NAUFAC 225

16. REASON FOR NOT ISSUING CERTIFICATE

17. BOILER USE
 AIR RECEIVER

18. COMBUSTION CONTROL (Mfg. Name)

19. COMBUSTION
 _____ % CO₂ _____ % EXCESS O₂

20. FLUE GAS TEMPERATURE
 AFTER BOILER _____ °F ; AFTER HEAT TRAP _____ °F

SAFETY DEVICES
 SAFETY VALVES

21. MANUFACTURER FARRIS ENG. 22. NUMBER AND SIZE 1-1 1/2" 23. PSI SETTING 125 24. CONDITION GOOD

STEAM PRESSURE GAUGE

25. MANUFACTURER WEKSIER 26. CORRECTIONS
 WATER LEG CONSTANT _____ psi; OTHER _____ psi

27. REASON IF NOT TESTED

FIRING EQUIPMENT

ITEM	IN SERVICE	ALTERNATE
28. MANUFACTURER		
29. TYPE		
30. FUEL GRADE		

31. INSPECTOR'S COMMENTS

ATTACHMENT(S) (Check)
 COPY OF INSPECTOR'S REPORT SPECIAL COMMENTS

33. SIGNATURE
 R. M. Sellen
 BY DIRECTION

BOILER INSPECTION CHECK LIST

A/L FROM WATER PLANT

LOCATION		BLDG NO.	BOILER NO.	DATE
MCBCL CENTRAL HEATING		1700	PV 4	13 AUG 79 29 MAR 79
BOILER MFG. RICHMOND, ENG. CO.		OPERATING PRESS. 100	DESIGN PRESS. 200	CAP. 58 CU. FT. U.
SERIAL NO. U-69		MODEL NO. MB-521075	N.B. NO. 13609	
BURNER MFG.		FIRING RATE:		
AIR GAGE NAME: WEKSIER		PRESS. 0-200	TEST X	
SV MFG. FARRIS ENG. CORP		CAP. 2735	NO. 1	SIZE 1 1/2"
NO. 1	SET 125	OPEN 125	CLOSE	113
NO. 2	SET	OPEN	CLOSE	
NO. 3	SET	OPEN	CLOSE	
CO2%	02%	STACK TEMP	COMB. EFF.	PURGE TIME
NO. 1 FIREYE	C/O			A/L
NO. 2 FIREYE	C/O			A/L
HI-STEAM TEMP.	C/O			A/L
EXCESS STEAM TEMP.	C/O			A/L
HI OIL TEMP.	C/O			A/L
HI OIL PRESS.	C/O			A/L
LO OIL TEMP.	C/O			A/L
LO OIL PRESS.	C/O			A/L
LO ATOM AIR/STEAM	C/O			A/L
NO. 1 LW	C/O			A/L
NO. 2 LW	C/O			A/L
LO FURNACE DRAFT	C/O			A/L
LO FIRE START	C/O			A/L
TYPE OF FUEL	YEAR BUILT 1952			A/L
HEAT SURFACE	Boiler	WATER WALL		

OK TWO YRS

REMARKS:

~~REPLACE PRESS. GAGE - 0-300~~

WP 200 PSI AT 650°F
 RICHMOND ENGINEERING CO.
 RICHMOND, VA.

HP - 9/16
 SH 7/16
 OVERALL #. 96"

CIR - 114"
 DIA. 38"
 HEAD RAD. 36"

