

INSPECTION REPORT-BOILERS
 NAVFAC 9-11014/41 (3/67)
 Supersedes NAVDOCKS 3544
 S/N 0105-LF-004-0000

DATE OF INSPECTION
 2 JUNE 86

TYPE OF INSPECTION
 A INTERNAL & EXTERNAL B INTERNAL & EXTERNAL WITH PRESSURE TEST C OPERATIONAL

1. FROM
 COMMANDING GENERAL
 MCB, CAMP LEIFUNE, NC

2. TO
 NAVFACENGCOM
 NORFOLK, VA

14. CERTIFICATE ISSUED YES NO

15. BOILER INSPECTOR
Thomas L. Lenoir
 NAVY OR NATIONAL BOARD NO.

BOILER DATA

3. MANUFACTURER
 C LEAVER BROOKS

NAVFAC 239
 16. REASON FOR NOT ISSUING CERTIFICATE

4. PROPERTY NO. 2 5. MFG. SERIAL NO. 0634 6. MFG. MODEL NO. 0 B 50

Boiler AND BUILDING
 HAS BEEN RAZED

7. BUILDING NO. OLD NAVAL HOSPITAL 8. YEAR BUILT 1942 9. CAPACITY 19,000 LB/HR.

10. FUEL (Check) 11. PRESSURE
 DESIGNED OPERATING TEST
 COAL OIL GAS 125 psi 100 psi — psi

12. FEED WATER TREATMENT 13. TYPE
 SATISFACTORY UNSATISFACTORY WATER TUBE FIRE TUBE C. I.

→ NAVFAC COPY

17. BOILER USE
 HOSPITAL STANDBY-WET LAY UP
 19. COMBUSTION

18. COMBUSTION CONTROL (Mfg. Name)
 HONEYWELL
 20. FLUE GAS TEMPERATURE

_____ % CO₂ _____ % EXCESS O₂ AFTER BOILER _____ °F : AFTER HEAT TRAP _____ °F

SAFETY DEVICES
 SAFETY VALVES

21. MANUFACTURER CONSOLIDATED 22. NUMBER AND SIZE 2-3" 23. PSI SETTING 120-124 24. CONDITION

STEAM PRESSURE GAUGE

25. MANUFACTURER ASHCROFT 26. CORRECTIONS
 WATER LEG CONSTANT _____ psi; OTHER _____ psi
 27. REASON IF NOT TESTED

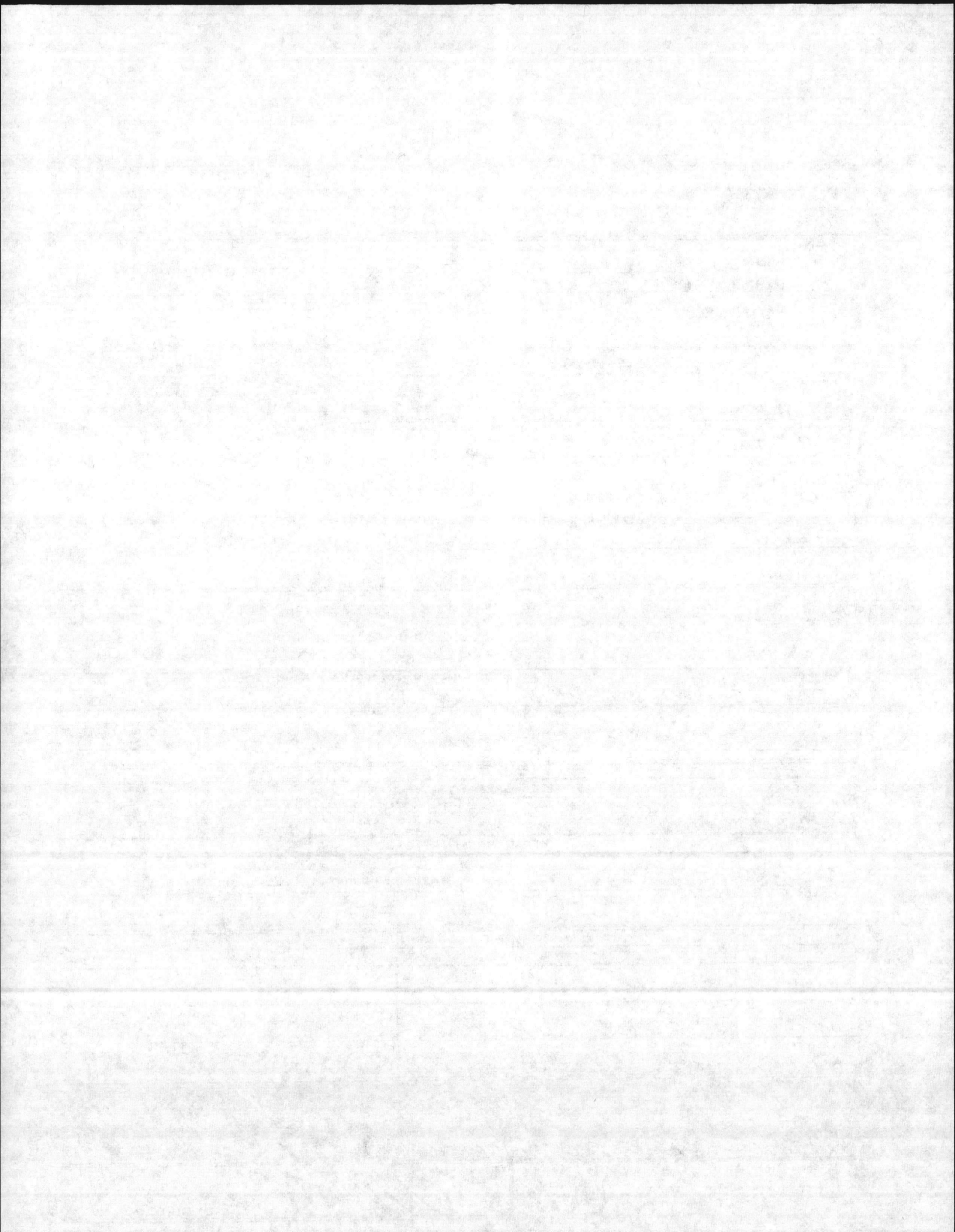
FIRING EQUIPMENT

ITEM	IN SERVICE	ALTERNATE
28. MANUFACTURER	CLEAVER BROOKS	
29. TYPE	ROTARY CUP	
30. FUEL GRADE	#2	
31. INSPECTOR'S COMMENTS		

PLEASE REMOVE FROM INVENTORY LIST

32. ATTACHMENT(S) (Check)
 COPY OF INSPECTOR'S REPORT SPECIAL COMMENTS

33. SIGNATURE
WML
 BY DIRECTION



INSPECTION REPORT - BOILERS
 NAVFAC 9-11014/41 (3/67)
 Supersedes NAVDOCKS 2544
 S/N 0105-004-0090

DATE OF INSPECTION
 4-18-75

TYPE OF INSPECTION
 A INTERNAL & EXTERNAL B INTERNAL & EXTERNAL WITH PRESSURE TEST C OPERATIONAL

1. FROM
 Base MAINT OFFICER, Comphjeune NC.
 2. TO
 Commandant Helms Marine Corps (Code LFF)

14. CERTIFICATE ISSUED YES NO
 EXPIRES 4-18-76
 15. BOILER INSPECTOR
 E.O. Mahley
 NAVY OR NATIONAL BOARD NO.
 NAVFAC 101

BOILER DATA

3. MANUFACTURER
 Cleaver Brooks

4. PROPERTY NO. NAVAL HOSPITAL 2
 5. MFG. SERIAL NO. 0634
 6. MFG. MODEL NO. OB-50

7. BUILDING NO. H-20
 8. YEAR BUILT 1942
 9. CAPACITY 19,000 #/HR.

10. FUEL (Check)
 COAL OIL GAS

11. PRESSURE
 DESIGNED 125 psi OPERATING 100 psi TEST 187 1/2 psi

12. FEED WATER TREATMENT
 SATISFACTORY UNSATISFACTORY

13. TYPE
 WATER TUBE FIRE TUBE C. I.

16. REASON FOR NOT ISSUING CERTIFICATE

17. BOILER USE
 EXPORT

18. COMBUSTION CONTROL (Mfg. Name)
 Honeywell

19. COMBUSTION
 5.0 % CO₂ % EXCESS O₂

20. FLUE GAS TEMPERATURE
 AFTER BOILER 350 °F ; AFTER HEAT TRAP _____ °F

SAFETY DEVICES
SAFETY VALVES

21. MANUFACTURER
 Consolidated

22. NUMBER AND SIZE
 2-3"

23. PSI SETTING
 121-123

24. CONDITION
 Good

STEAM PRESSURE GAUGE

25. MANUFACTURER
 Ashcroft

26. CORRECTIONS
 WATER LEG CONSTANT _____ psi; OTHER _____ psi

27. REASON IF NOT TESTED

FIRING EQUIPMENT

ITEM	IN SERVICE	ALTERNATE
28. MANUFACTURER	Cleaver - Brooks	NONE
29. TYPE	Rotary Cup	
30. FUEL GRADE	#2	

31. INSPECTOR'S COMMENTS
 Active Oxygen - chemical clean r Boil-out with CAUSTIC
 Repair r put in service automatic Hi+Lo Fire Control.

32. ATTACHMENT(S) (Check)
 COPY OF INSPECTOR'S REPORT SPECIAL COMMENTS

33. SIGNATURE
 J.E. Hornum

BY DIRECTION

