

DATE OF INSPECTION

27 JUNE - 13 AUG. 1984

TYPE OF INSPECTION

A  INTERNAL & EXTERNAL

B  INTERNAL & EXTERNAL WITH PRESSURE TEST

C  OPERATIONAL

1. FROM  
 BASE MAINT. OFFICER  
 CAMP LEJEUNE, N. C.

2. TO  
 NAVFACENGCOM  
 NORFOLK, VA

14. CERTIFICATE ISSUED  YES  NO  
 EXPIRES 27 JUNE 1984

15. BOILER INSPECTOR

*Thomas L Lanier*  
 NAVY OR NATIONAL BOARD NO.

NAUFAC 239  
 16. REASON FOR NOT ISSUING CERTIFICATE

BOILER DATA

3. MANUFACTURER

YORK SHIPLEY

4. PROPERTY NO.

40

5. MFG. SERIAL NO.

63-8243-N30038

6. MFG. MODEL NO.

SPH-188-6-97209

7. BUILDING NO.

M-230

8. YEAR BUILT

1963

9. CAPACITY

6,500 LBS/HR.

10. FUEL (Check)

COAL  OIL  GAS

11. PRESSURE

DESIGNED

150 psi

OPERATING

50 psi

TEST

113 psi

12. FEED WATER TREATMENT

SATISFACTORY  UNSATISFACTORY

13. TYPE

WATER TUBE

FIRE TUBE

C. I.

17. BOILER USE

EXPORT

18. COMBUSTION CONTROL (Mfg. Name)

FIREYE

19. COMBUSTION

9.5 % CO<sub>2</sub> \_\_\_\_\_ % EXCESS O<sub>2</sub>

20. FLUE GAS TEMPERATURE

AFTER BOILER 250 °F ; AFTER HEAT TRAP \_\_\_\_\_ °F

SAFETY DEVICES

SAFETY VALVES

21. MANUFACTURER

KUNKLE

22. NUMBER AND SIZE

2 - 1 1/2

23. PSI SETTING

65-70

24. CONDITION

GOOD

STEAM PRESSURE GAUGE

25. MANUFACTURER

U.S. GAGE

26. CORRECTIONS

WATER LEG CONSTANT \_\_\_\_\_ psi; OTHER \_\_\_\_\_ psi

27. REASON IF NOT TESTED

FIRING EQUIPMENT

ITEM	IN SERVICE	ALTERNATE
28. MANUFACTURER	YORK SHIPLEY	
29. TYPE	NOZZLE SPRAY-AIR ATOM	
30. FUEL GRADE	#2	

31. INSPECTOR'S COMMENTS

MAX. FUEL TO BE USED 47 G.P.H.

INSTALL COVERS ON LWCOS

32. ATTACHMENT(S) (Check)

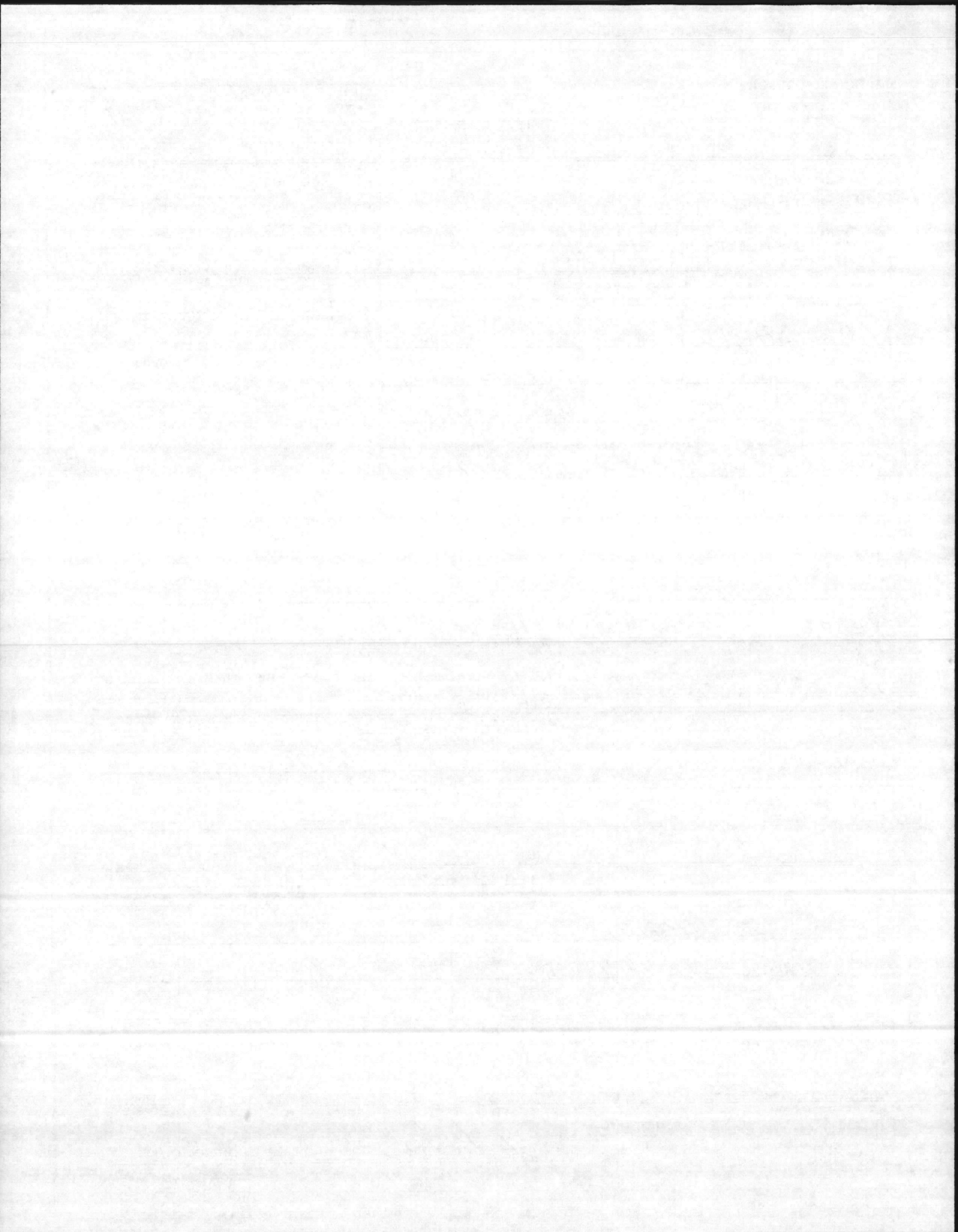
COPY OF INSPECTOR'S REPORT

SPECIAL COMMENTS

33. SIGNATURE

*J. F. Sellen*

BY DIRECTION



DATE OF INSPECTION  
 3 MARCH 1981

TYPE OF INSPECTION  
 A  INTERNAL & EXTERNAL B  INTERNAL & EXTERNAL WITH PRESSURE TEST C  OPERATIONAL

1. FROM: BASE MAINT. OFFICER  
 CAMP LEJEUNE, N. C.  
 2. TO: NAVFACENCOM  
 NORFOLK, VA

14. CERTIFICATE ISSUED  YES  NO  
 EXPIRES 10 JUN 1981  
 15. BOILER INSPECTOR

Jesse L. Sellen  
 NAVY OR NATIONAL BOARD NO.

NAVFAC 225

BOILER DATA

3. MANUFACTURER  
 YORK SHIPLEY

4. PROPERTY NO. 40  
 5. MFG. SERIAL NO. 63-8243-N30038  
 6. MFG. MODEL NO. SPH-188-6-97209

7. BUILDING NO. M-230  
 8. YEAR BUILT 1963  
 9. CAPACITY 6,500 LBS/HR

10. FUEL (Check)  
 COAL  OIL  GAS  
 11. PRESSURE  
 DESIGNED 150 psi OPERATING 50 psi TEST \_\_\_\_\_ psi

12. FEED WATER TREATMENT  
 SATISFACTORY  UNSATISFACTORY  
 13. TYPE  
 WATER TUBE  FIRE TUBE  C. I.

16. REASON FOR NOT ISSUING CERTIFICATE

17. BOILER USE  
 EXPORT  
 19. COMBUSTION  
 8.0 % CO<sub>2</sub> \_\_\_\_\_ % EXCESS O<sub>2</sub>

18. COMBUSTION CONTROL (Mfg. Name)  
 FIREYE  
 20. FLUE GAS TEMPERATURE  
 AFTER BOILER 250 °F ; AFTER HEAT TRAP \_\_\_\_\_ °F

SAFETY DEVICES  
 SAFETY VALVES

21. MANUFACTURER  
 CONSOLIDATED  
 22. NUMBER AND SIZE  
 2-1 1/2"  
 23. PSI SETTING  
 65-75  
 24. CONDITION  
 GOOD

25. MANUFACTURER  
 US GAGE  
 26. CORRECTIONS  
 WATER LEG CONSTANT \_\_\_\_\_ psi; OTHER \_\_\_\_\_ psi

27. REASON IF NOT TESTED

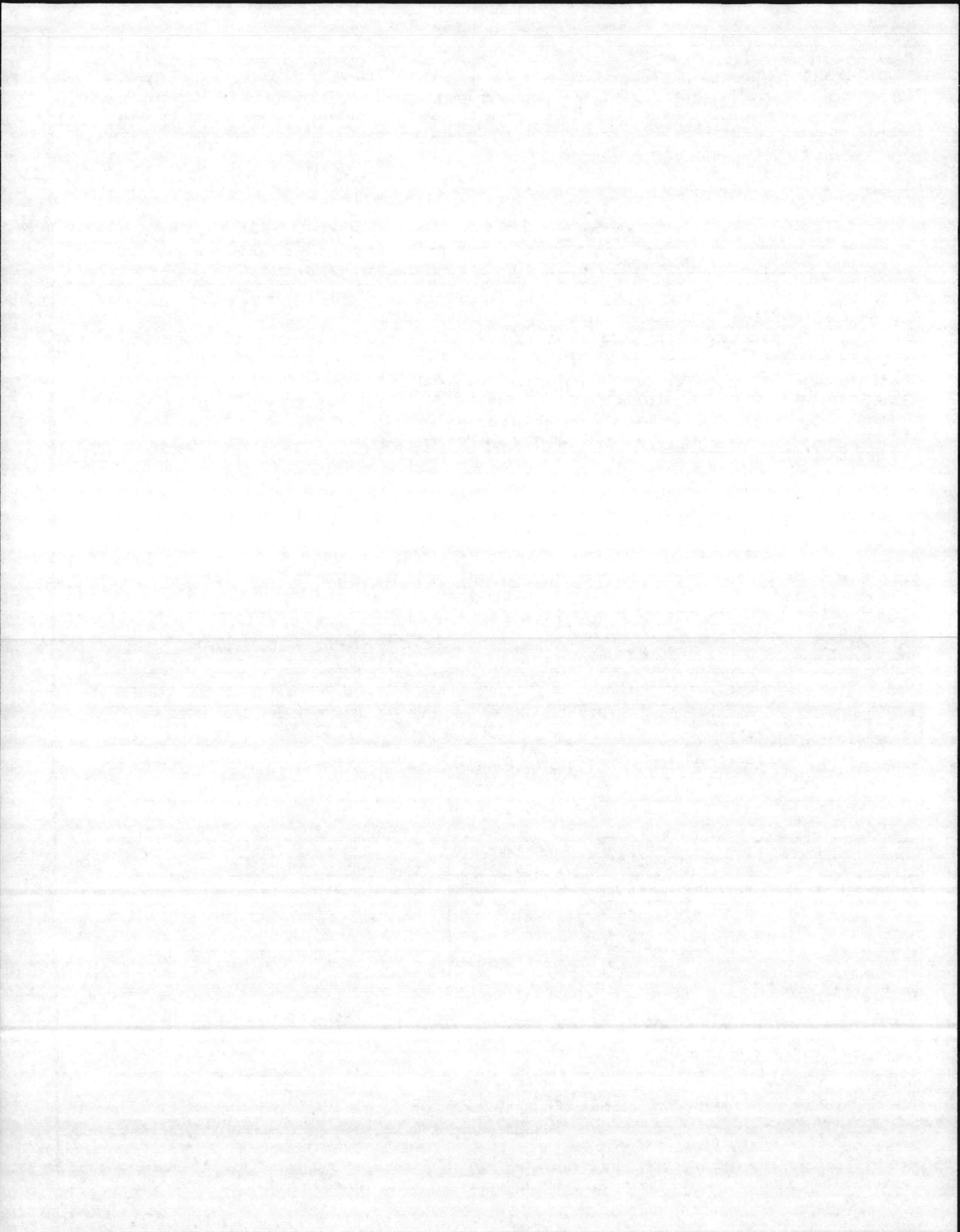
FIRING EQUIPMENT

ITEM	IN SERVICE	ALTERNATE
28. MANUFACTURER	YORK SHIPLEY	
29. TYPE	NOZZLE SPRAY	
30. FUEL GRADE	#2	

31. INSPECTOR'S COMMENTS  
 REPLACE BOILER BLOWDOWN LINE TO BLOWDOWN P.T.

32. ATTACHMENT(S) (Check)  
 COPY OF INSPECTOR'S REPORT  SPECIAL COMMENTS

33. SIGNATURE  
 R.M. Sellen  
 BY DIRECTION



INSPECTION REPORT-BOILERS  
 NAVFAC 9-110:4/41 (3/67)  
 Supersedes NAVDOCKS 2544  
 S/N 0105-004-0000

DATE OF INSPECTION  
 1-6-77

TYPE OF INSPECTION  
 A  INTERNAL & EXTERNAL B  INTERNAL & EXTERNAL WITH PRESSURE TEST C  OPERATIONAL

1. FROM  
 Base MAINT OFFICE Camp Lejeune NC  
 2. TO  
 Commandant Hydrographic Corps (Cadet) E.O. Minkler

14. CERTIFICATE ISSUED  YES  NO  
 Expires 5-4-77  
 15. BOILER INSPECTOR  
 E.O. Minkler  
 NAVY OR NATIONAL BOARD NO

BOILER DATA

3. MANUFACTURER  
 York Shipley

4. PROPERTY NO. 40 5. MFG. SERIAL NO. 13-2243-N 30032 6. MFG. MODEL NO. SDH122-2-97269

7. BUILDING NO. M 230 8. YEAR BUILT 1963 9. CAPACITY 1,500 #/HR

10. FUEL (Check)  
 COAL  OIL  GAS

11. PRESSURE  
 DESIGNED 150 psi OPERATING 50 psi TEST - psi

12. FEED WATER TREATMENT  
 SATISFACTORY  UNSATISFACTORY

13. TYPE  
 WATER TUBE  FIRE TUBE  C. I.

16. REASON FOR NOT ISSUING CERTIFICATE

17. BOILER USE  
 Export

19. COMBUSTION  
 5.5 % CO<sub>2</sub> % EXCESS O<sub>2</sub>

18. COMBUSTION CONTROL (Mfg. Name)  
 Ho. Ficare

20. FLUE GAS TEMPERATURE  
 AFTER BOILER 450 °F ; AFTER HEAT TRAP °F

SAFETY DEVICES  
 SAFETY VALVES

21. MANUFACTURER  
 Consolidated

22. NUMBER AND SIZE 2-1 1/2" 23. PSI SETTING 65-70 24. CONDITION Good

STEAM PRESSURE GAUGE

25. MANUFACTURER  
 U.S. GAGE

26. CORRECTIONS  
 WATER LEG CONSTANT psi; OTHER psi

27. REASON IF NOT TESTED

FIRING EQUIPMENT

ITEM	IN SERVICE	ALTERNATE
28. MANUFACTURER	York Shipley	None
29. TYPE	Gun & Nozzle Air Atom.	
30. FUEL GRADE	#2	

31. INSPECTOR'S COMMENTS

32. ATTACHMENTS (Check)  
 COPY OF INSPECTOR'S REPORT  SPECIAL COMMENTS

33. SIGNATURE  
 Daniel S. White  
 BY DIRECTION



**INSPECTION REPORT-BOILERS**  
 NAVFAC 9-11014/41 (3/67)  
 Supersedes NAVDOCKS 2544  
 S/N 0105-004-0000

DATE OF INSPECTION  
 4-16/5-4-76

TYPE OF INSPECTION  
 A  INTERNAL & EXTERNAL B  INTERNAL & EXTERNAL WITH PRESSURE TEST C  OPERATIONAL

1. FROM  
 2. TO  
 Base Maint. Officer Camp Lejeune N.C.

14. CERTIFICATE ISSUED  YES  NO  
 EXPIRES 2-3-77  
 15. BOILER INSPECTOR

Commandant Admrs Marine Corps (Code LFF)

E.O. Mobley  
 NAVY OR NATIONAL BOARD NO.

**BOILER DATA**

3. MANUFACTURER  
 York Shipley

NAV FAC 101  
 16. REASON FOR NOT ISSUING CERTIFICATE

4. PROPERTY NO. 5. MFG. SERIAL NO. 6. MFG. MODEL NO.  
 40 63-8243-N30038 SPH128-L-97209

7. BUILDING NO. 8. YEAR BUILT 9. CAPACITY  
 M230 1963 6,500 #/HR

10. FUEL (Check) 11. PRESSURE  
 COAL  OIL  GAS  
 DESIGNED 150 psi OPERATING 50 psi TEST 225 psi

12. FEED WATER TREATMENT 13. TYPE  
 SATISFACTORY  UNSATISFACTORY  
 WATER TUBE  FIRE TUBE  C. I.

17. BOILER USE  
 Export  
 19. COMBUSTION  
 \_\_\_\_\_ % CO<sub>2</sub> \_\_\_\_\_ % EXCESS O<sub>2</sub>

18. COMBUSTION CONTROL (Mfg. Name)  
 Fireye  
 20. FLUE GAS TEMPERATURE  
 AFTER BOILER \_\_\_\_\_ °F : AFTER HEAT TRAP \_\_\_\_\_ °F

**SAFETY DEVICES**  
**SAFETY VALVES**

21. MANUFACTURER 22. NUMBER AND SIZE 23. PSI SETTING 24. CONDITION  
 Consolidated 2 - 1/2"

**STEAM PRESSURE GAUGE**

25. MANUFACTURER 26. CORRECTIONS  
 U.S. Gage  
 27. REASON IF NOT TESTED  
 WATER LEG CONSTANT \_\_\_\_\_ psi; OTHER \_\_\_\_\_ psi

**FIRING EQUIPMENT**

ITEM	IN SERVICE	ALTERNATE
28. MANUFACTURER	York Shipley	None
29. TYPE	Gun & Nozzle	
30. FUEL GRADE	#2	

31. INSPECTOR'S COMMENTS  
 Patch Refractory, Burner Ring - Replace middle Trycock  
 Repair or Replace Steam to injector Valve - Replace asbestos millboard in front of Boiler  
 Replace asbestos gyp seals on outer door and explosion plates.  
 Install Blowdown Line & Valve to front of Boiler. Tie to existing line

32. ATTACHMENT(S) (Check)  
 COPY OF INSPECTOR'S REPORT  SPECIAL COMMENTS

33. SIGNATURE  
 Daniel L. White  
 BY DIRECTION

