

DATE OF INSPECTION

12 SEPT. 85, 21 JAN. 1986

TYPE OF INSPECTION

A INTERNAL & EXTERNAL B INTERNAL & EXTERNAL WITH PRESSURE TEST C OPERATIONAL

1. FROM

COMMANDING GENERAL
 MCB, CAMP LEJEUNE, NC

2. TO

NAVFACENGCOM
 NORFOLK, VA

14.

CERTIFICATE ISSUED YES NO

EXPIRES 12 SEPT. 1986

15. BOILER INSPECTOR

Thomas L. Lavier
 NAVY OR NATIONAL BOARD NO.

NAVFAC 239

16. REASON FOR NOT ISSUING CERTIFICATE

BOILER DATA

3. MANUFACTURER

KEWANEE

4. PROPERTY NO.

12

5. MFG. SERIAL NO.

L-2586

6. MFG. MODEL NO.

7623

7. BUILDING NO.

825

8. YEAR BUILT

—

9. CAPACITY

2,900,000 BTU/HR.

10. FUEL (Check)

COAL OIL GAS

11. PRESSURE

DESIGNED

OPERATING

TEST

30

psi

12

psi

45

psi

12. FEED WATER TREATMENT

SATISFACTORY UNSATISFACTORY

13. TYPE

WATER TUBE

FIRE TUBE

C. I.

17. BOILER USE

HEATING

18. COMBUSTION CONTROL (Mfg. Name)

FIREYE

19. COMBUSTION

10.0

% CO₂

% EXCESS O₂

20. FLUE GAS TEMPERATURE

AFTER BOILER 350 °F ; AFTER HEAT TRAP °F

SAFETY DEVICES

SAFETY VALVES

21. MANUFACTURER

WATTS

22. NUMBER AND SIZE

2-2" 1-1"

23. PSI SETTING

30

24. CONDITION

GOOD

STEAM PRESSURE GAUGE

25. MANUFACTURER

HASHCROFT

26. CORRECTIONS

WATER LEG CONSTANT _____ psi; OTHER _____ psi

27. REASON IF NOT TESTED

FIRING EQUIPMENT

ITEM	IN SERVICE	ALTERNATE
28. MANUFACTURER	PETRO	
29. TYPE	ROTARY CUP	
30. FUEL GRADE	IF 2	

31. INSPECTOR'S COMMENTS

D W/S LIGHT SCALE & OXYGEN PITTING @ REPLACE MANHOLE PLATE NEXT YEAR. @ REWIRED BOILER CONTROLS FOR 115 V AC. @ BOILER SETTING IS CRACKED, WILL NEED REPAIRING OR REPLACING IN NEAR FUTURE

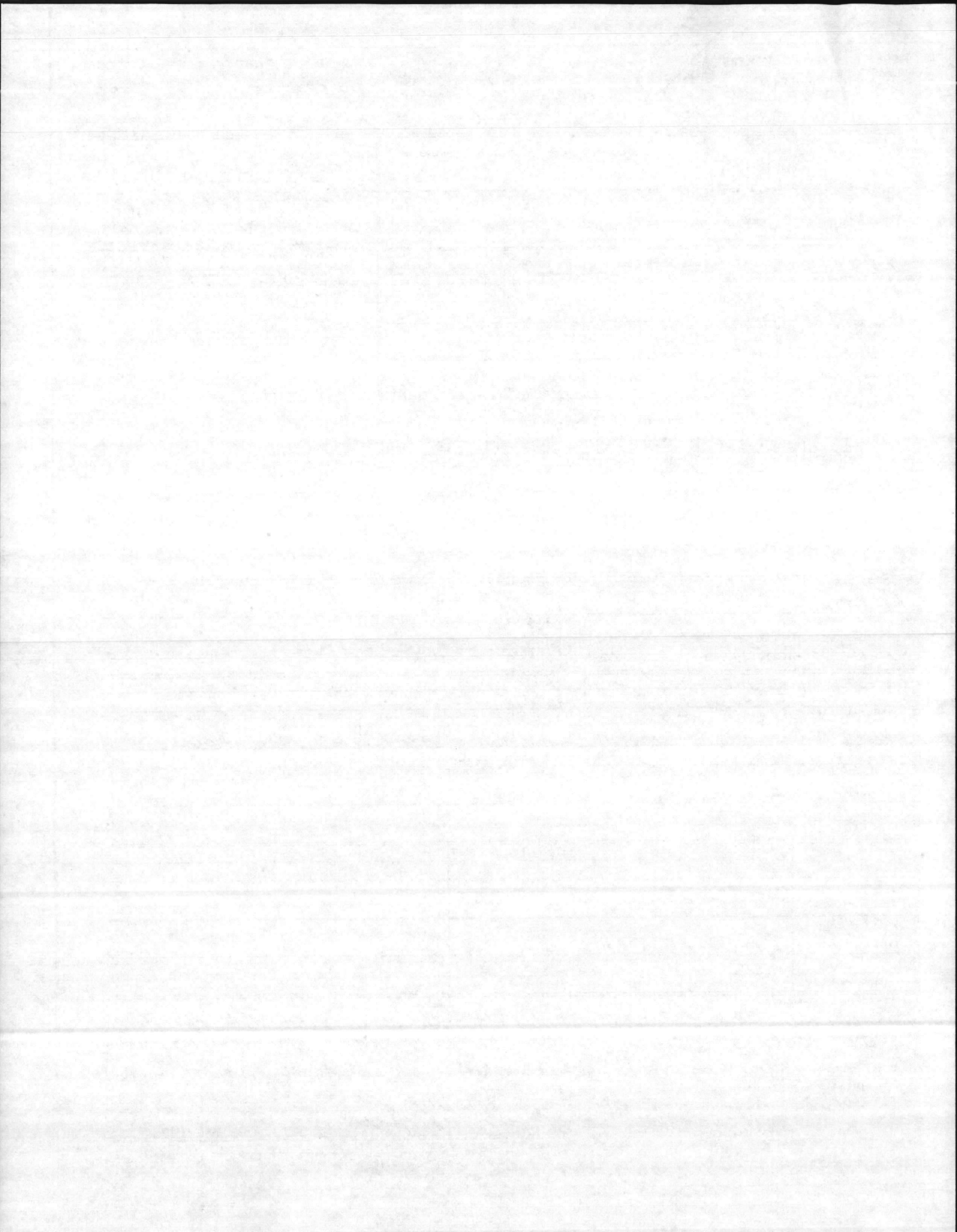
32. ATTACHMENT(S) (Check)

COPY OF INSPECTOR'S REPORT SPECIAL COMMENTS

33. SIGNATURE

W M Kee

BY DIRECTION



INSPECTION REPORT-BOILERS
 NAVFAC 9-11014/41 (3/67)
 Supersedes NAVDOCKS 2544
 S/N 0105-LF-004-0000

DATE OF INSPECTION
 10-7-76

TYPE OF INSPECTION
 A INTERNAL & EXTERNAL B INTERNAL & EXTERNAL WITH PRESSURE TEST C OPERATIONAL

1. FROM
 Base Maint Officer Camp Lejeune NC.
 2. TO
 Commandant Hdqtrs Marine Corps (Code 117)

14. CERTIFICATE ISSUED YES NO
 EXPIRES 5-3-77
 15. BOILER INSPECTOR
 E.O. Mobley
 NAVY OR NATIONAL BOARD NO
 NAV FAC 101

BOILER DATA

3. MANUFACTURER
 Kewanee

4. PROPERTY NO. 12	5. MFG. SERIAL NO. L2586	6. MFG. MODEL NO. 7623
7. BUILDING NO. 825	8. YEAR BUILT -	9. CAPACITY 2,900,000 BTU/Hr

10. FUEL (Check)
 COAL OIL GAS

11. PRESSURE
 DESIGNED 30 psi OPERATING 12 psi TEST - psi

12. FEED WATER TREATMENT
 SATISFACTORY UNSATISFACTORY

13. TYPE
 WATER TUBE FIRE TUBE C. I.

16. REASON FOR NOT ISSUING CERTIFICATE

17. BOILER USE
 Heating

18. COMBUSTION CONTROL (Mfg. Name)
 Fireye

19. COMBUSTION
 6.0 % CO₂ _____ % EXCESS O₂

20. FLUE GAS TEMPERATURE
 AFTER BOILER 350 °F ; AFTER HEAT TRAP _____ °F

**SAFETY DEVICES
 SAFETY VALVES**

21. MANUFACTURER
 WATTS

22. NUMBER AND SIZE
 2-2" - 1-1"

23. PSI SETTING

24. CONDITION

25. MANUFACTURER
 Ashcroft

26. CORRECTIONS
 WATER LEG CONSTANT _____ psi; OTHER _____ psi

27. REASON IF NOT TESTED

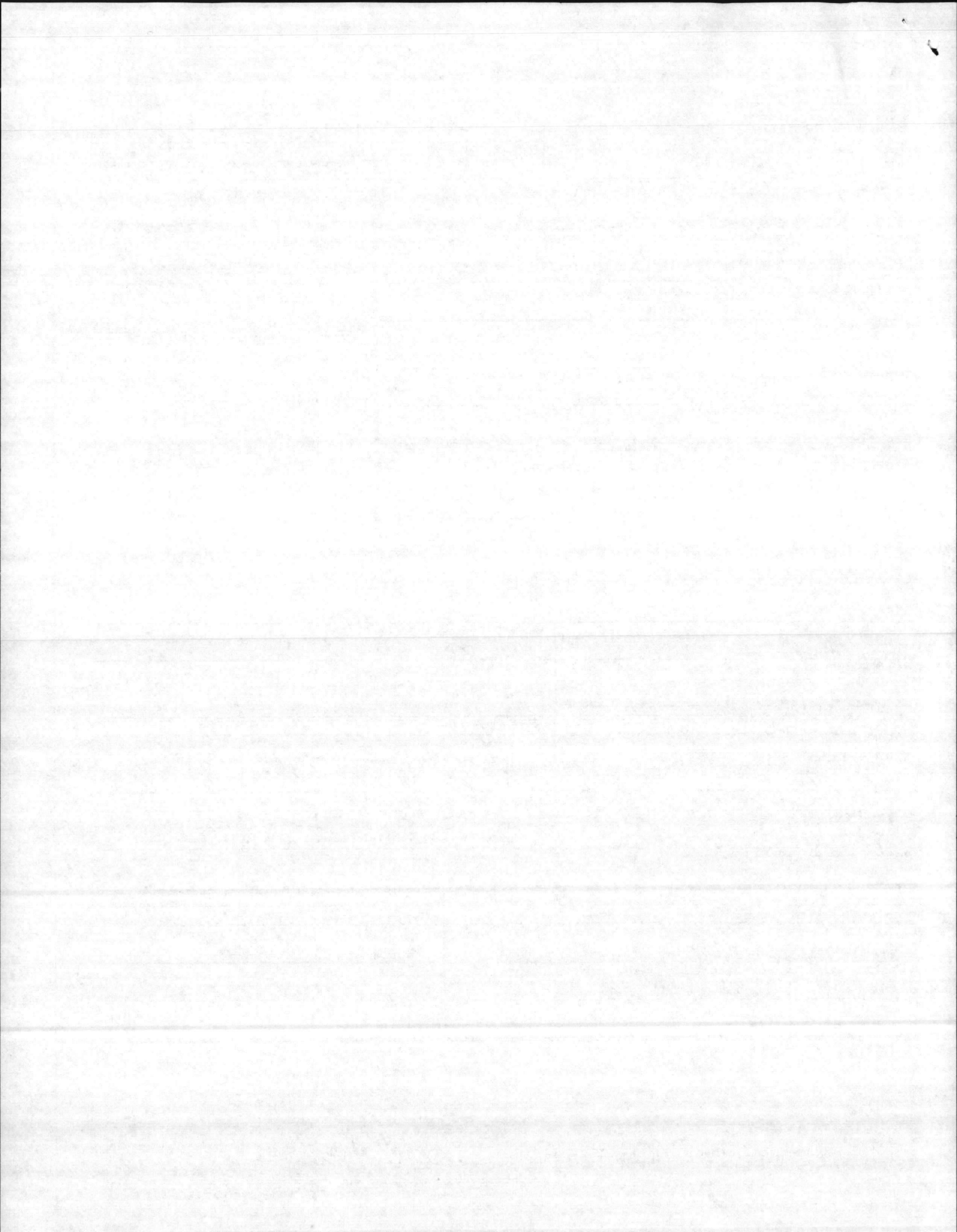
FIRING EQUIPMENT

ITEM	IN SERVICE	ALTERNATE
28. MANUFACTURER	Petro	None
29. TYPE	Rotary Cup	
30. FUEL GRADE	#2	

31. INSPECTOR'S COMMENTS
 OK.

32. ATTACHMENT(S) (Check)
 COPY OF INSPECTOR'S REPORT SPECIAL COMMENTS

33. SIGNATURE
 Daniel S. White
 BY DIRECTION



INSPECTION REPORT-BOILERS
 NAVFAC 9-11014/41 (3/67)
 Supersedes NAVDOCKS 2544
 S/N 0105-004-0000

DATE OF INSPECTION

5-3/5-10-76

TYPE OF INSPECTION

A INTERNAL & EXTERNAL

B INTERNAL & EXTERNAL WITH PRESSURE TEST

C OPERATIONAL

1. FROM

Base Maint Officer Camp Lejeune N.C.

14.

CERTIFICATE ISSUED YES NO

Expires 12-16-76

15. BOILER INSPECTOR

E.C. Meehan
 NAVY OR NATIONAL BOARD NO.

NAV FAC 101
 16. REASON FOR NOT ISSUING CERTIFICATE

BOILER DATA

3. MANUFACTURER

Kewanee

4. PROPERTY NO.

12

5. MFG. SERIAL NO.

L 5586

6. MFG. MODEL NO.

7623

7. BUILDING NO.

825

8. YEAR BUILT

NA

9. CAPACITY

4,000,000 BTU/HR

10. FUEL (Check)

COAL

OIL

GAS

11. PRESSURE

DESIGNED

OPERATING

TEST

30

psi

12

psi

45

psi

12. FEED WATER TREATMENT

SATISFACTORY

UNSATISFACTORY

13. TYPE

WATER TUBE

FIRE TUBE

C. I.

17. BOILER USE

Heating

18. COMBUSTION CONTROL (Mfg. Name)

Fireeye

19. COMBUSTION

% CO₂

% EXCESS O₂

AFTER BOILER _____ °F ; AFTER HEAT TRAP _____ °F

SAFETY DEVICES

SAFETY VALVES

21. MANUFACTURER

Watts

22. NUMBER AND SIZE

2-3" 1-1"

23. PSI SETTING

24. CONDITION

STEAM PRESSURE GAUGE

25. MANUFACTURER

Ashcroft

26. CORRECTIONS

WATER LEG CONSTANT _____ psi; OTHER _____ psi

27. REASON IF NOT TESTED

FIRING EQUIPMENT

ITEM	IN SERVICE	ALTERNATE
28. MANUFACTURER	Petro	None
29. TYPE	Rotary Cup	
30. FUEL GRADE	#2	

31. INSPECTOR'S COMMENTS

Repair Brick work in fire box and exterior boiler setting, back center

32. ATTACHMENT(S) (Check)

COPY OF INSPECTOR'S REPORT

SPECIAL COMMENTS

33. SIGNATURE

BY DIRECTION

