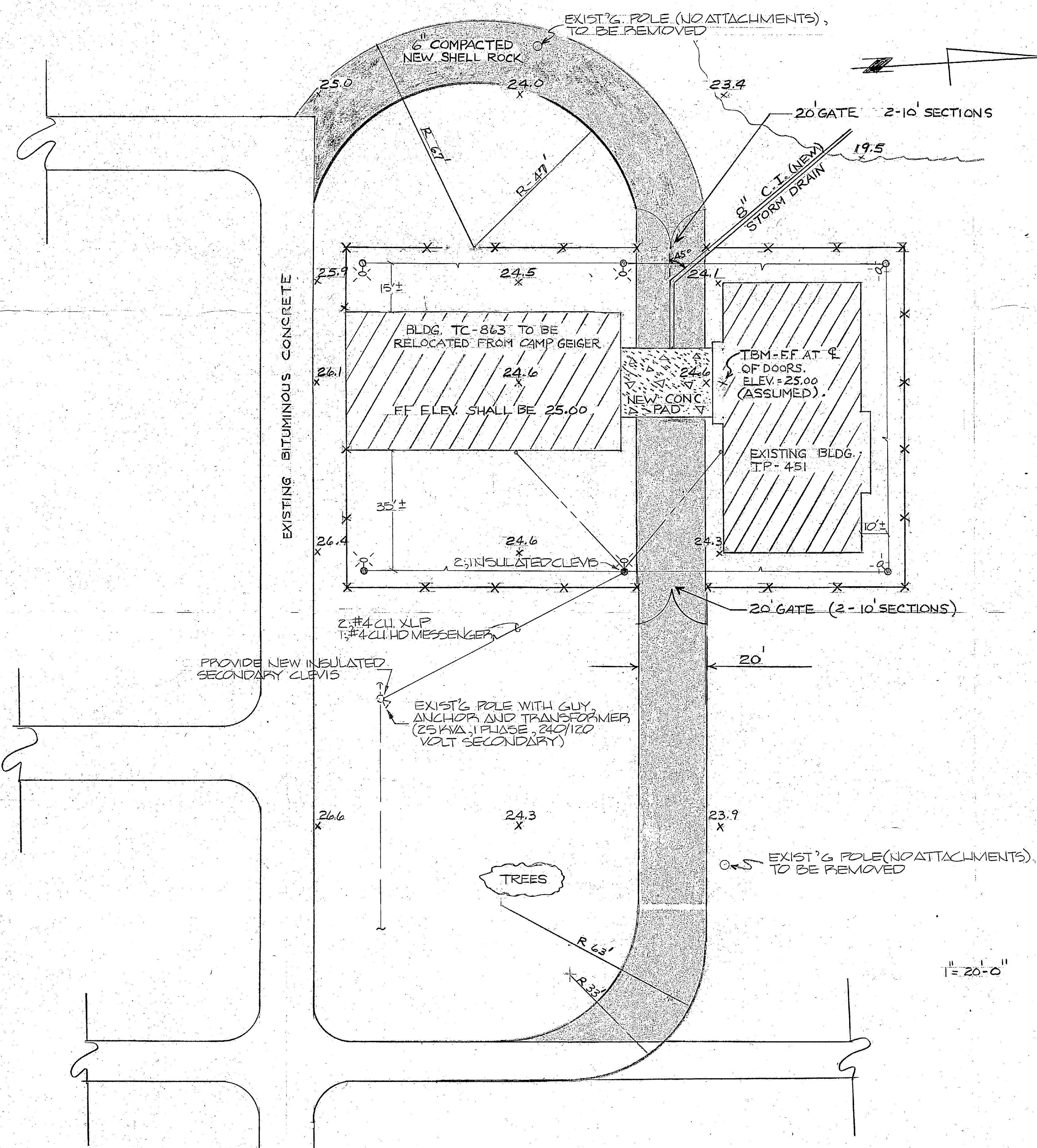
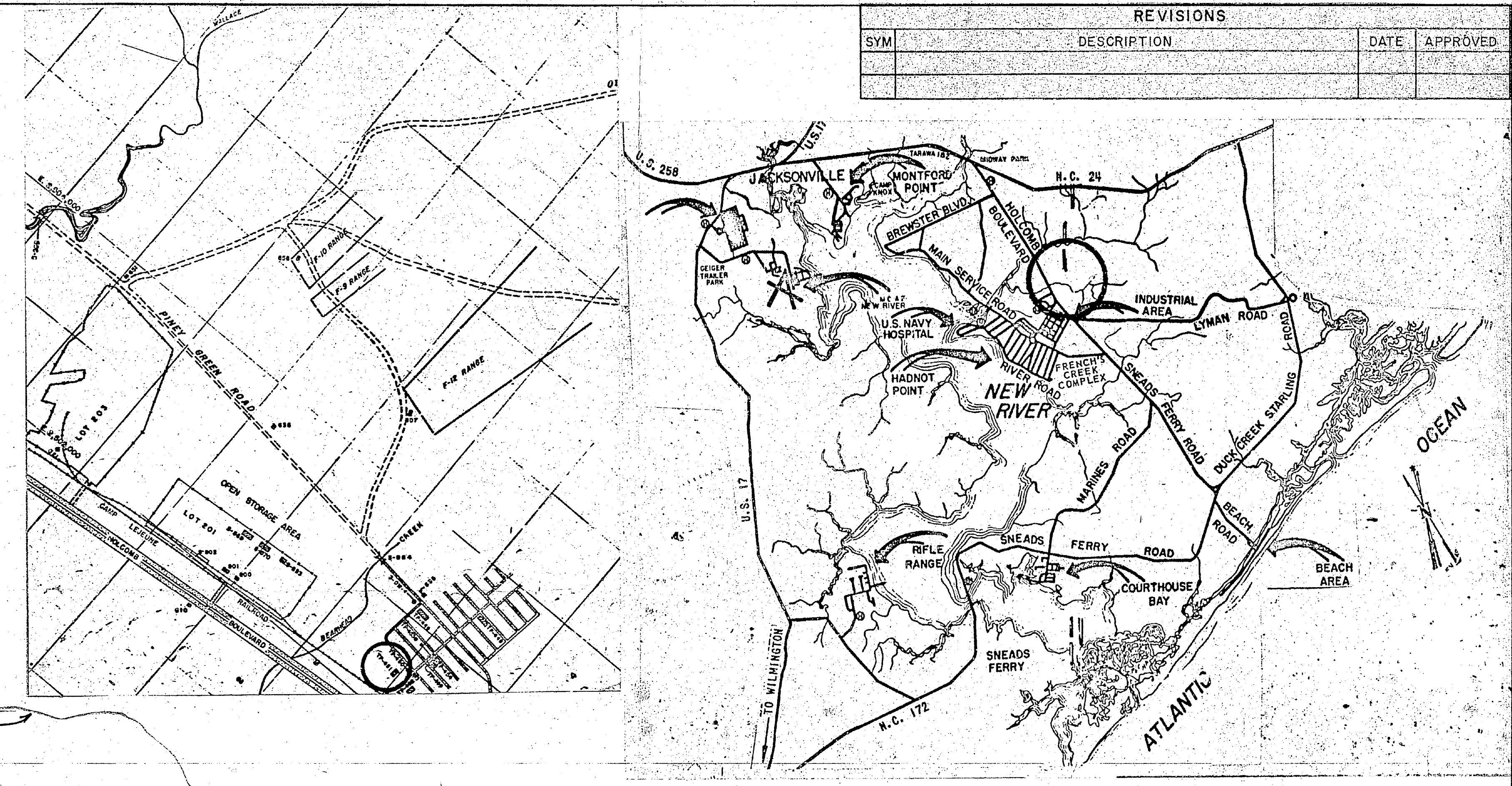
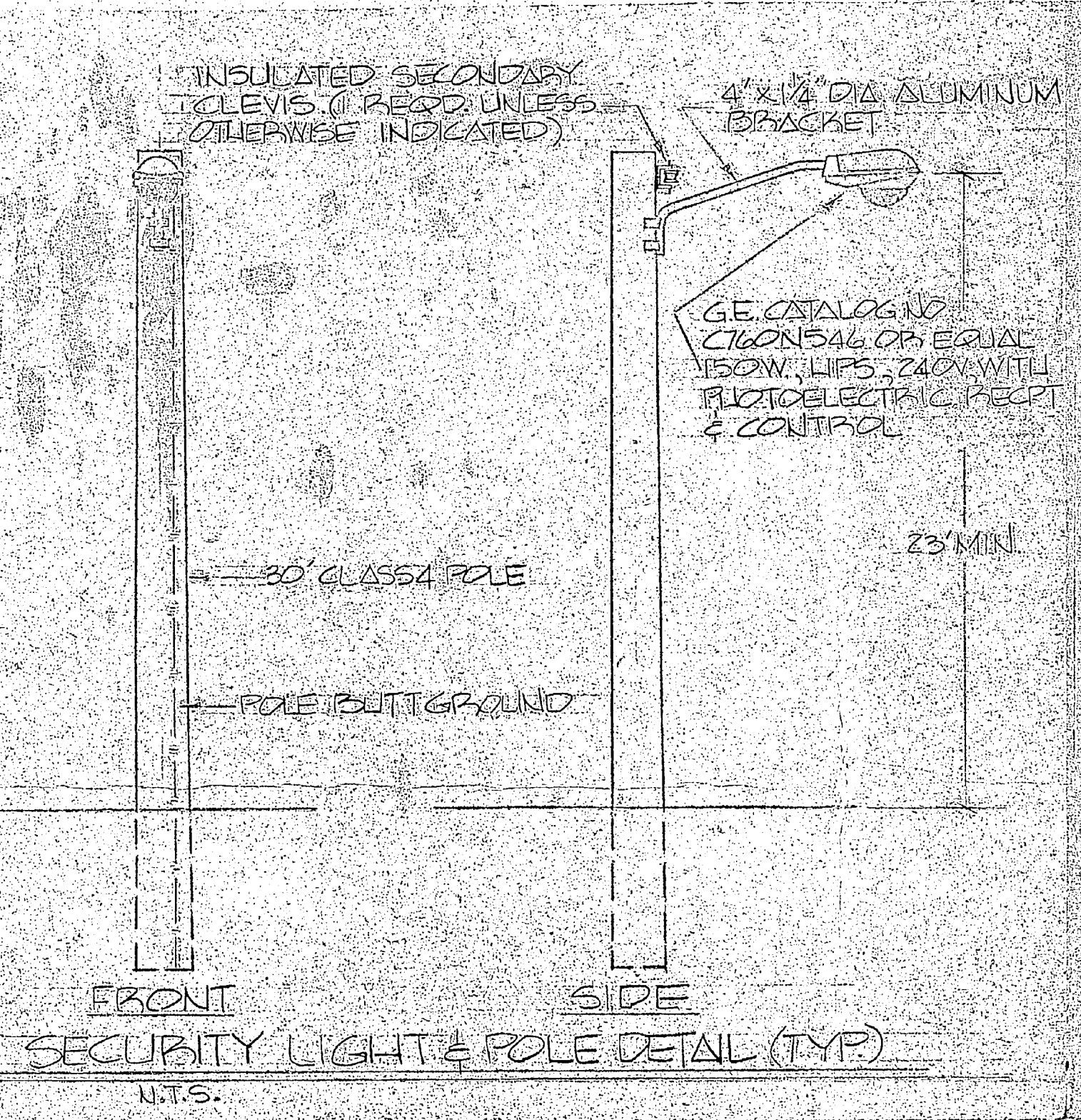
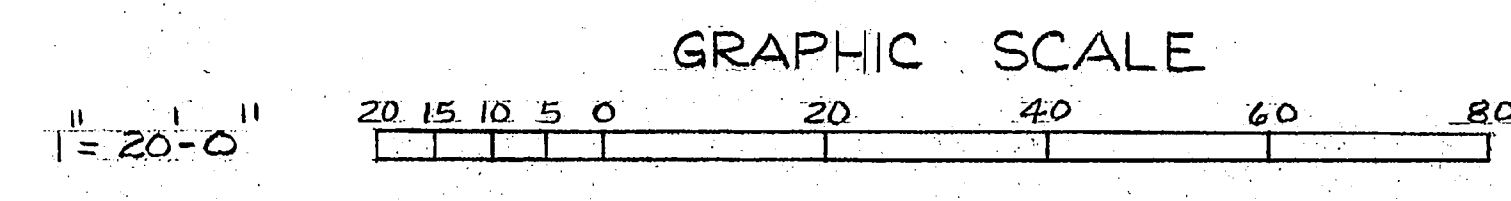


REVISIONS			
SYM	DESCRIPTION	DATE	APPROVED



NOTE
SEE NAVFAC DRAWING NUMBERS 486904 - 486905 & 486906 FOR ERECTION OF PREFAB METAL BLDG. (REFERENCE DRAWINGS.)

- LEGEND**
- X SPOT ELEVATIONS (EXIST)
 - [Hatched Box] NEW SHELL ROCK
 - [Hatched Box] BUILDINGS (NEW & EXIST)
 - X-X NEW FENCE
 - [Hatched Box] NEW CONC PAD
 - NEW 30' CLASS 4 POLE
 - ⊕ NEW SECURITY LIGHT, 150W, HIGH PRESSURE SODIUM, 240V
 - NEW OVERHEAD SECONDARY (TRIPLEX), 2.7/6 CU XLP WITH 1/8\"/>

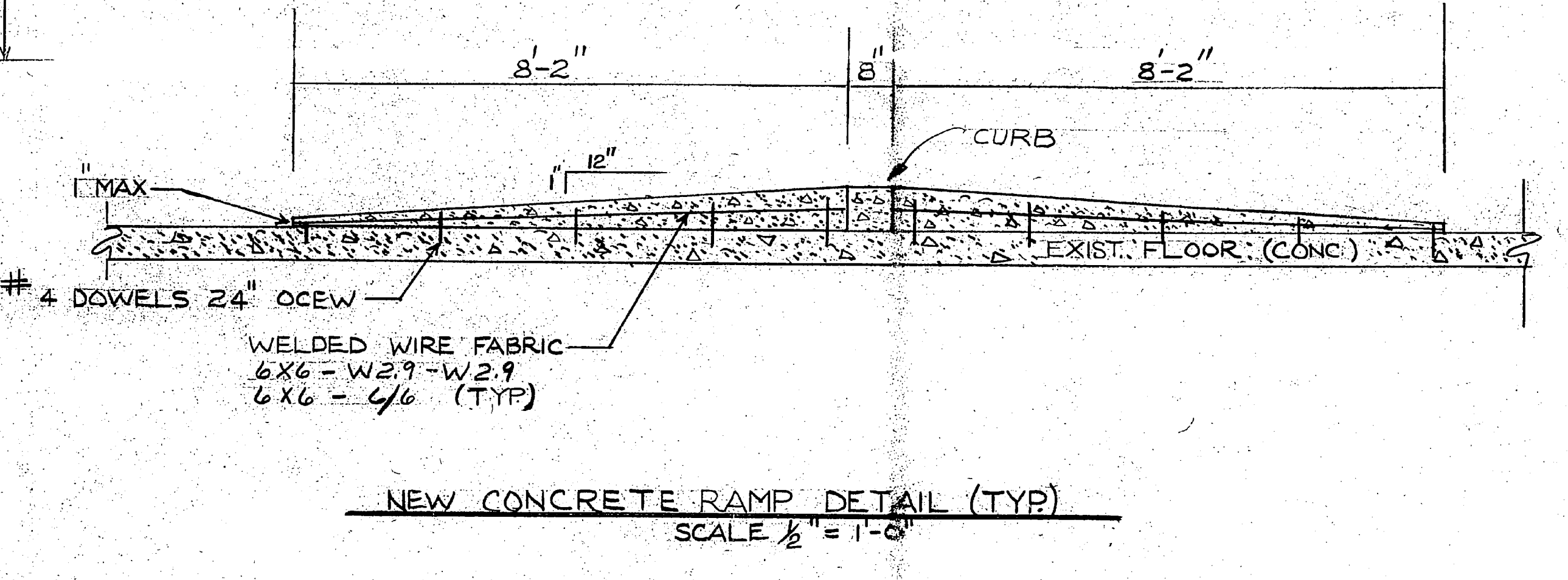
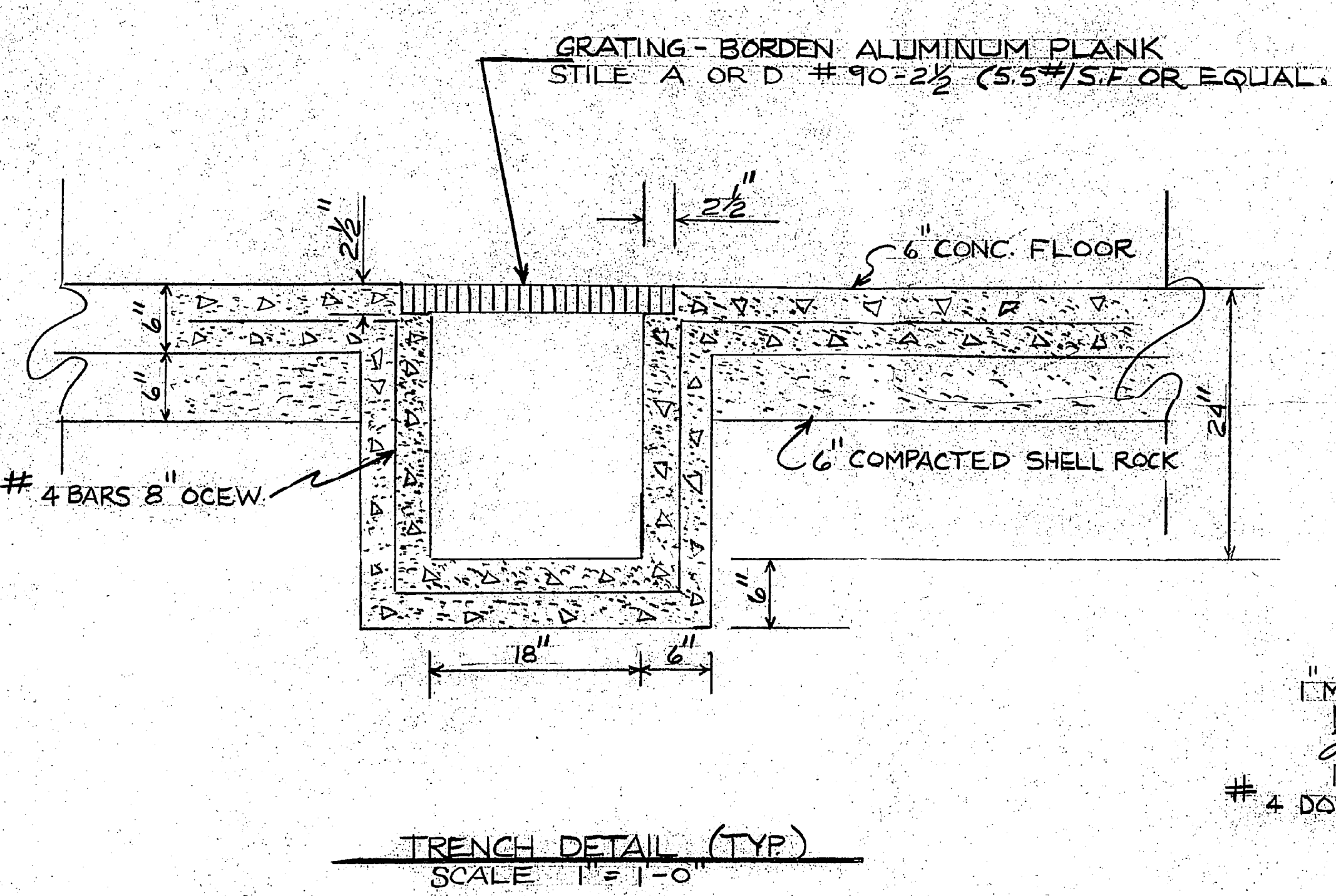
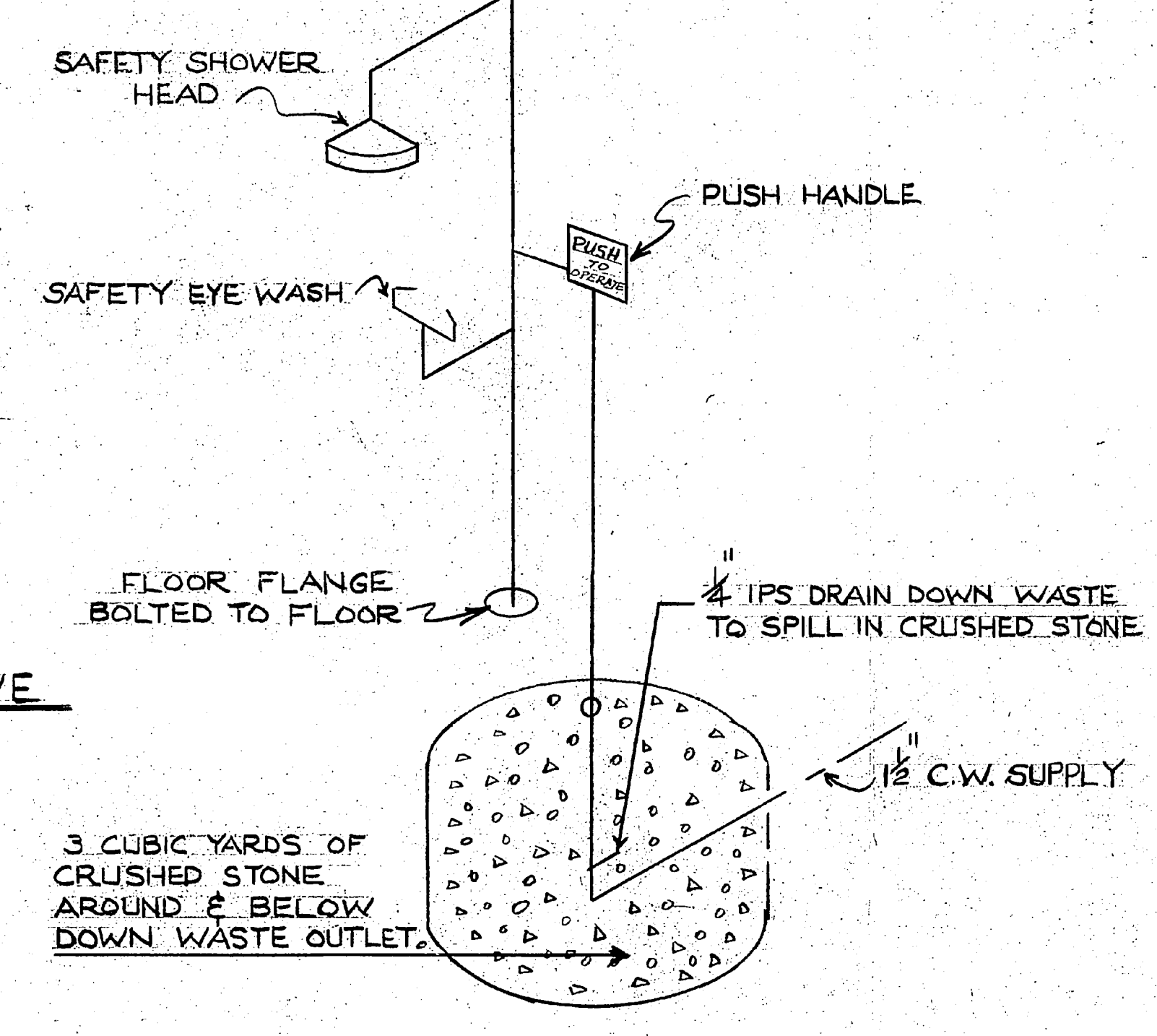
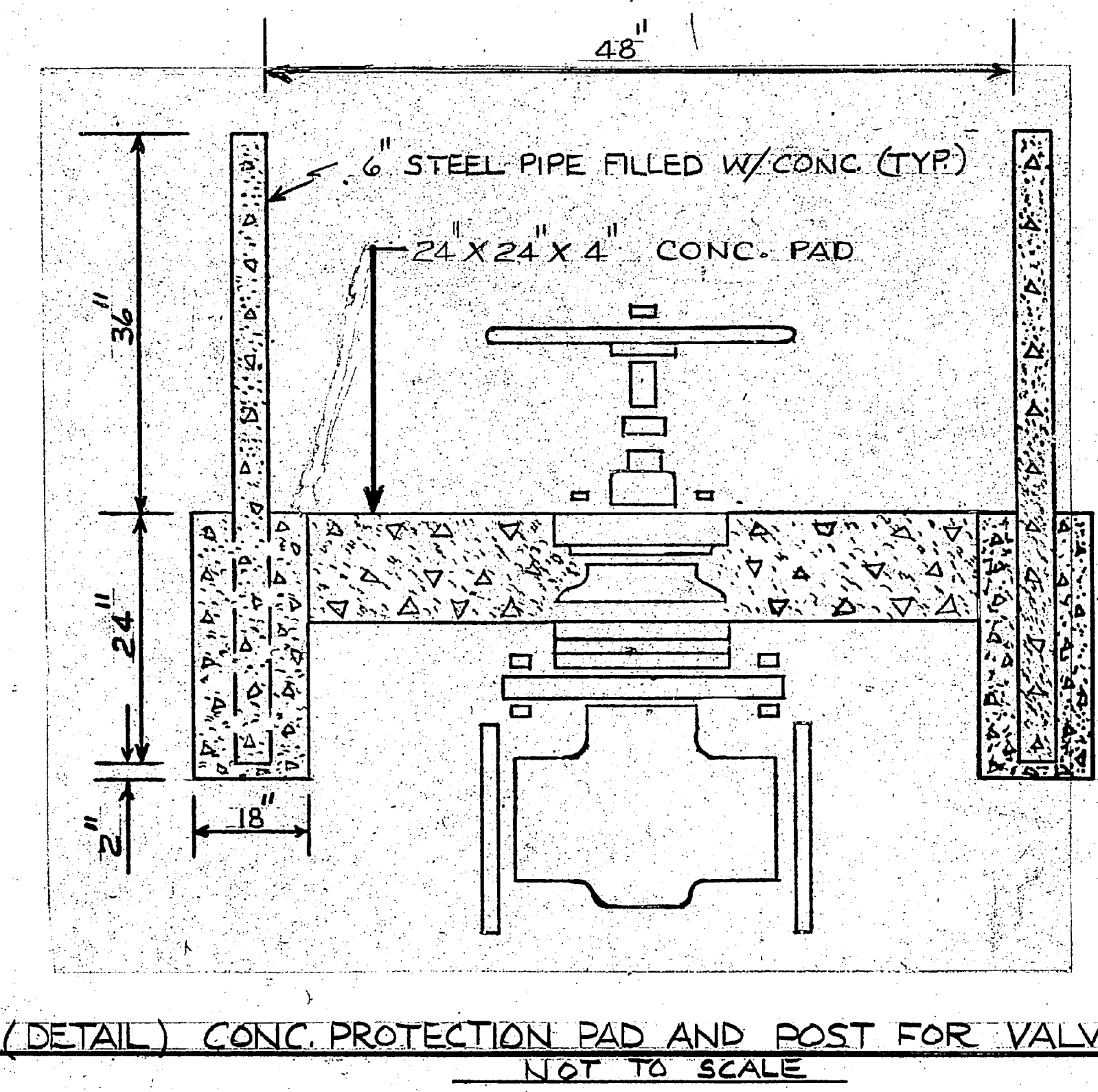
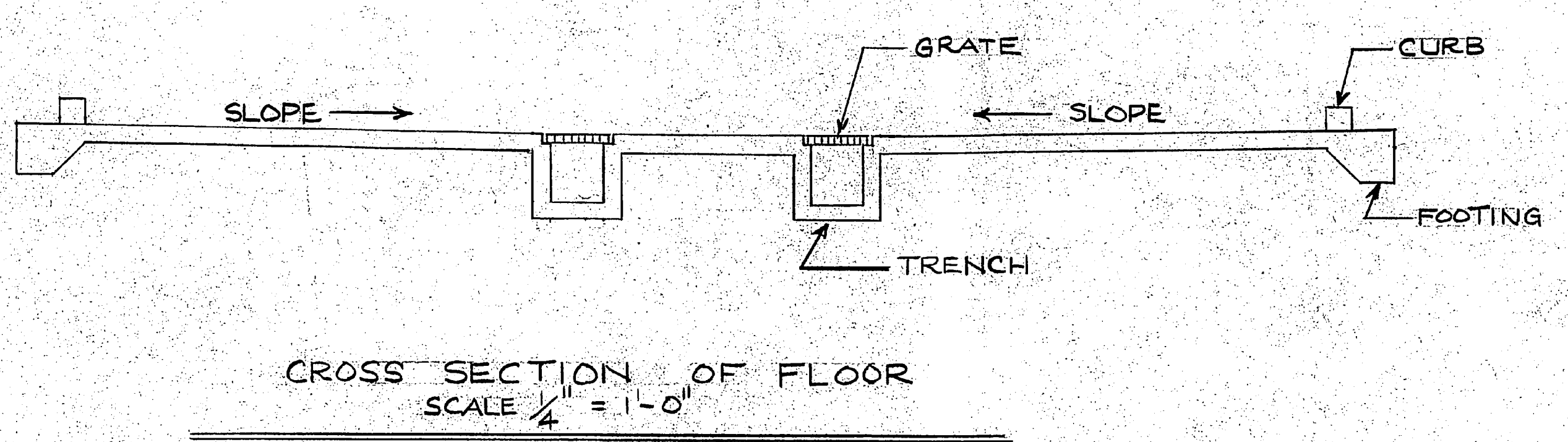
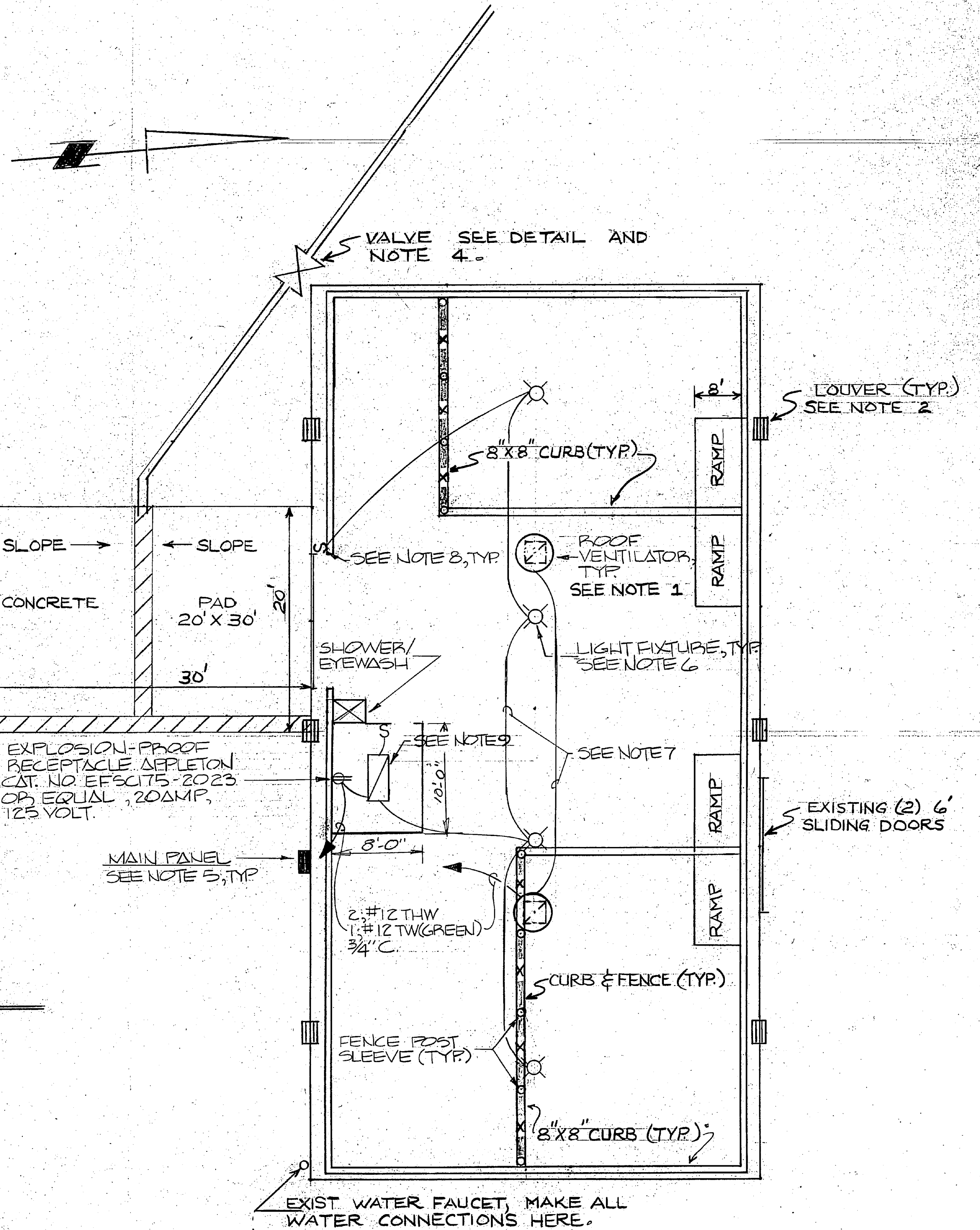
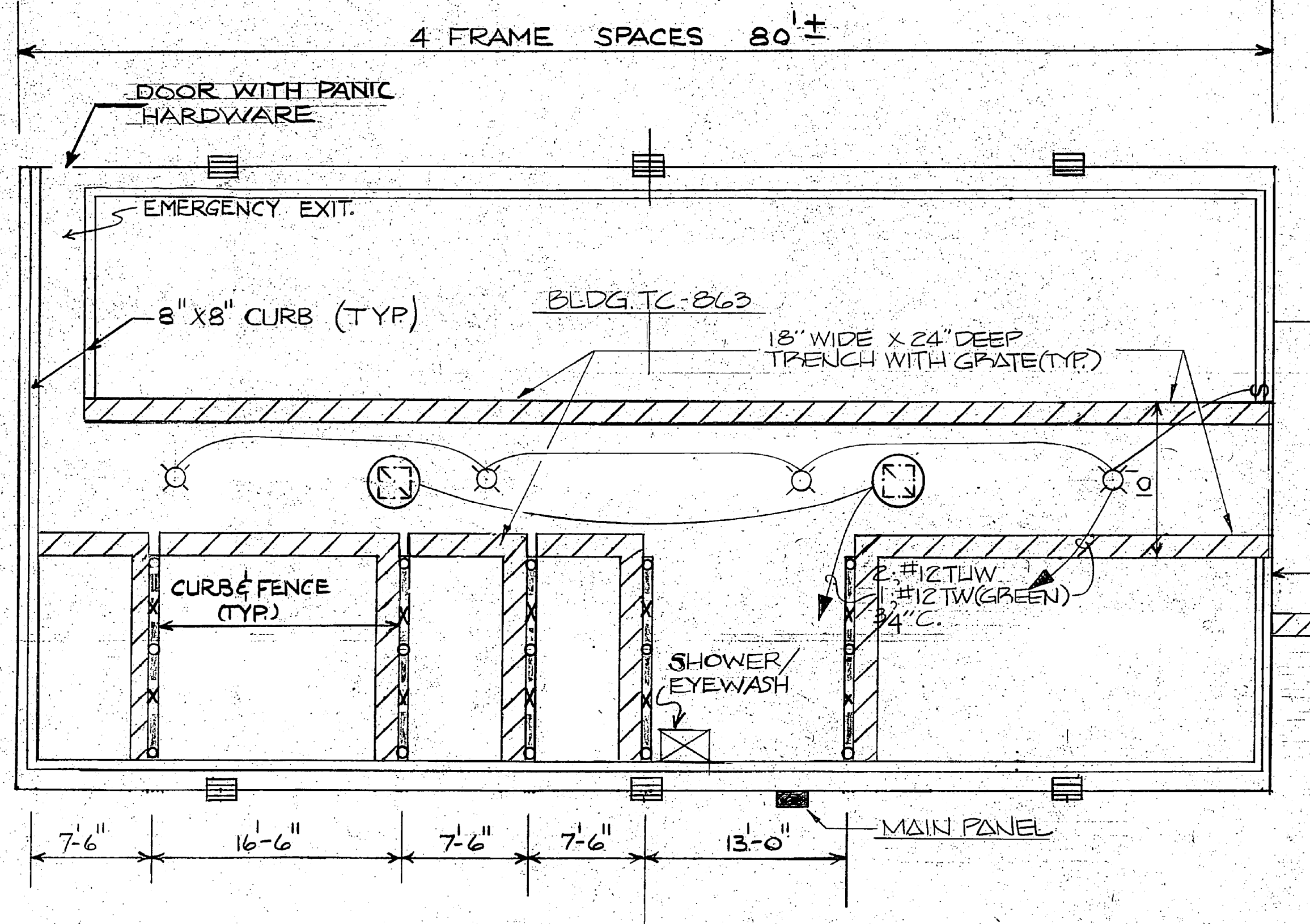
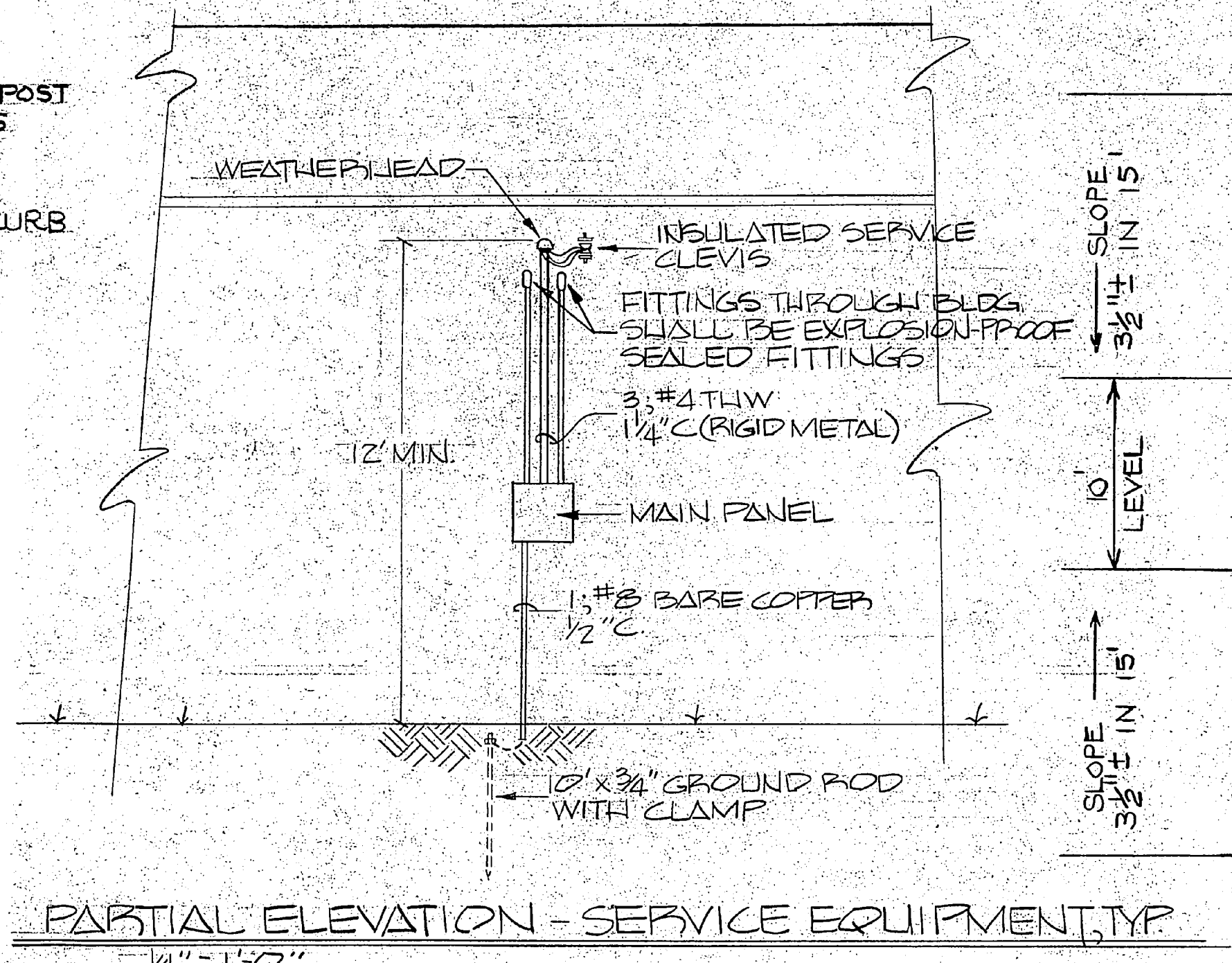
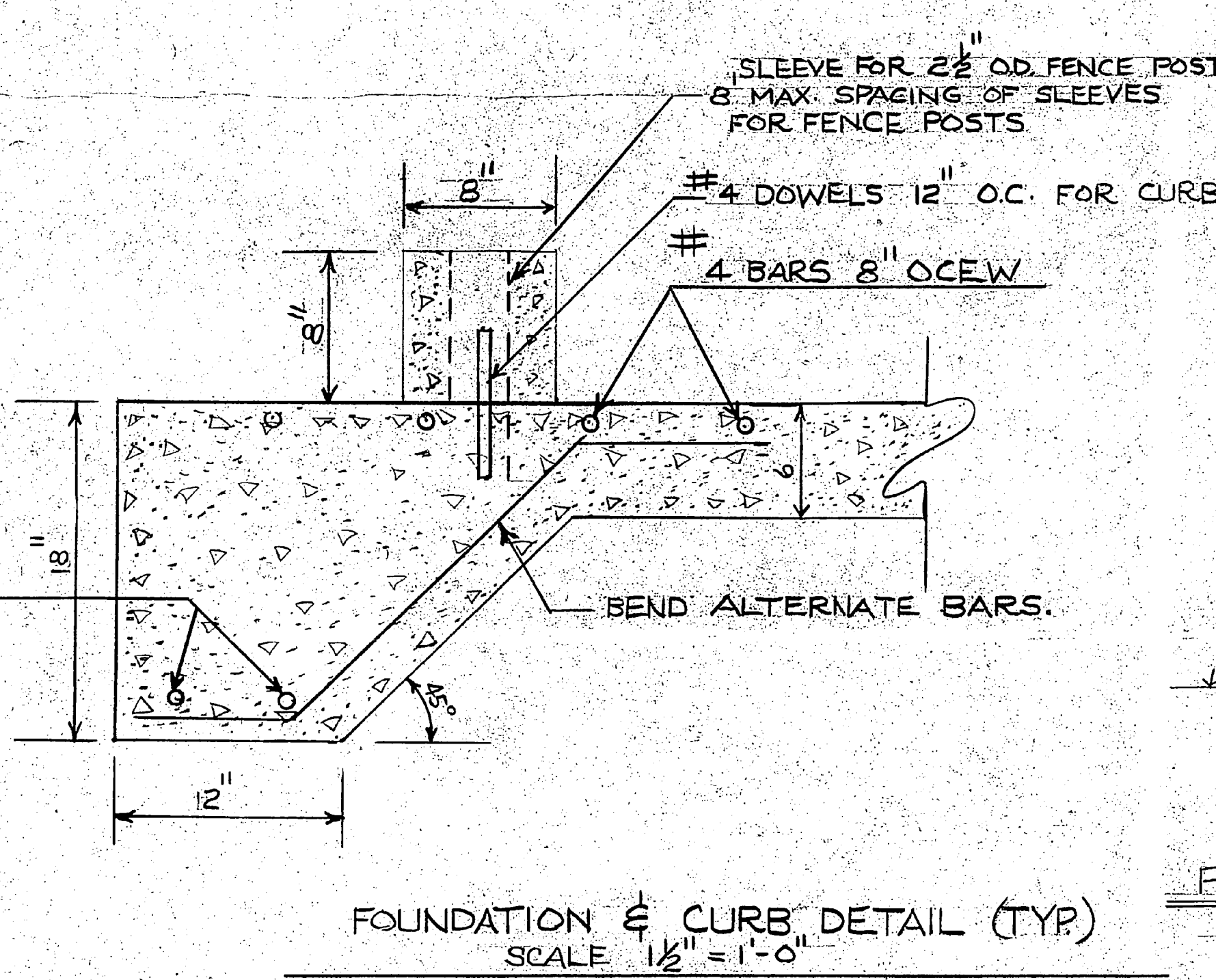
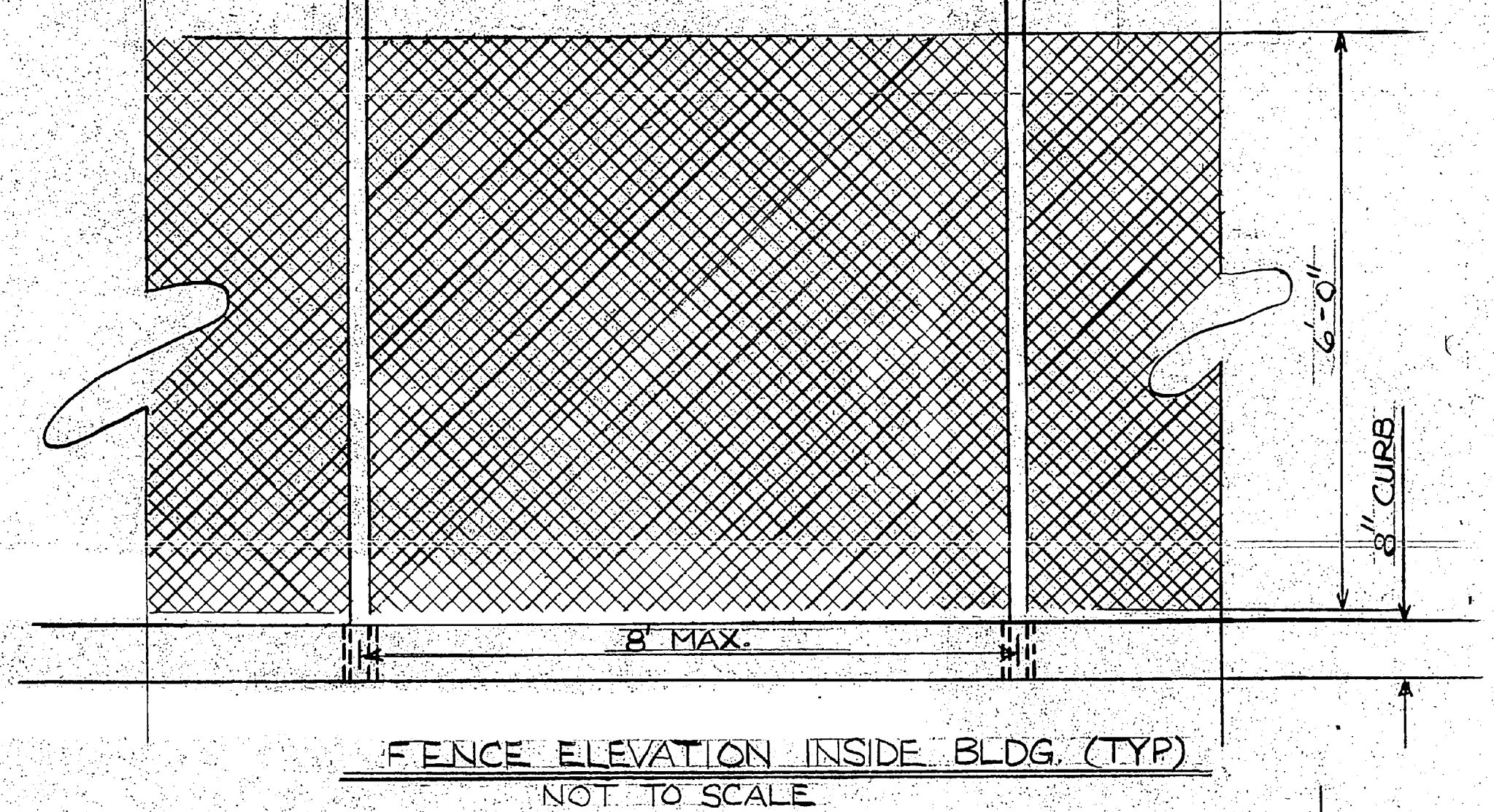
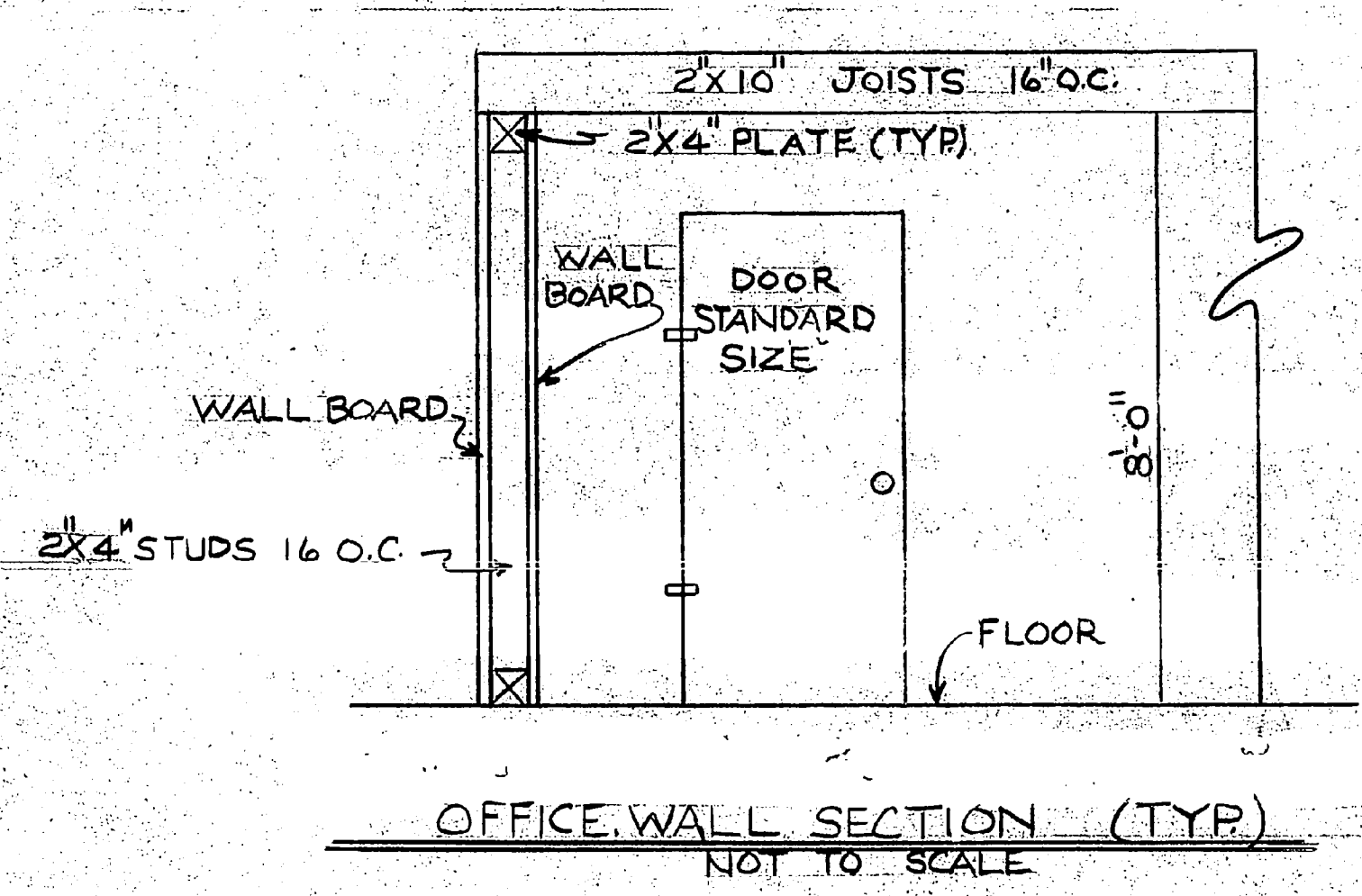


SATISFACTORY TO _____
DATE _____

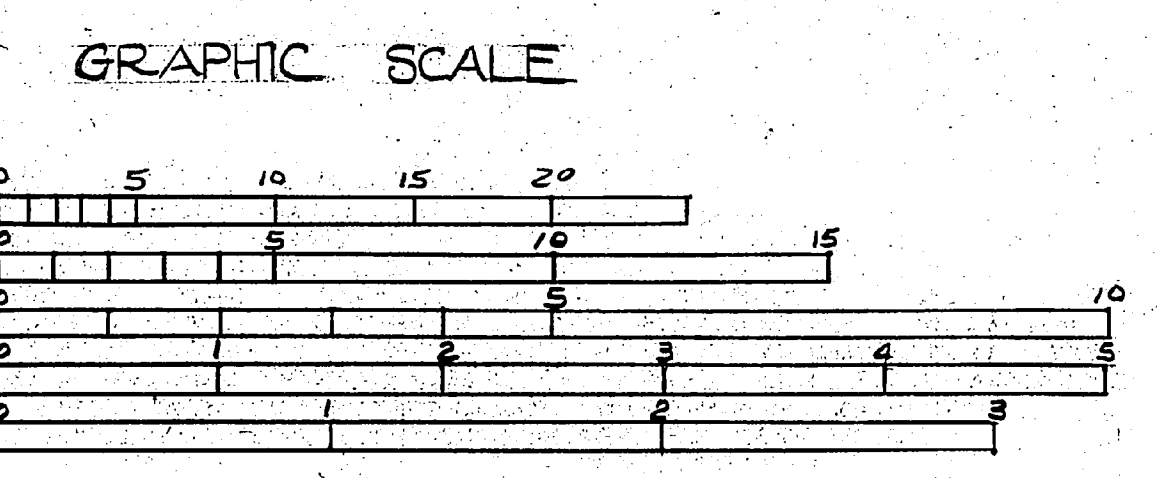
PUBLIC WORKS DEPT MARINE CORPS BASE CAMP LEJEUNE, N.C.	DEPARTMENT OF THE NAVY NAVAL FACILITIES ENGINEERING COMMAND ATLANTIC DIVISION NAVAL STATION MARINE CORPS BASE, CAMP LEJEUNE, N.C.
DESIGNED BY P.M.C. [Signature] DRAWN BY [Signature] CHECKED BY [Signature] DATE 8/7/61	HAZARDOUS WASTE STORAGE SITE PLAN TROOP TRAINING PROJECT
COMMAN. GENERAL [Signature]	SIZE CODE IDENT NO F 80091 4068645
APPROVED [Signature]	CONSTR. CONTR. NO.
FOR COMMANDER, NAVFAC	SCALE GRAPHIC SPEC SHEET 1 OF 2 LANTOIV, DWG NO



REVISIONS			
SYM	DESCRIPTION	DATE	APPROVED



- NOTES
- 1-1LG CENTRIFUGAL POWER ROOF VENTILATOR MODEL CBR 24 OR EQUAL 4650 CFM @ 25" ESP, 660 RPM, 1HP, 240 V.
 - 2-AMERICAN WARMING & VENTILATING, INC. EXTRUDED STATION LOUVER MODEL 3131 ES OR EQUAL SIZE 24" X 18" WITH .18" MESH INSECT SCREEN. LOUVER BOTTOM TO BE 1'-0" ABOVE BLDG. FLOOR.
 - 3-BRADLEY COMBINATION DRENCH SHOWER-EYE WASH UNIT (HAND OPERATED - FROST PROOF) MODEL S1731, OR EQUAL.
 - 4-LOCATE VALVE AS NEAR CORNER OF BLDG. AS PRACTICAL FOR PROTECTION.
 - 5-MAIN PANELS SHALL BE 120AMP, 1 PHASE, 120/240 VOLT, WITH 60 AMP MAIN BREAKER, NUMBER OF SINGLE POLE SPACES SHALL BE 8. PROVIDE 1" 20 AMP/1 POLE AND 1" 20 AMP/2 POLE CIRCUIT BREAKER WITH EACH PANEL. NEMA 3R ENCLOSURE.
 - 6-G.E. FILTER GUARD L13 SERIES LUMINAIRE, CATALOG NO. L1310L 3P E2 OR EQUAL, 100 W. HIGH PRESSURE SODIUM VAPOR, EXPLOSION-PROOF, PENDANT MOUNT, 120 VOLT.
 - 7-ALL CIRCUITS SHALL BE IN RIGID METAL CONDUIT WITH ALL FITTINGS BEING EXPLOSION-PROOF SEALED FITTINGS, TYPE AS SHOWN IN SECTION "I" IN APPLETON CATALOG.
 - 8-ALL LIGHT SWITCHES SHALL BE EXPLOSION-PROOF, 20A, 120 VOLT, TYPE AS SHOWN IN SECTION "I" IN APPLETON CAT.
 - 9-APPLETON CAT NO VP240-118 OR EQUAL EXPLOSION-PROOF FLUORESCENT FIXTURE TWO 40W R5 TUBES (48") CEILING MOUNT TYP.



SATISFACTORY TO: _____
DATE: _____

PUBLIC WORKS DEPT. MARINE CORPS BASE CAMP LEJEUNE, N.C.		DEPARTMENT OF THE NAVY NAVAL FACILITIES ENGINEERING COMMAND ATLANTIC DIVISION MARINE CORPS BASE, CAMP LEJEUNE, N.C.	
DESIGNED BY: [Signature]	DATE: 5/74	SIZE: F	CODE/DEPT NO: 80091
APPROVED BY: [Signature]	DATE: 5/74	HAZARDOUS WASTE STORAGE DETAILS TRAMP TRAINING PROJECT	NAVFAC DRAWING NO: 4068646
FOR COMMANDER, NAVFAC		SCALE: RAMP/C SPEC	SHEET 2 OF 2

