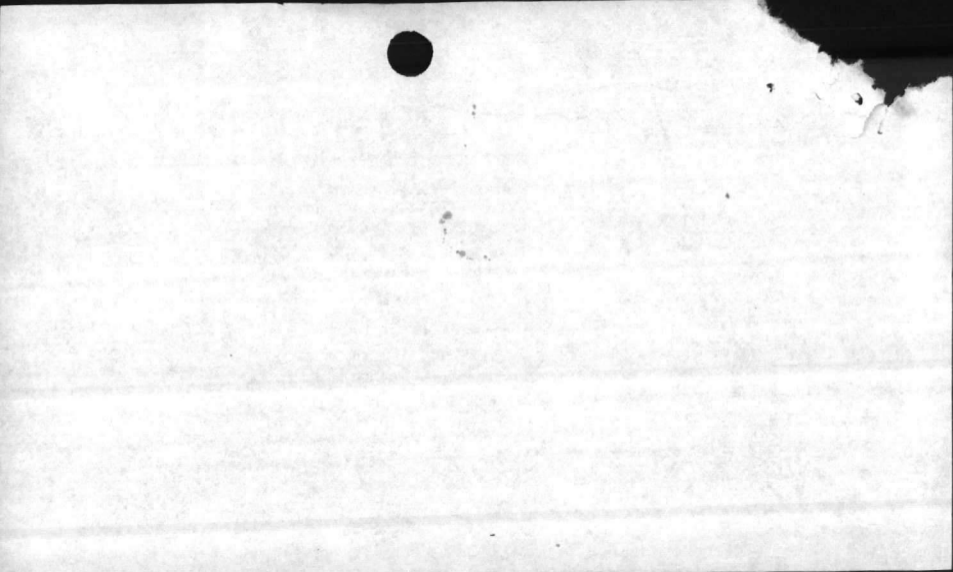


To Danny

PP

*[A large, stylized signature or flourish consisting of several overlapping, sweeping lines.]*



ROUTINE

\*\*\*\*\*  
\* U N C L A S S I F I E D \*  
\*\*\*\*\*

063/06397

PT00231

DDS -  
M.J. Wooten  
File 11000/5  
set up a folder on  
Solid Shield 83  
PAGE 01

B106

RITUZYUW RUCRS65438 0621743-UUUU--RUEBDOA RUEBUOB.

ZNR UUUU

R 022039Z MAR 83

FM CINCLANT NORFOLK VA

TO RUEOLFA/CG FMFLANT

RULYVKA/COMPHIRGKU TWO

INFO RUERDOA/CG MCH CAMP LEJEUNE NC

RUEBDOA/EIGHTH ENGRSPTBN

RULYLKA/COMNAVFACHGKU TWO

RUCBSAA/COMNAV SURFLANT NORFOLK VA

RUCBSAA/CINCLANTFLT NORFOLK VA

RULYSHH/LANTNAVFACENGCOR NORFOLK VA

BT

UNCLAS //NOA2RO//

SUBJ: USE OF AMPHIBIOUS ASSAULT BULK FUEL SYSTEM (AABFS) FOR SOLID SHIELD 83 (SS-83)

- A. COMLANTNAVFACENGCOR LTR SER C-3 OF 11 FEB 1983 (NOTAL)
- B. CG SECOND FSSG LTR 42/RDH/VAO 11000 OF 14 DEC 1982 (NOTAL)
- C. CINCLANT LTR SER 00021 OF 25 FEB 1983 (NOTAL)

1. SUMMARY. THIS MESSAGE CONTAINS THE ENVIRONMENTAL CONSIDERATIONS AND MITIGATING MEASURES THAT MUST BE ADHERED TO DURING AABFS USE FOR SS-83. FMFLANT IS TO FUND NONPERMEABLE

PAGE 02 RUCRS65438 UNCLAS

LINERS AND PHIRGKU TWO IS REQUESTED TO MAKE DISTRIBUTION OF AABFS PRELIMINARY ENVIRONMENTAL ASSESSMENT (PEA) TO EXERCISE COMPONENTS INVOLVED IN DEPLOYING AND USING THE AABFS. REF C REQUESTED LANTNAVFACENGCOR TO PREPARE A PEA FOR THE ENTIRE EXERCISE AND TO COORDINATE WITH APPROPRIATE FEDERAL, STATE, AND LOCAL ENVIRONMENTAL AGENCIES. PEA FOR EXERCISE WILL INCLUDE AABFS PEA.

2. BY REF A LANTNAVFACENGCOR PROVIDED A PRELIMINARY ENVIRONMENTAL ASSESSMENT FOR USE OF THE AABFS IN SS-83. THIS ASSESSMENT ADDRESSES THE ENTIRE SYSTEM DEPLOYMENT. REF B SUBMITTED A PEA THAT ADDRESSED ONLY THE SHORE SIDE DEPLOYMENT.

3. IN ORDER TO MINIMIZE ENVIRONMENTAL IMPACT THE FINAL PEA CONTAINS THE FOLLOWING MITIGATING MEASURES:

A. FOR AABFS

(1) PRIOR TO PUMPING OPERATIONS THE AABFS IS SUBJECT TO TWO SEPARATE AIR PRESSURE TESTS TO ENSURE SYSTEM INTEGRITY (A PRE-SAIL CHECK AND AGAIN IMMEDIATELY PRIOR TO PUMPING FUEL).

(2) FUEL WILL BE PUMPED DURING HOURS OF DAYLIGHT AND UNDER CONDITIONS CONDUCTIVE TO CLEAN-UP OPERATIONS SHOULD A SPILL OCCUR.

PAGE 03 RUCRS65438 UNCLAS

(3) ALL FUEL WILL BE PUMPED ASHORE DURING A ONE TIME

ROUTINE

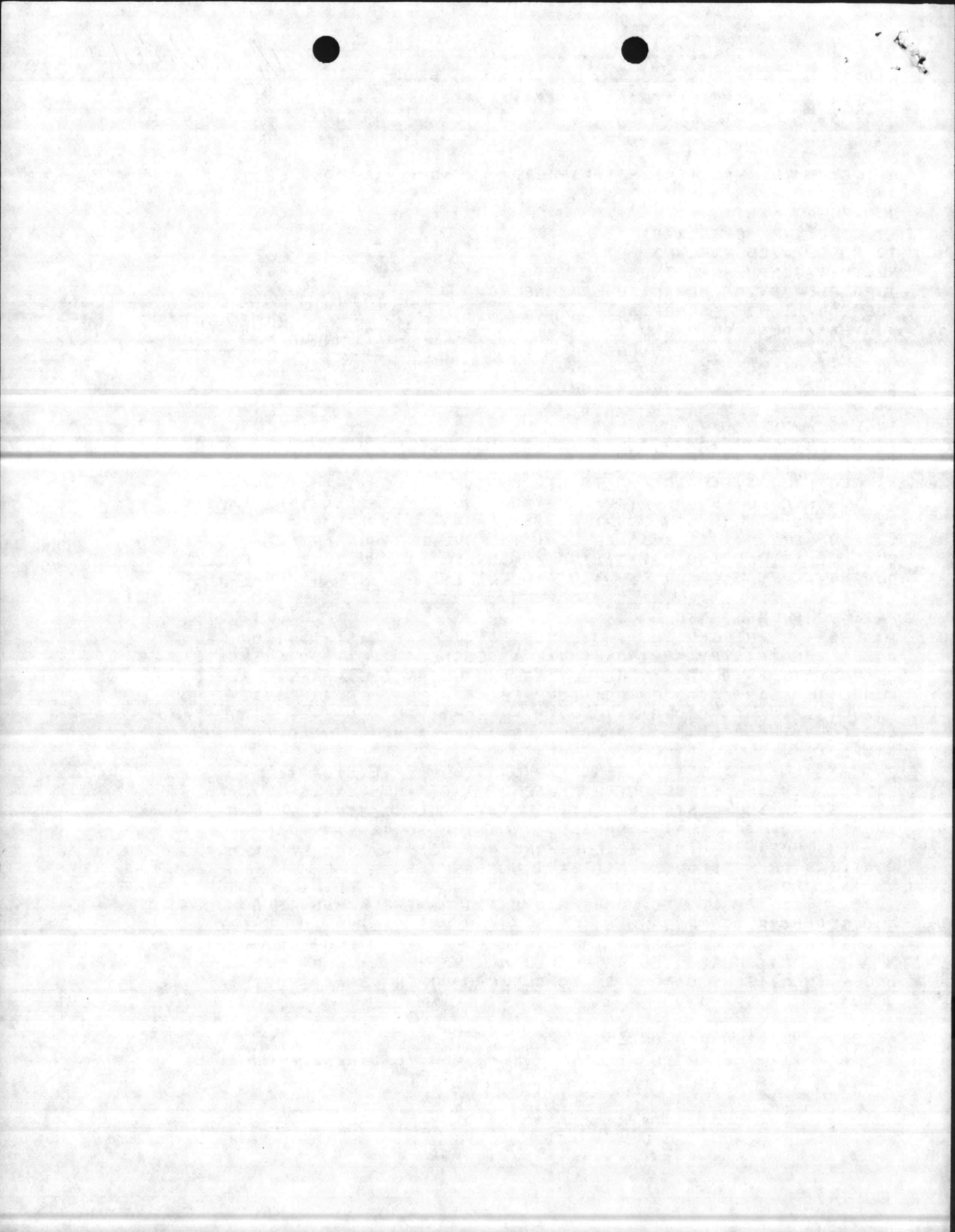
\*\*\*\*\*  
\* U N C L A S S I F I E D \*  
\*\*\*\*\*

02

77

02 MAR 83

// COMM NOTE: SSIC DOES NOT APPLY  
IN GO 2300.2, ROUTED BY BASIC/~~SSIC~~  
SSIC 04000 //



ROUTINE

\*\*\*\*\*  
\* U N C L A S S I F I E D \*  
\*\*\*\*\*

063/0640Z

PT00231

PAGE 02

PUMPING OPERATION (DELIVERY TIME IS 3-1/2 HOURS APPROXIMATELY).

(4) AARFS FUEL TRANSPORT LINE WILL BE LAID ALONG A CAUSEWAY VICE FLOATING IN THE SEA. THE HOSE WILL BE SANDBAGGED ALONG THE CAUSEWAY TO CONTAIN ANY SPILLS.

(5) POSITIVE COMMUNICATIONS WILL BE MAINTAINED. ANY COMMUNICATION INTERRUPTION WILL BE CONSIDERED A FUEL SPILLAGE AND PUMPING WILL BE STOPPED.

(6) THE PORTION OF THE TRANSFER THAT WILL TRANSVERSE THE BEACH LINE WILL HAVE BERMS ALONG EACH SIDE OF THE LINE AND AT THE GATE WHERE CONNECTION IS MADE WITH THE SEAWARD LINE.

(7) THE AARFS WILL BE UNDER CONSTANT OBSERVATION DURING TRANSFER OPERATIONS.

(8) THE AMOUNT OF FUEL CONTAINED IN THE TRANSFER LINE AT A GIVEN TIME IS ROUGHLY 1,500 GALLONS.

- A. 6" LINE X 1,000 FEET (SHIP-TO-SHORE)
- B. 196.35 CUBIC FEET LINE CAPACITY
- C. 196.35 CUBIC FEET X 7.48 GALLONS/CUBIC FEET OR 1,469 GALLONS (APPROXIMATELY).

THEREFORE, "WORST CASE" SPILL IN THE WATER WOULD BE LESS THAN

PAGE 04 RUCRSGG5438 UNCLAS  
1,500 GALLONS.

R. FOR AARFS/TANK FARM (ASHORE) COMPONENTS.

(1) EACH OF THE 20,000 GALLON COLLAPSIBLE FUEL BLADDERS WILL BE INDIVIDUALLY BERMED WITH EARTH. THE BERM WILL BE CAPABLE OF HOLDING A MINIMUM OF 1-1/2 TIMES THE AMOUNT OF FUEL STORED IN THE INDIVIDUAL FUEL BLADDER. A NONPERMEABLE LINER WILL BE PLACED UNDER EACH FUEL TANK AND UNDER EACH MAJOR COMPONENT OF THE SYSTEM. THE FUEL DISPENSING POINT WILL BE PROTECTED BY INSTALLATION OF DRIP CATCH CANS UNDER EACH FUEL DISPENSING NOZZLE AND BY INSTALLATION OF PROTECTIVE BEACH MATTING. FUEL LINES CROSSING AN EXERCISE ROAD, UNDER CONTROLLED TRAFFIC, WILL BE PROTECTED BY NESTABLE CULVERT.

(2) SITE LOCATION REQUIREMENTS. ALL AREAS WITHIN THE PROPOSED TANK FARM SITE ARE FREE OF VEGETATION AND DEBRIS. LEVEL TERRAIN WILL BE UTILIZED FOR THE TANK FARM. SURROUNDING TERRAIN IS HIGH LEVEL GROUND WHICH WOULD ASSIST IN CONTAINMENT SHOULD A SPILL OCCUR. INITIAL SITE PREPARATION WILL PROVIDE A STOCKPILE OF SOIL FOR ADDITIONAL SPILL CONTAINMENT BERMS. BERM SOIL WILL COME FROM STOCKPILED DREDGE SPOILS LOCATED NEAR THE PROPOSED SITE. A SMALL DOZER/SCOOPER LOADER WILL BE ON THE SITE AT ALL

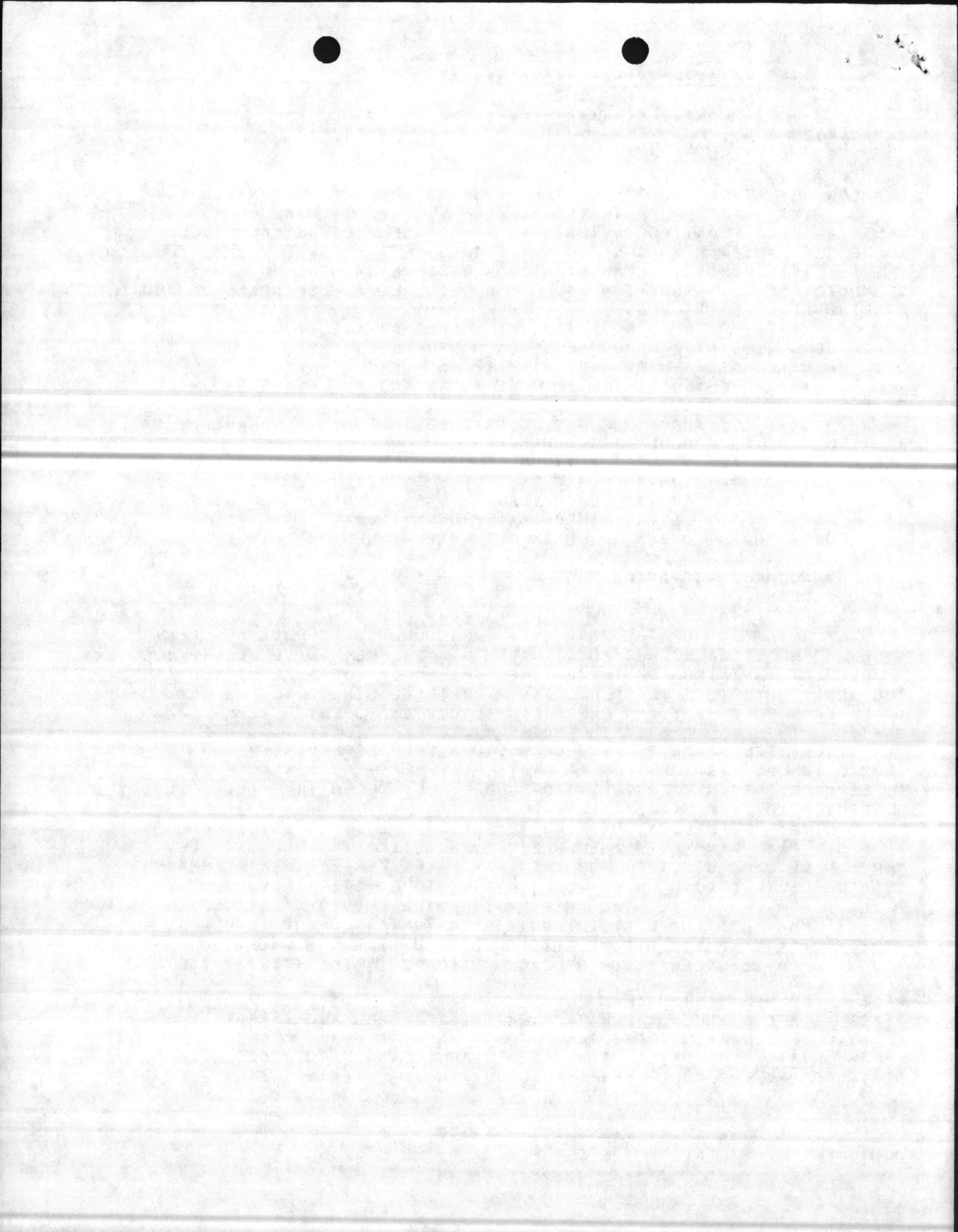
PAGE 05 RUCRSGG5438 UNCLAS

TIMES AS A CONTINGENCY FOR PREPARATION OF BERMS AND IMMEDIATE REMOVAL OF CONTAMINATED SOIL.

(3) PERSONNEL. TRAINED PERSONNEL AND HAND TOOLS WILL BE STATIONED AT THE FUEL FARM THROUGHOUT THE OPERATIONS ALONG WITH

ROUTINE

\*\*\*\*\*  
\* U N C L A S S I F I E D \*  
\*\*\*\*\*



ROUTINE

\*\*\*\*\*  
\* U N C L A S S I F I E D \*  
\*\*\*\*\*

063/0640Z

PT00251

PAGE 03

SENTRY PERSONNEL TO PREVENT VEHICLES FROM CROSSING FUEL LINES.

(4) TRANSFER. NO FUEL WILL BE PUMPED ACROSS THE INTRACOASTAL WATERWAY (ICW). ALL FUEL TRANSFER ACROSS THE ICW WILL BE ACCOMPLISHED BY TRUCKING.

C. REPORTING SPILLS. STRICT COMPLIANCE WITH THE PROCEDURES FOR SPILL REPORTING, CONTAINMENT AND CLEANUP AS DELINEATED BY MCB, CAMP LEJEUNE ORDER 11090.1B WILL BE ENFORCED.

4. THE ABOVE MEASURES MUST BE ADHERED TO IN ORDER TO UTILIZE THE AABFS DURING THE EXERCISE.

5. FUNDS FOR THE NONPERMEABLE LINERS ARE TO BE SUPPLIED BY FMFLANT OR SUBORDINATES.

6. PHIRGRU TWO IS REQUESTED TO DISTRIBUTE COPIES OF THE AABFS PEA TO THOSE COMPONENTS INVOLVED IN DEPLOYING AND USING THE AABFS DURING THE EXERCISE.

7. BY REF C LANTNAVFACENCOM WAS REQUESTED TO PREPARE A PEA FOR SOLID SHIELD #3 BY UPDATING THE 1981 EDITION WITH INFORMATION

PAGE 06 RUCRS665438 UNCLAS

RECEIVED FROM COMPONENTS PARTICIPATING IN THE 83 EXERCISE. THE PEA IS TO BE COORDINATED WITH APPROPRIATE FEDERAL, STATE, AND LOCAL ENVIRONMENTAL AGENCIES.

BT

#5438

NNNN

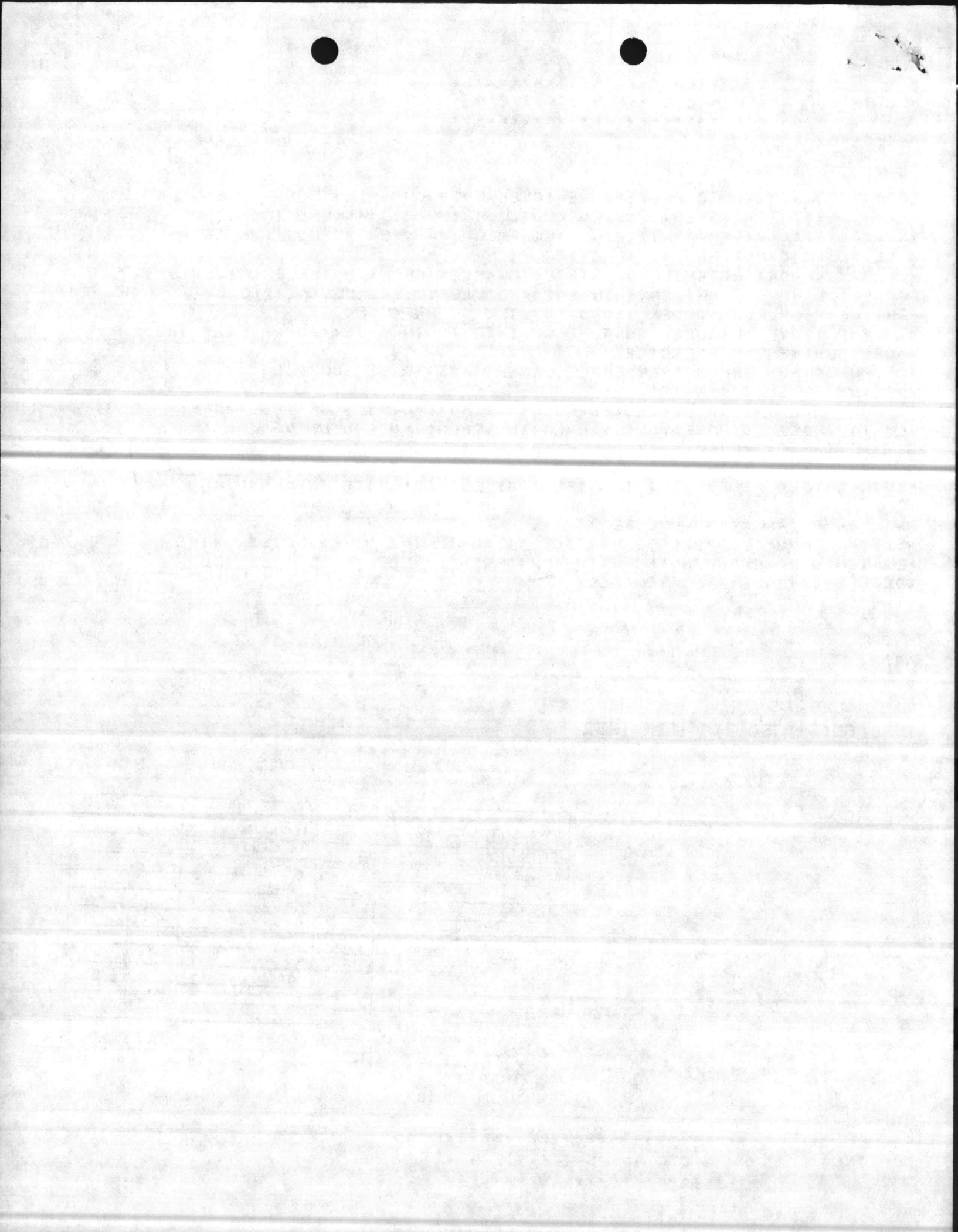
INFO|BLOG|DSSC|BTMO|FSMO|EE|

	ACT	INFO		ACT	INFO
ACofS, LOG			HP COM		
SUPMGMT O			TT COM		
OPNS OFF			DSSC		
LOG CH		<i>sub</i>	TM		
ADM			PRIG		
SUPSUPT			BPC		
SUPANAL			CENTR		
MAINSVSUPT			LDRY		
BUDGET			MT		
FOOD					
BVET					

*Copies to  
Maj 2/1  
JA*

ROUTINE

\*\*\*\*\*  
\* U N C L A S S I F I E D \*  
\*\*\*\*\*

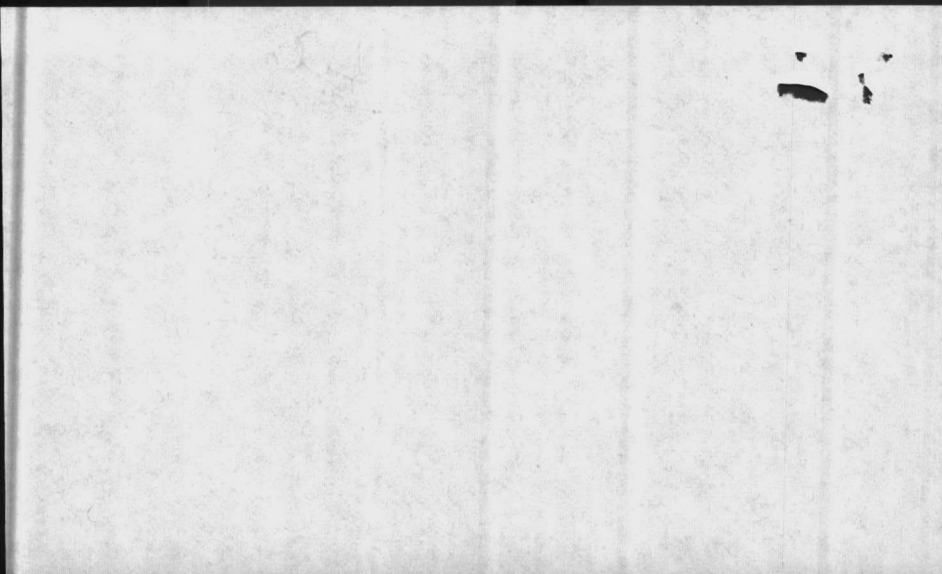




file

MR Wooten

Your copy. Pls make sure  
your people are aware we have  
a lot of different unit aboard  
so you may hear from ones we  
have never delt with before  
and may not be used to  
our way of doing things  
9/9/01



ROUTINE

\*\*\*\*\*  
\* UNCLASSIFIED \*  
\*\*\*\*\*

113/0856Z

PT002??

PAGE 01

RTTU7YUW RHCJS GG6555 1122138-UUUU--RUEBDOA RUEBDOR RUEBDOD.  
ZNR UUUUU  
R 222138Z APR 83  
FM CG FMFLANT  
TO RUEBDOO/CG SECOND MARDIV  
RUCLFCJ/CG SECOND MAW  
RUEBDOR/CG SECOND FSSG  
RULYOWA/CG FOURTH MAR  
RUCIPFT/CDR101STARNDIV (AIRASLT) FT CAMPBELL KY  
INFO RUEBDOA/CG MCR CAMP LEJEUNE NC

BT  
UNCLAS //NO4000//  
SUBJ: ENVIRONMENTAL PROTECTION MEASURES DURING SOLID SHIELD 83  
A. II MAF OPOD 2083 (SOLID SHIELD 83)  
B. CG MCR CAMP LEJEUNE NC 112015Z APR 83 PASEP  
1. IN ADDITION TO GUIDANCE CONTAINED REF A REQ ADHERE TO MEASURES  
OUTLINED REF B WHICH ARE REITERATED HEREIN:  
REFERENCE - CAMP LEJEUNE MARINE CORPS BASE ORDERS:  
A. RO 11015.6  
B. RO 11090.18  
C. RO 6240.5  
TEXT. A. GENERAL.

PAGE 02 RHCJSG 66555 UNCLAS

1. USE EXISTING MAIN ROADS AND TRAILS TO THE MAXIMUM EXTENT  
TACTICALLY FEASIBLE TO CONSIDERABLY REDUCE VEHICULAR DAMAGE TO  
WETLANDS AND WILDLIFE HABITAT. VEHICULAR TRAFFIC OVER THE FRONTAL  
DUNES OF ONSLOW BEACH IS PROHIBITED.

2. THE HABITAT LOCATIONS OF THE REDCOCKADED WOODPECKER, AN ENDAN-  
GERED SPECIES, ARE SPECIFIED IN REF A. UNITS ESTABLISHING CP'S AND  
BIVOUAC AREAS WITHIN THE BUFFER ZONES WILL OBSERVE THE AUTHORIZED  
PROCEDURES OF REF A.

B. SPILL PREVENTION, CONTAINMENT AND CLEAN-UP

1. DISCHARGE OF OILS OR OTHER HAZARDOUS MATERIALS ON OR  
INTO THE GROUNDS AND WATERS IS PROHIBITED PER REF B.

2. IN THE EVENT OF A SPILL (MORE THAN ONE GALLON):

A. CALL BASE FIRE DEPT, EXT 3333 ON BASE OR 451-3333  
FROM OFF-BASE.

B. PERSONNEL ON SITE SHALL ERECT A SAND OR EARTH BERM  
TO CONTAIN SPILLS ON THE GROUND.

C. KEEP UNAUTHORIZED PERSONNEL OUT OF THE AREA.

D. PROVIDE PERSONNEL AND EQUIPMENT SUPPORT FOR SPILL  
CONTAINMENT AND CLEAN-UP AS REQUESTED BY BASE SPILL RESPONSE ON-SCENE  
COORDINATOR.

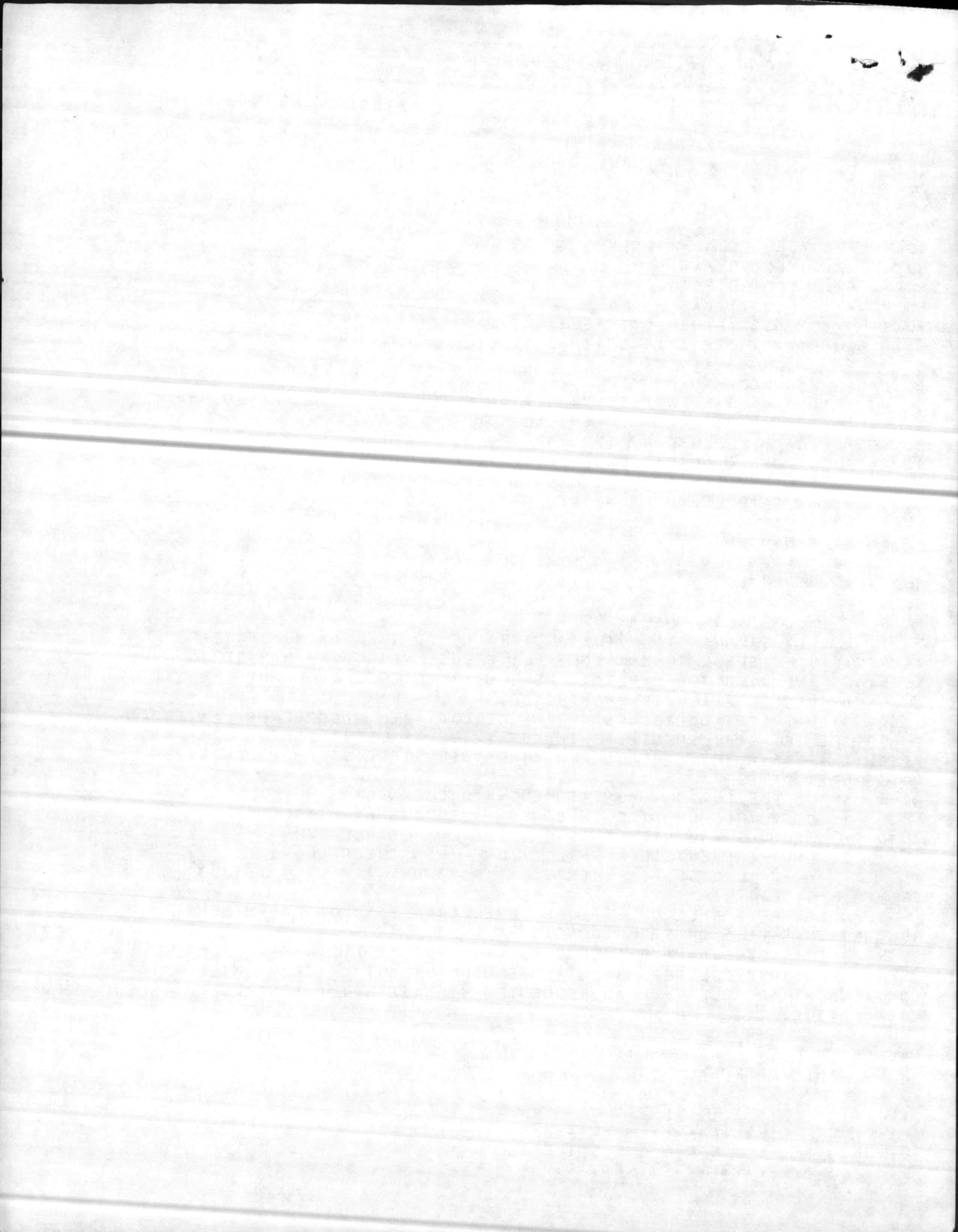
PAGE 03 RHCJSG 66555 UNCLAS

C. WASTE DISPOSAL

ROUTINE

\*\*\*\*\*  
\* UNCLASSIFIED \*  
\*\*\*\*\*

38Z ADD 02



ROUTINE

\*\*\*\*\*  
\* U N C L A S S I F I E D \*  
\*\*\*\*\*

11 3/08 56 Z

PT00222

PAGE 02

1. BURYING OF REFUSE AND DERRIS IN THE FIELD IS PROHIBITED. UNITS WILL COLLECT SOLID WASTE AND TRANSPORT TO THE BASE LANDFILL.

2. FIELD MESS WASTE WATER WILL BE COLLECTED IN A TAM B2130 TANK, FABRIC, 3,000 GAL. CALL EXT. 3001/3002 FOR PUMPING OF TANKS BY BASE MAINTENANCE.

3. FIELD SHOWER WASTE WATER WILL REQUIRE SOAKAGE PIT. SITE APPROVAL OF SHOWER FACILITIES IS REQUIRED PRIOR TO THEIR BEING PLACED IN OPERATION. CALL BASE ENVIRONMENTAL ENGINEER, EXT. 3034/2544 FOR SITE APPROVAL.

D. SANITARY WASTE WILL BE DISPOSED OF VIA THE USE OF PORT-A-JOHN'S THROUGHOUT THE DURATION OF THE EXERCISE. FOR SERVICING, CALL BASE LOGISTICS, EXT. 5962/5520.

E. FIRE PREVENTION AND FIRE FIGHTING

1. THE BURNING OF DERRIS IN THE FIELD IS STRICTLY PROHIBITED.

2. REPORT ALL FIRES TO THE BASE FIRE DEPT AT EXT. 3333,

ON BASE OR 451-3333 FROM OFF-BASE.

F. FIELD VEHICLE MAINTENANCE

1. ALL WASTE POL PRODUCTS WILL BE STORED IN SUITABLE CONTAINERS AND DISPOSAL INSTRUCTIONS WILL BE OBTAINED FROM THE UNIT

PAGE 04 RMCJSG 66555 UNCLAS

S-4.

2. USE DRIP PANS AND GROUND CLOTHS DURING OIL CHANGING AND FUELING OF EQUIPMENT.

3. CLEANING SOLVENTS AND OTHER HAZARDOUS MATERIALS WILL BE STORED IN SUITABLE CONTAINERS UNTIL THE END OF THE EXERCISE. DISPOSAL OF THESE MATERIALS WILL COMPLY WITH REF C.

2. FOR FURTHER INFORMATION OR CLARIFICATION, MCB CLNC POC IS MR. BOB ALEXANDR, AV: 484-2544.

BT

#6555

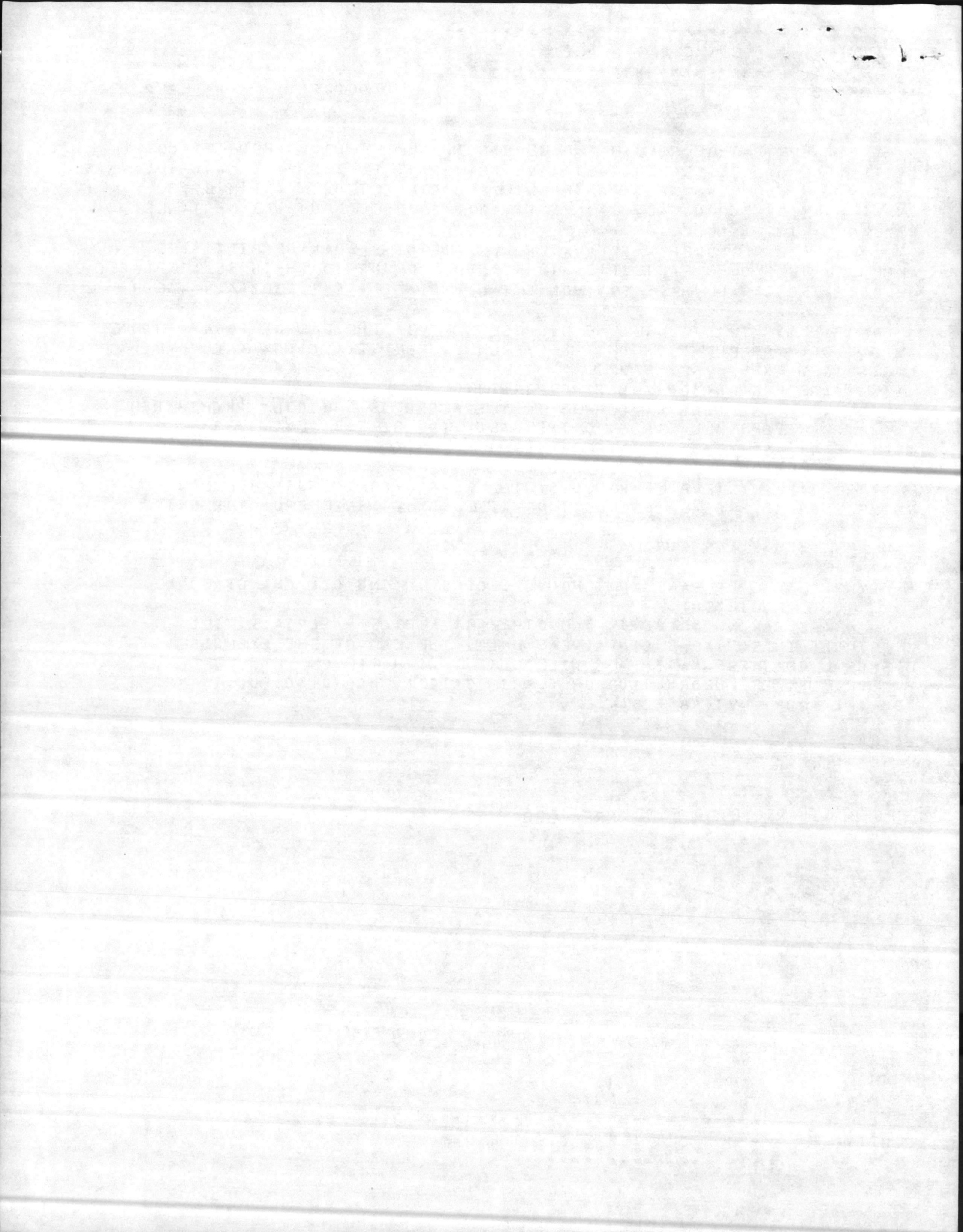
NNNN

INFO|BLOG|DSSC|BTMO|FSMO|NREA|320

*FAC*

ROUTINE

\*\*\*\*\*  
\* U N C L A S S I F I E D \*  
\*\*\*\*\*



ROUTINE

\*\*\*\*\*  
\* U N C L A S S I F I E D \*  
\*\*\*\*\*

11 3/0856Z

PT00222

PAGE 01

RTTU7YUW RHCJS GG6555 1122138-UUUU--RUEBDOA RUEBDOR RUEBDOO.

ZNR UUUUU

R 222138Z APR 83

FM CG FMFLANT

TO RUEBDOO/CG SECOND MARDIV

RUCLEFCJ/CG SECOND MAW

RUEBDOR/CG SECOND FSSG

RULYOWA/CG FOURTH MAR

RUCIPFT/CDR101STABNDIV (AIRASLT) FT CAMPBELL KY

INFO RUEBDOA/CG MCR CAMP LEJEUNE NC

BT

UNCLAS //NO4000//

SUBJ: ENVIRONMENTAL PROTECTION MEASURES DURING SOLID SHIELD 83

A. II MAF OPORD 2083 (SOLID SHIELD 83)

B. CG MCR CAMP LEJEUNE NC 112015Z APR 83 PASEP

1. IN ADDITION TO GUIDANCE CONTAINED REF A REQ ADHERE TO MEASURES OUTLINED REF B WHICH ARE REITERATED HEREIN:

REFERENCE - CAMP LEJEUNE MARINE CORPS BASE ORDERS:

A. RO 11015.6

B. RO 11090.1B

C. RO 6240.5

TEXT. A. GENERAL.

PAGE 02 RHCJSG 66555 UNCLAS

1. USE EXISTING MAIN ROADS AND TRAILS TO THE MAXIMUM EXTENT TACTICALLY FEASIBLE TO CONSIDERABLY REDUCE VEHICULAR DAMAGE TO WETLANDS AND WILDLIFE HABITAT. VEHICULAR TRAFFIC OVER THE FRONTAL DUNES OF ONSLOW BEACH IS PROHIBITED.

2. THE HABITAT LOCATIONS OF THE REDCOCKADED WOODPECKER, AN ENDANGERED SPECIES, ARE SPECIFIED IN REF A. UNITS ESTABLISHING CP'S AND BIVOUAC AREAS WITHIN THE BUFFER ZONES WILL OBSERVE THE AUTHORIZED PROCEDURES OF REF A.

B. SPILL PREVENTION, CONTAINMENT AND CLEAN-UP

1. DISCHARGE OF OILS OR OTHER HAZARDOUS MATERIALS ON OR INTO THE GROUNDS AND WATERS IS PROHIBITED PER REF B.

2. IN THE EVENT OF A SPILL (MORE THAN ONE GALLON):

A. CALL BASE FIRE DEPT, EXT 3333 ON BASE OR 451-3333 FROM OFF-BASE.

B. PERSONNEL ON SITE SHALL ERECT A SAND OR EARTH BERM TO CONTAIN SPILLS ON THE GROUND.

C. KEEP UNAUTHORIZED PERSONNEL OUT OF THE AREA.

D. PROVIDE PERSONNEL AND EQUIPMENT SUPPORT FOR SPILL CONTAINMENT AND CLEAN-UP AS REQUESTED BY BASE SPILL RESPONSE ON-SCENE COORDINATOR.

PAGE 03 RHCJSG 66555 UNCLAS

C. WASTE DISPOSAL

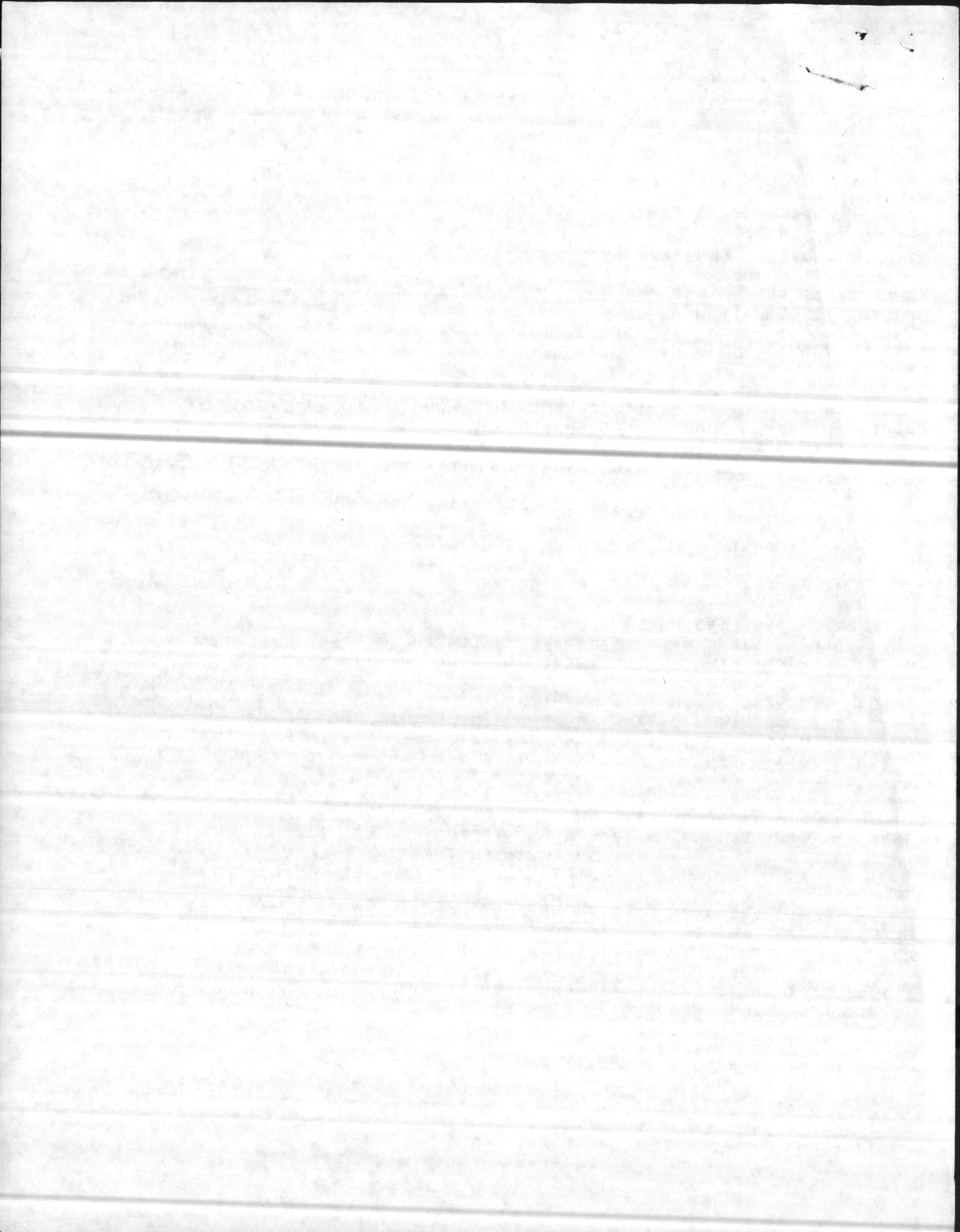
ROUTINE

\*\*\*\*\*  
\* U N C L A S S I F I E D \*  
\*\*\*\*\*

27

21

387 APR 83





ROUTINE

\*\*\*\*\*  
\* U N C L A S S I F I E D \*  
\*\*\*\*\*

11 3/08 56Z

PT00222

PAGE 02

1. BURYING OF REFUSE AND DERRIS IN THE FIELD IS PROHIBITED. UNITS WILL COLLECT SOLID WASTE AND TRANSPORT TO THE BASE LANDFILL.

2. FIELD MESS WASTE WATER WILL BE COLLECTED IN A TAM B2130 TANK, FABRIC, 3,000 GAL. CALL EXT. 3001/3002 FOR PUMPING OF TANKS BY BASE MAINTENANCE.

3. FIELD SHOWER WASTE WATER WILL REQUIRE SOAKAGE PIT. SITE APPROVAL OF SHOWER FACILITIES IS REQUIRED PRIOR TO THEIR BEING PLACED IN OPERATION. CALL BASE ENVIRONMENTAL ENGINEER, EXT. 3034/2544 FOR SITE APPROVAL.

D. SANITARY WASTE WILL BE DISPOSED OF VIA THE USE OF PORT-A-JOHN'S THROUGHOUT THE DURATION OF THE EXERCISE. FOR SERVICING, CALL BASE LOGISTICS, EXT. 5962/5520.

E. FIRE PREVENTION AND FIRE FIGHTING

1. THE BURNING OF DERRIS IN THE FIELD IS STRICTLY PROHIBITED.

2. REPORT ALL FIRES TO THE BASE FIRE DEPT AT EXT. 3333.

ON BASE OR 451-3333 FROM OFF-BASE.

F. FIELD VEHICLE MAINTENANCE

1. ALL WASTE POL PRODUCTS WILL BE STORED IN SUITABLE CONTAINERS AND DISPOSAL INSTRUCTIONS WILL BE OBTAINED FROM THE UNIT

PAGE 04 RHCJSG 6655 UNCLAS

S-4.

2. USE DRIP PANS AND GROUND CLOTHS DURING OIL CHANGING AND FUELING OF EQUIPMENT.

3. CLEANING SOLVENTS AND OTHER HAZARDOUS MATERIALS WILL BE STORED IN SUITABLE CONTAINERS UNTIL THE END OF THE EXERCISE. DISPOSAL OF THESE MATERIALS WILL COMPLY WITH REF C.

2. FOR FURTHER INFORMATION OR CLARIFICATION, MCB CLNC POC IS MR. BOB ALEXANDR, AV: 484-2544.

BT

#6555

NNNN

INFO|BLOG|DSSC|BTMO|FSMO|NREA|320

*FAC*

ROUTINE

\*\*\*\*\*  
\* U N C L A S S I F I E D \*  
\*\*\*\*\*

