

# Memorandum

NREAD/DDS/sm  
~~11330~~ 11090

DATE: 19 Sep 1983

FROM: Supervisory Ecologist

TO: Supervisory Chemist and Environmental Protection Specialist

SUBJ: Water Pollutant Control/Abatement

Ref: (a) National Pollutant Discharge Elimination System Permit

1. This memo is to advise that current monitoring of garrison shops maintenance areas relative to discharges of oil and greases and of suspended solids will be done on the following schedule in the future:

a. Water Quality Lab Personnel will:

(1) Check the following facilities once per month:

- (a) Amtrac maintenance facilities at A-1, A-2, A-3, etc.
- (b) Consolidated washing/maintenance facilities for 1800 area and 900 area
- (c) Building 1775 (oil water separator only)
- (d) Tank/Auto Shop (when brought on line)
- (e) Building 1450 (pull an oil and grease once per quarter on discharge from SW corner of lot)

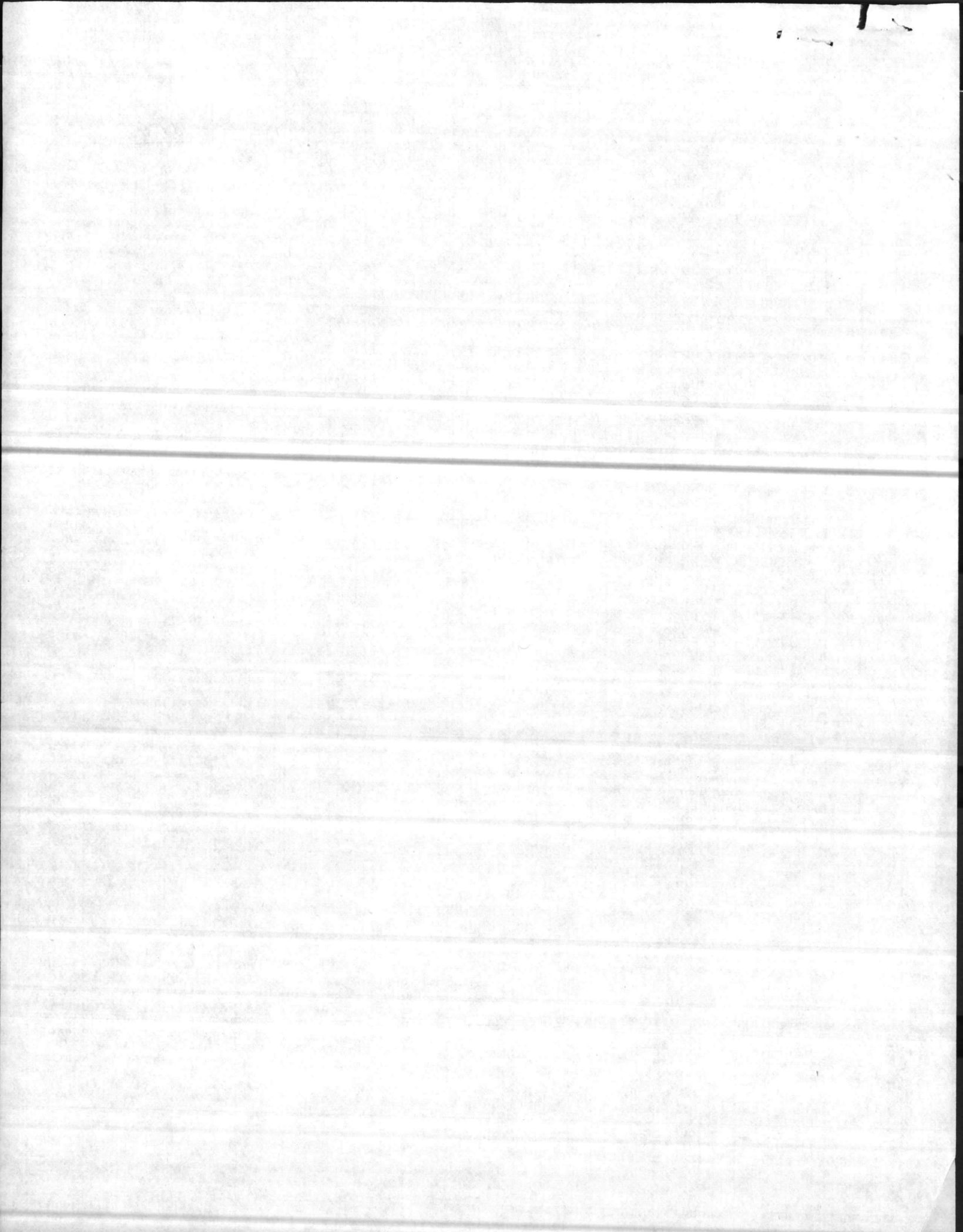
(2) For remaining facilities, randomly select 7-10 % and inspect each month.

(3) Inspections will focus on the operation and maintenance of pollution abatement facilities. The Environmental Protection Specialist will provide Lab with current list of facilities requiring spotchecking. Copies of inspections will be provided to Supervisory Ecologist as soon as possible following inspection.

b. Environmental Protection Specialist will:

(1) Conduct courtesy inspections at least annually for each organization/shop routinely handling POL's and other hazardous materials and operating washing/maintenance facilities with potential to discharge improperly treated wastewater to the environment in noncompliance with the reference.

(2) Will maintain a listing of significant potential sources of industrial wastes/wastewater, and will provide copies to Supervisor and to Water Quality Lab.



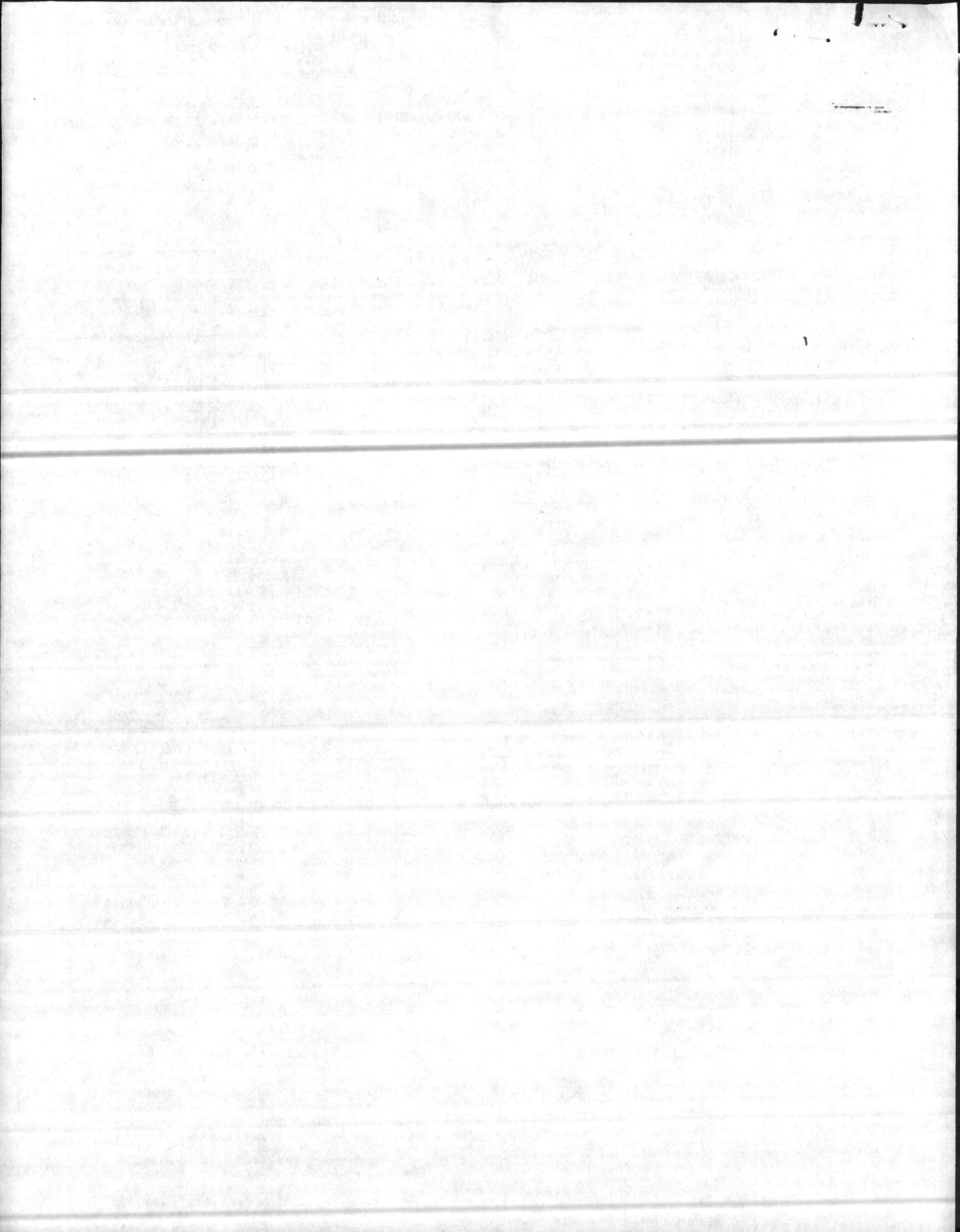
NREAD/DDS/sm  
11330

Subj: Water Pollutant Control/Abatement

(3) Will conduct followup of reported discrepancies  
and make recommendations for corrective action.

*Danny Sharpe*  
Danny Sharpe





RESPONSE KEYS FOR OIL POLLUTION ABATEMENT DEVICE PROBLEMS

Use of Keys: Dichotomous keys are sets of paired statements (couplets); one member of a pair will be true and the other false for any specific condition. To use a key, start at the first statement. If that statement is true, abide by the designated response or go to the first statement of the couplet that immediately follows. If the statement is false, go to the second statement of the first couplet and abide by that response or go to the next couplet following that statement. And so on . . . . .

- 
- |  |  |
|--|--|
| Key 1. Hazardous material spills, excessive accumulation of POL's or hazardous material, or threat to personal safety. | Key 2. Incorrect Water Levels                        |
| Key 3. Valves not set properly   | Key 4. Trash, Debris, Grit, Erosion, Physical Damage |
- 

Key 1  
 Pollutant hazard the result of a spill and/or poses an immediate threat to personal safety

- |  |            |
|--|------------|
| Spill in progress, spill entered sewer, storm drain or surface waters or otherwise uncontained or poses a safety hazard . . . . .                              | Response 1 |
| Spill contained; no immediate hazard to personal safety or physical property; contained spills include oil in pump station and in containment device . . . . . | Response 2 |

Pollutant hazard the result of excessive accumulation of hazardous material during routine use . . . . .

- |  |            |
|--|------------|
| Waste oil tank gauge reading 450 gallons or more . . . . .   | Response 3 |
| Waste oil tank not over 450 gallons . . . . .  |            |
| Oil depth in middle chamber of oil/water separator greater than 6 inches or oil present in 3d chamber of oil/water separator . . . . . | Response 6 |
| Oil in middle chamber of oil/water separator less than 6 inches and no oil in effluent chambers . . . . .                              |            |
| Oil in a storm-water storage tank greater than three inches . . . . .  | Response 6 |
| Oil not greater than three inches in storm-water storage tank. Discharge other than previously listed . . . . .                        | Response 4 |

Key 2.

Water level in pump station or storm-water storage tank not within normal operating range . . . . .	Response 5
Water level abnormal in structure not equipped with pumps . . . . .	
Water level incorrect due to improperly set valve . . . . .	Key 3
Water level incorrect because of pipe blockage or other maintenance deficiency <sup>A</sup> . . . . .	Response 6

---

Key 3.

Valve mistakenly set on OPEN . . . . .	
Oil discharging or previously discharged to environment . . . . .	Key 1
No pollutants released yet but future release possible if valve left in OPEN position . . . . .	Response 7
Valve mistakenly set on SHUT . . . . .	
Device flooded - pollutants released to environment . . . . .	Key 1
Device flooded or has potential to flood. No pollutants have been released . . . . .	Response 4

---

Key 4.

Accumulation of grit, trash, etc. inside a grit chamber, oil/water separator, pump station, etc., that is threatening to the proper operation of the device . . . . .	Response 6
Debris not inside a chamber or basin. . . . .	
Accumulation of trash, grit, etc, on surface of a wash area, oil drum storage area, etc. . . . .	Response 8
Trash and debris not on device but erosion blocking bypass or curbing, funnels, gratings, or other physical structure broken . . . . .	Response 8

---

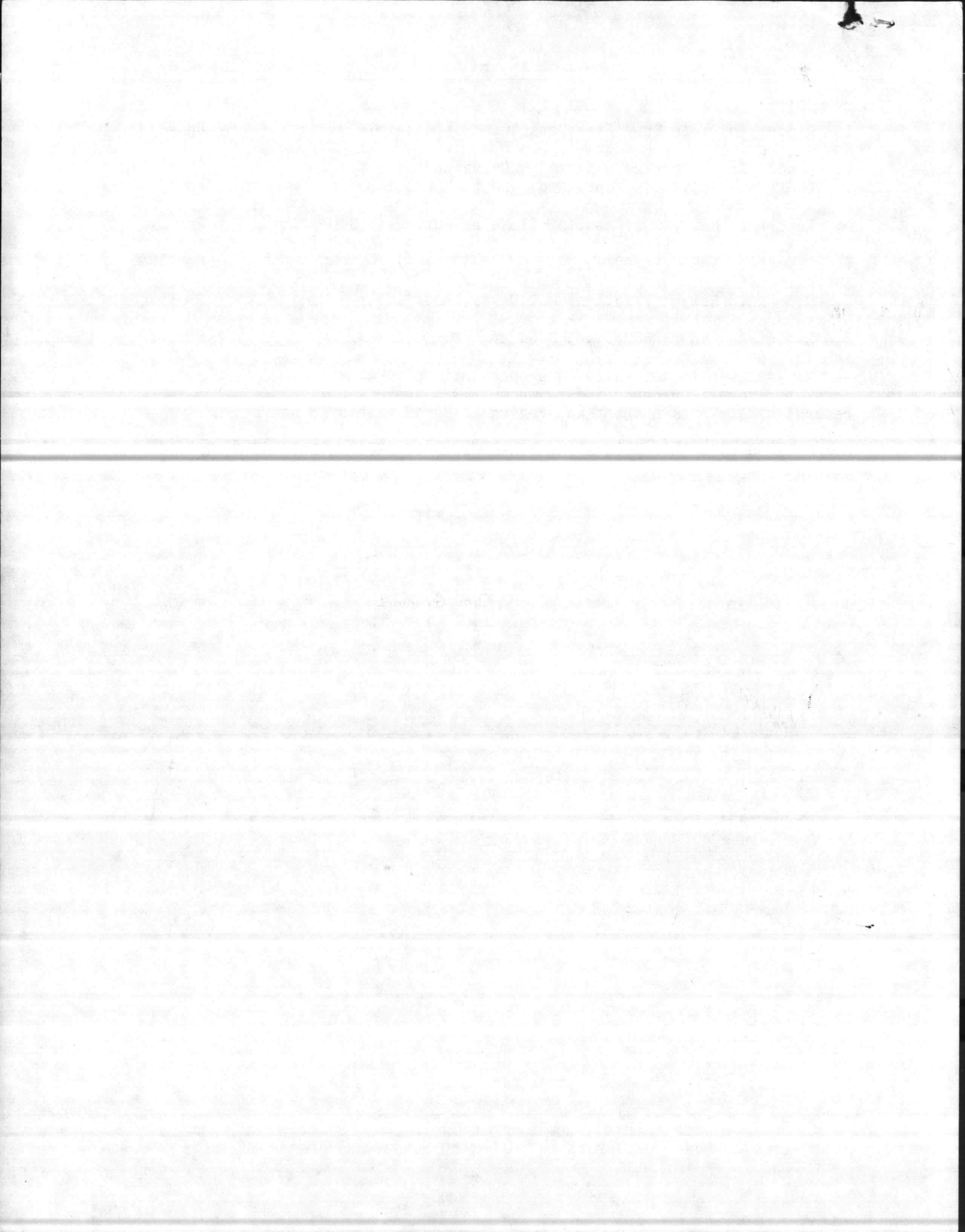
A. Storm bypass chambers at Bldg 1780 and at FC-201 do not drain properly because of construction problems. Also oil/water separators at Public car wash, Onslow Beach, Golf Course Maintenance and GP-816 tend to overflow during wet weather. Note these problems on written report but do not report to Roads and Grounds. If pollutant release imminent, report immediately to NREAB.



## RESPONSES

1. Report Spill to Base Fire Department Immediately Ph #3333
2. Report Spill to Fire Department Dispatcher Ph #3004  
(Note that spill is contained) and to NREAB Immediately Ph #2083
3. Report to Heavy Equipment by Close of Business (BCOB)<sup>1</sup> Ph #5909
4. Report to NREAB (ASAP) Ph #2083
5. Report to Sewage Treatment Mac Davis Immediately Ph #5933
6. Report to Roads and Grounds BCOB, Mr. Gray Ph #5158
7. Advise user to set valve on proper setting. Make record of verbal guidance and to whom it was spoken - record on data record sheet and return to NREAB within 48 hours
8. Note on discrepancy data form for return to NREAB within 48 hours

<sup>1</sup>Report to Francis or to Don Gurganus, Jim Grimmit





17 Feb. 83 Facilities folders have been prepared on major waste oil generating activities. Following activities are not described in individual folders, but do generate some waste material.

1. MARINE CORPS EXCHANGE SERVICE STATIONS.

- a. Central Service Station #1611
- b. Camp Geiger Service Station TC912
- c. Camp Johnson Service Station M171
- d. Courthouse Bay Service Station BB177
- e. Midway Park Service Station #4015
- f. MCAS(A) NR Service Station AS#410
- g. Rifle Range Service Station RR 72
- h. Tarawa Terrace Service Station #2453

These facilities generate some waste oil that is collected by Heavy Equipment.

2. BASE MAINTENANCE Division (Utilities)

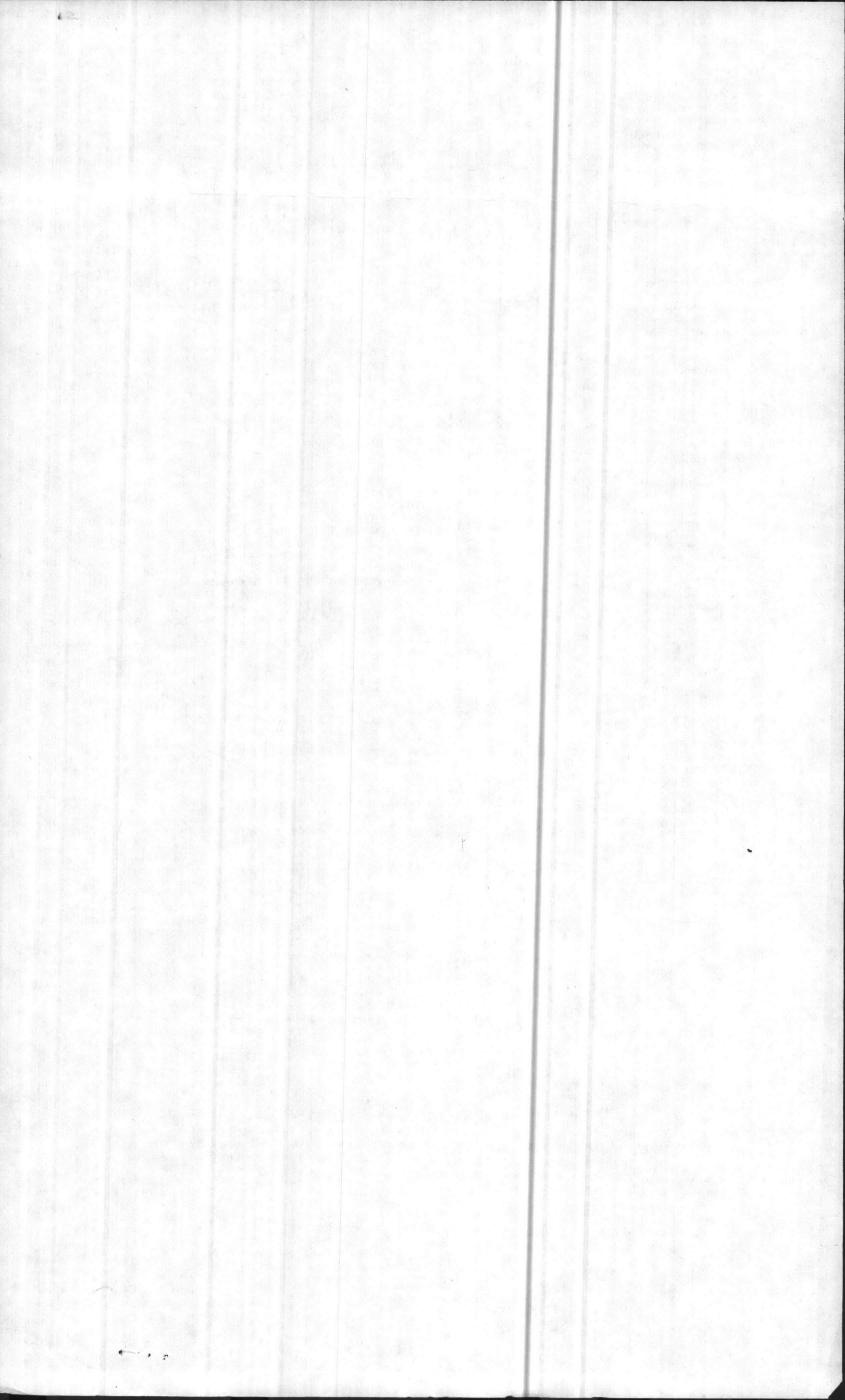
a). Steam Generation

- ~~Blag. 1700 - Hadnot Point~~
- M # 625 - Montford Point
- RR # 15 - RIFLE RANGE
- G # 650 - CAMP GEIGER
- AS # 4151 - AIR STATION
- BB # 9 - COURTHOUSE BAY
- PP # 2615 - PARADISE POINT

These plants generate small amounts of No. 6 fuel oil / PD-680 from the cleaning of fuel injection rods.

3. DIVISION and FSSG Armories:

Most battalions have an armory where there is small amount of PD-680 or Bore cleaner (6850-00-224-6663). The bore cleaner flash = 148° F.





17 Feb. 83 Facilities folders have been prepared on major waste oil generating activities. Following activities are not described in individual folders, but do generate some waste material.

1. MARINE CORPS EXCHANGE SERVICE STATIONS.

- a. Central Service Station #1611
- b. Camp Geiger Service Station TC912
- c. Camp Johnson Service Station M171
- d. Courthouse Bay Service Station BB177
- e. Midway Park Service Station #4015
- f. MCAS(H) NR Service Station AS#410
- g. Rifle Range Service Station RR 72
- h. Tarawa Terrace Service Station #2453

These facilities generate some waste oil that is collected by Heavy Equipment.

2. BASE MAINTENANCE Division (Utilities)

a). Steam Generation

- ~~Bldg. 1700~~ - ~~Hadnot Point~~
- M # 625 - Montford Point
- RR # 15 - RIFLE RANGE
- G # 650 - CAMP BEIGER
- AS # 4151 - AIR STATION
- BB # 9 - COURTHOUSE BAY
- PP # 2615 - PARADISE POINT

These plants generate small amounts of No. 6 fuel oil / PD-680 from the cleaning of fuel injection rods.

3. DIVISION and FSSG Armories:

Most battalions have an armory where there is small amount of PD-680 or Bore cleaner (6850-00-22+-6663). The bore cleaner flash = 148° F.



