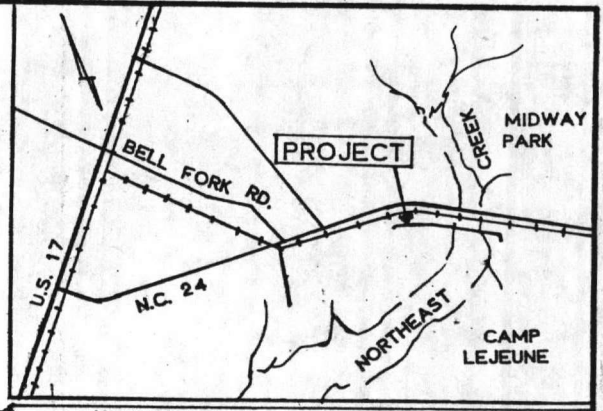
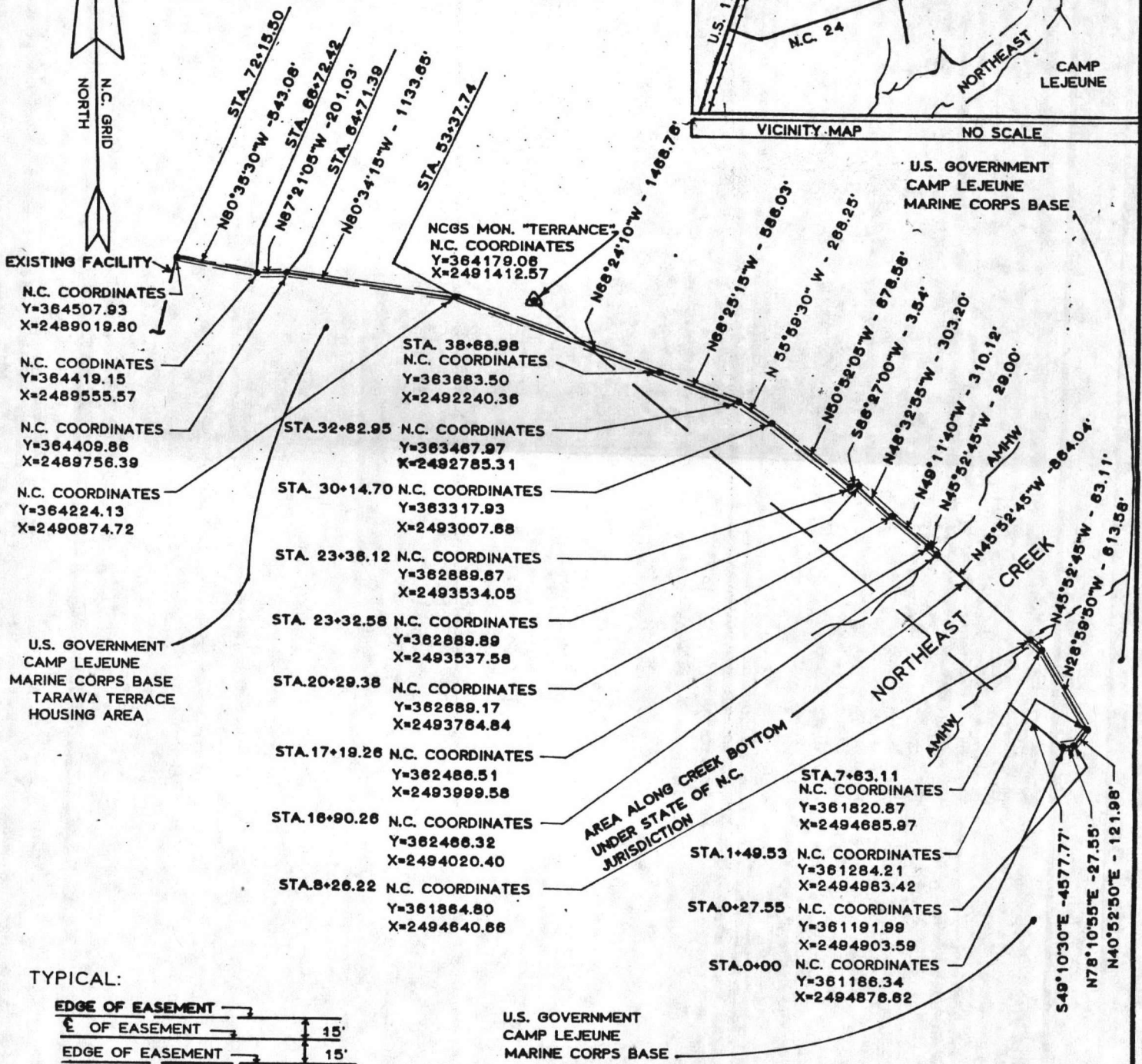


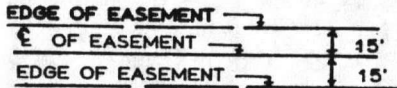
Parcel No.



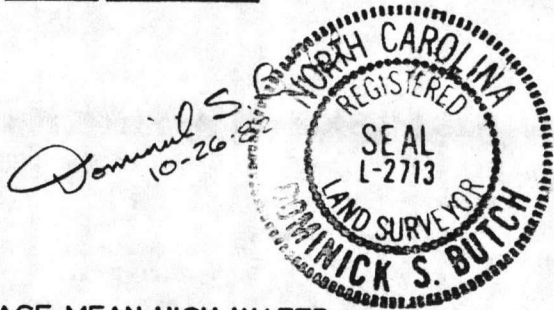
VICINITY MAP NO SCALE



TYPICAL:



U.S. GOVERNMENT CAMP LEJEUNE MARINE CORPS BASE



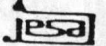
SURVEYED & MAPPED BY:

James E. Stewart and Associates, Inc.

CONSULTING ENGINEERS AND LAND SURVEYORS

P. O. DRAWER AD

JACKSONVILLE, NORTH CAROLINA 28540



CAROLINA POWER & LIGHT COMPANY

RALEIGH, N. C.

TARAWA TERRACE SECTION

LOCATION CAMP LEJEUNE

Scale 1" = 1000'

Date 10/20/82

Drawn by DJD

Checked by

Approved by

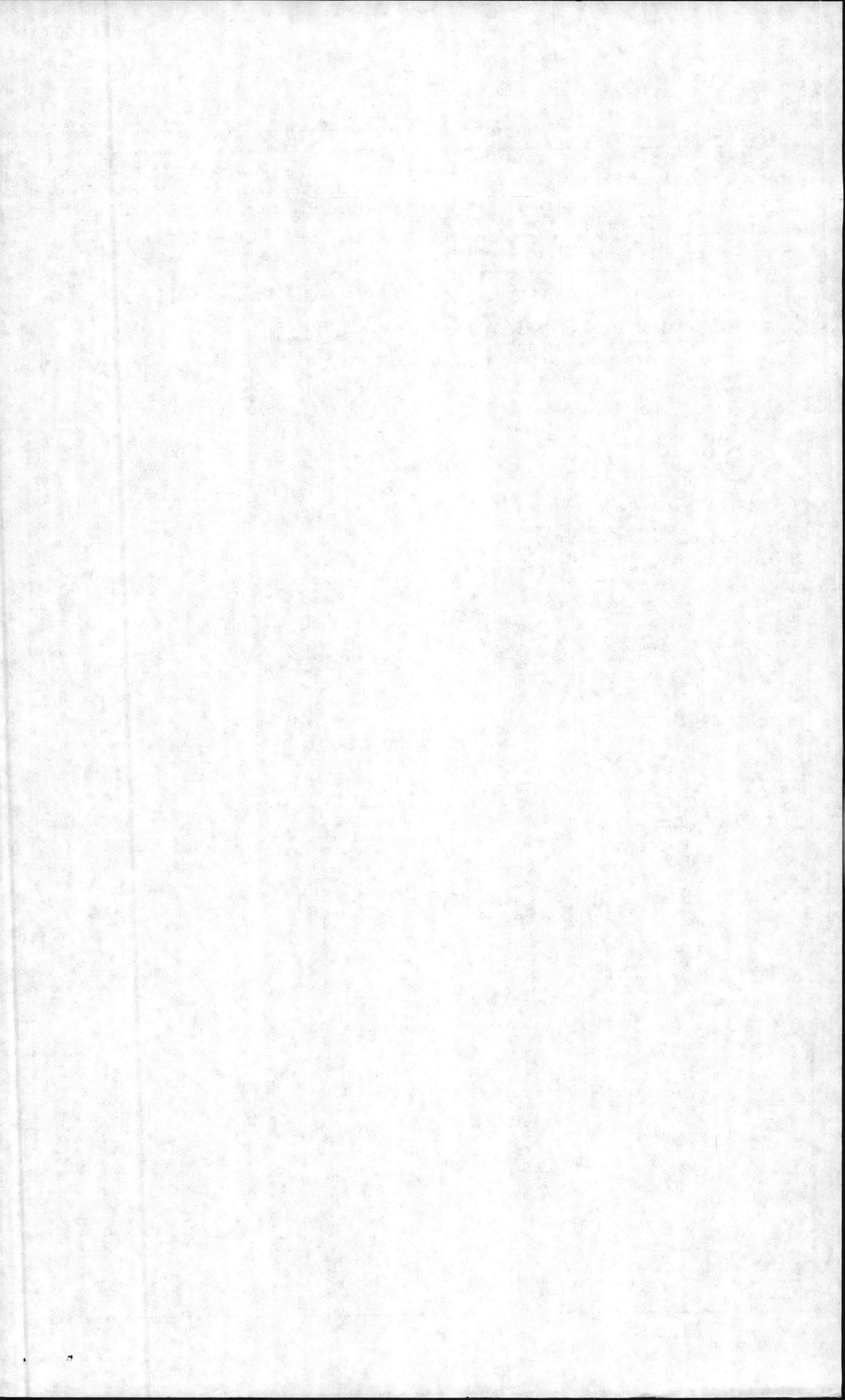
Dwg. No.

LEGEND

AMHW - AVERAGE MEAN HIGH WATER

NOTE:

ALL COURSES & DISTANCES ARE BASED ON THE NORTH CAROLINA COORDINATE SYSTEM.

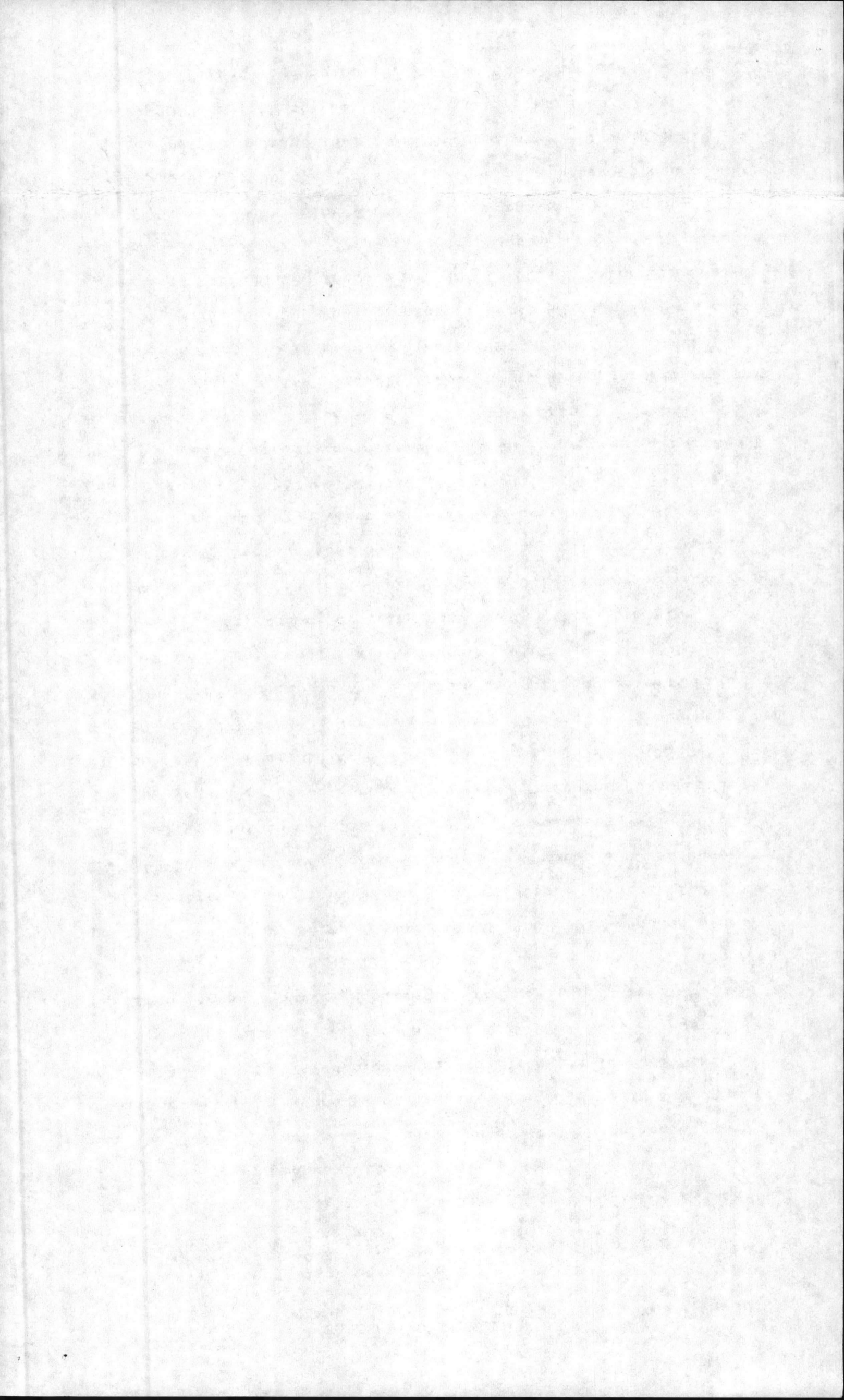


EASEMENT DESCRIPTION

Carolina Power and Light Company  
Tarawa Terrace Section  
Camp Lejeune, North Carolina

Being a 30 foot utility easement lying 15 feet each side of the centerline described as follows.

BEGINNING at a point in the fence line of the substation located near Northeast Creek and N. C. Highway 24 (N. C. Grid Coordinates - Y = 361186.34, X = 2494876.62), said point being located South 49 degrees 10 minutes 30 seconds East 4577.77 feet from North Carolina Geodetic Survey Monument "Terrance" (N. C. Grid Coordinates - Y = 364179.06, X = 2491412.57); thence from the above described point of beginning, North 78 degrees 10 minutes 55 seconds East 27.55 feet to a point (N. C. Grid Coordinates - Y = 361191.99, X = 2494903.59); thence North 40 degrees 52 minutes 50 seconds East 121.98 feet to a point (N. C. Grid Coordinates - Y = 361284.21, X = 2494983.42); thence North 28 degrees 59 minutes 50 seconds West 613.58 feet to a point (N. C. Grid Coordinates - Y = 361820.87, X = 2494685.97); thence North 45 degrees 52 minutes 45 seconds West 63.11 feet to a point on the approximate Southeastern mean high water mark of Northeast Creek (N. C. Grid Coordinates - Y = 361864.80, X = 2494640.66); thence crossing said creek with a tie line (easement not being included along tie line), North 45 degrees 52 minutes 45 seconds West 864.04 feet to a point on the approximate Northwestern mean high water mark of said creek (N. C. Grid Coordinates - Y = 362466.32, X = 2494020.40); thence continuing with the centerline of the easement, North 45 degrees 52 minutes 45 seconds West 29.0 feet to a point (N. C. Grid Coordinates - Y = 362486.51, X = 2493999.58); thence North 49 degrees 11 minutes 40 seconds West 310.12 feet to a point (N. C. Grid Coordinates - Y = 362689.17, X = 2493764.84); thence North 48 degrees 32 minutes 55 seconds West 303.20 feet to a point (N. C. Grid Coordinates - Y = 362889.89, X = 2493537.58); thence South 86 degrees 27 minutes West 3.54 feet to a point (N. C. Grid Coordinates - Y = 362889.67, X = 2493534.05); thence North 50 degrees 52 minutes 05 seconds West 678.58 feet to a point (N. C. Grid Coordinates - Y = 363317.93, X = 2493007.68); thence North 55 degrees 59 minutes 30 seconds West 268.25 feet to a point (N. C. Grid Coordinates - Y = 363467.97,



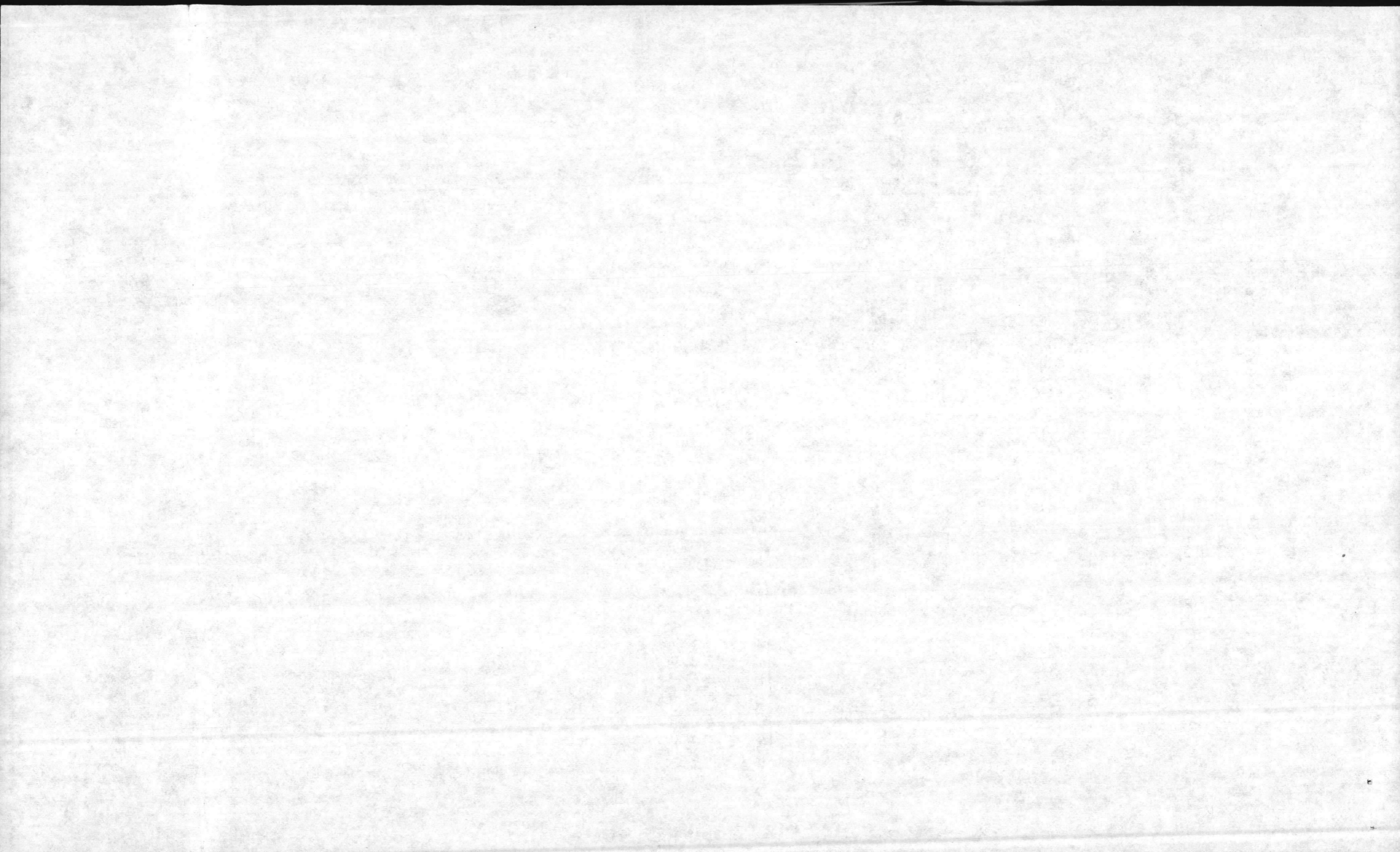
X = 2492785.31); thence North 68 degrees 25 minutes 15 seconds West 586.03 feet to a point (N. C. Grid Coordinates - Y = 363683.50, X = 2492240.36); thence North 68 degrees 24 minutes 10 seconds West 1468.76 feet to a point (N.C. Grid Coordinates - Y = 364224.13, X = 2490874.72); thence North 80 degrees 34 minutes 15 seconds West 1133.65 feet to a point (N. C. Grid Coordinates - Y = 364409.86, X = 2489756.39); thence North 87 degrees 21 minutes 05 seconds West 201.03 feet to a point (N. C. Grid Coordinates - Y = 364419.15, X = 2489555.57); thence North 80 degrees 35 minutes 30 seconds West 543.08 feet to a point (N. C. Grid Coordinates - Y = 364507.93, X = 2489019.80). According to a survey by James E. Stewart and Associates, Inc., on October 20, 1982. All courses and distances are based on the North Carolina Grid Coordinate System.

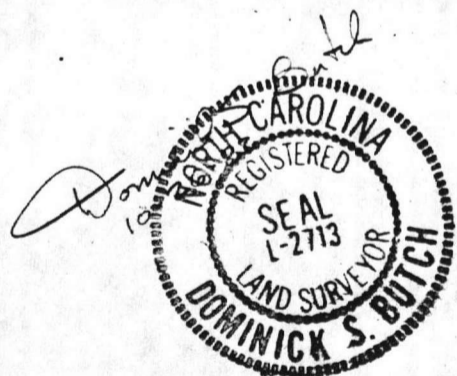
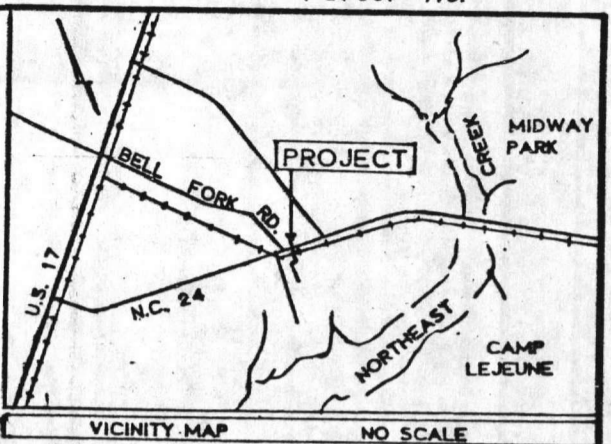
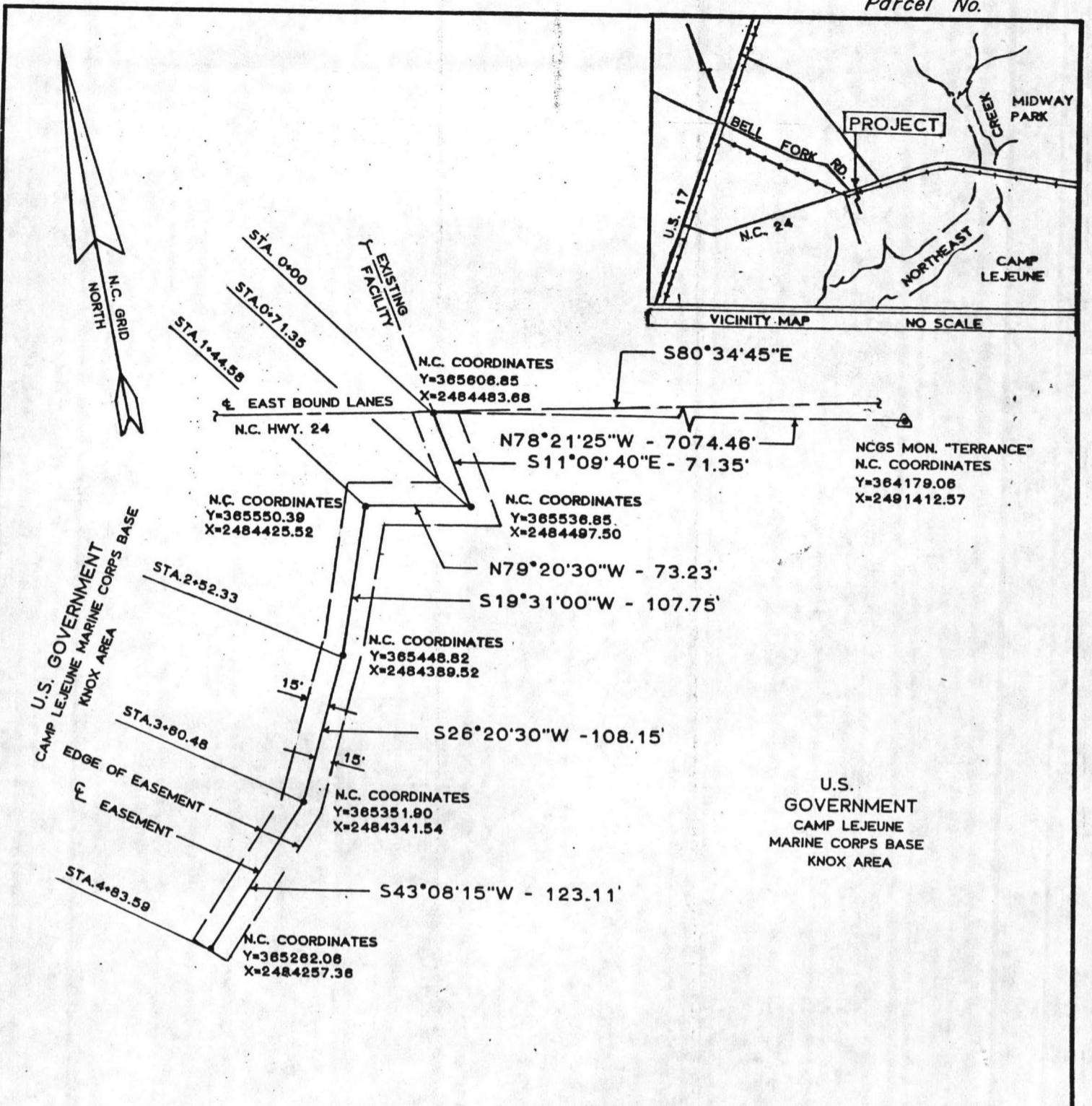
*Dominick S. Butch*

Dominick S. Butch, R.L.S., L-27



James E. Stewart and Associates, Inc.  
P.O. Drawer AD  
Jacksonville, North Carolina 28540





SURVEYED & MAPPED BY:  
*James E. Stewart and Associates, Inc.*  
 CONSULTING ENGINEERS AND LAND SURVEYORS  
 P. D. DRAWER AD  
 JACKSONVILLE, NORTH CAROLINA 28540



**CAROLINA POWER & LIGHT COMPANY**  
 RALEIGH, N. C.  
 CAMP KNOX ROAD SECTION

---

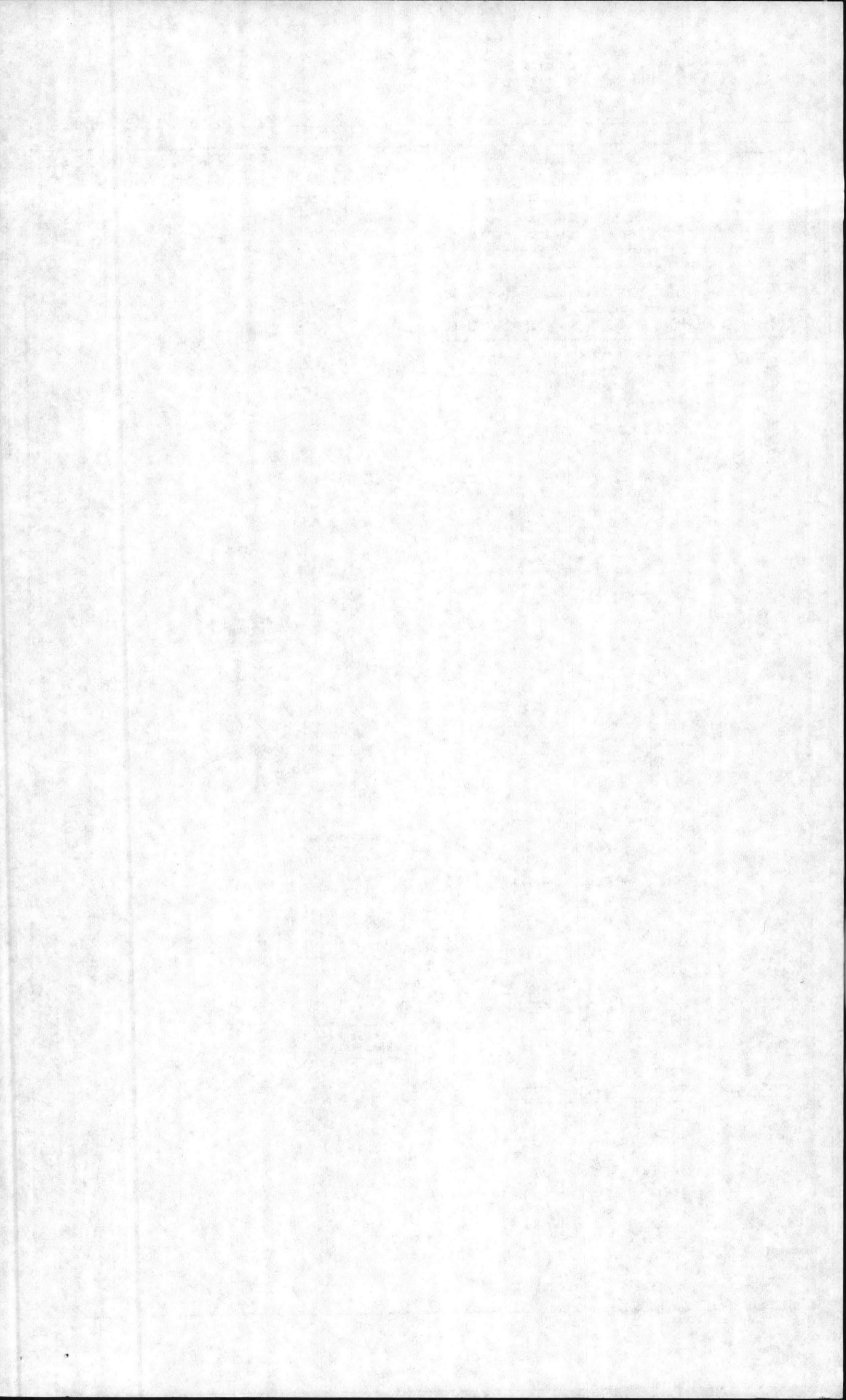
LOCATION CAMP LEJEUNE

Scale 1" = 100' Date 10/20/82

Drawn by DJD Checked by \_\_\_\_\_

Approved by \_\_\_\_\_ Dwg. No. \_\_\_\_\_

**NOTE:**  
 ALL COURSES & DISTANCES ARE  
 BASED ON THE NORTH CAROLINA  
 COORDINATE SYSTEM.





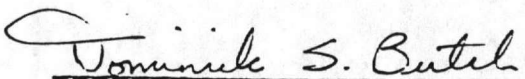
EASEMENT DESCRIPTION

Carolina Power and Light Company  
Camp Knox Road Section  
Camp Lejeune, North Carolina

Being a 30 foot utility easement lying 15 feet each side of the centerline described as follows.

BEGINNING at a point in the centerline of the East bound lanes of NC Highway 24 (N. C. Grid Coordinates - Y = 365606.85, X = 2484483.68), said point being located North 78 degrees 21 minutes 25 seconds West 7074.46 feet from North Carolina Geodetic Survey Monument "Terrance" (N. C. Grid Coordinates - Y = 364179.06, X = 2491412.57); thence from the above described point of beginning, South 11 degrees 09 minutes 40 seconds East 71.35 feet to a point (N. C. Grid Coordinates - Y = 365536.85, X = 2484497.50); thence North 79 degrees 20 minutes 30 seconds West 73.23 feet to a point (N. C. Grid Coordinates - Y = 365550.39, X = 2484425.52); thence South 19 degrees 31 minutes West 107.75 feet to a point (N. C. Grid Coordinates - Y = 365448.82, X = 2484389.52); thence South 26 degrees 20 minutes 30 seconds West 108.15 feet to a point (N. C. Grid Coordinates - Y = 365351.90, X = 2484341.54); thence South 43 degrees 08 minutes 15 seconds West 123.11 feet to a point (N. C. Grid Coordinates - Y = 365262.06, X = 2484257.36).

According to a survey by James E. Stewart and Associates, Inc., on October 20, 1982. All courses and distances are based on the N. C. Grid Coordinates System.

  
Dominick S. Butch, R.L.S., L-2713



James E. Stewart and Associates,  
P. O. Drawer AD  
Jacksonville, North Carolina 28540

