



Fuller
Riley
Charles
Danny

MS
CP

UNITED STATES MARINE CORPS
MARINE CORPS BASE
CAMP LEJEUNE, NORTH CAROLINA 28542-5001

IN REPLY REFER TO:
5420/2
FAC
APR 28 1987

From: Chairman, Environmental Impact Review Board
Subj: MINUTES OF ENVIRONMENTAL IMPACT REVIEW BOARD ON 10 APR 87

Ref: (a) BO 11000.1B
(b) BO 11015.2G

- Encl: (1) P-517, Armory Addition, FY-90, MCAS, NR
(2) P-514, General Warehouse, FY-90, MCAS, NR
(3) P-873, Remotely Piloted Vehicle Maintenance Shop, FY-90, 2d MarDiv
(4) Expansion of Engineer Equipment Operators Training Facilities, FY-88, MCES

1. Completed PEA's are forwarded for implementation of environmental protection measures per references (a) and (b). Actions to obtain environmental permits during project design should be pursued accordingly.

2. Board action on remaining projects are listed below:

a. Exercise Solid Shield-87: PEA accepted as prepared by CINCLant with following observations:

(1) Specific environmental requirements for operations at Camp Lejeune should be stated in the Letter of Instruction for exercise units (Note: LOI contains Appendix 15 "Environmental Protection" (confidential), 3 October 1986 which has a general statement addressing adherence to local Base Orders and requiring environmental briefings to be given by component units.)

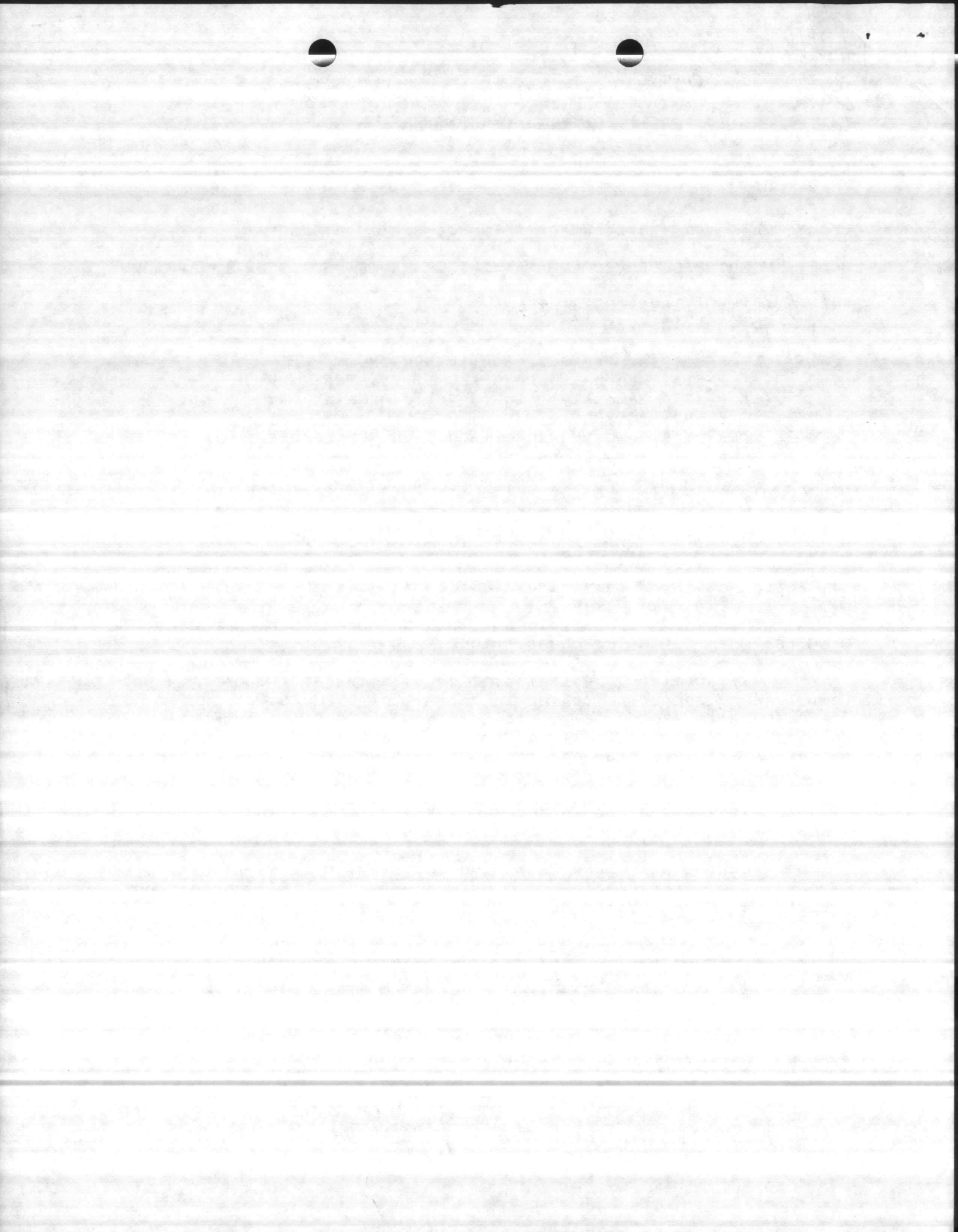
(2) The PEA should have emphasized restoration of training areas by using units per the MCB Range SOP, BO 11102.1K.

b. Reutilization and Marketing Facility, Defense Logistics Agency: Project tabled pending guidance from LANTDIV concerning subsurface contamination of portions of the site by toxic chemicals.

c. Projects tabled pending clarification of scope, resources, and timing: Soviet Strongpoint - 2d Marine Division; Alcohol Rehabilitation Center, Naval Hospital.

3. Please contact Mr. Alexander, Environmental Engineer, for further information on these projects.

T. J. Dalzell
T. J. DALZELL



Subj: MINUTES OF ENVIRONMENTAL IMPACT REVIEW BOARD ON 10 APR 87

DISTRIBUTION:

CMC (LFL)

CINCLANT

LANTDIV (Codes 114 & 09A)

CO, NavHosp

CO, MCES

(Members)

Rep, 2d MarDiv (G-4)

Rep, 2d FSSG (G-4)

Rep, 6th MAB (G-4)

Rep, MCAS, NR (S-4)

TFACO

BMO

PWO

(Advisors)

Dir, NREA

SupvEcologist

BWildlifeMgr

BGameProtector

SAFD

SJA

DPDO

Ch, VetMedSvc, NavHosp

Ch, Occup/PrevMed, NavHosp

EnvEngr



1974

UNITED STATES MARINE CORPS
Marine Corps Base
Camp Lejeune, North Carolina 28542

ENVIRONMENTAL IMPACT/ENVIRONMENTAL ENHANCEMENT REVIEW BOARD

PRELIMINARY ENVIRONMENTAL ASSESSMENT (PEA) Date: _____

SUBJ: P-517, ARMORY ADDITION, FY-90, MCAS, New River

In accordance with Base Orders 11000.1B and 11015.2G, the subject action has been reviewed by the Marine Corps Base Environmental Impact Review Board.

BOARD ACTION

_____ The board agreed there appears to be no significant environmental impact or controversy associated with this project.

XX _____ The Board agreed there appears to be no significant environmental impact or controversy associated with this project provided:

- An approved sediment control plan is obtained during project design from N.C. Division of Land Quality.
- Approval of extensions of water and sewerage systems is obtained during project design from State of North Carolina agencies.
- Construction of hazardous materials/waste storage facilities is included in the project as needed.

_____ The Board agreed there is potential environmental impact with the project and recommends the following:



UNITED STATES MARINE CORPS
Marine Corps Base
Camp Lejeune, North Carolina 28542

ENVIRONMENTAL IMPACT/ENVIRONMENTAL ENHANCEMENT REVIEW BOARD

PRELIMINARY ENVIRONMENTAL ASSESSMENT (PEA) Date: _____

SUBJ: P-514, GENERAL WAREHOUSE, FY-90, MCAS, NR

In accordance with Base Orders 11000.1B and 11015.2G, the subject action has been reviewed by the Marine Corps Base Environmental Impact Review Board.

BOARD ACTION

_____ The board agreed there appears to be no significant environmental impact or controversy associated with this project.

XX_____ The Board agreed there appears to be no significant environmental impact or controversy associated with this project provided:

- An approved sediment control plan is obtained during project design from N.C. Division of Land Quality.
- Approval of extensions of water and sewerage systems is obtained during project design from State of North Carolina agencies.
- Construction of hazardous materials/waste storage facilities is included in the project as needed.

_____ The Board agreed there is potential environmental impact with the project and recommends the following:



UNITED STATES MARINE CORPS
Marine Corps Base
Camp Lejeune, North Carolina 28542

ENVIRONMENTAL IMPACT/ENVIRONMENTAL ENHANCEMENT REVIEW BOARD

PRELIMINARY ENVIRONMENTAL ASSESSMENT (PEA) Date: _____

SUBJ: P-873, REMOTELY PILOTED VEHICLE MAINTENANCE SHOP

In accordance with Base Orders 11000.1B and 11015.2G, the subject action has been reviewed by the Marine Corps Base Environmental Impact Review Board.

BOARD ACTION

_____ The board agreed there appears to be no significant environmental impact or controversy associated with this project.

XX_____ The Board agreed there appears to be no significant environmental impact or controversy associated with this project provided:

-An approved sediment control plan is obtained during project design from N.C. Division of Land Quality.

-Approval of extensions of water and sewerage systems is obtained during project design from State of North Carolina agencies.

-Construction of hazardous materials/waste storage facilities is included in the project as needed.

_____ The Board agreed there is potential environmental impact with the project and recommends the following:



UNITED STATES MARINE CORPS
Marine Corps Base
Camp Lejeune, North Carolina 28542

ENVIRONMENTAL IMPACT/ENVIRONMENTAL ENHANCEMENT REVIEW BOARD

PRELIMINARY ENVIRONMENTAL ASSESSMENT (PEA) Date: _____

SUBJ: EXPANSION OF ENGINEER EQUIPMENT OPERATOR'S COURSE, FY-88,
MARINE CORPS ENGINEER SCHOOL

In accordance with Base Orders 11000.1B and 11015.2G, the subject action has been reviewed by the Marine Corps Base Environmental Impact Review Board.

BOARD ACTION

_____ The board agreed there appears to be no significant environmental impact or controversy associated with this project.

XX
_____ The Board agreed there appears to be no significant environmental impact or controversy associated with this project provided:

- Harvesting of marketable timber is accomplished prior to site clearing.
- Erosion controls are implemented during site preparation and maintained by MCES during equipment training such that all sediment is retained on-site.
- Spill prevention control measures are planned and implemented and a spill response SOP is prepared, forwarded for approval, and used by fuels personnel for operation of the interim fuel system.

_____ The Board agreed there is potential environmental impact with the project and recommends the following:



NATURAL RESOURCES AND ENVIRONMENTAL AFFAIRS
Marine Corps Base
Camp Lejeune, North Carolina 28542

28 Jan 87
Date

From: Director

To:

Charles

CDP

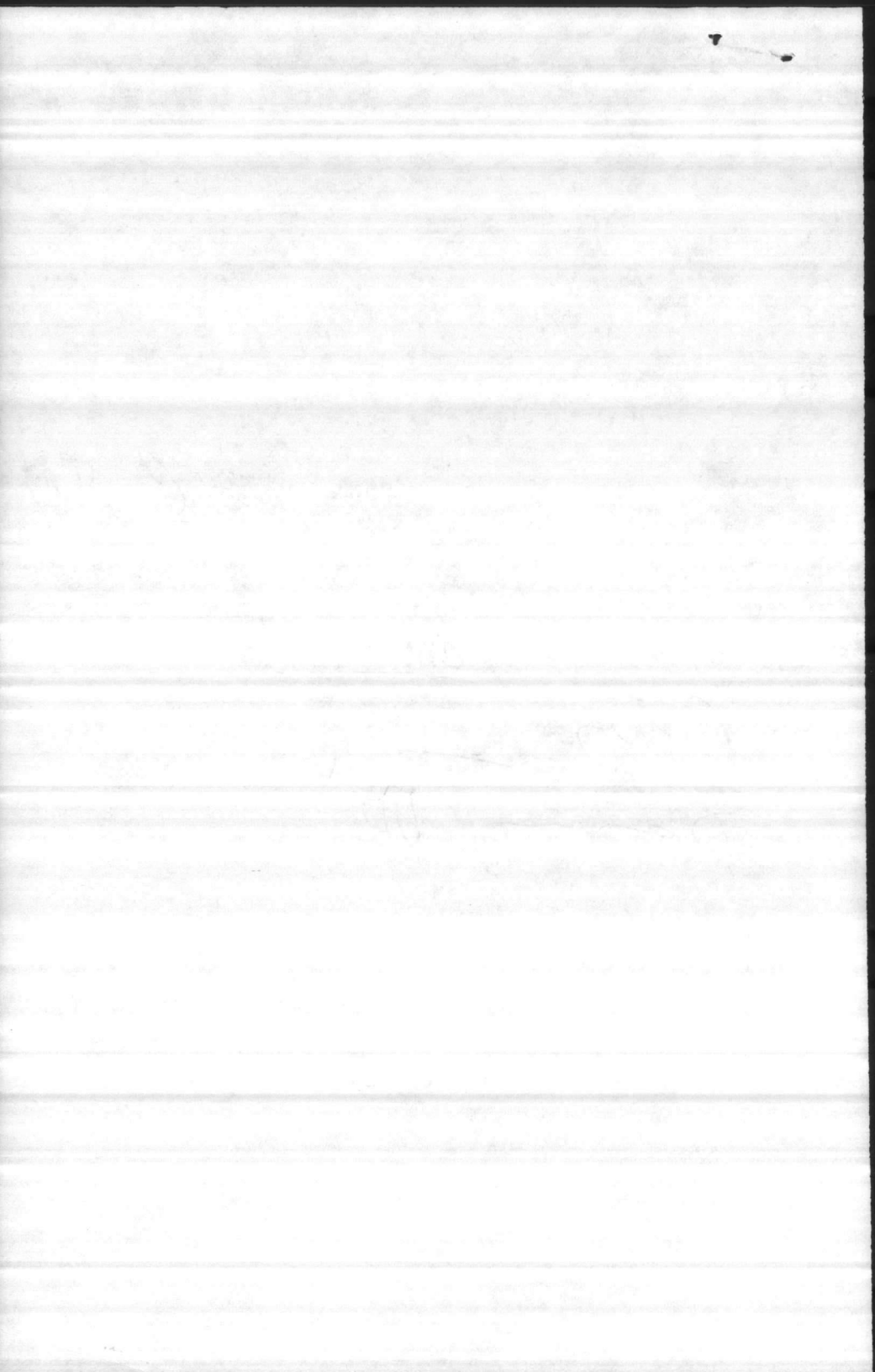
Subj:

Peter

Feb

Danny

ODS



28 Jan 87
DRAFT
for your
Review (pls)

ENVIRONMENTAL IMPACT STATEMENT
DRAFT SCOPE OF WORK
CAMP LEJEUNE REVIEW COMMENTS

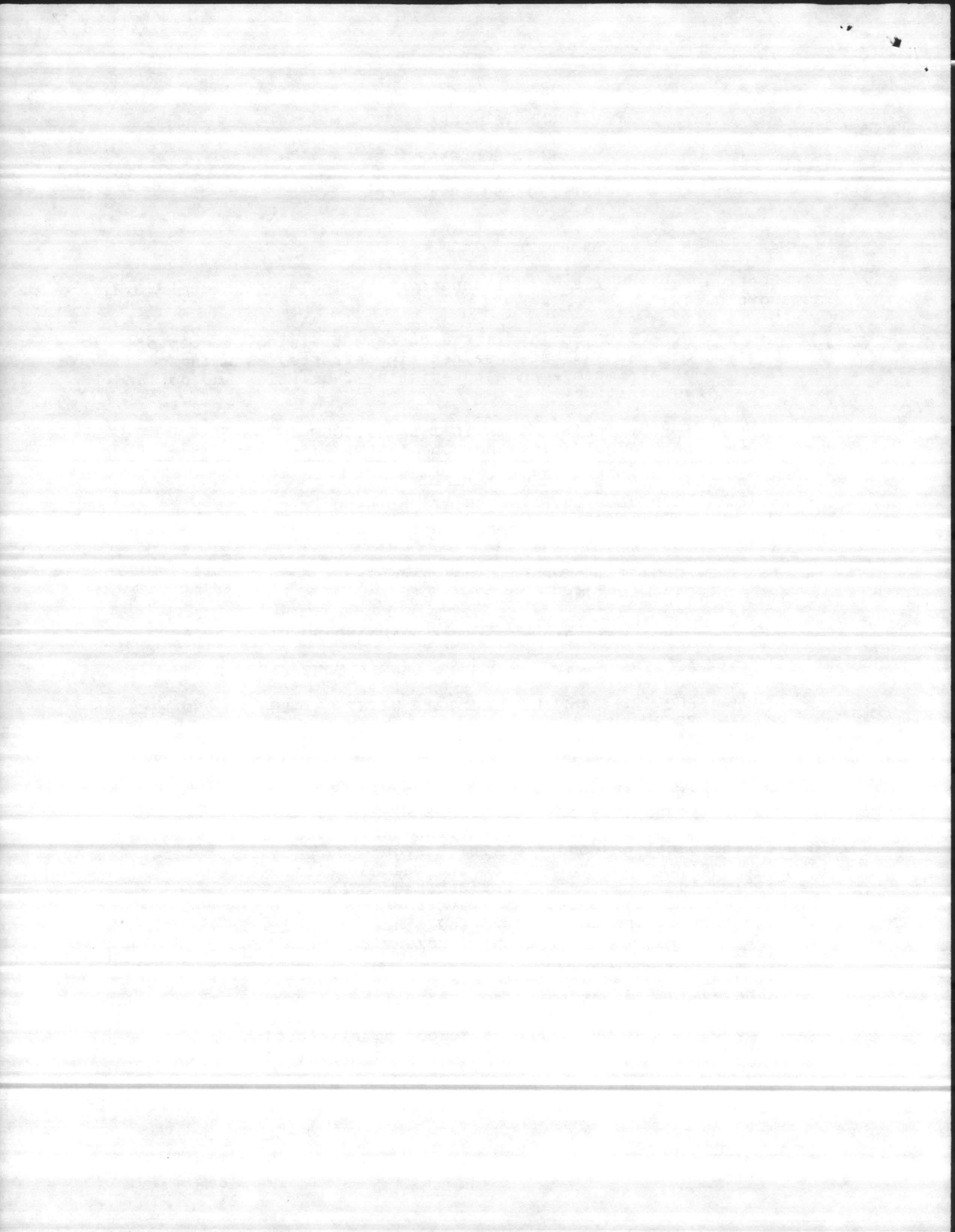
1. DISCUSSION OF ALTERNATIVES

Request a revised list of alternatives be included in the S.O.W. as shown below:

- I. NO ACTION: maintain the current training program of on-base and off-base training efforts, assuming no major improvements to existing facilities and no land acquisition.
- II. IMPROVE EXISTING FACILITIES/WITHOUT LAND ACQUISITION: per Special Training Analysis Concepts B & D.
- III. ACQUIRE & DEVELOP ADDITIONAL LAND & IMPROVE EXISTING FACILITIES: per Special Training Analysis Preferred Concept Plan.
- IV. ACQUIRE & DEVELOP LAND NEARBY BUT NOT CONTIGUOUS TO CAMP LEJEUNE
- V. ACQUIRE & DEVELOP I.P.C. LAND AND NO OTHER AREAS.
- VI. ACQUIRE & DEVELOP I.P.C. LAND & SOME PARCELS.
- VII. ACQUIRE & DEVELOP ALL LAND WITHIN HIGHWAY BOUNDARIES PROPOSED.

We recognize the requirement to describe the "NO ACTION" alternative means the contractor must examine in detail the overall training land uses and environmental impacts basewide. This is the baseline condition which argues for acquiring more land and conforms to the Purpose and Need Section. This description includes the current endangered species situation, noise, wetlands, airspace, waterway traffic, as well as socio-economic issues, including costs and other indirect effects of off-base training due to current land/environmental restrictions.

The SOW should stress that each of the above alternatives should be evaluated according to the ability to accomplish the Marine Corps mission of combat readiness training. This factor should be the major criteria for selecting/eliminating an alternative for final consideration of the "short list".



2. DISCUSSION OF "PURPOSE AND NEED"

This section should require the consultant to:

a. Describe the general situation faced by FMF units at Camp Lejeune in terms of emerging requirements toward more mechanized, sophisticated, longer-ranged weapons, and the effects on Camp Lejeune training assets in recent years: i.e., more space required but less available due to land use requirements; more competition among units for use of training areas, etc.

b. Delineate the Marine Corps training requirements, as presently defined in Marine Corps force modernization policies, which must be met by FMF units training at MCB: tactical equipment being fielded, and planned command structure changes, if any, which will create significant needs for training facilities, land, and/or environmental issues to be addressed.

c. Review the conclusions reached by the Special Training Analysis, in summary form, by restating its purpose to quantify and compare required versus available land, its methodology, and assumptions; describe the documented training area shortfalls, and Recommendations.

3. PUBLIC INVOLVEMENT (PI) REQUIREMENTS

We encourage an aggressive PI effort by the contractor during EIS process.

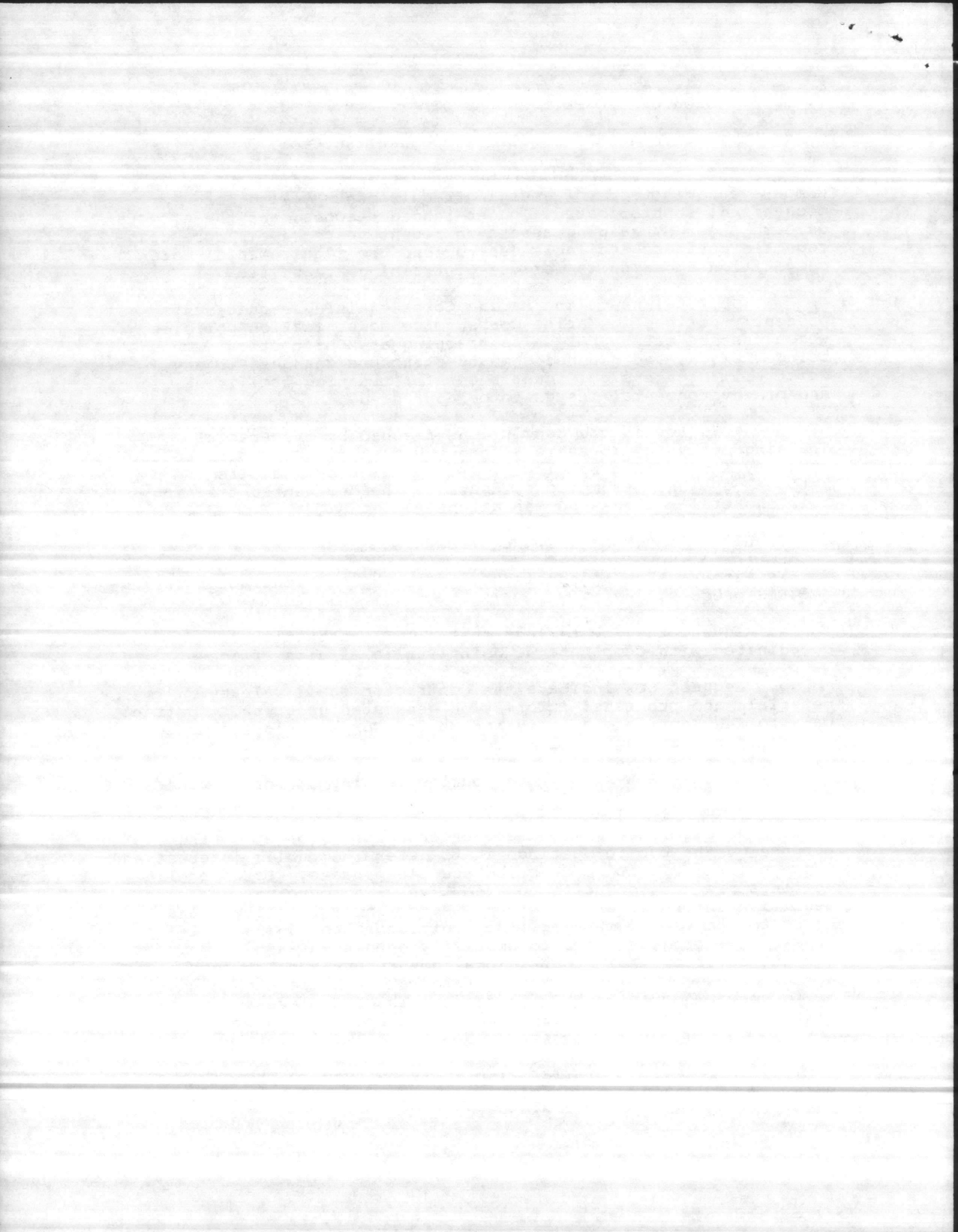
a. Request the SOW reflect that all PI activities be coordinated with Camp Lejeune Joint Public Affairs Office--

b. Request SOW indicate the contractor shall release materials and published information generated under this contract only to the Dept. of the Navy and Marine Corps officials or to others upon their approval.

c. Request SOW substitute "public meeting or forum" vice public hearings (pgs. 8,12,15,16) as a means of PI.

As described in the section on Scoping, page 16, the purpose of the public meetings is to determine public interest and concerns, as well as to describe the EIS process. Large public meetings are not conducive to effectively introducing complex or sensitive information to a group. Accordingly we request that, prior to the public meeting, the contractor should initially present the project scope to smaller groups such as citizen/environmental groups, local government bodies, regulatory agencies, etc. Following these presentations, the public meeting or forum would then be held to present the EIS process and hear different points of view expressed in a non-confrontational setting.

We request a similar PI process be used to present the DEIS. For planning purposes, ten (10) presentations should be used for scoping and DEIS processes.



4. AGENCY CONTACTS.

Request addition to SOW on page 12 "Services to be provided", and page 13 "Telephone interviews" to require contractor to contact major agencies and International Paper Co. during the conduct of the research on environmental data and regulatory policy. Agencies to contact should include:

U.S. SOIL CONSERVATION SERVICE	RALEIGH, N.C.
FEDERAL AVIATION ADMINISTRATION	ATLANTA, GA
U.S. CORPS OF ENGINEERS	WILMINGTON, NC
U.S. FISH AND WILDLIFE SERVICE	ASHEVILLE, NC
N.C. DIV OF COASTAL MANAGEMENT	RALEIGH, NC
N.C. DIVISION OF CULTURAL RESOURCES (STATE HISTORIC PRESERV. OFCR)	RALEIGH, NC
N.C. DIV OF ENVIR. MANAGEMENT (WATER QUALITY SECTION)	RALEIGH, NC
N.C. DEPT OF TRANSPORTATION	RALEIGH, NC
N.C. DIV OF WILDLIFE RESOURCES	RALEIGH, NC
N.C. DIV OF MARINE FISHERIES	MOREHEAD CITY, NC
N.C. DIV OF FOREST RESOURCES	RALEIGH, NC

5. LAND USE AND MANAGEMENT PLAN

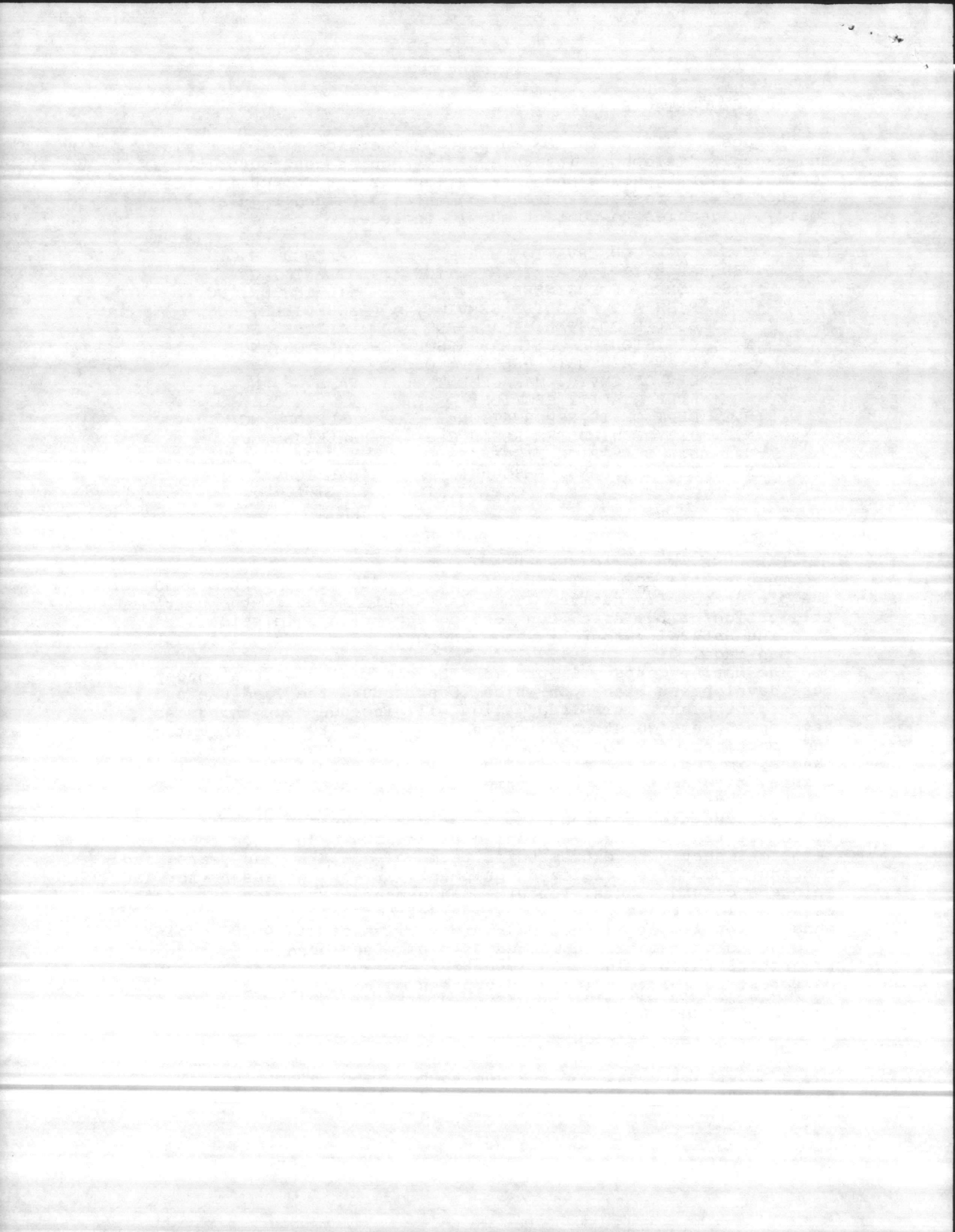
Request the SOW include a requirement to develop this plan for the preferred alternative. The plan should identify the best utilization of the area, considering the training mission, existing natural resources, and land use constraints, both natural and man-made.

The Marine Corps will provide the contractor with a conceptual development plan upon which to structure the land use and management plan. This information will include such things as development and construction plans for road network improvements and locations of major training facilities such as live fire ranges, impact areas, mechanized maneuver areas, artillery firing points, bivouac sites, helicopter landing zones, etc.

The land use and management plan must also reflect the extent of resources required annually to maintain the training area and avoid creating adverse environmental impacts. The required resources should be expressed in terms of dollars, man-years, and numbers/types of specialized equipment, if any, necessary for land maintenance and natural resource management. Examples of management considerations which should be defined include acres to be managed for timber production, number/miles of roads and drainage ditches to be maintained, acres of prescribed burning, and priorities for burning. An important element of the plan should be forest fire prevention and suppression requirements.

6. NOISE ASSESSMENT

Request the SOW (page 12, Specific services to be provided) add a the requirement for the contractor to develop a noise assessment. Suggest add the following: "Prepare a Noise Zone



Assessment Map: A zone map will be prepared in accordance with established criteria and mathematical model as used by the U.S. Army Environmental Hygiene Agency. The zone map will be developed by the contractor using data on the number and types of weapons to be fired and the extent of aircraft operations. The contractor is responsible for compiling this data in a usable format for the model following interviews with selected Marine Corps personnel.

"The zone map will be overlaid on the training area map, scale 1:50,000, of the preferred alternative. Where Zones II and III extend beyond Base boundaries, those properties will be identified on a larger scale map (no smaller than 1"=400') and rated as to their sensitivity to the corresponding zone in which they lie. Criteria for rating will be those from "Guidelines for Considering Noise in Land Use Planning and Control, Federal Interagency Committee on Urban Noise, June, 1980.

"A noise analysis will be developed and provided as an Appendix to the DEIS. The format will be suitable for separate distribution for agency and public review, if desired by the Marine Corps.

"The analysis will identify existing and potential incompatible lands within Zones II and III off-base. Data will include and estimate of land values and an indication of types of development which will be desirable and compatible with the zone in which they fall. Recommendations will include means of reducing the noise; therefore eliminating or reducing the impact off-base. Consideration will be given to resiting of sources, sound suppression measures, regulating operating hours, etc. within mission requirements. If mitigation cannot suitably reduce the impact off-base, then the recommendation should be made as how to initiate off-base coordination. A discussion will be presented of mitigating efforts, present and future, which the Marine Corps can take and actions the community can take to prevent increased off-base noise problems.

7. DISCUSSION OF SOCIO-ECONOMIC EFFECTS

Request the SOW clarify the following work to be done because an adequate assessment in the EIS involving social and economic impacts is as important as an assessment of biophysical impacts.

a. The discussion of each alternative must present the effects of that option on social factors such as relocation of cemeteries, displacement of individuals, change in character of adjacent community, social services, and recreational and cultural opportunities and facilities.

b. The discussion of each alternative must present the effects on economic factors such as land and property values, employment, income, net change in government revenues, and regional economic activity.

c. To obtain the latest demographic and economic data, the contractor should consult with the Neuse River Council of Governments, Attn: Mr. Roy Fogle, Executive Director, P.O. Box 1717, New Bern, NC 28560.

