

FILE FOLDER

DESCRIPTION ON TAB:

6241/2

- Outside/inside of actual folder did not contain hand written information
- Outside/inside of actual folder did contain hand written information
*Scanned as next image

1985

UNITED STATES MARINE CORPS
Marine Corps Base
Camp Lejeune, North Carolina 28542-5001

6280/2
FAC
20 FEB 1985

From: Assistant Chief of Staff, Facilities, Marine Corps Base,
Camp Lejeune
To: Base Maintenance Officer
→ Director, Natural Resources and Environmental Affairs

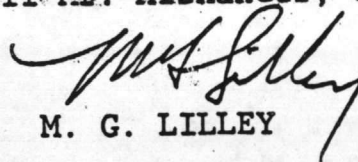
Subj: WASTE OIL HANDLING AND DISPOSAL

Ref: (a) Meeting w/NC Solid and Hazardous Waste Mgmt Branch and
MCB Staff, 24 Jan 85

Encl: (1) CG, MCB ltr MAIN/WAS/cmm 6280 dtd 29 Mar 82 w/encl

1. During the reference, the improved marketability of waste oil due to collection at the motor pool was discussed. Request that BMAIN provide an updated copy of the enclosure to NREAD and to this office. Further request that NREAD provide laboratory analyses, which reflect the contents of their waste oil tanks on a representative basis.

2. In order to pursue the option of the "term contract" with DPDS as well as provide a timely response to the State of North Carolina, request the laboratory results be provided by 1 March 1985. For further info on this matter call Mr. Alexander, ext 3034.


M. G. LILLEY

1952
1953
1954

1955

1956

1957

1958

1959

1960

1961

1962

1963

1964

1965

1966

1967

1968

1969

1970

1971

1972

1973

1974

1975

1976

1977

1978

1979

6241/2
NREAD
6 August 1985

From: Supervisory Chemist, Water Quality Control Lab, Environmental
Branch
To: Director, Natural Resources and Environmental Affairs Division
→ Via: Supervisory Ecologist, Environmental Branch

Subj: WASTE OIL HANDLING AND DISPOSAL; RELATED LABORATORY ANALYSIS

Ref: (a) AC/S FAC MCB ltr 6280/2 FAC of 20 Feb 1982

Encl: (1) Excerpts from JTC Environmental Consultants, Inc.
Report No. 54 Dated 6-28-85

1. The enclosure is submitted as requested by the reference.

ELIZABETH A. BETZ

Blind copy to:
Supv Ecologist

Writer: E. Betz, NREAD, 5977
Typist: A. Blackstock, 6 August 1985

Hand copy
of the original

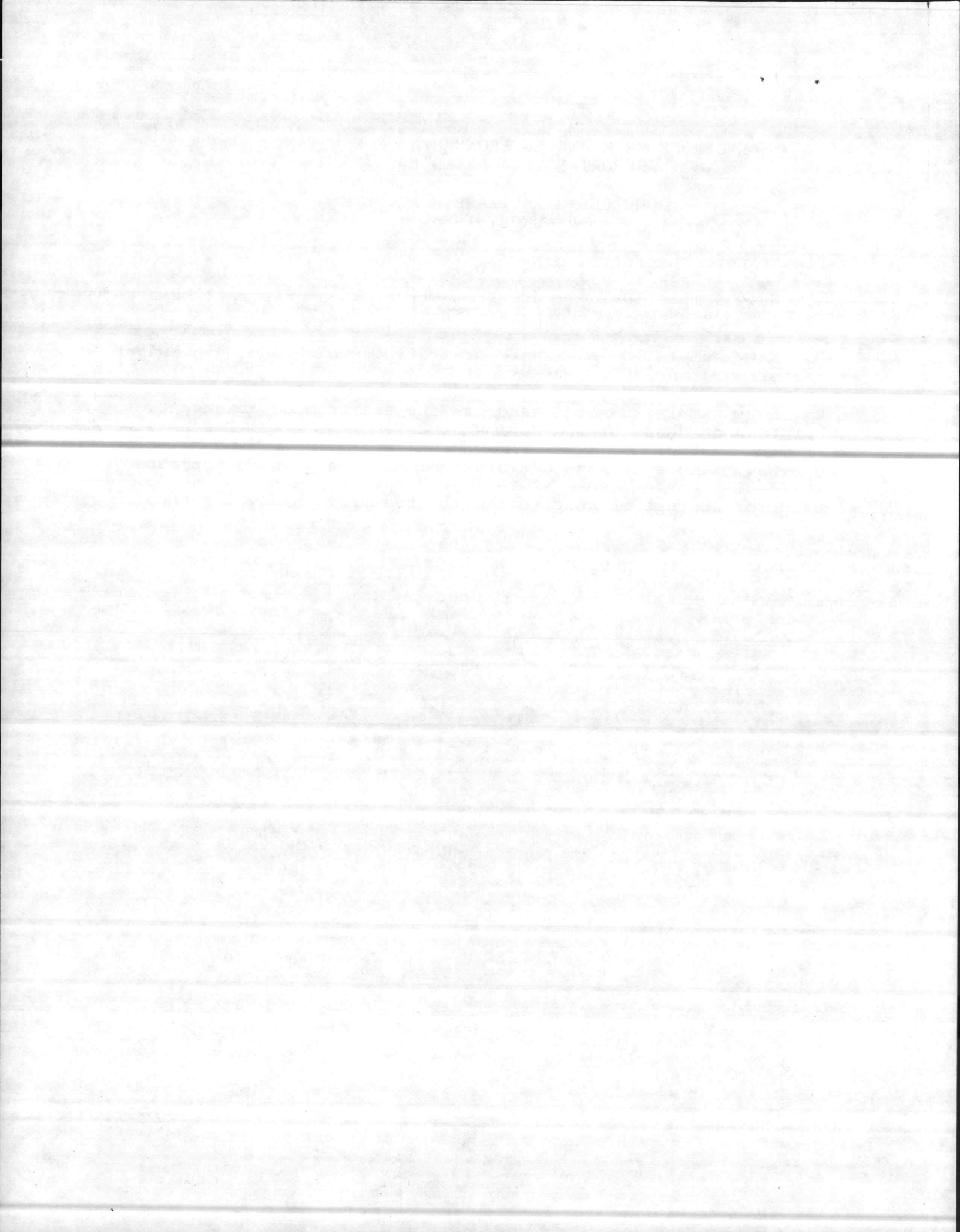
EXCERPTS FROM JTC ENVIRONMENTAL CONSULTANTS, INC.
REPORT NO. 54 DATED 6-28-85

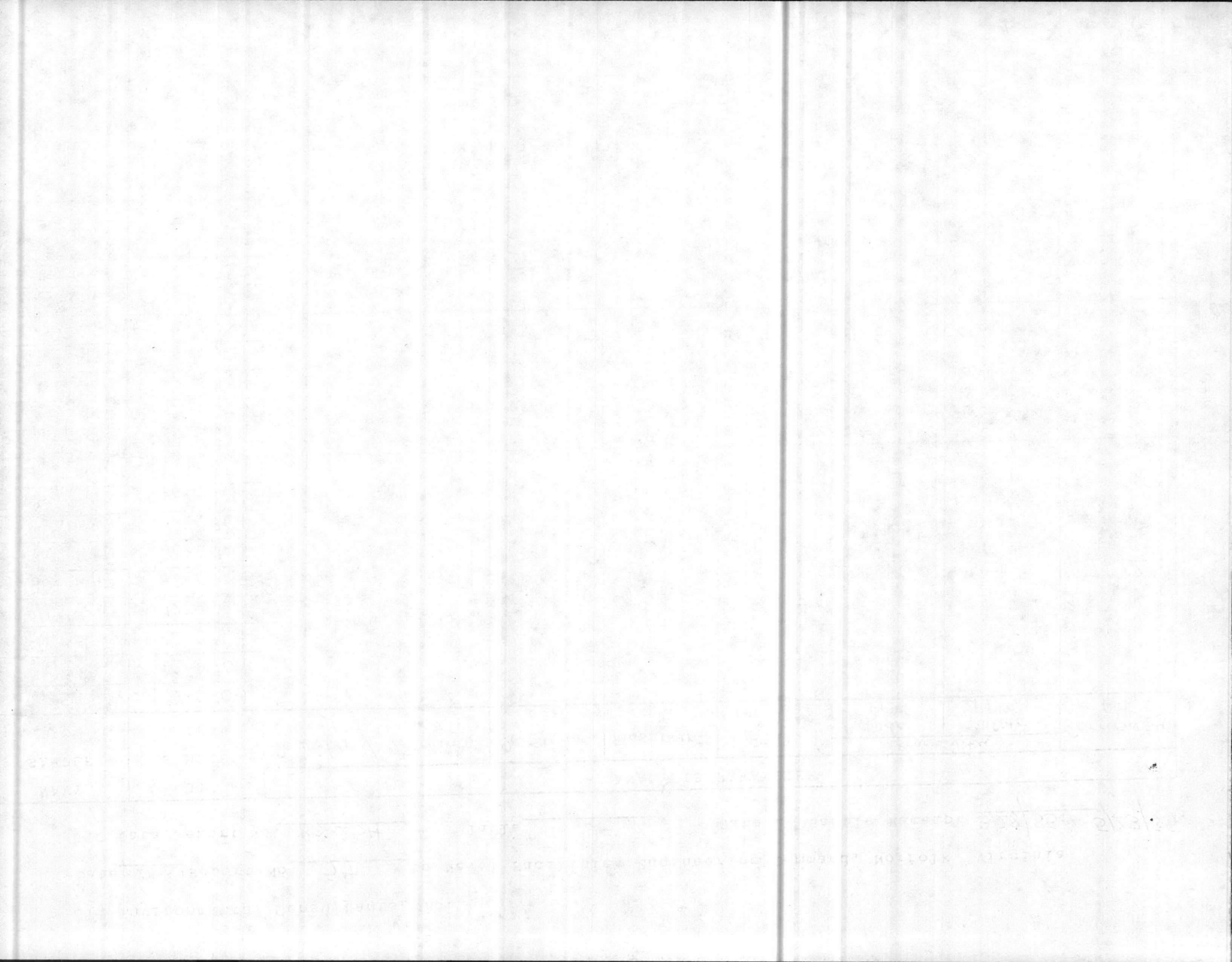
COMPILED BY ELIZABETH A. BETZ
6 AUGUST 1985

Please note the following:

- a. Navy sample ID #4-12 are from oil tanks at Aircraft Maintenance Shops at Marine Corps Air Station, New River.
- b. Navy sample ID #13-17 are from oil tanks at 2nd Maintenance Battalion, 2nd FSSG.
- c. Navy sample ID #18-21 and 25A & B are from oil tanks at Maintenance Shops of 2nd Marine Division.
- d. Navy sample ID #24A & B are from Base Maintenance operated waste oil storage tanks at the old hospital, near Bldg H-20, used for storage of waste oil collected from throughout the BAS.

(ENCLOSURE 1)





JTC Environmental Consultants, Inc.

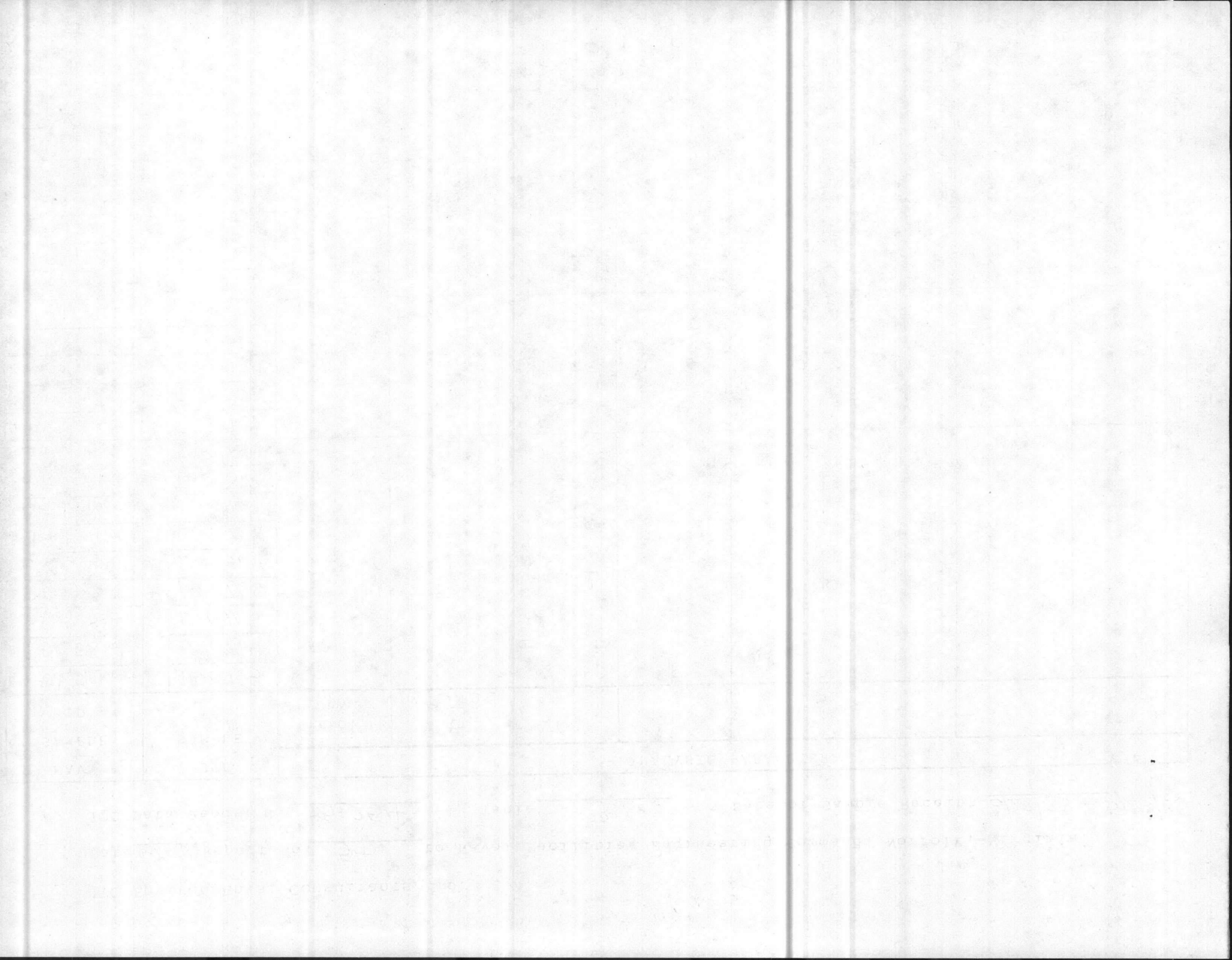
Date 6-28-85 Report No. 54 to Naval Facilities Engineering Command, Norfolk, Virginia

JTC Data Report No. 85-254

Table 3

Date of Sample Receipt 3/28/85 + 5/23/85

NAVY SAMPLE ID	JTC SAMPLE ID	ANALYSIS PARAMETER								
		Phenol ppm	PCB ug/g	VOA						
#4 Bldg 515 hanger	12-0763	20	< 1	VOA See attached sheet						
#5 Bldg 518 hanger	12-0764									
#6 Bldg 504	12-0765									
#7 Bldg 504	12-0766									
#8 Bldg 4147	12-0767									
#9 Bldg 4100	12-0768									
#10 Bldg 4108 comp	12-0769									
#11 Bldg 4108	12-0770									
#12 Bldg 4106	12-0771									
#13 Bldg 1601	12-0772	30	< 1	VOA See attached sheet						
#14 Bldg 1607	12-0773									
#15 Bldg 909	12-0774									
#16 Bldg 901	12-0775									
#17 Bldg 902	12-0776									
#18 Bldg 1205-1206	12-0911	15	< 1	VOA See attached sheet						
#19 Bldg 1505-1506	12-0912									
#20 Bldg 1450	12-0913									
#21 Bldg 1854	12-0914									
#22 Bldg A2	12-0915									
#25A Bldg 1775	12-0916									
#25B Bldg 1775	12-0917									
#24A Bldg H20	12-0918	510	< 1	" +						
#24B Bldg H20	12-0919	x	< 1	" +						



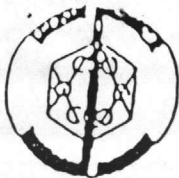
JTC Environmental Consultants, Inc.

Date 6-28-85 Report No. 54 to Naval Facilities Engineering Command, Norfolk, Virginia

JTC Data Report No. 85-254 Table 4 Date of Sample Receipt 3/28/85 + 5/23/85

NAVY SAMPLE ID	JTC SAMPLE ID	ANALYSIS PARAMETER															
		As mg/kg	Ba mg/kg	Cd mg/kg	Cr mg/kg	Pb mg/kg	Hg mg/kg	Se mg/kg	Ag mg/kg								
#4 Bldg 515 hanger	12-0763	<1.0	<20	<0.5	1.0	37.2	<0.10	<0.40	<1.0								
#5 Bldg 518 hanger	12-0764																
#6 Bldg 504	12-0765																
#7 Bldg 504	12-0766																
#8 Bldg 4147	12-0767																
#9 Bldg 4100	12-0768																
#10 Bldg 4108 comp	12-0769																
#11 Bldg 4108	12-0770																
#12 Bldg 4106	12-0771																
#13 Bldg 1601	12-0772									<1.0	<20	6.0	1.4	48.9	<0.10	1.1	1.1
#14 Bldg 1607	12-0773																
#15 Bldg 909	12-0774																
#16 Bldg 901	12-0775																
#17 Bldg 902	12-0776																
#18 Bldg 1205-1206	12-0911	<1.0	<20	4.7	4.3	336	<0.10	1.6	<1.0								
#19 Bldg 1505-1506	12-0912																
#20 Bldg 1450	12-0913																
#21 Bldg 1854	12-0914																
#22 Bldg A2	12-0915																
#25A Bldg 1775	12-0916																
#25B Bldg 1775	12-0917																
#24A Bldg H20	12-0918	<1.0	<20	2.5	24.4	42.6	<0.10	1.7	<1.0								
#24B Bldg H20	12-0919	<1.0	<20	0.5	42.2	32.4	<0.10	2.0	1.0								





JTC ENVIRONMENTAL CONSULTANTS, INC.
PRIORITY POLLUTANT ANALYSIS DATA SHEET

VOLATILE FRACTION

JTC SAMPLE # 12-0763 to 12-0711 Composite PROJECT NO. NF-12
CLIENT SAMPLE ID 4-12 1:5000 Dilution DATE RECEIVED 3/28/85
METHOD NO. 624 DETECTION LIMIT 50,000 ug/lit

PARAMETER	RESULT ug/lit	PARAMETER	RESULT ug/lit
2V acrolein	N.D.	32V 1,2-dichloropropane	N.D.
3V acrylonitrile	N.D.	33V 1,3-dichloropro- pylene	N.D.
4V benzene 15,700 *	N.D.	38V ethylbenzene 63,400	N.D.
6V carbon tetrachloride	N.D.	44V methylene chloride	N.D.
7V chlorobenzene	N.D.	45V methyl chloride	N.D.
10V 1,2-dichloroethane	N.D.	46V methyl bromide	N.D.
11V 1,1,1-trichloro- ethane	N.D.	47V bromoform	N.D.
13V 1,1-dichloroethane	N.D.	48V dichlorobromo- methane	N.D.
14V 1,1,2-trichloro- ethane	N.D.	49V trichlorofluoro- methane	N.D.
15V 1,1,2,2-tetra- chloroethane	N.D.	50V dichlorodifluoro- methane	N.D.
16V chloroethane	N.D.	51V chlorodibromomethane	N.D.
19V 2-chloroethylvinyl ether	N.D.	85V tetrachloroethylene	N.D.
23V chloroform	N.D.	86V toluene 134,000	N.D.
29V 1,1-dichloroethylene	N.D.	87V trichloroethylene	N.D.
30V 1,2-trans-dichloro- ethylene	N.D.	88V vinyl chloride	N.D.

total xylenes 274,000

N.D. = NOT DETECTED

N.A. = NOT APPLICABLE/ANALYZED

*Below method detection limit

1912

1913

1914

1915

1916

1917

1918

1919

1920

1921

1922

1923

1924

1925

1926

1927

1928

1929

1930

1931

1932

12
HAGOR

12

12

12

12

12



JTC ENVIRONMENTAL CONSULTANTS, INC.
PRIORITY POLLUTANT ANALYSIS DATA SHEET

VOLATILE FRACTION

JTC SAMPLE # 12-0772 to 12-0776 composite PROJECT NO. NF-12
CLIENT SAMPLE ID 13-17 1:5000 Dilution DATE RECEIVED 3/28/85
METHOD NO. 624 DETECTION LIMIT 50,000 ug/lit

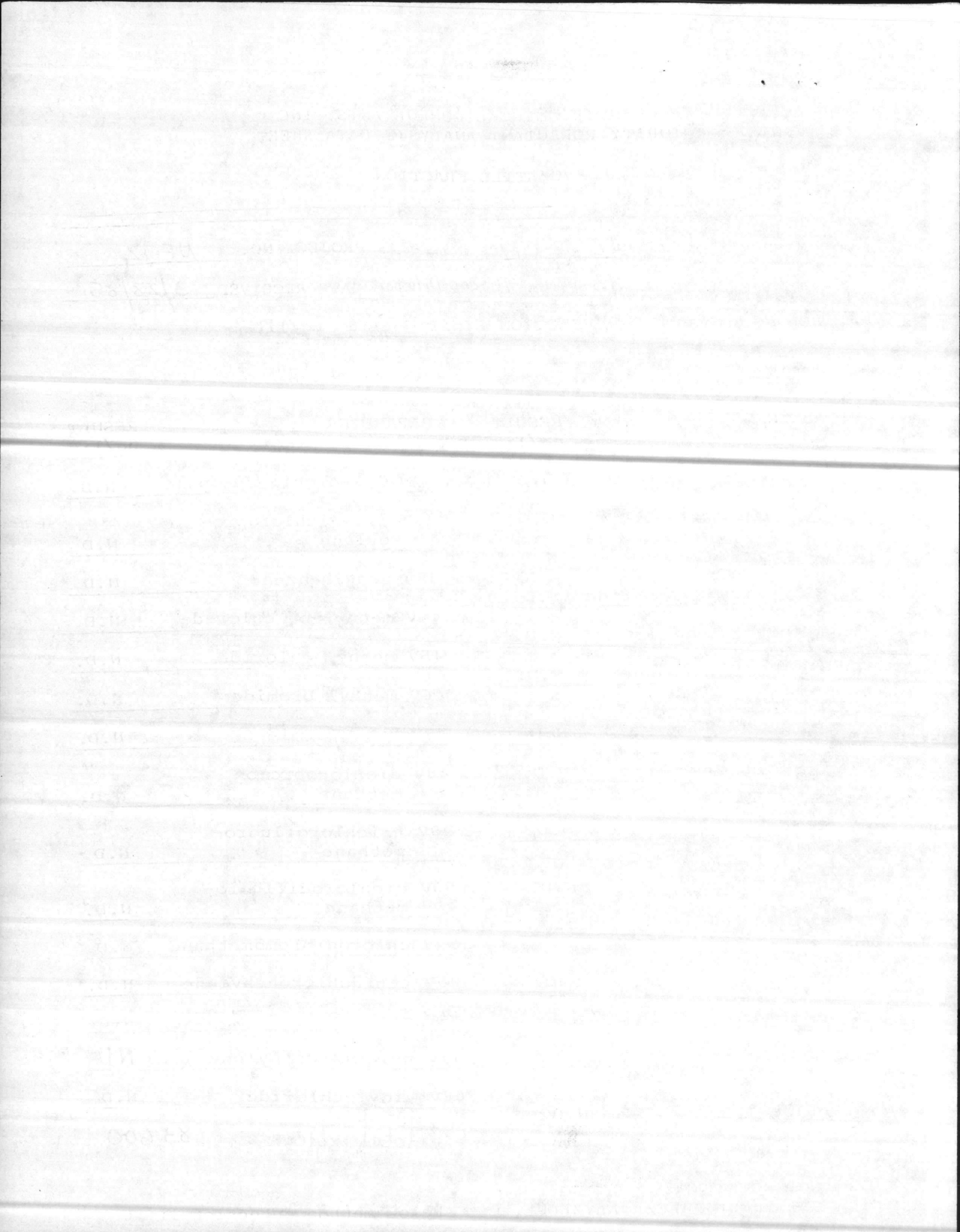
PARAMETER	RESULT	PARAMETER	RESULT
	ug/lit		ug/lit
2V acrolein	N.D.	32V 1,2-dichloropropane	N.D.
3V acrylonitrile	N.D.	33V 1,3-dichloropro- pylene	N.D.
4V benzene	N.D.	38V ethylbenzene	N.D.
6V carbon tetrachloride	N.D.	44V methylene chloride	N.D.
7V chlorobenzene	N.D.	45V methyl chloride	N.D.
10V 1,2-dichloroethane	N.D.	46V methyl bromide	N.D.
11V 1,1,1-trichloro- ethane	N.D.	47V bromoform	N.D.
13V 1,1-dichloroethane	N.D.	48V dichlorobromo- methane	N.D.
14V 1,1,2-trichloro- ethane	N.D.	49V trichlorofluoro- methane	N.D.
15V 1,1,2,2-tetra- chloroethane	N.D.	50V dichlorodifluoro- methane	N.D.
16V chloroethane	N.D.	51V chlorodibromomethane	N.D.
19V 2-chloroethylvinyl ether	N.D.	85V tetrachloroethylene	N.D.
23V chloroform	N.D.	86V toluene	77,900 N.D.
29V 1,1-dichloroethylene	N.D.	87V trichloroethylene	ND
30V 1,2-trans-dichloro- ethylene	N.D.	88V vinyl chloride	N.D.

total xylenes 83,600

N.D. = NOT DETECTED

N.A. = NOT APPLICABLE/ANALYZED

*Below method detection limit





JTC ENVIRONMENTAL CONSULTANTS, INC.
PRIORITY POLLUTANT ANALYSIS DATA SHEET

VOLATILE FRACTION

JTC SAMPLE # 12-0911 to 12-0917 Composite PROJECT NO. NF-12
CLIENT SAMPLE ID 18-22, 25A, 25B ^{1:5000 Dilution} DATE RECEIVED 5/23/85
METHOD NO. 624 DETECTION LIMIT 50,000 ug/lit

PARAMETER	RESULT	PARAMETER	RESULT
	ug/lit		ug/lit
2V acrolein	N.D.	32V 1,2-dichloropropane	N.D.
3V acrylonitrile	N.D.	33V 1,3-dichloropro- pylene	N.D.
4V benzene <u>111,000</u>	N.D.	38V ethylbenzene <u>93,600</u>	N.D.
6V carbon tetrachloride	N.D.	44V methylene chloride	N.D.
7V chlorobenzene	N.D.	45V methyl chloride	N.D.
10V 1,2-dichloroethane	N.D.	46V methyl bromide	N.D.
11V 1,1,1-trichloro- ethane	N.D.	47V bromoform	N.D.
13V 1,1-dichloroethane	N.D.	48V dichlorobromo- methane	N.D.
14V 1,1,2-trichloro- ethane	N.D.	49V trichlorofluoro- methane	N.D.
15V 1,1,2,2-tetra- chloroethane	N.D.	50V dichlorodifluoro- methane	N.D.
16V chloroethane	N.D.	51V chlorodibromomethane	N.D.
19V 2-chloroethylvinyl ether	N.D.	85V tetrachloroethylene	N.D.
23V chloroform	N.D.	86V toluene <u>456,000</u>	N.D.
29V 1,1-dichloroethylene	N.D.	87V trichloroethylene	N.D.
30V 1,2-trans-dichloro- ethylene	N.D.	88V vinyl chloride	N.D.

total xylenes 437,000

N.D. = NOT DETECTED
N.A. = NOT APPLICABLE/ANALYZED

*Below method detection limit

1912

1913

1914

1915

1916

1917

1918

1919

1920

1921

1922

1923

1924

1925

12-20

12-20

12-20

12-20

12-20

6241/2
NREAD
6 August 1985

From: Supervisory Chemist, Water Quality Control Lab, Environmental Branch
To: Director, Natural Resources and Environmental Affairs Division
Via: Supervisory Ecologist, Environmental Branch
Subj: WASTE OIL HANDLING AND DISPOSAL; RELATED LABORATORY ANALYSIS
Ref: (a) AC/S FAC MCB ltr 6280/2 FAC of 20 Feb 1982
Encl: (1) Excerpts from JTC Environmental Consultants, Inc.
Report No. 54 Dated 6-28-85

1. The enclosure is submitted as requested by the reference.

ELIZABETH A. BETZ

Blind copy to:
Supv Ecologist

Writer: E. Betz, NREAD, 5977
Typist: A. Blackstock, 6 August 1985

1952

1. The first part of the report deals with the general situation in the country.

2. The second part of the report deals with the economic situation in the country.

3. The third part of the report deals with the social situation in the country.

4. The fourth part of the report deals with the political situation in the country.

5. The fifth part of the report deals with the cultural situation in the country.

6. The sixth part of the report deals with the international situation in the country.

THE END