

T-6280

6280  
NREAD  
11 June 1984

From: Commanding General, Marine Corps Base, Camp Lejeune  
To: Officer in Charge, Naval Energy and Environmental Support  
Activity, Port Hueneme, California 93041

Subj: DISCHARGE MONITORING REPORTS (DMRs) FOR WASTEWATER

Ref: (a) LANTNAVFACENGCOM ltr 114:DPG:pkk of 23 Jan 1984

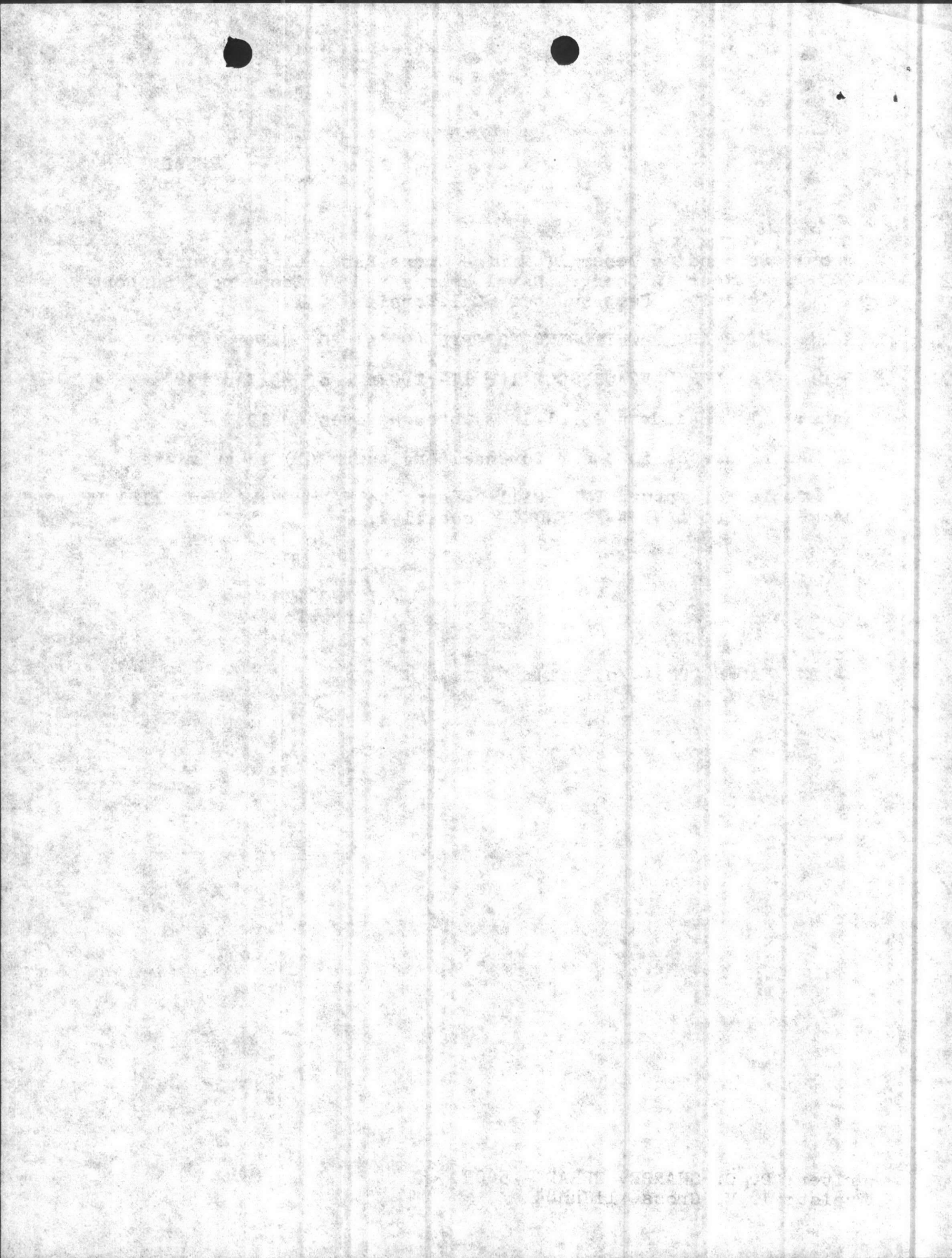
Encl: (1) DMRs from April 1983 through November 1983

1. As requested in the reference, enclosure (1) is submitted.
2. Copies of future DMRs will be sent to NAVENENSVA Code 1101-WF as well as to LANTNAVFACENGCOM Code 1142.

J. I. WOOTEN  
By direction

Copy to:  
LANTNAVFACENGCOM (w/o Encl)

Writer: D. D. SHARPE, NREAD - 5003  
Typist: J. V. Cross, 11Jun84



APR 1983 ON

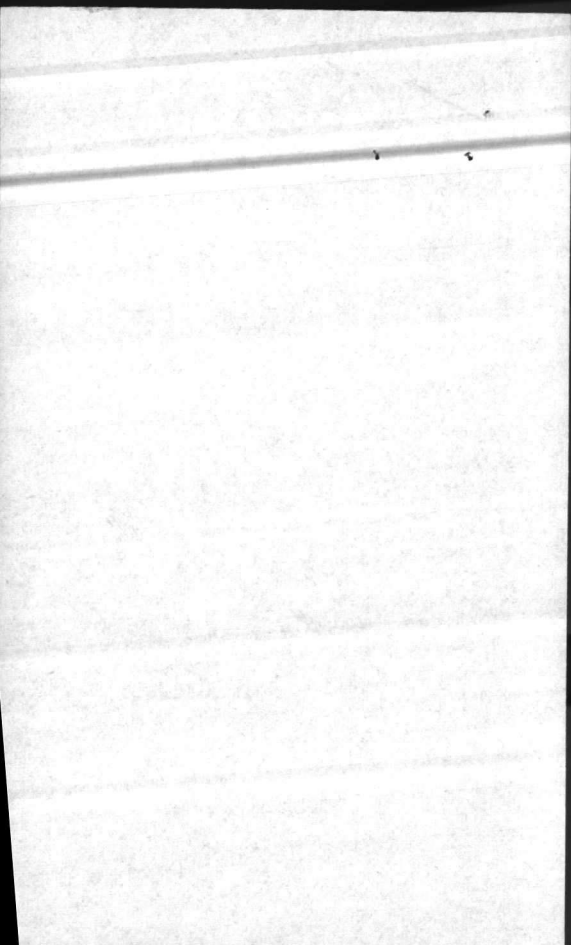
ATTN: CODE 110I-WE

OFFICER IN CHARGE

NE+ESA

PORT HOVENEME, CA

93043



NATURAL RESOURCES AND ENVIRONMENTAL AFFAIRS DIVISION  
Marine Corps Base  
Camp Lejeune, North Carolina 28542

2-7-84  
Date

From: Director

To: *Danny*

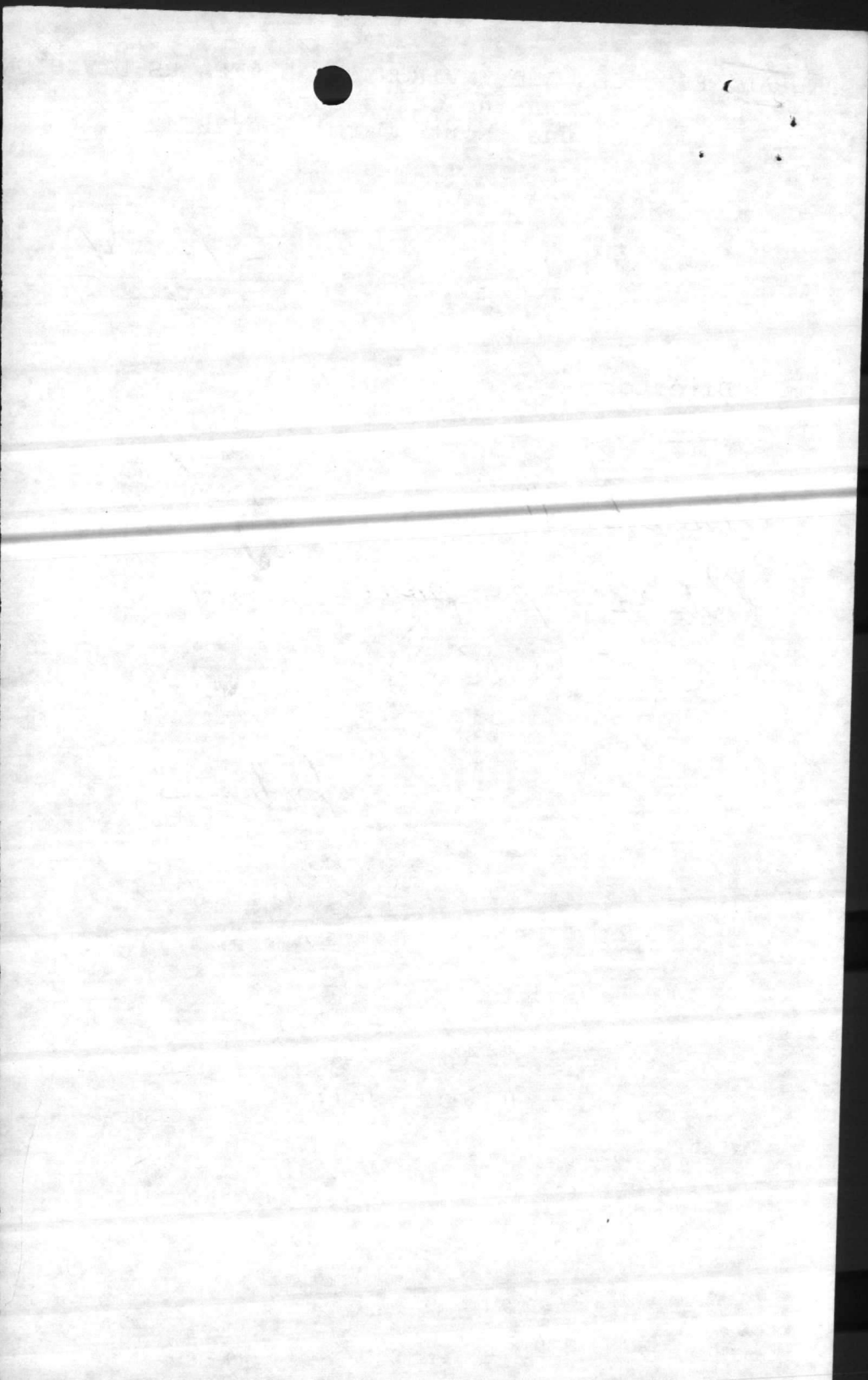
*Attached*

*Please prepare a reply  
with (DMRS)*

*John*

---

*DID - 22 FEB 84*  
*Betsy - Call DAVE Goodwin*  
*Find out what DMRS NEESA*  
*Needs - Make copies - And*  
*Prepare cover letter forwarding*  
*them which says we will*  
*be sending both Lant Div*  
*and NEESA copies in*  
*the future DDG*



ASSISTANT CHIEF OF STAFF, FACILITIES  
HEADQUARTERS, MARINE CORPS BASE

DATE 27 Jan 1984

TO: NREA

BASE MAINT O

DIR, FAMILY HOUSING

PUBLIC WORKS O

DIR, UNACCOMPANIED PERS HSG

COMM-ELECT O

BASE FIRE CHIEF

MOTOR TRANSPORT O

ATTN: Mr. Wooten

① Attached is forwarded for info/action.

2. Please initial, or comment, and return all papers to this office.

3. Your file copy

*J. M. Fitzgerald*  
By dir.

"LET'S THINK OF A FEW REASONS  
WHY IT CAN BE DONE"



*[Faint, illegible handwritten text]*

*[Faint, illegible printed text, possibly a header or footer]*





DEPARTMENT OF THE NAVY  
ATLANTIC DIVISION  
NAVAL FACILITIES ENGINEERING COMMAND  
NORFOLK, VIRGINIA 23511

TELEPHONE NO.  
(804) 444-9561  
IN REPLY REFER TO:

114:DPG:pkk  
6280

2 3 JAN 1984

From: Commander, Atlantic Division, Naval Facilities Engineering Command  
To: Commanding General, Marine Corps Base, Camp Lejeune  
Commanding General, Marine Corps Air Station, Cherry Point

Subj: Discharge Monitoring Reports (DMRs) for Wastewater

Encl: (1) NAVENENVSA ltr 110I of 28 Nov 1983

1. Enclosure (1) requested copies of MCB CAMP LEJEUNE DMRs. Attempts to copy LANTNAVFACENGCOM's blue ink copies have, however, been unsuccessful; therefore, request MCB CAMP LEJEUNE send requested/future DMRs to NAVENENVSA (and please continue to copy LANTNAVFACENGCOM Code 1142 on future DMRs).
2. Enclosure (1) also requested if MCALF BOGUE field permit has been reissued. LANTNAVFACENGCOM Code 1142 records indicate it has not and that MCON Project P-886 providing a land application system. Request MCAS CHERRY PT advise NAVENENVSA (and LANTNAVFACENGCOM Code 1142) if this status has changed.

*J. R. Bailey*  
J. R. BAILEY  
By direction

Copy to:  
NAVENENVSA



2015

2015

NAVAL ENERGY AND ENVIRONMENTAL SUPPORT ACTIVITY  
PORT HUENEME, CALIFORNIA 93043

TO [ Commander  
Atlantic Division  
NAVFACENCOM  
Norfolk, VA 23511 ]

IN REPLY REFER TO  
110I  
28 Nov 83

X	ITEM	X	ITEM
	THIS ACTIVITY WOULD APPRECIATE RECEIVING COPIES OF THE MATERIAL LISTED BELOW. WE UNDERSTAND THIS IS AVAILABLE WITHOUT COST.	X	MATERIAL LISTED BELOW IS FORWARDED HERewith.
	PLEASE PROVIDE PRICE AND BIBLIOGRAPHIC VERIFICATION FOR ITEMS LISTED BELOW.		MATERIAL LISTED BELOW IS FURNISHED ON LOAN. PLEASE RETURN BY DATE INDICATED OR REQUEST RENEWAL.
	MATERIAL LISTED BELOW, REQUESTED ON THE DATE INDICATED HAS NOT BEEN RECEIVED.		MATERIAL LISTED BELOW, ON LOAN TO YOUR OFFICE, IS OVERDUE. PLEASE RETURN OR REQUEST RENEWAL.

NO. OF COPIES	DESCRIPTION OF MATERIAL
1	NPDES Status Report of 30 Sep 83 for Marine Corps

DATE REQUESTED	DATE DUE	DATE LOANED
----------------	----------	-------------

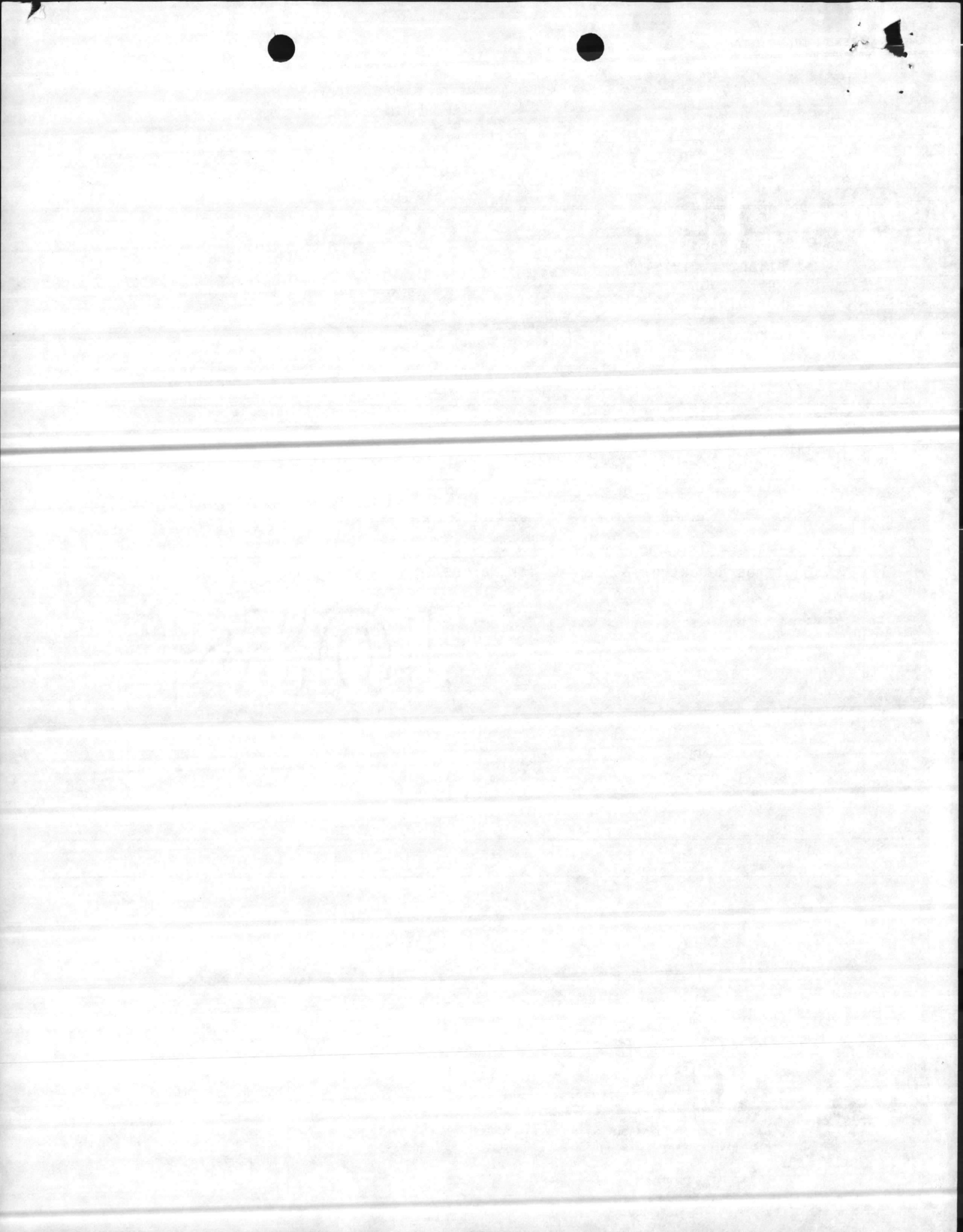
REMARKS

ROUTING CODE (NEESA USE ONLY):  110  111  112  113

SIGNATURE *Wanda Edwards*

[ COMMANDING OFFICER  
NAVAL ENERGY AND ENVIRONMENTAL SUPPORT ACTIVITY  
PORT HUENEME, CA 93043 ]

SENDER'S MAILING ADDRESS  
  
Address reply as shown at left; or reply hereon and return in window envelope.



NPDES STATUS REPORT AS OF 30 SEP 1983 FOR MARINE CORPS-LANTDIV

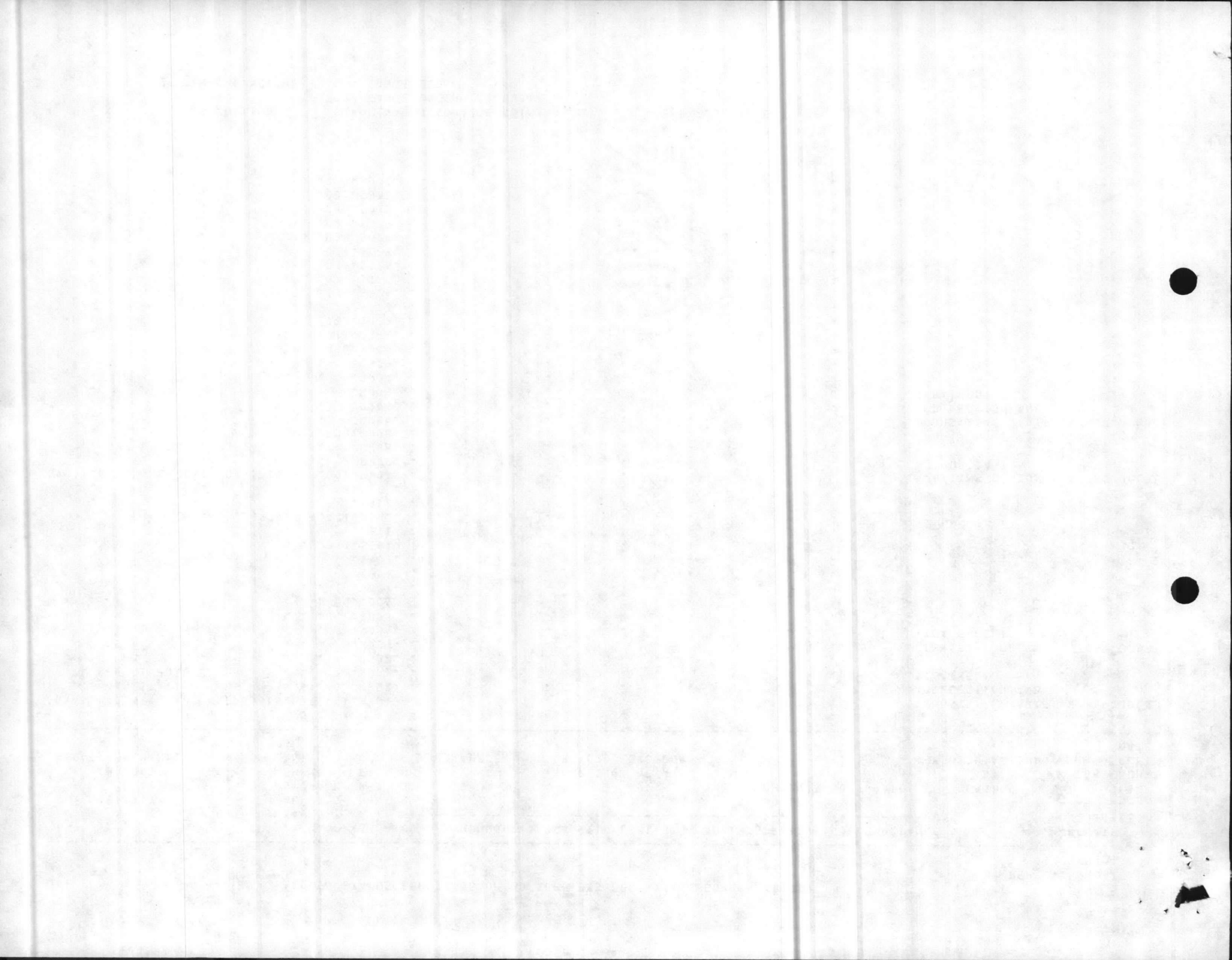
REPORTING DATE  
09/30/83

UIC	ACTIVITY/ LOCATION (MAJRR CLAIMANT)	PERMIT NUMBER	I SA SU UT IH N G	D PS ET RA MT IU TS	S I S A # 4 R N S	S A M A R P T L I N O D G	E H R D I C	NONCOMPLIANCE WITH LIMITS		ADMINISTRATIVE NONCOMPLIANCE		RELATED PROJECT(S)		
								PARAMETER	SAMPLING PERIOD	# OF EXC DONE	SCHEDULE REQUIREMENTS	DUE DATE	REASONS & REMEDIAL ACTIONS	EST PCR #
00146	MARINE CORPS AIR STATION CHERRY PDI NT NC CMC	NC0003816	F	F	XX1	RW01 RW02 SD01 SD02 SD03 SD04 SD05 SD06 SD07 SD08 SD09 001.SS01 SS11 001.SS02 SS12						INDUSTRIAL WASTE COLLECTION AND TREATMENT	W286G JUL83	
		NC0020974	F	X	001	SS02 SS12							OIL SPILL PREVEN TION FACILITY NC0020974 ALSO	W286I JUL84
67001	MARINE CORPS BASE CAMP LEJEU NE NC CMC	NC0003239	F	F	002	RW01 RW02 RW03 003.RW03 RW04 RW05 RW05 RW07 RW09 020.SD20 021.SD21 022.SD22 023.SD23 024.SD24 025.SD25 026.SD25 027.SD27 028.SD28 029.SD29 030.SD30 031.SD31 032.SD32						AWAITING DESIGN AUTHORIZATION	P-790 JUL85	
													INDUSTRIAL WASTE COLLECTION AND TREATMENT	WJ95F JUL83

*Permit reappplied for in June 79 - has new permit been received from EPA yet? Legal file expired 30 Nov 83.*

*Last DMR received Mar 1983 - please send copy of current DMR.*

\* NOTE \*    A = APPLICATION    E = FINAL/DISCHARGE ELIMINATED    X = EXPIRED, RENEWAL PENDING  
               D = DRAFT                R = CANCELLATION REQUESTED  
               F = FINAL & ACTIVE        C = CANCELLED

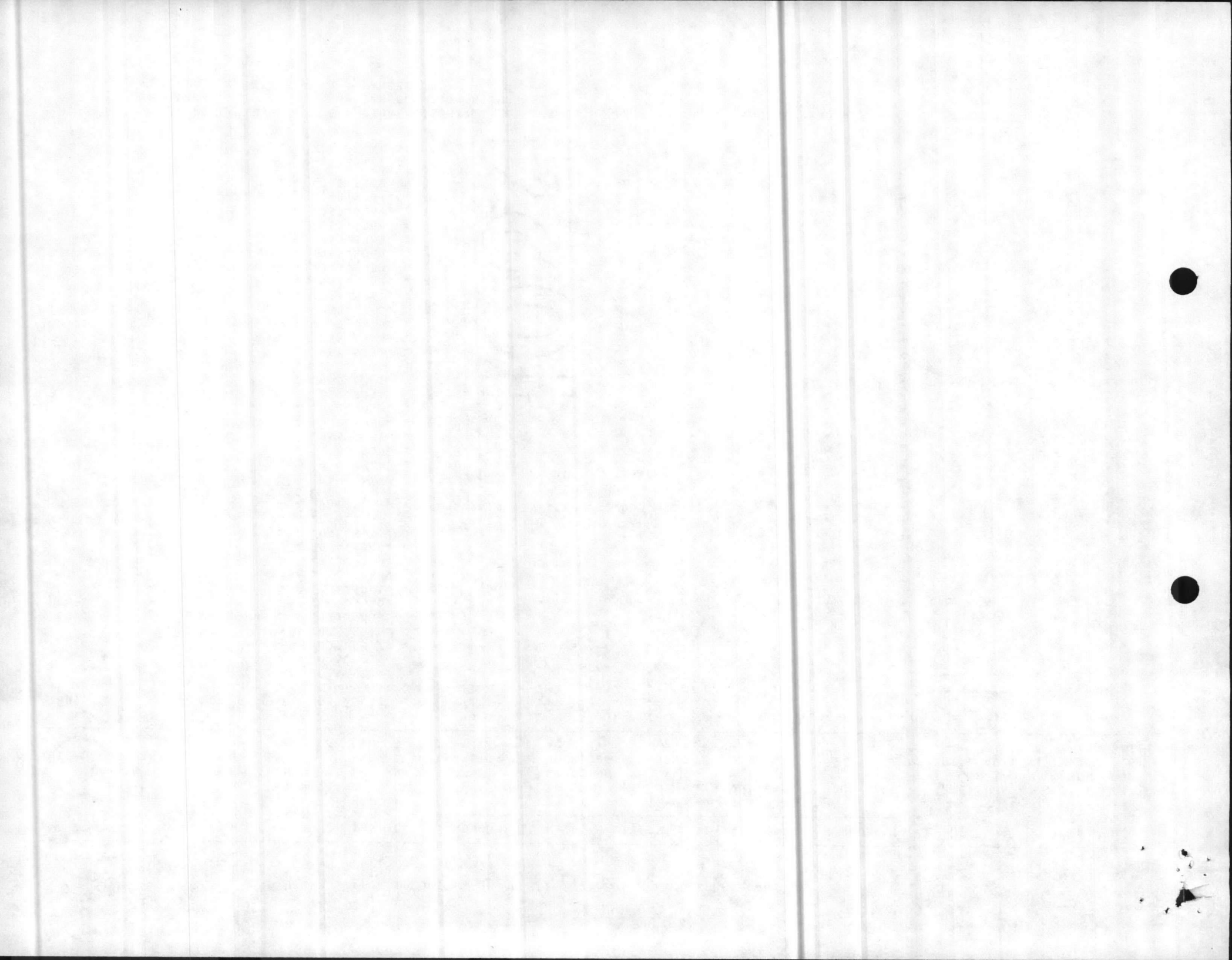


NPDES STATUS REPORT AS OF 30 SEP 1983 FOR MARINE CORPS-LANTDIV

REPORTING DATE  
09/30/83

UIC	ACTIVITY/ LOCATION (MAJOR CLAIMANT)	PERMIT NUMBER	I S A P S I A T H S U E T S M A R T R A C # P T D I H M T H L I N I U R N D I G T S G G N C	NONCOMPLIANCE WITH LIMITS		ADMINISTRATIVE NONCOMPLIANCE			RELATED PROJECT(S)			
				PARAMETER	SAMPLING PERIOD	# OF EXC	# OF ANAL DONE	SCHEDULE REQUIREMENTS	DUE DATE	REASONS & REMEDIAL ACTIONS	PCR #	EST COM- PLET DATE
67001		NC0003239	.033.SD33.	.	.	.	.	.	.	.		
			.034.SD34.	.	.	.	.	.	.	.		
			.035.SD35.	.	.	.	.	.	.	.		
			.036.SD36.	.	.	.	.	.	.	.		
			.037.SD37.	.	.	.	.	.	.	.		
			.038.SD38.	.	.	.	.	.	.	.		
			.039.SD39.	.	.	.	.	.	.	.		
			.040.SD40.	.	.	.	.	.	.	.		
			.041.SD41.	.	.	.	.	.	.	.		
			.042.SD42.	.	.	.	.	.	.	.		
			.043.SD43.	.	.	.	.	.	.	.		
			.044.SD44.	.	.	.	.	.	.	.		
			.045.SD45.	.	.	.	.	.	.	.		
			.046.SD46.	.	.	.	.	.	.	.		
			.047.SD47.Y.PH LABORATORY	.	.10/01/82.003.003.	.	.	.	.	.		
				.	.03/31/83.	.	.	.	.	.		
			.048.SD48.	.	.	.	.	.	.	.		
			.049.SD49.	.	.	.	.	.	.	.		
			.050.SD50.	.	.	.	.	.	.	.		
			.051.SD51.	.	.	.	.	.	.	.		
			.052.SD52.	.	.	.	.	.	.	.		
			.053.SD53.	.	.	.	.	.	.	.		
			.054.SD54.	.	.	.	.	.	.	.		
			.055.SD55.	.	.	.	.	.	.	.		
			.056.SD56.	.	.	.	.	.	.	.		
			.057.SD57.	.	.	.	.	.	.	.		
			.058.SD58.	.	.	.	.	.	.	.		
			.059.SD59.	.	.	.	.	.	.	.		
			.060.SD60.	.	.	.	.	.	.	.		
			.061.SD61.	.	.	.	.	.	.	.		
			.062.SD62.	.	.	.	.	.	.	.		
			.063.SD63.	.	.	.	.	.	.	.		
			.064.SD64.	.	.	.	.	.	.	.		
			.065.SD65.	.	.	.	.	.	.	.		
			.066.SD66.	.	.	.	.	.	.	.		
			.067.SD67.	.	.	.	.	.	.	.		
			.068.SD68.	.	.	.	.	.	.	.		
			.069.SD69.	.	.	.	.	.	.	.		

\* NOTE \*  
A = APPLICATION  
D = DRAFT  
F = FINAL EFFECTIVE  
E = FINAL/DISCHARGE ELIMINATED  
R = CANCELLATION REQUESTED  
C = CANCELLED  
X = EXPIRED, RENEWAL PENDING





NPDES STATUS REPORT AS OF 30 SEP 1983 FOR MARINE CORPS-LANTDIV

REPORTING DATE  
09/30/83

UIC	ACTIVITY/ LOCATION (MAJOR CLAIMANT)	PERMIT NUMBER	NONCOMPLIANCE WITH LIMITS				ADMINISTRATIVE NONCOMPLIANCE			RELATED PROJECT(S)	
			PARAMETER	SAMPLING PERIOD	# OF EXC DONE	SCHEDULE REQUIREMENTS	DUE DATE	REASONS & REMEDIAL ACTIONS	PCR #	EST COM- PLET DATE	
67001		NC0003239	.071.S071.	.	.	.	.	.	.	.	.
.	.	.	.072.S072.	.	.	.	.	.	.	.	.
.	.	.	.073.S073.	.	.	.	.	.	.	.	.
.	.	.	.074.S074.	.	.	.	.	.	.	.	.
.	.	.	.075.S075.	.	.	.	.	.	.	.	.
.	.	.	.076.S076.	.	.	.	.	.	.	.	.
.	.	.	.077.S077.	.	.	.	.	.	.	.	.
.	.	.	.078.S078.	.	.	.	.	.	.	.	.
.	.	.	.079.S079.	.	.	.	.	.	.	.	.
.	.	.	.080.S080.	.	.	.	.	.	.	.	.
.	.	.	.081.S081.	.	.	.	.	.	.	.	.
.	.	.	.082.S082.	.	.	.	.	.	.	.	.
.	.	.	.083.S083.	.	.	.	.	.	.	.	.
.	.	.	.084.S084.	.	.	.	.	.	.	.	.
.	.	.	.085.S085.	.	.	.	.	.	.	.	.
.	.	.	.086.S086.	.	.	.	.	.	.	.	.
.	.	.	.087.S087.	.	.	.	.	.	.	.	.
.	.	.	.088.S088.	.	.	.	.	.	.	.	.
.	.	.	.089.S089.	.	.	.	.	.	.	.	.
.	.	.	.090.S090.	.	.	.	.	.	.	.	.
.	.	.	.001.SS01.	.	.	.	.	.	.	.	.
.	.	.	.SS11.	.	.	.	.	.	.	.	.
.	.	.	.002.SS02.	.	.	.	.	.	.	.	.
.	.	.	.SS12.	.	.	.	.	.	.	.	.
.	.	.	.003.SS03.	.	.	.	.	.	.	.	.
.	.	.	.SS13.	.	.	.	.	.	.	.	.
.	.	.	.004.SS04.	.	.	.	.	.	.	.	.
.	.	.	.SS14.	.	.	.	.	.	.	.	.
.	.	.	.005.SS05.	.	.	.	.	.	.	.	.
.	.	.	.SS15.	.	.	.	.	.	.	.	.
.	.	.	.006.SS06.	.	.	.	.	.	.	.	.
.	.	.	.SS16.	.	.	.	.	.	.	.	.
.	.	.	.007.SS07.	.	.	.	.	.	.	.	.
.	.	.	.SS17.	.	.	.	.	.	.	.	.

\* NOTE \*  
 A = APPLICATION      E = FINAL/DISCHARGE ELIMINATED      X = EXPIRED, RENEWAL PENDING  
 D = DRAFT              R = CANCELLATION REQUESTED  
 F = FINAL & ACTIVE      C = CANCELLED

