



UNITED STATES MARINE CORPS
MARINE CORPS BASE
CAMP LEJEUNE, NORTH CAROLINA 28542-5001

BO 8092.1D
TFAC/kae
11 Apr 1986

BASE ORDER 8092.1D

From: Commanding General
To: Distribution List

Subj: Hazardous Live Minefield

Ref: (a) BO P11102.1K

Encl: (1) Photograph of Live Minefield Site

1. Purpose. To warn of an area made dangerous by possible presence of live, high explosive anti-tank and anti-personnel mines, as directed by the reference.

2. Cancellation. BO 8092.1C

3. Background. During the period from 15 April 1965 to 31 December 1967, a field test of armed high explosive mines was conducted aboard Marine Corps Base, Camp Lejeune, North Carolina.

4. Information. Mines were detonated at various intervals, and records were maintained which indicate that all material has been accounted for, either intentionally detonated in place or removed and disposed of. Transfers have precluded personnel continuity during the period of the test. Records have been transferred to replacements, but detailed, unqualified verification of the records cannot be made. Upon completion of the project, records were rechecked and verified; the area was visually inspected and probed in selected spots. Mine detectors were of no value because of the quantity of metal fragments in the area as a result of the tests. Since it cannot be absolutely ascertained that the area is clear of mines, the area is considered hazardous.

5. Minefield Site. The site is located in the area south of Highway 172 to the Atlantic Intracoastal Waterway and east of Freeman Creek to range G-5. The minefield is in the shape of the letter "L", the short axis pointing southeast. See the enclosure.

a. Fences. The minefield is surrounded by an inner and outer protective fence. The inner fence, constructed of steel wire mesh, is seventy-eight inches in height. The outer fence is constructed of barbed wire, two strands, placed parallel to and at a distance of ten yards from the inner fence. The interval between the fences is used as a firebreak.

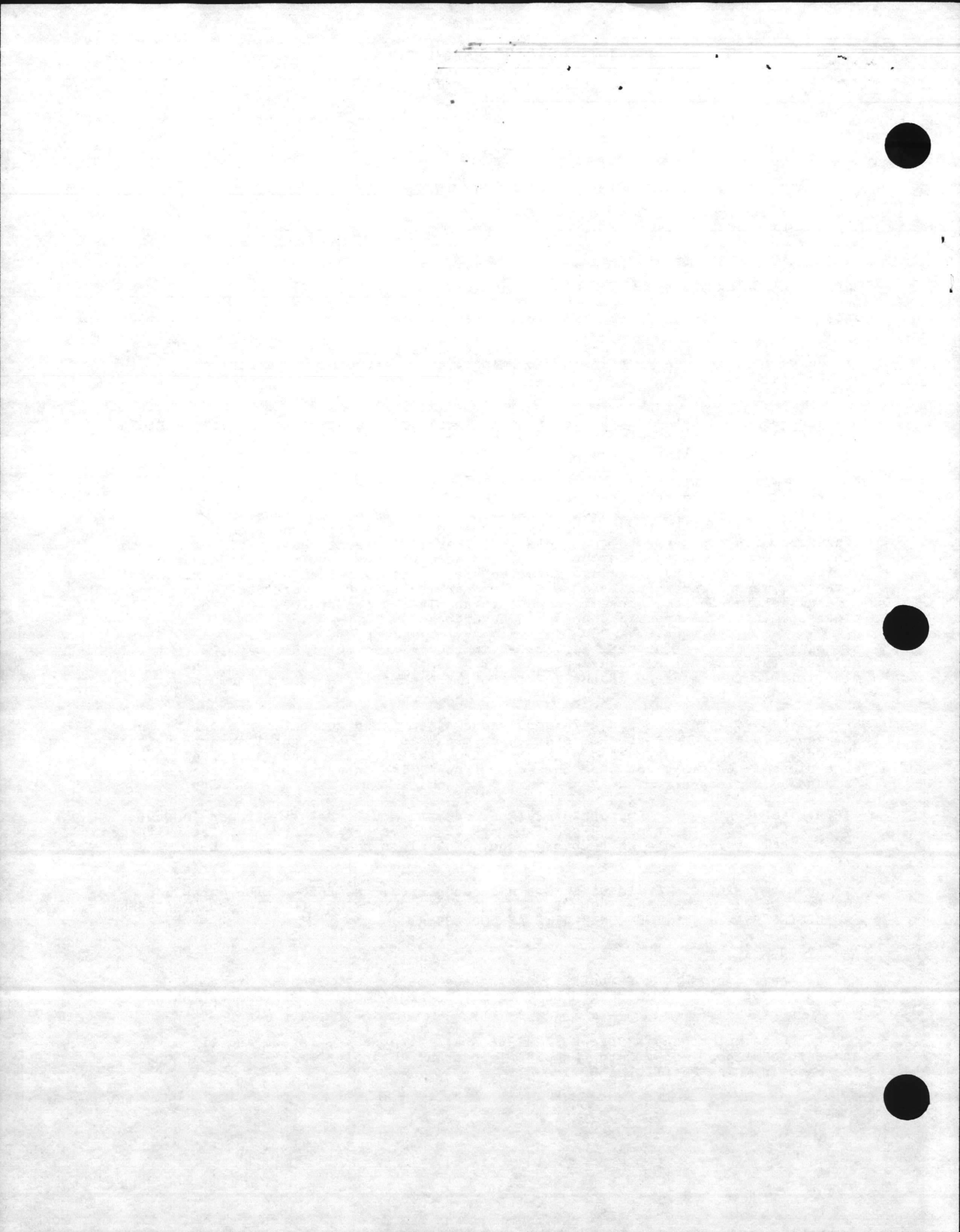
b. Warning signs. Appropriate signs are attached to both the inner and outer fences at 60 foot intervals. The signs are 12 inches by 18 inches in size, with red and black lettering on a white background. The signs read: "Danger - Live Minefield".

6. Warning. The minefield site is a hazardous area. NO PERSON WILL ENTER THE CONFINES OF THE OUTER FENCE UNLESS AUTHORIZED BY THE OFFICER IN CHARGE OF TRAINING FACILITIES BRANCH AND THEN ONLY WITH AN EOD ESCORT.

7. Action

a. Assistant Chief of Staff, Training and Operations. Assume overall cognizance of the area and coordinate as may be required all maintenance inside of the inner fence.

b. Base Maintenance Officer. Maintain all firebreaks, fences and signs accessible without entry into the minefield area. Coordinate all maintenance with the Base Training Facilities Office.



BQ 8092:1D
11 Apr 1986

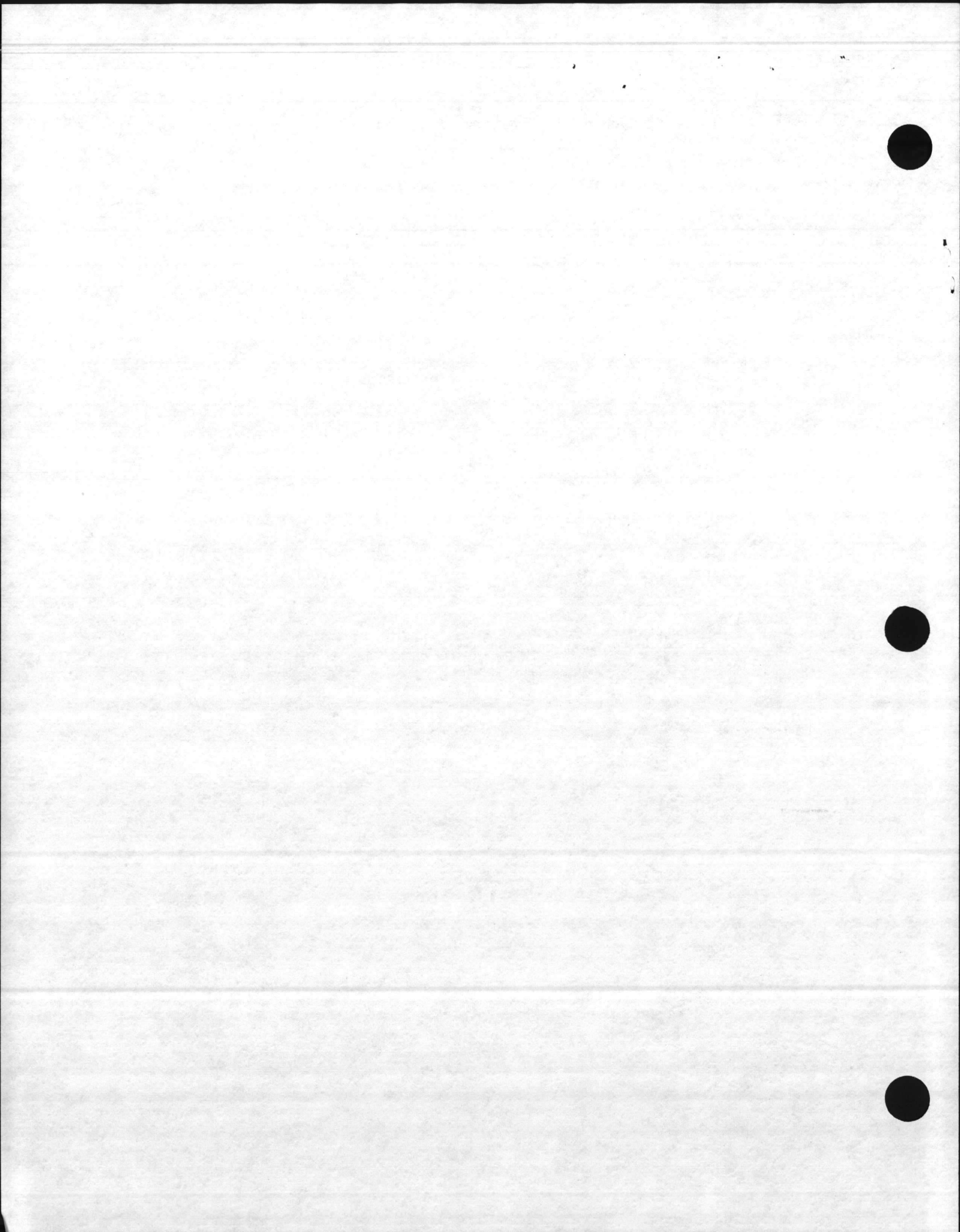
c. **Addressees.** Addressees are requested to give wide and recurring publicity to the contents of this Order, to include notification of dependents, and retention unit bulletin boards as appropriate.

Concurrence. This Order has been coordinated with and concurred in by the Commanding Generals, 2d Marine Division, FMF, and 2d Force Service Support Group (Rein), FMF.

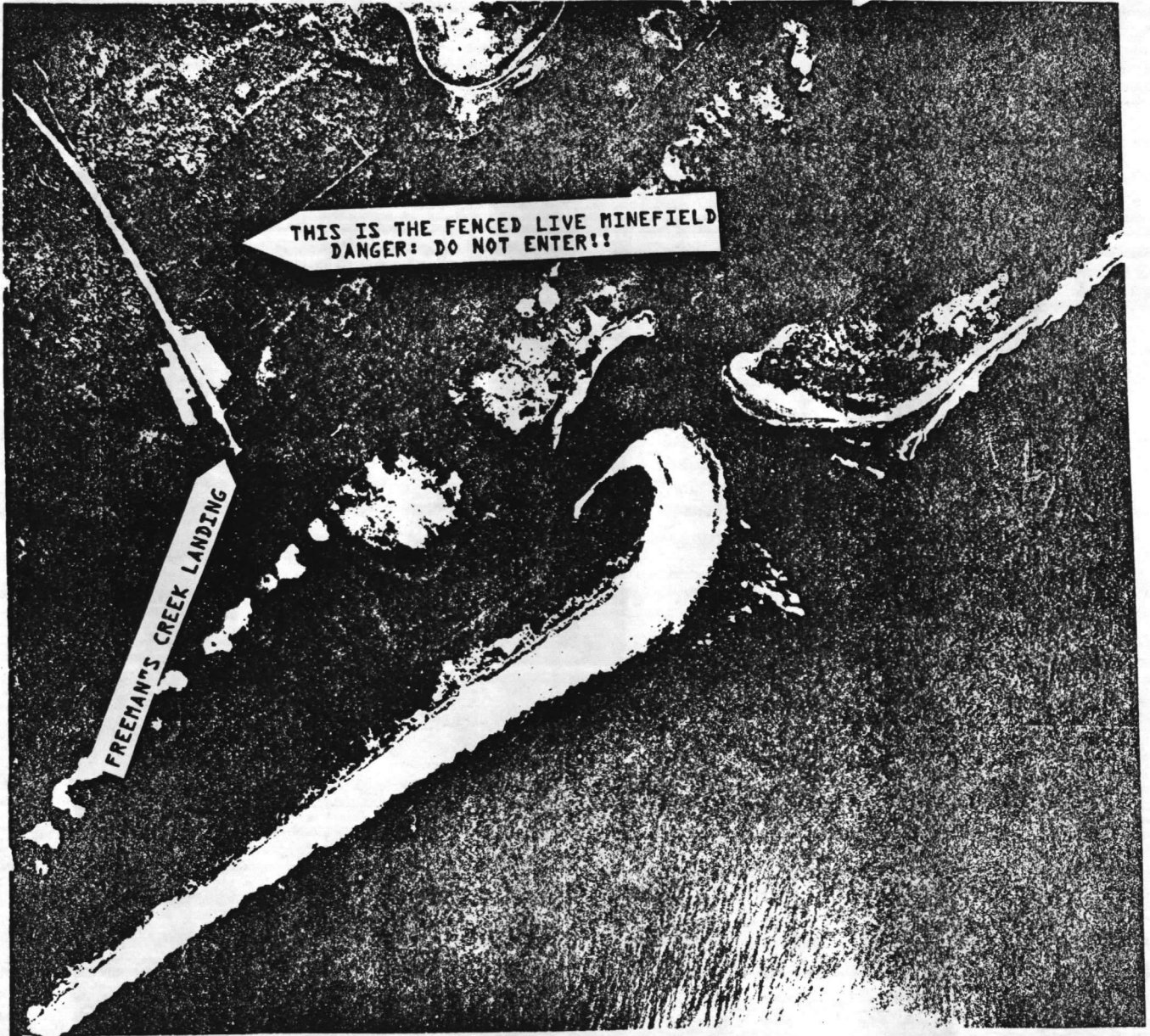
M. C. Harrington
M. C. HARRINGTON
Chief of Staff

DISTRIBUTION: A

Copy to: CMC (LMG) (3)
CG MCDEC (3)
CG FMPLANT (3)
COMFIVE (2)
COMPHIBLANT (3)
CG, Fort Bragg, NC (3)
CG 2d MAW (3)
CG MCAS Cherry Pt/COMCABEAST (3)
CG 4th MarDiv (3)
CO MCAS Beaufort, SC (3)
CO Seymour Johnson AFB, Goldsboro, NC (3)
OIC USCG Sta, Swansboro, NC (3)
OIC USCG Sta, Wilmington, NC (3)
OIC USCG Sta, Morehead City, NC (3)
MAG-26 (10)
DISTRENDR, USA (Corps of Engrs, Wilmington, NC)



PHOTOGRAPH OF LIVE MINEFIELD SITE



ENCLOSURE (1)



ROUTING SLIP

	ACTION	INFO	INITIAL
BMO		✓	
DBMO			S
TC DIR, ADMIN			
[DIR, OPS	✓		SW
[DIR, M&R			ING SG
[DIR, UTIL			
[OTHER <i>Shoe</i>	✓		
SECRETARY			

COMMENTS:

1. Ops lets look at the next w/c

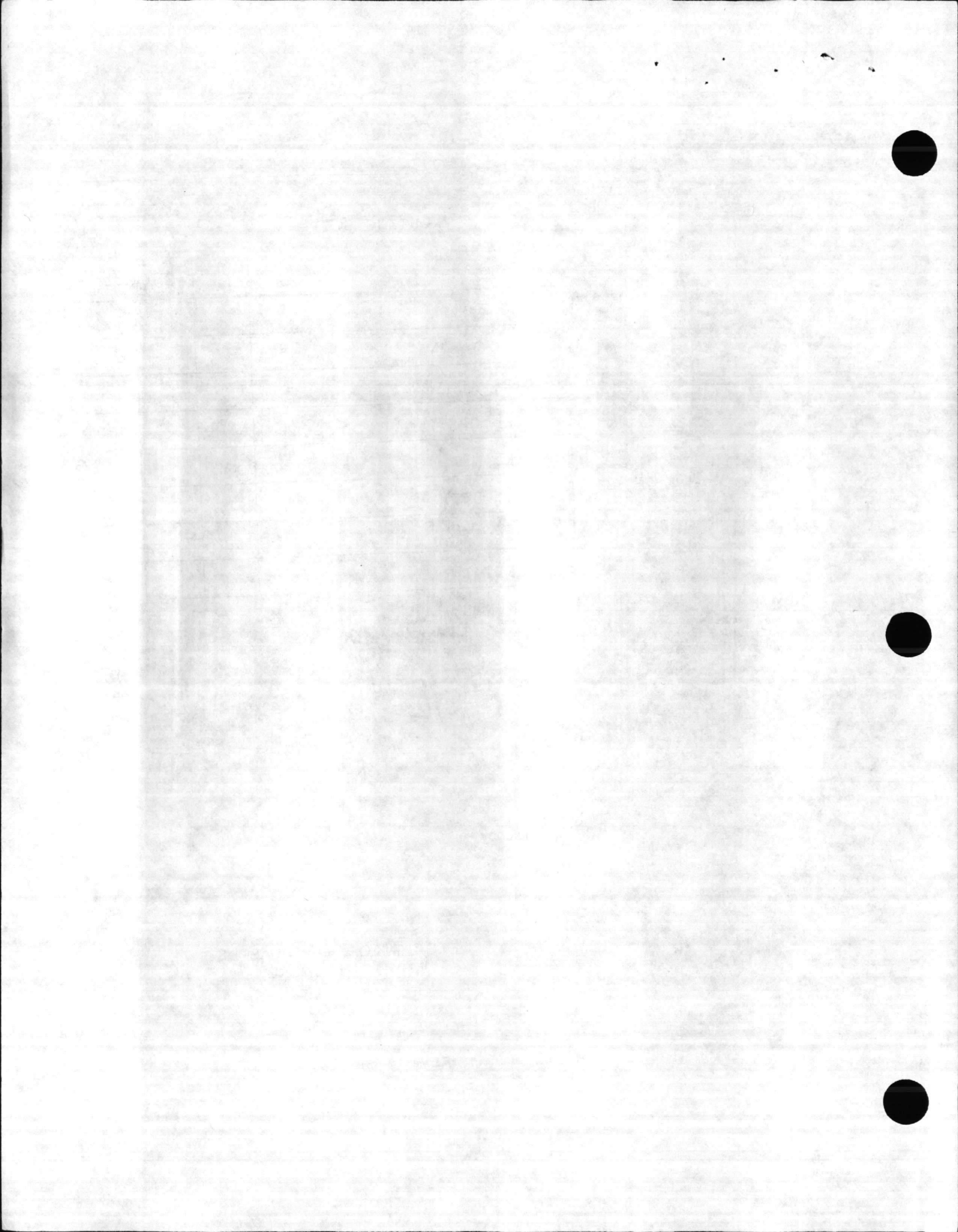
Mime field. Shoe

2.

3. Your file copy

[Signature]

"LET'S THINK OF A FEW REASONS WHY IT CAN BE DONE"



ASSISTANT CHIEF OF STAFF, FACILITIES
HEADQUARTERS, MARINE CORPS BASE

DATE 6 Dec 1990

TO:

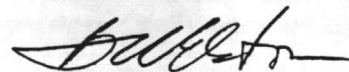
- | | |
|--|--|
| <input checked="" type="checkbox"/> BASE MAINT O | <input type="checkbox"/> DIR, FAMILY HOUSING |
| <input type="checkbox"/> PUBLIC WORKS O | <input type="checkbox"/> DIR, BACHELOR HSG |
| <input type="checkbox"/> COMM-ELECT O | <input type="checkbox"/> BASE FIRE CHIEF |
| <input type="checkbox"/> NATURAL RESOURCES | <input type="checkbox"/> FACILITIES MGMT |

ATTN: Lt Col Rivenbark

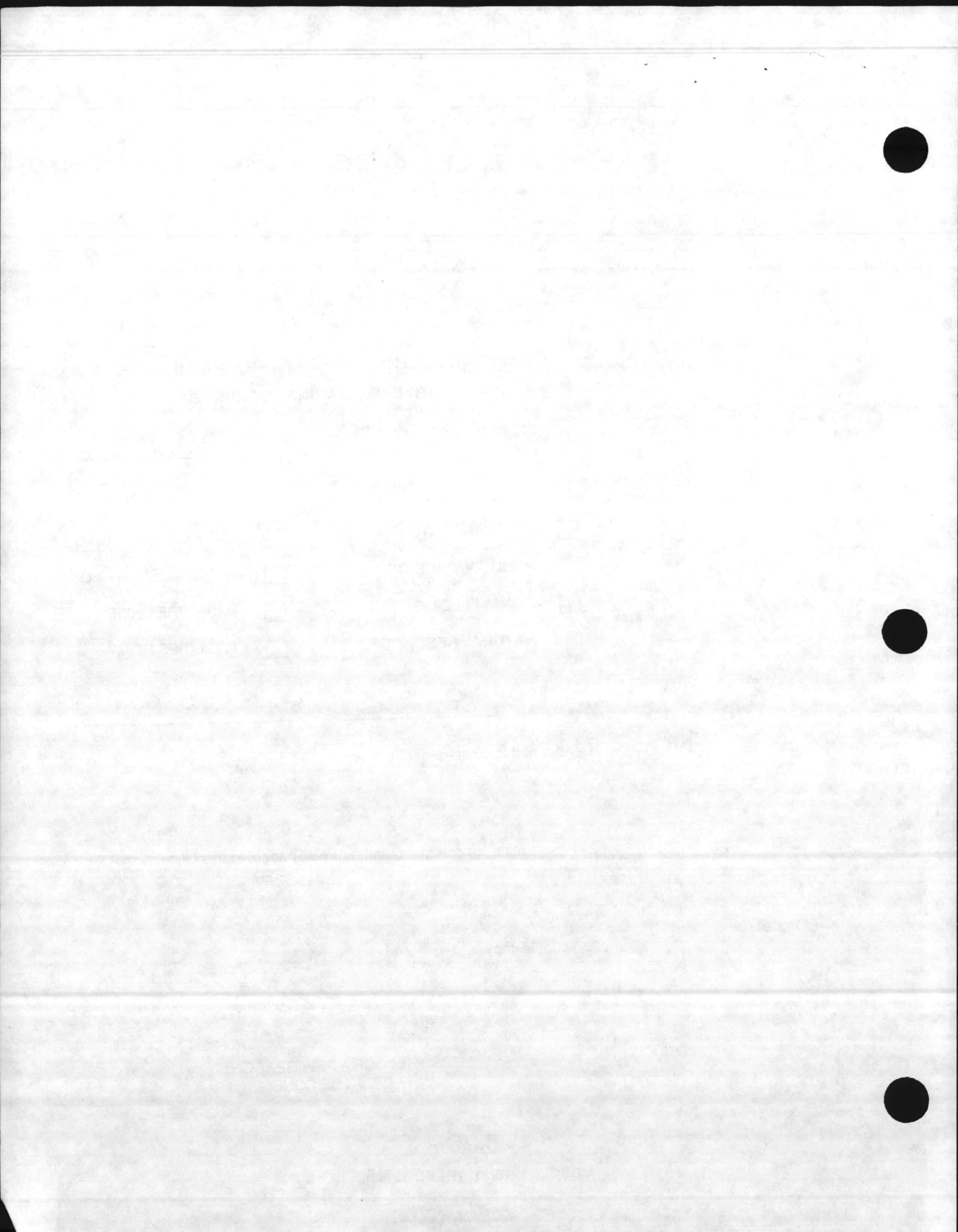
Attached is forwarded for info action.

2. Please initial, or comment, and return all papers to this office.

3. Your file copy



"LET'S THINK OF A FEW REASONS
WHY IT CAN BE DONE"



UNITED STATES MARINE CORPS
Marine Corps Base
Camp Lejeune, North Carolina 28542-5001

8000
TRNG/OPS
5 Dec 90

SECOND ENDORSEMENT on RCO, MCB ltr 2092 BRCO dtd 30 Nov 90

From: Assistant Chief of Staff, Training and Operations
To: Assistant Chief of Staff, Facilities

Subj: MAINTENANCE OF HAZARDOUS LIVE MINEFIELD

1. Forwarded.

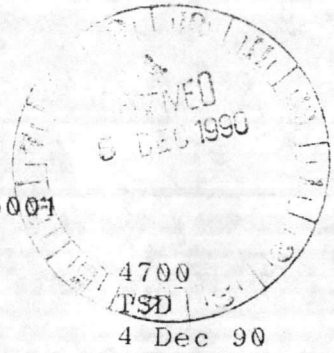
J. F. Charles
J. F. CHARLES
By direction

Copy to:
Dir, TSD
BRCO

Show:
1. Repair fence
2. Signs
3. Mow annually
between fences
EW



UNITED STATES MARINE CORPS
Marine Corps Base
Camp Lejeune, North Carolina 28542-5001

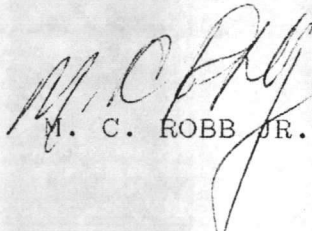


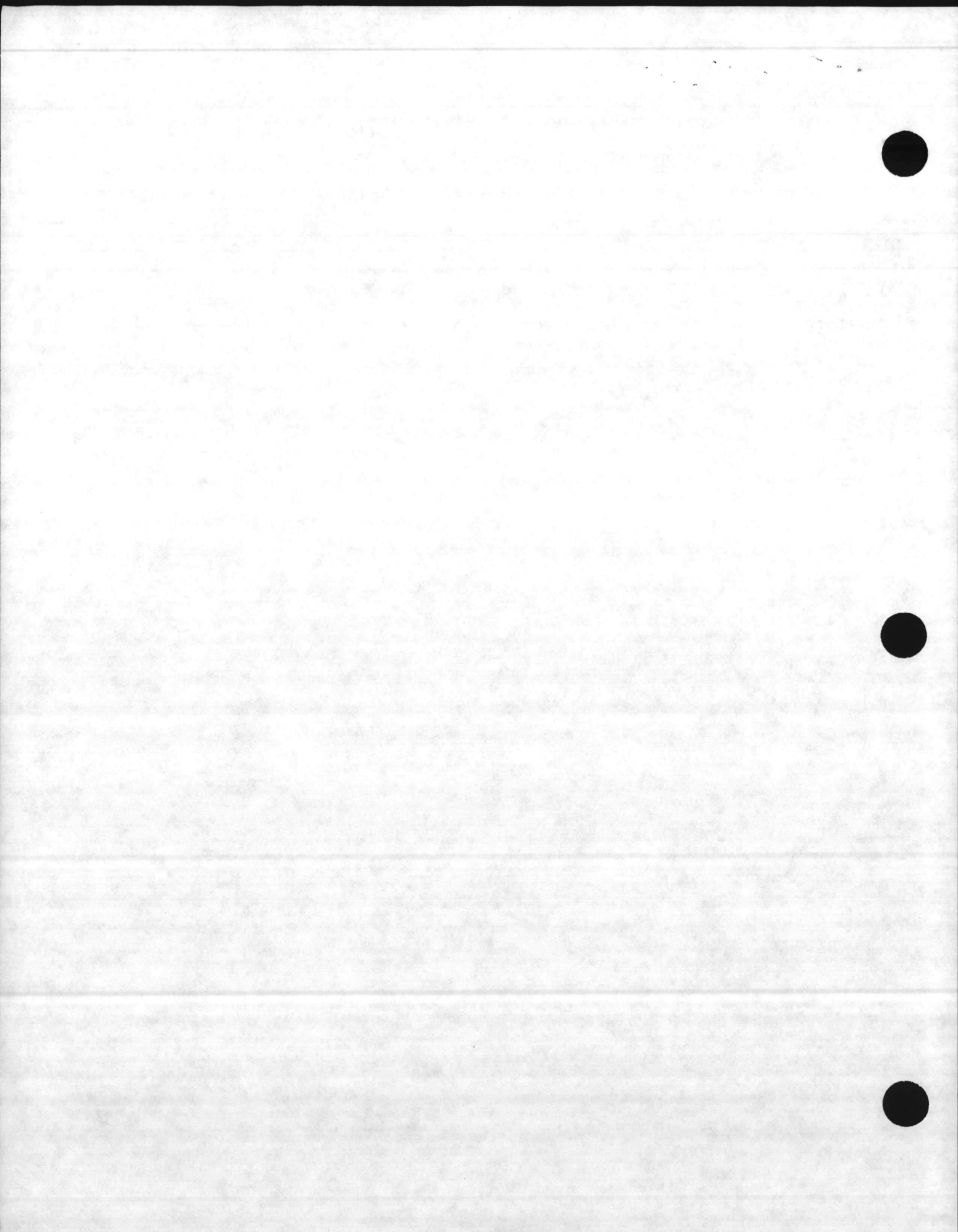
FIRST ENDORSEMENT on RCO, MCB ltr 2092 BRCO of 30 Nov 90

From: Director, Training Support Division
To: Assistant Chief of Staff, Facilities
Via: Assistant Chief of Staff, Training and Operations

Subj: MAINTENANCE OF HAZARDOUS LIVE MINEFIELD

1. Forwarded.


M. C. ROBB JR.





UNITED STATES MARINE CORPS
RANGE CONTROL
MARINE CORPS BASE
CAMP LEJEUNE, NORTH CAROLINA 28542-5001

IN REPLY REFER TO:

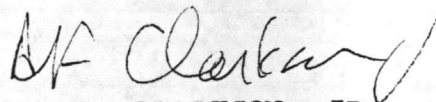
2092
BRCO
30 Nov 90

From: Range Control Officer
To: Assistant Chief of Staff, Facilities
Via: (1) Director, Training Support Division
(2) Assistant Chief of Staff, Training and Operations

Subj: MAINTENANCE OF HAZARDOUS LIVE MINEFIELD

Ref: (a) BO 8092.1D (Hazardous Live Minefield)

1. A recent inspection of the live minefield located at GC 939309 found that the firebreaks, fences and signs surrounding the minefield are in a serious state of disrepair. The firebreaks are overgrown, both fences are missing sections or in need of replacement and most of the warning signs are unreadable.
2. In accordance with the reference, the Base Maintenance Officer is tasked to maintain all firebreaks, fences and signs at the minefield site. There are no records at this office that indicate when the training area was last checked out by Base Maintenance and maintenance was performed.
3. Due to the potential for serious injury or death at the site, it is requested that the repair of firebreaks, fences and signs be given the highest priority.
4. Points of contact at Range Control are Major Clarkson or Don Hashagen at extensions 2102/3065/3066/5803. Access to the area is controlled by Range Control and the points of contact must be contacted prior to entry. Work on the inner fence may require EOD escort.


A. F. CLARKSON, JR.

