

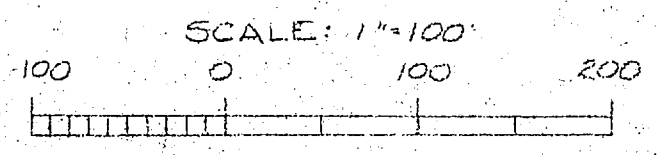
PROPERTY of U.S. GOVERNMENT
Camp Lejeune, N.C.

PROJECT: 5.801743

TABLE of METES and BOUNDS
PROPOSED, R/W

COURSE	BEARING	DISTANCE	ARC	RADIUS
Sta. 89+89.73				
1-2	S33°15'21"W	160.32		
2-3	S60°58'39"E	392.06		
3-4	S56°19'09"E	601.38	602.02	3769.72
4-5	N35°15'21"E	20.00		
5-6	S51°44'39"E	2945.29		
6-7	S65°42'30"E	2779.75	2207.46	5739.58
7-8	S79°40'21"E	1523.04		
8-9	S04°29'21"E	20.91		
9-10	S79°40'21"E	2116.39		
10-11	S76°30'42"E	560.34	560.57	5679.38
11-12	S74°01'03"E	8723.27		
12-13	N69°21'32"E	1995.57	2023.65	3487.75
13-14	N72°44'07"E	2936.40		
14-15	N76°44'57"E	394.05	394.37	2314.79
15-16	N80°45'46"E	1037.73		
16-17	N72°53'16"E	537.05	538.74	1959.86
17-18	N65°00'46"E	555.83		
18-19	S01°02'52"W	83.95		
19-20	N80°45'46"E	726.10		
20-21	N80°55'48"E	201.33	Spiral	Var
21-22	N85°22'33"E	1667.86	1669.31	11559.16
22-23	N89°49'58"E	201.33	Spiral	Var
23-24	N90°00'00"E	2326.25		
24-25	S66°18'18"E	17.91	17.91	2291.83
25-26	S66°04'30"E	330.99		
26-27	S65°49'15"E	387.22		
27-28	N90°00'00"W	2993.45		
28-29	S59°30'02"W	193.71	Spiral	Var
29-30	S55°22'53"W	1624.77	1626.17	11311.16
30-31	S30°55'44"W	193.71	Spiral	Var
31-32	S60°45'46"W	2344.72		
32-33	S76°44'57"W	373.05	373.35	2664.79
33-34	S72°44'07"W	2936.40		
34-35	S89°21'32"W	2081.40	2110.89	3637.75
35-36	N74°01'03"W	8723.27		
36-37	N76°30'42"W	545.64	545.76	5529.58
37-38	N79°40'21"W	3643.62		
38-39	N65°42'30"W	2861.79	2890.32	5929.58
39-40	N51°44'35"W	2947.35		
40-41	N52°04'34"W	193.20	Spiral	Var
41-42	N54°57'32"W	434.90	435.01	5629.58
42-43	S35°45'28"W	753.13		
43-44	N12°42'47"E	80.00		
44-45	N73°57'56"W	21.77	21.79	187.86
45-46	N70°38'39"W	23.22		
46-47	N19°21'21"E	50.00		
47-1	N17°35'42"W	47.78		
1-1	N33°15'21"E	41.08		

AREA: 135.89 Acres (3-17-71 Revision)



COMPUTED FROM JHC PLANS, JUDGEMENTS, AND PROPERTY MAPS OF CAMP LEJEUNE MARINE CORPS BASE

STATE OF NORTH CAROLINA
STATE HIGHWAY COMMISSION
LOCATION DEPARTMENT
H. BOYCE MIDGETTE
STATE LOCATING ENGINEER
PROPERTY SURVEY DIVISION
F. C. DAVIS R. L. S. No. 1-361
PROPERTY SURVEY ENGINEER

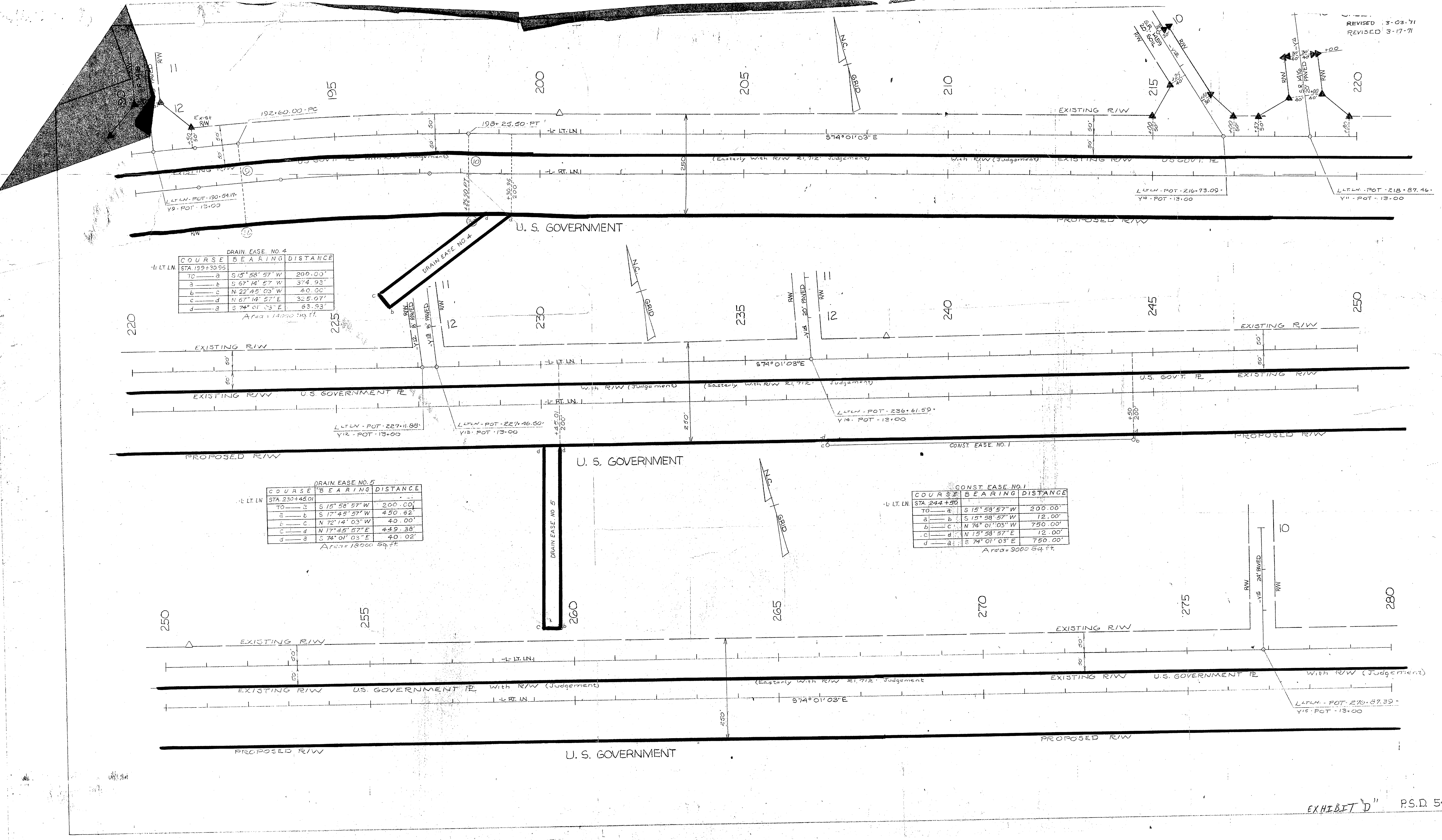
SURVEYED _____ DATE _____
COMPUTED R.C. WARREN DATE 10-30-70
DRAFTED EDDINS & POPE DATE 11-02-70
CHECKED ALFORD & POPE DATE 11-02-70

EXHIBIT "A"





REVISED 3-03-71
REVISED 3-17-71



DRAIN EASE NO. 4

COURSE	BEARING	DISTANCE
TO STA 199+30.95		
a	S 15° 58' 57" W	200.00'
b	S 67° 14' 57" W	374.93'
c	N 22° 45' 03" W	4.00'
d	N 67° 14' 57" E	325.07'
e	S 74° 01' 03" E	63.93'

Area = 140000 sq. ft.

DRAIN EASE NO. 5

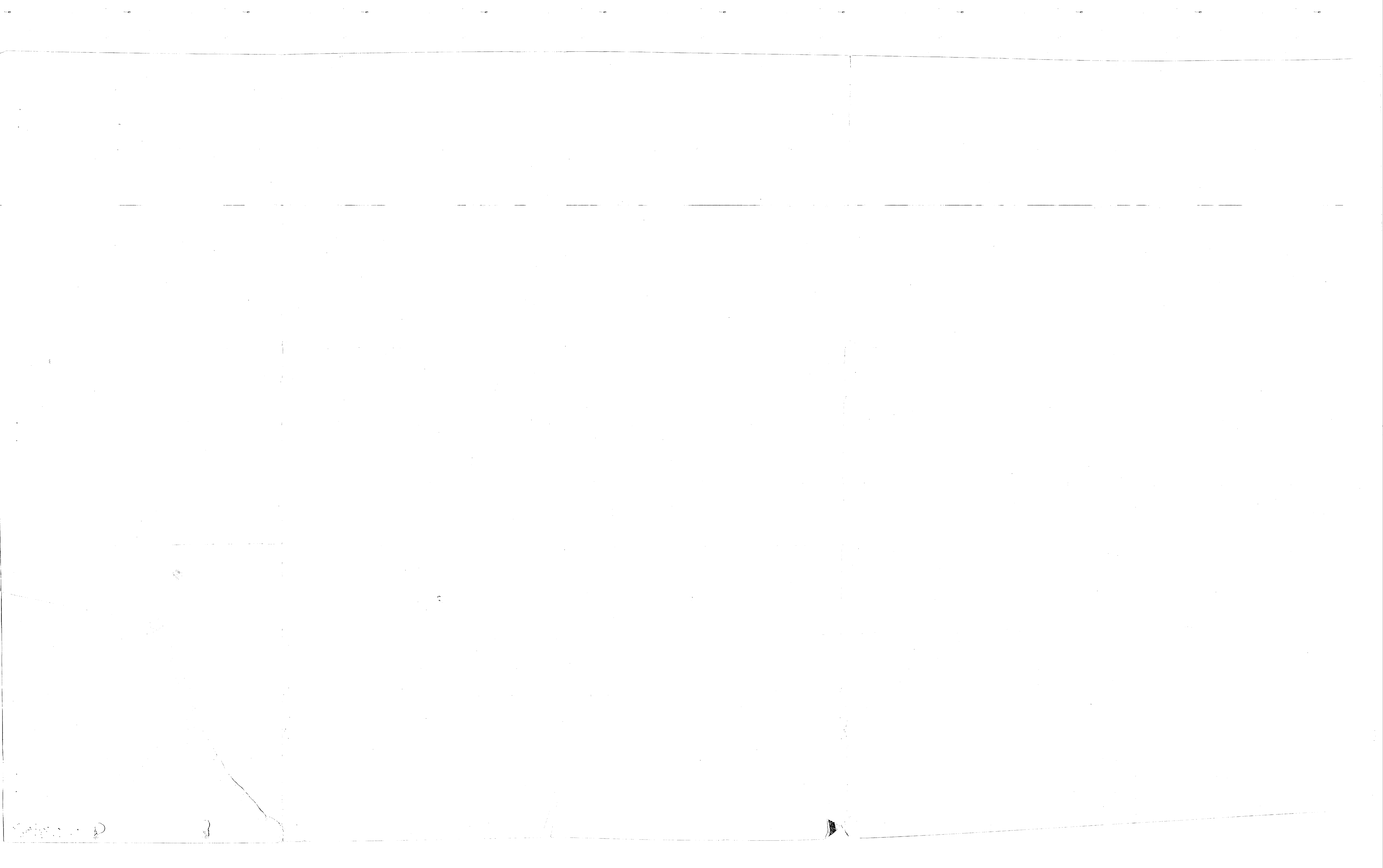
COURSE	BEARING	DISTANCE
TO STA 230+45.01		
a	S 15° 58' 57" W	200.00'
b	S 17° 45' 57" W	450.62'
c	N 72° 14' 03" W	4.00'
d	N 17° 45' 57" E	459.38'
e	S 74° 01' 03" E	40.02'

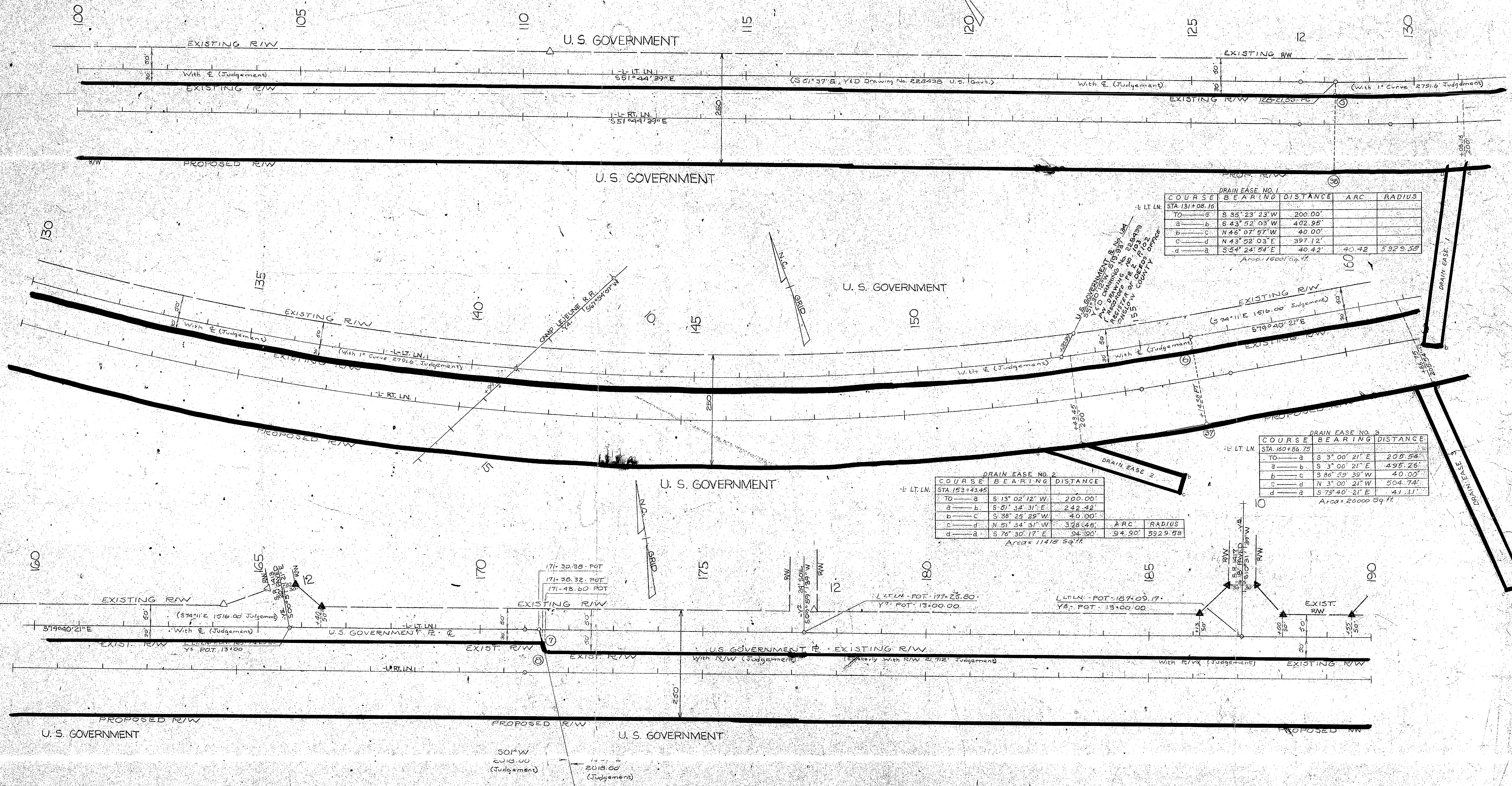
Area = 180000 sq. ft.

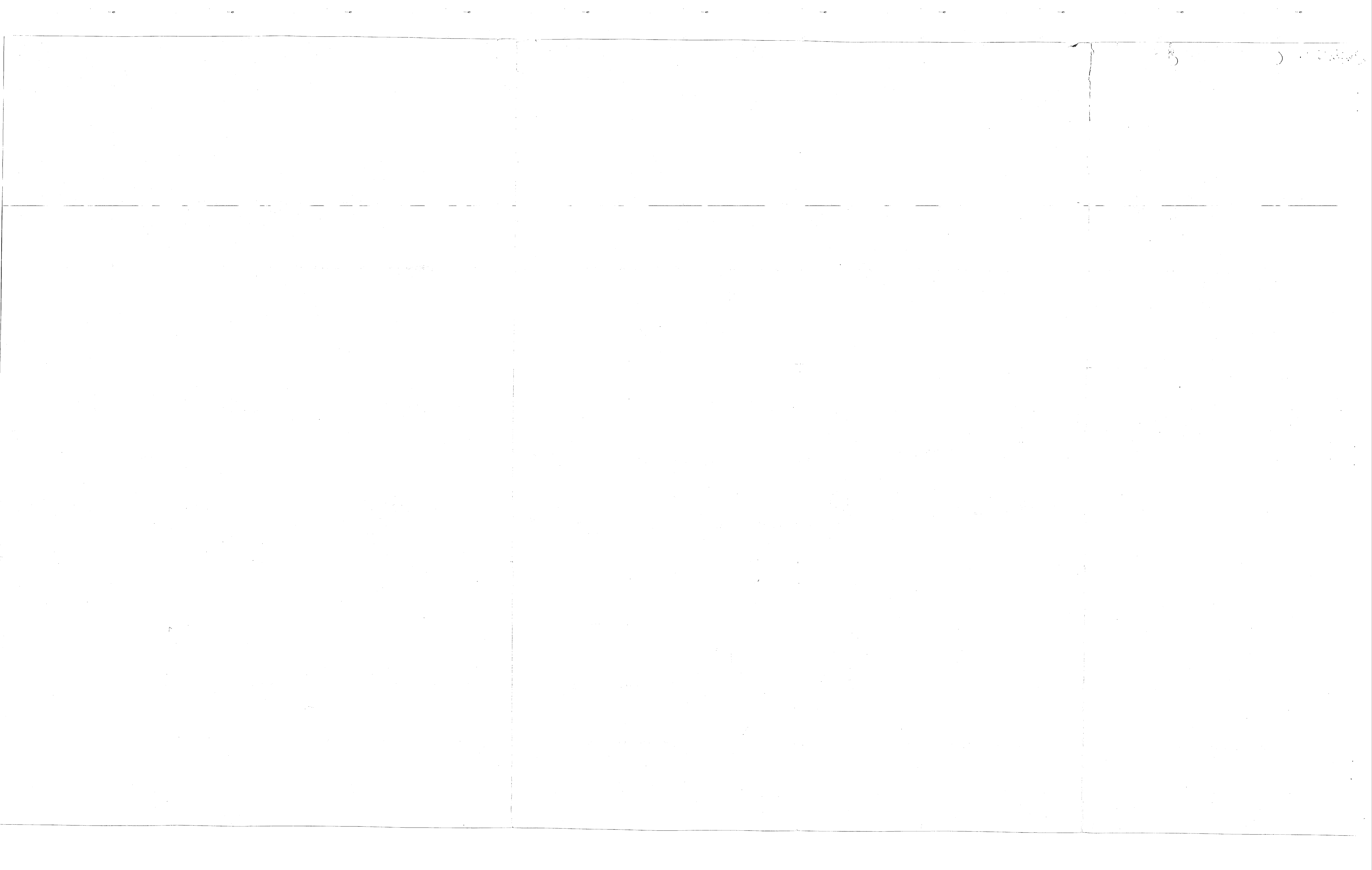
CONST. EASE. NO. 1

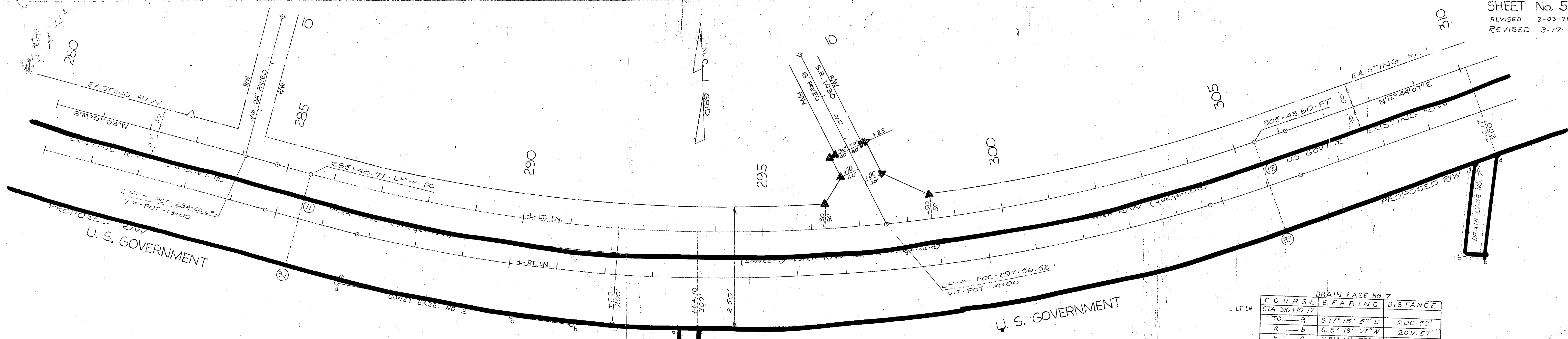
COURSE	BEARING	DISTANCE
TO STA 244+50		
a	S 15° 58' 57" W	200.00'
b	S 15° 58' 57" W	12.00'
c	N 74° 01' 03" W	750.00'
d	N 15° 58' 57" E	12.00'
e	S 74° 01' 03" E	750.00'

Area = 90000 sq. ft.









DRAIN EASE. NO. 6

COURSE	BEARING	DISTANCE	ARC	RADIUS
TO STA. 293+64.10				
a	S 02° 23' 37" W	200.00'		
b	S 02° 42' 32" W	100.35'		
c	N 87° 17' 28" W	40.00'		
d	N 2° 42' 32" E	100.05'		
e	S 87° 17' 29" E	40.00'	40.00'	3637.75'

Area = 4002.59 sq. ft.

CONST. EASE. NO. 2

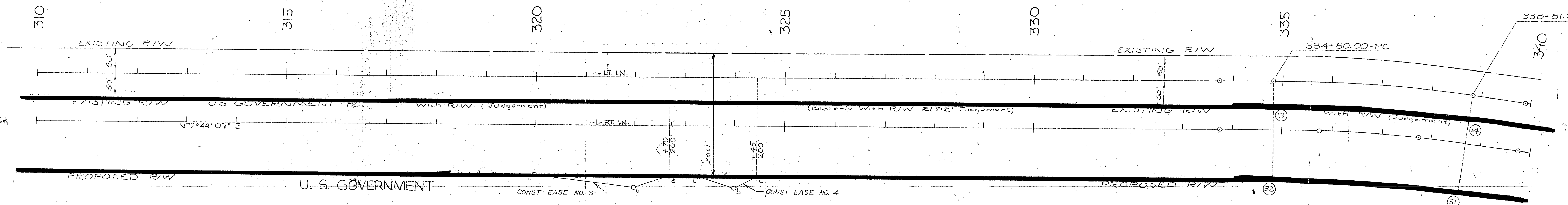
COURSE	BEARING	DISTANCE	ARC	RADIUS
TO STA. 292+00				
a	S 05° 07' 43" W	200.00'		
b	S 82° 32' 18" W	87.21'		
c	N 80° 17' 39" W	127.68'		
d	N 72° 51' 04" W	371.51'		
e	N 14° 17' 43" E	10.00'		
f	S 80° 17' 17" E	581.98'	582.00'	3637.75'

Area = 5479.54 sq. ft.

DRAIN EASE. NO. 7

COURSE	BEARING	DISTANCE
TO STA. 30+10.17		
a	S 17° 15' 53" E	200.00'
b	S 8° 18' 07" W	209.57'
c	N 81° 41' 53" W	40.00'
d	N 8° 18' 07" E	190.43'
e	N 72° 44' 07" E	44.34'

Area = 8000 sq. ft.



CONST. EASE. NO. 3

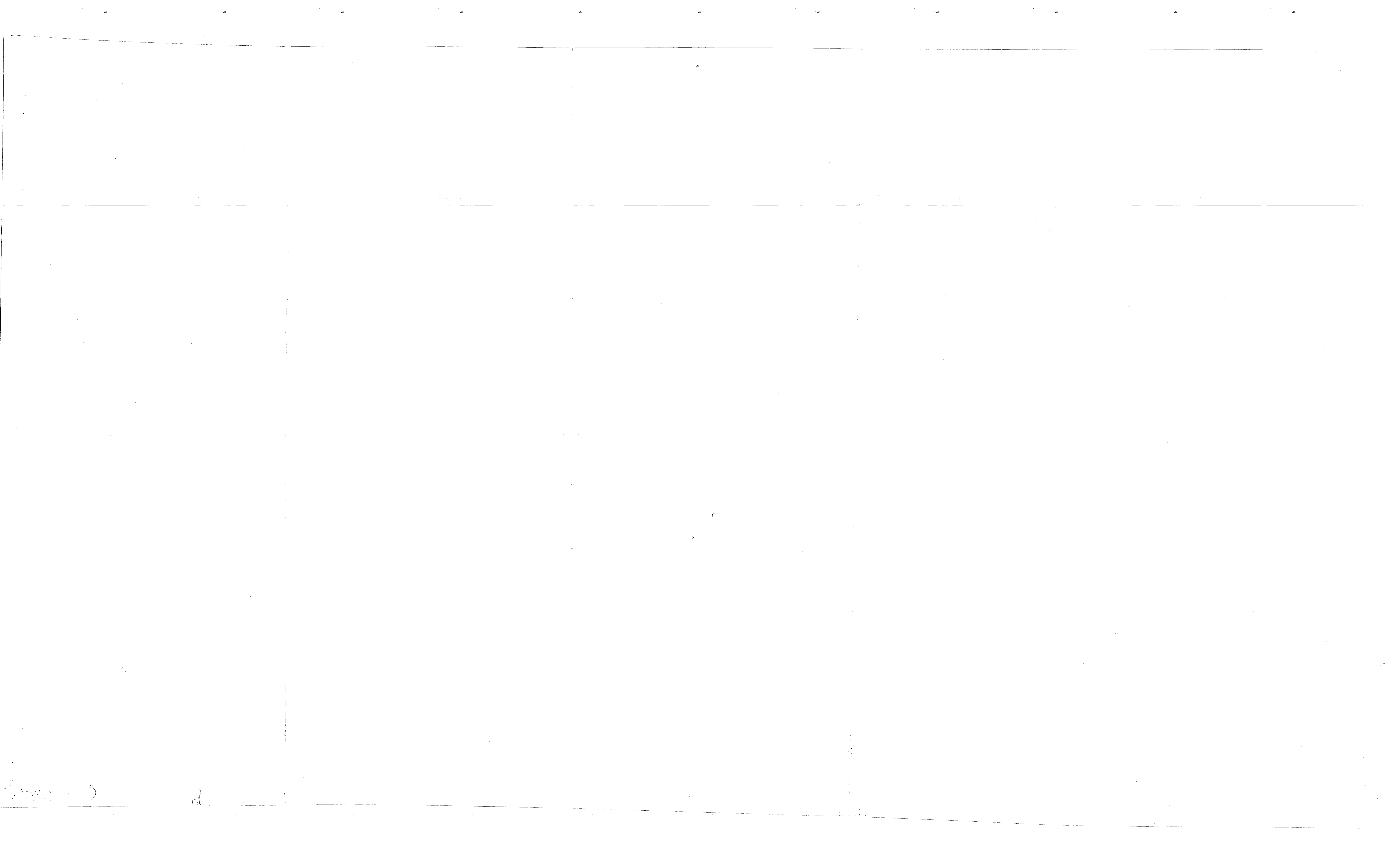
COURSE	BEARING	DISTANCE
TO STA. 322+72.00		
a	S 17° 15' 53" E	200.00'
b	S 55° 17' 17" W	73.38'
c	S 79° 00' 45" W	201.21'
d	N 72° 44' 07" E	270.00'

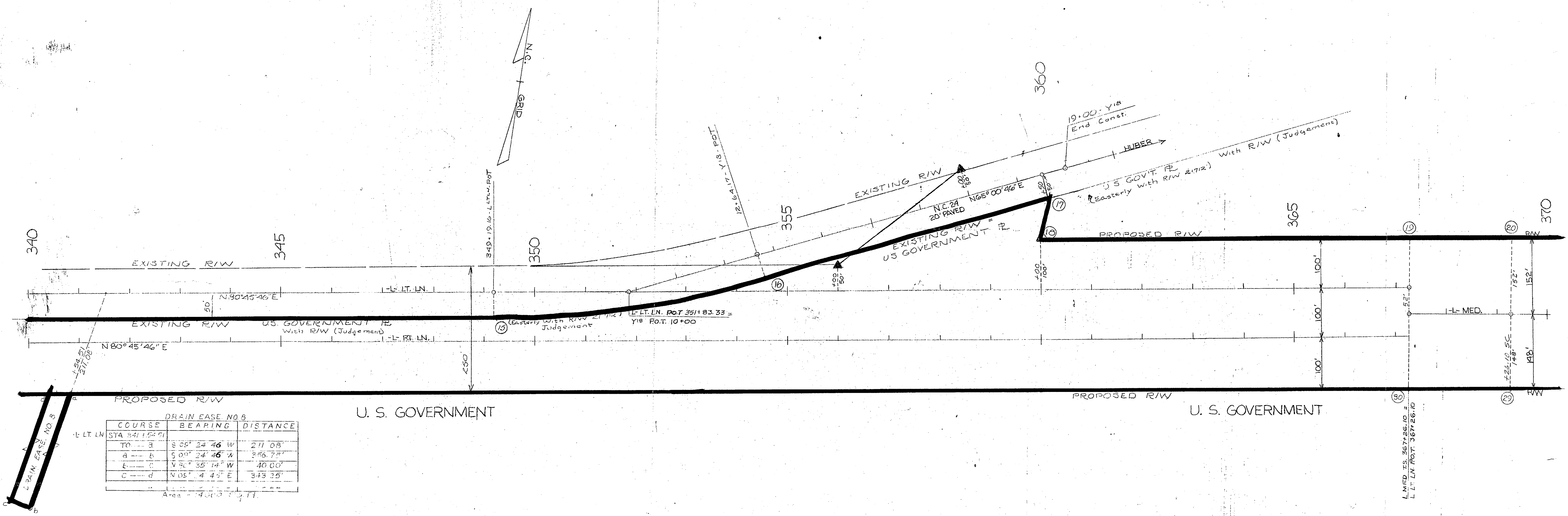
Area = 2970 sq. ft.

CONST. EASE. NO. 4

COURSE	BEARING	DISTANCE
TO STA. 324+45.00		
a	S 17° 15' 53" E	200.00'
b	S 49° 40' 51" W	51.48'
c	N 87° 36' 39" W	74.33'
d	N 72° 44' 07" E	115.00'

Area = 1438 sq. ft.





DRAIN EASE NO. 8

COURSE	BEARING	DISTANCE
TO STA 341+52.71		
a	S 05° 24' 46" W	271.05'
b	S 05° 24' 46" W	246.75'
c	N 52° 35' 14" W	40.00'
d	N 05° 44' 45" E	343.25'

Area = 14,003.77

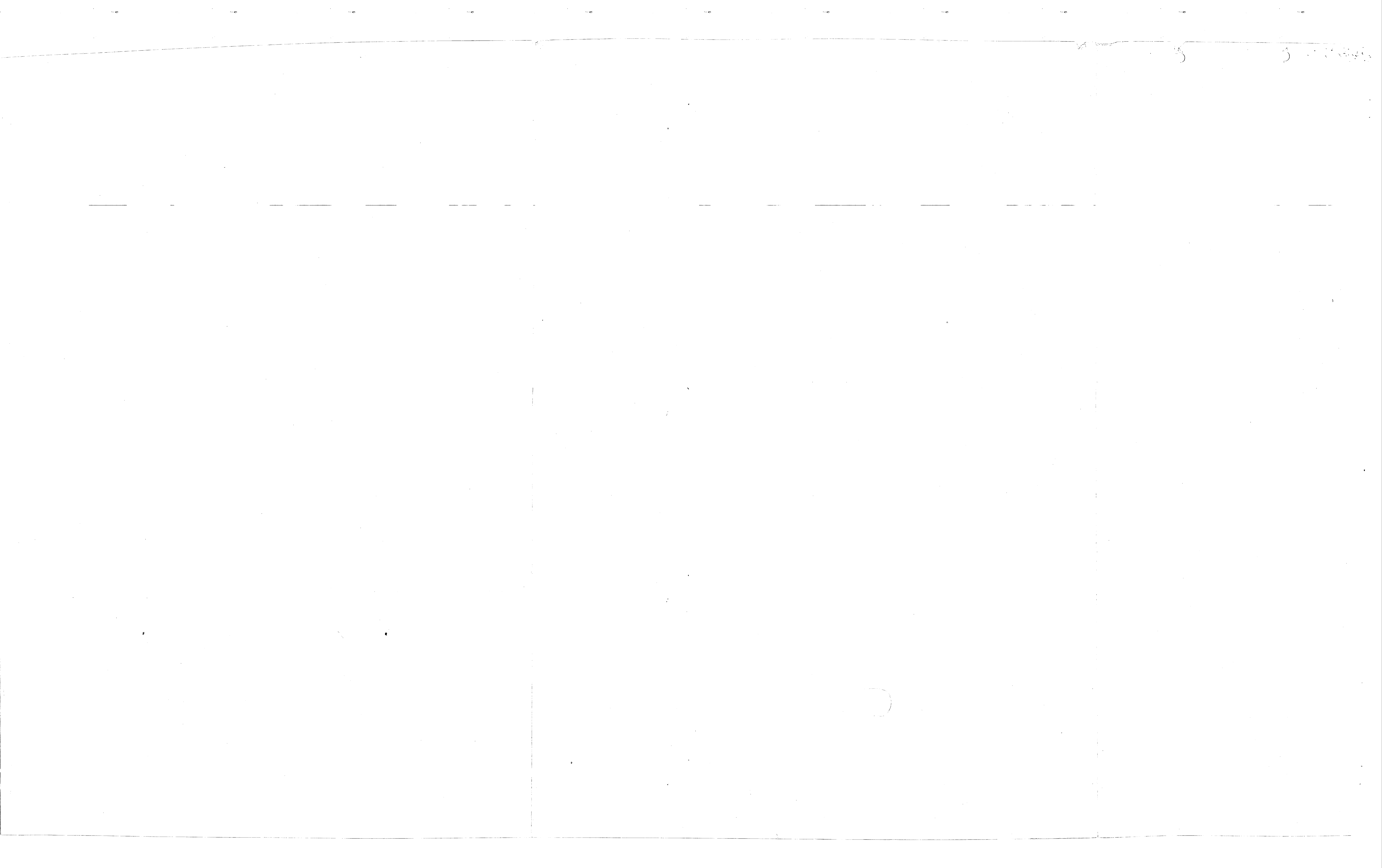


TABLE of METES and BOUNDS
CONST. EASE. "5"

COURSE	BEARING	DISTANCE
Sta. 385-73.54		
To 28	S00°30'00"E	148.00'
28 b	S73°54'01"W	75.24'
b c	N66°53'03"W	30.71'
c 28	N69°14'28"E	102.21'

Area: 1017 Sq. Ft.

