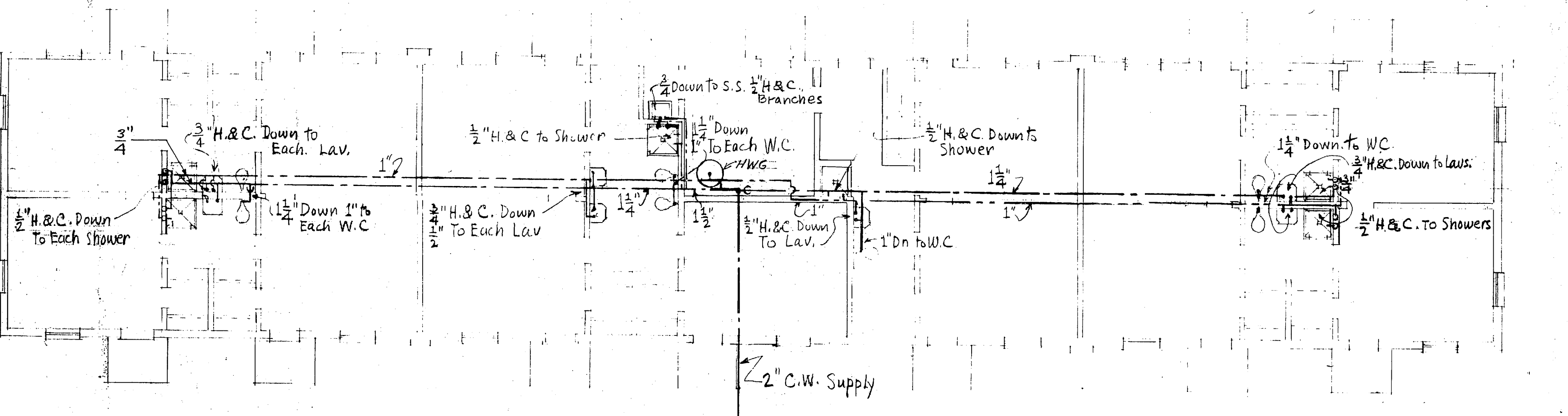
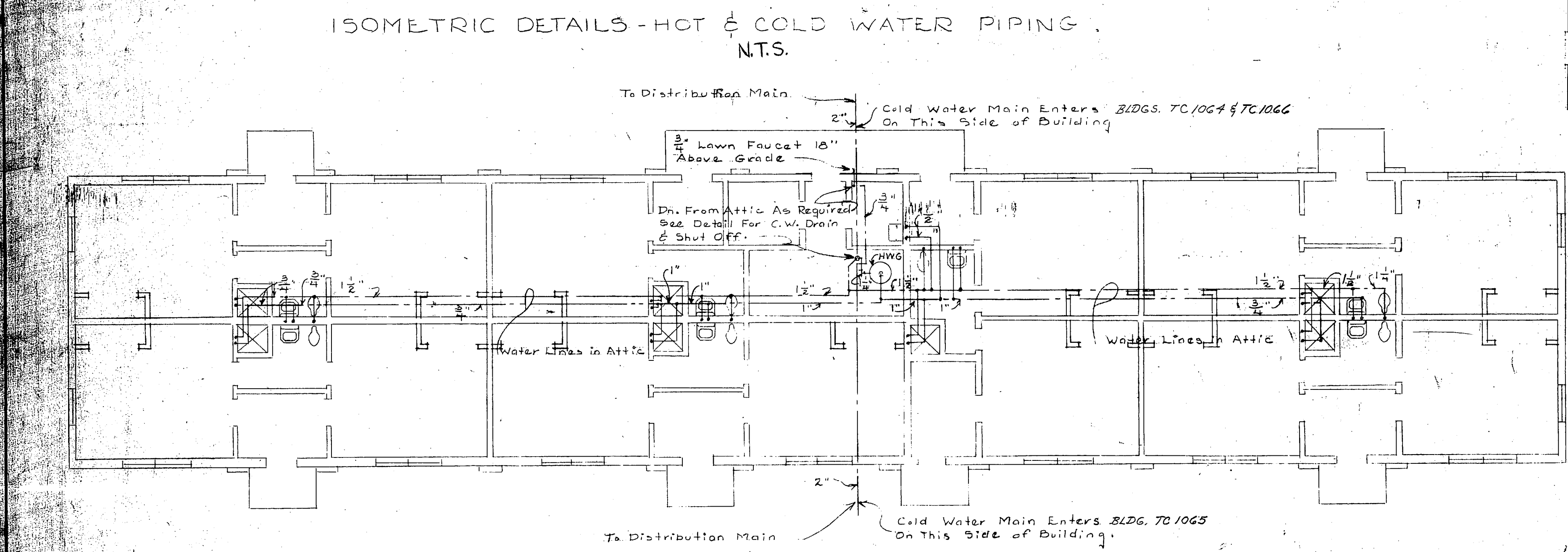
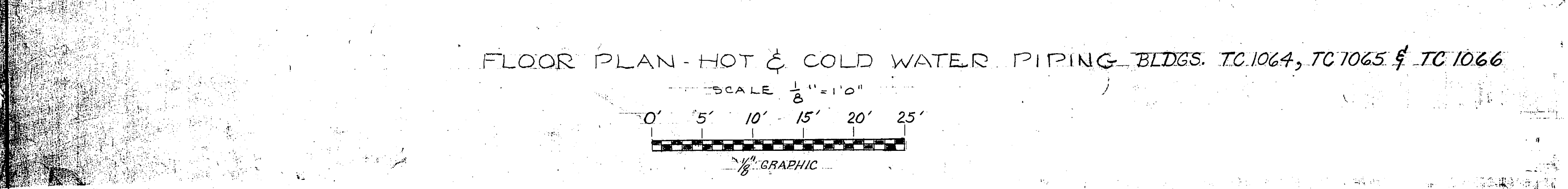


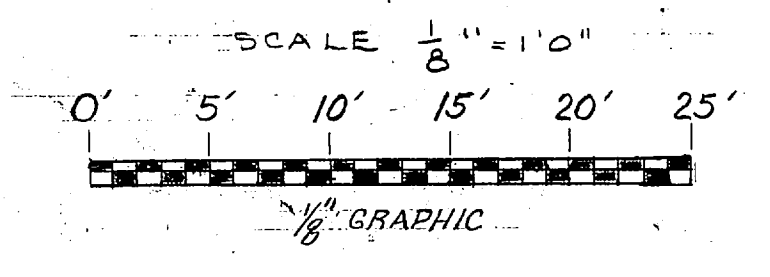
- NOTES**
1. THE SYMBOL INDICATES THE BEGINNING POINT OF WORK.
 2. REMOVE C.W. MAIN FROM POINT INDICATED BY SYMBOL TO ATTIC SPACE INCLUDING RUNOUT TO H.W. GENERATOR AND REMOVE H.W. PIPE FROM H.W. GENERATOR TO ATTIC SPACE. PROVIDE ALL PIPING REMOVED BY THIS NOTE & RECONNECT H.W. GENERATOR.
 3. REMOVE EXISTING C.W. & H.W. PIPING WHICH IS INSTALLED IN ATTIC SPACE. PROVIDE NEW PIPING REMOVED BY THIS NOTE.
 4. EXISTING PIPING RISERS TO FIXTURES ARE CONCEALED IN WALLS. REMOVE RISERS TO SHOWERS AND EXPOSED PIPING FROM BASE OF RISERS TO FIXTURES INCLUDING STUBS THRU WALL. PROVIDE NEW RISERS FOR EXPOSED ON WALLS EXCEPT RISERS TO SHOWERS. RECONNECT ALL FIXTURES.
 5. REMOVE RUNOUT TO AND INCLUDING LAV. FAUCET. PROVIDE NEW FROSTPROOF HOSE BIBS & PIPING.
 6. INSTALL NEW VALVES SHOWN OR NOTED & INSULATE ALL NEW H.W. PIPING IN ATTIC.
 7. PROVIDE NEW SUPPLIES WITH STOPS FOR ALL LAV., S.S., & H.C.
 8. DISINFECT ALL NEW WATER PIPING AND SYSTEM SHALL BE PLACED IN WORKING ORDER.
 9. PATCH & PAINT EXISTING WALLS & CEILING AS REQUIRED. EXISTING FLOOR IS 4-INCH REINFORCED CONCRETE SLAB W/ ASPHALT TIDE. EXISTING INTERIOR WALLS & CEILING ARE 3/8 INCH GYPSUM BOARD ON WOOD STUDDING & PURLING. EXISTING EXTERIOR WALLS ARE CONCRETE MASONRY UNITS.
 10. FOR EXISTING BLDG CONSTRUCTION FOR TC-1064, TC-1065 & TC-1066 SEE Y&D DWG NO. 56631 & FOR BLDGS TC-1067, TC-1068 & TC-1069 SEE Y&D DWG NO. 64524.



FLOOR PLAN - HOT AND COLD WATER PIPING BLDGS. TC 1067, TC 1068 & TC 1069
SCALE $\frac{1}{8}'' = 1'-0''$



FLOOR PLAN - HOT & COLD WATER PIPING BLDGS. TC 1064, TC 1065 & TC 1066



LEGEND

COLD WATER PIPE	
HOT WATER PIPE	
GATE VALVE	
WATER CLOSET	W.C.
LAVATORY	LAV.
SERVICE SINK	S.S.
COLD WATER	C.W.
HOT WATER	H.W.
HOT WATER GEN.	H.W.G.
PRESSURE RELIEF VALVE	

REVISIONS			
SYM	DESCRIPTION	DATE	APPROVED

PUBLIC WORKS DEPT. MARINE CORPS BASE CAMP LEJEUNE, N.C.		DEPARTMENT OF THE NAVY NAVAL FACILITIES ENGINEERING COMMAND ATLANTIC DIVISION NORFOLK, VIRGINIA	
DES. DR.	CHK. T. H. H.	MARINE CORPS BASE, CAMP LEJEUNE, N.C.	
APPROVED	DATE 7/26/78	REPLACE WATERLINES CAMP GEIGER, BLDGS. TC 1064, TC 1065, TC 1066, TC 1067, TC 1068 & TC 1069 FLOOR PLANS & SCHEMATICS	
PUBLIC WORKS OFFICER FOR THE C.B.G.		SIZE	NAVFAC DRAWING NO.
ENTRUSTED TO DATE		F	4036351
COMMITTEE GENERAL		CODE IDENT NO.	
ED.	DATE 7/26/78	CONSTR CONTR NO.	162470-78-B-3027
APPROVED		SCALE	NOTED
FOR COMMANDER, NAVFAC		SPEC.	05783027
		SHEET	2 OF 2
		LAST DTV DWS NO.	

