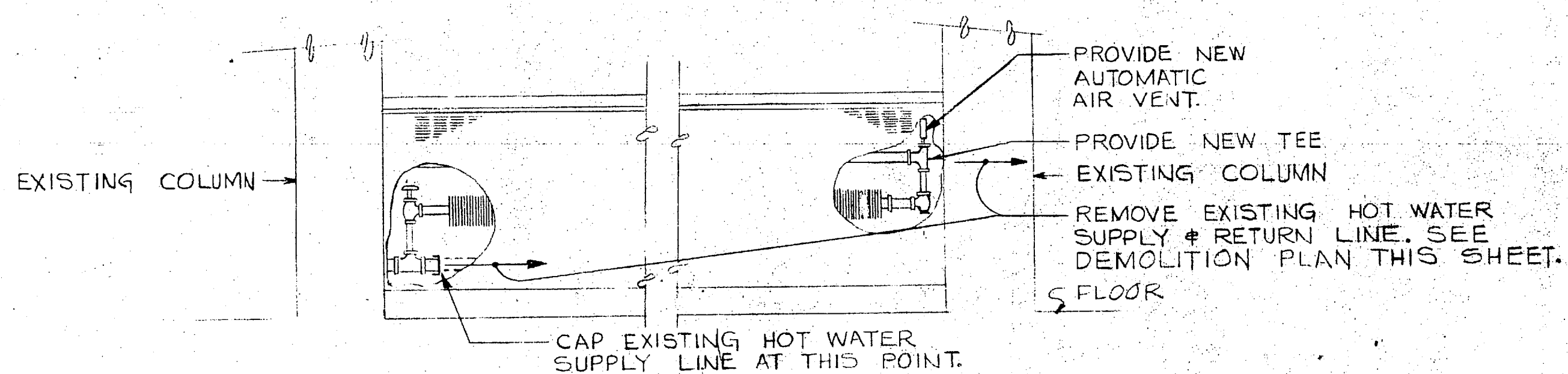


PLUMBING FIXTURE SCHEDULE						
SYMBOL	FIXTURE	WASTE	VENT	C.W.	H.W.	REMARKS
P-1	WATER CLOSET	4"	1"	—	—	CIRCUIT VENT
P-2	LAVATORY	1 1/2"	1 1/4"	1/2"	1/2"	—
P-3	URINAL	2"	1 1/2"	3/4"	—	—
P-4	BAR SINK	—	—	1/2"	1/2"	PIPE WASTE TO FLOOR SINK
F.S.	FLOOR SINK	2"	—	—	—	CIRCUIT VENT

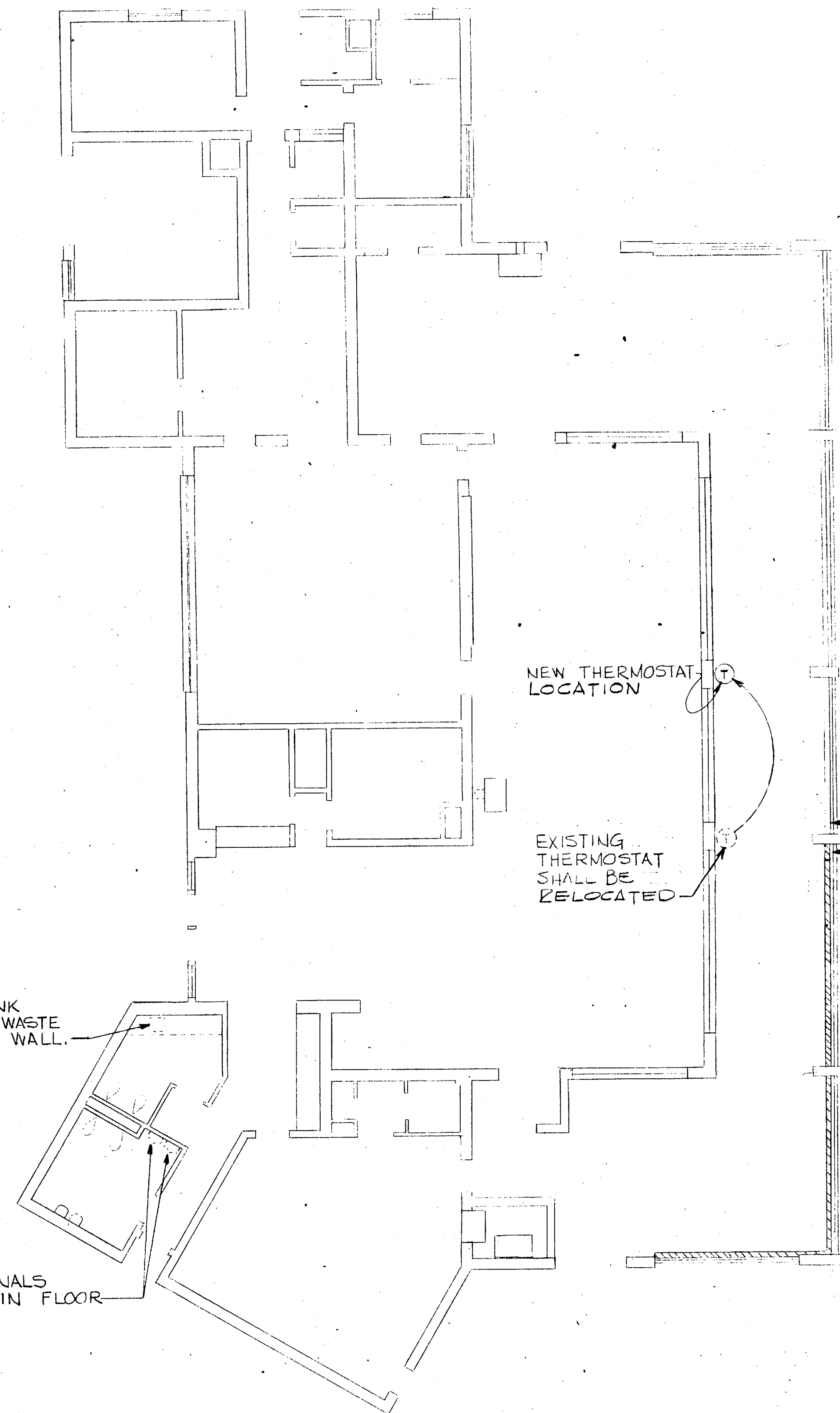


SECTION A-A

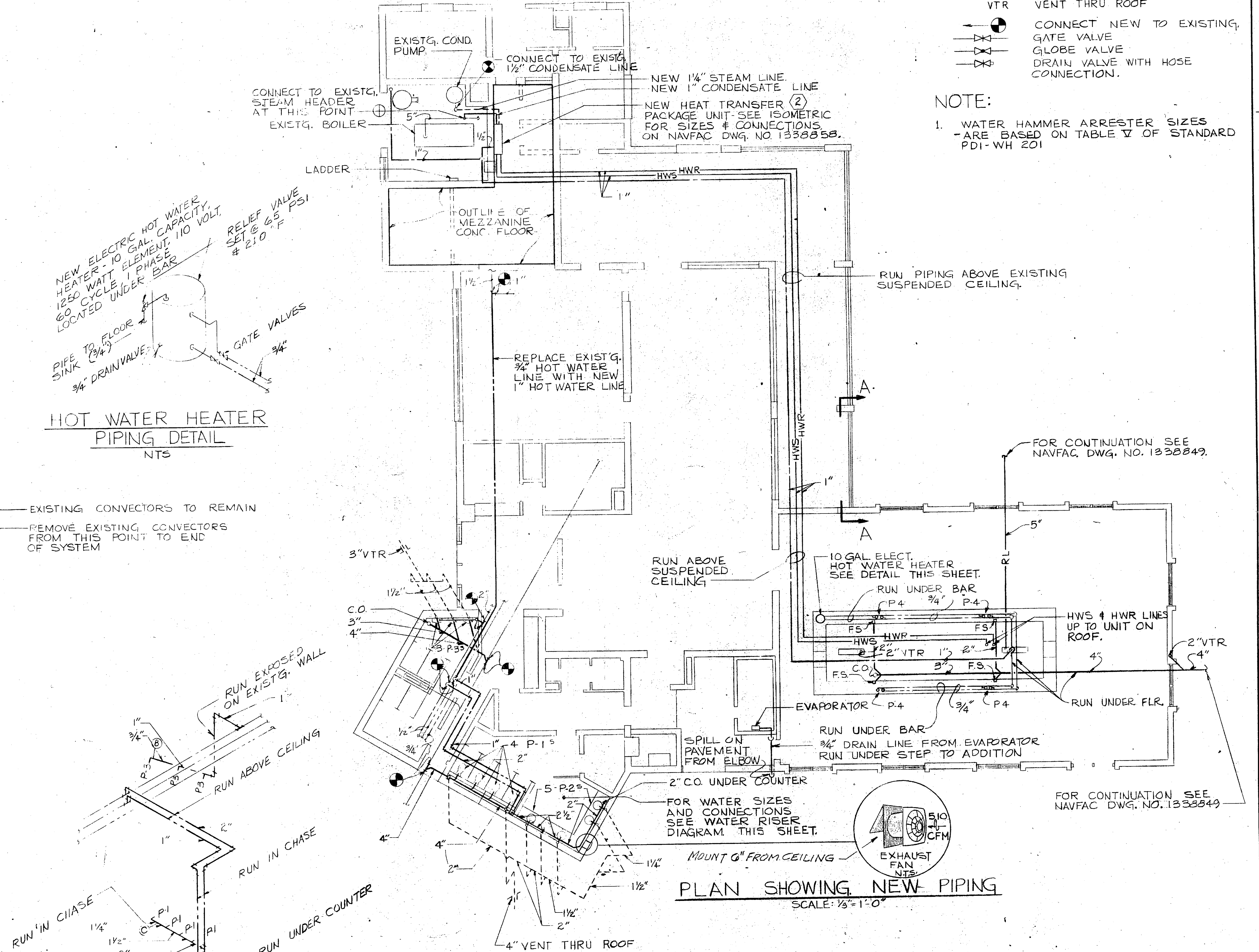
REVISIONS			
NO.	DESCRIPTION	DATE	APPROVED

LEGEND	
---	NEW WASTE LINE
---	NEW COLD WATER LINE DOMESTIC
---	NEW HOT WATER LINE DOMESTIC
RL	NEW RAIN LEADER
HWS	NEW HOT WATER SUPPLY LINE
HWR	NEW HOT WATER RETURN LINE
---	NEW VENT LINE
---	EXISTING WASTE LINE
---	EXIST'G. COLD WATER LINE DOMESTIC
---	EXIST'G. HOT WATER LINE DOMESTIC
---	EXIST'G. HOT WATER RECIR. LINE
○	WATER HAMMER ARRESTERS SEE NOTE NO 1.
VTR	VENT THRU ROOF
⊕	CONNECT NEW TO EXIST'G. GATE VALVE
⊕	GLOBE VALVE
⊕	DRAIN VALVE WITH HOSE CONNECTION.

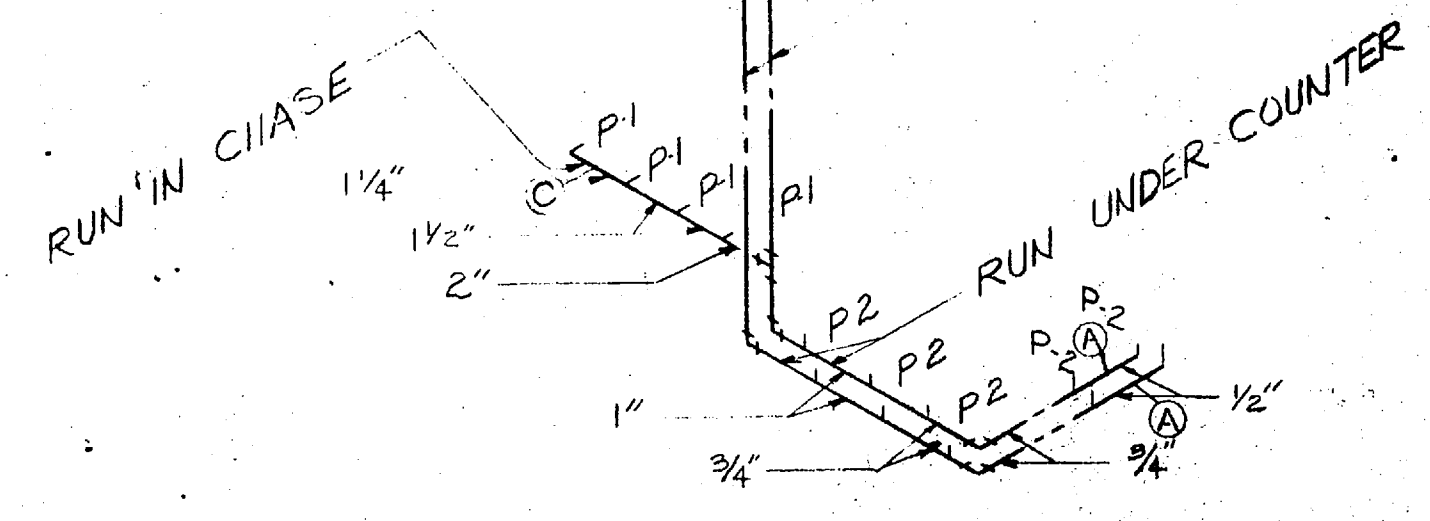
NOTE:
1. WATER HAMMER ARRESTER SIZES ARE BASED ON TABLE V OF STANDARD PDI-WH 201



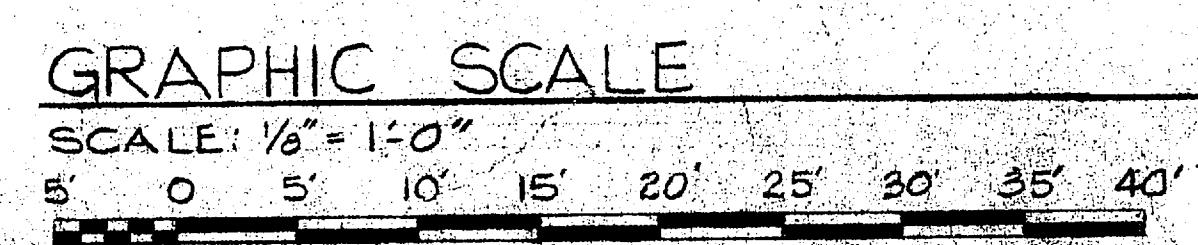
MECHANICAL DEMOLITION PLAN
SCALE: 1/8" = 1'-0"



PLAN SHOWING NEW PIPING
SCALE: 1/8" = 1'-0"



WATER RISER DIAGRAM
N.T.S.

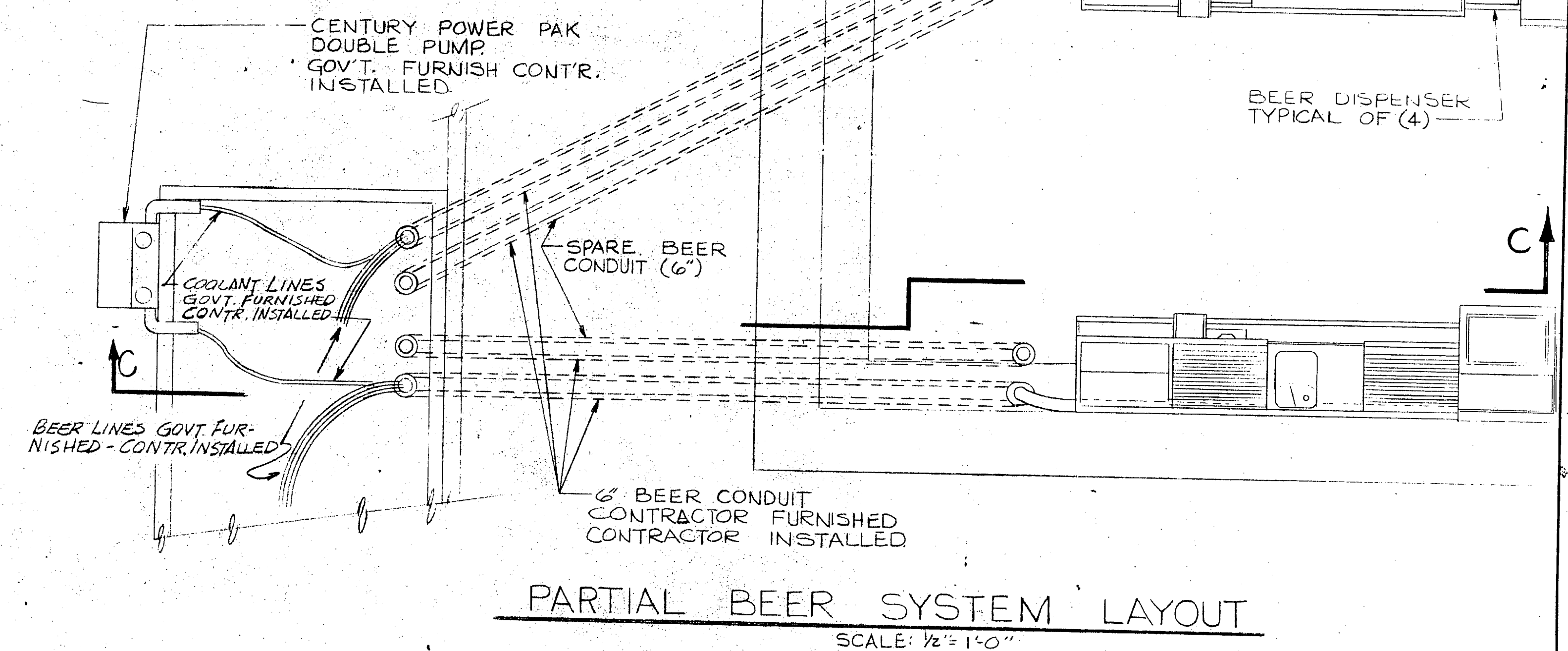
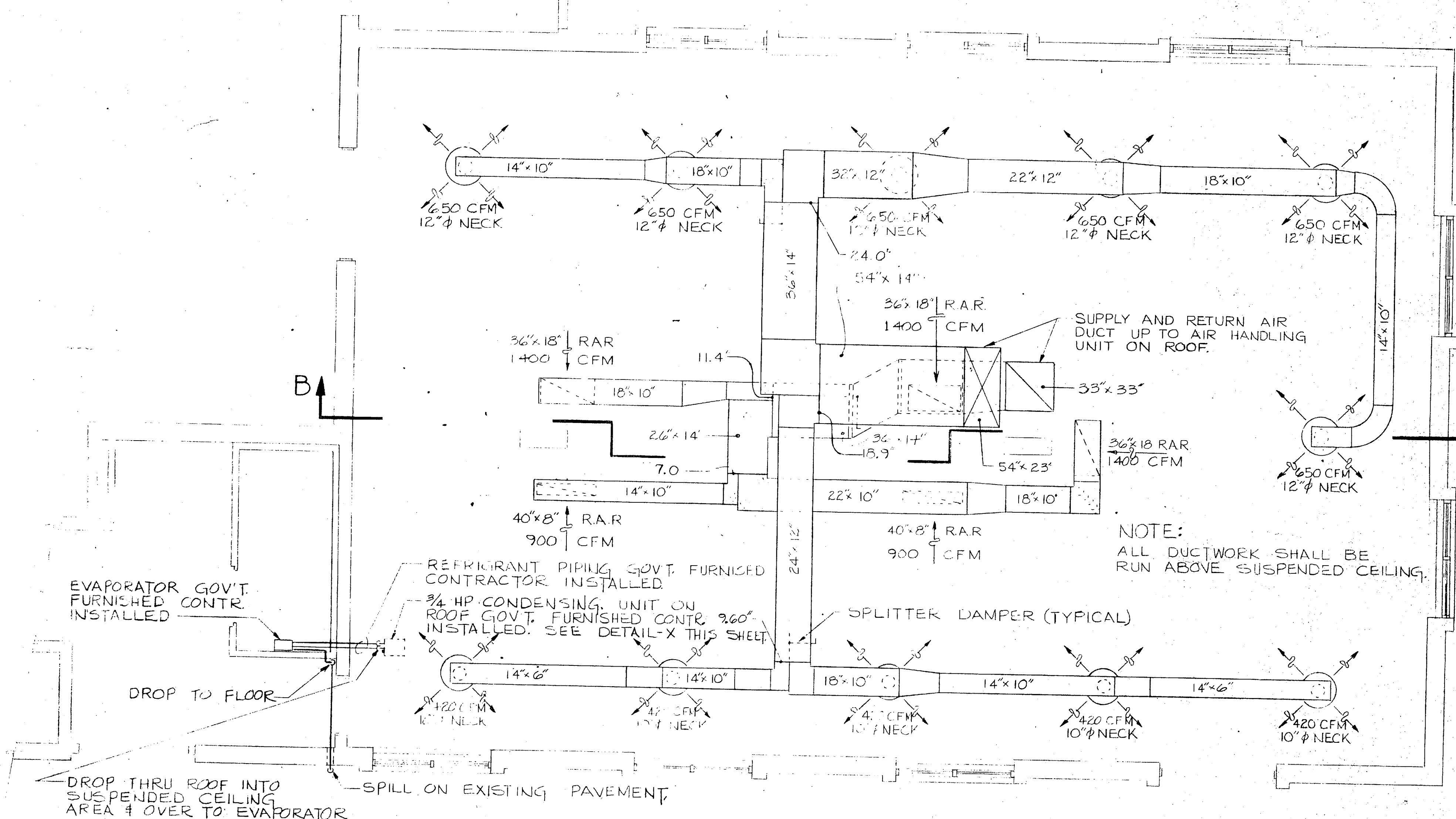
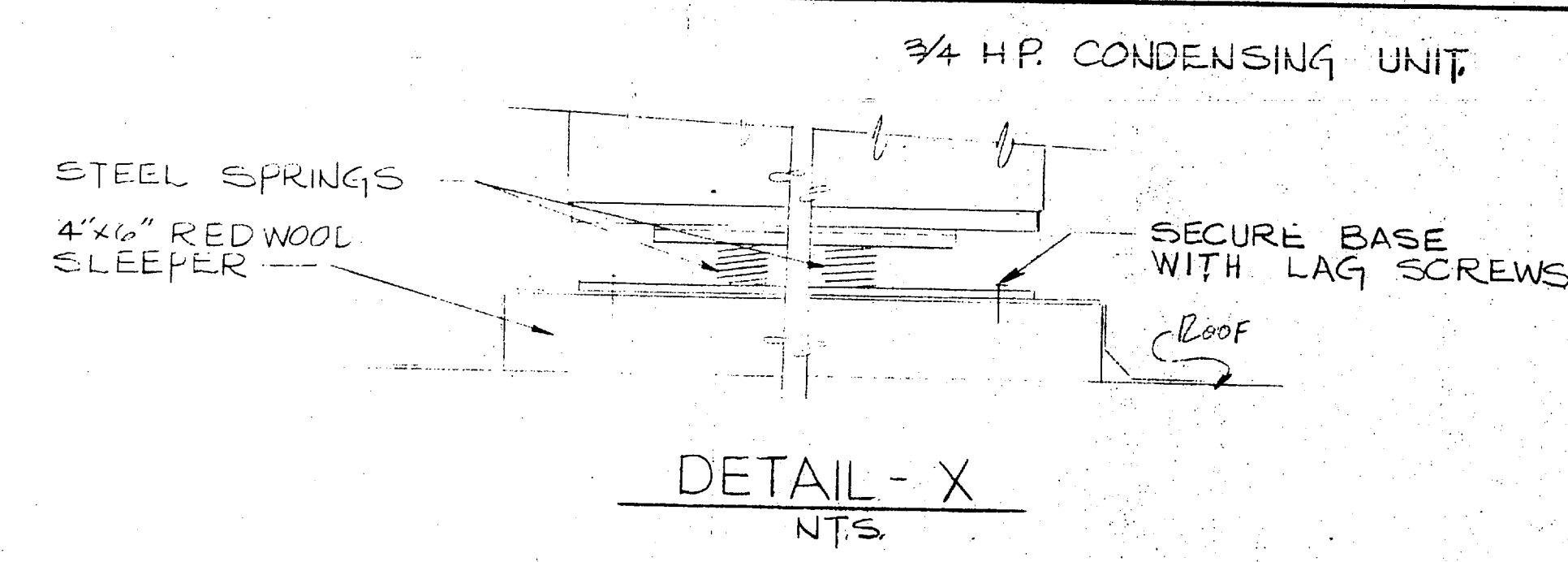


AS-710

EPD DWG. NO. 84057	DEPARTMENT OF THE NAVY NAVAL FACILITIES ENGINEERING COMMAND
WORK REG. NO. 69-286	ATLANTIC DIVISION
DES. JENKINS - KERN	NAVAL STATION NORFOLK, VA.
DRWN. KERN	MCAS (H) NEW RIVER JACKSONVILLE, N.C.
TR.	COMMISSIONED OFFICERS MESS
CHK. JHW	(OPEN) ADDITION
BR. MGR. JHW	MECHANICAL PIPING PLANS
DES. DIR. JHW	
SATISFACTORY TO DATE	
APPROVED: J.A. Smith	DATE: 8-3-57
FOR THE COMMANDER NAVFAC	
SIZE: F	CODE IDENT. NO. 80091
	REVISION NO. 1338657
	CONTRACT NO. N62470-70-00000
	SCALE: GRAPHIC SPEC. 05-70-0826 SHEET 9 OF 11



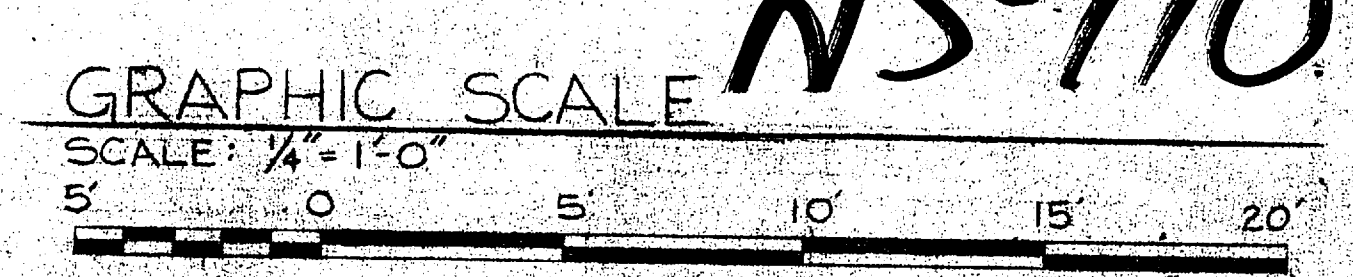
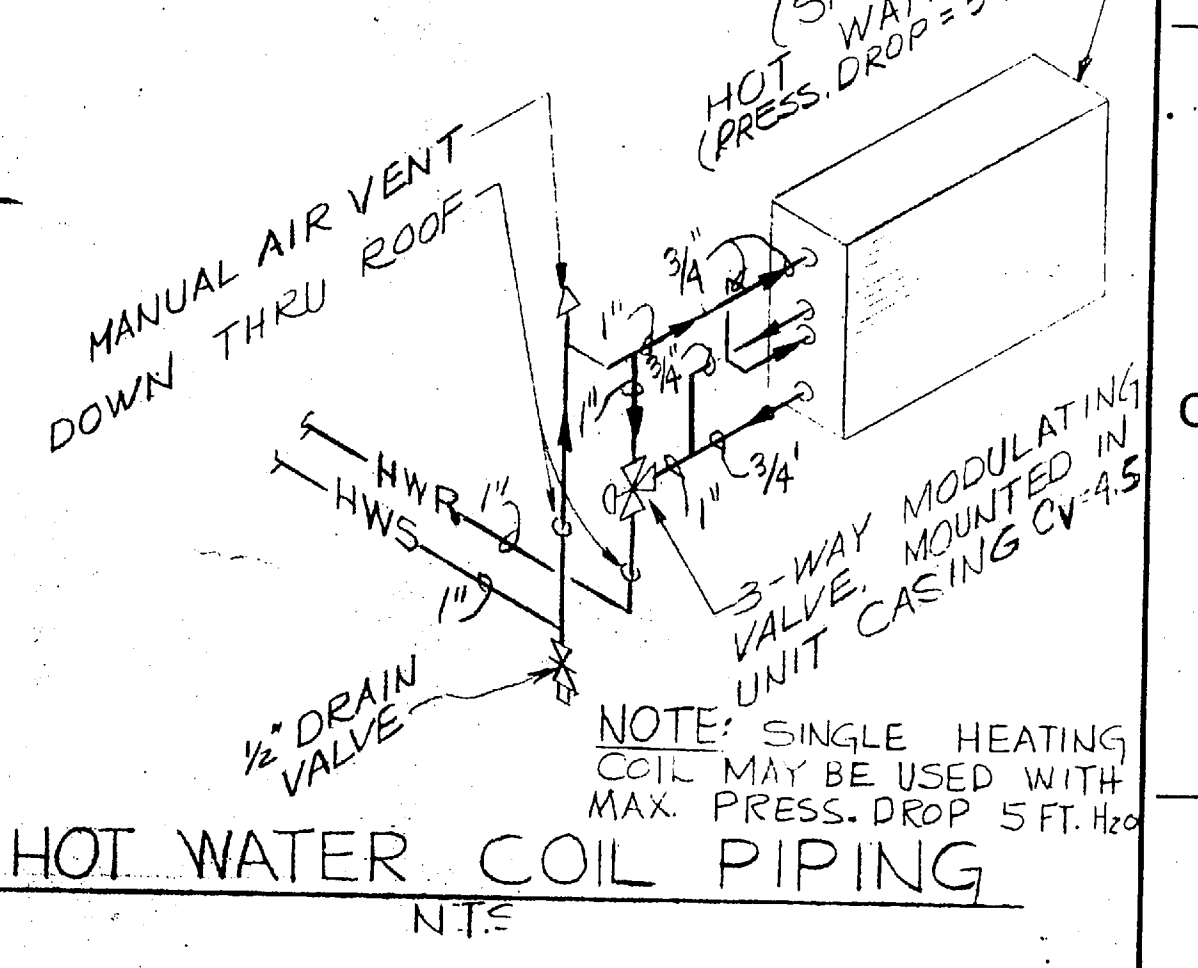
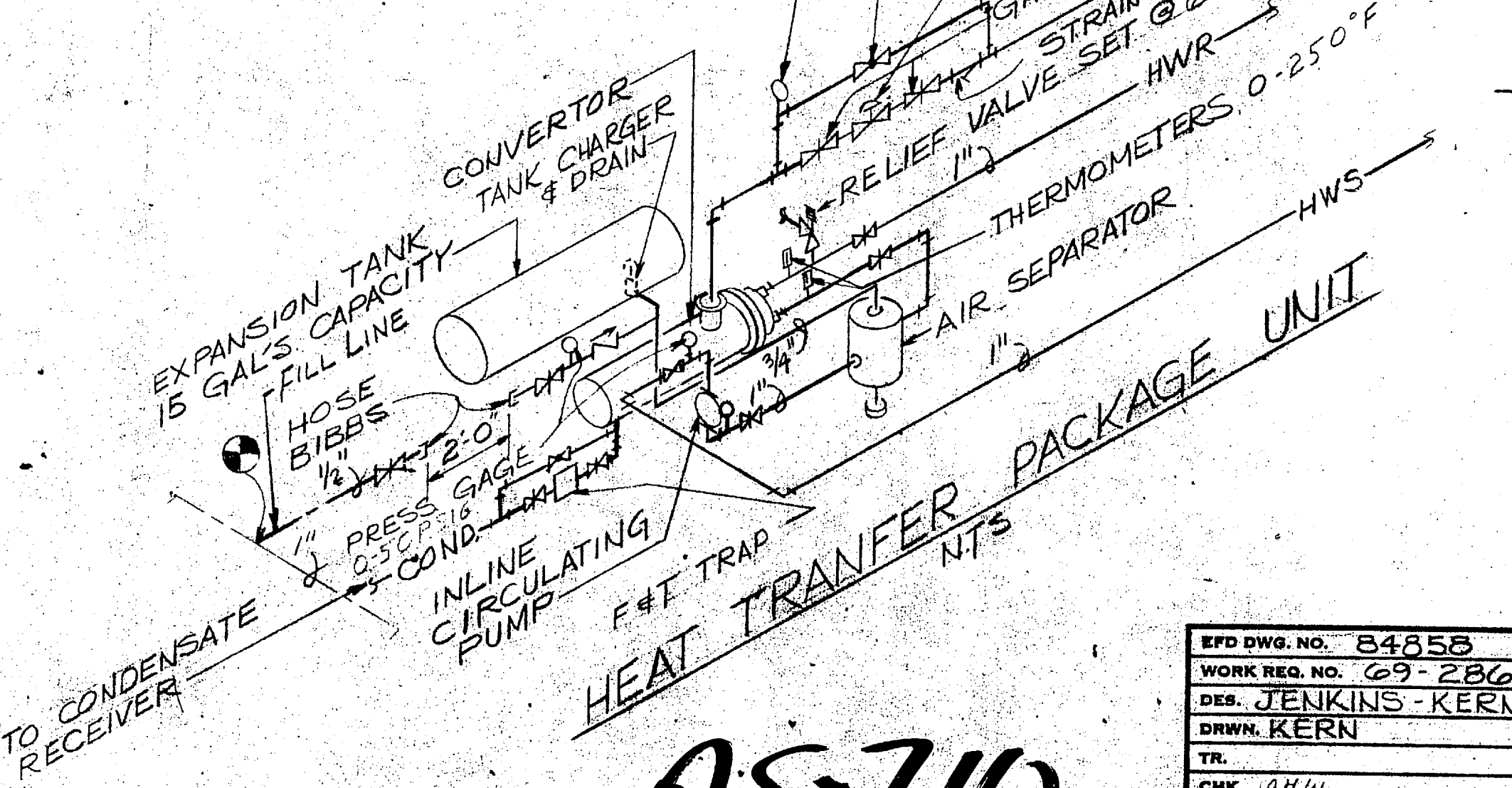
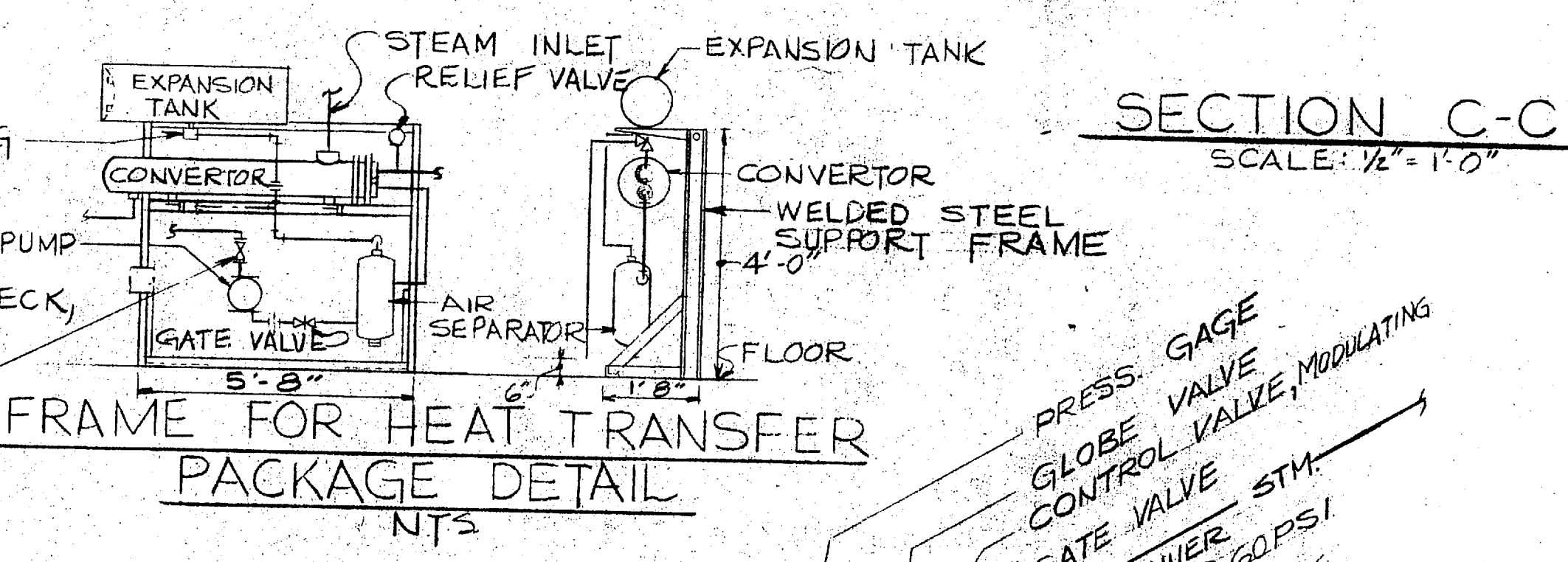
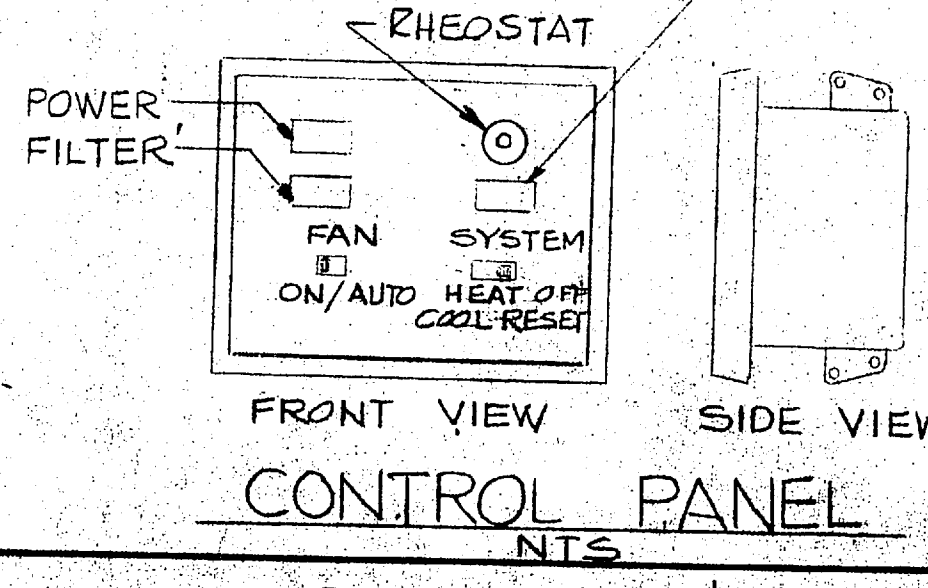
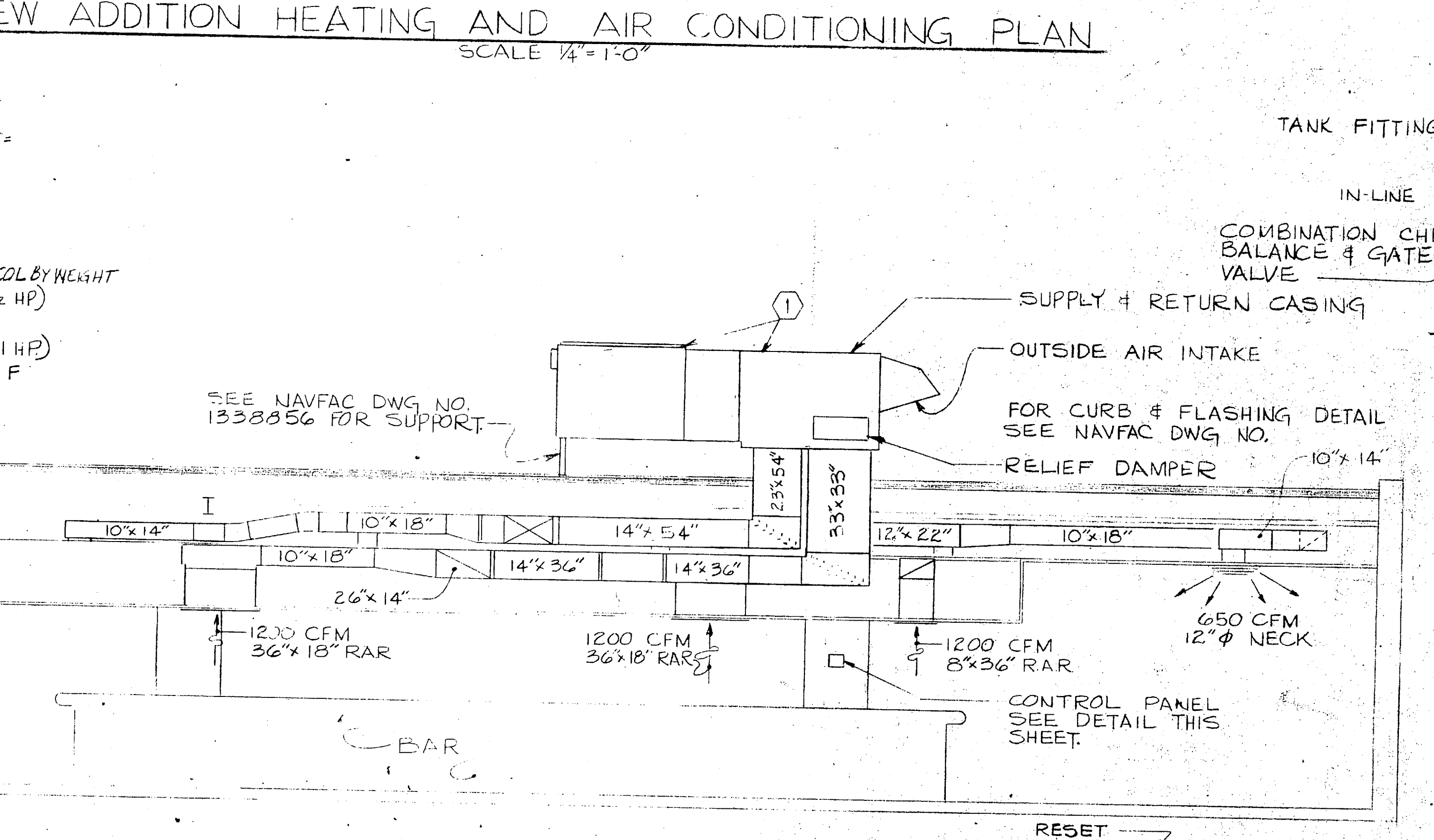
REVISIONS			
NO.	DESCRIPTION	DATE	APPROVED



EQUIPMENT SCHEDULE

1 HORIZONTAL PACKAGED HEATING/COOLING UNIT (FACTORY ASSEMBLED)
 CFM = 6000; E.A.T. = 80.15/73.65 F; AMBIENT = 90 F EXTERNAL STATIC PRESSURE = 1/4" W.G.
 COOLING CAPACITY - 204.7 MBH TOTAL, 108.3 SENSIBLE
 HEATING CAPACITY - 58.6 MBH HOT WATER COIL BASED ON 190 F E.W.T. AND 62.6 F E.A.T. 30% GLYCOL BY WEIGHT
 COMPRESSOR - KW INPUT TOTAL (2) - 22.60 (2-7 1/2 HP)
 EVAPORATOR FAN - KW INPUT 3.45 (1-5 HP)
 CONDENSER FAN - KW INPUT TOTAL (2-2.8) (2-1HP)
 CONDENSING TEMP @ 90 F AMBIENT 126.9 F
 SUCTION TEMP - 43.0 F
 UNIT WEIGHT WITH FILTER CASING 2915 LBS. 25 F AMBIENT OPERATION THERMOSTAT AND SUBBASE MODULATING FOR HEATING; TWO STAGE FOR COOLING; SUBBASE HAS MANUAL HEAT OFF-COOL AND ON-AUTO SWITCHES PROVIDE ECONOMIZER CYCLE FOR 0-100% OUTSIDE AIR; FREE COOLING WHEN OUTSIDE AIR IS BELOW INDOOR TEMP; DAMPER OPERATION CONTROLLED BY MIXING AIR THERMOSTAT. PROVIDE RHEOSTAT FOR MIN. OUTSIDE AIR FROM CONDITIONED SPACES.

2 HEAT TRANSFER PACKAGED UNIT (FACTORY ASSEMBLED)
 EXPANSION TANK - 15 GAL'S.
 HEAT EXCHANGER - 4 PSI STEAM @ 5 GPM (190-170 F) WATER CONTAINING 30% BY WEIGHT GLYCOL SOLUTION
 CIRCULATOR - 6.5 GPM, 28 FT. HEAD, 1/2 HP BASED ON 30% BY WEIGHT GLYCOL SOLUTION
 STEAM CONTROL VALVE - 205 LBS/AIR, 4 PSI DROP
 F.T. TRAP CAPACITY - 400 LBS/HR AT 2 PSI DROP



EPD DWG. NO. 84558 WORK FILE NO. 69-286 DES. JENKINS-KERN DRWN. KERN TR. CHK. JHW BR. MGR. JHW DES. DIR. J-D SATISFACTORY TO _____ DATE _____ APPROVED _____ DATE _____ FOR USE FOR CONSULTING PURPOSES	DEPARTMENT OF THE NAVY NAVAL FACILITIES ENGINEERING COMMAND ATLANTIC DIVISION NAVAL STATION NORFOLK, VA. MCAS (H) NEW RIVER, JACKSONVILLE, N.C. COMMISSIONED OFFICERS MESS (OPEN) ADDITION MECHANICAL HEATING & AIR CONDITIONING PLAN & DETAIL SIZE CODE INVT. NO. 1338858 F 80091 CONST. CONTR. NO. N62470-70-B-0826 SCALE AS NOTED SPEC. 05-70-0826 SHEET 10 OF 11
---	---

