

REVISION A
DEC. 7, 1943

PLAN
Scale 3/8" = 1'-0"

NOTE
Discharge header & drain header shall be at extra strong pipe.
Contractor shall submit a boiler & stack setting plan for approval.

PNO REVISION B
APRIL 13, 1944

TYPICAL CONNECTIONS FOR FEED WATER REGULATOR
No Scale

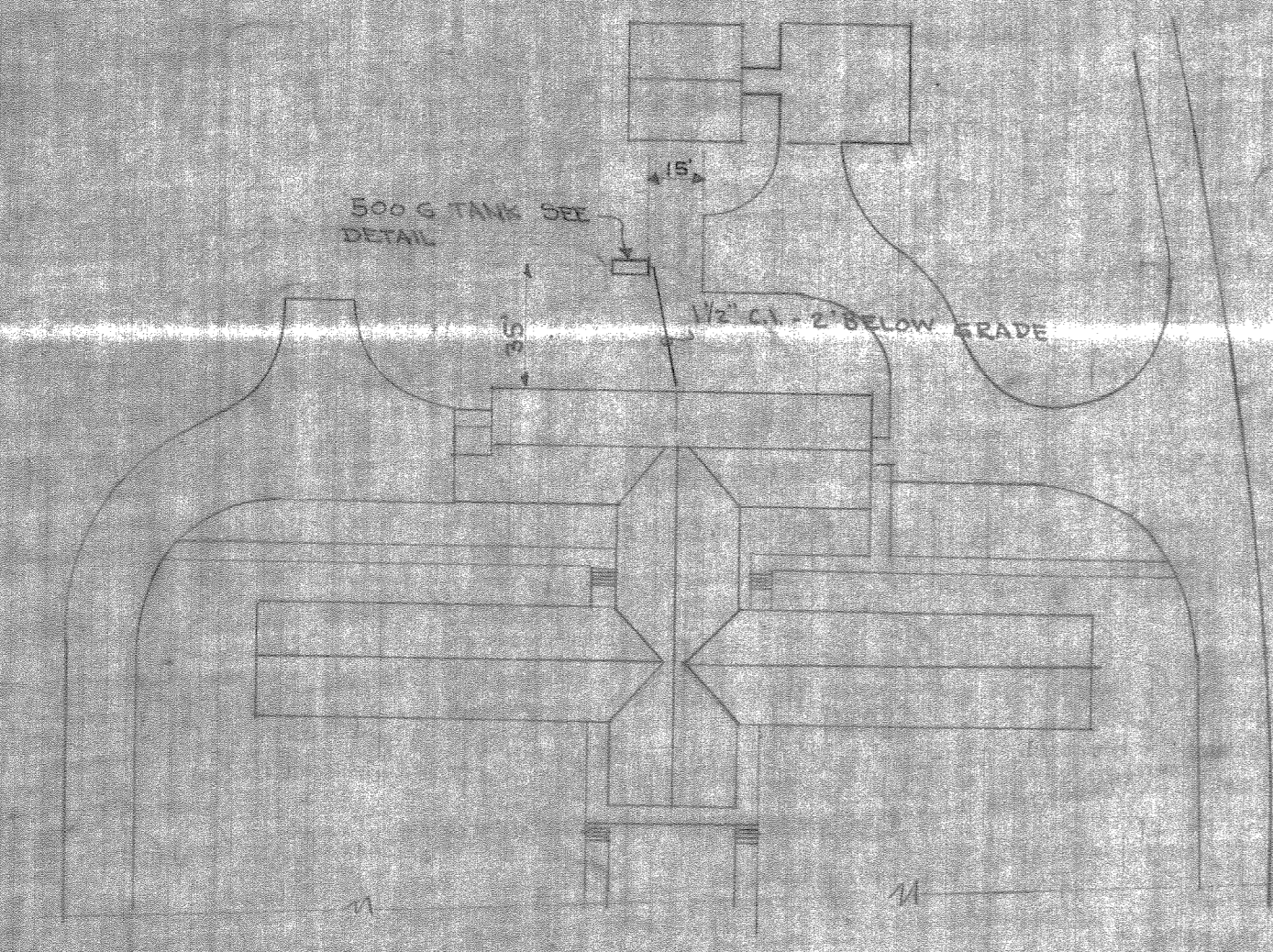
REV. BY	DATE	DESCRIPTION
B	6-12-44	ADD DRAIN LINE TO DRAIN TRENCH
A	12-7-43	CHANGED BOILER PRESSURE FROM 125 TO 100

DRAWN BY: Hawk
 CHECKED BY: Hawk
 APPROVED BY: J. E. Greiner
 DATE: Nov. 13, 1943
 SCALE: As Shown
 PROJECT NO.: 287968
 SHEET NO.: 12098

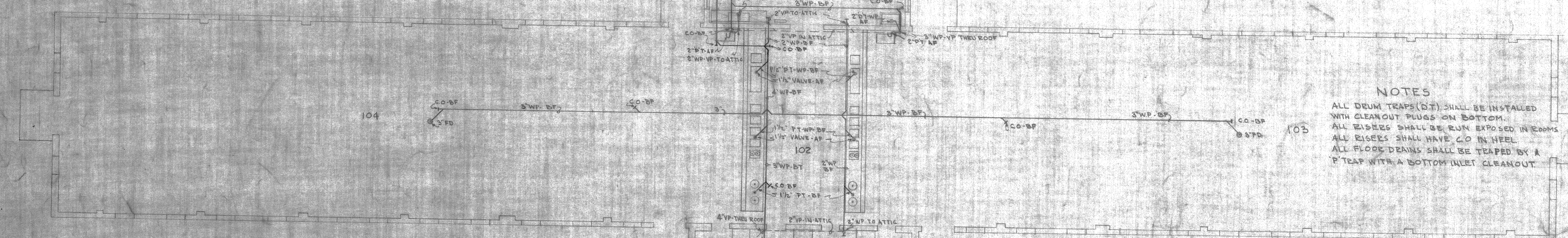
CARR & J. E. GREINER CO. - ARCHITECT-ENGINEERS
 DURHAM, N. C. BALTIMORE, MD.
CAMP LEJEUNE - NEW RIVER, N.C.
 BUREAU OF YARDS AND DOCKS - U. S. NAVY
SIGNAL SCHOOL FACILITIES
HEATING PLANT
PIPING PLAN & DETAILS

APPROVED: J. E. Greiner
 REPORT OFFICE IN CHARGE: J. E. Greiner
 SHEET NO.: 12098

CONTRACT NO. 7246

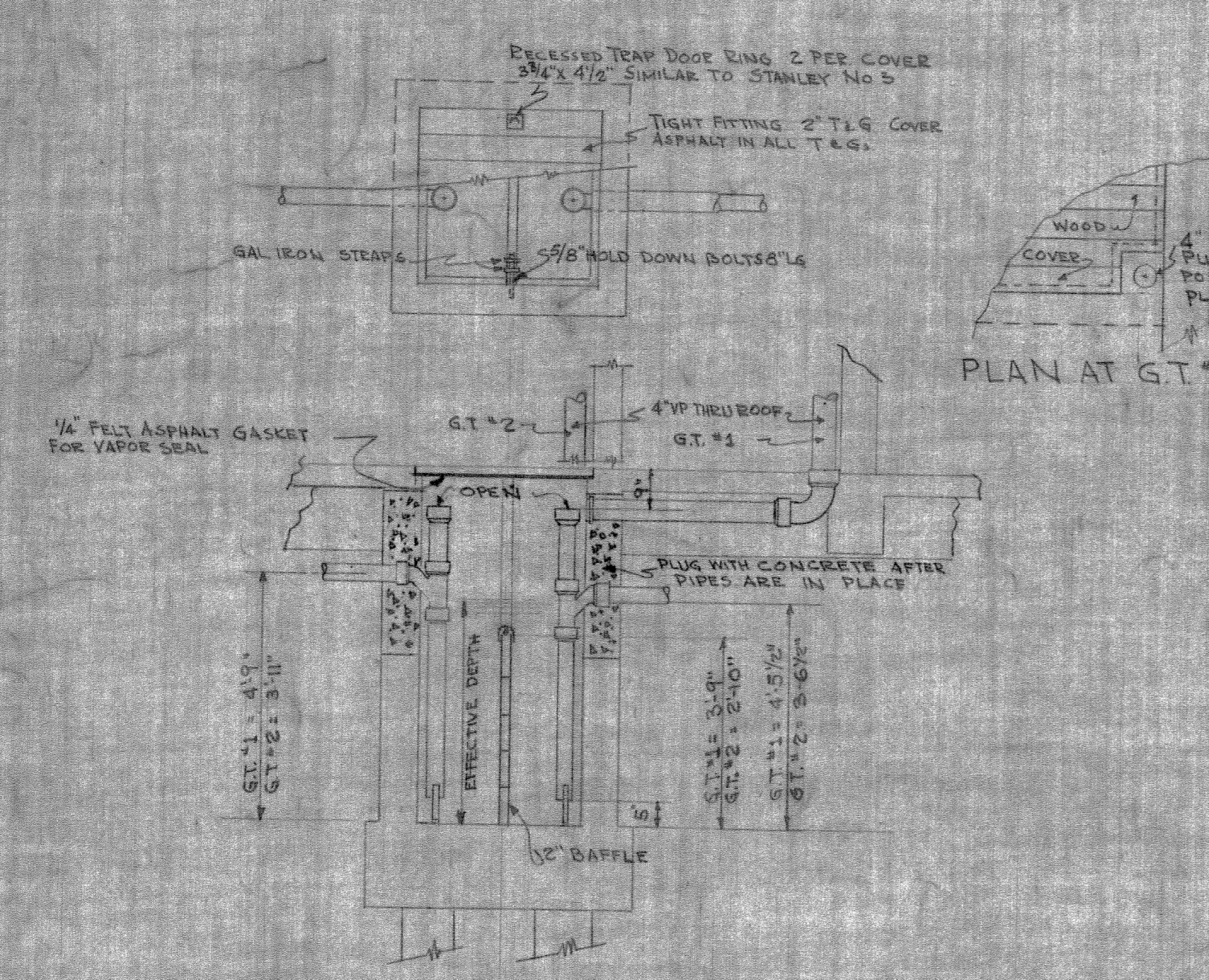


LOCATION PLAN
Scale 1/8" = 1'-0"



NOTES
 ALL DEUM TRAPS (DT) SHALL BE INSTALLED WITH CLEANOUT PLUGS ON BOTTOM.
 ALL RISERS SHALL BE RUN EXPOSED IN ROOMS.
 ALL RISERS SHALL HAVE C.O. IN NEEL.
 ALL FLOOR DRAINS SHALL BE TRAPED BY A P TRAP WITH A BOTTOM INLET CLEANOUT.

P.W.O. REVISION 'B'
FEB. 25, 1944



GREASE TRAPS 1 & 2
NO SCALE

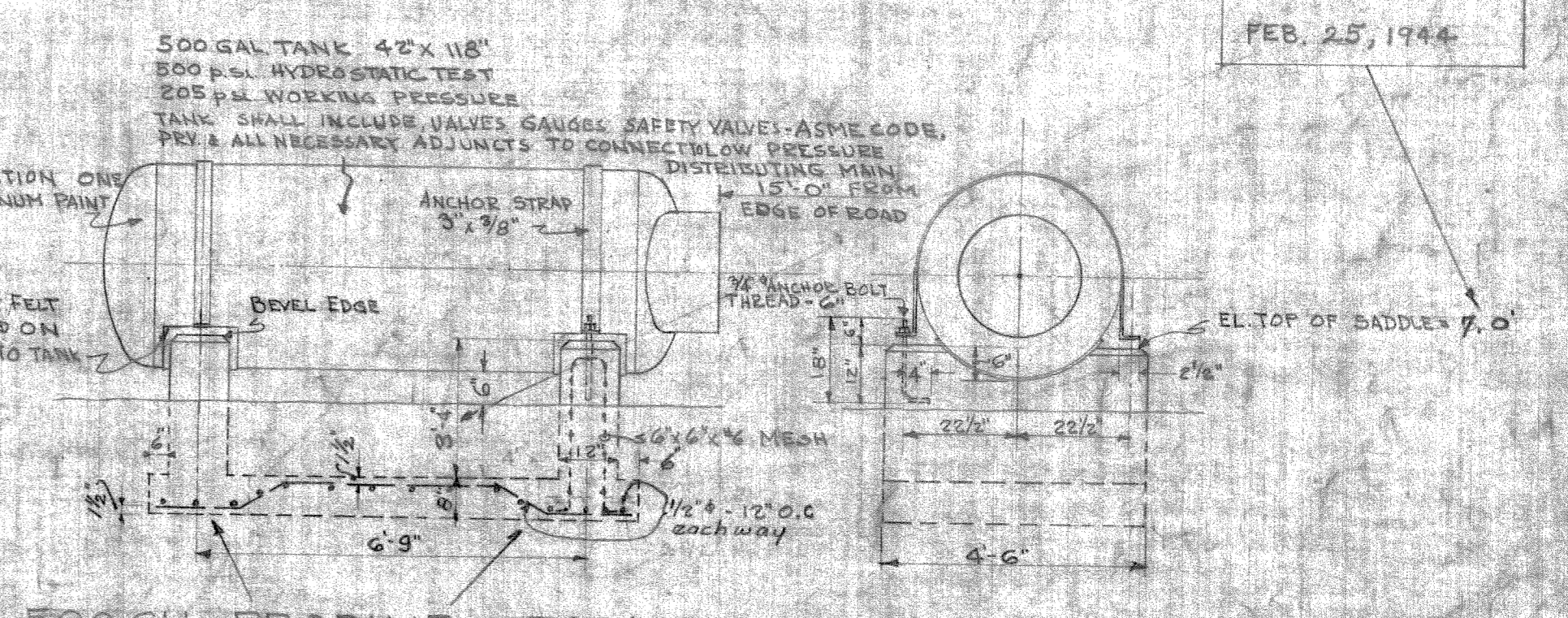
PLUMBING FIXTURE SCHEDULE

FIXTURE	LOCATION	SPEC. & NO.	SPEC.	NO.	TRIM
WATER CLOSET	ALL	W.P. 5414.148	W.P. 5414	CEB	
URINAL	ALL	PE 223. P2	COMPLETE AS SHOWN		
LAVATORIES	ALL	PE 223. P3	COMPLETE AS SHOWN		
FLOOR DRAIN	ALL	W.P. 5414.106	OMIT CLAMP RING		
SINK, COFFIN'S	105	W.P. 5414.636	W.P. 5414	Fig 85 Fig 14	
SINK, SCULLERY	103	W.P. 5414.108	W.P. 5414	Fig 85 Fig 94	
SINK, UTILITY	105	W.P. 5414.107			
SINK	102 & 107	W.P. 5414.107			
FIRE HOSE TACK	ALL	W.P. 5414.111	COMPLETE AS SHOWN		

U TRAP SHALL BE A 2" DEUM TRAP
 (2) HOSE SHALL BE 10' LONG

CAFETERIA COUNTERS
 CAFETERIA COUNTERS IN ROOM 102 SHALL BE 30" WIDE x 28" LONG x 36" HIGH. COUNTER SHALL HAVE:
 1. A DROPPED EDGE FOR CORNER USING 1/2" LONG x 2 1/2" WIDE x 1/2" DEEP. A CHAIR TURN TO 2" x 2" SHALL DRAIN THE ENTIRE UNIT SECTION.
 2. A STEAM TABLE SECTION 40" LONG x 20" WIDE x 12" DEEP WITH SUFFICIENT STEAM COIL CAPACITY. THE COIL SHALL HAVE 6 OPENINGS 11" X 1 1/2" FOR DIPS AND 2 ROUND POTS TO FIT 2 1/2" ROUND OPENINGS IN THE COIL LOWER OPENING ONE 11" X 1 1/2" AND THE OTHER 10" X 1 1/2".
 3. A DRAIN SHALL BE PROVIDED FOR STEAM COIL AND CORNER UNIT SECTIONS.
 4. IN FRONT OF COUNTER PROVIDE A TRAY RAIL OF 3" WOOD RAILS TO A WIDTH OF 12" SUPPORTED ON BRACKETS TO COUNTER.
 5. BRACKETS 10" x 2 1/2" ABOVE THE FLOOR SHALL BE PROVIDED WHERE POSSIBLE UNDER COUNTER. SHELF SECTION UNDER STEAM TABLE SHALL BE COMPLETELY ENCLOSED AND PROVIDED WITH SLIDING DOORS.
 6. COUNTER TOP SHALL BE POLISHED STEEL.
 7. COUNTER TOP SHALL BE BUILT UP A GAUGE TO ELIMINATE BUCKLING AND SHALL BE ANTI-RATTLE BRACES AND SUPPORTED TO MAKE A RIGID UNIT.

SCULLERY DISH TABLES
 DISH TABLES IN ROOM 101 SHALL CONFORM IN SHAPE TO THAT SHOWN ON PLAN. TABLES SHALL BE 36" WIDE x 30" HIGH WITH A 2 1/2" DROPPED TOP AND WITH A 1/2" DIAM. ROLL OVER EDGE. EACH COMPARTMENT OF THE TABLE COMPARTMENT SINKS SHALL BE 24" LONG x 18" WIDE AND 10" DEEP. PROVIDE EACH COMPARTMENT WITH THE FOLLOWING FITTINGS ALL AS SPECIFIED IN W.P. 5414.108: BRACKETS FIG. 13, 14, 15, 16, 17, 18, 19, 20, 21, 22, 23, 24, 25, 26, 27, 28, 29, 30, 31, 32, 33, 34, 35, 36, 37, 38, 39, 40, 41, 42, 43, 44, 45, 46, 47, 48, 49, 50, 51, 52, 53, 54, 55, 56, 57, 58, 59, 60, 61, 62, 63, 64, 65, 66, 67, 68, 69, 70, 71, 72, 73, 74, 75, 76, 77, 78, 79, 80, 81, 82, 83, 84, 85, 86, 87, 88, 89, 90, 91, 92, 93, 94, 95, 96, 97, 98, 99, 100. FLOOR OF 1/4" GAL STEEL AND LEGS SHALL BE 1/2" WIDE UNDER TABLES PROVIDE A SLATED SHELF 12" ABOVE FLOOR OMITTING SHELF UNDER FOOD HOPPERS & SINKS. TABLES SHALL BE MADE TURN OUT OF GALVANIZED STEEL AND ADAPTABLELY BRACED.



500 GAL PROPANE STORAGE TANK & FOUNDATIONS
Scale: 3/8" = 1'-0"

P.W.O. REVISION 'A'
FEB. 18, 1944

CONTRACT NO. 7248

CARR & J. E. GREINER CO.—ARCHITECT-ENGINEERS
 DURHAM, N. C.
 BALTIMORE, MD.
 CAMP LEJEUNE — NEW RIVER, N. C.
 BUREAU OF YARDS AND DOCKS — U. S. NAVY

SIGNAL SCHOOL FACILITIES
MESS HALL
PLUMBING-WASTE & VENT PIPING

DRAWN BY: W. H. HARRIS
 TRACED BY: W. H. HARRIS
 CHECKED BY: J. E. GREINER
 CHIEF ENGINEER: J. E. GREINER
 IN CHARGE: J. E. GREINER
 DATE: 11-18-43
 SCALE: SHOWN

287958

Y. & D. DRAWING NO.

APPROVED: J. E. GREINER
 BY: J. E. GREINER
 OFFICE IN CHARGE

REVISION: A
 DATE: 2-18-44
 DESCRIPTION: CHANGED ELEVATION FOR TOP OF STORAGE TANK

REVISION: B
 DATE: 2-25-44
 DESCRIPTION: REVISED FOUNDATION FOR STORAGE TANK

NO. 12018

H. S. PROJ. NO. P-23024
 H. S. DWG. NO. 5673

CHECKED WITH ARCH. PLAN #13664

NO.	DATE	CHECKED BY
ORIG.	11-18-43	W. H. HARRIS

