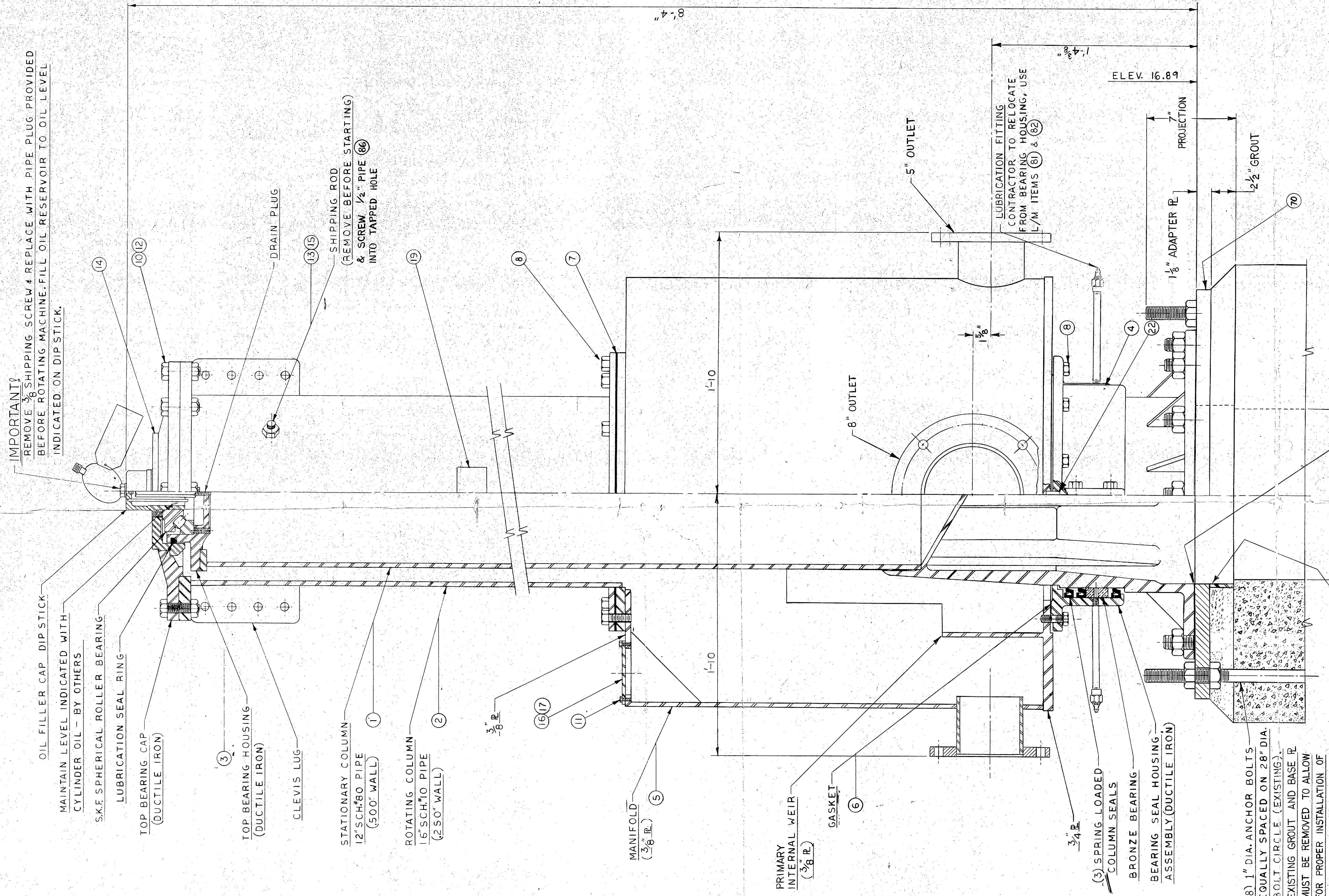


LIST OF COMPONENTS				WEIGHT	DRAWING NO.
TITLE	CTR. COLUMN ASSY	UNIT		#	H117701-102
	215 RD	ITEM		#	
NOTE: REFERENCE SYMBOLS, WHERE SHOWN, ARE TO ASSIST IN LOCATING COMPONENTS IN DIFFERENT VIEWS OF THIS DRAWING. ONLY ALL LENGTHS ARE FINAL LENGTHS UNLESS SPECIFIED AS ROUGH ("RSH").					
IT.	QUAN.	PART NUMBER	PART DESCRIPTION		
MATERIAL FOR ONE MK-100					
1	1	H117701-104	BASE # COLUMN ASSY		
2	1	H117701-107	COLUMN # FLANGE ASSY		
3	1	641-36616-81	TOP BEARING ASSY		
4	1	641-36518-81	BOTTOM BEARING # SEAL ASSY		
5	1	H117701-106	MANIFOLD ASSY		
6	1	341-20020-4	MANIFOLD GASKET		
7	1	541-11253-1	RING GASKET		
8	24	841-09940	5/8" X 1 1/2" H.H.C.S. Z PL		
9	1		15" ID X 23 3/4" O.D. X 1/8" CLOTH INS. RUBBER		
10	8	841-10880	3/4" X 3" HEX HD. CAP SCR. Z PL		
11	8	841-08450	5/16" X 5/8" HEX HD. CAP SCR. Z PL		
12	8	841-20360	3/4" HEX NUT Z PL		
13	2	841-20290	5/8" HEX NUT Z PL		
14	1	441-36634-3	BEARING CAP RING		
15	1		5/8" X 17 1/2" LG. THD. ROD Z PL		
16	2	141-20049-2	SIGHT HOLE COVER		
17	2	841-30430	PERMATEX GASKET		
19	1	341-20004-1	NAMEPLATE		
22	2	841-19350	DOWEL PIN 5/8" X 1" LG.		



**IMPORTANT!**  
REMOVE 3/8" SHIPPING SCREW & REPLACE WITH PIPE PLUG PROVIDED BEFORE ROTATING MACHINE. FILL OIL RESERVOIR TO OIL LEVEL INDICATED ON DIP STICK.

OIL FILLER CAP DIP STICK  
MAINTAIN LEVEL INDICATED WITH CYLINDER OIL - BY OTHERS  
S.K.F. SPHERICAL ROLLER BEARING  
LUBRICATION SEAL RING  
TOP BEARING CAP (DUCTILE IRON)  
TOP BEARING HOUSING (DUCTILE IRON)  
CLEVIS LUG  
STATIONARY COLUMN 12" SCH. 80 PIPE (500" WALL)  
ROTATING COLUMN 16" SCH. 10 PIPE (250" WALL)  
MANIFOLD (3/8" R.)  
PRIMARY INTERNAL WEIR (3/8" R.)  
GASKET (6)  
3/4" R.  
BRONZE BEARING BEARING SEAL HOUSING ASSEMBLY (DUCTILE IRON)  
3/4" R.  
LUBRICATION FITTING CONTRACTOR TO RELOCATE FROM BEARING HOUSING, USE L/M ITEMS (61) & (62)  
5" OUTLET  
ELEV. 16.89  
PROJECTION  
1 1/8" ADAPTER R.  
2 1/2" GROUT  
14" DIA. SUPPLY  
9 GASKET

(8) 1" DIA. ANCHOR BOLTS EQUALLY SPACED ON 28" DIA. BOLT CIRCLE (EXISTING). EXISTING GROUT AND BASE R. MUST BE REMOVED TO ALLOW FOR PROPER INSTALLATION OF ADAPTER R. FURNISHED BY ENVIREX. RE-GROUT AS SHOWN.

FORM GROUT SEAL AS SHOWN WITH 1/2" X 3" FIBRE ASPHALT IMPREGNATED EXPANSION JOINT MATERIAL (BY OTHERS)

2 ASSYS PROVIDED THIS ORDER 1/4 M ITEM 60

ENG. CHANGE NOTICE NO.	REV. NO.	MICRO FILMED	DESCRIPTION OF REVISION	REV. BY	DATE

CUSTOMER	ONSLow UTILITIES, INC.	SCALE	3=1=0	TITLE	CENTER COLUMN ASSY.
LOCATION	CAMP LEJEUNE, N.C.	CUST. ORDER NO.	1283		215 RD.
ENGR.	CORP OF ENGINEERS	EST. NO.	70354	DR. N.	KAB
PROC. SPEC.		APP'D.		CK'D.	REL
CONFIDENTIAL - ALL RIGHTS RESERVED - PROPERTY OF Envirex a Hexnord Company			Water Quality Control Division Waukesha, WI 53186	DATE ISSUED	7-13-84
DIST.	MADE FROM	741-41118	ORDER NO.	H117701	DRAWING NO.
					H117701-102

100

100

100

100

100

100

100

100

100

100

100

100

100

100

100

100

100

100

100

100

100