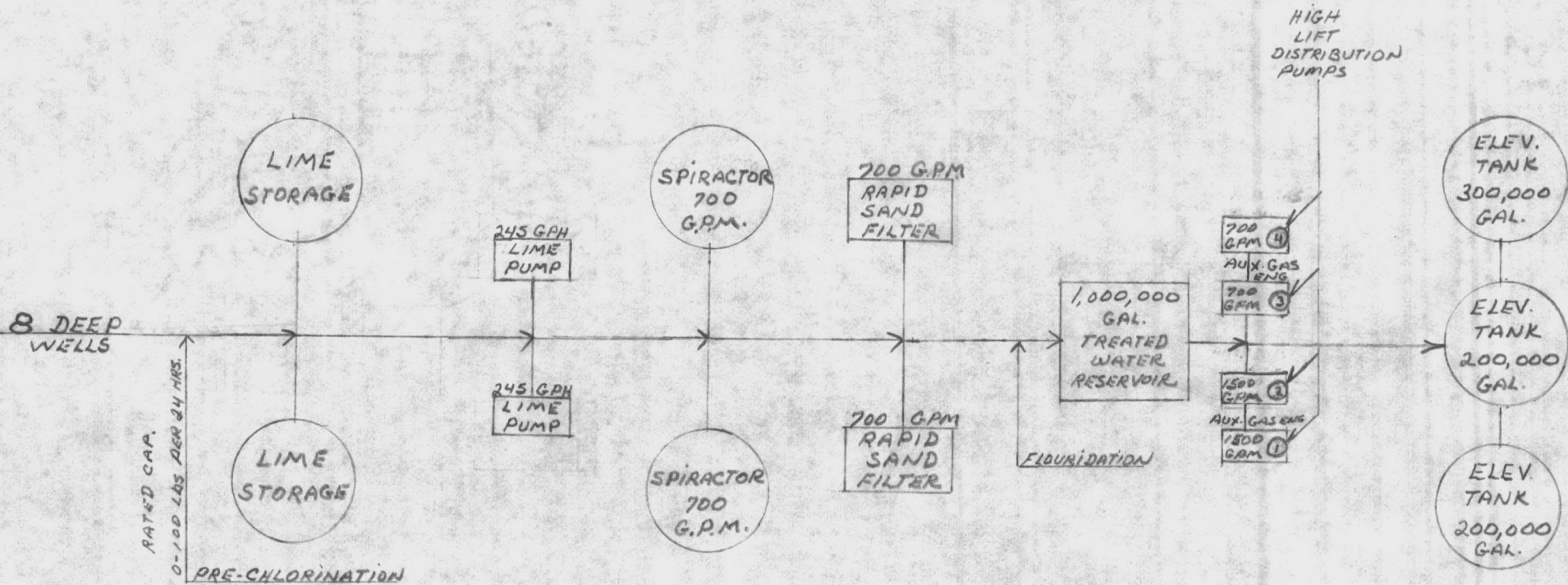


HOLCOMB BLVD. BLDG. 670

CAPACITY 2 MGD WITH 8 DEEP WELLS
LIME SOFTENING PLANT
WITH 85 KW GENERATOR





PARADISE POINT BLDG. 2615
SWIMMING POOL

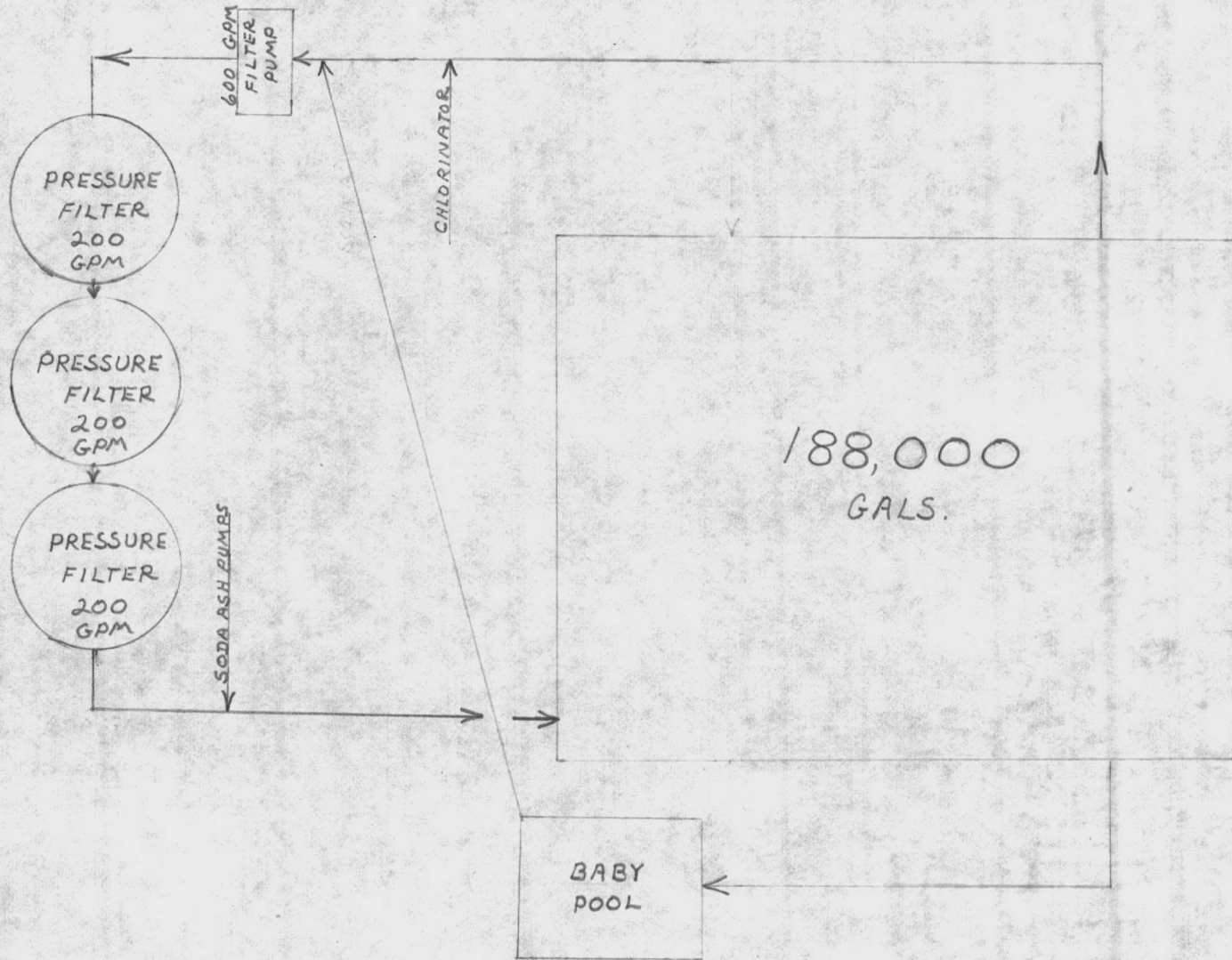




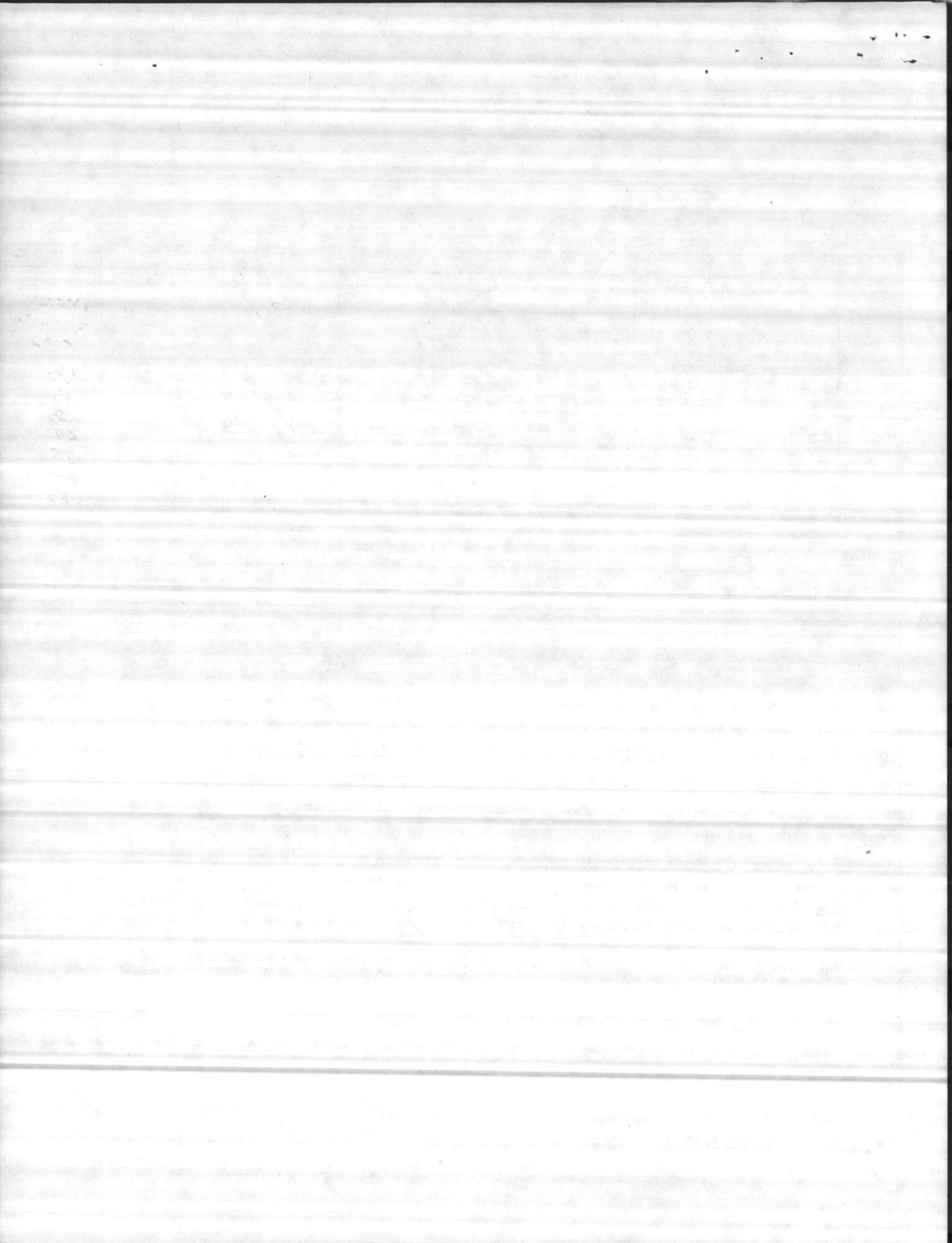
Table III C 3

WELL SURVEY SHEET*

Sheet No. 4DATE: 3-3-77

| WELL NO. | WELL TYPE | DRILLED DEPTH ft. | STATIC LEVEL (ft) | CASING SIZE (in.) | STAGES | DRAWDOWN AT RATED CAPACITY (feet) | RATED CAPACITY (gpm) | PRESENT CAPACITY (GPM) |
|----------|-----------|-------------------|-------------------|-------------------|--------|-----------------------------------|----------------------|------------------------|
| HB-643 | DRILLED | 245' | 24' | 10" | 4 | 36' | 260 | 250 |
| HB-644 | DRILLED | 255' | 22' | 10" | 5 | 44' | 260 | 280 |
| HB-645 | DRILLED | 270' | 18' | 10" | 4 | 34' | 260 | 200 |
| HB-646 | DRILLED | 270' | 17' | 10" | 3 | 28' | 260 | 150 |
| HB-647 | DRILLED | 200' | 24" | 10" | 3 | 25' | 260 | 200 |
| HB-648 | DRILLED | 265' | 22' | 10" | 4 | 77' | 230 | 200 |
| HB-649 | DRILLED | 284' | 24' | 10" | 5 | 65' | 400 | 300 |
| HB-650 | DRILLED | 179' | 15' | 10" | 5 | 74' | 260 | 225 |

| WELL NO. | SPECIFIC CAPACITY (gpm/ft of drawdown) | PUMP HEAD (ft) | MOTOR H. P. | CHLORINATION (AMOUNT) | RESIDUAL CHLORINE (ppm) | AUXILIARY POWER (type) | DD FORM | |
|----------|--|----------------|-------------|-----------------------|-------------------------|------------------------|---------|-----|
| | | | | | | | 710 | 686 |
| HB-643 | 7.2 | 124' | 15.0 | | | GASOLINE | | |
| HB-644 | 5.9 | 133' | 15.0 | | | | | |
| HB-645 | 7.6 | 103' | 10.0 | | | GASOLINE | | |
| HB-646 | 9.3 | 75' | 10.0 | | | GASOLINE | | |
| HB-647 | 10.4 | 91' | 10.0 | | | GASOLINE | | |
| HB-648 | 2.9 | 184' | 20.0 | | | | | |
| HB-649 | 6.2 | 199' | 20.0 | | | | | |
| HB-650 | 3.5 | 210' | 40.0 | | | | | |



Total flow / month
32,766,100 gal

Algg 670 Raw Water

DIETZGEN CORPORATION
MADE IN U.S.A.

NO. 340-T6 DIETZGEN GRAPH PAPER
ONE MONTH BY DAYS

gallons

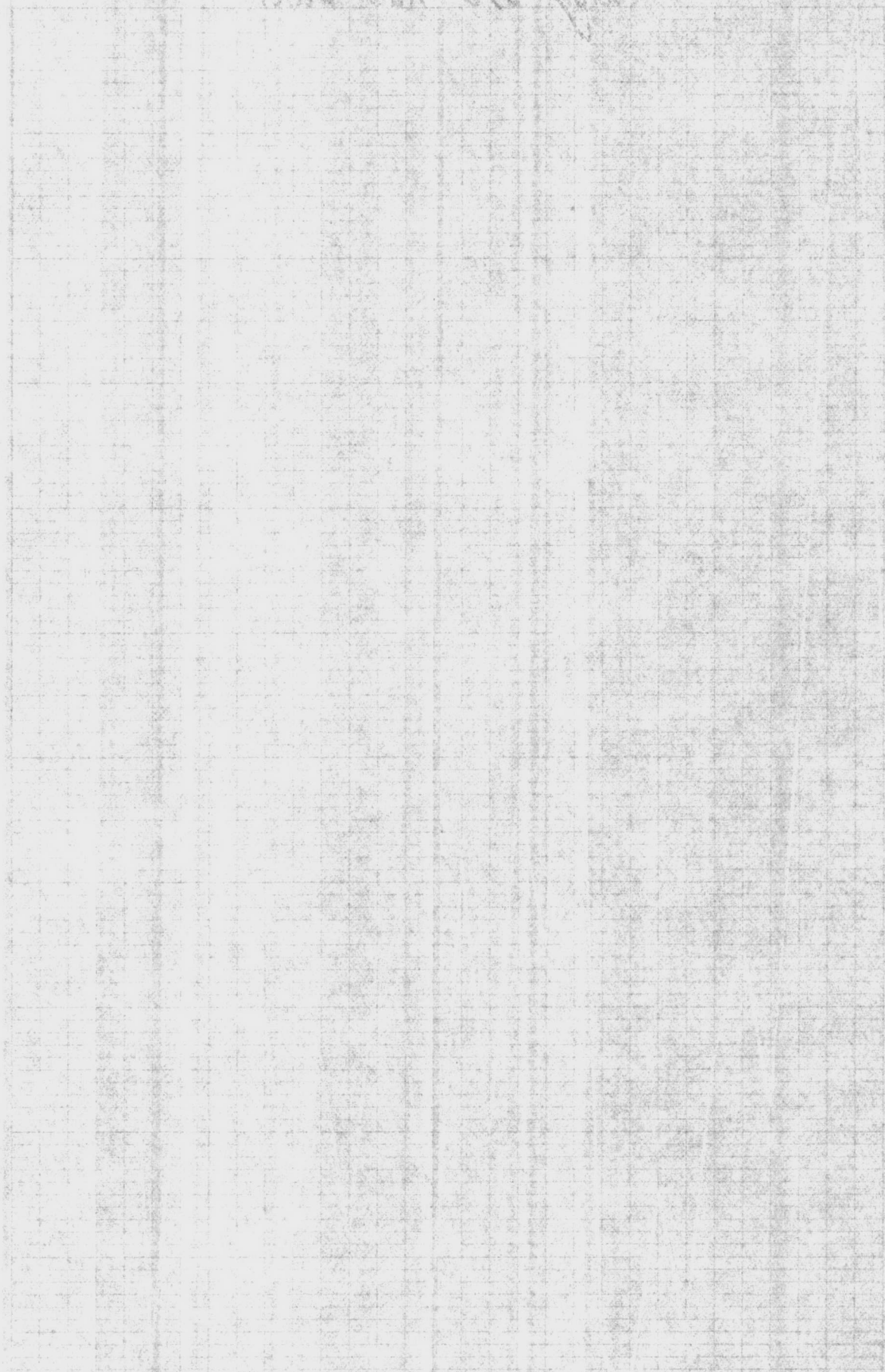
1,350,000
1,500,000
1,450,000
1,400,000
1,350,000
1,300,000
1,250,000
1,200,000
1,150,000
1,100,000
1,050,000
1,000,000



Avg daily flow

MONTH February 1979

Handwritten text at the top of the page, possibly a title or header.



8 9 10 11 12 13 14 15 16 17 18 19 20 21 22 23 24 25 26 27 28 29 30 31 32 33 34 35 36 37 38 39 40 41 42 43 44 45 46 47 48 49 50 51 52 53 54 55 56 57 58 59 60 61 62 63 64 65 66 67 68 69 70 71 72 73 74 75 76 77 78 79 80 81 82 83 84 85 86 87 88 89 90 91 92 93 94 95 96 97 98 99 100

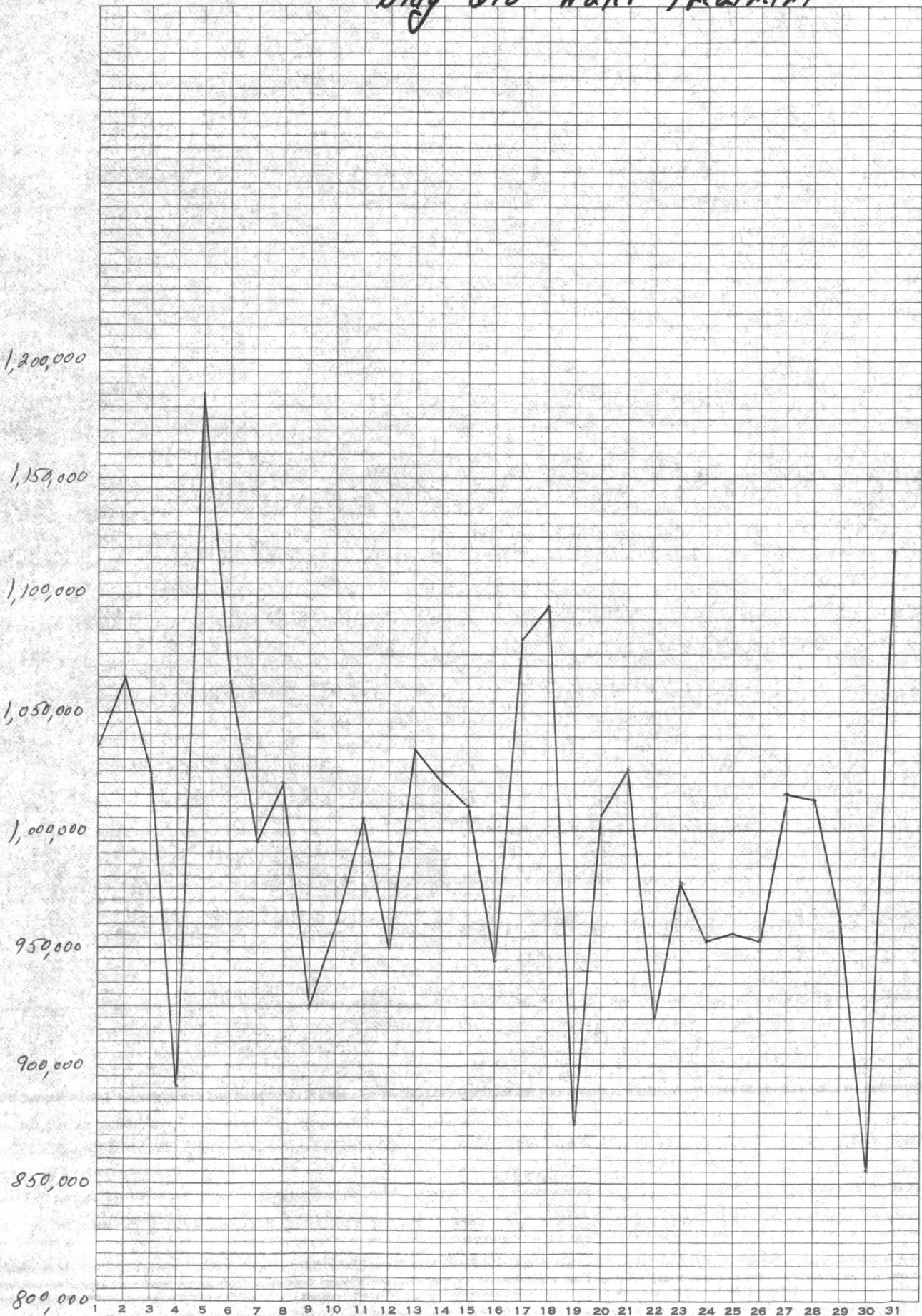
Handwritten text at the bottom of the page, possibly a signature or footer.

THE UNIVERSITY OF CHICAGO PRESS
500 EAST RITCHIE STREET
CHICAGO, ILLINOIS 60607

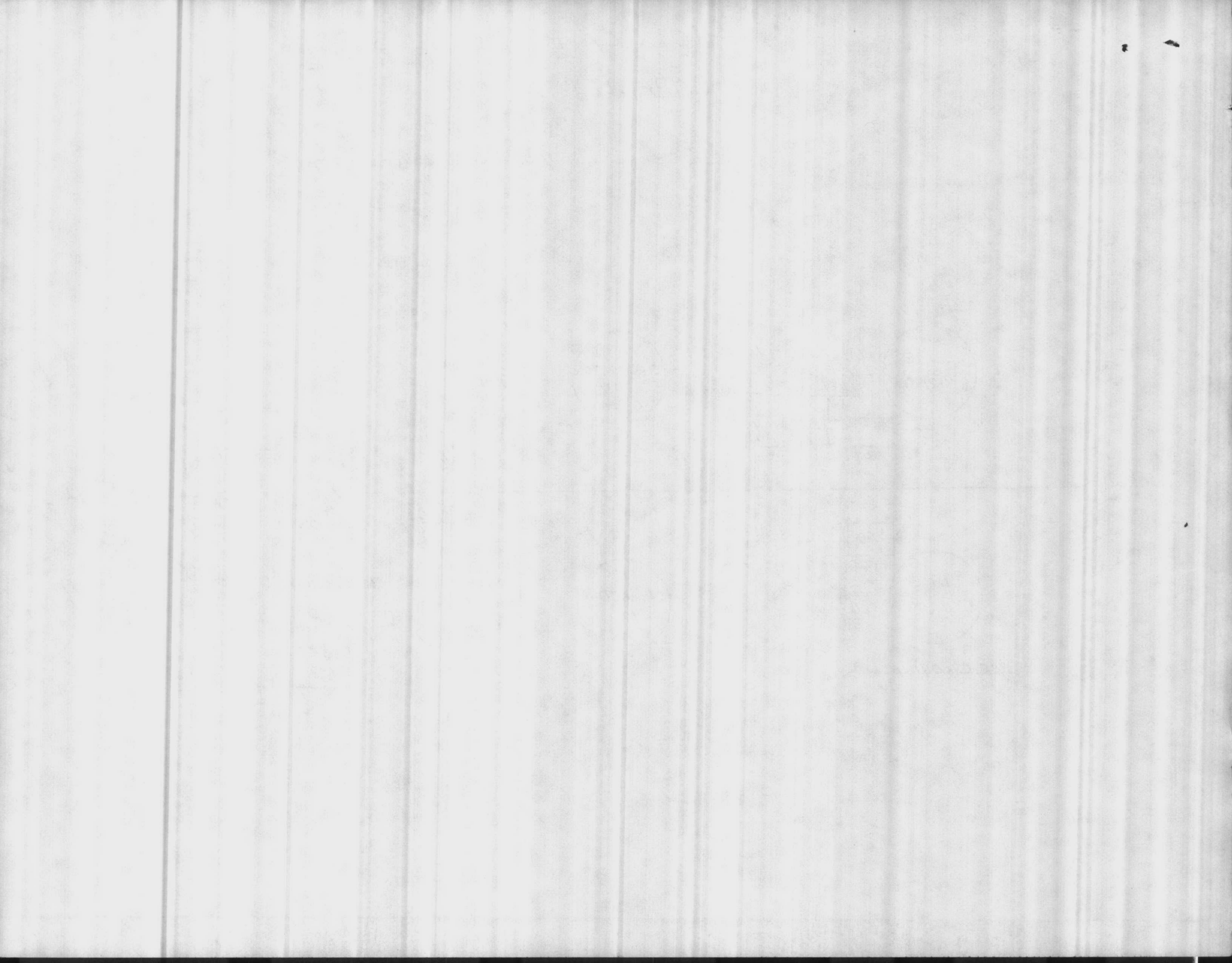
Bldg 670 Water Treatment

DIETZGEN CORPORATION
MADE IN U. S. A.

NO. 340-T6 DIETZGEN GRAPH PAPER
ONE MONTH BY DAYS



MONTH January 1979

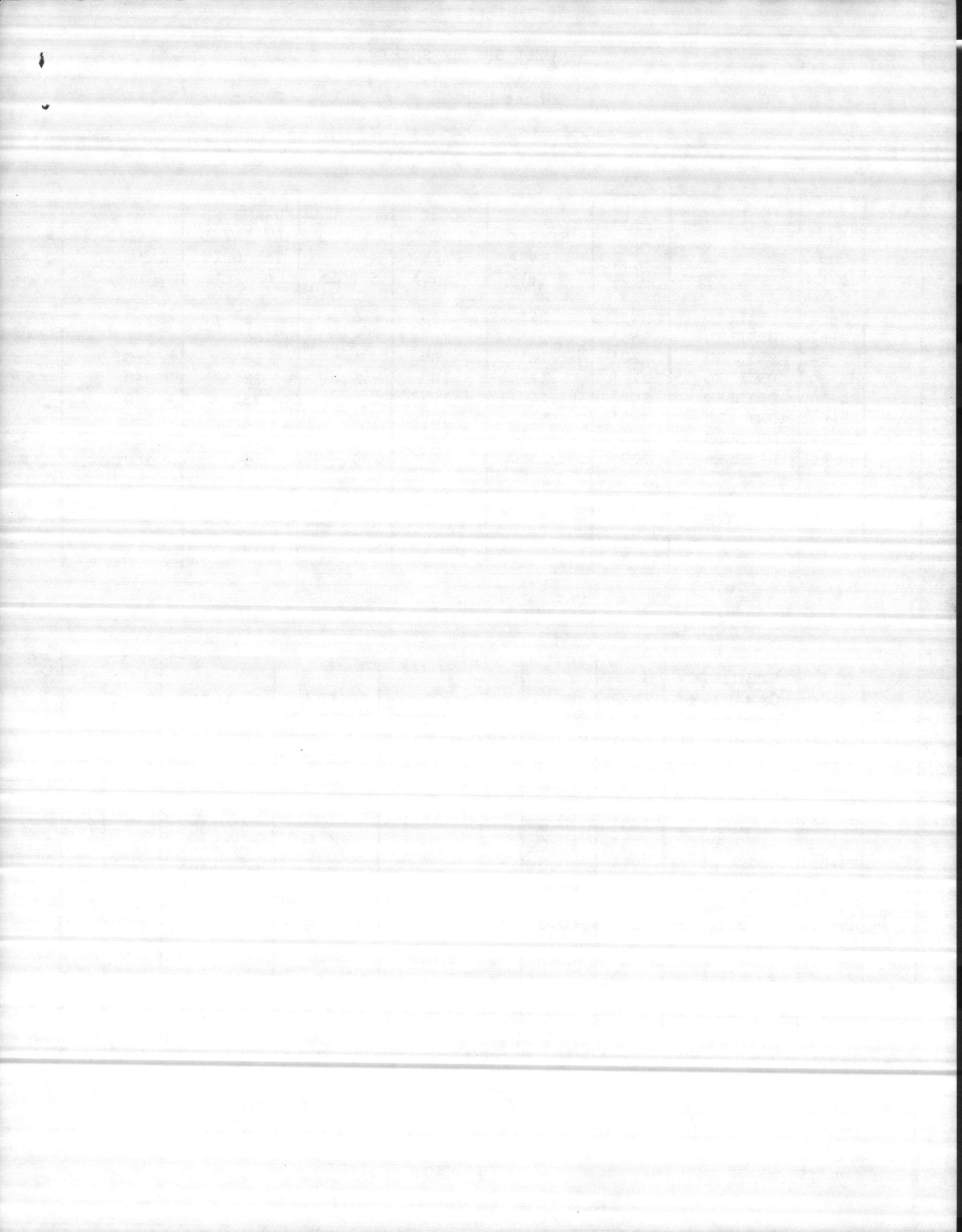


WELL SURVEY SHEET*

Sheet No. 4DATE: 3-3-77

| WELL NO. | WELL TYPE | DRILLED DEPTH ft. | STATIC LEVEL (ft) | CASING SIZE (in.) | STAGES | DRAWDOWN AT RATED CAPACITY (feet) | RATED CAPACITY (gpm) | PRESERVED CAPACITY (GPM) |
|----------|-----------|-------------------|-------------------|-------------------|--------|-----------------------------------|----------------------|--------------------------|
| HB-643 | DRILLED | 245' | 24' | 10" | 4 | 36' | 260 | 250 |
| HB-644 | DRILLED | 255' | 22' | 10" | 5 | 44' | 260 | 280 |
| HB-645 | DRILLED | 270' | 18' | 10" | 4 | 34' | 260 | 200 |
| HB-646 | DRILLED | 270' | 17' | 10" | 3 | 28' | 260 | 150 |
| HB-647 | DRILLED | 200' | 24" | 10" | 3 | 25' | 260 | 200 |
| HB-648 | DRILLED | 265' | 22' | 10" | 4 | 77' | 230 | 200 |
| HB-649 | DRILLED | 284' | 24' | 10" | 5 | 65' | 400 | 300 |
| HB-650 | DRILLED | 179' | 15' | 10" | 5 | 74' | 260 | 225 |

| WELL NO. | SPECIFIC CAPACITY (gpm/ft of drawdown) | PUMP HEAD (ft) | MOTOR H. P. | CHLORINATION (AMOUNT) | RESIDUAL CHLORINE (ppm) | AUXILIARY POWER (type) | DD FORM | |
|----------|--|----------------|-------------|-----------------------|-------------------------|------------------------|---------|-----|
| | | | | | | | 710 | 686 |
| HB-643 | 7.2 | 124' | 15.0 | | | GASOLINE | | |
| HB-644 | 5.9 | 133' | 15.0 | | | | | |
| HB-645 | 7.6 | 103' | 10.0 | | | GASOLINE | | |
| HB-646 | 9.3 | 75' | 10.0 | | | GASOLINE | | |
| HB-647 | 10.4 | 91' | 10.0 | | | GASOLINE | | |
| HB-648 | 2.9 | 184' | 20.0 | | | | | |
| HB-649 | 6.2 | 199' | 20.0 | | | | | |
| HB-650 | 3.5 | 210' | 40.0 | | | | | |



PARADISE POINT BLDG. 2615
SWIMMING POOL

