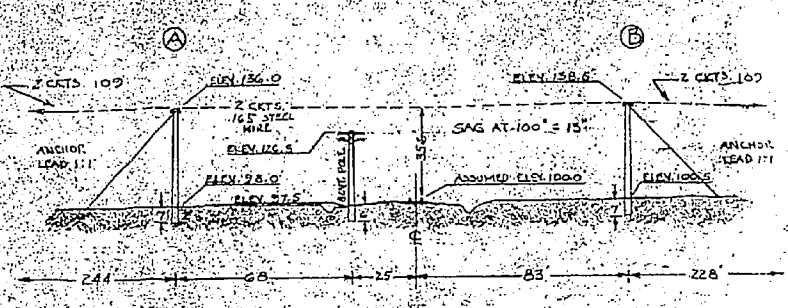
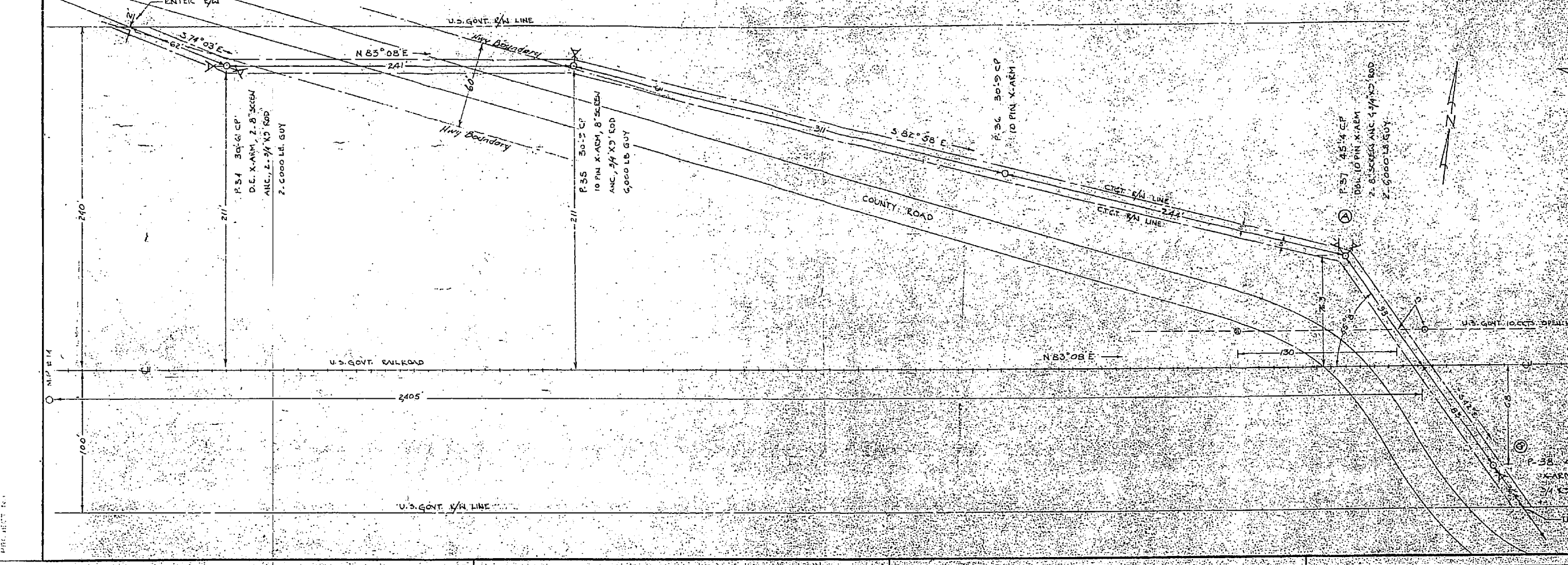


**PLAN**  
SCALE: 1" = 40'

**PROFILE**  
SCALE: 1" = 40'



**REVISIO TO SHOW RELATION TO NEW BOUNDARY 1-1-12-11**

CAROLINA TELEPHONE AND TELEGRAPH COMPANY  
STARBORO, N. C.

SWANSGORO, N. C.

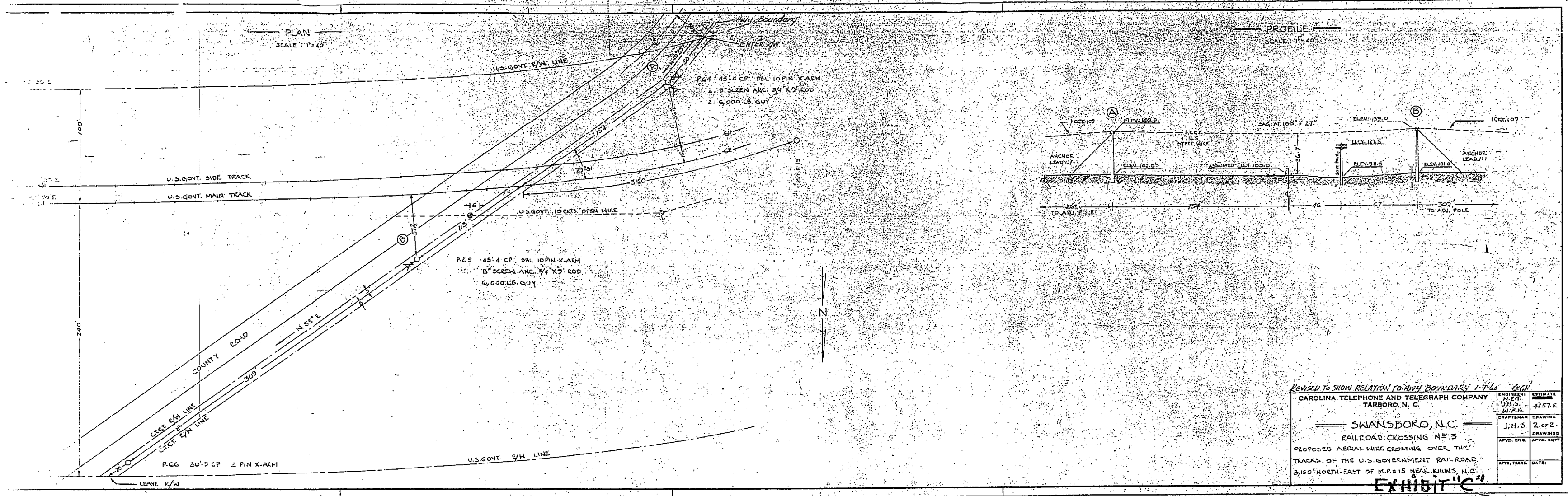
RAILROAD CROSSING NO. 2  
PROPOSED AERIAL WIRE CROSSING OVER THE  
TRACKS OF U.S. GOVT. RAILROAD 1,405 FEET  
EAST OF M.P. 111 NEAR STELLA, N. C.

REVISED	DATE	BY	REMARKS
1	1-1-12	J. H. S.	AS SHOWN
2	1-1-12	J. H. S.	AS SHOWN

C. L. BRIDGEMAN CO. N. Y. STOCK NO. 490

TRIM



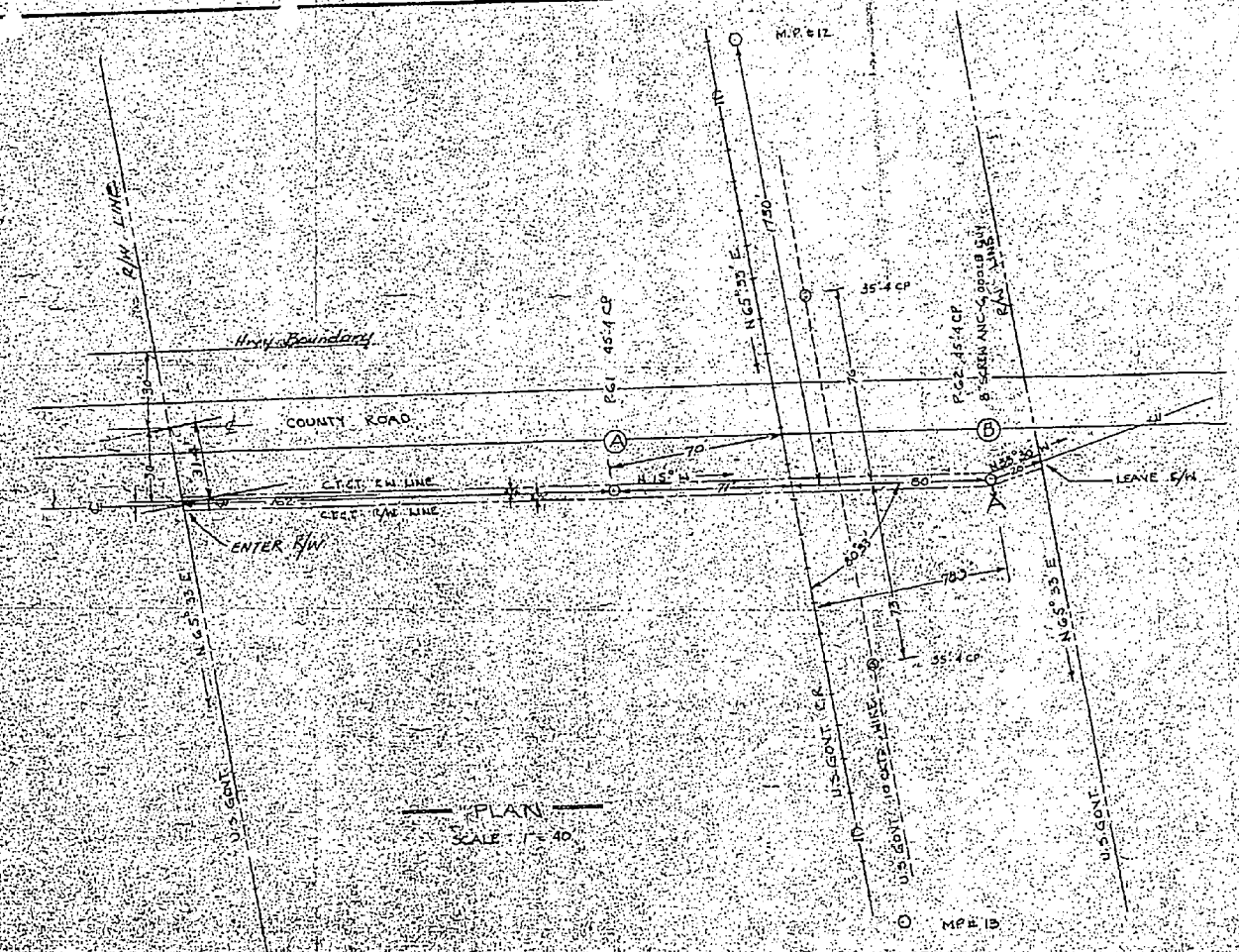


REVISED TO SHOW RELATION TO NEW BOUNDARIES 1-7-46 GCH  
 CAROLINA TELEPHONE AND TELEGRAPH COMPANY  
 TARBORO, N. C.  
 SWANSBORO, N.C.  
 RAILROAD CROSSING NO. 3  
 PROPOSED AERIAL WIRE CROSSING OVER THE  
 TRACKS OF THE U.S. GOVERNMENT RAILROAD  
 3,150' NORTH-EAST OF M.F. 15 NEAR KINGS, N.C.

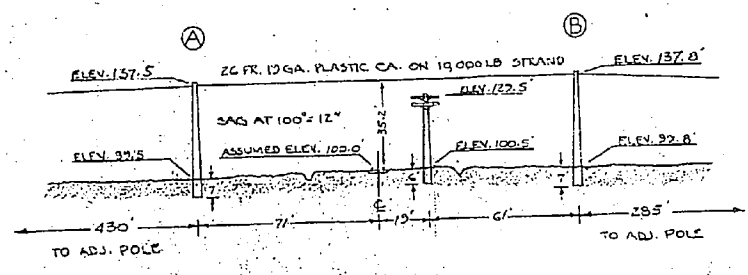
ENGINEER	DESIGNED	APPROVED
J.H.S.	J.H.S.	J.H.S.
DRAWN	DRAWING	DATE
J.H.S.	2 of 2	
APPROVED	DATE	

**EXHIBIT "C"**





PLAN  
SCALE: 1" = 40'



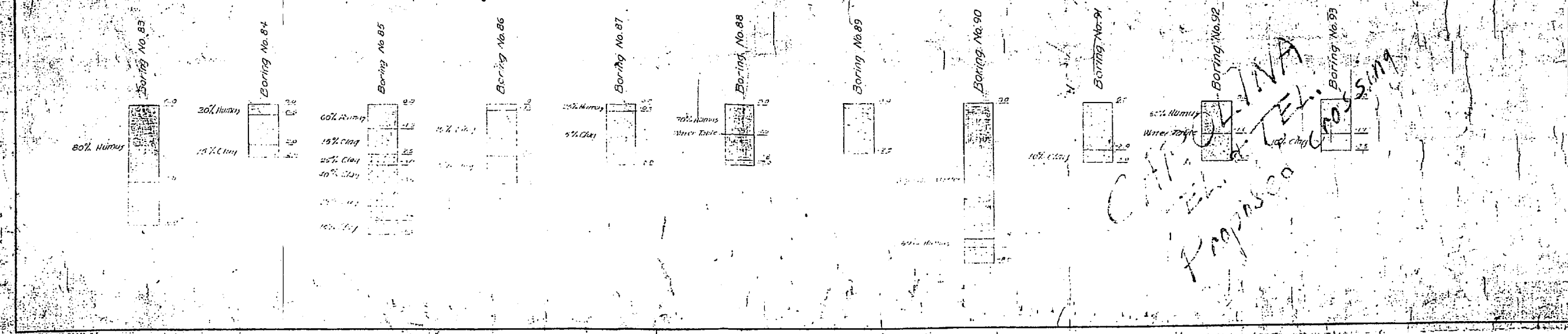
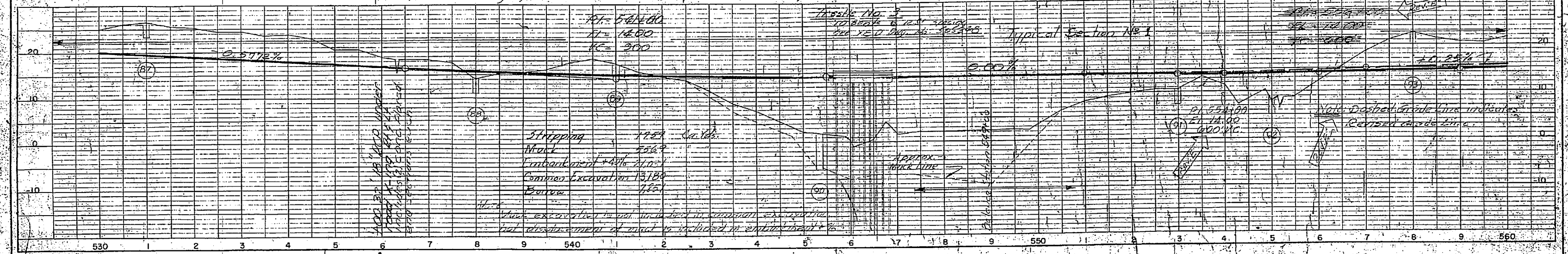
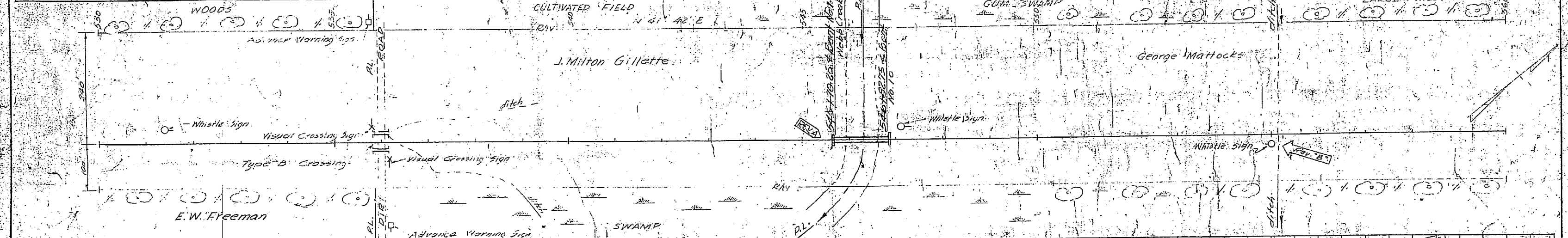
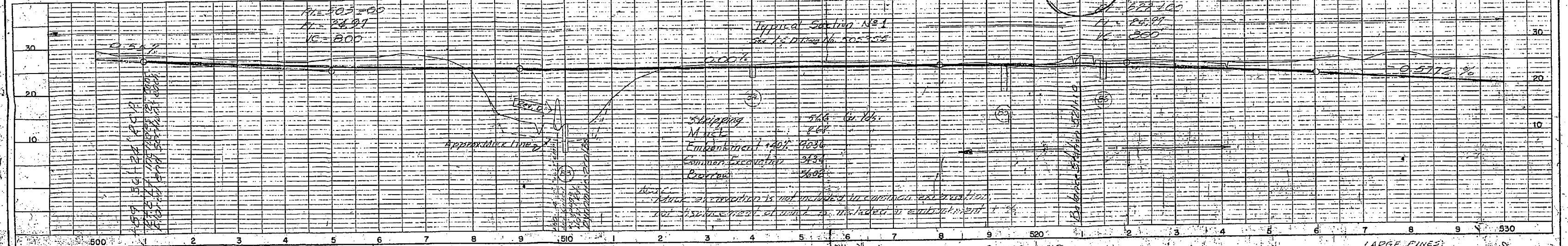
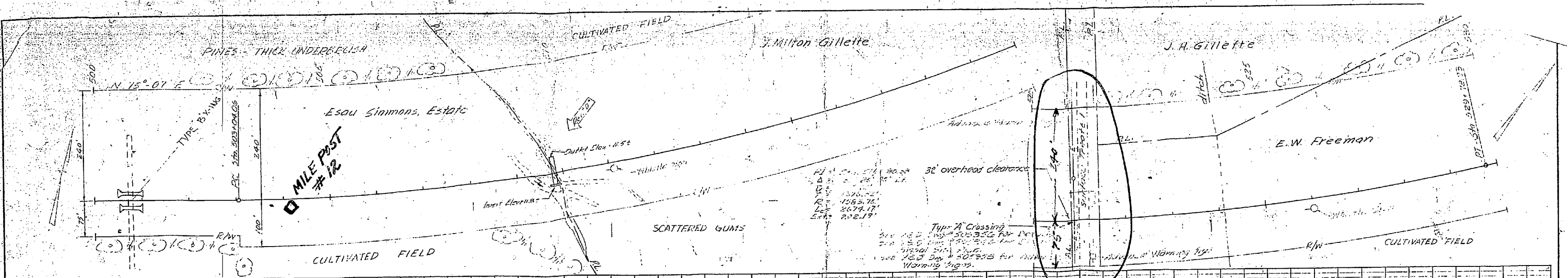
PROFILE  
SCALE: 1" = 40'

REVISED TO SHOW RELATION TO NEW BOUNDARY 11-16-66  
 CAROLINA TELEPHONE AND TELEGRAPH COMPANY  
 TARBORO, N. C.  
 SWANSBORO, N. C.  
 RAILROAD CROSSING NO. 1  
 PROPOSED AERIAL CABLE CROSSING OVER  
 THE TRACK OF U.S. GOVT. RAILROAD 1.730  
 FT. NORTH-EAST OF MILE POST # 12. NEAR  
 SILVERDALE, N. C.

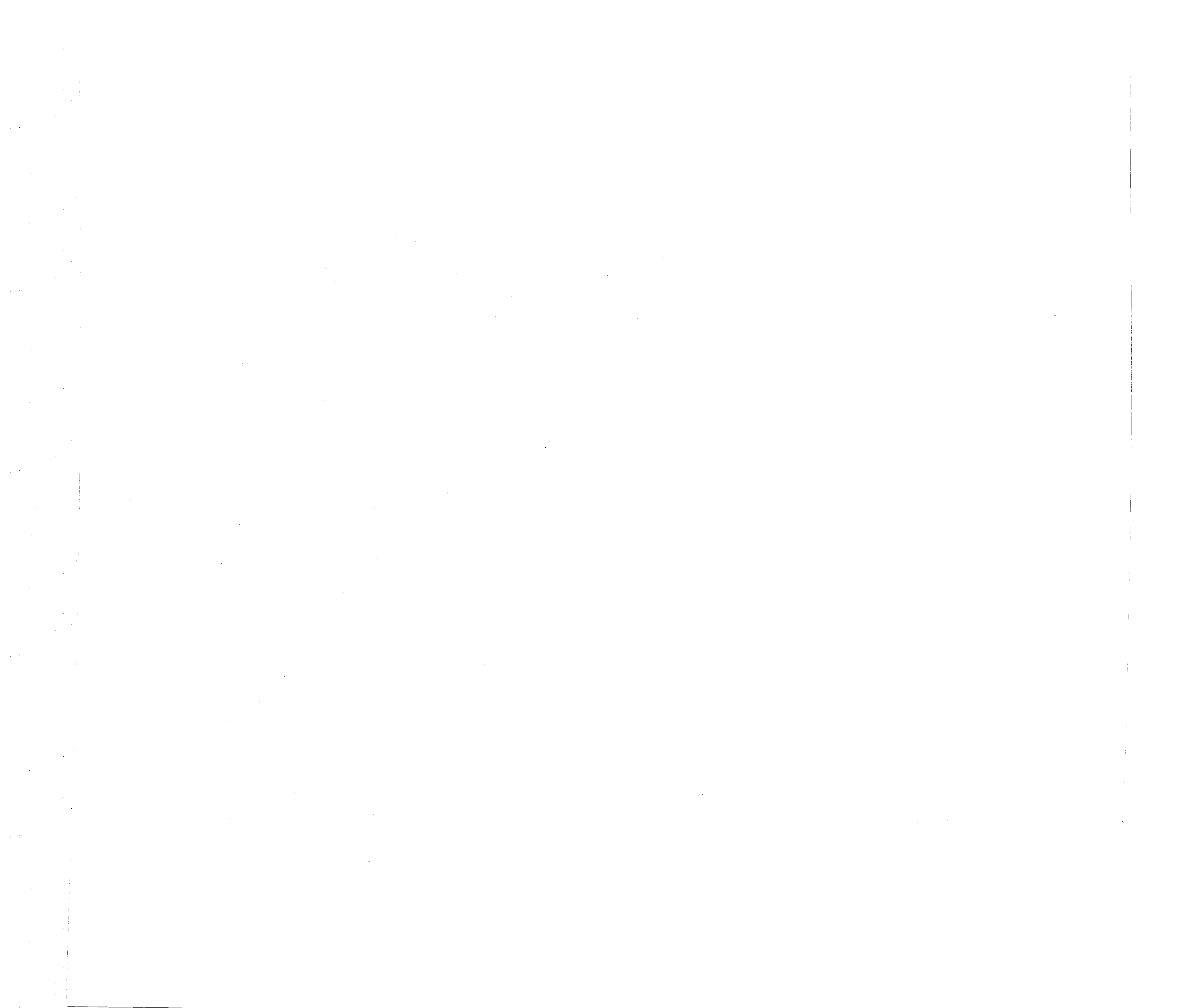
ENGINEER	ESTIMATOR
JMS	4165
DRAWN	
JMS	1 of 1
APPROVED	DRAWING
	NO. 17

**EXHIBIT "A"**

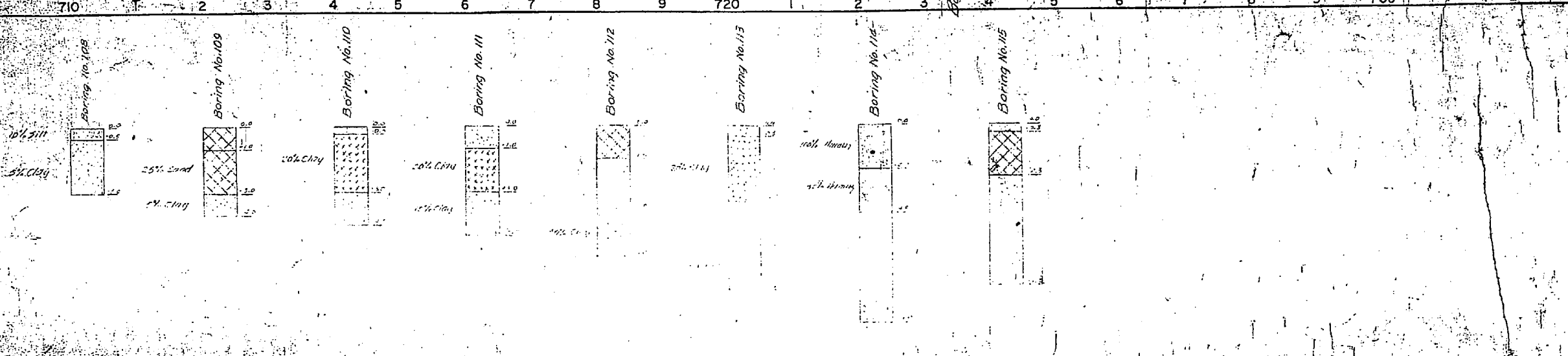
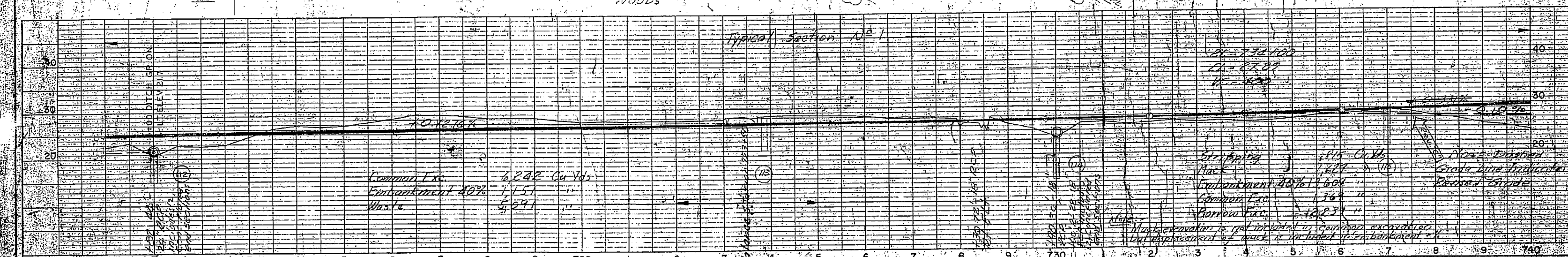
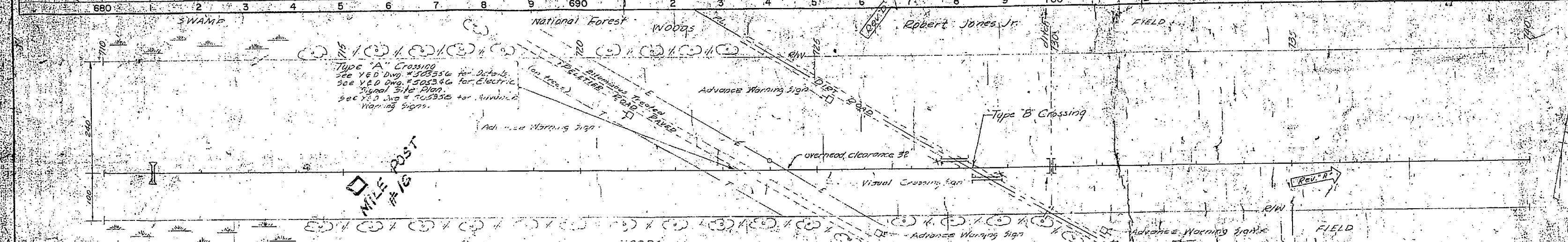
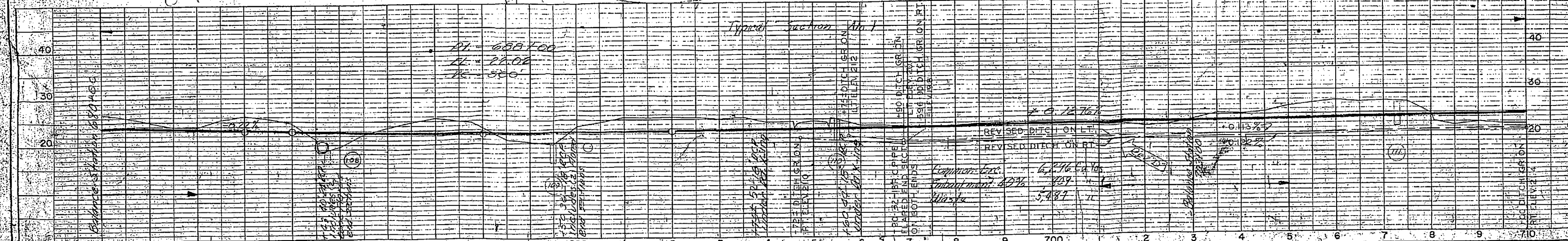
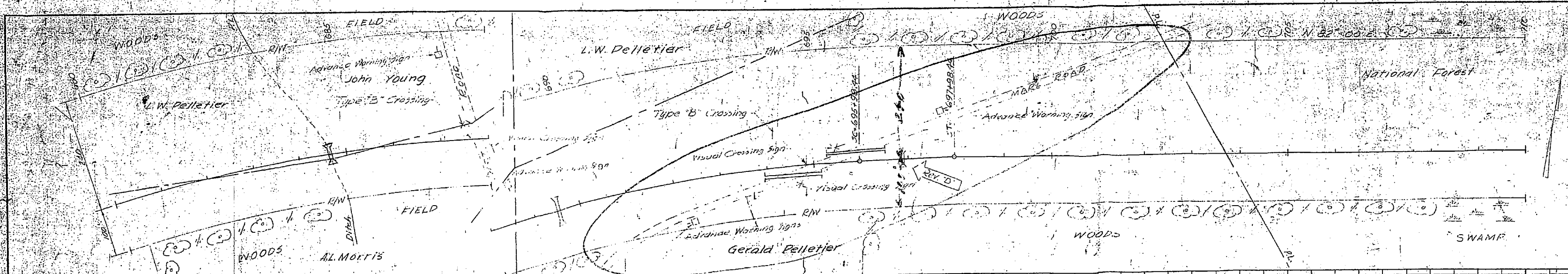




DESIGNED BY	J.E.B. JCE	DATE	3-10-59	AS BUILT	
TRACED BY	J.E.B. JCE	DATE	6-5-53	Revised grade Sta. 551 to Sta. 560	
CHECKED BY	J.E.B. JCE	DATE	10-21-52	Removed Property Lines & Owners	
IN CHARGE	J.E.B. JCE	DATE	5-22-52	Added Property Lines & Owners	
SCALE	1" = 10'	DATE	4-1-52	Added Whistle Sign	
		DATE	3-4-52	Removed test piles	
PUBLIC WORKS DEPARTMENT CAMP LEJEUNE NORTH CAROLINA <b>RAILROAD SPUR</b> (Camp Lejeune-Cherry Point)					
PLAN & PROFILE Sta. 500+00 to Sta. 560+00					
505368					
8368					







REV.	BY	DATE	DESCRIPTION
1	J.E.B.	4-1-52	Added Whistle Sign
2	J.F.B.	4-1-52	Added Property Lines & Owners
3	J.F.B.	5-22-52	Added Property Lines & Owners
4	J.F.B.	6-18-52	Changed Grade Sta. 734 to 736, 740
5	A.E.E.	3-26-53	Revised Ditch Gr. Sta. 694 to 711
6	A.E.E.	3-26-53	Added 18" Pipe Sta. 698+90

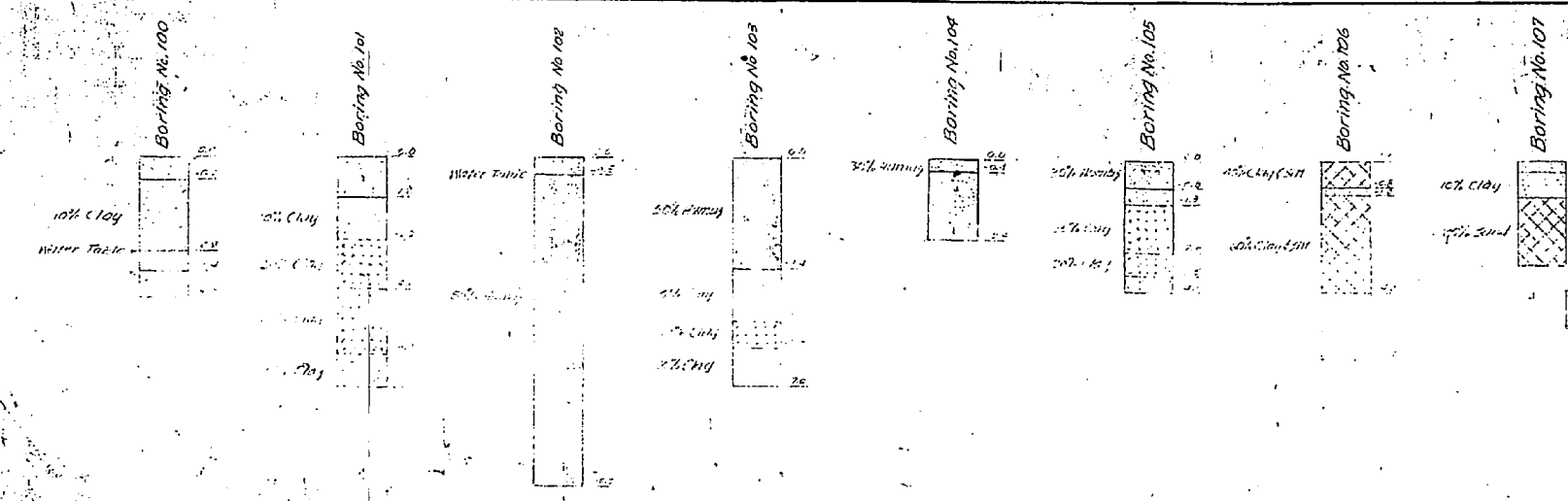
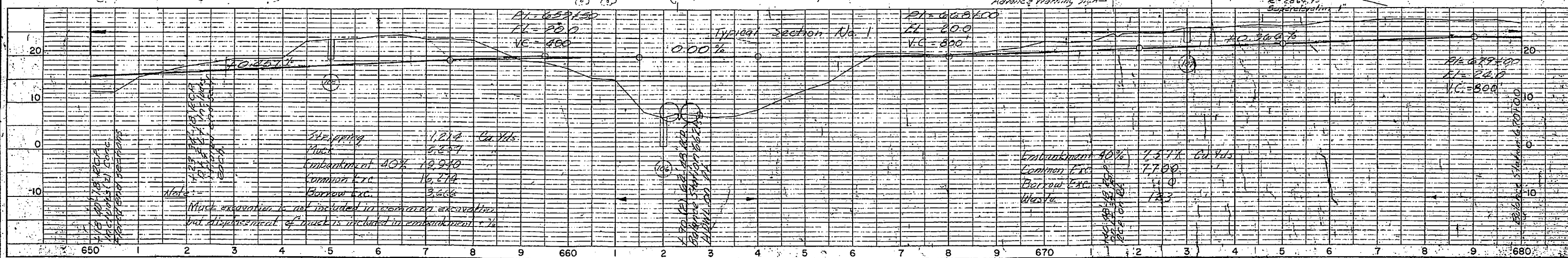
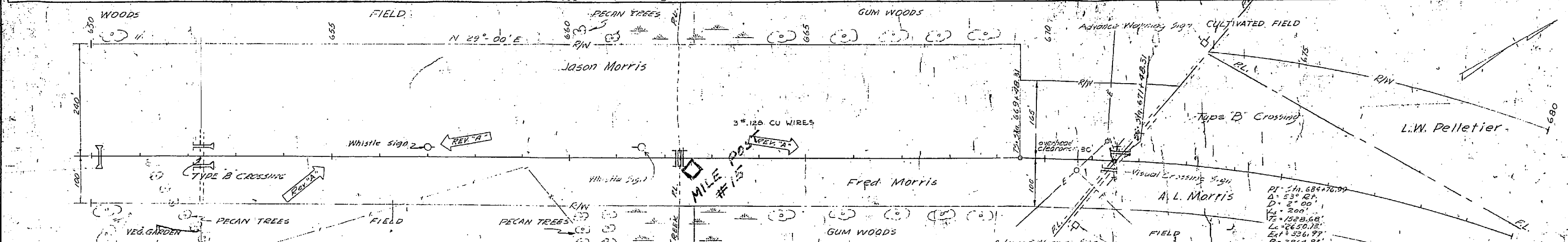
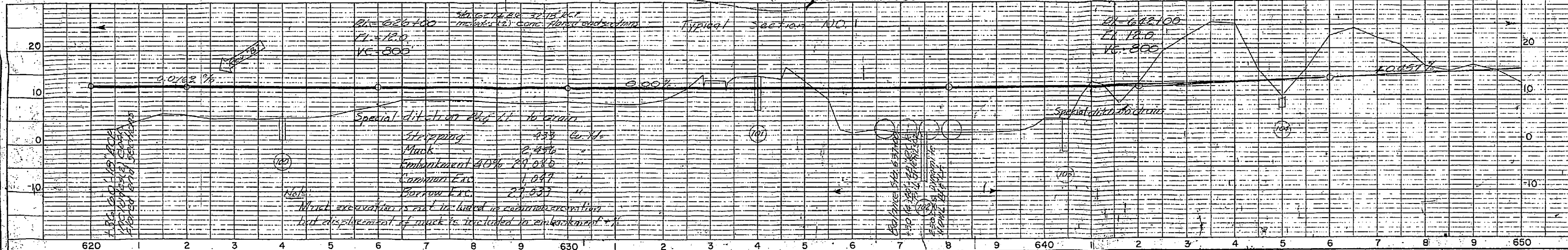
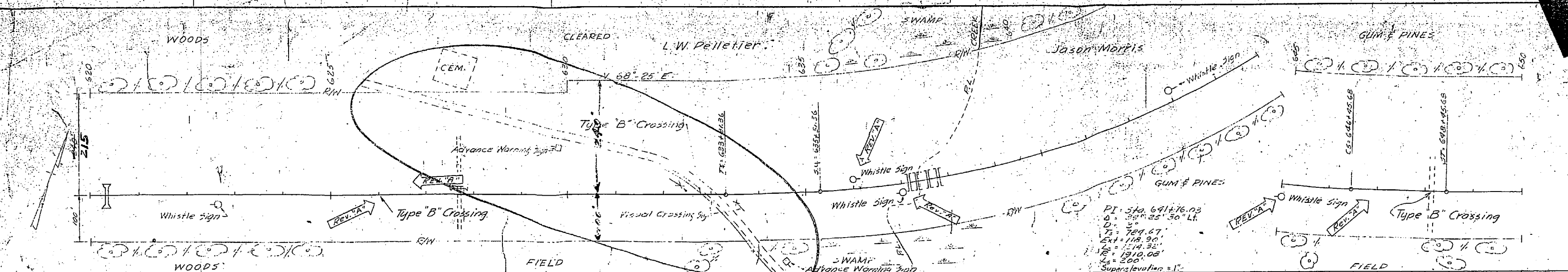
DRAWN BY: J.E.B. / J.C.E.  
 CHECKED BY: S.A. Bondy  
 IN CHARGE: J.P. Bondy  
 SCALE: As Shown  
 V. & D. DRAWING NO. 505371

PUBLIC WORKS DEPARTMENT  
 CAMP LEJEUNE - NORTH CAROLINA  
**RAILROAD SPUR**  
 (Camp Lejeune - Cherry Point)

**PLAN & PROFILE**  
 Sta. 680+00 to Sta. 740+00

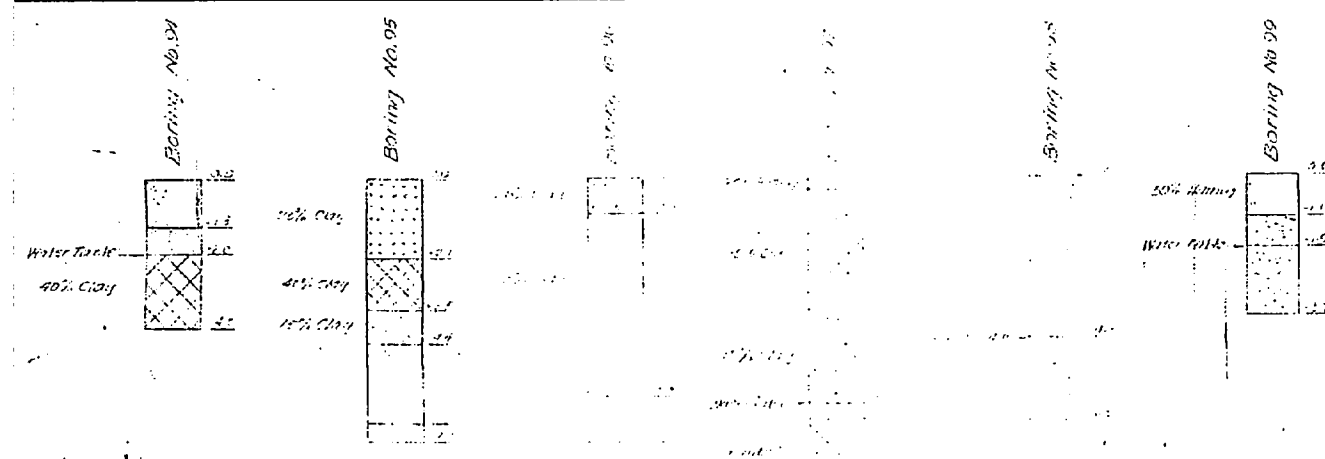
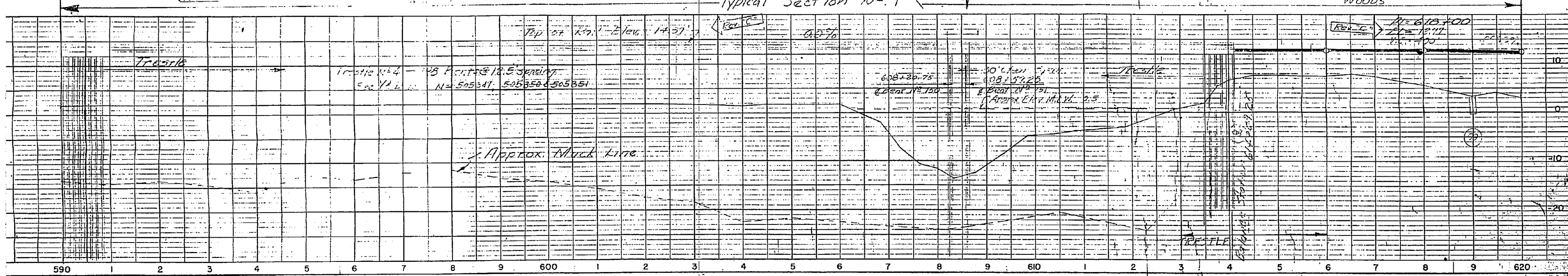
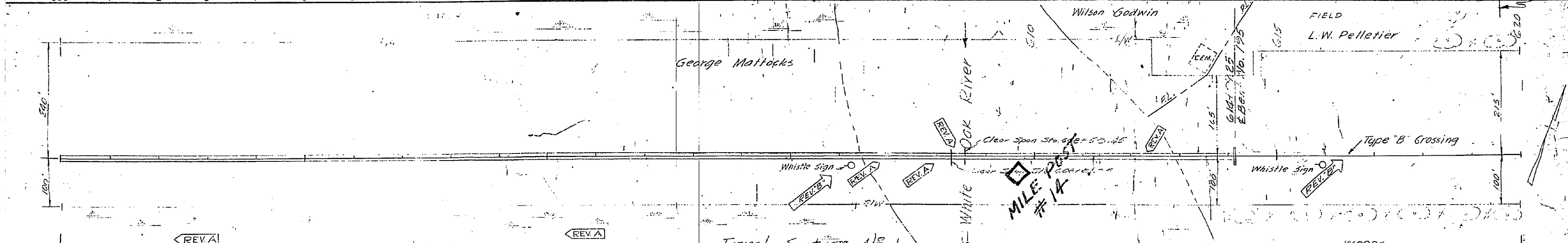
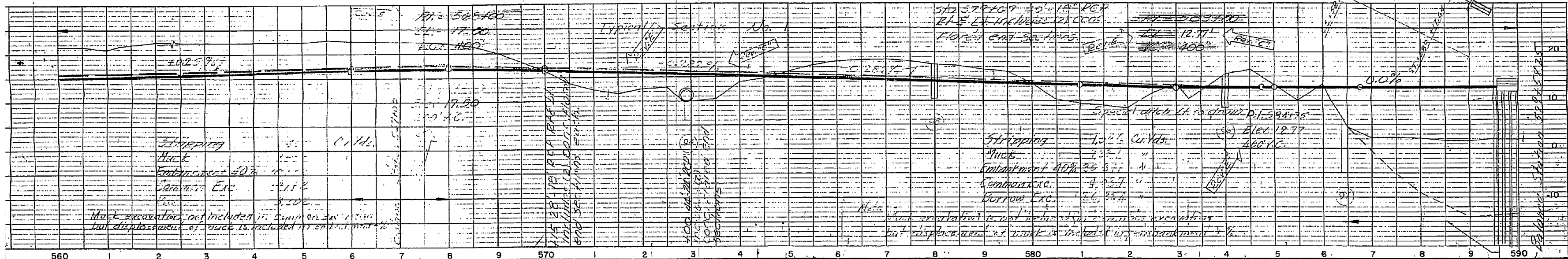
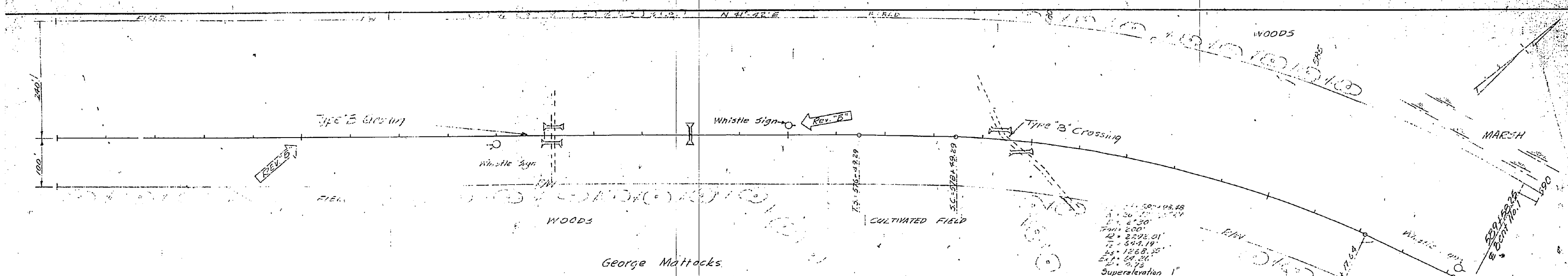
505371  
 8371





ID	JCB	4-14-54	AS BUILT	
C	JFB	2-22-52	Changed 1/4 mile added from Lines & Plan	
B1	JFB	4-2-52	Changed Grade Sta. 620+00 to 621+00	
A	JFB	4-1-52	Added: Grade Crossings & Whistle Signs	
REV.	BY	DATE	BRIEF	
PUBLIC WORKS DEPARTMENT CAMP LEJEUNE — NORTH CAROLINA <b>RAILROAD SPUR</b> (Camp Lejeune - Cherry Point)				
PLAN & PROFILE Sta. 620+00 to Sta. 680+00				
DRAWN BY: JCB CHECKED BY: JFB IN CHARGE: JFB SCALE: AS SHOWN				
V.P. DRAWING NO. <b>505370</b> P.W. DRAWING NO. <b>8370</b>				





REV.	BY	DATE	BRIEF
A	J.C.E.	4-12-50	As BUILT
E	A.E.E.	6-5-53	Revised Grade Sta. 560 to 570.560+75
D	J.F.B.	5-22-52	Added Property Lines & Owners
C	J.F.B.	4-2-52	Changed Grades & Trestle Elev.
B	J.F.B.	4-1-52	Added Grade Crossing & Whistle Signs
A	J.M.S.	3-4-51	Removed test piles

DRAWN BY: J.C.E. CHECKED BY: A.E.E. CHIEF ENGINEER: J.F.B. IN CHARGE: J.F.B. SCALE: 1"=100' H.V.	PUBLIC WORKS DEPARTMENT CAMP LEJEUNE NORTH CAROLINA <b>RAILROAD SPUR</b> (Camp Lejeune - Cherry Point)
T. & D. DRAWING NO. <b>505369</b> P. W. DRAWING NO. <b>8369</b>	PLAN & PROFILE Sta. 560+00 to Sta. 620+00 APPROVED: <i>Stephen P. ...</i> PUBLIC WORKS OFFICE
SHEET 27 OF 46	PROJECT NO. 32219 COMPLETION NO. NOY 70683

