

FILE FOLDER

DESCRIPTION ON TAB:

Rifle Range

Water Plant BLDG. 85

Outside/inside of actual folder did not contain hand written information

Outside/inside of actual folder did contain hand written information

***Scanned as next image**

RR

FILE FOLDER

DESCRIPTION ON TAB:

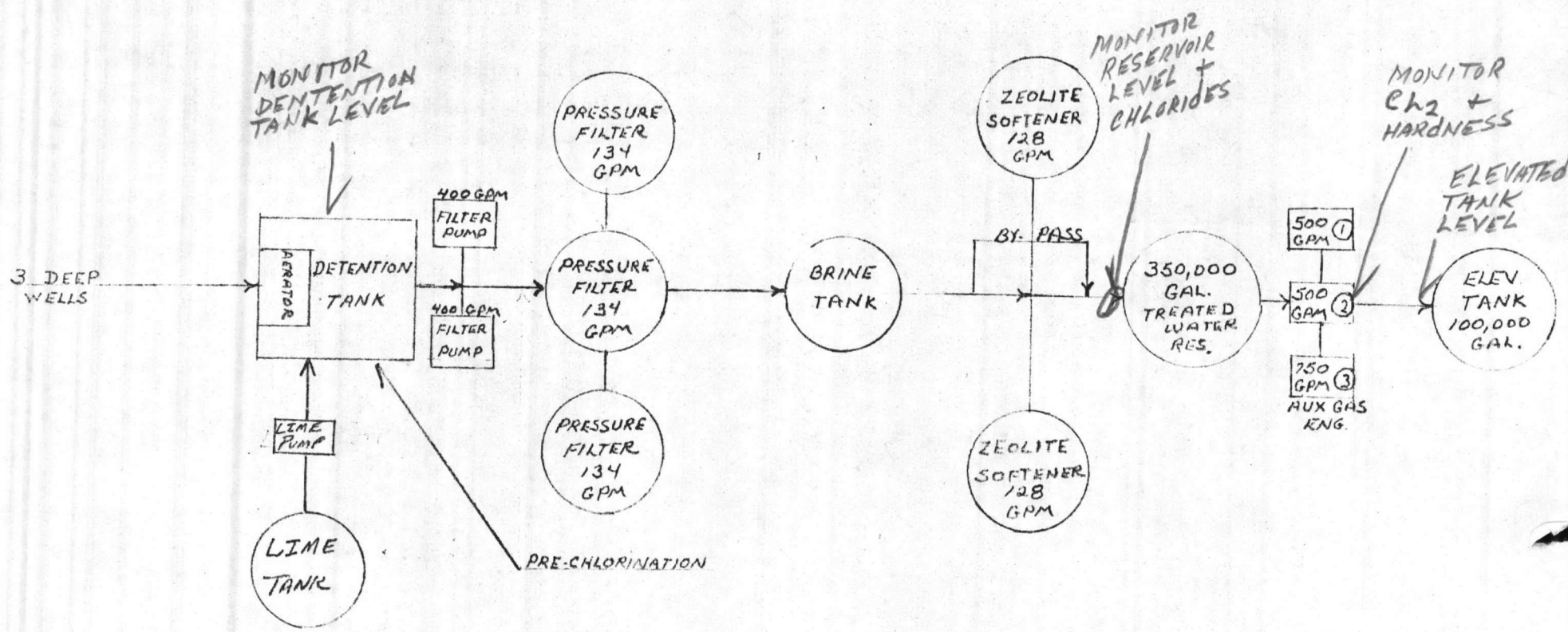
Rifle Range RR-85

Water Plant

- Outside/inside of actual folder did not contain hand written information**
- Outside/inside of actual folder did contain hand written information**
***Scanned as next image**

6

RIFLE RANGE BLDG. RR-85
CAPACITY 600,000 GPD
WITH 3 DEEP WELLS
ZEOLITE SOFTENING PLANT



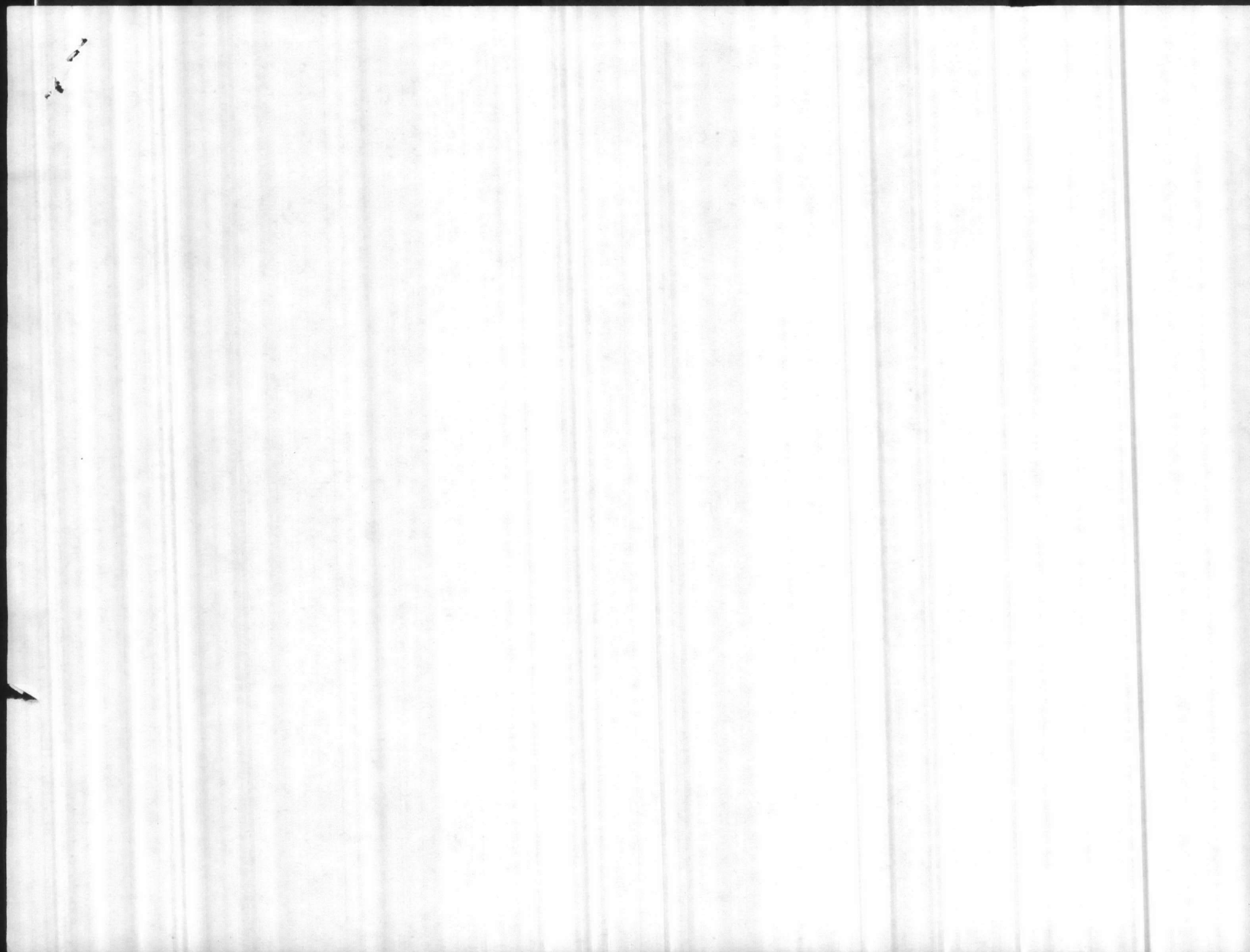


Table III C 3

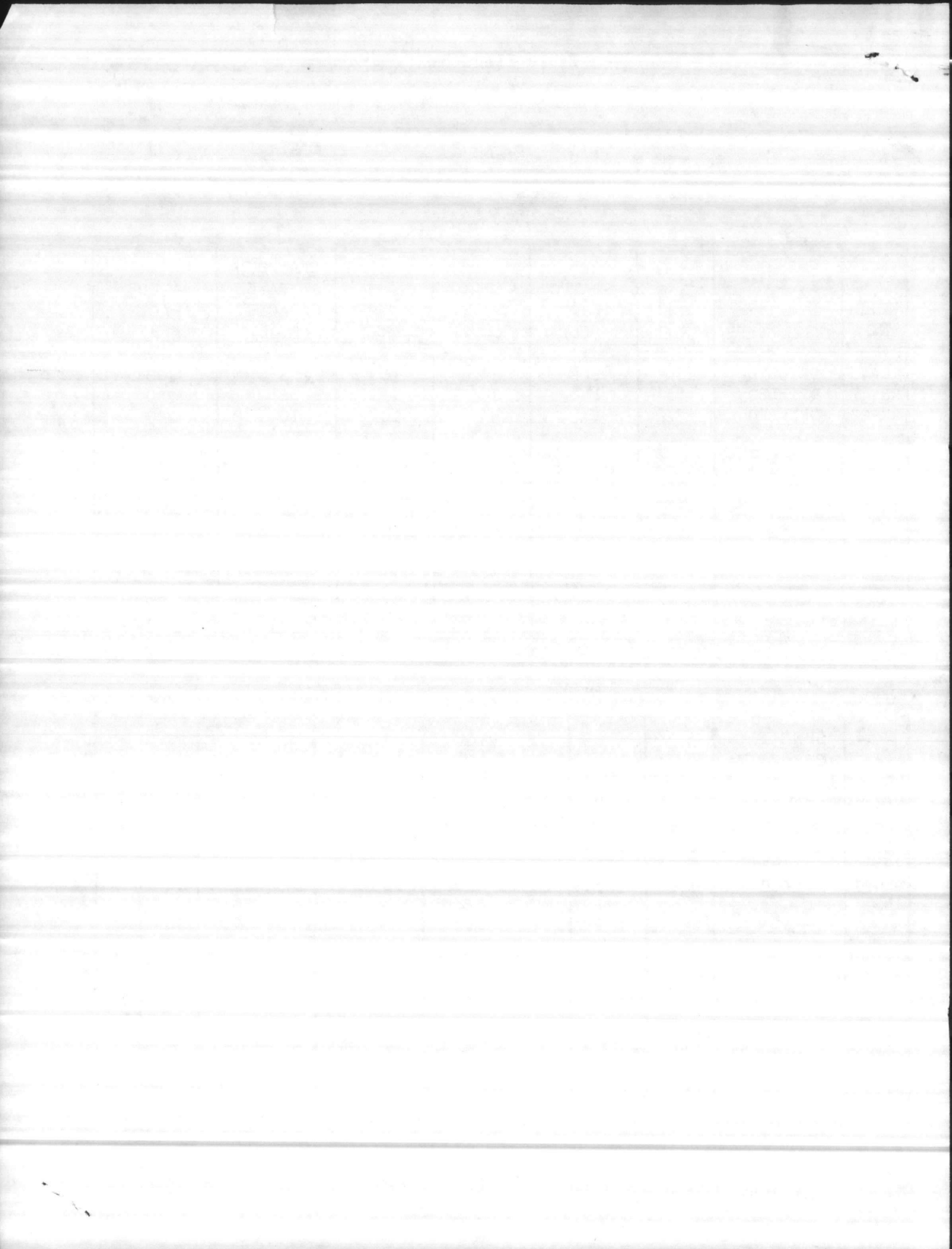
WELL SURVEY SHEET*

Sheet No. 9

DATE: 3-3-77

WELL NO.	WELL TYPE	DRILLED DEPTH ft.	STATIC LEVEL (ft)	CASING SIZE (in.)	STAGES	DRAWDOWN AT RATED CAPACITY (feet)	RATED CAPACITY (gpm)	PRESENT CAPACITY (GPM)
RR-45	DRILLED	130'	27'	8"	10	8'	140	100
RR-47	DRILLED	85'	11'	8"	7	6'	250	175
RR-227	DRILLED	77'	13'	8"	10	10'	200	50

WELL NO.	SPECIFIC CAPACITY (gpm/ft of drawdown)	PUMP HEAD (ft)	MOTOR H. P.	CHLORINATION (AMOUNT)	RESIDUAL CHLORINE (ppm)	AUXILIARY POWER (type)	DD FORM	
							710	686
RR-45	17.5	205'	15.0			GASOLINE		
RR-47	41.7	190'	20.0					
RR-227	20.0	190'	10.0			GASOLINE		



Rifle Range Water

DIETZGEN CORPORATION
MADE IN U.S.A.

NO. 340-T6 DIETZGEN GRAPH PAPER
ONE MONTH BY DAYS

300,000

280,000

260,000

240,000

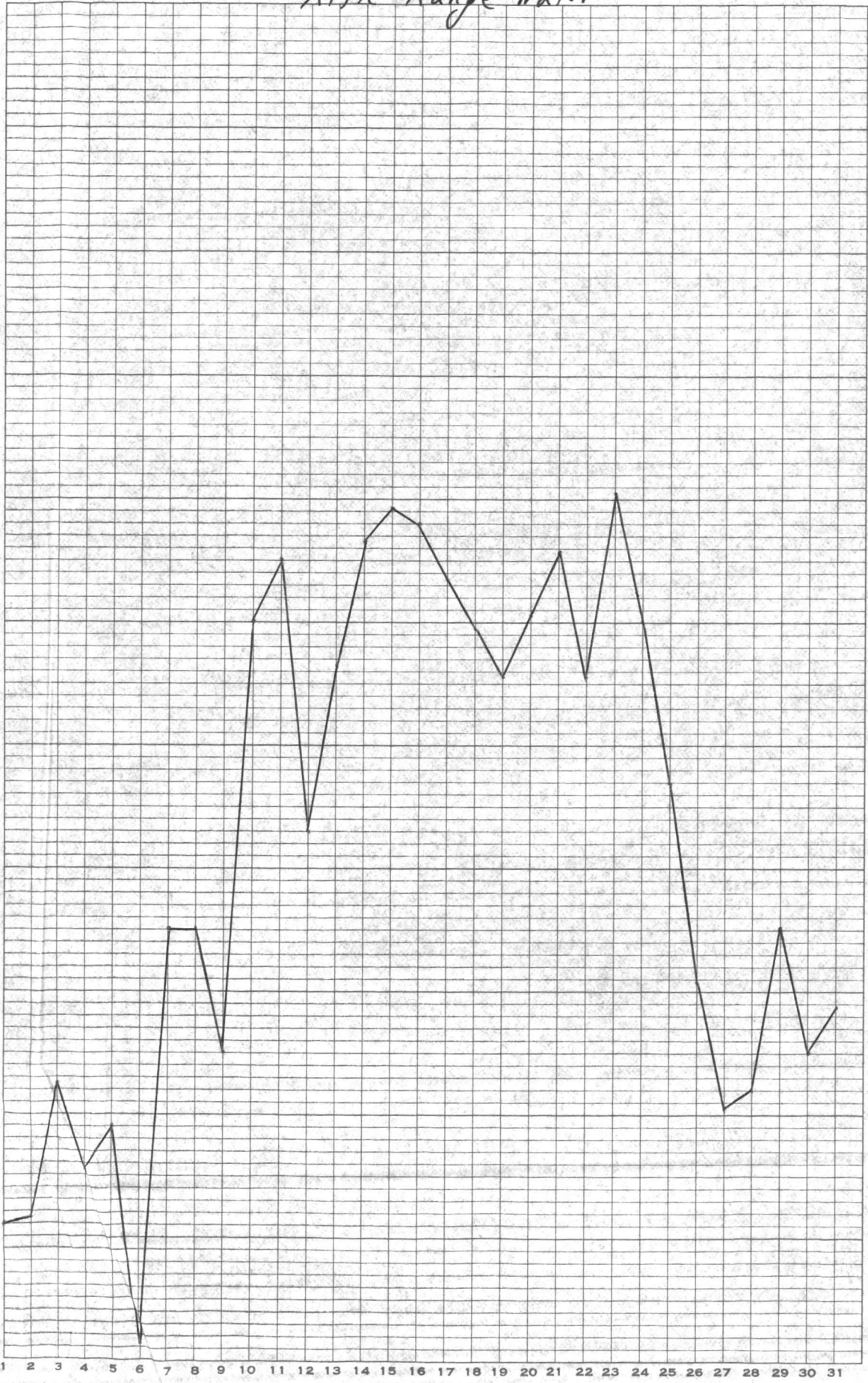
220,000

200,000

180,000

160,000

140,000



MONTH January 1929



01 02 03 04 05 06 07 08 09 10 11 12 13 14 15 16 17 18 19 20 21 22 23 24 25 26 27 28 29 30

100%

100%

100%

Refinite WATER CONDITIONING COMPANY

P.O. BOX 11676, PADDOCK PARKWAY, ROCK HILL, S.C. 29730, PHONE (803) 324-7600

December 23, 1986
JS-63

Mr. Gary Horne
Department Of The Navy
Officer In Charge Of Construction
Resident Officer In Charge Of Construction
Naval Facilities Engineering Command Contracts
Camp Lejeune, N.C. 28542

SUBJECT: REFINITE WATER TREATMENT RR85

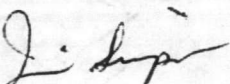
Dear Mr. Horne:

Please find enclosed "As Built" information on the above referenced job compiled after our last trip to Camp Lejeune on December 15th and 16th, 1986. This information includes:

1. Logic for the GE Series One Programmable Controller in the control panel.
2. Refinite wiring diagram on drawings RF10-26 through RF10-31.
3. Operational sequence of filters and softeners along with instructions concerning actions that should be taken in case of a power failure.
4. Refinite drawings RF910-1F and RF910-5 showing the external views of the filters and softeners.

We are also forwarding a recommended spare parts list for the control panel and multiport valves.

Sincerely:


Jim Simpson
Order Processing Supervisor

JS/th

Enclosures



WORLD
WIDE

DIV. OF PPEC INC.

RR-85

MACK, I AM LEAVING
THIS NIGHTMARE FOR
YOU, MAYBE THAT YOU CAN
THINK OF SOMETHING TO
DO WITH IT WRP

FILTER OPERATION

I. MANUAL

A. TURN ALL FILTER SWITCHES TO "H" POSITION.

B. FILTER 1

1. PRESS MANUAL START PUSHBUTTON.
2. INFLUENT VALVE CLOSES.
3. MULTIPORT RELIEF SOLENOID VALVES OPEN.
4. MULTIPORT VALVE ROTATES TO BACKWASH POSITION.
5. MULTIPORT RELIEF SOLENOID VALVES CLOSE.
6. BACKWASH VALVE AND SURFACE WASH VALVE OPEN.
7. SURFACE WASH VALVE CLOSES AFTER 5 MINUTES.
8. BACKWASH VALVE CLOSES AFTER 8 MINUTES.
9. MULTIPORT RELIEF SOLENOID VALVES OPEN.
10. MULTIPORT VALVE ROTATES TO RINSE POSITION.
11. MULTIPORT RELIEF SOLENOID VALVES CLOSE.
12. INFLUENT VALVE OPENS.
13. INFLUENT VALVE CLOSES AFTER 5 MINUTES.
14. MULTIPORT RELIEF SOLENOID VALVES OPEN.
15. MULTIPORT VALVE ROTATES TO SERVICE POSITION.
16. MULTIPORT RELIEF SOLENOID VALVES CLOSE.
17. INFLUENT VALVE OPENS.

AS BUILT CONDITIONS

SATISFACTORY TO AROICC:

DATE

SATISFACTORY TO INSPECTOR:

DATE

Ray

June

CWC Inc.
CONTRACTOR

80-1454

12/31/86

C. FILTER 2

1. PRESS MANUAL START PUSHBUTTON.
2. INFLUENT VALVE CLOSES.
3. MULTIPOINT RELIEF SOLENOID VALVES OPEN.
4. MULTIPOINT VALVE ROTATES TO BACKWASH POSITION.
5. MULTIPOINT RELIEF SOLENOID VALVES CLOSE.
6. BACKWASH VALVE AND SURFACE WASH VALVE OPEN.
7. SURFACE WASH VALVE CLOSES AFTER 5 MINUTES.
8. BACKWASH VALVE CLOSES AFTER 8 MINUTES.
9. MULTIPOINT RELIEF SOLENOID VALVES OPEN.
10. MULTIPOINT VALVE ROTATES TO RINSE POSITION.
11. MULTIPOINT RELIEF SOLENOID VALVES CLOSE.
12. INFLUENT VALVE OPENS.
13. INFLUENT VALVE CLOSES AFTER 5 MINUTES.
14. MULTIPOINT RELIEF SOLENOID VALVES OPEN.
15. MULTIPOINT VALVE ROTATES TO SERVICE POSITION.
16. MULTIPOINT RELIEF SOLENOID VALVES CLOSE.
17. INFLUENT VALVE OPENS.

AS BUILT CONDITIONS

SATISFACTORY TO ARO/CC:

DATE

12/31/86

DATE

SATISFACTORY TO INSPECTOR:

Ray Hunt

CWC Inc

CONTRACTOR

81-1454

D. FILTER 3

1. PRESS MANUAL START PUSHBUTTON.
2. INFLUENT VALVE CLOSSES.
3. MULTIPOINT RELIEF SOLENOID VALVES OPEN.
4. MULTIPOINT VALVE ROTATES TO BACKWASH POSITION.
5. MULTIPOINT RELIEF SOLENOID VALVES CLOSE.
6. BACKWASH VALVE AND SURFACE WASH VALVE OPEN.
7. SURFACE WASH VALVE CLOSSES AFTER 5 MINUTES.
8. BACKWASH VALVE CLOSSES AFTER 8 MINUTES.
9. MULTIPOINT RELIEF SOLENOID VALVES OPEN.
10. MULTIPOINT VALVE ROTATES TO RINSE POSITION.
11. MULTIPOINT RELIEF SOLENOID VALVES CLOSE.
12. INFLUENT VALVE OPENS.
13. INFLUENT VALVE CLOSSES AFTER 5 MINUTES.
14. MULTIPOINT RELIEF SOLENOID VALVES OPEN.
15. MULTIPOINT VALVE ROTATES TO SERVICE POSITION.
16. MULTIPOINT RELIEF SOLENOID VALVES CLOSE.
17. INFLUENT VALVE OPENS.

AS BUILT CONDITIONS

SATISFACTORY TO AROICC:

DATE

12/31/86
DATE

SATISFACTORY TO INSPECTOR:

Ray Hunt
CWC

Enc.
CONTRACTOR

81-1454

II. AUTOMATIC

1. TURN ALL FILTER SWITCHES TO "A" POSITION.
2. DIFFERENTIAL PRESSURE CLOSES.
3. FILTER 1 INFLUENT VALVE CLOSES.
4. FILTER 1 MULTIPOINT RELIEF SOLENOID VALVES OPEN.
5. FILTER 1 MULTIPOINT VALVE ROTATES TO BACKWASH POSITION.
6. FILTER 1 MULTIPOINT RELIEF SOLENOID VALVES CLOSE.
7. FILTER 1 BACKWASH VALVE AND SURFACE WASH VALVE OPEN.
8. FILTER 1 SURFACE WASH VALVE CLOSES AFTER 5 MINUTES.
9. FILTER 1 BACKWASH VALVE CLOSES AFTER 8 MINUTES.
10. FILTER 1 MULTIPOINT RELIEF SOLENOID VALVES OPEN.
11. FILTER 1 MULTIPOINT VALVE ROTATES TO RINSE POSITION.
12. FILTER 1 MULTIPOINT RELIEF SOLENOID VALVES CLOSE.
13. FILTER 1 INFLUENT VALVE OPENS.
14. FILTER 1 INFLUENT VALVE CLOSES AFTER 5 MINUTES.
15. FILTER 1 MULTIPOINT RELIEF SOLENOID VALVES OPEN.
16. FILTER 1 MULTIPOINT VALVE ROTATES TO SERVICE POSITION.
17. FILTER 1 MULTIPOINT RELIEF SOLENOID VALVES CLOSE.
18. FILTER 1 INFLUENT VALVE OPENS.
19. FILTER 2 INFLUENT VALVE CLOSES.
20. FILTER 2 MULTIPOINT RELIEF SOLENOID VALVES OPEN.
21. FILTER 2 MULTIPOINT VALVE ROTATES TO BACKWASH POSITION.
22. FILTER 2 MULTIPOINT RELIEF SOLENOID VALVES CLOSE.
23. FILTER 2 BACKWASH VALVE AND SURFACE WASH VALVE OPEN.
24. FILTER 2 SURFACE WASH VALVE CLOSES AFTER 5 MINUTES.
25. FILTER 2 BACKWASH VALVE CLOSES AFTER 8 MINUTES.
26. FILTER 2 MULTIPOINT RELIEF SOLENOID VALVES OPEN.
27. FILTER 2 MULTIPOINT VALVE ROTATES TO RINSE POSITION.
28. FILTER 2 MULTIPOINT RELIEF SOLENOID VALVES CLOSE.
29. FILTER 2 INFLUENT VALVE OPENS.
30. FILTER 2 INFLUENT VALVE CLOSES AFTER 5 MINUTES.

AS BUILT CONDITIONS

SATISFACTORY TO AROICC:

DATE

12/31/86

DATE

SATISFACTORY TO INSPECTOR:

Ray Hunter

CWC Inc
CONTRACTOR

81-1454

31. FILTER 2 MULTIPOINT RELIEF SOLENOID VALVES OPEN.
32. FILTER 2 MULTIPOINT VALVE ROTATES TO SERVICE POSITION.
33. FILTER 2 MULTIPOINT RELIEF SOLENOID VALVES CLOSE.
34. FILTER 2 INFLUENT VALVE OPENS.
35. FILTER 3 INFLUENT VALVE CLOSES.
36. FILTER 3 MULTIPOINT RELIEF SOLENOID VALVES OPEN.
37. FILTER 3 MULTIPOINT VALVE ROTATES TO BACKWASH POSITION.
38. FILTER 3 MULTIPOINT RELIEF SOLENOID VALVES CLOSE.
39. FILTER 3 BACKWASH VALVE AND SURFACE WASH VALVE OPEN.
40. FILTER 3 SURFACE WASH VALVE CLOSES AFTER 5 MINUTES.
41. FILTER 3 BACKWASH VALVE CLOSES AFTER 8 MINUTES.
42. FILTER 3 MULTIPOINT RELIEF SOLENOID VALVES OPEN.
43. FILTER 3 MULTIPOINT VALVE ROTATES TO RINSE POSITION.
44. FILTER 3 MULTIPOINT RELIEF SOLENOID VALVES CLOSE.
45. FILTER 3 INFLUENT VALVE OPENS.
46. FILTER 3 INFLUENT VALVE CLOSES AFTER 5 MINUTES.
47. FILTER 3 MULTIPOINT RELIEF SOLENOID VALVES OPEN.
48. FILTER 3 MULTIPOINT VALVE ROTATES TO SERVICE POSITION.
49. FILTER 3 MULTIPOINT RELIEF SOLENOID VALVES CLOSE.
50. FILTER 3 INFLUENT VALVE OPENS.

NOTES:

1. FILTERS WILL NOT BACKWASH IF A SOFTNER IS REGENERATING.
2. IF FILTER PUMPS ARE OFF AT START OF BACKWASH CYCLE, THEY WILL START AUTOMATICALLY AND RUN UNTIL BACKWASH CYCLE IS COMPLETED. FILTER PUMP/S SWITCH MUST BE IN "AUTO" POSITION.

AS BUILT CONDITIONS

SATISFACTORY TO AROICC:

DATE

12/31/86

DATE

SATISFACTORY TO INSPECTOR:

Ray Hunt

C.W.C. Inc
CONTRACTOR

81-1454

SOFTNER OPERATION

1. MANUAL PUSHBUTTON WITH SWITCH IN "H" POSITION OR BADGER METER WITH SWITCH IN "A" POSITION INITIATES REGEN CYCLE
2. BRINE LEVEL MUST BE AT LEVEL SWITCH.
3. INFLUENT VALVE CLOSSES.
4. MULTIPORT RELIEF SOLENOID VALVES OPEN.
5. MULTIPORT VALVE ROTATES TO BACKWASH POSITION.
6. MULTIPORT RELIEF SOLENOID VALVES CLOSE.
7. INFLUENT VALVE OPENS.
8. SOFTNER BACKWASHES FOR 10 MINUTES.
9. INFLUENT VALVE CLOSSES.
10. MULTIPORT RELIEF VALVES OPEN.
11. MULTIPORT VALVE ROTATES TO BRINE/RINSE POSITION.
12. MULTIPORT RELIEF VALVES CLOSE.
13. INJECTOR SOLENOID VALVE AND BRINE SOLENOID VALVE OPEN.
14. BRINE IS INJECTED FOR 16.5 MINUTES AND BRINE SOLENOID VALVE CLOSSES.
15. INJECTOR SOLENOID VALVE REMAINS OPEN FOR 120 MINUTE RINSE CYCLE THEN CLOSSES.
16. MULTIPORT RELIEF VALVES OPEN.
17. MULTIPORT VALVE ROTATES TO SERVICE POSITION.
18. MULTIPORT RELIEF VALVES CLOSE.
19. INFLUENT VALVE OPENS.

NOTES:

1. ONLY ONE (1) SOFTNER WILL REGEN AT A TIME.
2. SOFTNER WILL NOT REGEN IF A FILTER IS IN BACKWASH.
3. IF FILTER PUMPS ARE OFF AT START OF REGEN CYCLE, THEY WILL START AUTOMATICALLY AND RUN UNTIL REGEN CYCLE IS COMPLETED. FILTER PUMP/S SWITCH MUST BE IN "AUTO" POSITION.

AS BUILT CONDITIONS

SATISFACTORY TO AROICC:

DATE

12/31/86

DATE

SATISFACTORY TO INSPECTOR:

Ray Hunt

ewe

ENE
CONTRACTOR

81-1454

FILTER/SOFTNER
POWER FAILURE INSTRUCTIONS

- I. IF FILTERS AND SOFTNERS WERE ALL IN SERVICE AT TIME OF POWER FAILURE, NO ACTION IS REQUIRED.

- II. FILTER IN BACKWASH AT TIME OF POWER FAILURE.
 - A. TURN ALL FILTER SWITCHES TO "O" POSITION.
 - B. MANUALLY REPOSITION MULTIPOINT VALVE OF FILTER THAT WAS IN BACKWASH TO SERVICE POSITION.
 - C. TURN "OFF" MAIN POWER DISCONNECT SWITCH ON CONTROL PANEL AND TURN BACK "ON" TO RESET CONTROLLER.
 - D. TURN ALL FILTER SWITCHES TO "H" POSITION.
 - E. BACKWASH FILTERS INDIVIDUALLY USING MANUAL START PUSHBUTTONS.
 - F. TURN ALL FILTER SWITCHES TO "A" POSITION.

- III. SOFTNER IN REGEN AT TIME OF POWER FAILURE.
 - A. CLOSE RED HANDLED MANUAL EFFLUENT VALVE.
 - B. TURN SOFTNER SWITCH TO "O" POSITION.
 - C. TURN "OFF" FILTER PUMPS.
 - D. MANUALLY REPOSITION MULTIPOINT VALVE TO SERVICE POSITION.
 - E. TURN FILTER PUMP SWITCHES TO "AUTO" POSITION.
 - F. TURN SOFTNER SWITCH TO "H" POSITION.
 - G. REGEN SOFTNER USING MANUAL START PUSHBUTTON.
 - H. OPEN RED HANDLED MANUAL EFFLUENT VALVE AFTER REGEN CYCLE IS COMPLETED.
 - I. TURN SOFTNER SWITCH TO "A" POSITION.

AS BUILT CONDITIONS

SATISFACTORY TO AROICC:

DATE

DATE

12/31/86

SATISFACTORY TO INSPECTOR:

Ray Hunt
CWC Inc

CONTRACTOR

81-1454

AS BUILT CONDITIONS

SATISFACTORY TO AROICC:

DATE

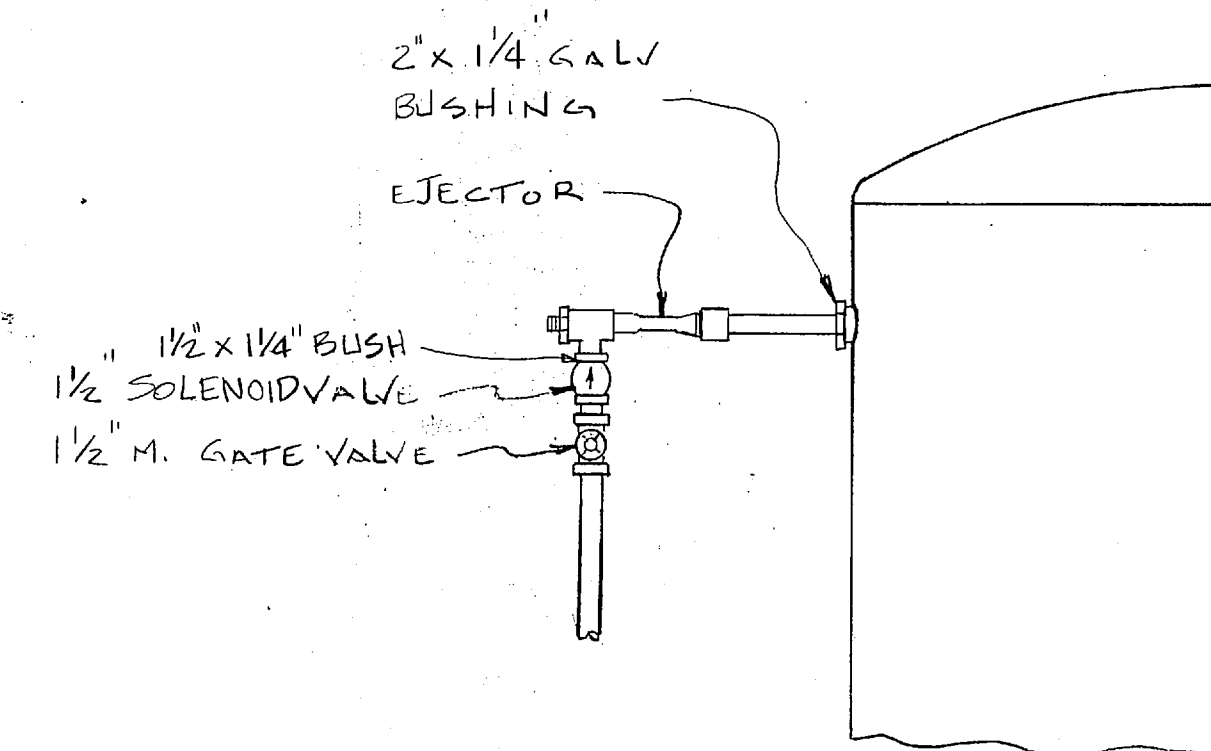
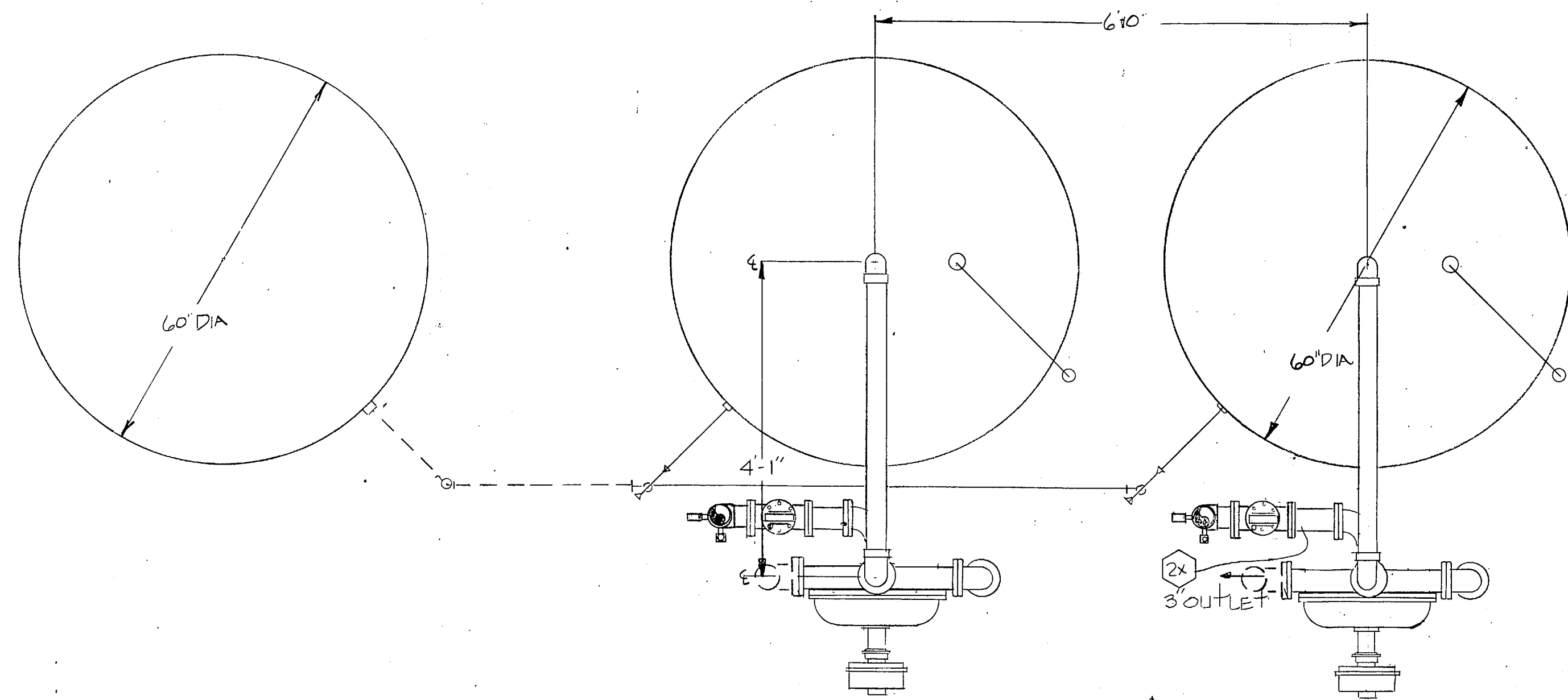
SATISFACTORY TO INSPECTOR:

12/31/86
DATE

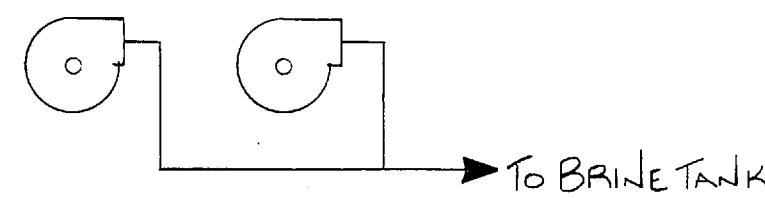
Ray Hunt

CW C Inc
CONTRACTOR

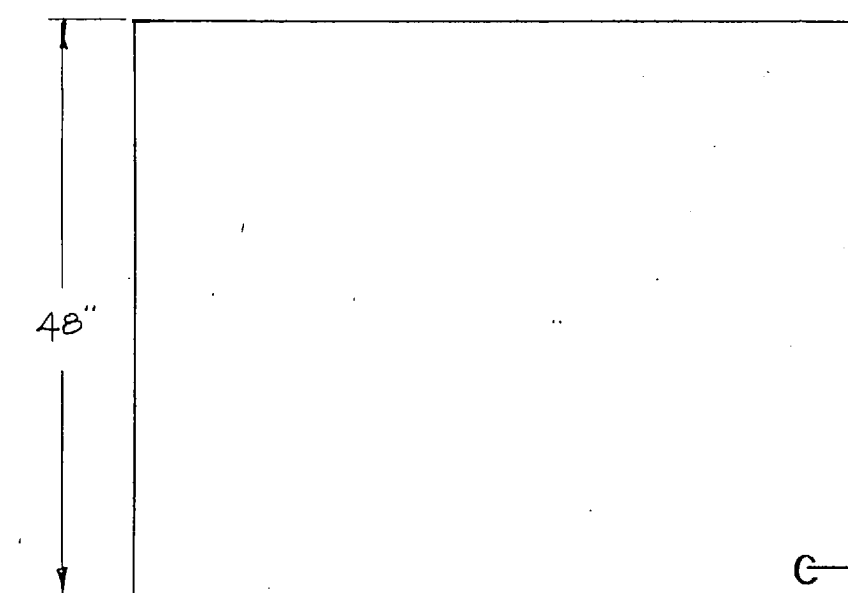
81-1454



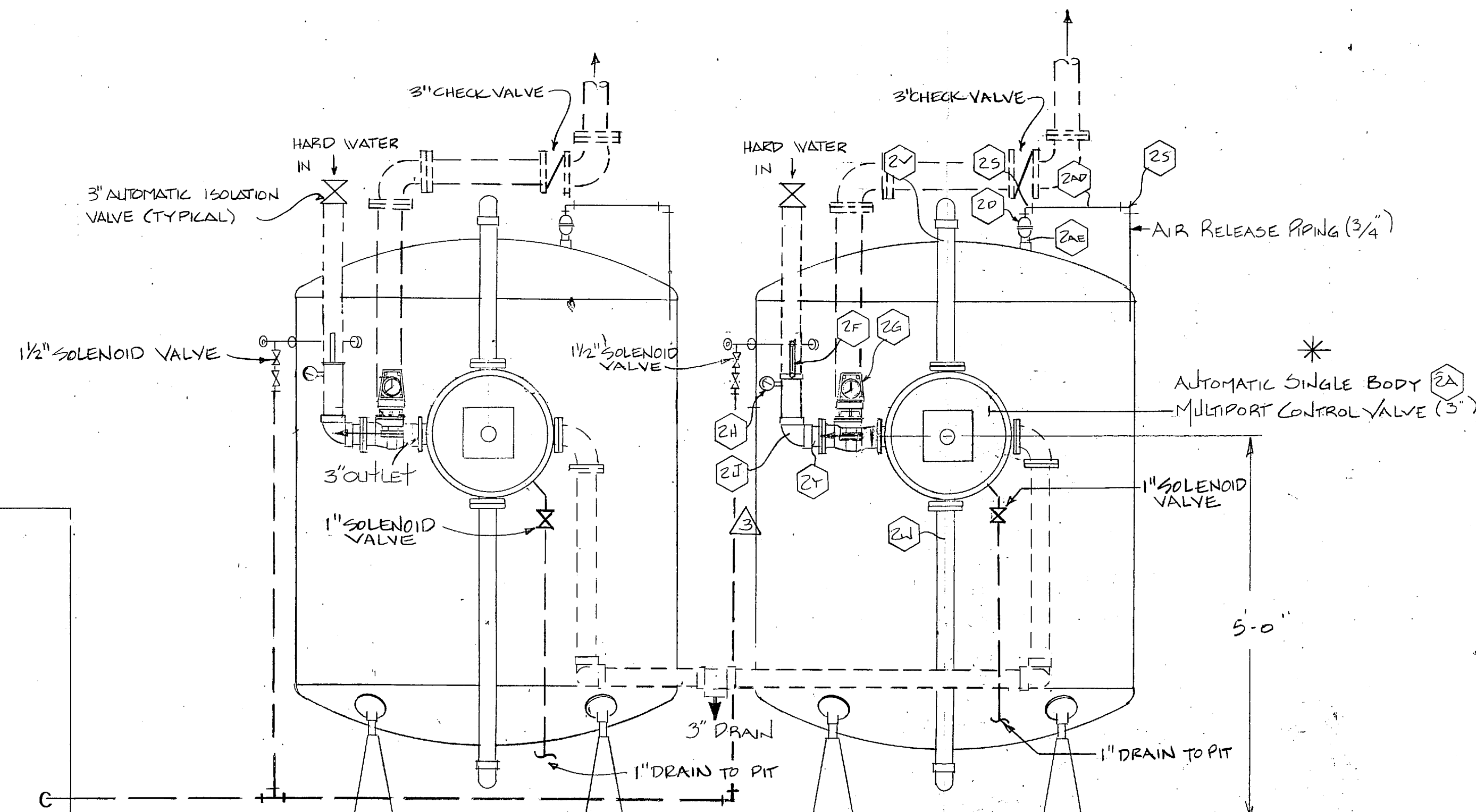
EXISTING ELEC. DISCONNECTS AND STARTERS CONNECT TO NEW PUMPS



NEW BRINE PUMPS: SET ON EXIST. CONG. BASE & CONNECT TO EXIST. PIPING

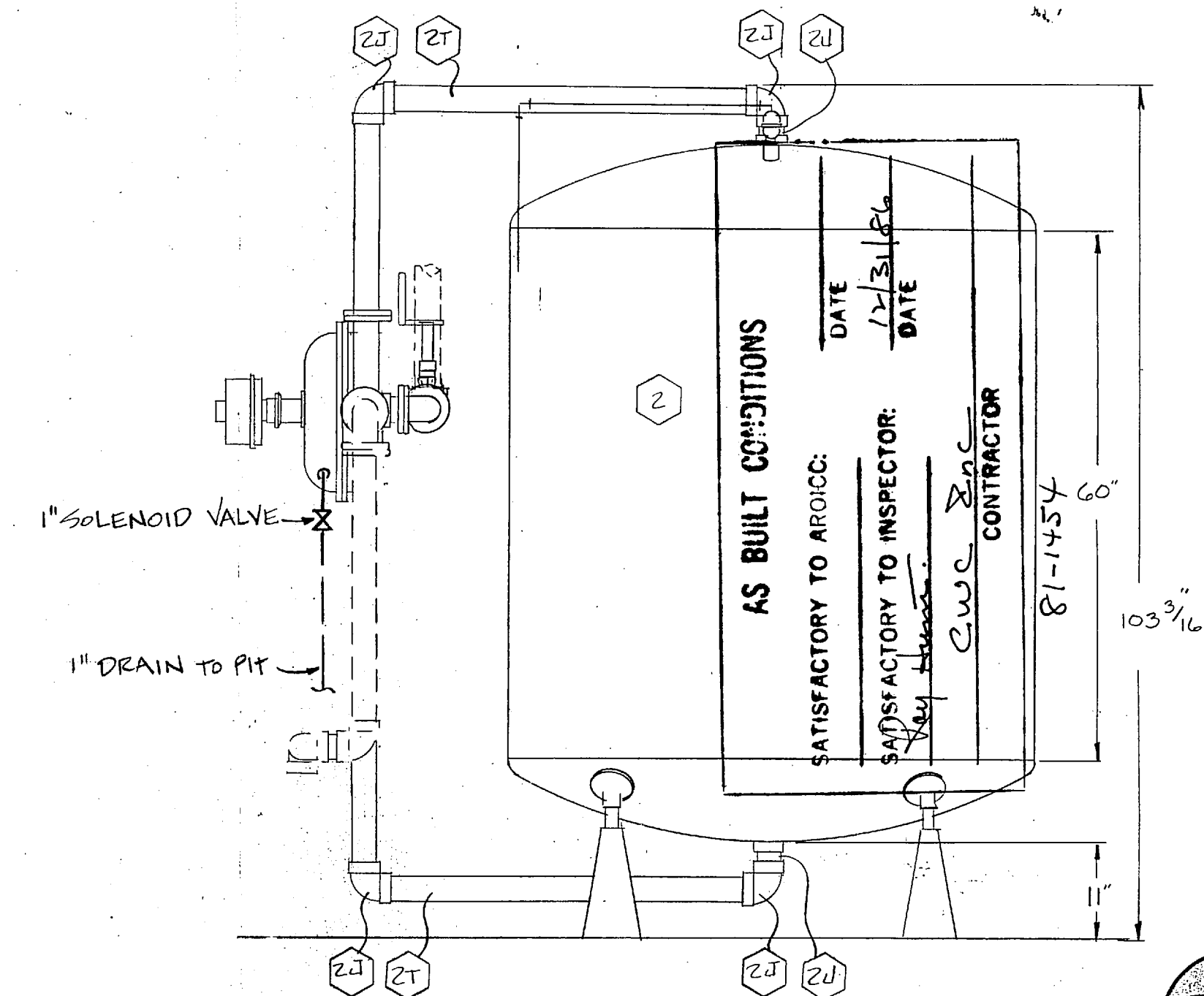


BRINE MEASURING TANK
(SEE RF-910-5)



SOFTENERS

POTTED PIPING NOT BY RUC



Refinite Water Conditioning Co.

ROCK HILL, SOUTH CAROLINA 29730

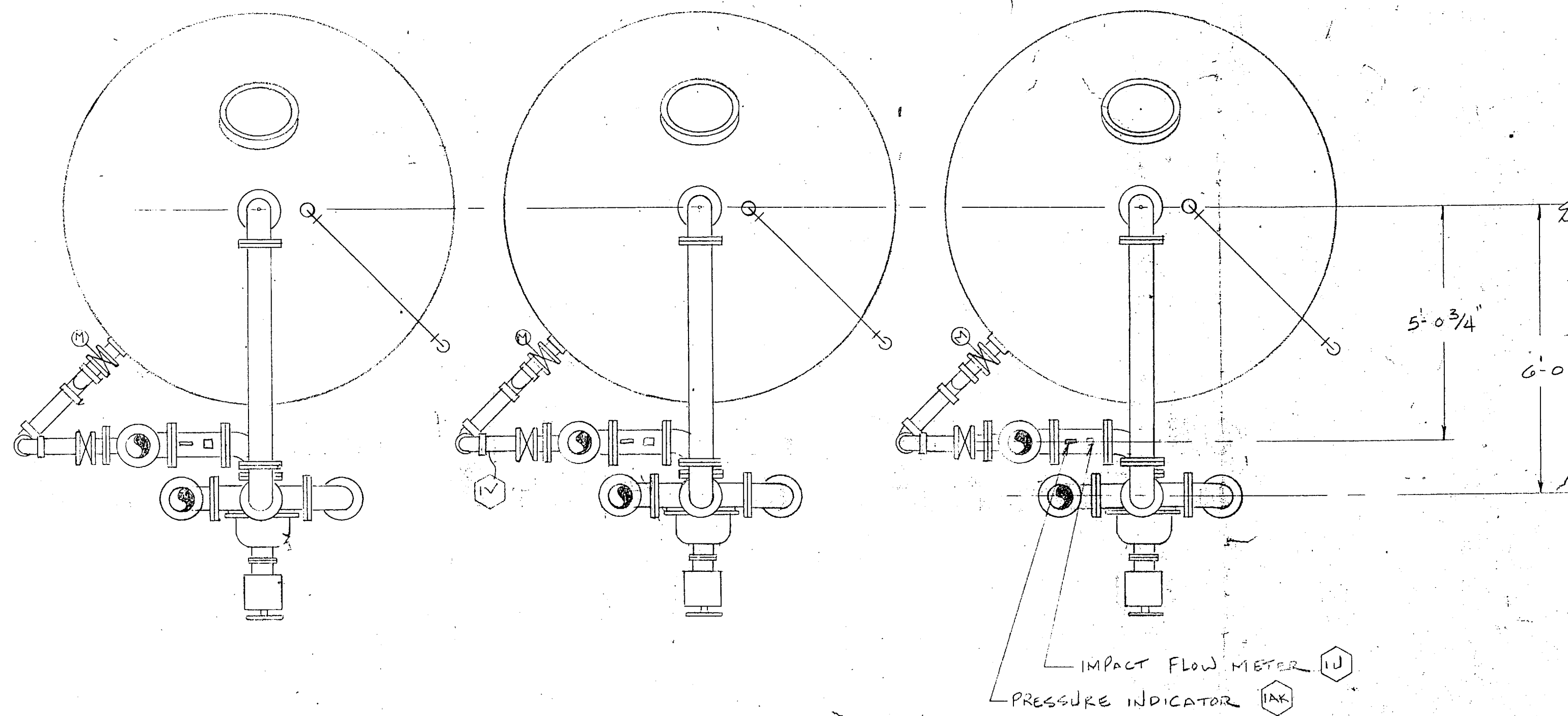
SCALE 3/4"=1'-0"

JOB #578 WORLD WIDE

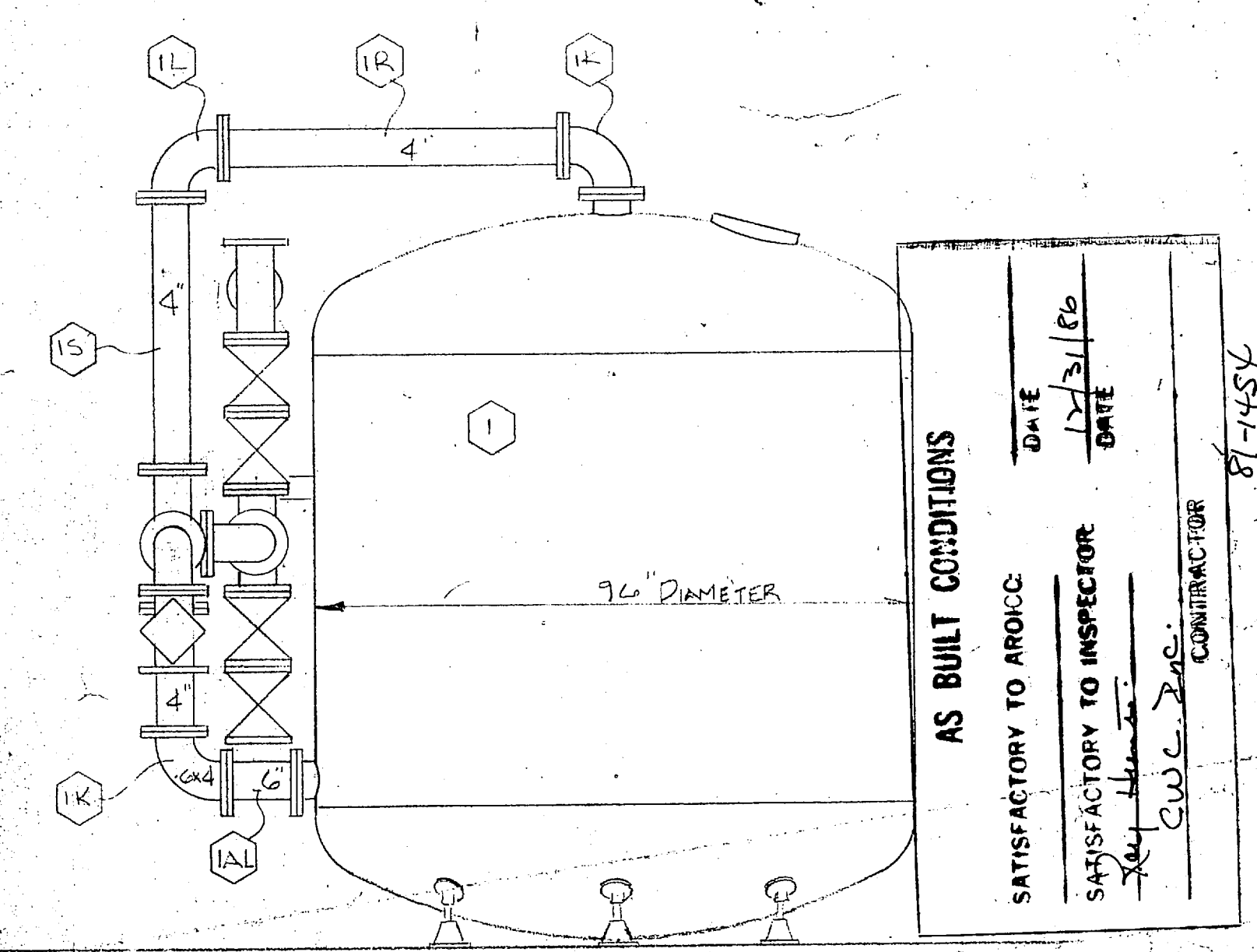
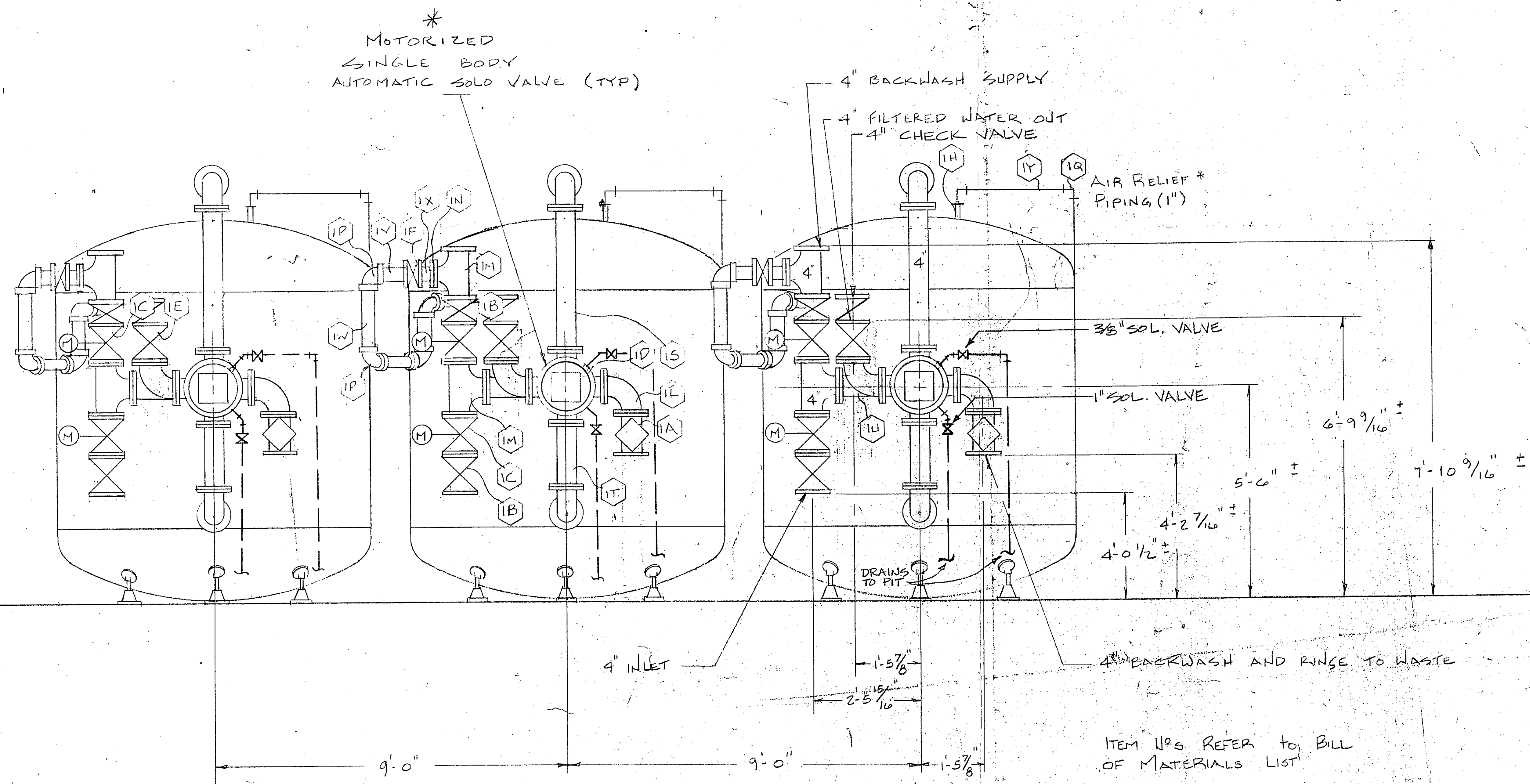
REV #4	CHG. PIPING & ADD SOLENOID VALVES W/ DRAINS TO PIT	AES J/S.
REV #3	ADD AUTO. VALVE/UM S. 5-8-86	KAC
REV #2	REV. BRINE PUMP 8-12-83	CEE
REV #1	REDESIGN 3-22-87	CEE

DUAL UNIT SODIUM ZEOLITE WATER SOFTENING SYSTEM W/BRINE TANK	DRAWN BY
LAMP LEJUNNE, N.C.	DATE
P.O. BOX 11676 (803)-324-7600 555 PADDOCK PARKWAY	3-30-83
	DRAWING NO. RF-910-5





- NOTES
- 1) ALL PIPE TO BE SEAMLESS SCH. 40 A 53 GR B
 - 2) ALL PIPE FITTINGS AND VALVES TO BE FACTORY PIPED AS MUCH AS PRACTICAL
 - 3) ALL DIMENSIONS FROM FLOOR HAVE TOLERANCE OF $\pm 1"$
 - 4) RWC TO SUPPLY A DIFFERENTIAL PRESSURE SWITCH TO BE INSTALLED BY OTHERS.



AS BUILT CONDITIONS

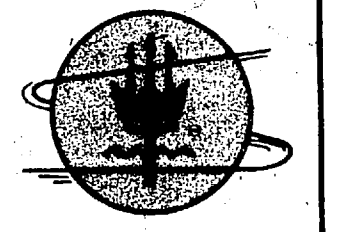
SATISFACTORY TO ARCHT. DATE 12/31/66

SATISFACTORY TO INSPECTOR DATE

KEY: [Signature]

CWC, INC. CONTRACTOR

Refinite Water Conditioning Co.
 ROCK HILL, SOUTH CAROLINA 29730



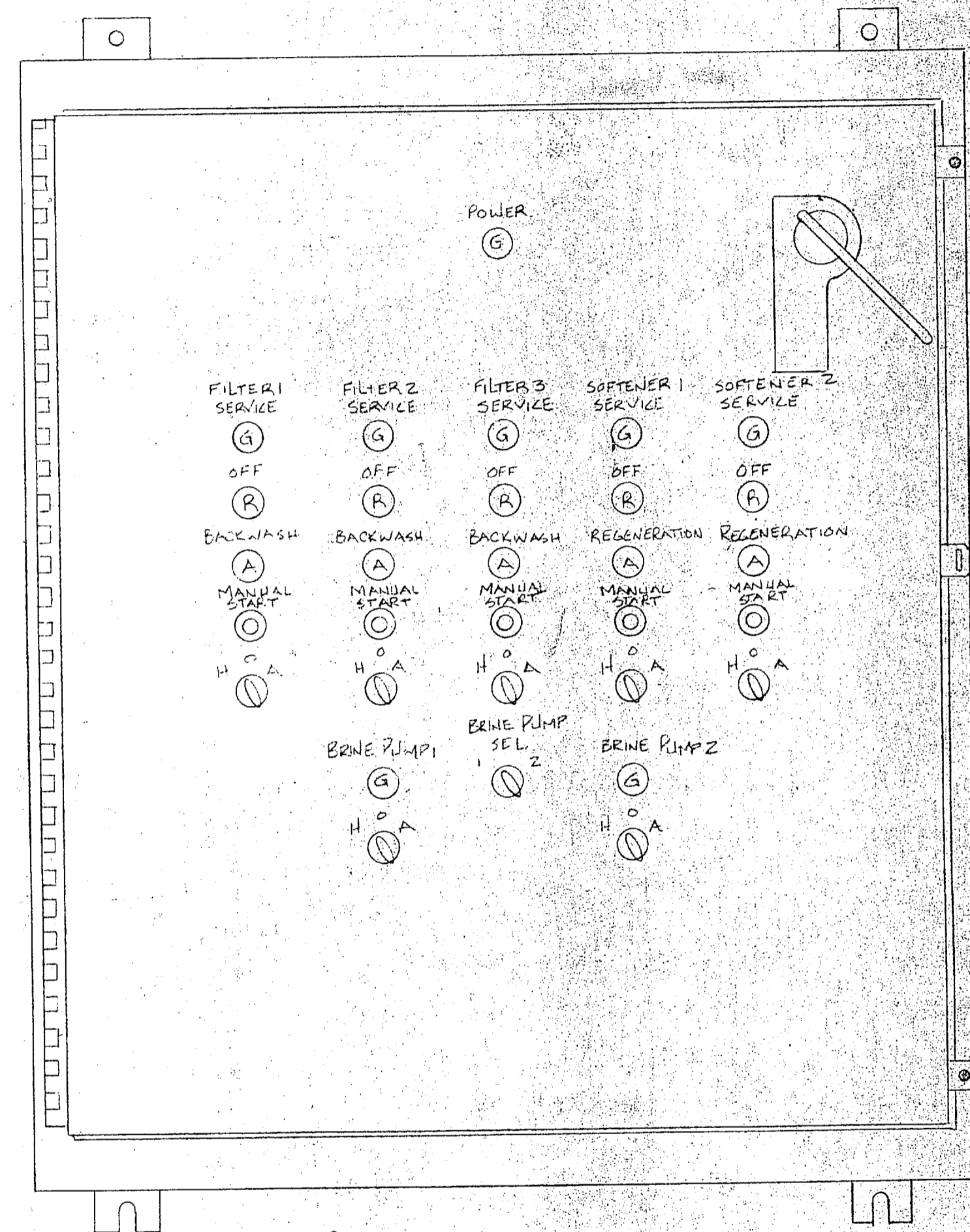
WORLD WIDE

3 UNIT PRESSURE FILTRATION SYSTEM WITH AUTO. SOLO VALVE		DRAWN BY CEC
CAMP LEJUNE, N.C.		DATE 3-30-83
P.O. BOX 11676 (803)-324-7600 555 PADDOCK PARKWAY		DRAWING NO. RF 910-1F

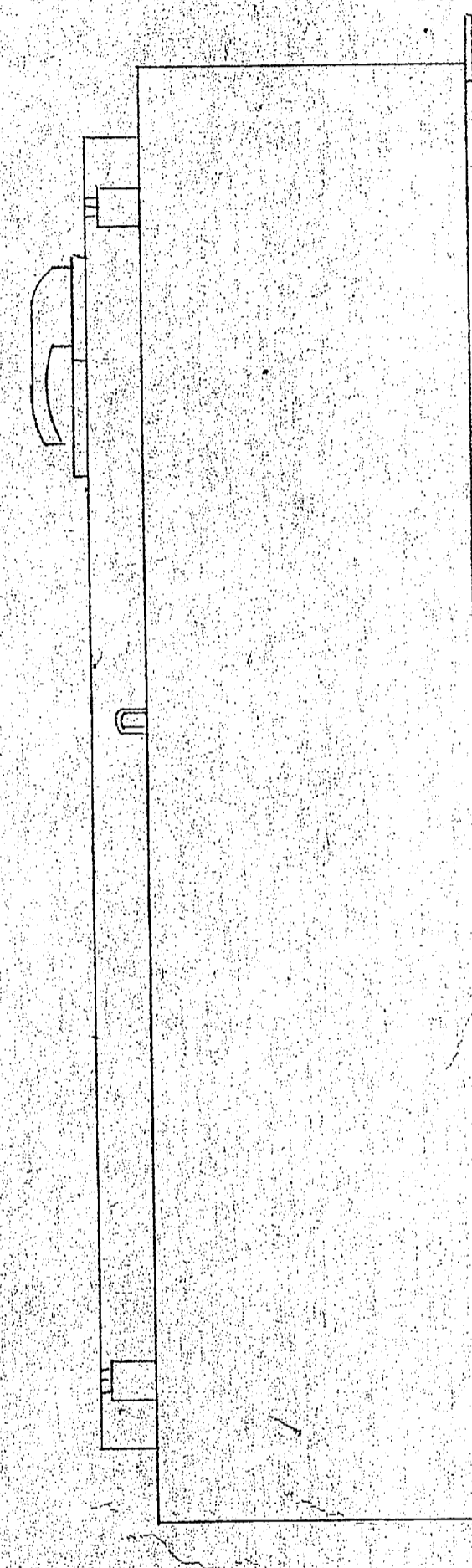
2	SHOW 1" #3/8" SOL VALVES & 4" CHECK	12-23-80	AEJ/ls
1	REV. SURFACE WASH PIPING.	8-23-83	RAE
NO	REVISION	DATE	BY

ITEM NOS REFER TO BILL OF MATERIALS LIST

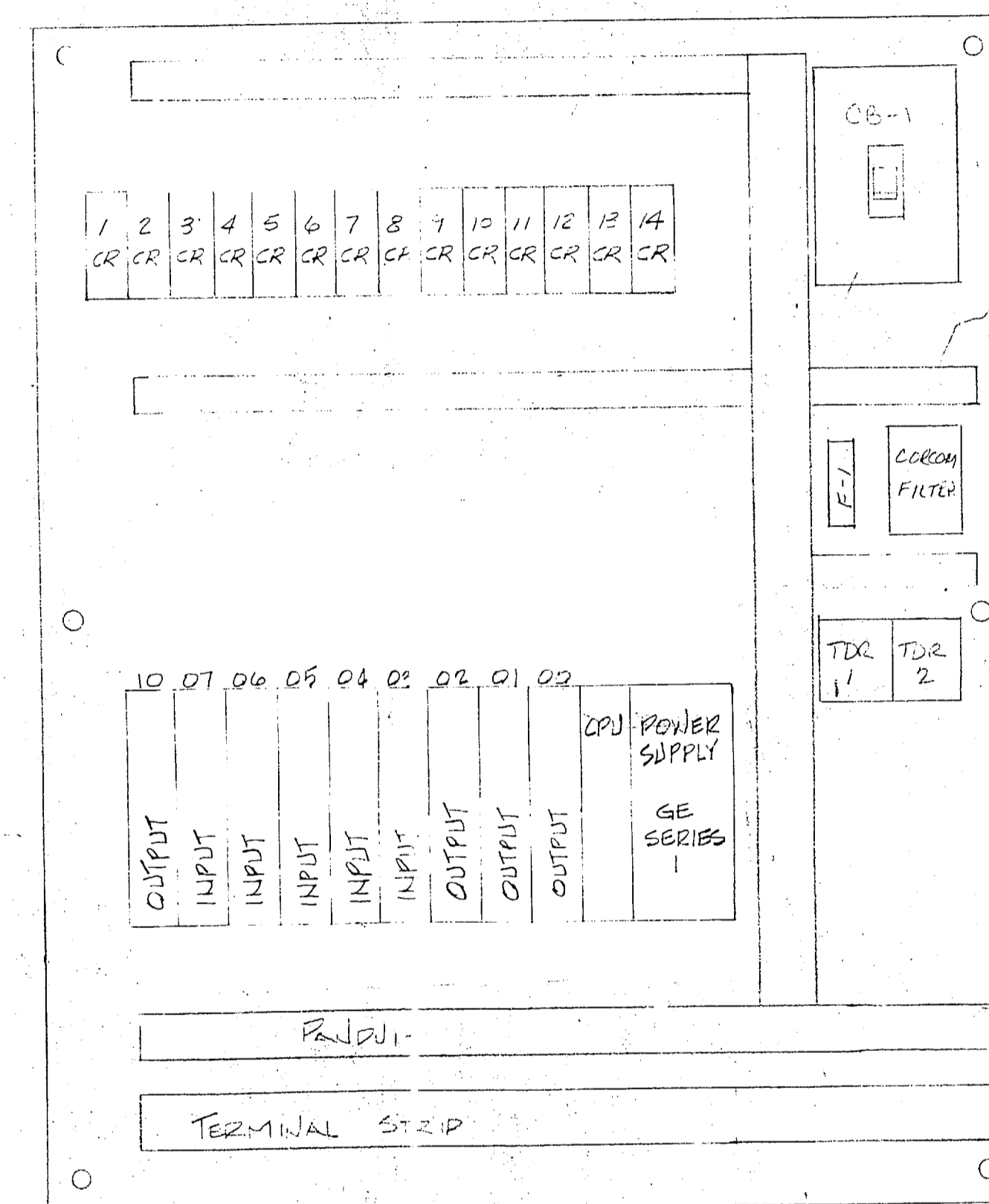




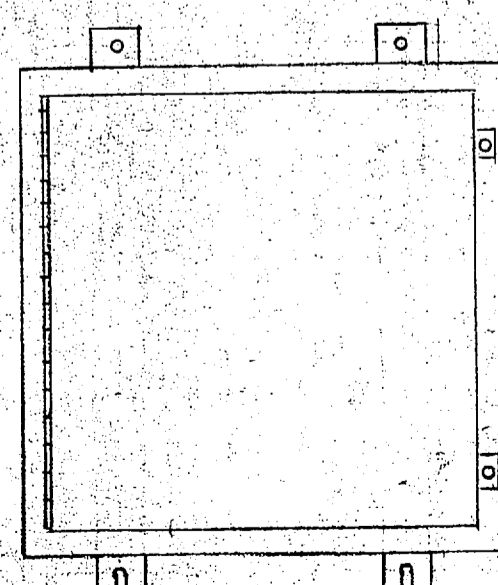
Main CP - FRONT



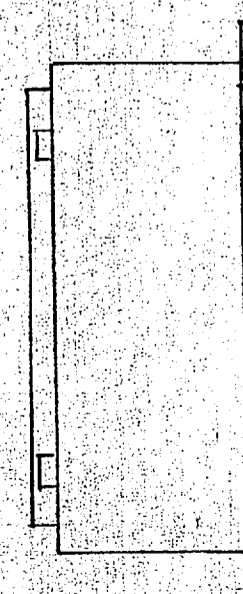
Main CP - SIDE



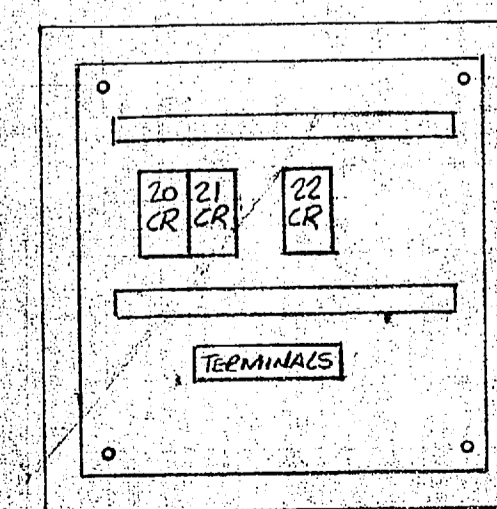
Main CP - INTERIOR



Auxiliary CP - FRONT



Auxiliary CP - SIDE



Auxiliary CP - INTERIOR

AS BUILT CONDITIONS

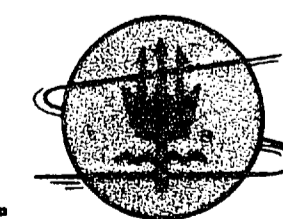
SATISFACTORY TO AROICC: _____ DATE _____

SATISFACTORY TO INSPECTOR: Ray Hunt DATE 12/31/86

CWC Inc. CONTRACTOR

81-1454

Refinite Water Conditioning Co.
 ROCK HILL, SOUTH CAROLINA 29730



WORLD WIDE

NO	DATE	BY	REVISION
1	12/31/86	Ray Hunt	REPLACED MICO B4 WITH GE SERIES 1

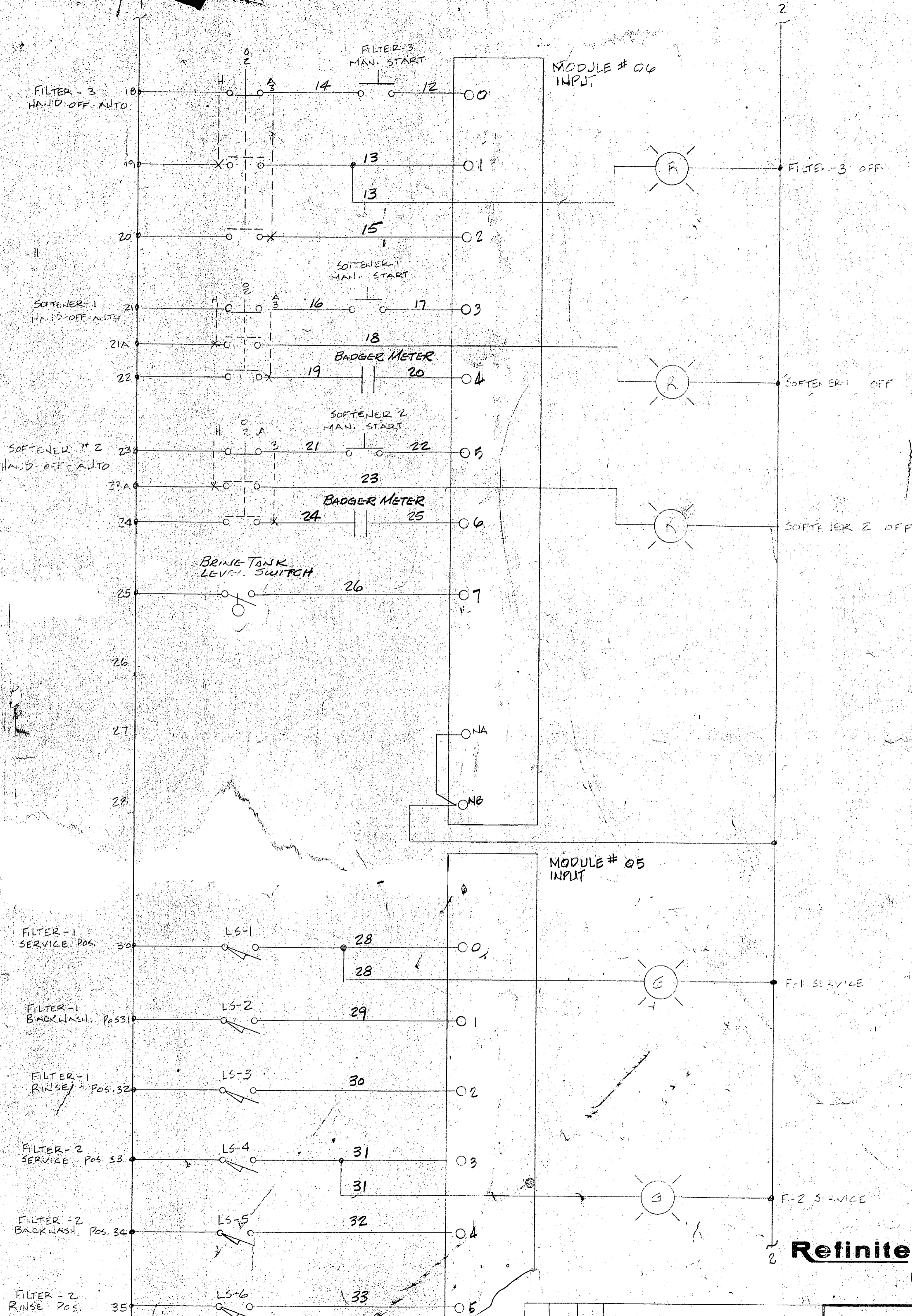
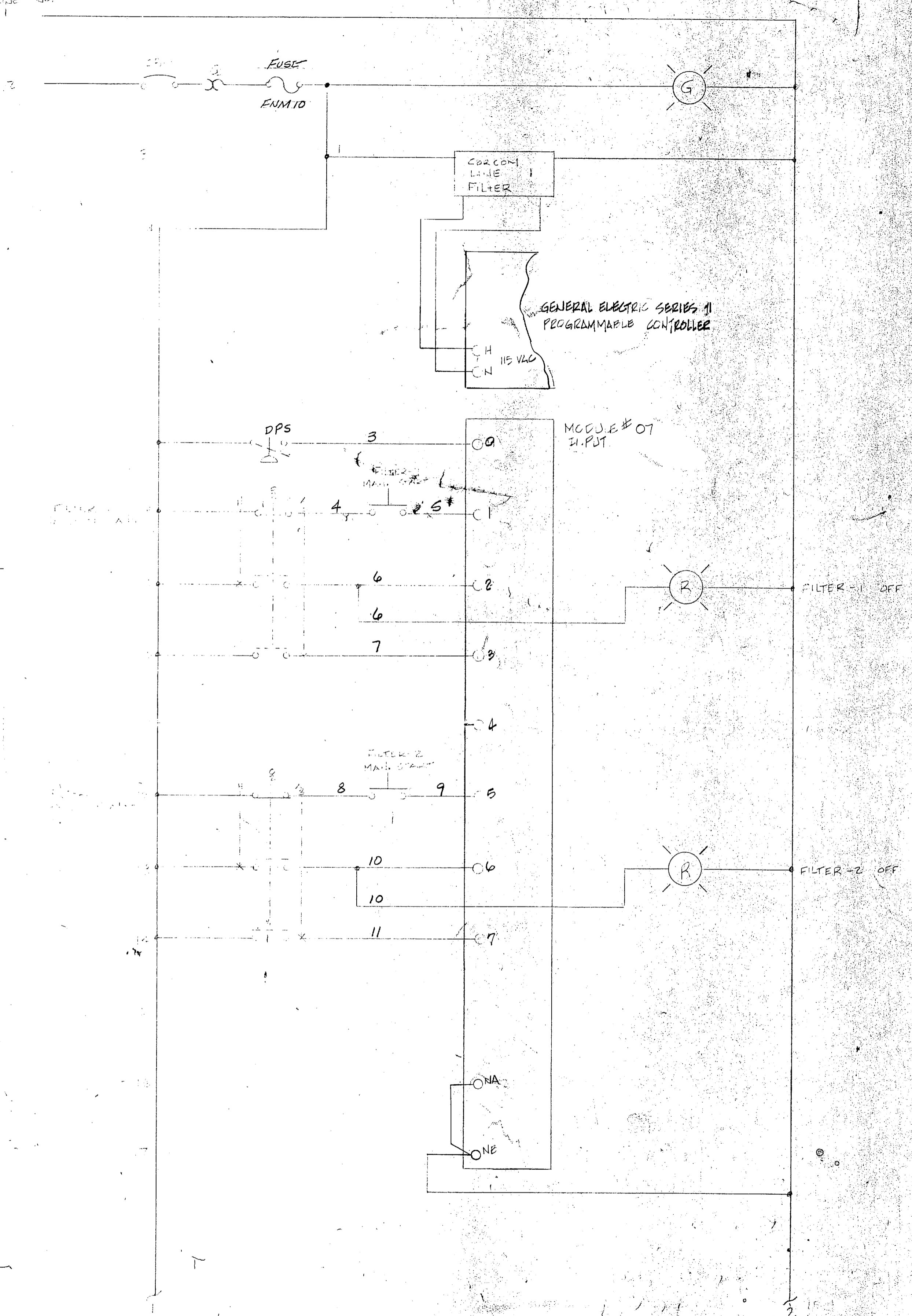
Enclosure & Sub Panel Layout
 Main & Auxiliary Control Panels
 Camp Lejeune, N.C.

P.O. BOX 11676 (803)-324-7600 555 PADDOCK PARKWAY

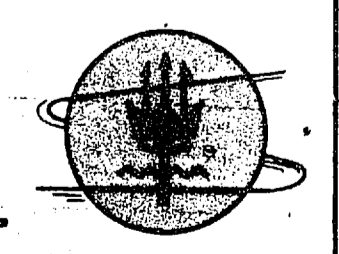
DRAWN BY: Rb
 DATE: 7-25-83
 DRAWING NO.: RF 810-26



LINE # 10.



Refinite Water Conditioning Co.
 ROCK HILL, SOUTH CAROLINA 29730



WORLD WIDE

NO	DATE	BY	REVISION
1	7-22-83	BR/RE	REPLACED MICRO B & WITH GE SERIES 1

WIRING DIAGRAM

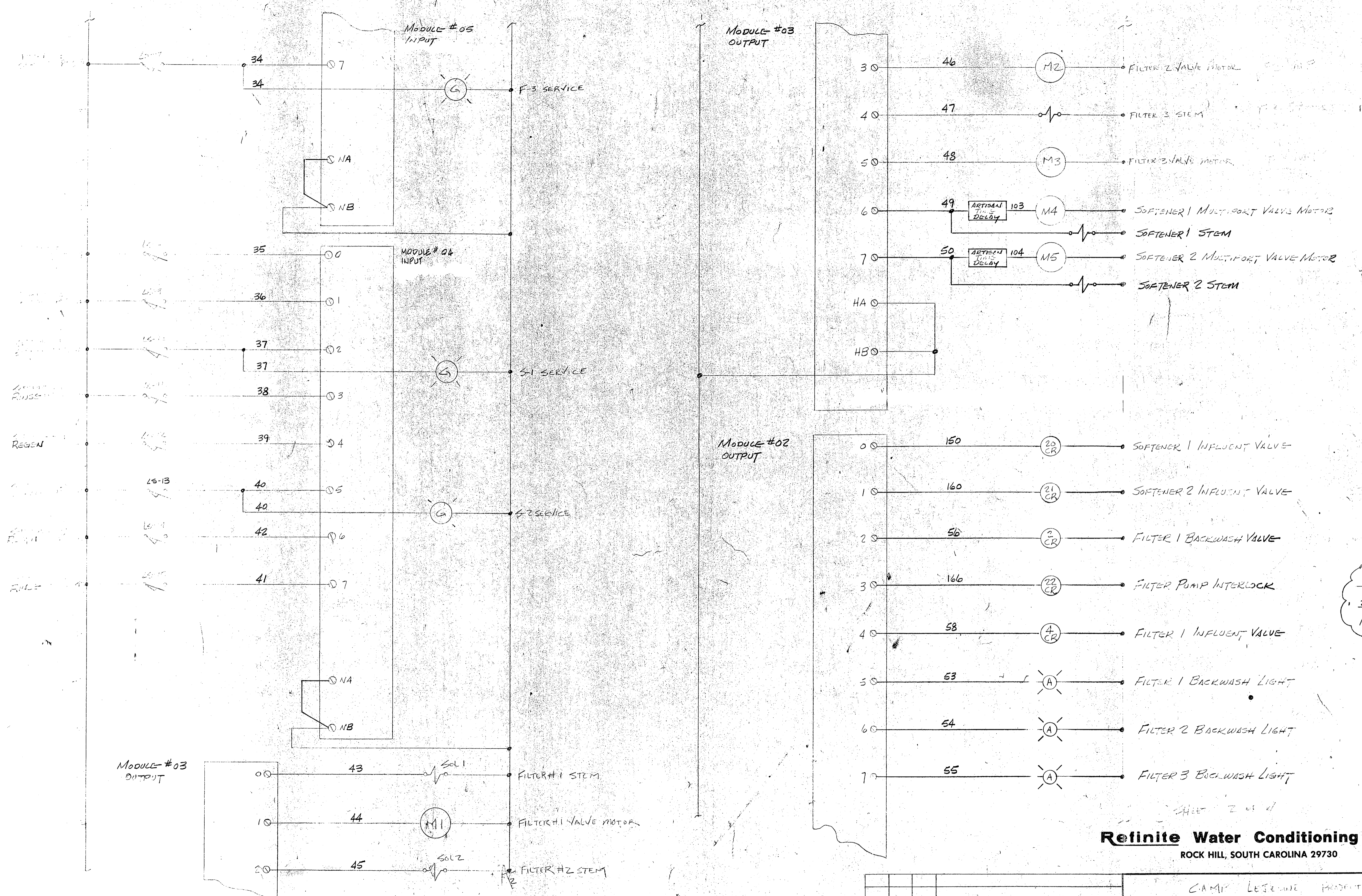
CAMP LEWIS, I.C.

P.O. BOX 11676 (803)-324-7600 555 PADDOCK PARKWAY

DRAWN BY
BR/RE
 DATE
7-22-83
 DRAWING NO.
RF 0110-27

SHEET 1 OF 4

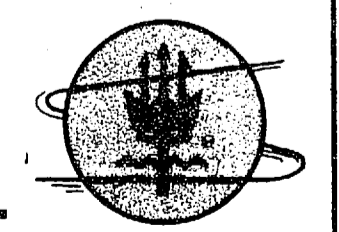




1A	22CR	1B	FILTER PUMP 1
2A	22CR	2B	FILTER PUMP 2

 NOTE: 208V

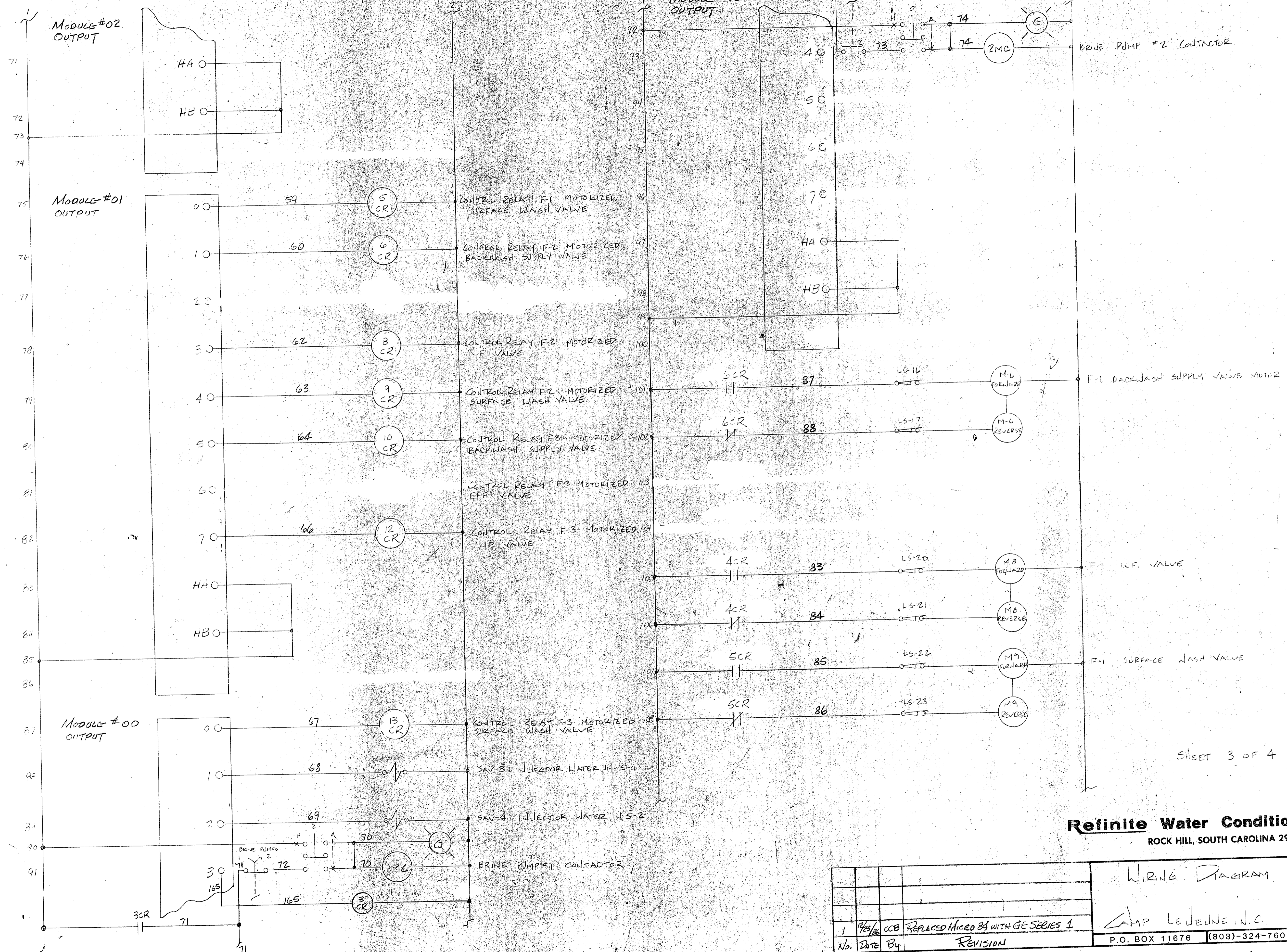
Refinite Water Conditioning Co.
 ROCK HILL, SOUTH CAROLINA 29730



WORLD WIDE

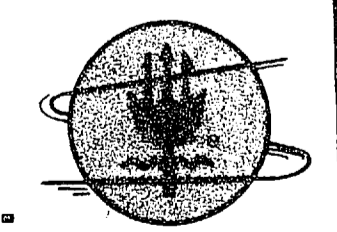
CAMP LESENE PROJECT			DRAWN BY EK/LS
WIRING DIAGRAM			DATE 7-2-73
REPLACED MICRO 34 WITH GE SERIES 1			DRAWING NO. RT 91025
No.	DATE	BY	REVISION
1	7/2/73	COB	REPLACED MICRO 34 WITH GE SERIES 1
P.O. BOX 11676			(803)-324-7600
555 PADDOCK PARKWAY			





SHEET 3 OF 4

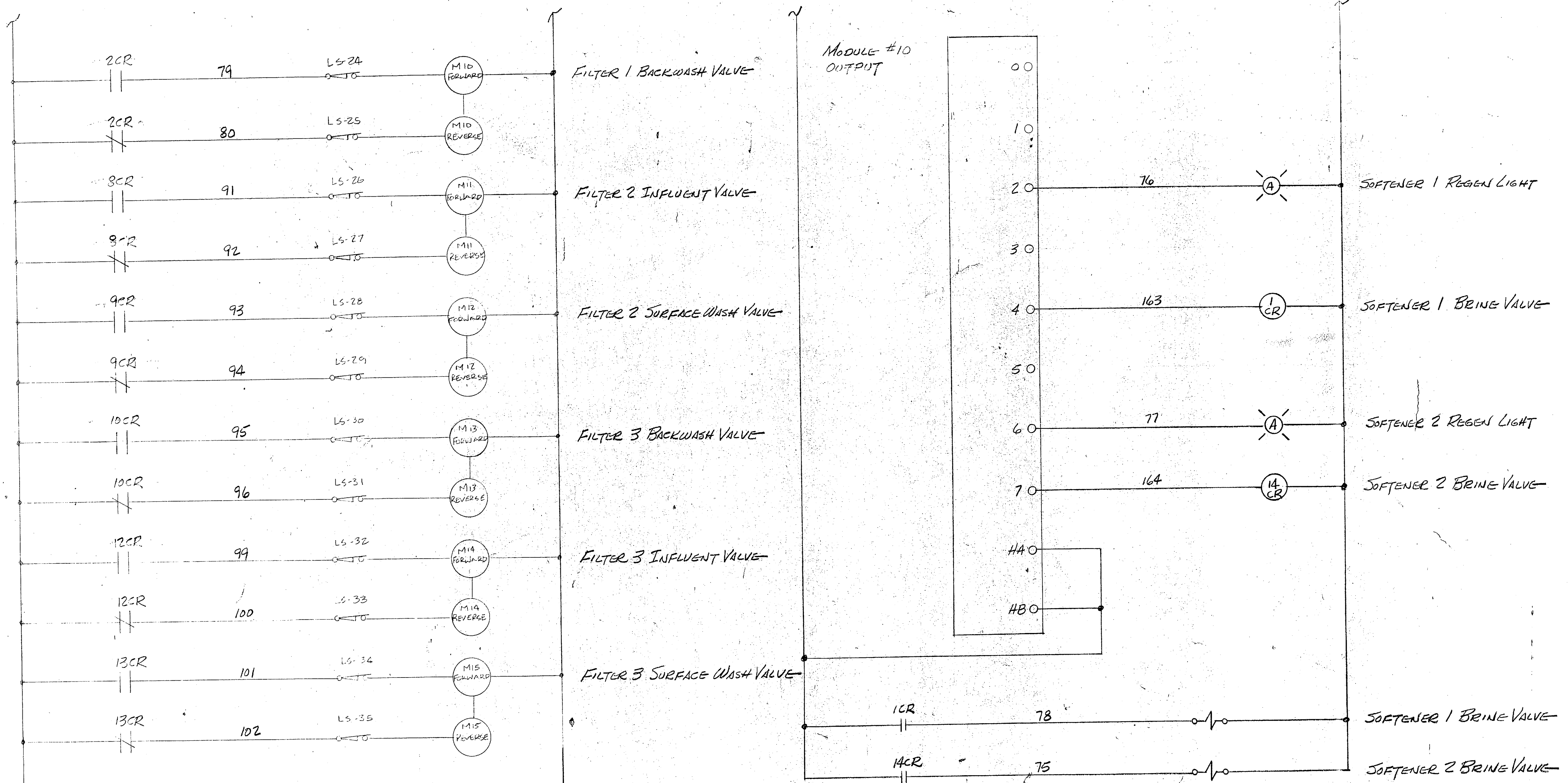
Refinite Water Conditioning Co.
 ROCK HILL, SOUTH CAROLINA 29730



No.	DATE	BY	REVISION
1	1/25/82	CCB	REPLACED MICO 84 WITH GE SERIES 1

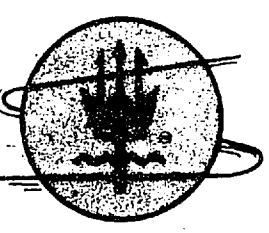
DRAWING NO. R0910-29		WORLD WIDE	
DRAWN BY B.K.		DATE	
P.O. BOX 11676		(803)-324-7600	
555 PADDOCK PARKWAY		CAMP LEJEUNE, N.C.	





SHEET 4 OF 4

Refinite Water Conditioning Co.
 ROCK HILL, SOUTH CAROLINA 29730



WORLD WIDE

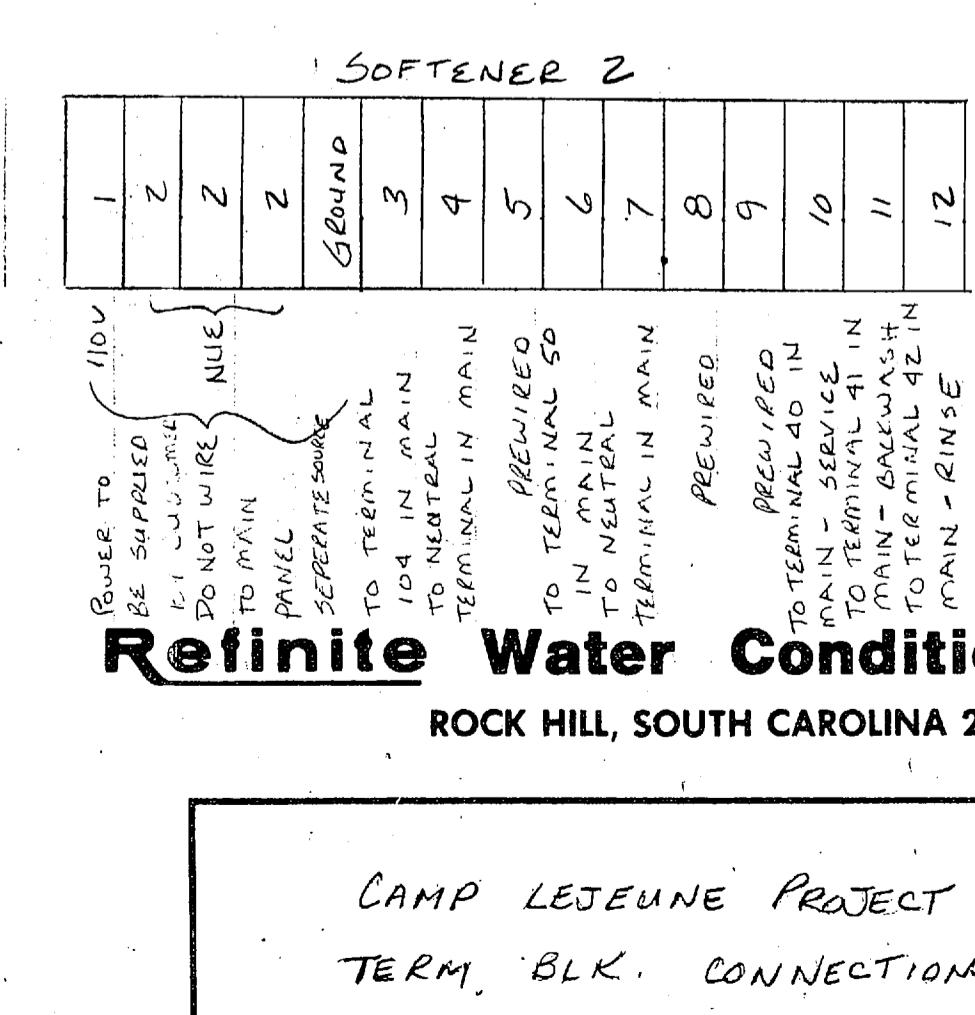
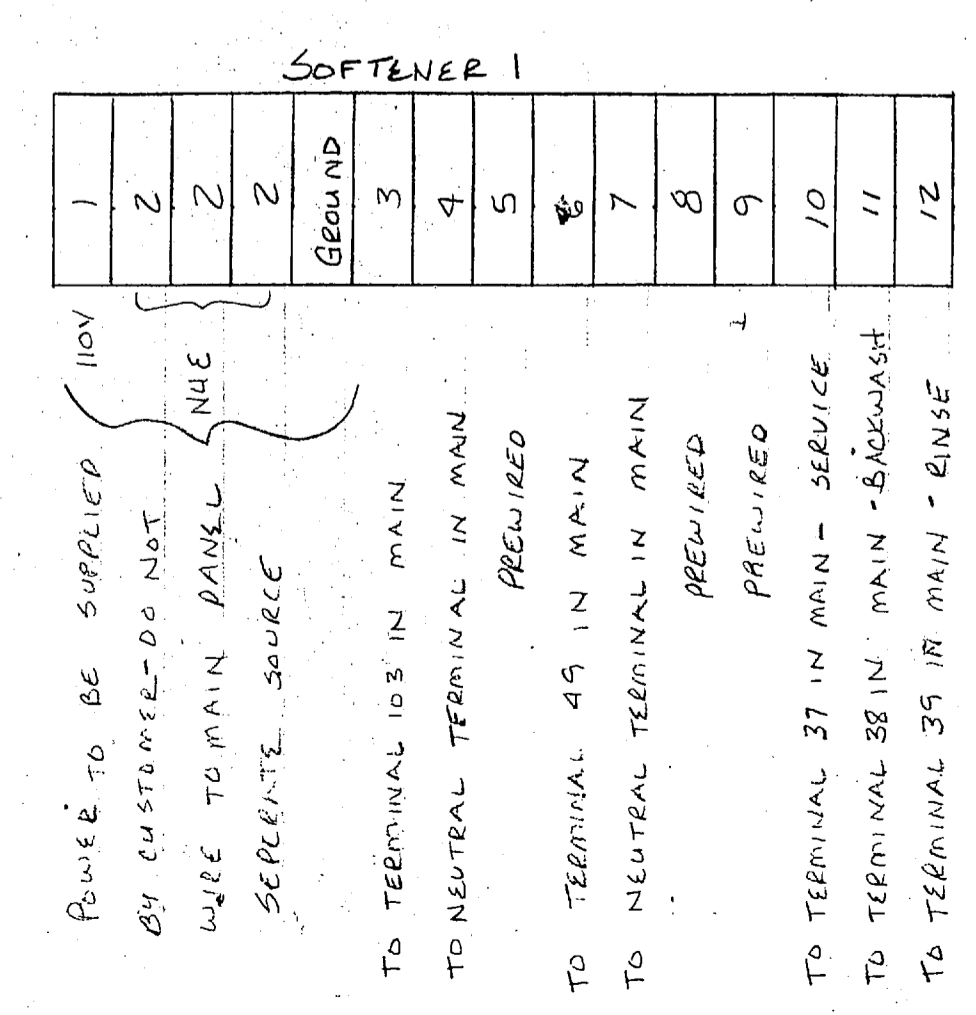
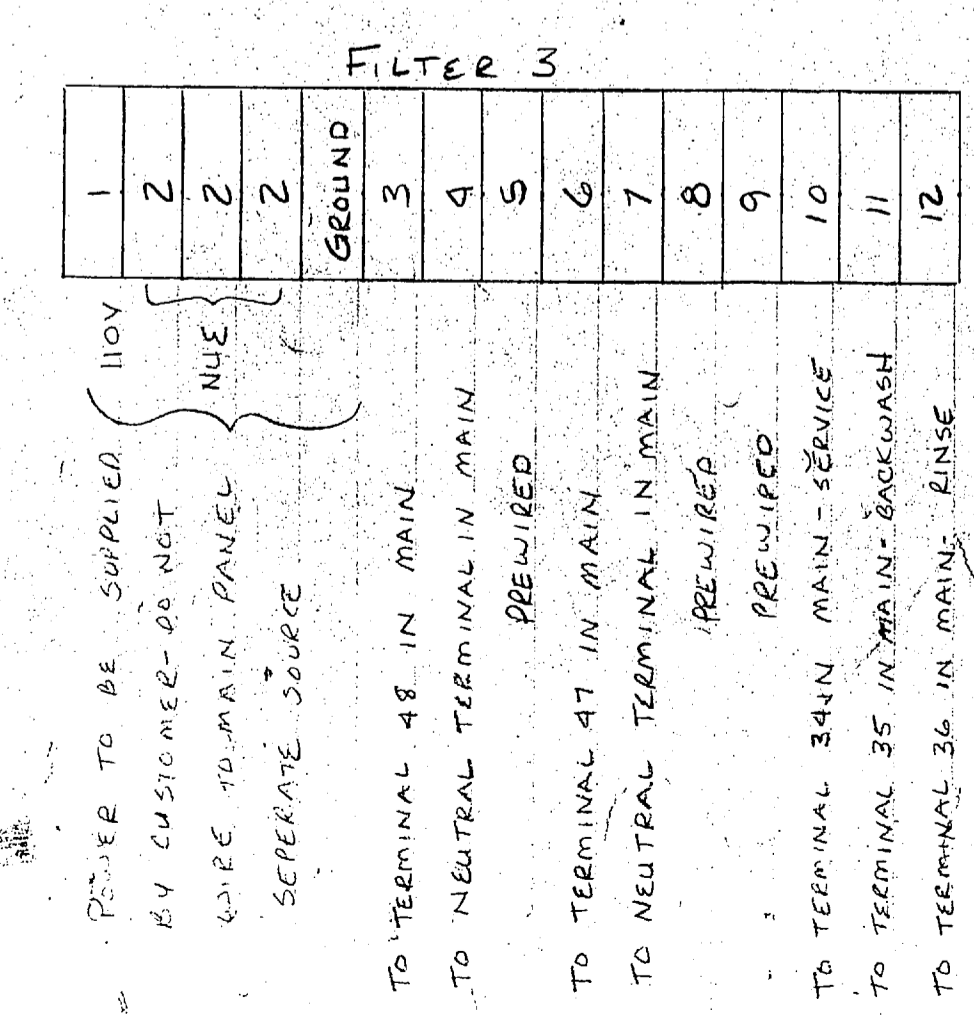
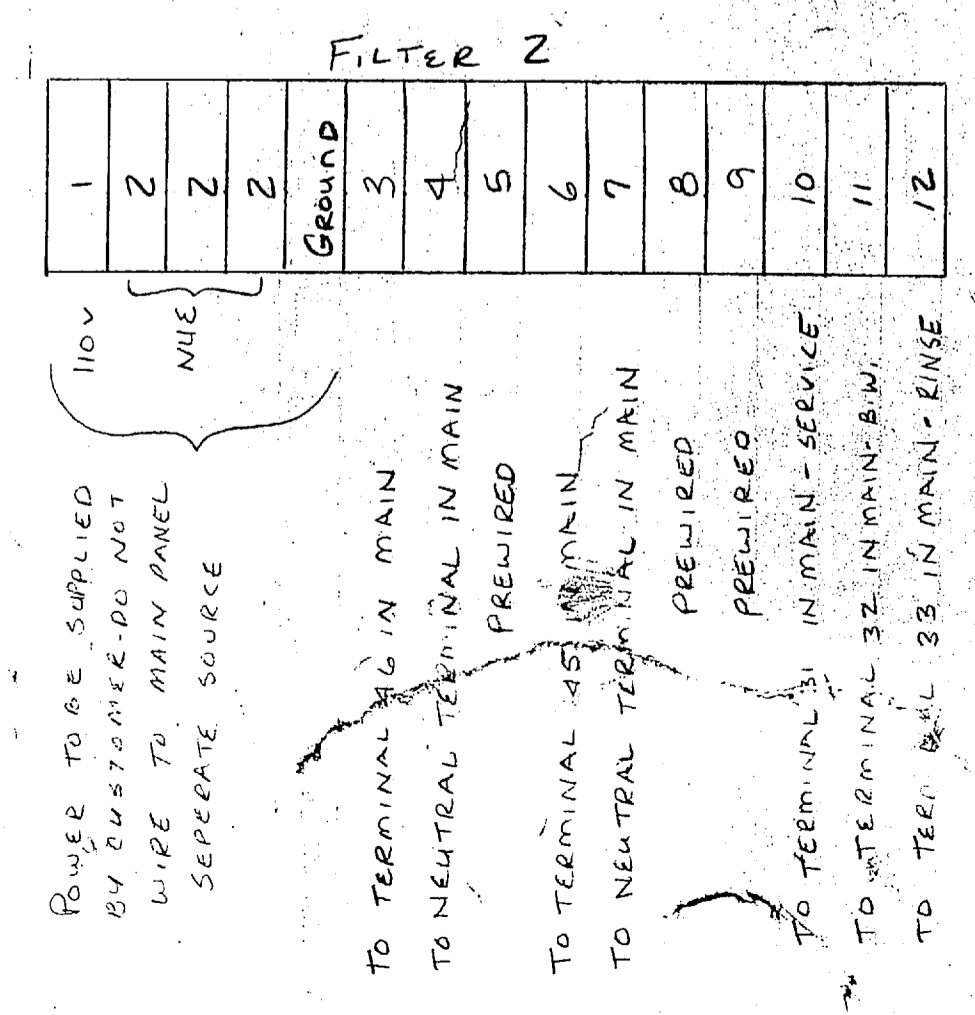
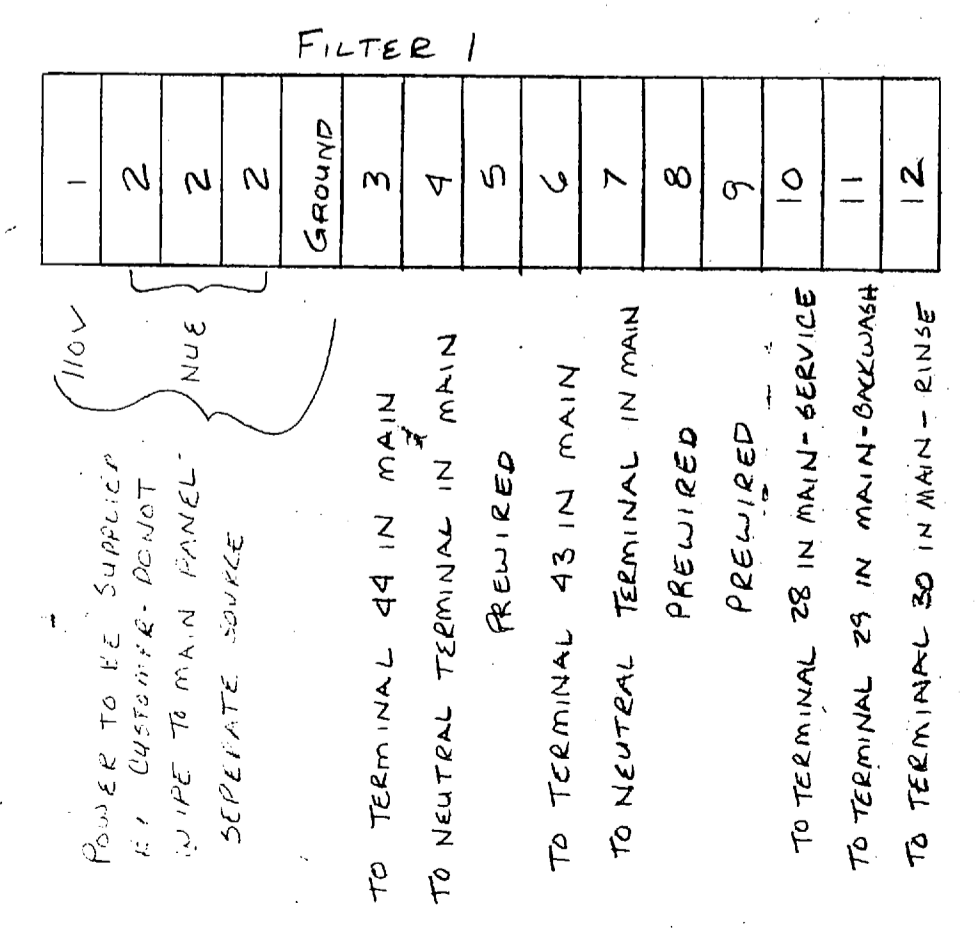
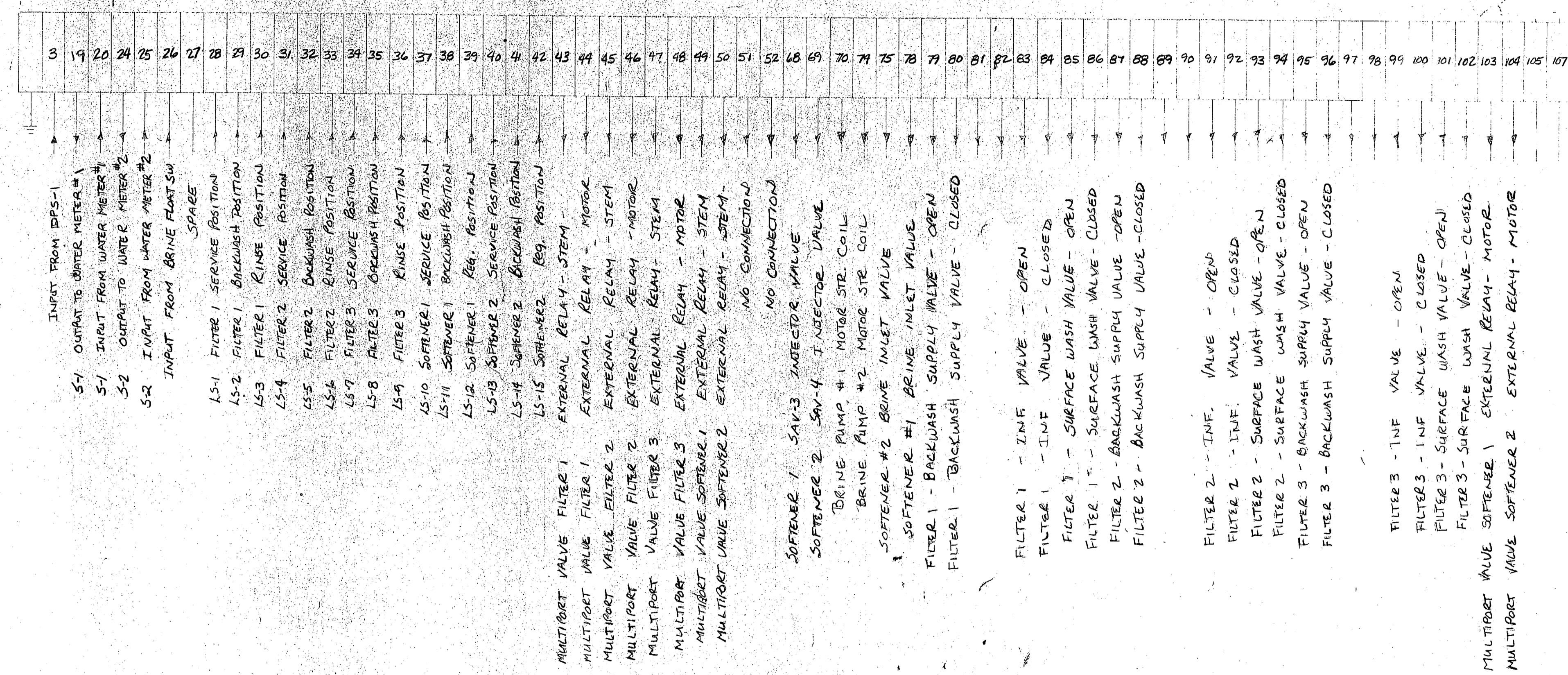
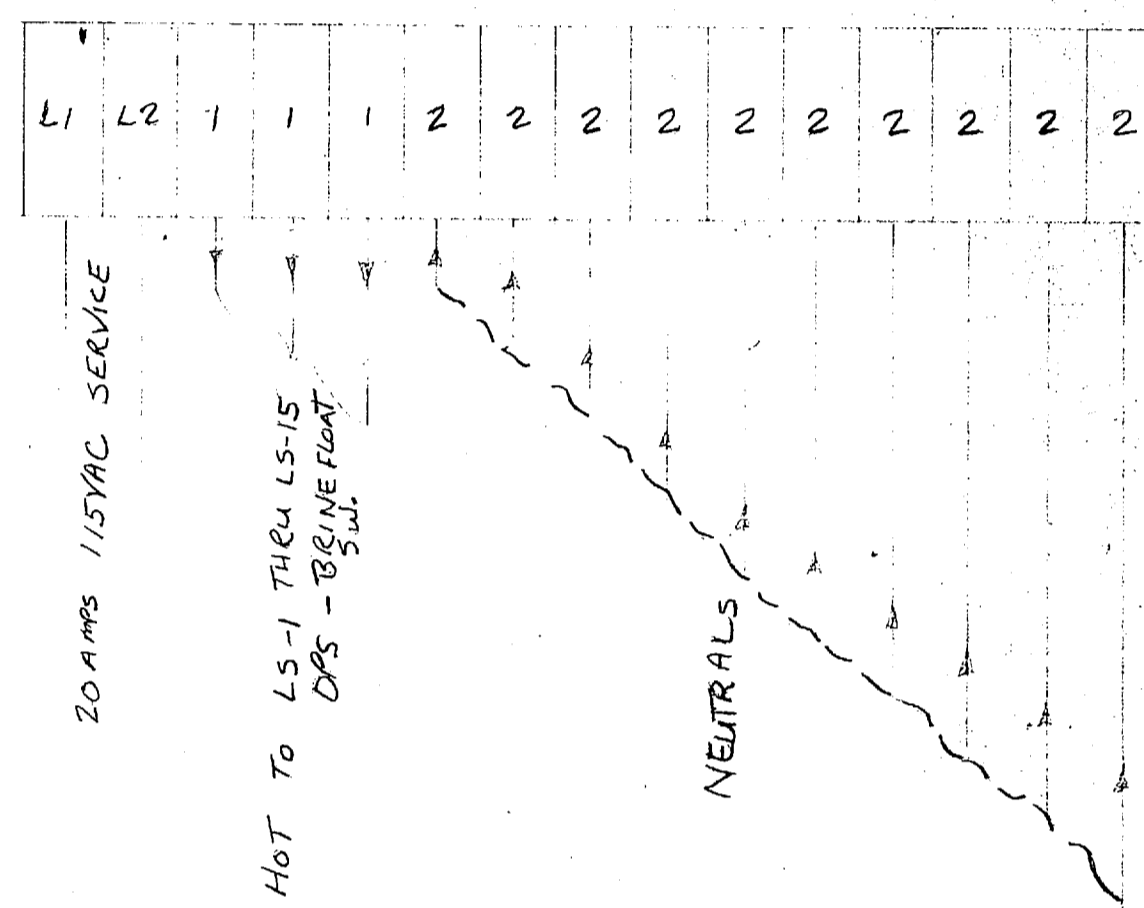
DRAWN BY B.C.		DATE	
DRAWING NO. RF 10-30		P.O. BOX 11676 (803)-324-7600 555 PADDOCK PARKWAY	
1	REB/CB	REPLACED MICO 84 WITH GE SERIES 4	CAMP LEWIS, N.C.
No.	Date	By	REVISION



TB-1 POWER TERM. BLK.

TB-2

ARROW INDICATES POWER FLOW



No.	1	DATE	7/23/86	BY	CLB	REVISION	Revised As BUILT
-----	---	------	---------	----	-----	----------	------------------

Refinite Water Conditioning Co.
 ROCK HILL, SOUTH CAROLINA 29730
 WORLD WIDE

CAMP LEJEUNE PROJECT
 TERM. BLK. CONNECTIONS

DRAWN BY
 DATE
 7-20-86
 DRAWING NO.
 RF-910-31

P.O. BOX 11676 (803)-324-7600 555 PADDOCK PARKWAY

