

LIST OF GASOLINE ENGINES IN PLANTS AND WELLS - WATER TREATMENT

BLDG. 20, HADNOT POINT - 2 Continental (6 Cyl)
1 Chrysler Generator (6 Cyl)

WELLS

601 - 1 Wisconsin (4 Cyl)
603 - 1 " " "
608 - 1 Allis-Chalmers (4 Cyl)
610 - 1 " " " "
613 - 1 " " " "
617 - 1 Wisconsin (4 Cyl)
621 - 1 Ford (4 Cyl)
625 - 1 Allis-Chalmers (4 Cyl)
626 - 1 " " " "
627 - 1 " " " "
638 - 1 Continental (4 Cyl)"
639 - 1 " " " "
640 - 1 " " " "
651 - 1 Ford (4 Cyl)
LCH 4007 - 1 Allis-Chalmers (4Cyl)

TOTAL 18

BLDG. 670, HOLCOMB BLVD. - 1 Waukesha Generator (6 Cyl)
1 Ford (8 Cyl)
1 Ford (6 Cyl)

WELLS

643 - 1 Ford (4 Cyl)
645 - 1 " "
646 - 1 " "
647 - 1 " "

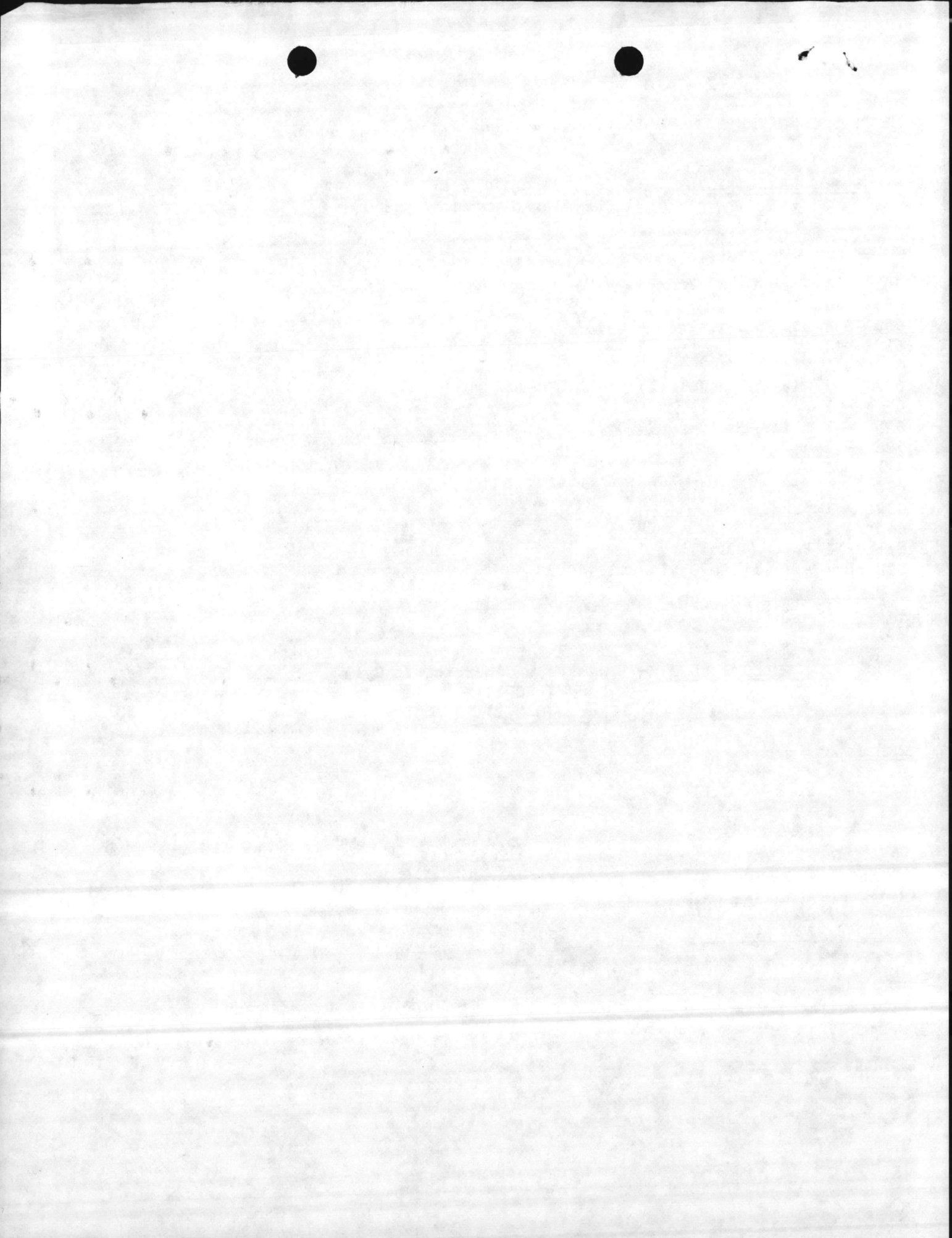
TOTAL 7

BLDG. TT-38, TARAWA TERRACE - 1 Continental (6 Cyl)

WELLS

TT-53 - 1 Wisconsin (4Cyl)
TT-54 - 1 " "

TOTAL 3



BLDG. M-178, MONTFORD POINT - 1 Continental (6 Cyl)

WELLS

M-168 - 1 Allis-Chalmers (4 Cyl)
M-197 - 1 Ford (4 Cyl)
M-629 - 1 " "
M-630 - 1 " "

TOTAL 5

BLDG. TC-508, CAMP GEIGER -

BLDG. TC-501, PUMPING PLANT - 1 International (6 Cyl)

WELLS

TC-502 - 1 Allis-Chalmers (4 Cyl)
TC-504 - 1 " " "
TC-1001 - 1 Wisconsin (4 Cyl)

TOTAL 4

BLDG. MCAS-110, NEW RIVER AIR STATION - 1 Continental (6 Cyl)

BLDG. 2003, EMERGENCY PUMP STATION - 1 Continental (6 Cyl)

WELLS

Well O - 1 Ford (4 Cyl)
Well R - 1 " "

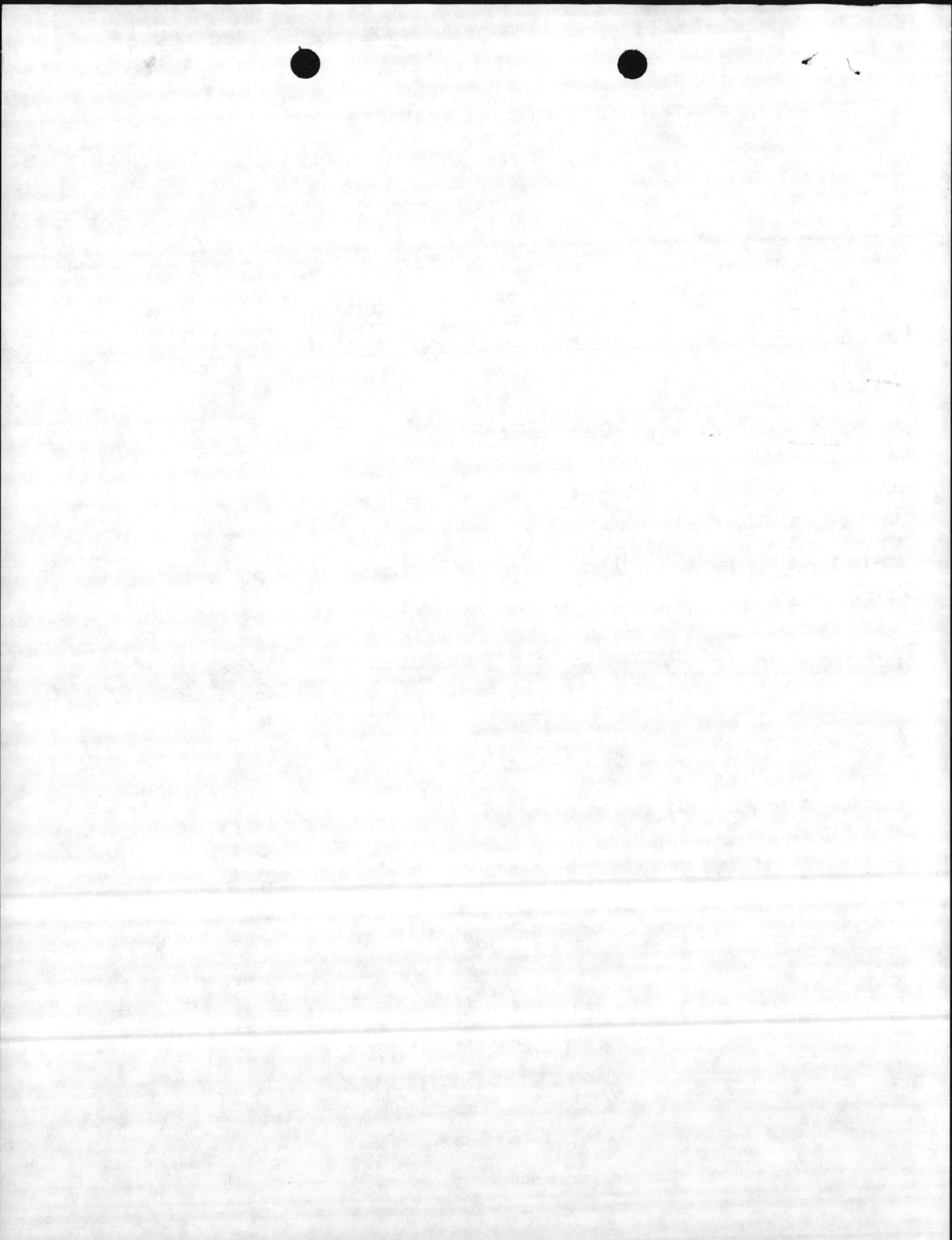
TOTAL 4

BLDG. RR-85, RIFLE RANGE - 1 Continental (6 Cyl)

WELLS

RR-45 - 1 Allis-Chalmers (4 Cyl)
RR-227 - 1 " " "

TOTAL 3



BLDG. BB-190, COURTHOUSE BAY - 1 Continental (6 Cyl)

WELLS

BB-43 - 1 Waukesha (4 Cyl)

A-5 - 1 Ford (4 Cyl)

TOTAL 3

BLDG. BA-138, ONSLOW BEACH - 1 Continental (6 Cyl)

WELLS

BA-164 - 1 Ford (4 Cyl)

TOTAL 2

GRAND TOTAL 49 GASOLINE ENGINES

