

C.P.

4188  
NREAD

From: Assistant Chief of Staff, Facilities, Marine Corps Base,  
Camp Lejeune  
To: Assistant Chief of Staff, Logistics, Marine Corps Base,  
Camp Lejeune (ATTN: Motor Transport Officer)

Ref: (a) AC/S, FAC memo of 30 Nov 87

Encl: (1) List of Present Assets and Recommended Vehicle  
Needs/Assignment  
(2) Schedule of Vehicle Use (Minimum)

1. Reference (a) identified the upcoming availability of two Motor Transport vehicles as a result of Base Maintenance's leasing of vehicles. As of this date, no additional vehicles have been secured by this division in which to carry out assigned responsibilities. Enclosure (1) provides a list of present and recommended vehicle assets which are needed to meet and complete these responsibilities. A minimal schedule of vehicle use is provided in enclosure (2).
2. With the expansion of duties and responsibilities to include the Waste Oil program, oil pollution abatement facility servicing, in addition to the Hazardous Material/Hazardous Waste program and indepth laboratory analysis/sampling program, present assets have been greatly outstripped. It is requested vehicles addressed on enclosure (1) be secured through GSA or this request be processed to facilitate procuring the vehicles via local lease agreement.
3. Point of contact is Mr. Danny Sharpe, Natural Resources and Environmental Affairs Division, ext. 2195/1698.

T. J. DALSELL





1. PRESENT ASSETS:

- a. USMC No. 275514, Type 9608, 4x4
- b. USMC No. 278847, Type 9508, 2 wheel drive

2. RECOMMENDED VEHICLE ASSETS AND PROJECTED ASSIGNMENT/USE

- a. Vehicles for Environmental Chemistry and Microbiology Section, Building 65:

- (1) One Cargo Van, 2 wheel drive
- (2) Two Pickups, 2 wheel drive,  $\frac{1}{2}$  Ton capacity

Assignment

Used by Supervisory Chemist, Supervisory Physical Science Technicians, (3) Physical Science Technicians, and Environmental Control Specialist, and Biological Technician.

Use

In waste oil, Hazardous Materials/Hazardous Waste, Waste Water treatment, well and surface water sampling. Also used in transport of emergency response related personnel and test equipment in the event of chemical related instances where a chemist/technician is required, and general administrative tasks.

- b. Vehicles for Oil Pollution Abatement Section:

- (1) One Pickup,  $\frac{1}{2}$  Ton capacity,

Assignment

Used by Motor Vehicle Operator Foreman.

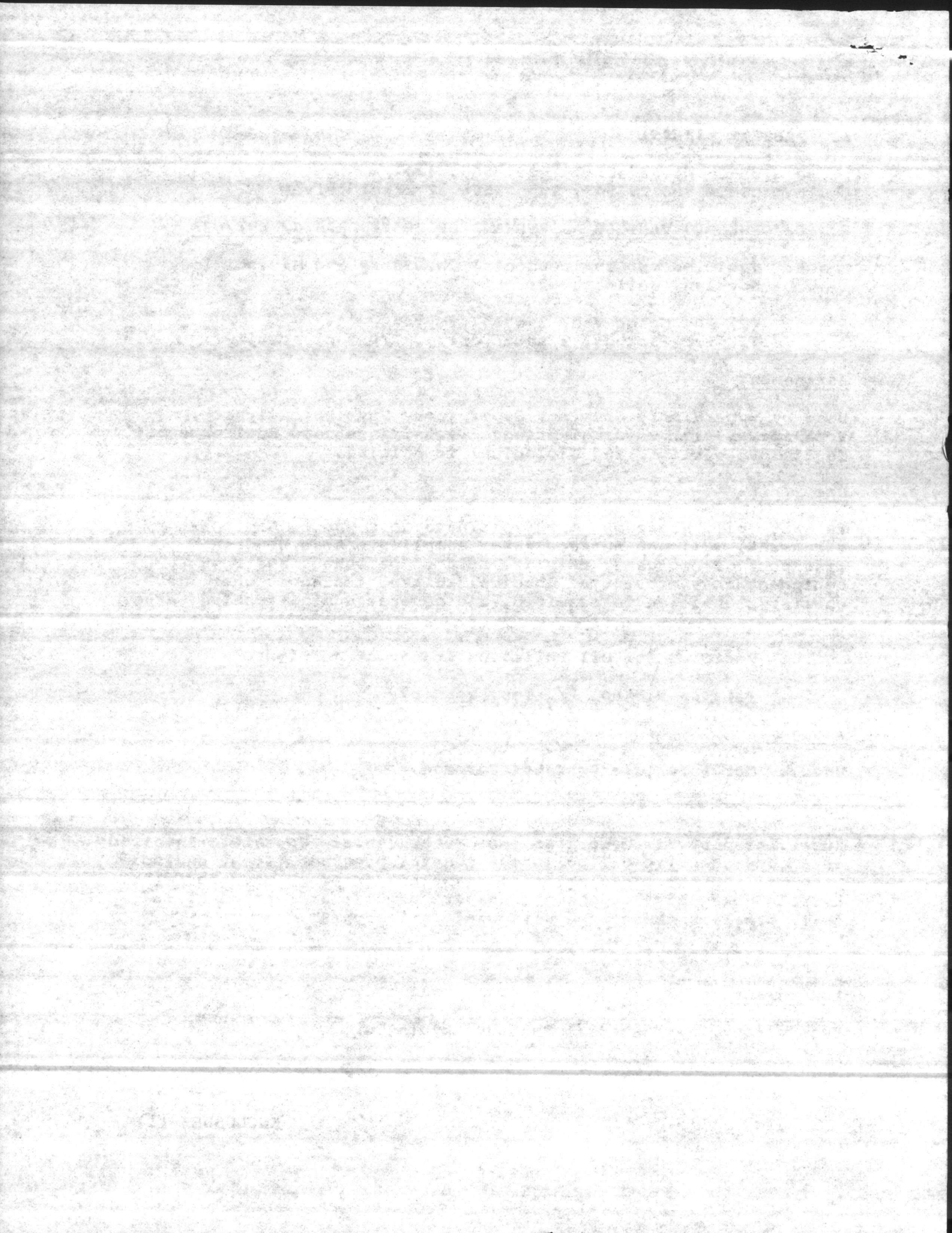
Use

Supervision of field work of four Motor Vehicle Operators involved in a comprehensive oil pollution control program. To be equipped with oil and hazardous material response equipment used for all terrain emergency response, transport of gear and personnel and daily problems associated with waste oil program.

- (2) One Blazer, 4x4

Assignment

Supervisory Environmental Control Specialist





Use

In daily supervision of spill response, cleanup, waste oil transport, waste oil inspections and administrative tasks in conjunction with supervisory tasks associated with pollution abatement facilities.

Vehicle

(3) Two Pickups, 2 wheel drive,  $\frac{1}{2}$  Ton capacity

Assignment

(2) Oil Pollution Control Technicians (SPCC)

Use

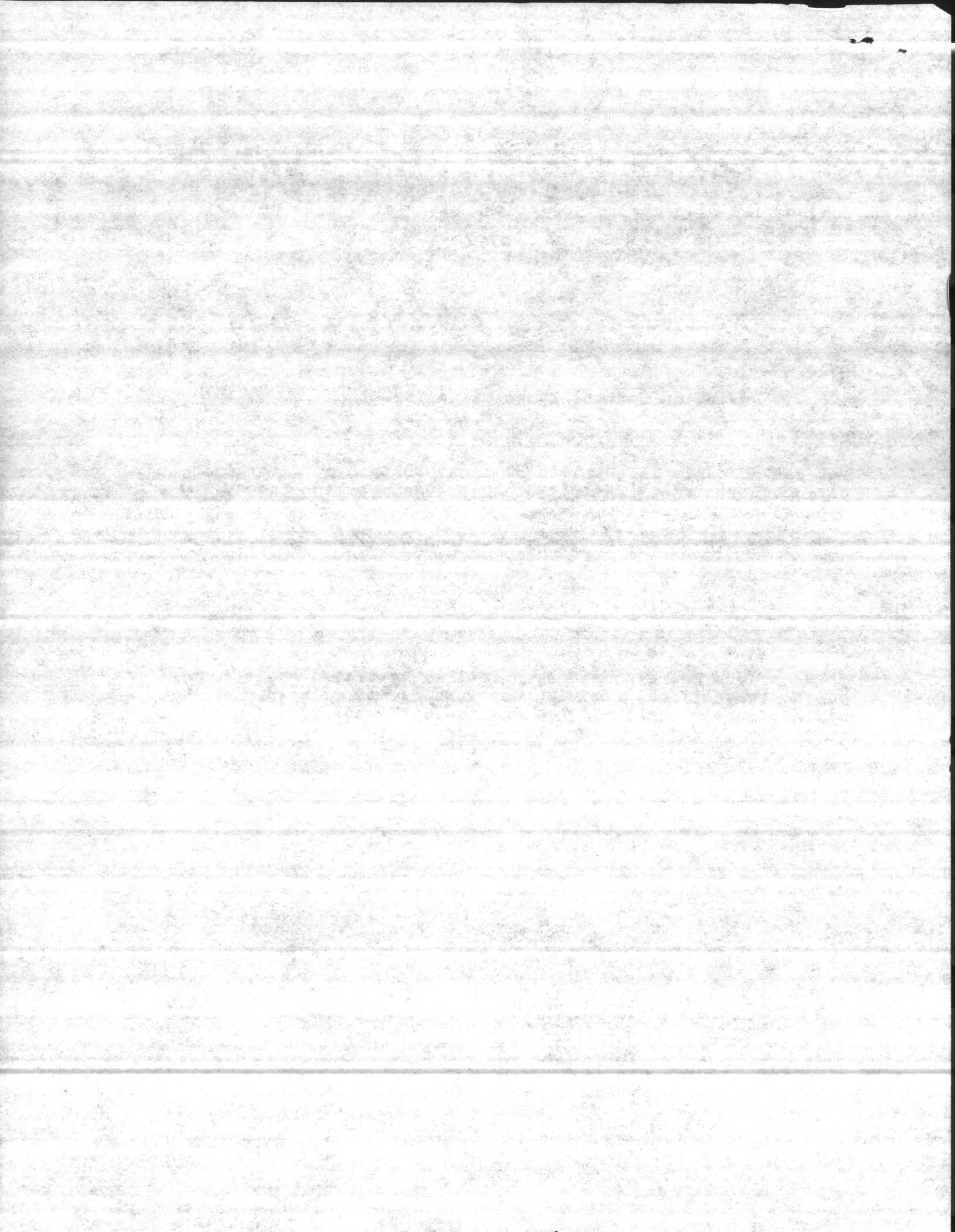
For use in daily inspections of tanks containing waste oils, oil pollution abatement facility inspections, spill response and general administrative task.

c. Vehicles for Environmental Management Personnel:

- (1) One 8 passenger Van
- (2) One Pickup, 4x4,  $\frac{1}{2}$  ton

Use

In Hazardous Waste/Hazardous Material, Readiness Assistance Visits/Inspections, training commitments and related administrative tasks, in conjunction with supervisory needs of Soil, Water, and Environmental Branch by the Supervisory Ecologist and the Hazardous Waste Management Inspector.





SCHEDULE OF VEHICLE USE (MINIMUM)

<u>Type</u>	<u>Activity</u>
Drinking water (VOC's, metals) samples	Minimum, (4) times per year, (6) sites
Surface water sampling	Minimum, (3) times per week - June, July, August, September, (1) time per week other periods
Surface water sampling (Wallace Creek, Pinesy Green Road, Highway 24)	Minimum, (1) time per month, (3) sites
Monitor Wells	Minimum, (1) time per year/or as directed
Waste Water Treatment Facilities	(2) times per month, (7) sites
Spills (samples/transport)	Daily, samples as directed/needed
Waste oil samples, (tanks, drums)	Daily, as directed
Unknowns, samples	As directed
Readiness Assistance Visits/ Inspections	Weekly (Division, Group, Base)
Hazardous Waste/Hazardous Material Inspections (follow-up/debriefs, etc)	Weekly
Courtesy inspections	Weekly
Hazardous Material/Hazardous Waste classes	Weekly, as requested
Spill/Spill Response/Equipment and personnel transport	Daily
Waste oil/pollution abatement facility inspections	Daily
Supervision of waste oil pollution abatement	Daily
Administrative duties	Daily

