

11332/2
NREAD
5 Feb 1986

Cur
DD

From: Commanding General, Marine Corps Base, Camp Lejeune
To: Commanding Officer, Dental Clinic, Marine Corps Base,
Camp Lejeune

Subj: FLUORIDE TESTING OF BASE WATER SUPPLY

Ref: (a) OPNAVINST 11330.1 of 1 Aug 1973

Encl: (1) Semi-Annual Fluoride Well Analysis of January 1986

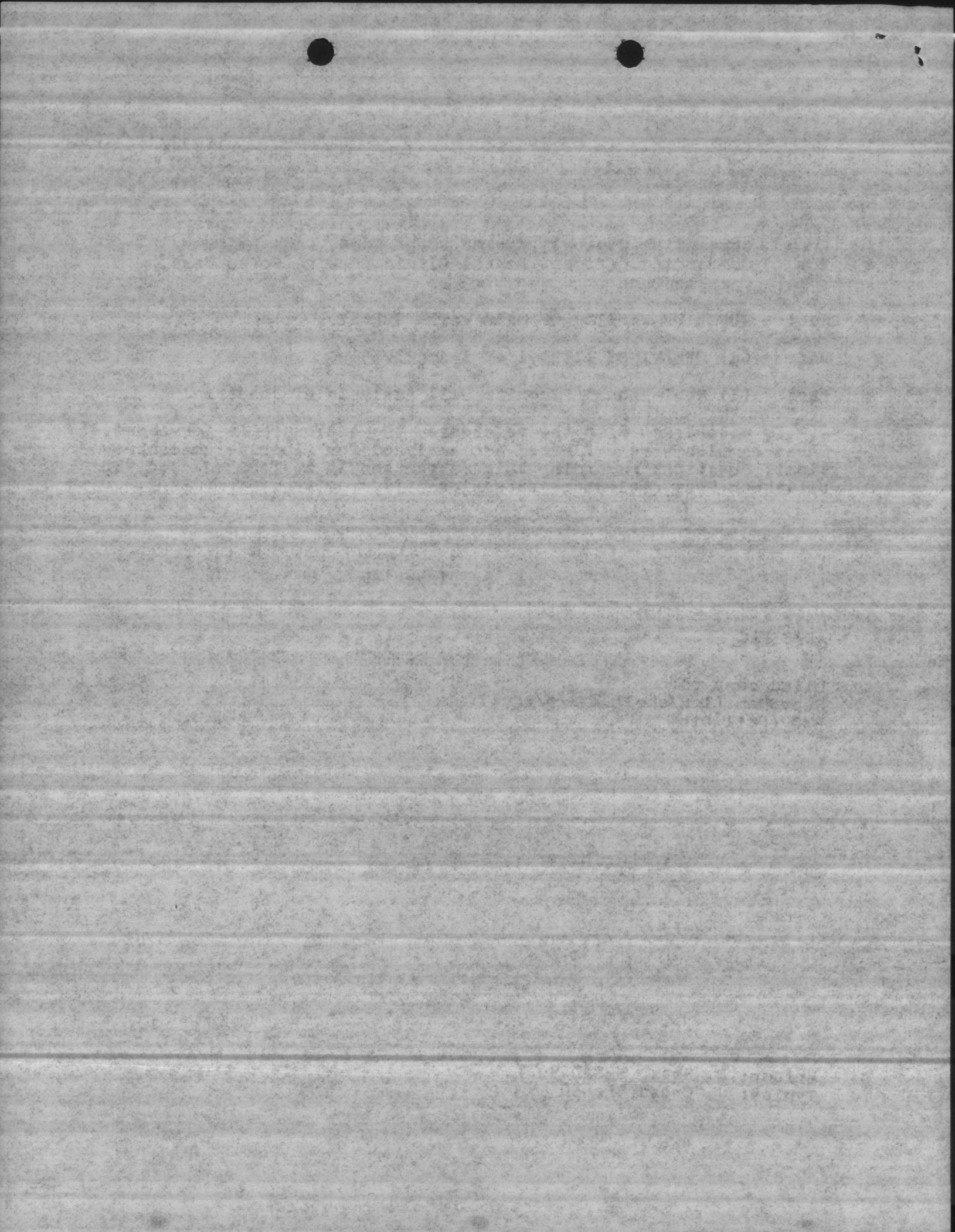
1. In accordance with the reference, the enclosure is forwarded. These samples were collected and analyzed for fluoride concentration. Questions regarding this matter should be forwarded to Ms. Elizabeth Betz, telephone extension 5977.

J. I. WOOTEN
By direction

Copy to:
AC/S PAC

Blind copy to:
SupvChem (1 w/encl; 1 w/o/encl)
BMO (Util Dir)

Writer: E. Betz, NREAD 5977
Typist: J. Cross 5Feb86



DRINKING WATER WELL LIST

Date Collected: 16-24 January 1986 Date Analyzed: 16-24 January 1986

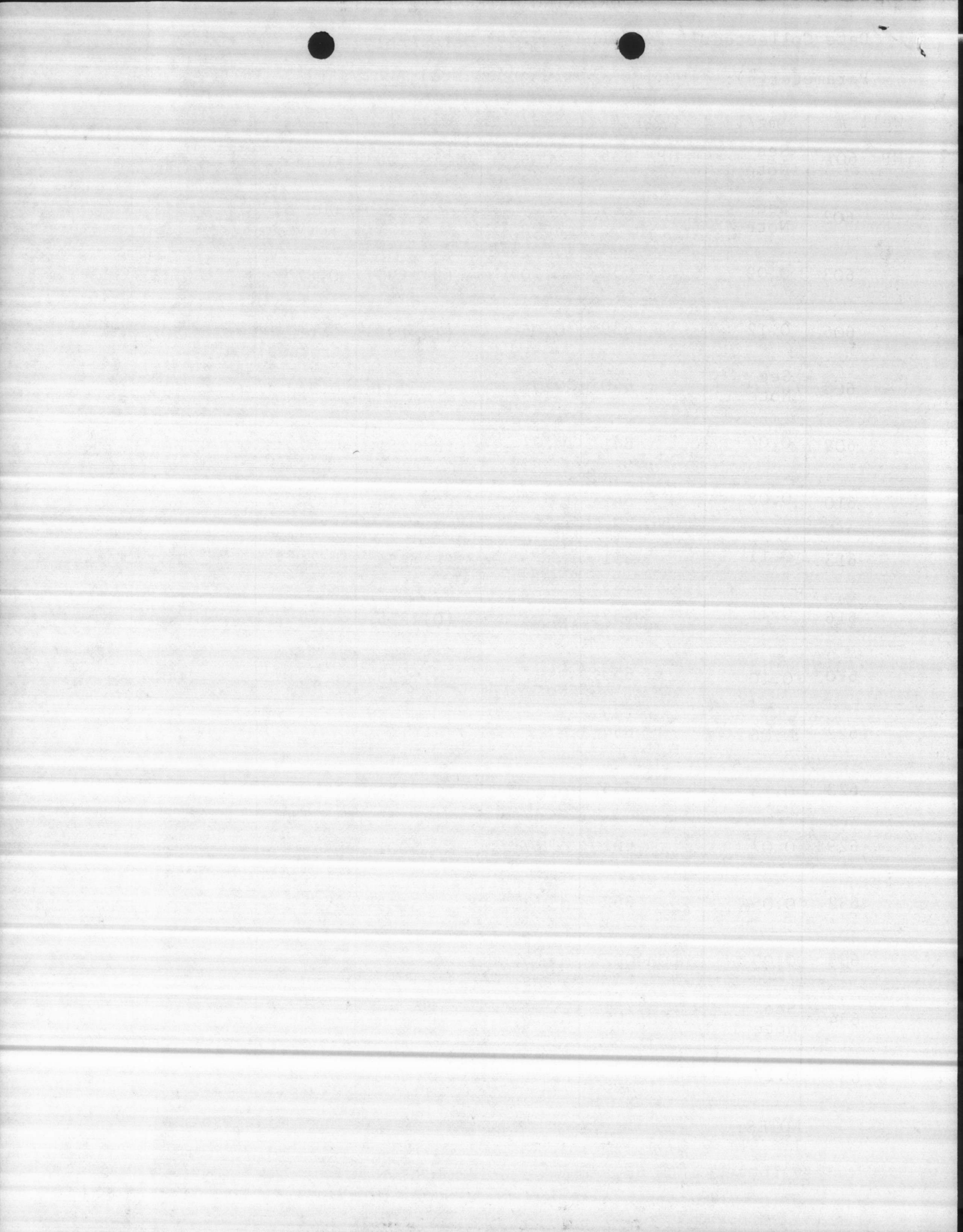
Parameter(s): Fluoride (Semi-annual Well Analysis)

Well #	mg/l	Well #	mg/l	Well #	mg/l	Well #	mg/l
HP 601	See Note 1	HP 636	0.06	MCAS 106	0.58	MCAS CG 100	0.12
602	See Note 1	637	See Note 1	131	Out of Service	201	Out of Service
603	0.09	638	0.10	(S) 190	0.87	325	0.13
606	0.12	639	0.05	(T) 191	0.65	502	Out of Service
608	See Note 1	640	0.08	203	0.58	504	0.13
609	0.04	641	0.07	(R)1251	0.67	600	0.13
610	0.08	642	0.07	(Q)1253	1.50	604	0.11
613	0.11	651	See Note 1	(P)1254	1.21	700	0.16
616	0.21	652	See Note 1	(O)1255	1.26	1000	0.50
620	0.10	653	See Note 1	(N)1256	1.19	1001	0.09
622	0.06	654	0.16	4140	0.22		
623	0.13	655	0.08	4150	See Note 1		
629	0.07	661	0.06	5001	0.23		
632	0.05	662	0.16	5009	0.22		
633	0.09	* LCH4007	0.17				
634	See Note 1	* LCH4009	0.13				
635	0.27						

NOTES:

1. These wells have been secured because of solvent contamination.
- * These wells now pump to Holcomb Blvd Plant.

ENCLOSURE (1)



● DRINKING WATER WELL LIST ●

Date Collected: 16-24 January 1986 Date Analyzed: 16-24 January 1986

Parameter(s): Fluoride (Semi-annual Well Analysis)

Well #	mg/l	Well #	mg/l	Well #	mg/l	Well #	mg/l
HB*643	0.24	<u>TT</u> 25	0.20	<u>OB</u> 164	0.13		
*644	0.20	26	See Note 1	BA190	Out of Service		
*645	0.21	30	Out of Service	<u>RR</u> 45	0.05		
646	0.22	31	Out of Service	47	0.07		
647	0.14	52	0.18	97	0.06		
648	0.13	54	0.17	227	See Note 1		
649	0.13	67	0.16	<u>CHB</u> 43	0.06		
650	0.12	NEW	See Note 1	44	0.05		
		<u>MP</u> 142	0.19	220	0.07		
		161	0.32	221	0.07		
		197	0.15	<u>BB</u> 97	See Note 2		
		267	0.14	A-5	0.04		
		628	0.13				
		629	0.14				
		630	0.15				

NOTES:

1. These wells have been secured because of solvent contamination
 2. BB-97 does not pump to a plant. It is solely for the demo run.
- * These wells now pump to Tarawa Terrace Plant.

